

## **FCC Internal photos**

IQAir AG  
Blumenfeldstrasse 10  
CH-9403 Goldach

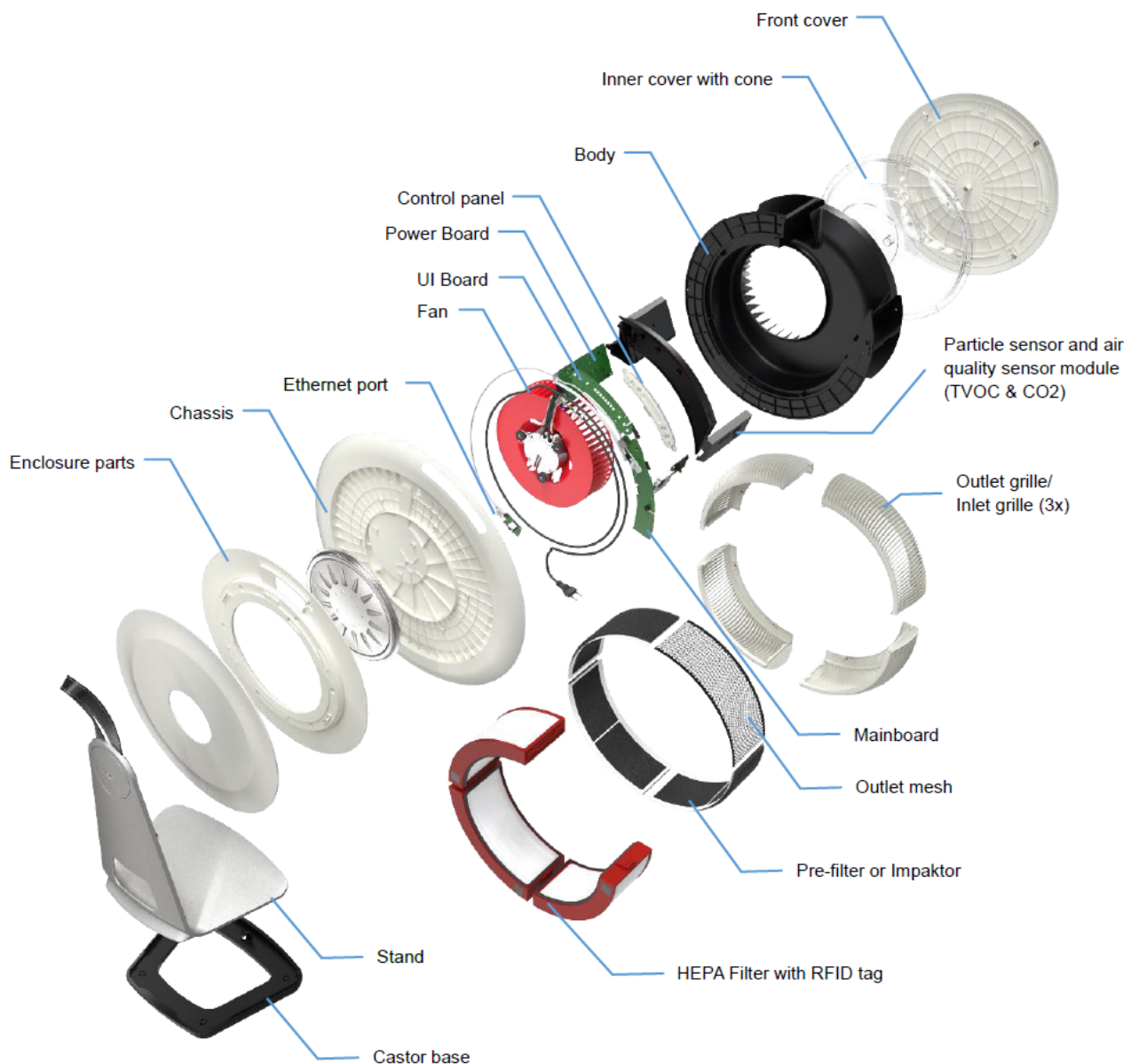
Date: 26 October 2021

FCC ID: 2AMBQ-ATEMX04

To whom it may concern:

Dimensions see "FCC External photos IQAir AG, Atem X a"; diameter of Chassis is approx. 580 mm.

Overview:



Front view, Front cover removed:



Side view onto HEPA Filter, Outlet grille and Inlet grille (3x) removed:



Side view onto Body, HEPA Filter removed:



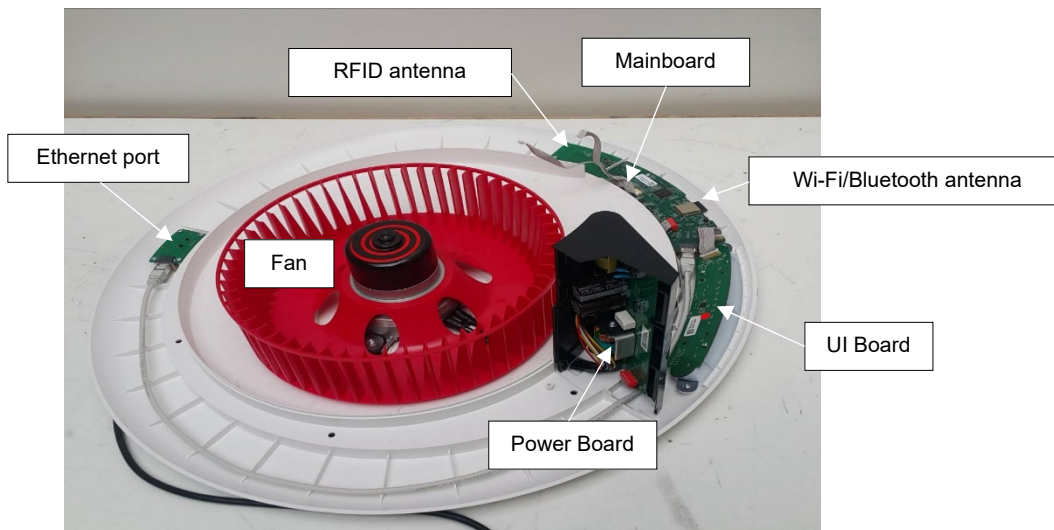
Rear view onto Chassis, Stand removed:



Rear view onto Chassis, Enclosure part removed:

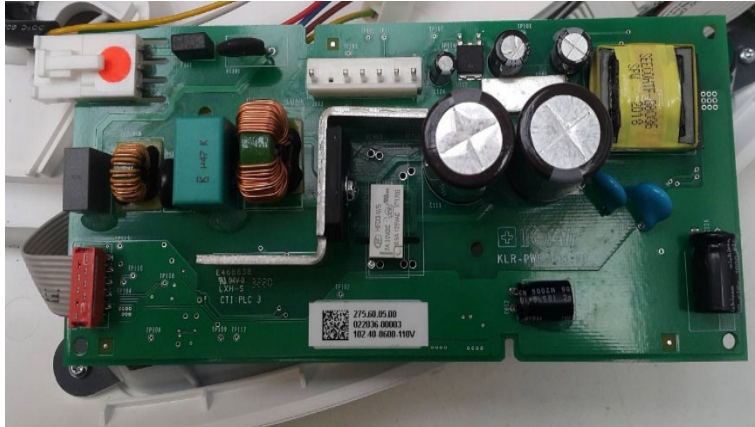


Front view onto Chassis, Body removed:

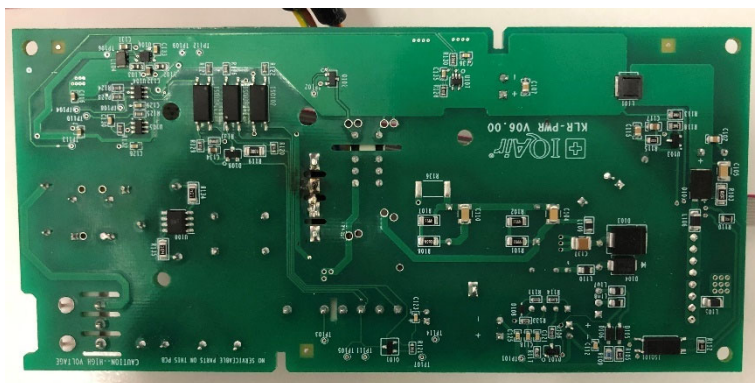




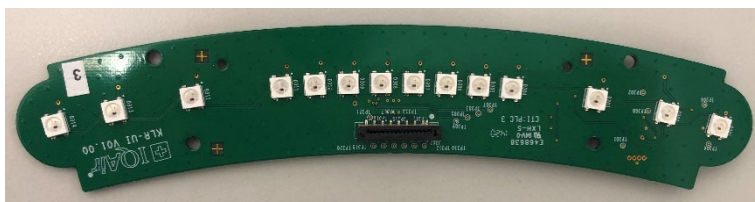
Top view onto Power board:



Bottom view onto Power board:



Top view onto UI Board:



Bottom view onto UI Board:



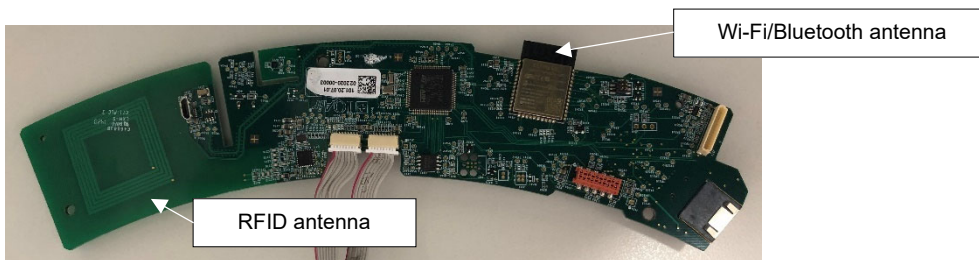
Top view onto Ethernet port:



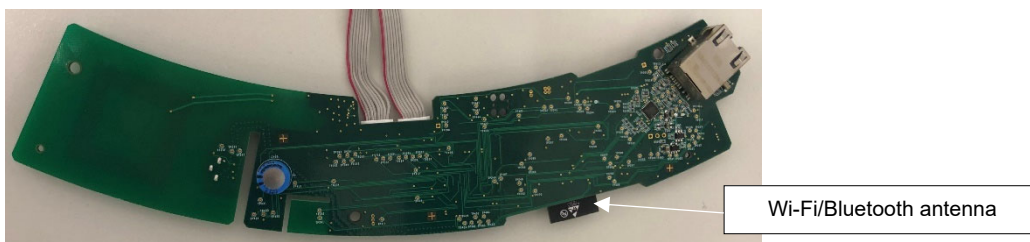
Bottom view onto Ethernet port:



Top view onto Mainboard:



Bottom view onto Mainboard:



If you have any questions, please feel free to contact me.

Yours sincerely,

Signatory



*Printed Name: Rupert Steiner*

*Position: Approval engineer*

  
CH – 9403 Goldach

*[Company Stamp]*