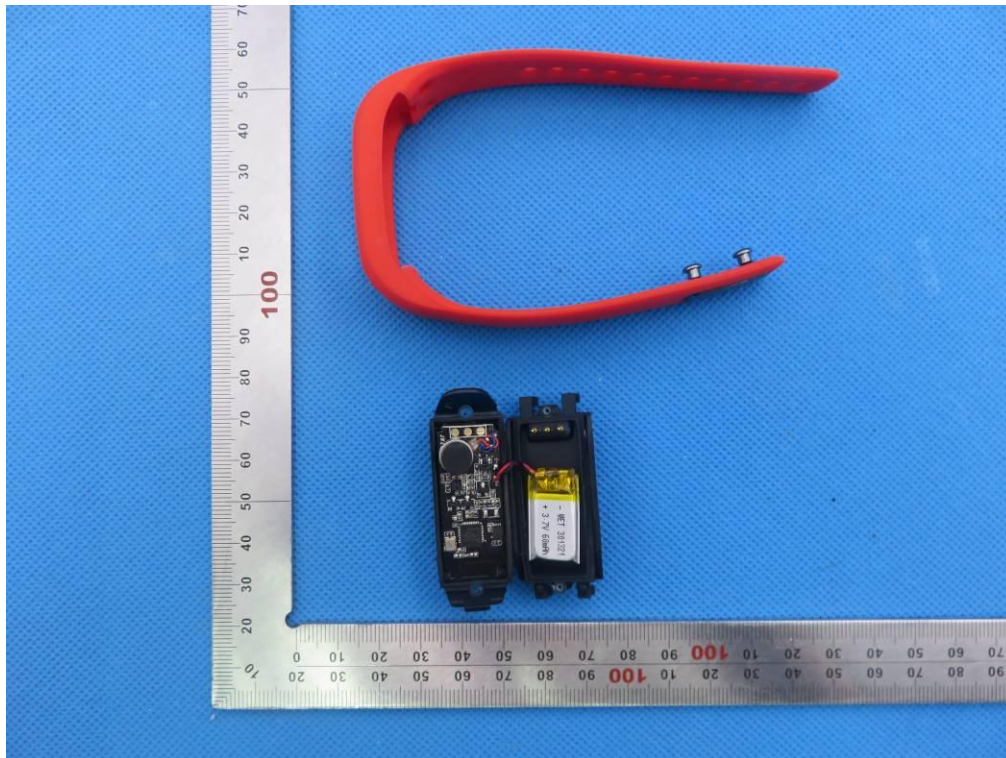
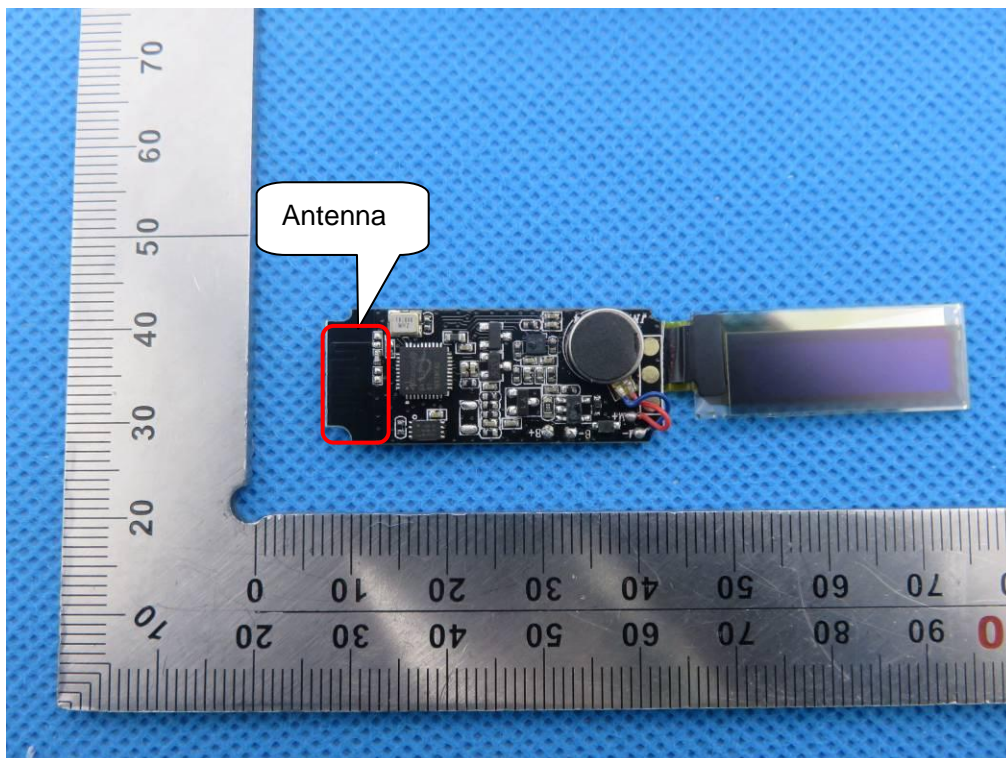


Internal Photos

OPEN VIEW OF EUT



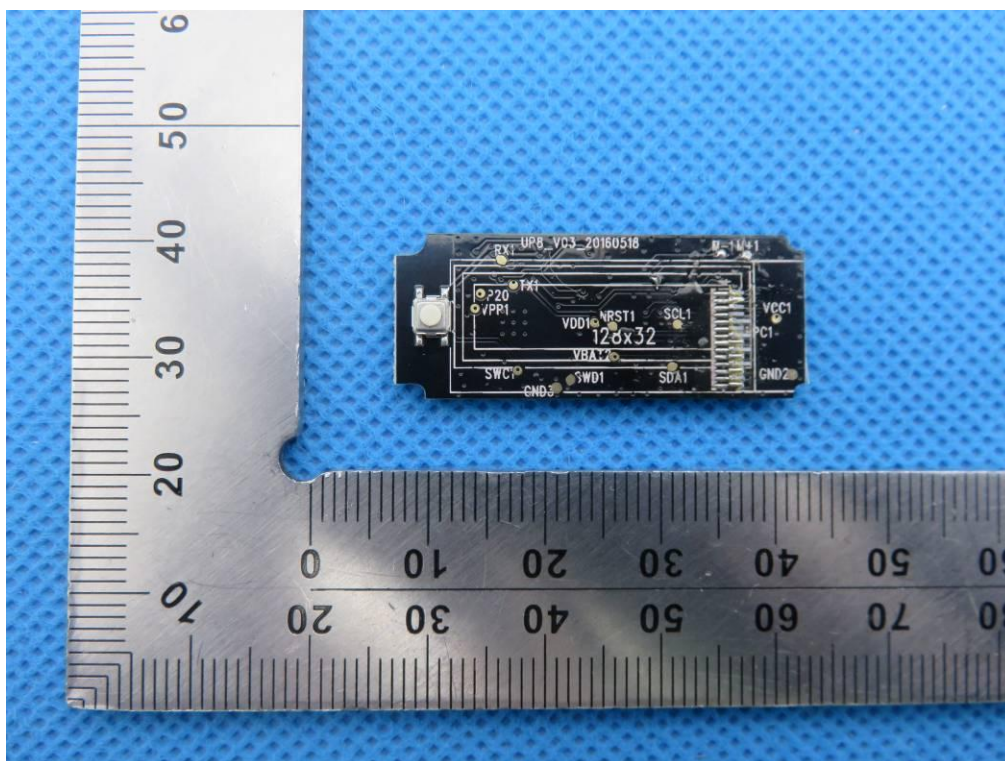
INTERNAL VIEW OF EUT-1



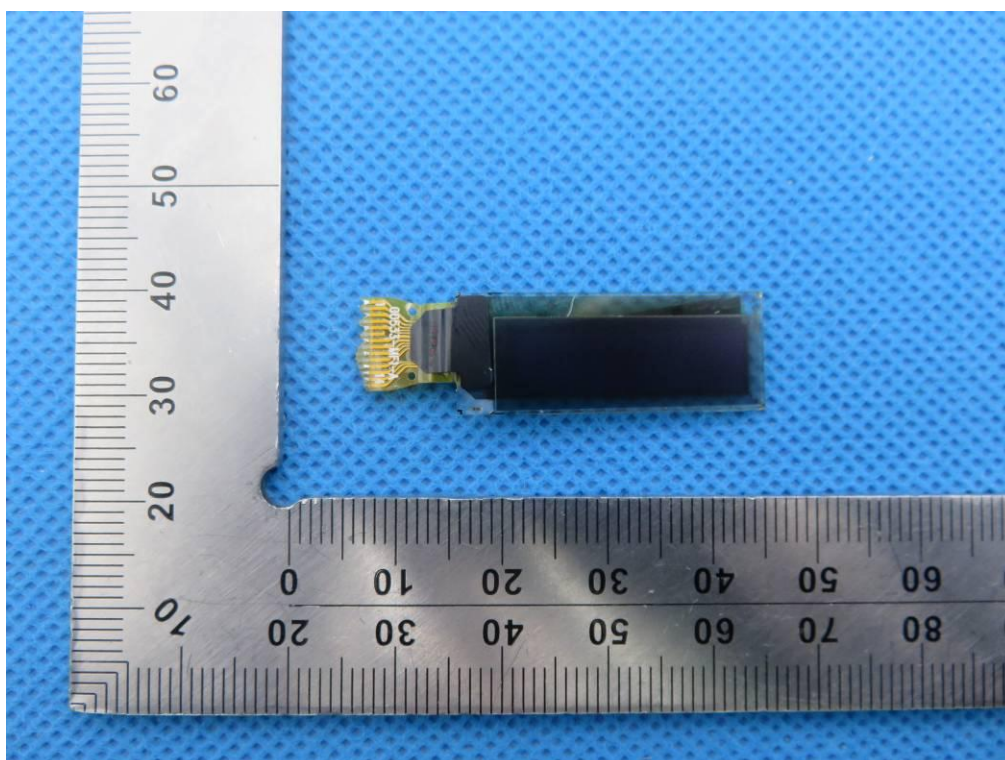
The image shows a small, rectangular electronic component, possibly a sensor or actuator, resting on a blue textured surface. The component has a black top layer with white text and a gold-colored flex cable. A ruler is visible on the left side for scale.

The component features a black top layer with white text. The text includes a part number "126X32", a date "12/08/11", and a serial number "SCL1". There is also a date "12/08/11" and a serial number "SCL1". The component is connected to a gold-colored flex cable. A ruler is visible on the left side for scale.

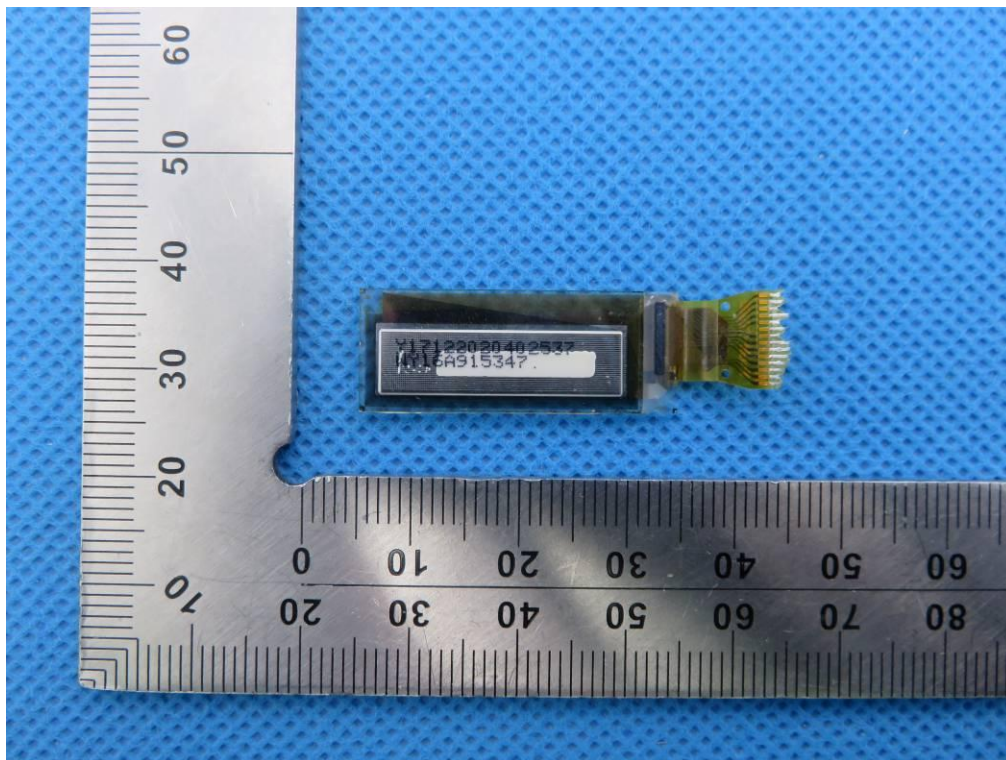
INTERNAL VIEW OF EUT-4



INTERNAL VIEW OF EUT-5



INTERNAL VIEW OF EUT-6



INTERNAL VIEW OF EUT-7

