

## Product specification

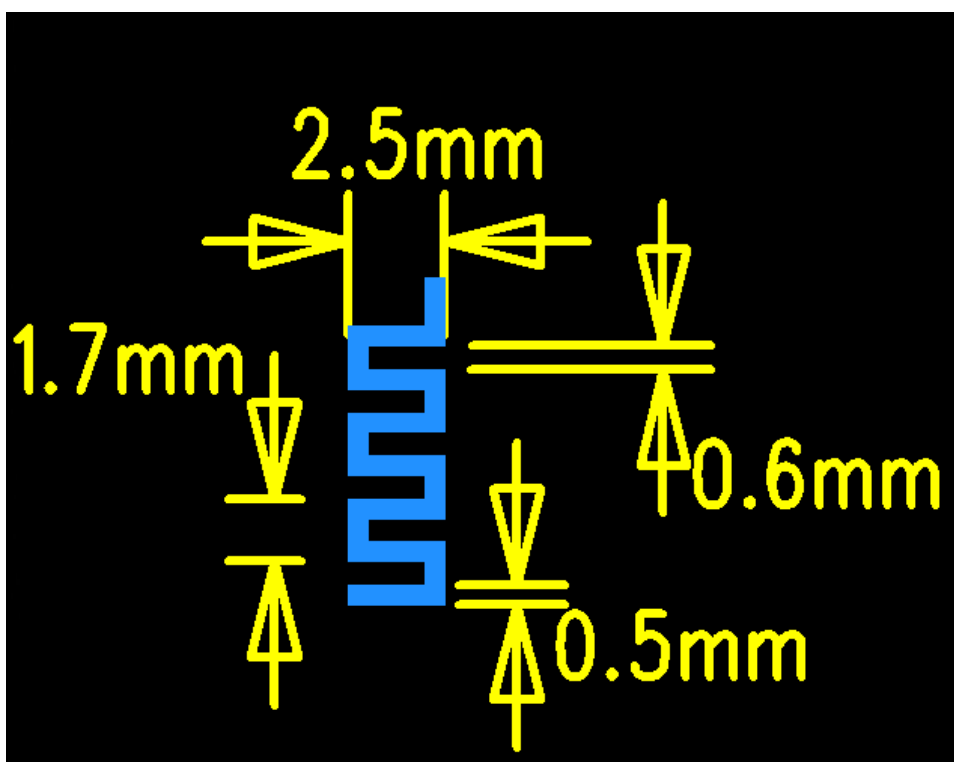
### Quick Reference Date

	Antenna module on the system board	
Frequenc Range	2400 ~ 2500MHz	
Ant. Port Input Pwr. (dBm)	0 (Typ. BT class 2 output power)	
Tot. Rad. Pwr. (dBm)	-1.2 (Input pwr – loss pwr)	
Peak EIRP(dBm)	1.2	
Directivity (dBi)	1 (all direction antenna)	
Efficiency (dB)	6 0.2 %	
Gain (dBi)	1.68 (Avg Gain XY-plane)	
Maximum Power (dBm)	1.7 (XY-plane)	
Minimum Power (dBm)	-4(XY-plane)	
Avg. Power (dBm)	-0.5(XY-plane)	
Input Impendence(ohm)	50	
Polarization Type	Vertical /Horizontal	
V . S .W . R	<1.4	

All the technical data and information contained herein are subject to change without prior notice

### Antenna Layout & module on the system board

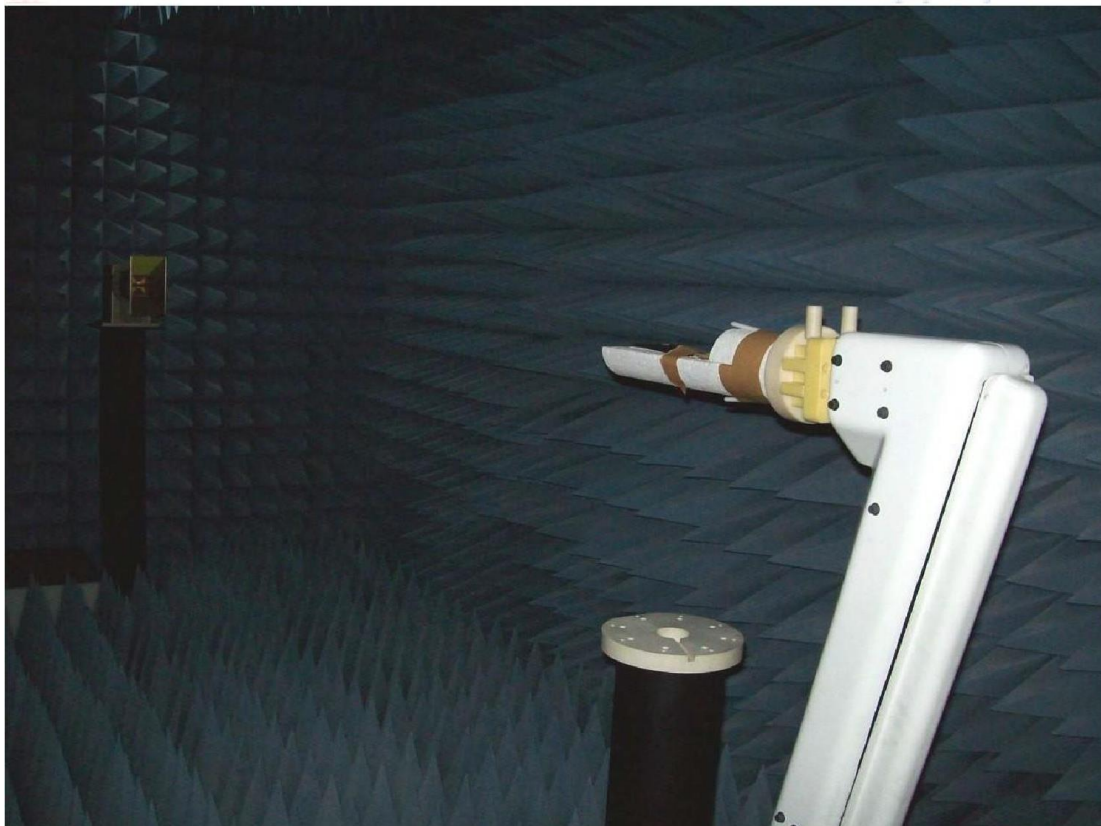
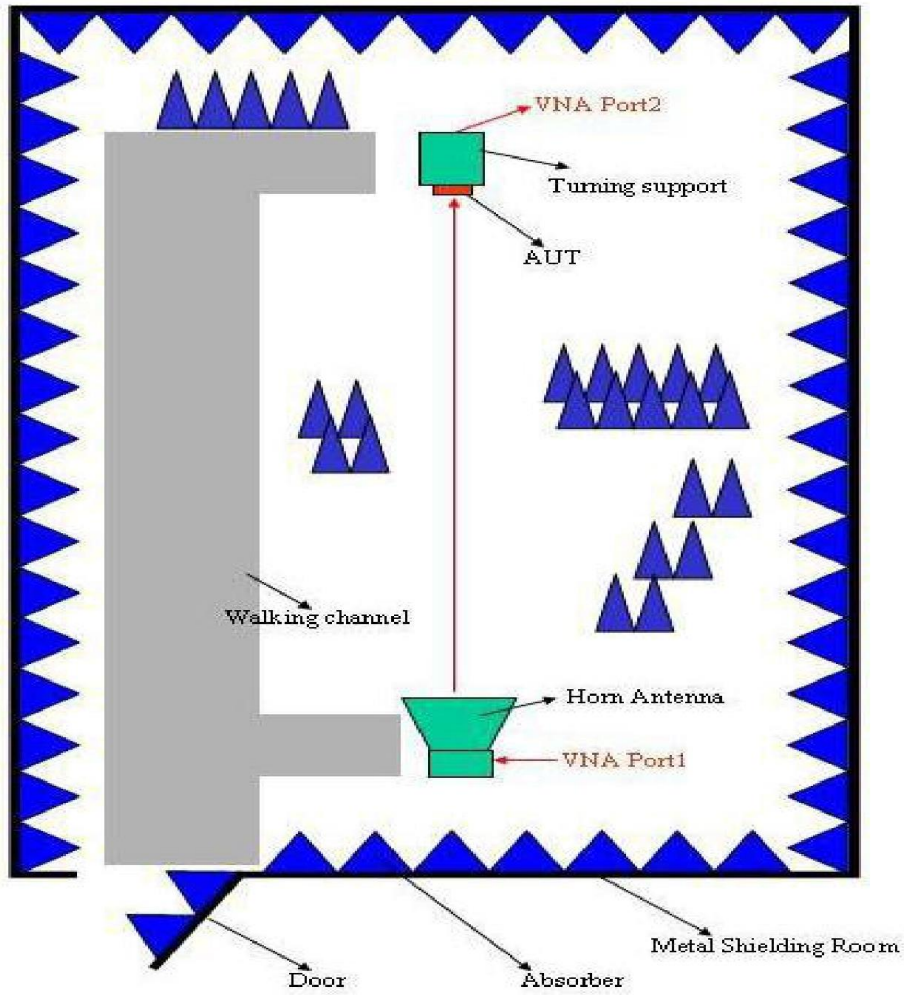
Antenna type: PCB Antenna



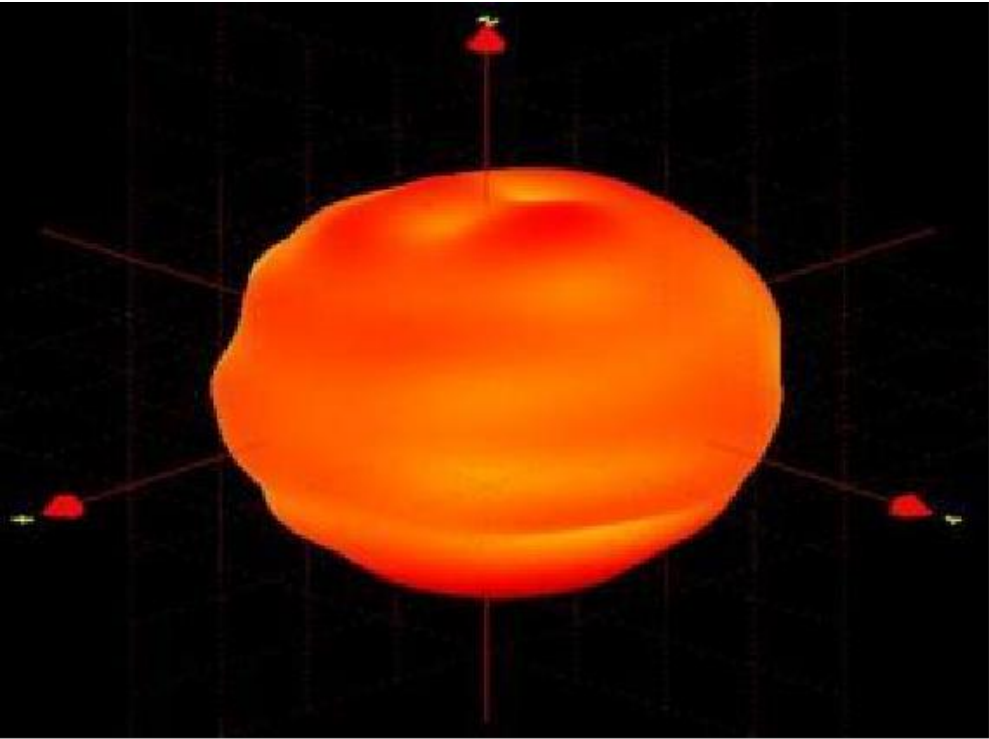
# Return Lose



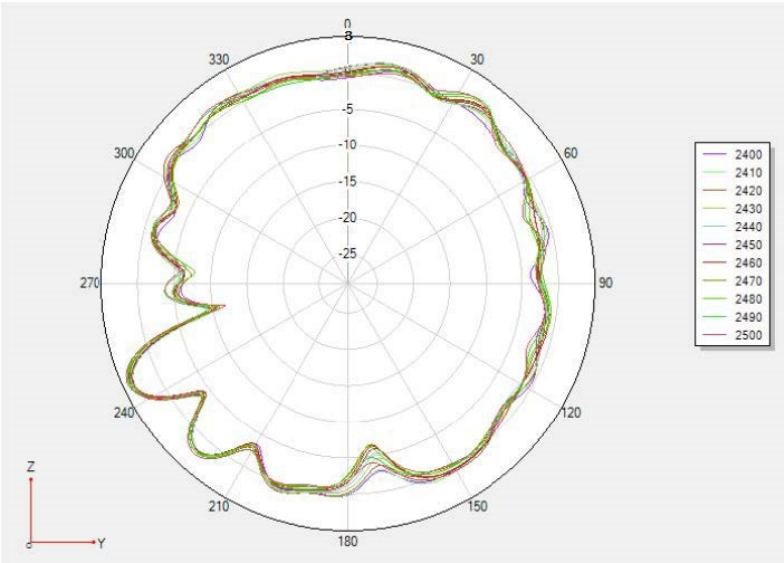
# The Environment of Antenna Radiation Pattern



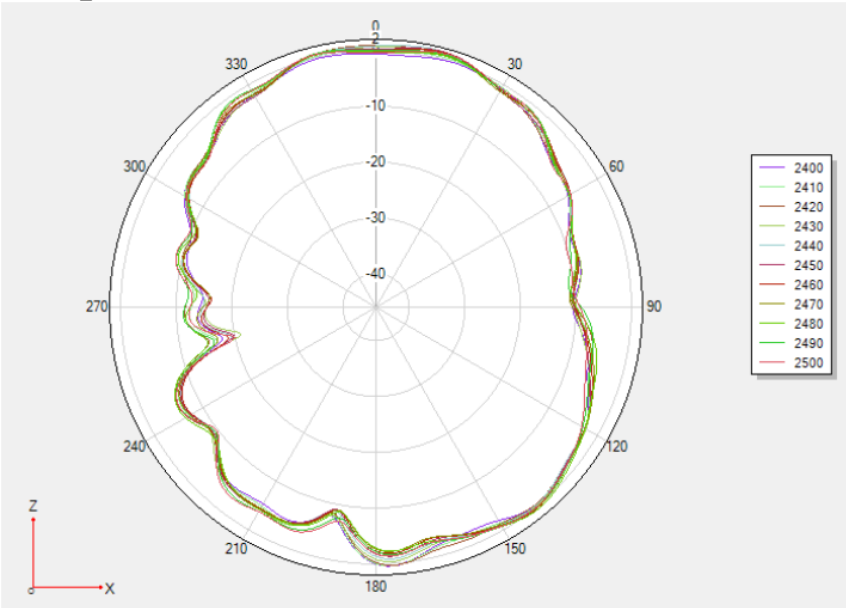
# 3D radiation pattern diagram



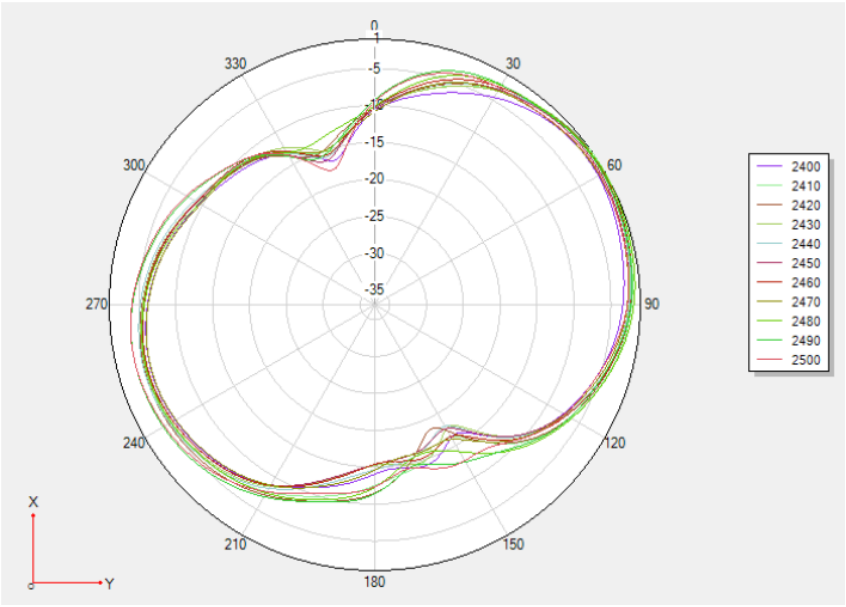
# YZ-plane



# XZ-plane



# XY-plane



<b>Frequency (MHz)</b>	<b>2400</b>	<b>2450</b>	<b>2500</b>
<b>Avg. Gain (dBi)</b>	<b>- 1 .91</b>	<b>- 1.48</b>	<b>- 1 .31</b>
<b>Peck Gain (dBi)</b>	<b>1 .05</b>	<b>1.34</b>	<b>1.68</b>
<b>Efficiency (%)</b>	<b>72. 1</b>	<b>74.5</b>	<b>78.2</b>

### **ANT manufactuer**

Jiangmen yongxu circuit board co., ltd.

Factory address: Jiangmen Taishan City Chongling Town Hongling Industrial Zone  
Hongling Road on the 7th plant

Office: Baoan District, Shenzhen City Tong Wei Community Fenglang Avenue Atos  
Source Chi Chuang Valley Building 5 103

Tel:0755-23309767 Email:JMSYXPCB@163.COM

Market Department QQ:3495845273

Website: WWW.JMYXPCB.COM