



User's Manual

CSW808K

802.11b/g/n, 1T1R, USB SMT Module

Version : 0.1
Date:Jan, 2017

Version:

Date	Release note
2017/02/10 v0.1	Jack Lin Initial version

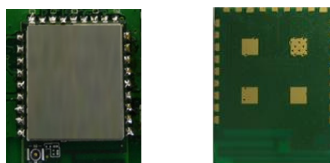
1 Product description

BOINTEC CSW808K is a low cost, low power consumption IOT module. CSW808K integrated Wi-Fi chip, Compliant with IEEE 802.11b/g/n standard, provide GPIO port for intelligence control & UART port for device communication, CSW808K has built-in PCB Antenna & 4Mbits Flash memory, Single 3.3V power supply management unit, CSW808K is the best solution for plug-in equipment.

1.1 Feature

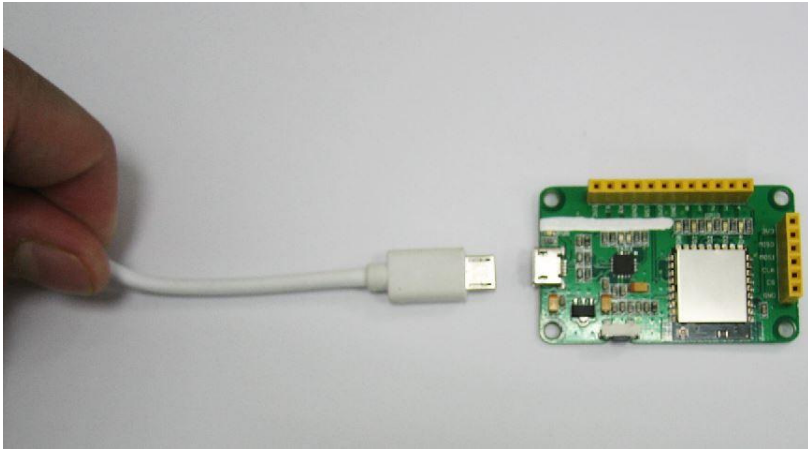
- Compliant with IEEE 802.11b/g/n standard/use 2.4GHz band
- 32-bit RISC microprocessor MCU
- Support Client & AP mode, able to switch
- Support WEP/WPA2 encryption mode
- RF ON/OFF Control
- Sleep Mode Management
- dimension: 20 mm x 15 mm x 2.45 mm

1.2 Exterior



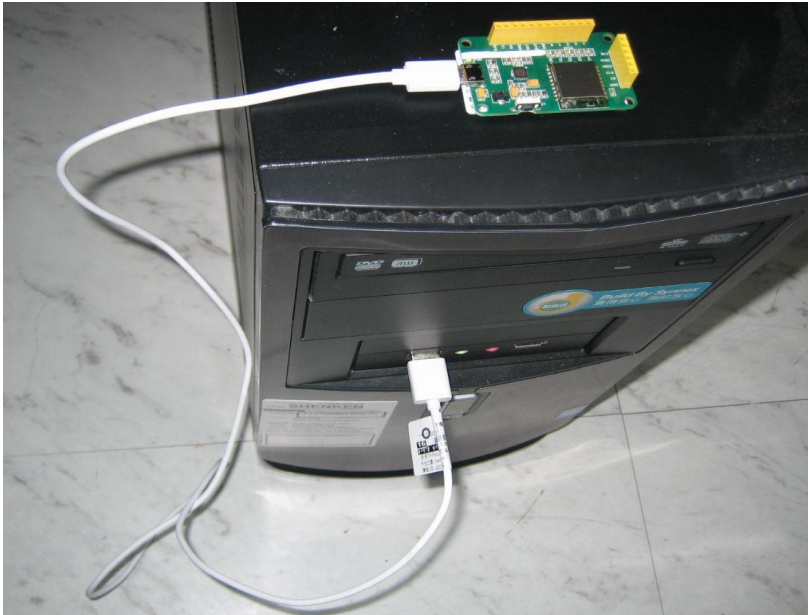
2.1 Set up procedure

1. Connect USB Micro Type to CEV808 test board (Img 2.)



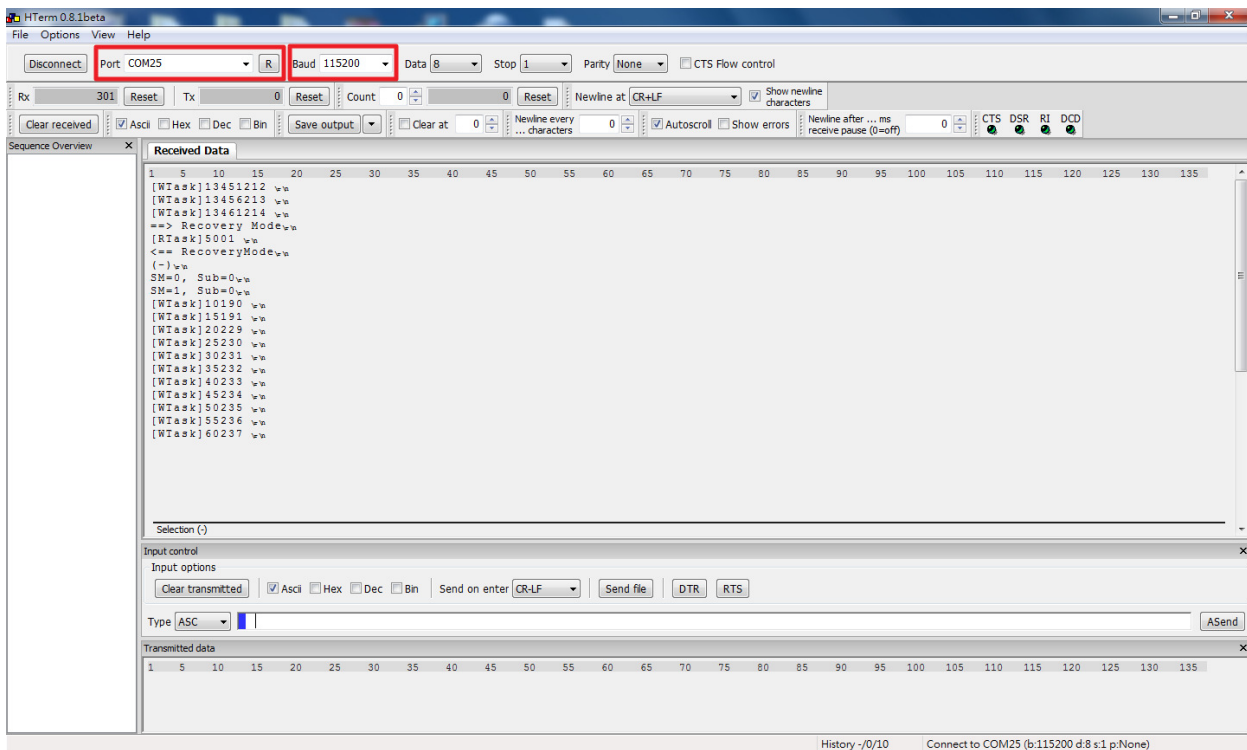
(Img 2.)

2. Connect USB A Type to the USB port on PC (Img 3.)



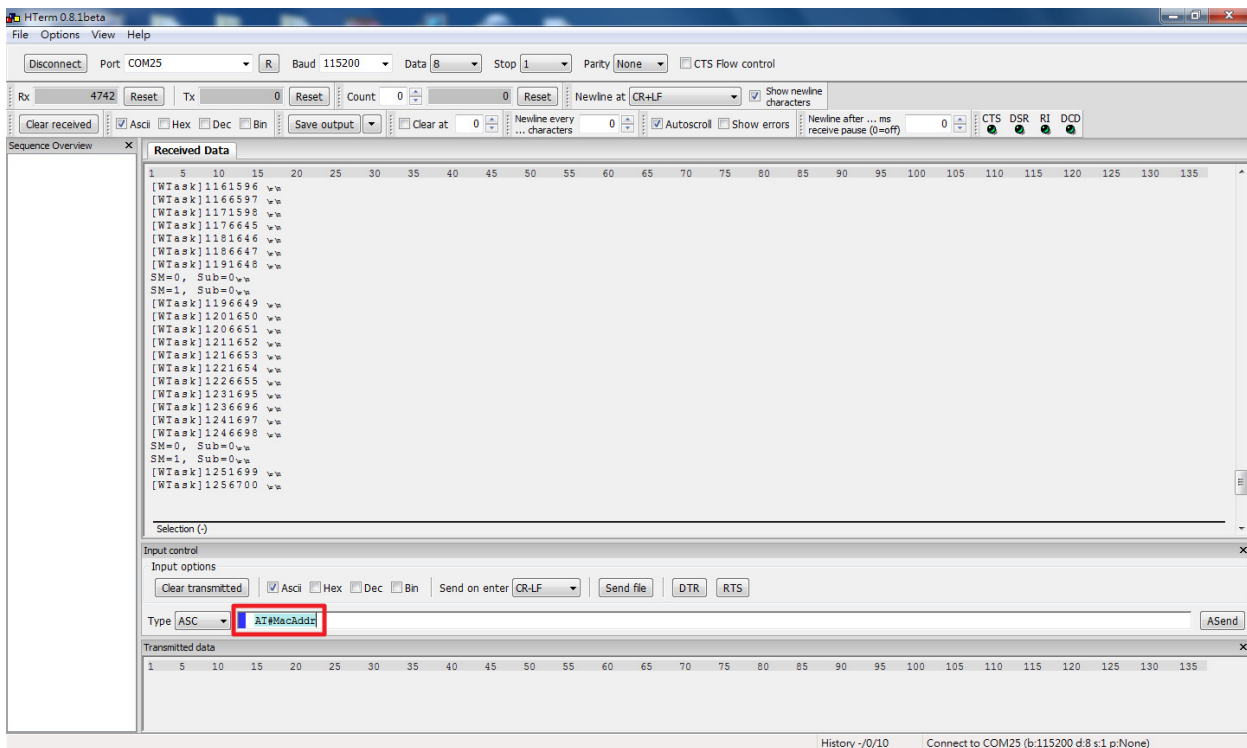
(Img 3.)

3. Choose the connecting Port & Baud rate (115200), press connect (Img 4.)



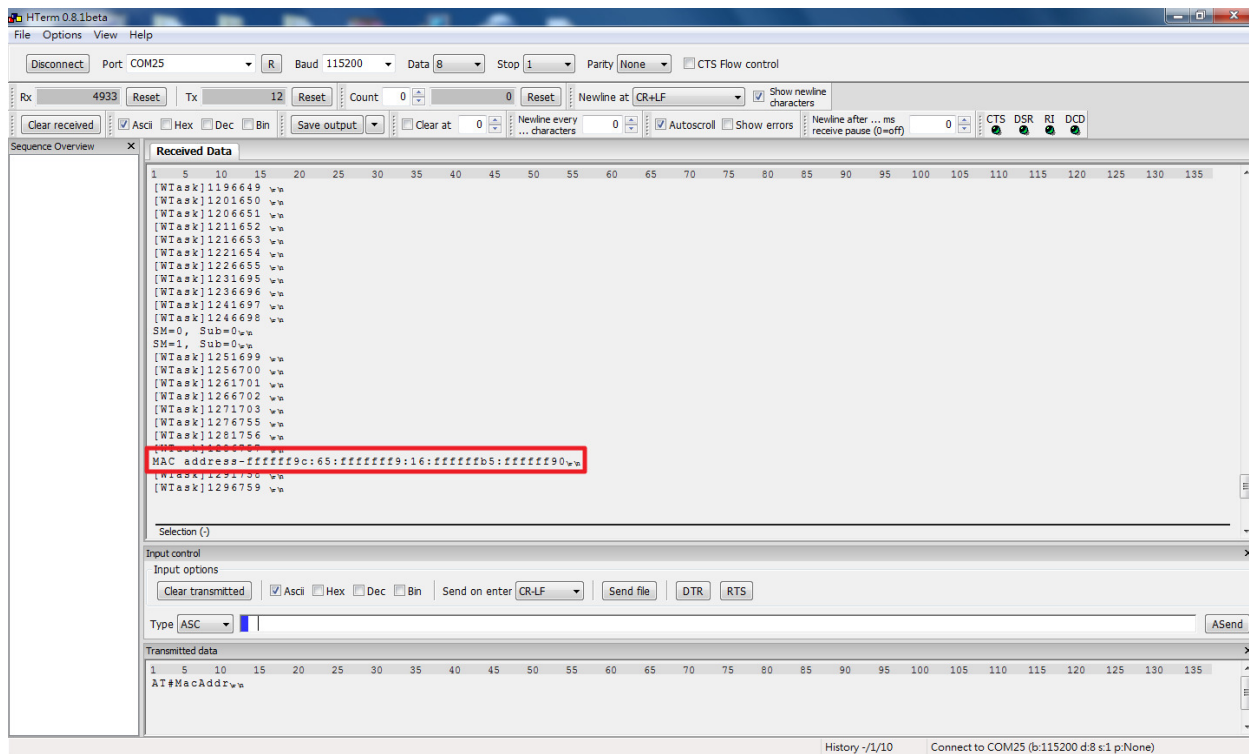
(Img 4.)

4. Enter AT#MacAddr (Img 5.)



(Img 5.)

5.Display the MAC of the device, (Img 6.)



(Img 6.)

© TAIJET BOINTEC CORPORATION LIMITED 2017

This information is furnished for guidance, and with no guarantee as to its accuracy or completeness; its publication conveys no license under any patent or other right, nor does the publisher assume liability, for any consequence of its use; specifications and availability of goods mentioned in it are subject to change without notice; it is not to be reproduced, in whole or in part, without the written consent of the publisher. Any copying, use or disclosure of it without the written permission of BOINTEC Taiwan Corporation Limited is strictly prohibited

FCC Warning

This device complies with Part 15 of the FCC Rules. Operation is subject to the following two conditions:

- (1) this device may not cause harmful interference, and
- (2) this device must accept any interference received, including interference that may cause undesired operation.

FCC Caution

Any changes or modifications to this unit not expressly approved by the party responsible for compliance could void the user's authority to operate the equipment. The antenna(s) used for this transmitter must not be co-located or operating in conjunction with any other antenna or transmitter.

FCC ID label on the final system must be labeled with "Contains FCC ID: 2AMAFCSW808KAS"

FCC Radiation Exposure Statement:

This equipment must be installed and operated in accordance with provided instructions and the antenna(s) used for this transmitter must be installed to provide a separation distance of at least 20 cm from all persons and must not be co-located or operating in conjunction with any other antenna or transmitter.