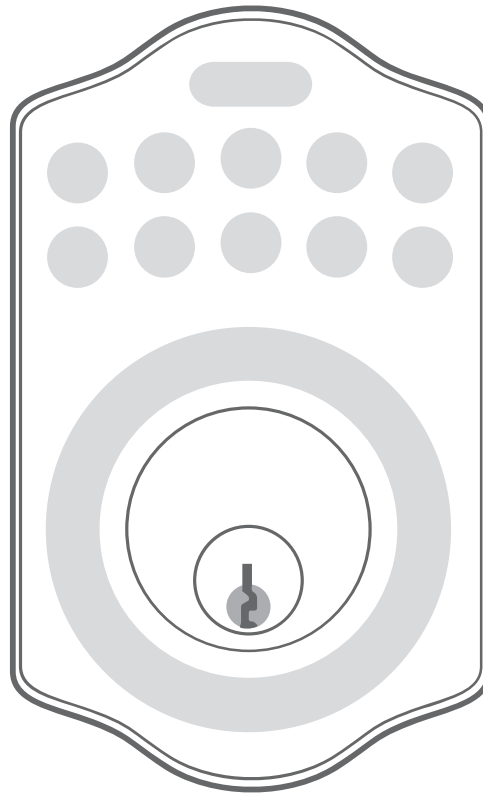


# IG200

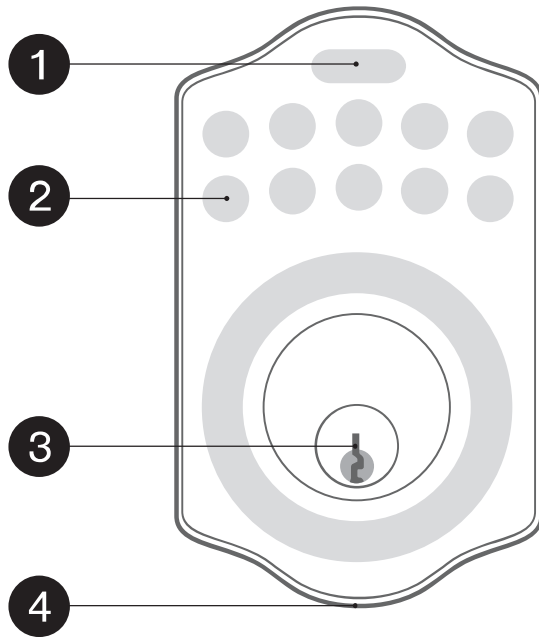
USER MANUAL



DO NOT USE electric drill or electric screwdriver for installation.

# DOOR LOCK PARTS

## EXTERIOR



### 1. ENTER Button

Enter is for entering codes, clearing error and setting function. It's also lock button.

### 2. Number Button

Input User Code and Programming Code. When you push it, LED will be on for 5 seconds.

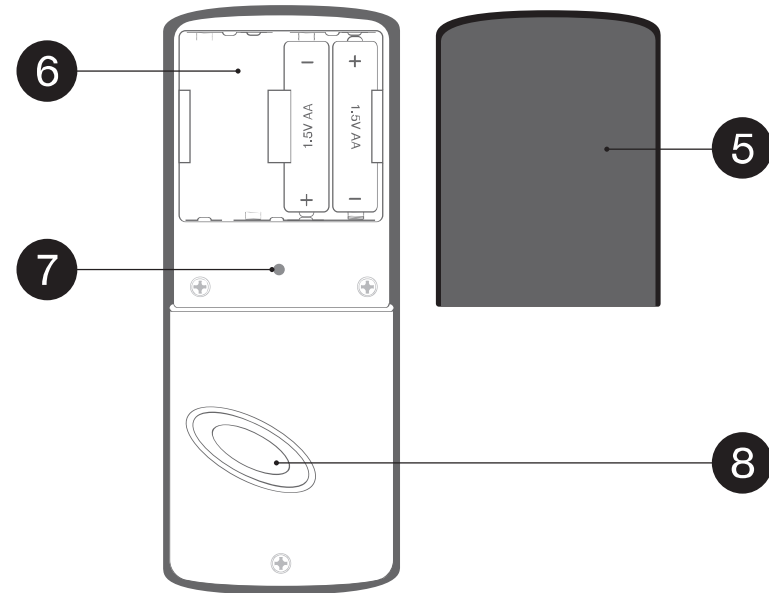
### 3. Cylinder

Retract/Extend the deadbolt by key from exterior.

### 4. Washer

Prevent water permeating into lockset.

## INTERIOR



### 5. Battery Cover

Slide the lid to change the batteries or restore preset setting.

### 6. Battery Holder

Four AA (1.5V) batteries.

### 7. R Button (Restore)

Restore preset setting.

### 8. Turn-Piece

Retract/Extend the deadbolt from interior.

## Low Battery

---

- Ⓐ Long beep 10 times when the door lock battery is low.
- Ⓑ In low battery status, you can open 20 times more with beeping sound.
- Ⓒ 20 times opening after low battery warning, door won't be locked. Once you change new battery, you can use as normal. (In this situation you can open with key.)

## User Code (UC)

---

- Ⓐ Preset UC is 1234. Please delete and create your personal code for the security.
- Ⓑ Up to 6 sets of UC can be stored.
- Ⓒ UC and PC can't be same.
- Ⓓ UC is 4-10 digits in length.
- Ⓔ UC can be deleted or changed anytime if needed. If you restore the door lock, UC will be 1234.

## Delete Individual User Code

---

- Ⓐ UC can be deleted individually. You can reset the same number as UC even though it's deleted before.
- Ⓑ To delete UC, use door lock function code or APP setting.

## Delete All User Codes at Once

---

- Ⓐ All UC can be deleted at once. You can reset the same number as UC even though it's deleted before.
- Ⓑ Auto-lock and Keypad lock function will be invalid after deleting all UC and the lock can be operated by key. All the electrical functions will be restored when recreate new UC.
- Ⓒ To delete UC, use door lock function code or APP setting.

## Programming Code(PC)

---

- Ⓐ Preset PC is 0000. Please delete and create your personal code for the security.
- Ⓑ Only one set of PC for function setting.
- Ⓒ PC is only for function setting so you can't unlock the door by pressing PC.
- Ⓓ PC is 4-10 digits in length.
- Ⓔ PC can be changed anytime if needed.

## Create a One Time Code

---

- Ⓐ One Time Code will be no longer valid once it's used.
- Ⓑ You can reset same number as One Time Code after use.
- Ⓒ You need to enter PC to create a One Time Code.

## Temporarily Disable All User Codes

---

- Ⓐ Auto-lock and Keypad lock function will be invalid after deleting all UC and the lock can be operated by key.
- Ⓑ Repeat the programming steps again to restore the UC.

## Restore Preset Factory Code

---

- Ⓐ You can restore preset factory code by pressing R button from the interior for 5 seconds when you want to restore the door lock.
- Ⓑ After restore, PC would be 0000; UC would be 1234 again.

## Unlock the door

---

- Ⓐ The door will be unlocked with key, pressing UC on keypad, using smartphone APP from outside or by interior turn-piece.
- Ⓑ To unlock the door on the keypad, enter the UC and then press Enter button. If you installed APP to door lock, you can just push the Enter button to open the door.

## Lock the door

---

- Ⓐ The door will be locked by key or pressing Enter button from outside or by interior turn-piece.

## Incomplete Door Closing/Opening

---

- Ⓐ Once the latch bolt is not extended/retracted completely and causing a not functional motor operation when it's locked by keypad, you'll see LED flash red 3times and hear 3 beeps. You need to enter UC to unlock the door for remaining the bolt retracted, and press Enter button to lock the door again.
- Ⓑ If the latch bolt gets stuck or can't extend/retract completely all the time, please check if the strike aligns with the latch bolt perfectly and adjust the strike to proper position. After long use of the door hinge, the latch bolt might get stuck easily because the door is deformed or lopsided.

## Auto-lock function On/Off

---

- Ⓐ The door will be automatically locked itself within 10-99 seconds when this function is programmed.
- Ⓑ This function is off at the beginning. It can be set if needed.
- Ⓒ Preset Auto-lock time is 30 seconds; you can adjust the period as you want.
- Ⓓ Please repeat the same programming steps to turn off Auto-lock function when needed.

## Button Sound On/Off

---

- Ⓐ You will hear beep sounds when pressing keypad, programming or operating errors. Only keypad sound can be off.
- Ⓑ LED illumination is still functioning when it's in mute. Error sound will be alarming.
- Ⓒ Motor operating sound cannot be muted.

## Code Protection Function

---

- Ⓐ The operation will stop with warning sound if entering wrong UC over 5 times. The system will re-operate again after 45 seconds.

## Illumination

---

- Ⓐ The LED keypad will light up when pressing any button for ease of operating in the dark.

## IG200 Programming Guide

P : Programming Code / E : ENTER Button

Program Menu	Instruction
Initial Setting (Left/Right Door)	<b>P ▶ E ▶ 0 ▶ E</b>
New UC (Preset: 1234)	<b>P ▶ E ▶ 1 ▶ E ▶ New UC ▶ E</b>
Delete UC	<b>P ▶ E ▶ 2 ▶ E ▶ UC(want to delete) ▶ E</b>
Delete All UC	<b>P ▶ E ▶ 3 ▶ E</b>
Change PC (Preset: 0000)	<b>P ▶ E ▶ 4 ▶ E ▶ New PC ▶ E</b>
Auto-lock On/Off (Preset: Off)	<b>P ▶ E ▶ 5 ▶ E</b>
Auto-lock time (Preset: 30sec)	<b>P ▶ E ▶ 6 ▶ E ▶ Time (10~99 seconds) ▶ E</b>
Button Sound On/Off (Preset: On)	<b>P ▶ E ▶ 7 ▶ E</b>
Temporarily Disable All UC	<b>P ▶ E ▶ 8 ▶ E</b>
Create One Time Code	<b>P ▶ E ▶ 9 ▶ E ▶ One Time Code ▶ E</b>
Door lock Bluetooth On/Off (Preset : On)	<b>P ▶ E ▶ 1 1 1 ▶ E</b>
Mobile Key install in Door lock	<b>P ▶ E ▶ 0 0 0 ▶ E ▶ Setting Mode</b>
Mobile Key delete from Door lock	<b>P ▶ E ▶ 3 3 3 ▶ E ▶ APP Mobile Key number ▶ E</b>
Door lock Setting Mode using APP	<b>Press R Button 2 times</b>
Prevent Unauthorized Restore	<b>P ▶ E ▶ 9 9 9 ▶ E</b>
Door lock Restore 1 (Preset)	<b>Press R Button for 5 seconds</b>
Door lock Restore 2 (With PC)	<b>P ▶ E ▶ Press R Button for 5 seconds</b>

## Mobile Key Guide from APP

### Family Key

- Mobile Key that unlock the door for family member.
- **How to Get** : You can install it by yourself or receive from family member someone who already has Family Key.
- If you have Family Key, you can send Family Key, Guest Key and One Time code to other people.
- **Family Key send** : You need to make setting mode using PC [0000].
- **Guest Key send** : No need setting mode.
- **One Time Code send** : No need setting mode.
- Family Key user can check Door lock open history and change door lock setting.
- **Up to 8 Family Key can be issued.**

### Guest Key

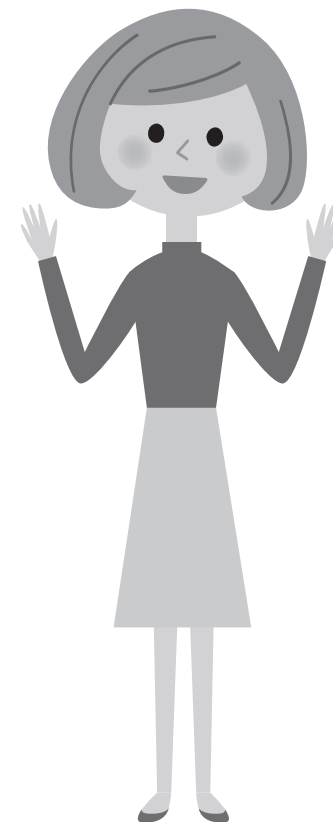
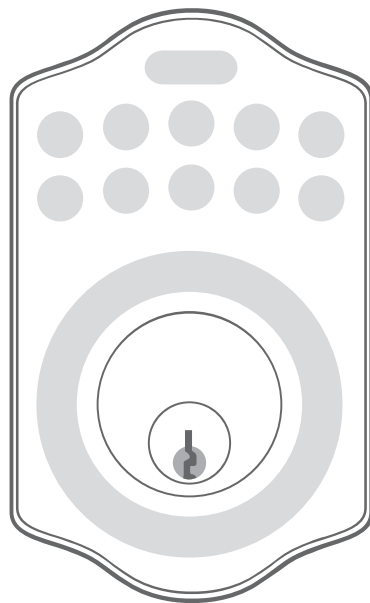
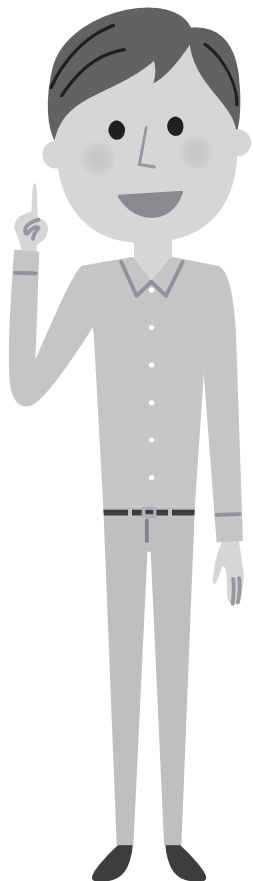
- Mobile Key that unlock the door for guest. (Scheduled Key/ Maximum 30 days)
- Guest Key can be issued from Family Key user.
- **Up to 16 Guest Key can be used at the same time/ No schedule extend**

### One Time Code

- Disposable User Code (8 digits) will be created from APP.
- One Time Code can be issued from Family Key user.
- **Unlimited One Time Code can be issued. BUT every time 10 One Time Code are issued, you have to enter setting mode and initial it.**
- Note : If you renew One Time Code, you can't use previous one. So please use in order.

If you restore the door lock, all previous Mobile Key are invalid.  
Please install Mobile Key again.

# USER EASY GUIDE

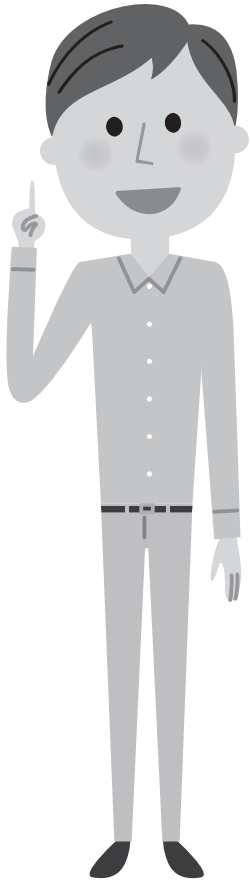


Q

What is UC and PC ?

A

User Code and Programming Code.

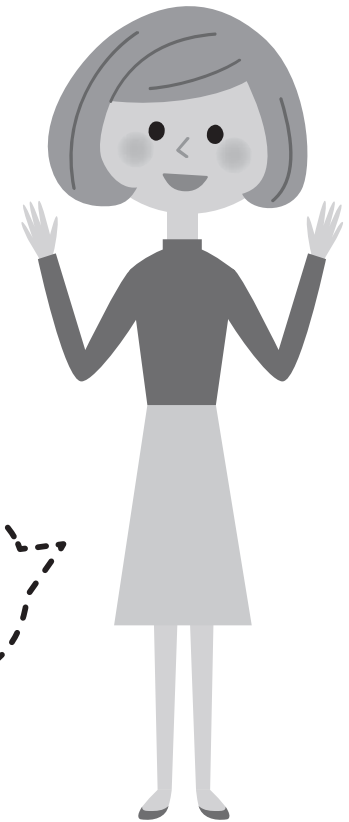


**UC**

**UC (USER CODE )**

It's pass code when you unlock the door.

Preset UC is '1234'.



**PC (PROGRAMING CODE )**

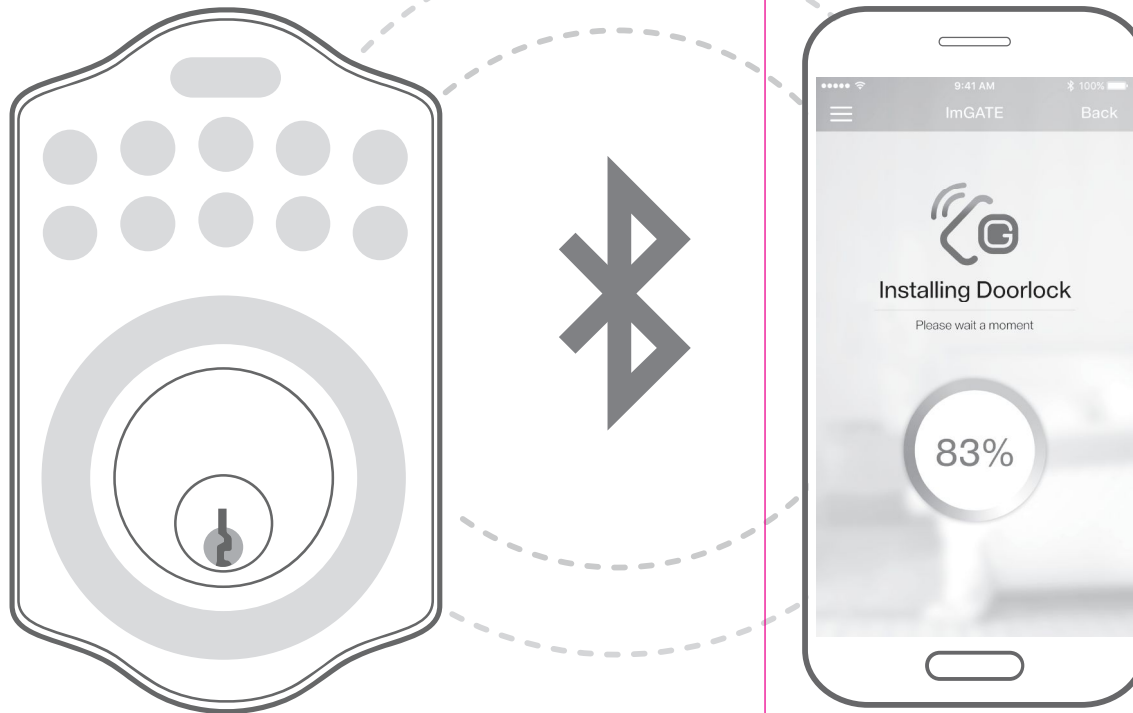
It's the code when set the door lock function.

**PC**

Preset PC is '0000'.

Tip

Smart phone Bluetooth should be ON when you open the door lock using Smartphone.



If you have trouble with open the door using smartphone, Please turn off and on Bluetooth from smartphone.





Q

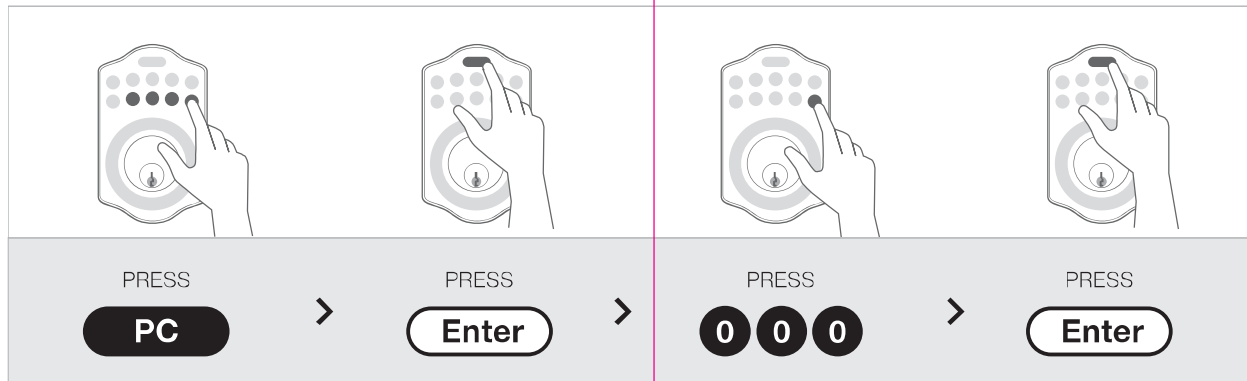
How can I connect my smartphone to door lock?

A

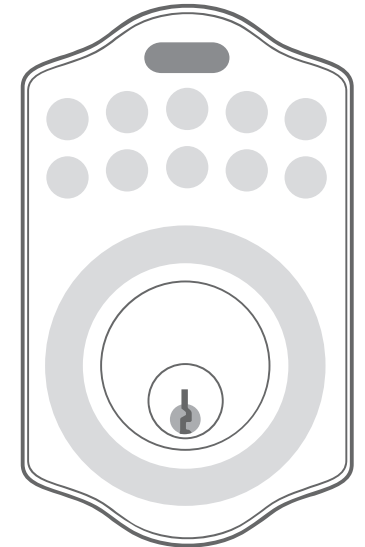
You would make door lock setting mode to connect smartphone. Please follow as below.



## How to connect door lock and smartphone



ENTER button  
'Flash ORANGE'



When door lock is ready to connect to smartphone, ENTER button will flash ORANGE for 15 seconds before connected.

( Once door lock turned to setting mode, door lock let connection mode for 15 seconds. if smartphone is not connected within 15 seconds setting mode will be invalid.)



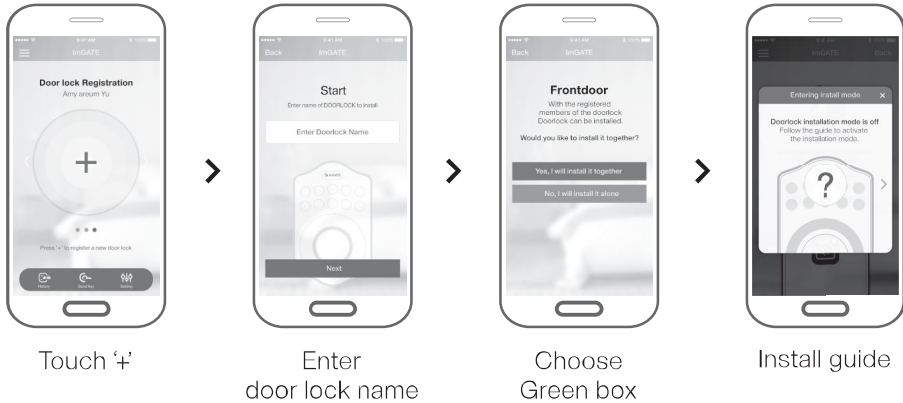
Q

How can I open the door using Smartphone?

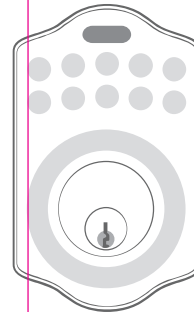
A

It's easy ! Please follow as below.

**STEP.01** Prepare door lock installation



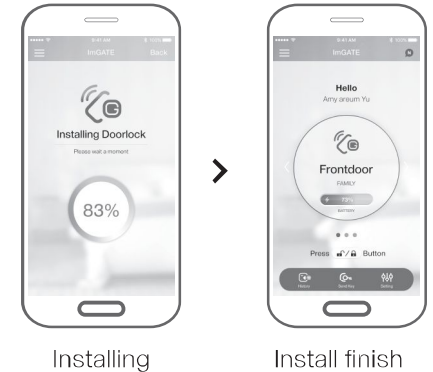
**STEP.02** Make door lock setting mode



ENTER button  
**'Flash ORANGE'**

When ORANGE flashes setting mode will last 15 seconds.  
So try connect within 15 seconds.

**STEP.03** Finish



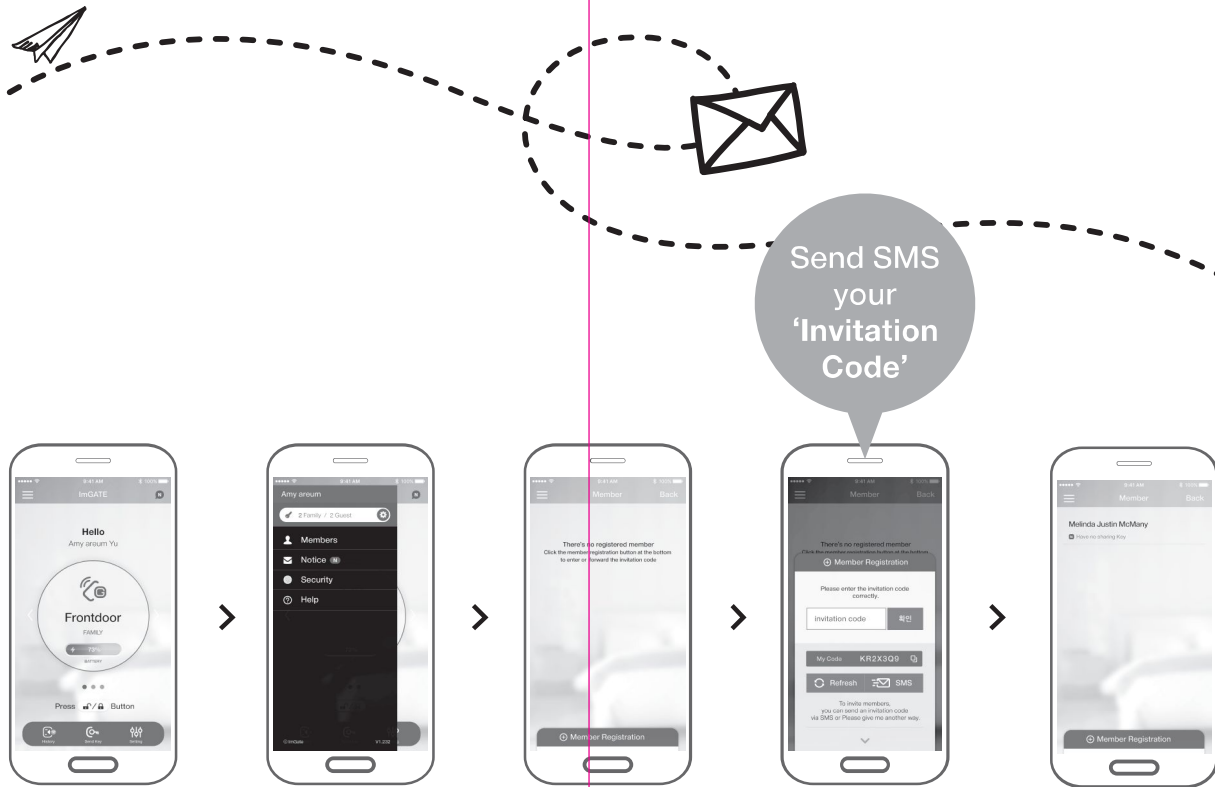
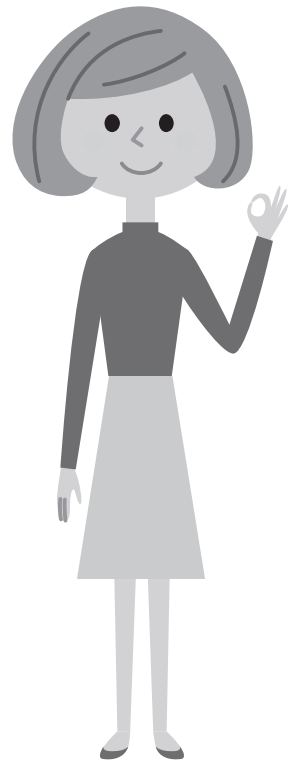
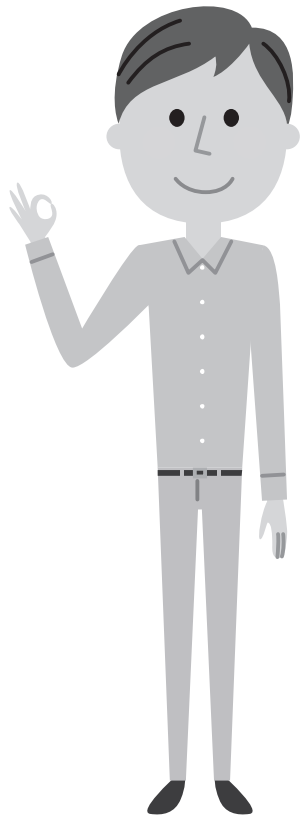
When you install the door lock, please place your smartphone near the door lock for the best connection environment.

Q

I'd like to add my family in member list

A

You can send your Invitation Code to family and friends. Once listed each other, you can send Family Key or Guest Key.



Touch ☰ button

Touch 'Members'

Touch below 'Add member'

Input 'Invitation Code' from friends or Send 'My Invitation Code'

Member added

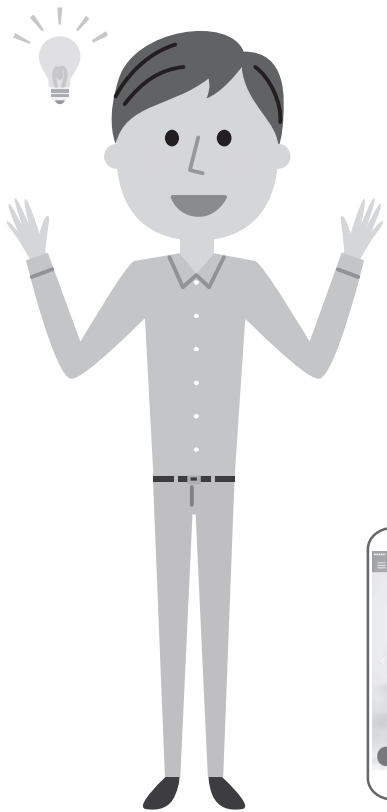
Mobile Key(Family Key or Guest Key) should be sent only after you add family or friends in member list using Invitation Code.

Q

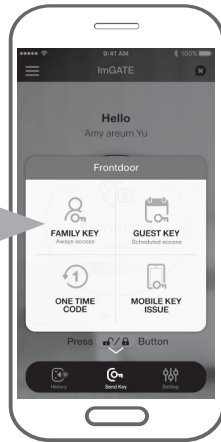
Only Dad has Family Key and I'd like to have one. How can I get it?

A

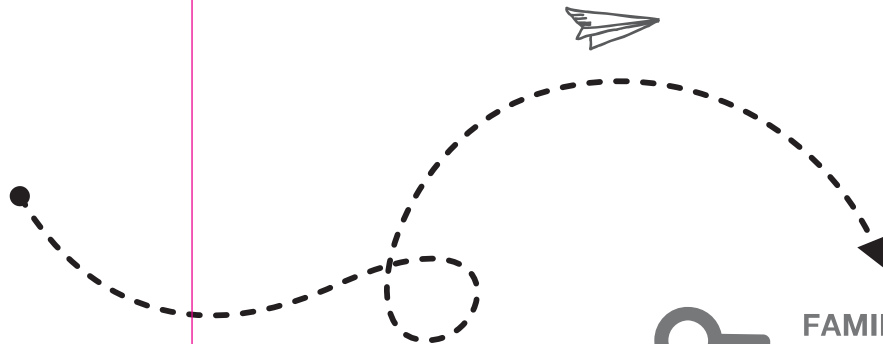
Dad can send Family Key remotely.



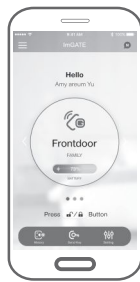
Send 'FAMILY KEY'



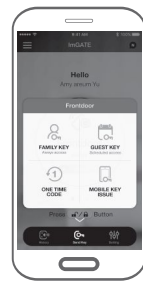
Touch 'Send Key'



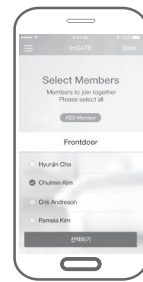
**FAMILY KEY**  
can be sent up to 8 people including me :)



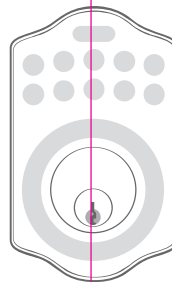
Touch 'Send Key'



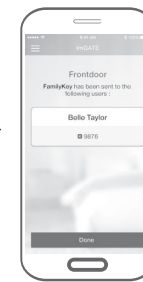
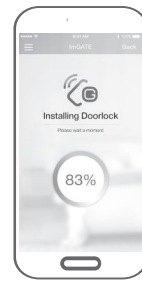
Touch 'FAMILY KEY'



Choose Member who receive Family Key

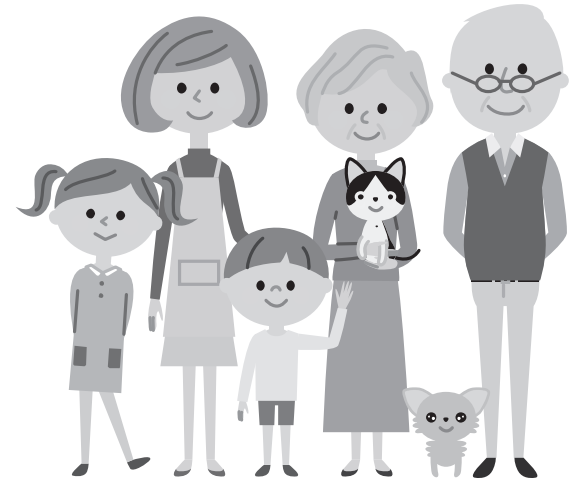


Change to door lock setting mode to send Family Key



Family Key sent

BLE



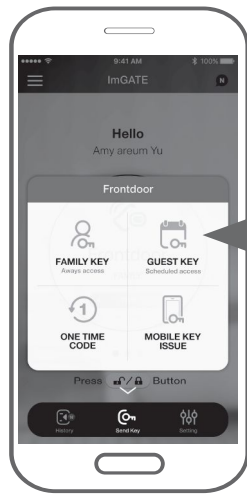
Q

Can I use this door lock for my Airbnb guest with limited access?

A

Of course! :) You can send Guest Key using APP.  
(Guest Key can be set Max. 30 days.)

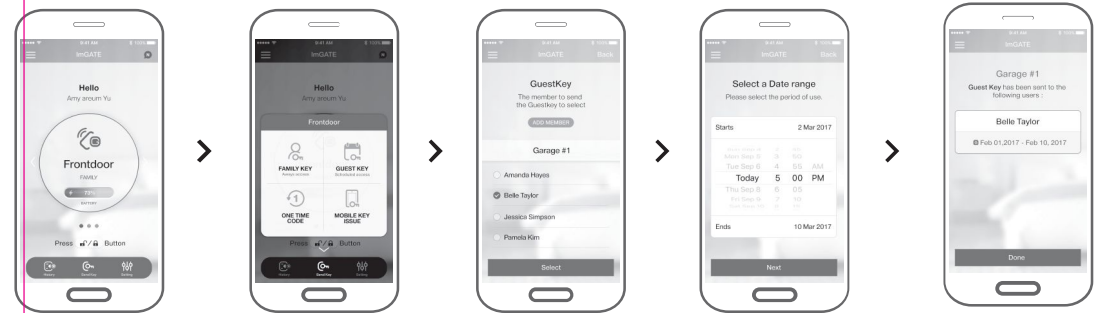
GUEST KEY  
can be used  
**Max. 30 days**  
/up to 16 keys  
at the same time.



Send  
GUEST  
KEY

Touch 'Send Key'

ONLY FAMILY KEY USER CAN SEND GUEST KEY.



Touch 'Send Key'

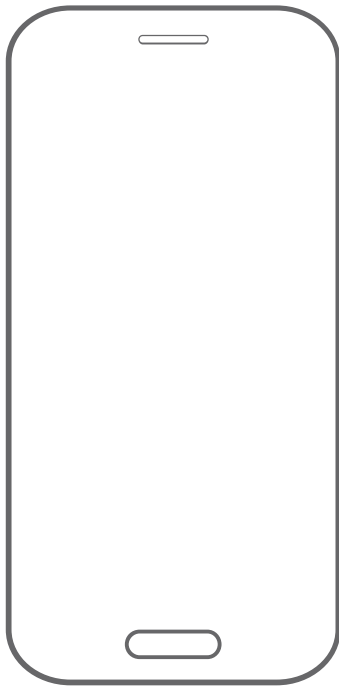
Touch 'GUEST KEY' (Only Family Key user)

Choose member who receive Guest Key

Select schedule Max. 30 days

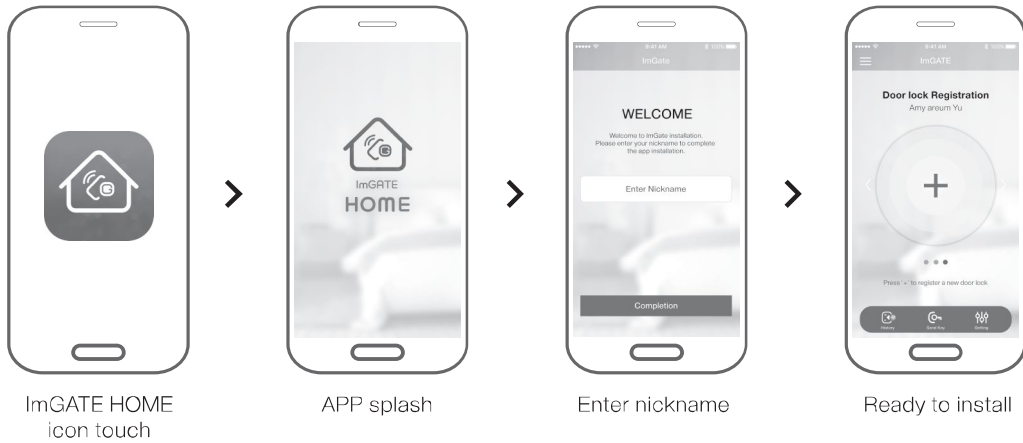
Guest Key sent

Member should be listed in Member list before you send Guest Key. Please add member first.



## **APP SETTING**

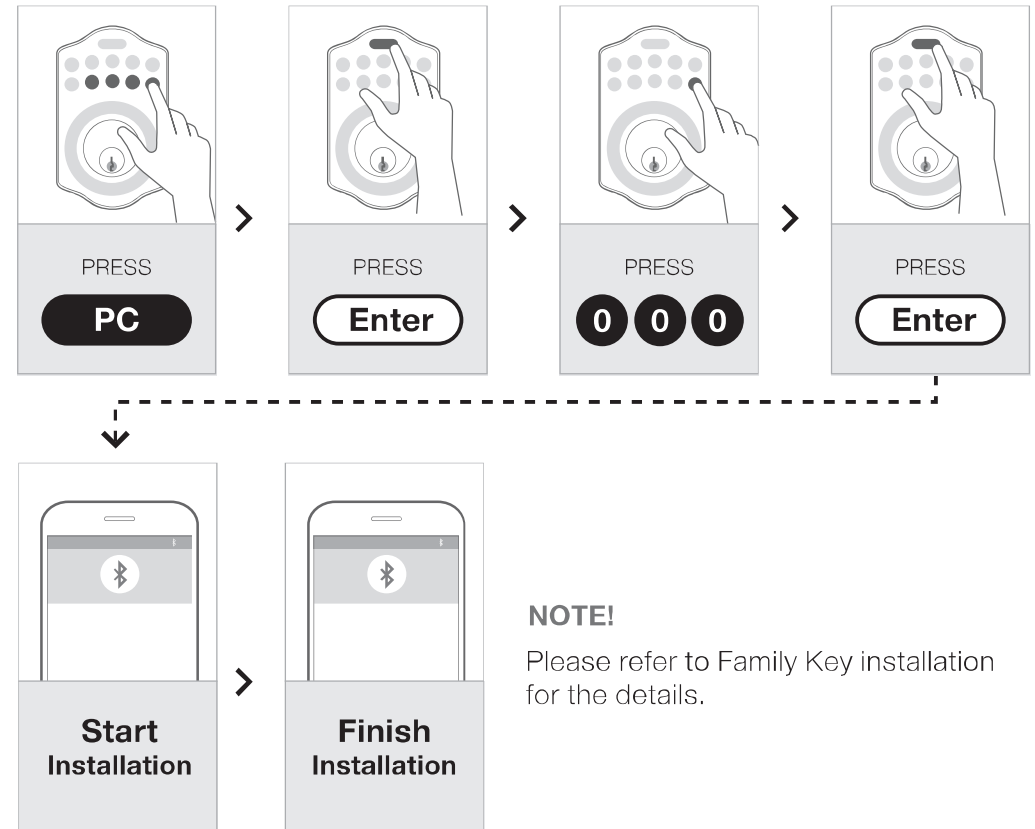
## Mobile Key Preparation



### REMARK

Nickname is ImGATE APP user name.  
It could be maximum 30 characters and can be changed at any time.

## APP Install to Door lock



### NOTE!

Please refer to Family Key installation for the details.

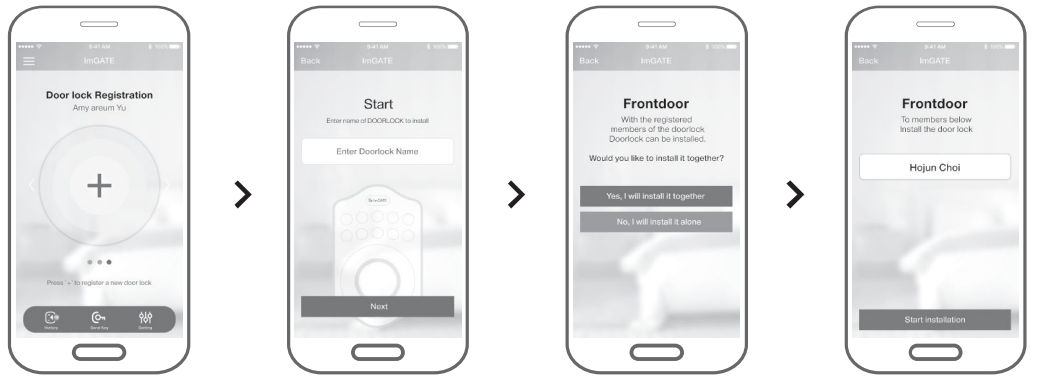
### REMARK

If you wish to open the door using smartphone, you should install the APP to door lock first. Please follow the instruction above.

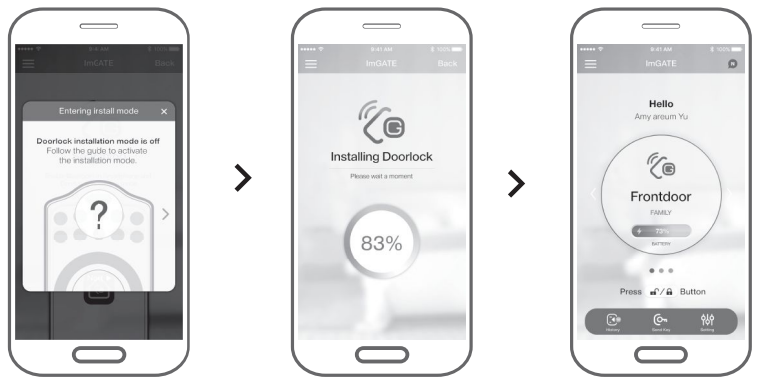
Function code is [000].

**MAKR SURE YOU TURN ON BLUETOOTH ON YOUR SMARTPHONE.**

## Family Key Installation (My phone only)



Touch "+"      Enter Door lock name      Touch "No, I will install it alone"      Check member name

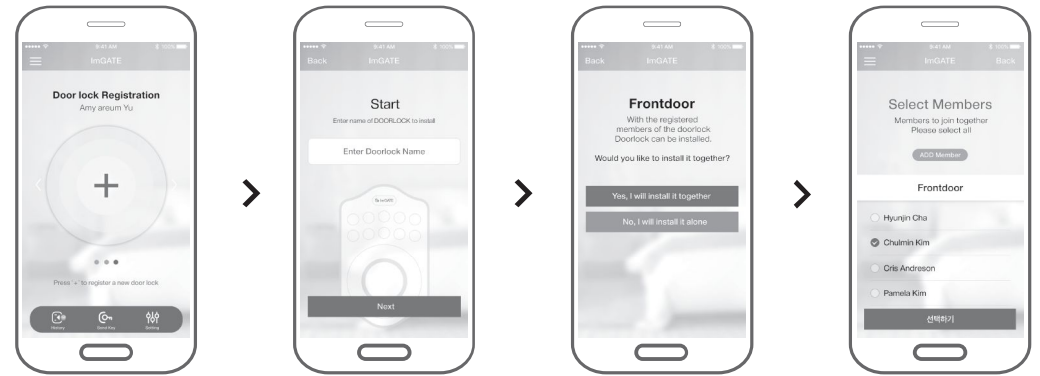


Installation guide      Installing      Mobile Key installed

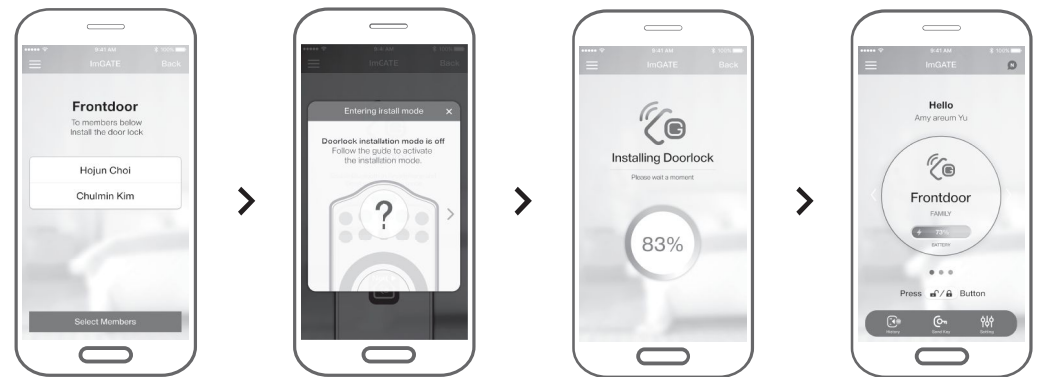
### REMARK

There are two options to install Family Key in smartphone.  
 If you choose "My phone only", Family Key will be installed in your smartphone.  
 You can also add Family Key other members.  
 Up to 8 Family Key would be installed.

## Family Key Installation (Together)



Touch "+"      Enter Door lock name      Touch "Yes, I will install it together"      Choose the member



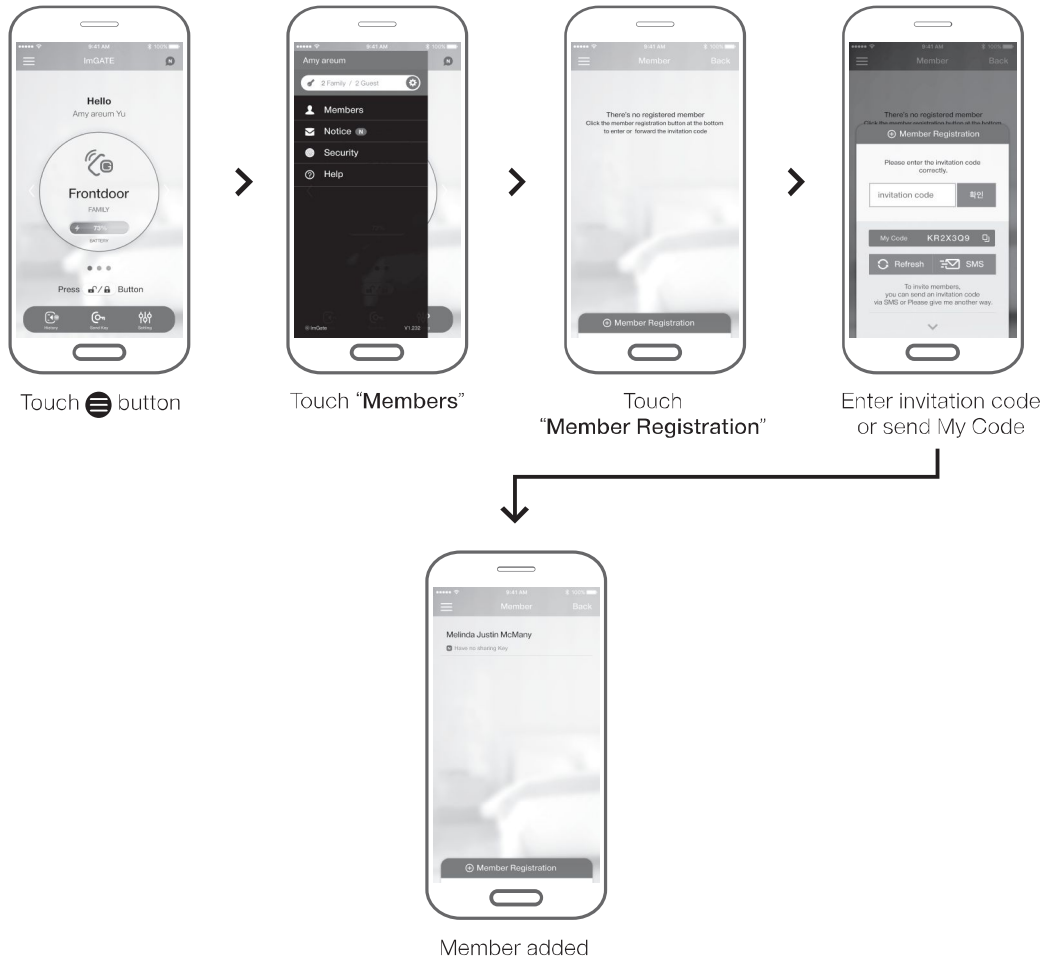
Check member name      Installation guide      Installing      Mobile Key installed

### REMARK

If you choose "Together", Family Key will be installed in selected member's smartphone. Up to 8 Family Key would be installed.  
 If you wish to share Mobile Key to other people, you can use Guest Key.  
 (Refer to Send Guest Key)



## Add Members



### REMARK

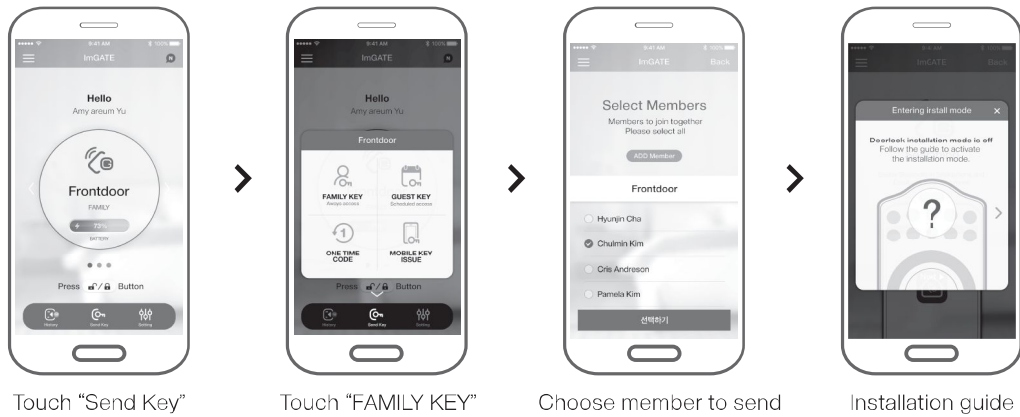
To add member, enter invitation code(from other member) or you can send your invitation code (My Code) by SMS.  
Make sure once you refresh 'My Code', previous one is invalid.

## List of Members



No.	Description	No.	Description
1	Add member	4	Family Key installed
2	Member list (No Mobile Key)	5	Family Key number
3	Delete member	6	Guest Key installed

## Send Mobile Key - Family Key



Touch "Send Key"

Touch "FAMILY KEY"

Choose member to send

Installation guide



**Remove  
Battery  
Cover**

PRESS



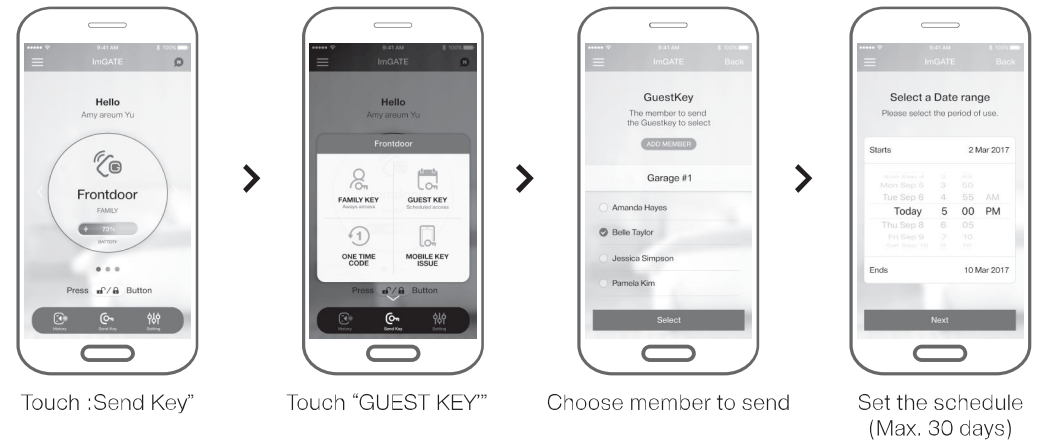
Installing

Family Key sent

### REMARK

Family Key can be installed up to 8 members (smartphone).  
To receive Family Key, door lock should be changed to setting mode.  
(Use function code [000] or pick R button twice from the interior)

## Send Mobile Key - Guest Key

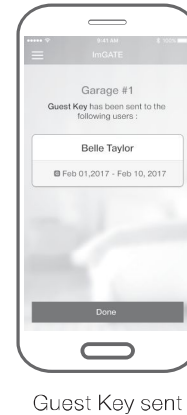


Touch :Send Key"

Touch "GUEST KEY"

Choose member to send

Set the schedule  
(Max. 30 days)



Guest Key sent

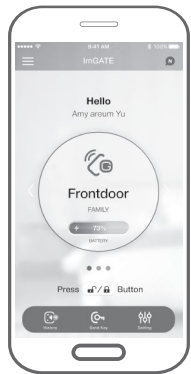
### NOTE!

Expired Guest Key can't be extended.  
Please send new Guest Key.

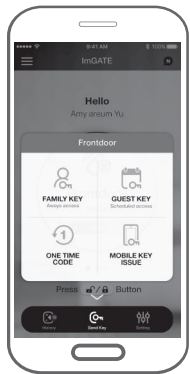
### REMARK

Only Family Key user can send Guest Key. It can be scheduled maximum 30 days and can be sent up to 16 Guest Key based on each door lock.  
If you wish to suspend Guest Key go to 'Setting' on your APP.

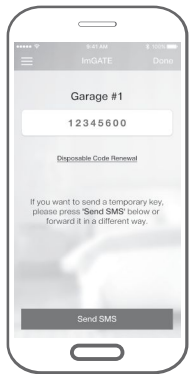
## Create One Time Code



Touch "Send Key"



Touch "ONE TIME CODE"

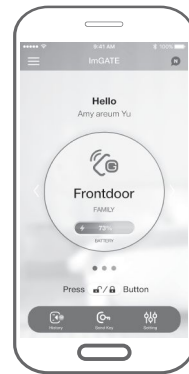


One Time Code created

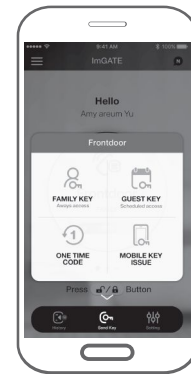
### NOTE!

One Time Code can be used only once.

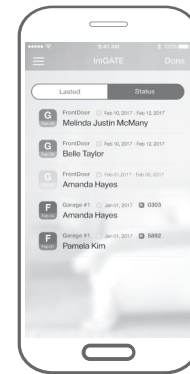
## Issued Mobile Key List



Touch "Send Key"



Touch "MOBILE KEY ISSUE"



List of issued Mobile Key

## Mobile Key Icon Status

Icon	Description	Icon	Description
	Issued Family Key		Issued Guest Key (in use)
	Issued One Time Code		Issued Guest Key (expired)

### REMARK

One Time Code can be created by APP setting.  
One Time Code is not reusable.  
If you need new One Time Code, you can renew the code.

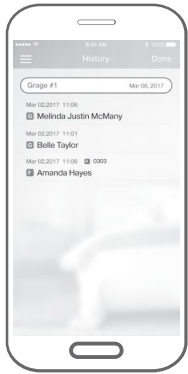
### REMARK

Only Family Key user can check issued Mobile Key list.

## Door lock Open History (Using Smartphone Only)



Touch "History"



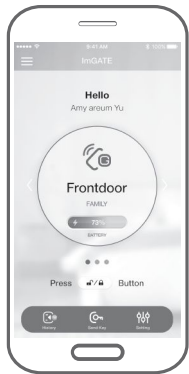
Open history

Icon	Description
	Open history by Family Key
	Open history by Guest Key

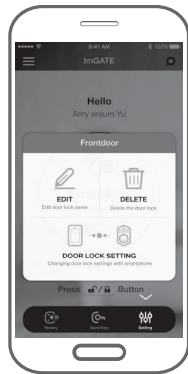
### REMARK

Open history will be listed when you open the door using APP only. It will be listed recent open and classified by Family Key or Guest Key. Only Family Key user can check door lock open history.

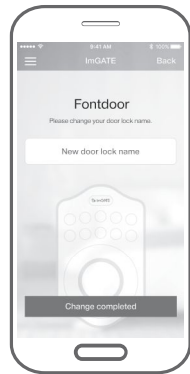
## Change Door lock Name



Touch "Setting"

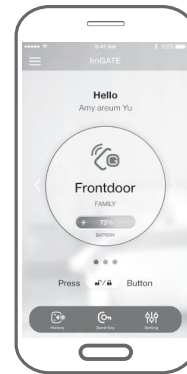


Touch "EDIT"

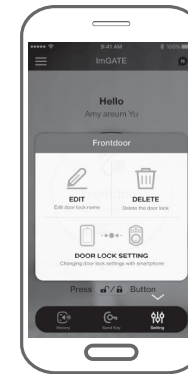


Change Door lock name

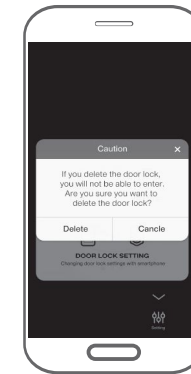
## Delete Door lock



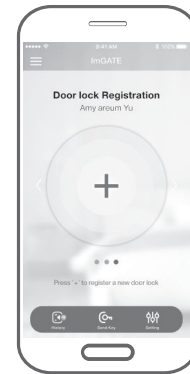
Touch "Setting"



Touch "DELETE"



Delete message



Deleted  
(Main screen)

### REMARK

You can change Door lock name.

### REMARK

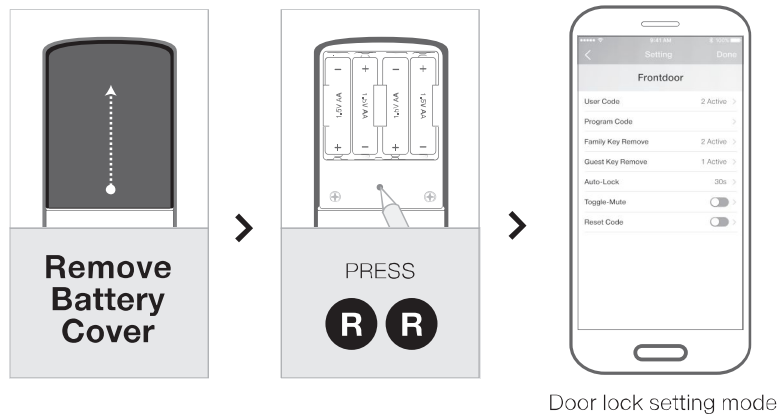
Delete door lock from APP. All Mobile Key in this smartphone will be deleted as well.

If you wish to install the Mobile Key, you can re-install it.

Family Key can be installed up to 8.

Guest Key can be installed up to 16 at the same time.

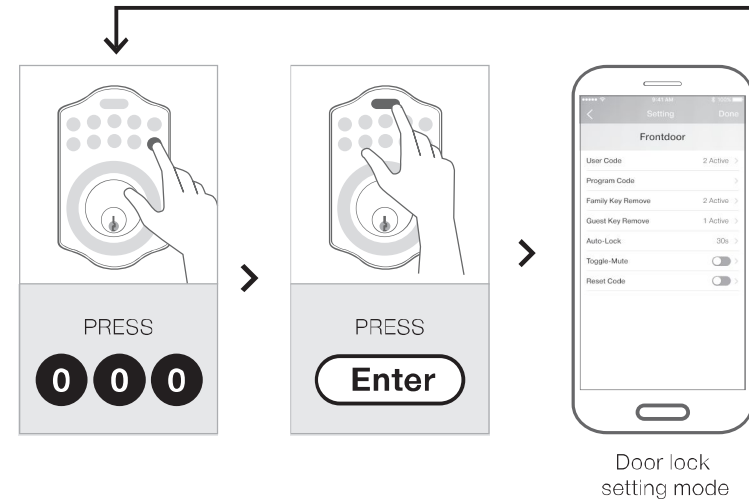
## Door lock Setting Using APP ( Opened/ Inside )



### REMARK

Only Family Key user can change door lock setting using APP.  
When you go to setting mode, you can change many door lock functions using APP.

## Door lock Setting Using APP ( Closed / Outside )



### REMARK

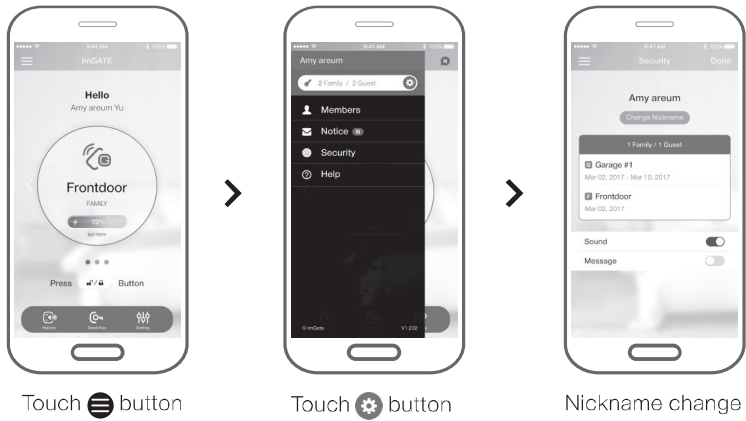
Only Family Key user can change door lock setting using APP.  
Even though you are outside, you can change the door lock setting using APP.

## Door lock Setting using APP

Setting Menu	Description
User Code	<ul style="list-style-type: none"><li>- Add new UC and delete existing UC (Up to 6 UC)</li><li>- Activate/ Deactivate all UC</li></ul>
Program Code	<ul style="list-style-type: none"><li>- Change PC</li></ul>
Mobile Key	<ul style="list-style-type: none"><li>- Family Key list (Mobile Key number)</li><li>- Delete registered Guest Key</li><li>- Activate/ Deactivate Guest Key</li></ul>
Door Auto-Lock	<ul style="list-style-type: none"><li>- Auto-lock on/off</li><li>- Set Auto-lock time</li></ul>
Mute Door Lock	<ul style="list-style-type: none"><li>- Door lock sound on/off</li></ul>
Reset Protection	<ul style="list-style-type: none"><li>- Toggle Reset Protection on/off to prevent unauthorized restore</li><li>- When you turn on, you need to input PC before you restore</li></ul>

**SETTING CHANGE CAN BE APPLIED WHEN THE DOOR LOCK IS IN SETTING MODE**

## Change Nickname And My Mobile Key



### REMARK

You can change nickname and check my Mobile Key.

## Notice

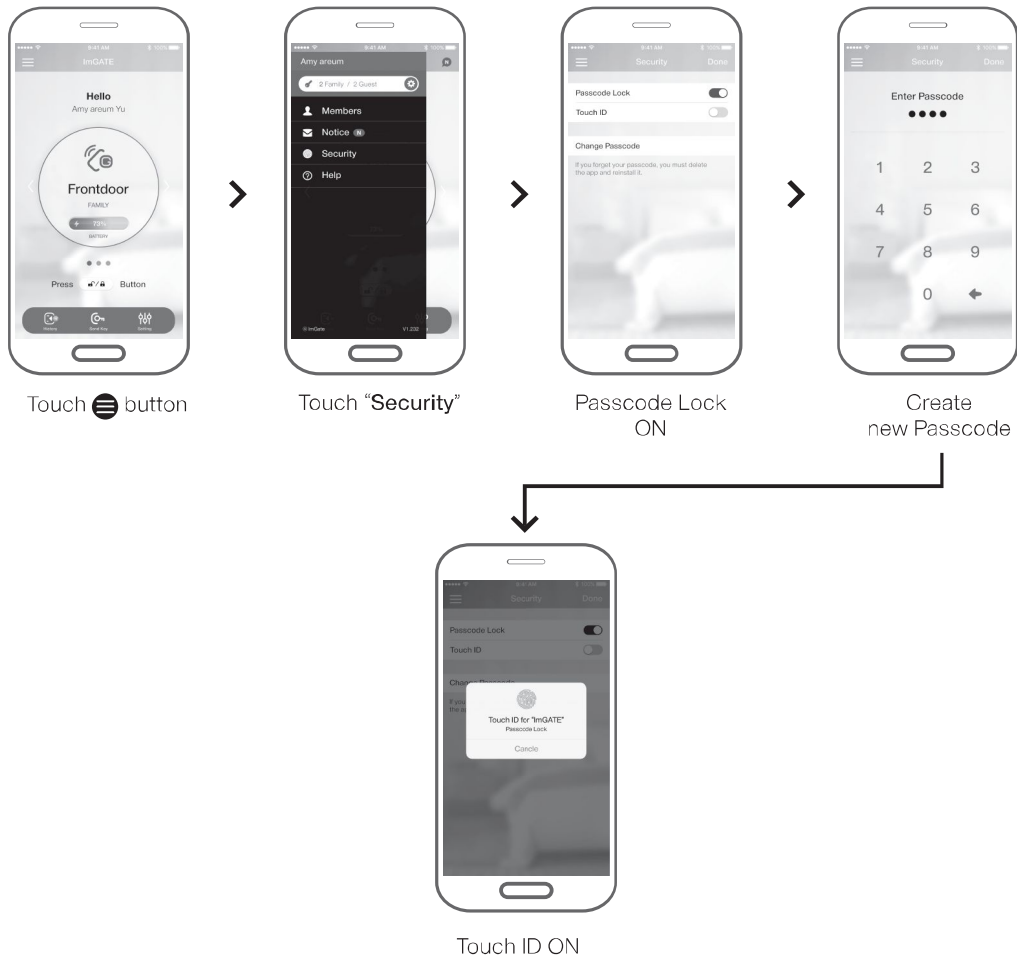


### REMARK

All the push message will be listed such as Mobile Key sent, Door lock installed, member added and etc.



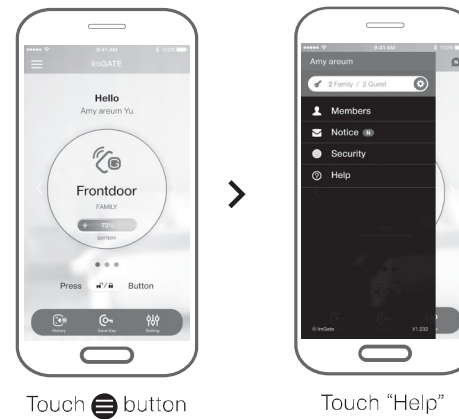
## APP Passcode/ Touch ID Setting



### REMARK

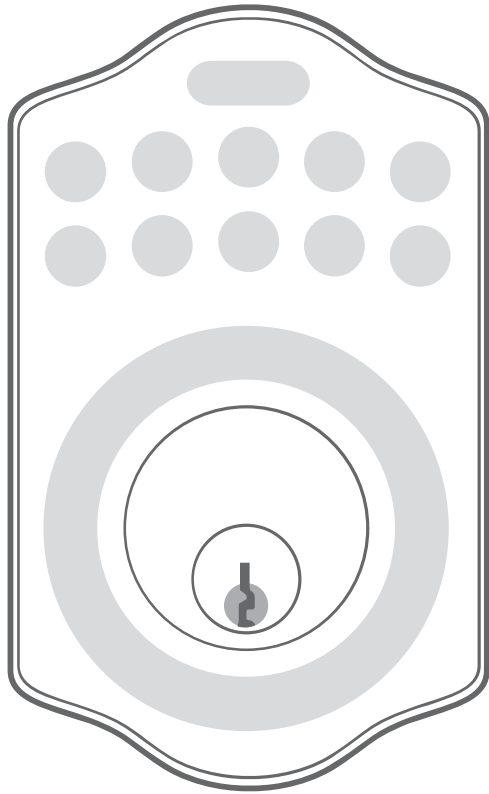
If you want to set additional security for APP, you can turn on Passcode or Touch ID.  
Once you turn on this, you should enter Passcode or Touch ID whenever you want to open the door using smartphone.

## Help



### REMARK

APP guide or useful contents will be posted.  
(It will be updated periodically.)



**DOOR LOCK  
UNLOCK/ LOCK**

# DOOR LOCK OPEN

## Unlock using UC or Key

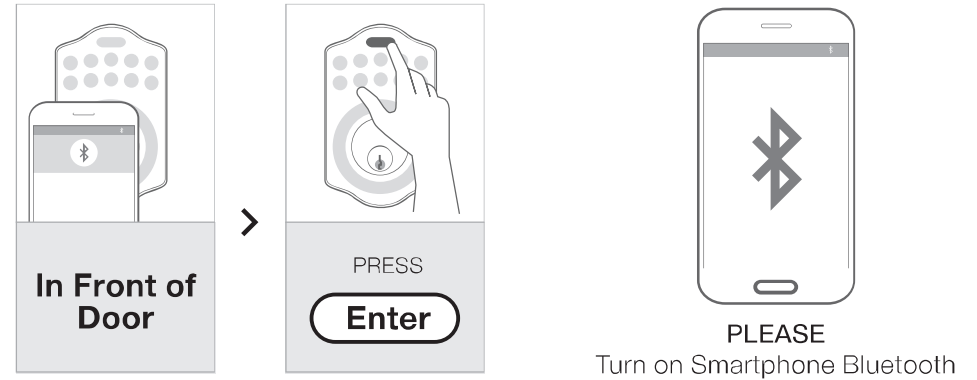


### REMARK

Press UC (4-10 digits) and Enter button to open the door.  
After install the door lock, please change preset UC for security.  
(Preset User Code : 1234)

Turn the Key clockwise to open the door.

## Unlock using Smartphone



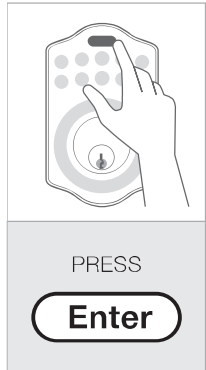
### REMARK

When user approaches the door, door lock Bluetooth will be activated automatically. So user can open the door by pressing the Enter button on the door lock.

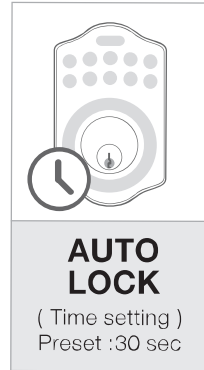
**TO USE THIS FUNCTION, YOU SHOULD RECEIVE THE MOBILE KEY AFTER INSTALL YOUR SMARTPHONE TO DOOR LOCK.**

# DOOR LOCK CLOSE

## Manual Lock



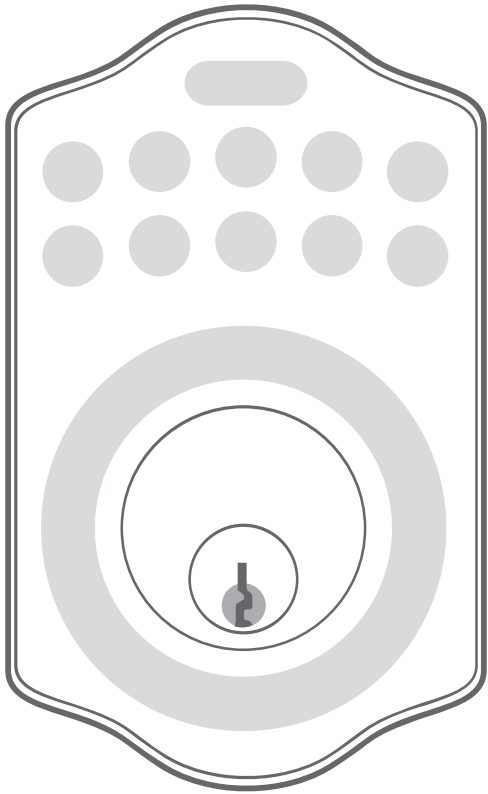
## Auto Lock



### REMARK

To lock the door manually, please press Enter button after open the door.

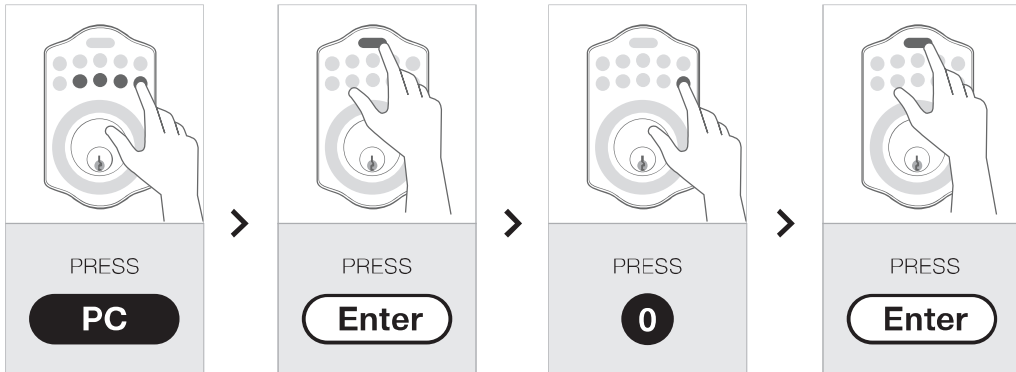
If you set the Auto-lock function, door lock will be locked automatically after you close the door. Preset Auto-lock time is 30 seconds. Auto-lock time can be changed if needed.



## **DOOR LOCK SETTING**

# DOOR LOCK INITIAL SETTING

## Left/Right Hand Door Setting

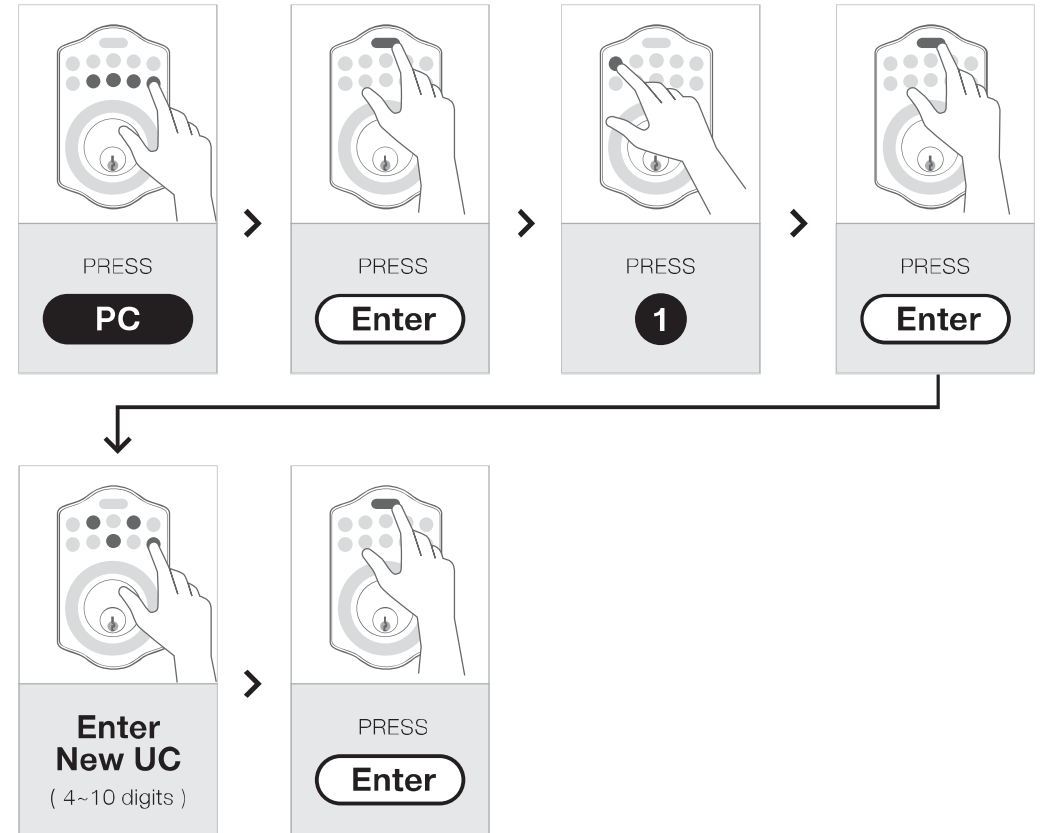


### REMARK

Once you install the door lock to door, you should set the door open direction. If you skip this step, door lock doesn't work correctly. Preset Programming Code is [0000].

**MAKE SURE THE DOOR IS OPEN AND WHILE PROGRAMMING DO NOT LOCK THE DOOR.  
WHENEVER YOU RESTORE THE DOOR LOCK, PLEASE PROCEED THIS STEP FIRST.**

## Add New UC

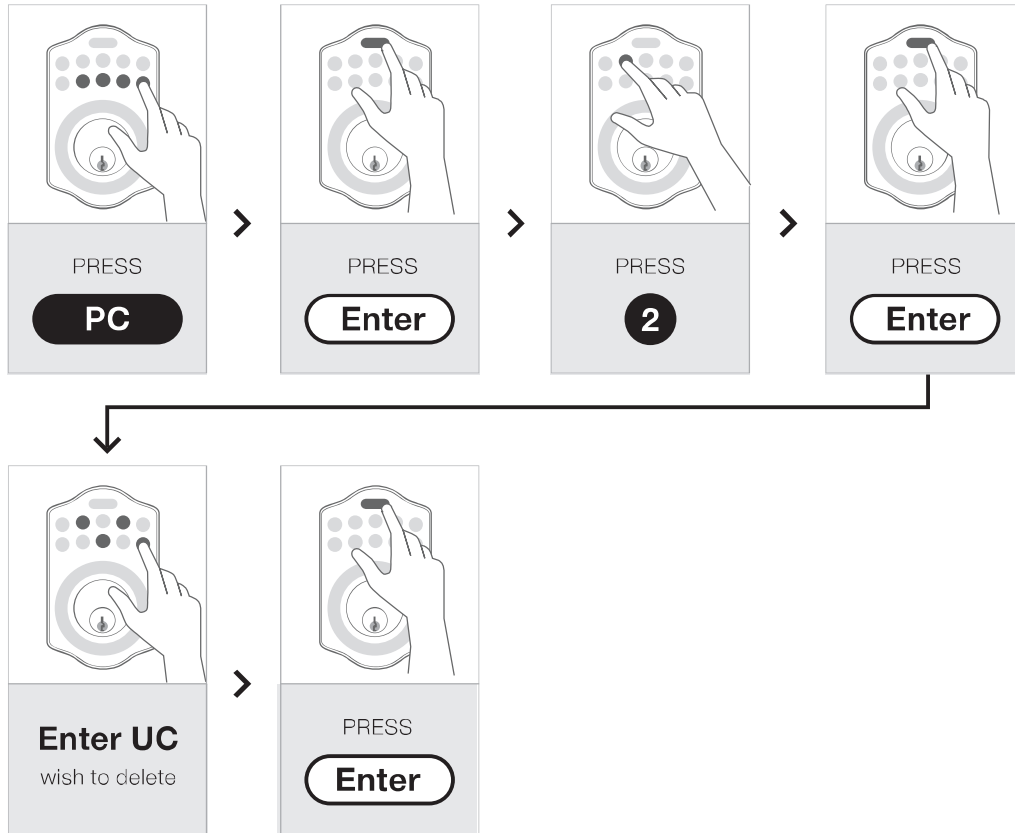


### REMARK

Up to 6 sets of UC can be stored and UC should be 4-10 digits in length. Preset UC is [1234]. For the security, please delete preset UC and add new UC.

# DOOR LOCK SETTING

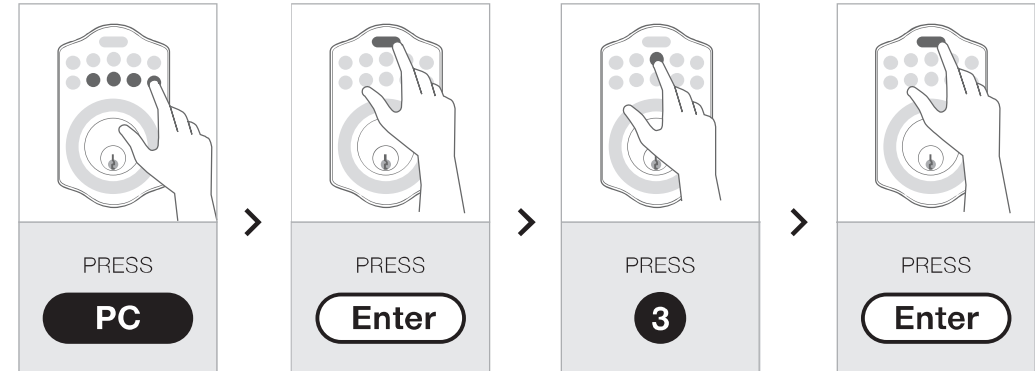
## Delete a Registered UC



### REMARK

You can delete stored UC including preset UC [1234]. Deleted UC can't be used to open the door once you delete it. But you can add as new with same UC after delete. Make sure if you have 6 sets total, you need to delete one UC and add new.

## Delete All UC at Once

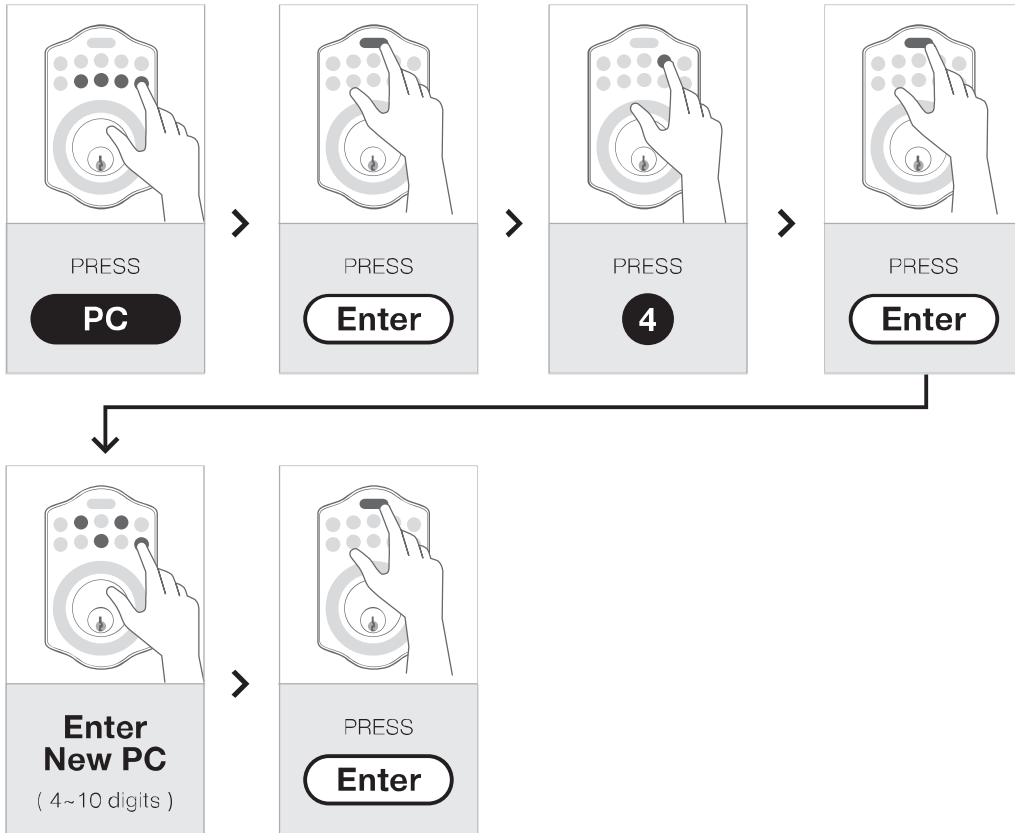


### REMARK

All UC can be deleted at once. If there's no UC including One Time Code, Auto-lock and Keypad lock function will be invalid. In this situation, door lock can be operated by mechanical key and smartphone APP during the time. (APP should be installed to door lock before you open the door.)

# DOOR LOCK SETTING

## Change Programming Code

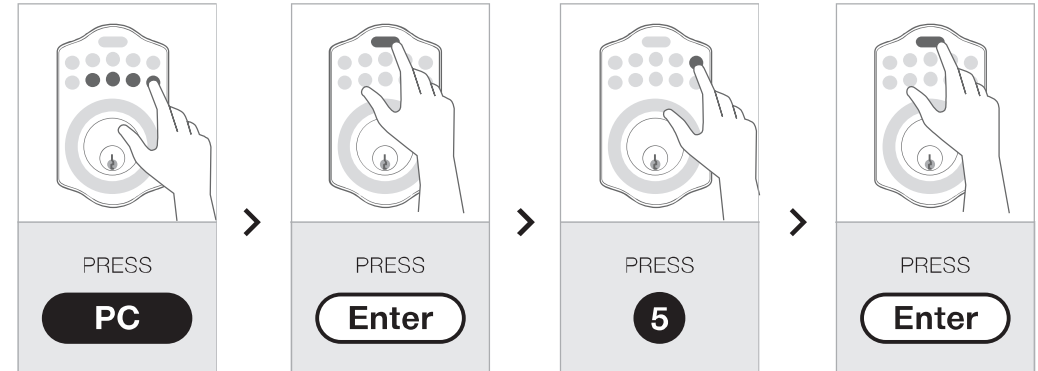


### REMARK

For the security, please change preset PC. (Preset PC is [0000].)  
You can use one PC only and it should be 4-10 digits in length.

Using APP, you can change the PC.

## Auto-lock On/Off

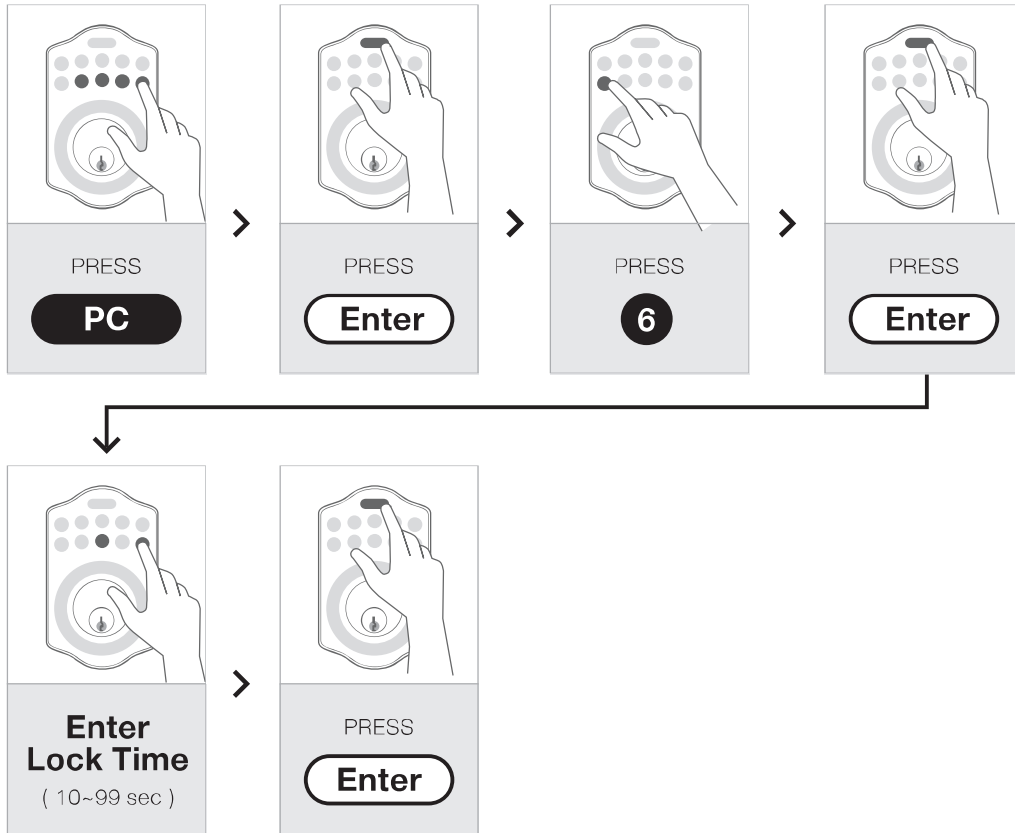


### REMARK

Preset Auto-lock function is Off. If you set Auto-lock on, door will be locked automatically after you close the door.  
Please follow the steps above if you wish to use Auto-lock function.



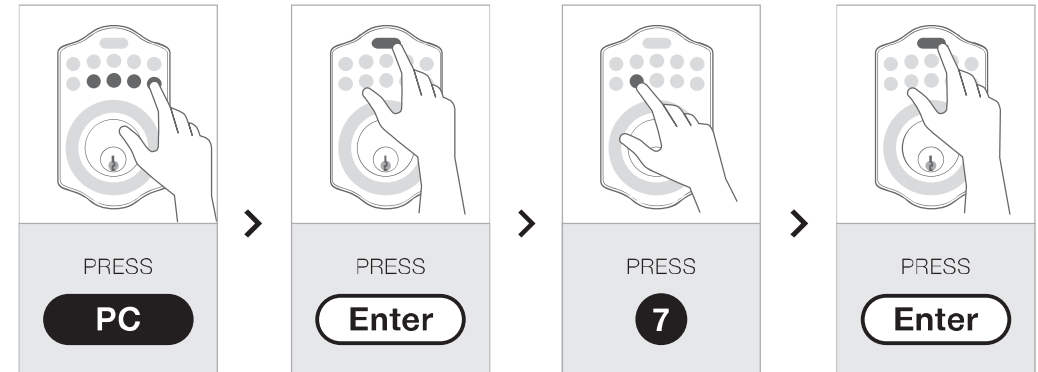
## Set Auto-lock Time



### REMARK

The preset lock time is 30 seconds.  
You can change lock time 10-99 seconds as you want.

## Button Sound On/Off ( Preset : On)



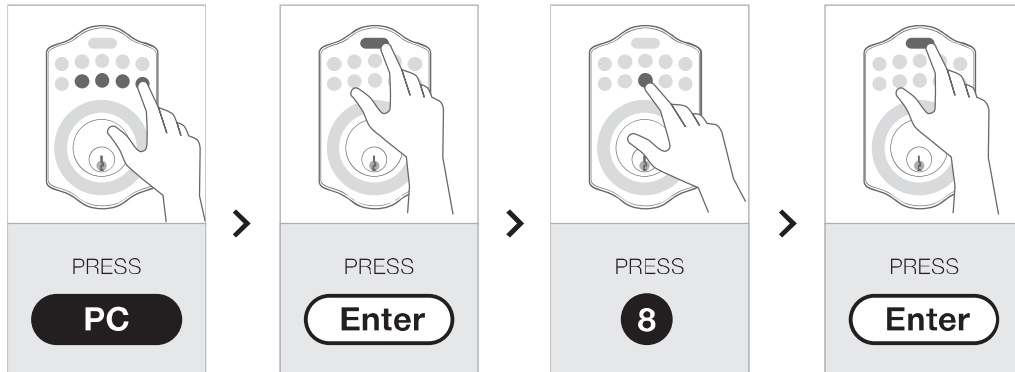
### REMARK

Button sound is on by preset. If you wish to turn off the button sound from door lock, please follow the steps above.  
LED illumination is still functioning even though the sound is off.

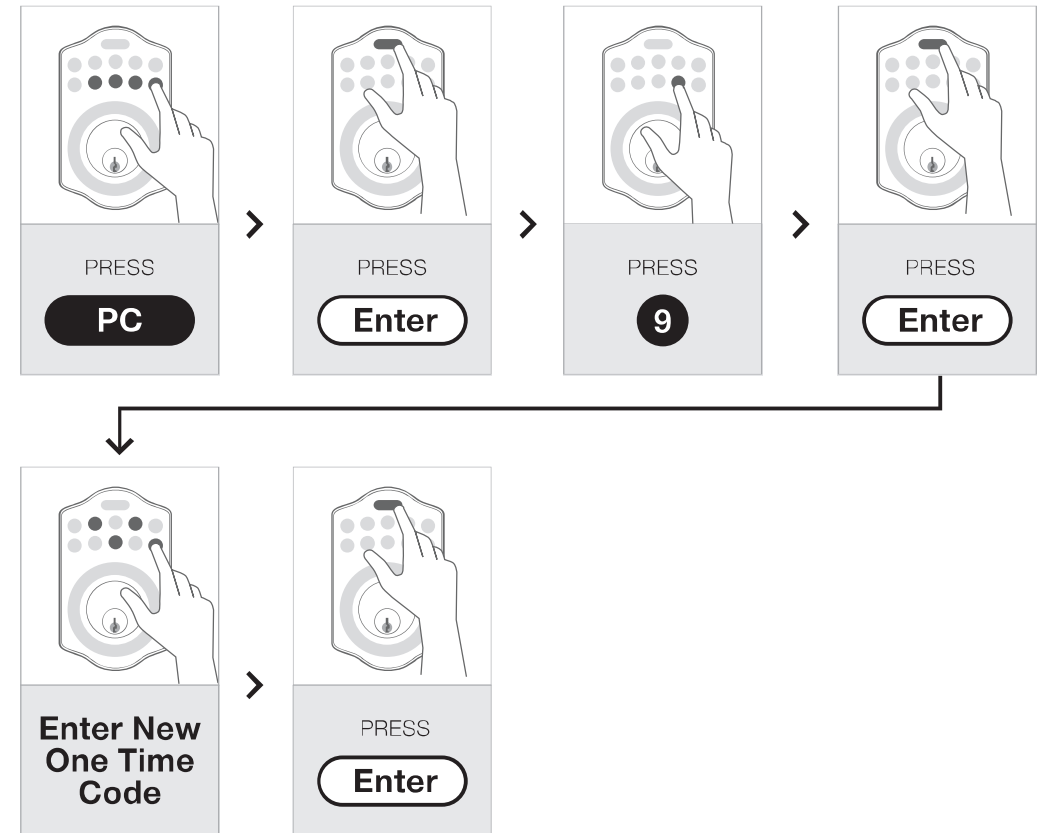
**EVEN THOUGH YOU SET MUTE, ALL THE ERROR SOUND WILL BE ALARMING.**

# DOOR LOCK SETTING

## Temporarily Disable All UC



## Create One Time Code



### REMARK

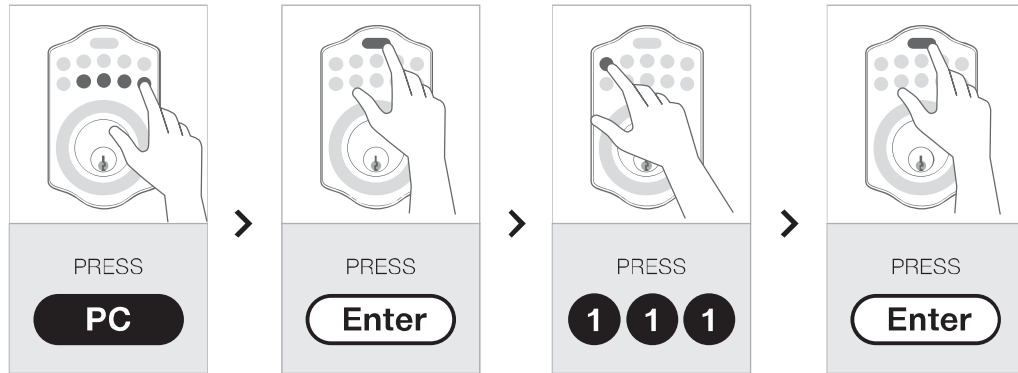
You can disable all UC including One Time Code. But if you disable all UC, Auto-lock and Keypad lock will be invalid. In this situation, door lock can be operated by mechanical key and smartphone APP during the time. (APP should be installed to door lock before you open the door.) To activate all UC again, repeat the same as above.

### REMARK

Up to 6 sets of One Time Code can be store at once. One Time Code should be 4-10 digits in length and it can be used only once. Code will be discarded after use automatically.

# DOOR LOCK SETTING

## Door lock Bluetooth On/Off

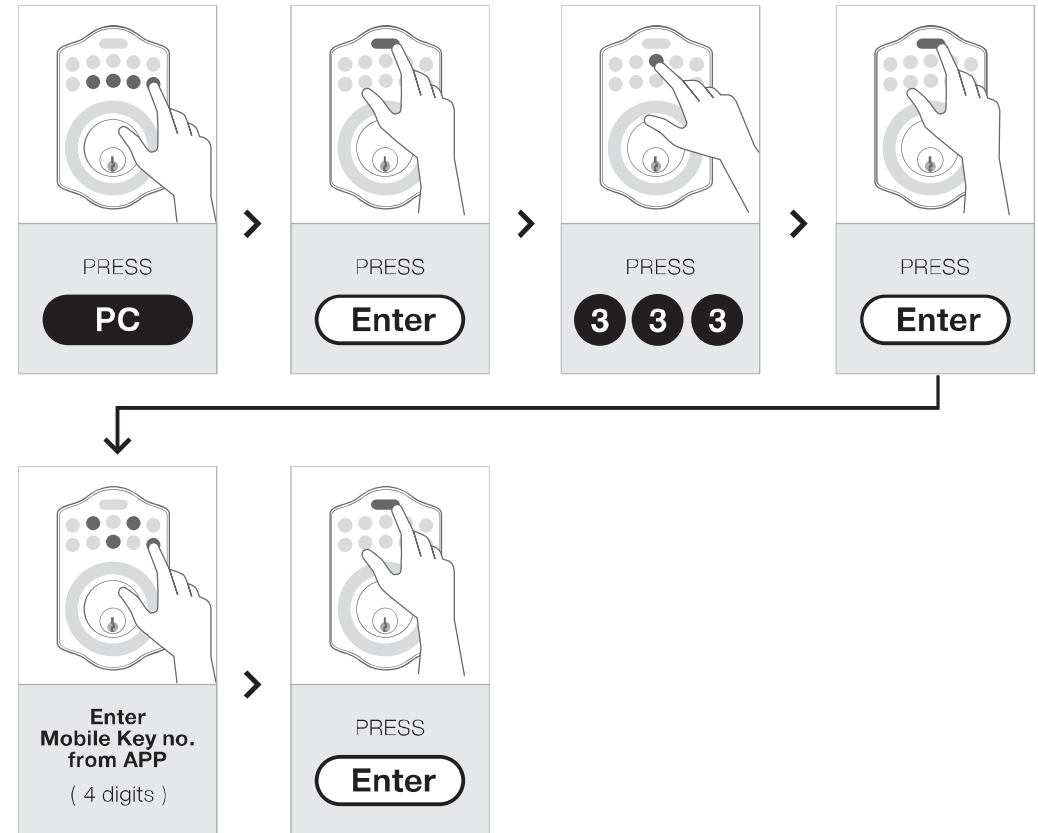


### REMARK

Preset door lock Bluetooth mode is on.  
You can turn on/off door lock Bluetooth by following the steps above.

**YOU CAN NOT OPEN THE DOOR USING SMARTPHONE  
IF YOU TURN OFF DOOR LOCK BLUETOOTH.**

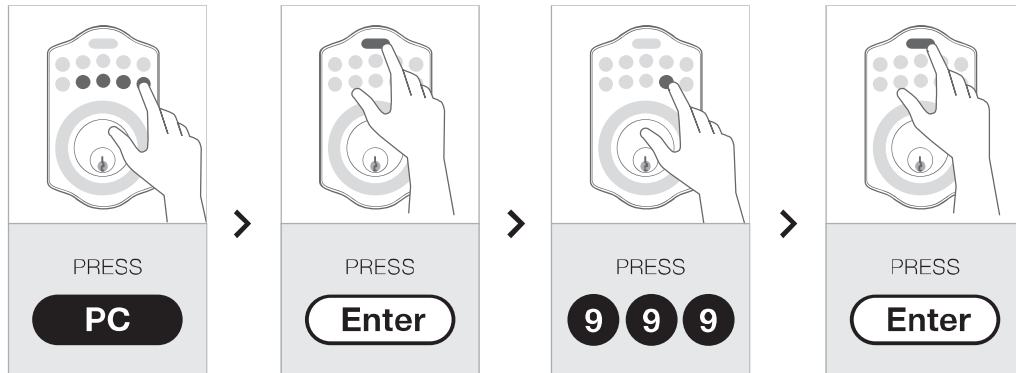
## Mobile Key install in Door lock



### REMARK

You can use this function when one of your family members lost smartphone that installed in door lock.  
From the smartphone APP you can check each Mobile Key number.

## Prevent Unauthorized Restore



### REMARK

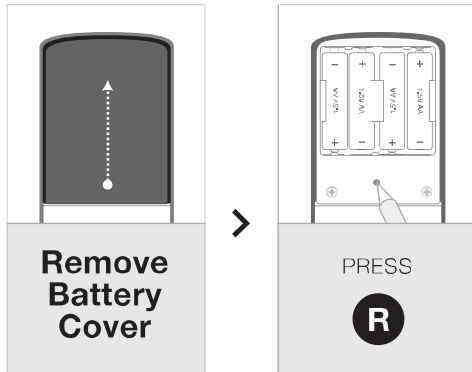
If you want to prevent unauthorized restore, you can set using PC when you restore the door lock.  
Once you set it, you should input PC whenever you restore it.  
You also can deactivate this function by following same steps.  
(Preset restore is pushing R button from interior.)

## REGULATORY COMPLIANCE

This product complies with standards established by the following regulatory bodies: • Federal Communications Commission (FCC) • Industry Canada

**FCC** This device complies with Part 15 of the FCC Rules. Operation is subject to the following two conditions: ( 1 ) this device may not cause harmful interference, and ( 2 ) this device must accept any interference received, including interference that may cause undesired operation. This equipment has been tested and found to comply with the limits for a Class B digital device, pursuant to Part 15 of the FCC Rules. These limits are designed to provide reasonable protection against harmful interference in a residential installation. This equipment generates, uses, and can radiate radio frequency energy and, if not installed and used in accordance with the instructions, may cause harmful interference to radio communications. However, there is no guarantee that interference will not occur in a particular installation. If this equipment does cause harmful interference to radio or television reception, which can be determined by turning the equipment off and on, the user is encouraged to try to correct the interference by one or more of the following measures: • Reorient or relocate the receiving antenna. • Increase the separation between the equipment and receiver. • Connect the equipment into an outlet on a circuit different from that to which the receiver is connected. • Consult the dealer or an experienced radio/TV technician for help. **IMPORTANT !** Changes or modifications not expressly approved by the manufacturer could void the user's authority to operate the equipment.

## Door lock Restore 1 - Preset

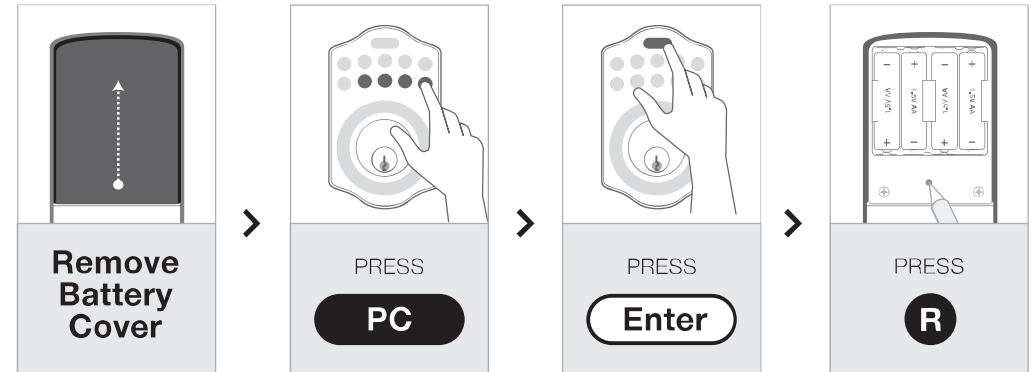


### REMARK

From the inside, press R button for 5 seconds, you will hear 3 long beeps which means completed.  
After restore, you should set the door open direction (Left or Right).

**PREVENT UNAUTHORIZED RESTORE IS OFF.**

## Door lock Restore 2 - Using PC



### REMARK

If you want to restore using PC, you need to set using Function code [999].  
Please follow the instruction above to finish restoring.  
After restore, you should set the door open direction (Left or Right).

**PREVENT UNAUTHORIZED RESTORE IS ON.**

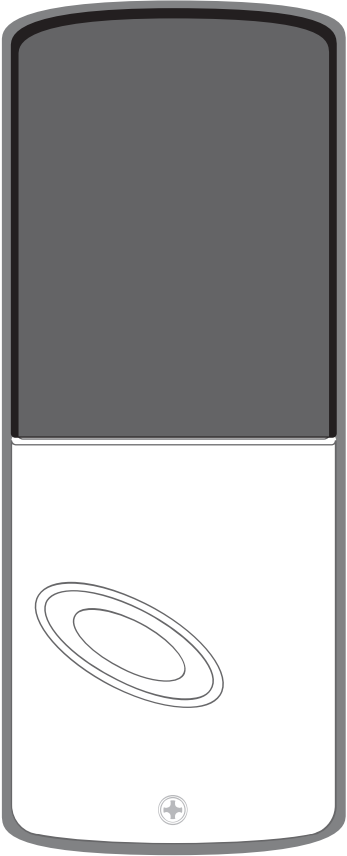
## Sound Guide

Status	Sound
Button push	Short beep * 1
Door open	Beep * 1
Door close	Beep * 1
Daedbolt error	Beep * 3
Error / Time out	Beep * 3
Programming start	Beep * 1
Programming finish	Beep * 2
Restore	Long Beep * 3
Wrong UC 5 times	Long Beep * 5
Low battery	Long Beep * 10
Bluetooth setting mode	Beep * 4
Power on	Do-Re-Mi

## LED Guide

Status	LED Effect
Button push	All Number button BLUE ON/ Enter button GREEN ON (Flash whenever you push)
Door open	All Number button BLUE ON/ Enter button GREEN ON
Door close	All Number button BLUE ON/ Enter button GREEN ON
Error/ Time out	Enter button flashes RED 3 times
Programming start	Enter button flashes ORANGE 5 times
Programming finish	Enter button flashes GREEN 2 times
Restore	Enter button flashes RED 2 times
Wrong UC 5 times	All Number button and RED Enter button flashes 3 times
Low battery	Enter button flashes RED 10 times
Bluetooth scanning	Number button flashes left→right and right→left
Bluetooth connecting	All Number button ON/ Enter button flashes GREEN
Door lock setting mode	Number button keep flashing left→right/ Enter button keep flashing ORANGE

I'm Smart, I'm Unique, I'm Secure



 ImGATE

B-4F, 25 Pangyo-ro 256beon-gil, Bundang-gu,  
Seongnam-si, Gyeonggi-do 13487 South Korea