



CHAMELEON

Chameleon 8 01  
User Manual





CHAMELEON™

**NOTICE:**

This catalog provides a summary of the basic product specifications and features. Before using each product, please thoroughly read this user manual. Because of our continuous research for improvements, the contents in this catalog may be changed without prior notice. Since the image of each product is printed, the color of the photo may be different from that of the real product. This manual contains proprietary information protected by copyright. All rights are reserved. No part of this manual may be reproduced by any mechanical, electronic or other means, in any form, without prior written permission of the manufacture. We will be exempted from responsibility for any damage which may be caused by any defect of this product.



## Table of Contents

1. Hardware.....	3
1.1 Packaging.....	3
1.2 Contents.....	4
1.3 Tablet Details .....	5-7
1.4 Device Labeling and Security .....	8
1.5 Charger Details.....	9
1.6 Switch Device ON/OFF.....	9
1.7 Charge Device.....	10
1.8 Insert USB.....	11
1.9 Insert HDMI.....	11
1.10 Insert SIM.....	12
1.11 Insert SD.....	12
1.12 Insert Headphones .....	13
1.13 Tablet Lock.....	13
1.14 Stylus (Digital Signature Pen).....	14
1.15 Fingerprint Capture.....	15
1.16 General Notes.....	15
2. Troubleshooting.....	16
3. Product Specifications.....	17-19
4. Health and Safety Information.....	20

## 1. Hardware

### 1.1 Packaging


Size: 328mm x 267mm x 72mm

Weight: 1.4kg

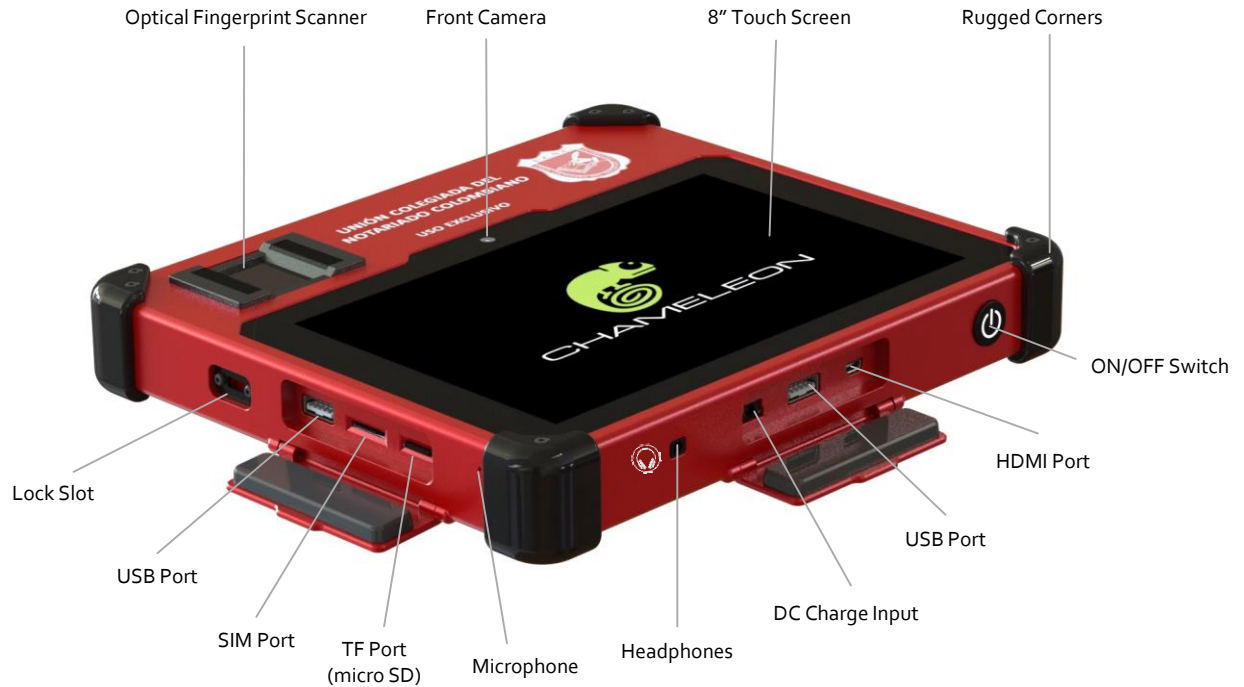


- Each Chameleon device is neatly foam-packaged inside a clearly marked carton box.
- Each box is sealed with a tamper evident seal to ensure quality and authenticity.
- Check to ensure that the 'Tracking & Security Label' on the side of box is an exact copy of the 'Tracking & Security Label' located on the back of the biometric tablet.

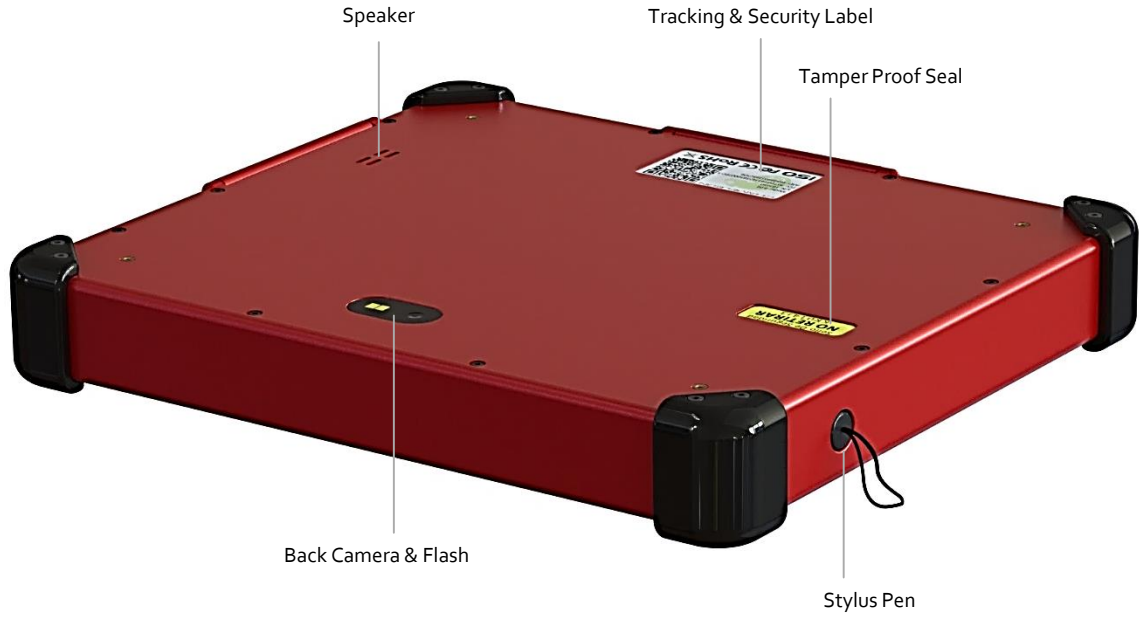
1.2 Contents

<p>1 x Chameleon Biometric Tablet (with Stylus)</p>	
<p>1 x DC Charger</p>	
<p>1 x User Manual</p>	
<p>1 x AAA Spare Stylus Battery</p>	
<p>1 x Screen Cleaning Cloth</p>	

### 1.3 Tablet Details



### 1.3 Tablet Details





### 1.3 Tablet Details

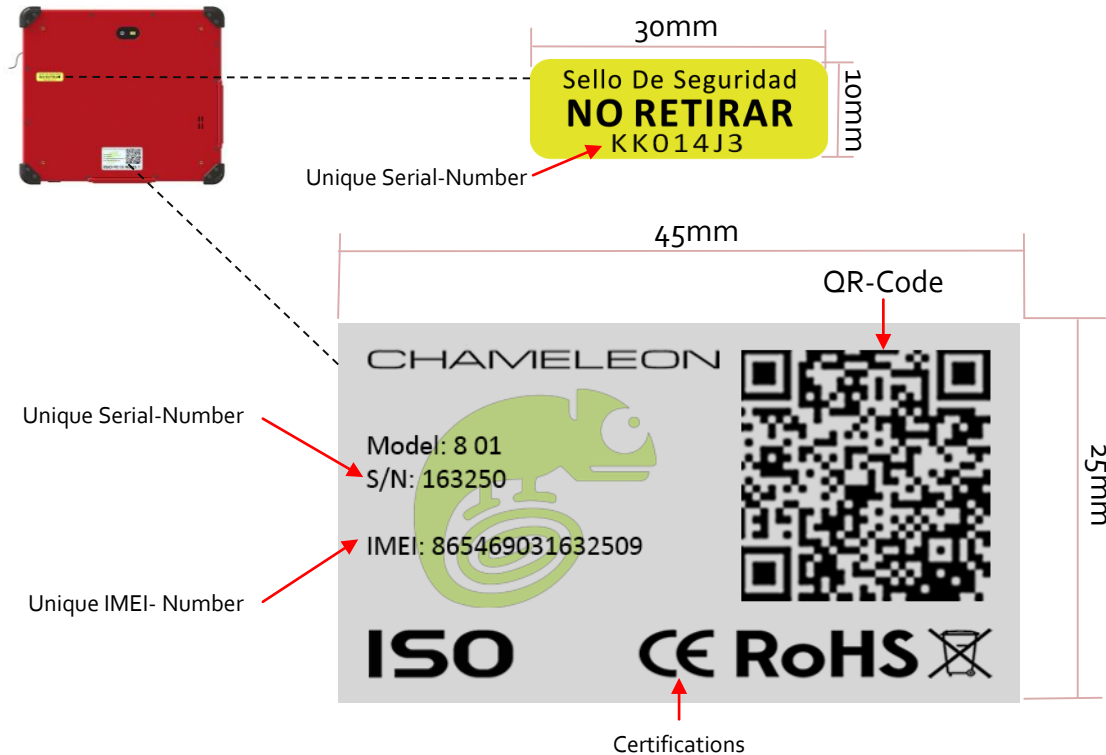
DIMENSIONS: 227mm x 197mm x 35mm

WEIGHT: 990g



#### 1.4 Device Labeling and Security

Tracking and Security Tamper Evident Labels (Located on the back of device) **DO NOT REMOVE!!!!**



### 1.5 Charger Details



- AC/DC Adapter
- Input: 100-240V~50/60Hz, 0.8A
- Output: 5V-----5.0A
- Conforms to UL STD.60950-1
- Certified to CSA STD. C22.2NO.60950-1 for I.T.E use only.

### 1.6 Switch Device ON/OFF



#### POWER ON device:

- Press and hold the power button for 3 seconds. The power button will display a blue color LED light and the screen will switch on when device is active.



#### POWER OFF device:

- Shut down Windows via the OS. The device is inactive only when blue LED light on power button turns off.
- If system can't shut down via OS, press and hold the power button for 20 seconds to initiate a complete system reset.

## 1.7 Charge Device

AC/DC Adaptor



Biometric Tablet



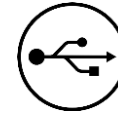
Charge when device is power-off:

- Plug AC Adaptor (Charger) into wall plug power outlet and connect the cable to Tablet.
- The blue power button LED light will turn on for 3 seconds.
- This is the indication that the device is receiving power and charging the battery.

Charge when device is power-on:

- Plug AC/DC Adaptor (Charger) into wall plug and connect cable to Biometric Tablet.
- The Battery Icon on Status Bar in Windows OS will indicate when device is charging.

1.8 Insert USB



Insert USB into any of the  
2 x available USB2.0 slots

1.9 Insert HDMI



Insert Micro HDMI into the  
one available Micro HDMI slot

### 1.10 Insert SIM



Insert Micro SIM card into SIM card slot. Make sure SIM orientation is correct as per illustration.



### 1.11 Insert SD



Insert TF (Micro SD) card into FT card slot. Make sure that the card orientation is correct as per illustration.



1.12 Insert Headphones



Insert 3.5mm Headphone Jack into Audio Socket.



1.13 Tablet Lock

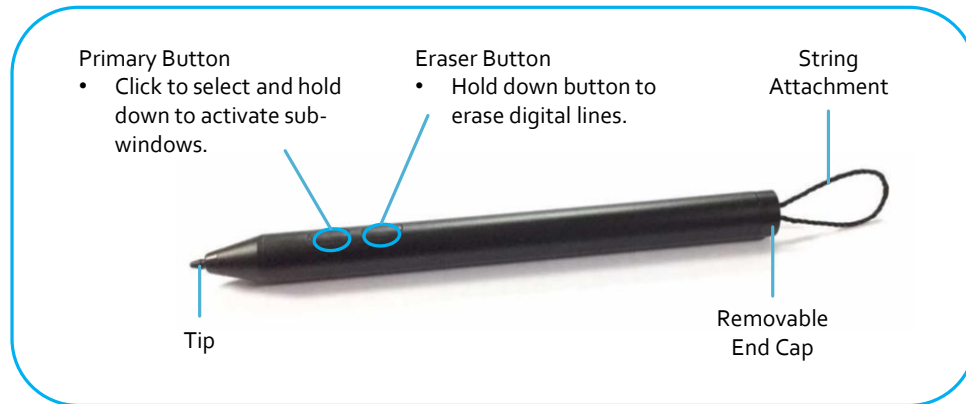


Protected by Kensington® lock compatibility



### 1.14 Stylus (Digital Signature Pen)

- The Stylus is a removable slide-in / slide-out digital pen located on the right side of biometric tablet.
- To use, simply pull Stylus out via the string attachment.



Replacing the Stylus Battery:





### 1.15 Fingerprint Capture

- The fingerprint sensor is initiated via the software and will display a red LED light on capture window when activated.
- Simply push down a single finger onto the capture window to start a scan.
- Do not use excessive force.
- The fingerprint sensor is multi-directional and can capture prints from front or back.
- Always keep capture window clean.



### 1.16 General Notes

- Your Biometric Tablet is a product of superior design and craftsmanship and should be treated with care.
- Do not use harsh chemicals, cleaning solvents, or strong detergents to clean the mobile device.
- The doors on device can only open to 140° maximum. Do not try to force the doors open wider as they will break.
- Do not remove or damage any of the 2 x tamper resistant seals on the back of device.
- Do not try to force fit any card or cable into the device ports.
- **DO NOT OPEN THE DEVICE!** Only manufacturer trained and approved technicians are allowed to open the device.





## 2. Troubleshooting

**1.Q:** *How do I reset the Stylus?*

**1.A:** Pull out and remove the tip of the Stylus. Unscrew the end cap on the back of the Stylus and remove the battery.  
- Now reconnect the battery and screw the end cap back on. Lastly push the tip of the Stylus back in.

**2.Q:** *How do I retrieve my Stylus should string attachment break?*

**2.A:** \*Use paper clip (or similar object) to slightly extrude Stylus-end and remove.

\*or Notify a trained technician to retrieve the Stylus.

NOTE: After retrieving Stylus the back end cap must be replaced with a new one.

**3.Q:** *My fingerprint reader is not detecting any fingerprints?*

**3.A:** Step 1 : Make sure the finger capture window is clean and dry.

Step 2 : Check if red LED light turns on in capture window (showing device is powered on). If light does not turn on, restart your tablet

Step 3 : If fingerprint reader is still not working, go to device manager in your Windows OS and confirm if device is detected. Also confirm that driver is installed.

Step 4: Contact your software support for help. If problem is not software related, he will contact an approved technician to open device and repair problem.

**4.Q:** *Why does my tablet not detect my sim card?*

**4.A:** Note that sim cards are not hot-swappable! Tablet must be shut down (not only restarted) before replacing sim cards. If problem persists, check if modem is detected in device manager and confirm that latest drivers are installed. Contact technical support should problem persist.

### 3. Technical Specifications

Operating System	Microsoft Windows 10 Home X64 Bit System
High Performance System	CPU: Intel® Atom™ x5-Z8350 Processor 2M Cache, 1.44GHz (up to 1.92 GHz) GPU: Gen8-LP 12EU up to 500MHz Supported Display: MIPI 1900 x 1200 @ 60fps HDMI 1.4b 1920 x 1080 @ 60fps
High Speed Internal Memory/Storage	4GB RAM DDR3L 32GB ROM (EMMC 4.51)
Display	8" 10-Point G+G Capacitive Multi-Touch LCD Display Corning Antiglare Glass, Sunlight Readable Resolution: 1200x800 Pixels, 680 cd/m2
Media Supported	H.263, MPEG4, H.264, H.265 (HEVC), VP8, VP9, MVC, MPEG2, VC1, JPEG
Cellular Connectivity	3G Modem: Fibocom H380-Q50-00 Module GSM/GPRS/EDGE Band(MHz): 850&900&1800&1900 WCDMA Band(MHz): 850&900&1900&2100 HSDPA (Mbps): 21 HSUPA (Mbps): 5.76
Wi-Fi Connectivity	802.11 b/g/n
Bluetooth Connectivity	Bluetooth 4.0
Camera	Back: Integrated 8.0 mega pixels, auto focus and LED flash Front : 2.0 Mega Pixels
GPS	Integrated Monolithic GPS and GLONASS Receiver
Sensor	3Axis Sensor



### 3. Technical Specifications

Fingerprint Scanner	Optical Single Fingerprint Sensor Resolution 500 dpi / 256 Gray Platen Size 18.0mm x 25.4mm (0.71" X 1.0") Sensing Area 17.0mm x 25.0mm (0.67" x 0.99") Image Size 320 x 480 pixels FBI PIV/FIPS 201 & FBI Mobile ID FAP20 Certified Image Quality NIST certified interoperable image & template format standards (ANSI-378/ISO 19794-2, ISO 19794-4) Image Compression Standard (WSQ) Advanced Live Finger Detection (LFD) Technology Works Under Direct Sunlight up to 100,000 Lux Enrolment Time < 0.1 second Verification Time < 0.1 second Identification Time 100,000 matches / second
Ports	2 x USB 2.0 Ports 1 x Micro SIM, 1 x Micro SD(Max Support 128Gb) 1 X Micro HDMI 1 x DC Charge Port 1 X Audio Port (Supports 3.5mm Headphone Jack)
Protective Casing	Rugged IP65 Protective Housing Anti-impact ABS-PC Shell Rubberized Corners MIL-STD-810G 1.5m Drop Tested Water Resistant, Dust Proof and Shock Resistant



### 3. Technical Specifications

Speaker	1 x 1W Speaker		
Microphone	1 x Internal Microphone		
Battery	1 x Internal Rechargeable Lithium-Polymer 3.7V/13Ah Battery		
Power Adaptor	Input: AC100-240V 50/60Hz 0.8A Max Output: +5V/5A		
Signature Stylus	Digital Signature Pen 1024 Pen Pressure Levels 0.5mm Hovering Hight 133pps Pen Digitizer Rate AAAA Battery 1.5Volt 0.6~1.6V Battery Supply Voltage Output Frequency 500KHz, approx. 1.5% Active Force between 20g and 500g Win 10 Certified		
Dimensions	227mm x 197mm x 35mm		
Weight	990g		
Environmental conditions:	Operating conditions:	Storage	
Temperature	-10°C ~ +50°C	-20°C ~ +60°C	
Humidity (non-condensing)	10%<RH<90%	5%<RH<95%	

## 4. Health and Safety Information

This section outlines the safety precautions associated with using your Chameleon Biometric Tablet.



**Warning: To avoid electrical shock, do not open device. Refer servicing and repair to qualified personnel only. Use the supplied AC adaptor only. If you use other types, it may cause fire, electrical shocks or a malfunction.**

### Operating Environment

Remember to follow any special regulations in force in any area, and always switch your mobile device off whenever it is forbidden to use it, or when it may cause interference or danger. Do not use your biometric tablet in restricted areas. Switch your mobile device off in any facility where posted notices require you to do so. When connecting the mobile device or any accessory to another device, read its user's guide for detailed safety instructions. Do not connect incompatible products. Most modern electronic equipment is shielded from Radio Frequency (RF) signals. However, certain electronic equipment may not be shielded against the RF signals from your wireless mobile device. Consult the manufacturer to discuss alternatives.

### Cautions

Any changes or modifications to your mobile device not expressly approved in this document could void your warranty for this equipment and void your authority to operate this equipment. Although your mobile device is quite sturdy, it is a complex piece of equipment and can be broken. Avoid dropping, hitting, bending, or sitting on it. Keep your Chameleon device away from liquids of any kind. Precipitation, humidity, and liquids contain minerals that will corrode electronic circuits.

### Other Important Safety Information

Only qualified personnel should service this device. Faulty service may be dangerous and may invalidate any warranty applicable to the device. Ensure that any mobile devices or related equipment used in your vehicle are securely mounted. Switch your mobile device off before boarding an aircraft. The use of wireless mobile devices in aircraft is illegal and may be dangerous to the aircraft's operation. Keep the mobile device and all its parts out of the reach of small children.



CHAMELEON

## **FCC RF EXPOSURE INFORMATION:**

**WARNING!! Read this information before using your Tablet**

In August 1986 the Federal Communications Commission (FCC) of the United States with its action in Report and Order FCC 96-326 adopted an updated safety standard for human exposure to radio frequency (RF) electromagnetic energy emitted by FCC regulated transmitters. Those guidelines are consistent with the safety standard previously set by both U.S. and international standards bodies. The design of this Tablet complies with the FCC guidelines and these international standards. Use only the supplied or an approved antenna. Unauthorized antennas modifications, or attachments could impair call quality, damage the Tablet, or result in violation of FCC regulations. Do not use the Tablet with a damaged antenna. If a damaged antenna comes into contact with the skin, a minor burn may result. Please contact your local dealer for replacement antenna.

## **BODY-WORN OPERATION:**

This device was tested for typical body-worn operations with the back/front of the Tablet kept 0cm from the body. To comply with FCC RF exposure requirements, a minimum separation distance of 0 cm must be maintained between the user's body and the back/front of the Tablet, including the antenna. Third-party belt-clips, holsters and similar accessories containing metallic components shall not be used. Body-worn accessories that cannot maintain 0cm separation distance between the user's body and the back/front of the Tablet, and have not been tested for typical body-worn operations may not comply with FCC RF exposure limits and should be avoided.

For more information about RF exposure, please visit the FCC website at [www.fcc.gov](http://www.fcc.gov)

Your wireless handheld portable Tablet is a low power radio transmitter and receiver. When it is ON, it receives and also sends out radio frequency (RF) signals. In August, 1996, the Federal Communications Commission (FCC) adopted RF exposure guidelines with safety levels for handheld wireless Tablet. Those guidelines are consistent with the safety standards previously set by both U.S. and international standards bodies:

<ANSI C95.1> (1992) / <NCRP Report 86> (1986) / <ICNIRP> (1999)

Those standards were based on comprehensive and periodic evaluations of the relevant scientific literature. For example, over 120 scientists, engineers, and physicians from universities, government health agencies, and industry reviewed the available body of research to develop the ANSI Standard (C95.1). Nevertheless, we recommend that you use a hands-free kit with your Tablet (such as an earpiece or headset) to avoid potential exposure to RF energy. The design of your Tablet complies with the FCC guidelines (and those standards).

Use only the supplied or an approved replacement antenna. Unauthorized antennas, modifications, or attachments could damage the Tablet and may violate FCC regulations.

## **NORMAL POSITION:**

Hold the Tablet as you would any other Tablet with the antenna pointed up and over your shoulder.

### **RF Exposure Information:**

This product is compliance to FCC RF Exposure requirements and refers to FCC website <https://apps.fcc.gov/oetcf/eas/reports/GenericSearch.cfm> search for FCC ID: 2AM8GCHAMELEON to gain further information include SAR Values.

This device complies with part 15 of the FCC rules. Operation is subject to the following two conditions:

(1) this device may not cause harmful interference, and



(2) this device must accept any interference received, including interference that may cause undesired operation.

NOTE: The manufacturer is not responsible for any radio or TV interference caused by unauthorized modifications to this equipment. Such modifications could void the user's authority to operate the equipment.

NOTE: This equipment has been tested and found to comply with the limits for a Class B digital device, pursuant to part 15 of the FCC Rules. These limits are designed to provide reasonable protection against harmful interference in a residential installation. This equipment generates uses and can radiate radio frequency energy and, if not installed and used in accordance with the instructions, may cause harmful interference to radio communications. However, there is no guarantee that interference will not occur in a particular installation. If this equipment does cause harmful interference to radio or television reception, which can be determined by turning the equipment off and on, the user is encouraged to try to correct the interference by one or more of the following measures:

- Reorient or relocate the receiving antenna.
- Increase the separation between the equipment and receiver.
- Connect the equipment into an outlet on a circuit different from that to which the receiver is connected.
- Consult the dealer or an experienced radio/TV technician for help

Do not use the device with the environment which below minimum  $-10^{\circ}\text{C}$  or over maximum  $50^{\circ}\text{C}$ , the device may not work.

Changes or modifications to this unit not expressly approved by the party responsible for compliance could void the user's authority to operate the equipment.

Ad Hoc function is supported but not able to operate on non-US frequencies.