



HAC RF TEST REPORT

No. I18Z62006-SEM02

For

Wiko SAS

smart phone

Model name: W-U300

With

Hardware Version: V1.0

Software Version: W-U300-V01.28

FCC ID: 2AM86WU300AS

Results Summary: M Category = M3

Issued Date: 2019-1-21



Note:

The test results in this test report relate only to the devices specified in this report. This report shall not be reproduced except in full without the written approval of CTTL.

The report must not be used by the client to claim product certification, approval, or endorsement by NVLAP, NIST, or any agency of the U.S. Government.

Test Laboratory:

CTTL, Telecommunication Technology Labs, CAICT

No. 51, Xueyuan Road, Haidian District, Beijing, P. R. China 100191.

Tel:+86(0)10-62304633-2512, Fax:+86(0)10-62304633-2504



REPORT HISTORY

Report Number	Revision	Issue Date	Description
I18Z62006-SEM02	Rev.0	2018-12-17	Initial creation of test report
I18Z62006-SEM02	Rev.1	2019-1-21	Add the evaluation of OTT HAC

TABLE OF CONTENT

1 TEST LABORATORY	5
1.1 TESTING LOCATION	5
1.2 TESTING ENVIRONMENT.....	5
1.3 PROJECT DATA	5
1.4 SIGNATURE.....	5
2 CLIENT INFORMATION	6
2.1 APPLICANT INFORMATION	6
2.2 MANUFACTURER INFORMATION	6
3 EQUIPMENT UNDER TEST (EUT) AND ANCILLARY EQUIPMENT (AE)	7
3.1 ABOUT EUT	7
3.2 INTERNAL IDENTIFICATION OF EUT USED DURING THE TEST	7
3.3 INTERNAL IDENTIFICATION OF AE USED DURING THE TEST	7
3.4 AIR INTERFACES / BANDS INDICATING OPERATING MODES	7
4 CONDUCTED OUTPUT POWER MEASUREMENT	8
5 REFERENCE DOCUMENTS.....	10
5.1 REFERENCE DOCUMENTS FOR TESTING	10
6 OPERATIONAL CONDITIONS DURING TEST	11
6.1 HAC MEASUREMENT SET-UP.....	11
6.2 PROBE SPECIFICATION	12
6.3 TEST ARCH PHANTOM & PHONE POSITIONER	13
6.4 ROBOTIC SYSTEM SPECIFICATIONS	13
7 EUT ARRANGEMENT	14
7.1 WD RF EMISSION MEASUREMENTS REFERENCE AND PLANE	14
8 SYSTEM VALIDATION	15
8.1 VALIDATION PROCEDURE	15
8.2 VALIDATION RESULT	15
9 EVALUATION OF MIF	16
9.1 INTRODUCTION.....	16
9.2 MIF MEASUREMENT WITH THE AIA	17
9.3 TEST EQUIPMENT FOR THE MIF MEASUREMENT	17
9.4 TEST SIGNAL VALIDATION	17
9.5 DUT MIF RESULTS.....	18
10 EVALUATION FOR LOW-POWER EXEMPTION	22
10.1 PRODUCT TESTING THRESHOLD	22
10.2 CONDUCTED POWER	22
10.3 CONCLUSION	23



11 RF TEST PROCEDURES.....	24
12 MEASUREMENT RESULTS (E-FIELD).....	25
13 ANSIC 63.19-2011 LIMITS	26
14 MEASUREMENT UNCERTAINTY	27
15 MAIN TEST INSTRUMENTS.....	28
16 CONCLUSION	28
ANNEX A TEST LAYOUT	29
ANNEX B TEST PLOTS	30
ANNEX C SYSTEM VALIDATION RESULT.....	75
ANNEX D PROBE CALIBRATION CERTIFICATE	78
ANNEX E DIPOLE CALIBRATION CERTIFICATE.....	88

1 Test Laboratory

1.1 Testing Location

CompanyName:	CTTL(Shouxiang)
Address:	No. 51 Shouxiang Science Building, Xueyuan Road, Haidian District, Beijing, P. R. China100191

1.2 Testing Environment

Temperature:	18°C~25°C,
Relative humidity:	30%~ 70%
Ground system resistance:	< 0.5 Ω
Ambient noise is checked and found very low and in compliance with requirement of standards. Reflection of surrounding objects is minimized and in compliance with requirement of standards.	

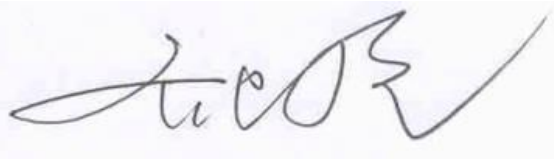
1.3 Project Data

Project Leader:	Qi Dianyuan
Test Engineer:	Lin Hao
Testing Start Date:	December 1, 2018
Testing End Date:	January 18, 2019

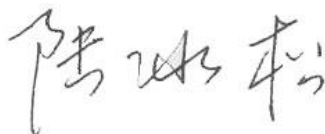
1.4 Signature



Lin Xiaojun
(Prepared this test report)



Qi Dianyuan
(Reviewed this test report)



Lu Bingsong
Deputy Director of the laboratory
(Approved this test report)

2 Client Information

2.1 Applicant Information

Company Name:	Wiko SAS
Address /Post:	1, rue Capitaine Dessemond 13007 - Marseille - France.
Contact:	Laurent Dahan
Email:	ldahan@wikomobile.com
Telephone:	33488089515
Fax:	33488089520

2.2 Manufacturer Information

Company Name:	Shenzhen Tinno Mobile Technology Corp.
Address /Post:	4/F, H-3 Building, OCT Eastern industrial Park, No.1 XiangShan East Road.,Nan Shan District, Shenzhen, P.R. China
Contact:	Jingwen.Guo
Email:	jingwen.guo@tinno.com
Telephone:	0755-86095550
Fax:	0755-86095551

3 Equipment Under Test (EUT) and Ancillary Equipment (AE)

3.1 About EUT

Description:	smart phone
Model name:	W-U300
Operating mode(s):	GSM850/1900, WCDMA850/1700/1900, CDMA BC0/1/10, BT, Wi-Fi LTE Band 2/4/5/12/13/25/26/41/71,

3.2 Internal Identification of EUT used during the test

EUT ID*	IMEI	HW Version	SW Version
EUT1	352798100010589	V1.0	W-U300-V01.28
EUT2	352798100013401	V1.0	W-U300-V01.28
EUT3	352798100012817	V1.0	W-U300-V01.28

*EUT ID: is used to identify the test sample in the lab internally.

Note: It is performed to test HAC with the EUT1&2 and conducted power with the EUT3.

3.3 Internal Identification of AE used during the test

AE ID*	Description	Model	SN	Manufacturer
AE1	Battery	C210AEBATT	/	Ningbo Veken Battery Co., Ltd

*AE ID: is used to identify the test sample in the lab internally.

3.4 Air Interfaces / Bands Indicating Operating Modes

Air-interface	Band(MHz)	Type	C63.19/tested	Simultaneous Transmissions	OTT
GSM	850	VO	Yes	BT, WLAN	NA
	1900				
	EDGE	DT	Yes		Google duo
WCDMA (UMTS)	850	VO	Yes	BT, WLAN	NA
	1700				
	1900				
	HSPA	DT	Yes		Google duo
CDMA	BC 0/1/10	VO	Yes	BT, WLAN	NA
	EVDO	DT	Yes		Google duo
LTE	Band 41	V/D	Yes	BT, WLAN	Google duo
LTE	Band 2/4/5/12/13/25/26/71	V/D	Yes	BT, WLAN	Google duo
BT	2450	DT	NA	GSM, WCDMA, CDMA, LTE	NA
WLAN	2450	V/D	Yes	GSM, WCDMA, CDMA, LTE	Google duo

VO: Voice CMRS/PSTN Service Only V/D: Voice CMRS/PSTN and Data Service DT: Digital Transport

* HAC Rating was not based on concurrent voice and data modes, Non current mode was found to represent worst case rating for both M and T rating

Note1 = No Associated T-Coil measurement has been made in accordance with 285076 D02 T-Coil testing for CMRS IP



4 CONDUCTED OUTPUT POWER MEASUREMENT

GSM 850MHz	Conducted Power (dBm)		
	Channel 251(848.8MHz)	Channel 190(836.6MHz)	Channel 128(824.2MHz)
Voice	32.62	32.66	32.65
EDGE	27.07	27.04	27.00
GSM 1900MHz	Conducted Power(dBm)		
	Channel 810(1909.8MHz)	Channel 661(1880MHz)	Channel 512(1850.2MHz)
Voice	29.76	29.61	29.40
EDGE	25.78	25.88	25.74
WCDMA 850MHz	Conducted Power (dBm)		
	Channel 4233(846.6MHz)	Channel 4182(836.4MHz)	Channel 4132(826.4MHz)
RMC	23.17	23.10	23.15
HSPA	22.21	22.19	22.16
WCDMA 1700MHz	Conducted Power (dBm)		
	Channel 1513 (1752.6MHz)	Channel 1412 (1732.4MHz)	Channel 1312 (1712.4MHz)
RMC	22.95	22.91	22.98
HSPA	21.97	21.95	21.92
WCDMA 1900MHz	Conducted Power (dBm)		
	Channel 9538(1907.6MHz)	Channel 9400(1880MHz)	Channel 9262(1852.4MHz)
RMC	22.91	22.83	22.78
HSPA	21.93	21.83	21.71
CDMA BC0	Conducted Power (dBm)		
	Channel 777 (848.31MHz)	Channel 384 (836.52MHz)	Channel 1013 (824.7MHz)
1x RTT	23.37	23.42	23.31
EVDO	23.71	23.75	23.53
CDMA BC1	Conducted Power (dBm)		
	Channel 1175 (1908.75MHz)	Channel 600 (1880MHz)	Channel 25 (1851.25MHz)
1x RTT	23.91	23.88	23.85
EVDO	23.92	23.95	23.97
CDMA BC10	Conducted Power (dBm)		
	Channel 684 (832.1MHz)	Channel 580 (820.5MHz)	Channel 476(817.9MHz)
1x RTT	23.86	23.82	23.85
EVDO	23.87	23.83	23.78



LTE Band2	Conducted Power (dBm)		
	Channel 19100(1900MHz)	Channel18900(1880MHz)	Channel 18700(1860MHz)
QPSK	23.09	23.06	22.99
16QAM	21.93	21.96	21.98
64QAM	20.61	20.58	20.52
LTE Band4	Conducted Power (dBm)		
	Channel 20300(1745MHz)	Channel20175(1732.5MHz)	Channel 20050(1720MHz)
QPSK	22.76	22.77	22.82
16QAM	22.16	22.14	22.35
64QAM	21.05	21.36	21.15
LTE Band5	Conducted Power (dBm)		
	Channel 20600(844MHz)	Channel 20525(836.5MHz)	Channel20450(829MHz)
QPSK	22.90	22.86	22.86
16QAM	22.12	21.83	21.74
64QAM	20.76	20.87	20.79
LTE Band12	Conducted Power (dBm)		
	Channel 23130(711MHz)	Channel 23095(707.5MHz)	Channel23060(704MHz)
QPSK	22.91	22.91	22.85
16QAM	21.88	22.26	21.92
64QAM	20.72	20.85	20.73
LTE Band13	Conducted Power (dBm)		
	Channel 23230(782MHz)		
QPSK	22.86		
16QAM	21.78		
64QAM	20.43		
LTE Band25	Conducted Power (dBm)		
	Channel 26590(1905MHz)	Channel 26365(1883MHz)	Channel 26140(1860MHz)
QPSK	23.14	23.10	22.98
16QAM	22.47	22.46	22.40
64QAM	20.85	20.70	20.81
LTE Band26	Conducted Power (dBm)		
	Channel 26965(841.5MHz)	Channel 26865(831.5MHz)	Channel 26775(822.5MHz)
QPSK	23.09	23.05	22.98
16QAM	22.28	22.30	21.88
64QAM	20.68	20.65	20.82

LTE Band41 Power Class 2	Conducted Power (dBm)		
	Channel 41490(2680MHz)	Channel 40620(2593MHz)	Channel 39750(2506MHz)
QPSK	26.17	26.15	26.34
16QAM	25.41	25.28	25.42
64QAM	23.19	23.16	23.19
LTE Band41 Power Class 3	Conducted Power (dBm)		
	Channel 41490(2680MHz)	Channel 40620(2593MHz)	Channel 39750(2506MHz)
QPSK	23.21	23.09	23.29
16QAM	22.48	22.44	22.49
64QAM	20.19	20.28	20.29
LTE Band71 QPSK	Conducted Power (dBm)		
	Channel 133372(688MHz)	Channel 133297(680.5MHz)	Channel 133222(673MHz)
QPSK	22.98	22.85	23.01
16QAM	22.25	22.51	22.17
64QAM	21.34	21.47	21.40
2.4GHz 802.11b 5.5M	Conducted Power (dBm)		
	Channel 11 (2462MHz)	Channel 6 (2437MHz)	Channel 1 (2412MHz)
	19.55	19.74	19.64

Note: For LTE Band 41, UL-DL Configuration 1 was used to evaluate Power Class 2 and UL-DL Configuration 0 was used to evaluate Power Class 3.

5 Reference Documents

5.1 Reference Documents for testing

The following document listed in this section is referred for testing.

Reference	Title	Version
ANSI C63.19-2011	American National Standard for Methods of Measurement of Compatibility between Wireless Communication Devices and Hearing Aids	2011 Edition
FCC 47 CFR §20.19	Hearing Aid Compatible Mobile Headsets	2015 Edition
KDB 285076 D01	Equipment Authorization Guidance for Hearing Aid Compatibility	v05

6 OPERATIONAL CONDITIONS DURING TEST

6.1 HAC MEASUREMENT SET-UP

These measurements are performed using the DASY5 NEO automated dosimetric assessment system. It is made by Schmid & Partner Engineering AG (SPEAG) in Zurich, Switzerland. It consists of high precision robotics system (Stäubli), robot controller, Intel Core2 computer, near-field probe, probe alignment sensor. The robot is a six-axis industrial robot performing precise movements. A cell controller system contains the power supply, robot controller, teach pendant (Joystick), and remote control, is used to drive the robot motors. The PC consists of the HP Intel Core2 1.86 GHz computer with Windows XP system and HAC Measurement Software DASY5 NEO, A/D interface card, monitor, mouse, and keyboard. The Stäubli Robot is connected to the cell controller to allow software manipulation of the robot. A data acquisition electronic (DAE) circuit performs the signal amplification, signal multiplexing, AD-conversion, offset measurements, mechanical surface detection, collision detection, etc. is connected to the Electro-optical coupler (EOC). The EOC performs the conversion from the optical into digital electric signal of the DAE and transfers data to the PC plug-in card.

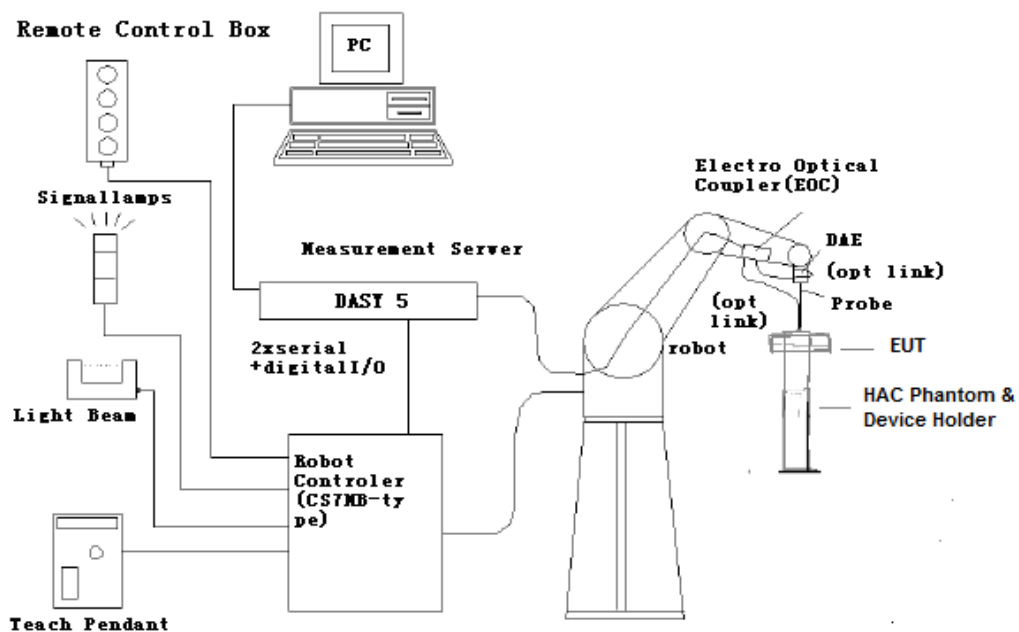


Fig. 1 HAC Test Measurement Set-up

The DAE4 consists of a highly sensitive electrometer-grade preamplifier with auto-zeroing, a channel and gain-switching multiplexer, a fast 16 bit AD-converter and a command decoder and control logic unit. Transmission to the PC-card is accomplished through an optical downlink for data and status information and an optical uplink for commands and clock lines. The mechanical probe mounting device includes two different sensor systems for frontal and sidewise probe contacts. They are also used for mechanical surface detection and probe collision detection. The robot uses its own controller with a built in VME-bus computer.

6.2 Probe Specification

E-Field Probe Description

Construction	One dipole parallel, two dipoles normal to probe axis Built-in shielding against static charges PEEK enclosure material
Calibration	In air from 100 MHz to 3.0 GHz (absolute accuracy $\pm 6.0\%$, k=2)
Frequency	40 MHz to > 6 GHz (can be extended to < 20 MHz) Linearity: ± 0.2 dB (100 MHz to 3 GHz)
Directivity	± 0.2 dB in air (rotation around probe axis) ± 0.4 dB in air (rotation normal to probe axis)
Dynamic Range	2 V/m to > 1000 V/m; Linearity: ± 0.2 dB
Dimensions	Overall length: 330 mm (Tip: 16 mm) Tip diameter: 8 mm (Body: 12 mm) Distance from probe tip to dipole centers: 2.5 mm
Application	General near-field measurements up to 6 GHz Field component measurements Fast automatic scanning in phantoms



[ER3DV6]

6.3 Test Arch Phantom & Phone Positioner

The Test Arch phantom should be positioned horizontally on a stable surface. Reference markings on the Phantom allow the complete setup of all predefined phantom positions and measurement grids by manually teaching three points in the robot. It enables easy and well defined positioning of the phone and validation dipoles as well as simple teaching of the robot (Dimensions: 370 x 370 x 370 mm).

The Phone Positioner supports accurate and reliable positioning of any phone with effect on near field $< \pm 0.5$ dB.

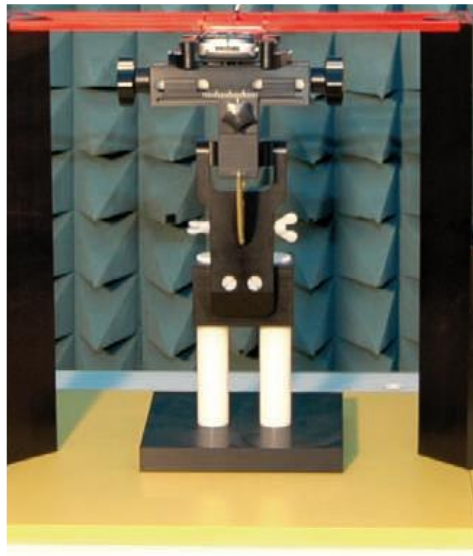


Fig. 2 HAC Phantom & Device Holder

6.4 Robotic System Specifications

Specifications

Positioner: Stäubli Unimation Corp. Robot Model: RX160L

Repeatability: ± 0.02 mm

No. of Axis: 6

Data Acquisition Electronic (DAE) System

Cell Controller

Processor: Intel Core2

Clock Speed: 1.86GHz

Operating System: Windows XP

Data Converter

Features: Signal Amplifier, multiplexer, A/D converter, and control logic

Software: DASY5 software

Connecting Lines: Optical downlink for data and status info.

Optical uplink for commands and clock

7 EUT ARRANGEMENT

7.1 WD RF Emission Measurements Reference and Plane

Figure 4 illustrates the references and reference plane that shall be used in the WD emissions measurement.

- The grid is 5 cm by 5 cm area that is divided into 9 evenly sized blocks or sub-grids.
- The grid is centered on the audio frequency output transducer of the WD (speaker or T-coil).
- The grid is located by reference to a reference plane. This reference plane is the planar area that contains the highest point in the area of the WD that normally rests against the user's ear
- The measurement plane is located parallel to the reference plane and 15 mm from it, out from the phone. The grid is located in the measurement plane.

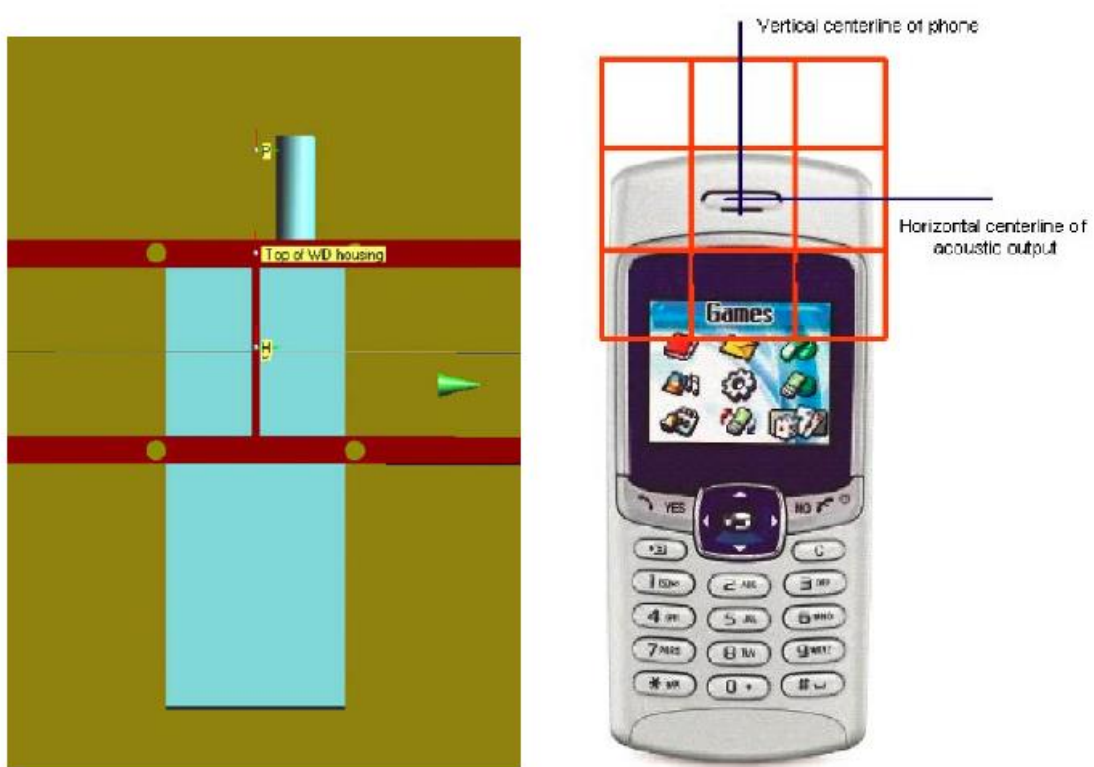


Fig. 3 WD reference and plane for RF emission measurements

8 SYSTEM VALIDATION

8.1 Validation Procedure

Place a dipole antenna meeting the requirements given in ANSI C63.19 in the position normally occupied by the WD. The dipole antenna serves as a known source for an electrical output. Position the E-field probes so that:

- The probes and their cables are parallel to the coaxial feed of the dipole antenna
- The probe cables and the coaxial feed of the dipole antenna approach the measurement area from opposite directions
- The center point of the probe element(s) are 15 mm from the closest surface of the dipole elements.

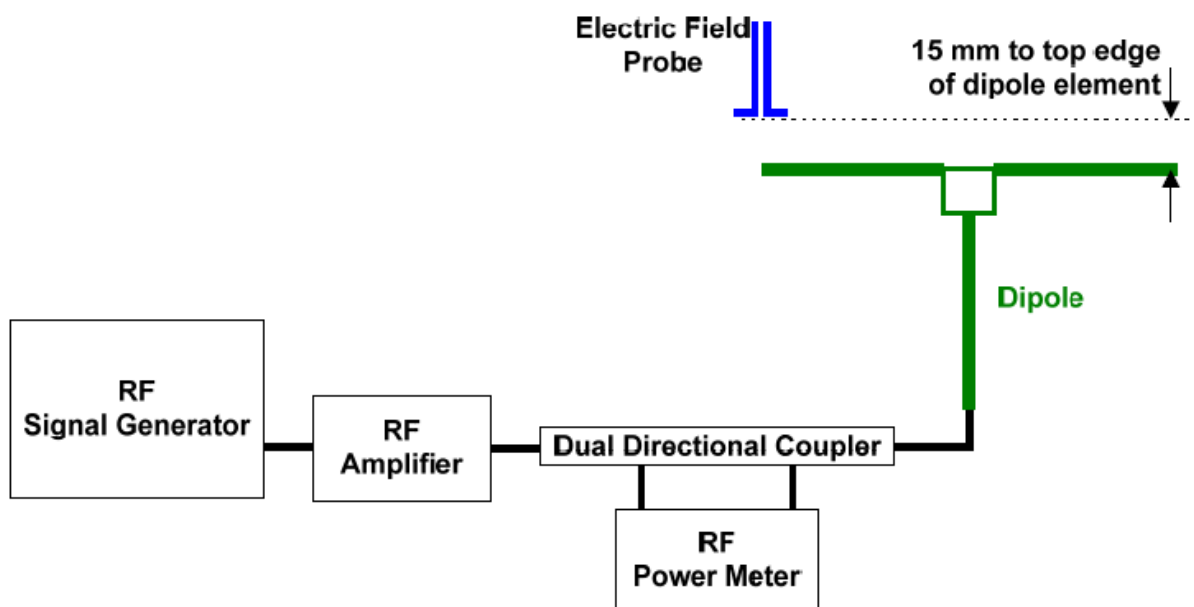


Fig. 4 Dipole Validation Setup

8.2 Validation Result

E-Field Scan						
Mode	Frequency (MHz)	Input Power (mW)	Measured ¹ Value(dBV/m)	Target ² Value(dBV/m)	Deviation ³ (%)	Limit ⁴ (%)
CW	835	100	40.75	40.91	-1.83	±25
CW	1880	100	39.22	39.01	2.45	±25
CW	2600	100	38.84	38.72	1.39	±25

Notes:

1. Please refer to the attachment for detailed measurement data and plot.
2. Target value is provided by SPEAD in the calibration certificate of specific dipoles.
3. Deviation (%) = 100 * (Measured value minus Target value) divided by Target value.
4. ANSI C63.19 requires values within ± 25% are acceptable, of which 12% is deviation and 13% is measurement uncertainty. Values independently validated for the dipole actually used in the measurements should be used, when available.

9 Evaluation of MIF

9.1 Introduction

The MIF (Modulation Interference Factor) is used to classify E-field emission to determine Hearing Aid Compatibility (HAC). It scales the power-averaged signal to the RF audio interference level and is characteristic to a modulation scheme. The HAC standard preferred "indirect" measurement method is based on average field measurement with separate scaling by the MIF. With an Audio Interference Analyzer (AIA) designed by SPEAG specifically for the MIF measurement, these values have been verified by practical measurements on an RF signal modulated with each of the waveforms. The resulting deviations from the simulated values are within the requirements of the HAC standard.

The AIA (Audio Interference Analyzer) is a USB powered electronic sensor to evaluate signals in the frequency range 698MHz - 6 GHz. It contains RMS detector and audio frequency circuits for sampling of the RF envelope.

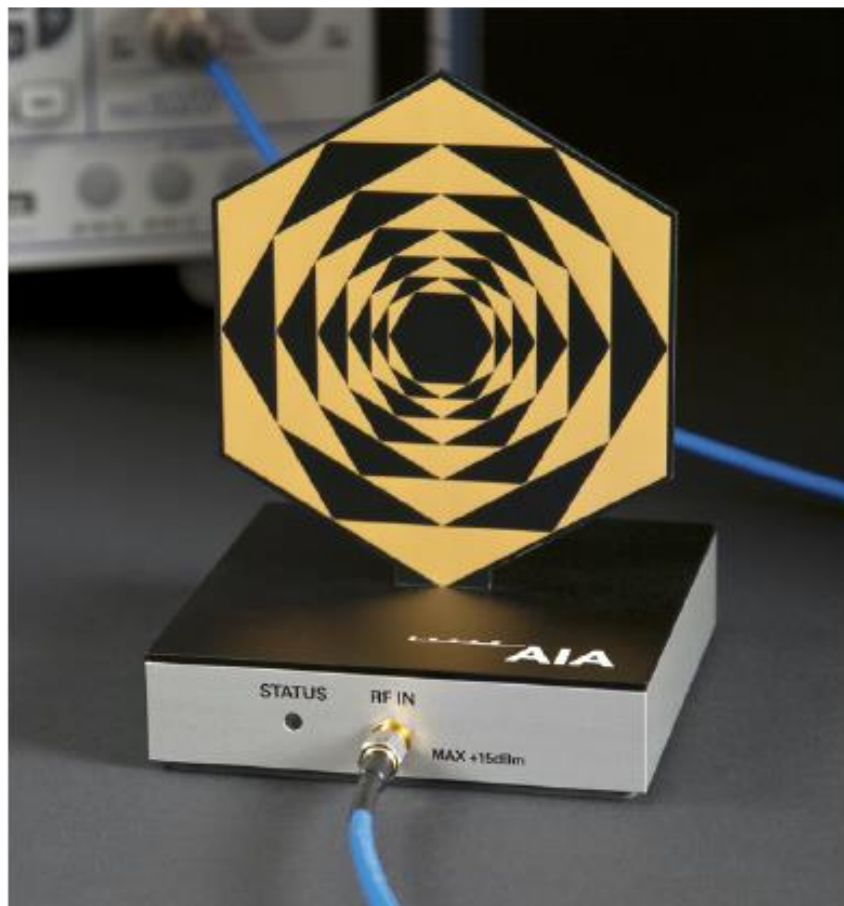


Fig. 5 AIA Front View

9.2 MIF measurement with the AIA

The MIF is measured with the AIA as follows:

1. Connect the AIA via USB to the DASY5 PC and verify the configuration settings.
2. Couple the RF signal to be evaluated to an AIA via cable or antenna.
3. Generate a MIF measurement job for the unknown signal and select the measurement port and timing settings.
4. Document the results via the post processor in a report.

9.3 Test equipment for the MIF measurement

No.	Name	Type	Serial Number	Manufacturer
01	Signal Generator	E4438C	MY49071430	Agilent
02	AIA	SE UMS 170 CB	1029	SPEAG
03	BTS	E5515C	MY50263375	Agilent

9.4 Test signal validation

The signal generator (E4438C) is used to generate a 1GHz signal with different modulation in the below table based on the ANSI C63.19-2011. The measured MIF with AIA are compared with the target values given in ANSI C63.19-2011 table D.3, D.4 and D5.

Pulse modulation	Target MIF	Measured MIF	Deviation
0.5ms pulse, 1000Hz repetition rate	-0.9 dB	-0.9 dB	0 dB
1ms pulse, 100Hz repetition rate	+3.9 dB	+3.7 dB	0.2 dB
0.1ms pulse, 100Hz repetition rate	+10.1 dB	+10.0 dB	0.1 dB
10ms pulse, 10Hz repetition rate	+1.6 dB	+1.7 dB	0.1 dB
Sine-wave modulation	Target MIF	Measured MIF	Deviation
1 kHz, 80% AM	-1.2 dB	-1.3 dB	0.1 dB
1 kHz, 10% AM	-9.1 dB	-9.0 dB	0.1 dB
1 kHz, 1% AM	-19.1 dB	-18.9 dB	0.2 dB
100 Hz, 10% AM	-16.1 dB	-16.0 dB	0.1 dB
10 kHz, 10% AM	-21.5 dB	-21.6 dB	0.1 dB
Transmission protocol	Target MIF	Measured MIF	Deviation
GSM; full-rate version 2; speech codec/handset low	+3.5 dB	+3.47 dB	0.03 dB
WCDMA; speech; speech codec low; AMR 12.2 kb/s	-20.0 dB	-19.8 dB	0.2 dB
CDMA; speech; SO3; RC3; full frame rate; 8kEVRC	-19.0 dB	-19.1 dB	0.1 dB
CDMA; speech; SO3; RC1; 1/8 th frame rate; 8kEVRC	+3.3 dB	+3.44 dB	0.14 dB

9.5 DUT MIF results

Transmission protocol		Modulation interference factor
GSM; full-rate version 2; speech codec/handset low		+3.5 dB
WCDMA; speech; speech codec low; AMR 12.2 kb/s		-20.0 dB
LTE-FDD (SC-FDMA, 1RB, 20MHz, QPSK)		-15.63 dB
LTE-FDD (SC-FDMA, 1RB, 20MHz, 16QAM)		-9.76 dB
LTE-FDD (SC-FDMA, 1RB, 20MHz, 64QAM)		-9.93 dB
LTE-TDD (SC-FDMA, 1RB, 20MHz, QPSK)		-1.62 dB
LTE-TDD (SC-FDMA, 1RB, 20MHz, 16QAM)		-1.44 dB
LTE-TDD (SC-FDMA, 1RB, 20MHz, 64QAM)		-1.54 dB
CDMA; speech; SO3; RC1; 1/8 th frame rate; 8kEVRC		+3.3 dB

Measured MIF for GSM							
Band		GSM 850			GSM 1900		
Channel		251	190	128	810	661	512
Mode	Voice	3.48	3.53	3.53	3.51	3.52	3.52
	EDGE	-2.09	-2.08	-2.14	1.03	1.05	1.06

Measured MIF for WCDMA										
Band		WCDMA 850			WCDMA 1700			WCDMA 1900		
Channel		4233	4182	4132	1513	1412	1312	9538	9400	9262
Mode	RMC	-22.65	-22.58	-23.05	-24.00	-23.24	-23.31	-22.41	-22.99	-21.65
	HSPA	-20.01	-20.14	-20.22	-19.28	-19.19	-19.22	-20.18	-20.11	-19.99

Measured MIF for CDMA										
Band		CDMA BC0			CDMA BC1			CDMA BC10		
Channel		777	384	1013	1175	600	25	684	580	476
Mode	1x RTT	2.86	2.88	2.67	3.00	2.86	2.72	3.05	2.92	3.01
	EVDO	-20.08	-20.21	-20.29	-19.32	-19.26	-19.19	-20.21	-20.16	-20.05

Measured MIF levels			
Band	Channel	Mode	MIF
LTE Band2	19100	QPSK	-13.93
	18900	QPSK	-14.22
	18700	QPSK	-14.34
	19100	16QAM	-10.54
	18900	16QAM	-10.03
	18700	16QAM	-10.51
	19100	64QAM	-10.54
	18900	64QAM	-10.57
	18700	64QAM	-10.04
LTE Band4	20300	QPSK	-14.70
	20175	QPSK	-13.73
	20050	QPSK	-14.89
	20300	16QAM	-9.97
	20175	16QAM	-10.41
	20050	16QAM	-10.66
	20300	64QAM	-10.34
	20175	64QAM	-9.96
	20050	64QAM	-10.64
LTE Band5	20600	QPSK	-14.32
	20525	QPSK	-14.41
	20450	QPSK	-14.07
	20600	16QAM	-10.43
	20525	16QAM	-10.13
	20450	16QAM	-10.15
	20600	64QAM	-10.16
	20525	64QAM	-10.17
	20450	64QAM	-10.08
LTE Band12	23130	QPSK	-15.13
	23095	QPSK	-14.75
	23060	QPSK	-14.55
	23130	16QAM	-9.64
	23095	16QAM	-10.16
	23060	16QAM	-10.00
	23130	64QAM	-10.03
	23095	64QAM	-10.18
	23060	64QAM	-9.65
LTE Band13 QPSK	23230	QPSK	-14.54
	23230	16QAM	-10.53
	23230	64QAM	-9.63



LTE Band25	26590	QPSK	-13.69
	26365	QPSK	-13.85
	26140	QPSK	-14.35
	26590	16QAM	-10.76
	26365	16QAM	-9.99
	26140	16QAM	-10.52
	26590	64QAM	-10.53
	26365	64QAM	-9.64
	26140	64QAM	-10.20
LTE Band26	26965	QPSK	-14.41
	26865	QPSK	-14.47
	26775	QPSK	-15.29
	26965	16QAM	-10.92
	26865	16QAM	-10.66
	26775	16QAM	-10.24
	26965	64QAM	-10.77
	26865	64QAM	-10.11
	26775	64QAM	-10.49
LTE Band71	133372	QPSK	-14.02
	133297	QPSK	-14.81
	133222	QPSK	-14.49
	133372	16QAM	-10.74
	133297	16QAM	-10.85
	133222	16QAM	-10.78
	133372	64QAM	-10.00
	133297	64QAM	-10.24
	133222	64QAM	-10.75
LTE Band41 Power Class 2	41490	QPSK	-1.68
	41055	QPSK	-1.70
	40620	QPSK	-1.68
	40185	QPSK	-1.70
	39750	QPSK	-1.70
	41490	16QAM	-1.69
	41055	16QAM	-1.47
	40620	16QAM	-1.56
	40185	16QAM	-1.47
	39750	16QAM	-1.55
	41490	64QAM	-1.70
	41055	64QAM	-1.58
	40620	64QAM	-1.49
	40185	64QAM	-1.68
	39750	64QAM	-1.55



LTE Band41 Power Class 3	41490	QPSK	-1.18
	41055	QPSK	-1.10
	40620	QPSK	-1.30
	40185	QPSK	-1.22
	39750	QPSK	-1.07
	41490	16QAM	-1.79
	41055	16QAM	-1.64
	40620	16QAM	-1.75
	40185	16QAM	-1.81
	39750	16QAM	-1.61
	41490	64QAM	-1.64
	41055	64QAM	-1.58
	40620	64QAM	-1.35
	40185	64QAM	-1.38
	39750	64QAM	-1.54

Note: For LTE Band 41, UL-DL Configuration 1 was used to evaluate Power Class 2 and UL-DL Configuration 0 was used to evaluate Power Class 3.

Measured MIF for WLAN				
Band	Mode	Rate	Channel	MIF
2.4GHz	802.11b	5.5Mbps	11	-9.89
			6	-10.02
			1	-10.27

10 Evaluation for low-power exemption

10.1 Product testing threshold

There are two methods for exempting an RF air interface technology from testing. The first method requires evaluation of the MIF for the worst-case operating mode. An RF air interface technology of a device is exempt from testing when its average antenna input power plus its MIF is ≤ 17 dBm for any of its operating modes. The second method does not require determination of the MIF. The RF emissions testing exemption shall be applied to an RF air interface technology in a device whose peak antenna input power, averaged over intervals $\leq 50 \mu s$, is ≤ 23 dBm. An RF air interface technology that is exempted from testing by either method shall be rated as M4.

The first method is used to be exempt from testing for the RF air interface technology in this report.

10.2 Conducted power

Band	Average power (dBm)	MIF (dB)	Sum (dBm)	C63.19 Tested
GSM 850 - Voice	32.66	3.53	36.19	Yes
GSM 850 - EDGE	27.07	-2.08	24.99	Yes*
GSM 1900 - Voice	29.76	3.52	33.28	Yes
GSM 1900 - EDGE	25.88	1.06	24.82	Yes*
WCDMA 850 - RMC	23.17	-22.58	0.59	No
WCDMA 850 - HSPA	22.21	-20.01	2.2	No
WCDMA 1700 - RMC	22.98	-23.24	-0.26	No
WCDMA 1700 - HSPA	21.97	-19.19	2.78	No
WCDMA 1900 - RMC	22.91	-21.65	1.26	No
WCDMA 1900 - HSPA	21.93	-19.99	1.94	No
CDMA BC0 – 1x RTT	23.42	2.88	26.3	Yes
CDMA BC0 – EVDO	23.75	-20.08	3.67	No
CDMA BC1– 1x RTT	23.91	3.00	26.91	Yes
CDMA BC1 – EVDO	23.97	-19.19	4.78	No
CDMA BC10 – 1x RTT	23.86	3.05	26.91	Yes
CDMA BC10 – EVDO	23.87	-20.05	3.82	No
LTE Band 2 QPSK	23.09	-13.93	9.16	No
LTE Band 4 QPSK	22.82	-13.73	9.09	No
LTE Band 5 QPSK	22.9	-14.07	8.83	No
LTE Band 12 QPSK	22.91	-14.55	8.36	No
LTE Band 13 QPSK	22.86	-14.54	8.32	No
LTE Band 25 QPSK	23.14	-13.69	9.45	No
LTE Band 26 QPSK	23.09	-14.41	8.68	No
LTE Band 41 QPSK Power Class 2	26.34	-1.68	24.66	Yes
LTE Band 41 QPSK Power Class 3	23.29	-1.07	22.22	Yes

LTE Band 71 QPSK	23.01	-14.02	8.99	No
LTE Band 2 16QAM	21.98	-10.03	11.95	No
LTE Band 4 16QAM	22.35	-9.97	12.38	No
LTE Band 5 16QAM	22.12	-10.13	11.99	No
LTE Band 12 16QAM	22.26	-9.64	12.62	No
LTE Band 13 16QAM	21.78	-10.53	11.25	No
LTE Band 25 16QAM	22.47	-9.99	12.48	No
LTE Band 26 16QAM	22.3	-10.24	12.06	No
LTE Band 41 16QAM Power Class 2	25.42	-1.47	23.95	Yes
LTE Band 41 16QAM Power Class 3	22.49	-1.61	20.88	Yes
LTE Band 71 16QAM	22.51	-10.74	11.77	No
LTE Band 2 64QAM	20.61	-10.04	10.57	No
LTE Band 4 64QAM	21.36	-9.96	11.4	No
LTE Band 5 64QAM	20.87	-10.08	10.79	No
LTE Band 12 64QAM	20.85	-9.65	11.2	No
LTE Band 13 64QAM	20.43	-9.63	10.8	No
LTE Band 25 64QAM	20.85	-9.64	11.21	No
LTE Band 26 64QAM	20.82	-10.11	10.71	No
LTE Band 41 64QAM Power Class 2	23.19	-1.49	21.7	Yes
LTE Band 41 64QAM Power Class 3	20.29	-1.35	18.94	Yes
LTE Band 71 64QAM	21.47	-10	11.47	No
WiFi-2.4G	19.74	-9.89	9.85	No

*Note: For GSM bands, EDGE modes were not evaluated as Voice modes were found to be the worst-case modes for the GSM air interface.

10.3 Conclusion

According to the above table, the sums of average power and MIF for WCDMA, LTE FDD and WiFi are less than 17dBm. So it is measured for GSM, CDMA and LTE TDD bands. The WCDMA, LTE FDD and WiFi are exempt from testing and rated as M4.



11 RF TEST PROCEDURES

The evaluation was performed with the following procedure:

- 1) Confirm proper operation of the field probe, probe measurement system and other instrumentation and the positioning system.
- 2) Position the WD in its intended test position. The gauge block can simplify this positioning.
- 3) Configure the WD normal operation for maximum rated RF output power, at the desired channel and other operating parameters (e.g., test mode), as intended for the test.
- 4) The center sub-grid shall be centered on the center of the T-Coil mode axial measurement point or the acoustic output, as appropriate. Locate the field probe at the initial test position in the 50 mm by 50 mm grid, which is contained in the measurement plane. If the field alignment method is used, align the probe for maximum field reception.
- 5) Record the reading.
- 6) Scan the entire 50 mm by 50 mm region in equally spaced increments and record the reading at each measurement point. The distance between measurement points shall be sufficient to assure the identification of the maximum reading.
- 7) Identify the five contiguous sub-grids around the center sub-grid whose maximum reading is the lowest of all available choices. This eliminates the three sub-grids with the maximum readings. Thus, the six areas to be used to determine the WD's highest emissions are identified.
- 8) Identify the maximum field reading within the non-excluded sub-grids identified in Step 7)
- 9) Evaluate the MIF and add to the maximum steady-state rms field-strength reading to obtain the RF audio interference level..
- 10) Compare this RF audio interference level with the categories and record the resulting WD category rating.

12 Measurement Results (E-Field)

Frequency		Measured Value(dBV/m)	Power Drift (dB)	Category
MHz	Channel			
GSM 850				
848.8	251	35.68	0.00	M4 (see Fig B.1)
836.6	190	37.06	-0.01	M4 (see Fig B.2)
824.2	128	37.41	-0.05	M4 (see Fig B.3)
GSM 1900				
1909.8	810	31.32	-0.18	M3 (see Fig B.4)
1880	661	31.09	-0.01	M3 (see Fig B.5)
1850.2	512	31.69	0.05	M3 (see Fig B.6)
CDMA BC0				
848.31	777	29.98	-0.01	M4 (see Fig B.7)
836.52	384	30.30	0.03	M4 (see Fig B.8)
824.7	1013	27.09	-0.08	M4 (see Fig B.9)
CDMA BC1				
1908.75	1175	24.80	0.13	M4 (see Fig B.10)
1880	600	24.86	0.02	M4 (see Fig B.11)
1851.25	25	24.44	-0.12	M4 (see Fig B.12)
CDMA BC10				
832.1	684	25.88	0.11	M4 (see Fig B.13)
820.5	580	22.51	0.05	M4 (see Fig B.14)
817.9	476	23.37	0.02	M4 (see Fig B.15)
LTE Band 41 QPSK Power Class 2				
2680	41490	29.47	-0.02	M4 (see Fig B.16)
2636.5	41055	29.92	-0.07	M4 (see Fig B.17)
2593	40620	28.55	-0.08	M4 (see Fig B.18)
2549.5	40185	29.92	-0.07	M4 (see Fig B.19)
2506	39750	25.76	-0.02	M4 (see Fig B.20)
LTE Band 41 16QAM Power Class 2				
2680	41490	28.66	-0.01	M4 (see Fig B.21)
2636.5	41055	29.03	0.04	M4 (see Fig B.22)
2593	40620	27.41	-0.00	M4 (see Fig B.23)
2549.5	40185	25.86	0.01	M4 (see Fig B.24)
2506	39750	25.02	0.04	M4 (see Fig B.25)
LTE Band 41 64QAM Power Class 2				
2680	41490	28.66	0.01	M4 (see Fig B.26)
2636.5	41055	29.01	-0.02	M4 (see Fig B.27)
2593	40620	27.56	-0.03	M4 (see Fig B.28)
2549.5	40185	25.69	0.05	M4 (see Fig B.29)
2506	39750	24.94	-0.04	M4 (see Fig B.30)

LTE Band 41 QPSK Power Class 3				
2680	41490	28.70	0.05	M4 (see Fig B.31)
2636.5	41055	28.78	0.04	M4 (see Fig B.32)
2593	40620	27.41	-0.02	M4 (see Fig B.33)
2549.5	40185	25.41	-0.04	M4 (see Fig B.34)
2506	39750	24.52	0.01	M4 (see Fig B.35)
LTE Band 41 16QAM Power Class 3				
2680	41490	27.51	-0.04	M4 (see Fig B.36)
2636.5	41055	27.99	-0.02	M4 (see Fig B.37)
2593	40620	26.21	0.00	M4 (see Fig B.38)
2549.5	40185	23.90	-0.11	M4 (see Fig B.39)
2506	39750	22.93	-0.02	M4 (see Fig B.40)
LTE Band 41 64QAM Power Class 3				
2680	41490	27.71	-0.04	M4 (see Fig B.41)
2636.5	41055	27.89	0.02	M4 (see Fig B.42)
2593	40620	26.78	-0.00	M4 (see Fig B.43)
2549.5	40185	24.49	-0.06	M4 (see Fig B.44)
2506	39750	22.87	0.06	M4 (see Fig B.45)

Note: For LTE Band 41, UL-DL Configuration 1 was used to evaluate Power Class 2 and UL-DL Configuration 0 was used to evaluate Power Class 3.

13 ANSIC 63.19-2011 LIMITS

WD RF audio interference level categories in logarithmic units

Emission categories	< 960 MHz	E-field emissions
Category M1	50 to 55	dB (V/m)
Category M2	45 to 50	dB (V/m)
Category M3	40 to 45	dB (V/m)
Category M4	< 40	dB (V/m)
Emission categories	> 960 MHz	E-field emissions
Category M1	40 to 45	dB (V/m)
Category M2	35 to 40	dB (V/m)
Category M3	30 to 35	dB (V/m)
Category M4	< 30	dB (V/m)

14 MEASUREMENT UNCERTAINTY

No.	Error source	Type	Uncertainty Value(%)	Prob. Dist.	k	c _i E	Standard Uncertainty (%) u_i (%)E	Degree of freedom V_{eff} or ν_i
Measurement System								
1	Probe Calibration	B	5.	N	1	1	5.1	∞
2	Axial Isotropy	B	4.7	R	$\sqrt{3}$	1	2.7	∞
3	Sensor Displacement	B	16.5	R	$\sqrt{3}$	1	9.5	∞
4	Boundary Effects	B	2.4	R	$\sqrt{3}$	1	1.4	∞
5	Linearity	B	4.7	R	$\sqrt{3}$	1	2.7	∞
6	Scaling to Peak Envelope Power	B	2.0	R	$\sqrt{3}$	1	1.2	∞
7	System Detection Limit	B	1.0	R	$\sqrt{3}$	1	0.6	∞
8	Readout Electronics	B	0.3	N	1	1	0.3	∞
9	Response Time	B	0.8	R	$\sqrt{3}$	1	0.5	∞
10	Integration Time	B	2.6	R	$\sqrt{3}$	1	1.5	∞
11	RF Ambient Conditions	B	3.0	R	$\sqrt{3}$	1	1.7	∞
12	RF Reflections	B	12.0	R	$\sqrt{3}$	1	6.9	∞
13	Probe Positioner	B	1.2	R	$\sqrt{3}$	1	0.7	∞
14	Probe Positioning	A	4.7	R	$\sqrt{3}$	1	2.7	∞
15	Extra. And Interpolation	B	1.0	R	$\sqrt{3}$	1	0.6	∞
Test Sample Related								
16	Device Positioning Vertical	B	4.7	R	$\sqrt{3}$	1	2.7	∞
17	Device Positioning Lateral	B	1.0	R	$\sqrt{3}$	1	0.6	∞
18	Device Holder and Phantom	B	2.4	R	$\sqrt{3}$	1	1.4	∞
19	Power Drift	B	5.0	R	$\sqrt{3}$	1	2.9	∞

20	AIA measurement	B	12	R	$\sqrt{3}$	1	6.9	∞
Phantom and Setup related								
21	Phantom Thickness	B	2.4	R	$\sqrt{3}$	1	1.4	∞
Combined standard uncertainty(%)							16.2	
Expanded uncertainty (confidence interval of 95 %)		$u_e = 2u_c$		N	k=2		32.4	

15 MAIN TEST INSTRUMENTS

Table 1: List of Main Instruments

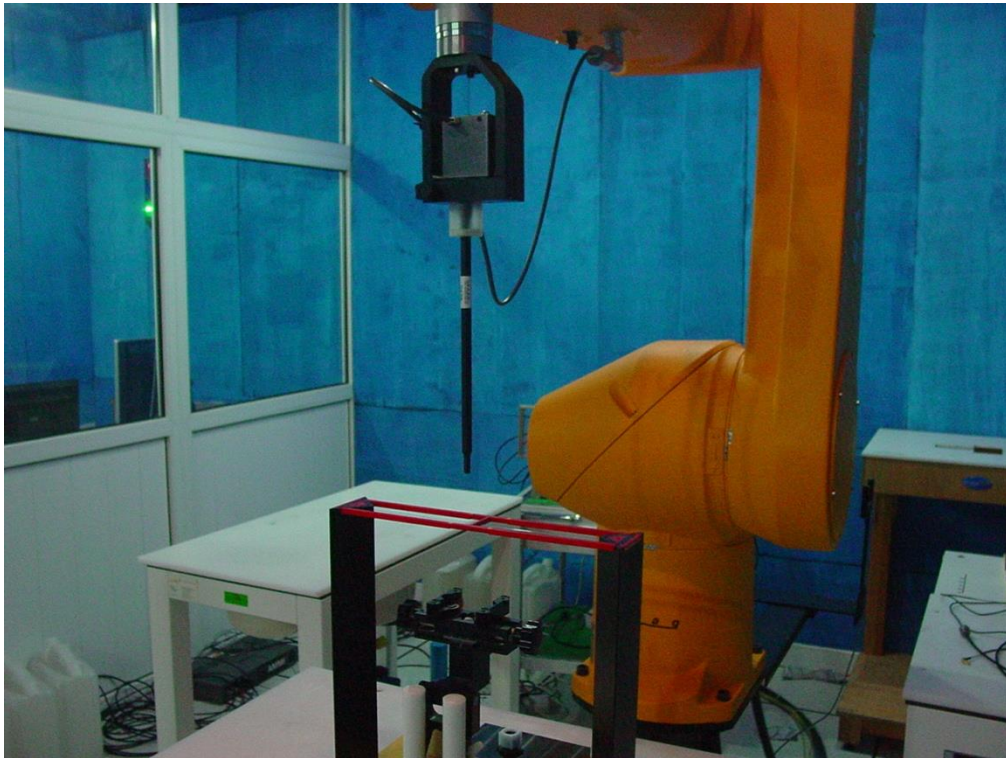
No.	Name	Type	Serial Number	Calibration Date	Valid Period
01	Signal Generator	E4438C	MY49071430	January 2, 2018	One Year
02	Signal Generator	E4438C	MY49070393	January 4, 2019	One Year
03	Power meter	NRVD	102196	March 7, 2018	One year
04	Power sensor	NRV-Z5	100596		
05	Amplifier	60S1G4	0331848	No Calibration Requested	
06	E-Field Probe	ER3DV6	2272	December 19, 2017	One year
07	E-Field Probe	EF3DV3	4060	June 12, 2018	One year
08	DAE	SPEAG DAE4	1555	August 20, 2018	One year
09	HAC Dipole	CD835V3	1023	August 28, 2018	One year
10	HAC Dipole	CD1880V3	1018	August 28, 2018	One year
11	HAC Dipole	CD2600V3	1017	August 22, 2018	One year
12	BTS	E5515C	MY50263375	January 23, 2018	One year
13	AIA	SE UMS 170 CB	1029	No Calibration Requested	

16 CONCLUSION

The HAC measurement indicates that the EUT complies with the HAC limits of the ANSIC63.19-2011. The total M-rating is **M3**.

END OF REPORT BODY

ANNEX A TEST LAYOUT



Picture A1:HAC RF System Layout

ANNEX B TEST PLOTS

HAC RF E-Field GSM 850 High

Date: 2018-12-1

Electronics: DAE4 Sn1555

Medium: Air

Medium parameters used: $\sigma = 0$ mho/m, $\epsilon_r = 1$; $\rho = 1000$ kg/m³

Ambient Temperature: 22.0°C

Communication System: GSM 850; Frequency: 848.8 MHz; Duty Cycle: 1:8.3

Probe: ER3DV6 - SN2272; ConvF(1, 1, 1)

E Scan - ER3DV6 - 2011: 15 mm from Probe Center to the Device/Hearing Aid Compatibility Test (101x101x1): Interpolated grid: dx=0.5000 mm, dy=0.5000 mm

Device Reference Point: 0, 0, -6.3 mm

Reference Value = 49.56 V/m; Power Drift = 0.00 dB

Applied MIF = 3.48 dB

RF audio interference level = 35.68 dBV/m

Emission category: M4

MIF scaled E-field

Grid 1 M4 34.17 dBV/m	Grid 2 M4 34.99 dBV/m	Grid 3 M4 34.93 dBV/m
Grid 4 M4 34.83 dBV/m	Grid 5 M4 35.68 dBV/m	Grid 6 M4 35.61 dBV/m
Grid 7 M4 35.23 dBV/m	Grid 8 M4 35.97 dBV/m	Grid 9 M4 35.83 dBV/m

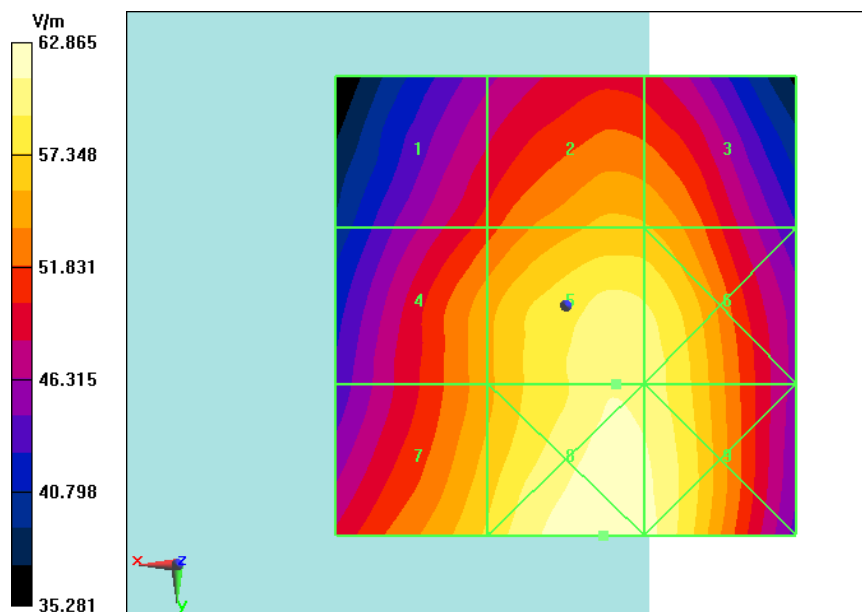


Fig B.1 HAC RF E-Field GSM 850 High

HAC RF E-Field GSM 850 Middle

Date: 2018-12-1

Electronics: DAE4 Sn1555

Medium: Air

Medium parameters used: $\sigma = 0$ mho/m, $\epsilon_r = 1$; $\rho = 1000$ kg/m³

Ambient Temperature: 22.0°C

Communication System: GSM 850; Frequency: 836.6 MHz; Duty Cycle: 1:8.3

Probe: ER3DV6 - SN2272;ConvF(1, 1, 1)

E Scan - ER3DV6 - 2011: 15 mm from Probe Center to the Device 2/Hearing Aid

Compatibility Test (101x101x1): Interpolated grid: dx=0.5000 mm, dy=0.5000 mm

Device Reference Point: 0, 0, -6.3 mm

Reference Value = 58.02 V/m; Power Drift = -0.01 dB

Applied MIF = 3.53 dB

RF audio interference level = 37.06 dBV/m

Emission category: M4

MIF scaled E-field

Grid 1 M4 35.64 dBV/m	Grid 2 M4 36.36 dBV/m	Grid 3 M4 36.24 dBV/m
Grid 4 M4 36.26 dBV/m	Grid 5 M4 37.06 dBV/m	Grid 6 M4 36.95 dBV/m
Grid 7 M4 36.71 dBV/m	Grid 8 M4 37.4 dBV/m	Grid 9 M4 37.23 dBV/m

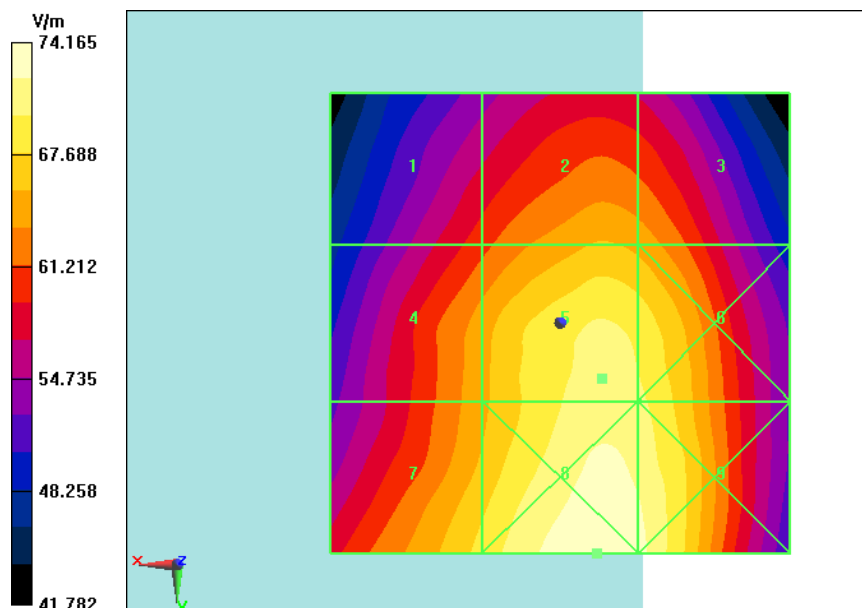


Fig B.2 HAC RF E-Field GSM 850 Middle

HAC RF E-Field GSM 850 Low

Date: 2018-12-1

Electronics: DAE4 Sn1555

Medium: Air

Medium parameters used: $\sigma = 0$ mho/m, $\epsilon_r = 1$; $\rho = 1000$ kg/m³

Ambient Temperature: 22.0°C

Communication System: GSM 850; Frequency: 824.2 MHz; Duty Cycle: 1:8.3

Probe: ER3DV6 - SN2272;ConvF(1, 1, 1)

E Scan - ER3DV6 - 2011: 15 mm from Probe Center to the Device 3/Hearing Aid

Compatibility Test (101x101x1): Interpolated grid: dx=0.5000 mm, dy=0.5000 mm

Device Reference Point: 0, 0, -6.3 mm

Reference Value = 62.99 V/m; Power Drift = -0.05 dB

Applied MIF = 3.53 dB

RF audio interference level = 37.41 dBV/m

Emission category: M4

MIF scaled E-field

Grid 1 M4 36.4 dBV/m	Grid 2 M4 36.68 dBV/m	Grid 3 M4 36.2 dBV/m
Grid 4 M4 37.12 dBV/m	Grid 5 M4 37.41 dBV/m	Grid 6 M4 37.03 dBV/m
Grid 7 M4 37.58 dBV/m	Grid 8 M4 37.9 dBV/m	Grid 9 M4 37.37 dBV/m

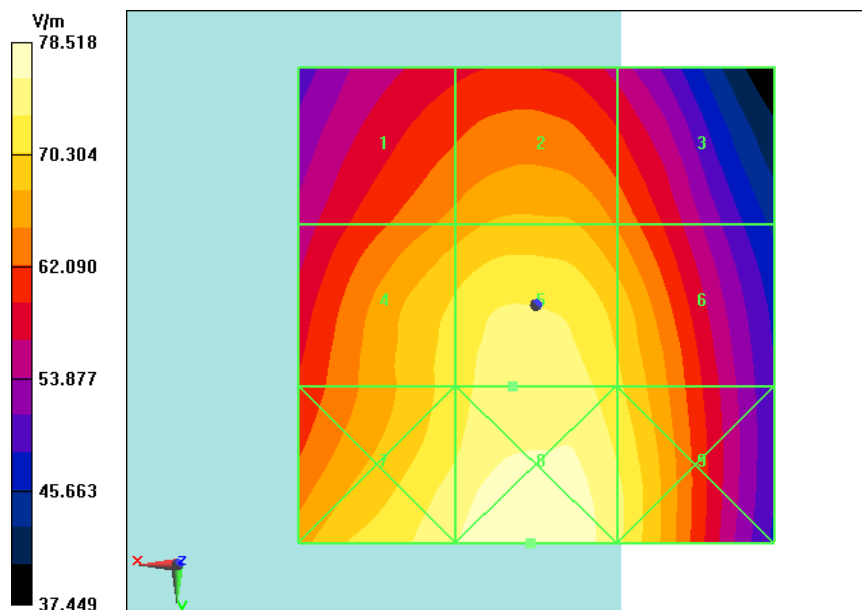


Fig B.3 HAC RF E-Field GSM 850 Low

HAC RF E-Field GSM 1900 High

Date: 2018-12-1

Electronics: DAE4 Sn1555

Medium: Air

Medium parameters used: $\sigma = 0$ mho/m, $\epsilon_r = 1$; $\rho = 1000$ kg/m³

Ambient Temperature: 22.0°C

Communication System: DCS 1900; Frequency: 1909.8 MHz; Duty Cycle: 1:8.3

Probe: ER3DV6 - SN2272;ConvF(1, 1, 1)

E Scan - ER3DV6 - 2011: 15 mm from Probe Center to the Device/Hearing Aid

Compatibility Test (101x101x1): Interpolated grid: dx=0.5000 mm, dy=0.5000 mm

Device Reference Point: 0, 0, -6.3 mm

Reference Value = 14.62 V/m; Power Drift = -0.18 dB

Applied MIF = 3.51 dB

RF audio interference level = 31.32 dBV/m

Emission category: M3

MIF scaled E-field

Grid 1 M3 32.68 dBV/m	Grid 2 M3 32.78 dBV/m	Grid 3 M3 31.77 dBV/m
Grid 4 M4 26.42 dBV/m	Grid 5 M4 27.72 dBV/m	Grid 6 M4 27.71 dBV/m
Grid 7 M3 30.85 dBV/m	Grid 8 M3 31.32 dBV/m	Grid 9 M3 30.52 dBV/m

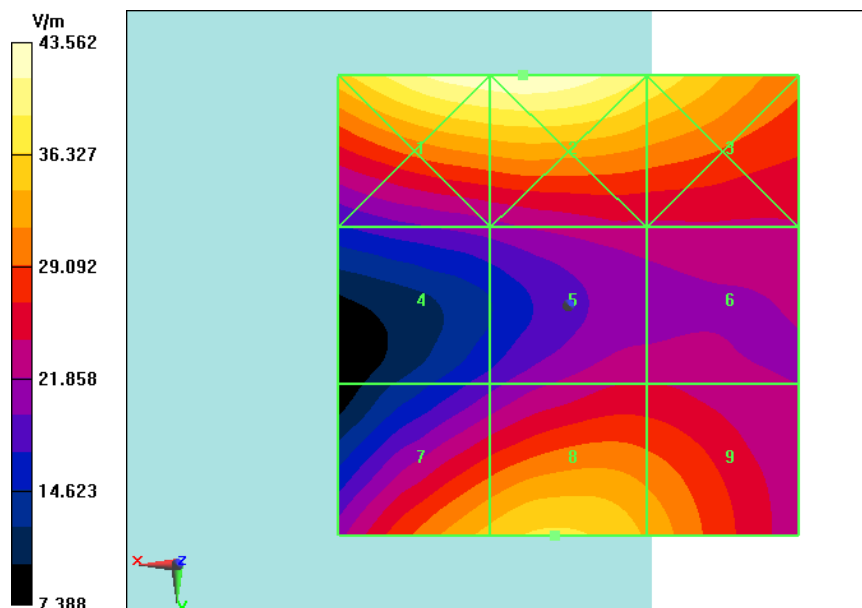


Fig B.4 HAC RF E-Field GSM 1900 High

HAC RF E-Field GSM 1900 Middle

Date: 2018-12-1

Electronics: DAE4 Sn1555

Medium: Air

Medium parameters used: $\sigma = 0$ mho/m, $\epsilon_r = 1$; $\rho = 1000$ kg/m³

Ambient Temperature: 22.0°C

Communication System: DCS 1900; Frequency: 1880 MHz; Duty Cycle: 1:8.3

Probe: ER3DV6 - SN2272;ConvF(1, 1, 1)

E Scan - ER3DV6 - 2011: 15 mm from Probe Center to the Device 2/Hearing Aid

Compatibility Test (101x101x1): Interpolated grid: dx=0.5000 mm, dy=0.5000 mm

Device Reference Point: 0, 0, -6.3 mm

Reference Value = 14.38 V/m; Power Drift = -0.01 dB

Applied MIF = 3.52 dB

RF audio interference level = 31.09 dBV/m

Emission category: M3

MIF scaled E-field

Grid 1 M3 32.69 dBV/m	Grid 2 M3 32.77 dBV/m	Grid 3 M3 31.81 dBV/m
Grid 4 M4 26.72 dBV/m	Grid 5 M4 27.5 dBV/m	Grid 6 M4 27.46 dBV/m
Grid 7 M3 30.7 dBV/m	Grid 8 M3 31.09 dBV/m	Grid 9 M3 30.12 dBV/m

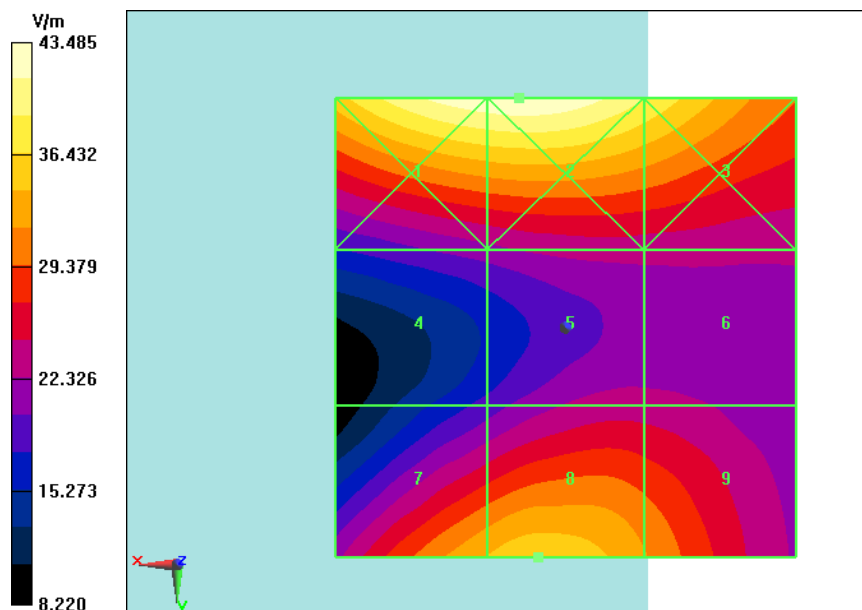


Fig B.5 HAC RF E-Field GSM 1900 Middle

HAC RF E-Field GSM 1900 Low

Date: 2018-12-1

Electronics: DAE4 Sn1555

Medium: Air

Medium parameters used: $\sigma = 0$ mho/m, $\epsilon_r = 1$; $\rho = 1000$ kg/m³

Ambient Temperature: 22.0°C

Communication System: DCS 1900; Frequency: 1850.2 MHz; Duty Cycle: 1:8.3

Probe: ER3DV6 - SN2272;ConvF(1, 1, 1)

E Scan - ER3DV6 - 2011: 15 mm from Probe Center to the Device 3/Hearing Aid

Compatibility Test (101x101x1): Interpolated grid: dx=0.5000 mm, dy=0.5000 mm

Device Reference Point: 0, 0, -6.3 mm

Reference Value = 15.17 V/m; Power Drift = 0.05 dB

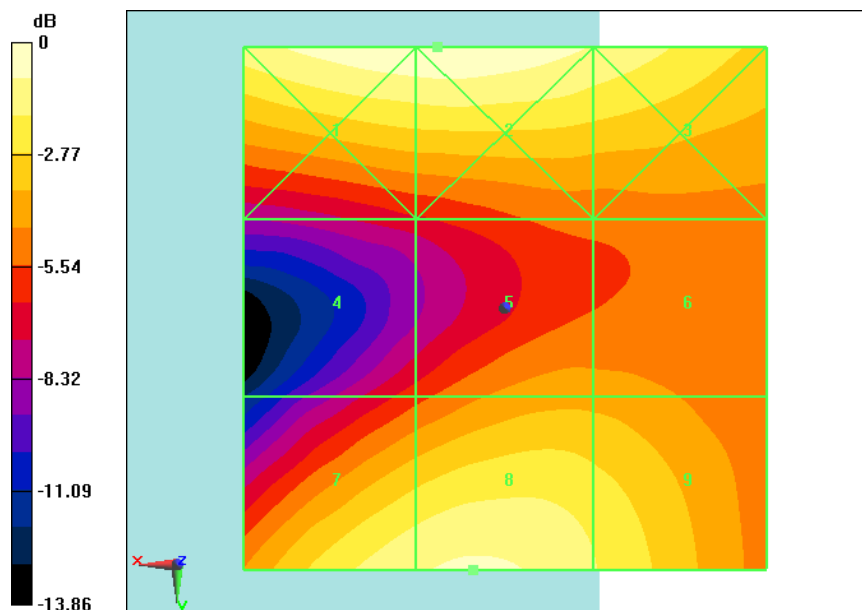
Applied MIF = 3.52 dB

RF audio interference level = 31.69 dBV/m

Emission category: M3

MIF scaled E-field

Grid 1 M3 32.41 dBV/m	Grid 2 M3 32.45 dBV/m	Grid 3 M3 31.48 dBV/m
Grid 4 M4 26.6 dBV/m	Grid 5 M4 28.5 dBV/m	Grid 6 M4 28.46 dBV/m
Grid 7 M3 31.39 dBV/m	Grid 8 M3 31.69 dBV/m	Grid 9 M3 30.66 dBV/m



0 dB = 41.91 V/m = 32.45 dBV/m

Fig B.6 HAC RF E-Field GSM 1900 Low

HAC RF E-Field CDMA BC0 High

Date: 2018-12-1

Electronics: DAE4 Sn1555

Medium: Air

Medium parameters used: $\sigma = 0$ mho/m, $\epsilon_r = 1$; $\rho = 1000$ kg/m³

Ambient Temperature: 22.0°C

Communication System: CDMA 835; Frequency: 848.31 MHz; Duty Cycle: 1:1

Probe: ER3DV6 - SN2272;ConvF(1, 1, 1)

E Scan - ER3DV6 - 2011: 15 mm from Probe Center to the Device/Hearing Aid

Compatibility Test (101x101x1): Interpolated grid: dx=0.5000 mm, dy=0.5000 mm

Device Reference Point: 0, 0, -6.3 mm

Reference Value = 28.12 V/m; Power Drift = -0.01 dB

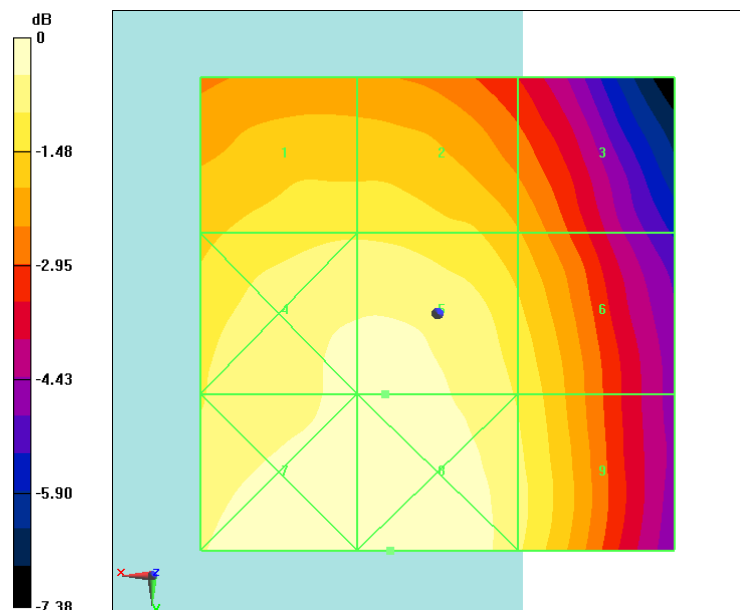
Applied MIF = 2.86 dB

RF audio interference level = 29.98 dBV/m

Emission category: M4

MIF scaled E-field

Grid 1 M4 29.28 dBV/m	Grid 2 M4 29.27 dBV/m	Grid 3 M4 28.39 dBV/m
Grid 4 M4 29.94 dBV/m	Grid 5 M4 29.98 dBV/m	Grid 6 M4 29.27 dBV/m
Grid 7 M4 30.24 dBV/m	Grid 8 M4 30.31 dBV/m	Grid 9 M4 29.5 dBV/m



0 dB = 32.77 V/m = 30.31 dBV/m

Fig B.7 HAC RF E-Field CDMA BC0 High

HAC RF E-Field CDMA BC0 Middle

Date: 2018-12-1

Electronics: DAE4 Sn1555

Medium: Air

Medium parameters used: $\sigma = 0$ mho/m, $\epsilon_r = 1$; $\rho = 1000$ kg/m³

Ambient Temperature: 22.0°C

Communication System: CDMA 835; Frequency: 836.52 MHz; Duty Cycle: 1:1

Probe: ER3DV6 - SN2272;ConvF(1, 1, 1)

E Scan - ER3DV6 - 2011: 15 mm from Probe Center to the Device 2/Hearing Aid Compatibility Test (101x101x1): Interpolated grid: dx=0.5000 mm, dy=0.5000 mm

Device Reference Point: 0, 0, -6.3 mm

Reference Value = 25.68 V/m; Power Drift = 0.03 dB

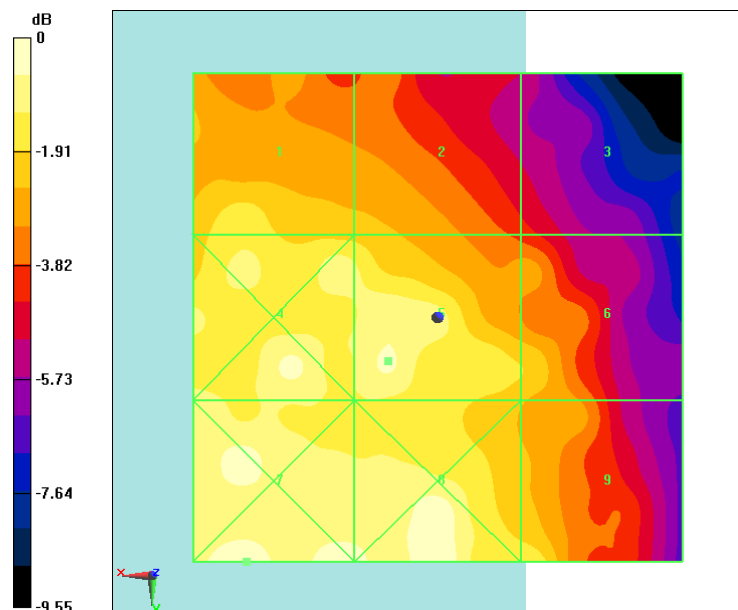
Applied MIF = 2.88 dB

RF audio interference level = 30.30 dBV/m

Emission category: M4

MIF scaled E-field

Grid 1 M4 29.49 dBV/m	Grid 2 M4 28.73 dBV/m	Grid 3 M4 26.81 dBV/m
Grid 4 M4 30.38 dBV/m	Grid 5 M4 30.3 dBV/m	Grid 6 M4 28.98 dBV/m
Grid 7 M4 30.85 dBV/m	Grid 8 M4 30.71 dBV/m	Grid 9 M4 29.5 dBV/m



0 dB = 34.88 V/m = 30.85 dBV/m

Fig B.8 HAC RF E-Field CDMA BC0 Middle

HAC RF E-Field CDMA BC0 Low

Date: 2018-12-1

Electronics: DAE4 Sn1555

Medium: Air

Medium parameters used: $\sigma = 0$ mho/m, $\epsilon_r = 1$; $\rho = 1000$ kg/m³

Ambient Temperature: 22.0°C

Communication System: CDMA 835; Frequency: 824.7 MHz; Duty Cycle: 1:1

Probe: ER3DV6 - SN2272;ConvF(1, 1, 1)

E Scan - ER3DV6 - 2011: 15 mm from Probe Center to the Device 3/Hearing Aid

Compatibility Test (101x101x1): Interpolated grid: dx=0.5000 mm, dy=0.5000 mm

Device Reference Point: 0, 0, -6.3 mm

Reference Value = 19.85 V/m; Power Drift = -0.08 dB

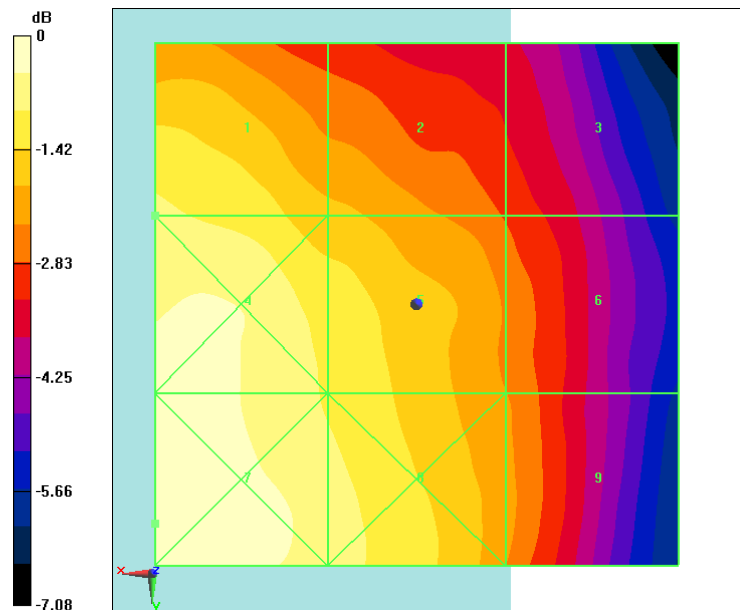
Applied MIF = 2.67 dB

RF audio interference level = 27.09 dBV/m

Emission category: M4

MIF scaled E-field

Grid 1 M4 27.09 dBV/m	Grid 2 M4 26.2 dBV/m	Grid 3 M4 25.06 dBV/m
Grid 4 M4 27.7 dBV/m	Grid 5 M4 26.94 dBV/m	Grid 6 M4 25.6 dBV/m
Grid 7 M4 27.93 dBV/m	Grid 8 M4 27.26 dBV/m	Grid 9 M4 25.76 dBV/m



0 dB = 24.92 V/m = 27.93 dBV/m

Fig B.9 HAC RF E-Field CDMA BC0 Low

HAC RF E-Field CDMA BC1 High

Date: 2018-12-1

Electronics: DAE4 Sn1555

Medium: Air

Medium parameters used: $\sigma = 0$ mho/m, $\epsilon_r = 1$; $\rho = 1000$ kg/m³

Ambient Temperature: 22.0°C

Communication System: CDMA 1900; Frequency: 1908.75 MHz; Duty Cycle: 1:1

Probe: ER3DV6 - SN2272;ConvF(1, 1, 1)

E Scan - ER3DV6 - 2011: 15 mm from Probe Center to the Device/Hearing Aid

Compatibility Test (101x101x1): Interpolated grid: dx=0.5000 mm, dy=0.5000 mm

Device Reference Point: 0, 0, -6.3 mm

Reference Value = 7.803 V/m; Power Drift = 0.13 dB

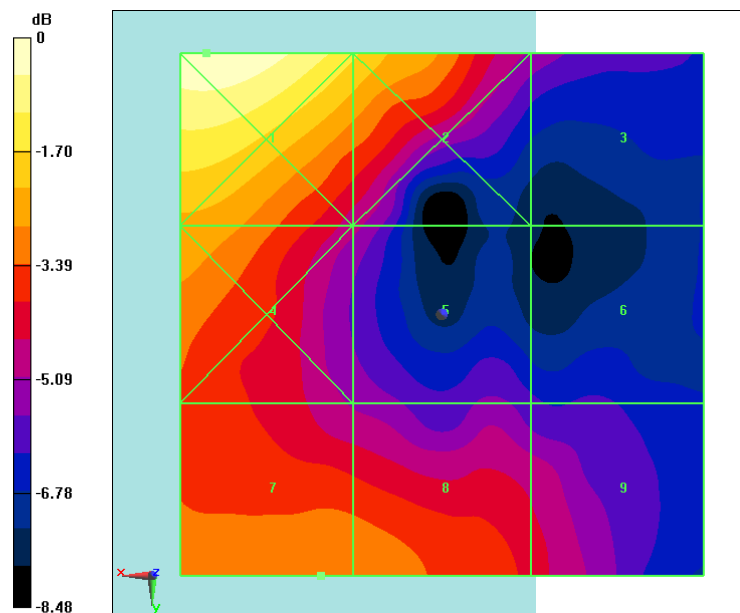
Applied MIF = 3.00 dB

RF audio interference level = 24.80 dBV/m

Emission category: M4

MIF scaled E-field

Grid 1 M4 27.66 dBV/m	Grid 2 M4 26.11 dBV/m	Grid 3 M4 22.51 dBV/m
Grid 4 M4 25.3 dBV/m	Grid 5 M4 22.82 dBV/m	Grid 6 M4 21.62 dBV/m
Grid 7 M4 24.8 dBV/m	Grid 8 M4 24.75 dBV/m	Grid 9 M4 23.47 dBV/m



0 dB = 24.15 V/m = 27.66 dBV/m

Fig B.10 HAC RF E-Field CDMA BC1 High

HAC RF E-Field CDMA BC1 Middle

Date: 2018-12-1

Electronics: DAE4 Sn1555

Medium: Air

Medium parameters used: $\sigma = 0$ mho/m, $\epsilon_r = 1$; $\rho = 1000$ kg/m³

Ambient Temperature: 22.0°C

Communication System: CDMA 1900; Frequency: 1880 MHz; Duty Cycle: 1:1

Probe: ER3DV6 - SN2272;ConvF(1, 1, 1)

E Scan - ER3DV6 - 2011: 15 mm from Probe Center to the Device 2/Hearing Aid

Compatibility Test (101x101x1): Interpolated grid: dx=0.5000 mm, dy=0.5000 mm

Device Reference Point: 0, 0, -6.3 mm

Reference Value = 7.073 V/m; Power Drift = 0.02 dB

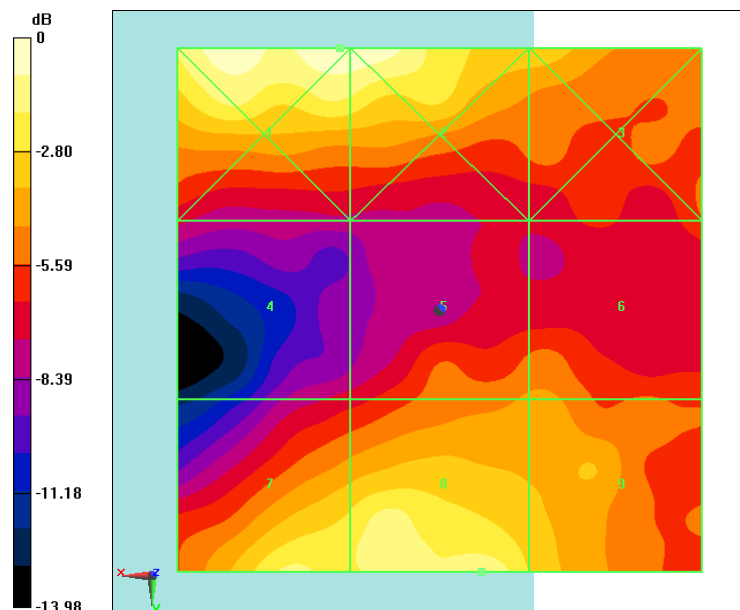
Applied MIF = 2.86 dB

RF audio interference level = 24.86 dBV/m

Emission category: M4

MIF scaled E-field

Grid 1 M4 26.11 dBV/m	Grid 2 M4 26.07 dBV/m	Grid 3 M4 23.31 dBV/m
Grid 4 M4 19.19 dBV/m	Grid 5 M4 21.67 dBV/m	Grid 6 M4 21.73 dBV/m
Grid 7 M4 24.53 dBV/m	Grid 8 M4 24.86 dBV/m	Grid 9 M4 23.31 dBV/m



0 dB = 20.21 V/m = 26.11 dBV/m

Fig B.11 HAC RF E-Field CDMA BC1 Middle

HAC RF E-Field CDMA BC1 Low

Date: 2018-12-1

Electronics: DAE4 Sn1555

Medium: Air

Medium parameters used: $\sigma = 0$ mho/m, $\epsilon_r = 1$; $\rho = 1000$ kg/m³

Ambient Temperature: 22.0°C

Communication System: CDMA 1900; Frequency: 1851.25 MHz; Duty Cycle: 1:1

Probe: ER3DV6 - SN2272;ConvF(1, 1, 1)

E Scan - ER3DV6 - 2011: 15 mm from Probe Center to the Device 3/Hearing Aid

Compatibility Test (101x101x1): Interpolated grid: dx=0.5000 mm, dy=0.5000 mm

Device Reference Point: 0, 0, -6.3 mm

Reference Value = 9.966 V/m; Power Drift = -0.12 dB

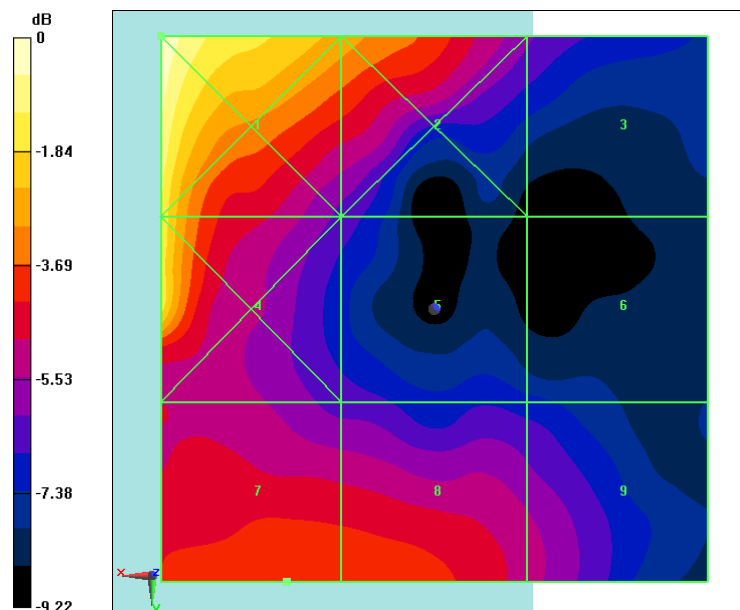
Applied MIF = 2.72 dB

RF audio interference level = 24.44 dBV/m

Emission category: M4

MIF scaled E-field

Grid 1 M4 28.13 dBV/m	Grid 2 M4 25.44 dBV/m	Grid 3 M4 22.14 dBV/m
Grid 4 M4 26.92 dBV/m	Grid 5 M4 21.82 dBV/m	Grid 6 M4 21.02 dBV/m
Grid 7 M4 24.44 dBV/m	Grid 8 M4 24.39 dBV/m	Grid 9 M4 22.93 dBV/m



0 dB = 25.50 V/m = 28.13 dBV/m

Fig B.12 HAC RF E-Field CDMA BC1 Low

HAC RF E-Field CDMA BC10 High

Date: 2018-12-1

Electronics: DAE4 Sn1555

Medium: Air

Medium parameters used: $\sigma = 0$ mho/m, $\epsilon_r = 1$; $\rho = 1000$ kg/m³

Ambient Temperature: 22.0°C

Communication System: CDMA 835; Frequency: 832.1 MHz; Duty Cycle: 1:1

Probe: ER3DV6 - SN2272;ConvF(1, 1, 1)

E Scan - ER3DV6 - 2011: 15 mm from Probe Center to the Device/Hearing Aid

Compatibility Test (101x101x1): Interpolated grid: dx=0.5000 mm, dy=0.5000 mm

Device Reference Point: 0, 0, -6.3 mm

Reference Value = 15.15 V/m; Power Drift = 0.11 dB

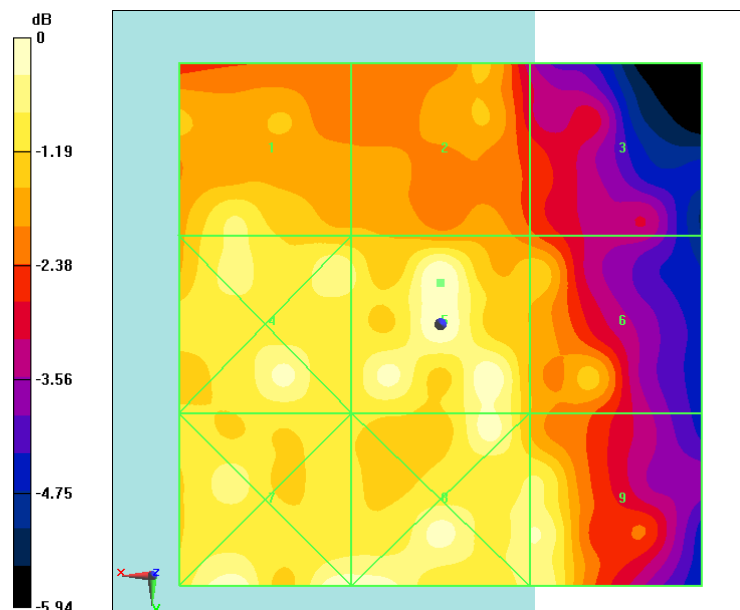
Applied MIF = 3.05 dB

RF audio interference level = 25.88 dBV/m

Emission category: M4

MIF scaled E-field

Grid 1 M4 25.18 dBV/m	Grid 2 M4 24.42 dBV/m	Grid 3 M4 23.64 dBV/m
Grid 4 M4 25.59 dBV/m	Grid 5 M4 25.88 dBV/m	Grid 6 M4 24.63 dBV/m
Grid 7 M4 25.78 dBV/m	Grid 8 M4 25.78 dBV/m	Grid 9 M4 25.53 dBV/m



0 dB = 19.67 V/m = 25.88 dBV/m

Fig B.13 HAC RF E-Field CDMA BC10 High

HAC RF E-Field CDMA BC10 Middle

Date: 2018-12-1

Electronics: DAE4 Sn1555

Medium: Air

Medium parameters used: $\sigma = 0$ mho/m, $\epsilon_r = 1$; $\rho = 1000$ kg/m³

Ambient Temperature: 22.0°C

Communication System: CDMA 835; Frequency: 820.5 MHz; Duty Cycle: 1:1

Probe: ER3DV6 - SN2272;ConvF(1, 1, 1)

E Scan - ER3DV6 - 2011: 15 mm from Probe Center to the Device 2/Hearing Aid

Compatibility Test (101x101x1): Interpolated grid: dx=0.5000 mm, dy=0.5000 mm

Device Reference Point: 0, 0, -6.3 mm

Reference Value = 10.36 V/m; Power Drift = 0.05 dB

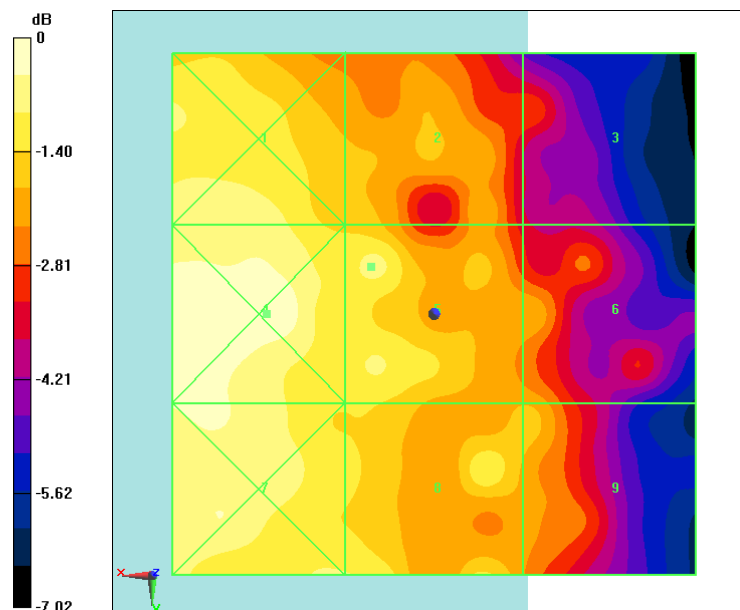
Applied MIF = 2.92 dB

RF audio interference level = 22.51 dBV/m

Emission category: M4

MIF scaled E-field

Grid 1 M4 22.69 dBV/m	Grid 2 M4 21.79 dBV/m	Grid 3 M4 20.43 dBV/m
Grid 4 M4 23.31 dBV/m	Grid 5 M4 22.51 dBV/m	Grid 6 M4 21.4 dBV/m
Grid 7 M4 22.92 dBV/m	Grid 8 M4 22.43 dBV/m	Grid 9 M4 21.67 dBV/m



0 dB = 14.64 V/m = 23.31 dBV/m

Fig B.14 HAC RF E-Field CDMA BC10 Middle

HAC RF E-Field CDMA BC10 Low

Date: 2018-12-1

Electronics: DAE4 Sn1555

Medium: Air

Medium parameters used: $\sigma = 0$ mho/m, $\epsilon_r = 1$; $\rho = 1000$ kg/m³

Ambient Temperature: 22.0°C

Communication System: CDMA 835; Frequency: 817.9 MHz; Duty Cycle: 1:1

Probe: ER3DV6 - SN2272;ConvF(1, 1, 1)

E Scan - ER3DV6 - 2011: 15 mm from Probe Center to the Device 3/Hearing Aid

Compatibility Test (101x101x1): Interpolated grid: dx=0.5000 mm, dy=0.5000 mm

Device Reference Point: 0, 0, -6.3 mm

Reference Value = 11.13 V/m; Power Drift = 0.02 dB

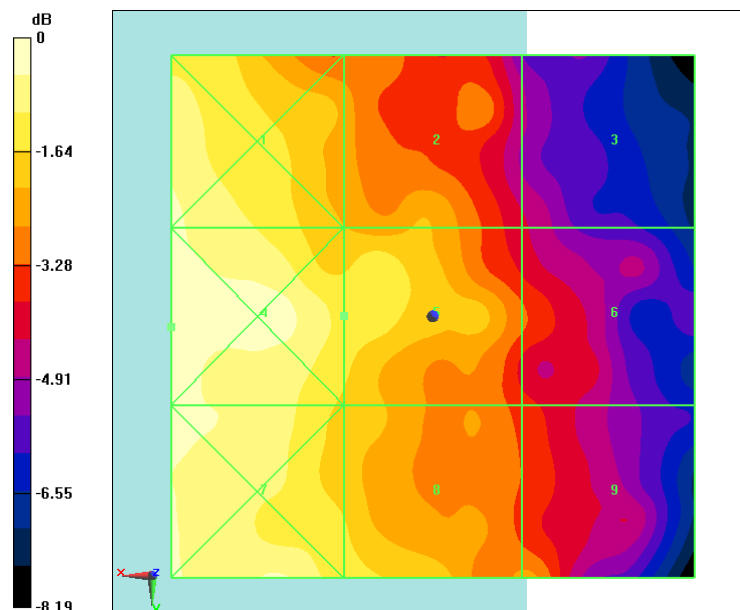
Applied MIF = 3.01 dB

RF audio interference level = 23.37 dBV/m

Emission category: M4

MIF scaled E-field

Grid 1 M4 24.18 dBV/m	Grid 2 M4 22.45 dBV/m	Grid 3 M4 20.34 dBV/m
Grid 4 M4 24.57 dBV/m	Grid 5 M4 23.37 dBV/m	Grid 6 M4 21.42 dBV/m
Grid 7 M4 24.22 dBV/m	Grid 8 M4 23.29 dBV/m	Grid 9 M4 22.06 dBV/m



0 dB = 16.92 V/m = 24.57 dBV/m

Fig B.15 HAC RF E-Field CDMA BC10 Low

HAC RF E-Field LTE Band41 QPSK CH41490

Date: 2018-12-1

Electronics: DAE4 Sn1555

Medium: Air

Medium parameters used: $\sigma = 0$ mho/m, $\epsilon_r = 1$; $\rho = 1000$ kg/m³

Ambient Temperature: 22.0°C

Communication System: LTE Band41; Frequency: 2680 MHz; Duty Cycle: 1:1.58

Probe: ER3DV6 - SN2272;ConvF(1, 1, 1)

E Scan - ER3DV6 - 2011: 15 mm from Probe Center to the Device/Hearing Aid Compatibility Test (101x101x1): Interpolated grid: dx=0.5000 mm, dy=0.5000 mm

Device Reference Point: 0, 0, -6.3 mm

Reference Value = 40.09 V/m; Power Drift = -0.02 dB

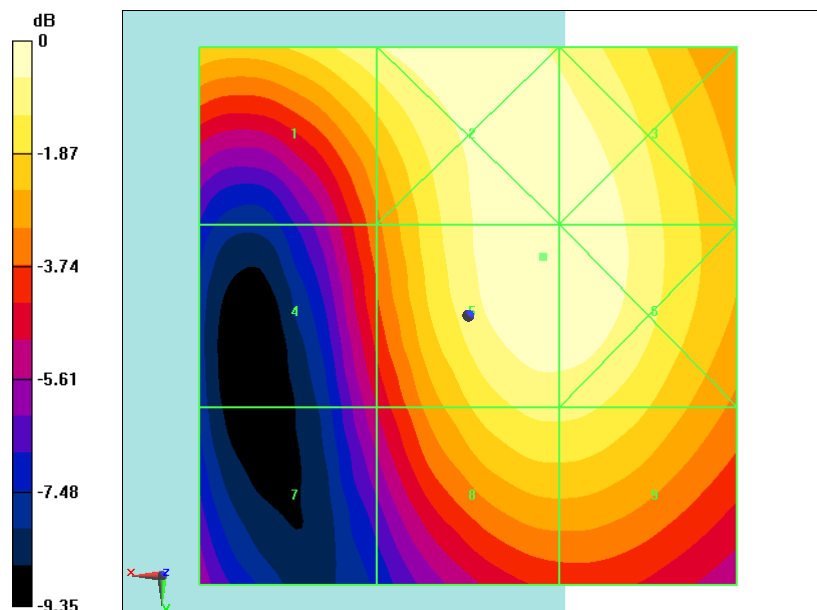
Applied MIF = -1.68 dB

RF audio interference level = 29.47 dBV/m

Emission category: M4

MIF scaled E-field

Grid 1 M4 28.78 dBV/m	Grid 2 M4 29.43 dBV/m	Grid 3 M4 29.4 dBV/m
Grid 4 M4 26.17 dBV/m	Grid 5 M4 29.47 dBV/m	Grid 6 M4 29.44 dBV/m
Grid 7 M4 24.51 dBV/m	Grid 8 M4 28.42 dBV/m	Grid 9 M4 28.42 dBV/m



0 dB = 29.74 V/m = 29.47 dBV/m

Fig B.16 HAC RF E-Field LTE Band41 QPSK CH41490

HAC RF E-Field LTE Band41 QPSK CH41055

Date: 2018-12-1

Electronics: DAE4 Sn1555

Medium: Air

Medium parameters used: $\sigma = 0$ mho/m, $\epsilon_r = 1$; $\rho = 1000$ kg/m³

Ambient Temperature: 22.0°C

Communication System: LTE Band41; Frequency: 2636.5 MHz; Duty Cycle: 1:1.58

Probe: ER3DV6 - SN2272;ConvF(1, 1, 1)

E Scan - ER3DV6 - 2011: 15 mm from Probe Center to the Device 2/Hearing Aid

Compatibility Test (101x101x1): Interpolated grid: dx=0.5000 mm, dy=0.5000 mm

Device Reference Point: 0, 0, -6.3 mm

Reference Value = 43.42 V/m; Power Drift = -0.07 dB

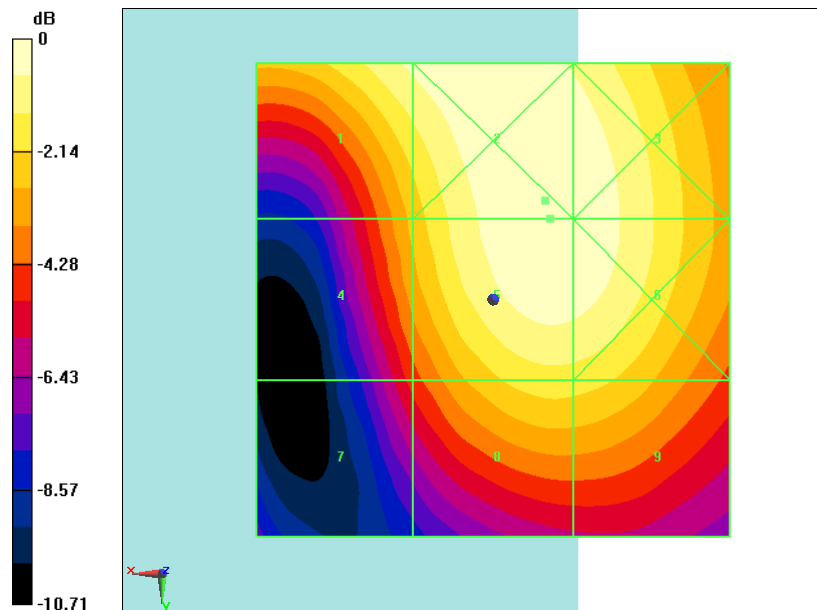
Applied MIF = -1.70 dB

RF audio interference level = 29.92 dBV/m

Emission category: M4

MIF scaled E-field

Grid 1 M4 29.41 dBV/m	Grid 2 M4 29.93 dBV/m	Grid 3 M4 29.81 dBV/m
Grid 4 M4 27.33 dBV/m	Grid 5 M4 29.92 dBV/m	Grid 6 M4 29.81 dBV/m
Grid 7 M4 25.29 dBV/m	Grid 8 M4 28.21 dBV/m	Grid 9 M4 28.15 dBV/m



0 dB = 31.37 V/m = 29.93 dBV/m

Fig B.17 HAC RF E-Field LTE Band41 QPSK CH41055

HAC RF E-Field LTE Band41 QPSK CH40620

Date: 2018-12-1

Electronics: DAE4 Sn1555

Medium: Air

Medium parameters used: $\sigma = 0$ mho/m, $\epsilon_r = 1$; $\rho = 1000$ kg/m³

Ambient Temperature: 22.0°C

Communication System: LTE Band41; Frequency: 2593 MHz; Duty Cycle: 1:1.58

Probe: ER3DV6 - SN2272;ConvF(1, 1, 1)

E Scan - ER3DV6 - 2011: 15 mm from Probe Center to the Device 3/Hearing Aid

Compatibility Test (101x101x1): Interpolated grid: dx=0.5000 mm, dy=0.5000 mm

Device Reference Point: 0, 0, -6.3 mm

Reference Value = 37.04 V/m; Power Drift = -0.08 dB

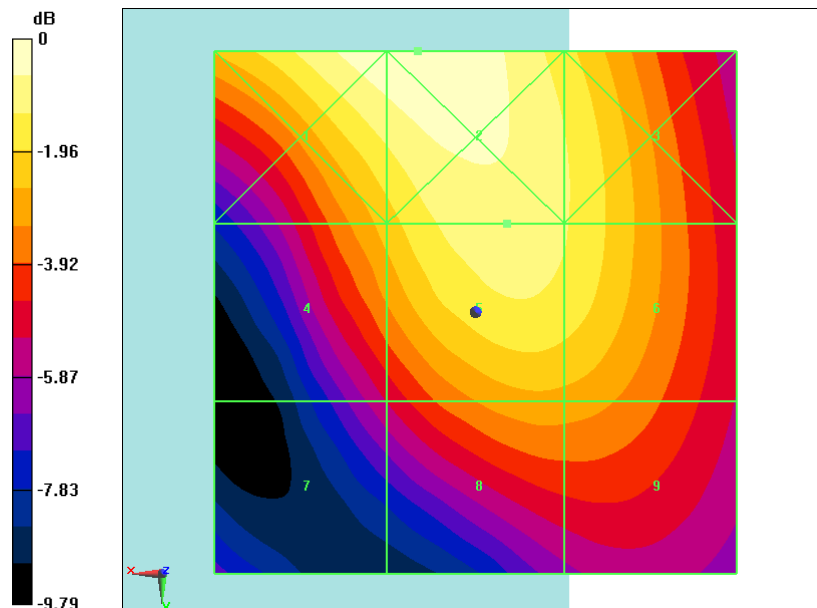
Applied MIF = -1.68 dB

RF audio interference level = 28.55 dBV/m

Emission category: M4

MIF scaled E-field

Grid 1 M4 29.29 dBV/m	Grid 2 M4 29.41 dBV/m	Grid 3 M4 28.2 dBV/m
Grid 4 M4 27.14 dBV/m	Grid 5 M4 28.55 dBV/m	Grid 6 M4 28.17 dBV/m
Grid 7 M4 24.25 dBV/m	Grid 8 M4 26.63 dBV/m	Grid 9 M4 26.56 dBV/m



0 dB = 29.56 V/m = 29.41 dBV/m

Fig B.18 HAC RF E-Field LTE Band41 QPSK CH40620

HAC RF E-Field LTE Band41 QPSK CH40185

Date: 2018-12-1

Electronics: DAE4 Sn1555

Medium: Air

Medium parameters used: $\sigma = 0$ mho/m, $\epsilon_r = 1$; $\rho = 1000$ kg/m³

Ambient Temperature: 22.0°C

Communication System: LTE Band41; Frequency: 2549.5 MHz; Duty Cycle: 1:1.58

Probe: ER3DV6 - SN2272;ConvF(1, 1, 1)

E Scan - ER3DV6 - 2011: 15 mm from Probe Center to the Device 2/Hearing Aid

Compatibility Test (101x101x1): Interpolated grid: dx=0.5000 mm, dy=0.5000 mm

Device Reference Point: 0, 0, -6.3 mm

Reference Value = 43.42 V/m; Power Drift = -0.07 dB

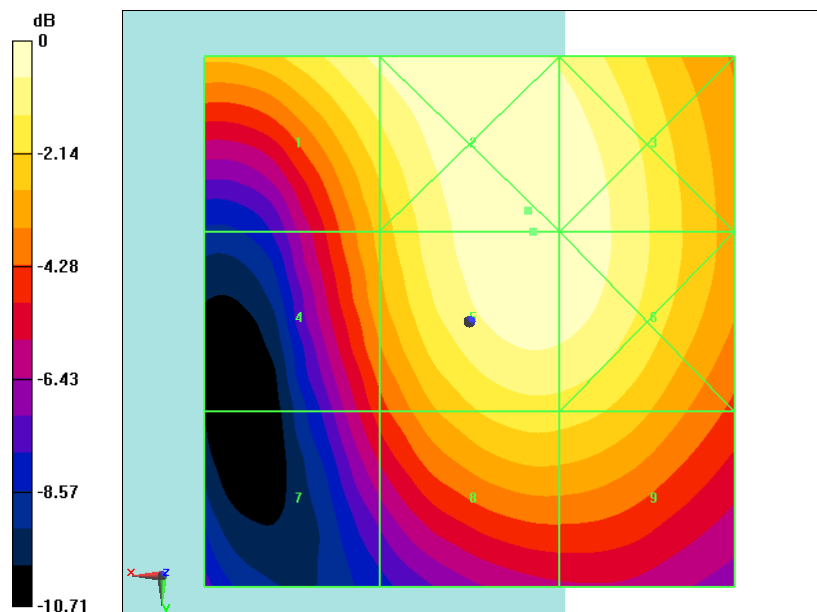
Applied MIF = -1.70 dB

RF audio interference level = 29.92 dBV/m

Emission category: M4

MIF scaled E-field

Grid 1 M4 29.41 dBV/m	Grid 2 M4 29.93 dBV/m	Grid 3 M4 29.81 dBV/m
Grid 4 M4 27.33 dBV/m	Grid 5 M4 29.92 dBV/m	Grid 6 M4 29.81 dBV/m
Grid 7 M4 25.29 dBV/m	Grid 8 M4 28.21 dBV/m	Grid 9 M4 28.15 dBV/m



0 dB = 31.37 V/m = 29.93 dBV/m

Fig B.19 HAC RF E-Field LTE Band41 QPSK CH40185

HAC RF E-Field LTE Band41 QPSK CH39750

Date: 2018-12-1

Electronics: DAE4 Sn1555

Medium: Air

Medium parameters used: $\sigma = 0$ mho/m, $\epsilon_r = 1$; $\rho = 1000$ kg/m³

Ambient Temperature: 22.0°C

Communication System: LTE Band41; Frequency: 2506 MHz; Duty Cycle: 1:1.58

Probe: ER3DV6 - SN2272;ConvF(1, 1, 1)

E Scan - ER3DV6 - 2011: 15 mm from Probe Center to the Device 3 2/Hearing Aid

Compatibility Test (101x101x1): Interpolated grid: dx=0.5000 mm, dy=0.5000 mm

Device Reference Point: 0, 0, -6.3 mm

Reference Value = 27.15 V/m; Power Drift = -0.02 dB

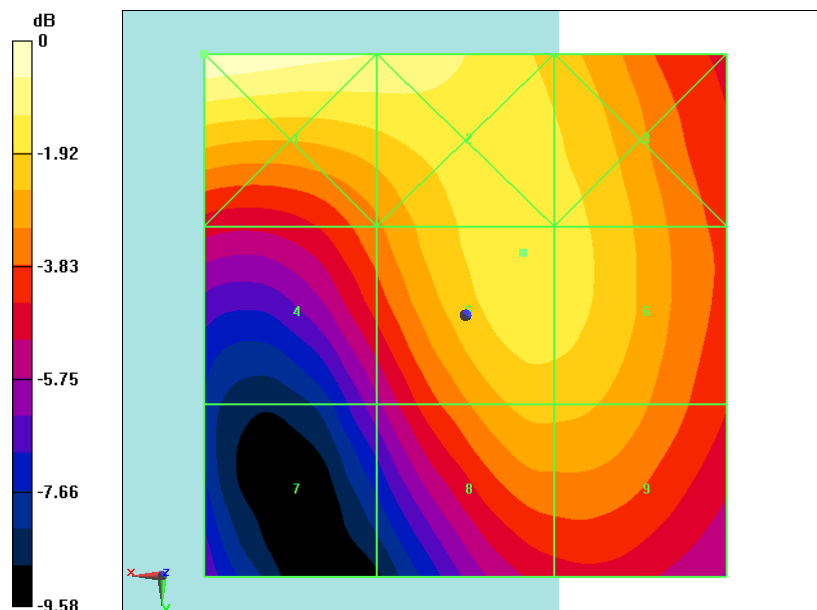
Applied MIF = -1.70 dB

RF audio interference level = 25.76 dBV/m

Emission category: M4

MIF scaled E-field

Grid 1 M4 27.18 dBV/m	Grid 2 M4 26.52 dBV/m	Grid 3 M4 25.59 dBV/m
Grid 4 M4 23.86 dBV/m	Grid 5 M4 25.76 dBV/m	Grid 6 M4 25.64 dBV/m
Grid 7 M4 21.27 dBV/m	Grid 8 M4 24.86 dBV/m	Grid 9 M4 24.85 dBV/m



0 dB = 22.85 V/m = 27.18 dBV/m

Fig B.20 HAC RF E-Field LTE Band41 QPSK CH39750

HAC RF E-Field LTE Band41 16QAM CH41490

Date: 2018-12-1

Electronics: DAE4 Sn1555

Medium: Air

Medium parameters used: $\sigma = 0$ mho/m, $\epsilon_r = 1$; $\rho = 1000$ kg/m³

Ambient Temperature: 22.0°C

Communication System: LTE Band41; Frequency: 2680 MHz; Duty Cycle: 1:1.58

Probe: ER3DV6 - SN2272;ConvF(1, 1, 1)

E Scan - ER3DV6 - 2011: 15 mm from Probe Center to the Device/Hearing Aid Compatibility Test (101x101x1): Interpolated grid: dx=0.5000 mm, dy=0.5000 mm

Device Reference Point: 0, 0, -6.3 mm

Reference Value = 36.20 V/m; Power Drift = -0.01 dB

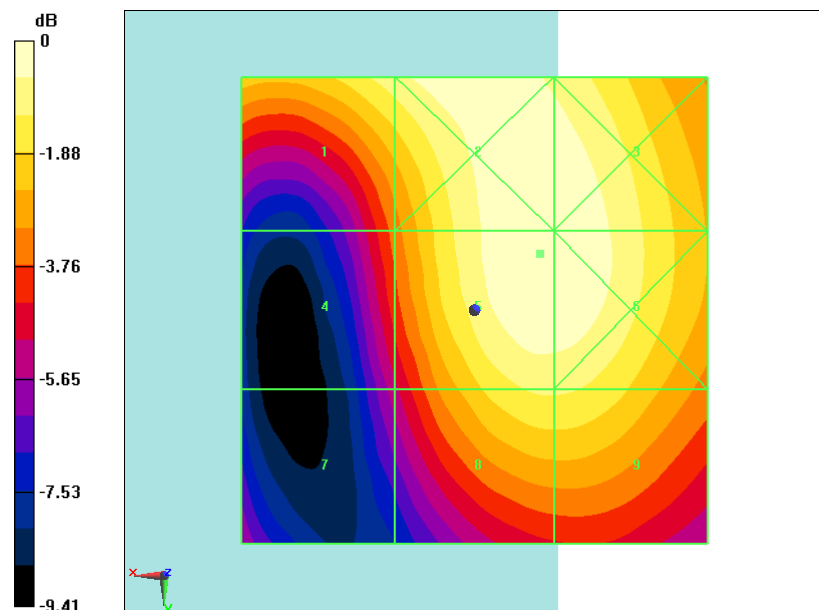
Applied MIF = -1.69 dB

RF audio interference level = 28.66 dBV/m

Emission category: M4

MIF scaled E-field

Grid 1 M4 27.81 dBV/m	Grid 2 M4 28.63 dBV/m	Grid 3 M4 28.59 dBV/m
Grid 4 M4 25.24 dBV/m	Grid 5 M4 28.66 dBV/m	Grid 6 M4 28.62 dBV/m
Grid 7 M4 23.49 dBV/m	Grid 8 M4 27.51 dBV/m	Grid 9 M4 27.51 dBV/m



0 dB = 27.10 V/m = 28.66 dBV/m

Fig B.21 HAC RF E-Field LTE Band41 16QAM CH41490

HAC RF E-Field LTE Band41 16QAM CH41055

Date: 2018-12-1

Electronics: DAE4 Sn1555

Medium: Air

Medium parameters used: $\sigma = 0$ mho/m, $\epsilon_r = 1$; $\rho = 1000$ kg/m³

Ambient Temperature: 22.0°C

Communication System: LTE Band41; Frequency: 2636.5 MHz; Duty Cycle: 1:1.58

Probe: ER3DV6 - SN2272;ConvF(1, 1, 1)

E Scan - ER3DV6 - 2011: 15 mm from Probe Center to the Device 2/Hearing Aid

Compatibility Test (101x101x1): Interpolated grid: dx=0.5000 mm, dy=0.5000 mm

Device Reference Point: 0, 0, -6.3 mm

Reference Value = 37.82 V/m; Power Drift = 0.04 dB

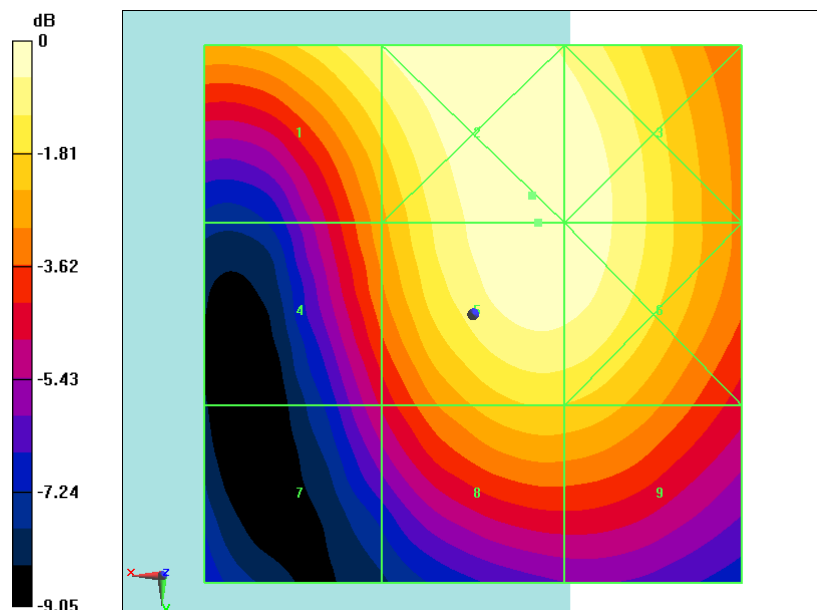
Applied MIF = -1.47 dB

RF audio interference level = 29.03 dBV/m

Emission category: M4

MIF scaled E-field

Grid 1 M4 28.5 dBV/m	Grid 2 M4 29.05 dBV/m	Grid 3 M4 28.96 dBV/m
Grid 4 M4 26.45 dBV/m	Grid 5 M4 29.03 dBV/m	Grid 6 M4 28.95 dBV/m
Grid 7 M4 24.34 dBV/m	Grid 8 M4 27.26 dBV/m	Grid 9 M4 27.21 dBV/m



0 dB = 28.35 V/m = 29.05 dBV/m

Fig B.22 HAC RF E-Field LTE Band41 16QAM CH41055

HAC RF E-Field LTE Band41 16QAM CH40620

Date: 2018-12-1

Electronics: DAE4 Sn1555

Medium: Air

Medium parameters used: $\sigma = 0$ mho/m, $\epsilon_r = 1$; $\rho = 1000$ kg/m³

Ambient Temperature: 22.0°C

Communication System: LTE Band41; Frequency: 2593 MHz; Duty Cycle: 1:1.58

Probe: ER3DV6 - SN2272;ConvF(1, 1, 1)

E Scan - ER3DV6 - 2011: 15 mm from Probe Center to the Device 3/Hearing Aid

Compatibility Test (101x101x1): Interpolated grid: dx=0.5000 mm, dy=0.5000 mm

Device Reference Point: 0, 0, -6.3 mm

Reference Value = 31.65 V/m; Power Drift = -0.00 dB

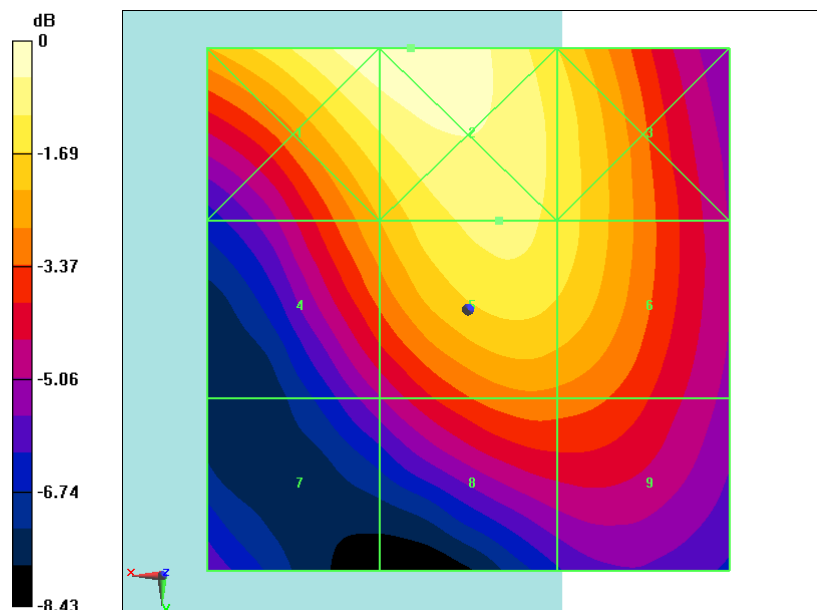
Applied MIF = -1.56 dB

RF audio interference level = 27.41 dBV/m

Emission category: M4

MIF scaled E-field

Grid 1 M4 28.23 dBV/m	Grid 2 M4 28.34 dBV/m	Grid 3 M4 27.07 dBV/m
Grid 4 M4 26.09 dBV/m	Grid 5 M4 27.41 dBV/m	Grid 6 M4 27.02 dBV/m
Grid 7 M4 23.24 dBV/m	Grid 8 M4 25.41 dBV/m	Grid 9 M4 25.34 dBV/m



0 dB = 26.12 V/m = 28.34 dBV/m

Fig B.23 HAC RF E-Field LTE Band41 16QAM CH40620

HAC RF E-Field LTE Band41 16QAM CH40185

Date: 2018-12-1

Electronics: DAE4 Sn1555

Medium: Air

Medium parameters used: $\sigma = 0$ mho/m, $\epsilon_r = 1$; $\rho = 1000$ kg/m³

Ambient Temperature: 22.0°C

Communication System: LTE Band41; Frequency: 2549.5 MHz; Duty Cycle: 1:1.58

Probe: ER3DV6 - SN2272;ConvF(1, 1, 1)

E Scan - ER3DV6 - 2011: 15 mm from Probe Center to the Device 3 3/Hearing Aid

Compatibility Test (101x101x1): Interpolated grid: dx=0.5000 mm, dy=0.5000 mm

Device Reference Point: 0, 0, -6.3 mm

Reference Value = 26.18 V/m; Power Drift = 0.01 dB

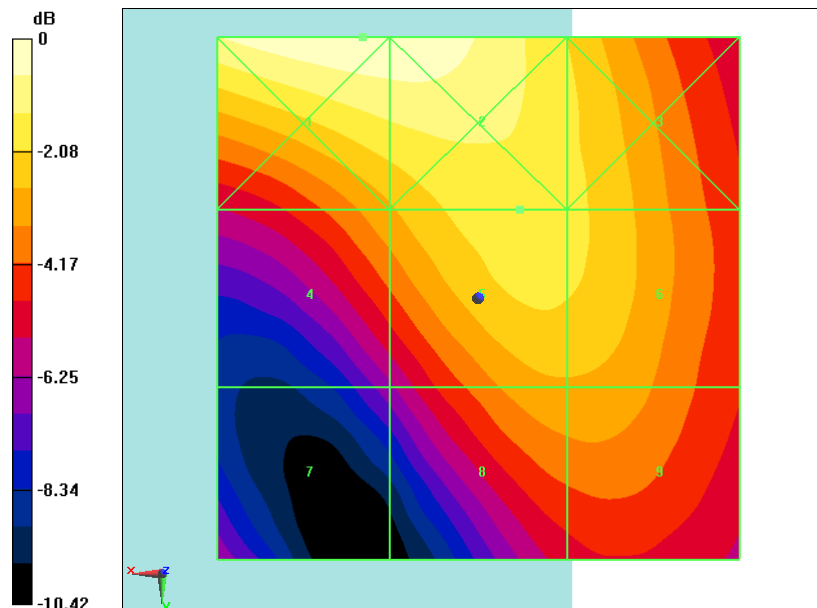
Applied MIF = -1.47 dB

RF audio interference level = 25.86 dBV/m

Emission category: M4

MIF scaled E-field

Grid 1 M4 27.45 dBV/m	Grid 2 M4 27.42 dBV/m	Grid 3 M4 25.61 dBV/m
Grid 4 M4 24.58 dBV/m	Grid 5 M4 25.86 dBV/m	Grid 6 M4 25.62 dBV/m
Grid 7 M4 21.17 dBV/m	Grid 8 M4 24.57 dBV/m	Grid 9 M4 24.57 dBV/m



0 dB = 23.58 V/m = 27.45 dBV/m

Fig B.24 HAC RF E-Field LTE Band41 16QAM CH40185

HAC RF E-Field LTE Band41 16QAM CH39750

Date: 2018-12-1

Electronics: DAE4 Sn1555

Medium: Air

Medium parameters used: $\sigma = 0$ mho/m, $\epsilon_r = 1$; $\rho = 1000$ kg/m³

Ambient Temperature: 22.0°C

Communication System: LTE Band41; Frequency: 2506 MHz; Duty Cycle: 1:1.58

Probe: ER3DV6 - SN2272;ConvF(1, 1, 1)

E Scan - ER3DV6 - 2011: 15 mm from Probe Center to the Device 3 2/Hearing Aid

Compatibility Test (101x101x1): Interpolated grid: dx=0.5000 mm, dy=0.5000 mm

Device Reference Point: 0, 0, -6.3 mm

Reference Value = 24.36 V/m; Power Drift = 0.04 dB

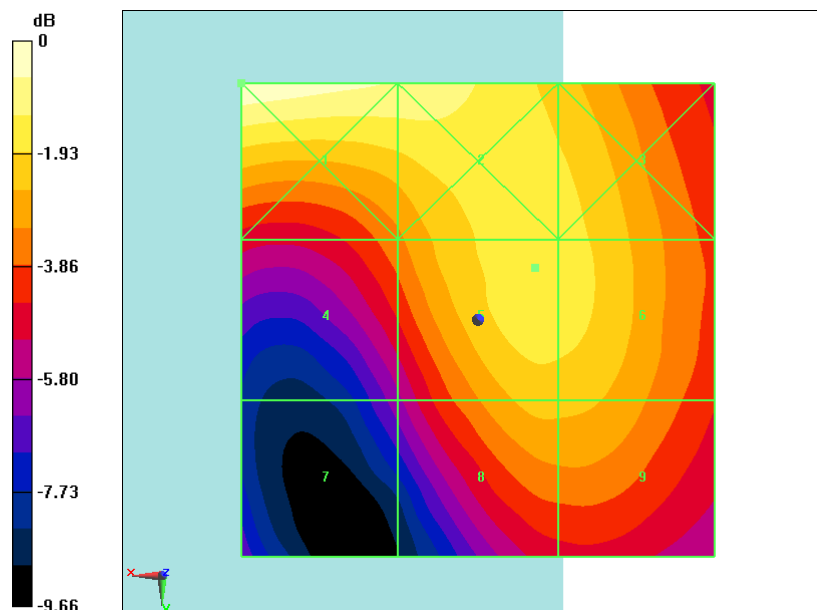
Applied MIF = -1.55 dB

RF audio interference level = 25.02 dBV/m

Emission category: M4

MIF scaled E-field

Grid 1 M4 26.43 dBV/m	Grid 2 M4 25.75 dBV/m	Grid 3 M4 24.83 dBV/m
Grid 4 M4 23.06 dBV/m	Grid 5 M4 25.02 dBV/m	Grid 6 M4 24.89 dBV/m
Grid 7 M4 20.46 dBV/m	Grid 8 M4 24.11 dBV/m	Grid 9 M4 24.09 dBV/m



0 dB = 20.97 V/m = 26.43 dBV/m

Fig B.25 HAC RF E-Field LTE Band41 16QAM CH39750

HAC RF E-Field LTE Band41 64QAM CH41490

Date: 2018-12-1

Electronics: DAE4 Sn1555

Medium: Air

Medium parameters used: $\sigma = 0$ mho/m, $\epsilon_r = 1$; $\rho = 1000$ kg/m³

Ambient Temperature: 22.0°C

Communication System: LTE Band41; Frequency: 2680 MHz; Duty Cycle: 1:1.58

Probe: ER3DV6 - SN2272;ConvF(1, 1, 1)

E Scan - ER3DV6 - 2011: 15 mm from Probe Center to the Device/Hearing Aid Compatibility Test (101x101x1): Interpolated grid: dx=0.5000 mm, dy=0.5000 mm

Device Reference Point: 0, 0, -6.3 mm

Reference Value = 36.27 V/m; Power Drift = 0.01 dB

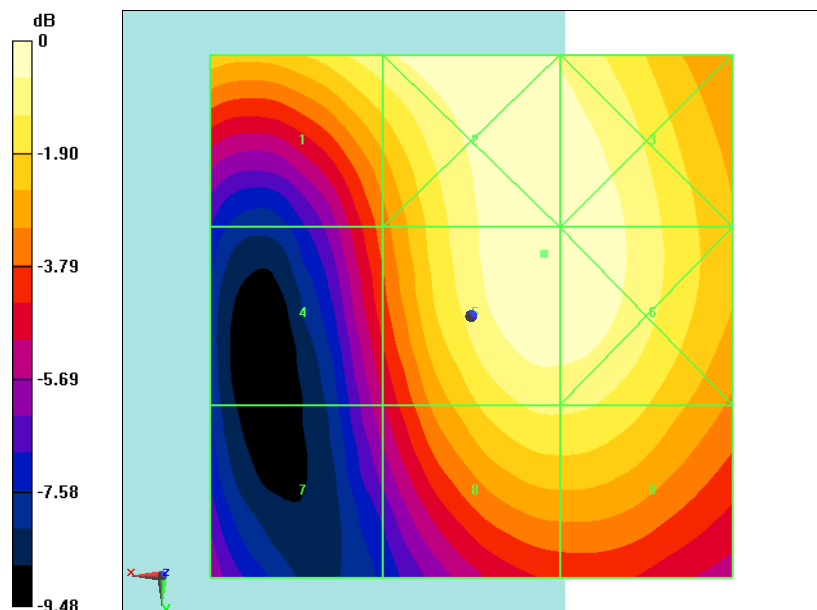
Applied MIF = -1.70 dB

RF audio interference level = 28.66 dBV/m

Emission category: M4

MIF scaled E-field

Grid 1 M4 27.89 dBV/m	Grid 2 M4 28.64 dBV/m	Grid 3 M4 28.61 dBV/m
Grid 4 M4 25.19 dBV/m	Grid 5 M4 28.66 dBV/m	Grid 6 M4 28.63 dBV/m
Grid 7 M4 23.51 dBV/m	Grid 8 M4 27.55 dBV/m	Grid 9 M4 27.54 dBV/m



0 dB = 27.11 V/m = 28.66 dBV/m

Fig B.26 HAC RF E-Field LTE Band41 64QAM CH41490

HAC RF E-Field LTE Band41 64QAM CH41055

Date: 2018-12-1

Electronics: DAE4 Sn1555

Medium: Air

Medium parameters used: $\sigma = 0$ mho/m, $\epsilon_r = 1$; $\rho = 1000$ kg/m³

Ambient Temperature: 22.0°C

Communication System: LTE Band41; Frequency: 2636.5 MHz; Duty Cycle: 1:1.58

Probe: ER3DV6 - SN2272;ConvF(1, 1, 1)

E Scan - ER3DV6 - 2011: 15 mm from Probe Center to the Device 2/Hearing Aid

Compatibility Test (101x101x1): Interpolated grid: dx=0.5000 mm, dy=0.5000 mm

Device Reference Point: 0, 0, -6.3 mm

Reference Value = 38.33 V/m; Power Drift = -0.02 dB

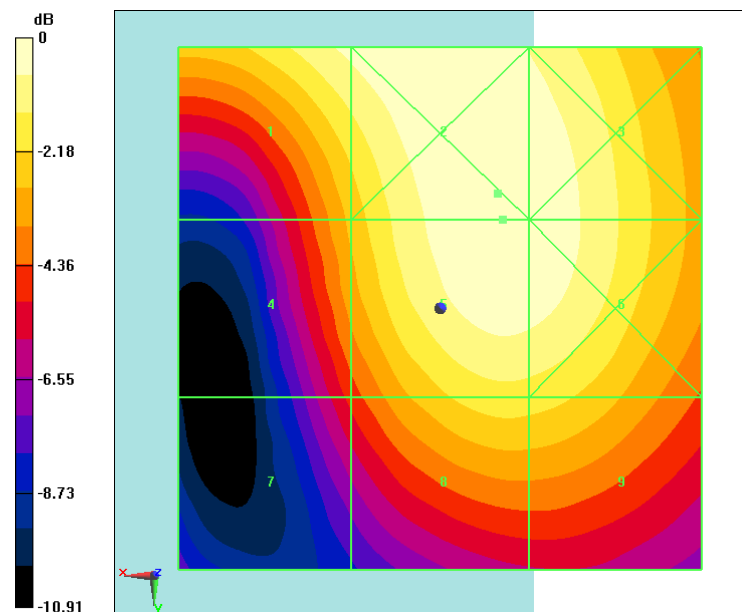
Applied MIF = -1.58 dB

RF audio interference level = 29.01 dBV/m

Emission category: M4

MIF scaled E-field

Grid 1 M4 28.53 dBV/m	Grid 2 M4 29.03 dBV/m	Grid 3 M4 28.9 dBV/m
Grid 4 M4 26.36 dBV/m	Grid 5 M4 29.01 dBV/m	Grid 6 M4 28.9 dBV/m
Grid 7 M4 24.25 dBV/m	Grid 8 M4 27.28 dBV/m	Grid 9 M4 27.22 dBV/m



0 dB = 28.28 V/m = 29.03 dBV/m

Fig B.27 HAC RF E-Field LTE Band41 64QAM CH41055

HAC RF E-Field LTE Band41 64QAM CH40620

Date: 2018-12-1

Electronics: DAE4 Sn1555

Medium: Air

Medium parameters used: $\sigma = 0$ mho/m, $\epsilon_r = 1$; $\rho = 1000$ kg/m³

Ambient Temperature: 22.0°C

Communication System: LTE Band41; Frequency: 2593 MHz; Duty Cycle: 1:1.58

Probe: ER3DV6 - SN2272;ConvF(1, 1, 1)

E Scan - ER3DV6 - 2011: 15 mm from Probe Center to the Device 3/Hearing Aid

Compatibility Test (101x101x1): Interpolated grid: dx=0.5000 mm, dy=0.5000 mm

Device Reference Point: 0, 0, -6.3 mm

Reference Value = 31.70 V/m; Power Drift = -0.03 dB

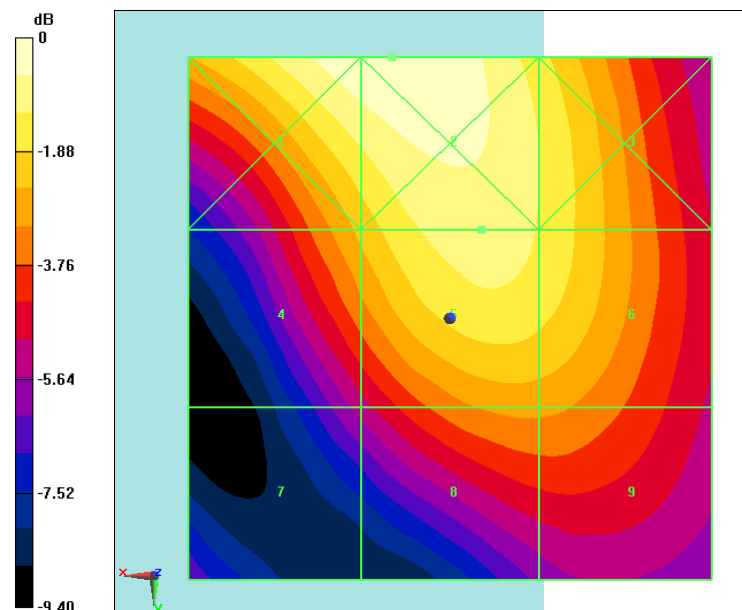
Applied MIF = -1.49 dB

RF audio interference level = 27.56 dBV/m

Emission category: M4

MIF scaled E-field

Grid 1 M4 28.34 dBV/m	Grid 2 M4 28.44 dBV/m	Grid 3 M4 27.2 dBV/m
Grid 4 M4 26.13 dBV/m	Grid 5 M4 27.56 dBV/m	Grid 6 M4 27.14 dBV/m
Grid 7 M4 23.12 dBV/m	Grid 8 M4 25.52 dBV/m	Grid 9 M4 25.49 dBV/m



0 dB = 26.42 V/m = 28.44 dBV/m

Fig B.28 HAC RF E-Field LTE Band41 64QAM CH40620

HAC RF E-Field LTE Band41 64QAM CH40185

Date: 2018-12-1

Electronics: DAE4 Sn1555

Medium: Air

Medium parameters used: $\sigma = 0$ mho/m, $\epsilon_r = 1$; $\rho = 1000$ kg/m³

Ambient Temperature: 22.0°C

Communication System: LTE Band41; Frequency: 2549.5 MHz; Duty Cycle: 1:1.58

Probe: ER3DV6 - SN2272;ConvF(1, 1, 1)

E Scan - ER3DV6 - 2011: 15 mm from Probe Center to the Device 3 3/Hearing Aid

Compatibility Test (101x101x1): Interpolated grid: dx=0.5000 mm, dy=0.5000 mm

Device Reference Point: 0, 0, -6.3 mm

Reference Value = 25.89 V/m; Power Drift = 0.05 dB

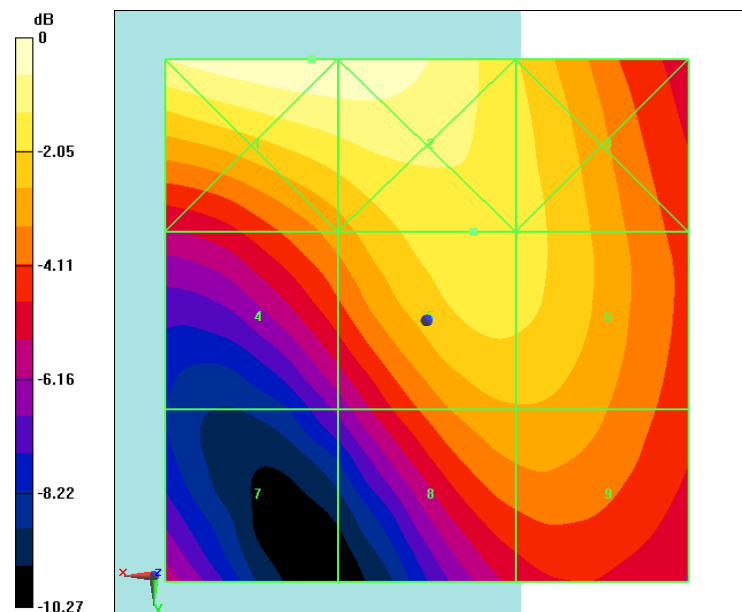
Applied MIF = -1.68 dB

RF audio interference level = 25.69 dBV/m

Emission category: M4

MIF scaled E-field

Grid 1 M4 27.27 dBV/m	Grid 2 M4 27.23 dBV/m	Grid 3 M4 25.54 dBV/m
Grid 4 M4 24.2 dBV/m	Grid 5 M4 25.69 dBV/m	Grid 6 M4 25.54 dBV/m
Grid 7 M4 21.58 dBV/m	Grid 8 M4 24.47 dBV/m	Grid 9 M4 24.48 dBV/m



0 dB = 23.08 V/m = 27.26 dBV/m

Fig B.29 HAC RF E-Field LTE Band41 64QAM CH40185

HAC RF E-Field LTE Band41 64QAM CH39750

Date: 2018-12-1

Electronics: DAE4 Sn1555

Medium: Air

Medium parameters used: $\sigma = 0$ mho/m, $\epsilon_r = 1$; $\rho = 1000$ kg/m³

Ambient Temperature: 22.0°C

Communication System: LTE Band41; Frequency: 2506 MHz; Duty Cycle: 1:1.58

Probe: ER3DV6 - SN2272;ConvF(1, 1, 1)

E Scan - ER3DV6 - 2011: 15 mm from Probe Center to the Device 3 2/Hearing Aid

Compatibility Test (101x101x1): Interpolated grid: dx=0.5000 mm, dy=0.5000 mm

Device Reference Point: 0, 0, -6.3 mm

Reference Value = 23.92 V/m; Power Drift = -0.04 dB

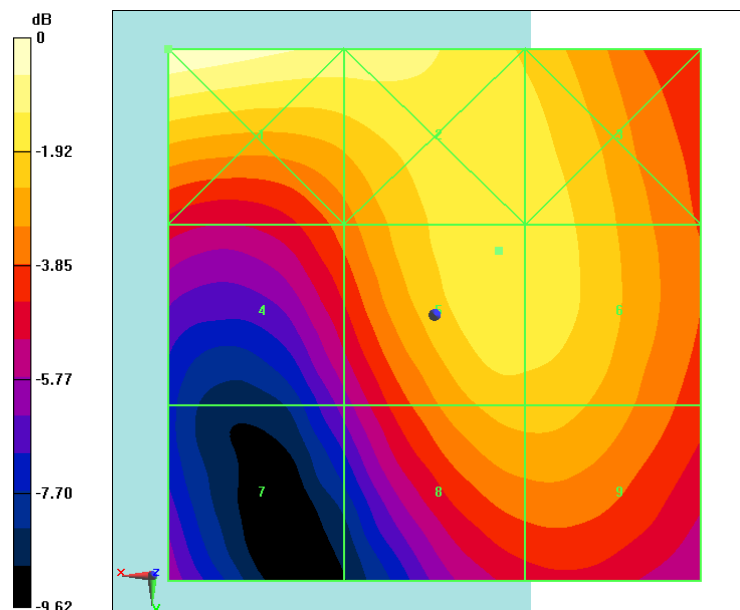
Applied MIF = -1.55 dB

RF audio interference level = 24.94 dBV/m

Emission category: M4

MIF scaled E-field

Grid 1 M4 26.25 dBV/m	Grid 2 M4 25.45 dBV/m	Grid 3 M4 24.8 dBV/m
Grid 4 M4 22.73 dBV/m	Grid 5 M4 24.94 dBV/m	Grid 6 M4 24.84 dBV/m
Grid 7 M4 20.45 dBV/m	Grid 8 M4 24.01 dBV/m	Grid 9 M4 24.01 dBV/m



0 dB = 20.53 V/m = 26.25 dBV/m

Fig B.30 HAC RF E-Field LTE Band41 64QAM CH39750

HAC RF E-Field LTE Band41 QPSK CH41490

Date: 2018-12-1

Electronics: DAE4 Sn1555

Medium: Air

Medium parameters used: $\sigma = 0$ mho/m, $\epsilon_r = 1$; $\rho = 1000$ kg/m³

Ambient Temperature: 22.0°C

Communication System: LTE Band41; Frequency: 2680 MHz; Duty Cycle: 1:1.58

Probe: ER3DV6 - SN2272;ConvF(1, 1, 1)

E Scan - ER3DV6 - 2011: 15 mm from Probe Center to the Device/Hearing Aid Compatibility Test (101x101x1): Interpolated grid: dx=0.5000 mm, dy=0.5000 mm

Device Reference Point: 0, 0, -6.3 mm

Reference Value = 33.96 V/m; Power Drift = 0.05 dB

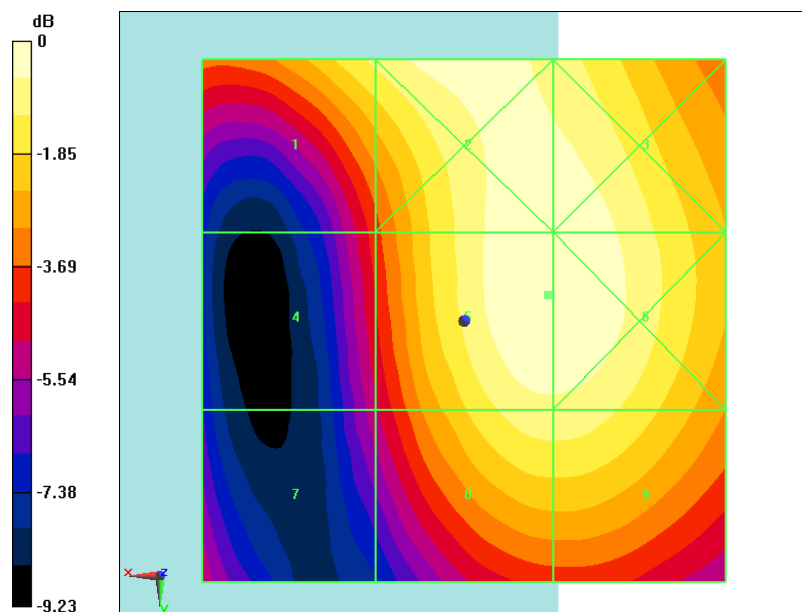
Applied MIF = -1.18 dB

RF audio interference level = 28.70 dBV/m

Emission category: M4

MIF scaled E-field

Grid 1 M4 27.65 dBV/m	Grid 2 M4 28.59 dBV/m	Grid 3 M4 28.57 dBV/m
Grid 4 M4 24.77 dBV/m	Grid 5 M4 28.7 dBV/m	Grid 6 M4 28.7 dBV/m
Grid 7 M4 23.71 dBV/m	Grid 8 M4 27.91 dBV/m	Grid 9 M4 27.91 dBV/m



0 dB = 27.23 V/m = 28.70 dBV/m

Fig B.31 HAC RF E-Field LTE Band41 QPSK CH41490

HAC RF E-Field LTE Band41 QPSK CH41055

Date: 2018-12-1

Electronics: DAE4 Sn1555

Medium: Air

Medium parameters used: $\sigma = 0$ mho/m, $\epsilon_r = 1$; $\rho = 1000$ kg/m³

Ambient Temperature: 22.0°C

Communication System: LTE Band41; Frequency: 2636.5 MHz; Duty Cycle: 1:1.58

Probe: ER3DV6 - SN2272;ConvF(1, 1, 1)

E Scan - ER3DV6 - 2011: 15 mm from Probe Center to the Device 2/Hearing Aid

Compatibility Test (101x101x1): Interpolated grid: dx=0.5000 mm, dy=0.5000 mm

Device Reference Point: 0, 0, -6.3 mm

Reference Value = 34.14 V/m; Power Drift = 0.04 dB

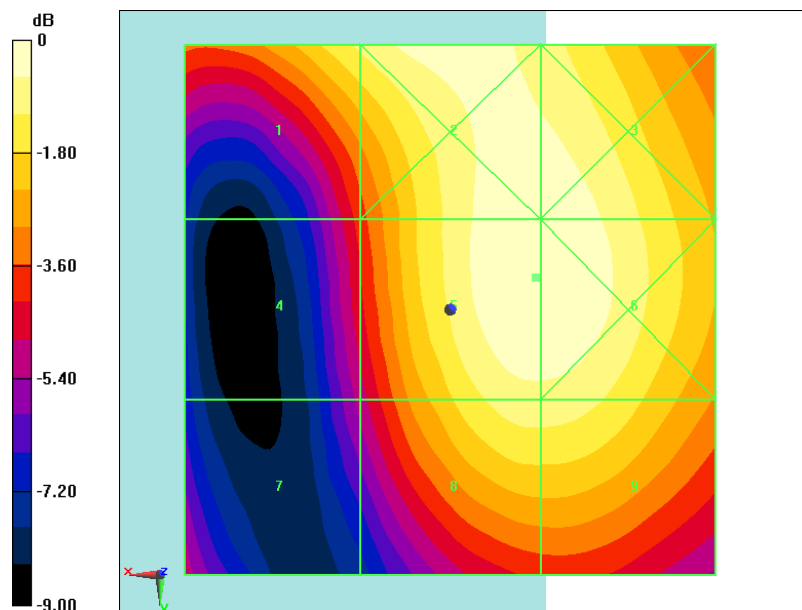
Applied MIF = -1.10 dB

RF audio interference level = 28.78 dBV/m

Emission category: M4

MIF scaled E-field

Grid 1 M4 27.73 dBV/m	Grid 2 M4 28.66 dBV/m	Grid 3 M4 28.65 dBV/m
Grid 4 M4 24.89 dBV/m	Grid 5 M4 28.78 dBV/m	Grid 6 M4 28.78 dBV/m
Grid 7 M4 23.84 dBV/m	Grid 8 M4 27.96 dBV/m	Grid 9 M4 27.96 dBV/m



0 dB = 27.48 V/m = 28.78 dBV/m

Fig B.32 HAC RF E-Field LTE Band41 QPSK CH41055

HAC RF E-Field LTE Band41 QPSK CH40620

Date: 2018-12-1

Electronics: DAE4 Sn1555

Medium: Air

Medium parameters used: $\sigma = 0$ mho/m, $\epsilon_r = 1$; $\rho = 1000$ kg/m³

Ambient Temperature: 22.0°C

Communication System: LTE Band41; Frequency: 2593 MHz; Duty Cycle: 1:1.58

Probe: ER3DV6 - SN2272;ConvF(1, 1, 1)

E Scan - ER3DV6 - 2011: 15 mm from Probe Center to the Device 3/Hearing Aid

Compatibility Test (101x101x1): Interpolated grid: dx=0.5000 mm, dy=0.5000 mm

Device Reference Point: 0, 0, -6.3 mm

Reference Value = 30.72 V/m; Power Drift = -0.02 dB

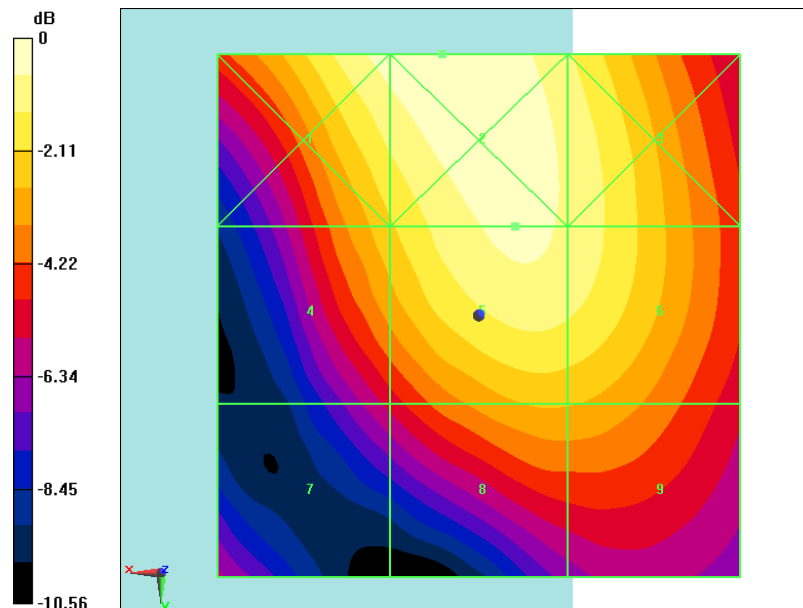
Applied MIF = -1.30 dB

RF audio interference level = 27.41 dBV/m

Emission category: M4

MIF scaled E-field

Grid 1 M4 27.6 dBV/m	Grid 2 M4 27.95 dBV/m	Grid 3 M4 27.14 dBV/m
Grid 4 M4 25.73 dBV/m	Grid 5 M4 27.41 dBV/m	Grid 6 M4 27.1 dBV/m
Grid 7 M4 22.57 dBV/m	Grid 8 M4 25.22 dBV/m	Grid 9 M4 25.18 dBV/m



0 dB = 24.97 V/m = 27.95 dBV/m

Fig B.33 HAC RF E-Field LTE Band41 QPSK CH40620

HAC RF E-Field LTE Band41 QPSK CH40185

Date: 2018-12-1

Electronics: DAE4 Sn1555

Medium: Air

Medium parameters used: $\sigma = 0$ mho/m, $\epsilon_r = 1$; $\rho = 1000$ kg/m³

Ambient Temperature: 22.0°C

Communication System: LTE Band41; Frequency: 2549.5 MHz; Duty Cycle: 1:1.58

Probe: ER3DV6 - SN2272;ConvF(1, 1, 1)

E Scan - ER3DV6 - 2011: 15 mm from Probe Center to the Device 3 3/Hearing Aid

Compatibility Test (101x101x1): Interpolated grid: dx=0.5000 mm, dy=0.5000 mm

Device Reference Point: 0, 0, -6.3 mm

Reference Value = 24.67 V/m; Power Drift = -0.04 dB

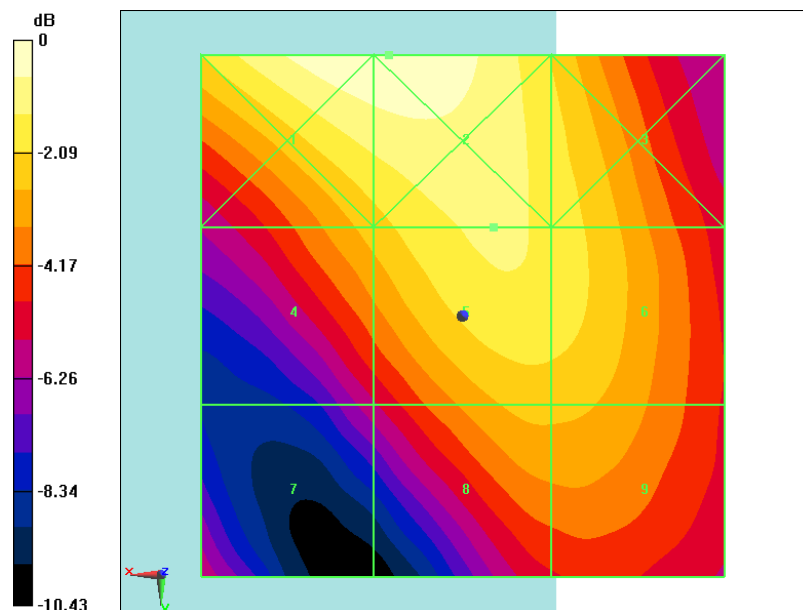
Applied MIF = -1.22 dB

RF audio interference level = 25.41 dBV/m

Emission category: M4

MIF scaled E-field

Grid 1 M4 26.66 dBV/m	Grid 2 M4 26.67 dBV/m	Grid 3 M4 25.06 dBV/m
Grid 4 M4 24.25 dBV/m	Grid 5 M4 25.41 dBV/m	Grid 6 M4 25.08 dBV/m
Grid 7 M4 21.16 dBV/m	Grid 8 M4 24.14 dBV/m	Grid 9 M4 24.13 dBV/m



0 dB = 21.55 V/m = 26.67 dBV/m

Fig B.34 HAC RF E-Field LTE Band41 QPSK CH40185

HAC RF E-Field LTE Band41 QPSK CH39750

Date: 2018-12-1

Electronics: DAE4 Sn1555

Medium: Air

Medium parameters used: $\sigma = 0$ mho/m, $\epsilon_r = 1$; $\rho = 1000$ kg/m³

Ambient Temperature: 22.0°C

Communication System: LTE Band41; Frequency: 2506 MHz; Duty Cycle: 1:1.58

Probe: ER3DV6 - SN2272;ConvF(1, 1, 1)

E Scan - ER3DV6 - 2011: 15 mm from Probe Center to the Device 3 2/Hearing Aid

Compatibility Test (101x101x1): Interpolated grid: dx=0.5000 mm, dy=0.5000 mm

Device Reference Point: 0, 0, -6.3 mm

Reference Value = 22.09 V/m; Power Drift = 0.01 dB

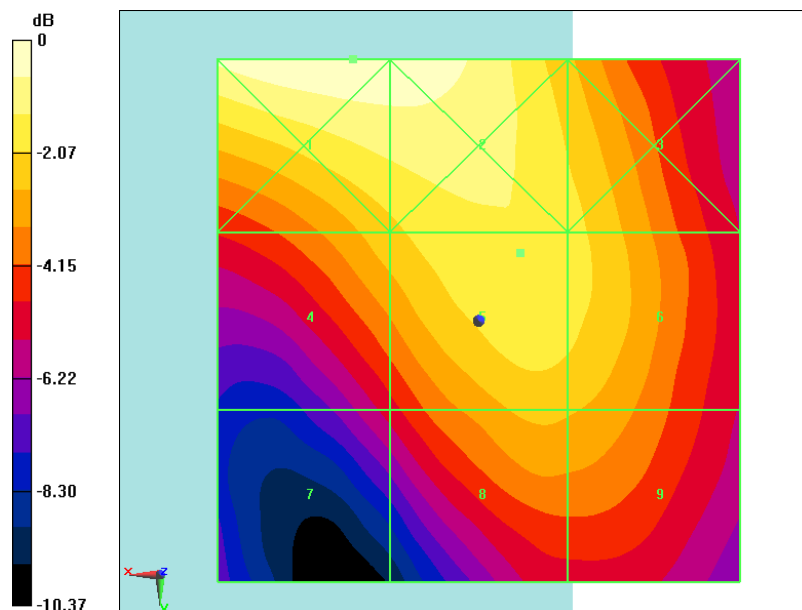
Applied MIF = -1.07 dB

RF audio interference level = 24.52 dBV/m

Emission category: M4

MIF scaled E-field

Grid 1 M4 25.92 dBV/m	Grid 2 M4 25.85 dBV/m	Grid 3 M4 24.14 dBV/m
Grid 4 M4 23.64 dBV/m	Grid 5 M4 24.52 dBV/m	Grid 6 M4 24.2 dBV/m
Grid 7 M4 20.77 dBV/m	Grid 8 M4 23.37 dBV/m	Grid 9 M4 23.26 dBV/m



0 dB = 19.78 V/m = 25.92 dBV/m

Fig B.35 HAC RF E-Field LTE Band41 QPSK CH39750

HAC RF E-Field LTE Band41 16QAM CH41490

Date: 2018-12-1

Electronics: DAE4 Sn1555

Medium: Air

Medium parameters used: $\sigma = 0$ mho/m, $\epsilon_r = 1$; $\rho = 1000$ kg/m³

Ambient Temperature: 22.0°C

Communication System: LTE Band41; Frequency: 2680 MHz; Duty Cycle: 1:1.58

Probe: ER3DV6 - SN2272;ConvF(1, 1, 1)

E Scan - ER3DV6 - 2011: 15 mm from Probe Center to the Device/Hearing Aid Compatibility Test (101x101x1): Interpolated grid: dx=0.5000 mm, dy=0.5000 mm

Device Reference Point: 0, 0, -6.3 mm

Reference Value = 32.45 V/m; Power Drift = -0.04 dB

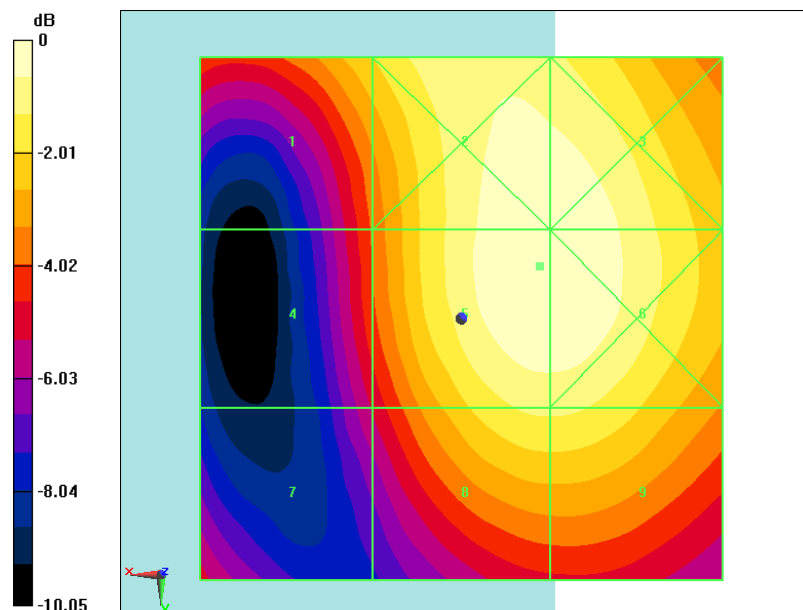
Applied MIF = -1.79 dB

RF audio interference level = 27.51 dBV/m

Emission category: M4

MIF scaled E-field

Grid 1 M4 25.51 dBV/m	Grid 2 M4 27.43 dBV/m	Grid 3 M4 27.42 dBV/m
Grid 4 M4 23.62 dBV/m	Grid 5 M4 27.51 dBV/m	Grid 6 M4 27.5 dBV/m
Grid 7 M4 22.55 dBV/m	Grid 8 M4 26.33 dBV/m	Grid 9 M4 26.33 dBV/m



0 dB = 23.74 V/m = 27.51 dBV/m

Fig B.36 HAC RF E-Field LTE Band41 16QAM CH41490

HAC RF E-Field LTE Band41 16QAM CH41055

Date: 2018-12-1

Electronics: DAE4 Sn1555

Medium: Air

Medium parameters used: $\sigma = 0$ mho/m, $\epsilon_r = 1$; $\rho = 1000$ kg/m³

Ambient Temperature: 22.0°C

Communication System: LTE Band41; Frequency: 2636.5 MHz; Duty Cycle: 1:1.58

Probe: ER3DV6 - SN2272;ConvF(1, 1, 1)

E Scan - ER3DV6 - 2011: 15 mm from Probe Center to the Device 2/Hearing Aid

Compatibility Test (101x101x1): Interpolated grid: dx=0.5000 mm, dy=0.5000 mm

Device Reference Point: 0, 0, -6.3 mm

Reference Value = 34.33 V/m; Power Drift = -0.02 dB

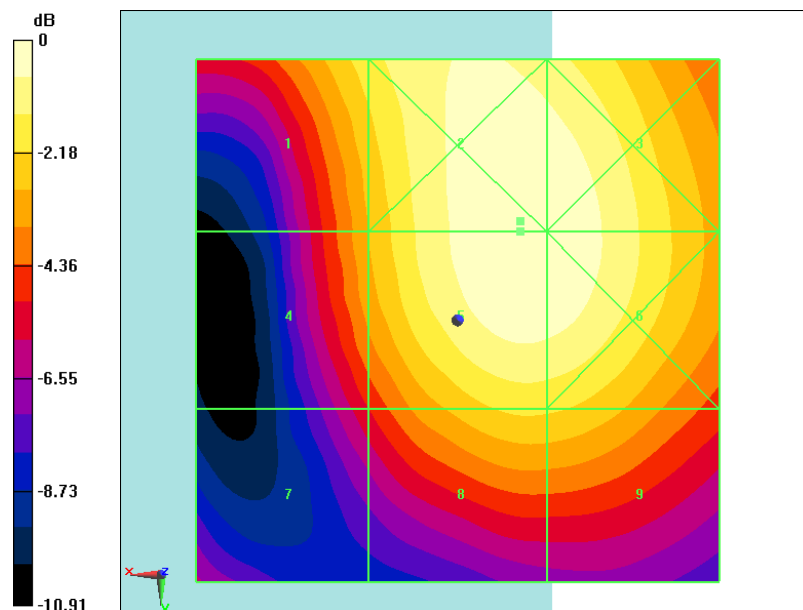
Applied MIF = -1.64 dB

RF audio interference level = 27.99 dBV/m

Emission category: M4

MIF scaled E-field

Grid 1 M4 26.26 dBV/m	Grid 2 M4 28 dBV/m	Grid 3 M4 27.9 dBV/m
Grid 4 M4 25.1 dBV/m	Grid 5 M4 27.99 dBV/m	Grid 6 M4 27.91 dBV/m
Grid 7 M4 22.91 dBV/m	Grid 8 M4 25.98 dBV/m	Grid 9 M4 25.93 dBV/m



0 dB = 25.11 V/m = 28.00 dBV/m

Fig B.37 HAC RF E-Field LTE Band41 16QAM CH41055

HAC RF E-Field LTE Band41 16QAM CH40620

Date: 2018-12-1

Electronics: DAE4 Sn1555

Medium: Air

Medium parameters used: $\sigma = 0$ mho/m, $\epsilon_r = 1$; $\rho = 1000$ kg/m³

Ambient Temperature: 22.0°C

Communication System: LTE Band41; Frequency: 2593 MHz; Duty Cycle: 1:1.58

Probe: ER3DV6 - SN2272;ConvF(1, 1, 1)

E Scan - ER3DV6 - 2011: 15 mm from Probe Center to the Device 3/Hearing Aid

Compatibility Test (101x101x1): Interpolated grid: dx=0.5000 mm, dy=0.5000 mm

Device Reference Point: 0, 0, -6.3 mm

Reference Value = 27.84 V/m; Power Drift = 0.00 dB

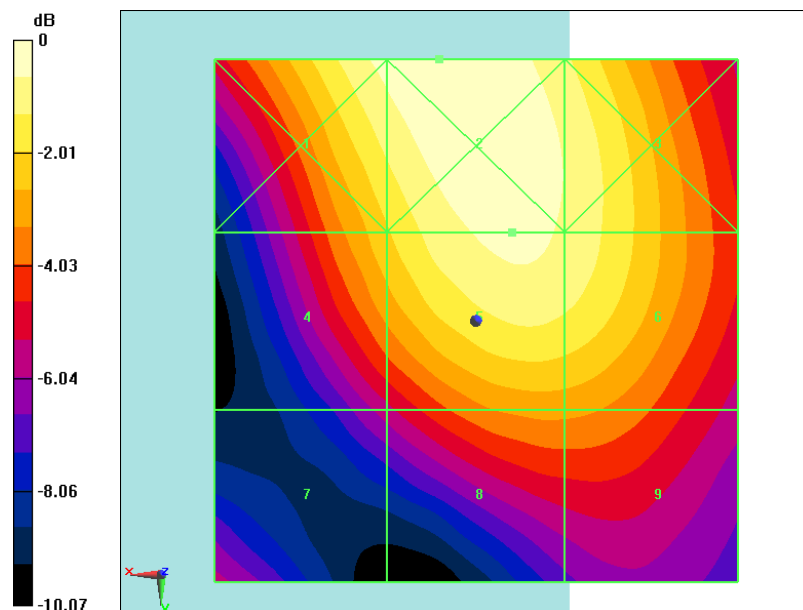
Applied MIF = -1.75 dB

RF audio interference level = 26.21 dBV/m

Emission category: M4

MIF scaled E-field

Grid 1 M4 26.29 dBV/m	Grid 2 M4 26.69 dBV/m	Grid 3 M4 26 dBV/m
Grid 4 M4 24.6 dBV/m	Grid 5 M4 26.21 dBV/m	Grid 6 M4 25.91 dBV/m
Grid 7 M4 21.11 dBV/m	Grid 8 M4 23.59 dBV/m	Grid 9 M4 23.56 dBV/m



0 dB = 21.61 V/m = 26.69 dBV/m

Fig B.38 HAC RF E-Field LTE Band41 16QAM CH40620

HAC RF E-Field LTE Band41 16QAM CH40185

Date: 2018-12-1

Electronics: DAE4 Sn1555

Medium: Air

Medium parameters used: $\sigma = 0$ mho/m, $\epsilon_r = 1$; $\rho = 1000$ kg/m³

Ambient Temperature: 22.0°C

Communication System: LTE Band41; Frequency: 2549.5 MHz; Duty Cycle: 1:1.58

Probe: ER3DV6 - SN2272;ConvF(1, 1, 1)

E Scan - ER3DV6 - 2011: 15 mm from Probe Center to the Device 3 3/Hearing Aid

Compatibility Test (101x101x1): Interpolated grid: dx=0.5000 mm, dy=0.5000 mm

Device Reference Point: 0, 0, -6.3 mm

Reference Value = 21.99 V/m; Power Drift = -0.11 dB

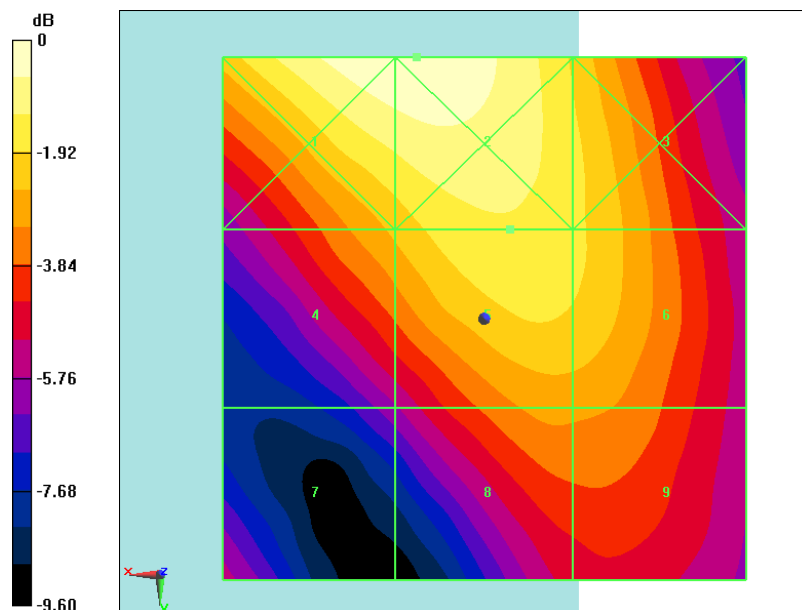
Applied MIF = -1.81 dB

RF audio interference level = 23.90 dBV/m

Emission category: M4

MIF scaled E-field

Grid 1 M4 25.22 dBV/m	Grid 2 M4 25.25 dBV/m	Grid 3 M4 23.53 dBV/m
Grid 4 M4 22.86 dBV/m	Grid 5 M4 23.9 dBV/m	Grid 6 M4 23.51 dBV/m
Grid 7 M4 19.9 dBV/m	Grid 8 M4 22.28 dBV/m	Grid 9 M4 22.25 dBV/m



0 dB = 18.30 V/m = 25.25 dBV/m

Fig B.39 HAC RF E-Field LTE Band41 16QAM CH40185

HAC RF E-Field LTE Band41 16QAM CH39750

Date: 2018-12-1

Electronics: DAE4 Sn1555

Medium: Air

Medium parameters used: $\sigma = 0$ mho/m, $\epsilon_r = 1$; $\rho = 1000$ kg/m³

Ambient Temperature: 22.0°C

Communication System: LTE Band41; Frequency: 2506 MHz; Duty Cycle: 1:1.58

Probe: ER3DV6 - SN2272;ConvF(1, 1, 1)

E Scan - ER3DV6 - 2011: 15 mm from Probe Center to the Device 3 2/Hearing Aid

Compatibility Test (101x101x1): Interpolated grid: dx=0.5000 mm, dy=0.5000 mm

Device Reference Point: 0, 0, -6.3 mm

Reference Value = 19.52 V/m; Power Drift = -0.02 dB

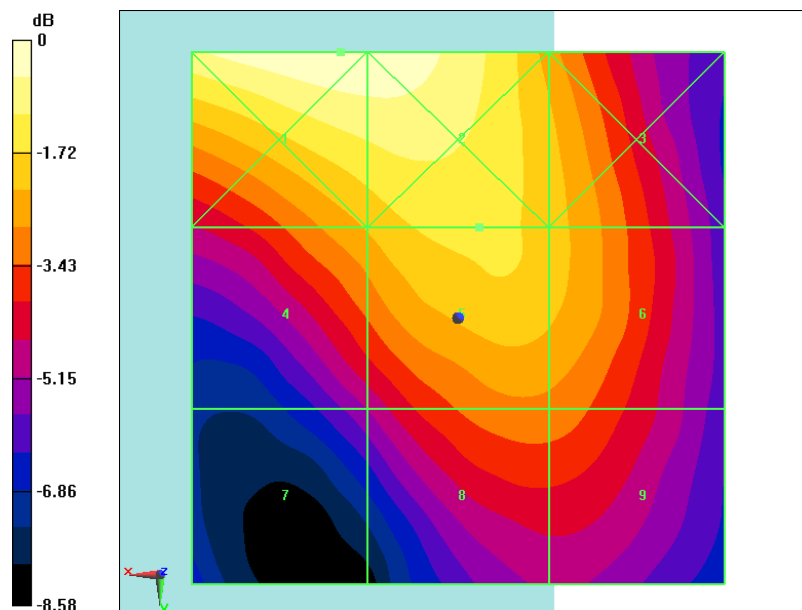
Applied MIF = -1.61 dB

RF audio interference level = 22.93 dBV/m

Emission category: M4

MIF scaled E-field

Grid 1 M4 24.47 dBV/m	Grid 2 M4 24.42 dBV/m	Grid 3 M4 22.49 dBV/m
Grid 4 M4 22.25 dBV/m	Grid 5 M4 22.93 dBV/m	Grid 6 M4 22.49 dBV/m
Grid 7 M4 19.36 dBV/m	Grid 8 M4 21.48 dBV/m	Grid 9 M4 21.44 dBV/m



0 dB = 16.72 V/m = 24.46 dBV/m

Fig B.40 HAC RF E-Field LTE Band41 16QAM CH39750

HAC RF E-Field LTE Band41 64QAM CH41490

Date: 2018-12-1

Electronics: DAE4 Sn1555

Medium: Air

Medium parameters used: $\sigma = 0$ mho/m, $\epsilon_r = 1$; $\rho = 1000$ kg/m³

Ambient Temperature: 22.0°C

Communication System: LTE Band41; Frequency: 2680 MHz; Duty Cycle: 1:1.58

Probe: ER3DV6 - SN2272;ConvF(1, 1, 1)

E Scan - ER3DV6 - 2011: 15 mm from Probe Center to the Device/Hearing Aid Compatibility Test (101x101x1): Interpolated grid: dx=0.5000 mm, dy=0.5000 mm

Device Reference Point: 0, 0, -6.3 mm

Reference Value = 32.79 V/m; Power Drift = -0.04 dB

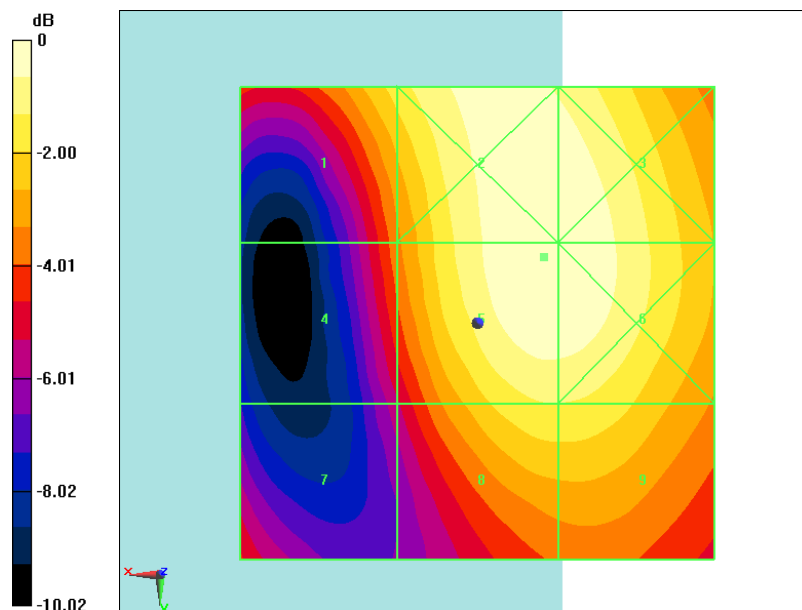
Applied MIF = -1.64 dB

RF audio interference level = 27.71 dBV/m

Emission category: M4

MIF scaled E-field

Grid 1 M4 26.06 dBV/m	Grid 2 M4 27.7 dBV/m	Grid 3 M4 27.67 dBV/m
Grid 4 M4 24.18 dBV/m	Grid 5 M4 27.71 dBV/m	Grid 6 M4 27.68 dBV/m
Grid 7 M4 23.18 dBV/m	Grid 8 M4 26.37 dBV/m	Grid 9 M4 26.37 dBV/m



0 dB = 24.29 V/m = 27.71 dBV/m

Fig B.41 HAC RF E-Field LTE Band41 64QAM CH41490

HAC RF E-Field LTE Band41 64QAM CH41055

Date: 2018-12-1

Electronics: DAE4 Sn1555

Medium: Air

Medium parameters used: $\sigma = 0$ mho/m, $\epsilon_r = 1$; $\rho = 1000$ kg/m³

Ambient Temperature: 22.0°C

Communication System: LTE Band41; Frequency: 2636.5 MHz; Duty Cycle: 1:1.58

Probe: ER3DV6 - SN2272;ConvF(1, 1, 1)

E Scan - ER3DV6 - 2011: 15 mm from Probe Center to the Device 2/Hearing Aid

Compatibility Test (101x101x1): Interpolated grid: dx=0.5000 mm, dy=0.5000 mm

Device Reference Point: 0, 0, -6.3 mm

Reference Value = 33.42 V/m; Power Drift = 0.02 dB

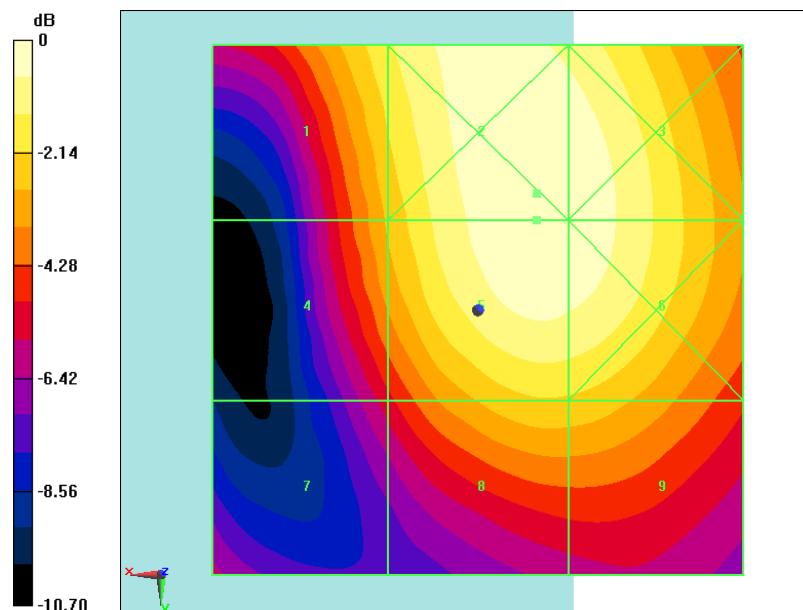
Applied MIF = -1.58 dB

RF audio interference level = 27.89 dBV/m

Emission category: M4

MIF scaled E-field

Grid 1 M4 26.37 dBV/m	Grid 2 M4 27.92 dBV/m	Grid 3 M4 27.78 dBV/m
Grid 4 M4 25.21 dBV/m	Grid 5 M4 27.89 dBV/m	Grid 6 M4 27.77 dBV/m
Grid 7 M4 22.68 dBV/m	Grid 8 M4 25.74 dBV/m	Grid 9 M4 25.68 dBV/m



0 dB = 24.90 V/m = 27.92 dBV/m

Fig B.42 HAC RF E-Field LTE Band41 64QAM CH41055

HAC RF E-Field LTE Band41 64QAM CH40620

Date: 2018-12-1

Electronics: DAE4 Sn1555

Medium: Air

Medium parameters used: $\sigma = 0$ mho/m, $\epsilon_r = 1$; $\rho = 1000$ kg/m³

Ambient Temperature: 22.0°C

Communication System: LTE Band41; Frequency: 2593 MHz; Duty Cycle: 1:1.58

Probe: ER3DV6 - SN2272;ConvF(1, 1, 1)

E Scan - ER3DV6 - 2011: 15 mm from Probe Center to the Device 3/Hearing Aid

Compatibility Test (101x101x1): Interpolated grid: dx=0.5000 mm, dy=0.5000 mm

Device Reference Point: 0, 0, -6.3 mm

Reference Value = 28.10 V/m; Power Drift = -0.00 dB

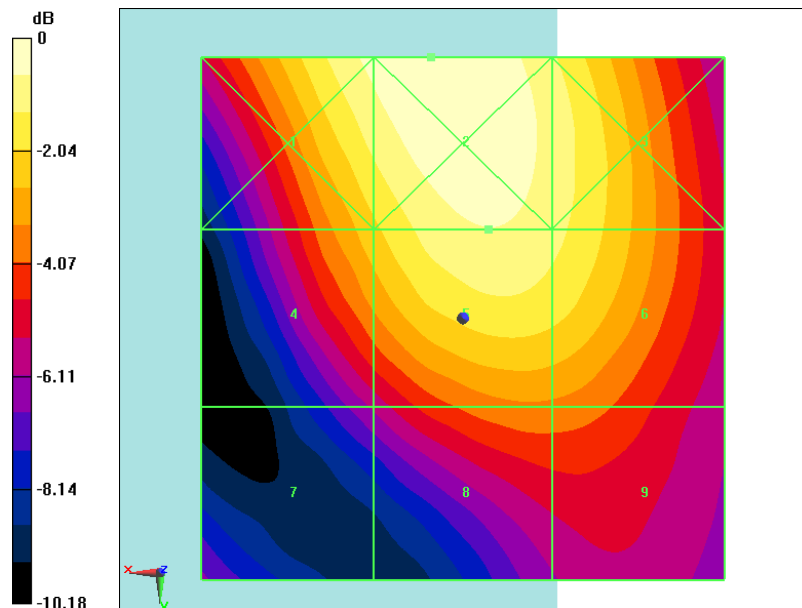
Applied MIF = -1.35 dB

RF audio interference level = 26.78 dBV/m

Emission category: M4

MIF scaled E-field

Grid 1 M4 27.03 dBV/m	Grid 2 M4 27.47 dBV/m	Grid 3 M4 26.57 dBV/m
Grid 4 M4 25.28 dBV/m	Grid 5 M4 26.78 dBV/m	Grid 6 M4 26.35 dBV/m
Grid 7 M4 21.54 dBV/m	Grid 8 M4 23.98 dBV/m	Grid 9 M4 23.93 dBV/m



0 dB = 23.64 V/m = 27.47 dBV/m

Fig B.43 HAC RF E-Field LTE Band41 64QAM CH40620

HAC RF E-Field LTE Band41 64QAM CH40185

Date: 2018-12-1

Electronics: DAE4 Sn1555

Medium: Air

Medium parameters used: $\sigma = 0$ mho/m, $\epsilon_r = 1$; $\rho = 1000$ kg/m³

Ambient Temperature: 22.0°C

Communication System: LTE Band41; Frequency: 2549.5 MHz; Duty Cycle: 1:1.58

Probe: ER3DV6 - SN2272;ConvF(1, 1, 1)

E Scan - ER3DV6 - 2011: 15 mm from Probe Center to the Device 3 3/Hearing Aid

Compatibility Test (101x101x1): Interpolated grid: dx=0.5000 mm, dy=0.5000 mm

Device Reference Point: 0, 0, -6.3 mm

Reference Value = 21.92 V/m; Power Drift = -0.06 dB

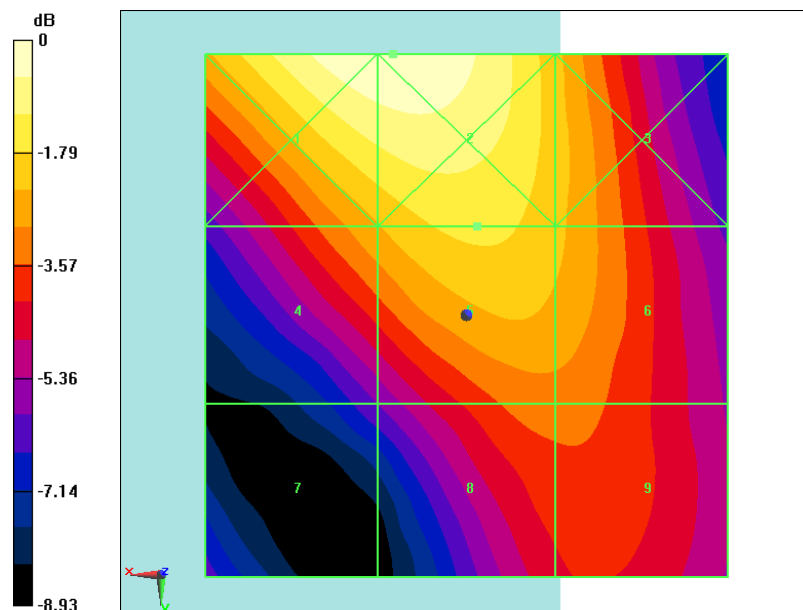
Applied MIF = -1.38 dB

RF audio interference level = 24.49 dBV/m

Emission category: M4

MIF scaled E-field

Grid 1 M4 26.11 dBV/m	Grid 2 M4 26.13 dBV/m	Grid 3 M4 24.05 dBV/m
Grid 4 M4 23.71 dBV/m	Grid 5 M4 24.49 dBV/m	Grid 6 M4 23.92 dBV/m
Grid 7 M4 20.2 dBV/m	Grid 8 M4 22.86 dBV/m	Grid 9 M4 22.86 dBV/m



0 dB = 20.24 V/m = 26.12 dBV/m

Fig B.44 HAC RF E-Field LTE Band41 64QAM CH40185

HAC RF E-Field LTE Band41 64QAM CH39750

Date: 2018-12-1

Electronics: DAE4 Sn1555

Medium: Air

Medium parameters used: $\sigma = 0$ mho/m, $\epsilon_r = 1$; $\rho = 1000$ kg/m³

Ambient Temperature: 22.0°C

Communication System: LTE Band41; Frequency: 2506 MHz; Duty Cycle: 1:1.58

Probe: ER3DV6 - SN2272;ConvF(1, 1, 1)

E Scan - ER3DV6 - 2011: 15 mm from Probe Center to the Device 3 2/Hearing Aid

Compatibility Test (101x101x1): Interpolated grid: dx=0.5000 mm, dy=0.5000 mm

Device Reference Point: 0, 0, -6.3 mm

Reference Value = 18.60 V/m; Power Drift = 0.06 dB

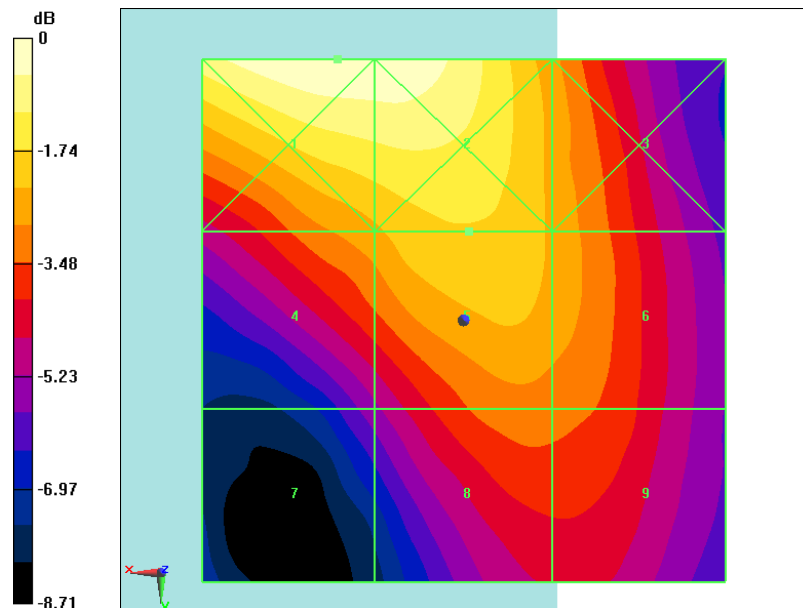
Applied MIF = -1.54 dB

RF audio interference level = 22.87 dBV/m

Emission category: M4

MIF scaled E-field

Grid 1 M4 24.64 dBV/m	Grid 2 M4 24.59 dBV/m	Grid 3 M4 22.21 dBV/m
Grid 4 M4 22.21 dBV/m	Grid 5 M4 22.87 dBV/m	Grid 6 M4 22.22 dBV/m
Grid 7 M4 19.27 dBV/m	Grid 8 M4 21.52 dBV/m	Grid 9 M4 21.44 dBV/m



0 dB = 17.07 V/m = 24.64 dBV/m

Fig B.45 HAC RF E-Field LTE Band41 64QAM CH39750

ANNEX C SYSTEM VALIDATION RESULT

E SCAN of Dipole 835 MHz

Date: 2018-12-1

Electronics: DAE4 Sn1555

Medium: Air

Medium parameters used: $\sigma = 0$ mho/m, $\epsilon_r = 1$; $\rho = 1000$ kg/m³

Communication System: CW; Frequency: 835 MHz; Duty Cycle: 1:1

Probe: ER3DV6 - SN2272;ConvF(1, 1, 1)

E Scan - measurement distance from the probe sensor center to CD835 Dipole = 15mm/Hearing Aid Compatibility Test (41x361x1): Interpolated grid: dx=0.5000 mm, dy=0.5000 mm

Device Reference Point: 0, 0, -6.3 mm

Reference Value = 131.7 V/m; Power Drift = -0.02 dB

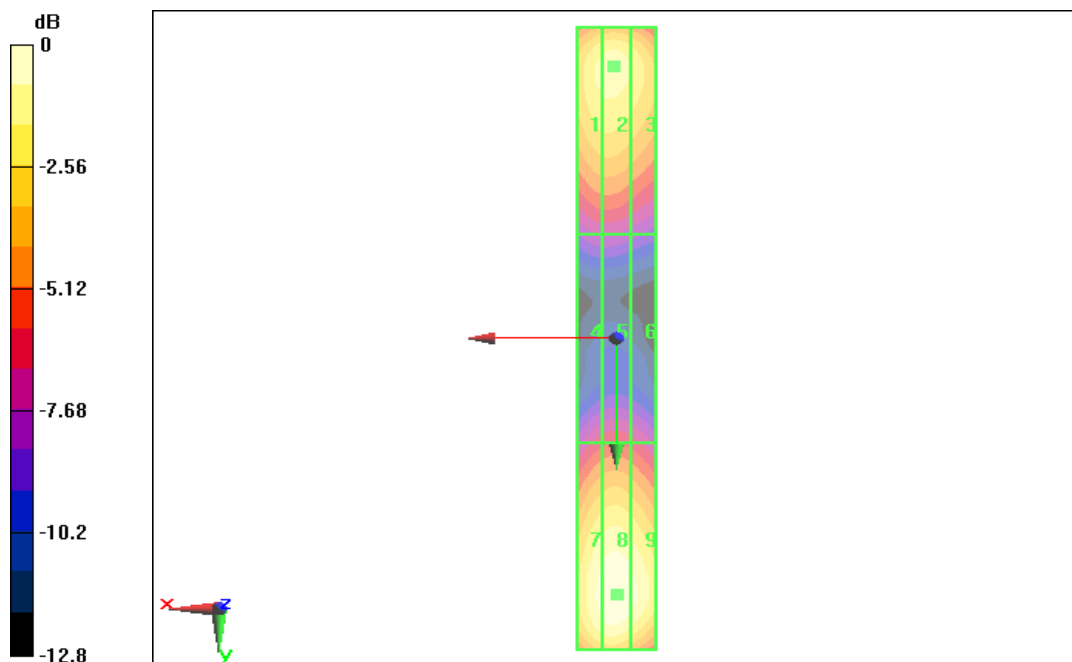
Applied MIF = 0.00 dB

RF audio interference level = 40.75 dBV/m

Emission category: M3

MIF scaled E-field

Grid 1 M3 40.32 dBV/m	Grid 2 M3 40.75 dBV/m	Grid 3 M3 40.67 dBV/m
Grid 4 M4 35.53 dBV/m	Grid 5 M4 35.88 dBV/m	Grid 6 M4 35.85 dBV/m
Grid 7 M3 40.51 dBV/m	Grid 8 M3 40.86 dBV/m	Grid 9 M3 40.79 dBV/m



0 dB = 40.75 dBV/m

E SCAN of Dipole 1880 MHz

Date: 2018-12-1

Electronics: DAE4 Sn1555

Medium: Air

Medium parameters used: $\sigma = 0$ mho/m, $\epsilon_r = 1$; $\rho = 1000$ kg/m³

Communication System: CW; Frequency: 1880 MHz; Duty Cycle: 1:1

Probe: ER3DV6 - SN2272;ConvF(1, 1, 1)

E Scan - measurement distance from the probe sensor center to CD1880 Dipole = 15mm/Hearing Aid Compatibility Test (41x181x1): Interpolated grid: dx=0.5000 mm, dy=0.5000 mm

Device Reference Point: 0, 0, -6.3 mm

Reference Value = 155.5 V/m; Power Drift = 0.01 dB

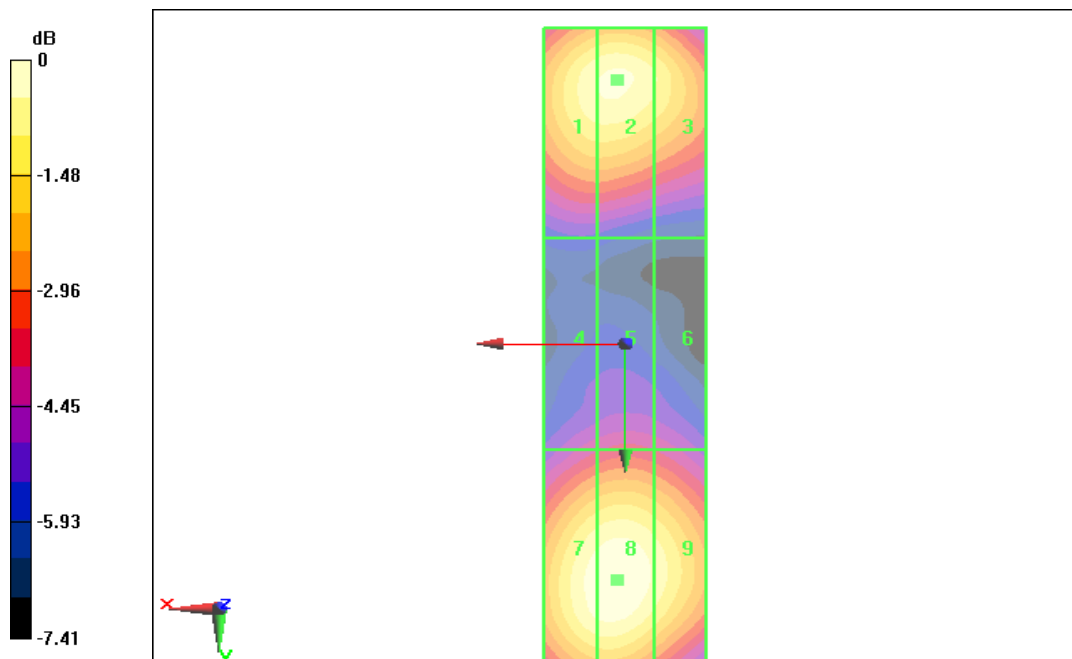
Applied MIF = 0.00 dB

RF audio interference level = 39.22 dBV/m

Emission category: M2

MIF scaled E-field

Grid 1 M2 38.89 dBV/m	Grid 2 M2 39.22 dBV/m	Grid 3 M2 39.11 dBV/m
Grid 4 M2 36.3 dBV/m	Grid 5 M2 36.46 dBV/m	Grid 6 M2 36.42 dBV/m
Grid 7 M2 38.91 dBV/m	Grid 8 M2 39.15 dBV/m	Grid 9 M2 39.05 dBV/m



0 dB = 39.22 dBV/m

E SCAN of Dipole 2600 MHz

Date: 2018-12-1

Electronics: DAE4 Sn1555

Medium: Air

Medium parameters used: $\sigma = 0$ mho/m, $\epsilon_r = 1$; $\rho = 1000$ kg/m³

Communication System: CW; Frequency: 2600 MHz; Duty Cycle: 1:1

Probe: ER3DV6 - SN2272;ConvF(1, 1, 1)

E Scan - measurement distance from the probe sensor center to CD2600 Dipole = 15mm/Hearing Aid Compatibility Test (41x181x1): Interpolated grid: dx=0.5000 mm, dy=0.5000 mm

Device Reference Point: 0, 0, -6.3 mm

Reference Value = 67.88 V/m; Power Drift = -0.01 dB

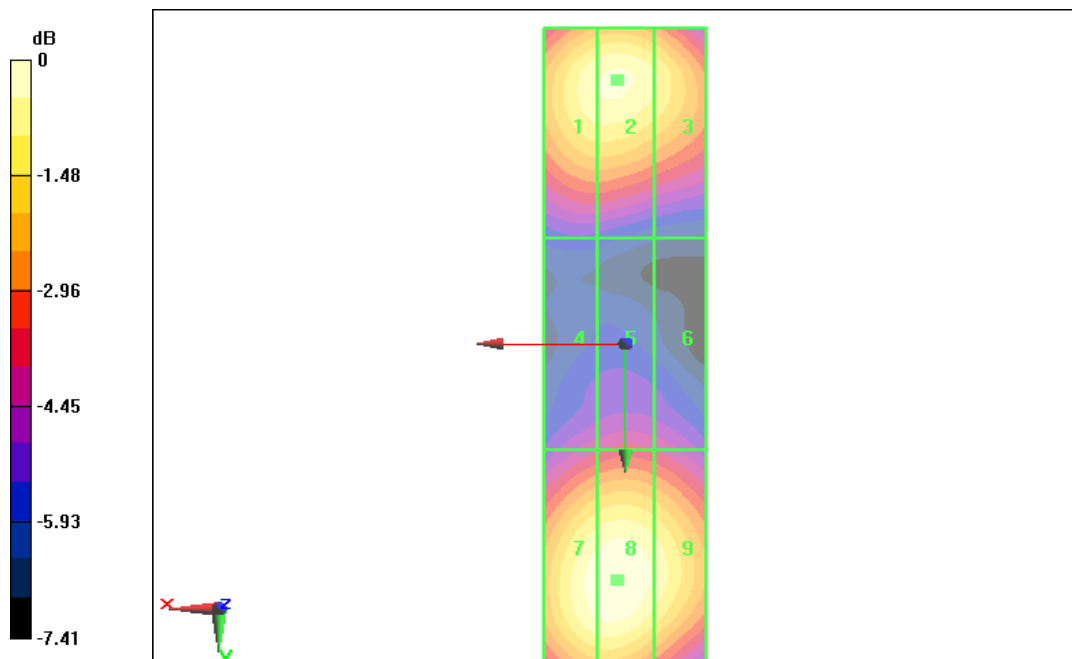
Applied MIF = 0.00 dB

RF audio interference level = 38.84 dBV/m

Emission category: M2

MIF scaled E-field

Grid 1M2 38.5 dBV/m	Grid 2M2 38.74 dBV/m	Grid 3M2 38.65 dBV/m
Grid 4M2 38.02 dBV/m	Grid 5M2 38.24 dBV/m	Grid 6M2 38.19 dBV/m
Grid 7M2 38.62 dBV/m	Grid 8M2 38.84 dBV/m	Grid 9M2 38.75 dBV/m



0 dB = 38.84 dBV/m

ANNEX D PROBE CALIBRATION CERTIFICATE

E_Probe ER3DV6

Calibration Laboratory of
Schmid & Partner
Engineering AG
Zeughausstrasse 43, 8004 Zurich, Switzerland



S Schweizerischer Kalibrierdienst
C Service suisse d'étalonnage
S Servizio svizzero di taratura
Swiss Calibration Service

Accredited by the Swiss Accreditation Service (SAS)
The Swiss Accreditation Service is one of the signatories to the EA
Multilateral Agreement for the recognition of calibration certificates

Accreditation No.: **SCS 0108**

Client **CTTL (Auden)**

Certificate No: **ER3-2272_Dec17**

CALIBRATION CERTIFICATE

Object **ER3DV6 - SN:2272**

Calibration procedure(s) **QA CAL-02.v8, QA CAL-25.v6
Calibration procedure for E-field probes optimized for close near field
evaluations in air**


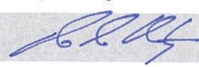
Calibration date: **December 19, 2017**

This calibration certificate documents the traceability to national standards, which realize the physical units of measurements (SI).
The measurements and the uncertainties with confidence probability are given on the following pages and are part of the certificate.

All calibrations have been conducted in the closed laboratory facility: environment temperature (22 ± 3)°C and humidity < 70%.

Calibration Equipment used (M&TE critical for calibration)

Primary Standards	ID	Cal Date (Certificate No.)	Scheduled Calibration
Power meter NRP	SN: 104778	04-Apr-17 (No. 217-02521/02522)	Apr-18
Power sensor NRP-Z91	SN: 103244	04-Apr-17 (No. 217-02521)	Apr-18
Power sensor NRP-Z91	SN: 103245	04-Apr-17 (No. 217-02525)	Apr-18
Reference 20 dB Attenuator	SN: S5277 (20x)	07-Apr-17 (No. 217-02528)	Apr-18
Reference Probe ER3DV6	SN: 2328	10-Oct-17 (No. ER3-2328_Oct17)	Oct-18
DAE4	SN: 789	2-Aug-17 (No. DAE4-789_Aug17)	Aug-18
Secondary Standards	ID	Check Date (in house)	Scheduled Check
Power meter E4419B	SN: GB41293874	06-Apr-16 (in house check Jun-16)	In house check: Jun-18
Power sensor E4412A	SN: MY41498087	06-Apr-16 (in house check Jun-16)	In house check: Jun-18
Power sensor E4412A	SN: 000110210	06-Apr-16 (in house check Jun-16)	In house check: Jun-18
RF generator HP 8648C	SN: US3642U01700	04-Aug-99 (in house check Jun-16)	In house check: Jun-18
Network Analyzer HP 8753E	SN: US37390585	18-Oct-01 (in house check Oct-17)	In house check: Oct-18

Calibrated by:	Name Jeton Kastrati	Function Laboratory Technician	Signature 
Approved by:	Name Katja Pokovic	Function Technical Manager	Signature 
Issued: December 20, 2017			
This calibration certificate shall not be reproduced except in full without written approval of the laboratory.			

Calibration Laboratory of
Schmid & Partner
Engineering AG
Zeughausstrasse 43, 8004 Zurich, Switzerland



S Schweizerischer Kalibrierdienst
C Service suisse d'étalonnage
S Servizio svizzero di taratura
S Swiss Calibration Service

Accredited by the Swiss Accreditation Service (SAS)
The Swiss Accreditation Service is one of the signatories to the EA
Multilateral Agreement for the recognition of calibration certificates

Accreditation No.: **SCS 0108**

Glossary:

NORM _{x,y,z}	sensitivity in free space
DCP	diode compression point
CF	crest factor (1/duty_cycle) of the RF signal
A, B, C, D	modulation dependent linearization parameters
Polarization φ	φ rotation around probe axis
Polarization ϑ	ϑ rotation around an axis that is in the plane normal to probe axis (at measurement center), i.e., $\vartheta = 0$ is normal to probe axis
Connector Angle	information used in DASY system to align probe sensor X to the robot coordinate system

Calibration is Performed According to the Following Standards:

- a) IEEE Std 1309-2005, "IEEE Standard for calibration of electromagnetic field sensors and probes, excluding antennas, from 9 kHz to 40 GHz", December 2005
- b) CTIA Test Plan for Hearing Aid Compatibility, Rev 3.0, November 2013

Methods Applied and Interpretation of Parameters:

- **NORM_{x,y,z}**: Assessed for E-field polarization $\vartheta = 0$ for XY sensors and $\vartheta = 90$ for Z sensor ($f \leq 900$ MHz in TEM-cell; $f > 1800$ MHz: R22 waveguide).
- **NORM(f)_{x,y,z} = NORM_{x,y,z} * frequency_response** (see Frequency Response Chart).
- **DCP_{x,y,z}**: DCP are numerical linearization parameters assessed based on the data of power sweep with CW signal (no uncertainty required). DCP does not depend on frequency nor media.
- **PAR**: PAR is the Peak to Average Ratio that is not calibrated but determined based on the signal characteristics
- **A_{x,y,z}; B_{x,y,z}; C_{x,y,z}; D_{x,y,z}; VR_{x,y,z}**: A, B, C, D are numerical linearization parameters assessed based on the data of power sweep for specific modulation signal. The parameters do not depend on frequency nor media. VR is the maximum calibration range expressed in RMS voltage across the diode.
- **Spherical isotropy (3D deviation from isotropy)**: in a locally homogeneous field realized using an open waveguide setup.
- **Sensor Offset**: The sensor offset corresponds to the offset of virtual measurement center from the probe tip (on probe axis). No tolerance required.
- **Connector Angle**: The angle is assessed using the information gained by determining the NORM_x (no uncertainty required).



ER3DV6 – SN:2272

December 19, 2017

Probe ER3DV6

SN:2272

Manufactured: November 29, 2001
Calibrated: December 19, 2017

Calibrated for DASY/EASY Systems
(Note: non-compatible with DASY2 system!)



ER3DV6 – SN:2272

December 19, 2017

DASY/EASY - Parameters of Probe: ER3DV6 - SN:2272

Basic Calibration Parameters

	Sensor X	Sensor Y	Sensor Z	Unc (k=2)
Norm ($\mu\text{V}/(\text{V}/\text{m})^2$)	1.60	1.67	1.72	$\pm 10.1\%$
DCP (mV) ^B	101.0	97.8	100.7	

Modulation Calibration Parameters

UID	Communication System Name		A dB	B dB $\sqrt{\mu\text{V}}$	C	D dB	VR mV	Unc ^E (k=2)
0	CW	X	0.0	0.0	1.0	0.00	200.2	$\pm 3.5\%$
		Y	0.0	0.0	1.0		165.8	
		Z	0.0	0.0	1.0		197.0	

Note: For details on UID parameters see Appendix.

Sensor Model Parameters

	C1 fF	C2 fF	α V^{-1}	T1 $\text{ms}\cdot\text{V}^{-2}$	T2 $\text{ms}\cdot\text{V}^{-1}$	T3 ms	T4 V^{-2}	T5 V^{-1}	T6
X	94.34	448.4	35.94	25.97	1.333	5.10	0.00	0.662	1.014
Y	100.1	483.8	36.93	26.47	1.401	5.10	0.00	0.669	1.019
Z	83.01	396.9	36.42	29.84	3.892	5.10	0.00	0.874	1.016

The reported uncertainty of measurement is stated as the standard uncertainty of measurement multiplied by the coverage factor $k=2$, which for a normal distribution corresponds to a coverage probability of approximately 95%.

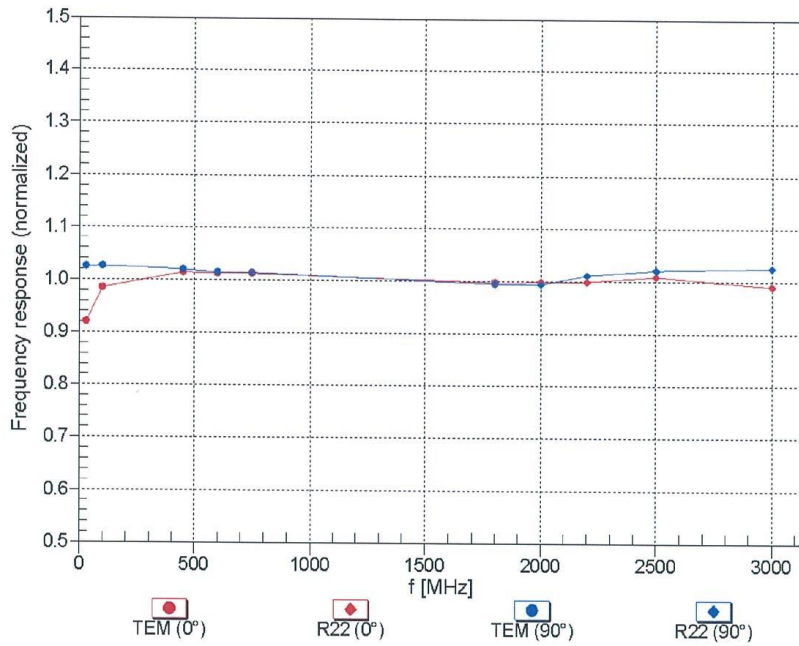
^B Numerical linearization parameter: uncertainty not required.

^E Uncertainty is determined using the max. deviation from linear response applying rectangular distribution and is expressed for the square of the field value.

ER3DV6 – SN:2272

December 19, 2017

Frequency Response of E-Field (TEM-Cell:ifi110 EXX, Waveguide: R22)

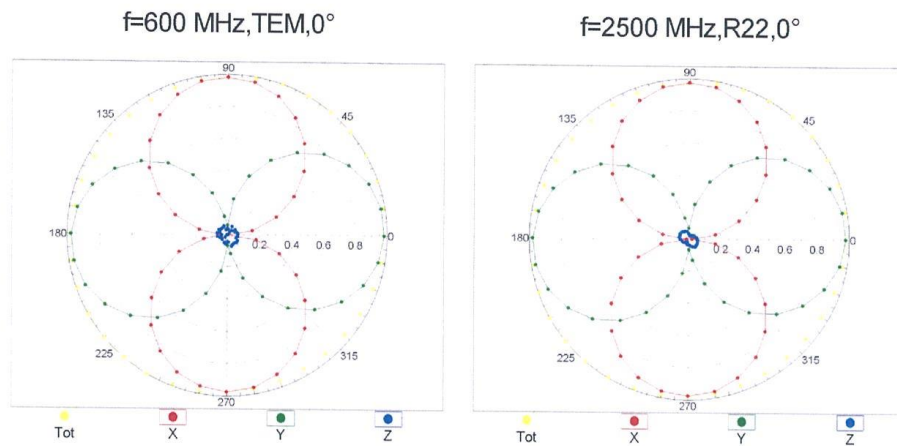


Uncertainty of Frequency Response of E-field: $\pm 6.3\%$ (k=2)

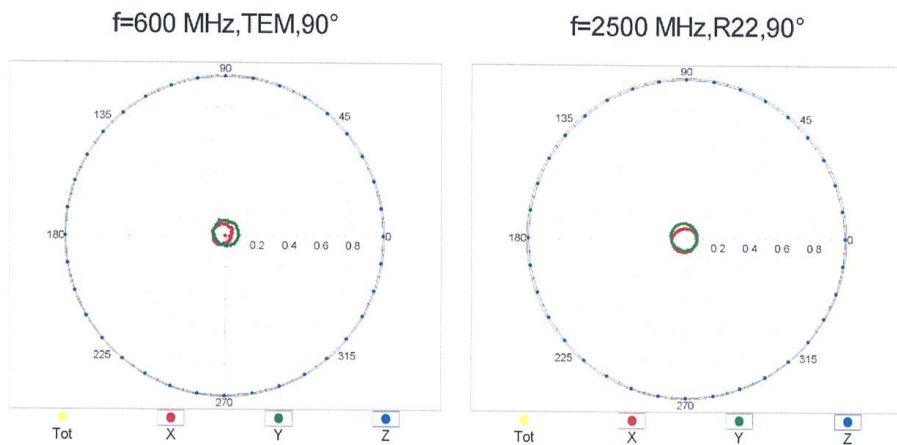
ER3DV6 – SN:2272

December 19, 2017

Receiving Pattern (ϕ), $\vartheta = 0^\circ$



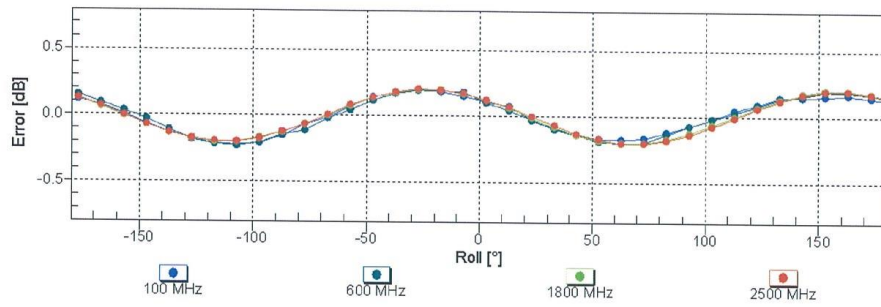
Receiving Pattern (ϕ), $\vartheta = 90^\circ$



ER3DV6 – SN:2272

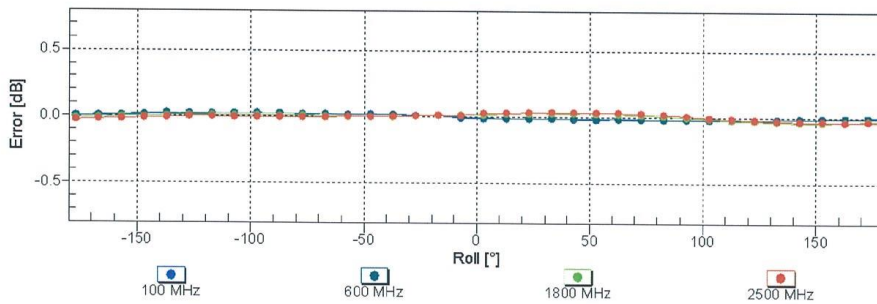
December 19, 2017

Receiving Pattern (ϕ), $\vartheta = 0^\circ$



Uncertainty of Axial Isotropy Assessment: $\pm 0.5\%$ (k=2)

Receiving Pattern (ϕ), $\vartheta = 90^\circ$

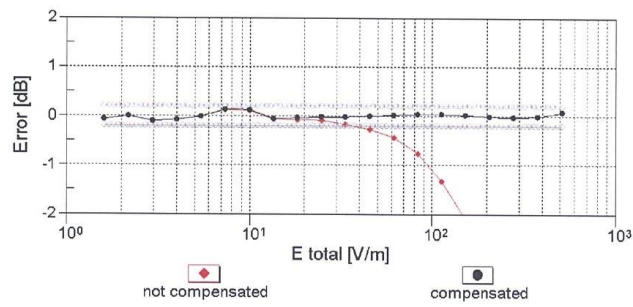
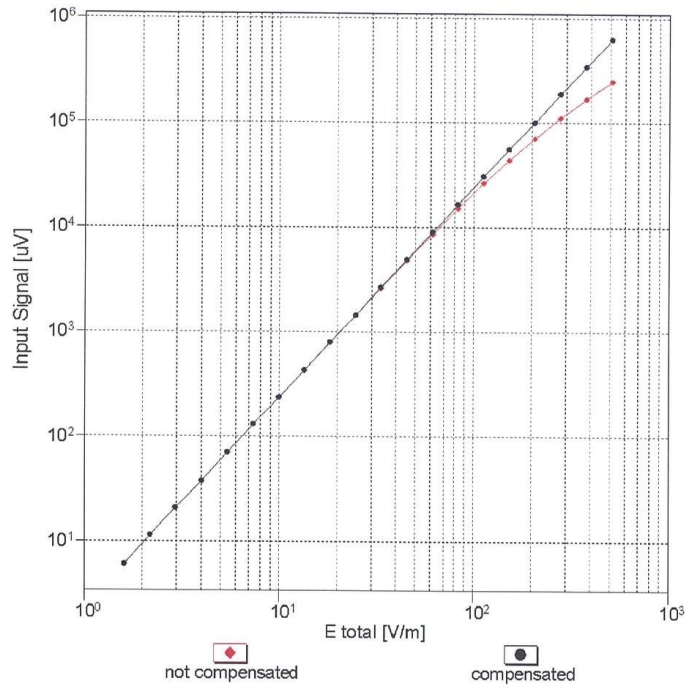


Uncertainty of Axial Isotropy Assessment: $\pm 0.5\%$ (k=2)

ER3DV6 – SN:2272

December 19, 2017

Dynamic Range f(E-field) (TEM cell , f = 900 MHz)

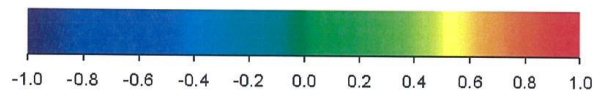
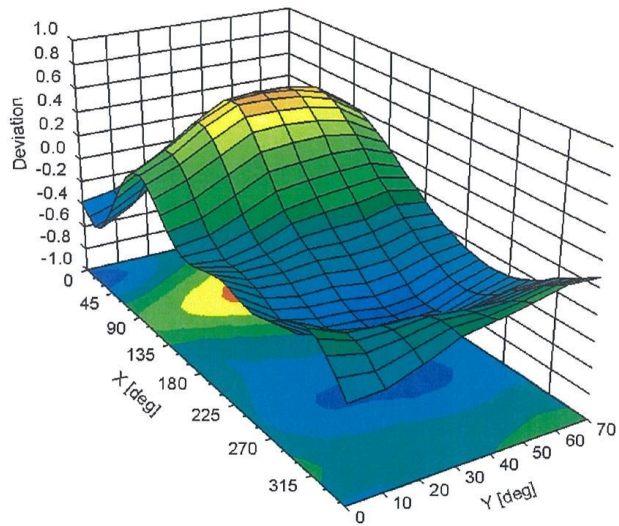


Uncertainty of Linearity Assessment: $\pm 0.6\%$ (k=2)

ER3DV6 – SN:2272

December 19, 2017

Deviation from Isotropy in Air Error (ϕ, θ), $f = 900$ MHz



Uncertainty of Spherical Isotropy Assessment: $\pm 2.6\%$ ($k=2$)



ER3DV6 – SN:2272

December 19, 2017

DASY/EASY - Parameters of Probe: ER3DV6 - SN:2272

Other Probe Parameters

Sensor Arrangement	Rectangular
Connector Angle (°)	112.9
Mechanical Surface Detection Mode	enabled
Optical Surface Detection Mode	disabled
Probe Overall Length	337 mm
Probe Body Diameter	10 mm
Tip Length	10 mm
Tip Diameter	8 mm
Probe Tip to Sensor X Calibration Point	2.5 mm
Probe Tip to Sensor Y Calibration Point	2.5 mm
Probe Tip to Sensor Z Calibration Point	2.5 mm

ANNEX E DIPOLE CALIBRATION CERTIFICATE

Dipole 835 MHz

Calibration Laboratory of
Schmid & Partner
Engineering AG
Zeughausstrasse 43, 8004 Zurich, Switzerland




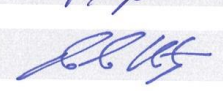
S Schweizerischer Kalibrierdienst
C Service suisse d'étalonnage
S Servizio svizzero di taratura
S Swiss Calibration Service

Accredited by the Swiss Accreditation Service (SAS)
The Swiss Accreditation Service is one of the signatories to the EA
Multilateral Agreement for the recognition of calibration certificates

Accreditation No.: SCS 0108

Client **CTTL (Auden)**

Certificate No: **CD835V3-1023_Aug18**

CALIBRATION CERTIFICATE			
Object	CD835V3 - SN: 1023		
Calibration procedure(s)	QA CAL-20.v6 Calibration procedure for dipoles in air		
Calibration date:	August 28, 2018		
This calibration certificate documents the traceability to national standards, which realize the physical units of measurements (SI). The measurements and the uncertainties with confidence probability are given on the following pages and are part of the certificate.			
All calibrations have been conducted in the closed laboratory facility: environment temperature (22 ± 3)°C and humidity < 70%.			
Calibration Equipment used (M&TE critical for calibration)			
Primary Standards	ID #	Cal Date (Certificate No.)	Scheduled Calibration
Power meter NRP	SN: 104778	04-Apr-18 (No. 217-02672/02673)	Apr-19
Power sensor NRP-Z91	SN: 103244	04-Apr-18 (No. 217-02672)	Apr-19
Power sensor NRP-Z91	SN: 103245	04-Apr-18 (No. 217-02673)	Apr-19
Reference 20 dB Attenuator	SN: 5058 (20k)	04-Apr-18 (No. 217-02682)	Apr-19
Type-N mismatch combination	SN: 5047.2 / 06327	04-Apr-18 (No. 217-02683)	Apr-19
Probe EF3DV3	SN: 4013	05-Mar-18 (No. EF3-4013_Mar18)	Mar-19
DAE4	SN: 781	17-Jan-18 (No. DAE4-781_Jan18)	Jan-19
Secondary Standards	ID #	Check Date (in house)	Scheduled Check
Power meter Agilent 4419B	SN: GB42420191	09-Oct-09 (in house check Oct-17)	In house check: Oct-20
Power sensor HP E4412A	SN: US38485102	05-Jan-10 (in house check Oct-17)	In house check: Oct-20
Power sensor HP 8482A	SN: US37295597	09-Oct-09 (in house check Oct-17)	In house check: Oct-20
RF generator R&S SMT-06	SN: 832283/011	27-Aug-12 (in house check Oct-17)	In house check: Oct-20
Network Analyzer Agilent E8358A	SN: US41080477	31-Mar-14 (in house check Oct-17)	In house check: Oct-18
Calibrated by:	Name Leif Klysner	Function Laboratory Technician	Signature 
Approved by:	Name Katja Pokovic	Function Technical Manager	Signature 
This calibration certificate shall not be reproduced except in full without written approval of the laboratory.			Issued: August 28, 2018

**Calibration Laboratory of
Schmid & Partner
Engineering AG**
Zeughausstrasse 43, 8004 Zurich, Switzerland



S Schweizerischer Kalibrierdienst
C Service suisse d'étalonnage
S Servizio svizzero di taratura
Swiss Calibration Service

Accredited by the Swiss Accreditation Service (SAS)
The Swiss Accreditation Service is one of the signatories to the EA
Multilateral Agreement for the recognition of calibration certificates

Accreditation No.: **SCS 0108**

References

- [1] ANSI-C63.19-2011
American National Standard, Methods of Measurement of Compatibility between Wireless Communications Devices and Hearing Aids.

Methods Applied and Interpretation of Parameters:

- **Coordinate System:** y-axis is in the direction of the dipole arms. z-axis is from the basis of the antenna (mounted on the table) towards its feed point between the two dipole arms. x-axis is normal to the other axes. In coincidence with the standards [1], the measurement planes (probe sensor center) are selected to be at a distance of 15 mm above the top metal edge of the dipole arms.
- **Measurement Conditions:** Further details are available from the hardcopies at the end of the certificate. All figures stated in the certificate are valid at the frequency indicated. The forward power to the dipole connector is set with a calibrated power meter connected and monitored with an auxiliary power meter connected to a directional coupler. While the dipole under test is connected, the forward power is adjusted to the same level.
- **Antenna Positioning:** The dipole is mounted on a HAC Test Arch phantom using the matching dipole positioner with the arms horizontal and the feeding cable coming from the floor. The measurements are performed in a shielded room with absorbers around the setup to reduce the reflections. It is verified before the mounting of the dipole under the Test Arch phantom, that its arms are perfectly in a line. It is installed on the HAC dipole positioner with its arms parallel below the dielectric reference wire and able to move elastically in vertical direction without changing its relative position to the top center of the Test Arch phantom. The vertical distance to the probe is adjusted after dipole mounting with a DASY5 Surface Check job. Before the measurement, the distance between phantom surface and probe tip is verified. The proper measurement distance is selected by choosing the matching section of the HAC Test Arch phantom with the proper device reference point (upper surface of the dipole) and the matching grid reference point (tip of the probe) considering the probe sensor offset. The vertical distance to the probe is essential for the accuracy.
- **Feed Point Impedance and Return Loss:** These parameters are measured using a HP 8753E Vector Network Analyzer. The impedance is specified at the SMA connector of the dipole. The influence of reflections was eliminating by applying the averaging function while moving the dipole in the air, at least 70cm away from any obstacles.
- **E-field distribution:** E field is measured in the x-y-plane with an isotropic ER3D-field probe with 100 mW forward power to the antenna feed point. In accordance with [1], the scan area is 20mm wide, its length exceeds the dipole arm length (180 or 90mm). The sensor center is 15 mm (in z) above the metal top of the dipole arms. Two 3D maxima are available near the end of the dipole arms. Assuming the dipole arms are perfectly in one line, the average of these two maxima (in subgrid 2 and subgrid 8) is determined to compensate for any non-parallelity to the measurement plane as well as the sensor displacement. The E-field value stated as calibration value represents the maximum of the interpolated 3D-E-field, in the plane above the dipole surface.

The reported uncertainty of measurement is stated as the standard uncertainty of measurement multiplied by the coverage factor $k=2$, which for a normal distribution corresponds to a coverage probability of approximately 95%.