



TEST REPORT

APPLICANT : WIKO SAS
PRODUCT NAME : Smart phone
MODEL NAME : W-V770
BRAND NAME : WIKO
FCC ID : 2AM86W-V770
STANDARD(S) : FCC 47CFR Part 2(2.1093)
IEEE 1528-2013
RECEIPT DATE : 2021-09-13
TEST DATE : 2021-09-13 to 2021-09-30
ISSUE DATE : 2021-10-08

Edited by : Liang Yumei
Liang Yumei (Rapporteur)
Approved by: Shen Junsheng
Shen Junsheng (Supervisor)

NOTE: This document is issued by Shenzhen Morlab Communications Technology Co., Ltd., the test report shall not be reproduced except in full without prior written permission of the company. The test results apply only to the particular sample(s) tested and to the specific tests carried out which is available on request for validation and information confirmed at our website.





DIRECTORY

- 1. SAR Results Summary5
- 2. Technical Information6
 - 2.1. Applicant and Manufacturer Information6
 - 2.2. Equipment Under Test (EUT) Description6
 - 2.3. Environment of Test Site/Conditions8
- 3. Specific Absorption Rate (SAR)9
 - 3.1. Introduction9
 - 3.2. SAR Definition9
- 4. RF Exposure Limits10
 - 4.1. Uncontrolled Environment10
 - 4.2. Controlled Environment10
- 5. Applied Reference Documents11
- 6. SAR Measurement System12
 - 6.1. E-Field Probe13
 - 6.2. Data Acquisition Electronics (DAE)14
 - 6.3. Robot14
 - 6.4. Measurement Server15
 - 6.5. Light Beam Unit15
 - 6.6. Phantom15
 - 6.7. Device Holder16
 - 6.8. Data Storage and Evaluation17
 - 6.9. Test Equipment List19
- 7. Tissue Simulating Liquids21
- 8. SAR System Verification23
 - 8.1. Purpose of System Performance check23
 - 8.2. System Setup23



- 8.3. Validation Results..... 24
- 9. EUT Testing Position 26
 - 9.1. Handset Reference Points..... 26
 - 9.2. Positioning for Cheek / Touch 27
 - 9.3. Positioning for Ear / 15° Tilt 28
 - 9.4. SAR Evaluations near the Mouth/Jaw Regions of the SAM 28
 - 9.5. Body-worn Configurations..... 29
 - 9.6. Hotspot Mode Exposure Position Conditions 29
- 10. Measurement Procedures 30
 - 10.1. Spatial Peak SAR Evaluation 30
 - 10.2. Power Reference Measurement..... 31
 - 10.3. Area Scan Procedures 31
 - 10.4. Zoom Scan Procedures 31
 - 10.5. SAR Averaged Methods..... 32
 - 10.6. Power Drift Monitoring..... 32
- 11. SAR Test Procedure..... 33
 - 11.1. General Scan Requirements 33
 - 11.2. Test Procedure..... 34
 - 11.3. Description of Interpolation/Extrapolation Scheme 34
 - 11.4. Wireless Router 34
- 12. SAR Test Configuration..... 36
- 13. Conducted RF Output Power..... 46
- 14. Hot-Spot Mode Evaluation Procedure..... 47
- 15. Block Diagram of the Tests to be Performed 48
 - 15.1. Head 48
 - 15.2. Body 49
- 16. Test Results List..... 50
 - 16.1. Test Guidance 50



16.2. Head SAR Data.....52

16.3. Body SAR Data 60

16.4. Repeated SAR Assessment 68

16.5. Extremity SAR Assessment 69

17. Simultaneous Transmission Evaluation 70

17.1. Simultaneous Transmission Consideration 70

17.2. Simultaneous Transmission Analysis 71

18. Uncertainty Assessment 76

Annex A General Information 79

Annex B Test Setup Photos

Annex C Plots of System Performance Check

Annex D Plots of Maximum SAR Test Results

Annex E Conducted Power

Annex F DASYS Calibration Certificate

Changed History		
Version	Date	Reason for Change
1.0	2021-10-08	First edition



1. SAR Results Summary

The maximum results of Specific Absorption Rate (SAR) found during test as bellows:

<Highest Reported SAR Summary>

Frequency Band		Highest SAR Summary			
		Head (Gap 0mm)	Body-worn (Gap 10mm)	Hotspot (Gap 10mm)	Extremity (Gap 0mm)
		1g SAR (W/kg)			10g SAR (W/kg)
GSM	GSM850	0.459	0.393	0.393	N/A
	GSM1900	0.522	0.547	0.792	N/A
WCDMA	WCDMA Band II	0.589	0.551	0.630	N/A
	WCDMA Band IV	0.544	0.544	0.594	N/A
	WCDMA Band V	0.572	0.323	0.323	N/A
LTE	LTE Band 2	0.601	0.554	0.739	N/A
	LTE Band 5	0.450	0.277	0.277	N/A
	LTE Band 7	0.548	0.713	0.713	N/A
	LTE Band 26	0.439	0.255	0.255	N/A
	LTE Band 38	0.342	0.321	0.321	N/A
	LTE Band 40A	0.622	0.386	0.386	N/A
	LTE Band 40B	0.607	0.507	0.507	N/A
	LTE Band 41	0.407	0.314	0.314	N/A
WLAN	LTE Band 66/4	0.418	0.630	0.630	N/A
	2.4GHz WLAN	1.154	0.409	0.409	N/A
2.4GHz Band	Bluetooth	N/A	0.016	N/A	N/A

Max Scaled SAR _{1g} (W/Kg):	Head:	1.154 W/kg	Limit(W/kg): 1.6 W/kg
	Body-worn:	0.713 W/kg	
	Hotspot:	0.792 W/kg	

Highest Simultaneous Transmission SAR _{1g} (W/Kg):	1.575 W/kg	Limit(W/kg): 1.6 W/kg
---	------------	-----------------------

Note:

1. This device is in compliance with Specific Absorption Rate (SAR) for general population or uncontrolled exposure limits (1.6W/kg as averaged over any 1 gram of tissue; specified in FCC 47 CFR part 2 (2.1093) and ANSI/IEEE C95.1-1992), and had been tested in accordance with the measurement methods and procedures specified in IEEE 1528-2013 and FCC KDB publications.
2. The FDD-LTE Band 4 is full covered by FDD-LTE Band 66, therefore only FDD-LTE Band 66 was



tested.

- When the test result is a critical value, we will use the measurement uncertainty give the judgment result based on the 95% risk level.

2. Technical Information

Note: Provide by applicant.

2.1. Applicant and Manufacturer Information

Applicant:	WIKO SAS
Applicant Address:	1, rue Capitaine Dessemond – 13007 Marseille – France.
Manufacturer:	WIKO SAS
Manufacturer Address:	1, rue Capitaine Dessemond – 13007 Marseille – France.

2.2. Equipment Under Test (EUT) Description

Product Name:	Smart phone
IMEI:	356599510001598 356599510004337
Hardware Version:	V1.0
Software Version:	W-V770-V01
Frequency Bands:	GSM 850: 824 MHz ~ 849MHz GSM 1900: 1850 MHz ~ 1910MHz WCDMA Band II: 1850 MHz ~ 1910MHz WCDMA Band IV: 1710 MHz ~ 1755 MHz WCDMA Band V: 824 MHz ~ 849MHz LTE Band 2: 1850 MHz ~ 1910 MHz LTE Band 4: 1710 MHz ~ 1755 MHz LTE Band 5: 824 MHz ~ 849 MHz LTE Band 7: 2500 MHz ~ 2570 MHz LTE Band 26: 814 MHz ~ 849 MHz LTE Band 38: 2570 MHz ~ 2620 MHz LTE Band 40A: 2305 MHz ~ 2315 MHz LTE Band 40B: 2350 MHz ~ 2360 MHz LTE Band 41: 2535 MHz ~ 2675 MHz LTE Band 66: 1710 MHz ~ 1780 MHz WLAN 2.4GHz: 2412 MHz ~ 2462 MHz



	Bluetooth: 2402 MHz ~ 2480 MHz	
Modulation Mode:	GSM/GPRS: GMSK, EDGE: 8PSK WCDMA: QPSK, 16QAM LTE: QPSK, 16QAM 802.11b: DSSS 802.11g/n-HT20: OFDM Bluetooth: GFSK, $\pi/4$ -DQPSK, 8-DPSK	
Multi-slot Class:	GPRS: Multi-slot Class 33; EDGE: Multi-slot Class 33;	
Operation Class:	Class B	
Hotspot Mode:	WWAN/2.4GHz WLAN	
Antenna Type:	WWAN: PIFA Antenna WLAN: PIFA Antenna Bluetooth: PIFA Antenna	
SIM Cards Description:	SIM 1	GSM+ WCDMA+LTE
	SIM 2	GSM+ WCDMA+LTE
	For dual SIM card version, SIM 1 and SIM 2 are the same chipset unit and tested as a single chipset, the SIM 1 is selected for testing	

Note: For a more detailed description, please refer to specification or user manual supplied by the applicant and/or manufacturer.



2.3. Environment of Test Site/Conditions

Normal Temperature (NT):	20-25 °C
Relative Humidity:	30-75 %
Air Pressure:	980-1020 hPa

Test Frequency:	GSM 850MHz/1900MHz WCDMA Band II/IV/V FDD-LTE Band 2/4/5/7/26/66 TDD-LTE Band 38/40A/40B/41 WLAN 2.4GHz
Operation Mode:	Call established
Power Level:	GSM 850 MHz (Maximum output power(level 5)) GSM 1900MHz (Maximum output power(level 0)) WCDMA Band II/IV/V (All Up Bits) FDD-LTE Band 2/4/5/7/26/66 (Maximum output power) TDD-LTE Band 38/40A/40B/41 (Maximum output power) WLAN 2.4GHz

During SAR test, EUT is in Traffic Mode (Channel Allocated) at Normal Voltage Condition. A communication link is set up with a System Simulator (SS) by air link, and a call is established.

The EUT shall use its internal transmitter. The antenna(s), battery and accessories shall be those specified by the Factory. The EUT battery must be fully charged and checked periodically during the test to ascertain uniform power output. If a wireless link is used, the antenna connected to the output of the base station simulator shall be placed at least 50 cm away from the handset.

The signal transmitted by the simulator to the antenna feeding point shall be lower than the output power level of the handset by at least 35 dB.

3. Specific Absorption Rate (SAR)

3.1. Introduction

SAR is related to the rate at which energy is absorbed per unit mass in an object exposed to a radio field. The SAR distribution in a biological body is complicated and is usually carried out by experimental techniques or numerical modeling. The standard recommends limits for two tiers of groups, occupational or controlled and general population or uncontrolled, based on a person's awareness and ability to exercise control over his or her exposure. In general, occupational or controlled exposure limits are Middle than the limits for general population or uncontrolled.

3.2. SAR Definition

The SAR definition is the time derivative (rate) of the incremental energy (dW) absorbed by(dissipated in) an incremental mass (dm) contained in a volume element (dv) of a given density. (ρ). The equation description is as below:

$$\text{SAR} = \frac{d}{dt} \left(\frac{dW}{dm} \right) = \frac{d}{dt} \left(\frac{dW}{\rho dv} \right)$$

SAR is expressed in units of Watts per kilogram (W/kg).

SAR measurement can be either related to the temperature elevation in tissue by,

$$\text{SAR} = C \left(\frac{\delta T}{\delta t} \right)$$

Where C is the specific head capacity, δT is the temperature rise and δt the exposure duration, or related to the electrical field in the tissue by

$$\text{SAR} = \frac{\sigma |E|^2}{\rho}$$

Where σ is the conductivity of the tissue, ρ is the mass density of the tissue and $|E|$ is the rmselectrical field strength.

However for evaluating SAR of low power transmitter, electrical field measurement is typically applied.



4. RF Exposure Limits

4.1. Uncontrolled Environment

Uncontrolled Environments are defined as locations where there is the exposure of individuals who have no knowledge or control of their exposure. The general population/uncontrolled exposure limits are applicable to situations in which the general public may be exposed or in which persons who are exposed as a consequence of their employment may not be made fully aware of the potential for exposure or cannot exercise control over their exposure. Members of the general public would come under this category when exposure is not employment-related; for example, in the case of a wireless transmitter that exposes persons in its vicinity.

4.2. Controlled Environment

Controlled Environments are defined as locations where there is exposure that may be incurred by persons who are aware of the potential for exposure, (i.e. as a result of employment or occupation). In general, occupational/controlled exposure limits are applicable to situations in which persons are exposed as a consequence of their employment, who have been made fully aware of the potential for exposure and can exercise control over their exposure. The exposure category is also applicable when the exposure is of a transient nature due to incidental passage through a location where the exposure levels may be higher than the general population/uncontrolled limits, but the exposed person is fully aware of the potential for exposure and can exercise control over his or her exposure by leaving the area or by some other appropriate means.

Limits for General Population/Uncontrolled Exposure (W/kg)

Type Exposure	Uncontrolled Environment Limit
Spatial Peak SAR (1g cube tissue for head and trunk)	1.6 W/kg
Spatial Peak SAR (10g cube tissue for limbs)	4.0W/kg
Spatial Peak SAR (1g cube tissue for whole body)	0.08W/kg

Note:

- Occupational/Uncontrolled Environments are defined as locations where there is exposure that may be incurred by people who are aware of the potential for exposure(i.e. as a result of employment or occupation).
- Whole-Body SAR is averaged over the entire body, partial-body SAR is averaged over any 1gram of tissue defined as a tissue volume in the shape of a cube. SAR for hands, wrists, feet and ankles is averaged over any 10 grams of tissue defined as a tissue volume in the shape of a cube.



5. Applied Reference Documents

Leading reference documents for testing:

Identity	Document Title	Method Determination /Remark
FCC 47CFR Part 2(2.1093)	Radio Frequency Radiation Exposure Evaluation: Portable Devices	No deviation
IEEE 1528-2013	IEEE Recommended Practice for Determining the Peak Spatial-Average Specific Absorption Rate (SAR) in the Human Head from Wireless Communications Devices: Measurement Techniques	No deviation
KDB 447498 D01v06	General RF Exposure Guidance	No deviation
KDB 248227 D01v02r02	SAR Measurement Procedures for 802.11 Transmitters	No deviation
KDB865664 D01v01r04	SAR Measurement 100 MHz to 6 GHz	No deviation
KDB 865664 D02v01r02	RF Exposure Reporting	No deviation
KDB 648474 D04v01r03	Handset SAR	No deviation
KDB 941225 D01v03r01	3G SAR MEAUREMENT PROCEDURES	No deviation
KDB 941225 D05v02r05	SAR Evaluation Consideration for LTE Devices	No deviation
KDB 941225 D06v02r01	SAR Evaluation Procedures For Portable Devices With Wireless Router Capabilities	No deviation
<p>Note 1: The test item is not applicable.</p> <p>Note 2: Additions to, deviation, or exclusions from the method shall be judged in the "method determination" column of add, deviate or exclude from the specific method shall be explained in the "Remark" of the above table.</p>		

6. SAR Measurement System

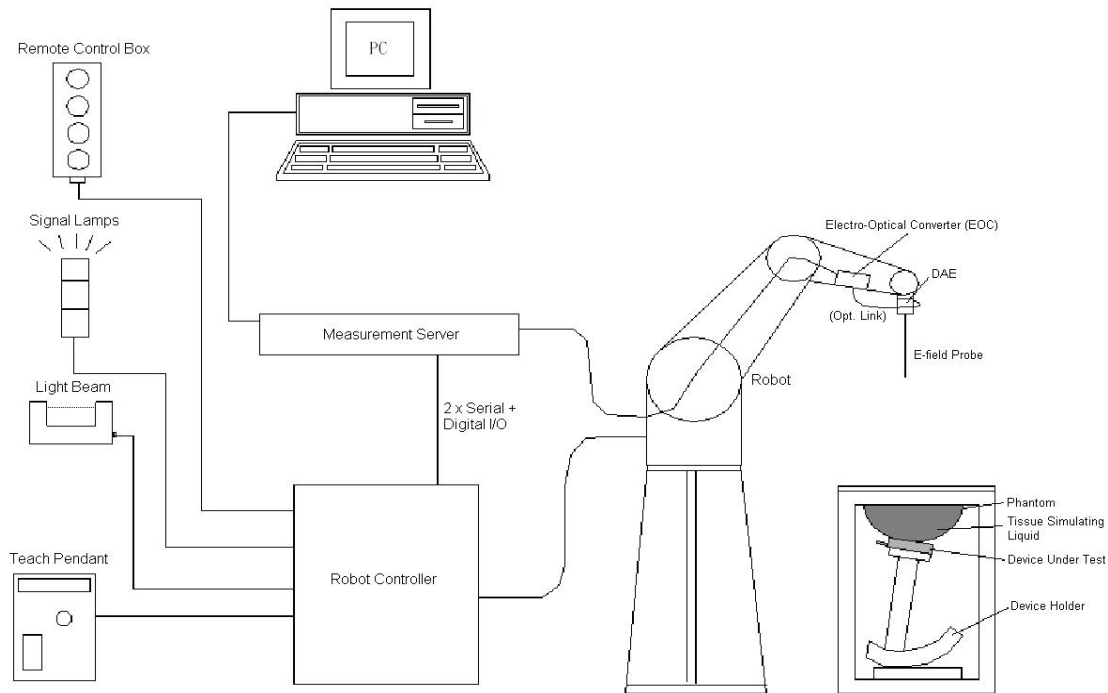


Fig 6.1 SPEAG DASY System Configurations

The DASY system for performance compliance tests is illustrated above graphically. This system consists of the following items:

- A standard high precision 6-axis robot with controller, a teach pendant and software.
- A data acquisition electronic (DAE) attached to the robot arm extension.
- A dosimetric probe equipped with an optical surface detector system.
- The electro-optical converter (ECO) performs the conversion between optical and electrical signals
- A measurement server performs the time critical tasks such as signal filtering, control of the robot operation and fast movement interrupts.
- A probe alignment unit which improves the accuracy of the probe positioning.
- A computer operating Windows XP.
- DASY software.
- Remote control with teach pendant and additional circuitry for robot safety such as warning lamps, etc.
- The SAM twin phantom.
- A device holder.
- Tissue simulating liquid.
- Dipole for evaluating the proper functioning of the system.
- Some of the components are described in details in the following sub-sections.

6.1. E-Field Probe

The SAR measurement is conducted with the dosimetric probe (manufactured by SPEAG). The probe is specially designed and calibrated for use in liquid with high permittivity. The dosimetric probe has special calibration in liquid at different frequency. This probe has a built in optical surface detection system to prevent from collision with phantom.

E-Field Probe Specification <ES3DV3 Probe>

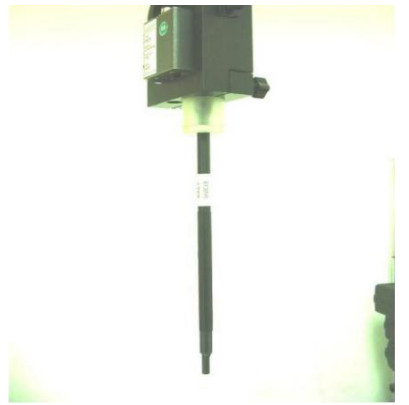
Construction	Symmetrical design with triangular core Built-in optical fiber for surface detection system. Built-in shielding against static charges. PEEK enclosure material (resistant to organic solvents, e.g., DGBE)	
Frequency	10 MHz to 3 GHz; Linearity: ± 0.2 dB	
Directivity	± 0.2 dB in HSL (rotation around probe axis) ± 0.4 dB in HSL (rotation normal to probe axis)	
Dynamic Range	5 μ W/g to 100 mW/g; Linearity: ± 0.2 dB	
Dimensions	Overall length: 330 mm (Tip: 16 mm) Tip diameter: 6.8 mm (Body: 12 mm) Distance from probe tip to dipole centers: 2.7 mm	

Fig 6.2 Photo of ES3DV3

<EX3DV4 Probe>


Construction	Symmetrical design with triangular core Built-in shielding against static charges PEEK enclosure material (resistant to organic solvents, e.g., DGBE)	
Frequency	10 MHz to 6 GHz; Linearity: ± 0.2 dB	
Directivity	± 0.3 dB in HSL (rotation around probe axis) ± 0.5 dB in tissue material (rotation normal to probe axis)	
Dynamic Range	10 μ W/g to 100 mW/g; Linearity: ± 0.2 dB	
Dimensions	Overall length: 330 mm (Tip: 20 mm) Tip diameter: 2.5 mm (Body: 12 mm) Typical distance from probe tip to dipole centers: 1 mm	

Fig 6.3 Photo of EX3DV4

E-Field Probe Calibration

Each probe needs to be calibrated according to a dosimetric assessment procedure with accuracy better than $\pm 10\%$. The spherical isotropy shall be evaluated and within ± 0.25 dB. The sensitivity parameters (NormX, NormY, and NormZ), the diode compression parameter (DCP) and the conversion factor (ConvF) of the probe are tested. The calibration data can be referred to appendix C of this report.

6.2. Data Acquisition Electronics (DAE)

The data acquisition electronics(DAE) consists of a highly sensitive electrometer-grade preamplifier with auto-zeroing, a channel and gain-switching multiplexer, a fast 16 bit AD-converter and a command decoder and control logic unit. AD-converter and a command decoder and control logic unit. Transmission to the measurement server is accomplished through an optical downlink for data and status information as well as an optical uplink for commands and the clock. The input impedance of the DAE is 200M Ω ; the inputs are symmetrical and floating. Common mode rejection is above 80 dB.

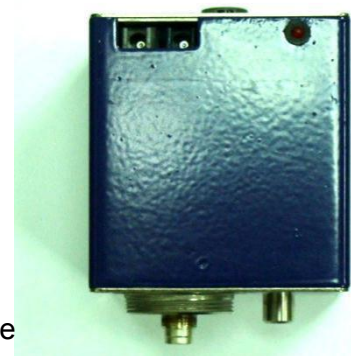


Fig 6.4 Photo of DAE

6.3. Robot

The SPEAG DASY system uses the high precision robots (DASY4: RX90BL; DASY5: TX90XL) type from Stäubli SA (France). For the 6-axis controller system, the robot controller version (DASY4: CS7MB; DASY5: CS8c) from Stäubli is used. The Stäubli robot series have many features that are important for our application:

High precision (repeatability ± 0.035 mm)

High reliability (industrial design)

Jerk-free straight movements

Low ELF interference (the closed metallic construction shields against motor control fields)



Fig 6.5 Photo of DASY5

6.4. Measurement Server

The measurement server is based on a PC/104 CPU board with CPU (DASY4: 166 MHz, Intel Pentium; DASY5: 400 MHz, Intel Celeron), chipdisk (DASY4: 32 MB; DASY5: 128 MB), RAM (DASY4: 64 MB, DASY5: 128 MB). The necessary circuits for communication with the DAE electronic box, as well as the 16 bit AD converter system for optical detection and digital I/O interface are contained on the DASY I/O board, which is directly connected to the PC/104 bus of the CPU board.

The measurement server performs all the real-time data evaluation for field measurements and surface detection, controls robot movements and handles safety operations.



Fig 6.6 Photo of Server for DASY5

6.5. Light Beam Unit

The light beam switch allows automatic "tooling" of the probe. During the process, the actual position of the probe tip with respect to the robot arm is measured, as well as the probe length and the horizontal probe offset. The software then corrects all movements, such that the robot coordinates are valid for the probe tip.

The repeatability of this process is better than 0.1 mm. If a position has been taught with an aligned probe, the same position will be reached with another aligned probe within 0.1 mm, even if the other probe has different dimensions. During probe rotations, the probe tip will keep its actual position.



Fig. 6.7 Photo of Light Beam

6.6. Phantom

<SAM Twin Phantom>

Shell Thickness	2 ± 0.2 mm (sagging: <1%) Center ear point: 6 ± 0.2 mm
Filling Volume	Approx. 25 liters
Dimensions	Length: 1000 mm; Width: 500 mm; Height: adjustable feet
Measurement Areas	Left Head, Right Head, Flat Phantom



Fig. 6.8 Photo of SAM Phantom

The bottom plate contains three pair of bolts for locking the device holder. The device holder positions are adjusted to the standard measurement positions in the three sections. A white cover is provided to tap the phantom during off-periods to prevent water evaporation and changes in the liquid parameters. On the phantom top, three reference markers are provided to identify the phantom position with respect to the robot.

6.7. Device Holder

<Device Holder for SAM Twin Phantom>

The SAR in the phantom is approximately inversely proportional to the square of the distance between the source and the liquid surface. For a source at 5 mm distance, a positioning uncertainty of ± 0.5 mm would produce a SAR uncertainty of ± 20 %. Accurate device positioning is therefore crucial for accurate and repeatable measurements. The positions in which the devices must be measured are defined by the standards.

The DASY device holder is designed to cope with different positions given in the standard. It has two scales for the device rotation (with respect to the body axis) and the device inclination (with respect to the line between the ear reference points). The rotation center for both scales is the ear reference point (EPR). Thus the device needs no repositioning when changing the angles.

The DASY device holder is constructed of low-loss POM material having the following dielectric parameters: relative permittivity $\epsilon = 3$ and loss tangent $\delta = 0.02$. The amount of dielectric material has been reduced in the closest vicinity of the device, since measurements have suggested that the influence of the clamp on the test results could thus be lowered.

<Laptop Extension Kit>

The extension is lightweight and made of POM, acrylic glass and foam. It fits easily on the upper part of the mounting device in place of the phone positioned. The extension is fully compatible with the SAM Twin and ELI phantoms.



Fig 6.9 Device Holder

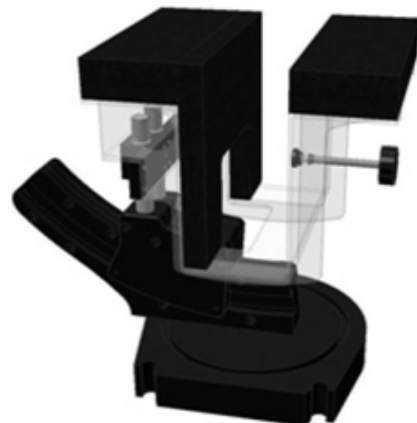


Fig 6.10 Laptop Extension Kit



6.8. Data Storage and Evaluation

➤ Data Storage

The DASY software stores the assessed data from the data acquisition electronics as raw data (in microvolt readings from the probe sensors), together with all the necessary software parameters for the data evaluation (probe calibration data, liquid parameters and device frequency and modulation data) in measurement files. The post-processing software evaluates the desired unit and format for output each time the data is visualized or exported. This allows verification of the complete software setup even after the measurement and allows correction of erroneous parameter settings. For example, if a measurement has been performed with an incorrect crest factor parameter in the device setup, the parameter can be corrected afterwards and the data can be reevaluated.

The measured data can be visualized or exported in different units or formats, depending on the selected probe type (e.g., [V/m], [A/m], [mW/g]). Some of these units are not available in certain situations or give meaningless results, e.g., a SAR-output in a non-lose media, will always be zero. Raw data can also be exported to perform the evaluation with other software packages.

➤ Data Evaluation

The DASY post-processing software (SEMCAD) automatically executes the following procedures to calculate the field units from the microvolt readings at the probe connector. The parameters used in the evaluation are stored in the configuration modules of the software.

Probe parameters:	- Sensitivity	Norm _i , a _{i0} , a _{i1} , a _{i2}
	- Conversion factor	ConvF _i
	- Diode compression point	dcpi
Device parameters:	- Frequency	f
	- Crest factor	cf
Media parameters:	- Conductivity	σ
	- Density	ρ

These parameters must be set correctly in the software. They can be found in the component documents or they can be imported into the software from the configuration files issued for the DASY components. In the direct measuring mode of the multi-meter option, the parameters of the actual system setup are used. In the scan visualization and export modes, the parameters stored in the corresponding document files are used.

The first step of the evaluation is a linearization of the filtered input signal to account for the compression characteristics of the detector diode. The compensation depends on the input signal, the



diode type and the DC-transmission factor from the diode to the evaluation electronics. If the exciting field is pulsed, the crest factor of the signal must be known to correctly compensate for peak power.

The formula for each channel can be given as:

$$V_i = U_i + U_i^2 \times \frac{cf}{dcp_i}$$

With V_i = compensated signal of channel i , ($i = x, y, z$)
 U_i = input signal of channel i , ($i = x, y, z$)
 cf = crest factor of exciting field (DASY parameter)
 dcp_i = diode compression point (DASY parameter)

From the compensated input signals, the primary field data for each channel can be evaluated:

$$\text{E-field Probes: } E_i = \sqrt{\frac{V_i}{\text{Norm}_i \times \text{ConvF}}}$$

$$\text{H-field Probes: } H_i = \sqrt{V_i} \times \frac{a_{i0} + a_{i1} + a_{i2}f^2}{f}$$

With V_i = compensated signal of channel i , ($i = x, y, z$)
 Norm_i = sensor sensitivity of channel i , ($i = x, y, z$), $\mu\text{V}/(\text{V/m})^2$ for E-field Probes
 ConvF = sensitivity enhancement in solution
 a_{ij} = sensor sensitivity factors for H-field probes
 f = carrier frequency [GHz]
 E_i = electric field strength of channel i in V/m
 H_i = magnetic field strength of channel i in A/m

The RSS value of the field components gives the total field strength (Hermitian magnitude):

$$E_{\text{tot}} = \sqrt{E_x^2 + E_y^2 + E_z^2}$$

The primary field data are used to calculate the derived field units.

$$\text{SAR} = E_{\text{tot}}^2 \times \frac{\sigma}{\rho \times 1000}$$

with SAR = local specific absorption rate in mW/g

E_{tot} = total field strength in V/m

σ = conductivity in [mho/m] or [Siemens/m]

ρ = equivalent tissue density in g/cm^3

Note that the density is set to 1, to account for actual head tissue density rather than the density of the tissue simulating liquid.



6.9. Test Equipment List

Manufacturer	Name of Equipment	Type/Model	Serial Number	Calibration	
				Last Cal.	Due Date
SPEAG	900MHz System Validation Kit	D900V2	1d064	2018.10.29	2021.10.28
SPEAG	1800MHz System Validation Kit	D1800V2	2d158	2018.10.31	2021.10.30
SPEAG	2000MHz System Validation Kit	D2000V2	1050	2018.10.31	2021.10.30
SPEAG	2300MHz System Validation Kit	D2300V2	1107	2020.06.03	2023.06.02
SPEAG	2450MHz System Validation Kit	D2450V2	805	2018.10.26	2021.10.25
SPEAG	2600MHz System Validation Kit	D2600V2	1139	2021.06.25	2024.06.24
SPEAG	DOSIMETRIC ASSESSMENT SYSTEM	DASY52	52.10.4.1527	NCR	NCR
SPEAG	Dosimetric E-Field Probe	EX3DV4	3823	2021.01.22	2022.01.21
SPEAG	Data Acquisition Electronics	DAE4	480	2021.06.22	2022.06.21
SPEAG	Dielectric Assessment KIT	DAK-3.5	1279	2020.11.03	2021.11.02
SPEAG	SAM Twin Phantom 2	QD 000 P40 CB	TP-1464	NCR	NCR
SPEAG	Phone Positioner	N/A	N/A	NCR	NCR
R&S	Network Emulator	CMW500	165755	2021.02.25	2022.02.24
Agilent	Network Analyzer	E5071B	MY42404762	2021.03.29	2022.03.28
mini-circuits	Amplifier	ZHL-42W+	608501717	NCR	NCR
Agilent	Signal Generator	N5182B	MY53050509	2021.03.25	2022.03.24
Agilent	Power Sensor	N8482A	MY41090849	2020.10.19	2021.10.18
Agilent	Power Meter	E4416A	MY45102093	2020.10.19	2021.10.18
Anritsu	Power Sensor	MA2411B	N/A	2020.10.19	2021.10.18
Anritsu	Power Meter	NRVD	101066	2020.10.19	2021.10.18
Agilent	Dual Directional Coupler	778D	50422	NA	NA
MCL	Attenuation1	351-218-010	N/A	NA	NA
KTJ	Thermo meter	TA298	N/A	2021.01.15	2022.01.14
N/A	Tissue Simulating Liquids	700-6000MHz	N/A	24H	

Note:

1. The calibration certificate of DASY can be referred to appendix F of this report.
2. The Insertion Loss calibration of Dual Directional Coupler and Attenuator were characterized via the network analyzer and compensated during system check.
3. The dielectric probe kit was calibrated via the network analyzer, with the specified procedure (calibrated in pure water) and calibration kit (standard) short circuit, before the dielectric measurement. The specific procedure and calibration kit are provided by Speag.



4. In system check we need to monitor the level on the power meter, and adjust the power amplifier level to have precise power level to the dipole; the measured SAR will be normalized to 1W input power according to the ratio of 1W to the input power to the dipole. For system check, the calibration of the power amplifier is deemed not critically required for correct measurement; the power meter is critical and we do have calibration for it.
5. Attenuator insertion loss is calibrated by the network Analyzer, which the calibration is valid, before system check.
6. N.C.R means No Calibration Requirement.

7. Tissue Simulating Liquids

For the measurement of the field distribution inside the SAM phantom with DASY, the phantom must be filled with around 25 liters of homogeneous body tissue simulating liquid. For head SAR testing, the liquid height from the ear reference point (ERP) of the phantom to the liquid top surface is larger than 15 cm, which is shown in Fig. 7.1, for body SAR testing, the liquid height from the centre of the flat phantom to liquid top surface is larger than 15 cm, which is shown in Fig. 7.2.

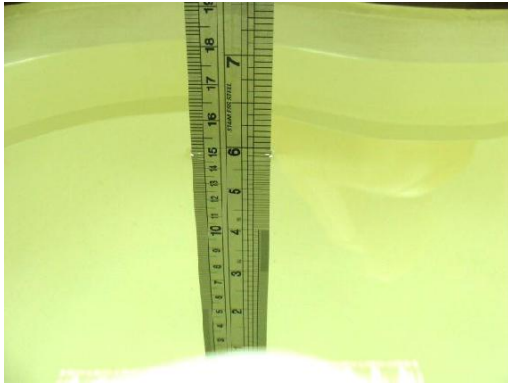


Fig 7.1 Photo of Liquid Height for Head SAR



Fig 7.2 Photo of Liquid Height for Body SAR

The following table gives the recipes for tissue simulating liquids

Frequency (MHz)	Water (%)	Sugar (%)	Cellulose (%)	Salt (%)	Preventol (%)	DGBE (%)	Conductivity (σ)	Permittivity (ϵ_r)
Head								
750	41.1	57.0	0.2	1.4	0.2	0	0.89	41.9
835	40.3	57.9	0.2	1.4	0.2	0	0.90	41.5
1800, 1900, 2000	55.2	0	0	0.3	0	44.5	1.40	40.0
2450	55.0	0	0	0	0	45.0	1.80	39.2
2600	54.8	0	0	0.1	0	45.1	1.96	39.0
Body								
750	51.7	47.2	0	0.9	0.1	0	0.96	55.5
835	50.8	48.2	0	0.9	0.1	0	0.97	55.2
1800, 1900, 2000	70.2	0	0	0.4	0	29.4	1.52	53.3
2450	68.6	0	0	0	0	31.4	1.95	52.7
2600	68.1	0	0	0.1	0	31.8	2.16	52.5

Simulating Liquid for 5GHz, Manufactured by SPEAG.

Ingredients	(% by weight)
Water	64~78%
Mineral oil	11~18%
Emulsifiers	9~15%
Additives and Salt	2~3%

Note: Please refer to the validation results for dielectric parameters of each frequency band.

The dielectric properties of the tissue simulating liquids were verified prior to the SAR evaluation using a SPEAG Dielectric Assessment KIT and an Agilent Network Analyzer.



Table 1: Dielectric Performance of Tissue Simulating Liquid

Frequency (MHz)	Tissue Type	Liquid Temp. (°C)	Conductivity (σ)	Conductivity Target (σ)	Delta (σ) (%)	Limit (%)	Date
900	HSL	22.1	0.983	0.97	1.34	±5	2021.09.15
1800	HSL	22.2	1.412	1.40	0.86	±5	2021.09.18
2000	HSL	22.1	1.427	1.40	1.93	±5	2021.09.30
2300	HSL	22.1	1.724	1.67	3.23	±5	2021.09.21
2450	HSL	22.2	1.836	1.80	2.00	±5	2021.09.26
2600	HSL	22.2	1.985	1.96	1.28	±5	2021.09.24
Frequency (MHz)	Tissue Type	Liquid Temp. (°C)	Permittivity (ϵ_r)	Permittivity Target (ϵ_r)	Delta (ϵ_r) (%)	Limit (%)	Date
900	HSL	22.1	41.253	41.50	-0.60	±5	2021.09.15
1800	HSL	22.2	40.359	40.00	0.90	±5	2021.09.18
2000	HSL	22.1	39.658	40.00	-0.85	±5	2021.09.30
2300	HSL	22.1	39.851	39.50	0.89	±5	2021.09.21
2450	HSL	22.2	38.724	39.20	-1.21	±5	2021.09.26
2600	HSL	22.2	39.267	39.00	0.68	±5	2021.09.24

8. SAR System Verification

Each DASY system is equipped with one or more system validation kits. These units, together with the predefined measurement procedures within the DASY software, enable the user to conduct the system performance check and system validation. System validation kit includes a dipole, tripod holder to fix it underneath the flat phantom and a corresponding distance holder.

8.1. Purpose of System Performance check

The system performance check verifies that the system operates within its specifications. System and operator errors can be detected and corrected. It is recommended that the system performance check be performed prior to any usage of the system in order to guarantee reproducible results. The system performance check uses normal SAR measurements in a simplified setup with a well characterized source. This setup was selected to give a high sensitivity to all parameters that might fail or vary over time. The system check does not intend to replace the calibration of the components, but indicates situations where the system uncertainty is exceeded due to drift or failure.

8.2. System Setup

The output power on dipole port must be calibrated to 24 dBm (250 mW) before dipole is connected. In the simplified setup for system evaluation, the DUT is replaced by a calibrated dipole and the power source is replaced by a continuous wave which comes from a signal generator. The calibrated dipole must be placed beneath the flat phantom section of the SAM twin phantom with the correct distance holder. The distance holder should touch the phantom surface with a light pressure at the reference marking and be oriented parallel to the long side of the phantom. The system check verifies that the system operates within its specifications. It is performed daily or before every SAR measurement. The system check uses normal SAR measurements in the flat section of the phantom with a matched dipole at a specified distance. The system verification setup is shown as below.



Fig 8.1 Photo of Dipole Setup

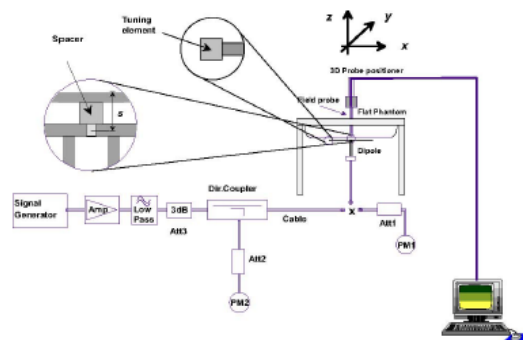


Fig 8.2 System Setup for System Evaluation



8.3. Validation Results

After system check testing, the SAR result will be normalized to 1W forward input power and compared with the reference SAR value derived from validation dipole certificate report. The deviation of system check should be within 10 %.

<Validation Setup>

Frequency (MHz)	Tissue Type	Input Power(mW)	Dipole S/N	Probe S/N	DAE S/N
900	HSL	250	D900V2-1d064	3823	480
1800	HSL	250	D1800V2-2d158	3823	480
2000	HSL	250	D2000V2-1050	3823	480
2300	HSL	250	D2300V2-1107	3823	480
2450	HSL	250	D2450V2-805	3823	480
2600	HSL	250	D2600V2-1139	3823	480

<System Validation>

Frequency (MHz)	Tissue Type	Conductivity (σ)	Permittivity (ϵ_r)	CW Signal Validation		
				Sensitivity	Probe Linearity	Probe Isotropy
750	HSL	0.851	42.43	PASS	PASS	PASS
835	HSL	0.898	41.88	PASS	PASS	PASS
1750	HSL	1.386	39.91	PASS	PASS	PASS
1800	HSL	1.449	41.26	PASS	PASS	PASS
1900	HSL	1.435	39.65	PASS	PASS	PASS
2000	HSL	1.451	39.42	PASS	PASS	PASS
2300	HSL	1.764	38.99	PASS	PASS	PASS
2450	HSL	1.863	38.85	PASS	PASS	PASS
2600	HSL	1.973	38.58	PASS	PASS	PASS
5250	HSL	4.528	35.32	PASS	PASS	PASS
5600	HSL	4.905	34.89	PASS	PASS	PASS
5750	HSL	5.077	34.28	PASS	PASS	PASS



Frequency (MHz)	Tissue Type	Conductivity (σ)	Permittivity (ϵ_r)	Modulation Signal Validation		
				Mod. Type	Duty Factor	PAR
750	HSL	0.851	42.43	N/A	N/A	N/A
835	HSL	0.898	41.88	GMSK	PASS	N/A
1750	HSL	1.386	39.91	N/A	N/A	N/A
1800	HSL	1.449	41.26	N/A	N/A	N/A
1900	HSL	1.435	39.65	GMSK	PASS	N/A
2000	HSL	1.451	39.42	GMSK	PASS	N/A
2300	HSL	1.764	38.99	OFDM	PASS	PASS
2450	HSL	1.863	38.85	OFDM	PASS	PASS
2600	HSL	1.973	38.58	TDD	PASS	N/A
5250	HSL	4.528	35.32	OFDM	N/A	PASS
5600	HSL	4.905	34.89	OFDM	N/A	PASS
5750	HSL	5.077	34.28	OFDM	N/A	PASS

<Validation Results>

Date	Frequency (MHz)	Tissue Type	Input Power (mW)	Measured 1g SAR (W/kg)	Targeted 1g SAR (W/kg)	Normalized 1g SAR (W/kg)	Deviation (%)
2021.09.15	900	HSL	250	2.73	10.90	10.92	0.18
2021.09.18	1800	HSL	250	9.96	39.30	39.84	1.37
2021.09.30	2000	HSL	250	10.32	40.90	41.28	0.93
2021.09.21	2300	HSL	250	12.15	48.40	48.6	0.41
2021.09.26	2450	HSL	250	13.17	52.00	52.68	1.31
2021.09.24	2600	HSL	250	13.41	54.00	53.64	-0.67

Date	Frequency (MHz)	Tissue Type	Input Power (mW)	Measured 10g SAR (W/kg)	Targeted 10g SAR (W/kg)	Normalized 10g SAR (W/kg)	Deviation (%)
2021.09.15	900	HSL	250	1.75	6.97	7	0.43
2021.09.18	1800	HSL	250	5.24	20.60	20.96	1.75
2021.09.30	2000	HSL	250	5.41	20.90	21.64	3.54
2021.09.21	2300	HSL	250	5.83	23.00	23.32	1.39
2021.09.26	2450	HSL	250	6.11	24.10	24.44	1.41
2021.09.24	2600	HSL	250	6.27	24.50	25.08	2.37

Note: System checks the specific test data please see Annex C.

9. EUT Testing Position

This EUT was tested in six different positions. They are right cheek/right tilted/left cheek/left tilted for head, Front/Back of the EUT with phantom 10 mm gap, as illustrated below, please refer to Appendix B for the test setup photos.

9.1. Handset Reference Points

The vertical centre line passes through two points on the front side of the handset – the midpoint of the width w_t of the handset at the level of the acoustic output, and the midpoint of the width w_b of the bottom of the handset.

The horizontal line is perpendicular to the vertical centre line and passes the center of the acoustic output. The horizontal line is also tangential to the handset at point A.

The two lines intersect at point A. Note that for many handsets, point A coincides with the center of the acoustic output; however, the acoustic output may be located elsewhere on the horizontal line. Also note that the vertical centre line is not necessarily parallel to the front face of the handset, especially for clamshell handsets, handsets with flip covers, and other irregularly shaped handsets.



Fig. 9.1 Illustration for Cheek Position

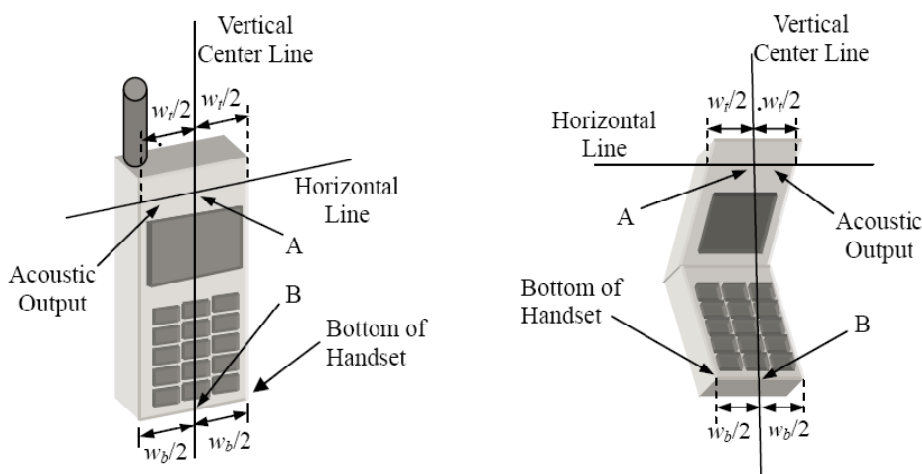


Fig. 9.2 Illustration for Handset Vertical and Horizontal Reference Lines

9.2. Positioning for Cheek / Touch

To position the device with the vertical center line of the body of the device and the horizontal line crossing the center piece in a plane parallel to the sagittal plane of the phantom. While maintaining the device in this plane, align the vertical center line with the reference plane containing the three ear and mouth reference point (M: Mouth, RE: Right Ear and LE: Left Ear) and align the center of the ear piece with the line RE-LE.

To move the device towards the phantom with the ear piece aligned with the line LE-RE until the phone touched the ear. While maintaining the device in the reference plane and maintaining the phone contact with the ear, move the bottom of the phone until any point on the front side is in contact with the cheek of the phantom or until contact with the ear is lost (see below figure)

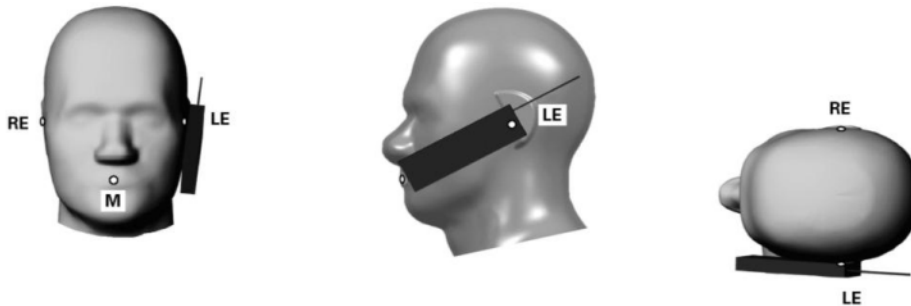


Fig 9.3 Illustration for Cheek Position

9.3. Positioning for Ear / 15° Tilt

To position the device in the “cheek” position described above.

While maintaining the device the reference plane described above and pivoting against the ear, moves it outward away from the mouth by an angle of 15 degrees or until contact with the ear is lost (see figure below).

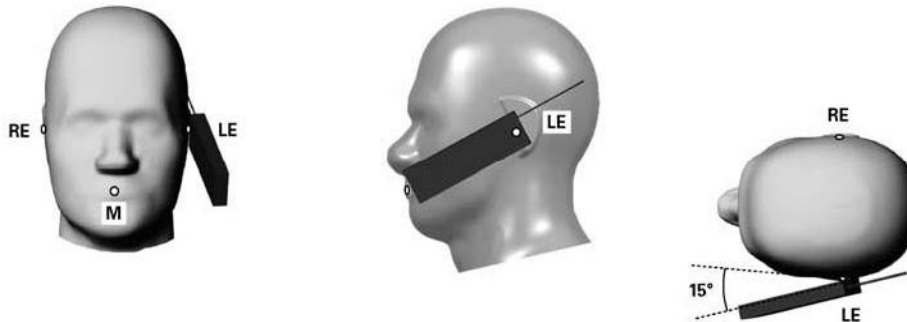


Fig 9.4 Illustration for Tilted Position

9.4. SAR Evaluations near the Mouth/Jaw Regions of the SAM

Antennas located near the bottom of a phone may require SAR measurements around the mouth and jaw regions of the SAM head phantom. This typically applies to clam-shell style phones that are generally longer in the unfolded normal use positions or to certain older style long rectangular phones.

Under these circumstances, the following procedures apply, adopted from the FCC guidance on SAR handsets document FCC KDB Publication 648474 D04v01r03. The SAR required in these regions of SAM should be measured using a flat phantom. The phone should be positioned with a separation distance of 4 mm between the ear reference point (ERP) and the outer surface of the flat phantom shell. While maintaining this distance at the ERP location, the low (bottom) edge of the phone should be lowered from the phantom to establish the same separation distance between the peak SAR locations identified by the truncated partial SAR distribution measured with the SAM phantom. The distance from the peak SAR location to the phone is determined by the straight line passing perpendicularly through the phantom surface. When it is not feasible to maintain 4 mm separation at the ERP while also establishing the required separation at the peak SAR location, the top edge of the phone will be allowed to touch the phantom with a separation < 4 mm at the ERP. The phone should not be tilted to the left or right while placed in this inclined position to the flat phantom.

9.5. Body-worn Configurations

The body-worn configurations shall be tested with the supplied accessories (belt-clips, holsters, etc.) attached to the device in normal use configuration.

For body-worn and other configurations a flat phantom shall be used which is comprised of material with electrical properties similar to the corresponding tissues.

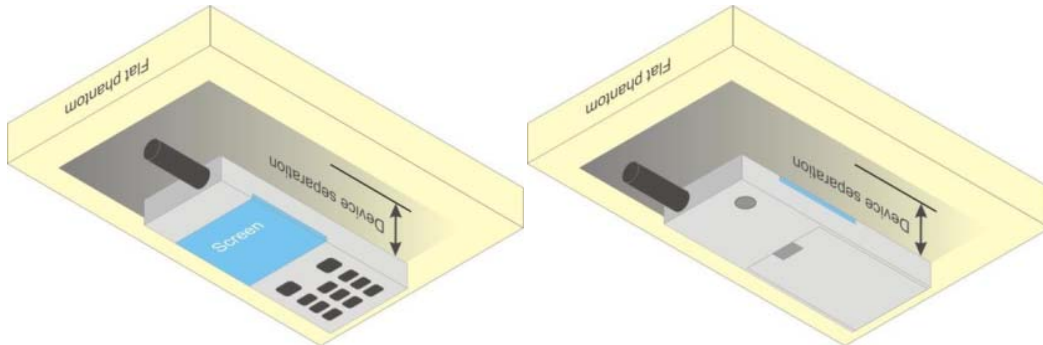


Fig 9.5 Illustration for Body Worn Position

9.6. Hotspot Mode Exposure Position Conditions

For handsets that support hotspot mode operations, with wireless router capabilities and various web browsing functions, the relevant hand and body exposure conditions are tested according to the hotspot SAR procedures in KDB 941225. A test separation distance of 10 mm is required between the phantom and all surfaces and edges with a transmitting antenna located within 25 mm from that surface or edge. When the form factor of a handset is smaller than 9 cm x 5 cm, a test separation distance of 5 mm (instead of 10 mm) is required for testing hotspot mode. When the separation distance required for body-worn accessory testing is larger than or equal to that tested for hotspot mode, in the same wireless mode and for the same surface of the phone, the hotspot mode SAR data may be used to support body-worn accessory SAR compliance for that particular configuration (surface).

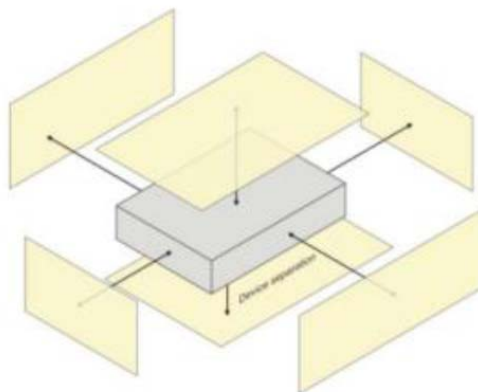


Fig 9.6 Illustration for Hotspot Position

10. Measurement Procedures

The measurement procedures are as follows:

<Conducted power measurement>

- (a) For WWAN power measurement, use base station simulator to configure EUT WWAN transmission in conducted connection with RF cable, at maximum power in each supported wireless interface and frequency band.
- (b) Read the WWAN RF power level from the base station simulator.
- (c) For WLAN/BT power measurement, use engineering software to configure EUT WLAN/BT continuously transmission, at maximum RF power in each supported wireless interface and frequency band.
- (d) Connect EUT RF port through RF cable to the power meter, and measure WLAN/BT output power.

<SAR measurement>

- (a) Use base station simulator to configure EUT WWAN transmission in radiated connection, and engineering software to configure EUT WLAN/BT continuously transmission, at maximum RF power, in the highest power channel.
- (b) Place the EUT in the positions as Appendix D demonstrates.
- (c) Set scan area, grid size and other setting on the DASY software.
- (d) Measure SAR results for the highest power channel on each testing position.
- (e) Find out the largest SAR result on these testing positions of each band.
- (f) Measure SAR results for other channels in worst SAR testing position if the reported SAR of highest power channel is larger than 0.8 W/kg.

According to the test standard, the recommended procedure for assessing the peak spatial-average SAR value consists of the following steps:

- (a) Power reference measurement.
- (b) Area scan.
- (c) Zoom scan.
- (d) Power drift measurement.

10.1. Spatial Peak SAR Evaluation

The procedure for spatial peak SAR evaluation has been implemented according to the test standard. It can be conducted for 1g and 10g, as well as for user-specific masses. The DASY software includes all numerical procedures necessary to evaluate the spatial peak SAR value.

The base for the evaluation is a "cube" measurement. The measured volume must include the 1g and 10g cubes with the highest averaged SAR values. For that purpose, the center of the measured volume is aligned to the interpolated peak SAR value of a previously performed area scan.



The entire evaluation of the spatial peak values is performed within the post-processing engine (SEMCAD). The system always gives the maximum values for the 1g and 10g cubes. The algorithm to find the cube with highest averaged SAR is divided into the following stages:

- (a) Extraction of the measured data (grid and values) from the Zoom Scan.
- (b) Calculation of the SAR value at every measurement point based on all stored data (A/D values and measurement parameters).
- (c) Generation of a high-resolution mesh within the measured volume.
- (d) Interpolation of all measured values from the measurement grid to the high-resolution grid.
- (e) Extrapolation of the entire 3-D field distribution to the phantom surface over the distance from sensor to surface.
- (f) Calculation of the averaged SAR within masses of 1g and 10g.

10.2. Power Reference Measurement

The Power Reference Measurement and Power Drift Measurements are for monitoring the power drift of the device under test in the batch process. The minimum distance of probe sensors to surface determines the closest measurement point to phantom surface. This distance cannot be smaller than the distance of sensor calibration points to probe tip as defined in the probe properties.

10.3. Area Scan Procedures

Area scans are defined prior to the measurement process being executed with a user defined variable spacing between each measurement point (integral) allowing low uncertainty measurements to be conducted. Scans defined for FCC applications utilize a 10mm² step integral, with 1mm interpolation used to locate the peak SAR area used for zoom scan assessments.

When an Area Scan has measured all reachable points, it computes the field maxima founding the scanned area, within a range of the global maximum. The range (in dB) is specified in the standards for compliance testing. For example, a 2 dB range is required in IEEE1528-2003.

10.4. Zoom Scan Procedures

Zoom Scans are used to assess the peak spatial SAR values within a cubic averaging volume containing 1 g and 10 g of simulated tissue. A density of 1000 kg/m³ is used to represent the head and body tissue density and not the phantom liquid density, in order to be consistent with the definition of the liquid dielectric properties, i.e. the side length of the 1g cube is 10mm, with the side length of the 10 g cube



21,5mm. The zoom scan integer steps can be user defined so as to reduce uncertainty, but normal practice for typical test applications utilize a physical step of 5x5x7 (8mmx8mmx5mm) providing a volume of 32mm in the X & Y axis, and 30mm in the Z axis.

10.5. SAR Averaged Methods

In DASYS, the interpolation and extrapolation are both based on the modified Quadratic Sheppard's method. The interpolation scheme combines a least-square fitted function method and a weighted average method which are the two basic types of computational interpolation and approximation.

Extrapolation routines are used to obtain SAR values between the lowest measurement points and the inner phantom surface. The extrapolation distance is determined by the surface detection distance and the probe sensor offset. The uncertainty increases with the extrapolation distance. To keep the uncertainty within 1% for the 1 g and 10 g cubes, the extrapolation distance should not be larger than 5 mm.

10.6. Power Drift Monitoring

All SAR testing is under the DUT install full charged battery and transmit maximum output power. In DASYS measurement software, the power reference measurement and power drift measurement procedures are used for monitoring the power drift of DUT during SAR test. Both these procedures measure the field at a specified reference position before and after the SAR testing. The software will calculate the field difference in dB. If the power drift more than 5%, the SAR will be retested.

11. SAR Test Procedure

11.1. General Scan Requirements

Probe boundary effect error compensation is required for measurements with the probe tip closer than half a probe tip diameter to the phantom surface. Both the probe tip diameter and sensor offset distance must satisfy measurement protocols; to ensure probe boundary effect errors are minimized and the higher fields closest to the phantom surface can be correctly measured and extrapolated to the phantom surface for computing 1-g SAR. Tolerances of the post-processing algorithms must be verified by the test laboratory for the scan resolutions used in the SAR measurements, according to the reference distribution functions specified in IEEE Std. 1528-2013.

		≤ 3 GHz	> 3 GHz	
Maximum distance from closest measurement point (geometric center of probe sensors) to phantom surface		5 mm \pm 1 mm	$\frac{1}{2} \cdot \delta \cdot \ln(2)$ mm \pm 0.5 mm	
Maximum probe angle from probe axis to phantom surface normal at the measurement location		$30^\circ \pm 1^\circ$	$20^\circ \pm 1^\circ$	
Maximum area scan spatial resolution: ΔX_{Area} , ΔY_{Area}		≤ 2 GHz: ≤ 15 mm 2 – 3 GHz: ≤ 12 mm	3 – 4 GHz: ≤ 12 mm 4 – 6 GHz: ≤ 10 mm	
		When the x or y dimension of the test device, in the measurement plane orientation, is smaller than the above, the measurement resolution must be \leq the corresponding x or y dimension of the test device with at least one measurement point on the test device.		
Maximum zoom scan spatial resolution: ΔX_{Zoom} , ΔY_{Zoom}		≤ 2 GHz: ≤ 8 mm 2 – 3 GHz: ≤ 5 mm*	3 – 4 GHz: ≤ 5 mm* 4 – 6 GHz: ≤ 4 mm*	
Maximum zoom scan spatial resolution, normal to phantom surface	uniform grid: $\Delta Z_{Zoom}(n)$	≤ 5 mm	3 – 4 GHz: ≤ 4 mm 4 – 5 GHz: ≤ 3 mm 5 – 6 GHz: ≤ 2 mm	
	graded grid	$\Delta Z_{Zoom}(1)$: between 1 st two points closest to phantom surface	≤ 4 mm	3 – 4 GHz: ≤ 3 mm 4 – 5 GHz: ≤ 2.5 mm 5 – 6 GHz: ≤ 2 mm
		$\Delta Z_{Zoom}(n>1)$: between subsequent points	$\leq 1.5 \cdot \Delta Z_{Zoom}(n-1)$ mm	
Minimum zoom scan volume	x, y, z	≥ 30 mm	3 – 4 GHz: ≥ 28 mm 4 – 5 GHz: ≥ 25 mm 5 – 6 GHz: ≥ 22 mm	
Note: δ is the penetration depth of a plane-wave at normal incidence to the tissue medium; see IEEE Std 1528-2013 for details. * When zoom scan is required and the <i>reported</i> SAR from the <i>area scan based 1-g SAR estimation</i> procedures of KDB Publication 447498 is ≤ 1.4 W/kg, ≤ 8 mm, ≤ 7 mm and ≤ 5 mm zoom scan resolution may be applied, respectively, for 2 GHz to 3 GHz, 3 GHz to 4 GHz and 4 GHz to 6 GHz.				



11.2. Test Procedure

The Following steps are used for each test position

1. Establish a call with the maximum output power with a base station simulator. The connection between the mobile and the base station simulator is established via air interface.
2. Measurement of the local E-field value at a fixed location. This value serves as a reference value for calculating a possible power drift.
3. Measurement of the SAR distribution with a grid of 8 to 16mm * 8 to 16 mm and a constant distance to the inner surface of the phantom. Since the sensors cannot directly measure at the inner phantom surface, the values between the sensors and the inner phantom surface are extrapolated. With these values the area of the maximum SAR is calculated by an interpolation scheme.
4. Around this point, a cube of 30 * 30 * 30 mm or 32 * 32 * 32 mm is assessed by measuring 5 or 8 * 5 or 8*4 or 5 mm. With these data, the peak spatial-average SAR value can be calculated.

11.3. Description of Interpolation/Extrapolation Scheme

The local SAR inside the phantom is measured using small dipole sensing elements inside a probe body. The probe tip must not be in contact with the phantom surface in order to minimize measurements errors, but the highest local SAR will occur at the surface of the phantom.

An extrapolation is using to determinate this highest local SAR values. The extrapolation is based on a fourth-order least-square polynomial fit of measured data. The local SAR value is then extrapolated from the liquid surface with a 1mm step.

The measurements have to be performed over a limited time (due to the duration of the battery) so the step of measurement is high. It could vary between 5 and 8 mm. To obtain an accurate assessment of the maximum SAR averaged over 10 grams and 1 gram requires a very fine resolution in the three dimensional scanned data array.

11.4. Wireless Router

Some battery-operated handsets have the capability to transmit and receive user through simultaneous transmission of WIFI simultaneously with a separate licensed transmitter. The FCC has provided guidance in FCC KDB Publication 941225 D06 v02r01 where SAR test considerations for handsets ($L \times W \geq 9 \text{ cm} \times 5 \text{ cm}$) are based on a composite test separation distance of 10 from the front, back and edges of the device containing transmitting antennas within 2.5cm of their edges, determined from general mixed use conditions for this type of devices. Since the hotspot SAR results may overlap with the



body-worn accessory SAR requirements, the more conservative configurations can be considered, thus excluding somebody-worn accessory SAR tests.

When the user enables the personal wireless router functions for the handset, actual operations include simultaneous transmission of both the WIFI transmitter and another licensed transmitter. Both transmitters often do not transmit at the same transmitting frequency and thus cannot be evaluated for SAR under actual use conditions due to the limitations of the SAR assessment probes. Therefore, SAR must be evaluated for each frequency transmission and mode separately and spatially summed with the WIFI transmitter according to FCC KDB Publication 447498 D01v06 publication procedures. The "Portable Hotspot" feature on the handset was NOT activated during SAR assessments, to ensure the SAR measurements were evaluated for a single transmission frequency RF signal at a time.



12. SAR Test Configuration

<GSM Mode>

A summary of these settings are illustrated below:

For GSM850 frequency band, the power control is set to 5 for GSM/GPRS mode (GSMK-CS1) and set to 8 for EDGE mode (MCS5); For GSM1900 frequency band, the power control is set to 0 for GSM/GPRS mode (GSMK-CS1) and set to 2 for EDGE mode (MCS5).

1. Per KDB 447498 D01v06, the maximum output power channel is used for SAR testing and for further SAR test reduction.
2. Per KDB 941225 D01v03r01, SAR test reduction for GSM / GPRS / EDGE modes is determined by the source-based time-averaged output power including tune-up tolerance. The mode with highest specified time-averaged output power should be tested for SAR compliance in the applicable exposure conditions. For modes with the same specified maximum output power and tolerance, the higher number time-slot configuration should be tested. Therefore, the GPRS (4Tx slots) for GSM850/GSM1900 is considered as the primary mode.
3. Other configurations of GSM / GPRS / EDGE are considered as secondary modes.

Timeslot consignations:

Remark:

1. The frame-averaged power is linearly reported the maximum burst averaged power over 8 time slots. The calculated method are shown as below:
The duty cycle "x" of different time slots as below:
1 TX slot is 1/8, 2 TX slots is 2/8, 3 TX slots is 3/8 and 4 TX slots is 4/8
Based on the calculation formula:
Frame-averaged power = Burst averaged power + 10 log (x)
So,
Frame-averaged power (1 TX slot) = Burst averaged power (1 TX slot)– 9.03
Frame-averaged power (2 TX slots) = Burst averaged power (2 TX slots)– 6.02
Frame-averaged power (3 TX slots) = Burst averaged power (3 TX slots)– 4.26
Frame-averaged power (4 TX slots) = Burst averaged power (4 TX slots) – 3.01
2. CS1 coding scheme was used in GPRS conducted power measurements and SAR testing, MCS5 coding scheme was used in EGPRS conducted power measurements and SAR testing (if necessary).

No. of Slots:	Slot 1	Slot 2	Slot 3	Slot 4
Slot Consignation:	1Up4Down	2Up3Down	3Up2Down	4Up1Down
Duty Cycle:	1:8.3	1:4.15	1:2.77	1:2.08
Correct Factor:	-9.03dB	-6.02dB	-4.26dB	-3.01dB



<WCDMA Mode>

Summary of UMTS conducted power measurement:

1. The 3G SAR test reduction procedure is applied, when the maximum output power and tune-up tolerance specified for production units in a secondary mode is $\leq \frac{1}{4}$ dB higher than the primary mode, SAR measurement is not required for the secondary mode.
2. The following tests were conducted according to the test requirements outlines in 3GPP TS 34.121 specification.
3. The procedures in KDB 941225 D01v03r01 are applied for 3GPP Rel. 6 HSPA to configure the device in the required sub-test mode(s) to determine SAR test exclusion.
4. For HSPA+ devices supporting 16 QAM in the uplink, power measurements procedure is according to the configurations in Table C.11.1.4 of 3GPP TS 34.121-1.
5. Per KDB 941225 D01v03r01, RMC 12.2kbps setting is used to evaluate SAR. The maximum output power and tune-up tolerance specified for production units in HSDPA / HSUPA / DC-HSDPA / HSPA+ is $\leq \frac{1}{4}$ dB higher than RMC 12.2Kbps or when the highest reported SAR of the RMC12.2Kbps is scaled by the ratio of specified maximum output power and tune-up tolerance of HSDPA / HSUPA / DC-HSDPA / HSPA+ to RMC12.2Kbps and the adjusted SAR is ≤ 1.2 W/kg, SAR measurement is not required for HSDPA / HSUPA / DC-HSDPA / HSPA+, and according to the following RF output power, the output power results of the secondary modes (HSDPA / HSUPA / DC-HSDPA / HSPA+) are less than $\frac{1}{4}$ dB higher than the primary modes; therefore, SAR measurement is not required for HSDPA / HSUPA / DC-HSDPA / HSPA+.
6. A fixed level power reduction is applied for WCDMA Band II when handset open Hotspot mode, the power reduction triggered.

HSDPA Setup Configuration

Sub-test	β_c	β_d	β_d (SF)	β_c/β_d	$\beta_{hr}^{(1)}$	CM (dB) ⁽²⁾
1	2/15	15/15	64	2/15	4/15	0.0
2	12/15 ⁽³⁾	15/15 ⁽³⁾	64	12/15 ⁽³⁾	24/15	1.0
3	15/15	8/15	64	15/8	30/15	1.5
4	15/15	4/15	64	15/4	30/15	1.5

Note 1: $\Delta_{ACK}, \Delta_{NACK}$ and $\Delta_{CQI} = 8 \Leftrightarrow A_{hr} = \beta_{hr}/\beta_c = 30/15 \Leftrightarrow \beta_{hr} = 30/15 * \beta_c$
 Note 2: CM = 1 for $\beta_c/\beta_d = 12/15, \beta_{hr}/\beta_c = 24/15$.
 Note 3: For subtest 2 the β_c/β_d ratio of 12/15 for the TFC during the measurement period (TF1, TF0) is achieved by setting the signaled gain factors for the reference TFC (TF1, TF1) to $\beta_c = 11/15$ and $\beta_d = 15/15$.

HSUPA Setup Configuration

Sub-test	β_c	β_d	β_d (SF)	β_c/β_d	$\beta_{hs}^{(1)}$	β_{ec}	β_{ed}	β_{ed} (SF)	β_{ed} (codes)	CM ⁽²⁾ (dB)	MPR (dB)	AG ⁽⁴⁾ Index	E-TFCI
1	11/15 ⁽³⁾	15/15 ⁽³⁾	64	11/15 ⁽³⁾	22/15	209/225	1039/225	4	1	1.0	0.0	20	75
2	6/15	15/15	64	6/15	12/15	12/15	94/75	4	1	3.0	2.0	12	67
3	15/15	9/15	64	15/9	30/15	30/15	$\beta_{ed1}: 47/15$ $\beta_{ed2}: 47/15$	4	2	2.0	1.0	15	92
4	2/15	15/15	64	2/15	4/15	2/15	56/75	4	1	3.0	2.0	17	71
5	15/15 ⁽⁴⁾	15/15 ⁽⁴⁾	64	15/15 ⁽⁴⁾	30/15	24/15	134/15	4	1	1.0	0.0	21	81

Note 1: $\Delta_{ACK}, \Delta_{NACK}$ and $\Delta_{CQI} = 8 \Leftrightarrow A_{hs} = \beta_{hs}/\beta_c = 30/15 \Leftrightarrow \beta_{hs} = 30/15 * \beta_c$.

Note 2: CM = 1 for $\beta_c/\beta_d = 12/15, \beta_{hs}/\beta_c = 24/15$. For all other combinations of DPDCH, DPCCH, HS-DPCCH, E-DPDCH and E-DPCCH the MPR is based on the relative CM difference.

Note 3: For subtest 1 the β_c/β_d ratio of 11/15 for the TFC during the measurement period (TF1, TF0) is achieved by setting the signaled gain factors for the reference TFC (TF1, TF1) to $\beta_c = 10/15$ and $\beta_d = 15/15$.

Note 4: For subtest 5 the β_c/β_d ratio of 15/15 for the TFC during the measurement period (TF1, TF0) is achieved by setting the signaled gain factors for the reference TFC (TF1, TF1) to $\beta_c = 14/15$ and $\beta_d = 15/15$.

Note 5: Testing UE using E-DPDCH Physical Layer category 1 Sub-test 3 is not required according to TS 25.306 Table 5.1g.

Note 6: β_{ed} cannot be set directly; it is set by Absolute Grant Value.

HSPA+ 3GPP release 7 (uplink category 7) 16QAM, Setup Configuration:
Table C.11.1.4: β values for transmitter characteristics tests with HS-DPCCH and E-DCH with 16QAM

Sub-test	β_c (Note3)	β_d	β_{HS} (Note1)	β_{ec}	β_{ed} (2xSF2) (Note 4)	β_{ed} (2xSF4) (Note 4)	CM (dB) (Note 2)	MPR (dB) (Note 2)	AG Index (Note 4)	E-TFCI (Note 5)	E-TFCI (boost)
1	1	0	30/15	30/15	$\beta_{ed1}: 30/15$ $\beta_{ed2}: 30/15$	$\beta_{ed3}: 24/15$ $\beta_{ed4}: 24/15$	3.5	2.5	14	105	105

Note 1: $\Delta_{ACK}, \Delta_{NACK}$ and $\Delta_{CQI} = 30/15$ with $\beta_{hs} = 30/15 * \beta_c$.

Note 2: CM = 3.5 and the MPR is based on the relative CM difference, MPR = MAX(CM-1,0).

Note 3: DPDCH is not configured, therefore the β_c is set to 1 and $\beta_d = 0$ by default.

Note 4: β_{ed} can not be set directly; it is set by Absolute Grant Value.

Note 5: All the sub-tests require the UE to transmit 2SF2+2SF4 16QAM EDCH and they apply for UE using E-DPDCH category 7. E-DCH TTI is set to 2ms TTI and E-DCH table index = 2. To support these E-DCH configurations DPDCH is not allocated. The UE is signaled to use the extrapolation algorithm.

**DC-HSDPA Setup Configuration**

The following tests were completed according to procedures in section 7.3.13 of 3GPP TS34.108 v9.5.0. A summary of these settings are illustrated below:

Downlink Physical Channels are set as per 3GPP TS34.121-1 v9.0.0 E.5.

Table E.5.0: Levels for HSDPA connection setup

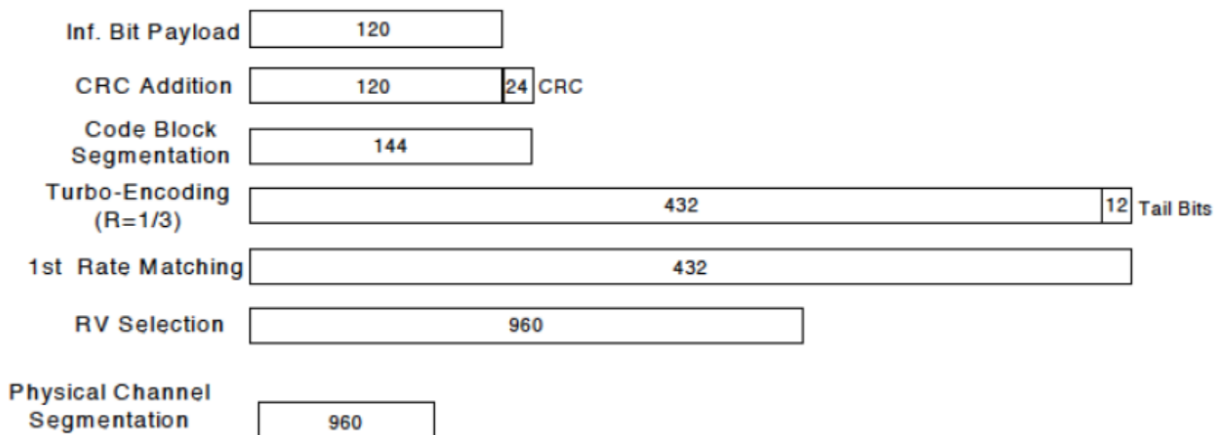
Parameter During Connection setup	Unit	Value
P-CPICH_Ec/Ior	dB	-10
P-CCPCH and SCH_Ec/Ior	dB	-12
PICH_Ec/Ior	dB	-15
HS-PDSCH	dB	off
HS-SCCH_1	dB	off
DPCH_Ec/Ior	dB	-5
OCNS_Ec/Ior	dB	-3.1

Call is set up as per 3GPP TS34.108 v9.5.0 sub clause 7.3.13

The configurations of the fixed reference channels for HSDPA RF tests are described in 3GPP TS 34.121, annex C for FDD and 3GPP TS 34.122.

Table C.8.1.12: Fixed Reference Channel H-Set 12

Parameter	Unit	Value
Nominal Avg. Inf. Bit Rate	kbps	60
Inter-TTI Distance	TTI's	1
Number of HARQ Processes	Processes	6
Information Bit Payload (N_{INF})	Bits	120
Number Code Blocks	Blocks	1
Binary Channel Bits Per TTI	Bits	960
Total Available SML's in UE	SML's	19200
Number of SML's per HARQ Proc.	SML's	3200
Coding Rate		0.15
Number of Physical Channel Codes	Codes	1
Modulation		QPSK
Note 1: The RMC is intended to be used for DC-HSDPA mode and both cells shall transmit with identical parameters as listed in the table. Note 2: Maximum number of transmission is limited to 1, i.e., retransmission is not allowed. The redundancy and constellation version 0 shall be used.		


Figure C.8.19: Coding rate for Fixed reference Channel H-Set 12 (QPSK)



<CDMA Mode>

1xEV-DO Rev. B

Call box setup procedure

1xEV-DO Release B

1> CMW 500 Signal Generator > 1xEV-DO Taskbar Enable

2> CMW 500 1xEV-DO Signaling Configuration Window >

3> 1xEV-DO Signaling On Window:

Under Access Network Control:

Band Class: BC0: US Cellular

RF Channel: 31

1xEV-DO Power: -70 dBm

4> 1xEV-DO Signaling Configuration Window

Under RF Frequency Band / Channel: Enter Ch. Frequency

➤ Under Carrier Configuration: RF Frequency
For Two Carriers: Low Channel (1013)

	<u>RF Channel</u>	<u>RF Channel Offset</u>
Carrier [0]	31	0
Carrier [1]	1013	982

➤ Under Carrier Configuration: RF Pilot

	<u>Carrier Sector</u>	<u>Active on AN</u>	<u>Assigned to AT</u>
Pilot [0]	C0/S0	✓	✓
	CA/S1	✓	✓

For Three Carriers: Low Channel (1013)

	<u>RF Channel</u>	<u>RF Channel Offset</u>
Carrier [0]	72	0
Carrier [1]	31	-41
Carrier [2]	1013	941

➤ Under Carrier Configuration: RF Pilot

	<u>Carrier Sector</u>	<u>Active on AN</u>	<u>Assigned to AT</u>
Pilot [0]	C0/S0	✓	✓
Pilot [1]	C1/S1	✓	✓
Pilot [2]	C2/S2	✓	✓



<LTE Mode>

LTE Target MPR level

The device implements maximum power reduction per 3GPP 36.101 requirements where the MPR target is as below table. The MPR settings are implemented configured into firmware and cannot be disabled by the end user or LTE carrier network.

Modulation	Channel bandwidth / Transmission bandwidth configuration [RB]						MPR	3GPP
	1.4	3.0	5	10	15	20	Target	MPR
	MHz	MHz	MHz	MHz	MHz	MHz	(dB)	(dB)
QPSK	> 5	> 4	> 8	> 12	> 16	> 18	1	≤ 1
16 QAM	≤ 5	≤ 4	≤ 8	≤ 12	≤ 16	≤ 18	1	≤ 1
64 QAM	> 5	> 4	> 8	> 12	> 16	> 18	2	≤ 2

Note: The measurement result showed some difference from the target MPR level, due to expected 0.5dB measurement tolerance

LTE Bands

LTE Bands	Channel bandwidth / Transmission bandwidth configuration [RB]					
	1.4	3.0	5	10	15	20
	MHz	MHz	MHz	MHz	MHz	MHz
2	v	v	v	v	v	v
4	v	v	v	v	v	v
5	v	v	v	v	N/A	N/A
7	N/A	N/A	v	v	v	v
26	v	v	v	v	v	N/A
38	N/A	N/A	v	v	v	v
40A	N/A	N/A	v	v	N/A	N/A
40B	N/A	N/A	v	v	N/A	N/A
41	N/A	N/A	v	v	v	v
66	v	v	v	v	v	v

Note:

1. Per KDB 941225 D05v02r05, when a properly configured base station simulator is used for the SAR and power measurements, spectrum plots for each RB allocation and offset configuration is not required.
2. Per KDB 941225 D05v02r05, start with the largest channel bandwidth and measure SAR for QPSK with 1 RB allocation, using the RB offset and required test channel combination with the highest maximum output power for RB offsets at the upper edge, middle and lower edge of each required test channel.
3. Per KDB 941225 D05v02r05, 50% RB allocation for QPSK SAR testing follows 1RB QPSK allocation procedure.
4. Per KDB 941225 D05v02r05, for QPSK with 100% RB allocation, SAR is not required when the



- highest maximum output power for 100 % RB allocation is less than the highest maximum output power in 50% and 1 RB allocations and the highest reported SAR for 1 RB and 50% RB allocation are ≤ 0.8 W/kg. Otherwise, SAR is measured for the highest output power channel; and if the reported SAR is > 1.45 W/kg, the remaining required test channels must also be tested.
5. Per KDB 941225 D05v02r05, 16QAM/64QAM output power for each RB allocation configuration is $>$ not $\frac{1}{2}$ dB higher than the same configuration in QPSK and the reported SAR for the QPSK configuration is ≤ 1.45 W/kg; Per KDB941225 D05v02r05, 16QAM/64QAM SAR testing is not required.
 6. Per KDB 941225 D05v02r05, smaller bandwidth output power for each RB allocation configuration is $>$ not $\frac{1}{2}$ Db higher than the same configuration in the largest supported bandwidth, and the reported SAR for the largest supported bandwidth is ≤ 1.45 W/kg; Per KDB 941225 D05v02r05, smaller bandwidth SAR testing is not required.
 7. For LTE B4 / B5 / B7 / B17 the maximum bandwidth does not support three non-overlapping channels, per KDB941225 D05v02r05, when a device supports overlapping channel assignment in a channel bandwidth configuration, the middle channel of the group of overlapping channels should be selected for testing.
 8. LTE band 2 / 4 / 17 SAR test was covered by Band 25 / 66 / 12; according to April 2015 TCB workshop, SAR test for overlapping LTE bands can be reduced if
 - a. The maximum output power, including tolerance, for the smaller band is \leq the larger band to qualify for the SAR test exclusion.
 - b. The channel bandwidth and other operating parameters for the smaller band are fully supported by the larger and.
 9. According to 2017 TCB workshop, for 64 QAM and 16 QAM should be verified by checking the signal constellation with a call box to avoid incorrect maximum power levels due to MPR and other requirements associated with signal modulation, and the following figure is taken from the "Fundamental Measurement >> Modulation Analysis >>constellation" mode of the device connect to the CMW500 base station, therefore, the device 64QAM and 16QAMsignal modulation are correct. Identify if Maximum Power Reduction (MPR) is optional or mandatory, i.e. built-in by design: only mandatory MPR may be considered during SAR testing, when the maximum output power is permanently limited by the MPR implemented within the UE; and only for the applicable RB (resource block) configurations specified in LTE standards: b) A-MPR (additional MPR) must be disabled.
 10. Per KDB 447498 D01v06, the reported SAR is the measured SAR value adjusted for maximum tune-up tolerance.
 - a. Tune-up scaling Factor = tune-up limit power (mW) / EUT RF power (mW), where tune-up limit is the maximum rated power among all production units.
 - b. For SAR testing of WLAN signal with non-100% duty cycle, the measured SAR is scaled-up by the duty cycle scaling factor which is equal to "1/(duty cycle)"
 - c. For WWAN: Reported SAR(W/kg)= Measured SAR(W/kg)*Tune-up Scaling Factor
 - d. For WLAN/Bluetooth: Reported SAR(W/kg)= Measured SAR(W/kg)* Duty Cycle scaling factor *



Tune-up scaling factor

- e. For TDD LTE SAR measurement, the duty cycle 1:1.59 (62.9 %) was used perform testing and considering the theoretical duty cycle of 63.3% for extended cyclic prefix in the uplink, and the theoretical duty cycle of 62.9% for normal cyclic prefix in uplink, a scaling factor of extended cyclic prefix $63.3\%/62.9\% = 1.006$ is applied to scale-up the measured SAR result. The Reported TDD LTE SAR = measured SAR (W/kg)* Tune-up Scaling Factor* scaling factor for extended cyclic prefix.
11. Per KDB 447498 D01v06, for each exposure position, testing of other required channels within the operating mode of a frequency band is not required when the reported 1-g or 10-g SAR for the mid-band or highest output power channel is: ≤ 0.8 W/kg or 2.0 W/kg, for 1-g or 10-g respectively, when the transmission band is ≤ 100 MHz ≤ 0.6 W/kg or 1.5 W/kg, for 1-g or 10-g respectively, when the transmission band is between 100 MHz and 200 MHz ≤ 0.4 W/kg or 1.0 W/kg, for 1-g or 10-g respectively, when the transmission band is ≥ 200 MHz
12. Per KDB 865664 D01v01r04, for each frequency band, repeated SAR measurement is required only when the measured SAR is ≥ 0.8 W/kg.
13. Per KDB 648474 D04v01r03, when the reported SAR for a body-worn accessory measured without a headset connected to the handset is ≤ 1.2 W/kg, SAR testing with a headset connected to the handset is not required.

<WLAN 2.4GHz>

1. SAR is measured for 2.4 GHz 802.11b DSSS using either the fixed test position or, when applicable, the initial test position procedure. SAR test reduction is determined according to the following:
- When the reported SAR of the highest measured maximum output power channel for the exposure configuration is ≤ 0.8 W/kg, no further SAR testing is required for 802.11b DSSS in that exposure configuration.
 - When the reported SAR is > 0.8 W/kg, SAR is required for that position using the next highest measured output power channel. When any reported SAR is > 1.2 W/kg, SAR is required for the third channel; i.e., all channels require testing.
2. 2.4 GHz 802.11 g/n OFDM are additionally evaluated for SAR if the highest reported SAR for 802.11b, adjusted by the ratio of the OFDM to DSSS specified maximum output power, is > 1.2 W/kg. When SAR is required for OFDM modes in 2.4 GHz band, the Initial Test configuration Procedures should be followed.
3. For held-to-ear and hotspot operations, the initial test position procedures were applied. The test position with the highest extrapolated peak SAR will be used as the initial test position. When reported SAR for the initial test position is ≤ 0.4 W/kg, no additional testing for the remaining test positions was required. Otherwise, SAR is evaluated at the subsequent highest peak SAR positions until the reported SAR result is ≤ 0.8 W/kg or all test positions are measured.
4. Justification for test configurations for WLAN per KDB Publication 248227 D02DR02-41929 for 2.4 GHz WI-FI single transmission chain operations, the highest measured maximum output power channel for DSSS was selected for SAR measurement. SAR for OFDM modes (2.4 GHz 802.11g/n)



was not required due to the maximum allowed powers and the highest reported DSSSSAR.

5. A fixed level power reduction is applied for WiFi when handset operates "held to the body" condition or "held to the ear" condition, the power reduction triggered by audio receiver detection and call establish status.
6. Per KDB 248227 D01v02r02, In the 2.4 GHz band, separate SAR procedures are applied to DSSS and OFDM configurations to simplify DSSS test requirements. SAR is not required for the following 2.4 GHz OFDM conditions:
 - a. When KDB Publication 447498 SAR test exclusion applies to the OFDM configuration.
 - b. When the highest reported SAR for DSSS is adjusted by the ratio of OFDM to DSSS specified maximum output power and the adjusted SAR is ≤ 1.2 W/kg.

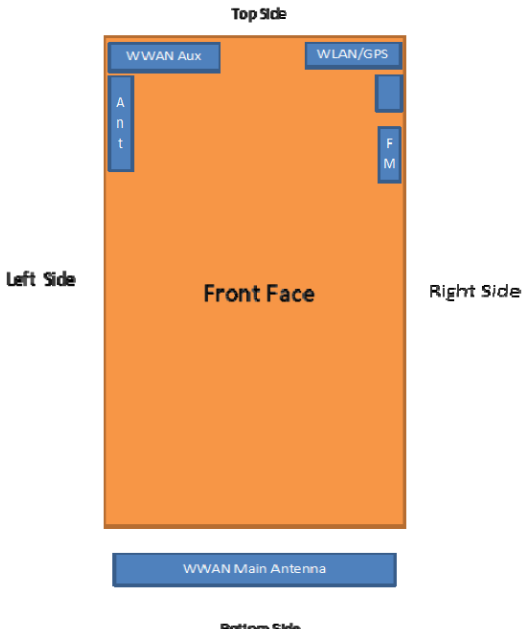


13. Conducted RF Output Power

Remark: The output power of GSM/WCDMA/LTE/WLAN/Bluetooth refers to the annex E of this report.

14. Hot-Spot Mode Evaluation Procedure

➤ EUT Antenna Location

	WWAN Aux Antenna supported TX bands: GSM 850/1900 UMTS Band II/IV/V FDD LTE Band 2/4/5/7/26/66 TDD LTE Band 38/40A/40B/41 WWAN Main Antenna supported TX bands: GSM 850/1900 UMTS Band II/IV/V FDD LTE Band 2/4/5/7/26/66 TDD LTE Band 38/40A/40B/41 WLAN antenna supported bands: 2.4GHz BT antenna supported bands: 2.4GHz
--	---

➤ EUT Antenna Distance

Antenna Location	Front	Back	Left	Right	Top	Bottom
WWAN Aux Antenna	<5mm	<5mm	<5mm	>25mm	<5mm	156 mm
WWAN Main Antenna	<5mm	<5mm	<5mm	<5mm	156mm	<5mm
WLAN/BT Antenna	<5mm	<5mm	>25mm	<5mm	<5mm	155mm

➤ Hotspot Evaluation

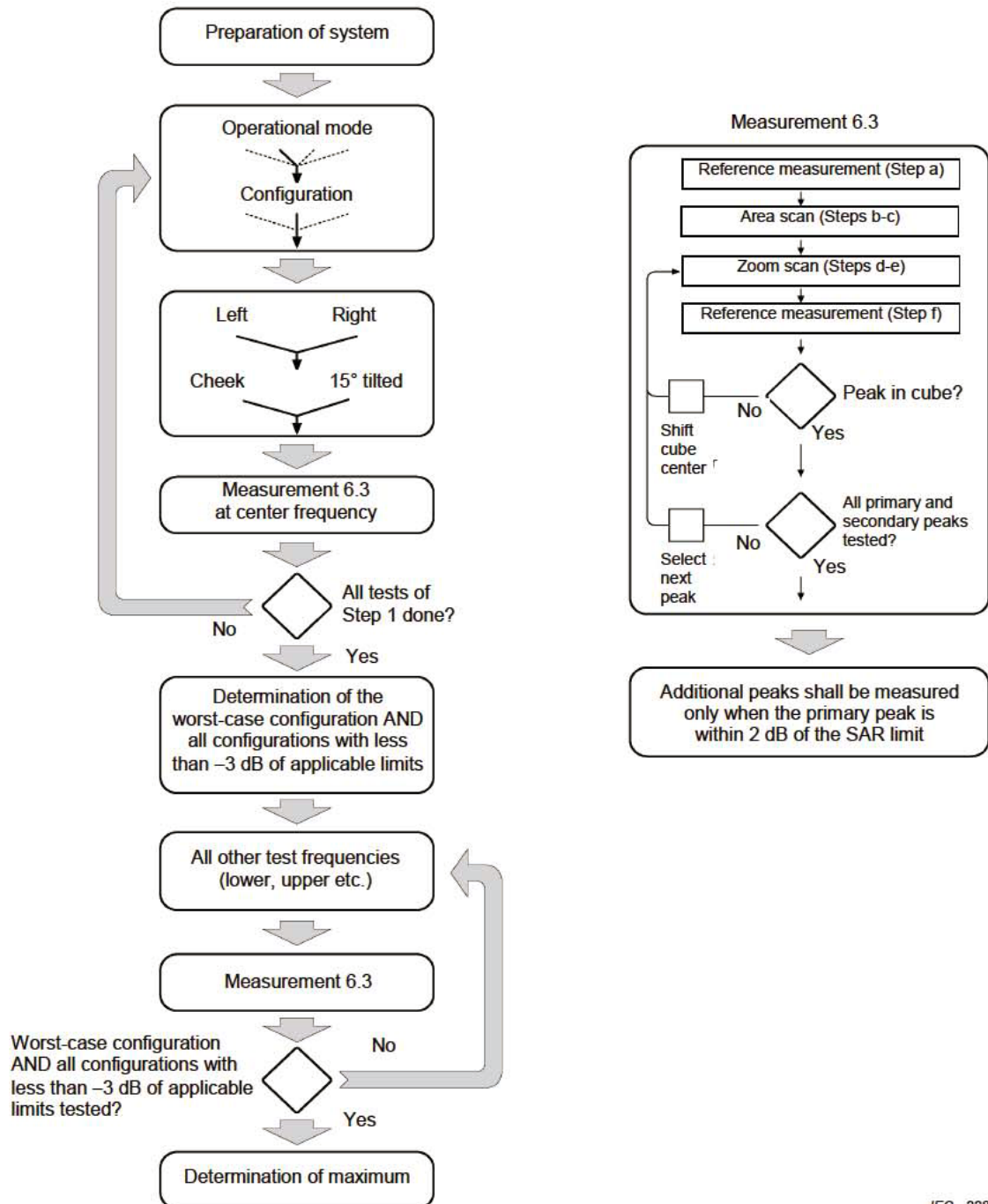
Assessment	Hotspot side for SAR Test distance: 10mm					
Antennas	Front	Back	Left	Right	Top	Bottom
WWAN Aux Antenna	Yes	Yes	Yes	No	Yes	No
WWAN Main Antenna	Yes	Yes	Yes	Yes	No	Yes
WLAN/BT Antenna	Yes	Yes	No	Yes	Yes	No

Note :

- The SAR evaluation procedures for Portable Devices with Wireless Router function is according to KDB 941225 D06 Hotspot SAR v02r01.
- Head/Body-worn/Hotspot mode SAR assessments are required.
- Referring to KDB 941225 D06, when the overall device length and width are $\geq 9\text{cm} \times 5\text{cm}$, the test distance is 10 mm. SAR must be measured for all sides and surfaces with a transmitting antenna located within 25mm from that surface or edge.

15. Block Diagram of the Tests to be Performed

15.1. Head



IEC 228/05

15.2. Body

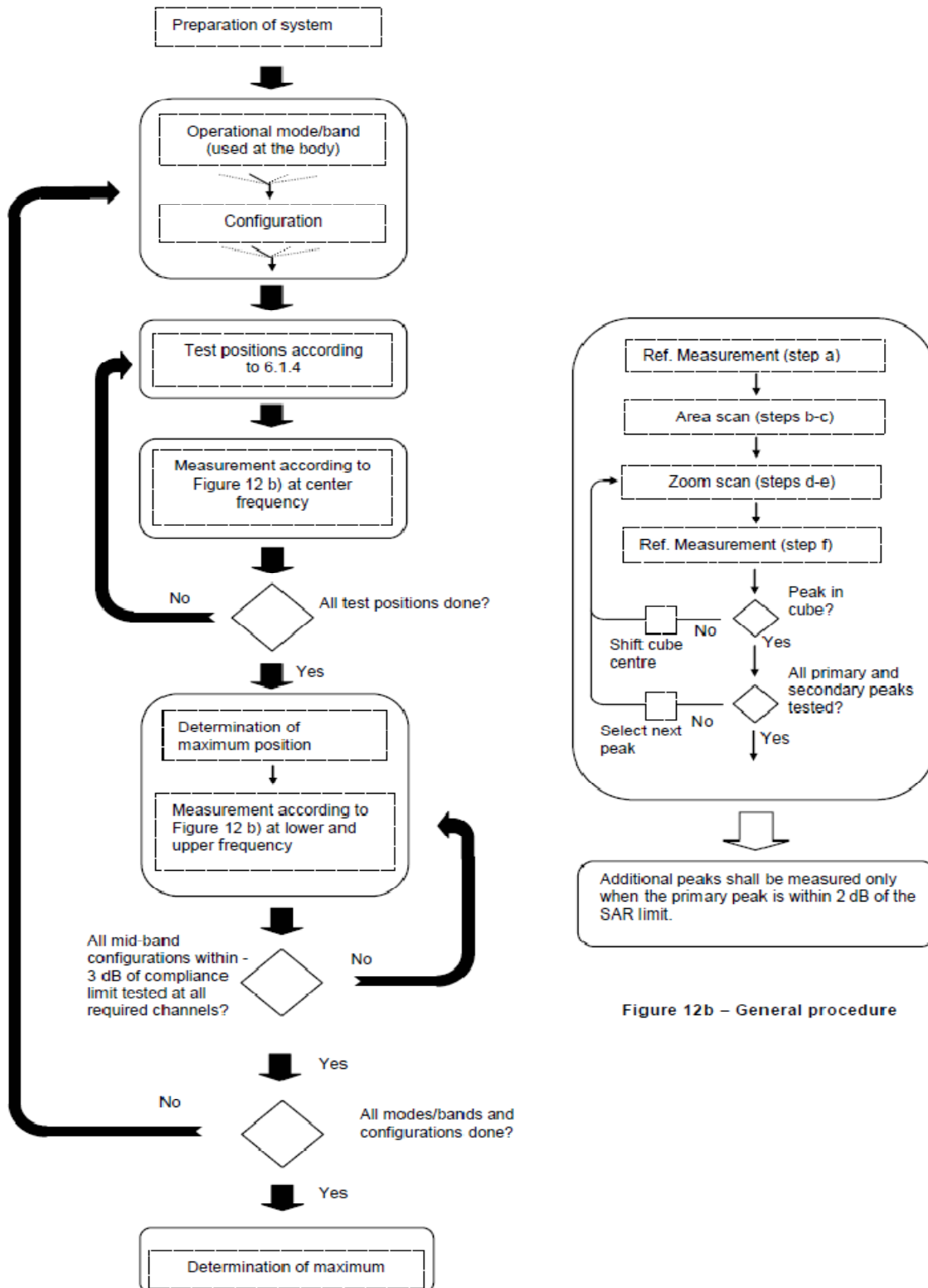


Figure 12b – General procedure



16. Test Results List

16.1. Test Guidance

1. Per KDB 447498 D01v06, the reported SAR is the measured SAR value adjusted for maximum tune-up tolerance.
 - a. Tune-up scaling Factor = tune-up limit power (mW) / EUT RF power (mW), where tune-up limit is the maximum rated power among all production units.
 - b. For SAR testing of WLAN signal with non-100% duty cycle, the measured SAR is scaled-up by the duty cycle scaling factor which is equal to "1/(duty cycle)".
 - c. For WWAN: Reported SAR(W/kg)= Measured SAR(W/kg)*Tune-up Scaling Factor.
 - d. For WLAN/Bluetooth: Reported SAR(W/kg)= Measured SAR(W/kg)* Duty Cycle scaling factor * Tune-up scaling factor.
2. Per KDB 447498 D01v06, for each exposure position, testing of other required channels within the operating mode of a frequency band is not required when the *reported* 1-g or 10-g SAR for the mid-band or highest output power channel is:
 - a. ≤ 0.8 W/kg or 2.0 W/kg, for 1-g or 10-g respectively, when the transmission band is ≤ 100 MHz
 - b. ≤ 0.6 W/kg or 1.5 W/kg, for 1-g or 10-g respectively, when the transmission band is between 100 MHz and 200 MHz
 - c. ≤ 0.4 W/kg or 1.0 W/kg, for 1-g or 10-g respectively, when the transmission band is ≥ 200 MHz
3. Per KDB 865664 D01v01r04, for each frequency band, repeated SAR measurement is required only when the measured SAR is ≥ 0.8 W/kg.
4. Per KDB 648474 D04v01r03, when the reported SAR for a body-worn accessory measured without a headset connected to the handset is ≤ 1.2 W/kg, SAR testing with a headset connected to the handset is not required.
5. Per KDB648474 D04v01r03, for smart phones with a display diagonal dimension > 15.0 cm or an overall diagonal dimension > 16.0 cm, when hotspot mode applies, 10-g extremity SAR is required only for the surfaces and edges with hotspot mode 1-g reported SAR > 1.2 W/kg, however, when power reduction applies to hotspot mode the measured SAR must be scaled to the maximum output power, including tolerance, allowed for tablet modes to compare with the 1.2 W/kg SAR test reduction threshold.
6. Per KDB248227 D01v02r02, a Wi-Fi device must be configured to transmit continuously at the required data rate, channel bandwidth and signal modulation, using the highest transmission duty factor supported by the test mode tools for SAR measurement. The test frequencies established using test mode must correspond to the actual channel frequencies required for operations in the U.S. When 802.11 frame gaps are accounted for in the transmission, a maximum transmission duty factor of 92 - 96% is typically achievable in most test mode configurations. A minimum transmission duty factor of 85% is required to avoid certain hardware and device implementation issues related to wide range SAR scaling. In addition, a periodic transmission duty factor is required for current



generation SAR systems to measure SAR correctly. Unless it is permitted by specific KDB procedures or continuous transmission is specifically restricted by the device, the reported SAR must be scaled to 100% transmission duty factor to determine compliance at the maximum tune-up tolerance limit. When a device is not capable of sustaining continuous transmission or the output can become nonlinear, and it is limited by hardware design and unable to transmit at higher than 85% duty factor, a periodic duty factor within 15% of the maximum duty factor the device is capable of transmitting should be used. The reported SAR must be scaled to the maximum transmission duty factor to determine compliance. Descriptions of the procedures applied to establish the specific duty factor used for SAR testing are required in SAR reports to support the test results.

7. For TDD-LTE Band 40, the entire band is unable to be used that as per 27.5; only 2 paired block (2305 to 2315MHz, 2350 to 2360MHz) are allowed with regards to "TDD" operation. the channel allocation, and bandwidth covert to test channels shall be re-adjusted; furthermore, as per 27.50, the duty cycle must be adjusted that TDD in this band must not exceed 38%. Before testing, the special combination must be set in the base station before the periodic measurement can be carried out.
8. The EUT respectively defined the top and bottom antenna maximum power in the software, both of them will switch automatically according to the receiver signal strength and maximum transmission power level.
9. In general, the full power is applied to the top and bottom antenna, however:
 - 1) Firstly, judge the state of the mobile phone. If the network of the mobile phone has no link registration, the RF power will be transmitted at full power.
 - 2) After the mobile phone is connected, the GPIO port is used to detect whether RF wireless conduction is being tested. If so, the corresponding conduction power will be called; If conduction is not tested, the next scene earpiece judgment is performed.
 - 3) If earpiece is turned on, the RF power corresponding to the down head SAR will be called. If earpiece is turned off, WiFi hotspot judgment of the next scene will be performed.
 - 4) If WiFi hotspot is enabled, the RF power in WiFi hotspot scenario is invoked. If it is disabled, the body SAR scenario is judged.
 - 5) If the mobile phone is connected to the network and there is no test conduction, earpiece is closed and WIFI hotspot is also closed, then the body SAR will be strongly lowered and the RF power in the body SAR scenario will be called.
 - 6) If the call status does not change, continue to invoke the power. If the call status changes, you need to start a new judgment.
10. The manufacturer has internal regulations for SAR and needs to be controlled below 0.8W/kg. The manufacturer has made predictions and power reduction is carried out for the parts that exceed the internal regulations.



16.2. Head SAR Data

➤ GSM Head SAR

Plot No.	Band/Mode	Test Position	CH.	Ave. Power (dBm)	Tune-up Limit (dBm)	Tune-up Scaling Factor	Meas. SAR _{1g} (W/kg)	Reported SAR _{1g} (W/kg)
Top Ant. (Reduction power)								
1#	GPRS 850(4 TX slots)	Right Cheek	251	26.71	28.00	1.346	0.341	0.459
	GPRS 850(4 TX slots)	Right Tilt	251	26.71	28.00	1.346	0.278	0.374
	GPRS 850(4 TX slots)	Left Cheek	251	26.71	28.00	1.346	0.293	0.394
	GPRS 850(4 TX slots)	Left Tilt	251	26.71	28.00	1.346	0.238	0.320
Bottom Ant. (Full power)								
	GPRS 850(4 TX slots)	Right Cheek	251	27.10	28.00	1.230	0.163	0.201
	GPRS 850(4 TX slots)	Right Tilt	251	27.10	28.00	1.230	0.078	0.096
	GPRS 850(4 TX slots)	Left Cheek	251	27.10	28.00	1.230	0.155	0.191
	GPRS 850(4 TX slots)	Left Tilt	251	27.10	28.00	1.230	0.076	0.093
Top Ant. (Reduction power)								
2#	GPRS 1900(3 TX slots)	Right Cheek	810	21.68	22.00	1.076	0.485	0.522
	GPRS 1900(3 TX slots)	Right Tilt	810	21.68	22.00	1.076	0.387	0.417
	GPRS 1900(3 TX slots)	Left Cheek	810	21.68	22.00	1.076	0.270	0.291
	GPRS 1900(3 TX slots)	Left Tilt	810	21.68	22.00	1.076	0.316	0.340
Bottom Ant. (Reduction power)								
	GPRS 1900(3 TX slots)	Right Cheek	810	21.81	23.00	1.315	0.025	0.033
	GPRS 1900(3 TX slots)	Right Tilt	810	21.81	23.00	1.315	0.018	0.024
	GPRS 1900(3 TX slots)	Left Cheek	810	21.81	23.00	1.315	0.026	0.034
	GPRS 1900(3 TX slots)	Left Tilt	810	21.81	23.00	1.315	0.010	0.013



➤ **WCDMA Head SAR**

Plot No.	Band/Mode	Test Position	CH.	Ave. Power (dBm)	Tune-up Limit (dBm)	Tune-up Scaling Factor	Meas. SAR _{1g} (W/kg)	Reported SAR _{1g} (W/kg)
Top Ant. (Reduction power)								
3#	Band II/RMC	Right Cheek	9262	18.21	19.00	1.199	0.491	0.589
	Band II/RMC	Right Tilt	9262	18.21	19.00	1.199	0.443	0.531
	Band II/RMC	Left Cheek	9262	18.21	19.00	1.199	0.295	0.354
	Band II/RMC	Left Tilt	9262	18.21	19.00	1.199	0.389	0.467
Bottom Ant. (Reduction power)								
	Band II/RMC	Right Cheek	9262	18.88	20.00	1.294	0.019	0.025
	Band II/RMC	Right Tilt	9262	18.88	20.00	1.294	0.013	0.017
	Band II/RMC	Left Cheek	9262	18.88	20.00	1.294	0.025	0.033
	Band II/RMC	Left Tilt	9262	18.88	20.00	1.294	0.016	0.021
Top Ant. (Reduction power)								
	Band IV/RMC	Right Cheek	1312	18.19	19.50	1.352	0.300	0.405
4#	Band IV/RMC	Right Tilt	1312	18.19	19.50	1.352	0.402	0.544
	Band IV/RMC	Left Cheek	1312	18.19	19.50	1.352	0.168	0.227
	Band IV/RMC	Left Tilt	1312	18.19	19.50	1.352	0.198	0.268
Bottom Ant. (Reduction power)								
	Band IV/RMC	Right Cheek	1312	18.31	19.00	1.172	0.009	0.011
	Band IV/RMC	Right Tilt	1312	18.31	19.00	1.172	0.007	0.008
	Band IV/RMC	Left Cheek	1312	18.31	19.00	1.172	0.007	0.009
	Band IV/RMC	Left Tilt	1312	18.31	19.00	1.172	0.006	0.007
Top Ant. (Full power)								
5#	Band V/RMC	Right Cheek	4182	24.74	25.50	1.191	0.480	0.572
	Band V/RMC	Right Tilt	4182	24.74	25.50	1.191	0.375	0.447
	Band V/RMC	Left Cheek	4182	24.74	25.50	1.191	0.353	0.421
	Band V/RMC	Left Tilt	4182	24.74	25.50	1.191	0.280	0.334
Bottom Ant. (Full power)								
	Band V/RMC	Right Cheek	4132	24.77	25.50	1.183	0.173	0.205
	Band V/RMC	Right Tilt	4132	24.77	25.50	1.183	0.112	0.133
	Band V/RMC	Left Cheek	4132	24.77	25.50	1.183	0.153	0.181
	Band V/RMC	Left Tilt	4132	24.77	25.50	1.183	0.078	0.092



➤ LTE QPSK Head SAR

Plot No.	Band/Mode	Test Position	CH.	Ave. Power (dBm)	Tune-up Limit (dBm)	Tune-up Scaling Factor	Meas. SAR _{1g} (W/kg)	Reported SAR _{1g} (W/kg)
Top Ant. (Reduction power)								
	LTE Band 2/1RB#0 20M	Right Cheek	18900	17.99	19.00	1.262	0.470	0.593
	LTE Band 2/1RB#0 20M	Right Tilt	18900	17.99	19.00	1.262	0.405	0.511
	LTE Band 2/1RB#0 20M	Left Cheek	18900	17.99	19.00	1.262	0.253	0.319
	LTE Band 2/1RB#0 20M	Left Tilt	18900	17.99	19.00	1.262	0.381	0.480
Bottom Ant. (Reduction power)								
6#	LTE Band 2/50RB#0 20M	Right Cheek	18900	17.81	18.50	1.172	0.513	0.601
	LTE Band 2/50RB#0 20M	Right Tilt	18900	17.81	18.50	1.172	0.443	0.519
	LTE Band 2/50RB#0 20M	Left Cheek	18900	17.81	18.50	1.172	0.282	0.330
	LTE Band 2/50RB#0 20M	Left Tilt	18900	17.81	18.50	1.172	0.411	0.482
Top Ant. (Full power)								
	LTE Band 2/1RB#0 20M	Right Cheek	18900	19.32	20.00	1.169	0.023	0.027
	LTE Band 2/1RB#0 20M	Right Tilt	18900	19.32	20.00	1.169	0.010	0.012
	LTE Band 2/1RB#0 20M	Left Cheek	18900	19.32	20.00	1.169	0.014	0.016
	LTE Band 2/1RB#0 20M	Left Tilt	18900	19.32	20.00	1.169	0.004	0.005
Bottom Ant. (Full power)								
	LTE Band 2/50RB#0 20M	Right Cheek	18900	18.98	19.50	1.127	0.022	0.025
	LTE Band 2/50RB#0 20M	Right Tilt	18900	18.98	19.50	1.127	0.010	0.011
	LTE Band 2/50RB#0 20M	Left Cheek	18900	18.98	19.50	1.127	0.016	0.018
	LTE Band 2/50RB#0 20M	Left Tilt	18900	18.98	19.50	1.127	0.006	0.007
Top Ant. (Reduction power)								
7#	LTE Band 5/1RB#0 10M	Right Cheek	20525	24.33	25.00	1.167	0.386	0.450
	LTE Band 5/1RB#0 10M	Right Tilt	20525	24.33	25.00	1.167	0.306	0.357
	LTE Band 5/1RB#0 10M	Left Cheek	20525	24.33	25.00	1.167	0.321	0.375
	LTE Band 5/1RB#0 10M	Left Tilt	20525	24.33	25.00	1.167	0.226	0.264
Bottom Ant. (Reduction power)								
	LTE Band 5/25RB#0 10M	Right Cheek	20525	23.28	24.00	1.180	0.304	0.359
	LTE Band 5/25RB#0 10M	Right Tilt	20525	23.28	24.00	1.180	0.250	0.295
	LTE Band 5/25RB#0 10M	Left Cheek	20525	23.28	24.00	1.180	0.252	0.297
	LTE Band 5/25RB#0 10M	Left Tilt	20525	23.28	24.00	1.180	0.191	0.225
Bottom Ant. (Full power)								
	LTE Band 5/1RB#0 10M	Right Cheek	20525	24.44	25.00	1.138	0.135	0.154
	LTE Band 5/1RB#0 10M	Right Tilt	20525	24.44	25.00	1.138	0.098	0.111
	LTE Band 5/1RB#0 10M	Left Cheek	20525	24.44	25.00	1.138	0.125	0.142



	LTE Band 5/1RB#0 10M	Left Tilt	20525	24.44	25.00	1.138	0.087	0.099
	LTE Band 5/25RB#0 10M	Right Cheek	20525	23.49	24.00	1.125	0.111	0.125
	LTE Band 5/25RB#0 10M	Right Tilt	20525	23.49	24.00	1.125	0.082	0.092
	LTE Band 5/25RB#0 10M	Left Cheek	20525	23.49	24.00	1.125	0.098	0.110
	LTE Band 5/25RB#0 10M	Left Tilt	20525	23.49	24.00	1.125	0.062	0.070
Top Ant. (Reduction power)								
	LTE Band 7/1RB#0 20M	Right Cheek	21100	18.56	19.50	1.242	0.327	0.406
8#	LTE Band 7/1RB#0 20M	Right Tilt	21100	18.56	19.50	1.242	0.441	0.548
	LTE Band 7/1RB#0 20M	Left Cheek	21100	18.56	19.50	1.242	0.275	0.341
	LTE Band 7/1RB#0 20M	Left Tilt	21100	18.56	19.50	1.242	0.297	0.369
	LTE Band 7/50RB#0 20M	Right Cheek	21100	18.28	19.00	1.180	0.355	0.419
	LTE Band 7/50RB#0 20M	Right Tilt	21100	18.28	19.00	1.180	0.456	0.538
	LTE Band 7/50RB#0 20M	Left Cheek	21100	18.28	19.00	1.180	0.305	0.360
	LTE Band 7/50RB#0 20M	Left Tilt	21100	18.28	19.00	1.180	0.343	0.405
Bottom Ant. (Reduction power)								
	LTE Band 7/1RB#0 20M	Right Cheek	21100	21.85	23.00	1.303	0.057	0.074
	LTE Band 7/1RB#0 20M	Right Tilt	21100	21.85	23.00	1.303	0.049	0.064
	LTE Band 7/1RB#0 20M	Left Cheek	21100	21.85	23.00	1.303	0.070	0.092
	LTE Band 7/1RB#0 20M	Left Tilt	21100	21.85	23.00	1.303	0.066	0.087
	LTE Band 7/50RB#0 20M	Right Cheek	21100	21.60	22.00	1.096	0.065	0.071
	LTE Band 7/50RB#0 20M	Right Tilt	21100	21.60	22.00	1.096	0.049	0.054
	LTE Band 7/50RB#0 20M	Left Cheek	21100	21.60	22.00	1.096	0.073	0.080
	LTE Band 7/50RB#0 20M	Left Tilt	21100	21.60	22.00	1.096	0.076	0.083
Top Ant. (Full power)								
9#	LTE Band 26/1RB#0 15M	Right Cheek	26865	24.20	25.00	1.202	0.365	0.439
	LTE Band 26/1RB#0 15M	Right Tilt	26865	24.20	25.00	1.202	0.293	0.352
	LTE Band 26/1RB#0 15M	Left Cheek	26865	24.20	25.00	1.202	0.299	0.359
	LTE Band 26/1RB#0 15M	Left Tilt	26865	24.20	25.00	1.202	0.226	0.272
	LTE Band 26/36RB#0 15M	Right Cheek	26865	23.41	24.00	1.146	0.306	0.351
	LTE Band 26/36RB#0 15M	Right Tilt	26865	23.41	24.00	1.146	0.240	0.275
	LTE Band 26/36RB#0 15M	Left Cheek	26865	23.41	24.00	1.146	0.245	0.281
	LTE Band 26/36RB#0 15M	Left Tilt	26865	23.41	24.00	1.146	0.191	0.219
Bottom Ant. (Full power)								
	LTE Band 26/1RB#0 15M	Right Cheek	26865	24.25	25.00	1.189	0.107	0.127



	LTE Band 26/1RB#0 15M	Right Tilt	26865	24.25	25.00	1.189	0.088	0.105
	LTE Band 26/1RB#0 15M	Left Cheek	26865	24.25	25.00	1.189	0.100	0.119
	LTE Band 26/1RB#0 15M	Left Tilt	26865	24.25	25.00	1.189	0.075	0.089
	LTE Band 26/36RB#0 15M	Right Cheek	26865	23.47	24.00	1.130	0.090	0.102
	LTE Band 26/36RB#0 15M	Right Tilt	26865	23.47	24.00	1.130	0.071	0.080
	LTE Band 26/36RB#0 15M	Left Cheek	26865	23.47	24.00	1.130	0.084	0.095
	LTE Band 26/36RB#0 15M	Left Tilt	26865	23.47	24.00	1.130	0.062	0.070
Top Ant. (Reduction power)								
	LTE Band 38/1RB#0 20M	Right Cheek	38000	20.72	21.50	1.197	0.208	0.250
	LTE Band 38/1RB#0 20M	Right Tilt	38000	20.72	21.50	1.197	0.283	0.341
	LTE Band 38/1RB#0 20M	Left Cheek	38000	20.72	21.50	1.197	0.166	0.200
	LTE Band 38/1RB#0 20M	Left Tilt	38000	20.72	21.50	1.197	0.211	0.254
	LTE Band 38/50RB#0 20M	Right Cheek	38000	20.40	21.00	1.148	0.227	0.262
10#	LTE Band 38/50RB#0 20M	Right Tilt	38000	20.40	21.00	1.148	0.296	0.342
	LTE Band 38/50RB#0 20M	Left Cheek	38000	20.40	21.00	1.148	0.180	0.208
	LTE Band 38/50RB#0 20M	Left Tilt	38000	20.40	21.00	1.148	0.227	0.262
Bottom Ant. (Full power)								
	LTE Band 38/1RB#0 20M	Right Cheek	38000	23.02	24.00	1.253	0.031	0.039
	LTE Band 38/1RB#0 20M	Right Tilt	38000	23.02	24.00	1.253	0.033	0.041
	LTE Band 38/1RB#0 20M	Left Cheek	38000	23.02	24.00	1.253	0.047	0.059
	LTE Band 38/1RB#0 20M	Left Tilt	38000	23.02	24.00	1.253	0.038	0.048
	LTE Band 38/50RB#0 20M	Right Cheek	38000	22.49	23.00	1.125	0.023	0.026
	LTE Band 38/50RB#0 20M	Right Tilt	38000	22.49	23.00	1.125	0.028	0.031
	LTE Band 38/50RB#0 20M	Left Cheek	38000	22.49	23.00	1.125	0.041	0.047
	LTE Band 38/50RB#0 20M	Left Tilt	38000	22.49	23.00	1.125	0.034	0.038
Top Ant. (Reduction power)								
	LTE Band 40A/1RB#0 10M	Right Cheek	38750	21.38	22.00	1.153	0.370	0.419
11#	LTE Band 40A/1RB#0 10M	Right Tilt	38750	21.38	22.00	1.153	0.536	0.622
	LTE Band 40A/1RB#0 10M	Left Cheek	38750	21.38	22.00	1.153	0.279	0.324
	LTE Band 40A/1RB#0 10M	Left Tilt	38750	21.38	22.00	1.153	0.300	0.348
	LTE Band 40A/25RB#0 10M	Right Cheek	38750	21.00	21.50	1.122	0.375	0.423
	LTE Band 40A/25RB#0 10M	Right Tilt	38750	21.00	21.50	1.122	0.548	0.619
	LTE Band 40A/25RB#0 10M	Left Cheek	38750	21.00	21.50	1.122	0.283	0.319
	LTE Band 40A/25RB#0 10M	Left Tilt	38750	21.00	21.50	1.122	0.309	0.349



Bottom Ant. (Full power)								
	LTE Band 40A/1RB#0 10M	Right Cheek	38750	23.05	24.00	1.245	0.219	0.246
	LTE Band 40A/1RB#0 10M	Right Tilt	38750	23.05	24.00	1.245	0.021	0.026
	LTE Band 40A/1RB#0 10M	Left Cheek	38750	23.05	24.00	1.245	0.021	0.026
	LTE Band 40A/1RB#0 10M	Left Tilt	38750	23.05	24.00	1.245	0.028	0.035
	LTE Band 40A/25RB#0 10M	Right Cheek	38750	22.52	23.00	1.117	0.017	0.019
	LTE Band 40A/25RB#0 10M	Right Tilt	38750	22.52	23.00	1.117	0.017	0.019
	LTE Band 40A/25RB#0 10M	Left Cheek	38750	22.52	23.00	1.117	0.017	0.019
	LTE Band 40A/25RB#0 10M	Left Tilt	38750	22.52	23.00	1.117	0.022	0.024
Top Ant. (Reduction power)								
	LTE Band 40B/1RB#0 10M	Right Cheek	39200	21.41	22.00	1.146	0.399	0.448
12#	LTE Band 40B/1RB#0 10M	Right Tilt	39200	21.41	22.00	1.146	0.527	0.607
	LTE Band 40B/1RB#0 10M	Left Cheek	39200	21.41	22.00	1.146	0.302	0.348
	LTE Band 40B/1RB#0 10M	Left Tilt	39200	21.41	22.00	1.146	0.309	0.356
	LTE Band 40B/25RB#0 10M	Right Cheek	39200	21.03	21.50	1.114	0.385	0.433
	LTE Band 40B/25RB#0 10M	Right Tilt	39200	21.03	21.50	1.114	0.517	0.580
	LTE Band 40B/25RB#0 10M	Left Cheek	39200	21.03	21.50	1.114	0.293	0.328
	LTE Band 40B/25RB#0 10M	Left Tilt	39200	21.03	21.50	1.114	0.319	0.358
Bottom Ant. (Full power)								
	LTE Band 40B/1RB#0 10M	Right Cheek	39200	23.02	24.00	1.253	0.026	0.029
	LTE Band 40B/1RB#0 10M	Right Tilt	39200	23.02	24.00	1.253	0.025	0.031
	LTE Band 40B/1RB#0 10M	Left Cheek	39200	23.02	24.00	1.253	0.022	0.027
	LTE Band 40B/1RB#0 10M	Left Tilt	39200	23.02	24.00	1.253	0.029	0.036
	LTE Band 40B/25RB#0 10M	Right Cheek	39200	22.42	23.00	1.143	0.019	0.022
	LTE Band 40B/25RB#0 10M	Right Tilt	39200	22.42	23.00	1.143	0.018	0.020
	LTE Band 40B/25RB#0 10M	Left Cheek	39200	22.42	23.00	1.143	0.016	0.018
	LTE Band 40B/25RB#0 10M	Left Tilt	39200	22.42	23.00	1.143	0.022	0.025
Top Ant. (Full power)								
13#	LTE Band 41/1RB#0 20M	Right Cheek	40640	23.06	24.00	1.242	0.326	0.407
	LTE Band 41/1RB#0 20M	Right Tilt	40640	23.06	24.00	1.242	0.239	0.299
	LTE Band 41/1RB#0 20M	Left Cheek	40640	23.06	24.00	1.242	0.148	0.185
	LTE Band 41/1RB#0 20M	Left Tilt	40640	23.06	24.00	1.242	0.189	0.236
	LTE Band 41/50RB#0 20M	Right Cheek	40640	22.20	22.50	1.072	0.307	0.331
	LTE Band 41/50RB#0 20M	Right Tilt	40640	22.20	22.50	1.072	0.267	0.288



	LTE Band 41/50RB#0 20M	Left Cheek	40640	22.20	22.50	1.072	0.162	0.175
	LTE Band 41/50RB#0 20M	Left Tilt	40640	22.20	22.50	1.072	0.201	0.217
Bottom Ant. (Full power)								
	LTE Band 41/1RB#0 20M	Right Cheek	40640	23.16	24.00	1.213	0.030	0.037
	LTE Band 41/1RB#0 20M	Right Tilt	40640	23.16	24.00	1.213	0.034	0.042
	LTE Band 41/1RB#0 20M	Left Cheek	40640	23.16	24.00	1.213	0.051	0.062
	LTE Band 41/1RB#0 20M	Left Tilt	40640	23.16	24.00	1.213	0.040	0.048
	LTE Band 41/50RB#0 20M	Right Cheek	40640	22.38	22.50	1.028	0.244	0.252
	LTE Band 41/50RB#0 20M	Right Tilt	40640	22.38	22.50	1.028	0.031	0.032
	LTE Band 41/50RB#0 20M	Left Cheek	40640	22.38	22.50	1.028	0.043	0.044
	LTE Band 41/50RB#0 20M	Left Tilt	40640	22.38	22.50	1.028	0.035	0.036
Top Ant. (Reduction power)								
	LTE Band 66/1RB#0 20M	Right Cheek	132322	17.60	18.50	1.230	0.325	0.400
	LTE Band 66/1RB#0 20M	Right Tilt	132322	17.60	18.50	1.230	0.237	0.291
	LTE Band 66/1RB#0 20M	Left Cheek	132322	17.60	18.50	1.230	0.163	0.201
	LTE Band 66/1RB#0 20M	Left Tilt	132322	17.60	18.50	1.230	0.214	0.263
14#	LTE Band 66/50RB#0 20M	Right Cheek	132322	17.36	18.00	1.159	0.361	0.418
	LTE Band 66/50RB#0 20M	Right Tilt	132322	17.36	18.00	1.159	0.282	0.326
	LTE Band 66/50RB#0 20M	Left Cheek	132322	17.36	18.00	1.159	0.186	0.215
	LTE Band 66/50RB#0 20M	Left Tilt	132322	17.36	18.00	1.159	0.222	0.257
Bottom Ant. (Reduction power)								
	LTE Band 66/1RB#0 20M	Right Cheek	132322	19.98	22.00	1.592	0.003	0.005
	LTE Band 66/1RB#0 20M	Right Tilt	132322	19.98	22.00	1.592	0.007	0.011
	LTE Band 66/1RB#0 20M	Left Cheek	132322	19.98	22.00	1.592	0.006	0.010
	LTE Band 66/1RB#0 20M	Left Tilt	132322	19.98	22.00	1.592	0.003	0.004
	LTE Band 66/50RB#0 20M	Right Cheek	132322	19.51	20.00	1.119	0.078	0.087
	LTE Band 66/50RB#0 20M	Right Tilt	132322	19.51	20.00	1.119	0.001	0.001
	LTE Band 66/50RB#0 20M	Left Cheek	132322	19.51	20.00	1.119	0.013	0.015
	LTE Band 66/50RB#0 20M	Left Tilt	132322	19.51	20.00	1.119	0.003	0.004

➤ **WLAN Head SAR**

Plot No.	Band/Mode	Test Position	CH.	Ave. Power (dBm)	Tune-up Limit (dBm)	Tune-up Scaling Factor	Meas. SAR _{1g} (W/kg)	Reported SAR _{1g} (W/kg)
	WLAN2.4GHz/802.11b	Right Cheek	6	17.59	18.00	1.099	0.426	0.468
	WLAN2.4GHz/802.11b	Right Tilt	6	17.59	18.00	1.099	0.397	0.436
15#	WLAN2.4GHz/802.11b	Left Cheek	6	17.59	18.00	1.099	1.050	1.154
	WLAN2.4GHz/802.11b	Left Tilt	6	17.59	18.00	1.099	0.901	0.990
	WLAN2.4GHz/802.11b	Left Cheek	1	17.44	18.00	1.138	0.924	1.051
	WLAN2.4GHz/802.11b	Left Cheek	11	17.19	18.00	1.205	0.906	1.092
	WLAN2.4GHz/802.11b	Left Tilt	1	17.44	18.00	1.138	0.876	0.997
	WLAN2.4GHz/802.11b	Left Tilt	11	17.19	18.00	1.205	0.788	0.950

Note:

1. Per KDB 447498 D01v06, for each exposure position, if the highest output power channel Reported SAR \leq 0.8W/kg, other channels SAR testing is not necessary.
2. Per KDB 865664 D01v01r04, for each frequency band, repeated SAR measurement is required when the measured SAR is \geq 0.8W/kg.
3. Per KDB 941225 D05v02r05, 100% RB allocation SAR measurement is not required when the highest reported SAR for 1 RB and 50% RB allocation are \leq 0.8 W/kg.
4. PerKDB248227 D01v02r02, for 802.11b DSSS , when the reported SAR of the highest measured maximum output power channel for the exposure configuration is \leq 0.8 W/kg, no further SAR testing is required in that exposure configuration.
5. Per KDB248227 D01v02r02, OFDM SAR is not required when the highest reported SAR for DSSS is adjusted by the ratio of OFDM to DSSS specified maximum output power and the adjusted SAR is \leq 1.2 W/kg.
6. According to KDB 865664 D02v01r02, SAR plot is required for the highest measured SAR in each exposure configuration, wireless mode and frequency band combination.
7. The WLAN Reported 1g SAR (W/kg) has been calculated together with the duty cycle scaling factor 1.0 for 2.4G WLAN.



16.3. Body SAR Data

➤ **GSM Body SAR**

Plot No.	Band/Mode	Test Position	CH.	Ave. Power (dBm)	Tune-up Limit (dBm)	Tune-up Scaling Factor	Meas. SAR _{1g} (W/kg)	Reported SAR _{1g} (W/kg)
Top Ant. (Full power)								
	GPRS 850(4 TX slots)	Front Side	251	26.71	28.00	1.346	0.149	0.201
16#	GPRS 850(4 TX slots)	Back Side	251	26.71	28.00	1.346	0.292	0.393
	GPRS 850(4 TX slots)	Left Side	251	26.71	28.00	1.346	0.181	0.244
	GPRS 850(4 TX slots)	Top Side	251	26.71	28.00	1.346	0.125	0.168
Bottom Ant. (Full power)								
	GPRS 850(4 TX slots)	Front Side	251	27.10	28.00	1.230	0.161	0.198
	GPRS 850(4 TX slots)	Back Side	251	27.10	28.00	1.230	0.265	0.326
	GPRS 850(4 TX slots)	Left Side	251	27.10	28.00	1.230	0.128	0.157
	GPRS 850(4 TX slots)	Right Side	251	27.10	28.00	1.230	0.190	0.234
	GPRS 850(4 TX slots)	Bottom Side	251	27.10	28.00	1.230	0.115	0.141
Top Ant. (Reduction power)								
	GPRS1900(3 TX slots)	Front Side	810	24.65	25.50	1.216	0.251	0.306
17#	GPRS1900(3 TX slots)	Back Side	810	24.65	25.50	1.216	0.450	0.547
	GPRS1900(3 TX slots)	Left Side	810	24.65	25.50	1.216	0.133	0.161
	GPRS1900(3 TX slots)	Top Side	810	24.65	25.50	1.216	0.358	0.435
Bottom Ant. (Reduction power)								
	GPRS1900(3 TX slots)	Front Side	810	23.80	24.50	1.175	0.409	0.481
	GPRS1900(3 TX slots)	Back Side	810	23.80	24.50	1.175	0.412	0.484
	GPRS1900(3 TX slots)	Left Side	810	23.80	24.50	1.175	0.059	0.069
	GPRS1900(3 TX slots)	Right Side	810	23.80	24.50	1.175	0.038	0.044
18#	GPRS1900(3 TX slots)	Bottom Side	810	23.80	24.50	1.175	0.674	0.792



➤ **WCDMA Body SAR**

Plot No.	Band/Mode	Test Position	CH.	Ave. Power (dBm)	Tune-up Limit (dBm)	Tune-up Scaling Factor	Meas. SAR _{1g} (W/kg)	Reported SAR _{1g} (W/kg)
Top Ant. (Reduction power)								
	Band II/RMC	Front Side	9262	20.14	21.00	1.219	0.219	0.267
19#	Band II/RMC	Back Side	9262	20.14	21.00	1.219	0.452	0.551
	Band II/RMC	Left Side	9262	20.14	21.00	1.219	0.162	0.197
	Band II/RMC	Top Side	9262	20.14	21.00	1.219	0.370	0.451
Bottom Ant. (Reduction power)								
	Band II/RMC	Front Side	9262	18.65	19.50	1.216	0.120	0.146
	Band II/RMC	Back Side	9262	18.65	19.50	1.216	0.303	0.369
	Band II/RMC	Left Side	9262	18.65	19.50	1.216	0.026	0.032
	Band II/RMC	Right Side	9262	18.65	19.50	1.216	0.008	0.010
20#	Band II/RMC	Bottom Side	9262	18.65	19.50	1.216	0.518	0.630
Top Ant. (Reduction power)								
	Band IV/RMC	Front Side	1312	21.44	22.50	1.276	0.181	0.231
21#	Band IV/RMC	Back Side	1312	21.44	22.50	1.276	0.426	0.544
	Band IV/RMC	Left Side	1312	21.44	22.50	1.276	0.164	0.209
22#	Band IV/RMC	Top Side	1312	21.44	22.50	1.276	0.465	0.594
Bottom Ant. (Reduction power)								
	Band IV/RMC	Front Side	1312	21.57	22.00	1.104	0.043	0.047
	Band IV/RMC	Back Side	1312	21.57	22.00	1.104	0.079	0.087
	Band IV/RMC	Left Side	1312	21.57	22.00	1.104	0.010	0.011
	Band IV/RMC	Right Side	1312	21.57	22.00	1.104	0.007	0.008
	Band IV/RMC	Bottom Side	1312	21.57	22.00	1.104	0.147	0.162
Top Ant. (Full power)								
	Band V/RMC	Front Side	4182	24.74	25.50	1.191	0.121	0.144
23#	Band V/RMC	Back Side	4182	24.74	25.50	1.191	0.271	0.323
	Band V/RMC	Left Side	4182	24.74	25.50	1.191	0.142	0.169
	Band V/RMC	Top Side	4182	24.74	25.50	1.191	0.105	0.125
Bottom Ant. (Full power)								
	Band V/RMC	Front Side	4132	24.77	25.50	1.183	0.107	0.127
	Band V/RMC	Back Side	4132	24.77	25.50	1.183	0.236	0.279
	Band V/RMC	Left Side	4132	24.77	25.50	1.183	0.103	0.122
	Band V/RMC	Right Side	4132	24.77	25.50	1.183	0.142	0.168
	Band V/RMC	Bottom Side	4132	24.77	25.50	1.183	0.092	0.109



➤ LTE QPSK Body SAR

Plot No.	Band/Mode	Test Position	CH.	Ave. Power (dBm)	Tune-up Limit (dBm)	Tune-up Scaling Factor	Meas. SAR _{1g} (W/kg)	Reported SAR _{1g} (W/kg)
Top Ant. (Reduction power)								
	LTE Band 2/1RB#0 20M	Front Side	18900	21.14	22.00	1.220	0.166	0.202
24#	LTE Band 2/1RB#0 20M	Back Side	18900	21.14	22.00	1.220	0.454	0.554
	LTE Band 2/1RB#0 20M	Left Side	18900	21.14	22.00	1.220	0.149	0.182
	LTE Band 2/1RB#0 20M	Top Side	18900	21.14	22.00	1.220	0.327	0.399
Bottom Ant. (Reduction power)								
	LTE Band 2/50RB#0 20M	Front Side	18900	20.46	21.00	1.133	0.170	0.192
	LTE Band 2/50RB#0 20M	Back Side	18900	20.46	21.00	1.133	0.394	0.447
	LTE Band 2/50RB#0 20M	Left Side	18900	20.46	21.00	1.133	0.148	0.168
	LTE Band 2/50RB#0 20M	Top Side	18900	20.46	21.00	1.133	0.349	0.395
Bottom Ant. (Reduction power)								
	LTE Band 2/1RB#0 20M	Front Side	18900	18.75	20.00	1.334	0.173	0.230
	LTE Band 2/1RB#0 20M	Back Side	18900	18.75	20.00	1.334	0.391	0.521
	LTE Band 2/1RB#0 20M	Left Side	18900	18.75	20.00	1.334	0.044	0.059
	LTE Band 2/1RB#0 20M	Right Side	18900	18.75	20.00	1.334	0.011	0.015
25#	LTE Band 2/1RB#0 20M	Bottom Side	18900	18.75	20.00	1.334	0.554	0.739
Bottom Ant. (Reduction power)								
	LTE Band 2/50RB#0 20M	Front Side	18900	18.33	19.00	1.167	0.180	0.210
	LTE Band 2/50RB#0 20M	Back Side	18900	18.33	19.00	1.167	0.390	0.455
	LTE Band 2/50RB#0 20M	Left Side	18900	18.33	19.00	1.167	0.039	0.045
	LTE Band 2/50RB#0 20M	Right Side	18900	18.33	19.00	1.167	0.010	0.012
	LTE Band 2/50RB#0 20M	Bottom Side	18900	18.33	19.00	1.167	0.600	0.700
Top Ant. (Full power)								
	LTE Band 5/1RB#0 10M	Front Side	20525	24.33	25.00	1.167	0.142	0.166
26#	LTE Band 5/1RB#0 10M	Back Side	20525	24.33	25.00	1.167	0.237	0.277
	LTE Band 5/1RB#0 10M	Left Side	20525	24.33	25.00	1.167	0.204	0.238
	LTE Band 5/1RB#0 10M	Top Side	20525	24.33	25.00	1.167	0.123	0.143
Bottom Ant. (Full power)								
	LTE Band 5/25RB#0 10M	Front Side	20525	23.28	24.00	1.180	0.110	0.130
	LTE Band 5/25RB#0 10M	Back Side	20525	23.28	24.00	1.180	0.183	0.216
	LTE Band 5/25RB#0 10M	Left Side	20525	23.28	24.00	1.180	0.168	0.198
	LTE Band 5/25RB#0 10M	Top Side	20525	23.28	24.00	1.180	0.099	0.117
Bottom Ant. (Full power)								
	LTE Band 5/1RB#0 10M	Front Side	20525	24.44	25.00	1.138	0.117	0.133



	LTE Band 5/1RB#0 10M	Back Side	20525	24.44	25.00	1.138	0.212	0.241
	LTE Band 5/1RB#0 10M	Left Side	20525	24.44	25.00	1.138	0.136	0.155
	LTE Band 5/1RB#0 10M	Right Side	20525	24.44	25.00	1.138	0.186	0.212
	LTE Band 5/1RB#0 10M	Bottom Side	20525	24.44	25.00	1.138	0.091	0.104
	LTE Band 5/25RB#0 10M	Front Side	20525	23.49	24.00	1.125	0.090	0.101
	LTE Band 5/25RB#010M	Back Side	20525	23.49	24.00	1.125	0.185	0.208
	LTE Band 5/25RB#0 10M	Left Side	20525	23.49	24.00	1.125	0.112	0.126
	LTE Band 5/25RB#0 10M	Right Side	20525	23.49	24.00	1.125	0.154	0.173
	LTE Band 5/25RB#0 10M	Bottom Side	20525	23.49	24.00	1.125	0.079	0.089
Top Ant. (Reduction power)								
	LTE Band 7/1RB#0 20M	Front Side	21100	21.79	23.00	1.321	0.279	0.369
27#	LTE Band 7/1RB#0 20M	Back Side	21100	21.79	23.00	1.321	0.540	0.713
	LTE Band 7/1RB#0 20M	Left Side	21100	21.79	23.00	1.321	0.282	0.372
	LTE Band 7/1RB#0 20M	Top Side	21100	21.79	23.00	1.321	0.526	0.695
	LTE Band 7/50RB#0 20M	Front Side	21100	21.09	22.00	1.233	0.293	0.361
	LTE Band 7/50RB#0 20M	Back Side	21100	21.09	22.00	1.233	0.536	0.661
	LTE Band 7/50RB#0 20M	Left Side	21100	21.09	22.00	1.233	0.277	0.341
	LTE Band 7/50RB#0 20M	Top Side	21100	21.09	22.00	1.233	0.541	0.667
Bottom Ant. (Reduction power)								
	LTE Band 7/1RB#0 20M	Front Side	21100	21.57	23.00	1.390	0.191	0.266
	LTE Band 7/1RB#0 20M	Back Side	21100	21.57	23.00	1.390	0.260	0.361
	LTE Band 7/1RB#0 20M	Left Side	21100	21.57	23.00	1.390	0.097	0.134
	LTE Band 7/1RB#0 20M	Right Side	21100	21.57	23.00	1.390	0.063	0.088
	LTE Band 7/1RB#0 20M	Bottom Side	21100	21.57	23.00	1.390	0.271	0.377
	LTE Band 7/50RB#0 20M	Front Side	21100	20.79	22.00	1.321	0.144	0.190
	LTE Band 7/50RB#0 20M	Back Side	21100	20.79	22.00	1.321	0.269	0.356
	LTE Band 7/50RB#0 20M	Left Side	21100	20.79	22.00	1.321	0.102	0.135
	LTE Band 7/50RB#0 20M	Right Side	21100	20.79	22.00	1.321	0.074	0.097
	LTE Band 7/50RB#0 20M	Bottom Side	21100	20.79	22.00	1.321	0.316	0.418
Top Ant. (Full power)								
	LTE Band 26/1RB#0 15M	Front Side	26865	24.20	25.00	1.202	0.125	0.150
28#	LTE Band 26/1RB#0 15M	Back Side	26865	24.20	25.00	1.202	0.212	0.255
	LTE Band 26/1RB#0 15M	Left Side	26865	24.20	25.00	1.202	0.172	0.206
	LTE Band 26/1RB#0 15M	Top Side	26865	24.20	25.00	1.202	0.106	0.127



	LTE Band 26/36RB#0 15M	Front Side	26865	23.41	24.00	1.146	0.103	0.118
	LTE Band 26/36RB#0 15M	Back Side	26865	23.41	24.00	1.146	0.174	0.200
	LTE Band 26/36RB#0 15M	Left Side	26865	23.41	24.00	1.146	0.142	0.163
	LTE Band 26/36RB#0 15M	Top Side	26865	23.41	24.00	1.146	0.090	0.103
Bottom Ant. (Full power)								
	LTE Band 26/1RB#0 15M	Front Side	26865	24.25	25.00	1.189	0.085	0.101
	LTE Band 26/1RB#0 15M	Back Side	26865	24.25	25.00	1.189	0.172	0.204
	LTE Band 26/1RB#0 15M	Left Side	26865	24.25	25.00	1.189	0.108	0.128
	LTE Band 26/1RB#0 15M	Right Side	26865	24.25	25.00	1.189	0.135	0.160
	LTE Band 26/1RB#0 15M	Bottom Side	26865	24.25	25.00	1.189	0.067	0.080
Bottom Ant. (Full power)								
	LTE Band 26/36RB#0 15M	Front Side	26865	23.47	24.00	1.130	0.070	0.079
	LTE Band 26/36RB#0 15M	Back Side	26865	23.47	24.00	1.130	0.150	0.169
	LTE Band 26/36RB#0 15M	Left Side	26865	23.47	24.00	1.130	0.092	0.104
	LTE Band 26/36RB#0 15M	Right Side	26865	23.47	24.00	1.130	0.123	0.139
	LTE Band 26/36RB#0 15M	Bottom Side	26865	23.47	24.00	1.130	0.059	0.067
Top Ant. (Full power)								
	LTE Band 38/1RB#0 20M	Front Side	38000	22.94	24.00	1.276	0.110	0.142
29#	LTE Band 38/1RB#0 20M	Back Side	38000	22.94	24.00	1.276	0.250	0.321
	LTE Band 38/1RB#0 20M	Left Side	38000	22.94	24.00	1.276	0.129	0.166
	LTE Band 38/1RB#0 20M	Top Side	38000	22.94	24.00	1.276	0.180	0.231
Bottom Ant. (Full power)								
	LTE Band 38/50RB#0 20M	Front Side	38000	22.43	23.00	1.140	0.098	0.113
	LTE Band 38/50RB#0 20M	Back Side	38000	22.43	23.00	1.140	0.206	0.236
	LTE Band 38/50RB#0 20M	Left Side	38000	22.43	23.00	1.140	0.065	0.075
	LTE Band 38/50RB#0 20M	Top Side	38000	22.43	23.00	1.140	0.188	0.215
Bottom Ant. (Full power)								
	LTE Band 38/1RB#0 20M	Front Side	38000	23.02	24.00	1.253	0.146	0.184
	LTE Band 38/1RB#0 20M	Back Side	38000	23.02	24.00	1.253	0.165	0.208
	LTE Band 38/1RB#0 20M	Left Side	38000	23.02	24.00	1.253	0.068	0.086
	LTE Band 38/1RB#0 20M	Right Side	38000	23.02	24.00	1.253	0.047	0.059
	LTE Band 38/1RB#0 20M	Bottom Side	38000	23.02	24.00	1.253	0.167	0.211
Bottom Ant. (Full power)								
	LTE Band 38/50RB#0 20M	Front Side	38000	22.49	23.00	1.125	0.110	0.125
	LTE Band 38/50RB#0 20M	Back Side	38000	22.49	23.00	1.125	0.140	0.158
	LTE Band 38/50RB#0 20M	Left Side	38000	22.49	23.00	1.125	0.057	0.065
	LTE Band 38/50RB#0 20M	Right Side	38000	22.49	23.00	1.125	0.038	0.043
	LTE Band 38/50RB#0 20M	Bottom Side	38000	22.49	23.00	1.125	0.140	0.158



Top Ant. (Full power)								
	LTE Band 40A/1RB#0 10M	Front Side	38750	23.00	24.00	1.259	0.148	0.188
30#	LTE Band 40A/1RB#0 10M	Back Side	38750	23.00	24.00	1.259	0.305	0.386
	LTE Band 40A/1RB#0 10M	Left Side	38750	23.00	24.00	1.259	0.069	0.087
	LTE Band 40A/1RB#0 10M	Top Side	38750	23.00	24.00	1.259	0.279	0.353
Bottom Ant. (Full power)								
	LTE Band 40A/25RB#0 10M	Front Side	38750	22.43	23.00	1.140	0.126	0.144
	LTE Band 40A/25RB#0 10M	Back Side	38750	22.43	23.00	1.140	0.178	0.204
	LTE Band 40A/25RB#0 10M	Left Side	38750	22.43	23.00	1.140	0.060	0.069
	LTE Band 40A/25RB#0 10M	Top Side	38750	22.43	23.00	1.140	0.221	0.254
Bottom Ant. (Full power)								
	LTE Band 40A/1RB#0 10M	Front Side	38750	23.05	24.00	1.245	0.159	0.199
	LTE Band 40A/1RB#0 10M	Back Side	38750	23.05	24.00	1.245	0.141	0.177
	LTE Band 40A/1RB#0 10M	Left Side	38750	23.05	24.00	1.245	0.087	0.109
	LTE Band 40A/1RB#0 10M	Right Side	38750	23.05	24.00	1.245	0.034	0.043
	LTE Band 40A/1RB#0 10M	Bottom Side	38750	23.05	24.00	1.245	0.178	0.223
Bottom Ant. (Full power)								
	LTE Band 40A/25RB#0 10M	Front Side	38750	22.52	23.00	1.117	0.069	0.077
	LTE Band 40A/25RB#0 10M	Back Side	38750	22.52	23.00	1.117	0.119	0.134
	LTE Band 40A/25RB#0 10M	Left Side	38750	22.52	23.00	1.117	0.036	0.040
	LTE Band 40A/25RB#0 10M	Right Side	38750	22.52	23.00	1.117	0.013	0.014
	LTE Band 40A/25RB#0 10M	Bottom Side	38750	22.52	23.00	1.117	0.078	0.088
Top Ant. (Full power)								
	LTE Band 40B/1RB#0 10M	Front Side	39200	23.01	24.00	1.256	0.180	0.227
31#	LTE Band 40B/1RB#0 10M	Back Side	39200	23.01	24.00	1.256	0.401	0.507
	LTE Band 40B/1RB#0 10M	Left Side	39200	23.01	24.00	1.256	0.143	0.181
	LTE Band 40B/1RB#0 10M	Top Side	39200	23.01	24.00	1.256	0.373	0.471
Bottom Ant. (Full power)								
	LTE Band 40B/25RB#0 10M	Front Side	39200	22.44	23.00	1.138	0.147	0.168
	LTE Band 40B/25RB#0 10M	Back Side	39200	22.44	23.00	1.138	0.334	0.382
	LTE Band 40B/25RB#0 10M	Left Side	39200	22.44	23.00	1.138	0.111	0.127
	LTE Band 40B/25RB#0 10M	Top Side	39200	22.44	23.00	1.138	0.351	0.402
Bottom Ant. (Full power)								
	LTE Band 40B/1RB#0 10M	Front Side	39200	23.02	24.00		0.092	0.105
	LTE Band 40B/1RB#0 10M	Back Side	39200	23.02	24.00	1.253	0.147	0.185
	LTE Band 40B/1RB#0 10M	Left Side	39200	23.02	24.00	1.253	0.042	0.053
	LTE Band 40B/1RB#0 10M	Right Side	39200	23.02	24.00	1.253	0.021	0.026
	LTE Band 40B/1RB#0 10M	Bottom Side	39200	23.02	24.00	1.253	0.105	0.132



	LTE Band 40B/25RB#0 10M	Front Side	39200	22.42	23.00		0.072	0.082
	LTE Band 40B/25RB#0 10M	Back Side	39200	22.42	23.00	1.143	0.109	0.125
	LTE Band 40B/25RB#0 10M	Left Side	39200	22.42	23.00	1.143	0.037	0.043
	LTE Band 40B/25RB#0 10M	Right Side	39200	22.42	23.00	1.143	0.021	0.024
	LTE Band 40B/25RB#0 10M	Bottom Side	39200	22.42	23.00	1.143	0.083	0.095
Top Ant. (Full power)								
	LTE Band 41/1RB#0 20M	Front Side	40640	23.06	24.00	1.242	0.121	0.151
32#	LTE Band 41/1RB#0 20M	Back Side	40640	23.06	24.00	1.242	0.251	0.314
	LTE Band 41/1RB#0 20M	Left Side	40640	23.06	24.00	1.242	0.106	0.133
	LTE Band 41/1RB#0 20M	Top Side	40640	23.06	24.00	1.242	0.182	0.227
Bottom Ant. (Full power)								
	LTE Band 41/50RB#0 20M	Front Side	40640	22.20	22.50	1.072	0.101	0.109
	LTE Band 41/50RB#0 20M	Back Side	40640	22.20	22.50	1.072	0.207	0.223
	LTE Band 41/50RB#0 20M	Left Side	40640	22.20	22.50	1.072	0.073	0.079
	LTE Band 41/50RB#0 20M	Top Side	40640	22.20	22.50	1.072	0.153	0.165
Bottom Ant. (Full power)								
	LTE Band 41/1RB#0 20M	Front Side	40640	23.16	24.00	1.213	0.142	0.174
	LTE Band 41/1RB#0 20M	Back Side	40640	23.16	24.00	1.213	0.165	0.201
	LTE Band 41/1RB#0 20M	Left Side	40640	23.16	24.00	1.213	0.068	0.083
	LTE Band 41/1RB#0 20M	Right Side	40640	23.16	24.00	1.213	0.043	0.052
	LTE Band 41/1RB#0 20M	Bottom Side	40640	23.16	24.00	1.213	0.168	0.205
Bottom Ant. (Reduction power)								
	LTE Band 41/50RB#0 20M	Front Side	40640	22.38	22.50	1.028	0.109	0.113
	LTE Band 41/50RB#0 20M	Back Side	40640	22.38	22.50	1.028	0.138	0.142
	LTE Band 41/50RB#0 20M	Left Side	40640	22.38	22.50	1.028	0.055	0.057
	LTE Band 41/50RB#0 20M	Right Side	40640	22.38	22.50	1.028	0.038	0.040
	LTE Band 41/50RB#0 20M	Bottom Side	40640	22.38	22.50	1.028	0.136	0.140
Top Ant. (Reduction power)								
	LTE Band 66/1RB#0 20M	Front Side	132322	21.84	23.00	1.306	0.289	0.377
33#	LTE Band 66/1RB#0 20M	Back Side	132322	21.84	23.00	1.306	0.482	0.630
	LTE Band 66/1RB#0 20M	Left Side	132322	21.84	23.00	1.306	0.269	0.351
	LTE Band 66/1RB#0 20M	Top Side	132322	21.84	23.00	1.306	0.407	0.532
Bottom Ant. (Reduction power)								
	LTE Band 66/50RB#0 20M	Front Side	132322	21.44	22.00	1.138	0.326	0.371
	LTE Band 66/50RB#0 20M	Back Side	132322	21.44	22.00	1.138	0.531	0.604
	LTE Band 66/50RB#0 20M	Left Side	132322	21.44	22.00	1.138	0.284	0.323
	LTE Band 66/50RB#0 20M	Top Side	132322	21.44	22.00	1.138	0.428	0.487



Bottom Ant. (Reduction power)								
	LTE Band 66/1RB#0 20M	Front Side	132322	20.12	21.00	1.225	0.065	0.079
	LTE Band 66/1RB#0 20M	Back Side	132322	20.12	21.00	1.225	0.087	0.106
	LTE Band 66/1RB#0 20M	Left Side	132322	20.12	21.00	1.225	0.016	0.019
	LTE Band 66/1RB#0 20M	Right Side	132322	20.12	21.00	1.225	0.015	0.018
	LTE Band 66/1RB#0 20M	Bottom Side	132322	20.12	21.00	1.225	0.130	0.159
	LTE Band 66/50RB#0 20M	Front Side	132322	19.49	20.00	1.125	0.054	0.061
	LTE Band 66/50RB#0 20M	Back Side	132322	19.49	20.00	1.125	0.103	0.116
	LTE Band 66/50RB#0 20M	Left Side	132322	19.49	20.00	1.125	0.018	0.020
	LTE Band 66/50RB#0 20M	Right Side	132322	19.49	20.00	1.125	0.014	0.016
	LTE Band 66/50RB#0 20M	Bottom Side	132322	19.49	20.00	1.125	0.153	0.172

➤ **WLAN Body SAR**

Plot No.	Band/Mode	Test Position	CH.	Ave. Power (dBm)	Tune-up Limit (dBm)	Tune-up Scaling Factor	Meas. SAR _{1g} (W/kg)	Reported SAR _{1g} (W/kg)
	WLAN2.4GHz/802.11b	Front Side	6	17.59	18.00	1.099	0.313	0.344
34#	WLAN2.4GHz/802.11b	Back Side	6	17.59	18.00	1.099	0.372	0.409
	WLAN2.4GHz/802.11b	Right Side	6	17.59	18.00	1.099	0.291	0.320
	WLAN2.4GHz/802.11b	Top Side	6	17.59	18.00	1.099	0.218	0.240

Note:

The WLAN Reported 1g SAR (W/kg) has been calculated together with the duty cycle scaling factor 1.0 for 2.4G WLAN.

➤ **Bluetooth Body SAR**

Plot No.	Band/Mode	Test Position	CH.	Ave. Power (dBm)	Tune-up Limit (dBm)	Tune-up Scaling Factor	Meas. SAR _{1g} (W/kg)	Reported SAR _{1g} (W/kg)
	Bluetooth/1Mbps	Front Side	78	10.10	10.50	1.096	0.010	0.012
35#	Bluetooth/1Mbps	Back Side	78	10.10	10.50	1.096	0.013	0.016

Note:

The Bluetooth Reported 1g SAR (W/kg) has been calculated together with the duty cycle scaling factor 1.085.



16.4. Repeated SAR Assessment

In accordance with published RF Exposure KDB procedure 865664 D01 SAR measurement 100 MHz to 6 GHz. These additional measurements are repeated after the completion of all measurements requiring the same head or body tissue-equivalent medium in a frequency band. The test device should be returned to ambient conditions (normal room temperature) with the battery fully charged before it is re-mounted on the device holder for the repeated measurement(s) to minimize any unexpected variations in the repeated results.

- 1) Repeated measurement is not required when the original highest measured SAR is < 0.80 W/kg; steps 2) through 4) do not apply.
- 2) When the original highest measured SAR is ≥ 0.80 W/kg, repeat that measurement once.
- 3) Perform a second repeated measurement only if the ratio of largest to smallest SAR for the original and first repeated measurements is > 1.20 or when the original or repeated measurement is ≥ 1.45 W/kg (~ 10% from the 1-g SAR limit).
- 4) Perform a third repeated measurement only if the original, first or second repeated measurement is ≥ 1.5 W/kg and the ratio of largest to smallest SAR for the original, first and second repeated measurements is > 1.20 .



16.5. Extremity SAR Assessment

Guidance:

1. According to KDB 648747 D04v01r03 The UMPC mini-tablet procedures must also be applied to test the SAR of all surfaces and edges with an antenna located at ≤ 25 mm from that surface or edge, in direct contact with a flat phantom, for 10-g extremity SAR according to the body-equivalent tissue dielectric parameters in KDB Publication 865664 D01 to address interactive hand use exposure conditions.
2. When hotspot mode applies, 10-g extremity SAR is required only for the surfaces and edges with hotspot mode 1-g reported SAR > 1.2 W/kg.



17. Simultaneous Transmission Evaluation

17.1. Simultaneous Transmission Consideration

No.	Simultaneous Transmission Consideration	Head	Body-Worn	Hotspot
1	WWAN(2G/3G/4G)+WLAN 2.4GHz	Yes	Yes	Yes
2	WWAN(2G/3G/4G)+Bluetooth	NO	Yes	NO

Note:

1. When the user enables the personal wireless router functions for the handset, actual operations include simultaneous transmission of both the Wi-Fi transmitter and another WWAN transmitter. Both transmitter often do not transmit at the same transmitting frequency and thus cannot be evaluated for SAR under actual use conditions. The "Portable Hotspot" feature on the handset was NOT activated, to ensure the SAR measurements were evaluated for a single transmission frequency RF signal.
2. The hotspot SAR result may overlap with the body-worn accessory SAR requirements, per KDB 941225 D06, the more conservative configurations can be considered, thus excluding some unnecessary body-worn accessory SAR tests.
3. Simultaneous Transmission SAR evaluation is not required for BT and Wi-Fi, because the software mechanism have been incorporated to guarantee that the WLAN and Bluetooth transmitters would not simultaneously operate.
4. Per KDB 447498D01v06, simultaneous transmission SAR evaluation procedures is as followed:
Step 1: If sum of 1 g SAR < 1.6 W/kg, Simultaneous SAR measurement is not required.
Step 2: If sum of 1 g SAR > 1.6 W/kg, ratio of SAR to peak separation distance for pair of transmitters calculated.
Step 3: If the ratio of SAR to peak separation distance is ≤ 0.04 , Simultaneous SAR measurement is not required.
Step 4: If the ratio of SAR to peak separation distance is > 0.04 , Simultaneous SAR measurement is required and simultaneous transmission SAR value is calculated.
(The ratio is determined by: $(SAR1 + SAR2) \wedge 1.5/Ri \leq 0.04$,
Ri is the separation distance between the peak SAR locations for the antenna pair in mm.



17.2. Simultaneous Transmission Analysis

➤ Head Simultaneous Transmission for WWAN(2G/3G/4G)+WLAN(2.4GHz)

WWAN Band	Exposure Position	1	2	1+2
		WWAN	2.4GHz WLAN	Summed
		1g SAR(W/kg)	1g SAR(W/kg)	1g SAR (W/kg)
GSM850	Right Cheek	0.459	0.468	0.927
	Right Tilt	0.374	0.436	0.810
	Left Cheek	0.394	1.154	1.548
	Left Tilt	0.320	0.997	1.317
GSM1900	Right Cheek	0.522	0.468	0.990
	Right Tilt	0.417	0.436	0.853
	Left Cheek	0.291	1.154	1.445
	Left Tilt	0.340	0.997	1.337
WCDMA Band II	Right Cheek	0.589	0.468	1.057
	Right Tilt	0.531	0.436	0.967
	Left Cheek	0.354	1.154	1.508
	Left Tilt	0.467	0.997	1.464
WCDMA Band IV	Right Cheek	0.405	0.468	0.873
	Right Tilt	0.544	0.436	0.980
	Left Cheek	0.227	1.154	1.381
	Left Tilt	0.268	0.997	1.265
WCDMA Band V	Right Cheek	0.572	0.468	1.040
	Right Tilt	0.447	0.436	0.883
	Left Cheek	0.421	1.154	1.575
	Left Tilt	0.334	0.997	1.331
LTE Band 2	Right Cheek	0.601	0.468	1.069
	Right Tilt	0.519	0.436	0.955
	Left Cheek	0.330	1.154	1.484
	Left Tilt	0.482	0.997	1.479
LTE Band 5	Right Cheek	0.450	0.468	0.918
	Right Tilt	0.357	0.436	0.793
	Left Cheek	0.375	1.154	1.529
	Left Tilt	0.264	0.997	1.261
LTE Band 7	Right Cheek	0.419	0.468	0.887
	Right Tilt	0.548	0.436	0.984
	Left Cheek	0.360	1.154	1.514



	Left Tilt	0.405	0.997	1.402
LTE Band 26	Right Cheek	0.439	0.468	0.907
	Right Tilt	0.352	0.436	0.788
	Left Cheek	0.359	1.154	1.513
	Left Tilt	0.272	0.997	1.269
LTE Band 38	Right Cheek	0.262	0.468	0.730
	Right Tilt	0.342	0.436	0.778
	Left Cheek	0.208	1.154	1.362
	Left Tilt	0.262	0.997	1.259
LTE Band 40A	Right Cheek	0.423	0.468	0.891
	Right Tilt	0.622	0.436	1.058
	Left Cheek	0.324	1.154	1.478
	Left Tilt	0.349	0.997	1.346
LTE Band 40B	Right Cheek	0.448	0.468	0.916
	Right Tilt	0.607	0.436	1.043
	Left Cheek	0.348	1.154	1.502
	Left Tilt	0.358	0.997	1.355
LTE Band 41	Right Cheek	0.407	0.468	0.875
	Right Tilt	0.299	0.436	0.735
	Left Cheek	0.185	1.154	1.339
	Left Tilt	0.236	0.997	1.233
LTE Band 66/4	Right Cheek	0.418	0.468	0.886
	Right Tilt	0.326	0.436	0.762
	Left Cheek	0.215	1.154	1.369
	Left Tilt	0.263	0.997	1.260



➤ **Body Simultaneous Transmission for WWAN(2G/3G/4G)+WLAN(2.4GHz)/Bluetooth**

WWAN Band	Exposure Position	1	2	3	1+2 Summed 1g SAR (W/kg)	1+3 Summed 1g SAR (W/kg)
		WWAN	2.4GHz WLAN	Bluetooth		
		1g SAR (W/kg)	1g SAR (W/kg)	1g SAR (W/kg)		
GSM850	Front	0.201	0.344	0.012	0.545	0.213
	Back	0.393	0.409	0.016	0.802	0.409
	Left side	0.244			0.244	0.244
	Right side	0.234	0.320		0.554	0.234
	Top side	0.168	0.240		0.408	0.168
	Bottom side	0.141			0.141	0.141
GSM1900	Front	0.481	0.344	0.012	0.825	0.493
	Back	0.547	0.409	0.016	0.956	0.563
	Left side	0.161			0.161	0.161
	Right side	0.044	0.320		0.364	0.044
	Top side	0.435	0.240		0.675	0.435
	Bottom side	0.792			0.792	0.792
WCDMA Band II	Front	0.267	0.344	0.012	0.611	0.279
	Back	0.551	0.409	0.016	0.960	0.567
	Left side	0.197			0.197	0.197
	Right side	0.010	0.320		0.330	0.010
	Top side	0.451	0.240		0.691	0.451
	Bottom side	0.630			0.630	0.630
WCDMA Band IV	Front	0.231	0.344	0.012	0.575	0.243
	Back	0.544	0.409	0.016	0.953	0.560
	Left side	0.209			0.209	0.209
	Right side	0.008	0.320		0.328	0.008
	Top side	0.594	0.240		0.834	0.594
	Bottom side	0.162			0.162	0.162
WCDMA Band V	Front	0.144	0.344	0.012	0.488	0.156
	Back	0.323	0.409	0.016	0.732	0.339
	Left side	0.169			0.169	0.169
	Right side	0.168	0.320		0.488	0.168
	Top side	0.125	0.240		0.365	0.125
	Bottom side	0.109			0.109	0.109
LTE Band 2	Front	0.230	0.344	0.012	0.574	0.242
	Back	0.554	0.409	0.016	0.963	0.570



	Left side	0.182			0.182	0.182
	Right side	0.015	0.320		0.335	0.015
	Top side	0.422	0.240		0.662	0.422
	Bottom side	0.739			0.739	0.739
LTE Band 5	Front	0.166	0.344	0.012	0.510	0.178
	Back	0.277	0.409	0.016	0.686	0.293
	Left side	0.238			0.238	0.238
	Right side	0.212	0.320		0.532	0.212
	Top side	0.143	0.240		0.383	0.143
	Bottom side	0.104			0.104	0.104
LTE Band 7	Front	0.369	0.344	0.012	0.713	0.381
	Back	0.713	0.409	0.016	1.122	0.729
	Left side	0.372			0.372	0.372
	Right side	0.097	0.320		0.417	0.097
	Top side	0.695	0.240		0.935	0.695
	Bottom side	0.418			0.418	0.418
LTE Band 26	Front	0.150	0.344	0.012	0.494	0.162
	Back	0.255	0.409	0.016	0.664	0.271
	Left side	0.206			0.206	0.206
	Right side	0.160	0.320		0.480	0.160
	Top side	0.127	0.240		0.367	0.127
	Bottom side	0.080			0.080	0.080
LTE Band 38	Front	0.184	0.344	0.012	0.528	0.196
	Back	0.321	0.409	0.016	0.730	0.337
	Left side	0.166			0.166	0.166
	Right side	0.059	0.320		0.379	0.059
	Top side	0.231	0.240		0.471	0.231
	Bottom side	0.211			0.211	0.211
LTE Band 40A	Front	0.199	0.344	0.012	0.543	0.211
	Back	0.386	0.409	0.016	0.795	0.402
	Left side	0.109			0.109	0.109
	Right side	0.043	0.320		0.363	0.043
	Top side	0.353	0.240		0.593	0.353
	Bottom side	0.223			0.223	0.223
LTE Band 40B	Front	0.227	0.344	0.012	0.571	0.239
	Back	0.507	0.409	0.016	0.916	0.523
	Left side	0.181			0.181	0.181
	Right side	0.026	0.320		0.346	0.026



	Top side	0.471	0.240		0.711	0.471
	Bottom side	0.132			0.132	0.132
LTE Band 41	Front	0.174	0.344	0.012	0.518	0.186
	Back	0.314	0.409	0.016	0.723	0.330
	Left side	0.133			0.133	0.133
	Right side	0.052	0.320		0.372	0.052
	Top side	0.227	0.240		0.467	0.227
	Bottom side	0.205			0.205	0.205
LTE Band 66/4	Front	0.377	0.344	0.012	0.721	0.389
	Back	0.630	0.409	0.016	1.039	0.646
	Left side	0.351			0.351	0.351
	Right side	0.018	0.320		0.338	0.018
	Top side	0.532	0.240		0.772	0.532
	Bottom side	0.172			0.172	0.172

18. Uncertainty Assessment

The component of uncertainty may generally be categorized according to the methods used to evaluate them. The evaluation of uncertainty by the statistical analysis of a series of observations is termed a Type A evaluation of uncertainty. The evaluation of uncertainty by means other than the statistical analysis of a series of observations is termed a Type B evaluation of uncertainty. Each component of uncertainty, however evaluated, is represented by an estimated standard deviation, termed standard uncertainty, which is determined by the positive square root of the estimated variance.

A Type A evaluation of standard uncertainty may be based on any valid statistical method for treating data. This includes calculating the standard deviation of the mean of a series of independent observations; using the method of least squares to fit a curve to the data in order to estimate the parameter of the curve and their standard deviations; or carrying out an analysis of variance in order to identify and quantify random effects in certain kinds of measurement.

A type B evaluation of standard uncertainty is typically based on scientific judgment using all of the relevant information available. These may include previous measurement data, experience, and knowledge of the behavior and properties of relevant materials and instruments, manufacture's specification, data provided in calibration reports and uncertainties assigned to reference data taken from handbooks. Broadly speaking, the uncertainty is either obtained from an outdoor source or obtained from an assumed distribution, such as the normal distribution, rectangular or triangular distributions indicated in table below.

Uncertainty	Normal	Rectangular	Triangular	U-Shape
Multi-plying Factor ^(a)	1/ κ ^(b)	1/ $\sqrt{3}$	1/ $\sqrt{6}$	1/ $\sqrt{2}$

Standard Uncertainty for Assumed Distribution

(a) standard uncertainty is determined as the product of the multiplying factor and the estimated range of variations in the measured quantity

(b) κ is the coverage factor

The combined standard uncertainty of the measurement result represents the estimated standard deviation of the result. It is obtained by combining the individual standard uncertainties of both Type A and Type B evaluation using the usual "root-sum-squares" (RSS) methods of combining standard deviations by taking the positive square root of the estimated variances.

Expanded uncertainty is a measure of uncertainty that defines an interval about the measurement result within which the measured value is confidently believed to lie. It is obtained by multiplying the combined standard uncertainty by a coverage factor. Typically, the coverage factor ranges from 2 to 3. Using a coverage factor allows the true value of a measured quantity to be specified with a defined probability within the specified uncertainty range. For purpose of this document, a coverage factor two is used, which



corresponds to confidence interval of about 95 %. The DASY uncertainty Budget is shown in the following tables.

Error Description	Uncertainty Value (±%)	Probability	Divisor	(Ci) 1g	(Ci) 10g	Standard Uncertainty (1g) (±%)	Standard Uncertainty (10g) (±%)
Measurement System							
Probe Calibration	6.0	N	1	1	1	6.0	6.0
Axial Isotropy	4.7	R	1.732	0.7	0.7	1.9	1.9
Hemispherical Isotropy	9.6	R	1.732	0.7	0.7	3.9	3.9
Boundary Effects	1.0	R	1.732	1	1	0.6	0.6
Linearity	4.7	R	1.732	1	1	2.7	2.7
System Detection Limits	1.0	R	1.732	1	1	0.6	0.6
Modulation Response	3.2	R	1.732	1	1	1.8	1.8
Readout Electronics	0.3	N	1	1	1	0.3	0.3
Response Time	0.0	R	1.732	1	1	0.0	0.0
Integration Time	2.6	R	1.732	1	1	1.5	1.5
RF Ambient Noise	3.0	R	1.732	1	1	1.7	1.7
RF Ambient Reflections	3.0	R	1.732	1	1	1.7	1.7
Probe Positioner	0.4	R	1.732	1	1	0.2	0.2
Probe Positioning	2.9	R	1.732	1	1	1.7	1.7
Max. SAR Eval.	2.0	R	1.732	1	1	1.2	1.2
Test Sample Related							
Device Positioning	3.0	N	1	1	1	3.0	3.0
Device Holder	3.6	N	1	1	1	0.089	0.089
Power Drift	5.0	R	1.732	1	1	2.9	2.9
Power Scaling	0.0	R	1.732	1	1	0.0	0.0
Phantom and Setup							
Phantom Uncertainty	6.1	R	1.732	1	1	3.5	3.5
SAR correction	0.0	R	1.732	1	0.84	0.0	0.0
Liquid Conductivity Repeatability	0.2	N	1	0.78	0.71	0.1	0.1
Liquid Conductivity (target)	5.0	R	1.732	0.78	0.71	2.3	2.0
Liquid Conductivity (mea.)	2.5	R	1.732	0.78	0.71	1.1	1.0
Temp. unc. - Conductivity	3.4	R	1.732	0.78	0.71	1.5	1.4
Liquid Permittivity Repeatability	0.15	N	1	0.23	0.26	0.0	0.0
Liquid Permittivity (target)	5.0	R	1.732	0.23	0.26	0.7	0.8
Liquid Permittivity (mea.)	2.5	R	1.732	0.23	0.26	0.3	0.4
Temp. unc. - Permittivity	0.83	R	1.732	0.23	0.26	0.1	0.1
Combined Std. Uncertainty						11.4%	11.4%
Coverage Factor for 95 %						K=2	K=2
Expanded STD Uncertainty						22.9%	22.7%



Error Description	Uncertainty Value (±%)	Probability	Divisor	(Ci) 1g	(Ci) 10g	Standard Uncertainty (1g) (±%)	Standard Uncertainty (10g) (±%)
Measurement System							
Probe Calibration	6.55	N	1	1	1	6.0	6.0
Axial Isotropy	4.7	R	1.732	0.7	0.7	1.9	1.9
Hemispherical Isotropy	9.6	R	1.732	0.7	0.7	3.9	3.9
Boundary Effects	2.0	R	1.732	1	1	1.2	1.2
Linearity	4.7	R	1.732	1	1	2.7	2.7
System Detection Limits	1.0	R	1.732	1	1	0.6	0.6
Modulation Response	3.2	R	1.732	1	1	1.8	1.8
Readout Electronics	0.3	N	1	1	1	0.3	0.3
Response Time	0.0	R	1.732	1	1	0.0	0.0
Integration Time	2.6	R	1.732	1	1	1.5	1.5
RF Ambient Noise	3.0	R	1.732	1	1	1.7	1.7
RF Ambient Reflections	3.0	R	1.732	1	1	1.7	1.7
Probe Positioner	0.4	R	1.732	1	1	0.2	0.2
Probe Positioning	6.7	R	1.732	1	1	3.9	3.9
Max. SAR Eval.	4.0	R	1.732	1	1	2.3	2.3
Test Sample Related							
Device Positioning	3.0	N	1	1	1	3.0	3.0
Device Holder	3.6	N	1	1	1	0.089	0.089
Power Drift	5.0	R	1.732	1	1	2.9	2.9
Power Scaling	0.0	R	1.732	1	1	0.0	0.0
Phantom and Setup							
Phantom Uncertainty	6.1	R	1.732	1	1	3.8	3.8
SAR correction	0.0	R	1.732	1	0.84	0.0	0.0
Liquid Conductivity Repeatability	0.2	N	1	0.78	0.71	0.1	0.1
Liquid Conductivity (target)	5.0	R	1.732	0.78	0.71	2.3	2.0
Liquid Conductivity (mea.)	2.5	R	1.732	0.78	0.71	1.1	1.0
Temp. unc. - Conductivity	3.4	R	1.732	0.78	0.71	1.5	1.4
Liquid Permittivity Repeatability	0.15	N	1	0.23	0.26	0.0	0.0
Liquid Permittivity (target)	5.0	R	1.732	0.23	0.26	0.7	0.8
Liquid Permittivity (mea.)	2.5	R	1.732	0.23	0.26	0.3	0.4
Temp. unc. - Permittivity	0.83	R	1.732	0.23	0.26	0.1	0.1
Combined Std. Uncertainty						12.5%	12.5%
Coverage Factor for 95 %						K=2	K=2
Expanded STD Uncertainty						25.1 %	25.1%



Annex A General Information

1. Identification of the Responsible Testing Laboratory

Laboratory Name:	Shenzhen Morlab Communications Technology Co., Ltd.
Laboratory Address:	FL.1-3, Building A, FeiYang Science Park, No.8 LongChang Road, Block 67, BaoAn District, ShenZhen, GuangDong Province, P. R. China
Telephone:	+86 755 36698555
Facsimile:	+86 755 36698525

2. Identification of the Responsible Testing Location

Name:	Shenzhen Morlab Communications Technology Co., Ltd.
Address:	FL.1-3, Building A, FeiYang Science Park, No.8 LongChang Road, Block 67, BaoAn District, ShenZhen, GuangDong Province, P. R. China

3. Facilities and Accreditations

The FCC designation number is CN1192, the test firm registration number is 226174.

Note:

The main report is end here and the other Annex (B,C,D,E,F) will be submitted separately.

***** END OF MAIN REPORT *****