




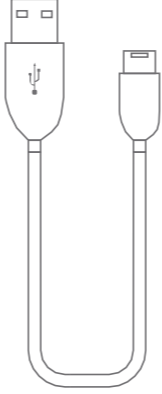
PBT103 User Manual

(Front)



Wireless Adjustable Headphones
PBT103 User Manual

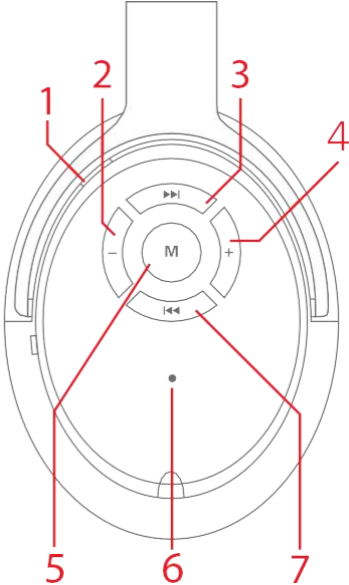
In the Box


Wireless


Micro

Location of Controls

1. Micro-USB Charging Port
2. [-] Button:
(Quick Press) Decrease volume
3. [>>] Button:
(Quick Press) Skip to next track
4. [+] Button:
(Quick Press) Increase volume
5. [M] Button:
 - (Long Press) Power ON/OFF
 - (Long Press) Reject incoming phone call
 - (Double Press) Redial last number called
 - (Quick Press) Play/pause playback, Answer/end phone call
6. LED Indicator
7. [<<] Button:
(Quick Press) Skip to previous track



. After a successful pairing, a tone will be heard and the LED indicator will

Powering ON/OFF

- Long press the [M] button. are powered ON.
- To turn the headphones OFF, long press the [M] button, again.

- Go to **Settings -> Bluetooth**
(Make sure that Bluetooth is



Pairing the Headphones

1. Long press the [M] button to power the headphones ON. A tone will be heard and the LED indicator will **flash RED and BLUE**.



The screenshots above are typical of many Bluetooth-enabled devices in the market today, and are used to assist in the explanation of the pairing process. Your Bluetooth-enabled device's interface and interaction with the speaker may differ slightly from the illustrations above.

Using the Headphones



Make sure you charge the headphones for at least 2 – 3 hours before using it for the first time.

Adjusting Volume

- Quick press the [–] button to decrease the volume of music playback.
- Quick press the [+] button to increase the volume of music playback.

NOTE: You may adjust the volume from both the headphones and your Bluetooth-paired device.

Phone Calls

- Quick press the [M] Button to answer an incoming phone call. Any media playback will automatically be paused during a phone call.
- Quick press the [M] button to end a phone call.
- Long press the [M] button to reject an incoming phone call and send straight to voice mail.
- Double press the [M] button to redial the last number called.

Using the Headphones (cont'd)

Playing Music

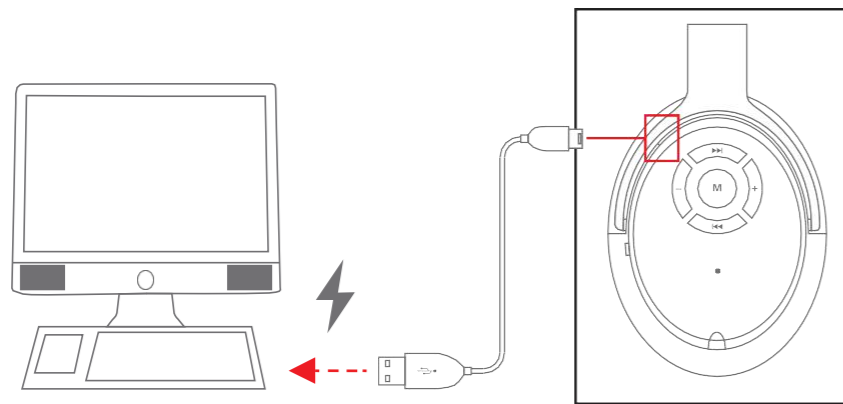
To enjoy music wirelessly on your headphones, make sure that they are properly paired to your Bluetooth-enabled device. If you are pairing the device for the first time, please consult the **Pairing the Headphones** section of this user guide.

- Quick press the [M] button to play/pause media playback.
- Quick press the [⏮] button to skip to the previous track.
- Quick press the [⏭] button to skip to the next track.

Charging the Headphones

Attach the small connector of the supplied micro-USB charging cable to the micro-USB charging port on the top of the earcup. Attach the large connector to a USB port on a computer, a USB charging device, or a **5V USB Adapter** (not included) and plug into a wall socket.

The LED indicator will turn **RED** while charging and turn off when charged.



Legal Information

READ THIS CAREFULLY AND SAVE FOR FUTURE REFERENCE

FCC STATEMENT

1. This device complies with Part 15 of the FCC Rules. Operation is subject to the following two conditions: (1) This device may not cause harmful interference, and (2) This device must accept any interference received, including interference that may cause undesired operation.
2. Changes or modifications not expressly approved by the party responsible for compliance could void the user's authority to operate the equipment.

FCC Radiation Exposure Statement:

The device has been evaluated to meet general RF exposure requirement. The device can be used in portable exposure condition without RF striction.

NOTE: This equipment has been tested and found to comply with the limits for a Class B digital device, pursuant to Part 15 of the FCC Rules. These limits are designed to provide reasonable protection against harmful interference in a residential installation. This equipment generates, uses and can radiate radio frequency energy and, if not installed and used in accordance with the instructions, may cause harmful interference to radio communications. However, there is no guarantee that interference will not occur in a particular installation. If the equipment does cause harmful interference to radio or television reception, which can be determined by turning the equipment off and on, the user is encouraged to try to correct the interference by one or more of the following measures:

- Reorient or relocate the receiving antenna.
- Increase the separation between the equipment and receiver.
- Connect the equipment into an outlet on a circuit different from that to which the receiver is connected.
- Consult the dealer or an experienced radio/TV technician for help.

Legal Information (cont'd)

WARNING Li-ion Battery Inside

This product is fitted with a Li-ion battery. Do not damage, open, or dismantle the battery and do not use it in damp and/or corrosive conditions. Use only with compatible chargers. Never dispose of batteries in a fire, and never expose them to high temperatures. Do not expose the product to temperatures exceeding 60°C (140°F).



The crossed-out garbage bin symbol means that you must not dispose of this product together with unsorted household waste.

Rain/Moisture Warning

- Do not expose the unit to extreme temperatures (heat or cold), open flames, humid conditions, or wet conditions.
- Do not submerge in water.
- Do not open this product or attempt to repair the unit yourself should it not be working.

Warranty Information

This product as supplied and distributed new by AIT, Inc. ("AIT") to the original consumer purchaser is warranted by AIT against defects in material and workmanship for a period of one year from your date of purchase ("Warranty"). In the unlikely event that this product is defective, or does not perform properly, you may within one year from your original date of purchase return it to the authorized service center for repair or exchange.

TO OBTAIN WARRANTY SERVICE:

- Go to our website portal to receive an SRO number.
- Provide proof of the date of purchase within the package (dated bill of sale).
- Prepay all shipping costs to the authorized service center, and remember to insure your return.
- Include a return shipping address (no P.O. Boxes), a telephone contact number, and the defective unit within the package.
- Describe the defect or reason you are returning the product.

Your product will be repaired or replaced, at our option, for the same or similar model of equal value if examination by the service center determines this product is defective. Products received damaged as a result of shipping, will require you to file a claim with the carrier.

The shipping address of the authorized service center is:

AIT, Inc.
Customer Service Dept. 36
c/o Southern Telecom
400 Kennedy Drive
Sayreville NJ 08872

For further customer service:
 SouthernTelecom.com
Click on **Product Support**

IN NO EVENT WILL AIT, ITS MANUFACTURERS, DISTRIBUTORS OR PLR IP HOLDINGS, LLC BE LIABLE FOR ANY INCIDENTAL, DIRECT, INDIRECT, SPECIAL, PUNITIVE OR CONSEQUENTIAL DAMAGES (SUCH AS, BUT NOT LIMITED TO, DAMAGES FOR LOSS OF PROFITS, BUSINESS, SAVINGS, DATA OR RECORDS) RELATED TO THIS PRODUCT. EXCEPT AS STATED HEREIN, NO OTHER WARRANTIES SHALL APPLY.



PLR IP Holdings, LLC, its licensees and affiliates, fully support all electronic waste initiatives. As responsible stewards of the environment, and to avoid violating established laws, you should properly dispose of this product in compliance with all applicable regulations, directives or other governances in the area where you reside. Please check with local authorities or the retailer where you purchased this product to determine a location where you can appropriately dispose of the product.

Polaroid, Polaroid & Pixel, Polaroid Color Spectrum, and Polaroid Classic Border Logo are trademarks of PLR, IP Holdings, LLC, used under license.



Instantly recognizable. Instantly reassuring. The Polaroid Classic Border and Polaroid Color Spectrum logos let you know you've purchased a product that exemplifies the best qualities of our brand and that contribute to our rich heritage of quality and innovation.