



itec®

深圳市丰禾原电子科技有限公司
SUNITEC ENTERPRISE CO.,LTD.

EA207(RTX_2.4GHz) Antenna SPEC

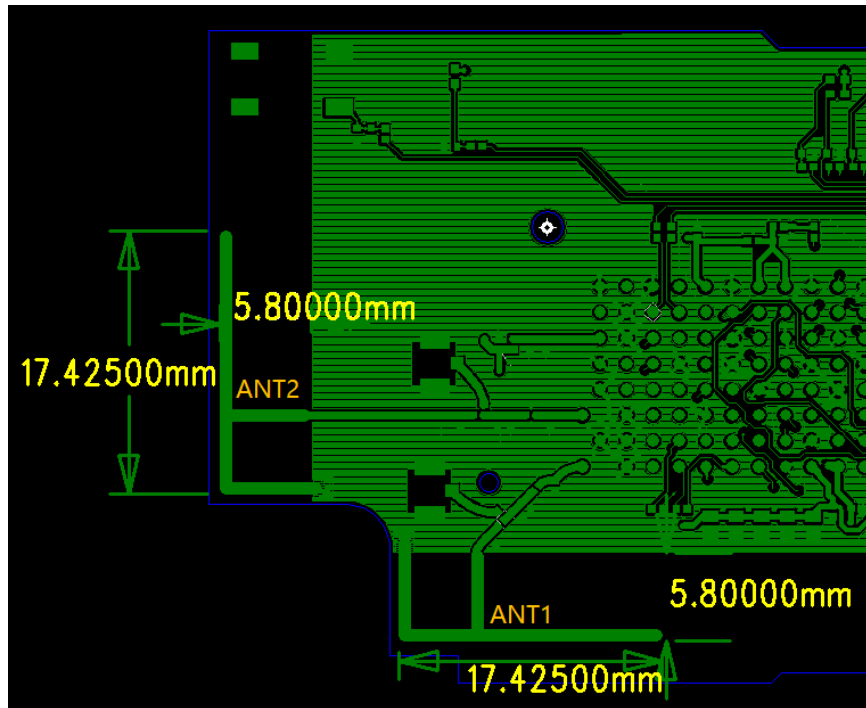
Tester:Lite Mo
Test data:2023.3.13



Sun itec®

深圳市丰禾原电子科技有限公司
SUNITEC ENTERPRISE CO.,LTD.

Product Appearance:





Test equipment:

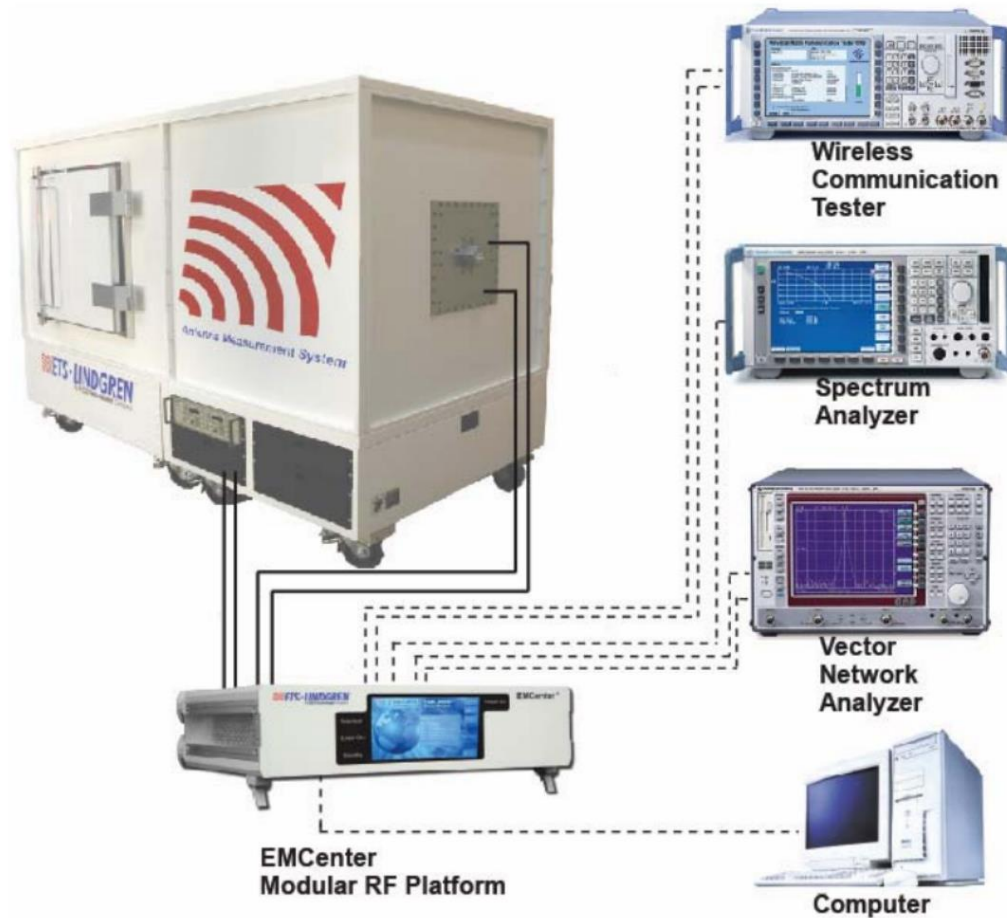
1.VECTOR NETWORK ANALYZER

Agilent E5071c

2. Antenna Measurement System

ETS-Lindgren Antenna Measurement System

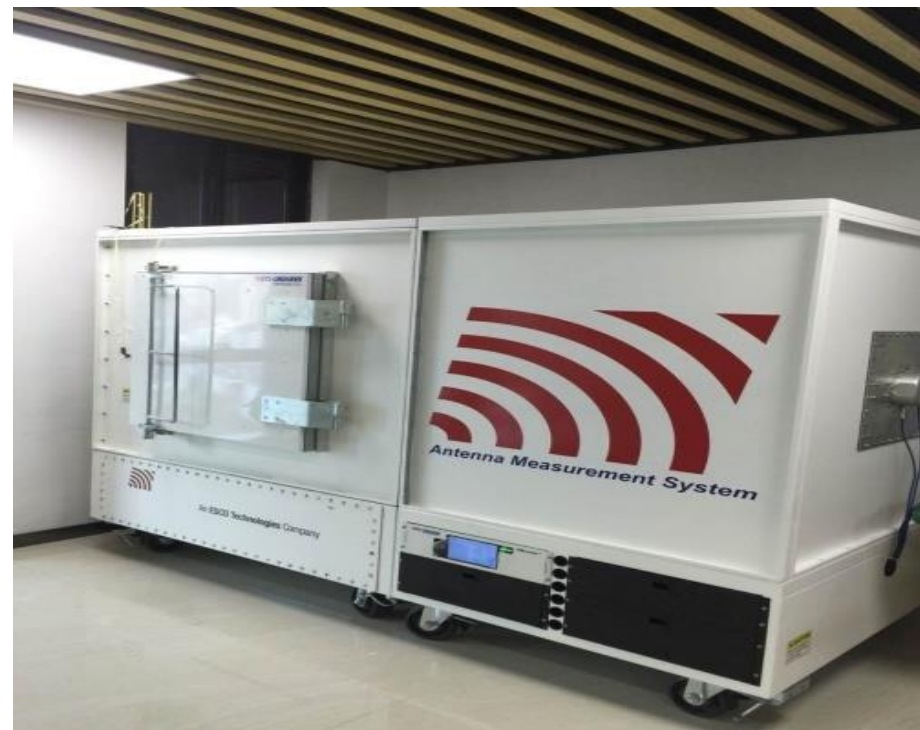
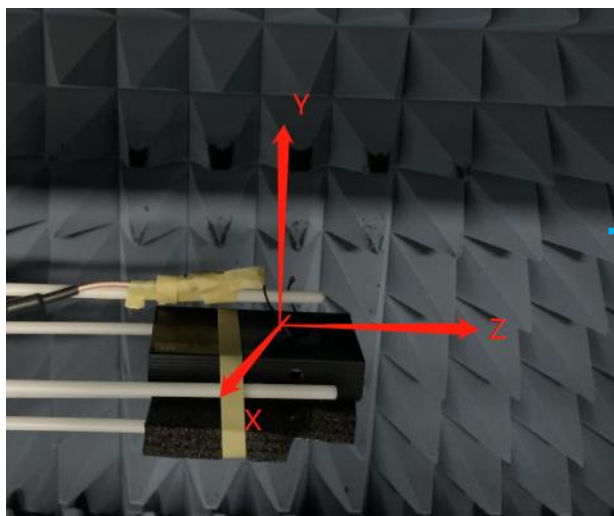
ETS-Lindgren Antenna Measurement System Configuration





ANT Test Settings:

(EA208)



**Electrical Characteristics:****ANT1**

Antenna Model Name	PCB Layout Antenna
Working Frequency Range	2450+/-50MHz
Impedance	50Ω
Max Efficiency(%)	70.65%@2476MHz
Max Gain(dBi)	2.20dBi@2470MHz

Frequency(MHz)	Efficiency (%)	Gain (dBi)
2402	60.00	0.69
2441	65.09	0.99
2480	70.32	2.02

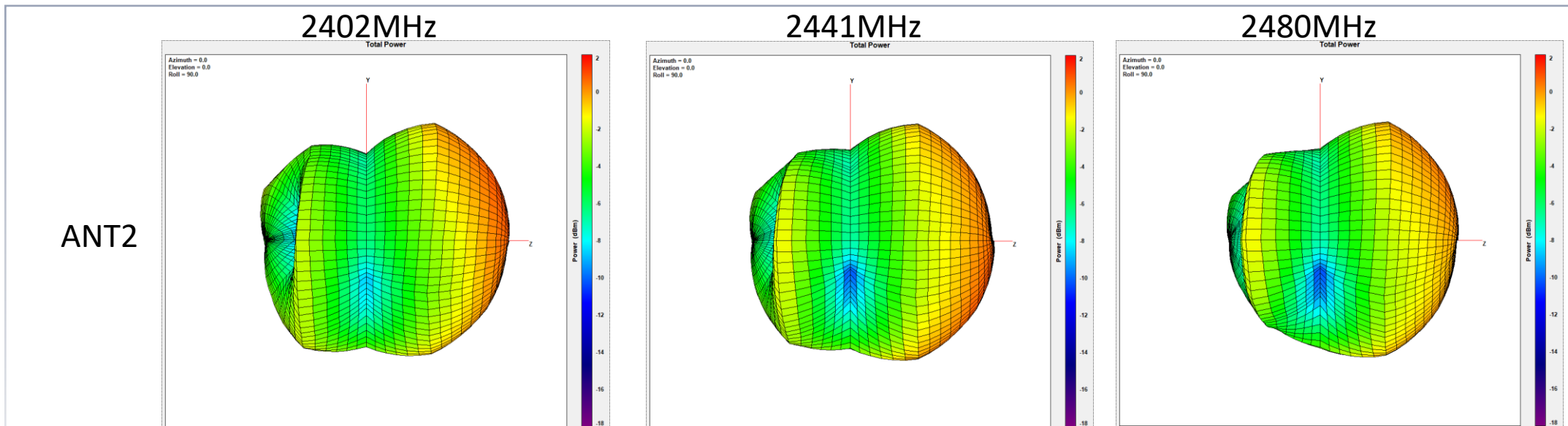
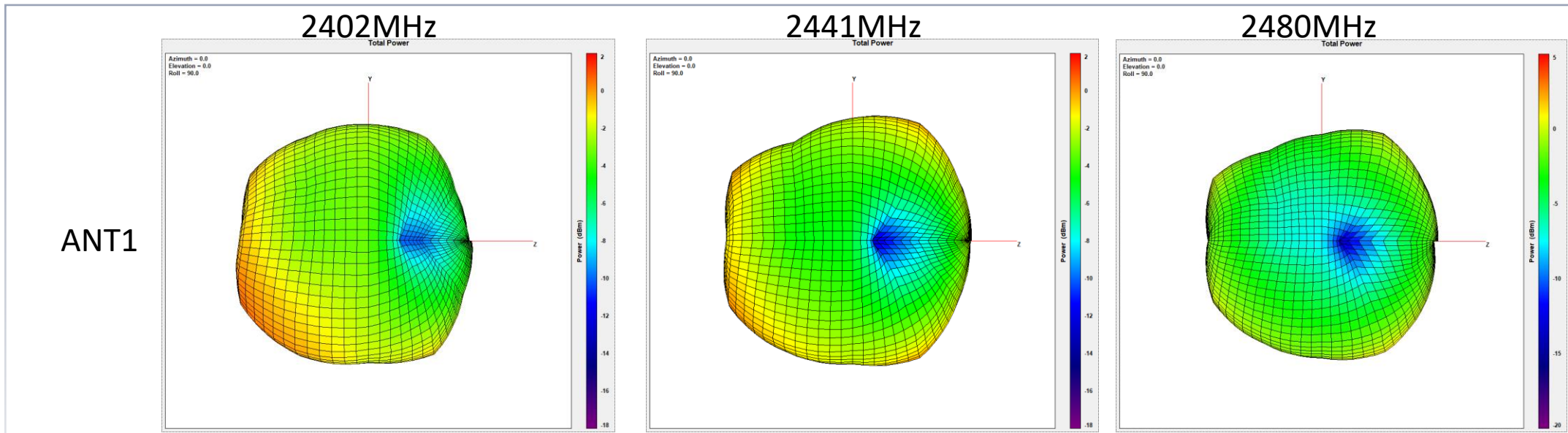
ANT2

Antenna Model Name	PCB Layout Antenna
Working Frequency Range	2450+/-50MHz
Impedance	50Ω
Max Efficiency(%)	57.90%@2459MHz
Max Gain(dBi)	1.62dBi@2413MHz

Frequency(MHz)	Efficiency (%)	Gain (dBi)
2402	53.90	1.25
2441	56.13	1.45
2480	53.92	0.84



3D Radiation Pattern :





Thanks