



SP880 POS Terminal

Quick Reference Guide

Accessories



- Please check the items when you receive the product and if there is anything defective or missing, please contact your terminal provider.
- For any other Plug Type requirement, please contact your terminal provider.

Introduction

- This new multi-functional and configurable POS terminal - SP880. Has different optional configurations and accessories. Please visit the website or contact the supplier.
- Read this guide to understand and make the best use of your terminal. It presents you the necessary information about use, installation, maintenance, safety and security recommendations.

WARNING:
Use only the power supply included to ensure best performance and safety. Maintenance should only be provided by Newland authorized technician. Failure to comply with these instructions will void the manufacturer's responsibility.

Overview of the Terminal

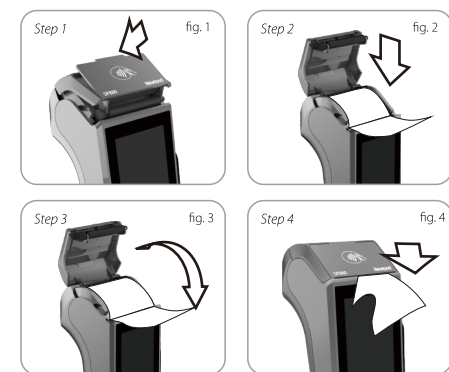


Installation

- **Recommendations**
The terminal should be kept away from very hot zones, protected from vibrations, dust, damp and electromagnetic radiation (computer screen, wireless intercom, etc.)

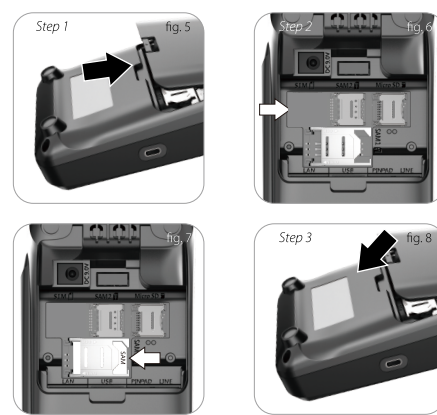
Operating temperature	32°F to 104°F (0°C ~ 40°C)
Storage and transportation temperature	-4°F to 140°F (-20°C ~ 60°C)
Relative humidity	5%~93% non-condensing at + 104°F(40°C)

Installing Paper Roll



- **Step 1:** Open the printer lid by lifting the printer lid at the notch. (fig.1)
- **Step 2:** Insert the paper roll in the compartment following the directions shown on the picture, and pull out of the paper until it protrudes from the top of the terminal. (fig.2)
- **Step 3:** Maintain the paper and close the lid until a 'click' sound is heard. (fig.3)
- **Step 4:** Remove the excess paper by tearing along the serrated edge. (fig.4)

Installing SAM/MicroSD Card



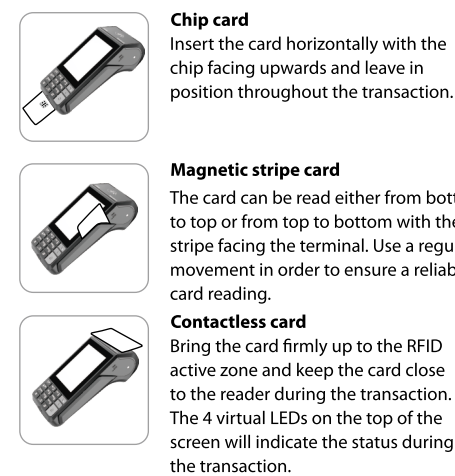
Warning:
Before installing these cards, the terminal should be powered off by disconnecting the power supply.

- **Step 1:** Turn the terminal facing down, and open the back cover. (fig.5)
- **Step 2:** According to the SAM position indicated by the engraved marks or sticker pasted on the rear case, load the required cards. Be sure to put the cut corner as indicated by the engraved or sticker marks. (fig.6-fig.7)
- **Step 3:** put back the cover cover and turn the terminal facing up.(fig.8)
- **Note**
SAM/MicroSD card is optional according to product configuration.

Switching On/Off the Terminal

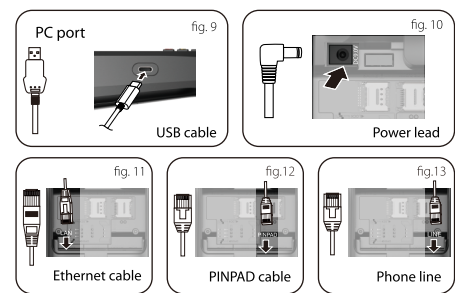
- **Power on:** press and hold **[Power]** on the keyboard for about 2 seconds until a beep heard and the LCD backlight is on. The terminal is power on.
- **Power off:** Press and hold **[Power]** on the keyboard for 2~3 seconds and there will be a "power off" sign prompted on the screen, then the terminal will shutdown.
- **Note:** If there is a crash, please press and hold **[Power]** for about 10 seconds or unplug the power supply to force shutdown.

Reading Card



- **Chip card**
Insert the card horizontally with the chip facing upwards and leave in position throughout the transaction.
- **Magnetic stripe card**
The card can be read either from bottom to top or from top to bottom with the stripe facing the terminal. Use a regular movement in order to ensure a reliable card reading.
- **Contactless card**
Bring the card firmly up to the RFID active zone and keep the card close to the reader during the transaction. The 4 virtual LEDs on the top of the screen will indicate the status during the transaction.

External Connections



- 1. Connect PC and POS terminal (fig.9) for data translate and download firmware.
- 2. Connect the power adaptor and POS terminal (fig.10) for power supply.
- 3. Connect the Ethernet cable and POS terminal (fig.11) for Ethernet communication.
- 4. Connect the Pinpad and POS terminal (fig.12) for the external password keyboard.
- 5. Connect the phone line and POS terminal (fig.13) for modem communication. If there is phone extension, connect the extension line to "Phone" interface.
- 6. If you need to connect other peripherals, please contact terminal provider.

Warning:
Do not connect any peripheral equipment not authenticated by Newland to avoid damage.

Safety

- 1. Please be sure to take to comply with the specifications in this document.
- 2. Do not use in proximity of potentially flammable gases or substances.
- 3. Do not disassemble the terminal and power adapter.
- 4. Cut off the power immediately, when there is unusual smell, overheating or smoke.
- 5. Do not use in a near water or humid environment to prevent liquid from entering the device.
- 6. Do not use the terminal in extremely cold and hot zones, such as near a fire.
- 7. Do not drop, throw or bend the device.
- 8. Use in clean environment to avoid entry of small objects into POS terminal.
- 9. Do not use near hospital equipment without permission.
- 10. Do not use terminals with radio communication on and near the aircraft, or in any other place where radio communication is prohibited.

Security of Your Terminal

Your device fulfills current applicable PCI PTS security requirements. Upon receipt your terminal you should check for signs of tampering of the terminal. It is strongly advised that these checks are performed regularly after receipt (Be sure the circumstance is brightness or you may use a light tool as well).

- 1. Check the product name and the hardware version on the label to ensure the product is correct.
- 2. Check if there are bugs hidden in the Chip card slot before Chip card is inserted.
- 3. Check whether the magnetic card slot has the exception of adding magnetic head.
- 4. Check the appearance of the product to guarantee the device without being modified.
- 5. Before entering the PIN, the user should be aware of his/her surrounding and use the body, fingers or protection to block the peeper's sight.

FCC Statement

- Any Changes or modifications not expressly approved by the party responsible for compliance could void the user's authority to operate the equipment.
This device complies with part 15 of the FCC Rules. Operation is subject to the following two conditions:
(1) This device may not cause harmful interference, and
(2) this device must accept any interference received, including interference that may cause undesired operation.
Note: This equipment has been tested and found to comply with the limits for a Class B digital device, pursuant to part 15 of the FCC Rules. These limits are designed to provide reasonable protection against harmful interference in a residential installation. This equipment generates, uses and can radiate radio frequency energy and, if not installed and used in accordance with the instructions, may cause harmful interference to radio communications. However, there is no guarantee that interference will not occur in a particular installation. If this equipment does cause harmful interference to radio or television reception, which can be determined by turning the equipment off and on, the user is encouraged to try to correct the interference by one or more of the following measures:
—Reorient or relocate the receiving antenna.
—Increase the separation between the equipment and receiver.
—Connect the equipment into an outlet on a circuit different from that to which the receiver is connected.
—Consult the dealer or an experienced radio/TV technician for help.

RF exposure

- This equipment complies with FCC radiation exposure limits set forth for an uncontrolled environment. This equipment should be installed and operated with minimum distance 20cm between the radiator & your body. This transmitter must not be co-located or operating in conjunction with any other antenna or transmitter.

Troubleshooting

- **I. The terminal does not turn on**
1. Check that the power supply is came with the product.
2. Check that the power supply is correctly installed.
- **II. Can't read the magnetic card or the card has a low success rate**
1. Check that the magnetic card is swiped correctly (with magnetic band on terminal side).
2. Check if there is any bugs or dirt on the magnetic head. Please clean it.
- **III. Chip cards are not read**
1. Make sure you have inserted correctly the Chip card into the chip card reader (with the chip facing upwards).
2. Check if the card slot is blocked or if the card is in correct position.
- **IV. Ticket cannot be printed or printed incompletely**
1. Check the presence and proper positioning of the paper roll.
2. Check if the type of paper used is correct.
3. Check if there is any shredded paper in the printer, clean it.

©2018 Fujian Newland Payment Technology Co., Ltd. All rights reserved.

This guide is for reference only. The actual product, including but not limited to color, size, and screen layout, may vary. All statements, information and recommendations in this guide do not constitute a warranty of any kind, express or implied.

Fujian Newland Payment Technology Co., Ltd. retains full copyright ownership, rights and protection in this guide. No part of this guide may be copied, added or deleted, excerpted, reproduced or imitated partially and wholly in any form or by any means without prior written consent of Fujian Newland Payment Technology Co., Ltd. and its affiliates.
Fujian Newland Payment Technology Co., Ltd.
No. B602, Building #1, Haixia Jingmao Plaza
Fuzhou Bonded Area 350015, Fujian, China
<http://www.newlandpayment.com>