

SPECIFICATION

SHEET FOR APPROVAL

(Revision: R: A1)

CUSTOMER(客户名称)	Newland
CS P/N(客户机种)	N750P
PART NAME(品名)	LTE
FREQUENCY(频率)	617-960MHz, 1710-2690MHz。
ZTX NO.(物料编号)	E.03.01051
DATE(日期)	2024-6-5

CUSTOMER			
QA CHECKED	ME CHECKED	RF CHECKED	MANAGER CHECKED

ZHONG TIAN XUN TECHNOLOGY CO., LTD				
MANAGER CHECKED	MANAGER CHECKED	ME CHECKED	RF CHECKED	LISTER



福州中天迅通信技术有限公司

ZHONGTIAN XUN Communication Technology Co.,Ltd.

ANTENNA SPECIFICATION

CUS P/N : N750P LTE

ApplicationDate:Jun,5,2024

Rev: R:A1

ZTX P/N : N750P LTE

Editor:

Page 2 of 18

Revision history

版本 version	日期 date	状态 status
A1	2024-6-5	初版。 First issue.



ANTENNA SPECIFICATION

CUS P/N : N750P LTE

ApplicationDate:Jun,5,2024

Rev: R:A1

ZTX P/N : N750P LTE

Editor:

Page 3 of 18

Index

	<i>Revision history</i>	
1.	<i>Test equipment</i>	4
2.	<i>Antenna test data</i>	5~16
	2-1 <i>VSWR</i>	5
	2-2 <i>Antenna passive test</i>	6~11
	2-3 <i>3D radiation drawing</i>	12
	2-4 <i>Active test data</i>	13~14
	2-5 <i>Matching circuit</i>	15
	2-6 <i>Environment treatment</i>	16
3.	<i>Mechanical Specification</i>	17
4.	<i>The packing way</i>	18



ANTENNA SPECIFICATION

CUS P/N : N750P LTE

ApplicationDate:Jun,5,2024

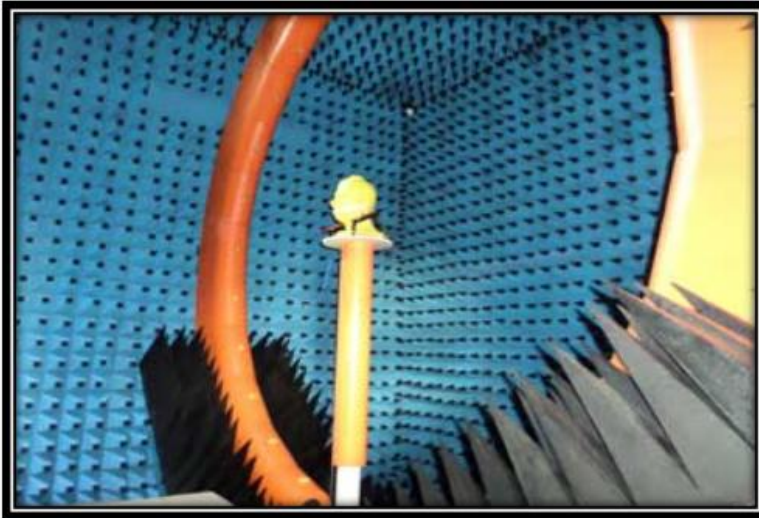
Rev: R:A1

ZTX P/N : N750P LTE

Editor:

Page 4 of 18

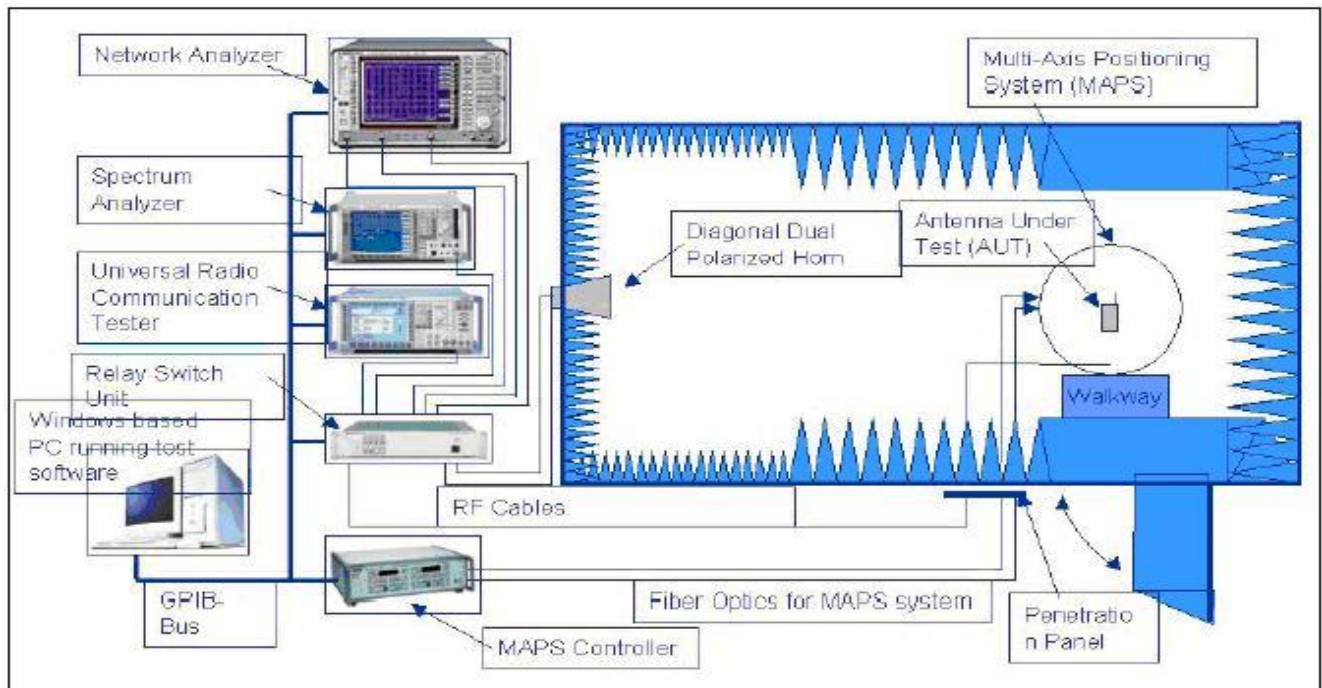
1. Test equipment



Owned 6 microwave dark room, equipped 2 sets world leading France Satimo SG24 OTA certification test systems (one in SHENZHEN, another one in Shanghai), ETS OTA Standard test system, Blue test reverberation test system which is High repeatability, high accuracy and high resolution. It can quickly provide accurate test reports, fully meet the CITA standards.

Testing range:

Support active, passive testing of GSM/CDMA/WCDMA/TD-SCDMA/LTE/WIFI/WLAN/WiMax/BT/GPS/MIMO/UWB within 0.4-6G.



ANTENNA SPECIFICATION

CUS P/N : N750P LTE

ApplicationDate:Jun,5,2024

Rev: R:A1

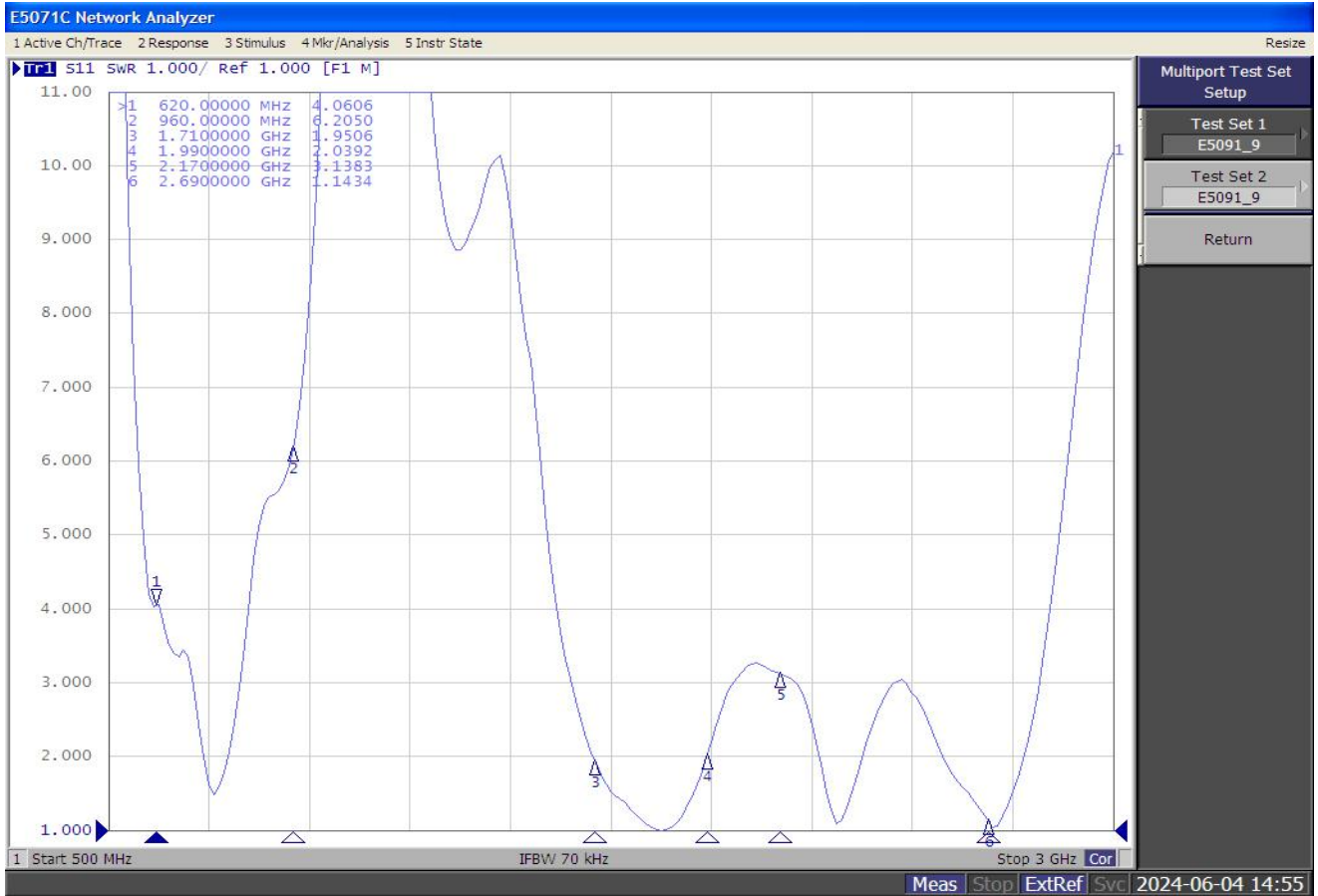
ZTX P/N : N750P LTE

Editor:

Page 5 of 18

2. Antenna test data

2-1 VSWR



ANTENNA SPECIFICATION

CUS P/N : N750P LTE

ApplicationDate:Jun,5,2024

Rev: R:A1

ZTX P/N : N750P LTE

Editor:

Page 6 of 18

2-2 Antenna passive test

chNo	Freq (MHz)	Gain (dBi)	Efficiency_Pcent (%)
1	617	-5.200456945	16.1381034
2	627	-4.270476923	19.32657738
3	637	-3.522640467	22.40227783
4	647	-2.736246171	26.04196193
5	657	-2.042413392	30.60945491
6	667	-1.612513909	34.72735604
7	677	-0.701790435	37.23063571
8	687	0.000146721	37.98965891
9	697	0.370199485	37.74518125
10	707	0.254870148	37.39804937
11	717	-0.384836583	34.77584707
12	727	-1.222911969	29.85598178
13	737	-1.808916492	26.83471059



ANTENNA SPECIFICATION

CUS P/N : N750P LTE

ApplicationDate:Jun,5,2024

Rev: R:A1

ZTX P/N : N750P LTE

Editor:

Page 7 of 18

14	747	-2.236699808	27.1701154
15	757	-2.454365317	29.57663274
16	767	-1.244415307	36.1316356
17	777	-0.225171495	42.3100009
18	787	-0.075548911	43.85242131
19	797	-0.030652884	45.62546137
20	807	0.194885169	46.15405967
21	817	0.026450362	46.63570596
22	827	-0.054340203	45.12230946
23	837	0.182506362	44.67673767
24	847	0.261040278	41.80828118
25	857	-0.046128868	39.79874165
26	867	-0.075807902	35.64488168
27	877	-0.3210418	31.67373393
28	887	-0.415414836	32.07550966



ANTENNA SPECIFICATION

CUS P/N : N750P LTE

ApplicationDate:Jun,5,2024

Rev: R:A1

ZTX P/N : N750P LTE

Editor:

Page 8 of 18

29	897	-0.752151674	30.6015931
30	907	-1.537493258	26.02953048
31	917	-2.624912511	20.70882336
32	927	-2.589154971	19.91606013
33	937	-2.530946178	21.64824062
34	947	-2.865448884	20.68578933
35	957	-3.652608903	17.76947907
36	960	-3.947623427	16.78112985
37	1710	-0.124392917	42.09592766
38	1730	0.417926724	43.27330358
39	1750	0.955328724	46.27720254
40	1770	0.993085652	47.88974939
41	1790	0.477740861	46.26189894
42	1810	-0.705694927	45.09866574
43	1830	-0.121899597	45.66303763



ANTENNA SPECIFICATION

CUS P/N : N750P LTE

ApplicationDate:Jun,5,2024

Rev: R:A1

ZTX P/N : N750P LTE

Editor:

Page 9 of 18

44	1850	-0.386310071	41.01033521
45	1870	-0.055918797	40.88196738
46	1890	0.285134588	41.98678826
47	1910	0.169035085	38.48163037
48	1930	0.11315611	37.16115184
49	1950	-0.040315834	36.39274307
50	1970	-0.353327948	35.0638783
51	1990	-0.153942618	32.80929579
52	2010	-0.660499798	29.44747867
53	2030	-0.897446447	28.53868158
54	2050	-1.369155975	27.33504957
55	2070	-1.900531073	26.32949512
56	2090	-2.381096537	24.8277033
57	2110	-2.503804711	22.98969908
58	2130	-2.545639025	22.02383314



ANTENNA SPECIFICATION

CUS P/N : N750P LTE

ApplicationDate:Jun,5,2024

Rev: R:A1

ZTX P/N : N750P LTE

Editor:

Page 10 of 18

59	2150	-2.896537059	20.32483974
60	2170	-2.869049767	19.32307662
61	2300	-1.457026992	29.82716716
62	2320	-1.353792918	30.60448157
63	2340	-1.46795914	28.27817374
64	2360	-1.774904846	27.72750718
65	2380	-1.242474309	28.80986366
66	2400	-0.807346444	30.28112964
67	2500	-2.563172457	24.96039959
68	2520	-2.960709998	24.60097489
69	2540	-3.404630132	23.85662181
70	2560	-3.696901337	24.3199426
71	2580	-3.487997861	23.84002824
72	2600	-3.122320549	23.56974071
73	2620	-2.817128357	22.87889336



ANTENNA SPECIFICATION

CUS P/N : N750P LTE

ApplicationDate:Jun,5,2024

Rev: R:A1

ZTX P/N : N750P LTE

Editor:

Page 11 of 18

74	2640	-2.136469622	23.32698482
75	2660	-1.445421578	25.10746089
76	2680	-1.098970636	25.76996991
77	2690	-0.724197527	26.98845089



ANTENNA SPECIFICATION

CUS P/N : N750P LTE

ApplicationDate:Jun,5,2024

Rev: R:A1

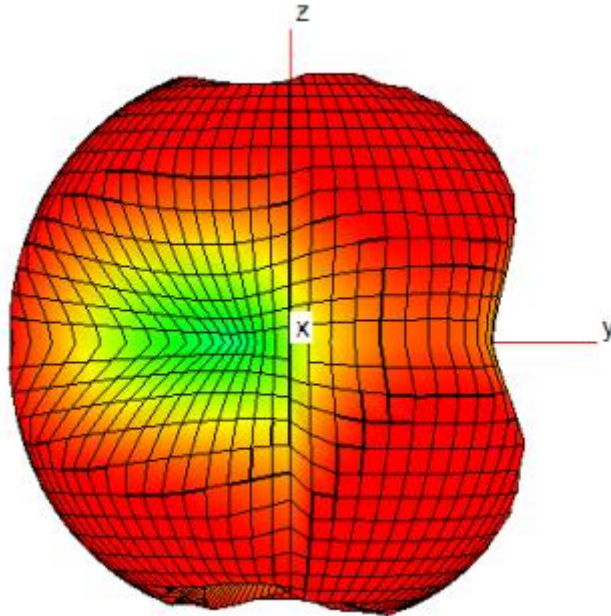
ZTX P/N : N750P LTE

Editor:

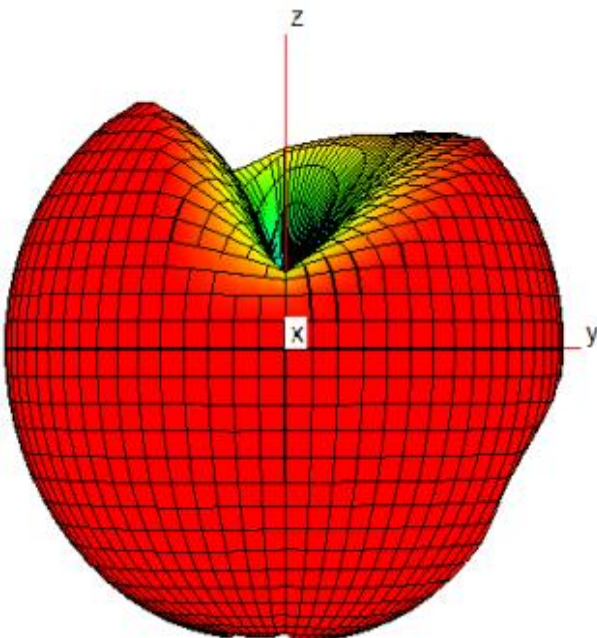
Page 12 of 18

2-3 3D radiation drawing

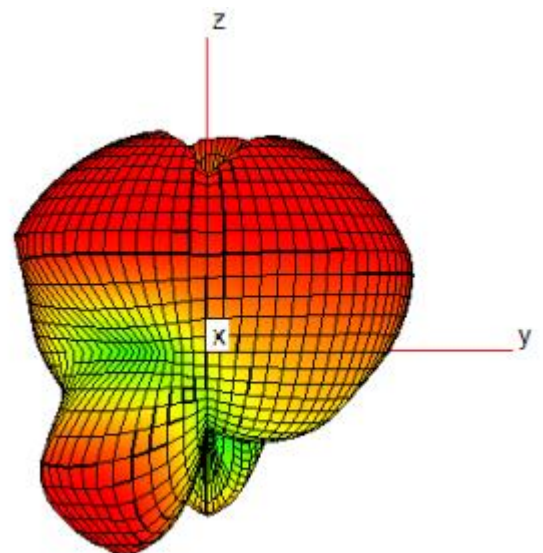
750MHZ



1900MHZ



2560MHZ



ANTENNA SPECIFICATION

CUS P/N : N750P LTE

ApplicationDate:Jun,5,2024

Rev: R:A1

ZTX P/N : N750P LTE

Editor:

Page 13 of 18

2-4 Active test data

频段 Frequency	参数\信道 Parameter/channel	650	900	1150
band2	TRP	18.17	18.19	18.26
	TIS	-88.1	-89.22	-89.03
频段 Frequency	参数\信道 Parameter/channel	2000	2175	2350
band4	TRP	17.06	17.6	18.06
	TIS	-91.28	-91.73	-91.98
频段 Frequency	参数\信道	2450	2525	2600
band5	TRP	18.35	18.67	18.1
	TIS	-82.27	-86.73	-88.23
频段	参数\信道 Parameter/channel	2850	3100	3350
band7	TRP	18.02	17.95	17.98
	TIS	-89.8	-88.78	-87.94
频段 Frequency	参数\信道 Parameter/channel		5230	
band13	TRP		16.08	
	TIS		-81.77	
频段 Frequency	参数\信道 Parameter/channel		5230	
band14	TRP		16.93	



ANTENNA SPECIFICATION

CUS P/N : N750P LTE

ApplicationDate:Jun,5,2024

Rev: R:A1

ZTX P/N : N750P LTE

Editor:

Page 14 of 18

	TIS		-82.05	
频段 Frequency	参数\信道 Parameter/channel	5780	5790	5800
band17	TRP	18.06	17.9	17.81
	TIS	-85.05	-85.38	-85.14
频段 Frequency	参数\信道 Parameter/channel	8100	8365	8600
band25	TRP	17.97	17.81	17.81
	TIS	-89.29	-89.22	-88.91
频段 Frequency	参数\信道 Parameter/channel	8740	8865	8990
band26	TRP	18.02	18.48	18.08
	TIS	-87.02	-82.39	-88.34
频段 Frequency	参数\信道 Parameter/channel	40450	40740	40940
band41	TRP	17.9	17.63	16.99
	TIS	-87.68	-87.91	-86.7
频段 Frequency	参数\信道 Parameter/channel	132022	132322	132622
band66	TRP	16.76	17.86	18.38
	TIS	-91.19	-91.79	-91.79



ANTENNA SPECIFICATION

CUS P/N : N750P LTE

ApplicationDate:Jun,5,2024

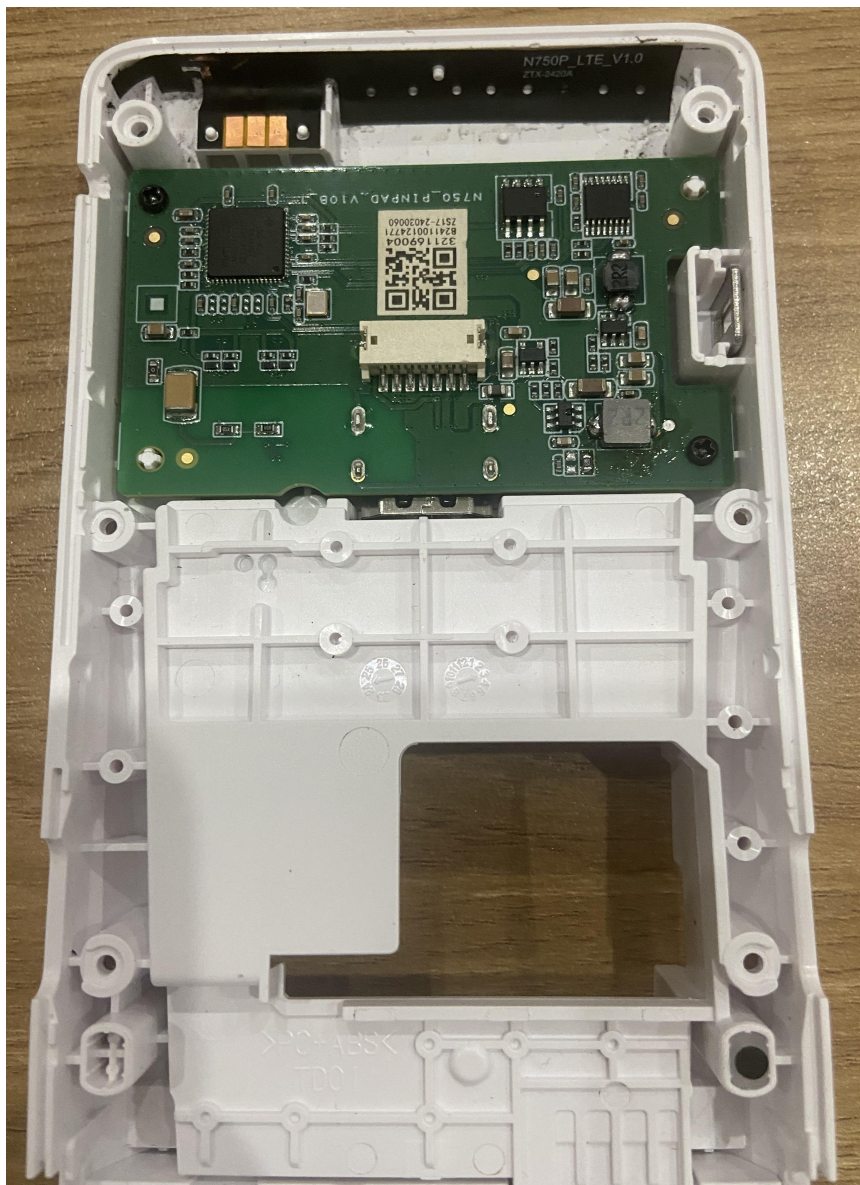
Rev: R:A1

ZTX P/N : N750P LTE

Editor:

Page 16 of 18

2-6 Environment treatment



ANTENNA SPECIFICATION

CUS P/N : N750P LTE

ApplicationDate:Jun,5,2024

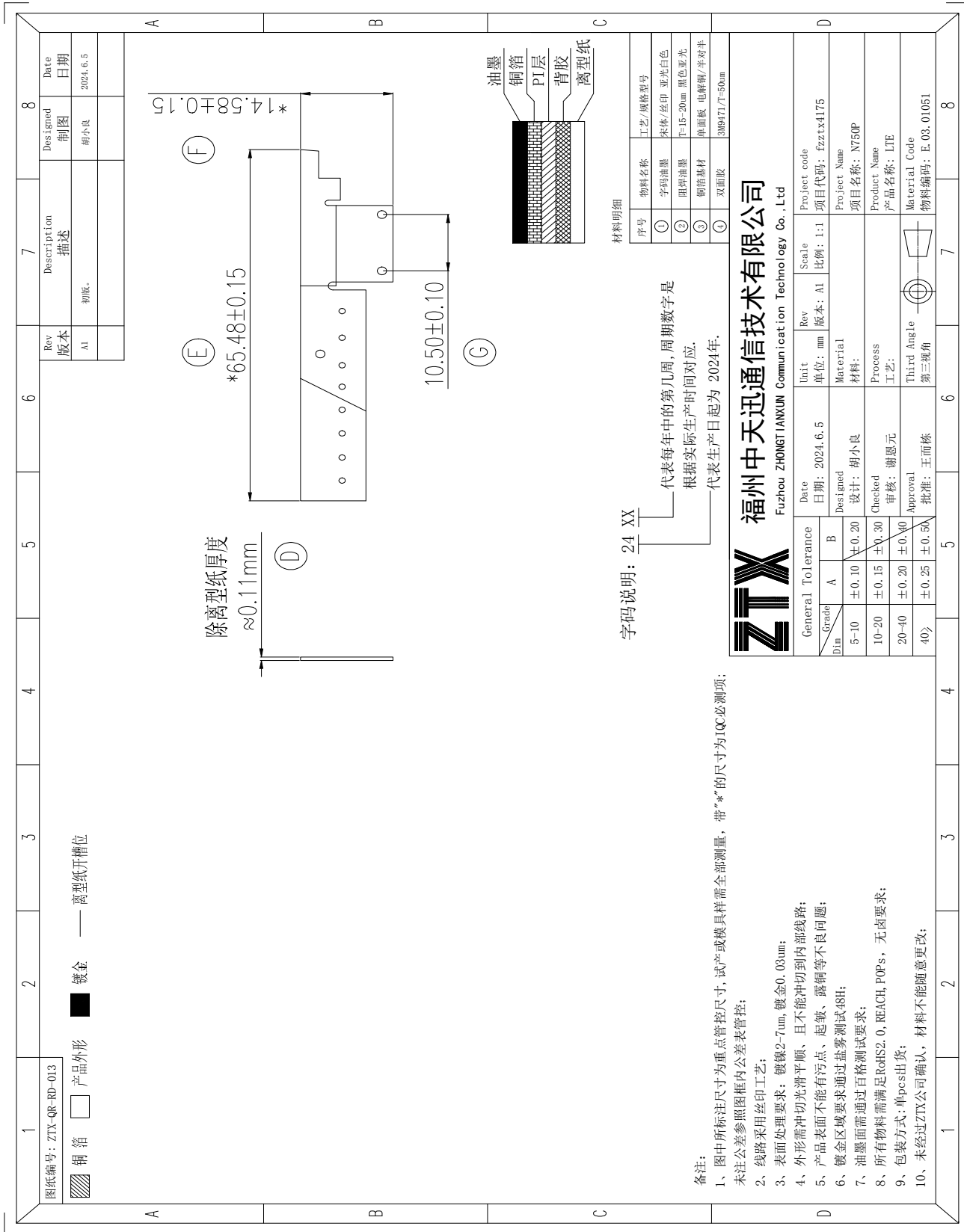
Rev: R:A1

ZTX P/N : N750P LTE

Editor:

Page 17 of 18

3. Mechanical Specification



ANTENNA SPECIFICATION

CUS P/N : N750P LTE

ApplicationDate:Jun,5,2024

Rev: R:A1

ZTX P/N : N750P LTE

Editor:

Page 18 of 18

4.The packing way

福州中天迅通信技术有限公司 Fuzhou ZHONGTIANXUN Communication Technology Co.,Ltd					作业指导书				
产品名称	产品型号	文件编号	版本	工序序号/名称	工序工时	日产量			
LTE	N750P	ZTX-QD-WI-024	A1	包装	/	/			
<p>作业方法 (自该工序作业合格后,方能流入下一道工序)</p> <p>注意事项:</p> <ol style="list-style-type: none"> 发现重量有超出公差范围时,须对数量进行清点 外箱只允许有1个物料标签,其余如有多余标签时必须将其清理干净。 条码标签在贴于外箱时,应尽量平整,避免因起皱影响客户入库。 条码需清晰可扫描 									
<p>1. 产品采用单PCS出货,每(100pcs)产品用90*130mmPE封口膜</p> <p>2. 将包装好的产品装入纸箱,每箱数量根据订单数量要求进行数量确认,保证每箱装入的数量正确。</p> <p>3. 在外箱上除标签贴外,不能有任何丝印(即空白纸箱)出货;</p> <p>4. 在装好产品的箱子上将外箱标签及物料追溯码,RFID贴于外箱的右上角,打印标签内容包括(生产厂家,型号,产品名称,客户编码,数量,订单号,日期,QA检验,)</p>									
<p>物料编号 物料名称及规格 用量 工/夹具治具</p>									
<p>修订内容</p> <p>版本 修订日期 修订人</p>									
<p>制订 胡小良 审核 易爱玲 品质确认 杨登山 批准 张武民</p>									



图1: 确认数量



图2: 每10小袋用大PE袋包装



图3: 小标签及追溯码

图4: 贴外箱标签, 封箱