



中认信通

CHINA CERTIFICATION ICT CO., LTD (DONGGUAN)



SAR TEST REPORT

Applicant: Fujian Newland Payment Technology Co.,Ltd.

Address: No. B602, Building #1, HaixiaJingmaoPlaza, Fuzhou Bonded Area
350015, Fuzhou, Fujian, China

FCC ID: 2AM6U-NA750

Product Name: POS Terminal

Model Number: N750

Standard(s): 47 CFR Part 2(2.1093)

The above equipment has been tested and found compliant with the requirement of the relative standards by China Certification ICT Co., Ltd (Dongguan)

Report Number: CR230631809-20

Date Of Issue: 2023-07-18

Reviewed By: Karl Gong

Karl Gong

Title: SAR Engineer

Test Laboratory: China Certification ICT Co., Ltd (Dongguan)

No. 113, Pingkang Road, Dalang Town, Dongguan,
Guangdong, China

Tel: +86-769-82016888

SAR TEST RESULTSSUMMARY

Operation Frequency Bands	Highest Reported 1g SAR (W/kg)		Limits (W/kg)
	Body SAR (Gap 10mm)		
LTEBand7	0.41		1.6
LTEBand12&17	0.11		
LTEBand13	0.19		
LTEBand14	0.19		
LTEBand25&2	0.43		
LTEBand26&5	0.14		
LTEBand41	0.25		
LTEBand66&4	0.47		
LTEBand71	0.07		
WLAN 2.4G	0.26		
WLAN5.2G	0.54		
WLAN5.3G	1.09		
WLAN5.6G	0.46		
WLAN5.8G	0.22		
Bluetooth	0.03		
Maximum Simultaneous Transmission SAR			
Items	Body SAR (Gap 10mm)	Hotspot (Gap 10mm)	Limits
Sum SAR(W/kg)	1.56	1.01	1.6
SPLSR	N/A	N/A	0.04
EUT Received Date:	2023/06/11		
Test Date:	2023/06/14~2023/06/25		
Test Result:	Pass		

Test Facility

The Test site used by China Certification ICT Co., Ltd (Dongguan) to collect test data is located on the No. 113, Pingkang Road, Dalang Town, Dongguan, Guangdong, China.

The lab has been recognized as the FCC accredited lab under the KDB 974614 D01 and is listed in the FCC Public Access Link (PAL) database, FCC Registration No. : 442868, the FCC Designation No. : CN1314.

The lab has been recognized by Innovation, Science and Economic Development Canada to test to Canadian radio equipment requirements, the CAB identifier: CN0123.

Declarations

China Certification ICT Co., Ltd (Dongguan) is not responsible for the authenticity of any test data provided by the applicant. Data included from the applicant that may affect test results are marked with a triangle symbol “▲”. Customer model name, addresses, names, trademarks etc. are not considered data.

Unless otherwise stated the results shown in this test report refer only to the sample(s) tested.

This report cannot be reproduced except in full, without prior written approval of the Company.

This report is valid only with a valid digital signature. The digital signature may be available only under the Adobe software above version 7.0.

This report may contain data that are not covered by the accreditation scope and shall be marked with an asterisk “★”.

CONTENTS

SAR TEST RESULTSSUMMARY	2
TEST FACILITY	3
DECLARATIONS	3
DOCUMENT REVISION HISTORY	6
1. GENERAL INFORMATION	7
1.1 PRODUCT DESCRIPTION FOR EQUIPMENT UNDER TEST (EUT)	7
1.2 TEST SPECIFICATION, METHODS AND PROCEDURES	9
1.3 SAR LIMTS	10
2. SAR MEASUREMENTSYSTEM	11
3. EQUIPMENT LIST AND CALIBRATION	18
3.1 EQUIPMENTS LIST & CALIBRATION INFORMATION	18
4. SAR MEASUREMENT SYSTEM VERIFICATION	19
4.1 LIQUID VERIFICATION	19
4.2 SYSTEM ACCURACY VERIFICATION	22
4.3 SAR SYSTEM VALIDATION DATA	23
5. EUT TEST STRATEGY AND METHODOLOGY	33
5.1 TEST POSITIONS FOR DEVICE OPERATING NEXT TO A PERSON’S EAR	33
5.2 CHEEK/TOUCH POSITION	34
5.3 EAR/TILT POSITION	34
5.4 TEST POSITIONS FOR BODY-WORN AND OTHER CONFIGURATIONS	35
5.5 TEST DISTANCE FOR SAR EVALUATION	36
5.6 SAR EVALUATION PROCEDURE	37
6. CONDUCTED OUTPUT POWER MEASUREMENT	38
6.2 DESCRIPTION OF TEST CONFIGURATION	39
6.3 MAXIMUM TARGET OUTPUT POWER	41
6.4 TEST RESULTS:	42
7. Standalone SAR test exclusion considerations	68
7.1 ANTENNA DISTANCE TO EDGE	68
7.2STANDALONE SAR TEST EXCLUSION CONSIDERATIONS	68
7.3SAR TEST EXCLUSION FOR THE EUT EDGE CONSIDERATIONS RESULT	69
8. SAR MEASUREMENT RESULTS	70
8.1 SAR TEST DATA	70

9. Measurement Variability	85
10. SAR SIMULTANEOUS TRANSMISSION DESCRIPTION	86
11. SAR Plots	97
APPENDIX A MEASUREMENT UNCERTAINTY	98
APPENDIX B EUT TEST POSITION PHOTOS.....	100
APPENDIX C CALIBRATION CERTIFICATES	101

DOCUMENT REVISION HISTORY

Revision Number	Report Number	Description of Revision	Date of Revision
1.0	CR230631809-20	Original Report	2023-07-18

1. GENERAL INFORMATION

1.1 Product Description for Equipment under Test (EUT)

Device Type:	Portable
Exposure Category:	Population / Uncontrolled
Antenna Type(s):	Internal Antenna
Body-Worn Accessories:	None
Proximity Sensor:	None
Carrier Aggregation:	None
Operation modes:	FDD-LTE,TDD-LTE,WLAN, Bluetooth, NFC
Frequency Band:	LTE Band 2: 1850-1910 MHz(TX); 1930-1990 MHz(RX) LTE Band 4: 1710-1755 MHz(TX); 2110-2155 MHz(RX) LTE Band 5: 824-849 MHz(TX); 869-894 MHz(RX) LTE Band 7: 2500-2570 MHz(TX); 2620-2690 MHz(RX) LTE Band 12: 699-716 MHz(TX); 729-746 MHz(RX) LTE Band 13: 777-787 MHz(TX); 746-756 MHz(RX) LTE Band 14: 788-798MHz(TX); 758-768 MHz(RX) LTE Band 17: 704-716 MHz(TX); 734-746 MHz(RX) LTE Band 25: 1850-1915 MHz(TX); 1930-1995MHz(RX) LTE Band 26: 814-849MHz(TX); 859-894MHz(RX) LTE Band 41: 2496-2690 MHz(TX); 2496-2690 MHz(RX) LTE Band 66: 1710-1780 MHz(TX); 2110-2200 MHz(RX) LTE Band 71: 663-698 MHz(TX); 617-652 MHz(RX) WLAN 2.4G : 2412MHz-2462 MHz WLAN 5.2G : 5150 MHz-5250 MHz WLAN 5.3G : 5250 MHz-5350 MHz WLAN 5.6G : 5470 MHz-5725 MHz WLAN 5.8G : 5725 MHz-5850 MHz Bluetooth : 2402MHz-2480MHz NFC: 13.56 MHz
Conducted RF Power:	LTE Band 2: 22.96dBm; LTE Band 4: 23.15dBm LTE Band 5: 23.43dBm; LTE Band 7: 22.48dBm LTE Band 12:23.32dBm;LTE Band 13: 23.54dBm LTE Band 14:19.97dBm;LTE Band 17:23.42dBm; LTE Band 25:23.03dBm;LTE Band 26:23.44dBm; LTE Band 41:22.78dBm; LTE Band 66:23.48dBm; LTE Band 71:23.47dBm; WLAN 2.4G: 17.75dBm; WLAN 5.2G: 14.85dBm WLAN 5.3G: 15.49dBm; WLAN 5.6G: 15.63dBm WLAN 5.8G: 15.66dBm Bluetooth(BDR/EDR):10.36dBm BLE: 1.25dBm
Rated Input Voltage:	DC3.8V from Rechargeable Battery
Serial Number:	26OC-1
Normal Operation:	Body Worn

Note: EUT has two types of batteries (thin and thick); After verification, the thin battery with poor results was selected (sample 1 #), thick battery (Sample 2#)test the worst mode. For detailed information on the differences between them, please refer to the declaration letter.

EUT Configuration Detail

Configuration:	Sample 1#	Sample 2#
Battery Capacity (mAh):	3600	5200
EUT Dimensions (L*W*H):	149.8mm*74mm*16.8mm	149.8mm*74mm*18.8mm
Description:	without a scanning head	without a scanning head

1.2 Test Specification, Methods and Procedures

The tests documented in this report were performed in accordance with FCC 47 CFR § 2.1093, IEEE 1528-2013, the following FCC Published RF exposure KDB procedures:

KDB 447498 D01 General RF Exposure Guidance v06
KDB 648474 D04 Handset SAR v01r03
KDB865664 D01 SAR Measurement 100 MHz to 6 GHz v01r04
KDB865664 D02 RF Exposure Reporting v01r02
KDB941225 D01 3G SAR Procedures v03r01
KDB 941225 D05 SAR for LTE Devices v02r05
KDB941225 D06 Hotspot Mode v02r01
KDB 248227 D01 802.11 Wi-Fi SAR v02r02

TCB Workshop April 2019: RF Exposure Procedures

1.3 SAR Limits**FCC Limit**

EXPOSURE LIMITS	SAR (W/kg)	
	(General Population / Uncontrolled Exposure Environment)	(Occupational / Controlled Exposure Environment)
Spatial Average (averaged over the whole body)	0.08	0.4
Spatial Peak (averaged over any 1 g of tissue)	1.60	8.0
Spatial Peak (hands/wrists/feet/ankles averaged over 10 g)	4.0	20.0

Population/Uncontrolled Environments are defined as locations where there is the exposure of individual who have no knowledge or control of their exposure.

Occupational/Controlled Environments are defined as locations where there is exposure that maybe incurred by people who are aware of the potential for exposure (i.e. as a result of employment or occupation).

General Population/Uncontrolled environments Spatial Peak limit 1.6W/kg for 1g SAR applied to the EUT.

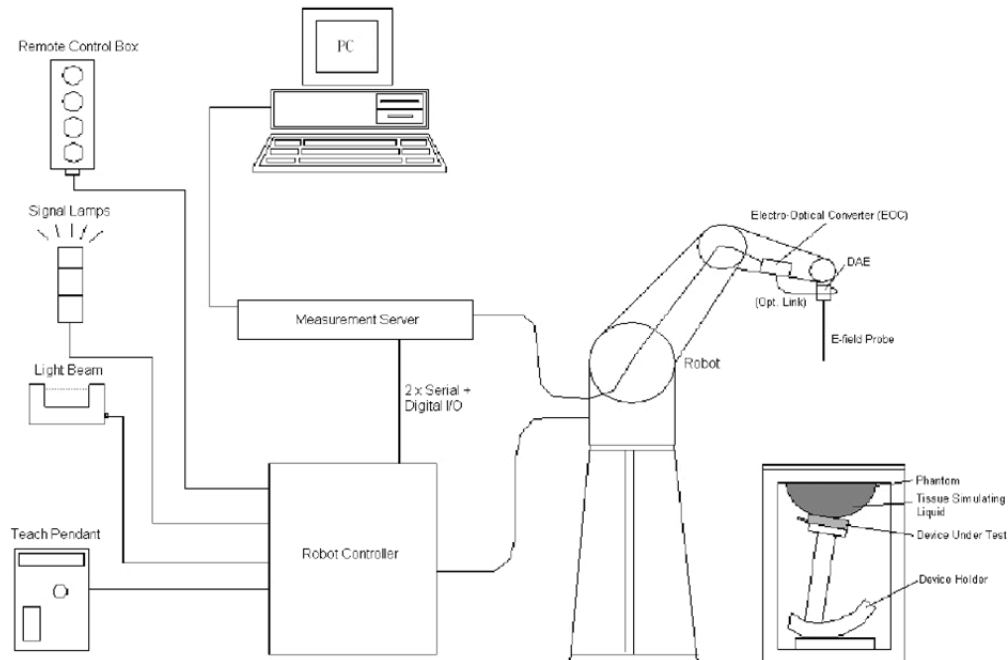
2. SAR MEASUREMENT SYSTEM

These measurements were performed with the automated near-field scanning system DASY5 from Schmid & Partner Engineering AG (SPEAG) which is the Fifth generation of the system shown in the figure hereinafter:



DASY5 System Description

The DASY5 system for performing compliance tests consists of the following items:



- A standard high precision 6-axis robot with controller, teach pendant and software. An arm extension for accommodating the data acquisition electronics (DAE).
- An isotropic field probe optimized and calibrated for the targeted measurement.
- A data acquisition electronics (DAE) which performs the signal application, signal multiplexing, AD-conversion, offset measurements, mechanical surface detection, collision detection, etc. The unit is battery powered with standard or rechargeable batteries. The signal is optically transmitted to the EOC.
- The Electro-optical converter (EOC) performs the conversion from optical to electrical signals for the digital communication to the DAE. To use optical surface detection, a special version of the EOC is required. The EOC signal is transmitted to the measurement server.
- The function of the measurement server is to perform the time critical tasks such as signal filtering, control of the robot operation and fast movement interrupts.
- The Light Beam used is for probe alignment. This improves the (absolute) accuracy of the probe positioning.
- A computer running Win7 professional operating system and the DASY52 software.
- Remote control and teach pendant as well as additional circuitry for robot safety such as warning lamps, etc.
- The phantom, the device holder and other accessories according to the targeted measurement.

DASY5 Measurement Server

The DASY5 measurement server is based on a PC/104 CPU board with a 400MHz Intel ULVCeleron, 128MB chip-disk and 128MB RAM. The necessary circuits for communication with the DAE4 (or DAE3) electronics box, as well as the 16 bit AD-converter system for optical detection and digital I/O interface are contained on the DASY5 I/O board, which is directly connected to the PC/104 bus of the CPU board.



The measurement server performs all real-time data evaluation of field measurements and surface detection, controls robot movements and handles safety operation. The PC operating system cannot interfere with these time critical processes. All connections are supervised by a watchdog, and disconnection of any of the cables to the measurement server will automatically disarm the robot and disable all program-controlled robot movements. Furthermore, the measurement server is equipped with an expansion port which is reserved for future applications. Please note that this expansion port does not have a standardized point out, and therefore only devices provided by SPEAG can be connected. Devices from any other supplier could seriously damage the measurement server.

Data Acquisition Electronics

The data acquisition electronics (DAE4) consist of a highly sensitive electrometer-grade preamplifier with auto-zeroing, a channel and gain-switching multiplexer, a fast 16 bit AD-converter and a command decoder with a control logic unit. Transmission to the measurement server is accomplished through an optical downlink for data and status information, as well as an optical uplink for commands and the clock.

The mechanical probe mounting device includes two different sensor systems for frontal and sideways probe contacts. They are used for mechanical surface detection and probe collision detection.

The input impedance of both the DAE4 as well as of the DAE3 box is 200M Ω ; the inputs are symmetrical and floating. Common mode rejection is above 80 dB.

EX3DV4 E-Field Probes

Frequency	10 MHz to > 6 GHz Linearity: ± 0.2 dB (30 MHz to 6 GHz)
Directivity	± 0.3 dB in TSL (rotation around probe axis) ± 0.5 dB in TSL (rotation normal to probe axis)
Dynamic Range	10 μ W/g to > 100 mW/g Linearity: ± 0.2 dB (noise: typically < 1 μ W/g)
Dimensions	Overall length: 337 mm (Tip: 20 mm) Tip diameter: 2.5 mm (Body: 12 mm) Typical distance from probe tip to dipole centers: 1 mm
Application	High precision dosimetric measurements in any exposure scenario (e.g., very strong gradient fields); the only probe that enables compliance testing for frequencies up to 6 GHz with precision of better 30%.
Compatibility	DASY3, DASY4, DASY52 SAR and higher, EASY4/MRI

Calibration Frequency Points for EX3DV4 E-Field Probes SN: 7522 Calibrated: 2023/5/29

Calibration Frequency Point(MHz)	Frequency Range(MHz)		Conversion Factor		
	From	To	X	Y	Z
750 Head	650	850	9.90	9.90	9.90
900 Head	850	1000	9.37	9.37	9.37
1750 Head	1650	1850	8.15	8.15	8.15
1900 Head	1850	2000	7.94	7.94	7.94
2300 Head	2200	2400	7.67	7.67	7.67
2450 Head	2400	2550	7.42	7.42	7.42
2600 Head	2550	2700	7.23	7.23	7.23
5250 Head	5140	5360	5.36	5.36	5.36
5500 Head	5390	5610	4.85	4.85	4.85
5750 Head	5640	5860	4.90	4.90	4.90

SAM Twin Phantom

The SAM twin phantom is a fiberglass shell phantom with 2mm shell thickness (except the ear region, where shell thickness increases to 6 mm). The phantom has three measurement areas:

- _ Left Head
- _ Right Head
- _ Flat phantom

The phantom table for the DASY systems based on the robots have the size of 100 x 50 x 85 cm (L xWx H). For easy dislocation these tables have fork lift cut outs at the bottom.

The bottom plate contains three pairs of bolts for locking the device holder. The device holder positions are adjusted to the standard measurement positions in the three sections. Only one device holder is necessary if two phantoms are used (e.g., for different liquids)



A white cover is provided to cover the phantom during off-periods to prevent water evaporation and changes in the liquid parameters. Free space scans of devices on top of this phantom cover are possible. Three reference marks are provided on the phantom counter. These reference marks are used to teach the absolute phantom position relative to the robot.

Robots

The DASY5 system uses the high precision industrial robot. The robot offers the same features important for our application:

- High precision (repeatability 0.02mm)
- High reliability (industrial design)
- Low maintenance costs (virtually maintenance free due to direct drive gears; no belt drives)
- Jerk-free straight movements (brushless synchrony motors; no stepper motors)
- Low ELF interference (motor control fields shielded via the closed metallic construction shields)

The above mentioned robots are controlled by the Staubli CS8c robot controllers. All information regarding the use and maintenance of the robot arm and the robot controller is contained on the CDs delivered along with the robot. Paper manuals are available upon request direct from Staubli.

SAR Scan Procedures

Step 1: Power Reference Measurement

The Power Reference Measurement and Power Drift Measurements are for monitoring the power drift of the device under test in the batch process. The minimum distance of probe sensors to surface determines the closest measurement point to phantom surface. The minimum distance of probe sensors to surface is 1.4 mm. This distance cannot be smaller than the distance of sensor calibration points to probe tip as defined in the probe properties.

Step 2: Area Scans

Area scans are defined prior to the measurement process being executed with a user defined variable spacing between each measurement point (integral) allowing low uncertainty measurements to be conducted. Scans defined for FCC applications utilize a 15mm/2 step integral, with 1.5mm interpolation used to locate the peak SAR area used for zoom scan assessments.

Where the system identifies multiple SAR peaks (which are within 25% of peak value) the system will provide the user with the option of assessing each peak location individually for zoom scan averaging.

Area Scan Parameters extracted from KDB 865664 D01 SAR Measurement 100 MHz to 6 GHz

	≤ 3 GHz	> 3 GHz
Maximum distance from closest measurement point (geometric center of probe sensors) to phantom surface	5 mm ± 1 mm	$\frac{1}{2} \cdot \delta \cdot \ln(2)$ mm ± 0.5 mm
Maximum probe angle from probe axis to phantom surface normal at the measurement location	30° ± 1°	20° ± 1°
Maximum area scan spatial resolution: Δx_{Area} , Δy_{Area}	≤ 2 GHz: ≤ 15 mm 2 – 3 GHz: ≤ 12 mm	3 – 4 GHz: ≤ 12 mm 4 – 6 GHz: ≤ 10 mm
	When the x or y dimension of the test device, in the measurement plane orientation, is smaller than the above, the measurement resolution must be ≤ the corresponding x or y dimension of the test device with at least one measurement point on the test device.	

Step 3: Zoom Scan (Cube Scan Averaging)

The averaging zoom scan volume utilized in the DASY5 software is in the shape of a cube and the side dimension of a 1 g or 10 g mass is dependent on the density of the liquid representing the simulated tissue. A density of 1000 kg/m³ is used to represent the head and body tissue density and not the phantom liquid density, in order to be consistent with the definition of the liquid dielectric properties, i.e. the side length of the 1g cube is 5mm, with the side length of the 10g cube is 21.5mm.

Zoom Scan Parameters extracted from KDB 865664 D01 SAR Measurement 100 MHz to 6 GHz

		≤ 3 GHz	> 3 GHz
Maximum zoom scan spatial resolution: $\Delta x_{\text{Zoom}}, \Delta y_{\text{Zoom}}$		≤ 2 GHz: ≤ 8 mm $2 - 3$ GHz: ≤ 5 mm*	$3 - 4$ GHz: ≤ 5 mm* $4 - 6$ GHz: ≤ 4 mm*
Maximum zoom scan spatial resolution, normal to phantom surface	uniform grid: $\Delta z_{\text{Zoom}}(n)$	≤ 5 mm	$3 - 4$ GHz: ≤ 4 mm $4 - 5$ GHz: ≤ 3 mm $5 - 6$ GHz: ≤ 2 mm
	graded grid	$\Delta z_{\text{Zoom}}(1)$: between 1 st two points closest to phantom surface	≤ 4 mm $3 - 4$ GHz: ≤ 3 mm $4 - 5$ GHz: ≤ 2.5 mm $5 - 6$ GHz: ≤ 2 mm
		$\Delta z_{\text{Zoom}}(n>1)$: between subsequent points	$\leq 1.5 \cdot \Delta z_{\text{Zoom}}(n-1)$ mm
Minimum zoom scan volume	x, y, z	≥ 30 mm	$3 - 4$ GHz: ≥ 28 mm $4 - 5$ GHz: ≥ 25 mm $5 - 6$ GHz: ≥ 22 mm
Note: δ is the penetration depth of a plane-wave at normal incidence to the tissue medium; see IEEE Std 1528-2013 for details. * When zoom scan is required and the <i>reported</i> SAR from the <i>area scan based 1-g SAR estimation</i> procedures of KDB Publication 447498 is ≤ 1.4 W/kg, ≤ 8 mm, ≤ 7 mm and ≤ 5 mm zoom scan resolution may be applied, respectively, for 2 GHz to 3 GHz, 3 GHz to 4 GHz and 4 GHz to 6 GHz.			

Step 4: Power Drift Measurement

The Power Drift Measurement measures the field at the same location as the most recent power reference measurement within the same procedure, and with the same settings. The Power Drift Measurement gives the field difference in dB from the reading conducted within the last Power Reference Measurement. This allows a user to monitor the power drift of the device under test within a batch process. The measurement procedure is the same as Step 1.

When the cube intersects with the surface of the phantom, it is oriented so that 3 vertices touch the surface of the shell or the center of a face is tangent to the surface. The face of the cube closest to the surface is modified in order to conform to the tangent surface.

The zoom scan integer steps can be user defined so as to reduce uncertainty, but normal practice for typical test applications (including FCC) utilize a physical step of 7 x 7 x 7 (5mmx5mmx5mm) providing a volume of 30 mm in the X & Y & Z axis.

Tissue Dielectric Parameters for Head and Body Phantoms

The head tissue dielectric parameters recommended by the IEC 62209-1:2016

Recommended Tissue Dielectric Parameters for Head liquid

Table A.3 – Dielectric properties of the head tissue-equivalent liquid

Frequency MHz	Relative permittivity ϵ_r	Conductivity (σ) S/m
300	45,3	0,87
450	43,5	0,87
<i>750</i>	<i>41,9</i>	<i>0,89</i>
835	41,5	0,90
900	41,5	0,97
1 450	40,5	1,20
<i>1 500</i>	<i>40,4</i>	<i>1,23</i>
<i>1 640</i>	<i>40,2</i>	<i>1,31</i>
<i>1 750</i>	<i>40,1</i>	<i>1,37</i>
1 800	40,0	1,40
1 900	40,0	1,40
2 000	40,0	1,40
<i>2 100</i>	<i>39,8</i>	<i>1,49</i>
<i>2 300</i>	<i>39,5</i>	<i>1,67</i>
2 450	39,2	1,80
<i>2 600</i>	<i>39,0</i>	<i>1,96</i>
3 000	38,5	2,40
<i>3 500</i>	<i>37,9</i>	<i>2,91</i>
<i>4 000</i>	<i>37,4</i>	<i>3,43</i>
<i>4 500</i>	<i>36,8</i>	<i>3,94</i>
<i>5 000</i>	<i>36,2</i>	<i>4,45</i>
<i>5 200</i>	<i>36,0</i>	<i>4,66</i>
<i>5 400</i>	<i>35,8</i>	<i>4,86</i>
<i>5 600</i>	<i>35,5</i>	<i>5,07</i>
<i>5 800</i>	<i>35,3</i>	<i>5,27</i>
6 000	35,1	5,48

NOTE For convenience, permittivity and conductivity values at those frequencies which are not part of the original data provided by Drossos et al. [33] or the extension to 5 800 MHz are provided (i.e. the values shown *in italics*). These values were linearly interpolated between the values in this table that are immediately above and below these values, except the values at 6 000 MHz that were linearly extrapolated from the values at 3 000 MHz and 5 800 MHz.

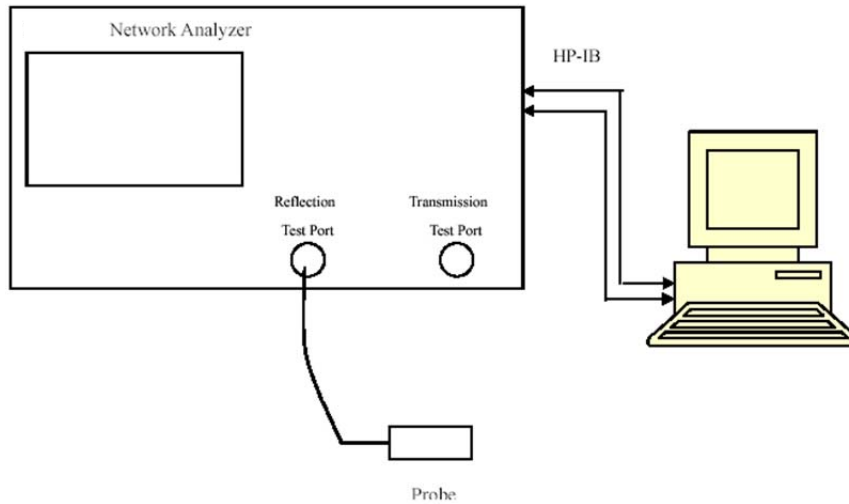
3. EQUIPMENT LIST AND CALIBRATION

3.1 Equipments List & Calibration Information

Equipment	Model	S/N	Calibration Date	Calibration Due Date
DASY5 Test Software	DASY52.8	N/A	NCR	NCR
DASY5 Measurement Server	DASY5 5.0.28	1123	NCR	NCR
Data Acquisition Electronics	DAE4	1493	2023/3/17	2024/3/16
E-Field Probe	EX3DV4	7522	2023/5/29	2024/5/28
Mounting Device	MD4HHTV5	BJPCTC0152	NCR	NCR
Twin SAM	Twin SAM V5.0	1470	NCR	NCR
Dipole, 750 MHz	D750V3	1230	2023/3/24	2026/3/23
Dipole, 1750 MHz	D1750V2	1200	2023/3/27	2026/3/26
Dipole, 1900 MHz	D1900V2	5d251	2023/3/27	2026/3/26
Dipole, 2450 MHz	D2450V2	1102	2023/3/27	2026/3/26
Dipole,2600 MHz	D2600V2	1206	2023/3/27	2026/3/26
Dipole,5GHz	D5GHzV2	1246	2022/11/1	2025/10/31
Simulated Tissue Liquid Head(500-9500 MHz)	HBBL600-10000V6	220420-2	Each Time	/
Network Analyzer	8753B	2828A00170	2022/10/24	2023/10/23
Dielectric assessment kit	1253	SM DAK 040 CA	NCR	NCR
MXG Vector Signal Generator	N5182B	MY51350144	2022/7/15	2023/7/14
Power Meter	EPM-441A/8484A	GB37481494	2022/7/15	2023/7/14
USB Wideband Power Sensor	U2021XA	MY54080015	2022/7/15	2023/7/14
Power Amplifier	ZVA-183-S+	5969001149	NCR	NCR
Directional Coupler	441493	520Z	NCR	NCR
Attenuator	20dB, 100W	LN749	NCR	NCR
Attenuator	6dB, 150W	2754	NCR	NCR
Wideband Radio Communication Tester	CMW500	149218	2022/07/15	2023/07/14
Spectrum Analyzer	FSV40	101943	2022/07/25	2023/07/24

4. SAR MEASUREMENT SYSTEM VERIFICATION

4.1 Liquid Verification



Liquid Verification Setup Block Diagram

Liquid Verification Results

Frequency (MHz)	LiquidType	Liquid Parameter		Target Value		Delta (%)		Tolerance (%)
		ϵ_r	σ (S/m)	ϵ_r	σ (S/m)	$\Delta\epsilon_r$	$\Delta\sigma$ (S/m)	
750	Simulated Tissue Liquid Head	41.974	0.876	41.9	0.89	0.18	-1.57	± 5
819	Simulated Tissue Liquid Head	41.418	0.914	41.58	0.9	-0.39	1.56	± 5
831.5	Simulated Tissue Liquid Head	41.364	0.921	41.52	0.9	-0.38	2.33	± 5
841.5	Simulated Tissue Liquid Head	41.176	0.934	41.47	0.9	-0.71	3.78	± 5

*Liquid Verification above was performed on 2023/06/14.

Frequency (MHz)	LiquidType	Liquid Parameter		Target Value		Delta (%)		Tolerance (%)
		ϵ_r	σ (S/m)	ϵ_r	σ (S/m)	$\Delta\epsilon_r$	$\Delta\sigma$ (S/m)	
673	Simulated Tissue Liquid Head	42.852	0.846	42.31	0.88	1.28	-3.86	± 5
680.5	Simulated Tissue Liquid Head	42.694	0.852	42.27	0.89	1	-4.27	± 5
688	Simulated Tissue Liquid Head	42.537	0.857	42.23	0.89	0.73	-3.71	± 5
704	Simulated Tissue Liquid Head	42.438	0.868	42.15	0.89	0.68	-2.47	± 5
707.5	Simulated Tissue Liquid Head	42.282	0.873	42.13	0.89	0.36	-1.91	± 5
711	Simulated Tissue Liquid Head	42.019	0.879	42.11	0.89	-0.22	-1.24	± 5
750	Simulated Tissue Liquid Head	41.869	0.891	41.9	0.89	-0.07	0.11	± 5

*Liquid Verification above was performed on 2023/06/18.

Frequency (MHz)	LiquidType	Liquid Parameter		Target Value		Delta (%)		Tolerance (%)
		ϵ_r	σ (S/m)	ϵ_r	σ (S/m)	$\Delta\epsilon_r$	$\Delta\sigma$ (S/m)	
750	Simulated Tissue Liquid Head	42.082	0.875	41.9	0.89	0.43	-1.69	± 5
782	Simulated Tissue Liquid Head	41.754	0.897	41.75	0.89	0.01	0.79	± 5
793	Simulated Tissue Liquid Head	41.579	0.902	41.7	0.9	-0.29	0.22	± 5

*Liquid Verification above was performed on 2023/06/20.

Frequency (MHz)	LiquidType	Liquid Parameter		Target Value		Delta (%)		Tolerance (%)
		ϵ_r	σ (S/m)	ϵ_r	σ (S/m)	$\Delta\epsilon_r$	$\Delta\sigma$ (S/m)	
1720	Simulated Tissue Liquid Head	40.303	1.317	40.13	1.35	0.43	-2.44	± 5
1745	Simulated Tissue Liquid Head	40.095	1.334	40.1	1.37	-0.01	-2.63	± 5
1750	Simulated Tissue Liquid Head	39.894	1.352	40.1	1.37	-0.51	-1.31	± 5
1770	Simulated Tissue Liquid Head	39.883	1.373	40.06	1.38	-0.44	-0.51	± 5

*Liquid Verification above was performed on 2023/06/16.

Frequency (MHz)	LiquidType	Liquid Parameter		Target Value		Delta (%)		Tolerance (%)
		ϵ_r	σ (S/m)	ϵ_r	σ (S/m)	$\Delta\epsilon_r$	$\Delta\sigma$ (S/m)	
1860	Simulated Tissue Liquid Head	40.194	1.373	40	1.4	0.49	-1.93	± 5
1882.5	Simulated Tissue Liquid Head	40.066	1.384	40	1.4	0.17	-1.14	± 5
1900	Simulated Tissue Liquid Head	39.977	1.392	40	1.4	-0.06	-0.57	± 5
1905	Simulated Tissue Liquid Head	39.896	1.403	40	1.4	-0.26	0.21	± 5

*Liquid Verification above was performed on 2023/06/25.

Frequency (MHz)	LiquidType	Liquid Parameter		Target Value		Delta (%)		Tolerance (%)
		ϵ_r	σ (S/m)	ϵ_r	σ (S/m)	$\Delta\epsilon_r$	$\Delta\sigma$ (S/m)	
2412	Simulated Tissue Liquid Head	39.443	1.787	39.28	1.77	0.41	0.96	± 5
2437	Simulated Tissue Liquid Head	39.378	1.791	39.23	1.79	0.38	0.06	± 5
2441	Simulated Tissue Liquid Head	39.343	1.798	39.22	1.79	0.31	0.45	± 5
2450	Simulated Tissue Liquid Head	39.233	1.808	39.2	1.8	0.08	0.44	± 5
2462	Simulated Tissue Liquid Head	39.186	1.821	39.18	1.81	0.02	0.61	± 5
2510	Simulated Tissue Liquid Head	38.949	1.857	39.12	1.86	-0.44	-0.16	± 5
2535	Simulated Tissue Liquid Head	38.917	1.878	39.09	1.89	-0.44	-0.63	± 5
2545	Simulated Tissue Liquid Head	38.906	1.882	39.07	1.9	-0.42	-0.95	± 5

*Liquid Verification above was performed on 2023/06/17.

Frequency (MHz)	LiquidType	Liquid Parameter		Target Value		Delta (%)		Tolerance (%)
		ϵ_r	σ (S/m)	ϵ_r	σ (S/m)	$\Delta\epsilon_r$	$\Delta\sigma$ (S/m)	
2560	Simulated Tissue Liquid Head	38.821	1.911	39.05	1.92	-0.59	-0.47	± 5
2549.5	Simulated Tissue Liquid Head	38.797	1.925	39.07	1.91	-0.7	0.79	± 5
2593	Simulated Tissue Liquid Head	38.743	1.945	39.01	1.95	-0.68	-0.26	± 5
2600	Simulated Tissue Liquid Head	38.712	1.954	39	1.96	-0.74	-0.31	± 5
2636.5	Simulated Tissue Liquid Head	38.568	2.025	38.95	2	-0.98	1.25	± 5
2680	Simulated Tissue Liquid Head	38.427	2.076	38.9	2.05	-1.22	1.27	± 5

*Liquid Verification above was performed on 2023/06/18.

Frequency (MHz)	LiquidType	Liquid Parameter		Target Value		Delta (%)		Tolerance (%)
		ϵ_r	σ (S/m)	ϵ_r	σ (S/m)	$\Delta\epsilon_r$	$\Delta\sigma$ (S/m)	
5180	Simulated Tissue Liquid Head	36.836	4.781	36	4.64	2.32	3.04	± 5
5200	Simulated Tissue Liquid Head	36.695	4.801	35.98	4.66	1.99	3.03	± 5
5240	Simulated Tissue Liquid Head	36.428	4.818	35.96	4.7	1.3	2.51	± 5
5250	Simulated Tissue Liquid Head	36.066	4.832	35.95	4.71	0.32	2.59	± 5
5260	Simulated Tissue Liquid Head	35.963	4.843	35.94	4.72	0.06	2.61	± 5
5280	Simulated Tissue Liquid Head	35.885	4.857	35.92	4.74	-0.1	2.47	± 5
5320	Simulated Tissue Liquid Head	35.815	4.888	35.88	4.78	-0.18	2.26	± 5
5500	Simulated Tissue Liquid Head	35.798	4.897	35.65	4.97	0.42	-1.47	± 5
5580	Simulated Tissue Liquid Head	35.613	4.943	35.53	5.05	0.23	-2.12	± 5
5600	Simulated Tissue Liquid Head	35.474	5.007	35.5	5.07	-0.07	-1.24	± 5
5700	Simulated Tissue Liquid Head	35.374	5.021	35.4	5.17	-0.07	-2.88	± 5
5745	Simulated Tissue Liquid Head	35.259	5.036	35.36	5.22	-0.29	-3.52	± 5
5750	Simulated Tissue Liquid Head	34.769	5.129	35.35	5.22	-1.64	-1.74	± 5
5785	Simulated Tissue Liquid Head	34.664	5.256	35.32	5.26	-1.86	-0.08	± 5
5825	Simulated Tissue Liquid Head	34.645	5.396	35.28	5.3	-1.8	1.81	± 5

*Liquid Verification above was performed on 2023/06/19.

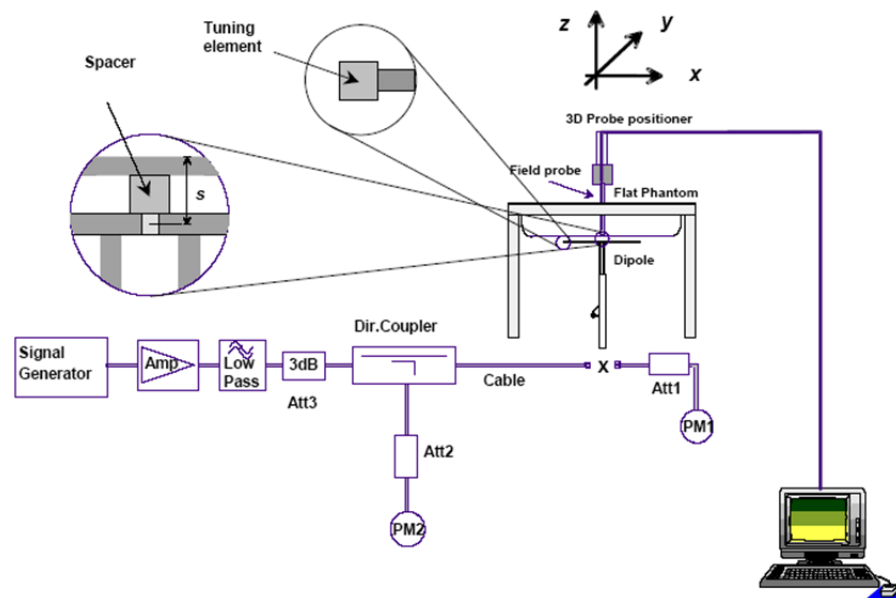
4.2 System Accuracy Verification

Prior to the assessment, the system validation kit was used to test whether the system was operating within its specifications of $\pm 10\%$. The validation results are tabulated below. And also the corresponding SAR plot is attached as well in the SAR plots files.

The spacing distances in the **System Verification Setup Block Diagram** is given by the following:

- $s = 15 \text{ mm} \pm 0,2 \text{ mm}$ for $300 \text{ MHz} \leq f \leq 1\,000 \text{ MHz}$;
- $s = 10 \text{ mm} \pm 0,2 \text{ mm}$ for $1\,000 \text{ MHz} < f \leq 3\,000 \text{ MHz}$;
- $s = 10 \text{ mm} \pm 0,2 \text{ mm}$ for $3\,000 \text{ MHz} < f \leq 6\,000 \text{ MHz}$.

System Verification Setup Block Diagram



System Accuracy Check Results

Date	Frequency Band	Liquid Type	Input Power (mW)	Measured SAR (W/kg)	Normalized to 1W (W/kg)	Target Value (W/kg)	Delta (%)	Tolerance (%)
2023/06/14	750	Simulated Tissue Liquid Head	100	1g 0.837	8.37	8.49	-1.41	± 10
2023/06/18	750	Simulated Tissue Liquid Head	100	1g 0.863	8.63	8.49	1.65	± 10
2023/06/20	750	Simulated Tissue Liquid Head	100	1g 0.875	8.75	8.49	3.06	± 10
2023/06/16	1750	Simulated Tissue Liquid Head	100	1g 3.71	37.1	35.8	3.63	± 10
2023/06/25	1900	Simulated Tissue Liquid Head	100	1g 3.99	39.9	38.9	2.57	± 10
2023/06/17	2450	Simulated Tissue Liquid Head	100	1g 4.95	49.5	50.9	-2.75	± 10
2023/06/18	2600	Simulated Tissue Liquid Head	100	1g 5.42	54.2	56	-3.21	± 10
2023/06/19	5250	Simulated Tissue Liquid Head	100	1g 7.54	75.4	77.5	-2.71	± 10
2023/06/19	5600	Simulated Tissue Liquid Head	100	1g 8.33	83.3	80.7	3.22	± 10
2023/06/19	5750	Simulated Tissue Liquid Head	100	1g 8.13	81.3	78.4	3.7	± 10

*The SAR values above are normalized to 1 Watt forward power.

4.3 SAR SYSTEM VALIDATION DATA

System Performance 750 MHz was performed on 2023/06/14

DUT: D750V3; Type: 750 MHz; Serial: 1230

Communication System: CW; Frequency: 750 MHz; Duty Cycle: 1:1

Medium parameters used: $f = 750$ MHz; $\sigma = 0.876$ S/m; $\epsilon_r = 41.974$; $\rho = 1000$ kg/m³

Phantom section: Flat Section

DASY5 Configuration:

- Probe: EX3DV4 - SN7522; ConvF(9.9, 9.9, 9.9) @ 750 MHz; Calibrated: 2023/5/29
- Sensor-Surface: 1.4mm (Mechanical Surface Detection)
- Electronics: DAE4 Sn1493; Calibrated: 2023/3/17
- Phantom: Twin SAM V5.0; Type: QD000P40CD; Serial: TP:1470
- Measurement SW: DASY52, Version 52.8 (7); SEMCAD X Version 14.6.12 (7470)

Area Scan (7x15x1): Measurement grid: dx=15mm, dy=15mm

Maximum value of SAR (measured) = 1.05 W/kg

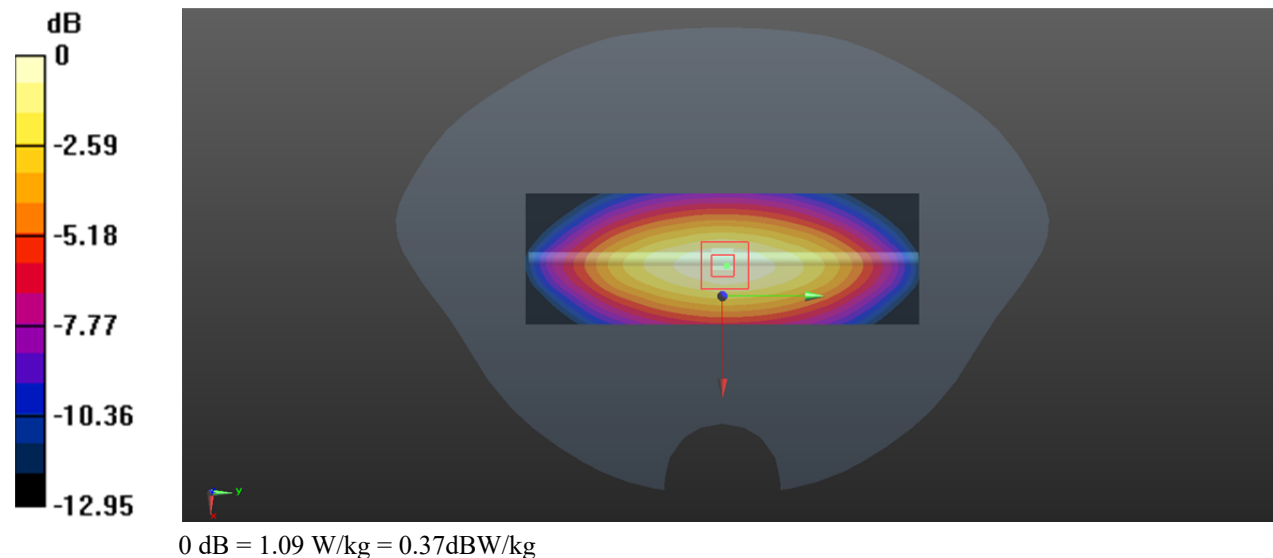
Zoom Scan (5x5x7)/Cube 0: Measurement grid: dx=8mm, dy=8mm, dz=5mm

Reference Value = 34.86 V/m; Power Drift = 0.12 dB

Peak SAR (extrapolated) = 1.08 W/kg

SAR(1 g) = 0.837 W/kg; SAR(10 g) = 0.547 W/kg

Maximum value of SAR (measured) = 1.09 W/kg



System Performance 750MHz was performed on 2023/06/18**DUT: D750V3; Type: D750MHz; Serial: SN:1230**

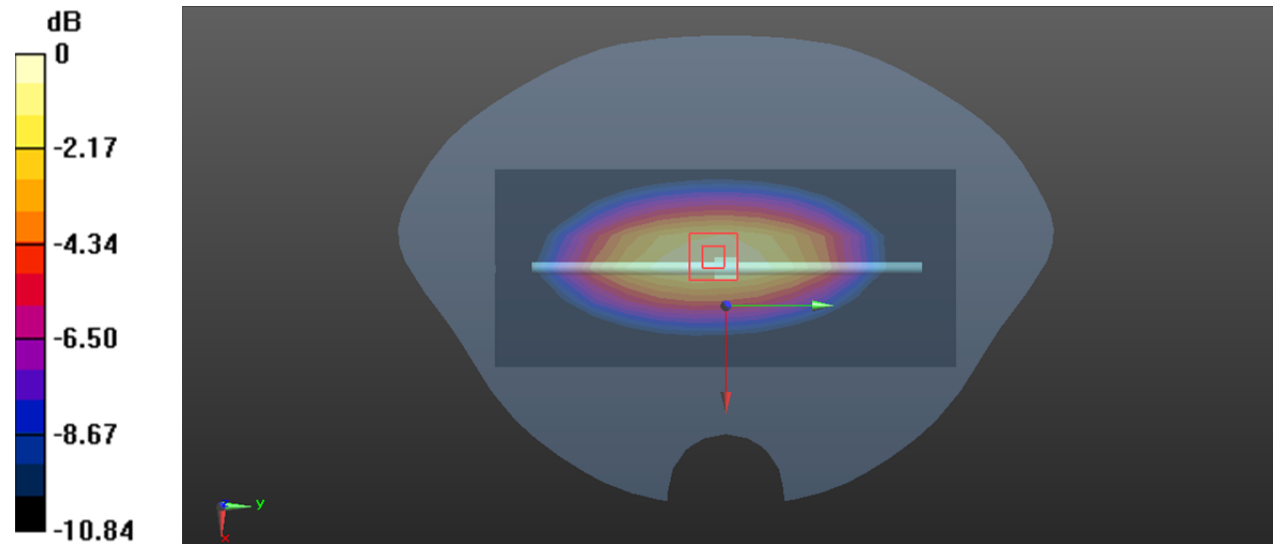
Communication System: CW (0); Frequency: 750 MHz; Duty Cycle: 1:1
Medium parameters used: $f = 750$ MHz; $\sigma = 0.891$ S/m; $\epsilon_r = 41.869$; $\rho = 1000$ kg/m³
Phantom section: Flat Section

DASY5 Configuration:

- Probe: EX3DV4 - SN7522; ConvF(9.9, 9.9, 9.9) @ 750 MHz; Calibrated: 2023/5/29
- Sensor-Surface: 1.4mm (Mechanical Surface Detection)
- Electronics: DAE4 Sn1493; Calibrated: 2023/3/17
- Phantom: Twin SAM V5.0; Type: QD000P40CD; Serial: TP:1470
- Measurement SW: DASY52, Version 52.8 (7); SEMCAD X Version 14.6.12 (7470)

Area Scan (7x15x1): Measurement grid: dx=15mm, dy=15mm
Maximum value of SAR (measured) = 1.07 W/kg

Zoom Scan (5x5x7)/Cube 0: Measurement grid: dx=8mm, dy=8mm, dz=5mm
Reference Value = 30.41 V/m; Power Drift = 0.04 dB
Peak SAR (extrapolated) = 1.39 W/kg
SAR(1 g) = 0.863 W/kg; SAR(10 g) = 0.557 W/kg
Maximum value of SAR (measured) = 1.19 W/kg



0 dB = 1.19 W/kg = 0.76 dBW/kg

System Performance 750MHz was performed on 2023/06/20**DUT: D750V3; Type: D750MHz; Serial: SN:1230**

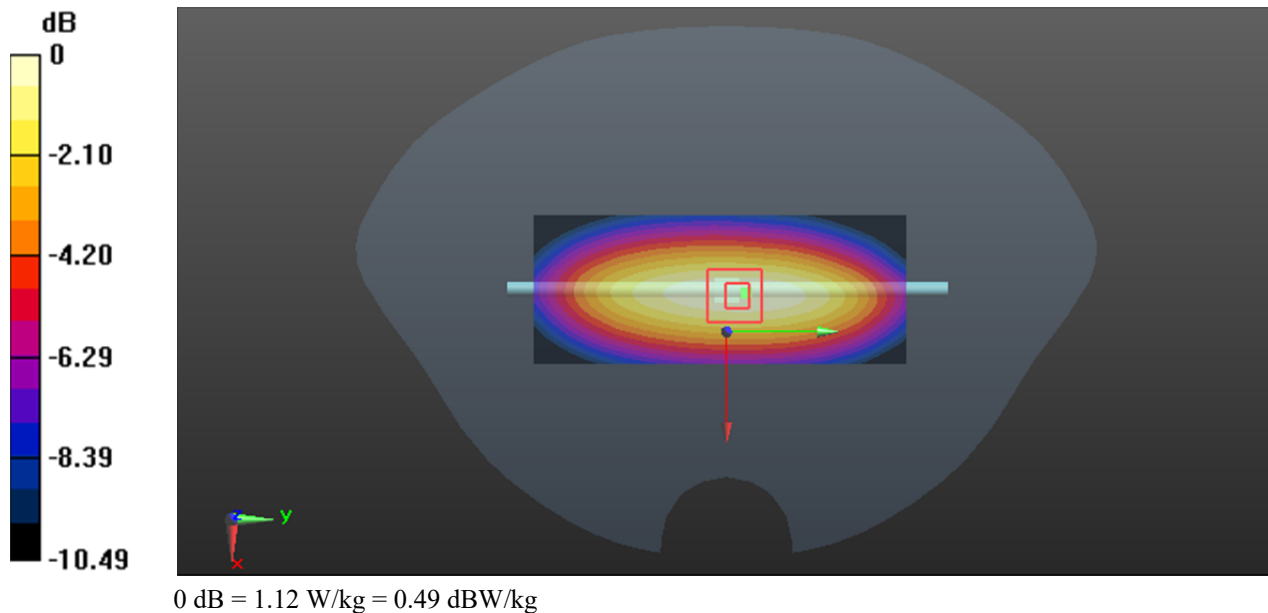
Communication System: CW (0); Frequency: 750 MHz; Duty Cycle: 1:1
Medium parameters used: $f = 750$ MHz; $\sigma = 0.875$ S/m; $\epsilon_r = 42.082$; $\rho = 1000$ kg/m³
Phantom section: Flat Section

DASY5 Configuration:

- Probe: EX3DV4 - SN7522; ConvF(9.9, 9.9, 9.9) @ 750 MHz; Calibrated: 2023/5/29
- Sensor-Surface: 1.4mm (Mechanical Surface Detection)
- Electronics: DAE4 Sn1493; Calibrated: 2023/3/17
- Phantom: Twin SAM V5.0; Type: QD000P40CD; Serial: TP:1470
- Measurement SW: DASY52, Version 52.8 (7); SEMCAD X Version 14.6.12 (7470)

Area Scan (7x15x1): Measurement grid: dx=15mm, dy=15mm
Maximum value of SAR (measured) = 1.13 W/kg

Zoom Scan (5x5x7)/Cube 0: Measurement grid: dx=8mm, dy=8mm, dz=5mm
Reference Value = 30.85 V/m; Power Drift = 0.03 dB
Peak SAR (extrapolated) = 1.39 W/kg
SAR(1 g) = 0.875 W/kg; SAR(10 g) = 0.563 W/kg
Maximum value of SAR (measured) = 1.12 W/kg



System Performance 1750MHz**DUT: D1750V2; Type: 1750MHz; Serial: SN:1200**

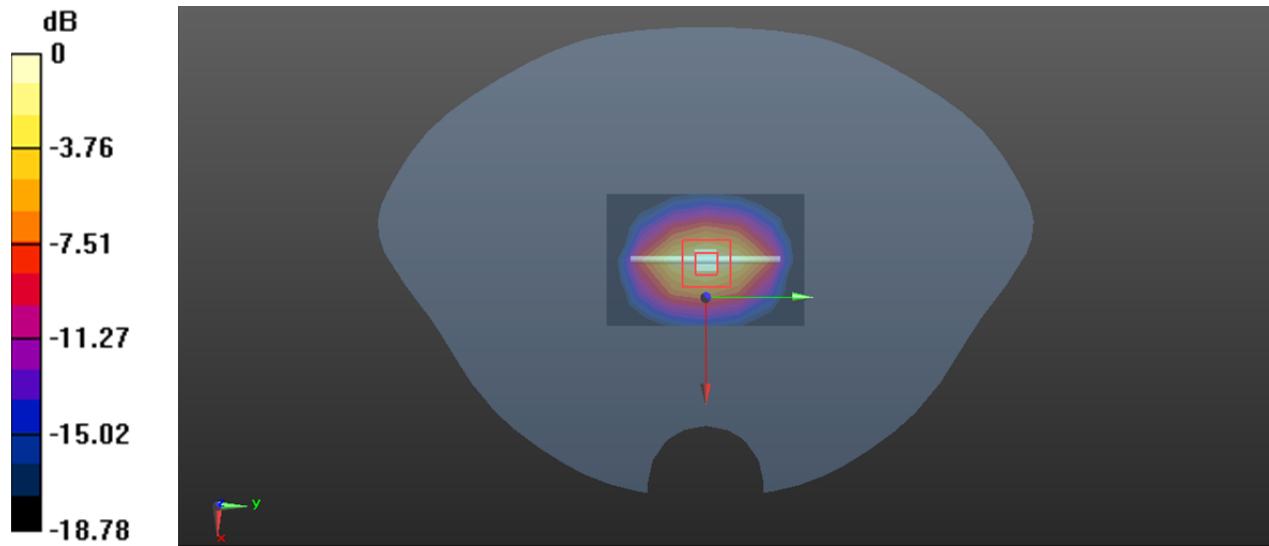
Communication System: CW (0); Frequency: 1750 MHz;Duty Cycle: 1:1
Medium parameters used: $f = 1750$ MHz; $\sigma = 1.352$ S/m; $\epsilon_r = 39.894$; $\rho = 1000$ kg/m³
Phantom section: Flat Section

DASY5 Configuration:

- Probe: EX3DV4 - SN7522; ConvF(8.15, 8.15, 8.15) @ 1750 MHz; Calibrated: 2023/5/29
- Sensor-Surface: 1.4mm (Mechanical Surface Detection)
- Electronics: DAE4 Sn1493; Calibrated: 2023/3/17
- Phantom: Twin SAM V5.0; Type: QD000P40CD; Serial: TP:1470
- Measurement SW: DASY52, Version 52.8 (7); SEMCAD X Version 14.6.12 (7470)

Area Scan (7x5x1): Measurement grid: dx=15mm, dy=15mm
Maximum value of SAR (measured) = 6.14 W/kg

Zoom Scan (5x5x7)/Cube 0: Measurement grid: dx=8mm, dy=8mm, dz=5mm
Reference Value = 62.91 V/m; Power Drift = -0.02 dB
Peak SAR (extrapolated) = 6.64 W/kg
SAR(1 g) = 3.71 W/kg; SAR(10 g) = 1.96 W/kg
Maximum value of SAR (measured) = 6.17 W/kg



System Performance 1900MHz**DUT: D1900V2; Type: 1900 MHz; Serial: 5d251**

Communication System: CW; Frequency: 1900 MHz; Duty Cycle: 1:1

Medium parameters used: $f = 1900$ MHz; $\sigma = 1.392$ S/m; $\epsilon_r = 39.977$; $\rho = 1000$ kg/m³

Phantom section: Flat Section

DASY5 Configuration:

- Probe: EX3DV4 - SN7522; ConvF(7.94, 7.94, 7.94) @ 1900 MHz; Calibrated: 2023/5/29
- Sensor-Surface: 1.4mm (Mechanical Surface Detection)
- Electronics: DAE4 Sn1493; Calibrated: 2023/3/17
- Phantom: Twin SAM V5.0; Type: QD000P40CC; Serial: TP: 1470
- Measurement SW: DASY52, Version 52.8 (7); SEMCAD X Version 14.6.12 (7470)

Area Scan (6x8x1): Measurement grid: dx=15mm, dy=15mm

Maximum value of SAR (measured) = 6.15 W/kg

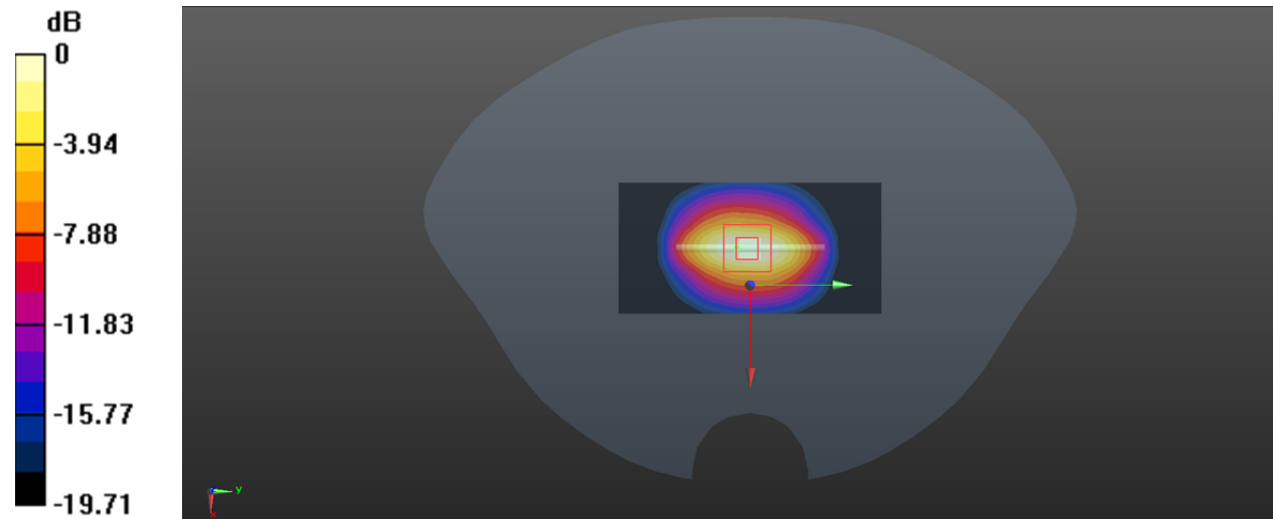
Zoom Scan (5x5x7)/Cube 0: Measurement grid: dx=8mm, dy=8mm, dz=5mm

Reference Value = 49.68 V/m; Power Drift = 0.01 dB

Peak SAR (extrapolated) = 7.94 W/kg

SAR(1 g) = 3.99 W/kg; SAR(10 g) = 2.07 W/kg

Maximum value of SAR (measured) = 6.23 W/kg



0 dB = 6.23 W/kg = 7.94dBW/kg

System Performance 2450MHz**DUT: D2450V2; Type: 2450 MHz; Serial: 1102**

Communication System: CW; Frequency: 2450 MHz; Duty Cycle: 1:1

Medium parameters used: $f = 2450$ MHz; $\sigma = 1.808$ S/m; $\epsilon_r = 39.233$; $\rho = 1000$ kg/m³

Phantom section: Flat Section

DASY5 Configuration:

- Probe: EX3DV4 - SN7522; ConvF(7.42, 7.42, 7.42) @ 2450 MHz; Calibrated: 2023/5/29
- Sensor-Surface: 1.4mm (Mechanical Surface Detection)
- Electronics: DAE4 Sn1493; Calibrated: 2023/3/17
- Phantom: Twin SAM V5.0; Type: QD000P40CD; Serial: TP:1470
- Measurement SW: DASY52, Version 52.8 (7); SEMCAD X Version 14.6.12 (7470)

Area Scan (6x7x1): Measurement grid: dx=12mm, dy=12mm

Maximum value of SAR (measured) = 5.66 W/kg

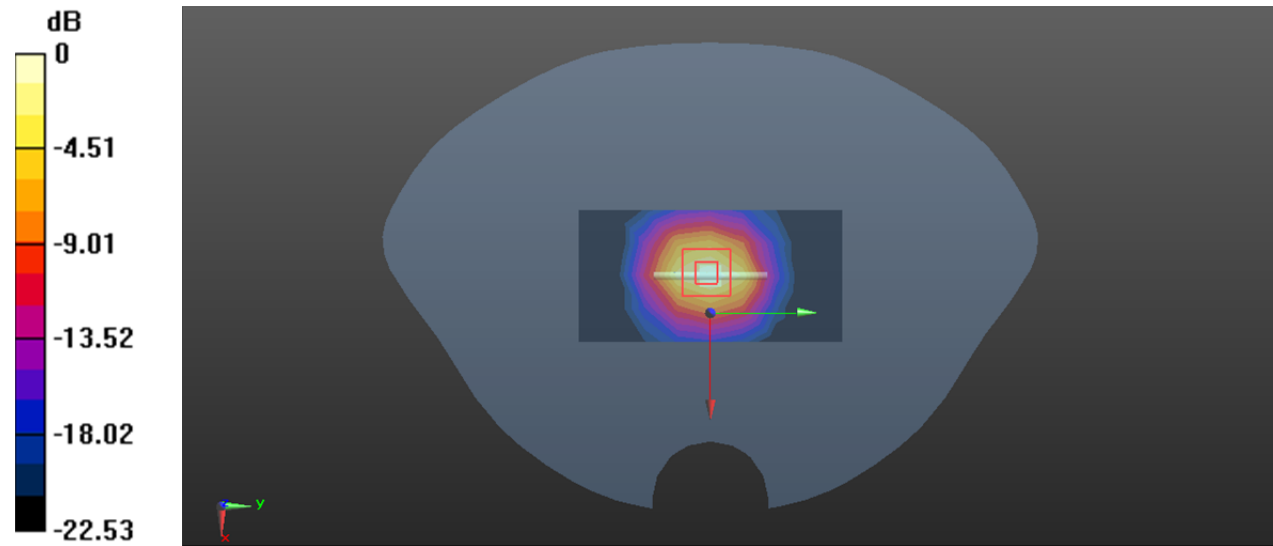
Zoom Scan (5x5x7)/Cube 0: Measurement grid: dx=8mm, dy=8mm, dz=5mm

Reference Value = 56.65 V/m; Power Drift = -0.17 dB

Peak SAR (extrapolated) = 10.6 W/kg

SAR(1 g) = 4.95 W/kg; SAR(10 g) = 2.27 W/kg

Maximum value of SAR (measured) = 5.47 W/kg



System Performance 2600MHz**DUT: D2600V2; Type: 2600MHz; Serial: SN:1206**

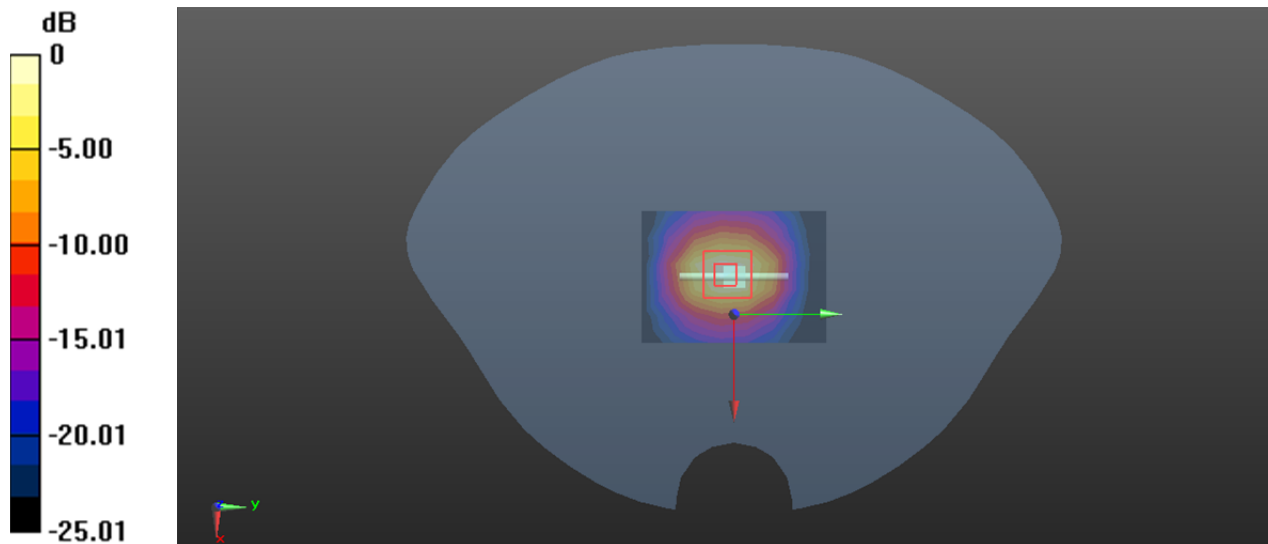
Communication System: CW (0); Frequency: 2600 MHz; Duty Cycle: 1:1
Medium parameters used: $f = 2600$ MHz; $\sigma = 1.954$ S/m; $\epsilon_r = 38.712$; $\rho = 1000$ kg/m³
Phantom section: Flat Section

DASY5 Configuration:

- Probe: EX3DV4 - SN7522; ConvF(7.23, 7.23, 7.23) @ 2600 MHz; Calibrated: 2023/5/29
- Sensor-Surface: 1.4mm (Mechanical Surface Detection)
- Electronics: DAE4 Sn1493; Calibrated: 2023/3/17
- Phantom: Twin SAM V5.0; Type: QD000P40CD; Serial: TP:1470
- Measurement SW: DASY52, Version 52.10 (2); SEMCAD X Version 14.6.12 (7470)

Area Scan (8x6x1): Measurement grid: dx=12mm, dy=12mm
Maximum value of SAR (measured) = 7.63 W/kg

Zoom Scan (5x5x7)/Cube 0: Measurement grid: dx=8mm, dy=8mm, dz=5mm
Reference Value = 69.73 V/m; Power Drift = -0.01 dB
Peak SAR (extrapolated) = 11.4 W/kg
SAR(1 g) = 5.42 W/kg; SAR(10 g) = 2.44 W/kg
Maximum value of SAR (measured) = 9.04 W/kg



0 dB = 9.04 W/kg = 9.56 dBW/kg

System Performance 5250 MHz**DUT: Dipole D5GHzV2; Type: 5250 MHz; Serial: SN:1246**

Communication System: CW; Frequency: 5250 MHz; Duty Cycle: 1:1

Medium parameters used: $f = 5250$ MHz; $\sigma = 4.832$ S/m; $\epsilon_r = 36.066$; $\rho = 1000$ kg/m³

Phantom section: Flat Section

DASY5 Configuration:

- Probe: EX3DV4 - SN7522; ConvF(5.36, 5.36, 5.36) @ 5250 MHz; Calibrated: 2023/5/29
- Sensor-Surface: 1.4mm (Mechanical Surface Detection)
- Electronics: DAE4 Sn1493; Calibrated: 2023/3/17
- Phantom: Twin SAM V5.0; Type: QD000P40CD; Serial: TP:1470
- Measurement SW: DASY52, Version 52.8 (7); SEMCAD X Version 14.6.12 (7470)

Area Scan (5x7x1): Measurement grid: dx=10mm, dy=10mm

Maximum value of SAR (measured) = 19.5 W/kg

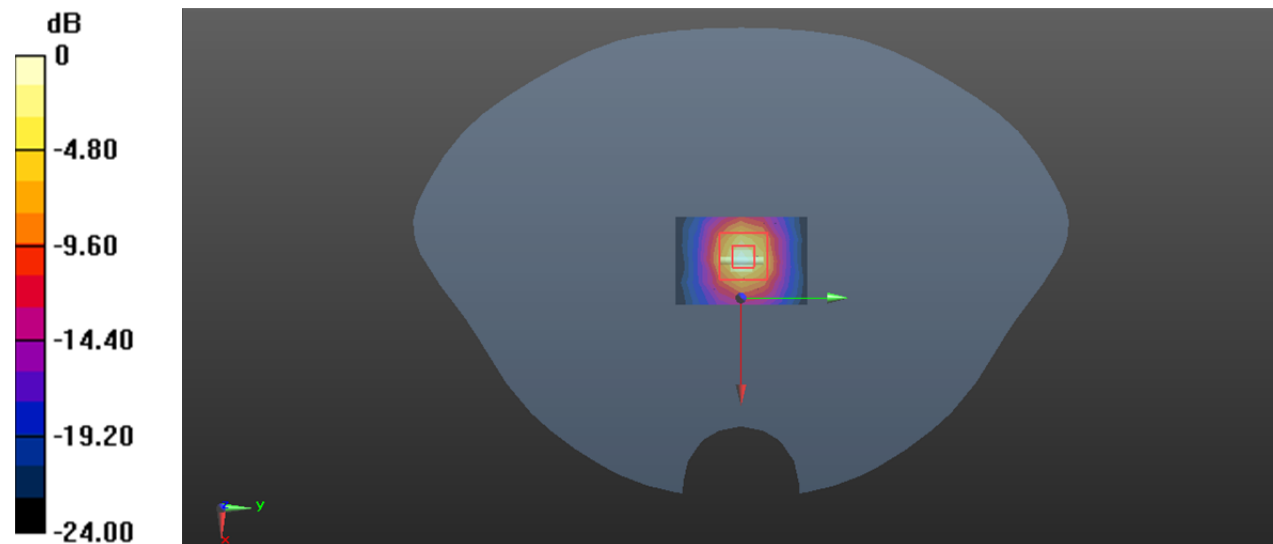
Zoom Scan (7x7x6)/Cube 0: Measurement grid: dx=5mm, dy=5mm, dz=2mm

Reference Value = 39.01 V/m; Power Drift = -0.15 dB

Peak SAR (extrapolated) = 35.7 W/kg

SAR(1 g) = 7.54 W/kg; SAR(10 g) = 2.14 W/kg

Maximum value of SAR (measured) = 20.2 W/kg



0 dB = 20.2 W/kg = 13.05 dBW/kg

System Performance 5600 MHz**DUT: D5GHzV2; Type: 5600 MHz; Serial: 1246**

Communication System: CW; Frequency: 5600 MHz; Duty Cycle: 1:1

Medium parameters used: $f = 5600$ MHz; $\sigma = 5.007$ S/m; $\epsilon_r = 35.474$; $\rho = 1000$ kg/m³

Phantom section: Flat Section

DASY5 Configuration:

- Probe: EX3DV4 - SN7329; ConvF(4.9, 4.9, 4.9) @ 5600 MHz; Calibrated: 2023/1/3
- Sensor-Surface: 1.4mm (Mechanical Surface Detection)
- Electronics: DAE4 Sn1493; Calibrated: 2023/3/17
- Phantom: Twin SAM V5.0; Type: QD000P40CD; Serial: TP:1470
- Measurement SW: DASY52, Version 52.8 (7); SEMCAD X Version 14.6.12 (7470)

Area Scan (8x8x1): Measurement grid: dx=10 mm, dy=10 mm

Maximum value of SAR (measured) = 18.2 W/kg

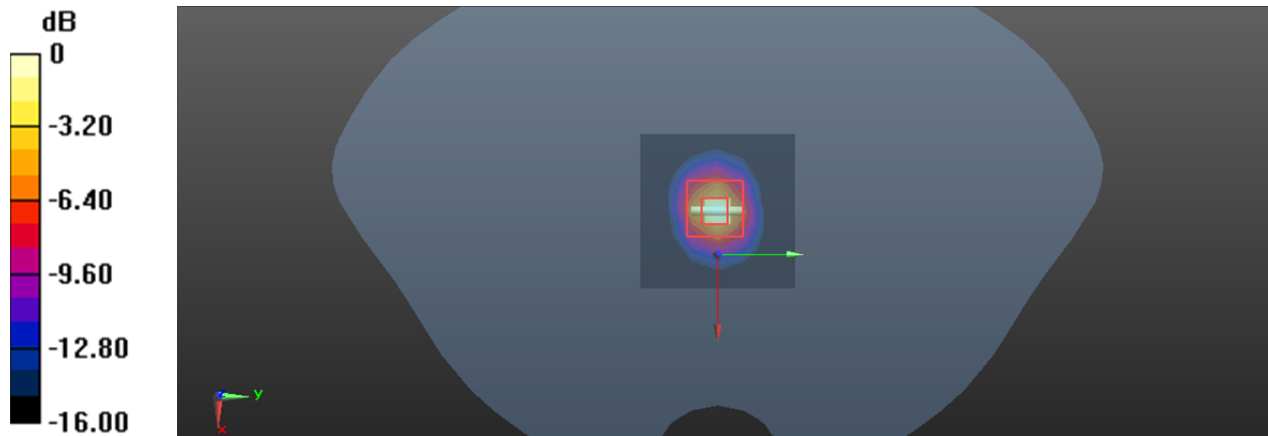
Zoom Scan (7x7x16)/Cube 0: Measurement grid: dx=4mm, dy=4mm, dz=2mm

Reference Value = 41.98 V/m; Power Drift = -0.09 dB

Peak SAR (extrapolated) = 31.2 W/kg

SAR(1 g) = 8.33 W/kg; SAR(10 g) = 2.43 W/kg

Maximum value of SAR (measured) = 18.3 W/kg



0 dB = 18.3 W/kg = 12.62dBW/kg

System Performance 5750 MHz**DUT: D5GHzV2; Type: 5750 MHz; Serial: 1246**

Communication System: CW; Frequency: 5750 MHz; Duty Cycle: 1:1

Medium parameters used: $f = 5750$ MHz; $\sigma = 5.129$ S/m; $\epsilon_r = 34.769$; $\rho = 1000$ kg/m³

Phantom section: Flat Section

DASY5 Configuration:

- Probe: EX3DV4 - SN7522; ConvF(4.9, 4.9, 4.9) @ 5750 MHz; Calibrated: 2023/5/29
- Sensor-Surface: 1.4mm (Mechanical Surface Detection)
- Electronics: DAE4 Sn1493; Calibrated: 2023/3/17
- Phantom: Twin SAM V5.0; Type: QD000P40CD; Serial: TP:1470
- Measurement SW: DASY52, Version 52.8 (7); SEMCAD X Version 14.6.12 (7470)

Area Scan (5x7x1): Measurement grid: dx=10mm, dy=10mm

Maximum value of SAR (measured) = 16.0 W/kg

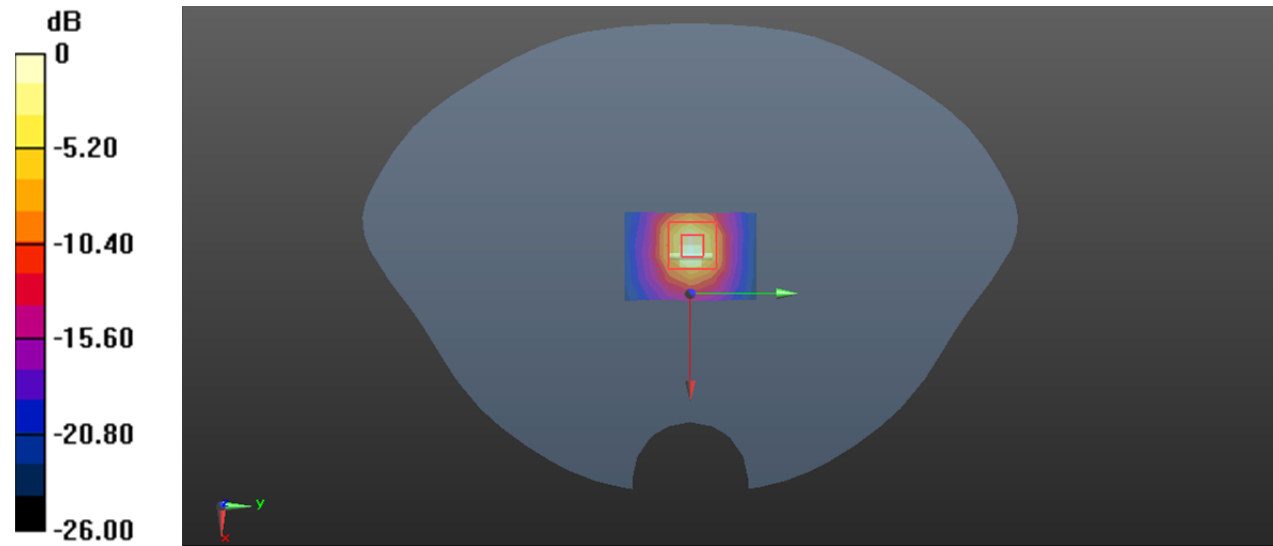
Zoom Scan (7x7x6)/Cube 0: Measurement grid: dx=5mm, dy=5mm, dz=2mm

Reference Value = 40.40 V/m; Power Drift = 0.11 dB

Peak SAR (extrapolated) = 31.7 W/kg

SAR(1 g) = 8.13 W/kg; SAR(10 g) = 2.35 W/kg

Maximum value of SAR (measured) = 20.2 W/kg



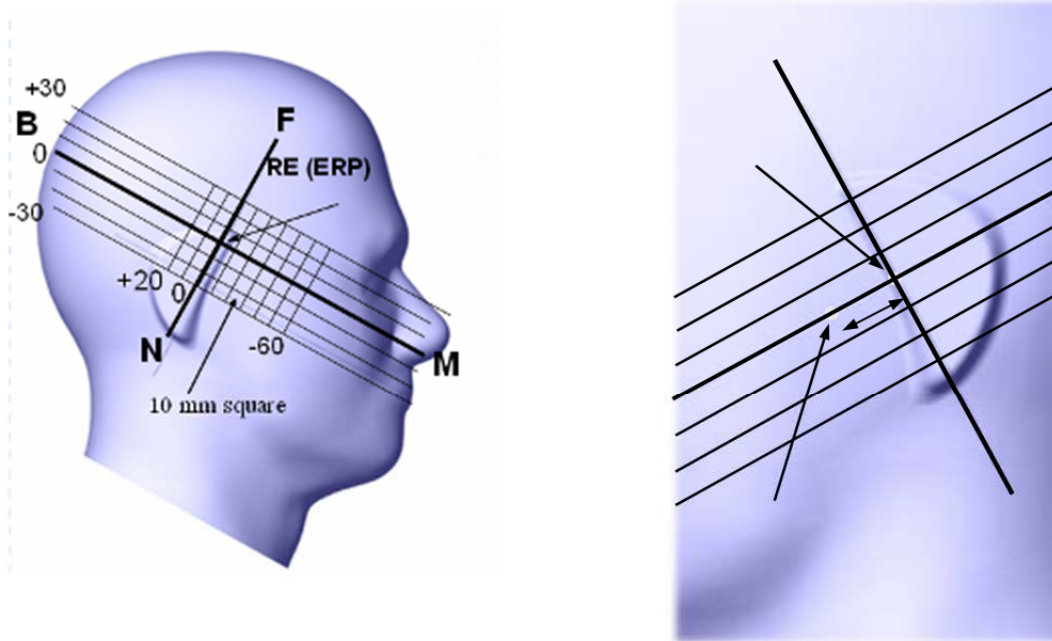
0 dB = 20.2 W/kg = 13.05 dBW/kg

5. EUT TEST STRATEGY AND METHODOLOGY

5.1 Test Positions for Device Operating Next to a Person's Ear

This category includes most wireless handsets with fixed, retractable or internal antennas located toward the top half of the device, with or without a foldout, sliding or similar keypad cover. The handset should have its earpiece located within the upper ¼ of the device, either along the centerline or off-centered, as perceived by its users. This type of handset should be positioned in a normal operating position with the “test device reference point” located along the “vertical centerline” on the front of the device aligned to the “ear reference point”. The “test device reference point” should be located at the same level as the center of the earpiece region. The “vertical centerline” should bisect the front surface of the handset at its top and bottom edges. A “ear reference point” is located on the outer surface of the head phantom on each ear spacer. It is located 1.5 cm above the center of the ear canal entrance in the “phantom reference plane” defined by the three lines joining the center of each “ear reference point” (left and right) and the tip of the mouth.

A handset should be initially positioned with the earpiece region pressed against the ear spacer of a head phantom. For the SCC-34/SC-2 head phantom, the device should be positioned parallel to the “N-F” line defined along the base of the ear spacer that contains the “ear reference point”. For interim head phantoms, the device should be positioned parallel to the cheek for maximum RF energy coupling. The “test device reference point” is aligned to the “ear reference point” on the head phantom and the “vertical centerline” is aligned to the “phantom reference plane”. This is called the “initial ear position”. While maintaining these three alignments, the body of the handset is gradually adjusted to each of the following positions for evaluating SAR:



5.2 Cheek/Touch Position

The device is brought toward the mouth of the head phantom by pivoting against the “ear reference point” or along the “N-F” line for the SCC-34/SC-2 head phantom.

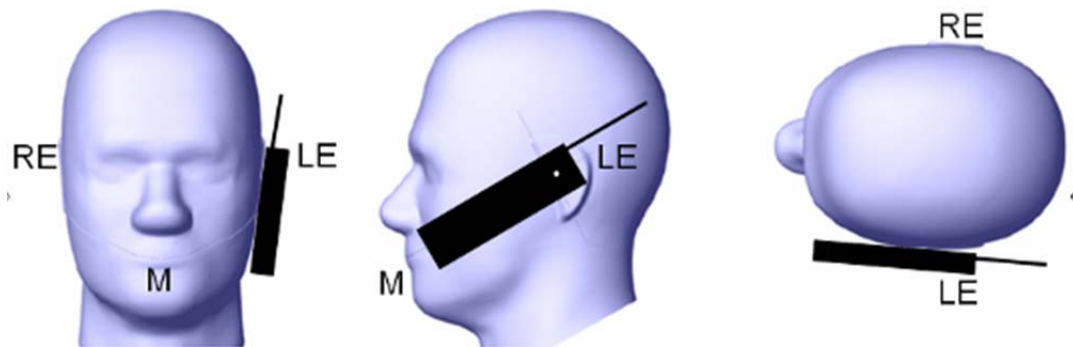
This test position is established:

When any point on the display, keypad or mouthpiece portions of the handset is in contact with the phantom.

(or) When any portion of a foldout, sliding or similar keypad cover opened to its intended self-adjusting normal use position is in contact with the cheek or mouth of the phantom.

For existing head phantoms – when the handset loses contact with the phantom at the pivoting point, rotation should continue until the device touches the cheek of the phantom or breaks its last contact from the ear spacer.

Cheek /Touch Position



5.3 Ear/Tilt Position

With the handset aligned in the “Cheek/Touch Position”:

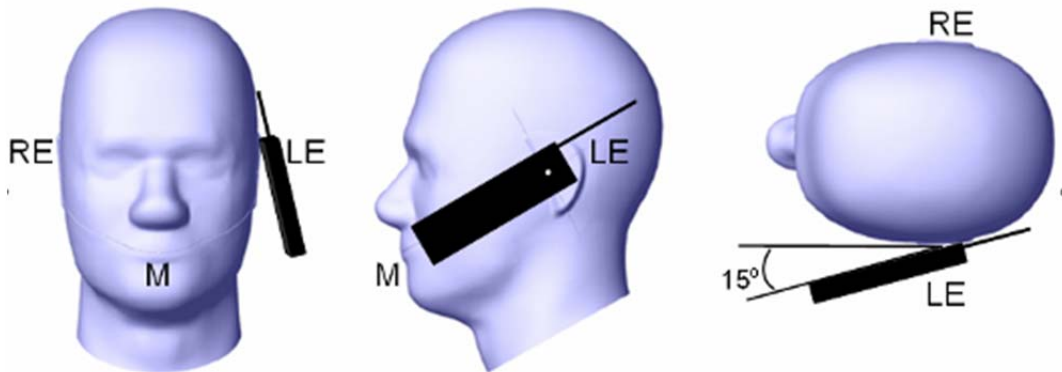
1) If the earpiece of the handset is not in full contact with the phantom’s ear spacer (in the “Cheek/Touch position”) and the peak SAR location for the “Cheek/Touch” position is located at the ear spacer region or corresponds to the earpiece region of the handset, the device should be returned to the “initial ear position” by rotating it away from the mouth until the earpiece is in full contact with the ear spacer.

2) (otherwise) The handset should be moved (translated) away from the cheek perpendicular to the line passes through both “ear reference points” (note: one of these ear reference points may not physically exist on a split head model) for approximate 2-3 cm. While it is in this position, the device handset is tilted away from the mouth with respect to the “test device reference point” until the inside angle between the vertical centerline on the front surface of the phone and the horizontal line passing through the ear reference point is by 15° to 80° . After the tilt, it is then moved (translated) back toward the head perpendicular to the line passes through both “ear reference points” until the device touches the phantom or the ear spacer. If the antenna touches the head first, the positioning process should be repeated with a tilt angle less than 15° so that the device and its antenna would touch the phantom simultaneously. This test position may require a device holder or positioner to achieve the translation and tilting with acceptable positioning repeatability.

If a device is also designed to transmit with its keypad cover closed for operating in the head position, such positions should also be considered in the SAR evaluation. The device should be tested on the left and right side of the head phantom in the “Cheek/Touch” and “Ear/Tilt” positions. When applicable, each configuration should be tested with the antenna in its fully extended and fully retracted positions. These

test configurations should be tested at the high, middle and low frequency channels of each operating mode; for example, AMPS, CDMA, and TDMA. If the SAR measured at the middle channel for each test configuration (left, right, Cheek/Touch, Tilt/Ear, extended and retracted) is at least 2.0 dB lower than the SAR limit, testing at the high and low channels is optional for such test configuration(s). If the transmission band of the test device is less than 10 MHz, testing at the high and low frequency channels is optional.

Ear /Tilt 15° Position



5.4 Test positions for body-worn and other configurations

Body-worn operating configurations should be tested with the belt-clips and holsters attached to the device and positioned against a flat phantom in normal use configurations. Devices with a headset output should be tested with a headset connected to the device. When multiple accessories that do not contain metallic components are supplied with the device, the device may be tested with only the accessory that dictates the closest spacing to the body. When multiple accessories that contain metallic components are supplied with the device, the device must be tested with each accessory that contains a unique metallic component. If multiple accessories share an identical metallic component (e.g., the same metallic belt-clip used with different holsters with no other metallic components), only the accessory that dictates the closest spacing to the body must be tested.

Body-worn accessories may not always be supplied or available as options for some devices that are intended to be authorized for body-worn use. A separation distance of 1.5 cm between the back of the device and a flat phantom is recommended for testing body-worn SAR compliance under such circumstances. Other separation distances may be used, but they should not exceed 2.5 cm. In these cases, the device may use body-worn accessories that provide a separation distance greater than that tested for the device provided however that the accessory contains no metallic components.

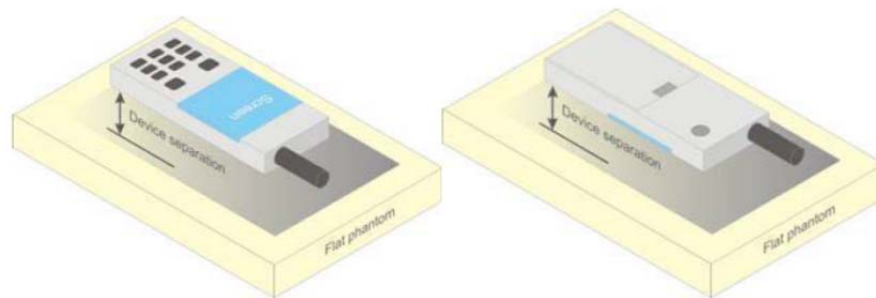


Figure 5 – Test positions for body-worn devices

5.5 Test Distance for SAR Evaluation

In this case the EUT(Equipment Under Test) is set 10mm away from the phantom, the test distance is 10mm.

5.6 SAR Evaluation Procedure

The evaluation was performed with the following procedure:

Step 1: Measurement of the SAR value at a fixed location above the ear point or central position was used as a reference value for assessing the power drop. The SAR at this point is measured at the start of the test and then again at the end of the testing.

Step 2: The SAR distribution at the exposed side of the head was measured at a distance of 4 mm from the inner surface of the shell. The area covered the entire dimension of the head or radiating structures of the EUT, the horizontal grid spacing was 15 mm x 15 mm, and the SAR distribution was determined by integrated grid of 1.5mm x 1.5mm. Based on these data, the area of the maximum absorption was determined by spline interpolation. The first Area Scan covers the entire dimension of the EUT to ensure that the hotspot was correctly identified.

Step 3: Around this point, a volume of 30 mm x 30 mm x 30 mm was assessed by measuring 7x 7 x 7 points. On the basis of this data set, the spatial peak SAR value was evaluated under the following procedure:

1) The data at the surface were extrapolated, since the center of the dipoles is 1.2 mm away from the tip of the probe and the distance between the surface and the lowest measuring point is 1.3 mm. The extrapolation was based on a least square algorithm. A polynomial of the fourth order was calculated through the points in z-axes. This polynomial was then used to evaluate the points between the surface and the probe tip.

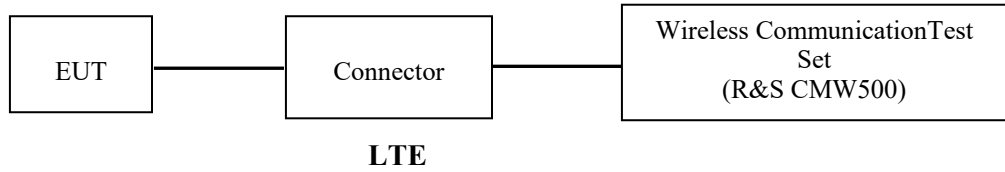
2) The maximum Measured value was searched with a straightforward algorithm. Around this maximum the SAR values averaged over the spatial volumes (1 g or 10 g) were computed by the 3D-Spline interpolation algorithm. The 3D-Spline is composed of three one dimensional splines with the "Not a knot"-condition (in x, y and z-directions). The volume was integrated with the trapezoidal-algorithm. One thousand points (10 x 10 x 10) were Measured to calculate the averages.

All neighboring volumes were evaluated until no neighboring volume with a higher average value was found.

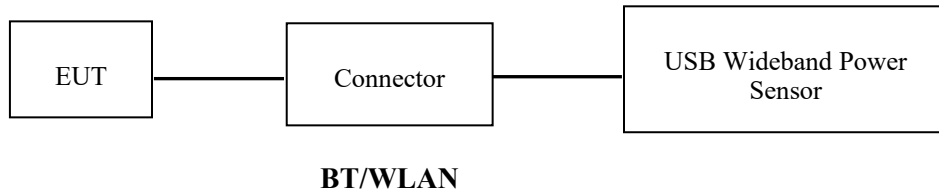
Step 4: Re-measurement of the SAR value at the same location as in Step 1. If the value changed by more than 5%, the evaluation was repeated.

6. CONDUCTED OUTPUT POWER MEASUREMENT

The RF output of the transmitter was connected to the input of the Wireless Communication Test Set through Connector.



The RF output of the transmitter was connected to the input port of the USB Wideband Power Sensor through Connector.



6.2 Description of Test Configuration

EUT Operation Condition:

EUT Operation Mode:	The system was configured for testing in each operation mode.
Equipment Modifications:	No
EUT Exercise Software:	No

The maximum power was configured per 3GPP Standard for each operation modes as below setting:

LTE (FDD):

The following tests were conducted according to the test requirements in 3GPP TS36.101

The following tests were conducted according to the test requirements outlined in section 6.2 of the 3GPP TS36.101 specification.

UE Power Class: 3 (23 +/- 2dBm). The allowed Maximum Power Reduction (MPR) for the maximum output power due to higher order modulation and transmit bandwidth configuration (resource blocks) is specified in Table 6.2.3-1 of the 3GPP TS36.101.

Table 6.2.3-1: Maximum Power Reduction (MPR) for Power Class 3

Modulation	Channel bandwidth / Transmission bandwidth (RB)						MPR (dB)
	1.4 MHz	3.0 MHz	5 MHz	10 MHz	15 MHz	20 MHz	
QPSK	> 5	> 4	> 8	> 12	> 16	> 18	≤ 1
16 QAM	≤ 5	≤ 4	≤ 8	≤ 12	≤ 16	≤ 18	≤ 1
16 QAM	> 5	> 4	> 8	> 12	> 16	> 18	≤ 2

The allowed A-MPR values specified below in Table 6.2.4.-1 of 3GPP TS36.101 are in addition to the allowed MPR requirements. All the measurements below were performed with A-MPR disabled, by using Network Signaling Value of "NS_01".

Table 6.2.4-1: Additional Maximum Power Reduction (A-MPR)

Network Signalling value	Requirements (sub-clause)	E-UTRA Band	Channel bandwidth (MHz)	Resources Blocks (N_{RB})	A-MPR (dB)
NS_01	6.6.2.1.1	Table 5.5-1	1.4, 3, 5, 10, 15, 20	Table 5.6-1	NA
NS_03	6.6.2.2.1	2, 4, 10, 23, 25, 35, 36	3	>5	≤ 1
			5	>6	≤ 1
			10	>6	≤ 1
			15	>8	≤ 1
NS_04	6.6.2.2.2	41	20	>10	≤ 1
			5	>6	≤ 1
NS_05	6.6.3.3.1	1	10, 15, 20	≥ 50	≤ 1
NS_06	6.6.2.2.3	12, 13, 14, 17	1.4, 3, 5, 10	Table 5.6-1	n/a
NS_07	6.6.2.2.3	13	10	Table 6.2.4-2	Table 6.2.4-2
	6.6.3.3.2				
NS_08	6.6.3.3.3	19	10, 15	> 44	≤ 3
NS_09	6.6.3.3.4	21	10, 15	> 40	≤ 1
				> 55	≤ 2
NS_10		20	15, 20	Table 6.2.4-3	Table 6.2.4-3
NS_11	6.6.2.2.1	23	1.4, 3, 5, 10	Table 6.2.4-5	Table 6.2.4-5
..					
NS_32	-	-	-	-	-

Note 1: Applies to the lower block of Band 23, i.e. a carrier placed in the 2000-2010 MHz region.

TDD-LTE

P TS 36.211 section 4.2 for Type 2 Frame Structure and Table 4.2-2 for uplink-downlink configurations and Table 4.2-1 for Special subframe configurations.

Table 4.2-1: Configuration of special subframe (lengths of DwPTS/GP/UpPTS).

Special subframe configuration	Normal cyclic prefix in downlink			Extended cyclic prefix in downlink		
	DwPTS	UpPTS		DwPTS	UpPTS	
		Normal cyclic prefix in uplink	Extended cyclic prefix in uplink		Normal cyclic prefix in uplink	Extended cyclic prefix in uplink
0	$6592 \cdot T_s$	$2192 \cdot T_s$	$2560 \cdot T_s$	$7680 \cdot T_s$	$2192 \cdot T_s$	$2560 \cdot T_s$
1	$19760 \cdot T_s$			$20480 \cdot T_s$		
2	$21952 \cdot T_s$			$23040 \cdot T_s$		
3	$24144 \cdot T_s$			$25600 \cdot T_s$		
4	$26336 \cdot T_s$			$7680 \cdot T_s$		
5	$6592 \cdot T_s$	$4384 \cdot T_s$	$5120 \cdot T_s$	$20480 \cdot T_s$	$4384 \cdot T_s$	$5120 \cdot T_s$
6	$19760 \cdot T_s$			$23040 \cdot T_s$		
7	$21952 \cdot T_s$			$12800 \cdot T_s$		
8	$24144 \cdot T_s$			-		
9	$13168 \cdot T_s$			-		

Table 4.2-2: Uplink-downlink configurations.

Uplink-downlink configuration	Downlink-to-Uplink Switch-point periodicity	Subframe number									
		0	1	2	3	4	5	6	7	8	9
0	5 ms	D	S	U	U	U	D	S	U	U	U
1	5 ms	D	S	U	U	D	D	S	U	U	D
2	5 ms	D	S	U	D	D	D	S	U	D	D
3	10 ms	D	S	U	U	U	D	D	D	D	D
4	10 ms	D	S	U	U	D	D	D	D	D	D
5	10 ms	D	S	U	D	D	D	D	D	D	D
6	5 ms	D	S	U	U	U	D	S	U	U	D

Calculated Duty Cycle

Uplink-Downlink Configuration	Downlink-to-Uplink Switch-point Periodicity	Subframe Number										Calculated Duty Cycle (%)
		0	1	2	3	4	5	6	7	8	9	
0	5 ms	D	S	U	U	U	D	S	U	U	U	63.33
1	5 ms	D	S	U	U	D	D	S	U	U	D	43.33
2	5 ms	D	S	U	D	D	D	S	U	D	D	23.33
3	10 ms	D	S	U	U	U	D	D	D	D	D	31.67
4	10 ms	D	S	U	U	D	D	D	D	D	D	21.67
5	10 ms	D	S	U	D	D	D	D	D	D	D	11.67
6	5 ms	D	S	U	U	U	D	S	U	U	D	53.33

We used configuration 0 for LTE Band 41 SAR test, that is 63.33%(1:1.58)for duty cycle.

6.3 Maximum Target Output Power

Max Target Power(dBm)			
Mode/Band	Channel		
	Low	Middle	High
LTE Band 2	23.1	23.1	23.1
LTE Band 4	23.6	23.6	23.6
LTE Band 5	23.5	23.5	23.5
LTE Band 7	22.6	22.6	22.6
LTE Band 12	23.5	23.5	23.5
LTE Band 13	23.6	23.6	23.6
LTE Band 14	20.1	20.1	20.1
LTE Band 17	23.5	23.5	23.5
LTE Band 25	23.1	23.1	23.1
LTE Band 26	23.5	23.5	23.5
LTEBand41	22.9	22.9	22.9
LTEBand66	23.6	23.6	23.6
LTEBand71	23.5	23.5	23.5
WLAN 2.4G(802.11b)	17.9	17.9	17.9
WLAN 2.4G(802.11g)	14.1	14.1	14.1
WLAN 2.4G(802.11n ht20)	13.7	13.7	13.7
WLAN 2.4G(802.11n ht40)	13.1	13.1	13.1
WLAN 5.2G(802.11a)	15	15	15
WLAN 5.2G(802.11n ht20)	14.7	14.7	14.7
WLAN 5.2G(802.11n ht40)	14.9	/	14.9
WLAN 5.2G(802.11ac v ht80)	/	13.4	/
WLAN 5.3G(802.11a)	15.6	15.6	15.6
WLAN 5.3G(802.11n ht20)	15.2	15.2	15.2
WLAN 5.3G(802.11n ht40)	15.6	/	15.6
WLAN 5.3G(802.11ac v ht80)	/	13.5	/
WLAN 5.6G(802.11a)	15.7	15.7	15.7
WLAN 5.6G(802.11n ht20)	14.4	14.4	14.4
WLAN 5.6G(802.11n ht40)	15.7	15.7	15.7
WLAN 5.6G(802.11ac v ht80)	13.4	13.4	13.4
WLAN 5.8G(802.11a)	15.8	15.8	15.8
WLAN 5.8G(802.11n ht20)	15.4	15.4	15.4
WLAN 5.8G(802.11n ht40)	15.8	/	15.8
WLAN 5.8G(802.11ac v ht80)	/	15	/
Bluetooth BDR/EDR	10.5	10.5	10.5
BLE 1M	1.5	1.5	1.5

6.4 Test Results:**LTE Band 2:**

Test Bandwidth	Test Modulation	Resource Block & RB offset	Target MPR	Meas MPR	Low Channel (dBm)	Middle Channel (dBm)	High Channel (dBm)
1.4M	QPSK	RB1#0	0	0	22.69	22.71	22.56
		RB1#3	0	0	22.76	22.76	22.56
		RB1#5	0	0	22.63	22.68	22.53
		RB3#0	1	1	22.63	22.68	22.52
		RB3#3	1	1	22.69	22.75	22.64
		RB6#0	1	1	21.74	21.62	21.55
	16-QAM	RB1#0	1	1	21.78	21.64	21.69
		RB1#3	1	1	21.84	21.63	21.82
		RB1#5	2	2	21.87	21.65	21.56
		RB3#0	2	2	21.68	21.6	21.59
		RB3#3	2	2	21.79	21.65	21.54
3M	QPSK	RB1#0	0	0	22.8	22.56	22.64
		RB1#8	0	0	22.68	22.61	22.51
		RB1#14	0	0	22.75	22.67	22.56
		RB6#0	1	1	21.74	21.76	21.72
		RB6#9	1	1	21.66	21.63	21.72
	16-QAM	RB15#0	1	1	21.79	21.75	21.72
		RB1#0	1	1	22.42	21.61	22.16
		RB1#8	1	1	21.96	21.74	22.16
		RB1#14	1	1	21.78	21.65	22.25
		RB6#0	2	2	20.84	20.62	20.65
		RB6#9	2	2	20.71	20.69	20.71
5M	QPSK	RB15#0	2	2	20.84	20.74	20.76
		RB1#0	0	0	22.94	22.85	22.73
		RB1#13	0	0	22.84	22.73	22.6
		RB1#24	0	0	22.79	22.58	22.5
		RB15#0	1	1	21.8	21.65	21.68
		RB15#10	1	1	21.75	21.75	21.73
	16-QAM	RB25#0	1	1	21.67	21.72	21.69
		RB1#0	1	1	21.74	22.01	21.97
		RB1#13	1	1	21.8	22.03	21.79
		RB1#24	1	1	21.61	22.02	21.71
		RB15#0	2	2	20.88	20.67	20.61
RB15#10	2	2	20.85	20.68	20.76		
RB25#0	2	2	20.92	20.74	20.72		

Test Bandwidth	Test Modulation	Resource Block & RB offset	Target MPR	Meas MPR	Low Channel (dBm)	Middle Channel (dBm)	High Channel (dBm)
10M	QPSK	RB1#0	0	0	22.73	22.85	22.79
		RB1#25	0	0	22.84	22.56	22.45
		RB1#49	1	1	22.92	22.69	22.57
		RB25#0	1	1	21.64	21.64	21.62
		RB25#25	1	1	21.72	21.59	21.61
		RB50#0	1	1	21.73	21.77	21.61
	16-QAM	RB1#0	1	1	21.87	21.88	22.38
		RB1#25	1	1	21.93	21.69	22.14
		RB1#49	1	1	21.95	21.71	22.28
		RB25#0	2	2	20.78	20.71	20.67
		RB25#25	2	2	20.75	20.71	20.69
		RB50#0	2	2	20.74	20.6	20.69
15M	QPSK	RB1#0	0	0	22.76	22.74	22.64
		RB1#38	0	0	22.71	22.67	22.55
		RB1#74	1	1	22.74	22.65	22.69
		RB36#0	1	1	21.74	21.69	21.51
		RB36#39	1	1	21.82	21.45	21.57
		RB75#0	1	1	21.76	21.64	21.5
	16-QAM	RB1#0	1	1	22.54	21.78	22.08
		RB1#38	1	1	22.24	21.73	21.94
		RB1#74	2	2	22.36	21.83	22.2
		RB36#0	2	2	20.74	20.57	20.6
		RB36#39	2	2	20.74	20.59	20.61
		RB75#0	2	2	20.77	20.57	20.48
20M	QPSK	RB1#0	0	0	22.63	22.62	22.4
		RB1#50	0	0	22.88	22.96	22.93
		RB1#99	0	0	22.3	22.21	22.26
		RB50#0	1	1	21.73	21.58	21.45
		RB50#50	1	1	21.55	21.52	21.43
		RB100#0	1	1	21.62	21.68	21.39
	16-QAM	RB1#0	1	1	21.95	22.23	21.67
		RB1#50	1	1	22.07	22.22	21.79
		RB1#99	2	2	21.64	21.67	21.52
		RB50#0	2	2	20.84	20.56	20.51
		RB50#50	2	2	20.68	20.56	20.47
		RB100#0	2	2	20.72	20.57	20.54

LTE Band 4:

Test Bandwidth	Test Modulation	Resource Block & RB offset	Target MPR	Meas MPR	Low Channel (dBm)	Middle Channel (dBm)	High Channel (dBm)
1.4M	QPSK	RB1#0	0	0	22.63	22.83	22.62
		RB1#3	0	0	22.72	22.85	22.67
		RB1#5	0	0	22.64	22.88	22.67
		RB3#0	1	1	22.64	22.94	22.67
		RB3#3	1	1	22.76	22.83	22.77
		RB6#0	1	1	21.75	21.97	21.77
	16-QAM	RB1#0	1	1	21.84	21.94	21.83
		RB1#3	1	1	21.91	22.02	21.75
		RB1#5	1	1	21.93	22.24	21.79
		RB3#0	2	2	21.69	21.74	21.72
		RB3#3	2	2	21.74	21.91	21.66
		RB6#0	2	2	20.72	20.92	20.73
3M	QPSK	RB1#0	0	0	22.78	22.82	22.71
		RB1#8	0	0	22.74	22.85	22.74
		RB1#14	0	0	22.69	22.74	22.68
		RB6#0	1	1	21.68	21.91	21.68
		RB6#9	1	1	21.61	21.93	21.79
		RB15#0	1	1	21.73	21.76	21.84
	16-QAM	RB1#0	1	1	21.77	21.82	22.46
		RB1#8	1	1	21.68	21.85	22.33
		RB1#14	1	1	21.75	21.74	22.33
		RB6#0	2	2	20.59	20.77	20.82
		RB6#9	2	2	20.63	20.97	20.74
		RB15#0	2	2	20.69	21.43	20.84
5M	QPSK	RB1#0	0	0	22.71	22.85	22.98
		RB1#13	0	0	22.67	22.83	22.74
		RB1#24	0	0	22.72	22.74	22.66
		RB15#0	1	1	21.78	21.79	21.93
		RB15#10	1	1	21.63	21.81	21.66
		RB25#0	1	1	21.72	21.81	21.83
	16-QAM	RB1#0	1	1	22.09	21.95	21.82
		RB1#13	1	1	22.12	21.93	21.71
		RB1#24	1	1	22.24	21.95	21.74
		RB15#0	2	2	20.66	20.96	21.42
		RB15#10	2	2	20.73	20.72	20.73
		RB25#0	2	2	20.83	20.91	20.76

Test Bandwidth	Test Modulation	Resource Block & RB offset	Target MPR	Meas MPR	Low Channel (dBm)	Middle Channel (dBm)	High Channel (dBm)
10M	QPSK	RB1#0	0	0	22.77	23.04	22.91
		RB1#25	0	0	22.77	22.86	22.63
		RB1#49	0	0	23.06	23.15	23.05
		RB25#0	1	1	21.58	21.84	21.66
		RB25#25	1	1	21.74	21.95	21.87
		RB50#0	1	1	21.83	21.92	21.79
	16-QAM	RB1#0	1	1	22.01	21.95	22.53
		RB1#25	1	1	21.93	21.76	22.31
		RB1#49	1	1	22.26	22.16	22.71
		RB25#0	2	2	20.75	21.04	20.69
		RB25#25	2	2	20.72	21.12	21.01
		RB50#0	2	2	20.72	21.08	20.81
15M	QPSK	RB1#0	0	0	22.57	22.49	22.45
		RB1#38	0	0	22.63	22.74	22.54
		RB1#74	0	0	22.57	22.49	22.31
		RB36#0	1	1	21.58	21.55	21.57
		RB36#39	1	1	21.59	21.63	21.54
		RB75#0	1	1	21.68	21.81	21.51
	16-QAM	RB1#0	1	1	21.71	21.89	22.2
		RB1#38	1	1	21.75	22.23	22.16
		RB1#74	1	1	21.67	21.96	21.87
		RB36#0	2	2	20.73	20.66	20.58
		RB36#39	2	2	20.72	20.57	20.45
		RB75#0	2	2	20.62	20.73	20.45
20M	QPSK	RB1#0	0	0	22.41	22.34	22.17
		RB1#50	0	0	22.74	22.71	22.63
		RB1#99	0	0	22.43	22.59	22.29
		RB50#0	1	1	21.68	21.62	21.45
		RB50#50	1	1	21.77	21.64	21.44
		RB100#0	1	1	21.69	21.61	21.37
	16-QAM	RB1#0	1	1	21.62	21.84	21.63
		RB1#50	1	1	22.11	22.36	21.88
		RB1#99	1	1	21.76	22.05	21.56
		RB50#0	2	2	20.59	20.54	20.42
		RB50#50	2	2	20.64	20.66	20.52
		RB100#0	2	2	20.74	20.71	20.53

LTE Band 5:

Test Bandwidth	Test Modulation	Resource Block & RB offset	Target MPR	Meas MPR	Low Channel (dBm)	Middle Channel (dBm)	High Channel (dBm)
1.4M	QPSK	RB1#0	0	0	23.14	23.05	22.9
		RB1#3	0	0	22.99	23.16	22.84
		RB1#5	0	0	23.09	23.15	22.8
		RB3#0	1	1	22.97	23.07	22.88
		RB3#3	1	1	22.99	23.11	22.84
		RB6#0	1	1	22.17	22.01	21.87
	16-QAM	RB1#0	1	1	22.16	22.1	21.82
		RB1#3	1	1	22.19	22.15	22.04
		RB1#5	2	2	22.12	22.08	21.93
		RB3#0	2	2	22.14	22.19	22.02
		RB3#3	2	2	21.97	22.17	22.12
		RB6#0	2	2	21.03	21.14	21.54
3M	QPSK	RB1#0	0	0	23.05	23.02	22.98
		RB1#8	0	0	22.99	23.07	22.93
		RB1#14	0	0	23.02	22.98	22.92
		RB6#0	1	1	22.03	22.09	22.03
		RB6#9	1	1	22.02	22.04	21.91
		RB15#0	1	1	21.98	22.11	22.06
	16-QAM	RB1#0	1	1	22.77	22.04	21.94
		RB1#8	1	1	22.65	22.14	21.97
		RB1#14	1	1	22.61	22.21	21.86
		RB6#0	2	2	21.11	20.95	21.03
		RB6#9	2	2	21.17	21.13	20.8
		RB15#0	2	2	21.16	21.04	21.09
5M	QPSK	RB1#0	0	0	23.19	23.05	22.96
		RB1#13	0	0	23.2	23.08	23.05
		RB1#24	0	0	23.06	23.07	22.84
		RB15#0	1	1	22.12	22.02	22.03
		RB15#10	1	1	22.04	22.02	21.95
		RB25#0	1	1	22.09	22.19	22.02
	16-QAM	RB1#0	1	1	22.05	22.24	22.16
		RB1#13	1	1	22.23	22.39	22.11
		RB1#24	1	1	21.96	22.33	21.95
		RB15#0	2	2	21.03	21.01	21.12
		RB15#10	2	2	21.1	21.12	20.91
		RB25#0	2	2	21.13	21.19	21.12

Test Bandwidth	Test Modulation	Resource Block & RB offset	Target MPR	Meas MPR	Low Channel (dBm)	Middle Channel (dBm)	High Channel (dBm)
10M	QPSK	RB1#0	0	0	23.11	23.14	23.13
		RB1#25	0	0	23.21	22.97	22.93
		RB1#49	1	1	23.43	23.41	22.82
		RB25#0	1	1	22.17	22.1	22.15
		RB25#25	1	1	22.33	22.13	22.03
		RB50#0	1	1	22.08	22.2	22.07
	16-QAM	RB1#0	1	1	22.87	22.34	22.15
		RB1#25	1	1	22.62	22.15	22.06
		RB1#49	1	1	22.95	22.59	21.75
		RB25#0	2	2	21.24	21.11	21.18
		RB25#25	2	2	21.31	21.13	21.21
		RB50#0	2	2	21.06	21.18	21.06

LTE Band 7:

Test Bandwidth	Test Modulation	Resource Block & RB offset	Target MPR	Meas MPR	Low Channel (dBm)	Middle Channel (dBm)	High Channel (dBm)
5M	QPSK	RB1#0	0	0	22.48	22.24	22.22
		RB1#13	0	0	22.38	22.28	22.27
		RB1#24	0	0	22.36	22.2	22.12
		RB15#0	1	1	21.4	21.28	21.24
		RB15#10	1	1	21.32	21.21	21.11
		RB25#0	1	1	21.41	21.13	21.31
	16-QAM	RB1#0	1	1	21.79	21.56	21.52
		RB1#13	1	1	21.7	21.48	21.28
		RB1#24	1	1	21.63	21.54	21.28
		RB15#0	2	2	20.34	20.26	20.29
		RB15#10	2	2	20.36	20.09	20.24
		RB25#0	2	2	20.38	20.15	20.19
10M	QPSK	RB1#0	0	0	22.43	22.37	22.42
		RB1#25	0	0	22.35	22.09	22.39
		RB1#49	0	0	22.33	22.33	22.34
		RB25#0	1	1	21.37	21.29	21.27
		RB25#25	1	1	21.42	21.13	21.24
		RB50#0	1	1	21.45	21.26	21.16
	16-QAM	RB1#0	1	1	21.47	21.61	21.95
		RB1#25	1	1	21.25	21.28	21.74
		RB1#49	1	1	21.37	21.46	21.85
		RB25#0	2	2	20.44	20.22	20.17
		RB25#25	2	2	20.48	20.21	20.3
		RB50#0	2	2	20.42	20.1	20.23
15M	QPSK	RB1#0	0	0	22.36	22.21	22.04
		RB1#38	0	0	22.38	22.27	22.26
		RB1#74	0	0	22.15	22.26	22.24
		RB36#0	1	1	21.44	21.27	21.29
		RB36#39	1	1	21.38	21.34	21.26
		RB75#0	1	1	21.41	21.35	21.15
	16-QAM	RB1#0	1	1	21.99	21.29	21.39
		RB1#38	1	1	22.06	21.58	21.6
		RB1#74	1	1	21.81	21.4	21.43
		RB36#0	2	2	20.52	20.38	20.24
		RB36#39	2	2	20.51	20.37	20.33
		RB75#0	2	2	20.57	20.33	20.17

Test Bandwidth	Test Modulation	Resource Block & RB offset	Target MPR	Meas MPR	Low Channel (dBm)	Middle Channel (dBm)	High Channel (dBm)
20M	QPSK	RB1#0	0	0	22.29	22.31	22.33
		RB1#50	0	0	22.33	22.41	22.35
		RB1#99	0	0	22.26	22.17	22.25
		RB50#0	1	1	21.58	21.54	21.43
		RB50#50	1	1	21.37	21.3	21.31
		RB100#0	1	1	21.27	21.29	21.22
	16-QAM	RB1#0	1	1	21.93	21.75	21.29
		RB1#50	1	1	21.99	21.65	21.45
		RB1#99	1	1	21.81	21.62	21.34
		RB50#0	2	2	20.45	20.31	20.26
		RB50#50	2	2	20.37	20.35	20.24
		RB100#0	2	2	20.43	20.44	20.27

LTE Band 12:

Test Bandwidth	Test Modulation	Resource Block & RB offset	Target MPR	Meas MPR	Low Channel (dBm)	Middle Channel (dBm)	High Channel (dBm)
1.4M	QPSK	RB1#0	0	0	23.07	22.98	22.89
		RB1#3	0	0	22.96	22.99	22.91
		RB1#5	0	0	22.98	23.12	22.85
		RB3#0	1	1	23.02	23.12	22.97
		RB3#3	1	1	22.99	22.99	22.83
		RB6#0	1	1	21.89	21.96	21.94
	16-QAM	RB1#0	1	1	21.88	22.06	21.93
		RB1#3	1	1	21.94	22.23	21.88
		RB1#5	2	2	22.05	22.12	21.85
		RB3#0	2	2	22.45	21.98	21.96
		RB3#3	2	2	21.88	22.08	22.21
		RB6#0	2	2	20.82	21.04	20.91
3M	QPSK	RB1#0	0	0	23.08	22.96	22.95
		RB1#8	0	0	23.09	23.04	22.98
		RB1#14	0	0	23.11	23.12	23.04
		RB6#0	1	1	21.88	22.47	22.07
		RB6#9	1	1	22.12	22.06	21.92
		RB15#0	1	1	22.01	22.11	21.96
	16-QAM	RB1#0	1	1	22.03	22.59	22.09
		RB1#8	1	1	21.99	22.59	22.04
		RB1#14	1	1	22.11	22.62	22.06
		RB6#0	2	2	20.91	21.12	20.91
		RB6#9	2	2	21.08	21.02	20.96
		RB15#0	2	2	21.01	21.1	20.95

Test Bandwidth	Test Modulation	Resource Block & RB offset	Target MPR	Meas MPR	Low Channel (dBm)	Middle Channel (dBm)	High Channel (dBm)
5M	QPSK	RB1#0	0	0	23.04	23.11	22.97
		RB1#13	0	0	23.23	23.17	23.21
		RB1#24	0	0	23.21	23.14	23.01
		RB15#0	1	1	22.03	22.01	22.11
		RB15#10	1	1	22.06	22.1	21.99
		RB25#0	1	1	22.14	22.06	22.08
	16-QAM	RB1#0	1	1	22.29	22.2	21.9
		RB1#13	1	1	22.4	22.2	22.01
		RB1#24	1	1	22.44	22.33	21.87
		RB15#0	2	2	21.16	21.18	21.06
		RB15#10	2	2	21.09	20.96	21.02
		RB25#0	2	2	21.13	21.04	21.17
10M	QPSK	RB1#0	0	0	23.22	23.32	23.26
		RB1#25	0	0	23.01	23.01	22.95
		RB1#49	0	0	23.29	23.28	23.21
		RB25#0	1	1	22.19	22.22	22.14
		RB25#25	1	1	22.2	22.25	22.18
		RB50#0	1	1	22.14	22.09	22.05
	16-QAM	RB1#0	1	1	22.09	22.84	22.44
		RB1#25	1	1	22.04	22.73	22.12
		RB1#49	1	1	22.21	22.8	22.33
		RB25#0	2	2	21.13	21.07	21.06
		RB25#25	2	2	21.29	21.2	21.23
		RB50#0	2	2	21.23	21.06	21.05

LTE Band 13:

Test Bandwidth	Test Modulation	Resource Block & RB offset	Target MPR	Meas MPR	Low Channel (dBm)	Middle Channel (dBm)	High Channel (dBm)
5M	QPSK	RB1#0	0	0	23.47	/	23.24
		RB1#13	0	0	23.42	/	23.25
		RB1#24	0	0	23.39	/	23.38
		RB15#0	1	1	22.46	/	22.26
		RB15#10	1	1	22.48	/	22.41
		RB25#0	1	1	22.59	/	22.34
	16-QAM	RB1#0	1	1	22.63	/	22.26
		RB1#13	1	1	22.7	/	22.27
		RB1#24	2	2	22.56	/	22.24
		RB15#0	2	2	21.46	/	21.39
		RB15#10	2	2	21.35	/	21.34
		RB25#0	2	2	21.43	/	21.23
10M	QPSK	RB1#0	0	0	/	23.47	/
		RB1#25	0	0	/	23.38	/
		RB1#49	0	0	/	23.54	/
		RB25#0	1	1	/	22.56	/
		RB25#25	1	1	/	22.45	/
		RB50#0	1	1	/	22.49	/
	16-QAM	RB1#0	1	1	/	22.67	/
		RB1#25	1	1	/	22.48	/
		RB1#49	1	1	/	22.74	/
		RB25#0	2	2	/	21.54	/
		RB25#25	2	2	/	21.36	/
		RB50#0	2	2	/	21.54	/

LTE Band 14:

Test Bandwidth	Test Modulation	Resource Block & RB offset	Target MPR	Meas MPR	Low Channel (dBm)	Middle Channel (dBm)	High Channel (dBm)
5M	QPSK	RB1#0	0	0	19.76	19.82	19.78
		RB1#13	0	0	19.91	19.84	19.77
		RB1#24	0	0	19.86	19.78	19.67
		RB15#0	1	1	18.75	18.81	18.73
		RB15#10	1	1	18.86	18.75	18.70
		RB25#0	1	1	18.77	18.75	18.69
	16-QAM	RB1#0	1	1	18.67	19.16	18.83
		RB1#13	1	1	18.68	19.00	18.92
		RB1#24	2	2	18.83	19.07	18.65
		RB15#0	2	2	17.81	17.82	17.90
		RB15#10	2	2	17.98	17.79	17.84
		RB25#0	2	2	17.90	17.75	17.80
10M	QPSK	RB1#0	0	0	/	19.97	/
		RB1#25	0	0	/	19.60	/
		RB1#49	0	0	/	19.79	/
		RB25#0	1	1	/	18.96	/
		RB25#25	1	1	/	18.76	/
		RB50#0	1	1	/	18.92	/
	16-QAM	RB1#0	1	1	/	19.30	/
		RB1#25	1	1	/	18.79	/
		RB1#49	1	1	/	19.05	/
		RB25#0	2	2	/	17.88	/
		RB25#25	2	2	/	17.66	/
		RB50#0	2	2	/	17.76	/

LTE Band 17:

Test Bandwidth	Test Modulation	Resource Block & RB offset	Target MPR	Meas MPR	Low Channel (dBm)	Middle Channel (dBm)	High Channel (dBm)
5M	QPSK	RB1#0	0	0	23.41	23.11	23.12
		RB1#13	0	0	23.35	22.97	23.23
		RB1#24	0	0	23.12	22.97	23.06
		RB15#0	1	1	22.23	21.96	22.12
		RB15#10	1	1	22.24	22.03	22.18
		RB25#0	1	1	22.27	21.96	22.15
	16-QAM	RB1#0	1	1	22.51	22.09	22.12
		RB1#13	1	1	22.66	22.01	22.18
		RB1#24	1	1	22.36	22.22	21.99
		RB15#0	2	2	21.22	21.11	21.23
		RB15#10	2	2	21.14	21.05	21.03
		RB25#0	2	2	21.26	20.94	21.25
10M	QPSK	RB1#0	0	0	23.42	23.37	23.34
		RB1#25	0	0	23.12	23.07	23.01
		RB1#49	1	1	23.33	23.2	23.08
		RB25#0	1	1	22.13	22.16	22.15
		RB25#25	1	1	22.28	22.12	21.95
		RB50#0	1	1	22.25	22.24	22.03
	16-QAM	RB1#0	1	1	22.52	22.33	22.94
		RB1#25	1	1	22.15	22.25	22.71
		RB1#49	1	1	22.33	22.07	22.75
		RB25#0	2	2	21.36	21.21	21.13
		RB25#25	2	2	21.16	21.15	21.03
		RB50#0	2	2	21.11	21.11	21.12

LTE Band 25:

Test Bandwidth	Test Modulation	Resource Block & RB offset	Target MPR	Meas MPR	Low Channel (dBm)	Middle Channel (dBm)	High Channel (dBm)
1.4M	QPSK	RB1#0	0	0	22.66	22.56	22.52
		RB1#3	0	0	22.78	22.61	22.64
		RB1#5	0	0	22.75	22.45	22.39
		RB3#0	1	1	22.69	22.73	22.46
		RB3#3	1	1	22.91	22.55	22.55
		RB6#0	1	1	21.86	21.61	21.59
	16-QAM	RB1#0	1	1	21.77	21.61	21.56
		RB1#3	1	1	21.78	21.74	21.64
		RB1#5	2	2	21.83	21.63	21.62
		RB3#0	2	2	21.78	21.79	21.65
		RB3#3	2	2	21.84	21.73	21.54
3M	QPSK	RB1#0	0	0	22.74	22.71	22.61
		RB1#8	0	0	22.93	22.65	22.72
		RB1#14	0	0	22.68	22.57	22.58
		RB6#0	1	1	21.78	21.63	21.61
		RB6#9	1	1	21.78	21.62	21.64
		RB15#0	1	1	21.87	21.63	21.65
	16-QAM	RB1#0	1	1	22.3	21.72	21.64
		RB1#8	1	1	22.35	21.78	21.64
		RB1#14	1	1	22.33	21.76	21.49
		RB6#0	2	2	20.82	20.58	20.62
		RB6#9	2	2	20.97	20.59	20.65
		RB15#0	2	2	20.94	20.54	20.74
5M	QPSK	RB1#0	0	0	23.03	22.74	22.69
		RB1#13	0	0	22.81	22.67	22.67
		RB1#24	0	0	22.92	22.82	22.54
		RB15#0	1	1	21.88	21.69	21.62
		RB15#10	1	1	21.76	21.74	21.71
		RB25#0	1	1	21.87	21.62	21.66
	16-QAM	RB1#0	1	1	22.23	21.77	21.58
		RB1#13	1	1	22.26	21.82	21.43
		RB1#24	1	1	22.15	21.77	21.53
		RB15#0	2	2	20.92	20.71	20.67
		RB15#10	2	2	20.85	20.73	20.61
RB25#0	2	2	20.93	20.67	20.68		

Test Bandwidth	Test Modulation	Resource Block & RB offset	Target MPR	Meas MPR	Low Channel (dBm)	Middle Channel (dBm)	High Channel (dBm)
10M	QPSK	RB1#0	0	0	22.91	22.68	22.79
		RB1#25	0	0	22.71	22.53	22.57
		RB1#49	1	1	22.86	22.82	22.79
		RB25#0	1	1	21.86	21.74	21.64
		RB25#25	1	1	21.92	21.63	21.74
		RB50#0	1	1	21.91	21.71	21.75
	16-QAM	RB1#0	1	1	21.93	22.39	21.94
		RB1#25	1	1	21.74	22.11	21.93
		RB1#49	1	1	21.96	22.46	21.92
		RB25#0	2	2	20.96	20.71	20.75
		RB25#25	2	2	21.06	20.85	20.77
		RB50#0	2	2	20.92	20.68	20.63
15M	QPSK	RB1#0	0	0	22.88	22.52	22.68
		RB1#38	0	0	22.79	22.62	22.64
		RB1#74	1	1	22.85	22.68	22.57
		RB36#0	1	1	21.89	21.67	21.76
		RB36#39	1	1	21.93	21.76	21.7
		RB75#0	1	1	21.95	21.7	21.74
	16-QAM	RB1#0	1	1	22.14	22.23	21.83
		RB1#38	1	1	22.29	22.15	21.79
		RB1#74	2	2	22.17	22.36	21.75
		RB36#0	2	2	20.72	20.74	20.79
		RB36#39	2	2	20.89	20.81	20.92
		RB75#0	2	2	20.79	20.79	20.84
20M	QPSK	RB1#0	0	0	22.81	22.6	22.59
		RB1#50	0	0	22.86	22.68	22.69
		RB1#99	0	0	22.34	22.37	22.13
		RB50#0	1	1	21.81	21.79	21.68
		RB50#50	1	1	21.73	21.63	21.56
		RB100#0	1	1	21.73	21.68	21.67
	16-QAM	RB1#0	1	1	21.94	22.15	21.74
		RB1#50	1	1	22.05	22.22	22.06
		RB1#99	2	2	21.61	21.83	21.42
		RB50#0	2	2	20.79	20.67	20.55
		RB50#50	2	2	20.62	20.71	20.74
		RB100#0	2	2	20.79	20.69	20.67

LTE Band 26:

Test Bandwidth	Test Modulation	Resource Block & RB offset	Target MPR	Meas MPR	Low Channel (dBm)	Middle Channel (dBm)	High Channel (dBm)
1.4M	QPSK	RB1#0	0	0	22.85	22.93	22.77
		RB1#3	0	0	22.88	23.06	22.67
		RB1#5	0	0	22.9	23.09	22.63
		RB3#0	1	1	22.89	22.9	22.69
		RB3#3	1	1	22.86	23.04	22.62
		RB6#0	1	1	21.86	22.08	21.65
	16-QAM	RB1#0	1	1	21.95	21.92	21.75
		RB1#3	1	1	22.04	22.05	21.91
		RB1#5	1	1	22.01	22.13	21.73
		RB3#0	2	2	21.77	22.21	21.76
		RB3#3	2	2	21.86	22.23	21.77
		RB6#0	2	2	20.83	20.97	20.77
3M	QPSK	RB1#0	0	0	22.96	22.96	22.91
		RB1#8	0	0	22.84	23.02	22.69
		RB1#14	1	1	22.85	22.95	22.71
		RB6#0	1	1	22.36	22.09	21.72
		RB6#9	1	1	21.87	22.13	21.75
		RB15#0	1	1	21.87	21.93	21.72
	16-QAM	RB1#0	1	1	22.03	22.21	22.34
		RB1#8	1	1	22.15	21.97	22.36
		RB1#14	2	2	21.94	22.14	22.34
		RB6#0	2	2	20.83	21.01	20.93
		RB6#9	2	2	20.86	21.17	20.77
		RB15#0	2	2	20.96	21.25	20.89
5M	QPSK	RB1#0	0	0	22.95	23.08	22.86
		RB1#13	0	0	23.03	23.12	22.86
		RB1#24	1	1	22.95	23.05	22.82
		RB15#0	1	1	21.98	22.1	21.89
		RB15#10	1	1	21.9	22.15	21.77
		RB25#0	1	1	21.97	22.05	21.88
	16-QAM	RB1#0	1	1	22.36	22.25	21.79
		RB1#13	1	1	22.22	22.11	21.79
		RB1#24	1	1	22.25	22.09	21.63
		RB15#0	2	2	20.91	21.18	20.85
		RB15#10	2	2	20.88	21.14	20.84
		RB25#0	2	2	20.85	21.08	20.88

Test Bandwidth	Test Modulation	Resource Block & RB offset	Target MPR	Meas MPR	Low Channel (dBm)	Middle Channel (dBm)	High Channel (dBm)
10M	QPSK	RB1#0	0	0	23.12	23.3	23.12
		RB1#25	0	0	22.76	22.94	22.77
		RB1#49	0	0	23.18	23.27	22.97
		RB25#0	1	1	21.92	21.98	21.91
		RB25#25	1	1	21.97	22.24	22.04
		RB50#0	1	1	22.01	22.21	21.99
	16-QAM	RB1#0	1	1	22.23	22.34	22.69
		RB1#25	1	1	21.98	21.92	22.53
		RB1#49	2	2	22.44	22.16	22.45
		RB25#0	2	2	20.99	21.16	21.11
		RB25#25	2	2	21.12	21.22	20.91
		RB50#0	2	2	20.93	21.09	20.94
15M	QPSK	RB1#0	0	0	23.09	23.14	23.12
		RB1#38	0	0	22.98	22.76	22.98
		RB1#74	1	1	23.44	23.37	23.24
		RB36#0	1	1	22.34	22.31	22.23
		RB36#39	1	1	22.02	21.99	21.74
		RB75#0	1	1	22.16	22.05	22.09
	16-QAM	RB1#0	1	1	22.17	22.57	22.7
		RB1#38	1	1	22.08	22.19	22.64
		RB1#74	2	2	22.68	22.85	22.74
		RB36#0	2	2	21.17	21.18	21.27
		RB36#39	2	2	21.02	20.91	20.95
		RB75#0	2	2	21.18	21.02	21.04

LTE Band 41:

Test Bandwidth	Test Modulation	Resource Block & RB offset	Target MPR	Meas MPR	Low Channel (dBm)	2549.5 MHz (dBm)	Middle Channel (dBm)	2636.5 MHz (dBm)	High Channel (dBm)
5M	QPSK	RB1#0	0	0	22.34	22.24	22.12	22.1	22.44
		RB1#13	0	0	22.21	22.11	22.05	22.14	22.43
		RB1#24	1	1	22.11	22.02	21.97	22.1	22.45
		RB15#0	1	1	21.23	20.98	21.25	21.31	21.39
		RB15#10	1	1	21.12	21.09	20.99	21.02	21.36
		RB25#0	1	1	21.17	21.14	21.04	21.18	21.46
	16-QAM	RB1#0	1	1	21.11	21.63	21.57	21.62	21.45
		RB1#13	1	1	21.17	21.29	21.25	21.33	21.44
		RB1#24	1	1	21.18	21.48	21.49	21.52	21.37
		RB15#0	2	2	20.12	20.12	19.99	20.01	20.42
		RB15#10	2	2	20.07	20.01	19.97	19.93	20.31
		RB25#0	2	2	20.21	19.89	19.94	19.92	20.46
10M	QPSK	RB1#0	0	0	22.42	22.42	22.28	22.37	22.78
		RB1#25	0	0	22.22	22.26	22.13	22.13	22.38
		RB1#49	1	1	22.3	22.02	22.07	22.11	22.55
		RB25#0	1	1	21.08	21.04	20.94	20.97	21.38
		RB25#25	1	1	21.04	21.05	20.98	20.94	21.42
		RB50#0	1	1	20.93	21.05	21.06	21.14	21.28
	16-QAM	RB1#0	1	1	21.18	21.56	21.45	21.49	21.89
		RB1#25	1	1	21.03	21.11	21.02	21.07	21.51
		RB1#49	2	2	21.32	21.27	21.18	21.25	21.51
		RB25#0	2	2	20.15	19.98	19.96	20.06	20.58
		RB25#25	2	2	20.09	20.13	20.08	20.08	20.52
		RB50#0	2	2	20.13	20.12	20.07	20.08	20.25
15M	QPSK	RB1#0	0	0	22.12	22.16	22.01	22.16	22.29
		RB1#38	0	0	22.23	22.11	21.99	21.96	22.45
		RB1#74	1	1	22.12	21.84	21.88	21.93	22.28
		RB36#0	1	1	21.14	21.18	21.12	21.09	21.31
		RB36#39	1	1	21.17	20.93	20.95	21.09	21.26
		RB75#0	1	1	21.02	20.91	20.95	20.99	21.24
	16-QAM	RB1#0	1	1	21.02	21.2	21.09	21.24	21.42
		RB1#38	1	1	20.99	21.28	21.19	21.18	21.58
		RB1#74	1	1	20.92	21.19	21.14	21.13	21.34
		RB36#0	2	2	20.15	20.11	20.09	20.12	20.36
		RB36#39	2	2	20.03	20.06	19.96	19.95	20.32
		RB75#0	2	2	20.07	20.08	20.25	20.30	20.26

Test Bandwidth	Test Modulation	Resource Block & RB offset	Target MPR	Meas MPR	Low Channel (dBm)	2549.5 MHz (dBm)	Middle Channel (dBm)	2636.5 MHz (dBm)	High Channel (dBm)
20M	QPSK	RB1#0	0	0	22.12	21.98	21.98	22.06	22.45
		RB1#50	0	0	22.25	22.24	22.29	22.30	22.45
		RB1#99	1	1	21.91	21.94	21.92	21.89	22.11
		RB50#0	1	1	21.05	21.07	21.08	21.11	21.35
		RB50#50	1	1	20.95	21.06	20.97	20.99	21.14
		RB100#0	1	1	21.05	20.92	20.95	21.00	21.27
	16-QAM	RB1#0	1	1	20.95	21.33	21.27	21.38	21.34
		RB1#50	1	1	21.16	21.34	21.31	21.33	21.38
		RB1#99	2	2	21.04	21.35	21.17	21.16	21.07
		RB50#0	2	2	20.16	20.02	20.04	20.11	20.36
		RB50#50	2	2	20.05	19.96	19.85	19.83	20.14
		RB100#0	2	2	20.14	21.98	19.82	19.85	20.32

LTE Band 66:

Test Bandwidth	Test Modulation	Resource Block & RB offset	Target MPR	Meas MPR	Low Channel (dBm)	Middle Channel (dBm)	High Channel (dBm)
1.4M	QPSK	RB1#0	0	0	22.87	22.98	23.17
		RB1#3	0	0	22.71	23.01	23.33
		RB1#5	0	0	22.94	22.95	23.02
		RB3#0	1	1	22.86	23.01	23.13
		RB3#3	1	1	23.05	23.04	23.08
		RB6#0	1	1	21.82	22.17	22.01
	16-QAM	RB1#0	1	1	21.82	22.23	22.09
		RB1#3	1	1	21.96	22.2	22.19
		RB1#5	1	1	21.89	22.08	22.23
		RB3#0	2	2	22.02	21.99	22.26
		RB3#3	2	2	21.78	22.06	22.47
RB6#0	2	2	20.82	20.83	21.1		
3M	QPSK	RB1#0	0	0	22.68	23.23	23.21
		RB1#8	0	0	22.9	22.91	23.2
		RB1#14	1	1	22.96	22.97	23.06
		RB6#0	1	1	21.92	21.94	22.06
		RB6#9	1	1	21.85	21.99	22.45
		RB15#0	1	1	21.76	21.94	22.26
	16-QAM	RB1#0	1	1	22.18	21.9	22.56
		RB1#8	1	1	22.03	22.05	22.76
		RB1#14	2	2	22.06	21.99	22.54
		RB6#0	2	2	20.94	20.92	21.3
		RB6#9	2	2	21.02	21.06	21.24
		RB15#0	2	2	20.89	20.95	21.15
5M	QPSK	RB1#0	0	0	22.96	23.06	23.16
		RB1#13	0	0	22.8	23.17	23.2
		RB1#24	1	1	22.79	22.95	23.06
		RB15#0	1	1	21.94	22.03	22.25
		RB15#10	1	1	22.12	22.03	22.16
		RB25#0	1	1	21.91	22.06	22.21
	16-QAM	RB1#0	1	1	22.33	22.07	22.05
		RB1#13	1	1	22.16	21.93	22.05
		RB1#24	1	1	22.35	22.08	21.96
		RB15#0	2	2	21.25	20.96	21.16
		RB15#10	2	2	21.02	20.98	21.13
		RB25#0	2	2	20.95	21.03	21.19

Test Bandwidth	Test Modulation	Resource Block & RB offset	Target MPR	Meas MPR	Low Channel (dBm)	Middle Channel (dBm)	High Channel (dBm)
10M	QPSK	RB1#0	0	0	22.19	22.24	22.37
		RB1#25	0	0	22.9	22.96	22.97
		RB1#49	0	0	23.41	23.34	23.48
		RB25#0	1	1	21.75	21.94	22.45
		RB25#25	1	1	22.03	22.01	22.27
		RB50#0	1	1	21.91	22.08	22.12
	16-QAM	RB1#0	1	1	21.31	21.21	21.88
		RB1#25	1	1	21.88	22.01	22.74
		RB1#49	2	2	22.48	22.4	23.07
		RB25#0	2	2	20.96	20.98	21.03
		RB25#25	2	2	21.06	21.17	21.39
		RB50#0	2	2	20.92	20.99	21.09
15M	QPSK	RB1#0	0	0	22.78	22.98	22.99
		RB1#38	0	0	22.79	22.73	22.72
		RB1#74	1	1	22.84	22.73	22.86
		RB36#0	1	1	21.67	21.77	21.92
		RB36#39	1	1	21.66	21.66	21.76
		RB75#0	1	1	21.62	21.67	21.8
	16-QAM	RB1#0	1	1	21.87	22.29	22.55
		RB1#38	1	1	21.77	22.21	22.39
		RB1#74	2	2	21.73	22.12	22.33
		RB36#0	2	2	20.75	20.84	20.77
		RB36#39	2	2	20.71	20.78	20.69
		RB75#0	2	2	20.79	20.69	20.75
20M	QPSK	RB1#0	0	0	22.45	22.35	22.38
		RB1#50	0	0	22.93	22.74	22.81
		RB1#99	1	1	23.29	23.07	23.03
		RB50#0	1	1	22.17	22.13	21.92
		RB50#50	1	1	21.61	21.92	21.73
		RB100#0	1	1	21.68	21.61	21.61
	16-QAM	RB1#0	1	1	21.62	21.84	21.87
		RB1#50	1	1	22.14	22.19	22.26
		RB1#99	2	2	22.26	22.63	22.36
		RB50#0	2	2	20.62	20.62	20.84
		RB50#50	2	2	20.87	20.74	21.45
		RB100#0	2	2	20.79	20.83	20.83

LTE Band 71:

Test Bandwidth	Test Modulation	Resource Block & RB offset	Target MPR	Meas MPR	Low Channel (dBm)	Middle Channel (dBm)	High Channel (dBm)
5M	QPSK	RB1#0	0	0	23.31	23.32	23.27
		RB1#13	0	0	23.12	23.02	23.01
		RB1#24	1	1	23.03	22.98	22.92
		RB15#0	1	1	22.06	21.98	22.11
		RB15#10	1	1	21.97	21.94	21.94
		RB25#0	1	1	22.07	22.1	21.96
	16-QAM	RB1#0	1	1	22.18	22.12	22.08
		RB1#13	1	1	22.02	22.01	21.97
		RB1#24	1	1	21.98	22.02	21.92
		RB15#0	2	2	21.11	21.14	21.14
		RB15#10	2	2	20.98	20.93	20.97
		RB25#0	2	2	21.09	21.02	21.13
10M	QPSK	RB1#0	0	0	22.33	22.38	22.51
		RB1#25	0	0	23.08	22.94	22.89
		RB1#49	1	1	23.44	23.33	23.47
		RB25#0	1	1	22.09	22.01	21.97
		RB25#25	1	1	22.14	22.15	22.1
		RB50#0	1	1	22.08	22.08	22.13
	16-QAM	RB1#0	1	1	21.91	21.92	21.9
		RB1#25	1	1	22.61	22.48	22.47
		RB1#49	2	2	23.04	23.02	22.86
		RB25#0	2	2	21.13	21.12	20.98
		RB25#25	2	2	21.21	21.16	21.17
		RB50#0	2	2	20.98	20.96	21.08
15M	QPSK	RB1#0	0	0	22.9	23.01	23.03
		RB1#38	0	0	22.74	22.71	22.62
		RB1#74	1	1	22.81	22.91	22.9
		RB36#0	1	1	21.9	21.88	21.82
		RB36#39	1	1	21.71	21.86	21.72
		RB75#0	1	1	21.82	21.82	21.71
	16-QAM	RB1#0	1	1	22.53	22.54	22.58
		RB1#38	1	1	22.37	22.37	22.43
		RB1#74	1	1	22.33	22.39	22.35
		RB36#0	2	2	20.99	20.96	20.84
		RB36#39	2	2	20.87	20.77	20.82
		RB75#0	2	2	20.86	20.73	20.76

Test Bandwidth	Test Modulation	Resource Block & RB offset	Target MPR	Meas MPR	Low Channel (dBm)	Middle Channel (dBm)	High Channel (dBm)
20M	QPSK	RB1#0	0	0	23.17	23.07	23.13
		RB1#50	0	0	22.88	22.91	22.79
		RB1#99	1	1	23.08	23.01	22.99
		RB50#0	1	1	22.18	22.12	22.28
		RB50#50	1	1	21.9	21.73	21.87
		RB100#0	1	1	21.84	21.73	21.66
	16-QAM	RB1#0	1	1	21.86	21.93	21.82
		RB1#50	1	1	22.09	22.15	22.26
		RB1#99	2	2	22.35	22.31	22.32
		RB50#0	2	2	20.72	20.72	20.75
		RB50#50	2	2	20.8	20.8	20.74
		RB100#0	2	2	20.67	20.78	20.77

WLAN 2.4G:

Mode	Channel frequency (MHz)	DataRate	Duty cycle (%)	RF Output Power (dBm)
802.11b	2412	1Mbps	99.04%	17.75
	2437			17.61
	2462			17.28
802.11g	2412	6Mbps	98.1%	13.94
	2437			13.9
	2462			13.96
802.11n ht20	2412	MCS0	97.96%	13.14
	2437			13.21
	2462			12.55
802.11n ht40	2422	MCS0	95%	12.99
	2437			12.86
	2452			12.91

Wi-Fi 5.2G:

Mode	Channel frequency (MHz)	Duty cycle (%)	RF Output Power (dBm)
802.11a	5180	98.1	14.85
	5200		14.62
	5240		13.94
802.11n ht20	5180	97.97	14.57
	5200		14.29
	5240		13.74
802.11n ht40	5190	95.92	13.11
	5230		14.79
802.11ac v ht80	5210	92	13.27

Wi-Fi 5.3G:

Mode	Channel frequency (MHz)	Duty cycle (%)	RF Output Power (dBm)
802.11a	5260	98.1	15.49
	5280		15.25
	5320		15.35
802.11n ht20	5260	97.97	14.6
	5280		15.03
	5320		14.39
802.11n ht40	5270	95.92	15.45
	5310		15.19
802.11ac v ht80	5290	92	13.39

Wi-Fi 5.6G:

Mode	Channel frequency (MHz)	Duty cycle (%)	RF Output Power (dBm)
802.11a	5500	98.1	14.36
	5580		14.91
	5700		15.63
802.11n ht20	5500	97.97	13.99
	5580		13.71
	5700		14.32
802.11n ht40	5510	95.92	15.54
	5550		14.75
	5670		15.45
802.11ac v ht80	5530	92	13.29
	5610		13.31

Wi-Fi 5.8G:

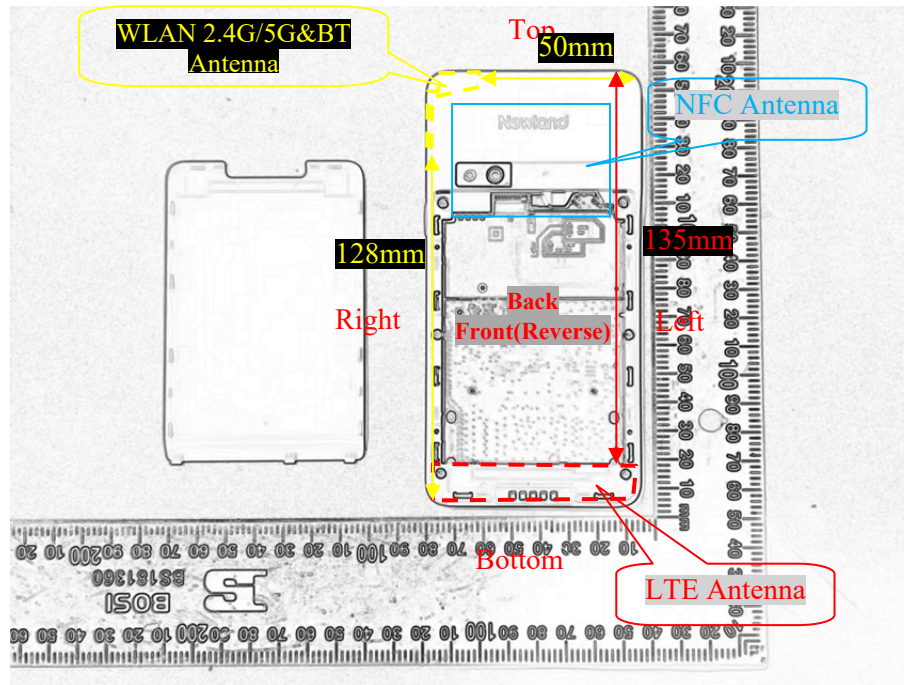
Mode	Channel frequency (MHz)	Duty cycle (%)	RF Output Power (dBm)
802.11a	5745	98.1	15.66
	5785		15.29
	5825		15.43
802.11n ht20	5745	97.97	15.29
	5785		15.03
	5825		14.81
802.11n ht40	5755	95.92	15.64
	5795		15.61
802.11ac v ht80	5755	92	14.87

Bluetooth:

Mode	Channel frequency (MHz)	Duty cycle (%)	RF Output Power (dBm)
BDR(GFSK)	2402	76.86	7.31
	2441		8.59
	2480		9.13
EDR($\pi/4$ -DQPSK)	2402	77.07	8.67
	2441		10.36
	2480		10.22
EDR(8DPSK)	2402	77.07	8.65
	2441		9.64
	2480		10.16
BLE	2402	61.9	0.38
	2440		1.25
	2480		1.23

7. Standalone SAR test exclusion considerations

Antennas Location:



7.1 Antenna Distance To Edge

Antenna Distance To Edge(mm)						
Antenna	Back	Front	Left	Right	Top	Bottom
WWANLTE Antenna	< 5	< 5	< 5	< 5	135	< 5
WLAN 2.4G/5G&BT Antenna	< 5	< 5	50	< 5	< 5	128

7.2 Standalone SAR test exclusion considerations

Mode	Frequency (MHz)	Output Power (dBm)	Output Power (mW)	Distance (mm)	Calculated value	Threshold (1-g)	SAR Test Exclusion
WLAN 2.4G	2462	17.9	61.66	0	19.3	3.0	NO
WLAN5.2G	5240	15	31.62	0	14.5	3.0	NO
WLAN5.3G	5320	15.3	33.88	0	15.6	3.0	NO
WLAN5.6G	5700	16.5	44.67	0	21.3	3.0	NO
WLAN5.8G	5825	16	39.81	0	19.2	3.0	NO
Bluetooth	2480	10.5	11.22	0	3.5	3.0	NO

Note: The bluetooth based peak power for calculation.

NOTE:

The 1-g and 10-g SAR test exclusion thresholds for 100 MHz to 6 GHz at test separation distances ≤ 50 mm are determined by:

$[(\text{max. power of channel, including tune-up tolerance, mW}) / (\text{min. test separation distance, mm})] \cdot$

$[\sqrt{f(\text{GHz})}] \leq 3.0$ for 1-g SAR and ≤ 7.5 for 10-g extremity SAR, where

1. $f(\text{GHz})$ is the RF channel transmit frequency in GHz.

2. Power and distance are rounded to the nearest mW and mm before calculation.

3. The result is rounded to one decimal place for comparison.

4. When the minimum test separation distance is < 5 mm, a distance of 5 mm is applied to determine SAR test Exclusion.

Measurement Result:

For NFC, the power of EUT: E Field@3m is 75.67dBuV/m = -19.53 dBm(0.011mW)

Note: $E[\text{dB}\mu\text{V}/\text{m}] = \text{EIRP}[\text{dBm}] + 95.2$ for $d = 3$ m.

SAR test exclusion threshold for NFC(13.56MHz) separation distance < 50 mm

$$= [474 * (1 + \log(100/f(\text{MHz}))) / 2]$$

$$= 443\text{mW}$$

$$> 0.011\text{mW}$$

Conclusion:

The NFC SAR evaluation can be exempted.

7.3 SAR test exclusion for the EUT edge considerations Result

Antenna Distance To Edge(mm)						
Mode	Back	Front	Left	Right	Top	Bottom
Bluetooth	Required	Required	Exclusion	Required	Required	Exclusion
Wi-Fi 2.4G/5G	Required	Required	Exclusion	Required	Required	Exclusion
WWANLTE	Required	Required	Required	Required	Exclusion	Required

Note:

Required: The distance to Edge is less than 25mm, testing is required.

Exclusion: The distance to Edge is more than 25 mm, testing is not required.

Extremity Exposure Considerations

Per KDB 648474 D04 D04v01r03, this device is considered a “Phablet” since the diagonal dimension is > 160 mm and < 200 mm, when hotspot mode applies, extremity SAR is required only for the surfaces and edges with hotspot mode scaled to the maximum output power (with tolerance is 1g SAR $> 1.2\text{W}/\text{kg}$)

Extremity Exposure Condition		
Worst Mode	Hotspot SAR value	Extremity Condition Test
WLAN 5.3G	1.09W/kg@1g	Exclusion

8. SAR MEASUREMENT RESULTS

This page summarizes the results of the performed dosimetric evaluation.

8.1 SAR Test Data

Environmental Conditions

Temperature:	22.5-23.7℃	22.9-24.3℃	23.2-24.7℃	22.5-23.9℃
Relative Humidity:	56%	56%	51%	59%
ATM Pressure:	99.8 kPa	99.9kPa	100.3kPa	100.3kPa
Test Date:	2023/06/14	2023/06/16	2023/06/17	2023/06/18
Temperature:	23.1-24.4℃	22.9-24.1℃	20.4-21.5℃	/
Relative Humidity:	49%	52%	39%	/
ATM Pressure:	100.1kPa	100.5 kPa	100.5 kPa	/
Test Date:	2023/06/19	2023/6/20	2023/06/25	/

Testing was performed by Carl Chen, LeoLu, AixleeLi.

LTE Band 7:

EUT Position	Battery	Frequency (MHz)	Bandwidth (MHz)	Test Mode	Max. Meas. Power (dBm)	Max. Rated Power (dBm)	1g SAR (W/kg)			
							Scaled Factor	Meas. SAR	Scaled SAR	Plot
Body Front (10mm)	Thin Battery	2510	20	1RB	/	/	/	/	/	/
		2535	20	1RB	22.41	22.6	1.045	0.246	0.26	1#
		2560	20	1RB	/	/	/	/	/	/
		2535	20	50%RB	21.54	22.6	1.276	0.2	0.26	2#
Body Back (10mm)	Thin Battery	2510	20	1RB	/	/	/	/	/	/
		2535	20	1RB	22.41	22.6	1.045	0.18	0.19	3#
		2560	20	1RB	/	/	/	/	/	/
		2535	20	50%RB	21.54	22.6	1.276	0.14	0.18	4#
Body Left (10mm)	Thin Battery	2510	20	1RB	/	/	/	/	/	/
		2535	20	1RB	22.41	22.6	1.045	0.052	0.05	5#
		2560	20	1RB	/	/	/	/	/	/
		2535	20	50%RB	21.54	22.6	1.276	0.045	0.06	6#
Body Right (10mm)	Thin Battery	2510	20	1RB	/	/	/	/	/	/
		2535	20	1RB	22.41	22.6	1.045	0.392	0.41	7#
		2560	20	1RB	/	/	/	/	/	/
		2535	20	50%RB	21.54	22.6	1.276	0.307	0.39	8#
	Thick Battery	2535	20	1RB	22.41	22.6	1.045	0.339	0.35	117#
Body Bottom (10mm)	Thin Battery	2510	20	1RB	/	/	/	/	/	/
		2535	20	1RB	22.41	22.6	1.045	0.134	0.14	9#
		2560	20	1RB	/	/	/	/	/	/
		2535	20	50%RB	21.54	22.6	1.276	0.11	0.14	10#

The data above was performed on 2023/06/17

LTEBand 12&17:

EUT Position	Battery	Frequency (MHz)	Bandwidth (MHz)	Test Mode	Max. Meas. Power (dBm)	Max. Rated Power (dBm)	1g SAR (W/kg)			
							Scaled Factor	Meas. SAR	Scaled SAR	Plot
Body Front (10mm)	Thin Battery	704	10	1RB	/	/	/	/	/	/
		707.5	10	1RB	23.32	23.5	1.042	0.108	0.11	11#
		711	10	1RB	/	/	/	/	/	/
		707.5	10	50%RB	22.25	23.5	1.334	0.052	0.07	12#
	Thick Battery	707.5	10	1RB	23.32	23.5	1.042	0.085	0.09	118#
Body Back (10mm)	Thin Battery	704	10	1RB	/	/	/	/	/	/
		707.5	10	1RB	23.32	23.5	1.042	0.031	0.03	13#
		711	10	1RB	/	/	/	/	/	/
		707.5	10	50%RB	22.25	23.5	1.334	0.025	0.03	14#
Body Left (10mm)	Thin Battery	704	10	1RB	/	/	/	/	/	/
		707.5	10	1RB	23.32	23.5	1.042	0.059	0.06	15#
		711	10	1RB	/	/	/	/	/	/
		707.5	10	50%RB	22.25	23.5	1.334	0.049	0.07	16#
Body Right (10mm)	Thin Battery	704	10	1RB	/	/	/	/	/	/
		707.5	10	1RB	23.32	23.5	1.042	0.039	0.04	17#
		711	10	1RB	/	/	/	/	/	/
		707.5	10	50%RB	22.25	23.5	1.334	0.032	0.04	18#
Body Bottom (10mm)	Thin Battery	704	10	1RB	/	/	/	/	/	/
		707.5	10	1RB	23.32	23.5	1.042	0.011	0.01	19#
		711	10	1RB	/	/	/	/	/	/
		707.5	10	50%RB	22.25	23.5	1.334	0.009	0.01	20#

The data above was performed on 2023/06/18

Note: The E-UTRA Operating Band 17 is a subset of band 12, and they are same in modulation type and rated output power, therefore, they were considered as one frequency band during SAR measurement.

LTEBand 13:

EUT Position	Battery	Frequency (MHz)	Bandwidth (MHz)	Test Mode	Max. Meas. Power (dBm)	Max. Rated Power (dBm)	1g SAR (W/kg)			
							Scaled Factor	Meas. SAR	Scaled SAR	Plot
Body Front (10mm)	Thin Battery	782	10	1RB	23.54	23.6	1.014	0.044	0.04	21#
		782	10	50%RB	22.56	23.6	1.271	0.039	0.05	22#
Body Back (10mm)	Thin Battery	782	10	1RB	23.54	23.6	1.014	0.105	0.11	23#
		782	10	50%RB	22.56	23.6	1.271	0.086	0.11	24#
	Thick Battery	782	10	1RB	23.54	23.6	1.014	0.185	0.19	119#
Body Left (10mm)	Thin Battery	782	10	1RB	23.54	23.6	1.014	0.087	0.09	25#
		782	10	50%RB	22.56	23.6	1.271	0.072	0.09	26#
Body Right (10mm)	Thin Battery	782	10	1RB	23.54	23.6	1.014	0.051	0.05	27#
		782	10	50%RB	22.56	23.6	1.271	0.042	0.05	28#
Body Bottom (10mm)	Thin Battery	782	10	1RB	23.54	23.6	1.014	0.029	0.03	29#
		782	10	50%RB	22.56	23.6	1.271	0.026	0.03	30#

The data above was performed on 2023/06/20

LTEBand 14:

EUT Position	Battery	Frequency (MHz)	Bandwidth (MHz)	Test Mode	Max. Meas. Power (dBm)	Max. Rated Power (dBm)	1g SAR (W/kg)			
							Scaled Factor	Meas. SAR	Scaled SAR	Plot
Body Front (10mm)	Thin Battery	793	10	1RB	19.97	20.1	1.03	0.057	0.06	31#
		793	10	50%RB	18.96	20.1	1.3	0.046	0.06	32#
Body Back (10mm)	Thin Battery	793	10	1RB	19.97	20.1	1.03	0.127	0.13	33#
		793	10	50%RB	18.96	20.1	1.3	0.099	0.13	34#
	Thick Battery	793	10	1RB	19.97	20.1	1.03	0.189	0.19	120#
Body Left (10mm)	Thin Battery	793	10	1RB	19.97	20.1	1.03	0.101	0.1	35#
		793	10	50%RB	18.96	20.1	1.3	0.08	0.1	36#
Body Right (10mm)	Thin Battery	793	10	1RB	19.97	20.1	1.03	0.078	0.08	37#
		793	10	50%RB	18.96	20.1	1.3	0.062	0.08	38#
Body Bottom (10mm)	Thin Battery	793	10	1RB	19.97	20.1	1.03	0.035	0.04	39#
		793	10	50%RB	18.96	20.1	1.3	0.03	0.04	40#

The data above was performed on 2023/06/20

LTE Band 25&2:

EUT Position	Battery	Frequency (MHz)	Bandwidth (MHz)	Test Mode	Max. Meas. Power (dBm)	Max. Rated Power (dBm)	1g SAR (W/kg)			
							Scaled Factor	Meas. SAR	Scaled SAR	Plot
Body Front (10mm)	Thin Battery	1860	20	1RB	/	/	/	/	/	/
		1882.5	20	1RB	22.68	23.1	1.102	0.226	0.25	41#
		1905	20	1RB	/	/	/	/	/	/
		1882.5	20	50%RB	21.79	23.1	1.352	0.175	0.24	42#
Body Back (10mm)	Thin Battery	1860	20	1RB	/	/	/	/	/	/
		1882.5	20	1RB	22.68	23.1	1.102	0.39	0.43	43#
		1905	20	1RB	/	/	/	/	/	/
		1882.5	20	50%RB	21.79	23.1	1.352	0.303	0.41	44#
	Thick Battery	1882.5	20	1RB	22.68	23.1	1.102	0.342	0.38	121#
Body Left (10mm)	Thin Battery	1860	20	1RB	/	/	/	/	/	/
		1882.5	20	1RB	22.68	23.1	1.102	0.06	0.07	45#
		1905	20	1RB	/	/	/	/	/	/
		1882.5	20	50%RB	21.79	23.1	1.352	0.05	0.07	46#
Body Right (10mm)	Thin Battery	1860	20	1RB	/	/	/	/	/	/
		1882.5	20	1RB	22.68	23.1	1.102	0.347	0.38	47#
		1905	20	1RB	/	/	/	/	/	/
		1882.5	20	50%RB	21.79	23.1	1.352	0.27	0.37	48#
Body Bottom (10mm)	Thin Battery	1860	20	1RB	/	/	/	/	/	/
		1882.5	20	1RB	22.68	23.1	1.102	0.257	0.28	49#
		1905	20	1RB	/	/	/	/	/	/
		1882.5	20	50%RB	21.79	23.1	1.352	0.2	0.27	50#

The data above was performed on 2023/06/25

Note: The E-UTRA Operating Band 2 is a subset of band 25, and they are same in modulation type and rated output power, therefore, they were considered as one frequency band during SAR measurement.

LTEBand 26&5:

EUT Position	Battery	Frequency (MHz)	Bandwidth (MHz)	Test Mode	Max. Meas. Power (dBm)	Max. Rated Power (dBm)	1g SAR (W/kg)			
							Scaled Factor	Meas. SAR	Scaled SAR	Plot
Body Front (10mm)	Thin Battery	819	10	1RB	/	/	/	/	/	/
		831.5	15	1RB	23.37	23.5	1.03	0.066	0.07	51#
		841.5	15	1RB	/	/	/	/	/	/
		831.5	15	50%RB	22.31	23.5	1.315	0.056	0.07	52#
Body Back (10mm)	Thin Battery	819	10	1RB	/	/	/	/	/	/
		831.5	15	1RB	23.37	23.5	1.03	0.139	0.14	53#
		841.5	15	1RB	/	/	/	/	/	/
		831.5	15	50%RB	22.31	23.5	1.315	0.104	0.14	54#
	Thick Battery	831.5	15	1RB	23.37	23.5	1.03	0.094	0.1	122#
Body Left (10mm)	Thin Battery	819	10	1RB	/	/	/	/	/	/
		831.5	15	1RB	23.37	23.5	1.03	0.139	0.14	55#
		841.5	15	1RB	/	/	/	/	/	/
		831.5	15	50%RB	22.31	23.5	1.315	0.11	0.14	56#
Body Right (10mm)	Thin Battery	819	10	1RB	/	/	/	/	/	/
		831.5	15	1RB	23.37	23.5	1.03	0.103	0.11	57#
		841.5	15	1RB	/	/	/	/	/	/
		831.5	15	50%RB	22.31	23.5	1.315	0.081	0.11	58#
Body Bottom (10mm)	Thin Battery	819	10	1RB	/	/	/	/	/	/
		831.5	15	1RB	23.37	23.5	1.03	0.068	0.07	59#
		841.5	15	1RB	/	/	/	/	/	/
		831.5	15	50%RB	22.31	23.5	1.315	0.056	0.07	60#

The data above was performed on 2023/06/14

Note: The E-UTRA Operating Band 5 is a subset of band 26, and they are same in modulation type and rated output power, therefore, they were considered as one frequency band during SAR measurement.

LTE Band 41:

EUT Position	Battery	Frequency (MHz)	Bandwidth (MHz)	Test Mode	Max. Meas. Power (dBm)	Max. Rated Power (dBm)	1g SAR (W/kg)			
							Scaled Factor	Meas. SAR	Scaled SAR	Plot
Body Front (10mm)	Thin Battery	2506	20	1RB	/	/	/	/	/	/
		2549.5	20	1RB	/	/	/	/	/	/
		2593	20	1RB	22.29	22.9	1.151	0.118	0.14	61#
		2636.5	20	1RB	/	/	/	/	/	/
		2680	20	1RB	/	/	/	/	/	/
		2593	20	50%RB	21.08	22.9	1.521	0.089	0.14	62#
Body Back (10mm)	Thin Battery	2506	20	1RB	/	/	/	/	/	/
		2549.5	20	1RB	/	/	/	/	/	/
		2593	20	1RB	22.29	22.9	1.151	0.155	0.18	63#
		2636.5	20	1RB	/	/	/	/	/	/
		2680	20	1RB	/	/	/	/	/	/
		2593	20	50%RB	21.08	22.9	1.521	0.123	0.19	64#
Body Left (10mm)	Thin Battery	2506	20	1RB	/	/	/	/	/	/
		2549.5	20	1RB	/	/	/	/	/	/
		2593	20	1RB	22.29	22.9	1.151	0.053	0.06	65#
		2636.5	20	1RB	/	/	/	/	/	/
		2680	20	1RB	/	/	/	/	/	/
		2593	20	50%RB	21.08	22.9	1.521	0.05	0.08	66#
Body Right (10mm)	Thin Battery	2506	20	1RB	/	/	/	/	/	/
		2549.5	20	1RB	/	/	/	/	/	/
		2593	20	1RB	22.29	22.9	1.151	0.203	0.23	67#
		2636.5	20	1RB	/	/	/	/	/	/
		2680	20	1RB	/	/	/	/	/	/
		2593	20	50%RB	21.08	22.9	1.521	0.164	0.25	68#
	Thick Battery	2593	20	1RB	22.29	22.9	1.151	0.128	0.15	123#
Body Bottom (10mm)	Thin Battery	2506	20	1RB	/	/	/	/	/	/
		2549.5	20	1RB	/	/	/	/	/	/
		2593	20	1RB	22.29	22.9	1.151	0.067	0.08	69#
		2636.5	20	1RB	/	/	/	/	/	/
		2680	20	1RB	/	/	/	/	/	/
		2593	20	50%RB	21.08	22.9	1.521	0.057	0.09	70#

The data above was performed on 2023/06/18

Note:

1. The frequency range of LTE Band 41 is 2496~2690MHz. Per KDB 447498 D01, according to the following formula Calculate N_c is 5.

KDB procedures, the following should be applied to determine the number of required test channels. The test channels should be evenly spread across the transmission frequency band of each wireless mode.¹⁴

$$N_c = \text{Round} \left\{ \left[100(f_{\text{high}} - f_{\text{low}}) / f_c \right]^{0.5} \times (f_c / 100)^{0.2} \right\},$$

where

- N_c is the number of test channels, rounded to the nearest integer,
- f_{high} and f_{low} are the highest and lowest channel frequencies within the transmission band,
- f_c is the mid-band channel frequency,
- all frequencies are in MHz.

2. The power class 3 used for LTE Band 41 SAR testing.

LTEBand66&4:

EUT Position	Battery	Frequency (MHz)	Bandwidth (MHz)	Test Mode	Max. Meas. Power (dBm)	Max. Rated Power (dBm)	1g SAR (W/kg)			
							Scaled Factor	Meas. SAR	Scaled SAR	Plot
Body Front (10mm)	Thin Battery	1720	20	1RB	/	/	/	/	/	/
		1745	20	1RB	23.07	23.6	1.13	0.31	0.35	71#
		1770	20	1RB	/	/	/	/	/	/
		1745	20	50%RB	22.13	23.6	1.403	0.242	0.34	72#
Body Back (10mm)	Thin Battery	1720	20	1RB	/	/	/	/	/	/
		1745	20	1RB	23.07	23.6	1.13	0.298	0.34	73#
		1770	20	1RB	/	/	/	/	/	/
		1745	20	50%RB	22.13	23.6	1.403	0.266	0.37	74#
Body Left (10mm)	Thin Battery	1720	20	1RB	/	/	/	/	/	/
		1745	20	1RB	23.07	23.6	1.13	0.073	0.08	75#
		1770	20	1RB	/	/	/	/	/	/
		1745	20	50%RB	22.13	23.6	1.403	0.06	0.08	76#
Body Right (10mm)	Thin Battery	1720	20	1RB	/	/	/	/	/	/
		1745	20	1RB	23.07	23.6	1.13	0.407	0.46	77#
		1770	20	1RB	/	/	/	/	/	/
		1745	20	50%RB	22.13	23.6	1.403	0.325	0.46	78#
	Thick Battery	1745	20	1RB	23.07	23.6	1.13	0.419	0.47	124#
Body Bottom (10mm)	Thin Battery	1720	20	1RB	/	/	/	/	/	/
		1745	20	1RB	23.07	23.6	1.13	0.356	0.4	79#
		1770	20	1RB	/	/	/	/	/	/
		1745	20	50%RB	22.13	23.6	1.403	0.321	0.45	80#

The data above was performed on 2023/06/16

Note: The E-UTRA Operating Band 4 is a subset of band 66, and they are same in modulation type and rated output power, therefore, they were considered as one frequency band during SAR measurement.

LTEBand 71:

EUT Position	Battery	Frequency (MHz)	Bandwidth (MHz)	Test Mode	Max. Meas. Power (dBm)	Max. Rated Power (dBm)	1g SAR (W/kg)			
							Scaled Factor	Meas. SAR	Scaled SAR	Plot
Body Front (10mm)	Thin Battery	673	20	1RB	/	/	/	/	/	/
		680.5	20	1RB	23.07	23.5	1.104	0.038	0.04	81#
		688	20	1RB	/	/	/	/	/	/
		680.5	20	50%RB	22.12	23.5	1.374	0.027	0.04	82#
Body Back (10mm)	Thin Battery	673	20	1RB	/	/	/	/	/	/
		680.5	20	1RB	23.07	23.5	1.104	0.055	0.06	83#
		688	20	1RB	/	/	/	/	/	/
		680.5	20	50%RB	22.12	23.5	1.374	0.031	0.04	84#
Body Left (10mm)	Thin Battery	673	20	1RB	/	/	/	/	/	/
		680.5	20	1RB	23.07	23.5	1.104	0.056	0.06	85#
		688	20	1RB	/	/	/	/	/	/
		680.5	20	50%RB	22.12	23.5	1.374	0.051	0.07	86#
	Thick Battery	680.5	20	1RB	23.07	23.5	1.104	0.064	0.07	125#
Body Right (10mm)	Thin Battery	673	20	1RB	/	/	/	/	/	/
		680.5	20	1RB	23.07	23.5	1.104	0.047	0.05	87#
		688	20	1RB	/	/	/	/	/	/
		680.5	20	50%RB	22.12	23.5	1.374	0.026	0.04	88#
Body Bottom (10mm))	Thin Battery	673	20	1RB	/	/	/	/	/	/
		680.5	20	1RB	23.07	23.5	1.104	0.012	0.01	89#
		688	20	1RB	/	/	/	/	/	/
		680.5	20	50%RB	22.12	23.5	1.374	0.009	0.01	90#

The data above was performed on 2023/06/18

Note:

1. When the 1-g SAR is ≤ 0.8 W/Kg, testing for other channels are optional.
2. SAR for LTE band exposure configurations is measured according to the procedures of KDB 941225 D05 SAR for LTE Devices v02.
3. KDB941225D05-SAR for higher order modulation is required only when the highest maximum output power for the configuration in the higher order modulation is > 0.5 dB higher than the same configuration in QPSK or when the reported SAR for the QPSK configuration is > 1.45 W/kg
4. KDB941225D05-For QPSK with 100% RB allocation, when the reported SAR measured for the Highest output power channel is < 1.45 W/kg, tests for the remaining required test channels are optional.
5. KDB941225D05- For QPSK with 100% RB allocation, SAR is not required when the highest maximum output power for 100 % RB allocation is less than the highest maximum output power in 50% and 1 RB allocations and the highest reported SAR for 1 RB and 50% RB allocation are ≤ 0.8 W/kg.
6. KDB941225D05- Start with the largest channel bandwidth and measure SAR for QPSK with 1 RB allocation, using the RB offset and required test channel combination with the highest maximum output power among RB offset the upper edge, middle and lower edge of each required test channel.
7. KDB941225D05- other channel bandwidths SAR test is required when the highest maximum output power of a configuration requiring testing in the smaller channel bandwidth is > 0.5 dB higher than the equivalent channel configurations in the largest channel bandwidth configuration or the reported SAR of a configuration for the largest channel bandwidth is > 1.45 W/kg.
8. Worst case SAR for 50% RB allocation is selected to be tested.

WLAN2.4G:

EUT Position	Battery	Frequency (MHz)	Test Mode	Max. Meas. Power (dBm)	Max. Rated Power (dBm)	1g SAR (W/kg)			
						Scaled Factor	Meas. SAR	Scaled SAR	Plot
Body Front (10mm)	Thin Battery	2412	802.11b	/	/	/	/	/	/
		2437	802.11b	17.61	17.9	1.069	0.236	0.25	91#
		2462	802.11b	/	/	/	/	/	/
	Thick Battery	2437	802.11b	17.61	17.9	1.069	0.242	0.26	126#
Body Back (10mm)	Thin Battery	2412	802.11b	/	/	/	/	/	/
		2437	802.11b	17.61	17.9	1.069	0.114	0.12	92#
		2462	802.11b	/	/	/	/	/	/
Body Right (10mm)	Thin Battery	2412	802.11b	/	/	/	/	/	/
		2437	802.11b	17.61	17.9	1.069	0.205	0.22	93#
		2462	802.11b	/	/	/	/	/	/
Body Top (10mm)	Thin Battery	2412	802.11b	/	/	/	/	/	/
		2437	802.11b	17.61	17.9	1.069	0.205	0.22	94#
		2462	802.11b	/	/	/	/	/	/

The data above was performed on 2023/06/17

Note:

1. When the SAR value is less than half of the limit, testing for other channels are optional.
2. When SAR or MPE is not measured at the maximum power level allowed for production units, the results must be scaled to the maximum tune-up tolerance limit according to the power applied to the individual channels tested to determine compliance.
3. KDB 248227 D01-SAR measurement is not required for 2.4 GHz OFDM(802.11g/n) when the highest reported SAR for DSSS(802.11b) is ≤ 1.2 W/kg, and the output power for DSSS is not less than that for OFDM.

WLAN5.2G:

EUT Position	Battery	Frequency (MHz)	Test Mode	Max. Meas. Power (dBm)	Max. Rated Power (dBm)	1g SAR (W/kg)			
						Scaled Factor	Meas. SAR	Scaled SAR	Plot
Body Front (10mm)	Thin Battery	5180	802.11a	/	/	/	/	/	/
		5200	802.11a	14.62	15	1.091	0.086	0.09	95#
		5240	802.11a	/	/	/	/	/	/
Body Back (10mm)	Thin Battery	5180	802.11a	/	/	/	/	/	/
		5200	802.11a	14.62	15	1.091	0.413	0.45	96#
		5240	802.11a	/	/	/	/	/	/
Body Right (10mm)	Thin Battery	5180	802.11a	/	/	/	/	/	/
		5200	802.11a	14.62	15	1.091	0.497	0.54	97#
		5240	802.11a	/	/	/	/	/	/
	Thick Battery	5200	802.11a	14.62	15	1.091	0.481	0.52	127#
Body Top (10mm)	Thin Battery	5180	802.11a	/	/	/	/	/	/
		5200	802.11a	14.62	15	1.091	0.128	0.14	98#
		5240	802.11a	/	/	/	/	/	/

The data above was performed on 2023/06/19

WLAN5.3G:

EUT Position	Battery	Frequency (MHz)	Test Mode	Max. Meas. Power (dBm)	Max. Rated Power (dBm)	1g SAR (W/kg)			
						Scaled Factor	Meas. SAR	Scaled SAR	Plot
Body Front (10mm)	Thin Battery	5260	802.11a	/	/	/	/	/	/
		5280	802.11a	15.25	15.6	1.035	0.186	0.2	99#
		5320	802.11a	/	/	/	/	/	/
Body Back (10mm)	Thin Battery	5260	802.11a	/	/	/	/	/	/
		5280	802.11a	15.25	15.6	1.035	0.534	0.58	100#
		5320	802.11a	/	/	/	/	/	/
Body Right (10mm)	Thin Battery	5260	802.11a	15.49	15.6	1.086	0.993	1.02	101#
		5280	802.11a	15.25	15.6	1.035	0.899	0.97	102#
		5320	802.11a	15.35	15.6	1.059	1.03	1.09	103#
	Thick Battery	5320	802.11a	15.35	15.6	1.059	0.997	1.06	128#
Body Top (10mm)	Thin Battery	5260	802.11a	/	/	/	/	/	/
		5280	802.11a	15.25	15.6	1.035	0.163	0.18	104#
		5320	802.11a	/	/	/	/	/	/

The data above was performed on 2023/06/19

WLAN5.6G:

EUT Position	Battery	Frequency (MHz)	Test Mode	Max. Meas. Power (dBm)	Max. Rated Power (dBm)	1g SAR (W/kg)			
						Scaled Factor	Meas. SAR	Scaled SAR	Plot
Body Front (10mm)	Thin Battery	5500	802.11a	/	/	/	/	/	/
		5580	802.11a	14.91	15.7	1.199	0.132	0.16	105#
		5700	802.11a	/	/	/	/	/	/
Body Back (10mm)	Thin Battery	5500	802.11a	/	/	/	/	/	/
		5580	802.11a	14.91	15.7	1.199	0.373	0.45	106#
		5700	802.11a	/	/	/	/	/	/
	Thick Battery	5580	802.11a	14.91	15.7	1.199	0.386	0.46	129#
Body Right (10mm)	Thin Battery	5500	802.11a	/	/	/	/	/	/
		5580	802.11a	14.91	15.7	1.199	0.333	0.4	107#
		5700	802.11a	/	/	/	/	/	/
Body Top (10mm)	Thin Battery	5500	802.11a	/	/	/	/	/	/
		5580	802.11a	14.91	15.7	1.199	0.176	0.21	108#
		5700	802.11a	/	/	/	/	/	/

The data above was performed on 2023/06/19

WLAN5.8G:

EUT Position	Battery	Frequency (MHz)	Test Mode	Max. Meas. Power (dBm)	Max. Rated Power (dBm)	1g SAR (W/kg)			
						Scaled Factor	Meas. SAR	Scaled SAR	Plot
Body Front (10mm)	Thin Battery	5745	802.11a	/	/	/	/	/	/
		5785	802.11a	15.29	15.8	1.125	0.119	0.13	103#
		5825	802.11a	/	/	/	/	/	/
Body Back (10mm)	Thin Battery	5745	802.11a	/	/	/	/	/	/
		5785	802.11a	15.29	15.8	1.125	0.198	0.22	104#
		5825	802.11a	/	/	/	/	/	/
Body Right (10mm)	Thin Battery	5745	802.11a	/	/	/	/	/	/
		5785	802.11a	15.29	15.8	1.125	0.168	0.19	105#
		5825	802.11a	/	/	/	/	/	/
Body Top (10mm)	Thin Battery	5745	802.11a	/	/	/	/	/	/
		5785	802.11a	15.29	15.8	1.125	0.134	0.15	106#
		5825	802.11a	/	/	/	/	/	/

The data above was performed on 2023/06/19

Note:

1. When the SAR value is less than half of the limit, testing for other channels are optional.
2. When SAR or MPE is not measured at the maximum power level allowed for production units, the results must be scaled to the maximum tune-up tolerance limit according to the power applied to the individual channels tested to determine compliance.
3. For 802.11a mode power is the largest among 802.11a/n20/n40/ ac80, 802.11a mode as initial test configuration is selected to test.

Bluetooth :

EUT Position	Battery	Frequency (MHz)	Test Mode	Max. Meas. Power (dBm)	Max. Rated Power (dBm)	1g SAR (W/kg)			
						Scaled Factor	Meas. SAR	Scaled SAR	Plot
Body Front (10mm)	Thin Battery	2402	$\pi/4$ -DQPSK	/	/	/	/	/	/
		2441	$\pi/4$ -DQPSK	10.36	10.5	1.033	0.03	0.03	107#
		2480	$\pi/4$ -DQPSK	/	/	/	/	/	/
	Thick Battery	2441	$\pi/4$ -DQPSK	10.36	10.5	1.033	0.028	0.03	131#
Body Back (10mm)	Thin Battery	2402	$\pi/4$ -DQPSK	/	/	/	/	/	/
		2441	$\pi/4$ -DQPSK	10.36	10.5	1.033	0.015	0.02	108#
		2480	$\pi/4$ -DQPSK	/	/	/	/	/	/
Body Right (10mm)	Thin Battery	2402	$\pi/4$ -DQPSK	/	/	/	/	/	/
		2441	$\pi/4$ -DQPSK	10.36	10.5	1.033	0.017	0.02	109#
		2480	$\pi/4$ -DQPSK	/	/	/	/	/	/
Body Top (10mm)	Thin Battery	2402	$\pi/4$ -DQPSK	/	/	/	/	/	/
		2441	$\pi/4$ -DQPSK	10.36	10.5	1.033	0.021	0.02	110#
		2480	$\pi/4$ -DQPSK	/	/	/	/	/	/

The data above was performed on 2023/06/17

9. Measurement Variability

In accordance with published RF Exposure KDB procedure 865664 D01 SAR measurement 100 MHz to 6 GHz v01. These additional measurements are repeated after the completion of all measurements requiring the same head or body tissue-equivalent medium in a frequency band. The test device should be returned to ambient conditions (normal room temperature) with the battery fully charged before it is re-mounted on the device holder for the repeated measurement(s) to minimize any unexpected variations in the repeated results

- 1) Repeated measurement is not required when the original highest measured SAR is < 0.80 W/kg; steps 2) through 4) do not apply.
- 2) When the original highest measured SAR is ≥ 0.80 W/kg, repeat that measurement once.
- 3) Perform a second repeated measurement only if the ratio of largest to smallest SAR for the original and first repeated measurements is > 1.20 or when the original or repeated measurement is ≥ 1.45 W/kg (~ 10% from the 1-g SAR limit).
- 4) Perform a third repeated measurement only if the original, first or second repeated measurement is ≥ 1.5 W/kg and the ratio of largest to smallest SAR for the original, first and second repeated measurements is > 1.20 .

Note: The same procedures should be adapted for measurements according to extremity and occupational exposure limits by applying a factor of 2.5 for extremity exposure and a factor of 5 for occupational exposure to the corresponding SAR thresholds.

The Highest Measured SAR Configuration in Each Frequency Band

Head

SAR probe calibration point	Frequency Band	Freq.(MHz)	EUT Position	Meas. SAR (W/kg)		Largest toSmallestSARRatio
				Original	Repeated	
/	/	/	/	/	/	/

Body

SAR probe calibration point	Frequency Band	Freq.(MHz)	EUT Position	Meas. SAR (W/kg)		Largest toSmallestSARRatio
				Original	Repeated	
5300MHz (5090-5250MHz)	WLAN5.3G	5320	Body Right	1.03	0.976	1.05

Note:

1. Second Repeated Measurement is not required since the ratio of the largest to smallest SAR for the original and first repeated measurement is not > 1.20 .
2. The measured SAR results **do not** have to be scaled to the maximum tune-up tolerance to determine if repeated measurements are required.
3. SAR measurement variability must be assessed for each frequency band, which is determined by the **SAR probe calibration point and tissue-equivalent medium** used for the device measurements.

10. SAR SIMULTANEOUS TRANSMISSION DESCRIPTION

Simultaneous Transmission:

Description of Simultaneous Transmit Capabilities		
Transmitter Combination	Simultaneous?	Hotspot?
WWAN LTE Antenna + WLAN 2.4G/5G	√	√
WWAN LTE Antenna + Bluetooth	√	×

Note: WLAN 5.3G and 5.6G do not support hotspots

Simultaneous SAR test exclusion considerations:

Mode(SAR1+SAR2)	Position	Reported SAR(W/kg)		Σ SAR < 1.6W/kg
		SAR1	SAR2	
MAX.WWAN LTE +Bluetooth	Body Front	0.35	0.03	0.38
	Body Back	0.43	0.02	0.45
	Body Left	0.14	NA	0.14
	Body Right	0.47	0.02	0.49
	Body Bottom	0.45	NA	0.45
	Body Top	NA	0.02	0.02

Mode(SAR1+SAR2)	Position	Reported SAR(W/kg)		Σ SAR < 1.6W/kg
		SAR1	SAR2	
LTE Band 7+ WLAN 2.4G	Body Front	0.26	0.26	0.52
	Body Back	0.19	0.12	0.31
	Body Left	0.06	NA	0.06
	Body Right	0.41	0.22	0.63
	Body Bottom	0.14	NA	0.14
	Body Top	NA	0.22	0.22
LTE Band 12&17+ WLAN 2.4G	Body Front	0.11	0.26	0.37
	Body Back	0.03	0.12	0.15
	Body Left	0.07	NA	0.07
	Body Right	0.04	0.22	0.26
	Body Bottom	0.01	NA	0.01
	Body Top	NA	0.22	0.22
LTE Band 13+ WLAN 2.4G	Body Front	0.05	0.26	0.31
	Body Back	0.19	0.12	0.31
	Body Left	0.09	NA	0.09
	Body Right	0.05	0.22	0.27
	Body Bottom	0.03	NA	0.03
	Body Top	NA	0.22	0.22
LTE Band 14+ WLAN 2.4G	Body Front	0.06	0.26	0.32
	Body Back	0.19	0.12	0.31
	Body Left	0.1	NA	0.1
	Body Right	0.08	0.22	0.3
	Body Bottom	0.04	NA	0.04
	Body Top	NA	0.22	0.22
LTE Band 25&2+ WLAN 2.4G	Body Front	0.25	0.26	0.51
	Body Back	0.43	0.12	0.55
	Body Left	0.07	NA	0.07
	Body Right	0.38	0.22	0.6
	Body Bottom	0.28	NA	0.28
	Body Top	NA	0.22	0.22
LTE Band 26&5+ WLAN 2.4G	Body Front	0.07	0.26	0.33
	Body Back	0.14	0.12	0.26
	Body Left	0.14	NA	0.14
	Body Right	0.11	0.22	0.33
	Body Bottom	0.07	NA	0.07
	Body Top	NA	0.22	0.22

Mode(SAR1+SAR2)	Position	Reported SAR(W/kg)		Σ SAR < 1.6W/kg
		SAR1	SAR2	
LTE Band 41+ WLAN 2.4G	Body Front	0.14	0.26	0.4
	Body Back	0.19	0.12	0.31
	Body Left	0.08	NA	0.08
	Body Right	0.25	0.22	0.47
	Body Bottom	0.09	NA	0.09
	Body Top	NA	0.22	0.22
LTE Band 66&4+ WLAN 2.4G	Body Front	0.35	0.26	0.61
	Body Back	0.37	0.12	0.49
	Body Left	0.08	NA	0.08
	Body Right	0.47	0.22	0.69
	Body Bottom	0.45	NA	0.45
	Body Top	NA	0.22	0.22
LTE Band 71+ WLAN 2.4G	Body Front	0.04	0.26	0.3
	Body Back	0.06	0.12	0.18
	Body Left	0.07	NA	0.07
	Body Right	0.05	0.22	0.27
	Body Bottom	0.01	NA	0.01
	Body Top	NA	0.22	0.22

Mode(SAR1+SAR2)	Position	Reported SAR(W/kg)		Σ SAR < 1.6W/kg
		SAR1	SAR2	
LTE Band 7+ WLAN 5.2G	Body Front	0.26	0.09	0.35
	Body Back	0.19	0.45	0.64
	Body Left	0.06	NA	0.06
	Body Right	0.41	0.54	0.95
	Body Bottom	0.14	NA	0.14
	Body Top	NA	0.14	0.21
LTE Band 12&17+ WLAN 5.2G	Body Front	0.11	0.09	0.2
	Body Back	0.03	0.45	0.48
	Body Left	0.07	NA	0.07
	Body Right	0.04	0.54	0.58
	Body Bottom	0.01	NA	0.01
	Body Top	NA	0.14	0.21
LTE Band 13+ WLAN 5.2G	Body Front	0.05	0.09	0.14
	Body Back	0.19	0.45	0.64
	Body Left	0.09	NA	0.09
	Body Right	0.05	0.54	0.59
	Body Bottom	0.03	NA	0.03
	Body Top	NA	0.14	0.21
LTE Band 14+ WLAN 5.2G	Body Front	0.06	0.09	0.15
	Body Back	0.19	0.45	0.64
	Body Left	0.1	NA	0.1
	Body Right	0.08	0.54	0.62
	Body Bottom	0.04	NA	0.04
	Body Top	NA	0.14	0.21
LTE Band 25&2+ WLAN 5.2G	Body Front	0.25	0.09	0.34
	Body Back	0.43	0.45	0.88
	Body Left	0.07	NA	0.07
	Body Right	0.38	0.54	0.92
	Body Bottom	0.28	NA	0.28
	Body Top	NA	0.14	0.21
LTE Band 26&5+ WLAN 5.2G	Body Front	0.07	0.09	0.16
	Body Back	0.14	0.45	0.59
	Body Left	0.14	NA	0.14
	Body Right	0.11	0.54	0.65
	Body Bottom	0.07	NA	0.07
	Body Top	NA	0.14	0.21

Mode(SAR1+SAR2)	Position	Reported SAR(W/kg)		Σ SAR < 1.6W/kg
		SAR1	SAR2	
LTE Band 41+ WLAN 5.2G	Body Front	0.14	0.09	0.23
	Body Back	0.19	0.45	0.64
	Body Left	0.08	NA	0.08
	Body Right	0.25	0.54	0.79
	Body Bottom	0.09	NA	0.09
	Body Top	NA	0.14	0.21
LTE Band 66&4+ WLAN 5.2G	Body Front	0.35	0.09	0.44
	Body Back	0.37	0.45	0.82
	Body Left	0.08	NA	0.08
	Body Right	0.47	0.54	1.01
	Body Bottom	0.45	NA	0.45
	Body Top	NA	0.14	0.21
LTE Band 71+ WLAN 5.2G	Body Front	0.04	0.09	0.13
	Body Back	0.06	0.45	0.51
	Body Left	0.07	NA	0.07
	Body Right	0.05	0.54	0.59
	Body Bottom	0.01	NA	0.01
	Body Top	NA	0.14	0.21

Mode(SAR1+SAR2)	Position	Reported SAR(W/kg)		Σ SAR < 1.6W/kg
		SAR1	SAR2	
LTE Band 7+ WLAN 5.3G	Body Front	0.26	0.2	0.46
	Body Back	0.19	0.58	0.77
	Body Left	0.06	NA	0.06
	Body Right	0.41	1.09	1.5
	Body Bottom	0.14	NA	0.14
	Body Top	NA	0.18	0.18
LTE Band 12&17+ WLAN 5.3G	Body Front	0.11	0.2	0.31
	Body Back	0.03	0.58	0.61
	Body Left	0.07	NA	0.07
	Body Right	0.04	1.09	1.13
	Body Bottom	0.01	NA	0.01
	Body Top	NA	0.18	0.18
LTE Band 13+ WLAN 5.3G	Body Front	0.05	0.2	0.25
	Body Back	0.19	0.58	0.77
	Body Left	0.09	NA	0.09
	Body Right	0.05	1.09	1.14
	Body Bottom	0.03	NA	0.03
	Body Top	NA	0.18	0.18
LTE Band 14+ WLAN 5.3G	Body Front	0.06	0.2	0.26
	Body Back	0.19	0.58	0.77
	Body Left	0.1	NA	0.1
	Body Right	0.08	1.09	1.17
	Body Bottom	0.04	NA	0.04
	Body Top	NA	0.18	0.18
LTE Band 25&2+ WLAN 5.3G	Body Front	0.25	0.2	0.45
	Body Back	0.43	0.58	1.01
	Body Left	0.07	NA	0.07
	Body Right	0.38	1.09	1.47
	Body Bottom	0.28	NA	0.28
	Body Top	NA	0.18	0.18
LTE Band 26&5+ WLAN 5.3G	Body Front	0.07	0.2	0.27
	Body Back	0.14	0.58	0.72
	Body Left	0.14	NA	0.14
	Body Right	0.11	1.09	1.2
	Body Bottom	0.07	NA	0.07
	Body Top	NA	0.18	0.18

Mode(SAR1+SAR2)	Position	Reported SAR(W/kg)		Σ SAR < 1.6W/kg
		SAR1	SAR2	
LTE Band 41+ WLAN 5.3G	Body Front	0.14	0.2	0.34
	Body Back	0.19	0.58	0.77
	Body Left	0.08	NA	0.08
	Body Right	0.25	1.09	1.34
	Body Bottom	0.09	NA	0.09
	Body Top	NA	0.18	0.18
LTE Band 66&4+ WLAN 5.3G	Body Front	0.35	0.2	0.55
	Body Back	0.37	0.58	0.95
	Body Left	0.08	NA	0.08
	Body Right	0.47	1.09	1.56
	Body Bottom	0.45	NA	0.45
	Body Top	NA	0.18	0.18
LTE Band 71+ WLAN 5.3G	Body Front	0.04	0.2	0.24
	Body Back	0.06	0.58	0.64
	Body Left	0.07	NA	0.07
	Body Right	0.05	1.09	1.14
	Body Bottom	0.01	NA	0.01
	Body Top	NA	0.18	0.18

Mode(SAR1+SAR2)	Position	Reported SAR(W/kg)		Σ SAR < 1.6W/kg
		SAR1	SAR2	
LTE Band 7+ WLAN 5.6G	Body Front	0.26	0.16	0.42
	Body Back	0.19	0.46	0.65
	Body Left	0.06	NA	0.06
	Body Right	0.41	0.4	0.81
	Body Bottom	0.14	NA	0.14
	Body Top	NA	0.21	0.21
LTE Band 12&17+ WLAN 5.6G	Body Front	0.11	0.16	0.27
	Body Back	0.03	0.46	0.49
	Body Left	0.07	NA	0.07
	Body Right	0.04	0.4	0.44
	Body Bottom	0.01	NA	0.01
	Body Top	NA	0.21	0.21
LTE Band 13+ WLAN 5.6G	Body Front	0.05	0.16	0.21
	Body Back	0.19	0.46	0.65
	Body Left	0.09	NA	0.09
	Body Right	0.05	0.4	0.45
	Body Bottom	0.03	NA	0.03
	Body Top	NA	0.21	0.21
LTE Band 14+ WLAN 5.6G	Body Front	0.06	0.16	0.22
	Body Back	0.19	0.46	0.65
	Body Left	0.1	NA	0.1
	Body Right	0.08	0.4	0.48
	Body Bottom	0.04	NA	0.04
	Body Top	NA	0.21	0.21
LTE Band 25&2+ WLAN 5.6G	Body Front	0.25	0.16	0.41
	Body Back	0.43	0.46	0.89
	Body Left	0.07	NA	0.07
	Body Right	0.38	0.4	0.78
	Body Bottom	0.28	NA	0.28
	Body Top	NA	0.21	0.21
LTE Band 26&5+ WLAN 5.6G	Body Front	0.07	0.16	0.23
	Body Back	0.14	0.46	0.6
	Body Left	0.14	NA	0.14
	Body Right	0.11	0.4	0.51
	Body Bottom	0.07	NA	0.07
	Body Top	NA	0.21	0.21

Mode(SAR1+SAR2)	Position	Reported SAR(W/kg)		Σ SAR < 1.6W/kg
		SAR1	SAR2	
LTE Band 41+ WLAN 5.6G	Body Front	0.14	0.16	0.3
	Body Back	0.19	0.46	0.65
	Body Left	0.08	NA	0.08
	Body Right	0.25	0.4	0.65
	Body Bottom	0.09	NA	0.09
	Body Top	NA	0.21	0.21
LTE Band 66&4+ WLAN 5.6G	Body Front	0.35	0.16	0.51
	Body Back	0.37	0.46	0.83
	Body Left	0.08	NA	0.08
	Body Right	0.47	0.4	0.87
	Body Bottom	0.45	NA	0.45
	Body Top	NA	0.21	0.21
LTE Band 71+ WLAN 5.6G	Body Front	0.04	0.16	0.2
	Body Back	0.06	0.46	0.52
	Body Left	0.07	NA	0.07
	Body Right	0.05	0.4	0.45
	Body Bottom	0.01	NA	0.01
	Body Top	NA	0.21	0.21

Mode(SAR1+SAR2)	Position	Reported SAR(W/kg)		Σ SAR < 1.6W/kg
		SAR1	SAR2	
LTE Band 7+ WLAN 5.8G	Body Front	0.26	0.13	0.39
	Body Back	0.19	0.22	0.41
	Body Left	0.06	NA	0.06
	Body Right	0.41	0.19	0.6
	Body Bottom	0.14	NA	0.14
	Body Top	NA	0.15	0.15
LTE Band 12&17+ WLAN 5.8G	Body Front	0.11	0.13	0.24
	Body Back	0.03	0.22	0.25
	Body Left	0.07	NA	0.07
	Body Right	0.04	0.19	0.23
	Body Bottom	0.01	NA	0.01
	Body Top	NA	0.15	0.15
LTE Band 13+ WLAN 5.8G	Body Front	0.05	0.13	0.18
	Body Back	0.19	0.22	0.41
	Body Left	0.09	NA	0.09
	Body Right	0.05	0.19	0.24
	Body Bottom	0.03	NA	0.03
	Body Top	NA	0.15	0.15
LTE Band 14+ WLAN 5.8G	Body Front	0.06	0.13	0.19
	Body Back	0.19	0.22	0.41
	Body Left	0.1	NA	0.1
	Body Right	0.08	0.19	0.27
	Body Bottom	0.04	NA	0.04
	Body Top	NA	0.15	0.15
LTE Band 25&2+ WLAN 5.8G	Body Front	0.25	0.13	0.38
	Body Back	0.43	0.22	0.65
	Body Left	0.07	NA	0.07
	Body Right	0.38	0.19	0.57
	Body Bottom	0.28	NA	0.28
	Body Top	NA	0.15	0.15
LTE Band 26&5+ WLAN 5.8G	Body Front	0.07	0.13	0.2
	Body Back	0.14	0.22	0.36
	Body Left	0.14	NA	0.14
	Body Right	0.11	0.19	0.3
	Body Bottom	0.07	NA	0.07
	Body Top	NA	0.15	0.15

Mode(SAR1+SAR2)	Position	Reported SAR(W/kg)		Σ SAR < 1.6W/kg
		SAR1	SAR2	
LTE Band 41+ WLAN 5.8G	Body Front	0.14	0.13	0.27
	Body Back	0.19	0.22	0.41
	Body Left	0.08	NA	0.08
	Body Right	0.25	0.19	0.44
	Body Bottom	0.09	NA	0.09
	Body Top	NA	0.15	0.15
LTE Band 66&4+ WLAN 5.8G	Body Front	0.35	0.13	0.48
	Body Back	0.37	0.22	0.59
	Body Left	0.08	NA	0.08
	Body Right	0.47	0.19	0.66
	Body Bottom	0.45	NA	0.45
	Body Top	NA	0.15	0.15
LTE Band 71+ WLAN 5.8G	Body Front	0.04	0.13	0.17
	Body Back	0.06	0.22	0.28
	Body Left	0.07	NA	0.07
	Body Right	0.05	0.19	0.24
	Body Bottom	0.01	NA	0.01
	Body Top	NA	0.15	0.15

Note:

1.For the EIRP of NFC is 0.011mW, per KDB447498 D01 clause 4.3, the estimated SAR is so lower, so theNFCalmost have no influence on the results of simultaneous transmission.

Conclusion:

Sum of SAR: Σ SAR \leq 1.6 W/kg therefore simultaneous transmission SAR with Volume Scans is **not required**.

11. SAR Plots

Please Refer to the Attachment.

APPENDIX A MEASUREMENT UNCERTAINTY

The uncertainty budget has been determined for the measurement system and is given in the following Table.

Measurement uncertainty evaluation for IEEE1528-2013 SAR test

Source of uncertainty	Tolerance/ uncertainty ± %	Probability distribution	Divisor	ci (1 g)	ci (10 g)	Standard uncertainty ± %, (1 g)	Standard uncertainty ± %, (10 g)
Measurement system							
Probe calibration	6.55	N	1	1	1	6.3	6.3
Axial Isotropy	4.7	R	$\sqrt{3}$	1	1	2.7	2.7
Hemispherical Isotropy	9.6	R	$\sqrt{3}$	0	0	0.0	0.0
Boundary effect	1.0	R	$\sqrt{3}$	1	1	0.6	0.6
Linearity	4.7	R	$\sqrt{3}$	1	1	2.7	2.7
Detection limits	1.0	R	$\sqrt{3}$	1	1	0.6	0.6
Readout electronics	0.3	N	1	1	1	0.3	0.3
Response time	0.0	R	$\sqrt{3}$	1	1	0.0	0.0
Integration time	0.0	R	$\sqrt{3}$	1	1	0.0	0.0
RF ambient conditions – noise	1.0	R	$\sqrt{3}$	1	1	0.6	0.6
RF ambient conditions– reflections	1.0	R	$\sqrt{3}$	1	1	0.6	0.6
Probe positioner mech. Restrictions	0.8	R	$\sqrt{3}$	1	1	0.5	0.5
Probe positioning with respect to phantom shell	6.7	R	$\sqrt{3}$	1	1	3.9	3.9
Post-processing	2.0	R	$\sqrt{3}$	1	1	1.2	1.2
Test sample related							
Test sample positioning	2.8	N	1	1	1	2.8	2.8
Device holder uncertainty	6.3	N	1	1	1	6.3	6.3
Drift of output power	5.0	R	$\sqrt{3}$	1	1	2.9	2.9
Phantom and set-up							
Phantom uncertainty (shape and thickness tolerances)	4.0	R	$\sqrt{3}$	1	1	2.3	2.3
Liquid conductivity target)	5.0	R	$\sqrt{3}$	0.64	0.43	1.8	1.2
Liquid conductivity meas.)	2.5	N	1	0.64	0.43	1.6	1.1
Liquid permittivity target)	5.0	R	$\sqrt{3}$	0.6	0.49	1.7	1.4
Liquid permittivity meas.)	2.5	N	1	0.6	0.49	1.5	1.2
Combined standard uncertainty		RSS				12.2	12.0
Expanded uncertainty 95 % confidence interval)						24.1	23.7

Measurement uncertainty evaluation for IEC62209-1 SAR test

Source of uncertainty	Tolerance/ uncertainty ± %	Probability distribution	Divisor	ci (1 g)	ci (10 g)	Standard uncertainty ± %, (1 g)	Standard uncertainty ± %, (10 g)
Measurement system							
Probe calibration	6.55	N	1	1	1	6.3	6.3
Axial Isotropy	4.7	R	$\sqrt{3}$	1	1	2.7	2.7
Hemispherical Isotropy	9.6	R	$\sqrt{3}$	0	0	0.0	0.0
Boundary effect	1.0	R	$\sqrt{3}$	1	1	0.6	0.6
Linearity	4.7	R	$\sqrt{3}$	1	1	2.7	2.7
Detection limits	1.0	R	$\sqrt{3}$	1	1	0.6	0.6
Readout electronics	0.3	N	1	1	1	0.3	0.3
Response time	0.0	R	$\sqrt{3}$	1	1	0.0	0.0
Integration time	0.0	R	$\sqrt{3}$	1	1	0.0	0.0
RF ambient conditions – noise	1.0	R	$\sqrt{3}$	1	1	0.6	0.6
Probe positioning with respect to phantom shell	6.7	R	$\sqrt{3}$	1	1	3.9	3.9
Probe positioner mech. Restrictions	0.8	R	$\sqrt{3}$	1	1	0.5	0.5
RF ambient conditions– reflections	1.0	R	$\sqrt{3}$	1	1	0.6	0.6
Post-processing	2.0	R	$\sqrt{3}$	1	1	1.2	1.2
Test sample related							
Test sample positioning	2.8	N	1	1	1	2.8	2.8
Device holder uncertainty	6.3	N	1	1	1	6.3	6.3
Drift of output power	5.0	R	$\sqrt{3}$	1	1	2.9	2.9
Phantom and set-up							
Phantom uncertainty (shape and thickness tolerances)	4.0	R	$\sqrt{3}$	1	1	2.3	2.3
Liquid conductivity target)	5.0	R	$\sqrt{3}$	0.64	0.43	1.8	1.2
Liquid conductivity meas.)	2.5	N	1	0.64	0.43	1.6	1.1
Liquid permittivity target)	5.0	R	$\sqrt{3}$	0.6	0.49	1.7	1.4
Liquid permittivity meas.)	2.5	N	1	0.6	0.49	1.5	1.2
Combined standard uncertainty		RSS				12.2	12.0
Expanded uncertainty 95 % confidence interval)						24.0	23.6

APPENDIX B EUT TEST POSITION PHOTOS

Please Refer to the Attachment.

APPENDIX C CALIBRATION CERTIFICATES

Please Refer to the Attachment.

******* END OF REPORT *******