

M1N-TKH0401 User Manual

(V1.0)

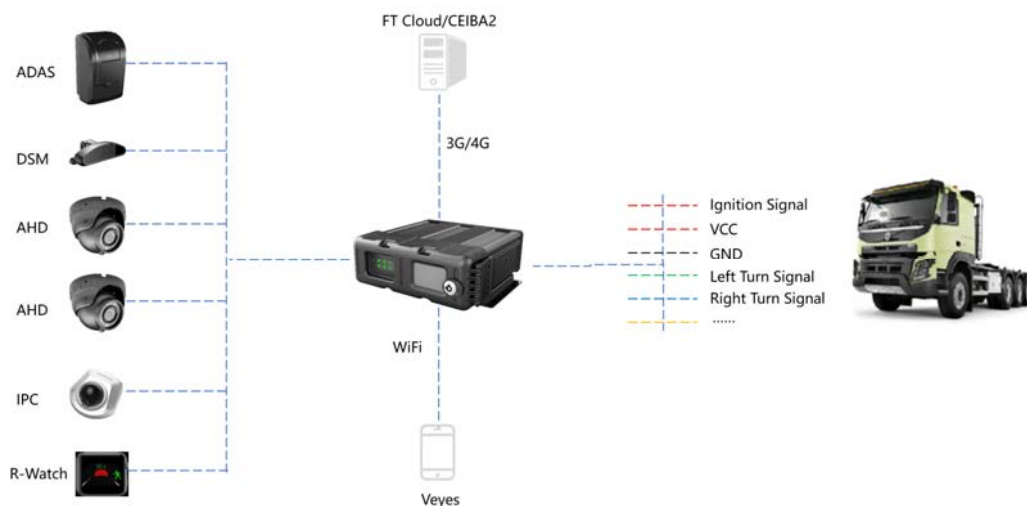


1 Overview

《M1N-TKH0401 User Manual》 It aims to better understand the powerful functions of the equipment system and how to guide us to fully understand and use these functions more efficiently.

1.1 System Introduction

M1N-TKH0401 is a cost-effective device specially developed for mobile video surveillance and remote video surveillance, featuring high functional scalability. It is equipped with a high-speed processor and an embedded operating system, integrating state-of-the-art H.265 video compression/decompression technology and GPS/BD positioning technology in the IT industry. It supports video recording in 1080p, 720p, WD1, WHD1, WCIF, D1, HD1, and CIF formats. In addition, it supports extended AI intelligent algorithms to report alarms by using the Advanced Driver Assistance System (ADAS) and implement Blind Spot Detection (BSD) and Driver Status Monitor (DSM), effectively assisting drivers in safe driving and reducing traffic accidents.



1.2 Functional Overview

M1N-TKH0401 is a cost-effective intelligent device specially developed for remote video and driving safety monitoring of commercial vehicles. Its functional characteristics are as follows:

- Embedded Linux operating system
- Extended AI intelligent algorithms
- H.265/H.264 encoding/decoding to improve the memory space utilization
- Dual SD cards
- Good anti-vibration performance, simple design, flexible and easy installation, and high reliability, providing comprehensive functions

2 Display Operation

The operation of parameter configuration, preview, playback and data export of the host can be carried out through the CP4 control panel, freight operation and maintenance treasure or IE terminal. CP4 can be operated by full-screen touch or connected with a mouse.

2.1 Button Control



Button	Description
Replay	Buttons for reporting stops with special equipment for school buses.
Announce	The school bus special equipment report button, press the stop button on the direct interface to enter the stop report interface.
Number 1-0	<ul style="list-style-type: none"> ● Press 1-9 to display channels 1-9 when you are currently in the direct interface, and press 0 to display the next channel. ● Number input key
Arrow	Direction selection key
Enter	Confirm selection key
Exit	Exit the current menu




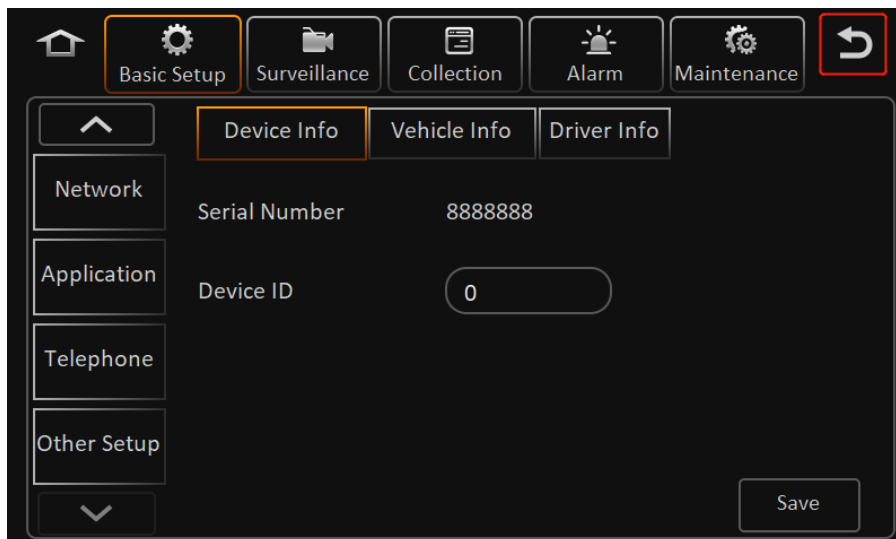
2.2 Mouse control

You can connect a mouse through the USB port to operate on the CP4 panel, and the mouse cursor will appear on the screen after connection.

- When the device is in four screens/nine screens, double-click the left mouse button to zoom into a single screen display;
- Click the left mouse button to select or perform other operations;;
- Click the right mouse button to pop up the bottom menu bar.

2.3 Interface Operation

When using CP4, you can directly click the corresponding option on the screen with your hand, or you can click with the mouse. To return to the previous interface, click the return button in the upper right corner of the current interface .



3 Function Instructions

3.1 Pass-through Interface

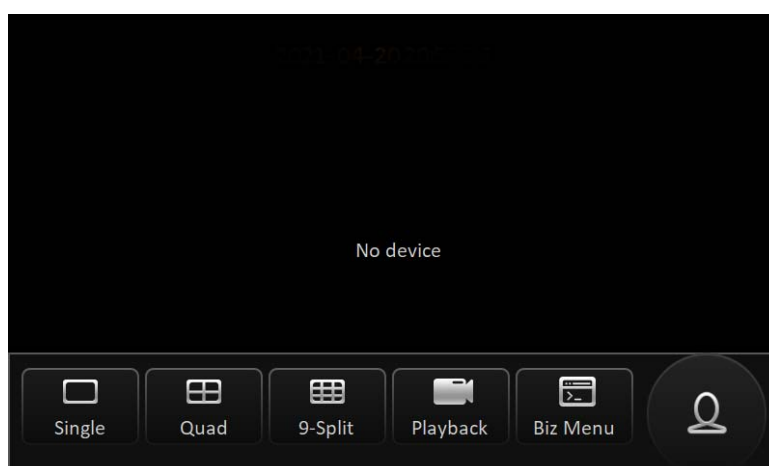
After the device is turned on, it enters the video pass-through preview interface by default. In the

pass-through interface, touch the screen (or click the right button of the mouse), and a menu will pop up at the bottom. [Playback], [Biz Menu], [Login Profile Picture].

- Click anywhere on the screen (or click the right mouse button) to pop up the bottom menu bar;
- The video through preview interface can be superimposed: time, vehicle speed, license plate, positioning information, alarm status, channel name, vehicle self-number, ACC information; whether the superimposed information is displayed and the display position can be configured in the parameter settings;
- Single screen: Click [Single screen] to switch the video channel;
- Four-screen/nine-screen: After selecting the four-screen/nine-screen layout, double-click a video screen to zoom in to a single-screen display, and click again to return to the four-screen/nine-screen layout.

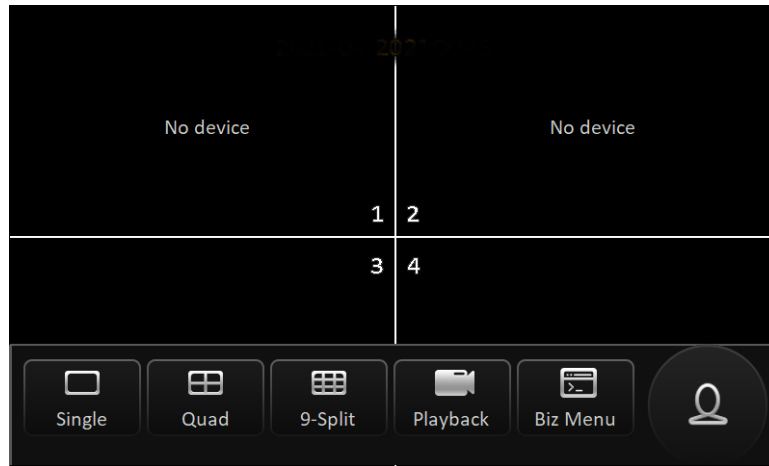
3.1.1 Single Screen

Single Screen: Click [Single screen] on the pass-through interface, and the pass-through interface will display a single channel video. Double-click the screen to return to the four-screen layout.



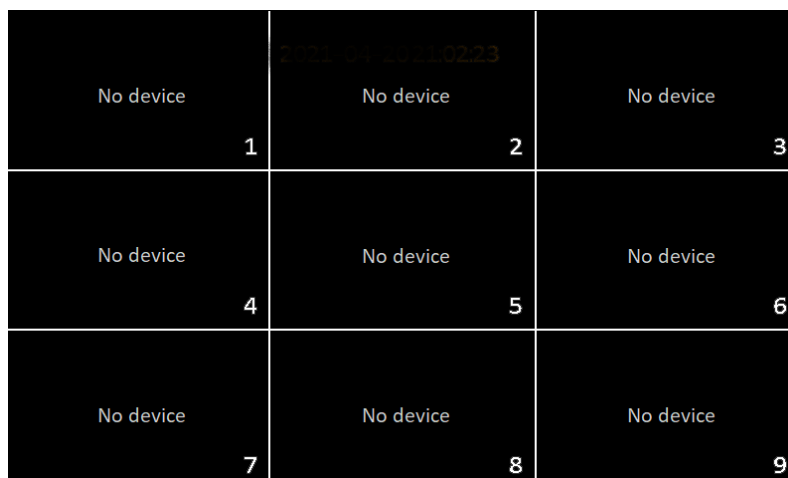
3.1.2 Four Screens

Four Screens: Click [Four screens] on the pass-through interface, the pass-through interface displays 4 channels of video, and only the channel connected to the camera will have the screen display. As shown below. Double-click a channel on the screen to zoom in and display a channel individually, and double-click again to return to the four screens.



3.1.3 Nine Screens

Nine Screens: Click [Nine screens] on the direct interface, the direct interface displays 9 channels of video, and only the channel connected to the camera will have the screen display. As shown below. Double-click a channel on the screen to zoom in and display a channel individually, and double-click again to return to the nine screens.



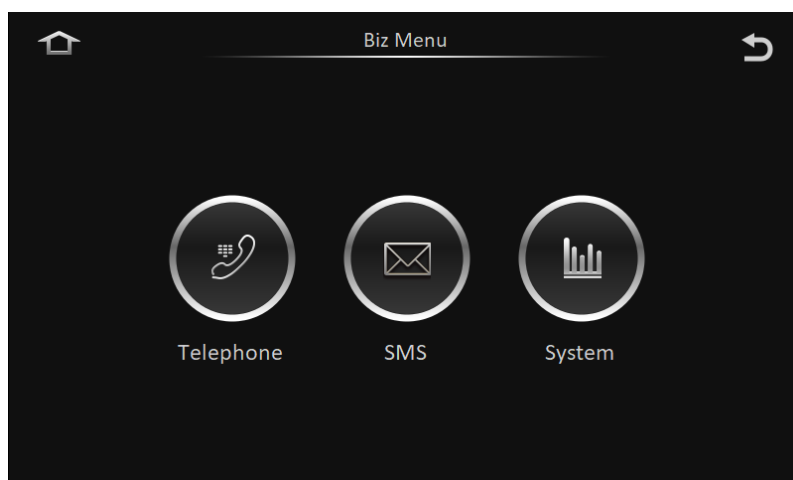
3.1.4 Replay

Playback: Click [Playback] on the direct interface to directly enter the playback interface, as shown in the figure below:



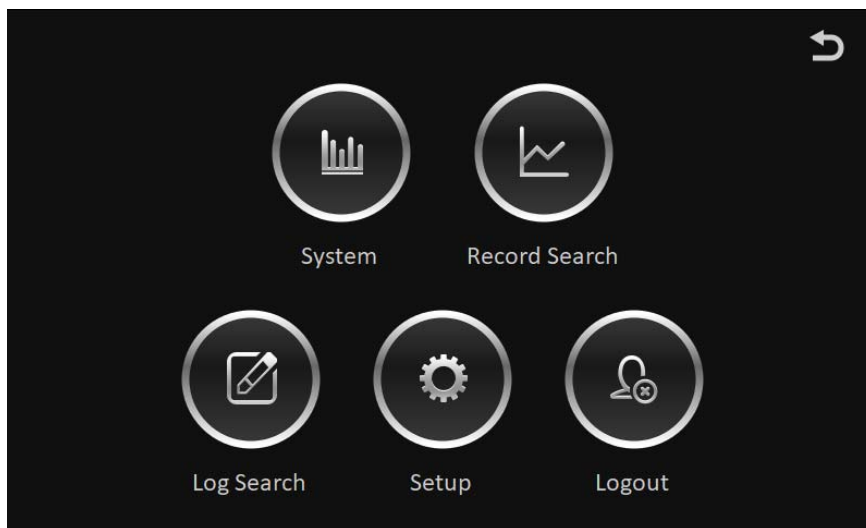
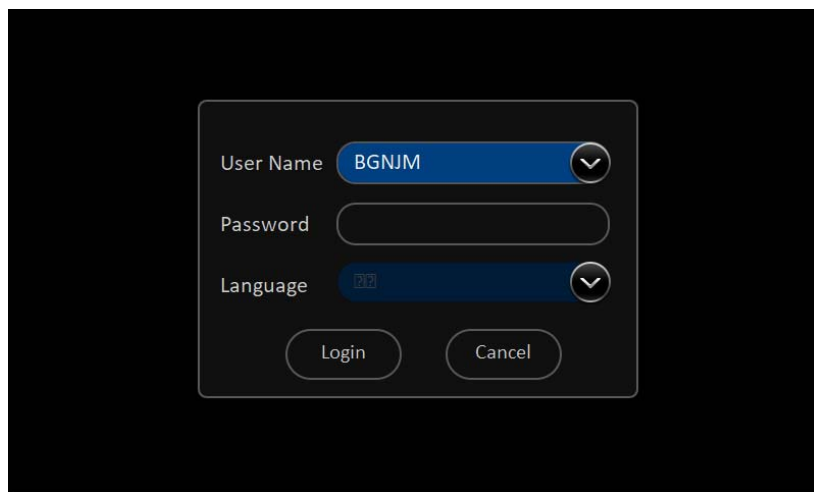
3.1.5 Biz Menu

Biz Menu: Click [Biz Menu] on the direct interface to enter the following interface:



3.1.6 Log in

In the direct interface, touch the screen (or click the right mouse button), a menu will pop up at the bottom, and click the avatar button on the far right to log in and enter the setting interface:



3.2 System Message

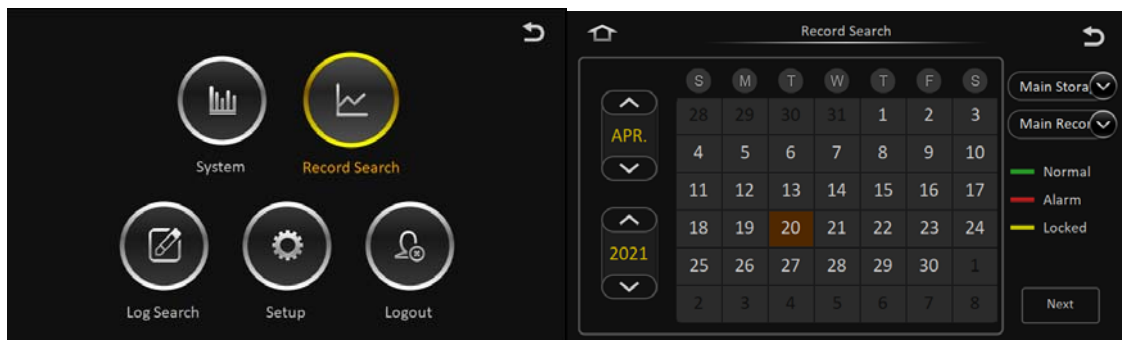
In the direct interface, click [Login Profile]>[System] to enter the following interface:



3.3 Video Search

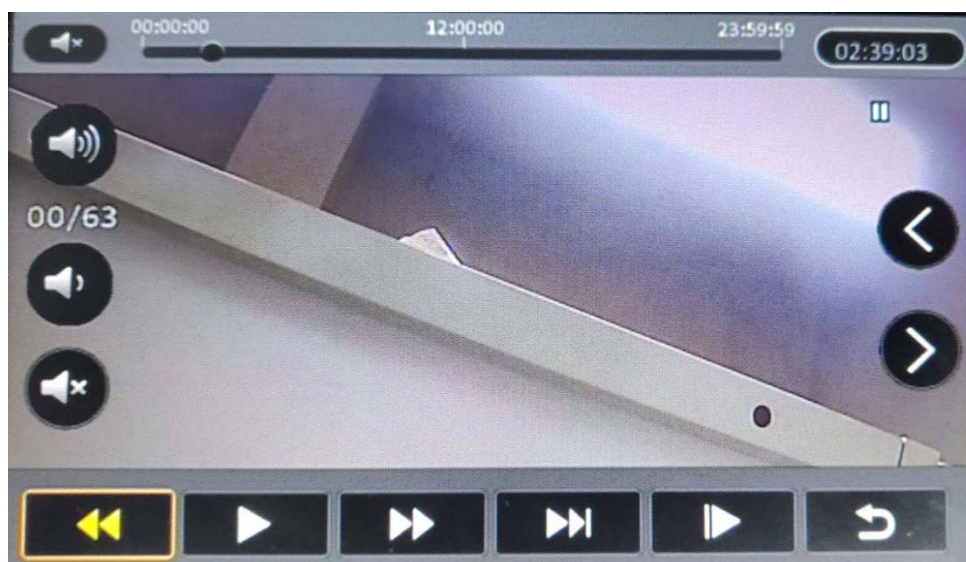
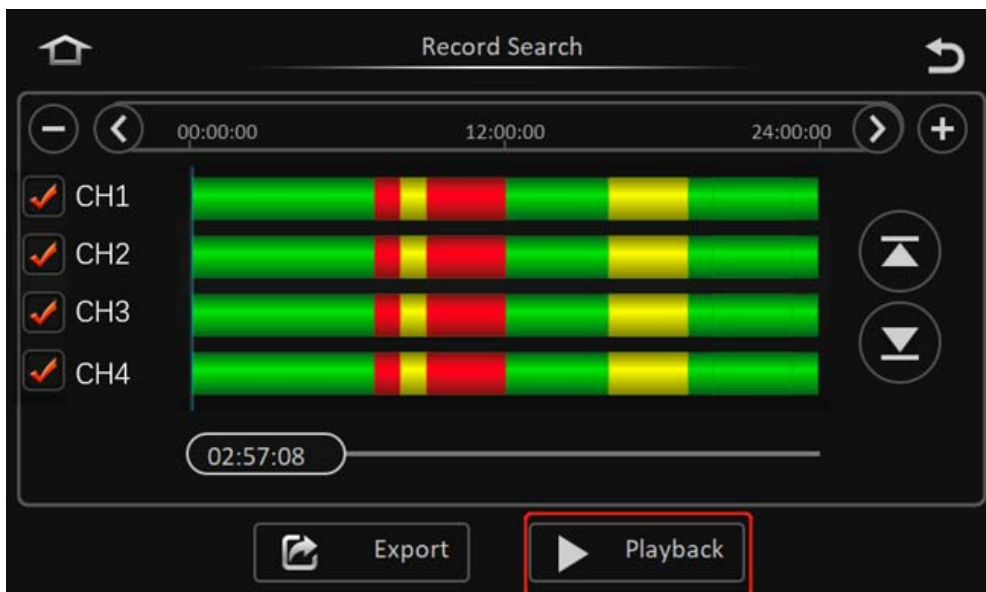
3.3.1 Video Query

Click [Login Avatar]>[Video Search] on the direct interface to enter the video query interface (operate when the SD card exists), the interface is as shown in the figure below:



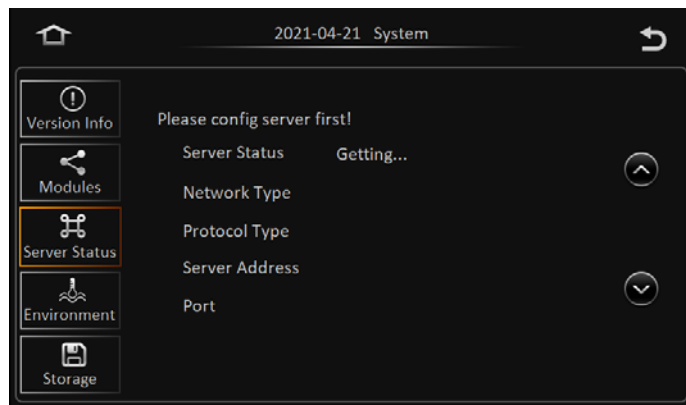
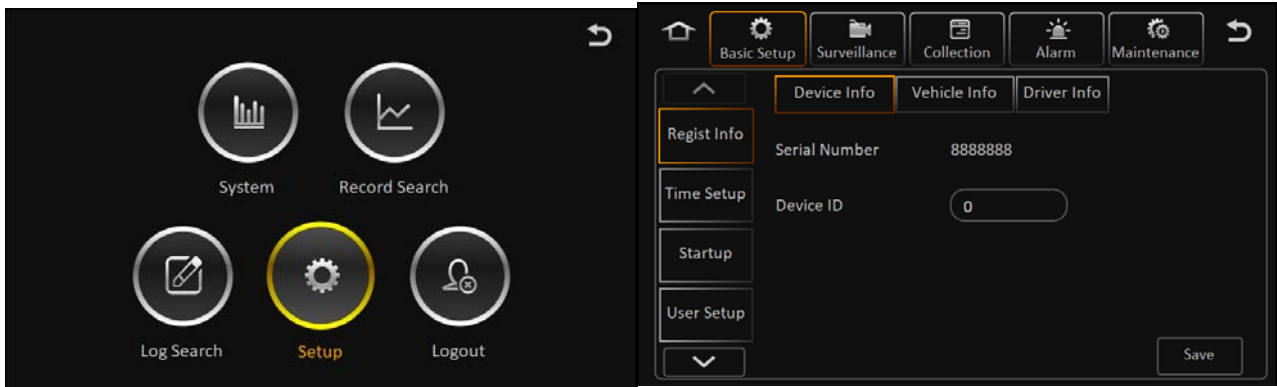
3.3.2 Video Playback

In the video query result interface, click Playback directly to playback the video files of the selected channel and time period, as shown in the figure below:



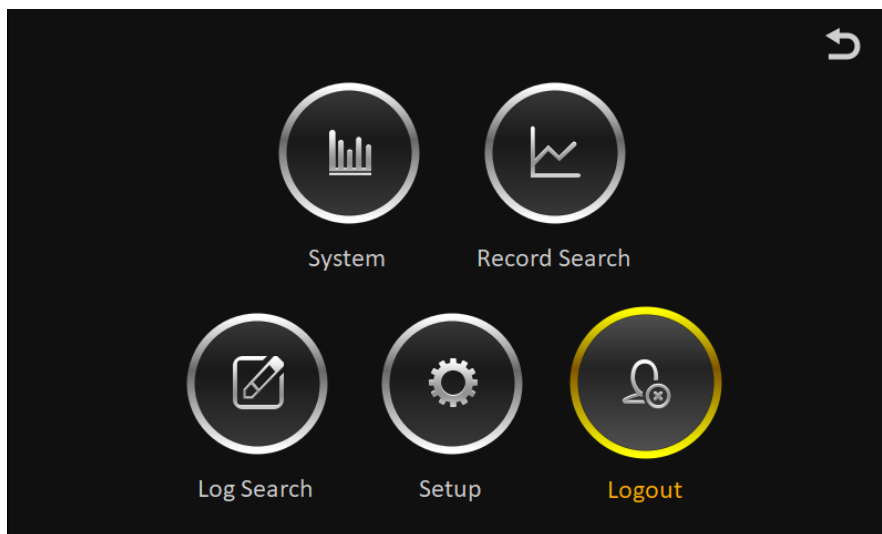
3.4 Settings

In the direct interface, click [Login Profile]>[Settings] to enter the setting interface. In the setting interface, basic settings, recording settings, data collection settings, alarm settings, and operation and maintenance settings can be performed.

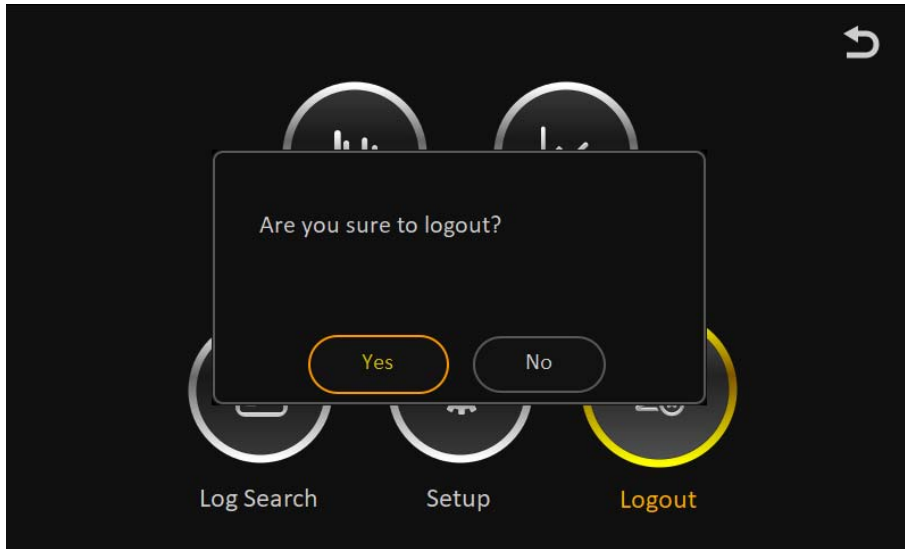


3.5 Sign Out

In the setting interface, video viewing interface or log viewing interface, click the button in the upper right corner to return the interface to the main setting interface, as shown in the figure below:



Click the [Logout] button and click "YES" in the pop-up confirmation prompt box to log out and return to the direct interface.



3.6 FCC Statement

Changes or modifications not expressly approved by the party responsible for compliance could void the user's authority to operate the equipment.

This equipment has been tested and found to comply with the limits for a Class B digital device, pursuant to Part 15 of the FCC Rules. These limits are designed to provide reasonable protection against harmful interference in a residential installation. This equipment generates uses and can radiate radio frequency energy and, if not installed and used in accordance with the instructions, may cause harmful interference to radio communications. However, there is no guarantee that interference will not occur in a particular installation. If this equipment does cause harmful interference to radio or television reception, which can be determined by turning the equipment off and on, the user is encouraged to try to correct the interference by one or more of the following measures:

- Reorient or relocate the receiving antenna.
- Increase the separation between the equipment and receiver.
- Connect the equipment into an outlet on a circuit different from that to which the receiver is connected.
- Consult the dealer or an experienced radio/TV technician for help

This device complies with part 15 of the FCC rules. Operation is subject to the following two conditions (1) this device may not cause harmful interference, and (2) this device must accept any interference received, including interference that may cause undesired operation.

This equipment complies with FCC radiation exposure limits set forth for an uncontrolled environment. This equipment should be installed and operated with minimum distance 20cm between the radiator & your body.