

AD Plus User Manual



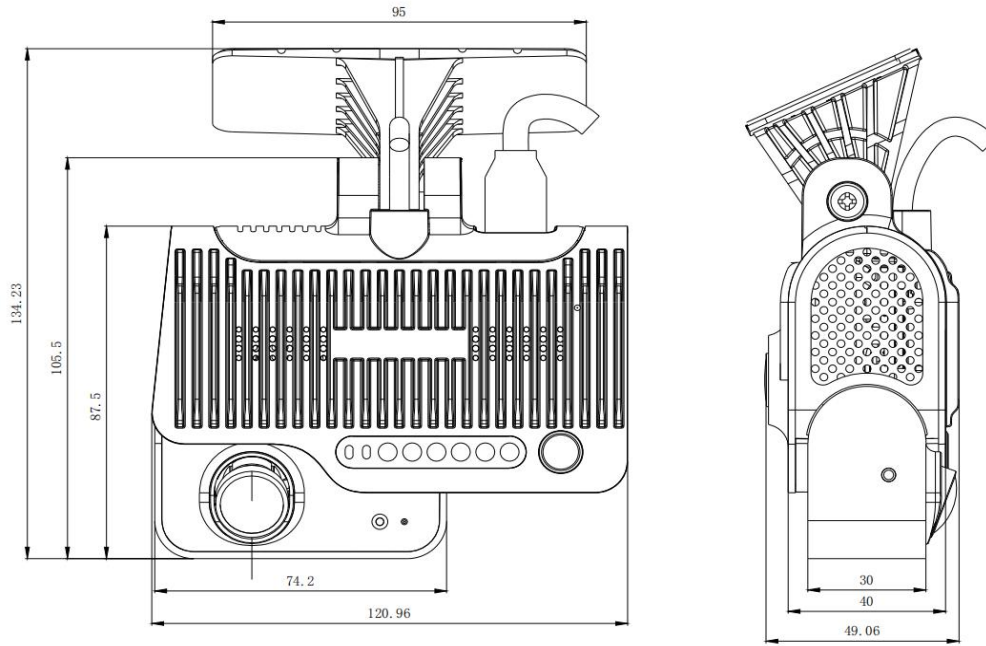
Introduction

Streamax ADplus is a cost-effective device specially developed for remote video surveillance and driving safety surveillance of trucks. Its features are as follows:

- Smart device with built-in ADAS camera and cabin camera
- Integrating 3G/4G, Wi-Fi, Bluetooth, G-Sensor, and other modules to provide various functions
- Adopting the GPS positioning technology to record the vehicle track in real time for background analysis
- Having a compact and light main device, easy installation on the front windshield
- Supporting 1080p HD video
- Intelligently identifying vehicles, lanes, and traffic scenes ahead via the ADAS camera and effectively predicting driving hazards such as tailgating, front collision, and lane departure in combination with the vehicle operating status
- Intelligently identifying the driver's behaviors such as using mobile phones while driving, being sluggish, being distracted, and unfastening

- Supporting dual TF cards for video storage, with the maximum capacity of a single card up to 256 GB
- Supporting remote monitoring and recording
- Supporting external OBD box, easy installation & wiring
- Adopting the special file system to secure video data and personal privacy
- Adopting industrial design, aluminum alloy shell, and large-area heat sink fins to provide excellent heat dissipation
- seatbelts via the cabin camera, and giving an alarm in combination with the vehicle operating status, comprehensively reducing the traffic accidents caused by the driver's misconduct
- Uploading the alarm event and relevant video evidence to the cloud platform via a wireless network, providing real-time alarms, and preserving the onsite video evidence to facilitate evidence collection and truth restoration

Dimensions (mm)



Thank you for choosing AD Plus.

Choosing AD Plus means that you will work with thousands of drivers around the world to use our intelligent assisted driving technology, which can provide drivers, passengers, pedestrians, cyclists and other vulnerable travellers with more Safe road driving experience.

Before using AD Plus, please read and understand this product manual carefully. This manual will briefly explain how to use and quickly install this product. Please keep it properly.

For other information about the product, please contact our technical staff

Thank you for your use and pay attention to traffic safety.

General Information

AD Plus system not only supports the function of ordinary driving recorder, but also has the related functions of intelligent assisted driving. If you need to use the related functions of intelligent assisted driving, please read the following important safety instructions carefully. When the installation is complete and you start to use the AD Plus product, you confirm and agree to the following safety instructions.

AD Plus system can only work under 9VDC~36VDC power supply.

Please do not cover or obscure the camera device or the display device of the AD Plus system.

Except for the purposes described in this product manual, the AD Plus system should not be used for any other purpose.

It may not be possible to install the system on every type and/or year of vehicle. Before purchasing the AD Plus system, please confirm with Shenzhen Ruiming Technology Co., Ltd. and/or the supplier.

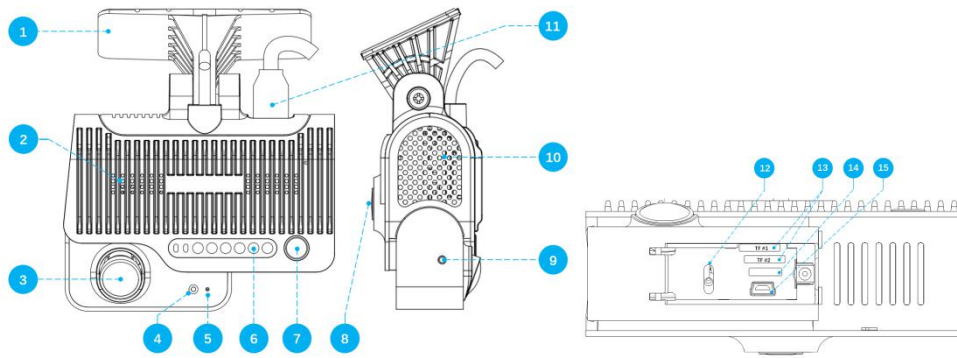
Product Introduction

AD Plus is an all-in-one driving recorder designed for safe driving assistance. It not only has the functions of an ordinary driving recorder, but also supports related functions of intelligent driving assistance. It has the advantages of simple installation, comprehensive functions, and convenient use.

Packing List



Appearance



1、 Bracket

2、 Speaker

3、 Cockpit camera

4、 Photosensitive element

5、 Main microphone

6、 Alarm indicator light

7、 Custom function buttons

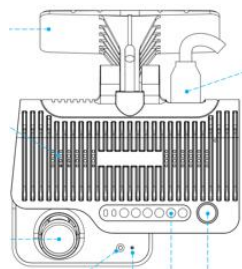
8、 ADAS camera

9、 Cockpit camera fixing hole

12. Cockpit camera angle

adjustment hole

Brief instructions for use



Working status light

Video status light (green/blue)

- Steady green: the device is recording normally
- Green flashing: emergency alarm is generated
- Blue flashing: equipment recording stop/fault

Communication status light (green/red)

- Steady green: The device network and positioning are working normally
- Blinking green: The device's 3G/4G network is working abnormally
- Flashing red: The device's GPS positioning works abnormally
- Green/red flashing cyclically: the device network and positioning work abnormally

Alarm indicator light

Not all AI auxiliary functions will prompt you through the alarm reminder when an alarm occurs, but all AI auxiliary functions can generate alarm reminders through device voice broadcast or additional accessory

"R-Watch" (users can freely configure on/off)

Fatigue warning light. When the indicator light turns on, it indicates that you have entered a state of fatigue.



- Fatigue warning light. When the indicator light turns on, it indicates that you have entered a state of fatigue.
- Distraction reminder light. When the indicator light turns on, it means you are distracted.
- Call reminder light. When the indicator light turns on, it indicates that you are using a handheld phone.

FCC Statement

Changes or modifications not expressly approved by the party responsible for compliance could void the user's authority to operate the equipment.

This equipment has been tested and found to comply with the limits for a Class B digital device, pursuant to Part 15 of the FCC Rules. These limits are designed to provide reasonable protection against harmful interference in a residential installation. This equipment generates uses and can radiate radio frequency energy and, if not installed and used in accordance with the instructions, may cause harmful interference to radio communications. However, there is no guarantee that interference will not occur in a particular installation. If this equipment does cause harmful interference to radio or television reception, which can be determined by turning the equipment off and on, the user is encouraged to try to correct the interference by one or more of the following measures:

- Reorient or relocate the receiving antenna.
- Increase the separation between the equipment and receiver.
- Connect the equipment into an outlet on a circuit different from that to which the receiver is connected.
- Consult the dealer or an experienced radio/TV technician for help

This device complies with part 15 of the FCC rules. Operation is subject to the following two conditions (1) this device may not cause harmful interference, and (2) this device must accept any interference received, including interference that may cause undesired operation.

This equipment complies with FCC radiation exposure limits set forth for an uncontrolled environment. This equipment should be installed and operated with minimum distance 20cm between the radiator & your body.