

20171114_SystemPerformanceCheck-D2450V2 SN 706

Frequency: 2450 MHz; Duty Cycle: 1:1; Room Ambient Temperature: 24.0°C; Liquid Temperature: 23.0°C

Medium parameters used: $f = 2450$ MHz; $\sigma = 1.962$ S/m; $\epsilon_r = 50.61$; $\rho = 1000$ kg/m³

DASY5 Configuration:

- Area Scan Setting: Find Secondary Maximum Within: 2.0 dB and with a peak SAR value greater than 0.0012W/kg
- Electronics: DAE4 Sn1433; Calibrated: 3/8/2017
- Probe: EX3DV4 - SN3885; ConvF(7.46, 7.46, 7.46); Calibrated: 10/24/2017;
- Sensor-Surface: 2.5mm (Mechanical Surface Detection), Sensor-Surface: 1.4mm (Mechanical Surface Detection)
- Phantom: ELI A v5.0 Vertical; Type: QDOVA002AA; Serial: S/n:1198

Body/Pin=100 mW/Area Scan (8x8x1): Measurement grid: dx=12mm, dy=12mm

Maximum value of SAR (measured) = 6.74 W/kg

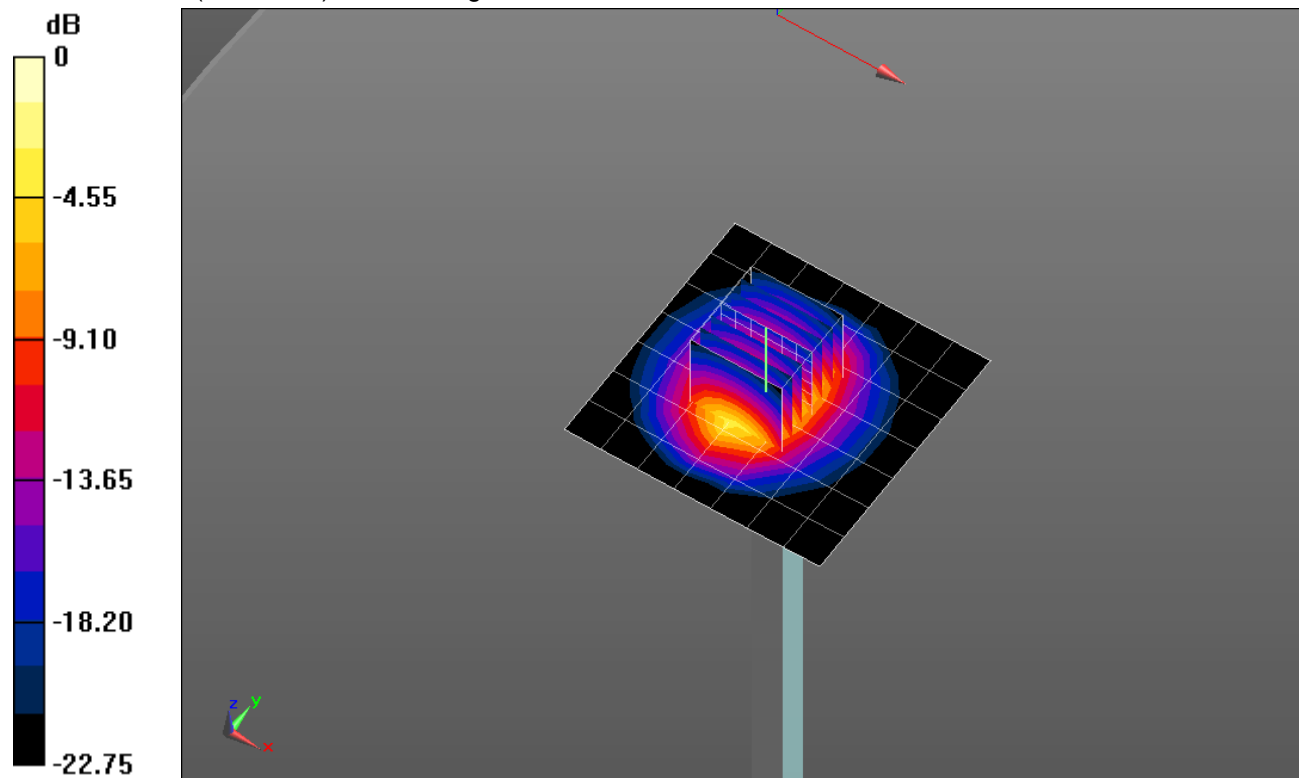
Body/Pin=100 mW/Zoom Scan (7x7x7)/Cube 0: Measurement grid: dx=5mm, dy=5mm, dz=5mm

Reference Value = 59.101 V/m; Power Drift = -0.01 dB

Peak SAR (extrapolated) = 11.2 W/kg

SAR(1 g) = 5.35 W/kg; SAR(10 g) = 2.45 W/kg

Maximum value of SAR (measured) = 9.07 W/kg

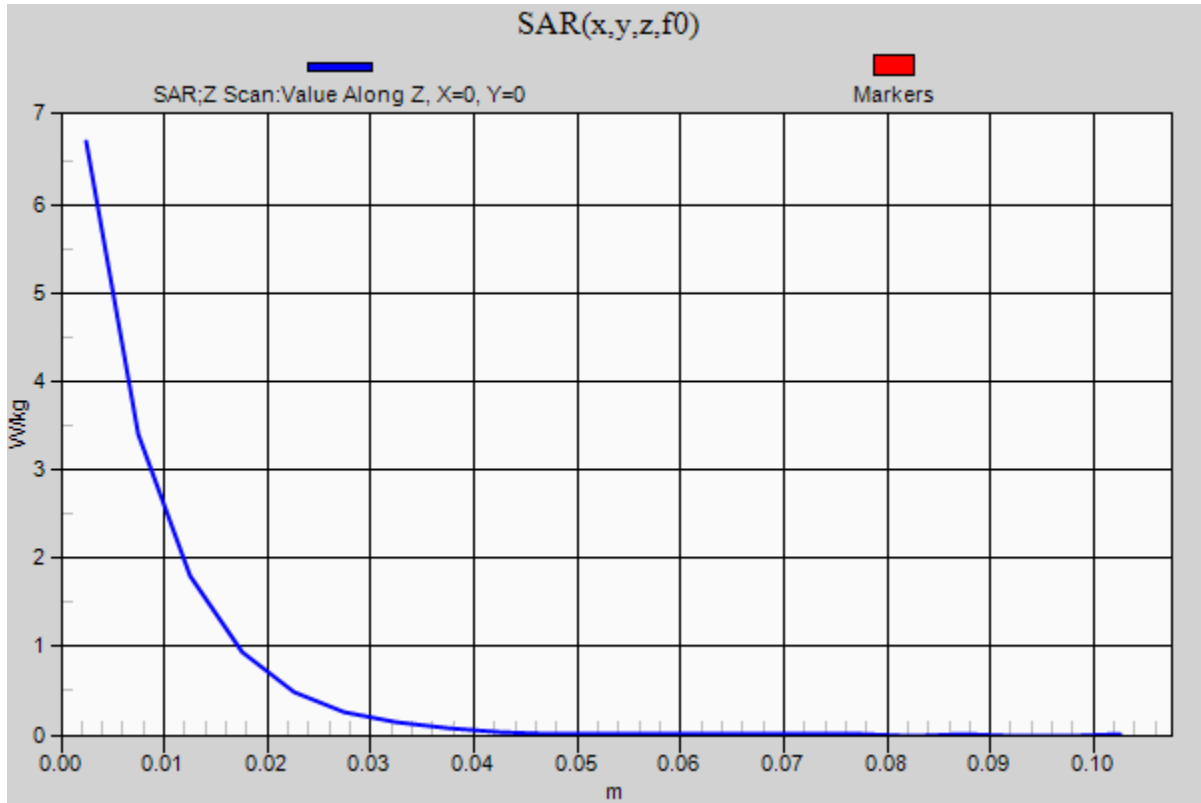


0 dB = 9.07 W/kg = 9.58 dBW/kg

20171114_SystemPerformanceCheck-D2450V2 SN 706

Frequency: 2450 MHz; Duty Cycle: 1:1

Body/Pin=100 mW/Z Scan (1x1x21): Measurement grid: dx=20mm, dy=20mm, dz=5mm
Maximum value of SAR (measured) = 6.71 W/kg



20171106_SystemPerformanceCheck-D2450V2 SN 706

Frequency: 2450 MHz; Duty Cycle: 1:1; Room Ambient Temperature: 24.0°C; Liquid Temperature: 23.0°C

Medium parameters used: $f = 2450$ MHz; $\sigma = 1.912$ S/m; $\epsilon_r = 50.612$; $\rho = 1000$ kg/m³

DASY5 Configuration:

- Area Scan Setting: Find Secondary Maximum Within: 2.0 dB and with a peak SAR value greater than 0.0012W/kg
- Electronics: DAE4 Sn1239; Calibrated: 7/27/2017
- Probe: EX3DV4 - SN3902; ConvF(7.89, 7.89, 7.89); Calibrated: 5/30/2017;
- Sensor-Surface: 2.5mm (Mechanical Surface Detection), Sensor-Surface: 1.4mm (Mechanical Surface Detection)
- Phantom: ELI A v5.0; Type: QD OVA 002 AA; Serial: 1194

Body/Pin=100 mW/Area Scan (8x8x1): Measurement grid: dx=12mm, dy=12mm

Maximum value of SAR (measured) = 5.23 W/kg

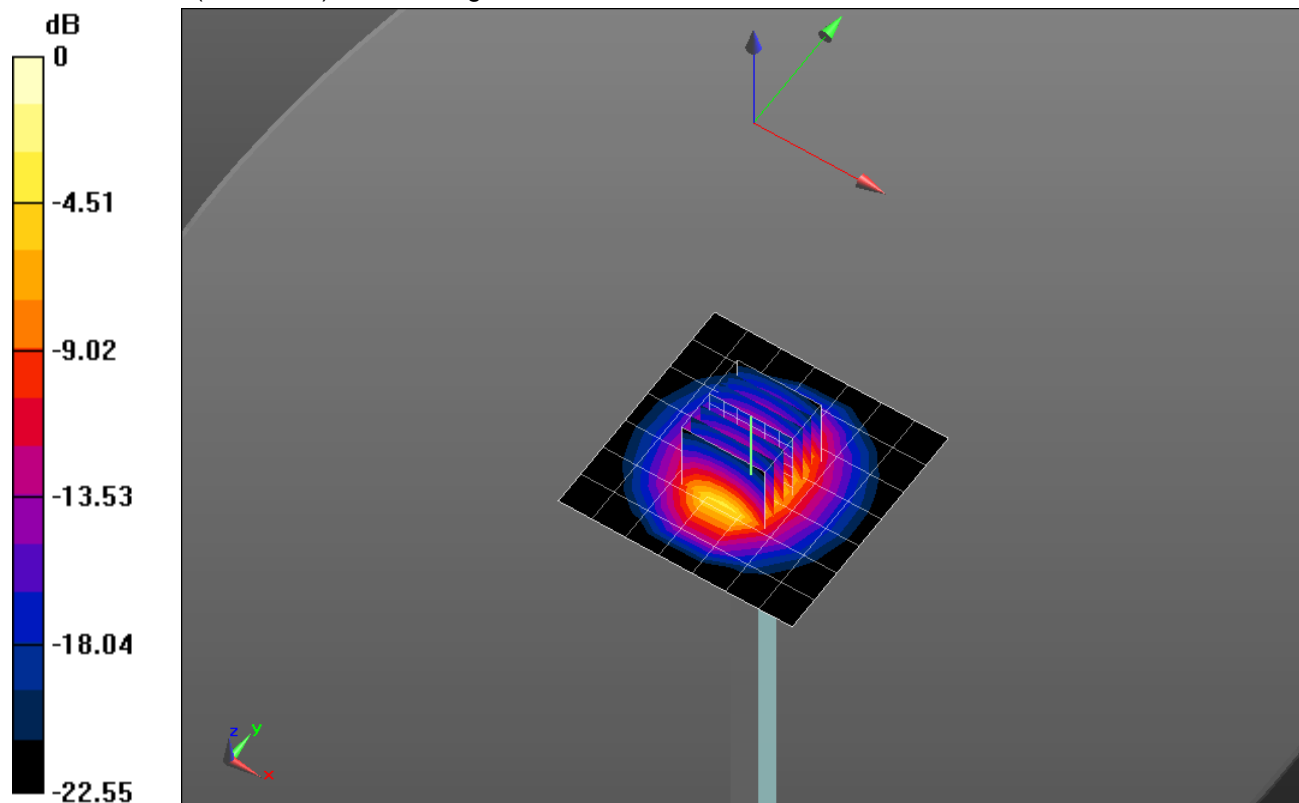
Body/Pin=100 mW/Zoom Scan (7x7x7)/Cube 0: Measurement grid: dx=5mm, dy=5mm, dz=5mm

Reference Value = 62.415 V/m; Power Drift = 0.03 dB

Peak SAR (extrapolated) = 11.1 W/kg

SAR(1 g) = 5.18 W/kg; SAR(10 g) = 2.38 W/kg

Maximum value of SAR (measured) = 8.87 W/kg

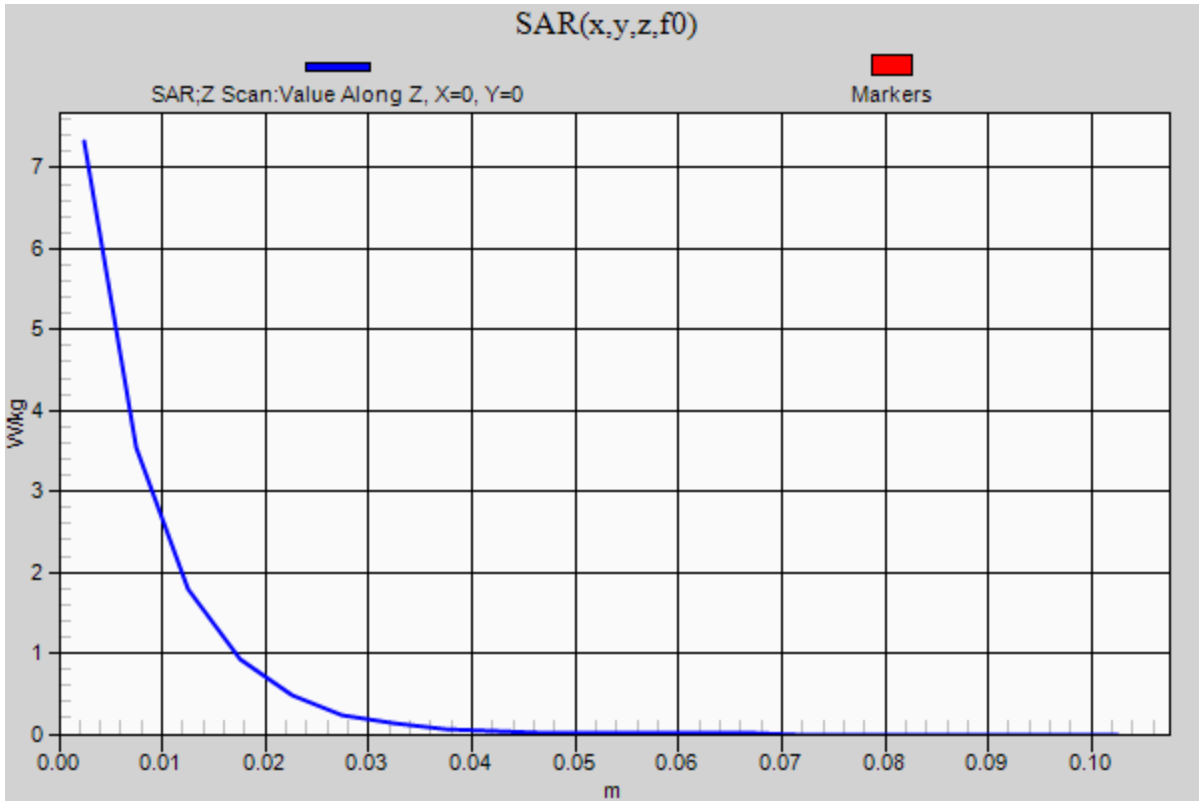


0 dB = 8.87 W/kg = 9.48 dBW/kg

20171106_SystemPerformanceCheck-D2450V2 SN 706

Frequency: 2450 MHz; Duty Cycle: 1:1

Body/Pin=100 mW/Z Scan (1x1x21): Measurement grid: dx=20mm, dy=20mm, dz=5mm
Maximum value of SAR (measured) = 7.32 W/kg



20180212_SystemPerformanceCheck-D2450V2 SN 706

Frequency: 2450 MHz; Duty Cycle: 1:1; Room Ambient Temperature: 24.0°C; Liquid Temperature: 23.0°C

Medium parameters used: $f = 2450$ MHz; $\sigma = 1.998$ S/m; $\epsilon_r = 51.548$; $\rho = 1000$ kg/m³

DASY5 Configuration:

- Area Scan Setting: Find Secondary Maximum Within: 2.0 dB and with a peak SAR value greater than 0.0012W/kg
- Electronics: DAE4 Sn1433; Calibrated: 3/8/2017
- Probe: EX3DV4 - SN3885; ConvF(7.46, 7.46, 7.46); Calibrated: 10/24/2017;
- Sensor-Surface: 2.5mm (Mechanical Surface Detection), Sensor-Surface: 1.4mm (Mechanical Surface Detection)
- Phantom: ELI A v5.0 Vertical; Type: QDOVA002AA; Serial: S/n:1198

Body/Pin=100 mW/Area Scan (8x8x1): Measurement grid: dx=12mm, dy=12mm

Maximum value of SAR (measured) = 6.43 W/kg

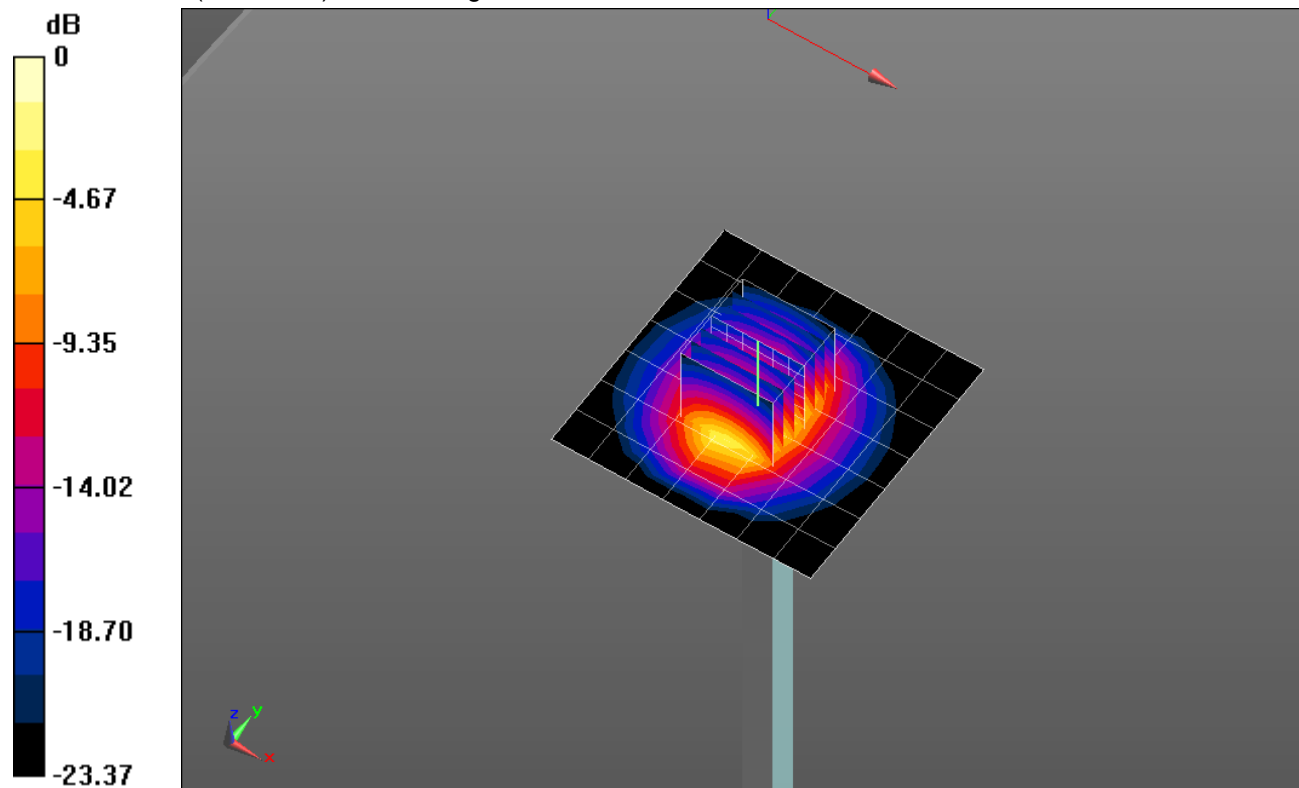
Body/Pin=100 mW/Zoom Scan (7x7x7)/Cube 0: Measurement grid: dx=5mm, dy=5mm, dz=5mm

Reference Value = 60.590 V/m; Power Drift = 0.05 dB

Peak SAR (extrapolated) = 11.3 W/kg

SAR(1 g) = 5.26 W/kg; SAR(10 g) = 2.4 W/kg

Maximum value of SAR (measured) = 8.94 W/kg



0 dB = 8.94 W/kg = 9.51 dBW/kg

20180212_SystemPerformanceCheck-D2450V2 SN 706

Frequency: 2450 MHz; Duty Cycle: 1:1

Body/Pin=100 mW/Z Scan (1x1x21): Measurement grid: dx=20mm, dy=20mm, dz=5mm

Maximum value of SAR (measured) = 7.21 W/kg

