

20171114_SystemPerformanceCheck-D2450V2 SN 706

Frequency: 2450 MHz; Duty Cycle: 1:1; Room Ambient Temperature: 24.0°C; Liquid Temperature: 23.0°C

Medium parameters used: $f = 2450$ MHz; $\sigma = 1.962$ S/m; $\epsilon_r = 50.61$; $\rho = 1000$ kg/m³

DASY5 Configuration:

- Area Scan Setting: Find Secondary Maximum Within: 2.0 dB and with a peak SAR value greater than 0.0012W/kg
- Electronics: DAE4 Sn1433; Calibrated: 3/8/2017
- Probe: EX3DV4 - SN3885; ConvF(7.46, 7.46, 7.46); Calibrated: 10/24/2017;
- Sensor-Surface: 2.5mm (Mechanical Surface Detection), Sensor-Surface: 1.4mm (Mechanical Surface Detection)
- Phantom: ELI A v5.0 Vertical; Type: QDOVA002AA; Serial: S/n:1198

Body/Pin=100 mW/Area Scan (8x8x1): Measurement grid: dx=12mm, dy=12mm

Maximum value of SAR (measured) = 6.74 W/kg

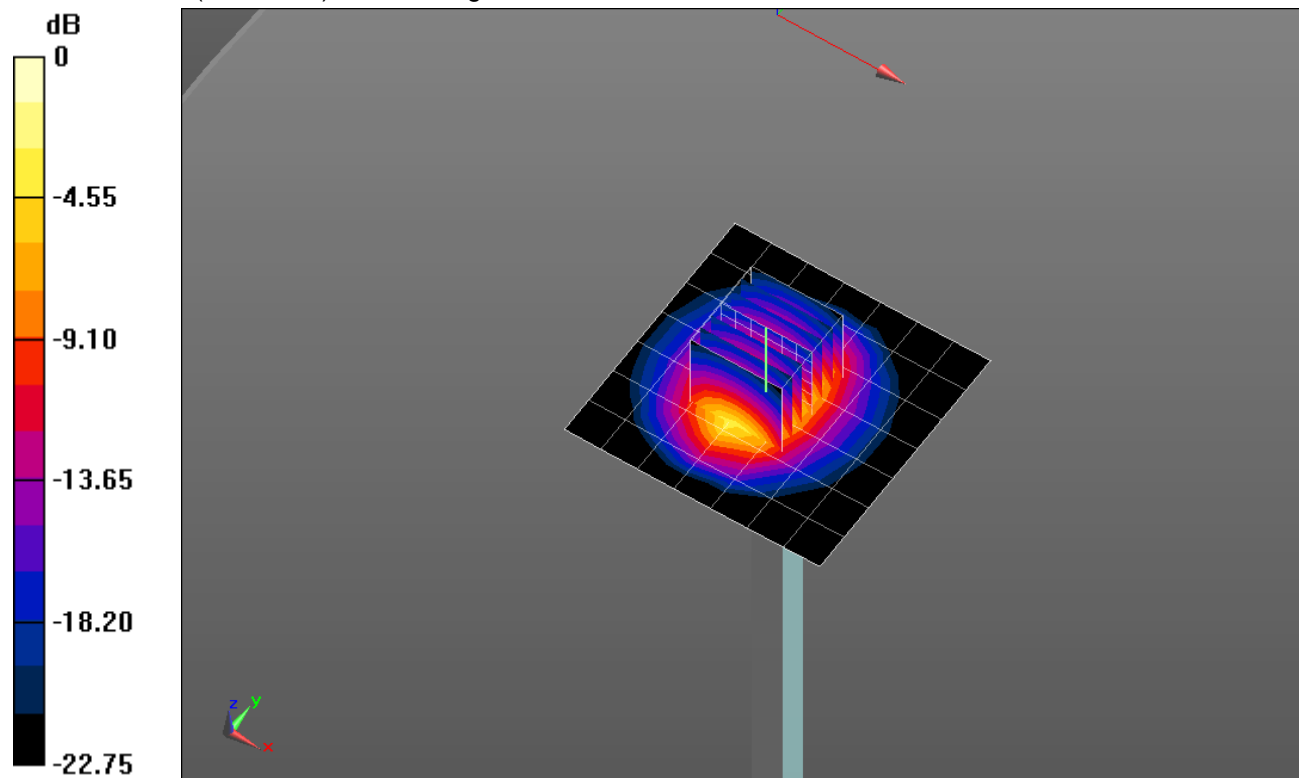
Body/Pin=100 mW/Zoom Scan (7x7x7)/Cube 0: Measurement grid: dx=5mm, dy=5mm, dz=5mm

Reference Value = 59.101 V/m; Power Drift = -0.01 dB

Peak SAR (extrapolated) = 11.2 W/kg

SAR(1 g) = 5.35 W/kg; SAR(10 g) = 2.45 W/kg

Maximum value of SAR (measured) = 9.07 W/kg

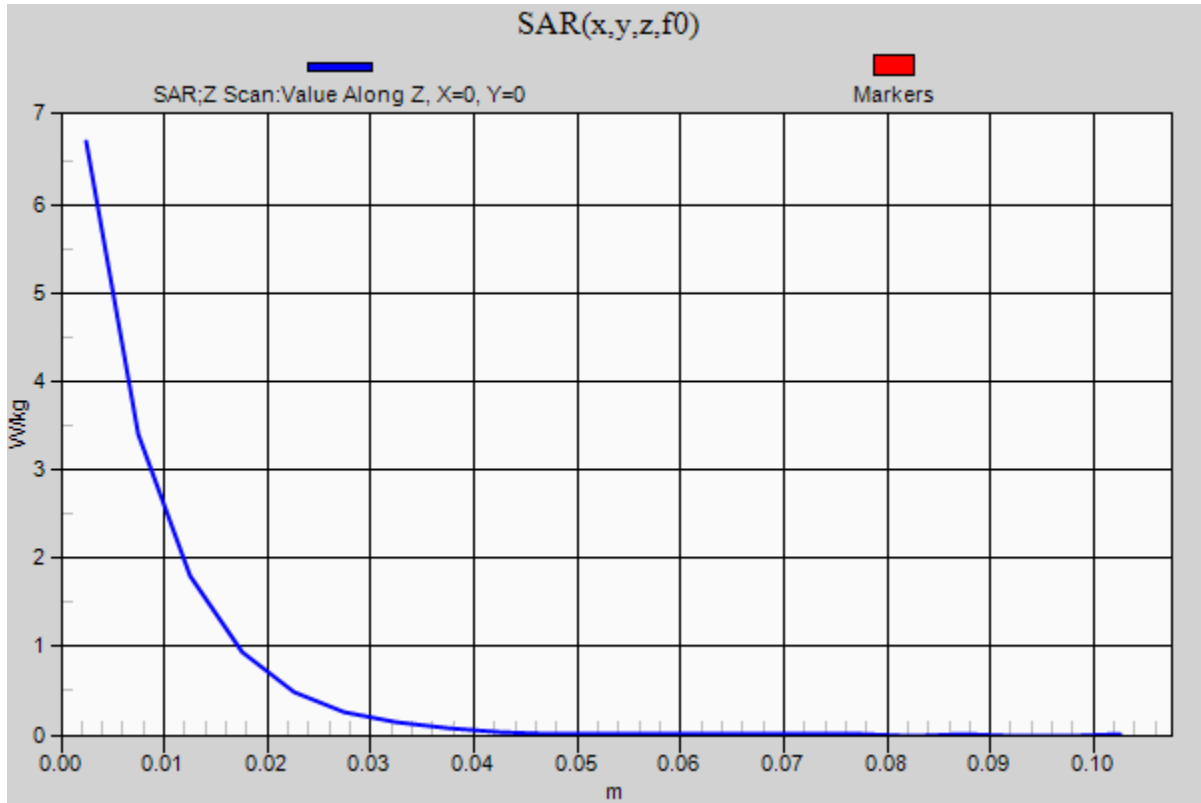


0 dB = 9.07 W/kg = 9.58 dBW/kg

20171114_SystemPerformanceCheck-D2450V2 SN 706

Frequency: 2450 MHz; Duty Cycle: 1:1

Body/Pin=100 mW/Z Scan (1x1x21): Measurement grid: dx=20mm, dy=20mm, dz=5mm
Maximum value of SAR (measured) = 6.71 W/kg



20171128_SystemPerformanceCheck-D5GHzV2 SN 1138

Frequency: 5600 MHz; Duty Cycle: 1:1; Room Ambient Temperature: 24.0°C; Liquid Temperature: 23.0°C

Medium parameters used: $f = 5600$ MHz; $\sigma = 5.789$ S/m; $\epsilon_r = 49.94$; $\rho = 1000$ kg/m³

DASY5 Configuration:

- Area Scan Setting: Find Secondary Maximum Within: 2.0 dB and with a peak SAR value greater than 0.0012W/kg
- Electronics: DAE4 Sn1433; Calibrated: 3/8/2017
- Probe: EX3DV4 - SN3885; ConvF(4.08, 4.08, 4.08); Calibrated: 10/24/2017;
- Sensor-Surface: 1.4mm (Mechanical Surface Detection)
- Phantom: ELI B v4.0; Type: QDOVA002AA; Serial: 1196

Body/5.6 GHz, Pin=100mW/Area Scan (7x7x1): Measurement grid: dx=10mm, dy=10mm

Maximum value of SAR (measured) = 19.7 W/kg

Body/5.6 GHz, Pin=100mW/Zoom Scan (8x8x7)/Cube 0: Measurement grid: dx=4mm, dy=4mm,

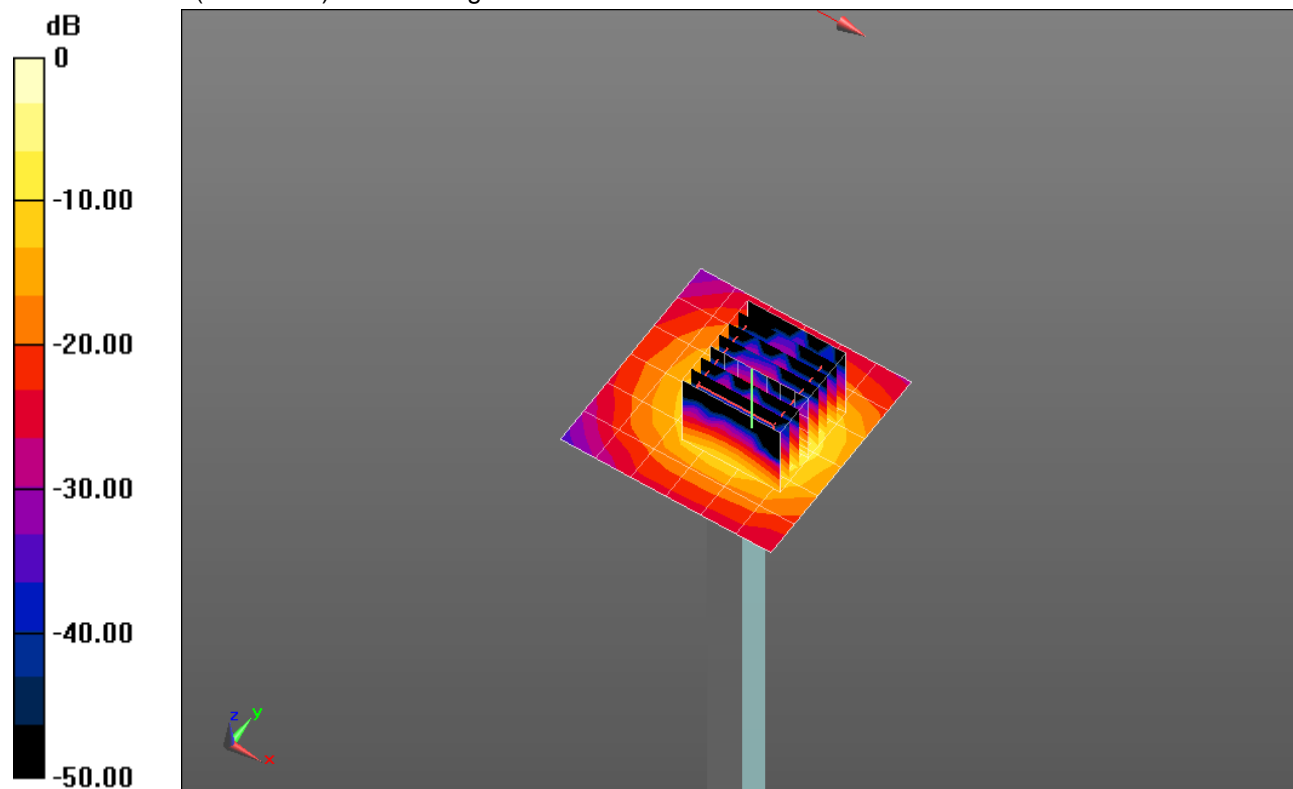
dz=1.4mm

Reference Value = 39.242 V/m; Power Drift = -0.06 dB

Peak SAR (extrapolated) = 36.0 W/kg

SAR(1 g) = 8.51 W/kg; SAR(10 g) = 2.35 W/kg

Maximum value of SAR (measured) = 21.1 W/kg

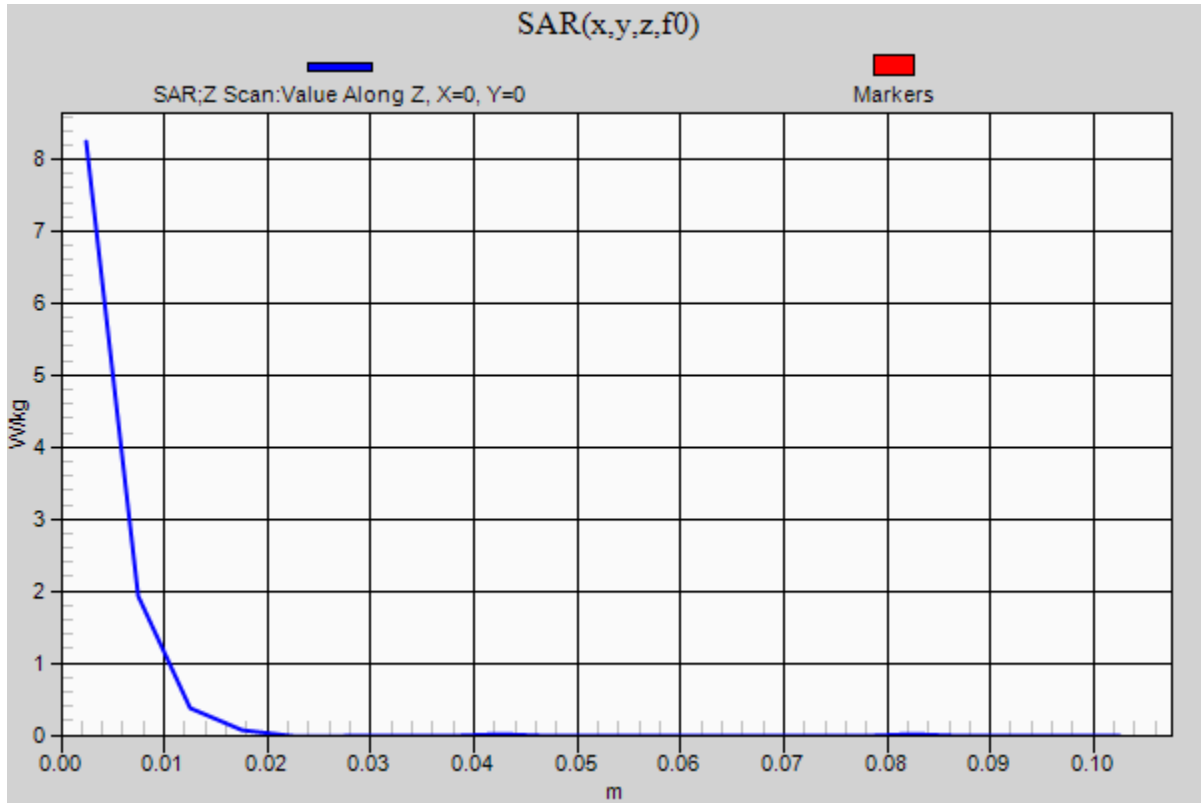


0 dB = 21.1 W/kg = 13.24 dBW/kg

20171128_SystemPerformanceCheck-D5GHzV2 SN 1138

Frequency: 5600 MHz; Duty Cycle: 1:1

Body/5.6 GHz, Pin=100mW/Z Scan (1x1x21): Measurement grid: dx=20mm, dy=20mm, dz=5mm
Maximum value of SAR (measured) = 8.24 W/kg



20171106_SystemPerformanceCheck-D2450V2 SN 706

Frequency: 2450 MHz; Duty Cycle: 1:1; Room Ambient Temperature: 24.0°C; Liquid Temperature: 23.0°C

Medium parameters used: $f = 2450$ MHz; $\sigma = 1.912$ S/m; $\epsilon_r = 50.612$; $\rho = 1000$ kg/m³

DASY5 Configuration:

- Area Scan Setting: Find Secondary Maximum Within: 2.0 dB and with a peak SAR value greater than 0.0012W/kg
- Electronics: DAE4 Sn1239; Calibrated: 7/27/2017
- Probe: EX3DV4 - SN3902; ConvF(7.89, 7.89, 7.89); Calibrated: 5/30/2017;
- Sensor-Surface: 2.5mm (Mechanical Surface Detection), Sensor-Surface: 1.4mm (Mechanical Surface Detection)
- Phantom: ELI A v5.0; Type: QD OVA 002 AA; Serial: 1194

Body/Pin=100 mW/Area Scan (8x8x1): Measurement grid: dx=12mm, dy=12mm

Maximum value of SAR (measured) = 5.23 W/kg

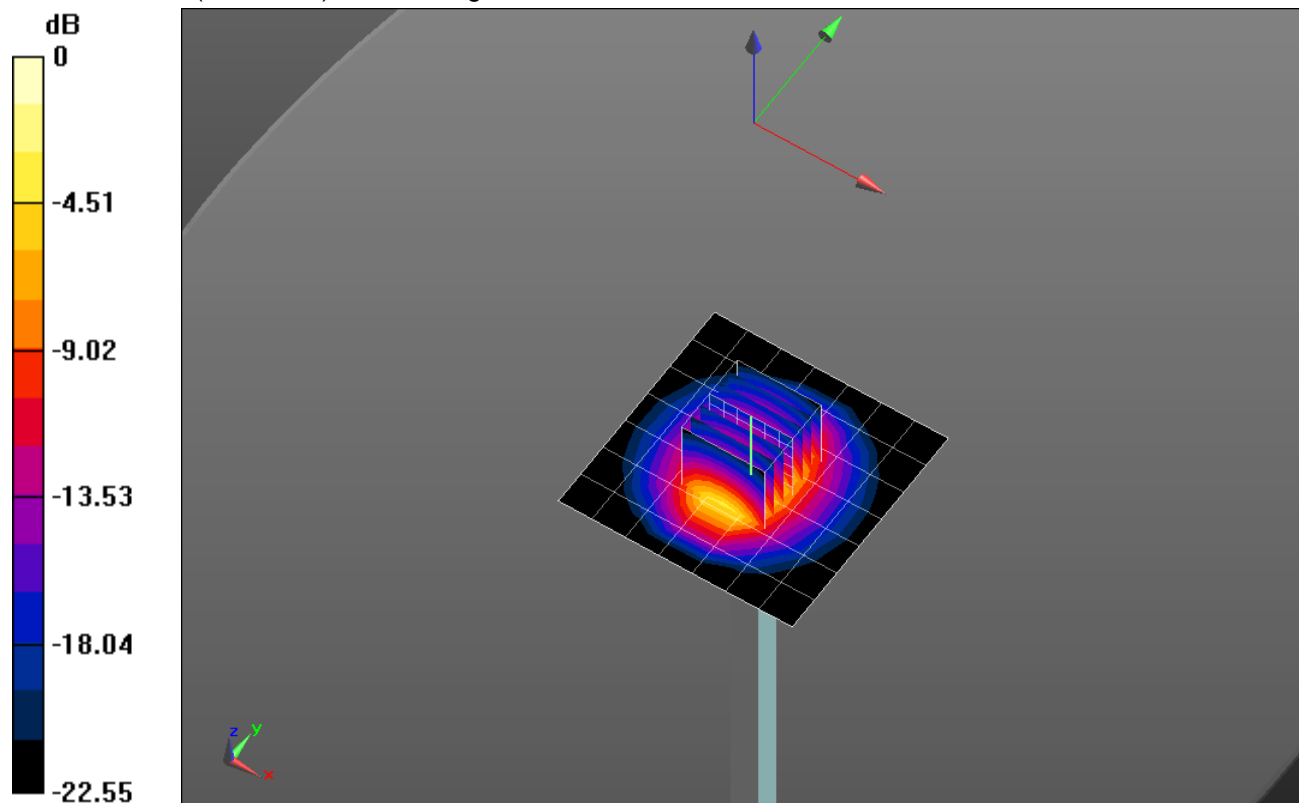
Body/Pin=100 mW/Zoom Scan (7x7x7)/Cube 0: Measurement grid: dx=5mm, dy=5mm, dz=5mm

Reference Value = 62.415 V/m; Power Drift = 0.03 dB

Peak SAR (extrapolated) = 11.1 W/kg

SAR(1 g) = 5.18 W/kg; SAR(10 g) = 2.38 W/kg

Maximum value of SAR (measured) = 8.87 W/kg

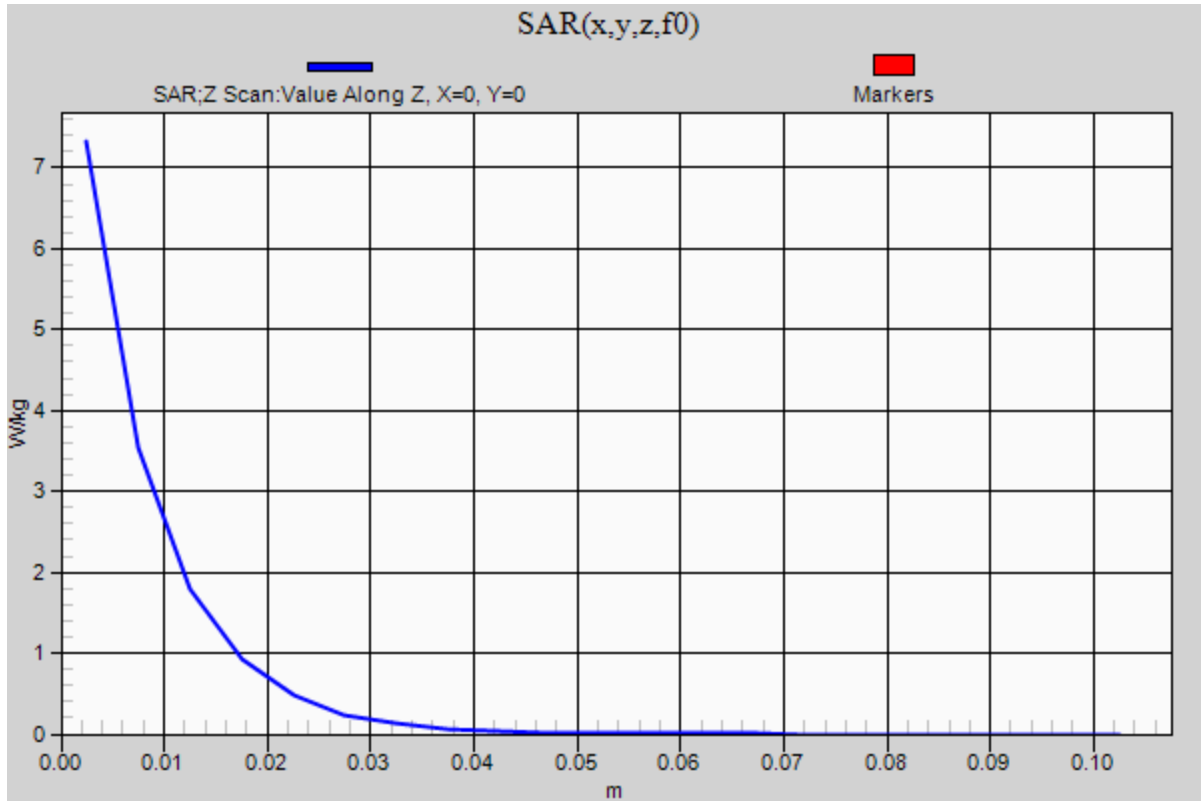


0 dB = 8.87 W/kg = 9.48 dBW/kg

20171106_SystemPerformanceCheck-D2450V2 SN 706

Frequency: 2450 MHz; Duty Cycle: 1:1

Body/Pin=100 mW/Z Scan (1x1x21): Measurement grid: dx=20mm, dy=20mm, dz=5mm
Maximum value of SAR (measured) = 7.32 W/kg



20171112_SystemPerformanceCheck-D5GHzV2 SN 1003

Frequency: 5200 MHz; Duty Cycle: 1:1; Room Ambient Temperature: 24.0°C; Liquid Temperature: 23.0°C

Medium parameters used: $f = 5200$ MHz; $\sigma = 5.292$ S/m; $\epsilon_r = 47.817$; $\rho = 1000$ kg/m³

DASY5 Configuration:

- Area Scan Setting: Find Secondary Maximum Within: 2.0 dB and with a peak SAR value greater than 0.0012W/kg
- Electronics: DAE4 Sn1239; Calibrated: 7/27/2017
- Probe: EX3DV4 - SN3902; ConvF(4.89, 4.89, 4.89); Calibrated: 5/30/2017;
- Sensor-Surface: 1.4mm (Mechanical Surface Detection)
- Phantom: ELI B v5.0; Type: QD OVA 002 AA; Serial: 1196

Body/5.2 GHz, Pin=100mW/Area Scan (7x7x1): Measurement grid: dx=10mm, dy=10mm

Maximum value of SAR (measured) = 19.0 W/kg

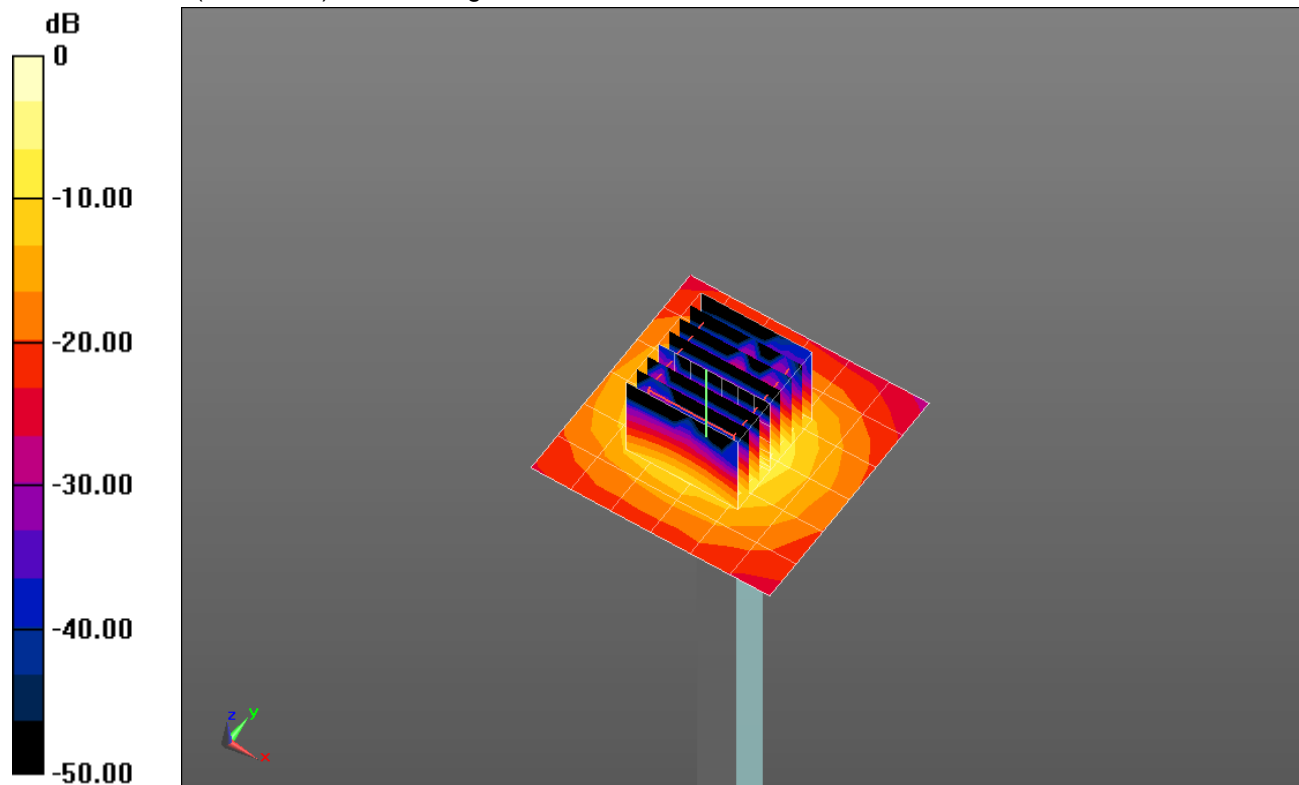
Body/5.2 GHz, Pin=100mW/Zoom Scan (8x8x7)/Cube 0: Measurement grid: dx=4mm, dy=4mm, dz=1.4mm

Reference Value = 51.975 V/m; Power Drift = -0.03 dB

Peak SAR (extrapolated) = 33.6 W/kg

SAR(1 g) = 7.67 W/kg; SAR(10 g) = 2.16 W/kg

Maximum value of SAR (measured) = 18.8 W/kg

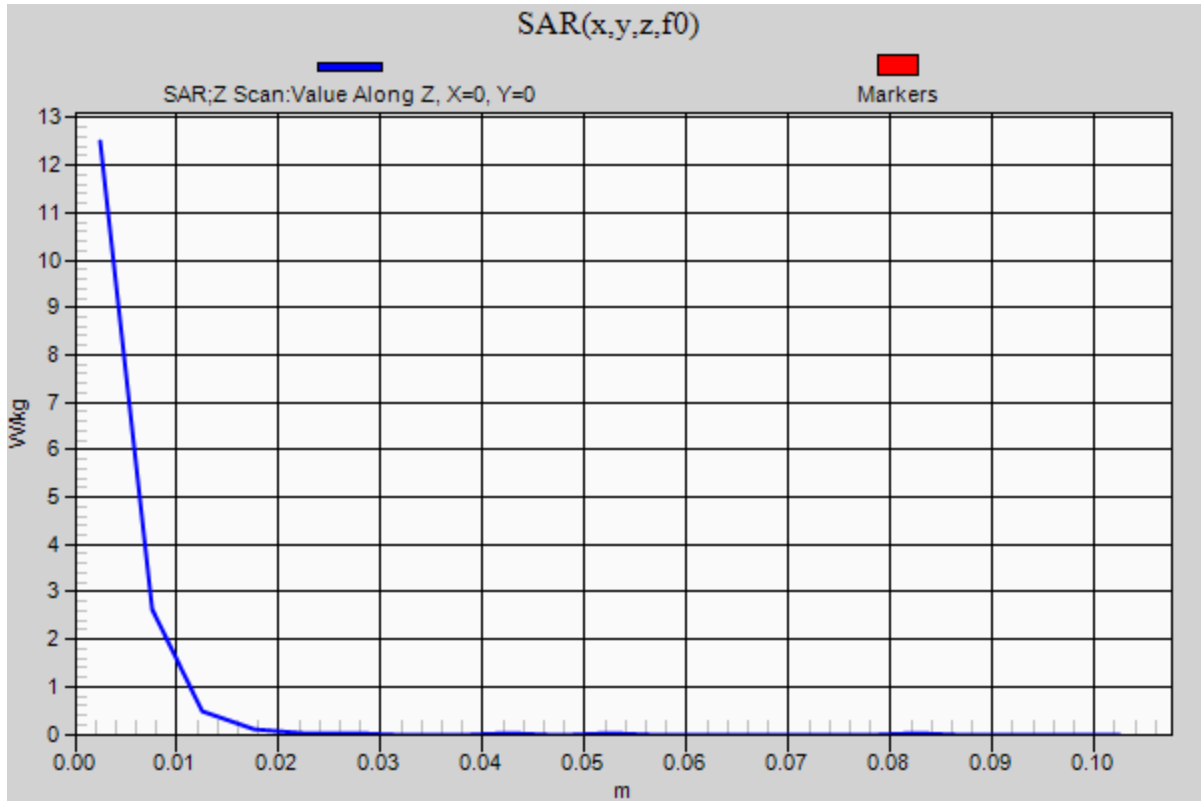


0 dB = 18.8 W/kg = 12.74 dBW/kg

20171112_SystemPerformanceCheck-D5GHzV2 SN 1003

Frequency: 5200 MHz; Duty Cycle: 1:1

Body/5.2 GHz, Pin=100mW/Z Scan (1x1x21): Measurement grid: dx=20mm, dy=20mm, dz=5mm
Maximum value of SAR (measured) = 12.5 W/kg



20180212_SystemPerformanceCheck-D2450V2 SN 706

Frequency: 2450 MHz; Duty Cycle: 1:1; Room Ambient Temperature: 24.0°C; Liquid Temperature: 23.0°C

Medium parameters used: $f = 2450$ MHz; $\sigma = 1.998$ S/m; $\epsilon_r = 51.548$; $\rho = 1000$ kg/m³

DASY5 Configuration:

- Area Scan Setting: Find Secondary Maximum Within: 2.0 dB and with a peak SAR value greater than 0.0012W/kg
- Electronics: DAE4 Sn1433; Calibrated: 3/8/2017
- Probe: EX3DV4 - SN3885; ConvF(7.46, 7.46, 7.46); Calibrated: 10/24/2017;
- Sensor-Surface: 2.5mm (Mechanical Surface Detection), Sensor-Surface: 1.4mm (Mechanical Surface Detection)
- Phantom: ELI A v5.0 Vertical; Type: QDOVA002AA; Serial: S/n:1198

Body/Pin=100 mW/Area Scan (8x8x1): Measurement grid: dx=12mm, dy=12mm

Maximum value of SAR (measured) = 6.43 W/kg

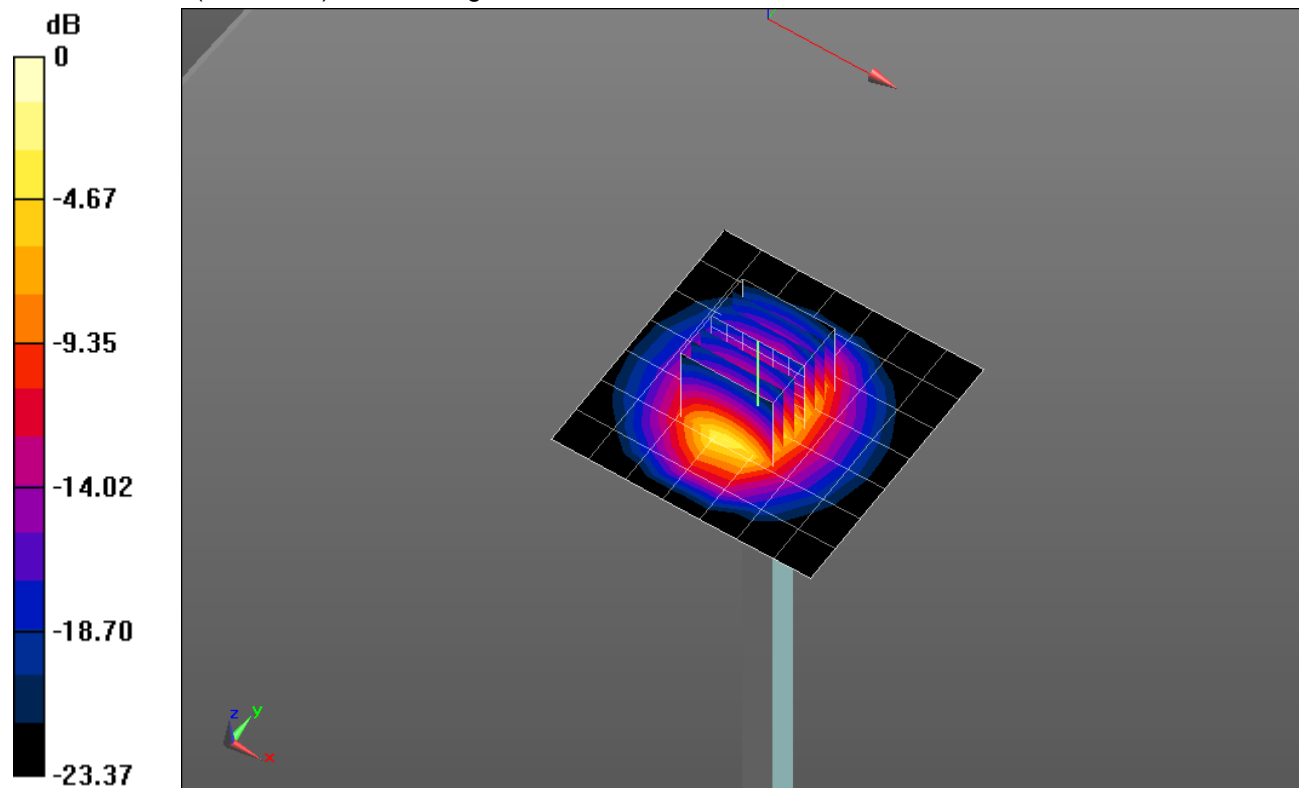
Body/Pin=100 mW/Zoom Scan (7x7x7)/Cube 0: Measurement grid: dx=5mm, dy=5mm, dz=5mm

Reference Value = 60.590 V/m; Power Drift = 0.05 dB

Peak SAR (extrapolated) = 11.3 W/kg

SAR(1 g) = 5.26 W/kg; SAR(10 g) = 2.4 W/kg

Maximum value of SAR (measured) = 8.94 W/kg

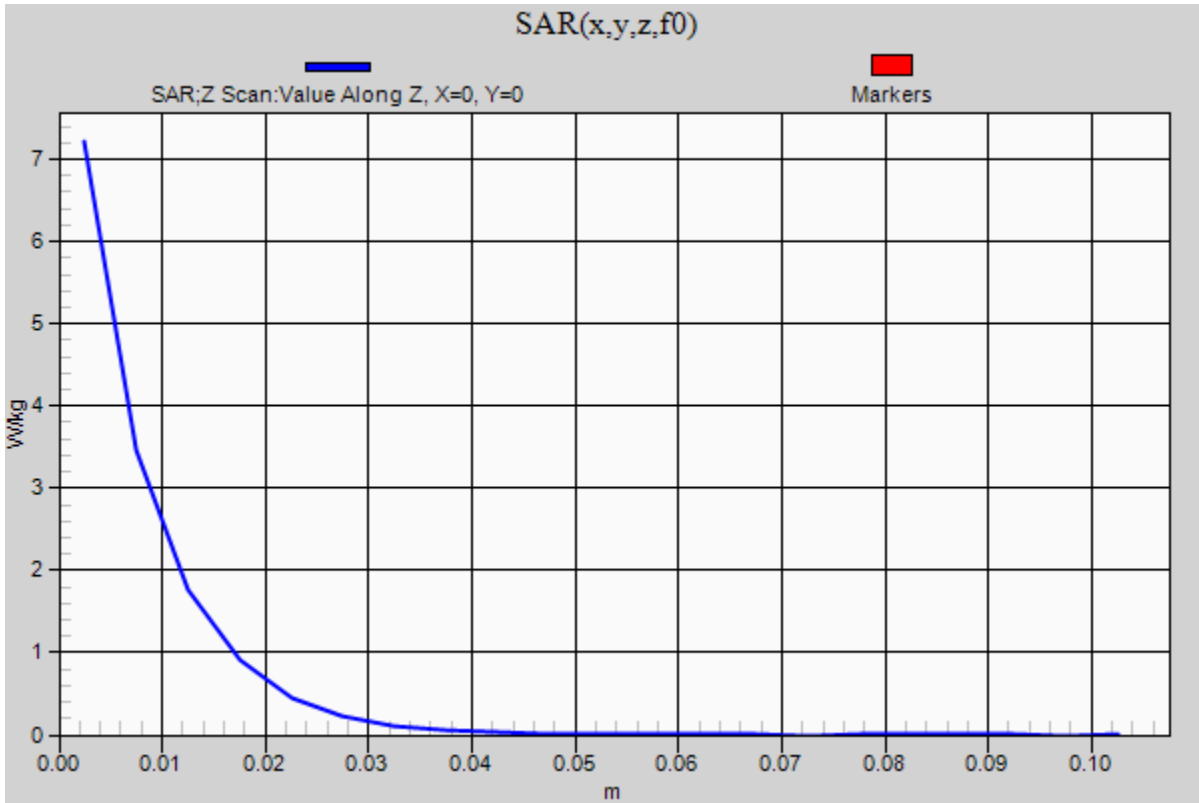


0 dB = 8.94 W/kg = 9.51 dBW/kg

20180212_SystemPerformanceCheck-D2450V2 SN 706

Frequency: 2450 MHz; Duty Cycle: 1:1

Body/Pin=100 mW/Z Scan (1x1x21): Measurement grid: dx=20mm, dy=20mm, dz=5mm
Maximum value of SAR (measured) = 7.21 W/kg



20180321_SystemPerformanceCheck-D5GHzV2 SN 1168

Frequency: 5800 MHz; Duty Cycle: 1:1; Room Ambient Temperature: 24.0°C; Liquid Temperature: 23.0°C

Medium parameters used: $f = 5800$ MHz; $\sigma = 5.792$ S/m; $\epsilon_r = 47.171$; $\rho = 1000$ kg/m³

DASY5 Configuration:

- Area Scan Setting: Find Secondary Maximum Within: 2.0 dB and with a peak SAR value greater than 0.0012W/kg
- Electronics: DAE4 Sn1357; Calibrated: 2/8/2018
- Probe: EX3DV4 - SN3990; ConvF(4.58, 4.58, 4.58); Calibrated: 2/14/2018;
- Sensor-Surface: 1.4mm (Mechanical Surface Detection)
- Phantom: ELI B v4.0; Type: QDOVA002AA; Serial: 1196

Body/5.8 GHz, Pin=100mW/Area Scan (7x7x1): Measurement grid: dx=10mm, dy=10mm

Maximum value of SAR (measured) = 13.1 W/kg

Body/5.8 GHz, Pin=100mW/Zoom Scan (8x8x7)/Cube 0: Measurement grid: dx=4mm, dy=4mm,

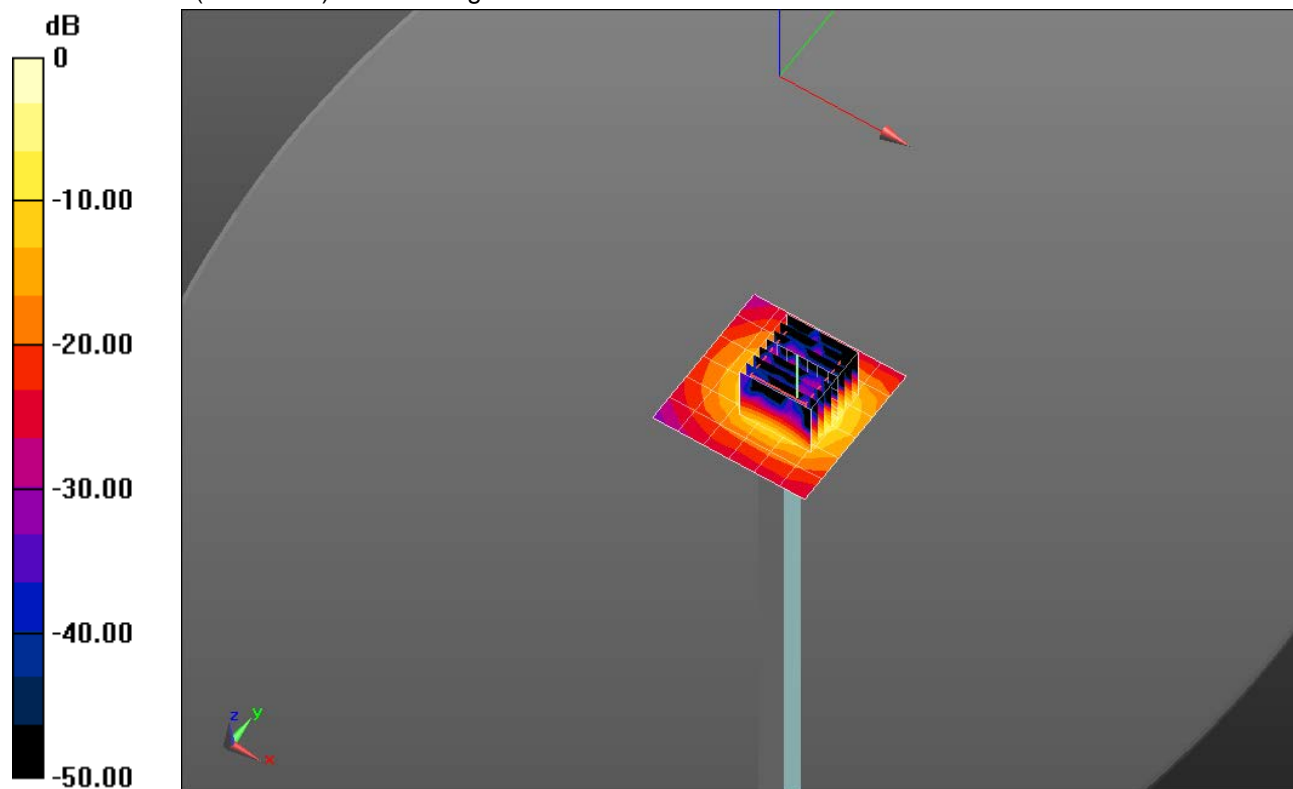
dz=1.4mm

Reference Value = 35.518 V/m; Power Drift = -0.18 dB

Peak SAR (extrapolated) = 26.9 W/kg

SAR(1 g) = 6.08 W/kg; SAR(10 g) = 1.7 W/kg

Maximum value of SAR (measured) = 15.2 W/kg

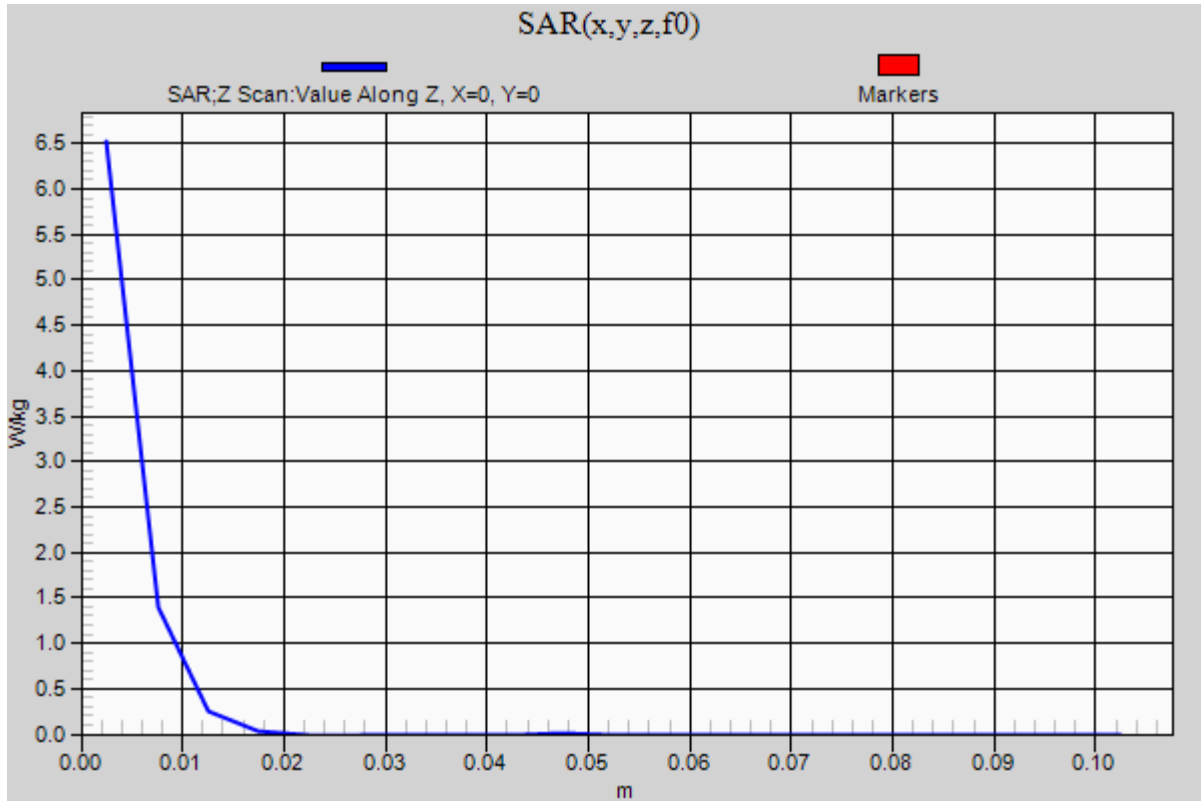


0 dB = 15.2 W/kg = 11.82 dBW/kg

20180321_SystemPerformanceCheck-D5GHzV2 SN 1168

Frequency: 5800 MHz; Duty Cycle: 1:1

Body/5.8 GHz, Pin=100mW/Z Scan (1x1x21): Measurement grid: dx=20mm, dy=20mm, dz=5mm
Maximum value of SAR (measured) = 6.52 W/kg



20180326_SystemPerformanceCheck-D5GHzV2 SN 1138

Frequency: 5200 MHz; Duty Cycle: 1:1; Room Ambient Temperature: 24.0°C; Liquid Temperature: 23.0°C

Medium parameters used: $f = 5200$ MHz; $\sigma = 5.216$ S/m; $\epsilon_r = 47.222$; $\rho = 1000$ kg/m³

DASY5 Configuration:

- Area Scan Setting: Find Secondary Maximum Within: 2.0 dB and with a peak SAR value greater than 0.0012W/kg
- Electronics: DAE4 Sn1357; Calibrated: 2/8/2018
- Probe: EX3DV4 - SN3990; ConvF(5.01, 5.01, 5.01); Calibrated: 2/14/2018;
- Sensor-Surface: 1.4mm (Mechanical Surface Detection)
- Phantom: ELI B v4.0; Type: QDOVA002AA; Serial: 1196

Body/5.2 GHz, Pin=100mW/Area Scan (7x7x1): Measurement grid: dx=10mm, dy=10mm

Maximum value of SAR (measured) = 18.9 W/kg

Body/5.2 GHz, Pin=100mW/Zoom Scan (8x8x7)/Cube 0: Measurement grid: dx=4mm, dy=4mm,

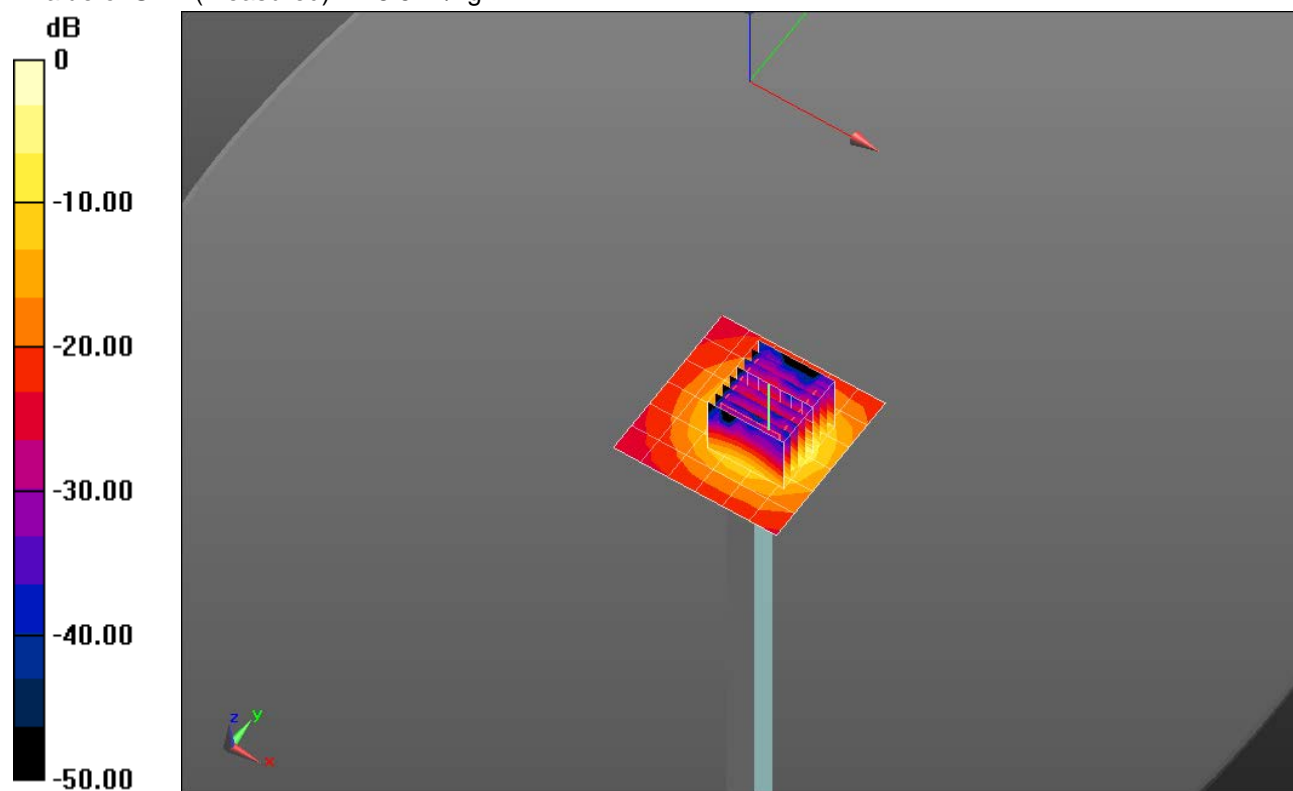
dz=1.4mm

Reference Value = 38.151 V/m; Power Drift = -0.13 dB

Peak SAR (extrapolated) = 30.4 W/kg

SAR(1 g) = 8.01 W/kg; SAR(10 g) = 2.25 W/kg

Maximum value of SAR (measured) = 18.5 W/kg

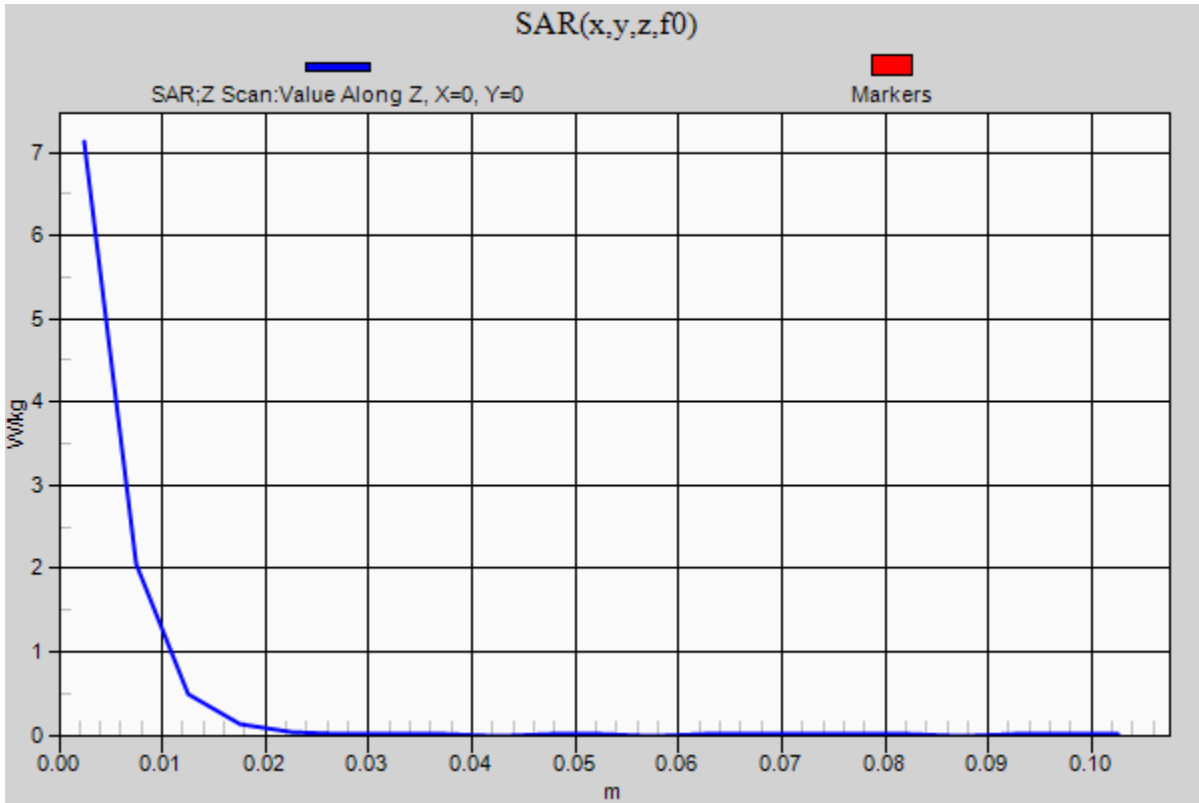


0 dB = 18.5 W/kg = 12.67 dBW/kg

20180326_SystemPerformanceCheck-D5GHzV2 SN 1138

Frequency: 5200 MHz; Duty Cycle: 1:1

Body/5.2 GHz, Pin=100mW/Z Scan (1x1x21): Measurement grid: dx=20mm, dy=20mm, dz=5mm
Maximum value of SAR (measured) = 7.12 W/kg



20180212_SystemPerformanceCheck-D5GHzV2 SN 1138

Frequency: 5800 MHz; Duty Cycle: 1:1; Room Ambient Temperature: 24.0°C; Liquid Temperature: 23.0°C

Medium parameters used: $f = 5800$ MHz; $\sigma = 6.206$ S/m; $\epsilon_r = 48.187$; $\rho = 1000$ kg/m³

DASY5 Configuration:

- Area Scan Setting: Find Secondary Maximum Within: 2.0 dB and with a peak SAR value greater than 0.0012W/kg
- Electronics: DAE4 Sn1239; Calibrated: 7/27/2017
- Probe: EX3DV4 - SN3902; ConvF(4.49, 4.49, 4.49); Calibrated: 5/30/2017;
- Sensor-Surface: 1.4mm (Mechanical Surface Detection (Locations From Previous Scan Used)), Sensor-Surface: 1.4mm (Mechanical Surface Detection)
- Phantom: ELI B v5.0; Type: QD OVA 002 AA; Serial: 1196

Body/5.8 GHz, Pin=100mW/Area Scan (7x7x1): Measurement grid: dx=10mm, dy=10mm

Maximum value of SAR (measured) = 18.8 W/kg

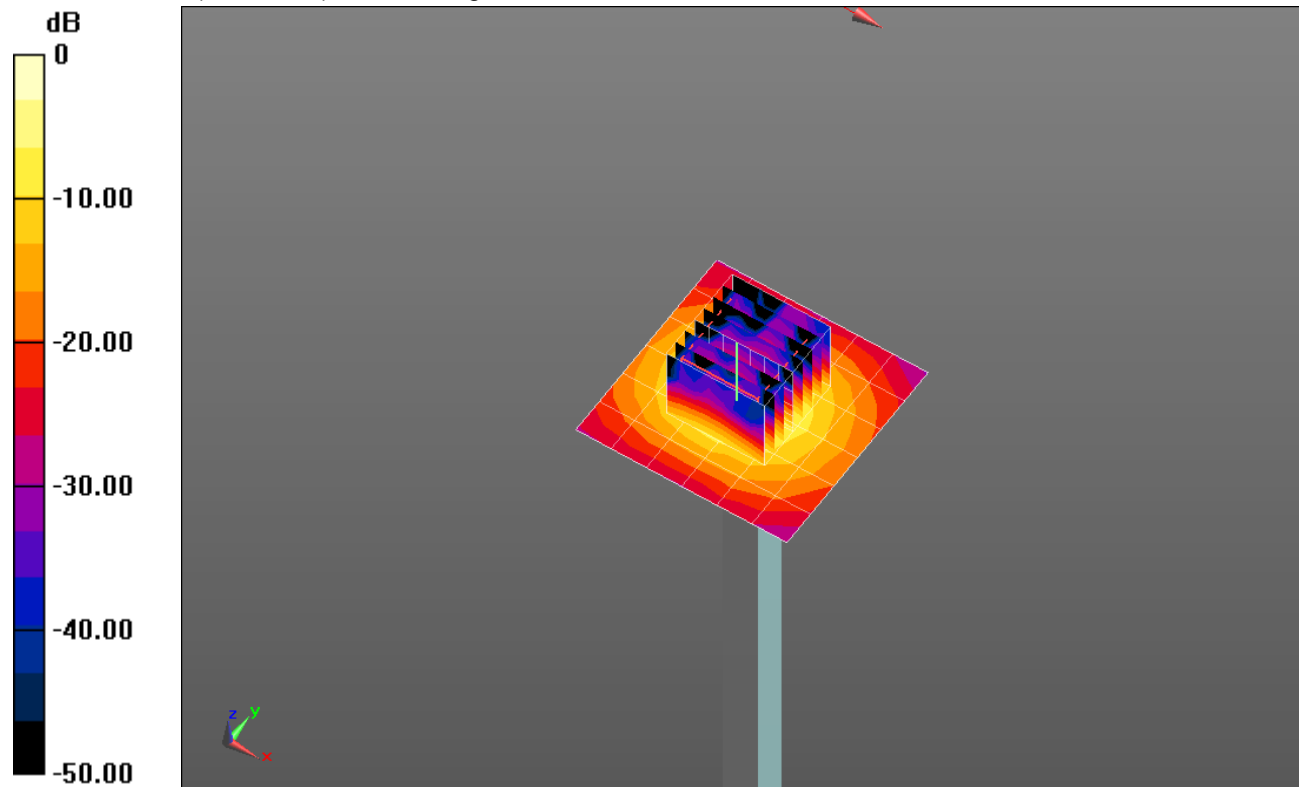
Body/5.8 GHz, Pin=100mW/Zoom Scan (8x8x7)/Cube 0: Measurement grid: dx=4mm, dy=4mm, dz=1.4mm

Reference Value = 46.786 V/m; Power Drift = 0.09 dB

Peak SAR (extrapolated) = 37.2 W/kg

SAR(1 g) = 7.42 W/kg; SAR(10 g) = 2.09 W/kg

Maximum value of SAR (measured) = 19.2 W/kg

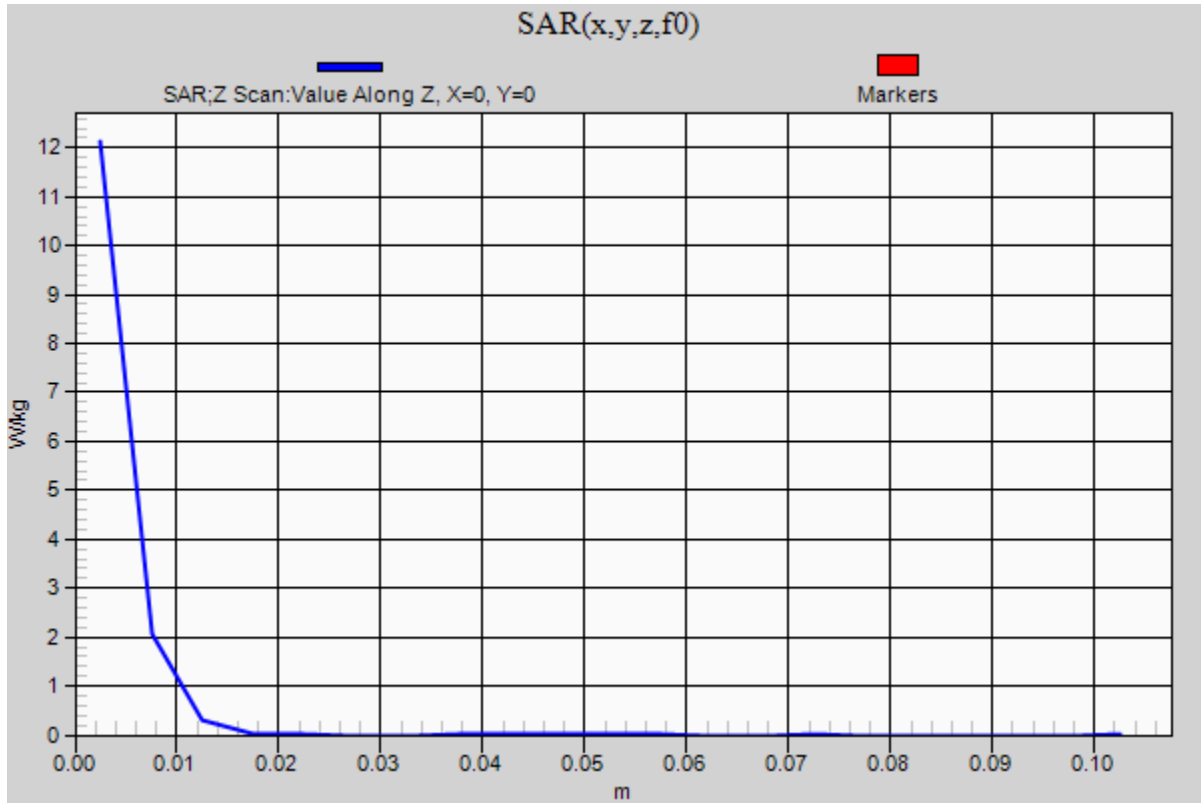


0 dB = 19.2 W/kg = 12.83 dBW/kg

20180212_SystemPerformanceCheck-D5GHzV2 SN 1138

Frequency: 5800 MHz; Duty Cycle: 1:1

Body/5.8 GHz, Pin=100mW/Z Scan (1x1x21): Measurement grid: dx=20mm, dy=20mm, dz=5mm
Maximum value of SAR (measured) = 12.1 W/kg



20180321_SystemPerformanceCheck-D2450V2 SN 748

Frequency: 2450 MHz; Duty Cycle: 1:1; Room Ambient Temperature: 24.0°C; Liquid Temperature: 23.0°C

Medium parameters used: $f = 2450$ MHz; $\sigma = 1.932$ S/m; $\epsilon_r = 51.833$; $\rho = 1000$ kg/m³

DASY5 Configuration:

- Area Scan Setting: Find Secondary Maximum Within: 2.0 dB and with a peak SAR value greater than 0.0012W/kg
- Electronics: DAE4 Sn1239; Calibrated: 7/27/2017
- Probe: EX3DV4 - SN3902; ConvF(7.89, 7.89, 7.89); Calibrated: 5/30/2017;
- Sensor-Surface: 2.5mm (Mechanical Surface Detection)
- Phantom: ELI B v5.0; Type: QD OVA 002 AA; Serial: 1196

Body/Pin=100 mW/Area Scan (8x8x1): Measurement grid: dx=12mm, dy=12mm

Maximum value of SAR (measured) = 6.26 W/kg

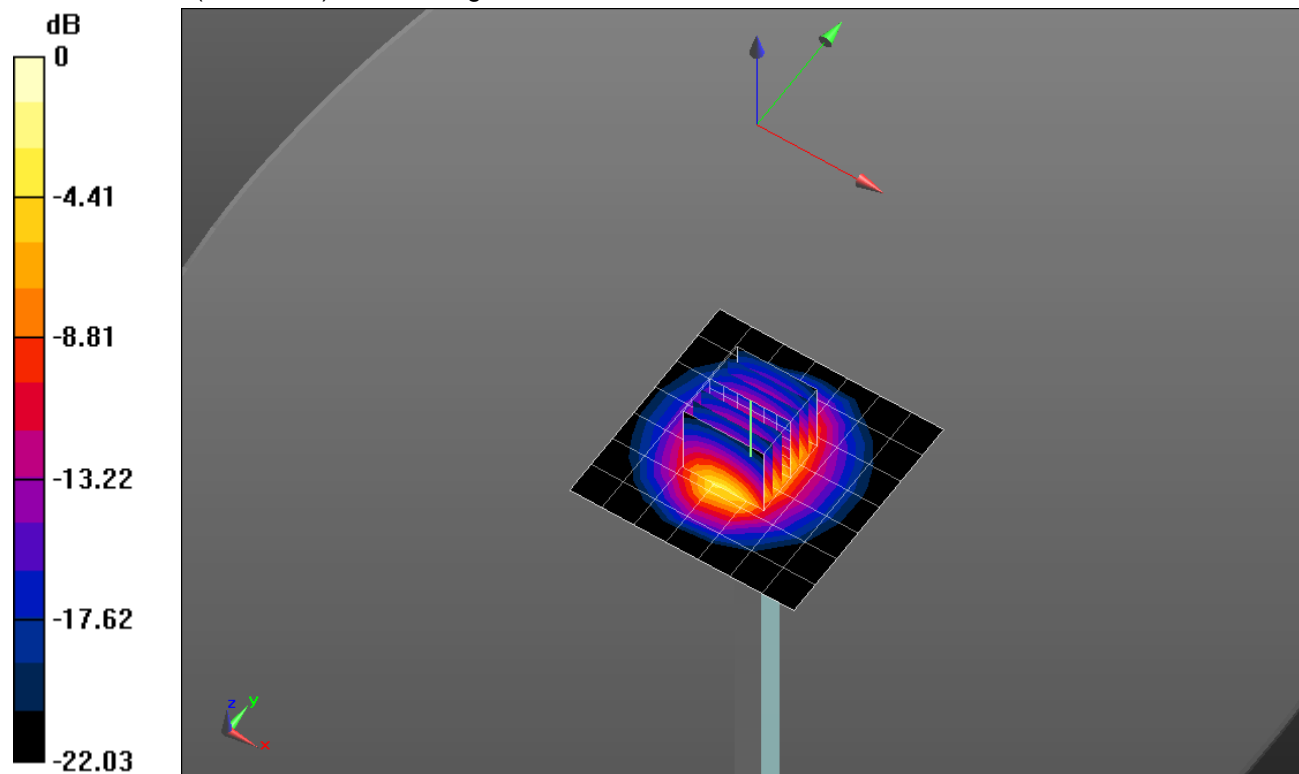
Body/Pin=100 mW/Zoom Scan (7x7x7)/Cube 0: Measurement grid: dx=5mm, dy=5mm, dz=5mm

Reference Value = 59.961 V/m; Power Drift = 0.05 dB

Peak SAR (extrapolated) = 10.6 W/kg

SAR(1 g) = 5.13 W/kg; SAR(10 g) = 2.37 W/kg

Maximum value of SAR (measured) = 7.33 W/kg

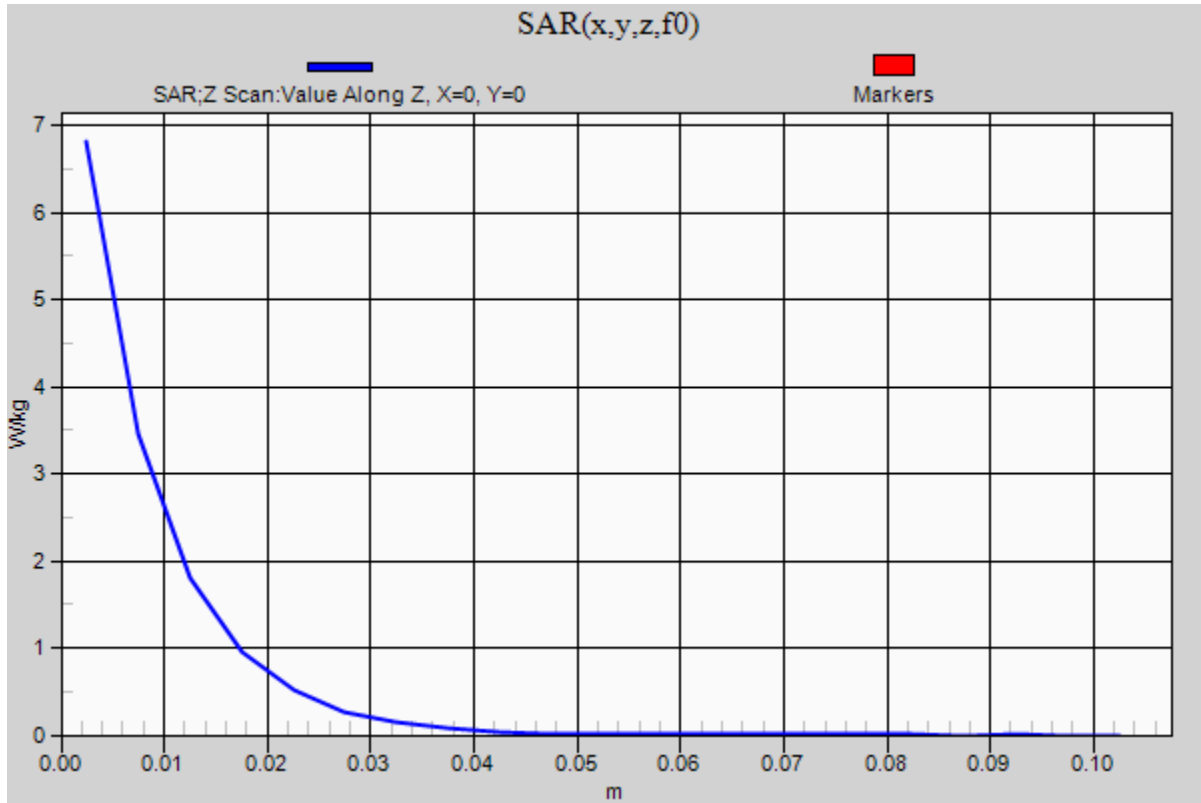


0 dB = 7.33 W/kg = 8.65 dBW/kg

20180321_SystemPerformanceCheck-D2450V2 SN 748

Frequency: 2450 MHz; Duty Cycle: 1:1

Body/Pin=100 mW/Z Scan (1x1x21): Measurement grid: dx=20mm, dy=20mm, dz=5mm
Maximum value of SAR (measured) = 6.81 W/kg



20180322_SystemPerformanceCheck-D5GHzV2 SN 1168

Frequency: 5800 MHz; Duty Cycle: 1:1; Room Ambient Temperature: 24.0°C; Liquid Temperature: 23.0°C

Medium parameters used: $f = 5800$ MHz; $\sigma = 5.898$ S/m; $\epsilon_r = 46.973$; $\rho = 1000$ kg/m³

DASY5 Configuration:

- Area Scan Setting: Find Secondary Maximum Within: 2.0 dB and with a peak SAR value greater than 0.0012W/kg
- Electronics: DAE4 Sn1239; Calibrated: 7/27/2017
- Probe: EX3DV4 - SN3902; ConvF(4.49, 4.49, 4.49); Calibrated: 5/30/2017;
- Sensor-Surface: 1.4mm (Mechanical Surface Detection)
- Phantom: ELI A v5.0; Type: QD OVA 002 AA; Serial: 1194

Body/5.8 GHz, Pin=100mW/Area Scan (7x7x1): Measurement grid: dx=10mm, dy=10mm

Maximum value of SAR (measured) = 17.7 W/kg

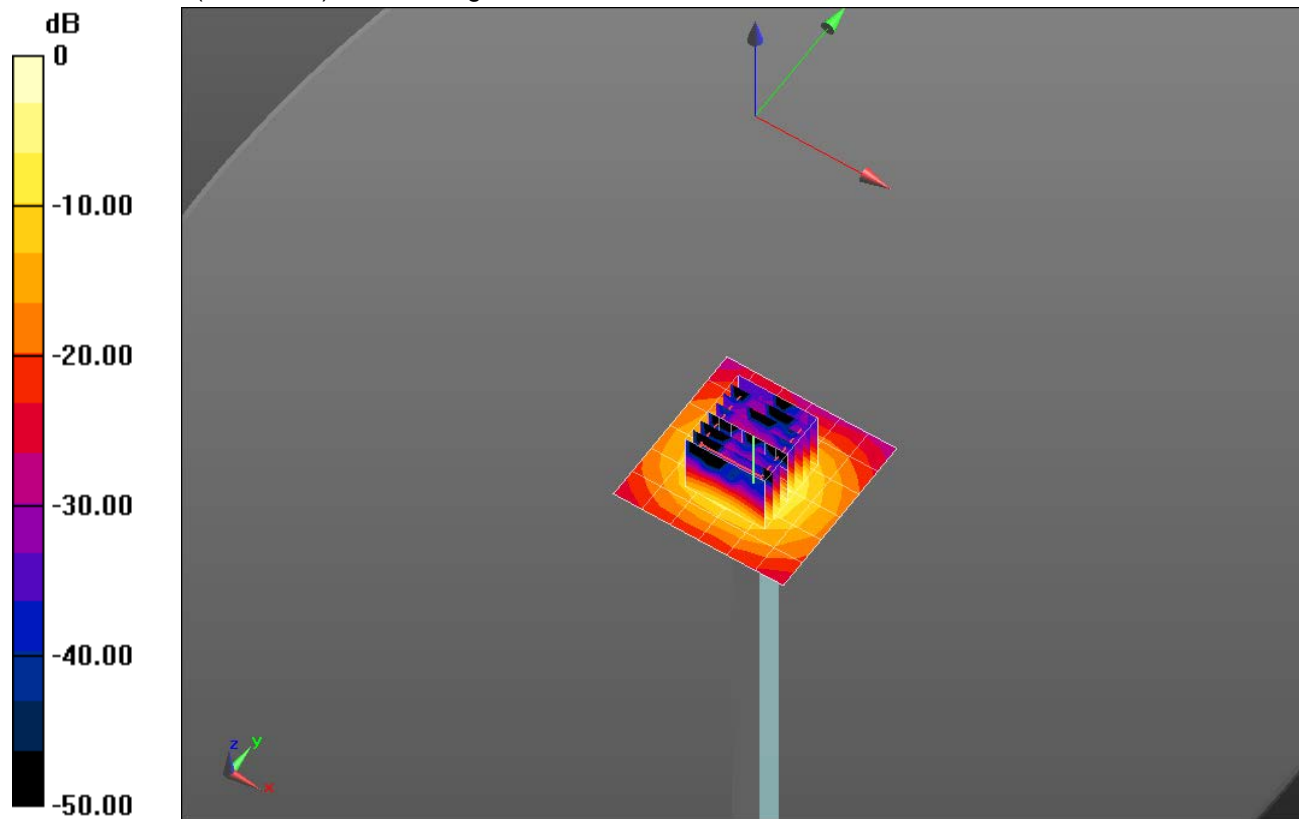
Body/5.8 GHz, Pin=100mW/Zoom Scan (8x8x7)/Cube 0: Measurement grid: dx=4mm, dy=4mm, dz=1.4mm

Reference Value = 47.274 V/m; Power Drift = 0.03 dB

Peak SAR (extrapolated) = 33.5 W/kg

SAR(1 g) = 6.97 W/kg; SAR(10 g) = 1.96 W/kg

Maximum value of SAR (measured) = 17.2 W/kg

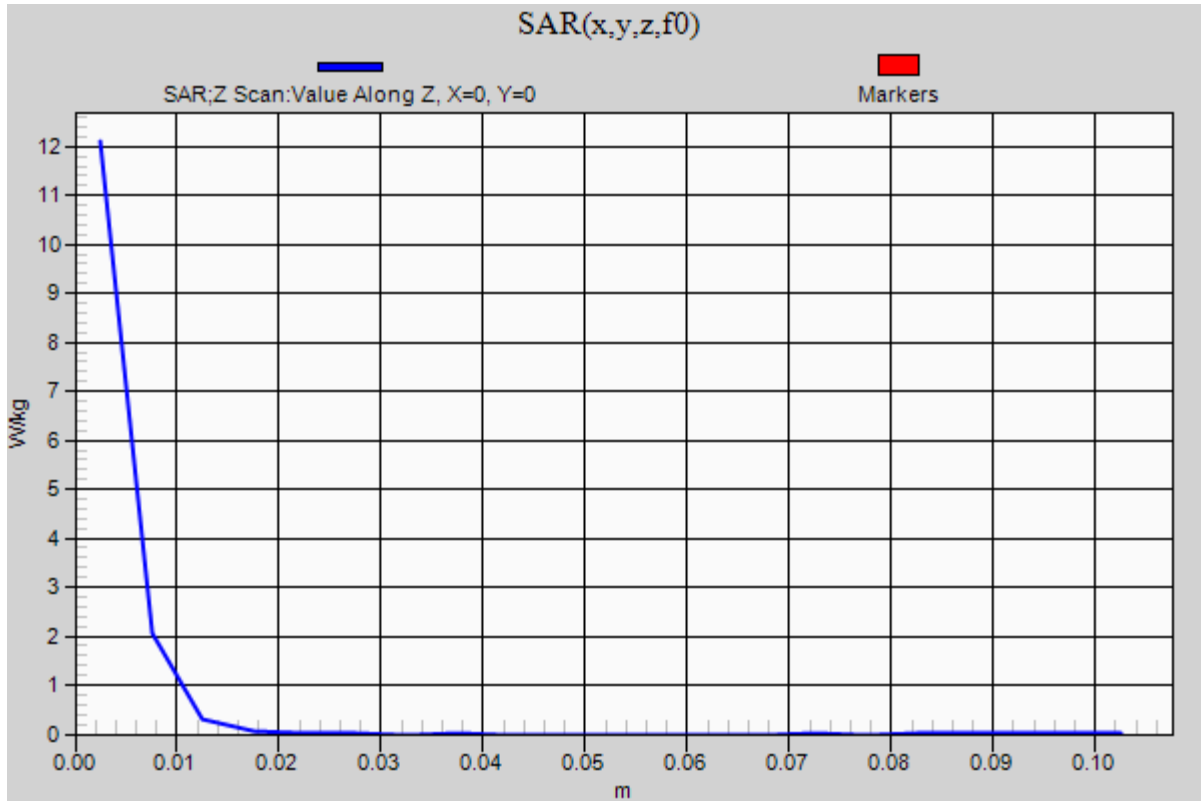


0 dB = 17.2 W/kg = 12.36 dBW/kg

20180322_SystemPerformanceCheck-D5GHzV2 SN 1168

Frequency: 5800 MHz; Duty Cycle: 1:1

Body/5.8 GHz, Pin=100mW/Z Scan (1x1x21): Measurement grid: dx=20mm, dy=20mm, dz=5mm
Maximum value of SAR (measured) = 12.1 W/kg



20180212_SystemPerformanceCheck-D2450V2 SN 706

Frequency: 2450 MHz; Duty Cycle: 1:1; Room Ambient Temperature: 24.0°C; Liquid Temperature: 23.0°C

Medium parameters used: $f = 2450$ MHz; $\sigma = 1.998$ S/m; $\epsilon_r = 51.548$; $\rho = 1000$ kg/m³

DASY5 Configuration:

- Area Scan Setting: Find Secondary Maximum Within: 2.0 dB and with a peak SAR value greater than 0.0012W/kg
- Electronics: DAE4 Sn1433; Calibrated: 3/8/2017
- Probe: EX3DV4 - SN3885; ConvF(7.46, 7.46, 7.46); Calibrated: 10/24/2017;
- Sensor-Surface: 2.5mm (Mechanical Surface Detection), Sensor-Surface: 1.4mm (Mechanical Surface Detection)
- Phantom: ELI A v5.0 Vertical; Type: QDOVA002AA; Serial: S/n:1198

Body/Pin=100 mW/Area Scan (8x8x1): Measurement grid: dx=12mm, dy=12mm

Maximum value of SAR (measured) = 6.43 W/kg

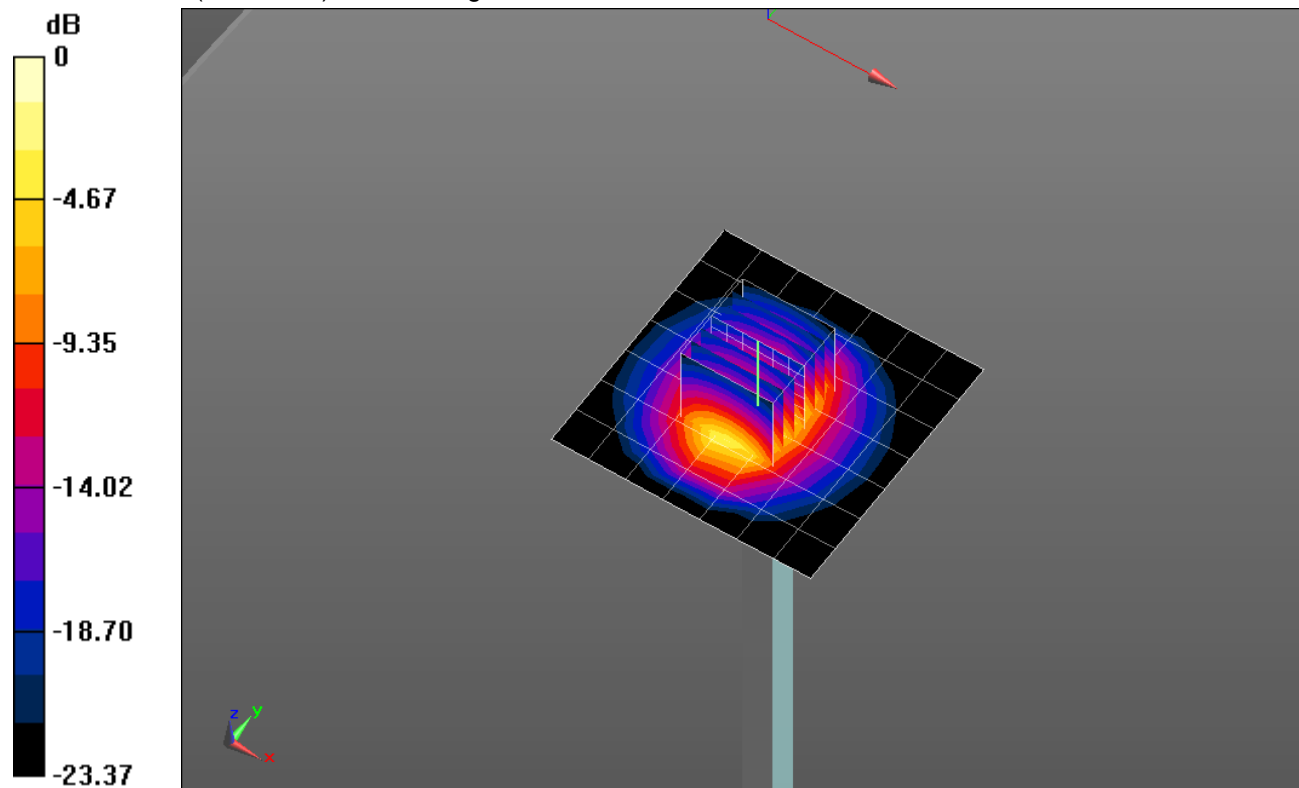
Body/Pin=100 mW/Zoom Scan (7x7x7)/Cube 0: Measurement grid: dx=5mm, dy=5mm, dz=5mm

Reference Value = 60.590 V/m; Power Drift = 0.05 dB

Peak SAR (extrapolated) = 11.3 W/kg

SAR(1 g) = 5.26 W/kg; SAR(10 g) = 2.4 W/kg

Maximum value of SAR (measured) = 8.94 W/kg



0 dB = 8.94 W/kg = 9.51 dBW/kg

20180212_SystemPerformanceCheck-D2450V2 SN 706

Frequency: 2450 MHz; Duty Cycle: 1:1

Body/Pin=100 mW/Z Scan (1x1x21): Measurement grid: dx=20mm, dy=20mm, dz=5mm

Maximum value of SAR (measured) = 7.21 W/kg

