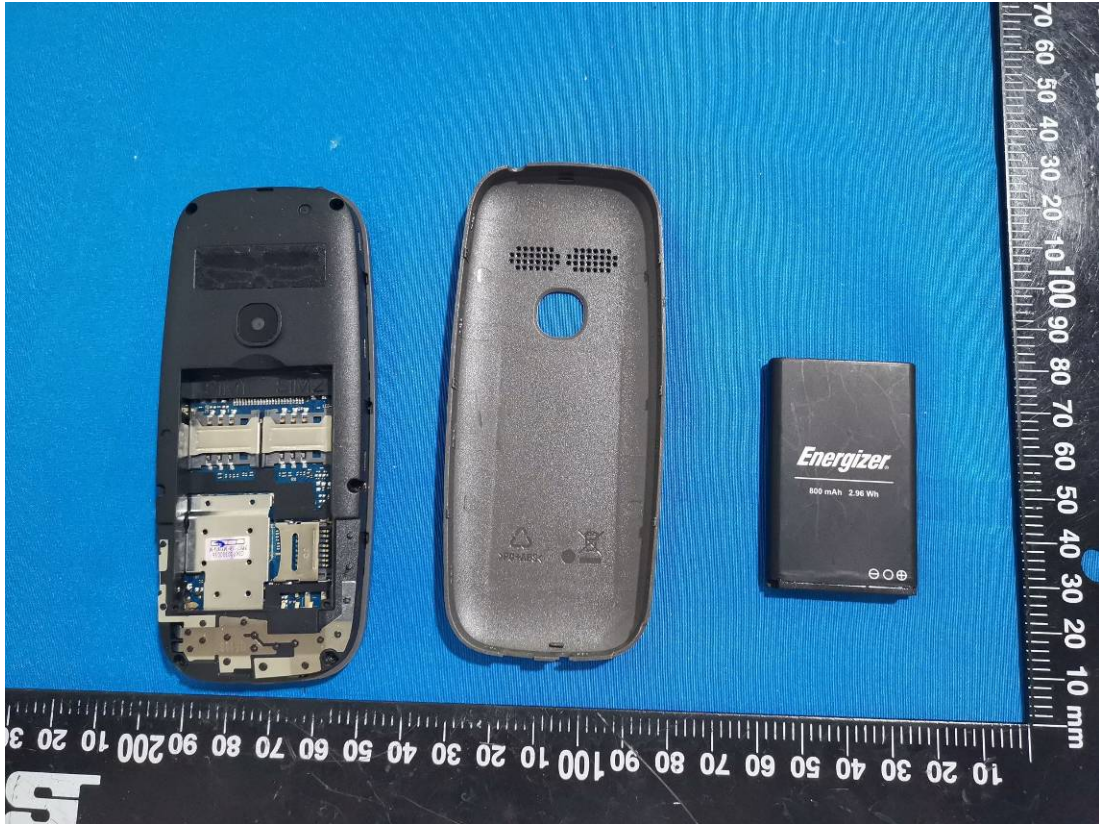
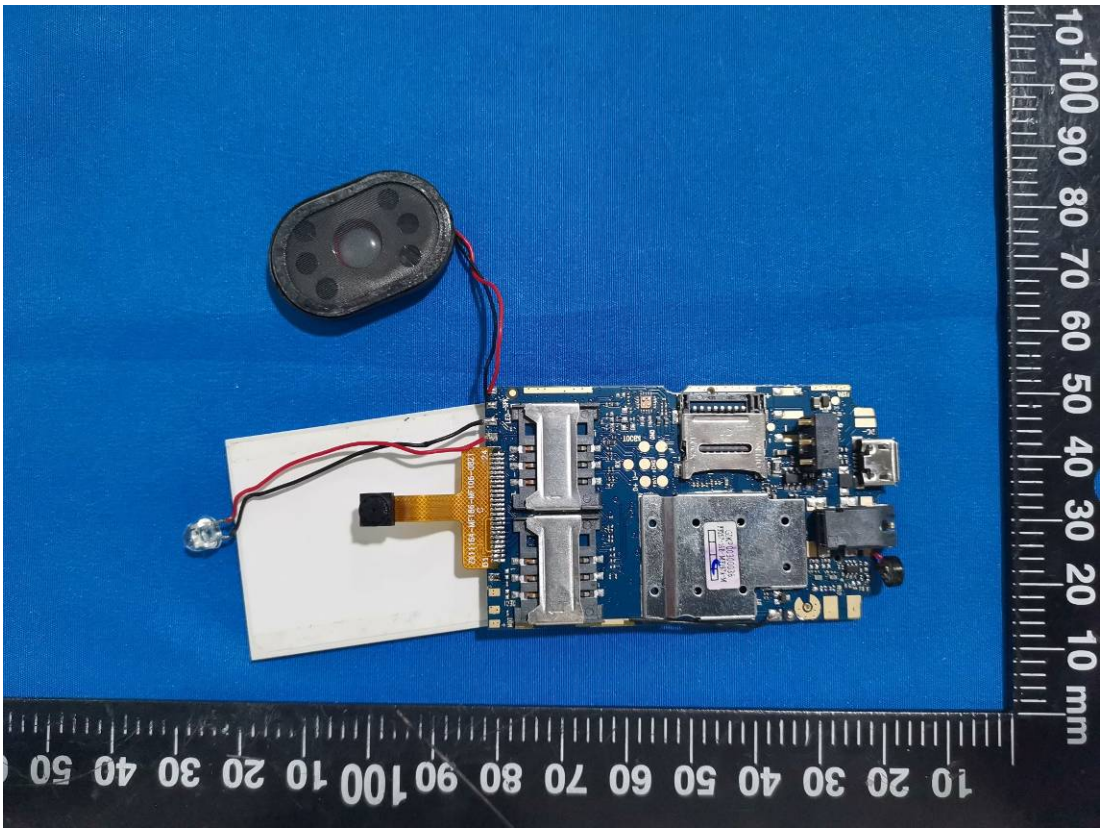
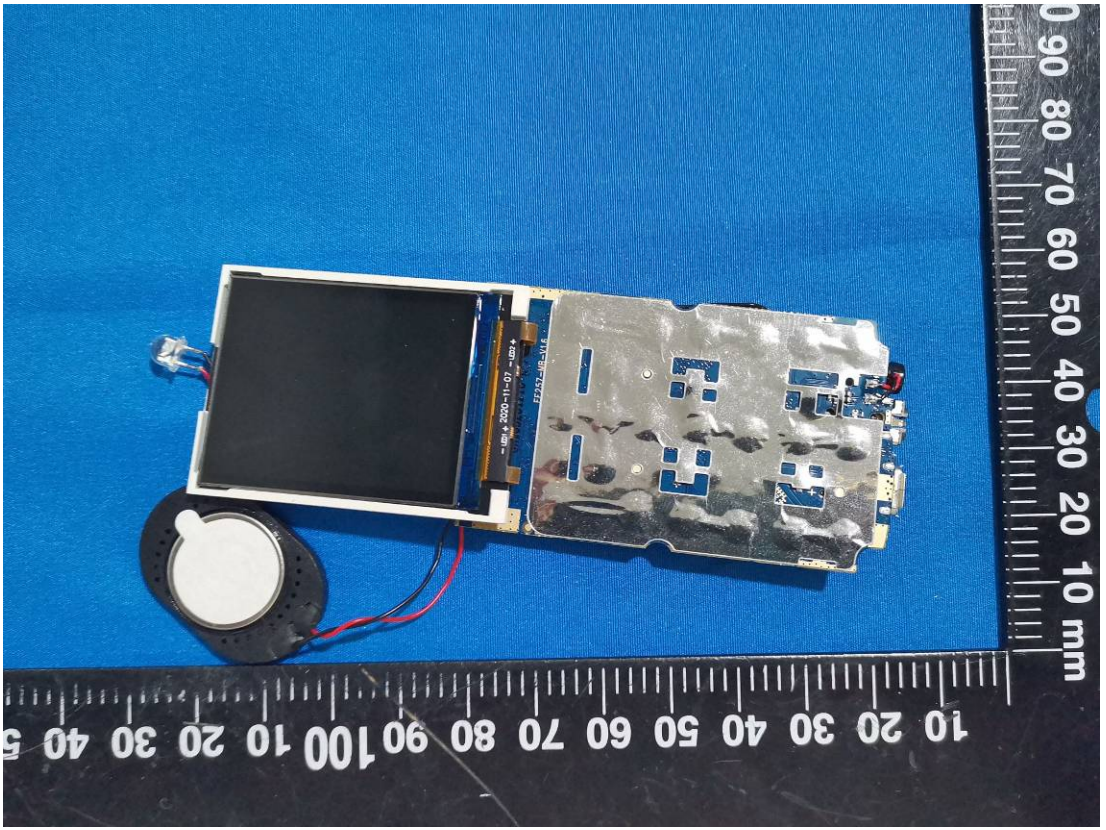
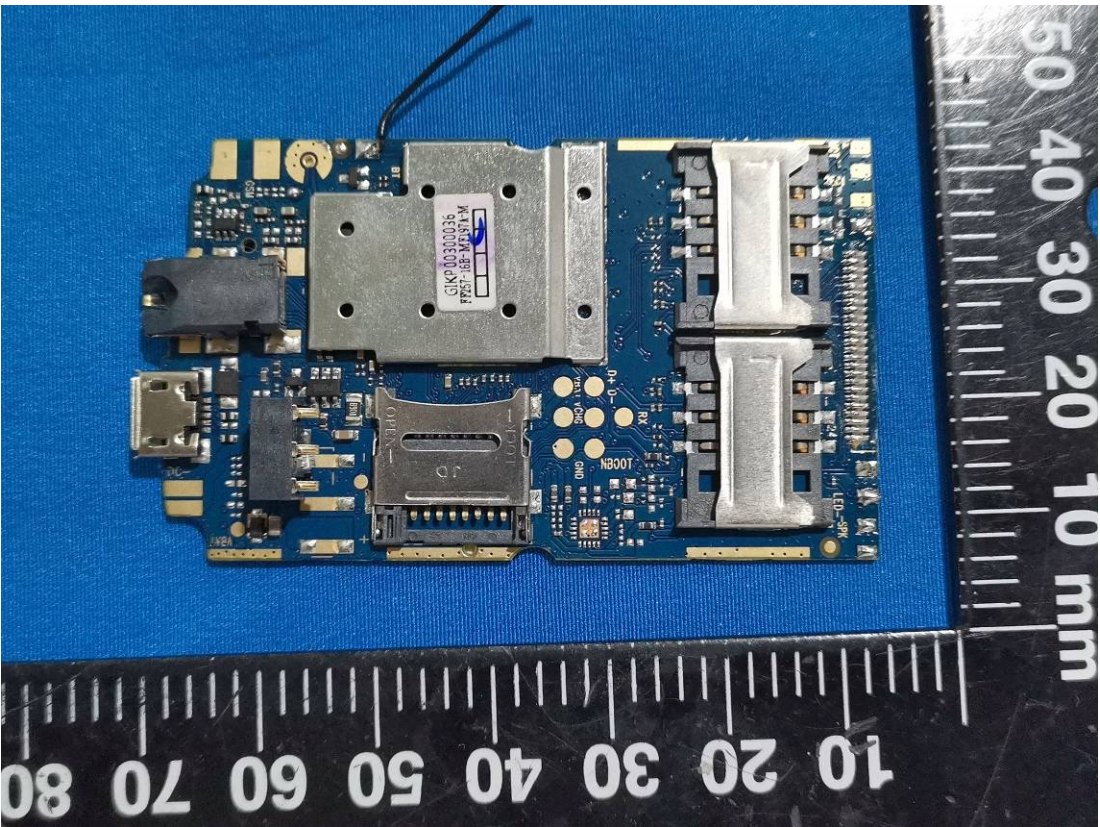
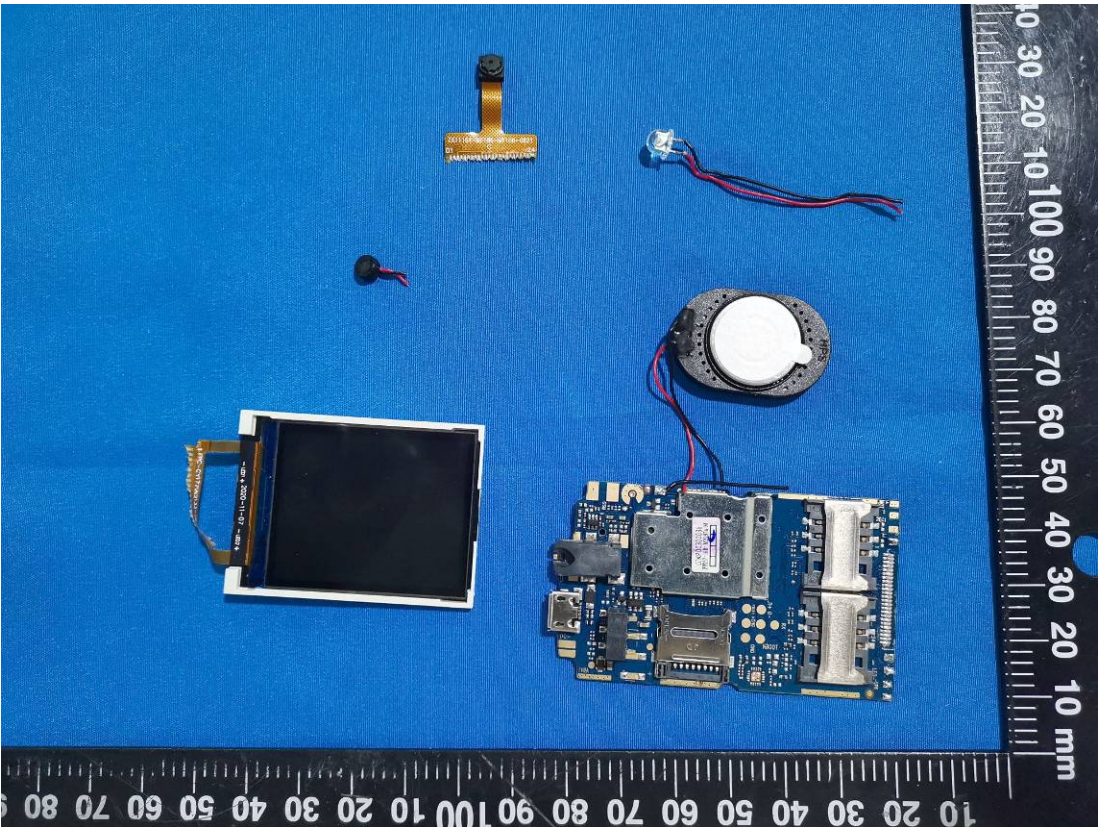
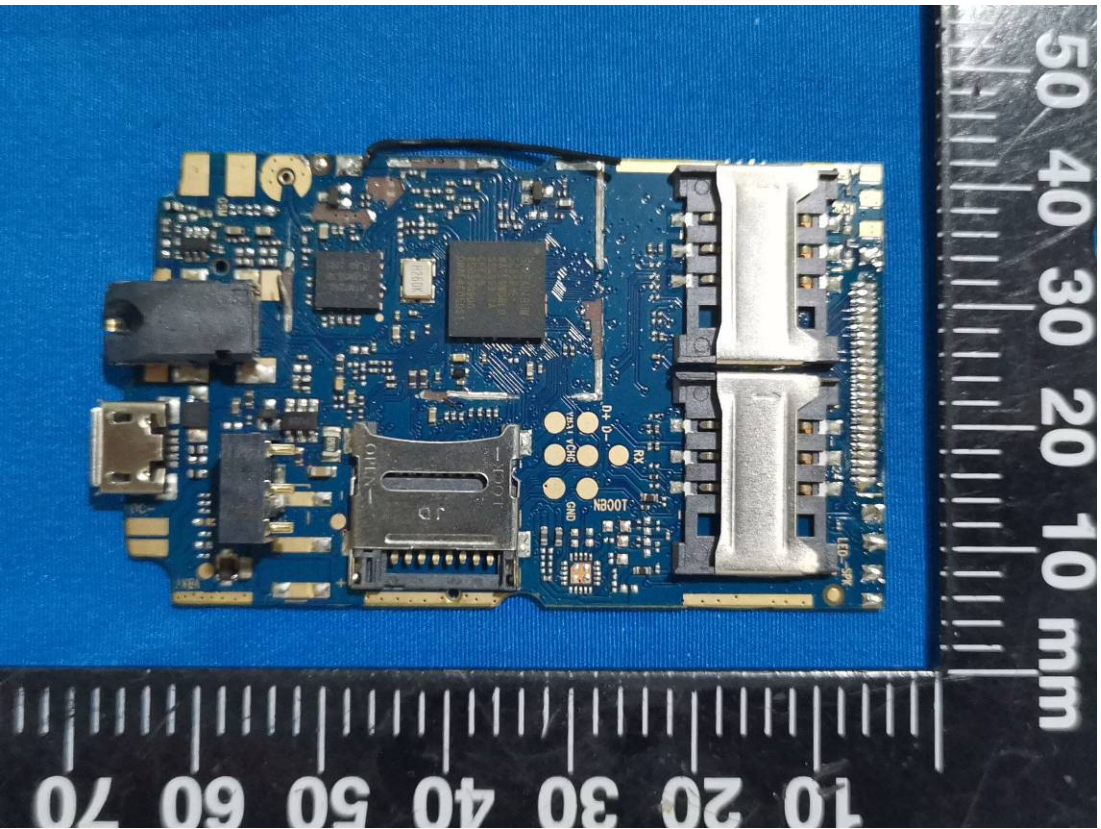
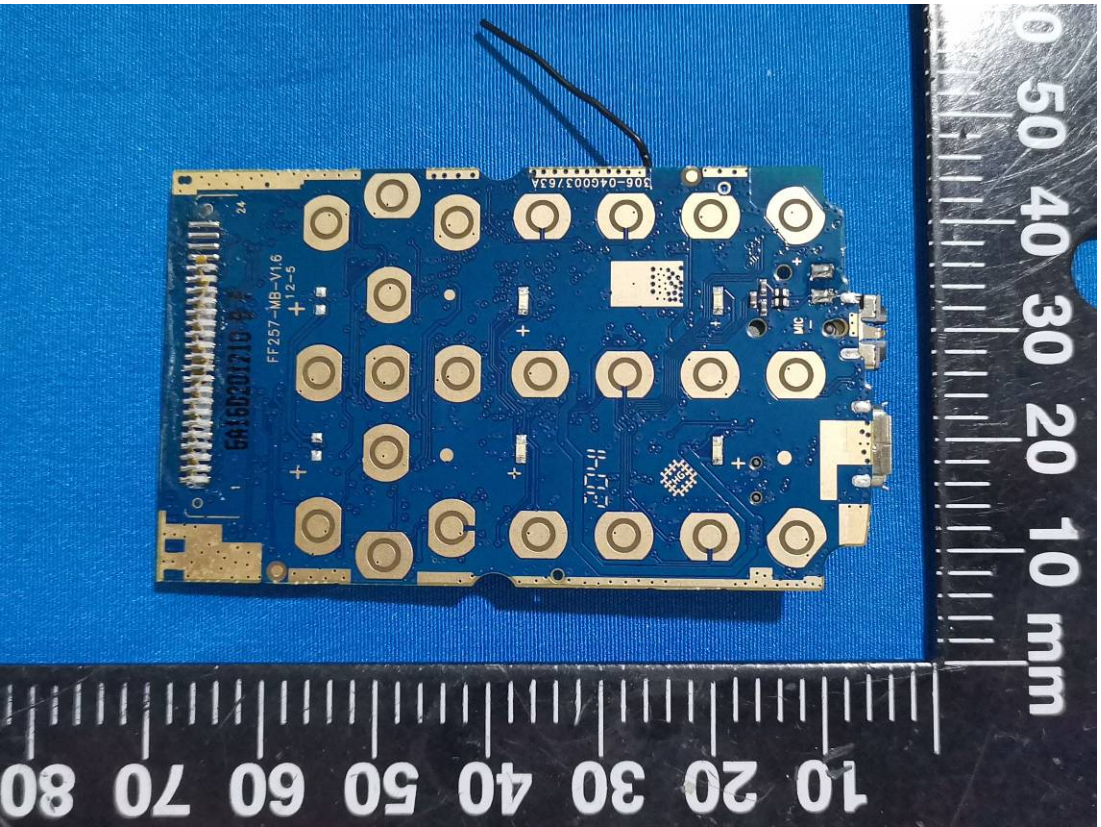


EXHIBIT C - EUT INTERNAL PHOTOGRAPHS

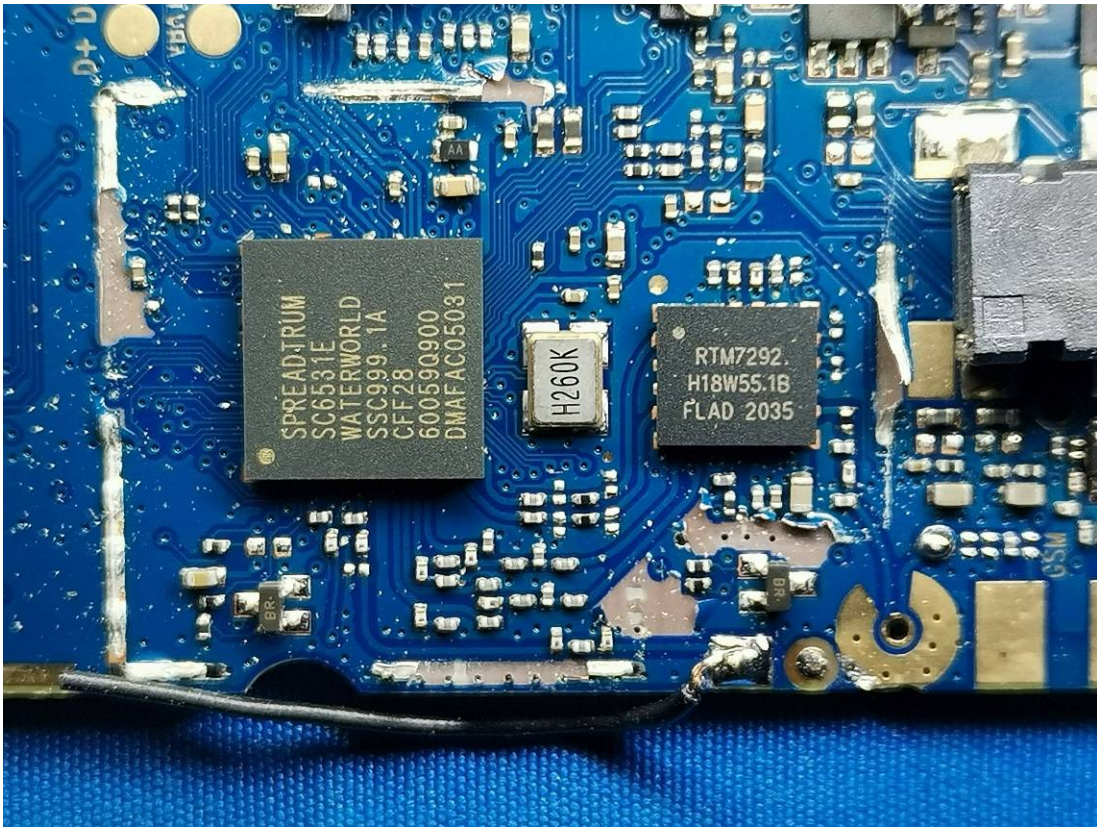




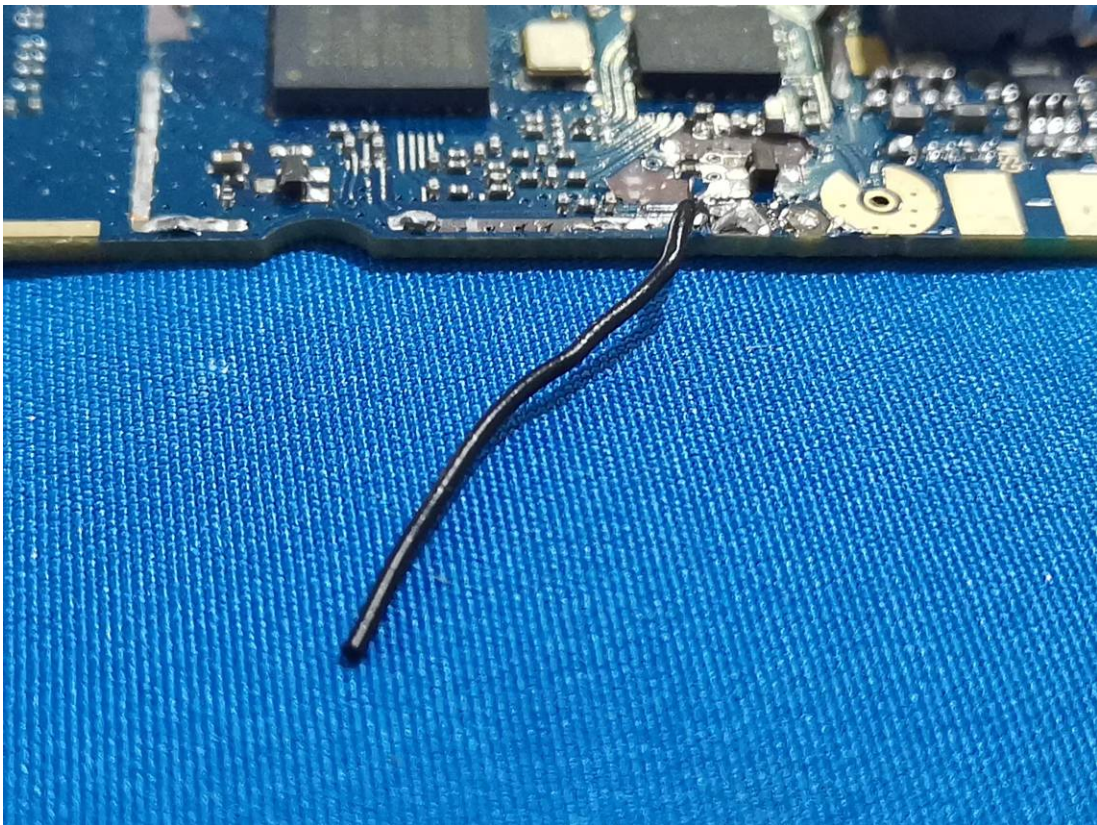




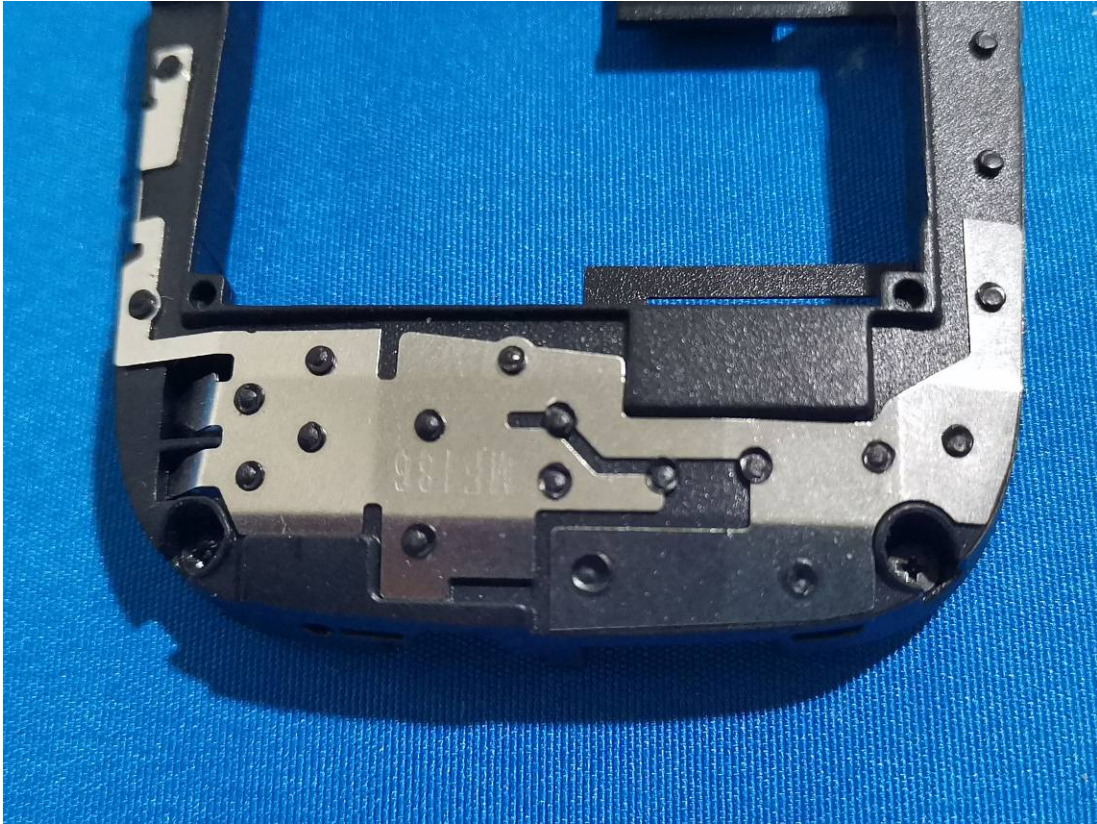
Chip



Bluetooth Antenna



GSM Antenna



Li-Ion RECHARGEABLE BATTERY
BATTERIE Li-Ion RECHARGEABLE

BATTERY MODEL / BATTERIE MODELE : 624450AR-E2
CAPACITY / CAPACITE : 800 mAh 2.96 Wh
NOMINAL VOLTAGE / TENSION NOMINALE : 3.7 VDC
CHARGING VOLTAGE LIMIT / TENSION DE CHARGE
LIMITES : 4.2 VDC ICP-6734/50
STANDARD : GB 31241-2014

ATTENTION!

USE SPECIFIED CHARGER ONLY
DO NOT SHORT-CIRCUIT
DO NOT DISASSEMBLE
DISPOSE OF PROPERLY
MAY EXPLODE IF DAMAGED OR DISPOSED OF IN FIRE

ATTENTION!

UTILISER UNIQUEMENT LE CHARGEUR D'ORIGINE
NE PAS COURT-CIRCUITER
NE PAS DEMONTER
DOIT ETRE RECYCLE, NE PAS JETER
PEUT EXPLOSER SI ENDOMMAGEE OU JETEE DANS LE FEU

REFER TO MANUAL BEFORE USING THE BATTERY
REFERER-VOUS AU MANUEL D'EMPLOI AVANT UTILISATION



Made in China Fabrique en Chine

