

**EXHIBIT C - EUT INTERNAL PHOTOGRAPHS**

---

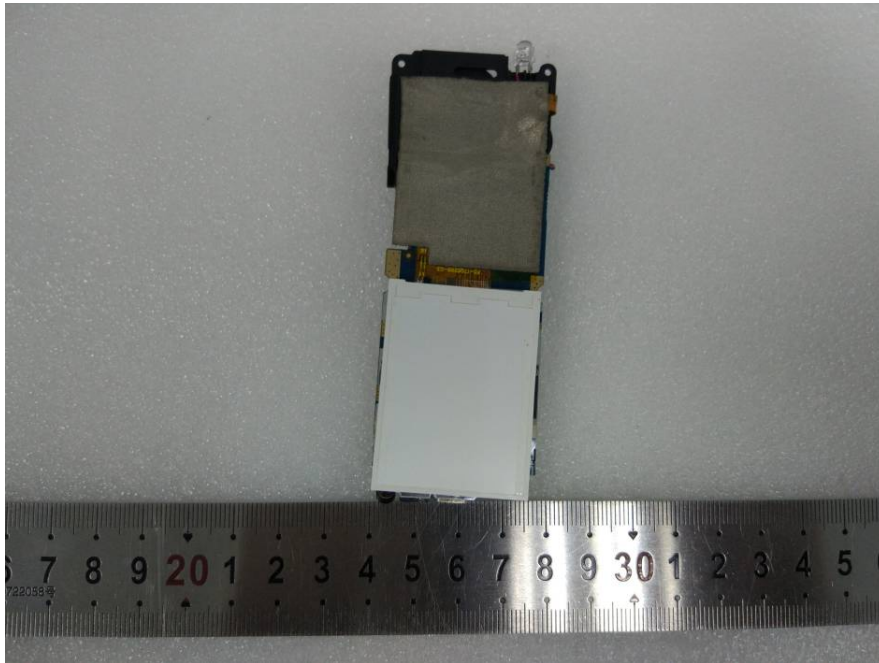
**EUT – Cover off View 1**



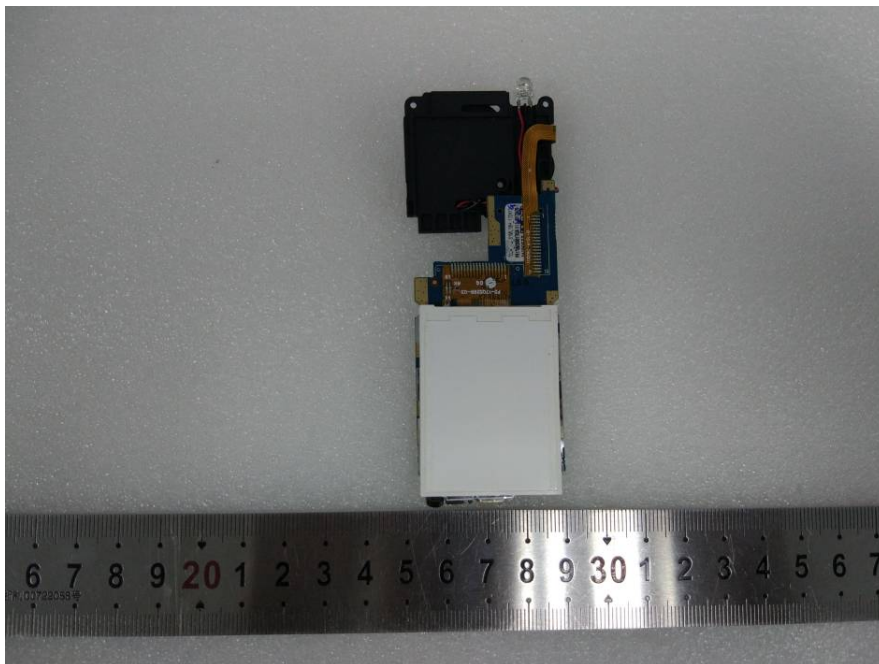
**EUT – Cover off View 2**



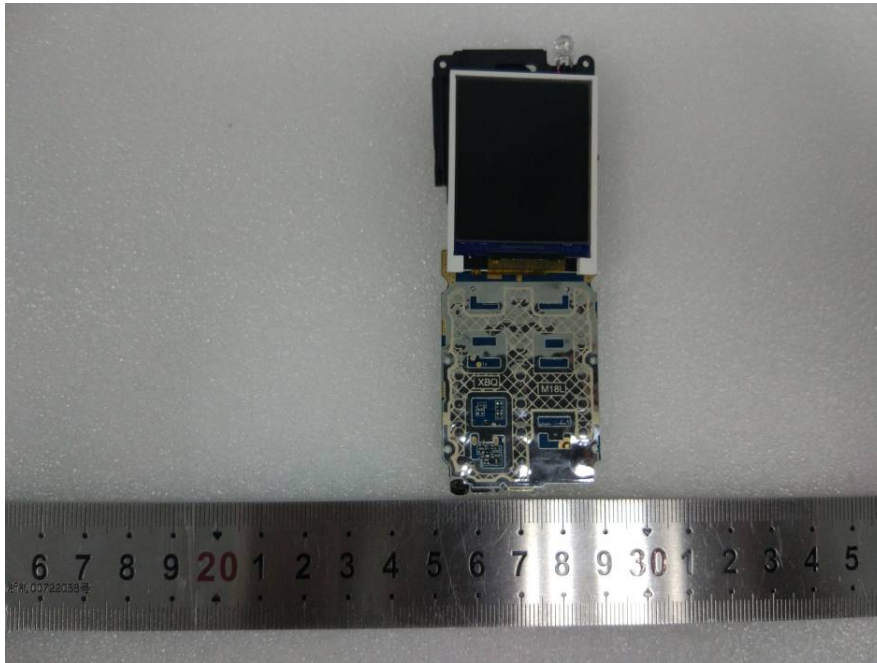
**EUT – Mainboard Top 1 View**



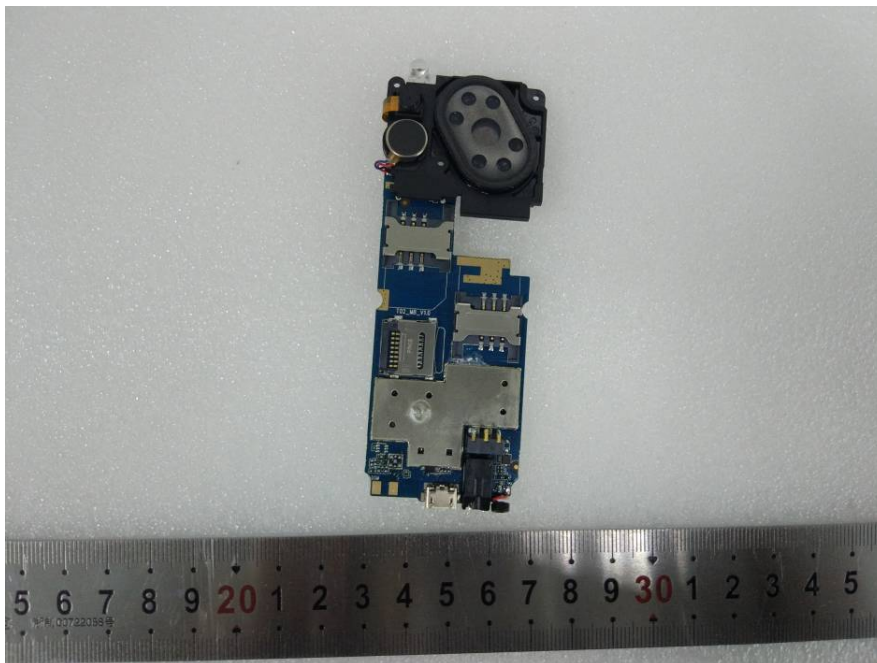
**EUT – Mainboard Top 1 Shielding off View**



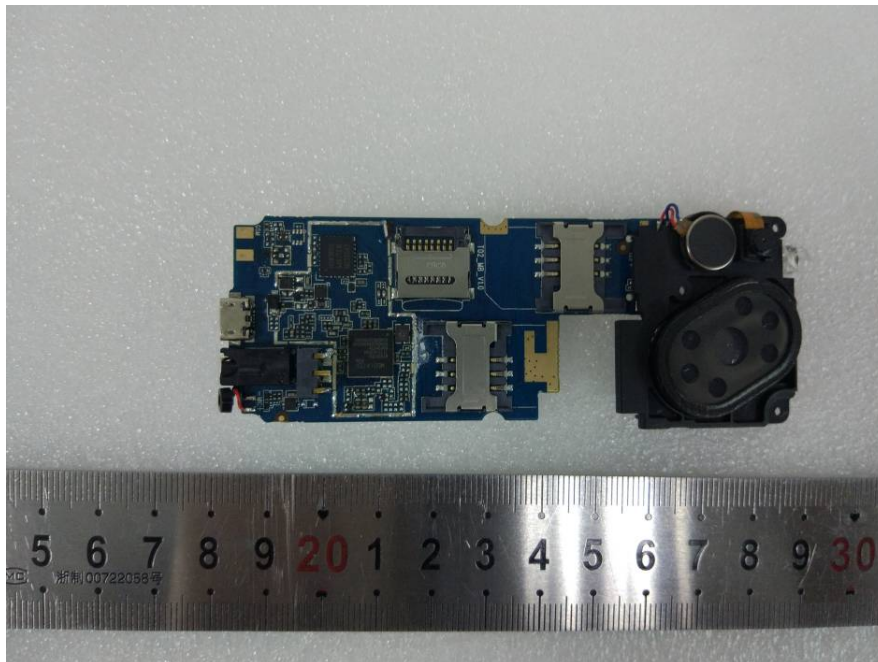
**EUT – Mainboard Top 2 View**



**EUT – Mainboard Bottom View**



**EUT – Mainboard Bottom Shielding off View**



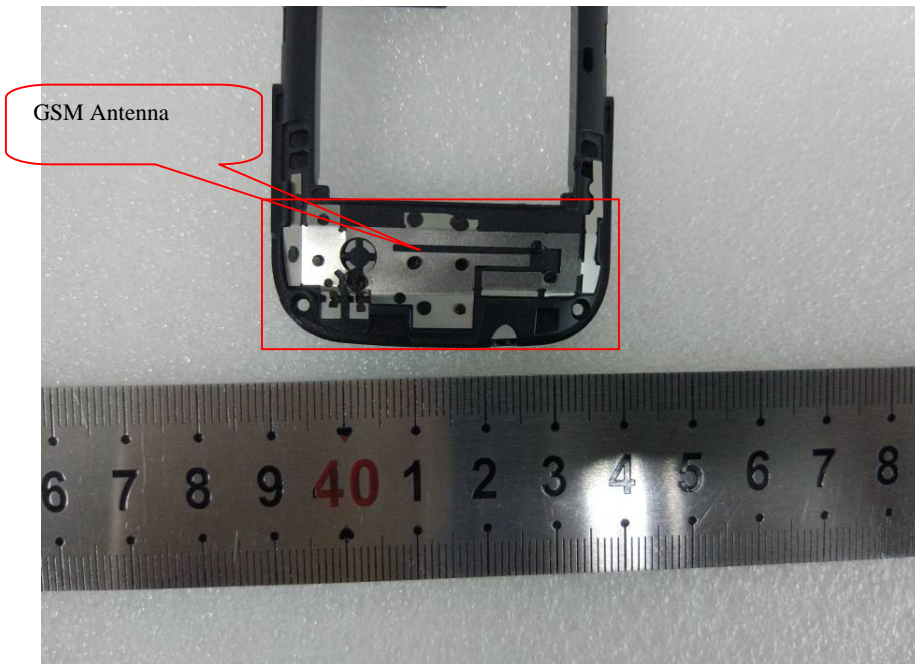
**EUT – IC Chip 1 View**



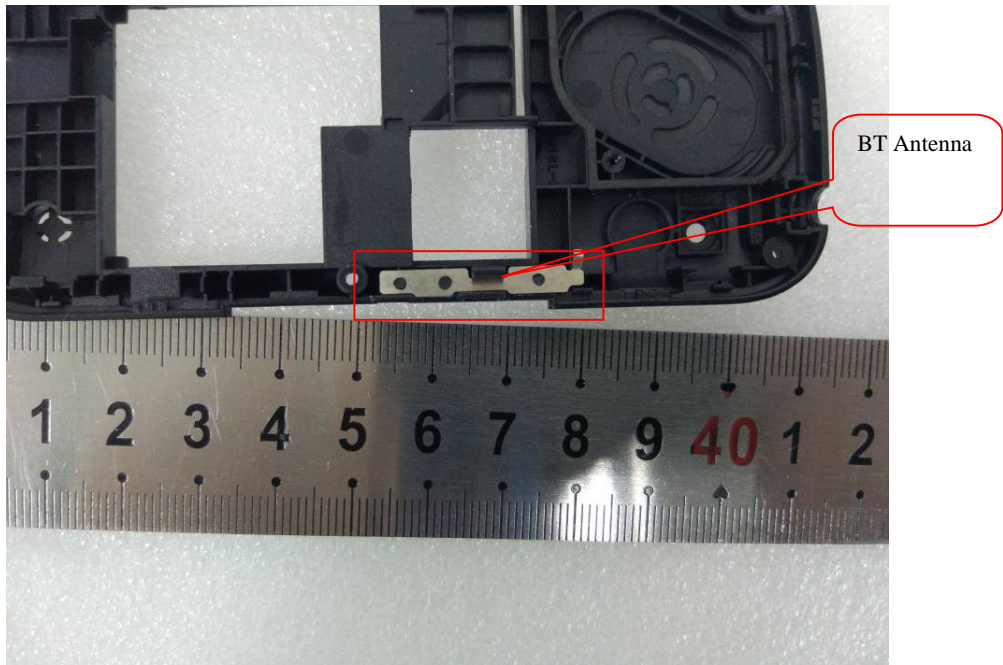
**EUT – IC Chip 2 View**



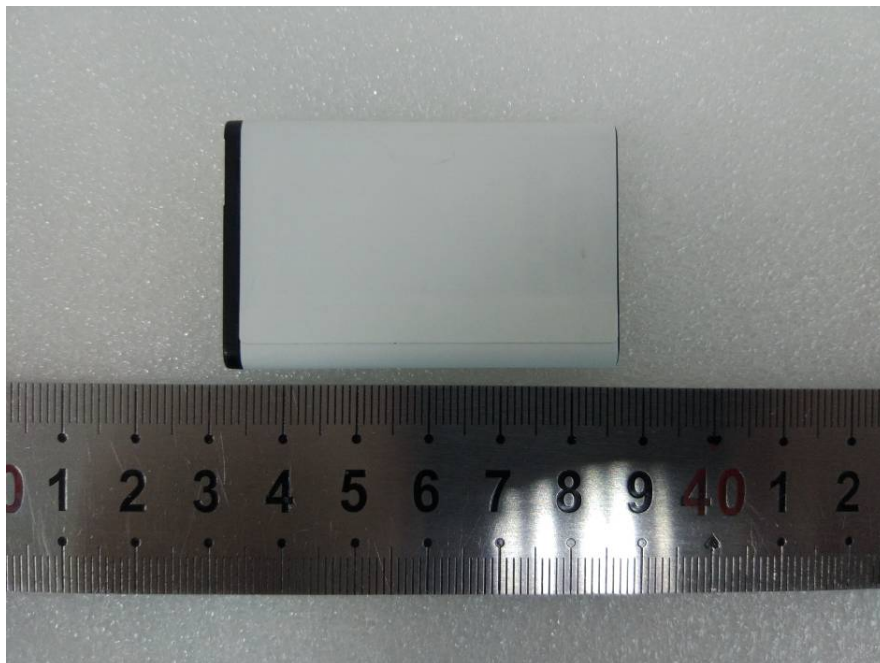
**EUT –GSM Antenna View**



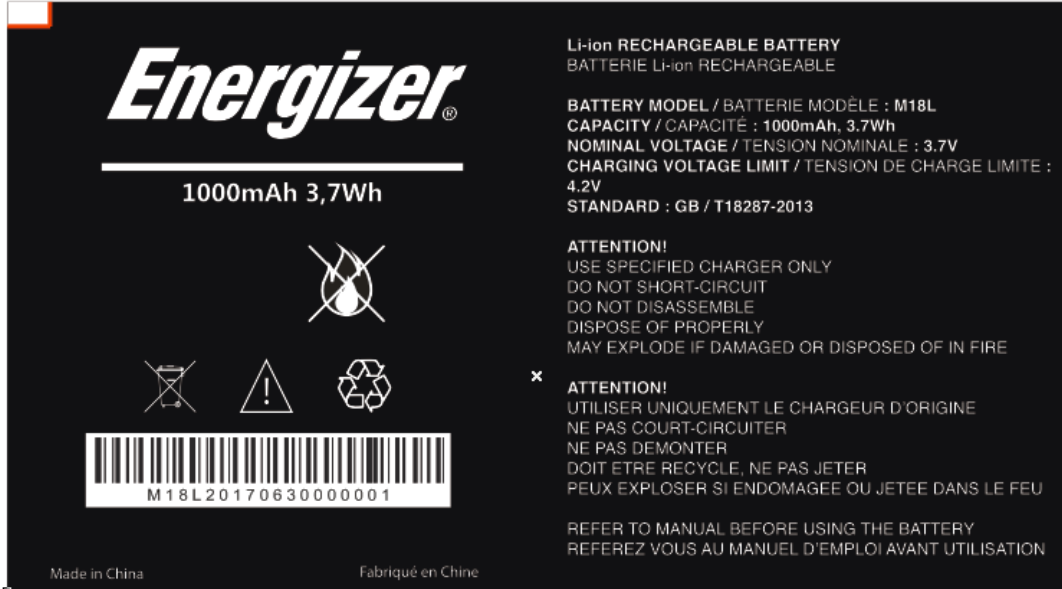
**EUT –BT Antenna View**



**EUT – Battery View**



## EUT – Battery Label View



**Energizer**<sup>®</sup>

**1000mAh 3,7Wh**

Li-ion RECHARGEABLE BATTERY  
BATTERIE Li-ion RECHARGEABLE

BATTERY MODEL / BATTERIE MODÈLE : M18L  
CAPACITY / CAPACITÉ : 1000mAh, 3.7Wh  
NOMINAL VOLTAGE / TENSION NOMINALE : 3.7V  
CHARGING VOLTAGE LIMIT / TENSION DE CHARGE LIMITE : 4.2V  
STANDARD : GB / T18287-2013

**ATTENTION!**  
USE SPECIFIED CHARGER ONLY  
DO NOT SHORT-CIRCUIT  
DO NOT DISASSEMBLE  
DISPOSE OF PROPERLY  
MAY EXPLODE IF DAMAGED OR DISPOSED OF IN FIRE

**ATTENTION!**  
UTILISER UNIQUEMENT LE CHARGEUR D'ORIGINE  
NE PAS COURT-CIRCUITER  
NE PAS DEMONTER  
DOIT ETRE RECYCLE, NE PAS JETER  
PEUX EXPLOSER SI ENDOMAGEE OU JETEE DANS LE FEU

REFER TO MANUAL BEFORE USING THE BATTERY  
REFEREZ VOUS AU MANUEL D'EMPLOI AVANT UTILISATION

Made in China      Fabriqué en Chine

Icons: No fire, No open flame, No disassembly, No short circuit, Recycle, Warning, No disposal in fire.

Barcode: M18L2017063000001