

To access the noodoe system

- Step 1** See "Download noodoe APP" to download the APP. The noodoe system will get installed automatically after successful download.
- Step 2** See the "Handlebar Control button overview" to learn about button operation.
- Step 3** Pair with your scooter, please refer to "Pair with your scooter" and "Upload and create noodoe function".

noodoe Function

- A** See "APP function overview/creation mode" for APP function overview.
- B** See "Find scooter" to locate your scooter.
- C** See "Message alert" to learn about message notice function.
- D** See "Welcome flash" for welcome message function.

To access the noodoe system

Step 1

See "Download noodoe APP" to download the APP. The noodoe system will get installed automatically after successful download.

Download the noodoe APP: The user may enter the Google Play Shop (Android) or App Store (iOS) and search with the keyword "noodoe".

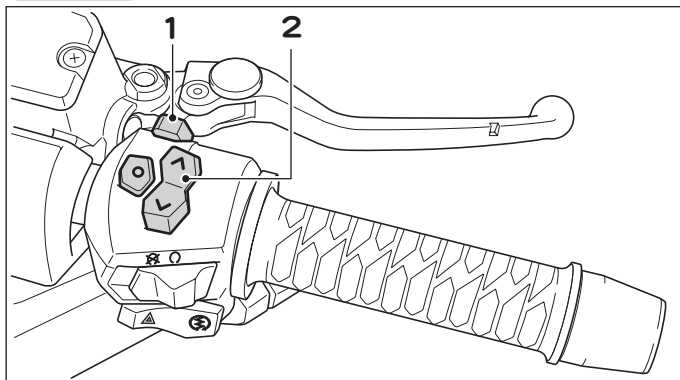


⦿ Attention

- ◆ **Minimum supported version: Android 4.4.4. or above, iOS 9 or above.**
- ◆ **Your smartphone is required to have Google service support to operate the APP successfully.**

Step 2

Handlebar Control button overview



1: Dashboard and noodoe Change-over Switch

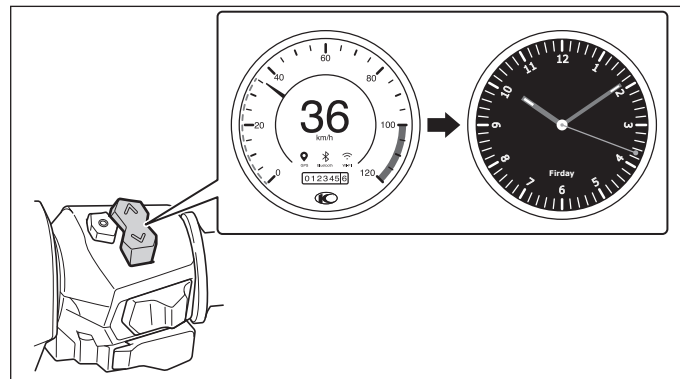
2: Dashboard and noodoe Operation Switch

	m	m → For operating the Dashboard functions on both sides of Dashboard.
	n	n → For operating noodoe function of the Dashboard.
		(^) Button → Up Button
		(∨) Button → Down Button
		(O) Button → Enter Button

While Driving:



- Operate (^) and (∨) buttons to switch-over between 4 screens of Dashboard noodoe functions.
- Press (O) button to end the action.



When Stopped:

Message Notice:

- Operate (^) and (∨) buttons to switch-over message notices in the Dashboard noodoe Function.
- Press (O) button to activate or close message notices.

Step 3

Scooter Pairing

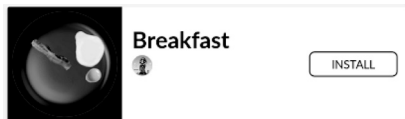
Ignition on(Scooter) → set the switch to n position (Scooter) → Press (O) button for 5s to enter "Pairing Mode" (Scooter) → Select a new user (Scooter) by the Operation Button → Select Bluetooth Device (cell phone) → Link (cell phone) → Confirm Code (cell phone and Scooter) → Press (O) button → Pairing accomplished.



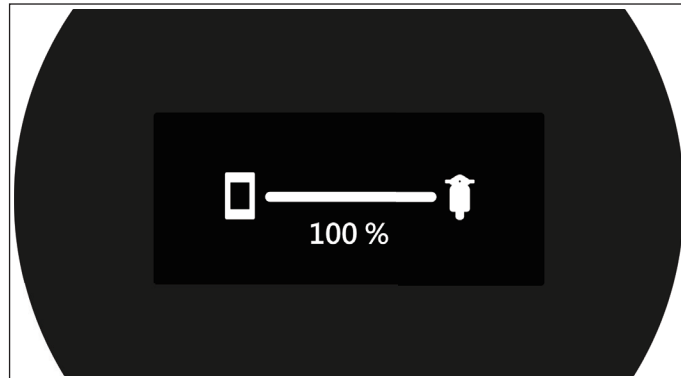
Upload Creation

User created Dashboard can be installed onto scooter.

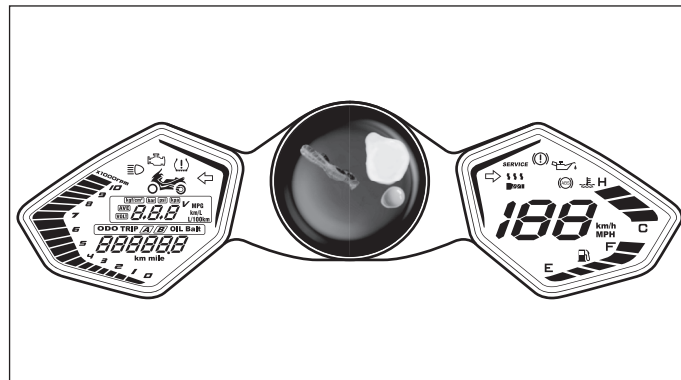
- Cell phone display



Upload creation to Scooter.



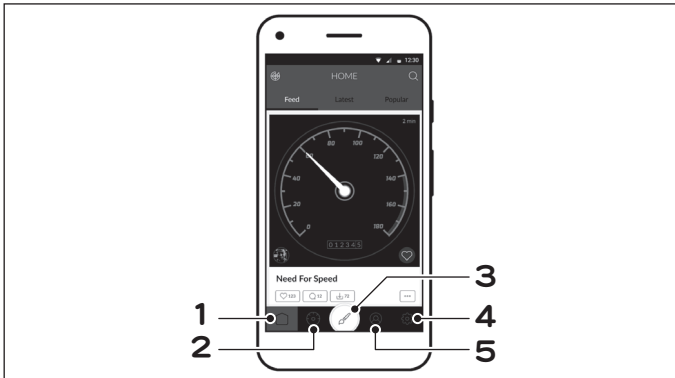
- Dashboard Display



noodoe Function

A App Functions

- The user may browse and collect creations from users all over the world and install them into the Dashboard of your vehicle.
- The user may collect or remix any creation you find, or design his/her own dashboard in Create Mode.



1: Home/Feed
3: Create Mode
5: Settings

2: My Dashboards
4: My Profile


Create Mode

- Create Mode allows you to remix an existing template to your liking.
- Pick between Clock, Weather, Compass or Speed and unleash your creativity. You can change colors, fonts, upload your own images and more possibilities.



Control Functions of Mechanism

B Find My Scooter

- Forgot where you've parked? No worries, noodoe remembers.
- Tap the  icon and the app will guide you back to where you last parked.



Both **Bluetooth/GPS/Internet** functions shall be activated in your cell phone.

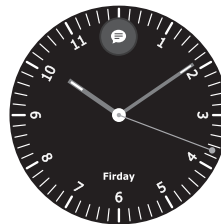
There are 2 modes of "Find my Scooter" display

1. Map Mode
2. Azimuth Mode

C Message Notice

Once the cell phone is linked, any incoming message will be forwarded to the scooter dashboard (Android users may select display with → Setting → Application procedure in the selection).

- While Driving:



A message "For the sake of safety, no message is viewable when you drive the scooter." is displayed on the top of Dashboard noodoe.

- When Stopped:

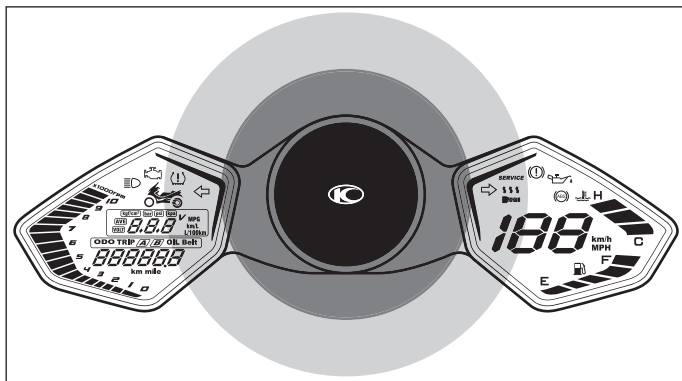


Any message received during your ride will be displayed automatically when you make a subsequent stop.

You may also press the **Up and Down** button on the right handlebar switch (only when you stop the vehicle) to manually **check** message contents.

D Welcome Light:

Every time you approach your scooter, it will greet you with a Welcome Light. This is very useful when you're looking for your scooter in a crowded parking area or in nighttime.



⚠ WARNING

- ◆ When using the noodoe function, make sure that the batteries of both the cell phone and vehicle are fully charged. If you need to start the engine for charging, do it in a well ventilated place.
- ◆ When Ignition off and the battery voltage gets low, the noodoe system shuts off Bluetooth/connection/welcome light function automatically . In case it fails to work after the engine has started, get the system checked and repaired by your dealer.

👁 Attention

1. For enhancing the accuracy of displayed weather and local information, you should activate GPS and Network functions of your cell phone. (In case of cell phone signal failure, previous information will be displayed until resumption of the cell phone signal for displaying accurate information).
2. Switching over of Speed / Temperature / Time units are carried out from a cell phone; minor difference resulting from the frequency of data updating is within a reasonable range.
3. Scanning speed and results of Bluetooth Device may be limited in compatibility issues due to cell phone specifications.
 - a. Scanning speed of Bluetooth Device is slow.
 - b. Pairing is unsuccessful.
 - c. Bluetooth error occurs during the link.
4. The User needs to set cell phone's Cloud Messaging function to facilitate noodoe message display.
5. While driving, noodoe will not display any message (including incoming call, message, LINE, FB, etc.). While vehicle stops, noodoe automatically displays incoming calls and relevant information.
6. The last screen at the previous shut down will be the first screen on a re-start.
7. Compass function must be activated by performing the setting on a cell phone. The minor errors may exist depending on the upgrade frequency of data.

8. Compass only performs self-verification to modify orientation when the vehicle starts to move, therefore it is normal that no orientation calibration is activated after connecting the noodoe App when the vehicle has not started moving yet.
9. Time of noodoe will be calibrated automatically after connecting noodoe with a cell phone.
10. The user shall never operate noodoe while riding the vehicle or an accident may occur.
11. Action of Welcome Light function can be set using an APP (On or Off).

When Breathing Light is set enabled:

- a. Welcome Light is only activated on a subsequent connection of a Bluetooth Device. Each activation lasts for 2 minutes before switching off automatically.
- b. After each riding, a single cell phone linkage will only activate Welcome Light 3 times; Welcome Light will shut off Bluetooth function automatically after being activate 3 times.
- c. Entering the Find My Scooter screen will include a and b limitations, the noodoe system will activated Welcome Light until the user leaves the Find My Scooter screen or shuts off the Bluetooth connection function.
- d. The welcome light remains in standby mode for 3 days after shutdown. The Bluetooth function turns off 3 days later or when welcome light or battery voltage gets too low (about 12V).
12. When KEYLESS Main Switch is Off, all the information will be removed, for preventing leaking of personal info.
13. APP info display speed may be limited due to network transfer rate, therefore resulting in slow data indication under poor networking speed.
14. There are certain APP notice limitations between iOS and Android system.
15. There are possibilities that APP functions may become unusable after upgrading iOS and Android software; some new cell phone models may have unusable issues.
16. The noodoe system may shut off and enter into protection mode due to excessive temperature rise under certain special environments or mode; however the system will resume operation when the temperature drops.

Important FCC notice:

In accordance with FCC Part 15C, this module is listed as a Modular Transmitter device. The antenna of this transmitter must not be co-located or operating in conjunction with any other antenna or transmitters within a host device, except in accordance with FCC multitransmitter product approval procedures.

FCC Label Instructions

The outside of final products that contains this module device must display a label referring to the enclosed module. This exterior label can use wording such as the following: Contains Transmitter Module FCC ID: 2AM4E37130-LGC6 or "Contains FCC ID: 2AM4E37130-LGC6 Any similar wording that expresses the same meaning may be used.

FCC Statement:

This device complies with part 15 of the FCC Rules. Operation is subject to the following two conditions: (1) This device may not cause harmful interference, and (2) this device must accept any interference received, including interference that may cause undesired operation. NOTE: This equipment has been tested and found to comply with the limits for a Class B digital device, pursuant to part 15 of the FCC Rules. These limits are designed to provide reasonable protection against harmful interference in a residential installation. This equipment generates, uses and can radiate radio frequency energy and, if not installed and used in accordance with the instructions, may cause harmful interference to radio communications. However, there is no guarantee that interference will not occur in a particular installation. If this equipment does cause harmful interference to radio or television reception, which can be determined by turning the equipment off and on, the user is encouraged to try to correct the interference by one or more of the following measures: —Reorient or relocate the receiving antenna. — Increase the separation between the equipment and receiver. —Connect the equipment into an outlet on a circuit different from that to which the receiver is connected. — Consult the dealer or an experienced radio/TV technician for help. Changes or modifications not expressly approved by the party responsible for compliance could void the user's authority to operate the equipment.