

TEST REPORT

FCC ID: 2AM44B017B

Product: Hapee Sonic Vibration Toothbrush

Model No.: B017B/02

Additional Model No.: N/A

Trade Mark: N/A

Report No.: TCT170712E007

Issued Date: Aug. 29, 2017

Issued for:

Zhejiang Hapee Oral Health Corp.

No.1412 Zhouan Road, Jiaxing City, Zhejiang Province, China

Issued By:

Shenzhen Tongce Testing Lab.

**1B/F., Building 1, Yibaolai Industrial Park, Qiaotou, Fuyong, Baoan District,
Shenzhen, Guangdong, China**

TEL: +86-755-27673339

FAX: +86-755-27673332

Note: This report shall not be reproduced except in full, without the written approval of Shenzhen Tongce Testing Lab.

This document may be altered or revised by Shenzhen Tongce Testing Lab. personnel only, and shall be noted in the revision section of the document. The test results in the report only apply to the tested sample.

TABLE OF CONTENTS

1. Test Certification.....	3
2. Test Result Summary	4
3. EUT Description	5
4. General Information.....	6
4.1. Test environment and mode.....	6
4.2. Description of Support Units.....	6
5. Facilities and Accreditations	7
5.1. Facilities	7
5.2. Location	7
5.3. Measurement Uncertainty.....	7
6. Test Results and Measurement Data	8
6.1. Antenna requirement	8
6.2. Conducted Emission	9
6.3. Conducted Output Power	13
6.4. Emission Bandwidth.....	16
6.5. Power Spectral Density	19
6.6. Test Specification	19
6.7. Conducted Band Edge and Spurious Emission Measurement.....	22
6.8. Radiated Spurious Emission Measurement	25

Appendix A: Photographs of Test Setup

Appendix B: Photographs of EUT

1. Test Certification

Product:	Hapee Sonic Vibration Toothbrush
Model No.:	B017B/02
Additional Model No.:	N/A
Trade Mark:	N/A
Applicant:	Zhejiang Hapee Oral Health Corp.
Address:	No.1412 Zhouan Road, Jiaxing City, Zhejiang Province, China
Manufacturer:	Zhejiang Hapee Oral Health Corp.
Address:	No.1412 Zhouan Road, Jiaxing City, Zhejiang Province, China
Date of Test:	Jun. 27, 2017 – Jul. 10, 2017
Applicable Standards:	FCC CFR Title 47 Part 15 Subpart C Section 15.247 KDB 558074 D01 DTS Meas Guidance v03r05

The above equipment has been tested by Shenzhen Tongce Testing Lab. and found compliance with the requirements set forth in the technical standards mentioned above. The results of testing in this report apply only to the product/system, which was tested. Other similar equipment will not necessarily produce the same results due to production tolerance and measurement uncertainties.

Tested By:

Jin Wang

Date:

Jul. 10, 2017

Reviewed By:

Joe Zhou

Date:

Aug. 29, 2017

Approved By:

Tomsin

Date:

Aug. 29, 2017

2. Test Result Summary

Requirement	CFR 47 Section	Result
Antenna requirement	§15.203/§15.247 (c)	PASS
AC Power Line Conducted Emission	§15.207	PASS
Conducted Peak Output Power	§15.247 (b)(3) §2.1046	PASS
6dB Emission Bandwidth	§15.247 (a)(2) §2.1049	PASS
Power Spectral Density	§15.247 (e)	PASS
Band Edge	§15.247(d) §2.1051, §2.1057	PASS
Spurious Emission	§15.205/§15.209 §2.1053, §2.1057	PASS

Note:

1. PASS: Test item meets the requirement.
2. Fail: Test item does not meet the requirement.
3. N/A: Test case does not apply to the test object.
4. The test result judgment is decided by the limit of test standard.

3. EUT Description

Product:	Hapee Sonic Vibration Toothbrush
Model No.:	B017B/02
Additional Model No.:	N/A
Trade Mark:	N/A
BT Version:	V4.0
Operation Frequency:	2402MHz~2480MHz
Channel Separation:	2MHz
Number of Channel:	40
Modulation Technology:	GFSK
Antenna Type:	Multilayer Chip Antenna
Antenna Gain:	0.5dBi
Power Supply:	Rechargeable Li-ion battery DC 3.7V/800mAh

Operation Frequency each of channel

Channel	Frequency	Channel	Frequency	Channel	Frequency	Channel	Frequency
0	2402MHz	10	2422MHz	20	2442MHz	30	2462MHz
1	2404MHz	11	2424MHz	21	2444MHz	31	2464MHz
...
8	2418MHz	18	2438MHz	28	2458MHz	38	2478MHz
9	2420MHz	19	2440MHz	29	2460MHz	39	2480MHz
Remark: Channel 0, 19 & 39 have been tested.							

4. Genera Information

4.1. Test environment and mode

Operating Environment:	
Temperature:	25.0 °C
Humidity:	56 % RH
Atmospheric Pressure:	1010 mbar
Test Mode:	
Engineering mode:	Keep the EUT in continuous transmitting by select channel and modulations(The value of duty cycle is 98.46%) with Fully-charged battery.
The sample was placed (0.1m below 1GHz, 1.5m above 1GHz) above the ground plane of 3m chamber. Measurements in both horizontal and vertical polarities were performed. During the test, each emission was maximized by: having the EUT continuously working, investigated all operating modes, rotated about all 3 axis (X, Y & Z) and considered typical configuration to obtain worst position, manipulating interconnecting cables, rotating the turntable, varying antenna height from 1m to 4m in both horizontal and vertical polarizations. The emissions worst-case are shown in Test Results of the following pages.	

4.2. Description of Support Units

The EUT has been tested as an independent unit together with other necessary accessories or support units. The following support units or accessories were used to form a representative test configuration during the tests.

Equipment	Model No.	Serial No.	FCC ID	Trade Name
Adapter	EP-TA20EWE	/	/	/

Note:

1. All the equipment/cables were placed in the worst-case configuration to maximize the emission during the test.
2. Grounding was established in accordance with the manufacturer's requirements and conditions for the intended use.
3. For conducted measurements (Output Power, 6dB Emission Bandwidth, Power Spectral Density, Spurious Emissions), the antenna of EUT is connected to the test equipment via temporary antenna connector, the antenna connector is soldered on the antenna port of EUT, and the temporary antenna connector is listed in the Test Instruments.

5. Facilities and Accreditations

5.1. Facilities

The test facility is recognized, certified, or accredited by the following organizations:

- FCC - Registration No.: 645098

Shenzhen Tongce Testing Lab

The 3m Semi-anechoic chamber has been registered and fully described in a report with the (FCC) Federal Communications Commission. The acceptance letter from the FCC is maintained in our files.

- IC - Registration No.: 10668A-1

The 3m Semi-anechoic chamber of Shenzhen TCT Testing Technology Co., Ltd. has been registered by Certification and Engineering Bureau of Industry Canada for radio equipment testing

5.2. Location

Shenzhen Tongce Testing Lab

Address: 1B/F., Building 1, Yibaolai Industrial Park, Qiaotou, Fuyong, Baoan District, Shenzhen, Guangdong, China

TEL: +86-755-27673339

5.3. Measurement Uncertainty

The reported uncertainty of measurement $y \pm U$, where expanded uncertainty U is based on a standard uncertainty multiplied by a coverage factor of $k=2$, providing a level of confidence of approximately 95 %.

No.	Item	MU
1	Conducted Emission	$\pm 2.56\text{dB}$
2	RF power, conducted	$\pm 0.12\text{dB}$
3	Spurious emissions, conducted	$\pm 0.11\text{dB}$
4	All emissions, radiated(<1G)	$\pm 3.92\text{dB}$
5	All emissions, radiated(>1G)	$\pm 4.28\text{dB}$
6	Temperature	$\pm 0.1^{\circ}\text{C}$
7	Humidity	$\pm 1.0\%$

6. Test Results and Measurement Data

6.1. Antenna requirement

Standard requirement:

FCC Part15 C Section 15.203 /247(c)

15.203 requirement:

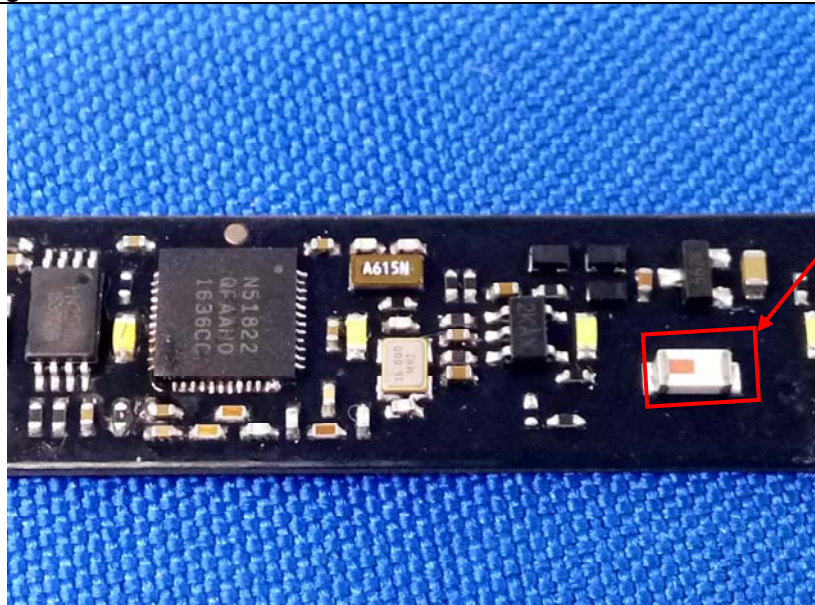
An intentional radiator shall be designed to ensure that no antenna other than that furnished by the responsible party shall be used with the device. The use of a permanently attached antenna or of an antenna that uses a unique coupling to the intentional radiator, the manufacturer may design the unit so that a broken antenna can be replaced by the user, but the use of a standard antenna jack or electrical connector is prohibited.

15.247(c) (1)(i) requirement:

(i) Systems operating in the 2400-2483.5 MHz band that is used exclusively for fixed. Point-to-point operations may employ transmitting antennas with directional gain greater than 6dBi provided the maximum conducted output power of the intentional radiator is reduced by 1 dB for every 3 dB that the directional gain of the antenna exceeds 6dBi.

E.U.T Antenna:

The Bluetooth antenna is a Multilayer Chip Antenna which permanently attached, and the best case gain of the antenna is 0.5dBi.



Antenna

6.2. Conducted Emission

6.2.1. Test Specification

Test Requirement:	FCC Part15 C Section 15.207														
Test Method:	ANSI C63.10:2013														
Frequency Range:	150 kHz to 30 MHz														
Receiver setup:	RBW=9 kHz, VBW=30 kHz, Sweep time=auto														
Limits:	<table><tr><th rowspan="2">Frequency range (MHz)</th><th colspan="2">Limit (dBuV)</th></tr><tr><th>Quasi-peak</th><th>Average</th></tr><tr><td>0.15-0.5</td><td>66 to 56*</td><td>56 to 46*</td></tr><tr><td>0.5-5</td><td>56</td><td>46</td></tr><tr><td>5-30</td><td>60</td><td>50</td></tr></table>	Frequency range (MHz)	Limit (dBuV)		Quasi-peak	Average	0.15-0.5	66 to 56*	56 to 46*	0.5-5	56	46	5-30	60	50
Frequency range (MHz)	Limit (dBuV)														
	Quasi-peak	Average													
0.15-0.5	66 to 56*	56 to 46*													
0.5-5	56	46													
5-30	60	50													
Test Setup:	<div><p style="text-align: center;">Reference Plane</p><p><i>Remark:</i> E.U.T: Equipment Under Test LISN: Line Impedance Stabilization Network Test table height=0.8m</p></div>														
Test Mode:	Charging + Transmitting Mode														
Test Procedure:	<div><div>1. The E.U.T is connected to an adapter through a line impedance stabilization network (L.I.S.N.). This provides a 50ohm/50uH coupling impedance for the measuring equipment.</div><div>2. The peripheral devices are also connected to the main power through a LISN that provides a 50ohm/50uH coupling impedance with 50ohm termination. (Please refer to the block diagram of the test setup and photographs).</div><div>3. Both sides of A.C. line are checked for maximum conducted interference. In order to find the maximum emission, the relative positions of equipment and all of the interface cables must be changed according to ANSI C63.10: 2013 on conducted measurement.</div></div>														
Test Result:	PASS														

6.2.2. Test Instruments

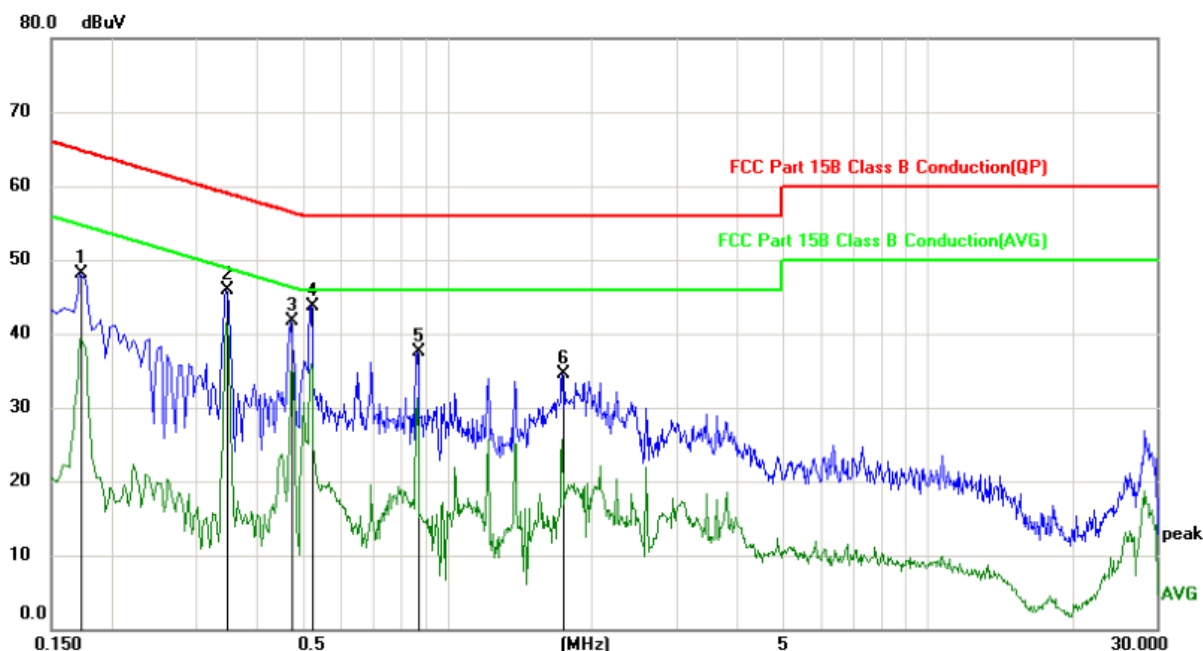
Conducted Emission Shielding Room Test Site (843)				
Equipment	Manufacturer	Model	Serial Number	Calibration Due
Test Receiver	R&S	ESPI	101401	Jun. 12, 2018
LISN	Schwarzbeck	NSLK 8126	8126453	Oct. 13, 2017
Coax cable (9KHz-30MHz)	TCT	CE-05	N/A	Oct. 13, 2017
EMI Test Software	Shurple Technology	EZ-EMC	N/A	N/A

Note: The calibration interval of the above test instruments is 12 months and the calibrations are traceable to international system unit (SI).

6.2.3. Test data

Please refer to following diagram for individual

Conducted Emission on Line Terminal of the power line (150 kHz to 30MHz)



Site: Phase: **L1** Temperature: 25
Limit: FCC Part 15B Class B Conduction(QP) Power: AC 120V/60Hz Humidity: 55 %

No.	Mk.	Freq. MHz	Reading Level dBμV	Correct Factor dB	Measure- ment dBμV	Limit dBμV	Over dB	Detector	Comment
1		0.1725	36.60	11.46	48.06	64.84	-16.78	peak	
2		0.3480	34.59	11.38	45.97	59.01	-13.04	peak	
3		0.4740	30.45	11.31	41.76	56.44	-14.68	peak	
4	*	0.5235	32.45	11.29	43.74	56.00	-12.26	peak	
5		0.8700	26.21	11.21	37.42	56.00	-18.58	peak	
6		1.7385	23.01	11.57	34.58	56.00	-21.42	peak	

Note:

Freq. = Emission frequency in MHz

Reading level (dBμV) = Receiver reading

Corr. Factor (dB) = Antenna factor + Cable loss

Measurement (dBμV) = Reading level (dBμV) + Corr. Factor (dB)

Limit (dBμV) = Limit stated in standard

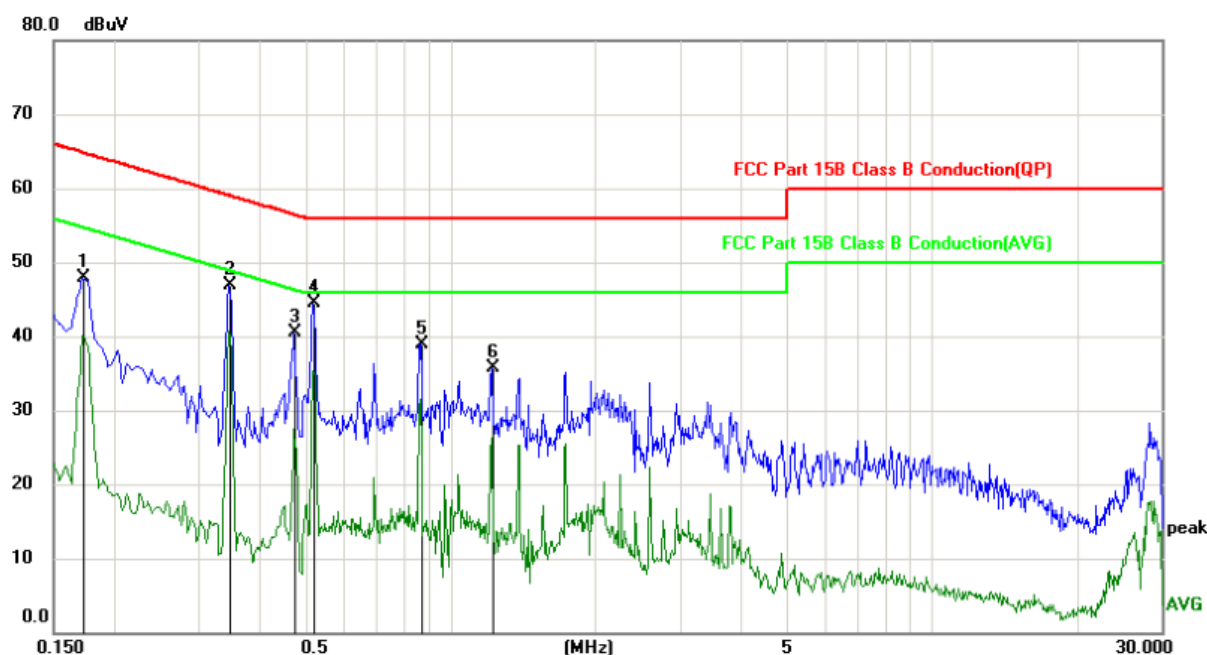
Margin (dB) = Measurement (dBμV) – Limits (dBμV)

Q.P. =Quasi-Peak

AVG =average

* is meaning the worst frequency has been tested in the frequency range 150 kHz to 30MHz

Conducted Emission on Neutral Terminal of the power line (150 kHz to 30MHz)



Site: _____ Phase: **N** Temperature: 25
 Limit: FCC Part 15B Class B Conduction(QP) Power: AC 120V/60Hz Humidity: 55 %

No.	Mk.	Freq. MHz	Reading Level dBuV	Correct Factor dB	Measure- ment dBuV	Limit dBuV	Over dB	Detector	Comment
1		0.1725	36.38	11.46	47.84	64.84	-17.00	peak	
2		0.3480	35.55	11.38	46.93	59.01	-12.08	peak	
3		0.4740	29.22	11.31	40.53	56.44	-15.91	peak	
4	*	0.5190	33.12	11.29	44.41	56.00	-11.59	peak	
5		0.8700	27.64	11.21	38.85	56.00	-17.15	peak	
6		1.2164	24.47	11.31	35.78	56.00	-20.22	peak	

Note1:

Freq. = Emission frequency in MHz

Reading level (dBuV) = Receiver reading

Corr. Factor (dB) = Antenna factor + Cable loss

Measurement (dBuV) = Reading level (dBuV) + Corr. Factor (dB)

Limit (dBuV) = Limit stated in standard


Margin (dB) = Measurement (dBuV) - Limits (dBuV)

Q.P. =Quasi-Peak AVG =average

* is meaning the worst frequency has been tested in the frequency range 150 kHz to 30MHz.

6.3. Conducted Output Power

6.3.1. Test Specification

Test Requirement:	FCC Part15 C Section 15.247 (b)(3)
Test Method:	KDB558074
Limit:	30dBm
Test Setup:	 <p style="text-align: center;">Spectrum Analyzer EUT</p>
Test Mode:	Refer to item 4.1
Test Procedure:	<ol style="list-style-type: none"> The testing follows the Measurement Procedure of FCC KDB No. 558074 DTS D01 Meas. Guidance v03r05. Set spectrum analyzer as following: <ol style="list-style-type: none"> Set the RBW \geq DTS bandwidth. Set VBW $\geq 3 \times$ RBW. Set span $\geq 3 \times$ RBW Sweep time = auto couple. Detector = peak. Trace mode = max hold. Allow trace to fully stabilize. Use peak marker function to determine the peak amplitude level.
Test Result:	PASS

6.3.2. Test Instruments

Equipment	Manufacturer	Model	Serial Number	Calibration Due
Spectrum Analyzer	R&S	FSU	200054	Oct. 13, 2017
RF cable (9kHz-26.5GHz)	TCT	RE-06	N/A	Oct. 13, 2017
Antenna Connector	TCT	RFC-01	N/A	Oct. 13, 2017

Note: The calibration interval of the above test instruments is 12 months and the calibrations are traceable to international system unit (SI).

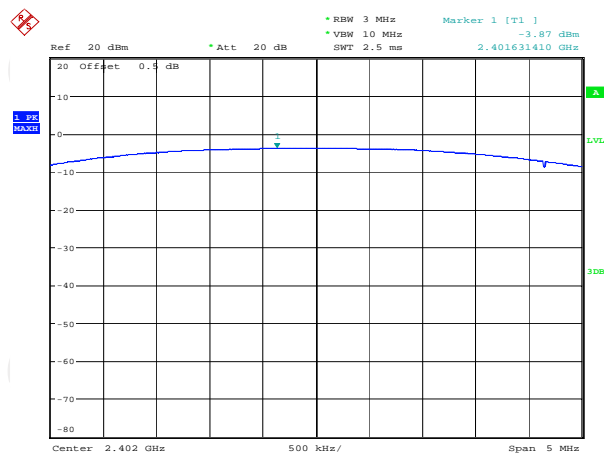
6.3.3. Test Data

BT LE mode			
Test channel	Maximum Conducted Output Power (dBm)	Limit (dBm)	Result
Lowest	-3.87	30.00	PASS
Middle	-4.19	30.00	PASS
Highest	-4.65	30.00	PASS

Test plots as follows:

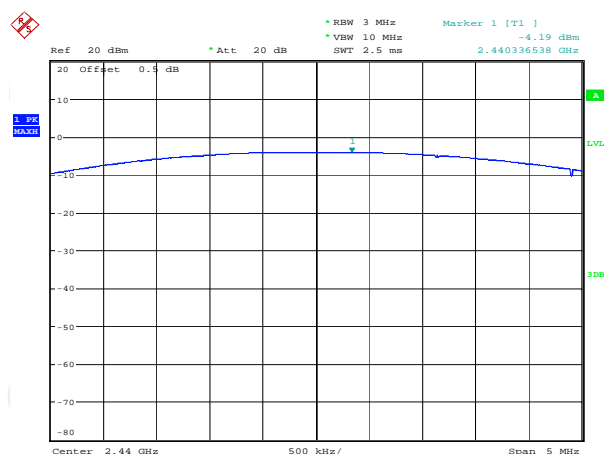
BT LE mode

Lowest channel



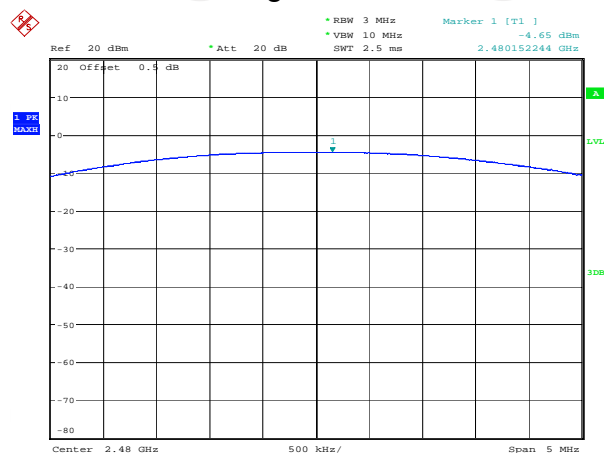
Date: 10.JUL.2017 20:35:27

Middle channel



Date: 10.JUL.2017 20:34:49


Highest channel



Date: 10.JUL.2017 20:33:34

6.4. Emission Bandwidth

6.4.1. Test Specification

Test Requirement:	FCC Part15 C Section 15.247 (a)(2)
Test Method:	KDB558074
Limit:	>500kHz
Test Setup:	 <p>Spectrum Analyzer EUT</p>
Test Mode:	Refer to item 4.1
Test Procedure:	<ol style="list-style-type: none"> 1. The testing follows FCC KDB Publication No. 558074 DTS D01 Meas. Guidance v03r05. 2. Set to the maximum power setting and enable the EUT transmit continuously. 3. Make the measurement with the spectrum analyzer's resolution bandwidth (RBW) = 100 kHz. Set the Video bandwidth (VBW) = 300 kHz. In order to make an accurate measurement. The 6dB bandwidth must be greater than 500 kHz. 4. Measure and record the results in the test report.
Test Result:	PASS

6.4.2. Test Instruments

RF Test Room				
Equipment	Manufacturer	Model	Serial Number	Calibration Due
Spectrum Analyzer	R&S	FSU	200054	Oct. 13, 2017
RF cable (9kHz-26.5GHz)	TCT	RE-06	N/A	Oct. 13, 2017
Antenna Connector	TCT	RFC-01	N/A	Oct. 13, 2017

Note: The calibration interval of the above test instruments is 12 months and the calibrations are traceable to international system unit (SI).

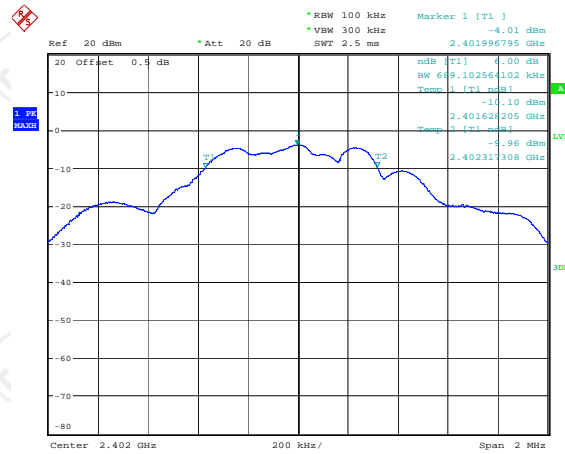
6.4.3. Test data

Test channel	6dB Emission Bandwidth (kHz)		
	BT LE mode	Limit	Result
Lowest	689.10	>500k	PASS
Middle	663.46	>500k	
Highest	660.26	>500k	

Test plots as follows:

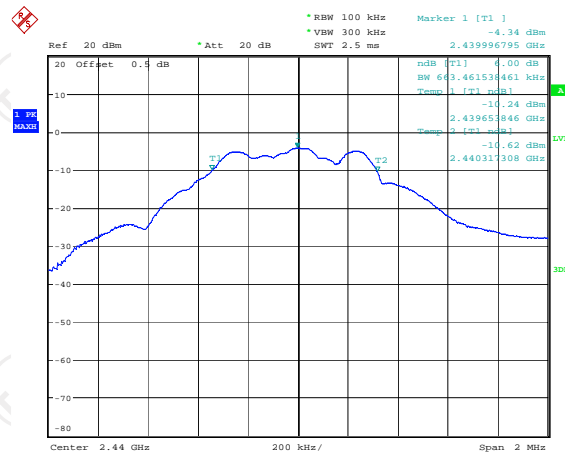
BT LE mode

Lowest channel



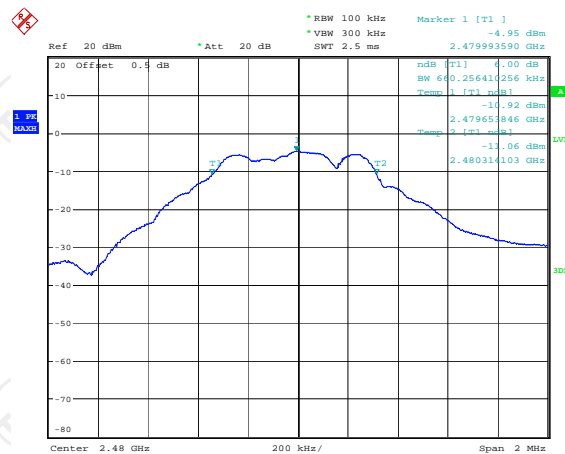
Date: 10.JUL.2017 20:27:51

Middle channel



Date: 10.JUL.2017 20:28:35


Highest channel



Date: 10.JUL.2017 20:29:22

6.5. Power Spectral Density

6.6. Test Specification

Test Requirement:	FCC Part15 C Section 15.247 (e)
Test Method:	KDB558074
Limit:	The peak power spectral density shall not be greater than 8dBm in any 3kHz band at any time interval of continuous transmission.
Test Setup:	 <p style="text-align: center;">Spectrum Analyzer EUT</p>
Test Mode:	Refer to item 4.1
Test Procedure:	<ol style="list-style-type: none"> 1. The testing follows Measurement Procedure 10.2 Method PKPSD of FCC KDB Publication No.558074 D01 DTS Meas. Guidance v03r05 2. The RF output of EUT was connected to the spectrum analyzer by RF cable and attenuator. The path loss was compensated to the results for each measurement. 3. Set to the maximum power setting and enable the EUT transmit continuously. 4. Make the measurement with the spectrum analyzer's resolution bandwidth (RBW): $3\text{ kHz} \leq \text{RBW} \leq 100\text{ kHz}$. Video bandwidth VBW $\geq 3 \times \text{RBW}$. In order to make an accurate measurement, set the span to 1.5 times DTS Channel Bandwidth. (6dB BW) 5. Detector = peak, Sweep time = auto couple, Trace mode = max hold, Allow trace to fully stabilize. Use the peak marker function to determine the maximum power level. 6. Measure and record the results in the test report.
Test Result:	PASS

6.6.1. Test Instruments

RF Test Room				
Equipment	Manufacturer	Model	Serial Number	Calibration Due
Spectrum Analyzer	R&S	FSU	200054	Oct. 13, 2017
RF cable (9kHz-26.5GHz)	TCT	RE-06	N/A	Oct. 13, 2017
Antenna Connector	TCT	RFC-01	N/A	Oct. 13, 2017

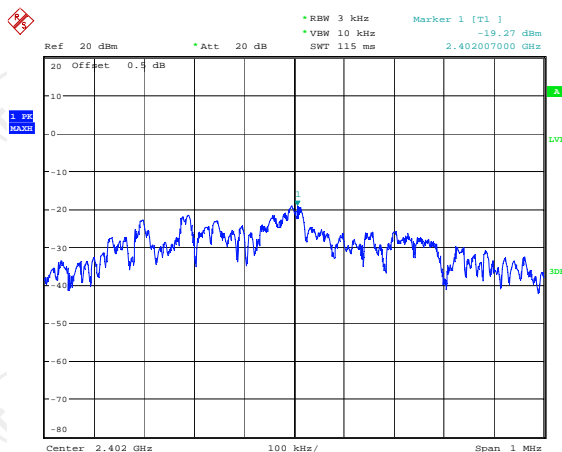
Note: The calibration interval of the above test instruments is 12 months and the calibrations are traceable to international system unit (SI).

6.6.2. Test data

Test channel	Power Spectral Density (dBm/3kHz)		
	BT LE mode	Limit	Result
Lowest	-19.27	8 dBm/3kHz	PASS
Middle	-18.01	8 dBm/3kHz	
Highest	-19.93	8 dBm/3kHz	

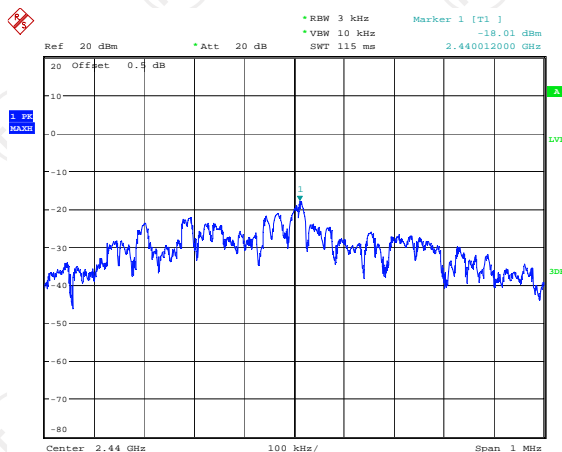
Test plots as follows:

Lowest channel



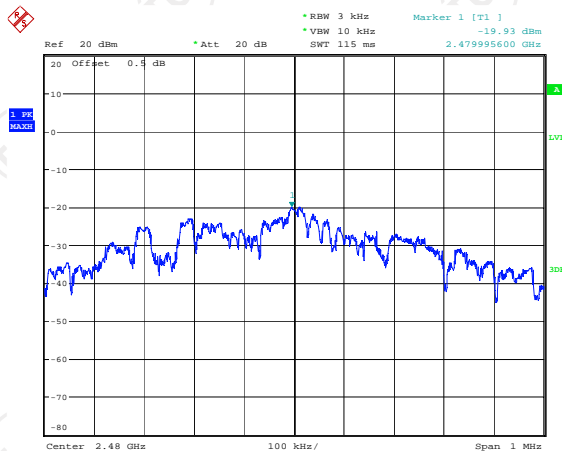
Date: 10.JUL.2017 20:39:25

Middle channel



Date: 10.JUL.2017 20:40:13

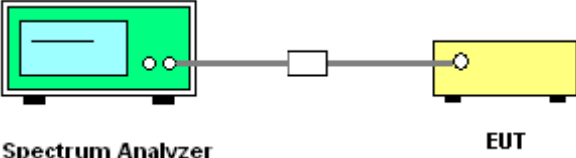
Highest channel



Date: 10.JUL.2017 20:41:12

6.7. Conducted Band Edge and Spurious Emission Measurement

6.7.1. Test Specification

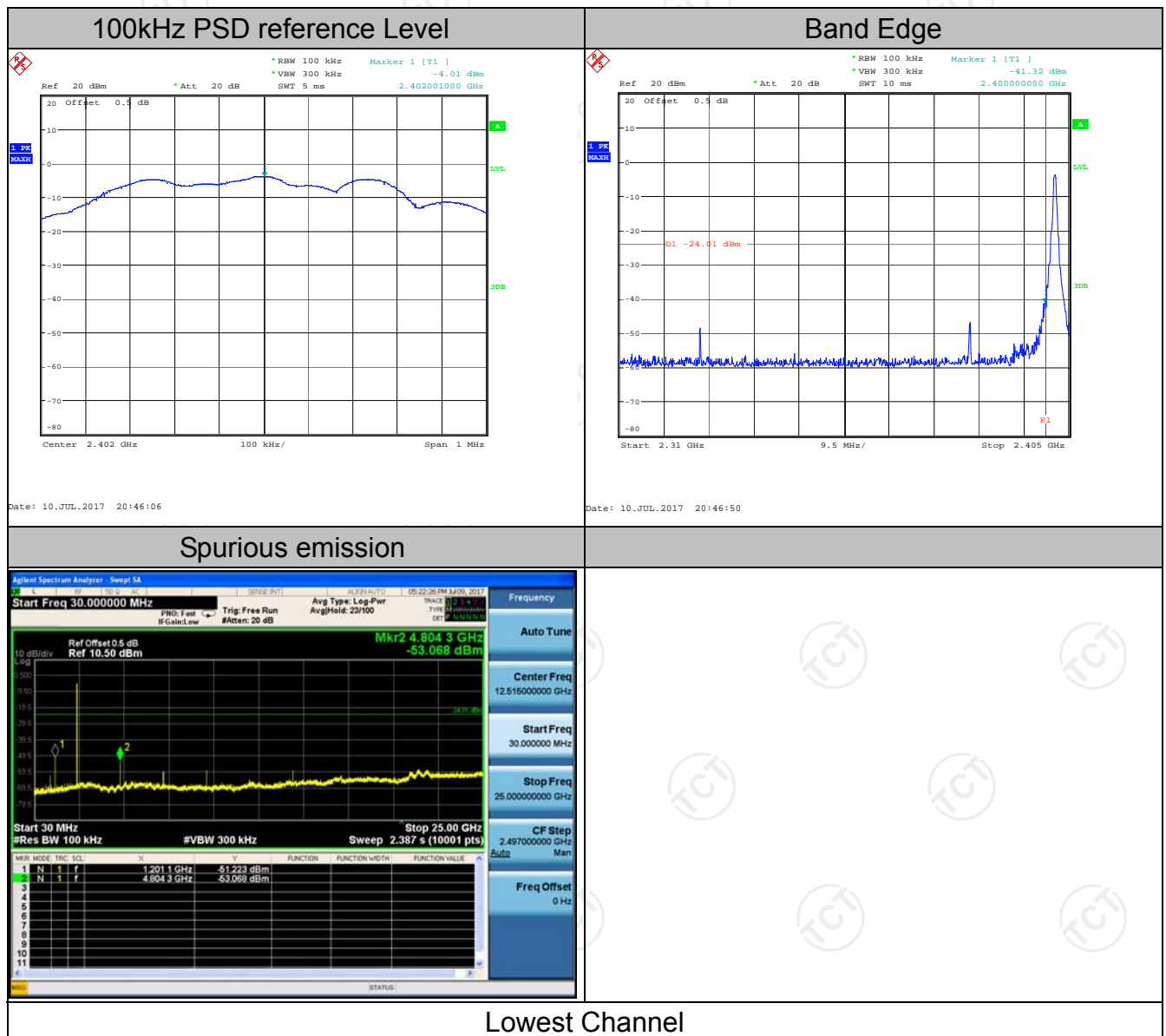
Test Requirement:	FCC Part15 C Section 15.247 (d)
Test Method:	KDB558074
Limit:	In any 100 kHz bandwidth outside of the authorized frequency band, the emissions which fall in the non-restricted bands shall be attenuated at least 20 dB / 30dB relative to the maximum PSD level in 100 kHz by RF conducted measurement and radiated emissions which fall in the restricted bands, as defined in Section 15.205(a), must also comply with the radiated emission limits specified in Section 15.209(a).
Test Setup:	 <p style="text-align: center;">Spectrum Analyzer EUT</p>
Test Mode:	Refer to item 4.1
Test Procedure:	<ol style="list-style-type: none"> 1. The RF output of EUT was connected to the spectrum analyzer by RF cable and attenuator. The path loss was compensated to the results for each measurement. 2. Set to the maximum power setting and enable the EUT transmit continuously. 3. Set RBW = 100 kHz, VBW=300 kHz, Peak Detector. Unwanted Emissions measured in any 100 kHz bandwidth outside of the authorized frequency band shall be attenuated by at least 20 dB relative to the maximum in-band peak PSD level in 100 kHz when maximum peak conducted output power procedure is used. If the transmitter complies with the conducted power limits based on the use of RMS averaging over a time interval, the attenuation required under this paragraph shall be 30 dB instead of 20 dB per 15.247(d). 4. Measure and record the results in the test report. 5. The RF fundamental frequency should be excluded against the limit line in the operating frequency band.
Test Result:	PASS

6.7.2. Test Instruments

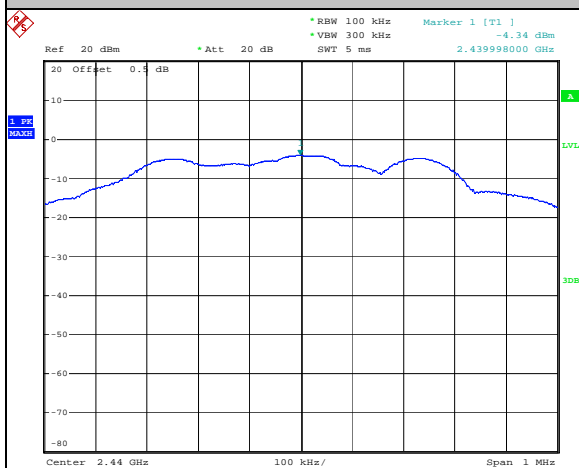
RF Test Room				
Equipment	Manufacturer	Model	Serial Number	Calibration Due
Spectrum Analyzer	R&S	FSU	200054	Oct. 13, 2017
Spectrum Analyzer	Agilent	N9020A	200061	Oct. 13, 2017
RF cable (9kHz-26.5GHz)	TCT	RE-06	N/A	Oct. 13, 2017
Antenna Connector	TCT	RFC-01	N/A	Oct. 13, 2017

Note: The calibration interval of the above test instruments is 12 months and the calibrations are traceable to international system unit (SI).

6.7.3. Test Data

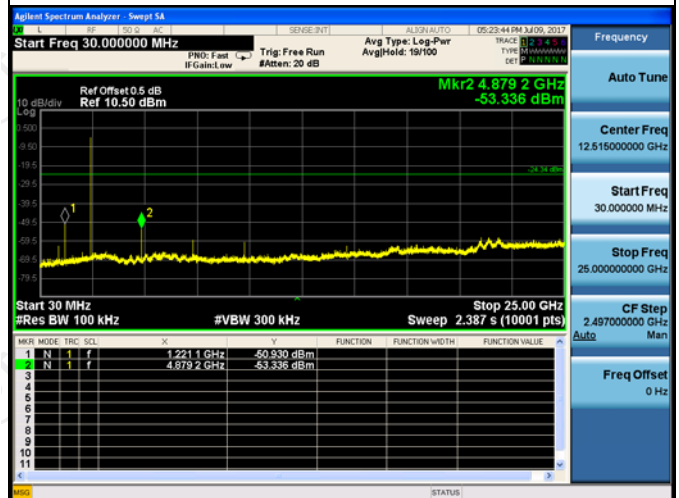


100kHz PSD reference Level



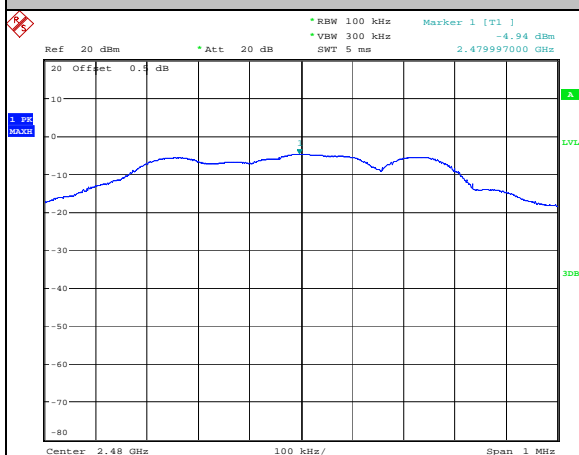
Date: 10.JUL.2017 20:45:30

Spurious emission



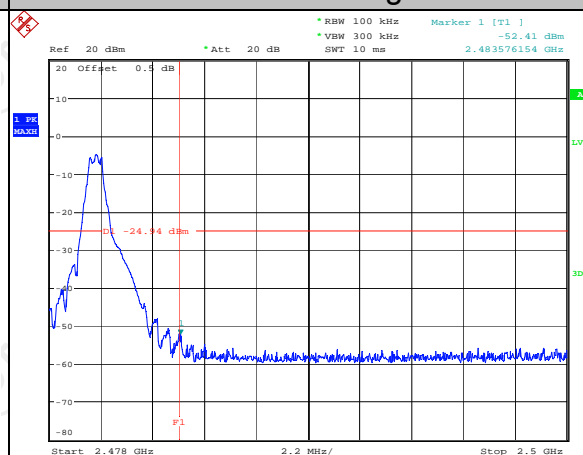
Middle Channel

100kHz PSD reference Level



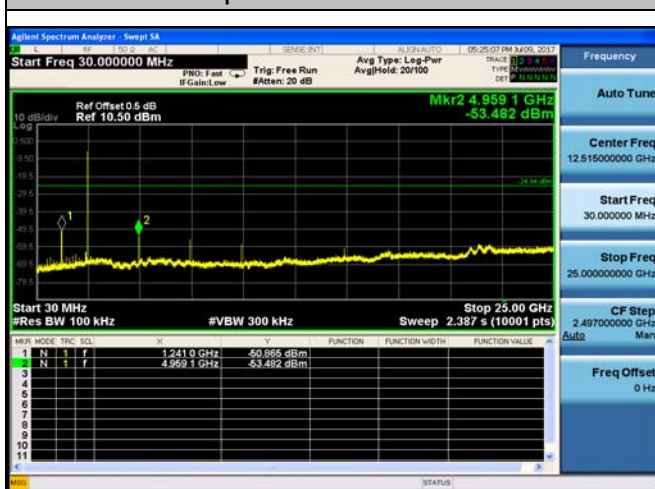
Date: 10.JUL.2017 20:43:30

Band Edge



Date: 10.JUL.2017 20:44:28

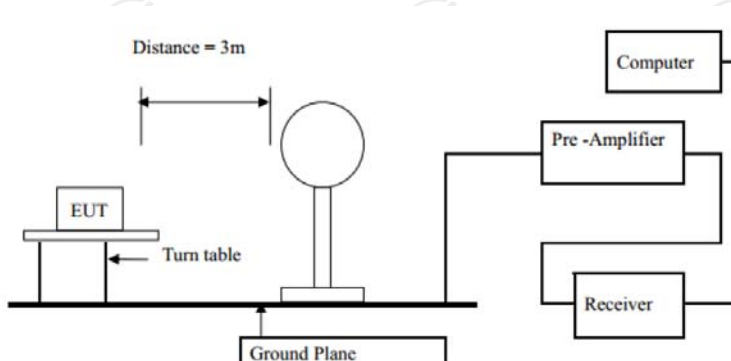
Spurious emission

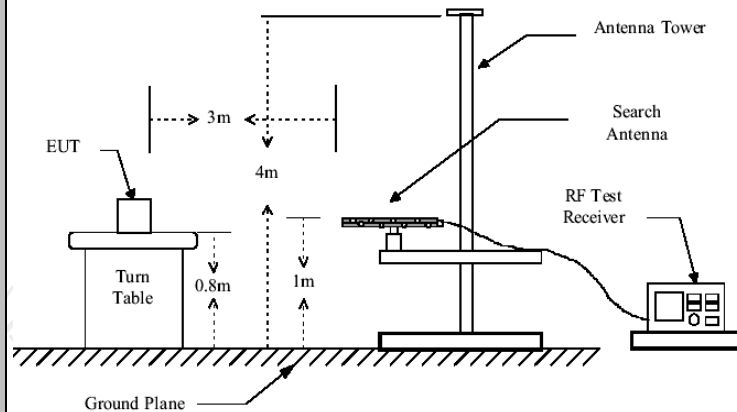


Highest Channel

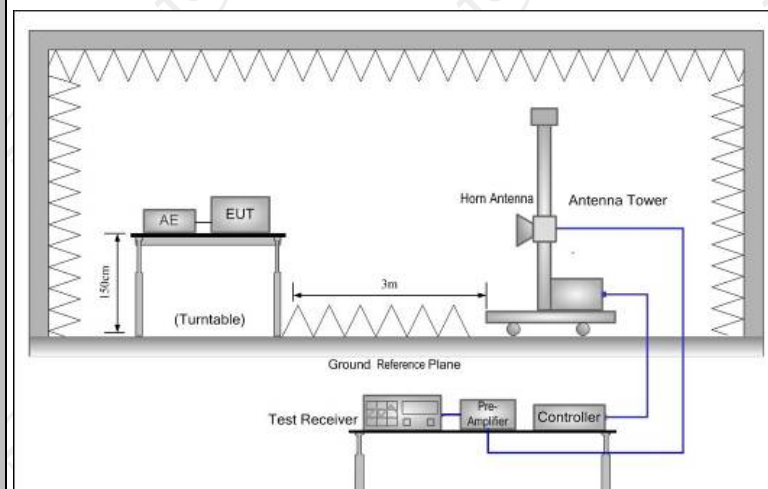
6.8. Radiated Spurious Emission Measurement

6.8.1. Test Specification

Test Requirement:	FCC Part15 C Section 15.209			
Test Method:	ANSI C63.10: 2013			
Frequency Range:	9 kHz to 25 GHz			
Measurement Distance:	3 m			
Antenna Polarization:	Horizontal & Vertical			
Operation mode:	Refer to item 4.1			
Receiver Setup:	Frequency	Detector	RBW	VBW
	9kHz- 150kHz	Quasi-peak	200Hz	1kHz
	150kHz- 30MHz	Quasi-peak	9kHz	30kHz
	30MHz-1GHz	Quasi-peak	100KHz	300KHz
	Above 1GHz	Peak	1MHz	3MHz
Limit:	Remark			
	Quasi-peak Value			
	Quasi-peak Value			
	Quasi-peak Value			
	Peak Value			
Test setup:	Average Value			
Test setup:	Frequency	Field Strength (microvolts/meter)	Measurement Distance (meters)	
	0.009-0.490	2400/F(KHz)	300	
	0.490-1.705	24000/F(KHz)	30	
	1.705-30	30	30	
	30-88	100	3	
Test setup:	88-216	150	3	
	216-960	200	3	
	Above 960	500	3	
Test setup:	Frequency	Field Strength (microvolts/meter)	Measurement Distance (meters)	Detector
	Above 1GHz	500	3	Average
		5000	3	Peak
Test setup:	For radiated emissions below 30MHz			
				
	30MHz to 1GHz			



Above 1GHz



Test Procedure:

- For the radiated emission test below 1GHz:
The EUT was placed on a turntable with 0.8 meter above ground. The EUT was set 3 meters from the interference receiving antenna, which was mounted on the top of a variable height antenna tower. The EUT was arranged to its worst case and then tune the antenna tower (from 1 m to 4 m) and turntable (from 0 degree to 360 degrees) to find the maximum reading. A pre-amp and a high PASS filter are used for the test in order to get better signal level.
- For the radiated emission test above 1GHz:
Place the measurement antenna on a turntable with 1.5 meter above ground, which is away from each area of the EUT determined to be a source of emissions at the specified measurement distance, while keeping the measurement antenna aimed at the source of emissions at each frequency of significant emissions, with polarization oriented for maximum response. The measurement antenna may have to be higher or lower than the EUT, depending on the radiation pattern of the emission and staying aimed at the emission source for receiving the maximum signal. The final

	<p>measurement antenna elevation shall be that which maximizes the emissions. The measurement antenna elevation for maximum emissions shall be restricted to a range of heights of from 1 m to 4 m above the ground or reference ground plane.</p> <p>2. Corrected Reading: Antenna Factor + Cable Loss + Read Level - Preamp Factor = Level</p> <p>3. For measurement below 1GHz, If the emission level of the EUT measured by the peak detector is 3 dB lower than the applicable limit, the peak emission level will be reported. Otherwise, the emission measurement will be repeated using the quasi-peak detector and reported.</p> <p>4. Use the following spectrum analyzer settings:</p> <p>(1) Span shall wide enough to fully capture the emission being measured;</p> <p>(2) Set RBW=100 kHz for $f < 1$ GHz; $VBW \geq RBW$; Sweep = auto; Detector function = peak; Trace = max hold;</p> <p>(3) Set RBW = 1 MHz, VBW= 3MHz for $f \geq 1$ GHz for peak measurement.</p> <p>For average measurement: VBW = 10 Hz, when duty cycle is no less than 98 percent. $VBW \geq 1/T$, when duty cycle is less than 98 percent where T is the minimum transmission duration over which the transmitter is on and is transmitting at its maximum power control level for the tested mode of operation.</p>
Test mode:	Refer to section 4.1 for details
Test results:	PASS

6.8.2. Test Instruments

Radiated Emission Test Site (966)				
Name of Equipment	Manufacturer	Model	Serial Number	Calibration Due
Test Receiver	ROHDE&SCHW ARZ	ESVD	100008	Oct. 13, 2017
Spectrum Analyzer	ROHDE&SCHW ARZ	FSQ	200061	Oct. 13, 2017
Pre-amplifier	EM Electronics Corporation CO.,LTD	EM30265	07032613	Oct. 13, 2017
Pre-amplifier	HP	8447D	2727A05017	Oct. 13, 2017
Loop antenna	ZHINAN	ZN30900A	12024	Oct. 13, 2017
Broadband Antenna	Schwarzbeck	VULB9163	340	Oct. 13, 2017
Horn Antenna	Schwarzbeck	BBHA 9120D	631	Oct. 13, 2017
Horn Antenna	Schwarzbeck	BBH 9170	582	Jun. 07, 2018
Antenna Mast	Keleto	CC-A-4M	N/A	N/A
Coax cable (9KHz-1GHz)	TCT	RE-low-01	N/A	Oct. 13, 2017
Coax cable (9KHz-40GHz)	TCT	RE-high-02	N/A	Oct. 13, 2017
Coax cable (9KHz-1GHz)	TCT	RE-low-03	N/A	Oct. 13, 2017
Coax cable (9KHz-40GHz)	TCT	RE-high-04	N/A	Oct. 13, 2017
EMI Test Software	Shurple Technology	EZ-EMC	N/A	N/A

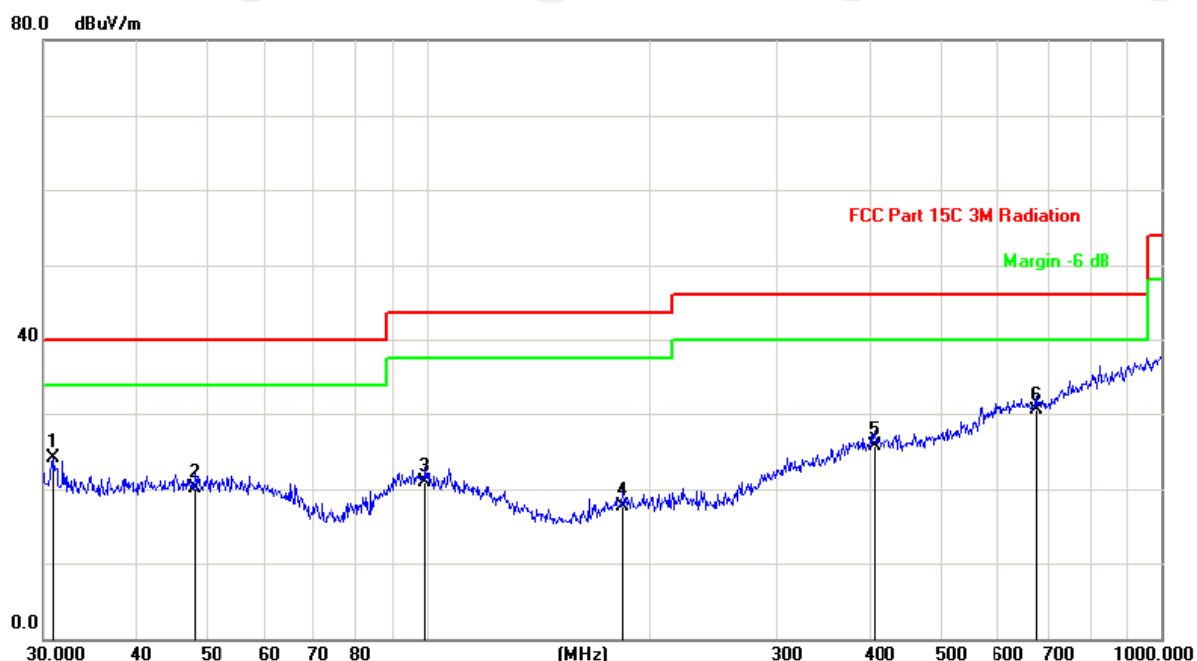
Note: The calibration interval of the above test instruments is 12 months and the calibrations are traceable to international system unit (SI).

6.8.3. Test Data

Please refer to following diagram for individual

Below 1GHz

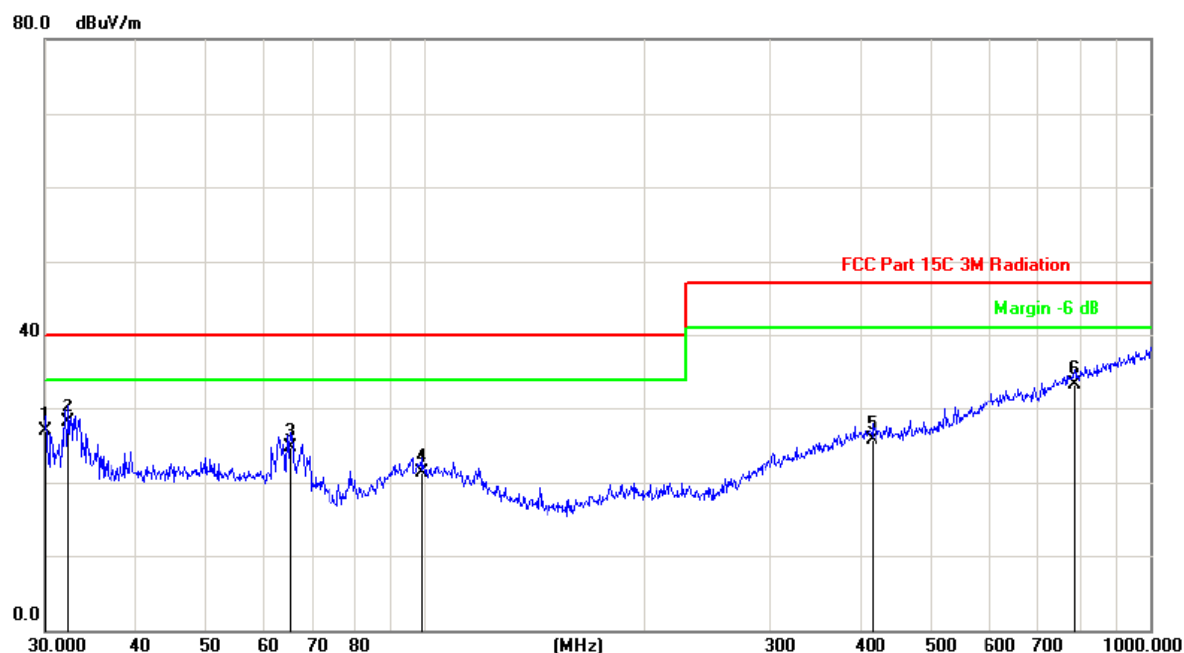
Horizontal:



Site: Polarization: **Horizontal** Temperature: 25
Limit: FCC Part 15C 3M Radiation Power: Humidity: 55 %

No.	Mk.	Freq. MHz	Reading Level dBuV	Correct Factor dB	Measure- ment dBuV/m	Limit dB/m	Over dB	Antenna Height cm	Table Degree degree	Comment
1		30.9619	32.01	-7.93	24.08	40.00	-15.92	QP		
2		48.1626	27.02	-6.82	20.20	40.00	-19.80	QP		
3		99.1797	27.44	-6.54	20.90	43.50	-22.60	QP		
4		184.4898	27.58	-9.78	17.80	43.50	-25.70	QP		
5		406.0880	27.21	-1.51	25.70	46.00	-20.30	QP		
6	*	675.2080	27.41	3.09	30.50	46.00	-15.50	QP		

Vertical:



Site: Polarization: **Vertical** Temperature: 25
Limit: FCC Part 15C 3M Radiation Power: Humidity: 55 %

No.	Mk.	Freq. MHz	Reading Level dBuV	Correct Factor dB	Measure- ment dBuV/m	Limit dB/m	Over dB	Antenna Height cm	Table Degree degree	Comment
1		30.1054	34.91	-8.01	26.90	40.00	-13.10	QP		
2	*	32.2925	35.99	-7.79	28.20	40.00	-11.80	QP		
3		65.3432	34.20	-9.40	24.80	40.00	-15.20	QP		
4		98.8326	27.88	-6.58	21.30	40.00	-18.70	QP		
5		414.7223	27.37	-1.57	25.80	47.00	-21.20	QP		
6		785.0935	27.49	5.91	33.40	47.00	-13.60	QP		

Note: 1. The low frequency, which started from 9KHz~30MHz, was pre-scanned and the result which was 20dB lower than the limit line per 15.31(o) was not reported
2. Measurements were conducted in all three channels (high, middle, low), and the worst case Mode (Middle channel) was submitted only.

Above 1GHz

Low channel: 2402 MHz

Frequency (MHz)	Ant. Pol. H/V	Peak reading (dBμV)	AV reading (dBμV)	Correction Factor (dB/m)	Emission Level		Peak limit (dBμV/m)	AV limit (dBμV/m)	Margin (dB)
					Peak (dBμV/m)	AV (dBμV/m)			
2390	H	48.30	---	-7.52	40.78	---	74	54	-13.22
4804	H	44.23	---	7.44	51.67	---	74	54	-2.33
7206	H	36.51	---	13.54	50.05	---	74	54	-3.95
---	H	---	---	---	---	---	---	---	---
2390	V	50.17	---	-7.52	42.65	---	74	54	-11.35
4804	V	43.63	---	7.44	51.07	---	74	54	-2.93
7206	V	36.36	---	13.54	49.90	---	74	54	-4.10
---	V	---	---	---	---	---	---	---	---

Middle channel: 2440MHz

Frequency (MHz)	Ant. Pol. H/V	Peak reading (dBμV)	AV reading (dBμV)	Correction Factor (dB/m)	Emission Level		Peak limit (dBμV/m)	AV limit (dBμV/m)	Margin (dB)
					Peak (dBμV/m)	AV (dBμV/m)			
4880	H	42.32	---	7.01	49.33	---	74	54	-4.67
7320	H	35.16	---	13.21	48.37	---	74	54	-5.63
---	H	---	---	---	---	---	---	---	---
4880	V	43.28	---	7.01	50.29	---	74	54	-3.71
7320	V	34.63	---	13.21	47.84	---	74	54	-6.16
---	V	---	---	---	---	---	---	---	---

High channel: 2480 MHz

Frequency (MHz)	Ant. Pol. H/V	Peak reading (dBμV)	AV reading (dBμV)	Correction Factor (dB/m)	Emission Level		Peak limit (dBμV/m)	AV limit (dBμV/m)	Margin (dB)
					Peak (dBμV/m)	AV (dBμV/m)			
2483.5	H	47.22	---	-7.52	39.70	---	74	54	-14.30
4960	H	42.35	---	7.44	49.79	---	74	54	-4.21
7440	H	33.91	---	13.54	47.45	---	74	54	-6.55
---	H	---	---	---	---	---	---	---	---
2483.5	V	47.02	---	-7.52	39.50	---	74	54	-14.50
4960	V	41.63	---	7.44	49.07	---	74	54	-4.93
7440	V	33.48	---	13.54	47.02	---	74	54	-6.98
---	V	---	---	---	---	---	---	---	---

Note:

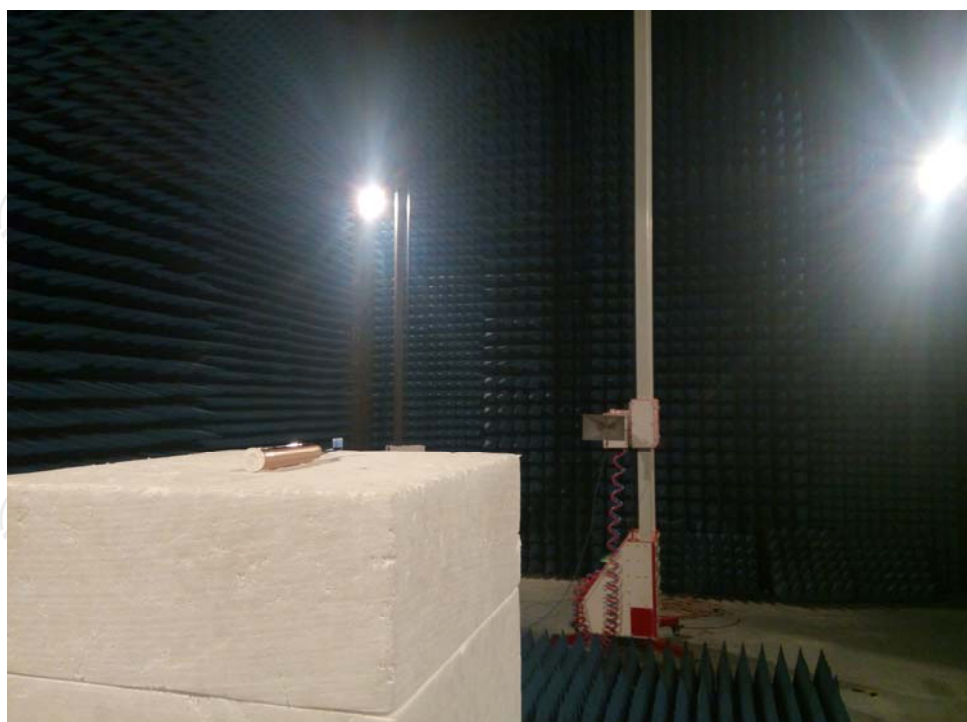
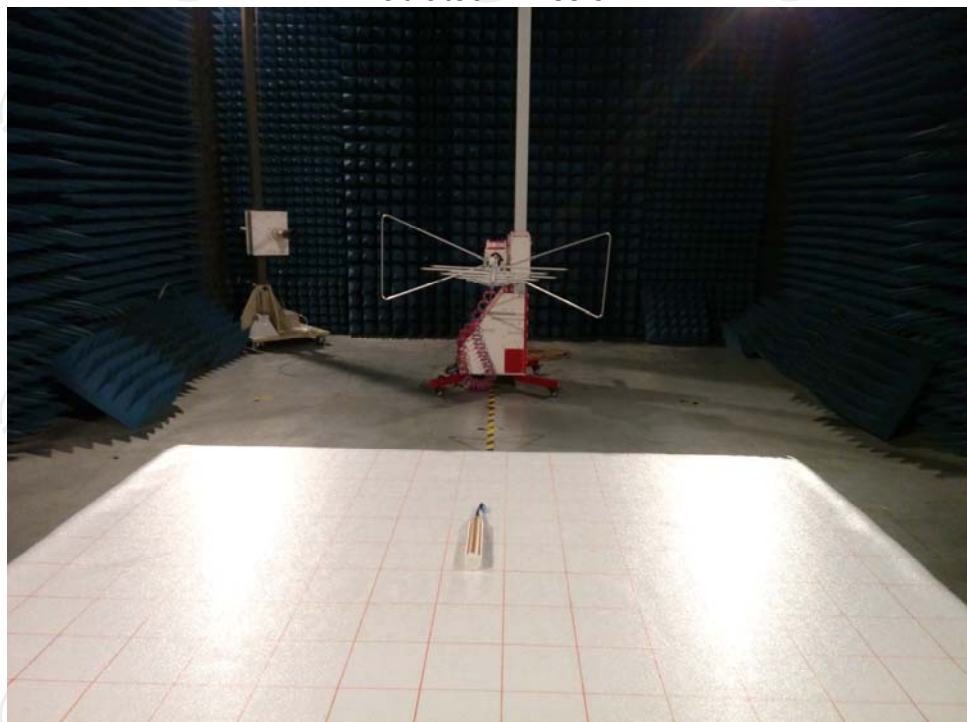
1. Emission Level=Peak Reading + Correction Factor; Correction Factor= Antenna Factor + Cable loss – Pre-amplifier
2. Margin (dB) = Emission Level (Peak) (dBμV/m)-Average limit (dBμV/m)
3. The emission levels of other frequencies are very lower than the limit and not show in test report.
4. Measurements were conducted from 1 GHz to the 10th harmonic of highest fundamental frequency.
5. Data of measurement shown "—" in the above table mean that the reading of emissions is attenuated more than 20 dB below the limits or the field strength is too small to be measured.

Appendix A: Photographs of Test Setup

Product: Hapee Sonic Vibration Toothbrush

Model: B017B/02

Radiated Emission

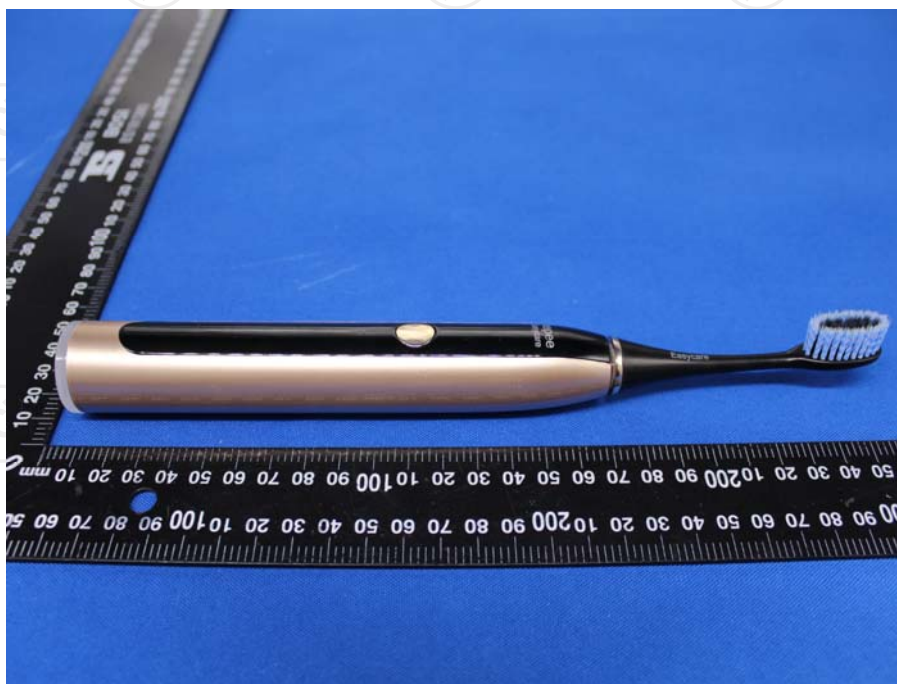


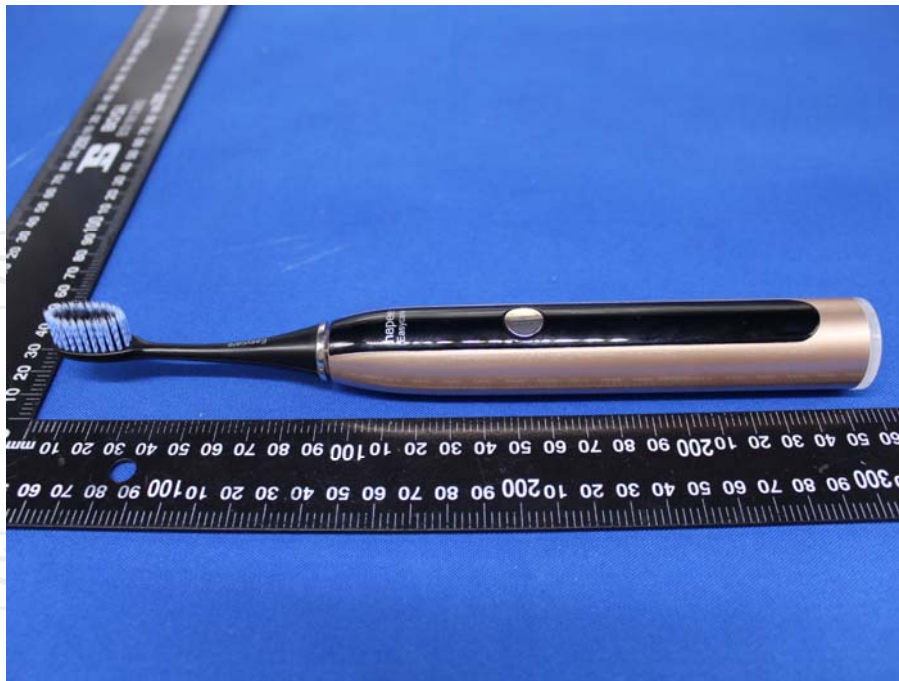
Conducted Emission

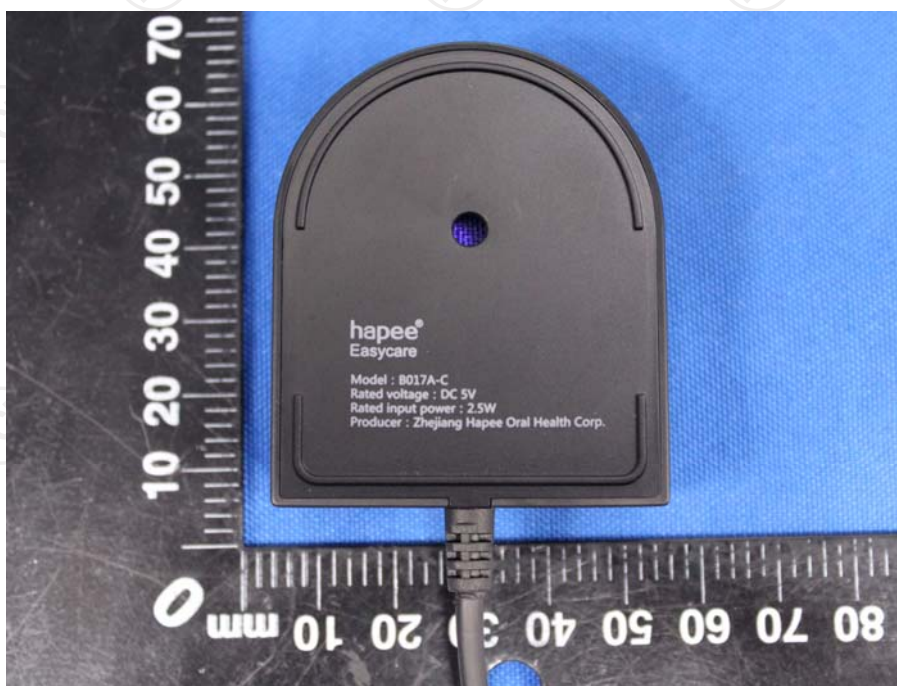


Appendix B: Photographs of EUT
Product: Hapee Sonic Vibration Toothbrush
Model: B017B/02
External Photos



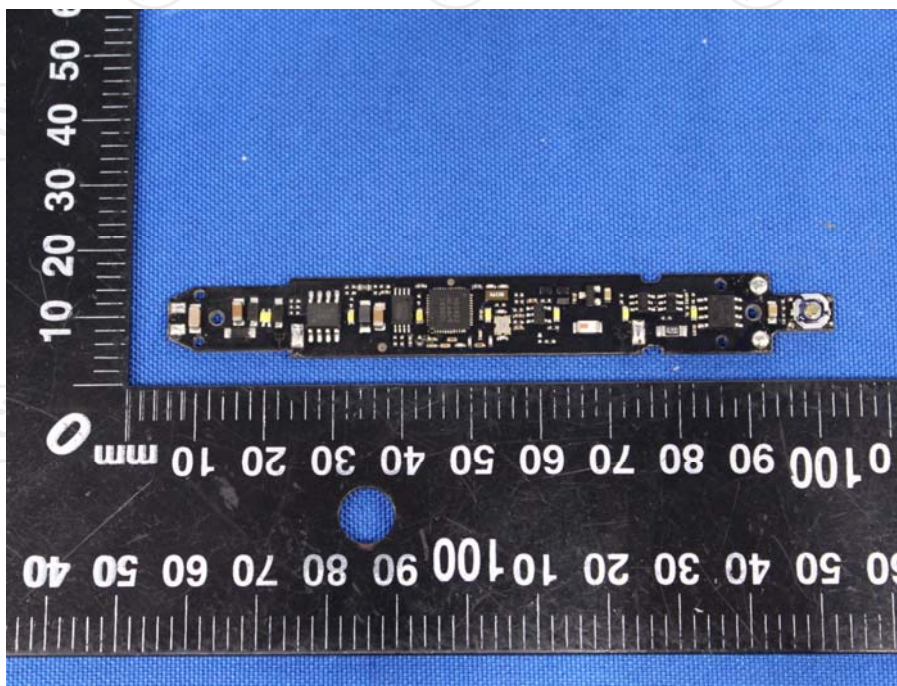
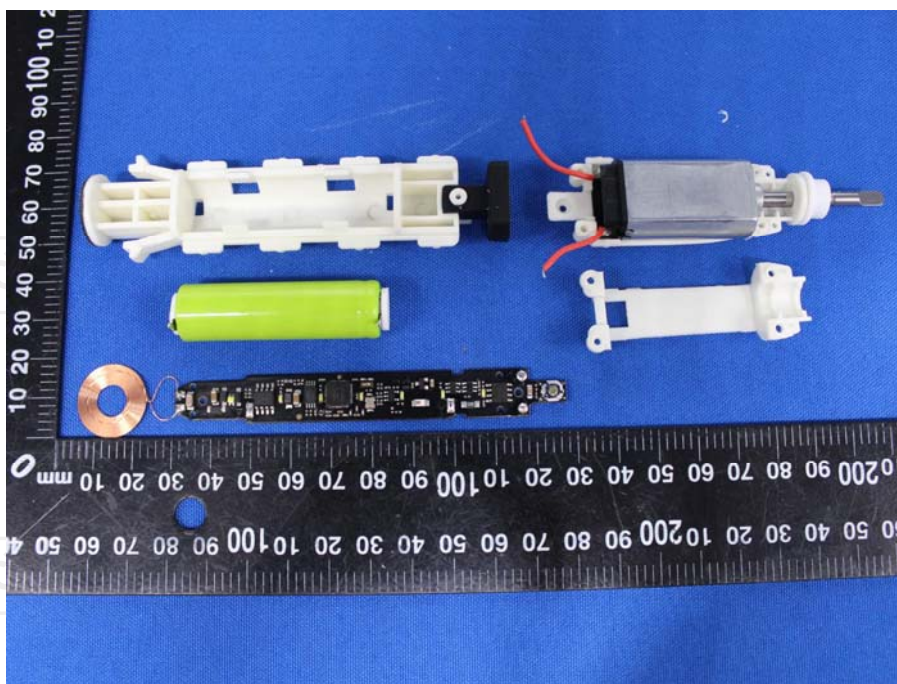


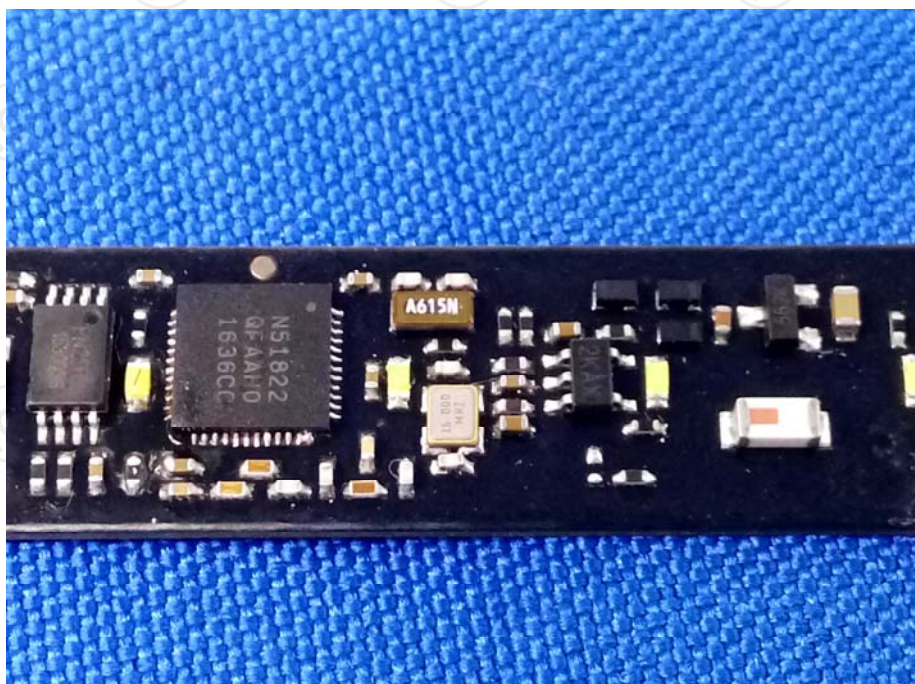
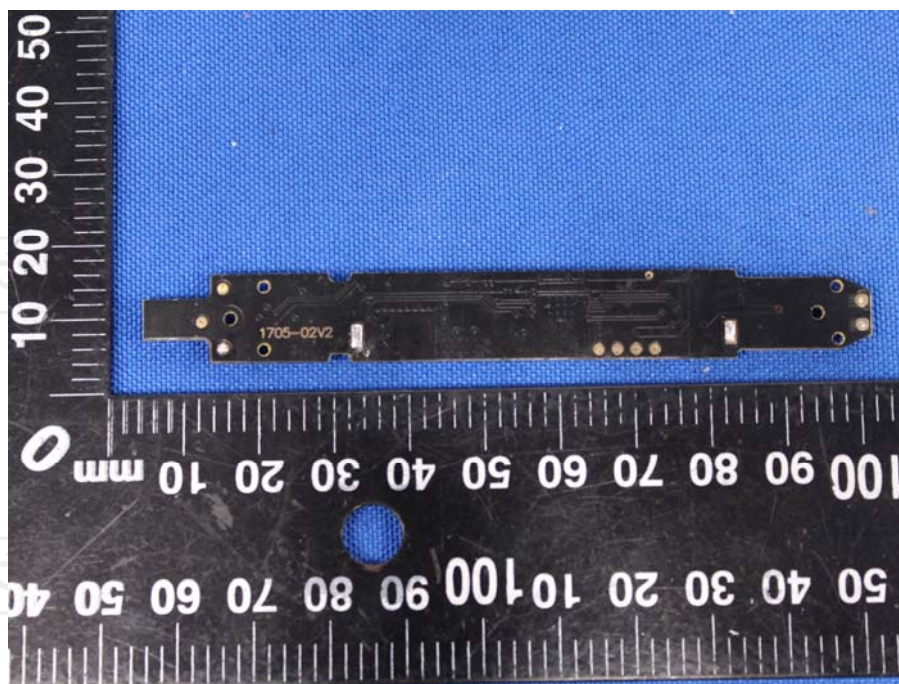




Product: Hapee Sonic Vibration Toothbrush
Model: B017B/02
Internal Photos









*******END OF REPORT*******