

Internal photos Raptor®45-Tx

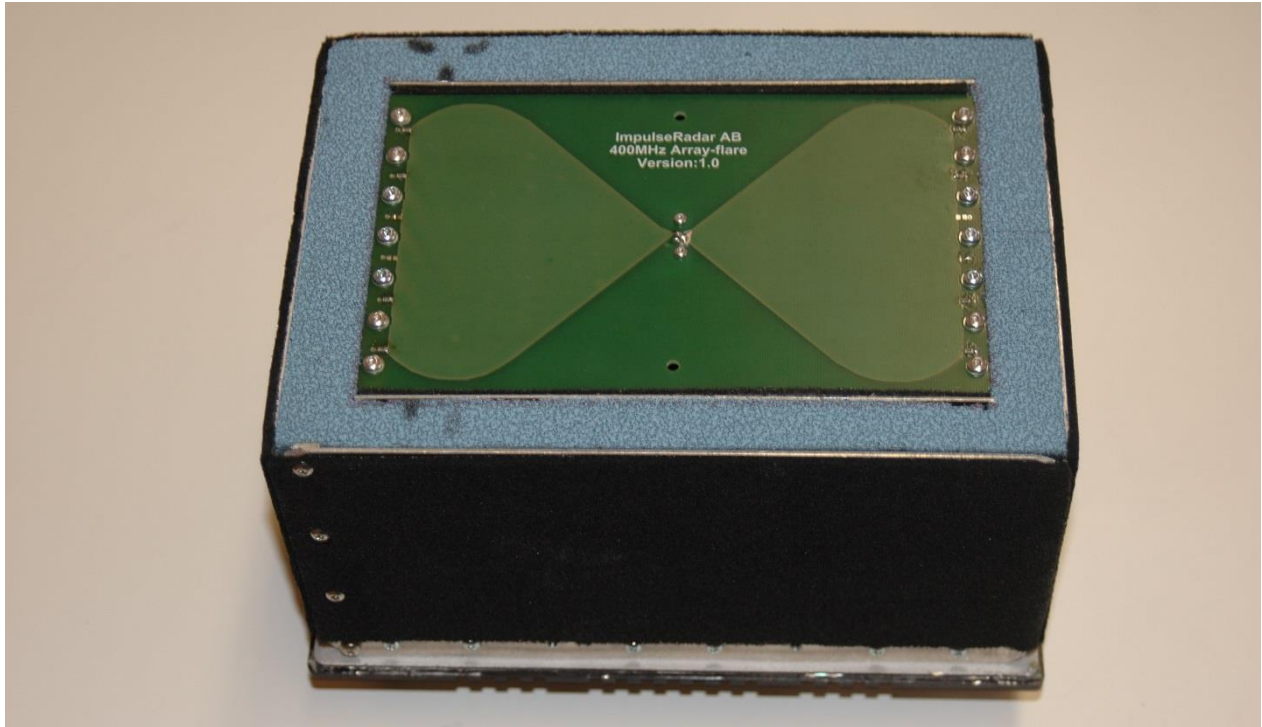


Figure 1, bottom view with plastic cover removed, showing antenna flares and absorbers. Absorbers glued on metal shield.

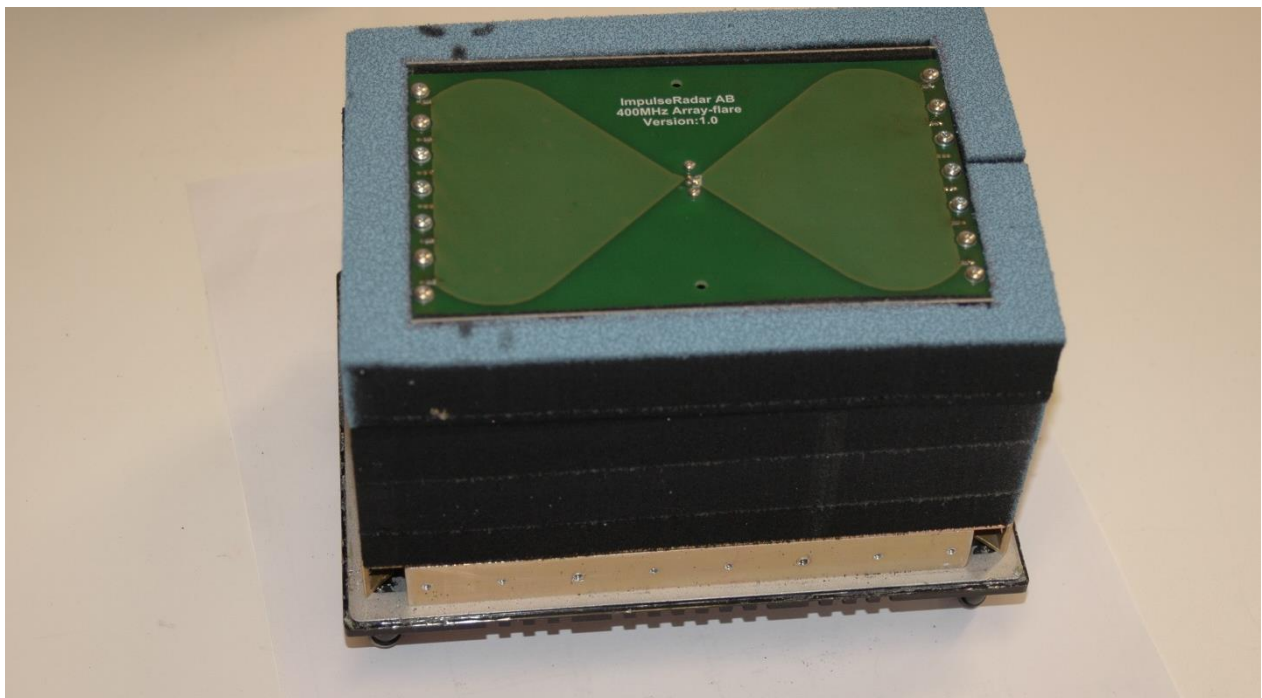


Figure 2, bottom view, metal shield removed, showing layers of absorbers.

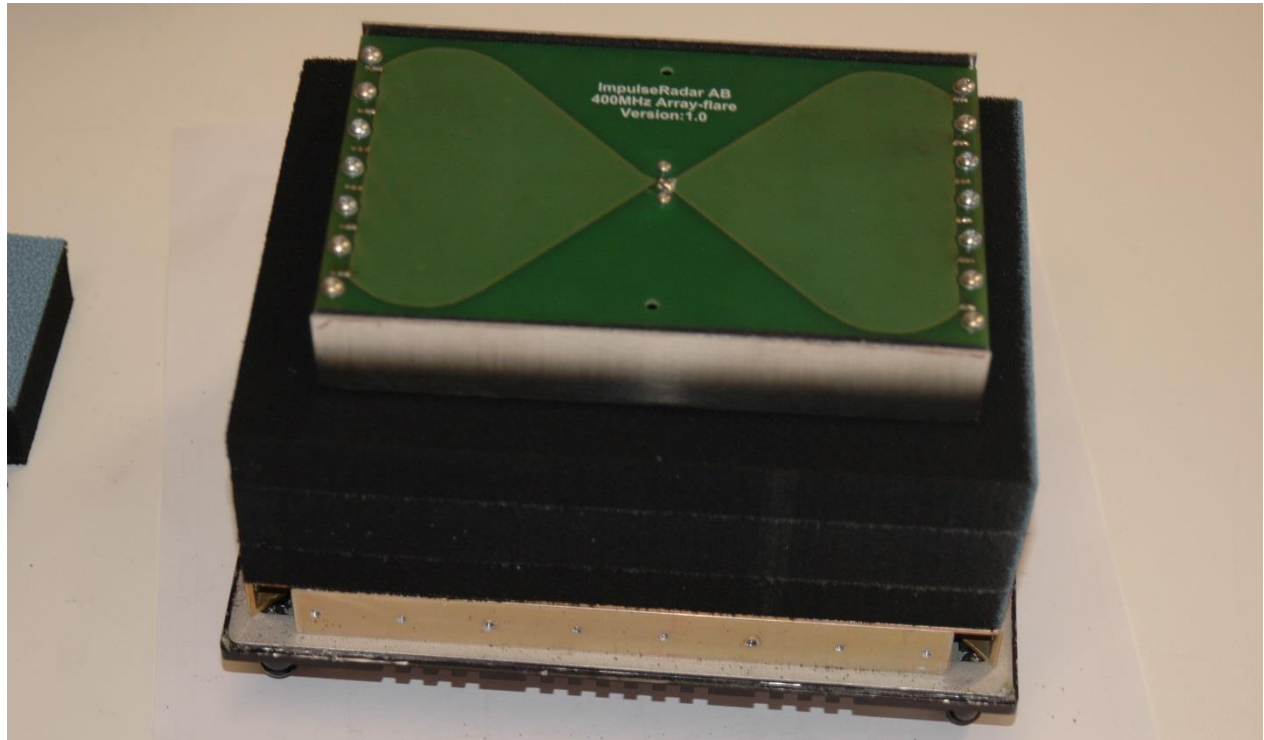


Figure 3, bottom view, first layer of absorbers removed, showing inner metal shield.

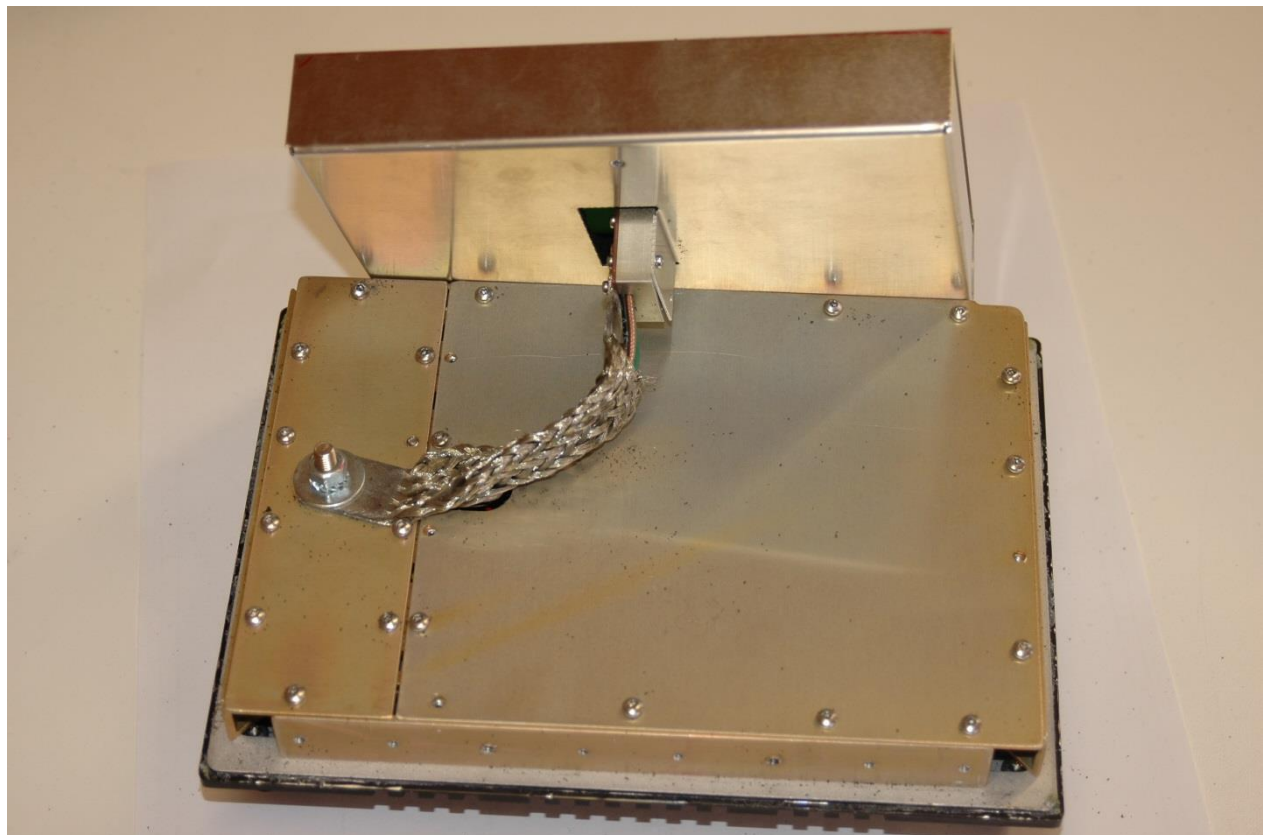


Figure 4, outer metal shield and all absorbers removed, showing metal cover on electronic compartment and shielded braid covering cables to step generator board residing inside metal casing.

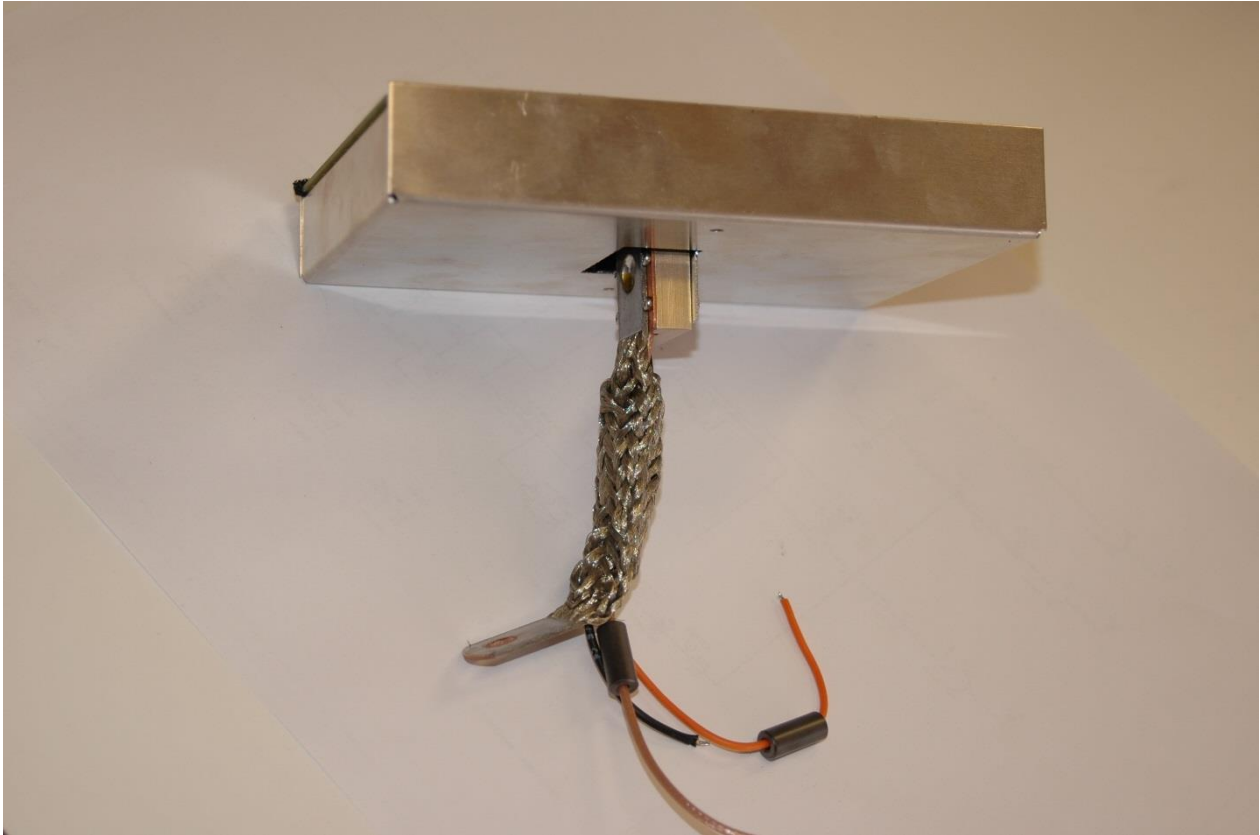


Figure 5, inner shield with step generator hosing mounted.

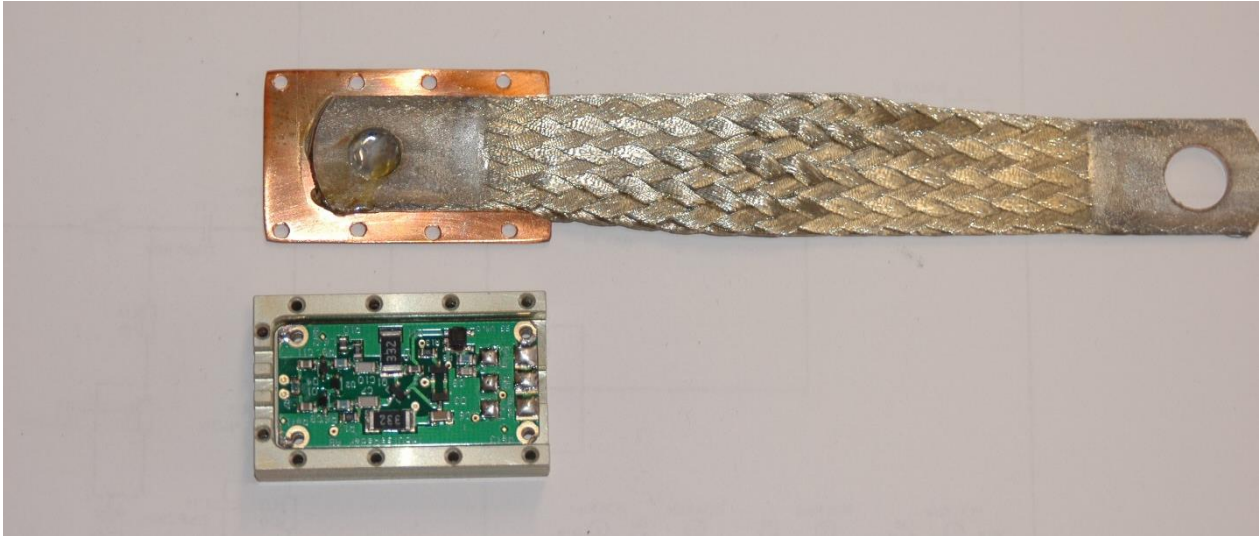


Figure 6, step generator board metal encapsulation shown open.

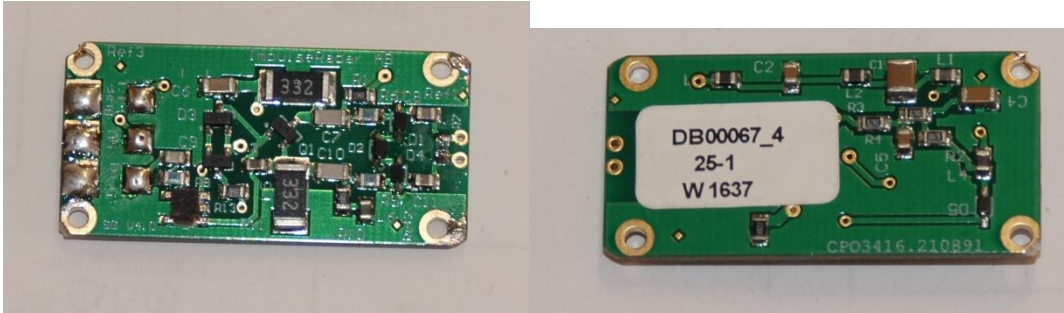


Figure 7, top and bottom side of step generator board

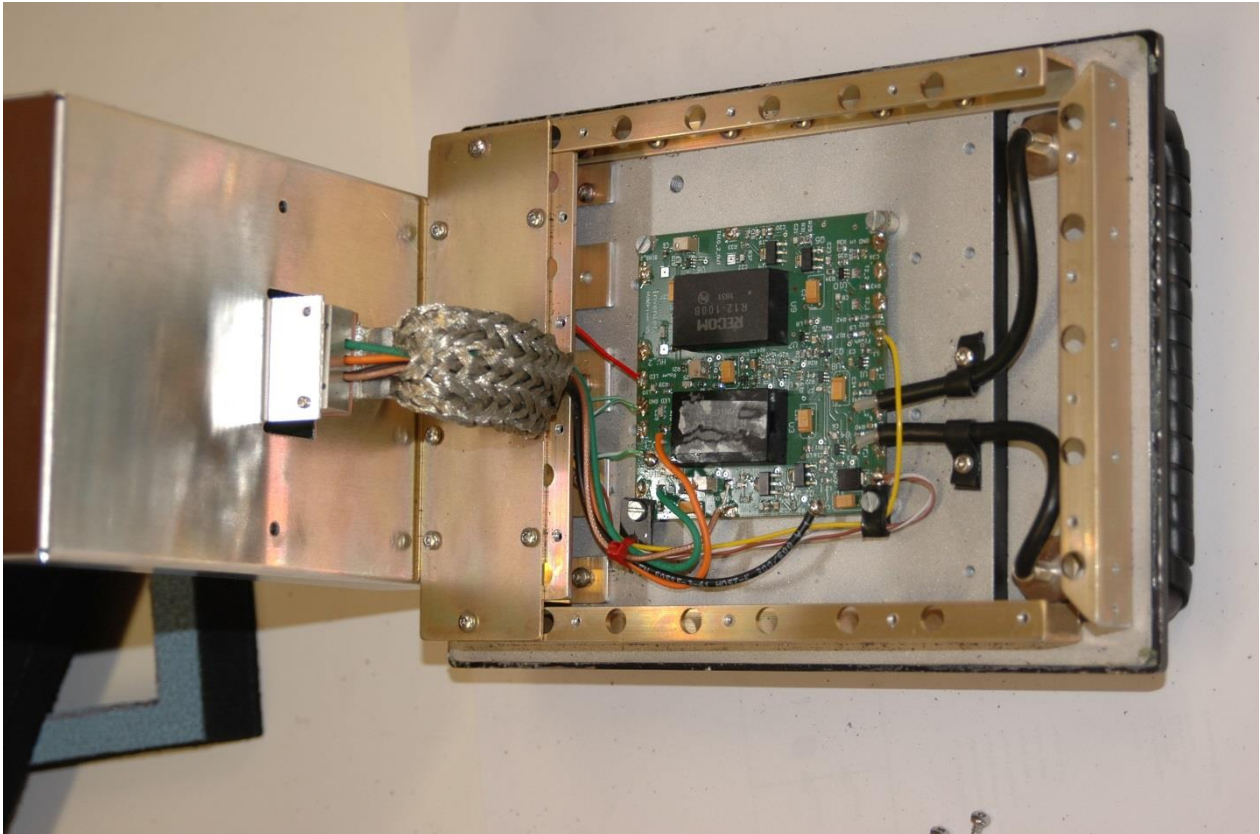


Figure 8, metal cover on electronic compartment removed, showing high voltage and driver board exposed, cables feeding the step generator board shown as well as input cabling for trig and power.

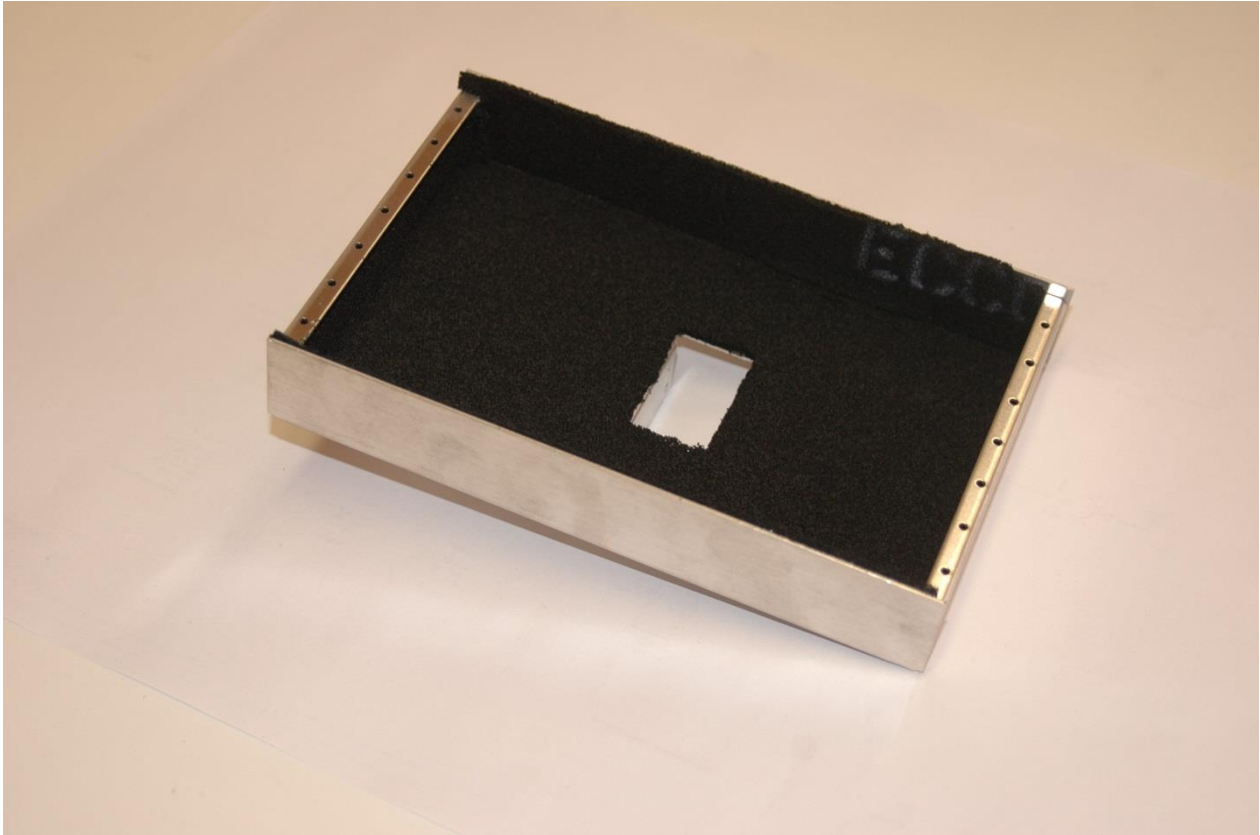


Figure 9, inner shield, on which antenna flares are mounted, inner surface covered with absorber.

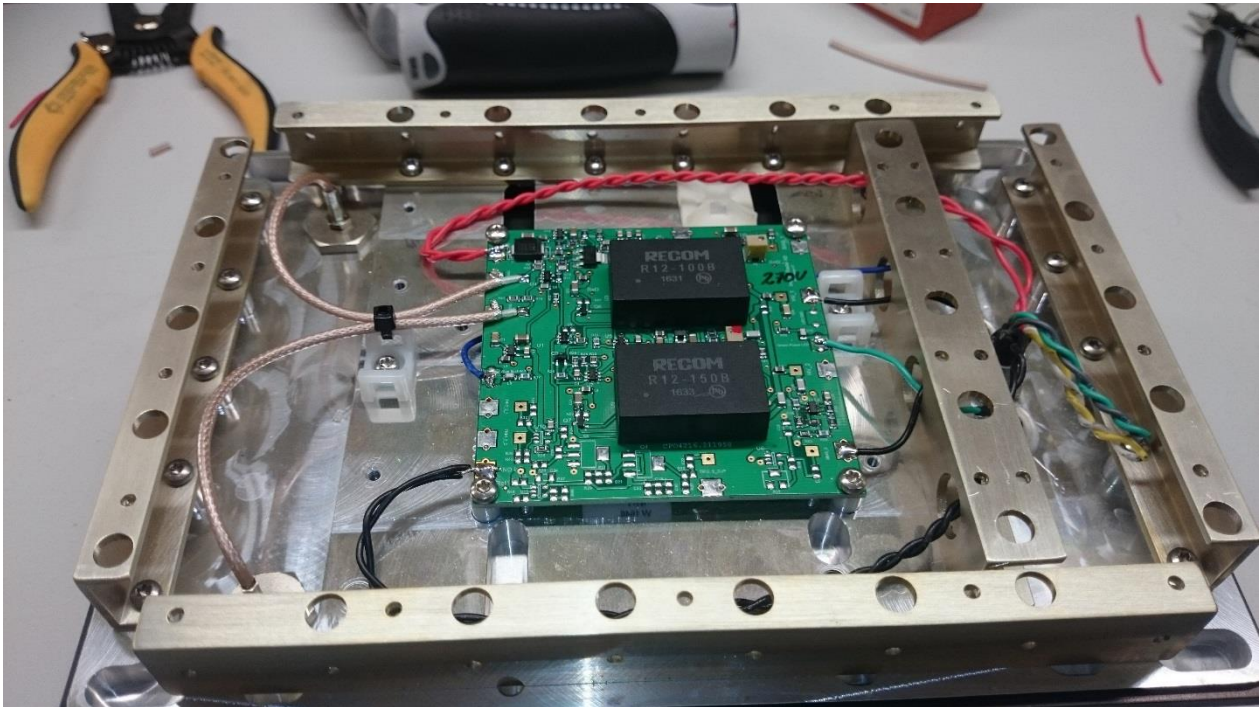


Figure 10, all metal covers on electronic compartment removed, showing all cabling except the ones feeding the step generator board.

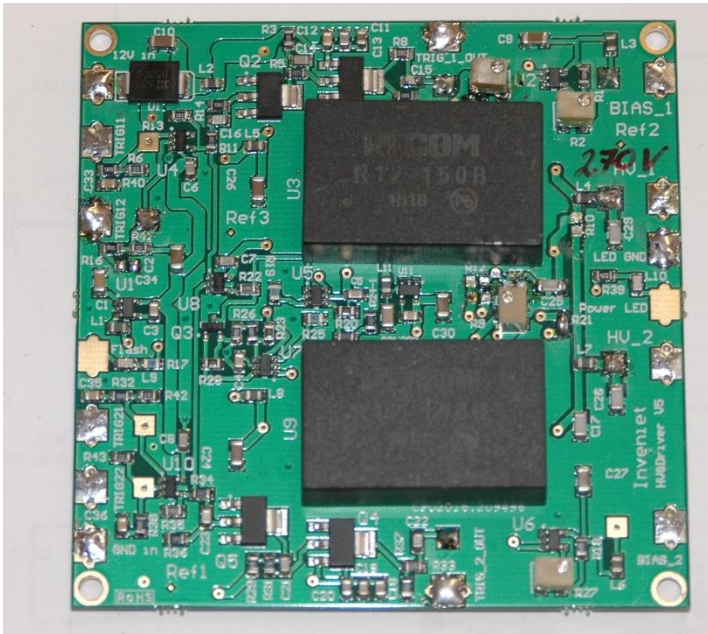


Figure 11, top side of high voltage and driver board

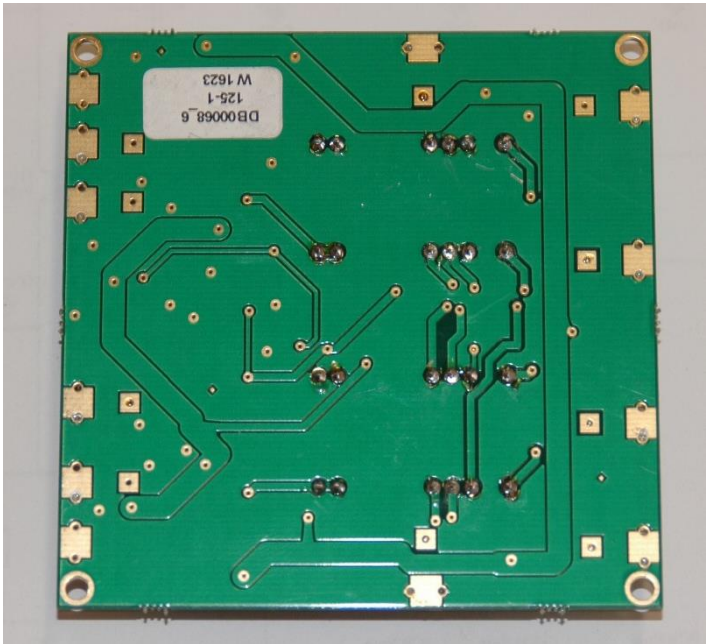


Figure 12, bottom side of high voltage and driver board

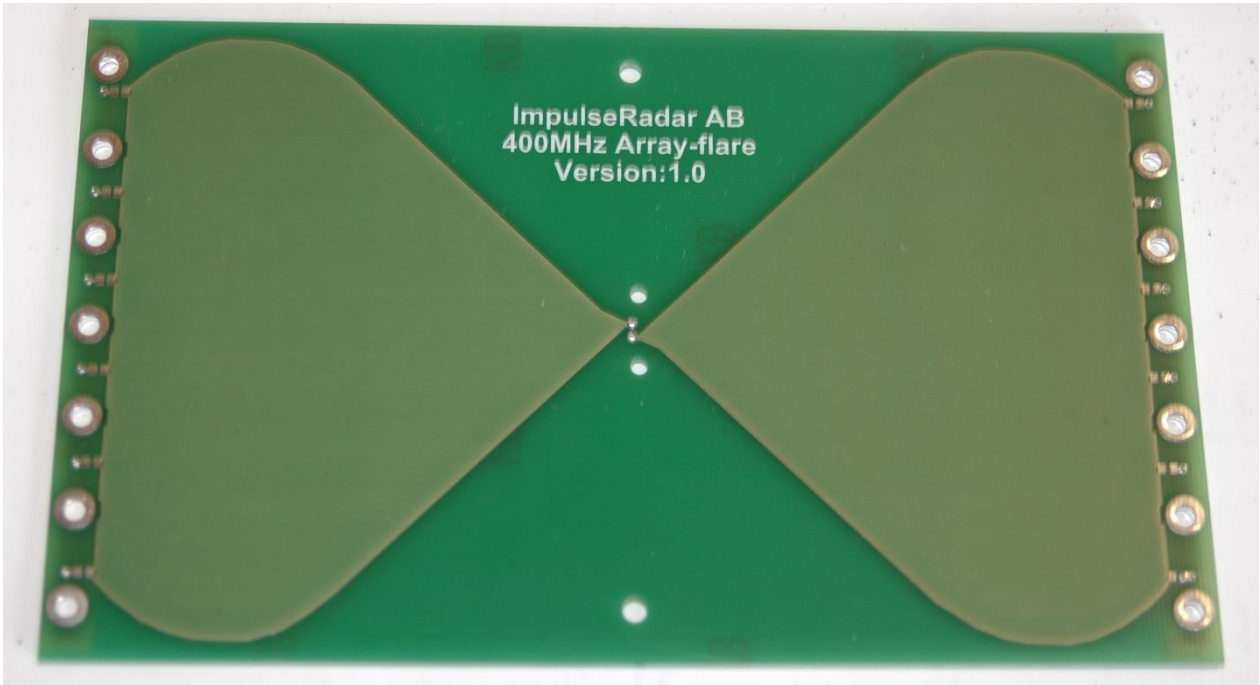


Figure 13, top side of antenna flare-board

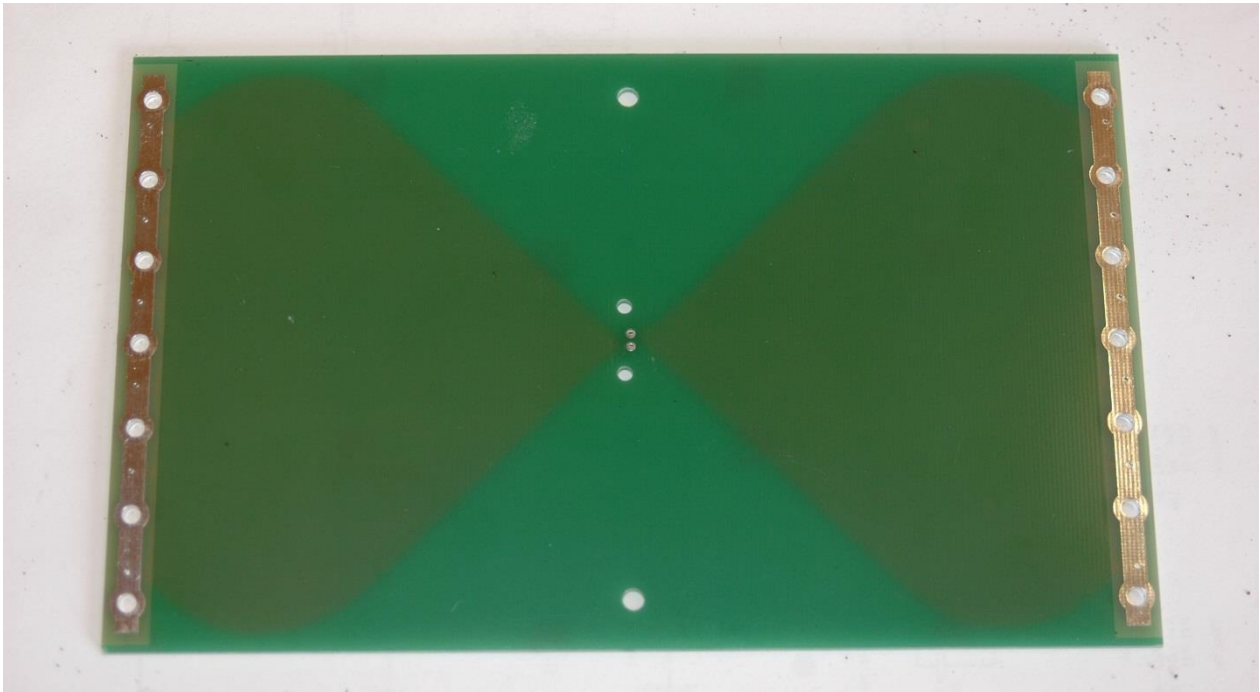


Figure 14, bottom side of antenna flare-board.