

Appendix B

Detailed Test Results

1. GSM
GSM850 for Head & Body
GSM1900 for Head & Body
2. WCDMA
WCDMA Band II for Head & Body
WCDMA Band IV for Head & Body
3. LTE
LTE Band 12 for Head & Body
LTE Band 25 for Head & Body
LTE Band 26 for Head & Body
LTE Band 41 for Head & Body
LTE Band 66 for Head & Body
LTE Band 71 for Head & Body
4. WIFI
WIFI 2.4G for Head & Body
5. BT
BT for Head & Body

Test Laboratory: SGS-SAR Lab

SC3218T GSM 850 GSM 190CH Left cheek cover open

DUT: SC3218T; Type: Smart phone; Serial: 358476180003964

Communication System: UID 0, GSM Only Communication System (0); Frequency: 836.6 MHz; Duty Cycle: 1:8.30042

Medium: HSL835; Medium parameters used: $f = 837$ MHz; $\sigma = 0.925$ S/m; $\epsilon_r = 42.38$; $\rho = 1000$ kg/m³

Phantom section: Left Section

DASY 5 Configuration:

- Probe: EX3DV4 - SN3789; ConvF(8.54, 8.54, 8.54); Calibrated: 2021-08-12
- Sensor-Surface: 2mm (Mechanical Surface Detection)
- Electronics: DAE3 Sn414; Calibrated: 2020-12-30
- Phantom: SAM6; Type: SAM; Serial: 1824
- DASY52 52.10.4(1527); SEMCAD X 14.6.14(7483)

Configuration/Head/Area Scan (7x16x1): Measurement grid: dx=15mm, dy=15mm
Maximum value of SAR (measured) = 0.176 W/kg

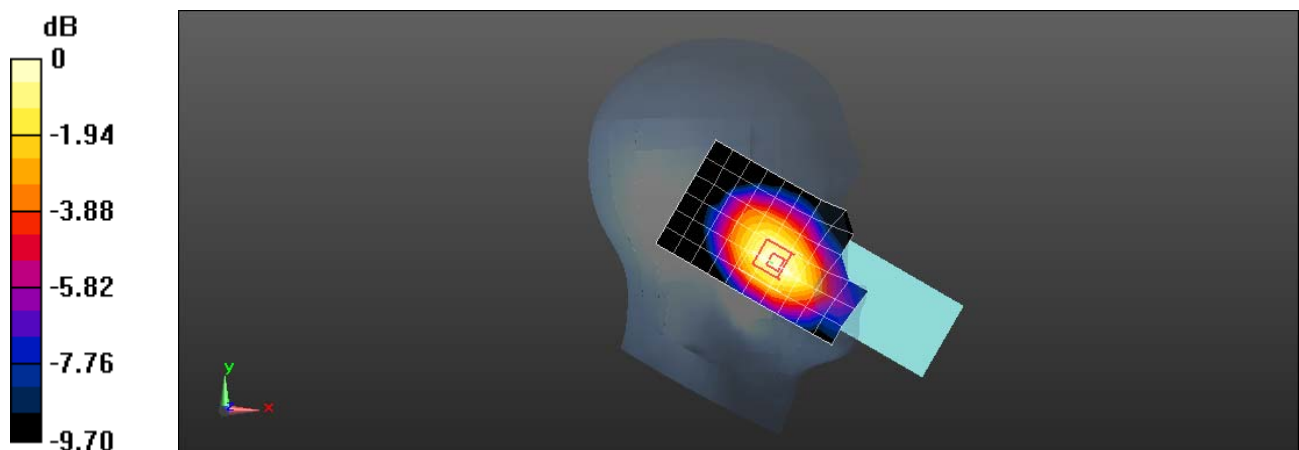
Configuration/Head/Zoom Scan (5x5x7)/Cube 0: Measurement grid: dx=8mm, dy=8mm, dz=5mm

Reference Value = 3.881 V/m; Power Drift = -0.15 dB

Peak SAR (extrapolated) = 0.201 W/kg

SAR(1 g) = 0.143 W/kg; SAR(10 g) = 0.102 W/kg

Maximum value of SAR (measured) = 0.179 W/kg



0 dB = 0.179 W/kg = -7.47 dBW/kg

Test Laboratory: SGS-SAR Lab

SC3218T GSM 850 GSM 190CH Back side 15mm cover open

DUT: SC3218T; Type: Smart phone; Serial: 358476180003964

Communication System: UID 0, GSM Only Communication System (0); Frequency: 836.6 MHz; Duty Cycle: 1:8.30042

Medium: HSL835; Medium parameters used: $f = 837$ MHz; $\sigma = 0.925$ S/m; $\epsilon_r = 42.38$; $\rho = 1000$ kg/m³

Phantom section: Flat Section

DASY 5 Configuration:

- Probe: EX3DV4 - SN3789; ConvF(8.54, 8.54, 8.54); Calibrated: 2021-08-12
- Sensor-Surface: 2mm (Mechanical Surface Detection)
- Electronics: DAE3 Sn414; Calibrated: 2020-12-30
- Phantom: SAM6; Type: SAM; Serial: 1824
- DASY52 52.10.4(1527); SEMCAD X 14.6.14(7483)

Configuration/Body/Area Scan (7x16x1): Measurement grid: dx=15mm, dy=15mm
Maximum value of SAR (measured) = 0.425 W/kg

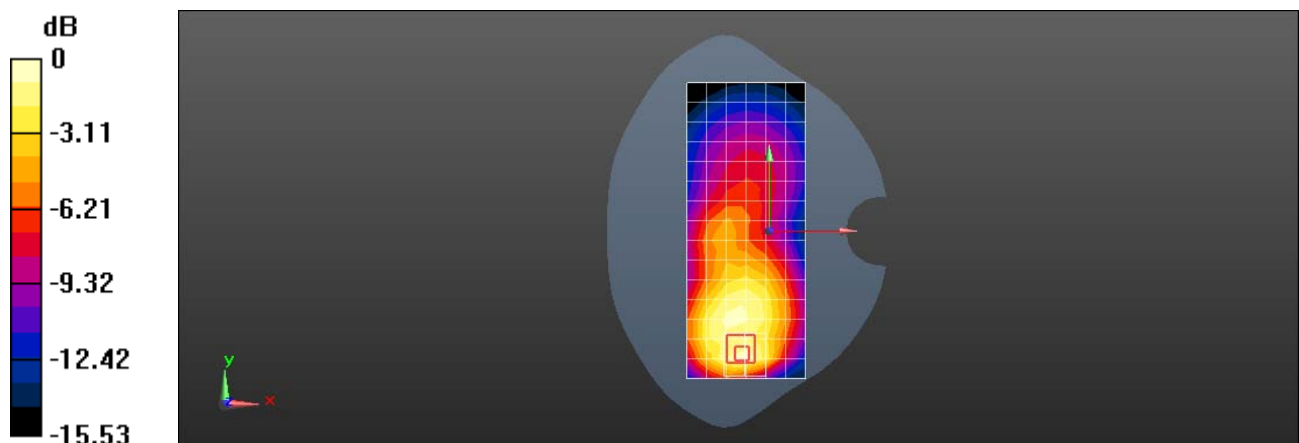
Configuration/Body/Zoom Scan (5x5x7)/Cube 0: Measurement grid: dx=8mm, dy=8mm, dz=5mm

Reference Value = 10.46 V/m; Power Drift = 0.01 dB

Peak SAR (extrapolated) = 0.560 W/kg

SAR(1 g) = 0.310 W/kg; SAR(10 g) = 0.191 W/kg

Maximum value of SAR (measured) = 0.465 W/kg



0 dB = 0.465 W/kg = -3.33 dBW/kg

Test Laboratory: SGS-SAR Lab

SC3218T GSM 850 GPRS 2TS 190CH Back side 10mm cover open

DUT: SC3218T; Type: Smart phone; Serial: 358476180003964

Communication System: UID 0, GPRS/EGPRS Mode(2up) Communication System (0); Frequency: 836.6 MHz; Duty Cycle: 1:4.14954

Medium: HSL835; Medium parameters used: $f = 837$ MHz; $\sigma = 0.925$ S/m; $\epsilon_r = 42.38$; $\rho = 1000$ kg/m³

Phantom section: Flat Section

DASY 5 Configuration:

- Probe: EX3DV4 - SN3789; ConvF(8.54, 8.54, 8.54); Calibrated: 2021-08-12
- Sensor-Surface: 2mm (Mechanical Surface Detection)
- Electronics: DAE3 Sn414; Calibrated: 2020-12-30
- Phantom: SAM6; Type: SAM; Serial: 1824
- DASY52 52.10.4(1527); SEMCAD X 14.6.14(7483)

Configuration/Body/Area Scan (7x16x1): Measurement grid: dx=15mm, dy=15mm
Maximum value of SAR (measured) = 1.33 W/kg

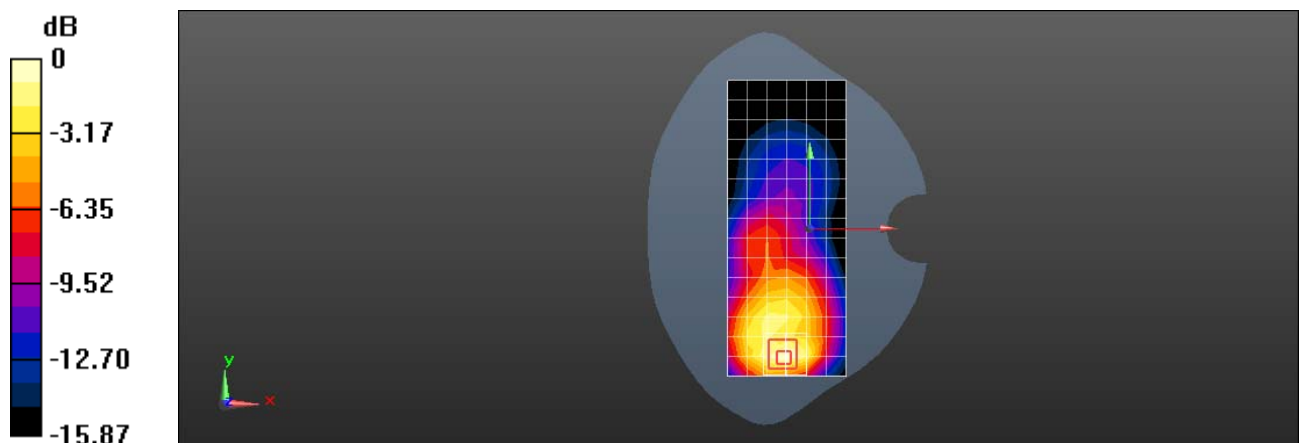
Configuration/Body/Zoom Scan (5x5x7)/Cube 0: Measurement grid: dx=8mm, dy=8mm, dz=5mm

Reference Value = 13.25 V/m; Power Drift = -0.18 dB

Peak SAR (extrapolated) = 1.62 W/kg

SAR(1 g) = 0.828 W/kg; SAR(10 g) = 0.464 W/kg

Maximum value of SAR (measured) = 1.25 W/kg



0 dB = 1.25 W/kg = 0.97 dBW/kg

Test Laboratory: SGS-SAR Lab

SC3218T GSM 850 GSM 190CH Back side 15mm cover close

DUT: SC3218T; Type: Smart phone; Serial: 358476180003964

Communication System: UID 0, GSM Only Communication System (0); Frequency: 836.6 MHz; Duty Cycle: 1:8.30042

Medium: HSL835; Medium parameters used: $f = 837$ MHz; $\sigma = 0.925$ S/m; $\epsilon_r = 42.38$; $\rho = 1000$ kg/m³

Phantom section: Flat Section

DASY 5 Configuration:

- Probe: EX3DV4 - SN3789; ConvF(8.54, 8.54, 8.54); Calibrated: 2021-08-12
- Sensor-Surface: 2mm (Mechanical Surface Detection)
- Electronics: DAE3 Sn414; Calibrated: 2020-12-30
- Phantom: SAM6; Type: SAM; Serial: 1824
- DASY52 52.10.4(1527); SEMCAD X 14.6.14(7483)

Configuration/Body/Area Scan (7x10x1): Measurement grid: dx=15mm, dy=15mm
Maximum value of SAR (measured) = 0.651 W/kg

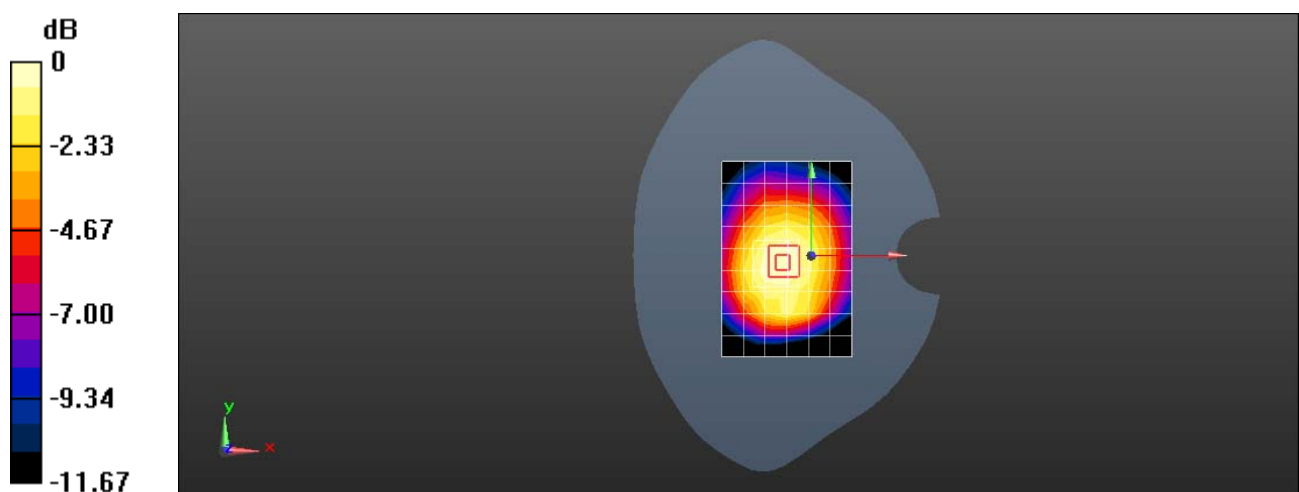
Configuration/Body/Zoom Scan (5x5x7)/Cube 0: Measurement grid: dx=8mm, dy=8mm, dz=5mm

Reference Value = 23.81 V/m; Power Drift = 0.05 dB

Peak SAR (extrapolated) = 0.771 W/kg

SAR(1 g) = 0.521 W/kg; SAR(10 g) = 0.365 W/kg

Maximum value of SAR (measured) = 0.672 W/kg



0 dB = 0.672 W/kg = -1.73 dBW/kg

Test Laboratory: SGS-SAR Lab

SC3218T GSM 850 GPRS 2TS 190CH Back side 10mm cover close

DUT: SC3218T; Type: Smart phone; Serial: 358476180003964

Communication System: UID 0, GPRS/EGPRS Mode(2up) Communication System (0); Frequency: 836.6 MHz; Duty Cycle: 1:4.14954

Medium: HSL835; Medium parameters used: $f = 837$ MHz; $\sigma = 0.925$ S/m; $\epsilon_r = 42.38$; $\rho = 1000$ kg/m³

Phantom section: Flat Section

DASY 5 Configuration:

- Probe: EX3DV4 - SN3789; ConvF(8.54, 8.54, 8.54); Calibrated: 2021-08-12
- Sensor-Surface: 2mm (Mechanical Surface Detection)
- Electronics: DAE3 Sn414; Calibrated: 2020-12-30
- Phantom: SAM6; Type: SAM; Serial: 1824
- DASY52 52.10.4(1527); SEMCAD X 14.6.14(7483)

Configuration/Body/Area Scan (7x10x1): Measurement grid: dx=15mm, dy=15mm
Maximum value of SAR (measured) = 1.20 W/kg

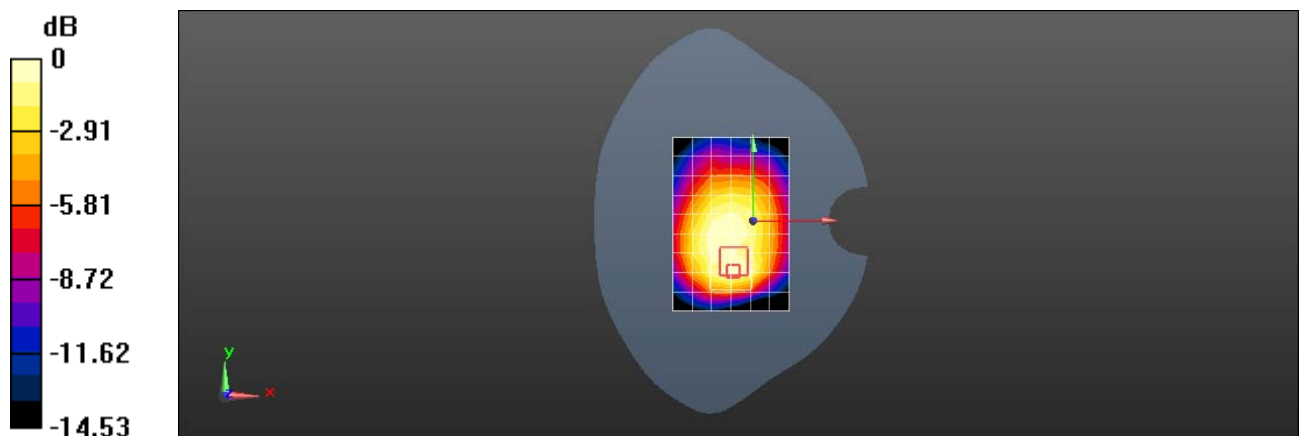
Configuration/Body/Zoom Scan (5x5x7)/Cube 0: Measurement grid: dx=8mm, dy=8mm, dz=5mm

Reference Value = 29.97 V/m; Power Drift = -0.08 dB

Peak SAR (extrapolated) = 1.48 W/kg

SAR(1 g) = 0.789 W/kg; SAR(10 g) = 0.511 W/kg

Maximum value of SAR (measured) = 1.11 W/kg



0 dB = 1.11 W/kg = 0.45 dBW/kg

Test Laboratory: SGS-SAR Lab

SC3218T GSM 1900 GSM 661CH Right cheek Cover Open

DUT: SC3218T; Type: Smart phone; Serial: 358476180003964

Communication System: UID 0, GSM Only Communication System (0); Frequency: 1880 MHz; Duty Cycle: 1:8.30042

Medium: HSL1900; Medium parameters used: $f = 1880$ MHz; $\sigma = 1.399$ S/m; $\epsilon_r = 38.82$; $\rho = 1000$ kg/m³

Phantom section: Right Section

DASY 5 Configuration:

- Probe: EX3DV4 - SN7620; ConvF(8.67, 8.67, 8.67); Calibrated: 2021-08-24
- Sensor-Surface: 1.4mm (Mechanical Surface Detection)
- Electronics: DAE4 Sn1327; Calibrated: 2021-11-05
- Phantom: SAM5; Type: SAM; Serial: 1481
- DASY52 52.10.4(1527); SEMCAD X 14.6.14(7483)

Configuration/Head/Area Scan (7x16x1): Measurement grid: dx=15mm, dy=15mm
Maximum value of SAR (measured) = 0.141 W/kg

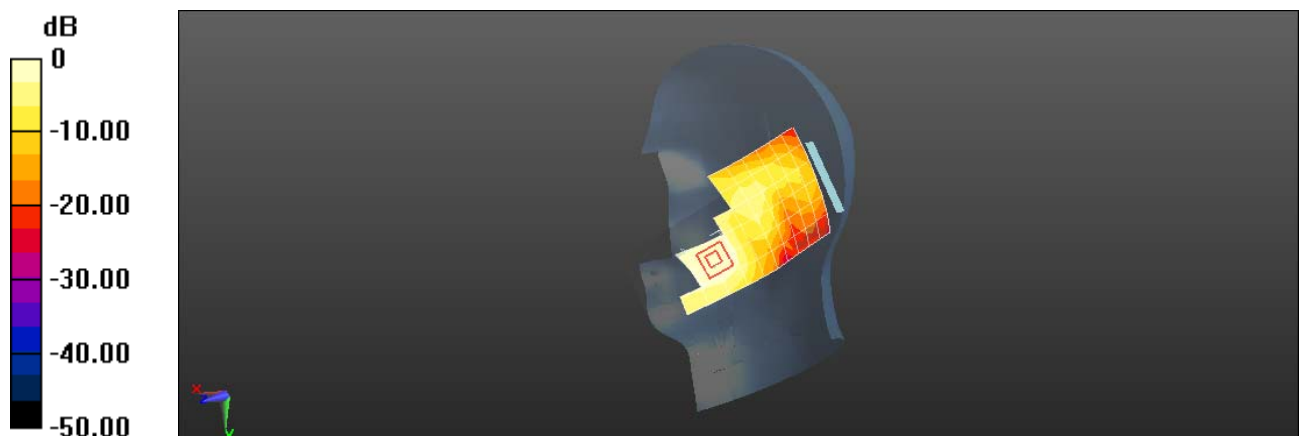
Configuration/Head/Zoom Scan (5x5x7)/Cube 0: Measurement grid: dx=8mm, dy=8mm, dz=5mm

Reference Value = 2.638 V/m; Power Drift = 0.05 dB

Peak SAR (extrapolated) = 0.162 W/kg

SAR(1 g) = 0.101 W/kg; SAR(10 g) = 0.065 W/kg

Maximum value of SAR (measured) = 0.137 W/kg



0 dB = 0.137 W/kg = -8.63 dBW/kg

Test Laboratory: SGS-SAR Lab

SC3218T GSM 1900 GSM 661CH Front side 15mm Cover Open

DUT: SC3218T; Type: Smart phone; Serial: 358476180003964

Communication System: UID 0, GSM Only Communication System (0); Frequency: 1880 MHz; Duty Cycle: 1:8.30042

Medium: HSL1900; Medium parameters used: $f = 1880$ MHz; $\sigma = 1.399$ S/m; $\epsilon_r = 38.82$; $\rho = 1000$ kg/m³

Phantom section: Flat Section

DASY 5 Configuration:

- Probe: EX3DV4 - SN7620; ConvF(8.67, 8.67, 8.67); Calibrated: 2021-08-24
- Sensor-Surface: 1.4mm (Mechanical Surface Detection)
- Electronics: DAE4 Sn1327; Calibrated: 2021-11-05
- Phantom: SAM5; Type: SAM; Serial: 1481
- DASY52 52.10.4(1527); SEMCAD X 14.6.14(7483)

Configuration/Body/Area Scan (7x16x1): Measurement grid: dx=15mm, dy=15mm
Maximum value of SAR (measured) = 0.374 W/kg

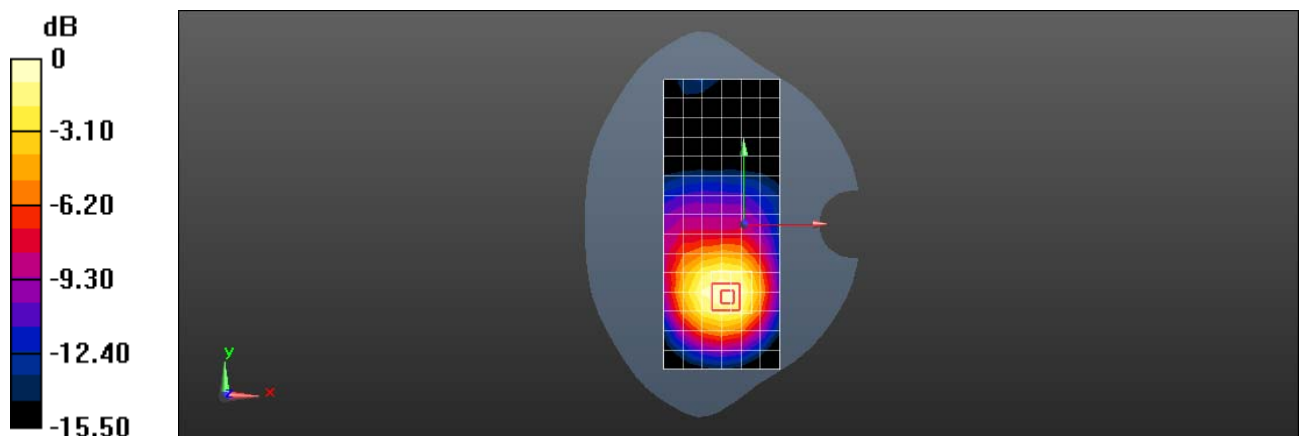
Configuration/Body/Zoom Scan (5x5x7)/Cube 0: Measurement grid: dx=8mm, dy=8mm, dz=5mm

Reference Value = 5.280 V/m; Power Drift = 0.03 dB

Peak SAR (extrapolated) = 0.445 W/kg

SAR(1 g) = 0.265 W/kg; SAR(10 g) = 0.161 W/kg

Maximum value of SAR (measured) = 0.370 W/kg



0 dB = 0.370 W/kg = -4.32 dBW/kg

Test Laboratory: SGS-SAR Lab

SC3218T GPRS 1900 GPRS 3TS 661CH Front side 10mm Cover Open

DUT: SC3218T; Type: Smart phone; Serial: 358476180003964

Communication System: UID 0, GPRS/EGPRS Mode(3up) Communication System (0); Frequency: 1880 MHz; Duty Cycle: 1:2.77013

Medium: HSL1900; Medium parameters used: $f = 1880$ MHz; $\sigma = 1.399$ S/m; $\epsilon_r = 38.82$; $\rho = 1000$ kg/m³

Phantom section: Flat Section

DASY 5 Configuration:

- Probe: EX3DV4 - SN7620; ConvF(8.67, 8.67, 8.67); Calibrated: 2021-08-24
- Sensor-Surface: 1.4mm (Mechanical Surface Detection)
- Electronics: DAE4 Sn1327; Calibrated: 2021-11-05
- Phantom: SAM5; Type: SAM; Serial: 1481
- DASY52 52.10.4(1527); SEMCAD X 14.6.14(7483)

Configuration/Body/Area Scan (7x16x1): Measurement grid: dx=15mm, dy=15mm
Maximum value of SAR (measured) = 0.569 W/kg

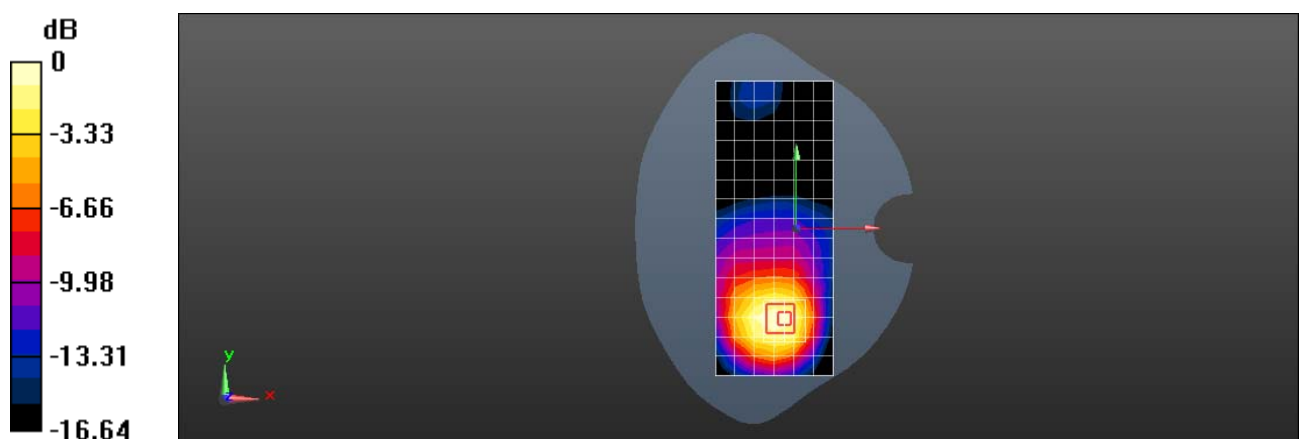
Configuration/Body/Zoom Scan (5x5x7)/Cube 0: Measurement grid: dx=8mm, dy=8mm, dz=5mm

Reference Value = 5.122 V/m; Power Drift = 0.12 dB

Peak SAR (extrapolated) = 0.682 W/kg

SAR(1 g) = 0.402 W/kg; SAR(10 g) = 0.238 W/kg

Maximum value of SAR (measured) = 0.579 W/kg



0 dB = 0.579 W/kg = -2.37 dBW/kg

Test Laboratory: SGS-SAR Lab

SC3218T GSM 1900 GSM 661CH Back side 15mm Cover Close

DUT: SC3218T; Type: Smart phone; Serial: 358476180003964

Communication System: UID 0, GSM Only Communication System (0); Frequency: 1880 MHz; Duty Cycle: 1:8.30042

Medium: HSL1900; Medium parameters used: $f = 1880$ MHz; $\sigma = 1.399$ S/m; $\epsilon_r = 38.82$; $\rho = 1000$ kg/m³

Phantom section: Flat Section

DASY 5 Configuration:

- Probe: EX3DV4 - SN7620; ConvF(8.67, 8.67, 8.67); Calibrated: 2021-08-24
- Sensor-Surface: 1.4mm (Mechanical Surface Detection)
- Electronics: DAE4 Sn1327; Calibrated: 2021-11-05
- Phantom: SAM5; Type: SAM; Serial: 1481
- DASY52 52.10.4(1527); SEMCAD X 14.6.14(7483)

Configuration/Body/Area Scan (7x11x1): Measurement grid: dx=15mm, dy=15mm
Maximum value of SAR (measured) = 0.600 W/kg

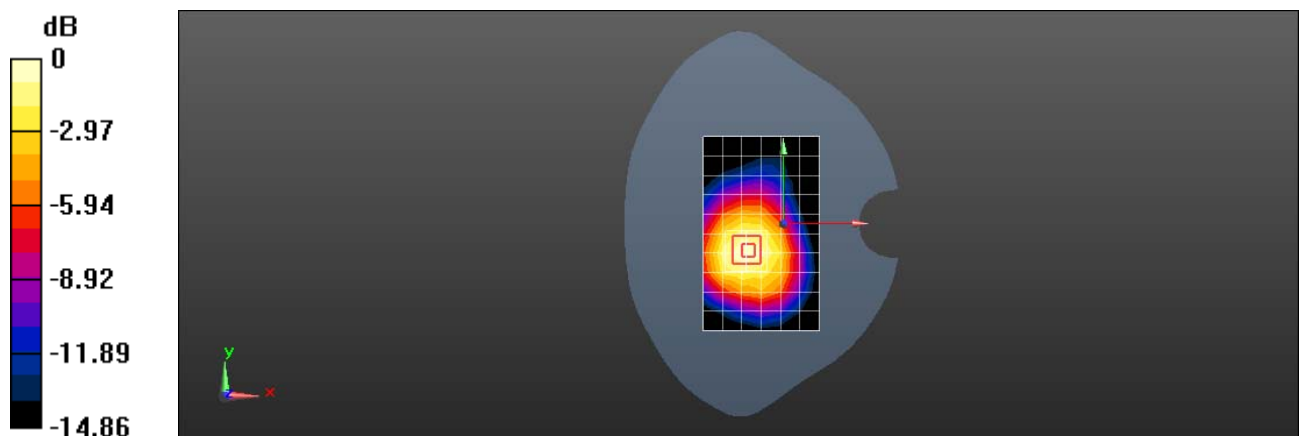
Configuration/Body/Zoom Scan (5x5x7)/Cube 0: Measurement grid: dx=8mm, dy=8mm, dz=5mm

Reference Value = 13.34 V/m; Power Drift = 0.02 dB

Peak SAR (extrapolated) = 0.712 W/kg

SAR(1 g) = 0.442 W/kg; SAR(10 g) = 0.270 W/kg

Maximum value of SAR (measured) = 0.617 W/kg



0 dB = 0.617 W/kg = -2.10 dBW/kg

Test Laboratory: SGS-SAR Lab

SC3218T GPRS 1900 GPRS 3TS 512CH Back side 10mm Cover Close

DUT: SC3218T; Type: Smart phone; Serial: 358476180003964

Communication System: UID 0, GPRS/EGPRS Mode(3up) Communication System (0); Frequency: 1850.2 MHz; Duty Cycle: 1:2.77013

Medium: HSL1900; Medium parameters used (interpolated): $f = 1850.2$ MHz; $\sigma = 1.38$ S/m; $\epsilon_r = 38.881$; $\rho = 1000$ kg/m³
Phantom section: Flat Section

DASY 5 Configuration:

- Probe: EX3DV4 - SN7620; ConvF(8.67, 8.67, 8.67); Calibrated: 2021-08-24
- Sensor-Surface: 1.4mm (Mechanical Surface Detection)
- Electronics: DAE4 Sn1327; Calibrated: 2021-11-05
- Phantom: SAM5; Type: SAM; Serial: 1481
- DASY52 52.10.4(1527); SEMCAD X 14.6.14(7483)

Configuration/Body/Area Scan (7x11x1): Measurement grid: dx=15mm, dy=15mm
Maximum value of SAR (measured) = 1.00 W/kg

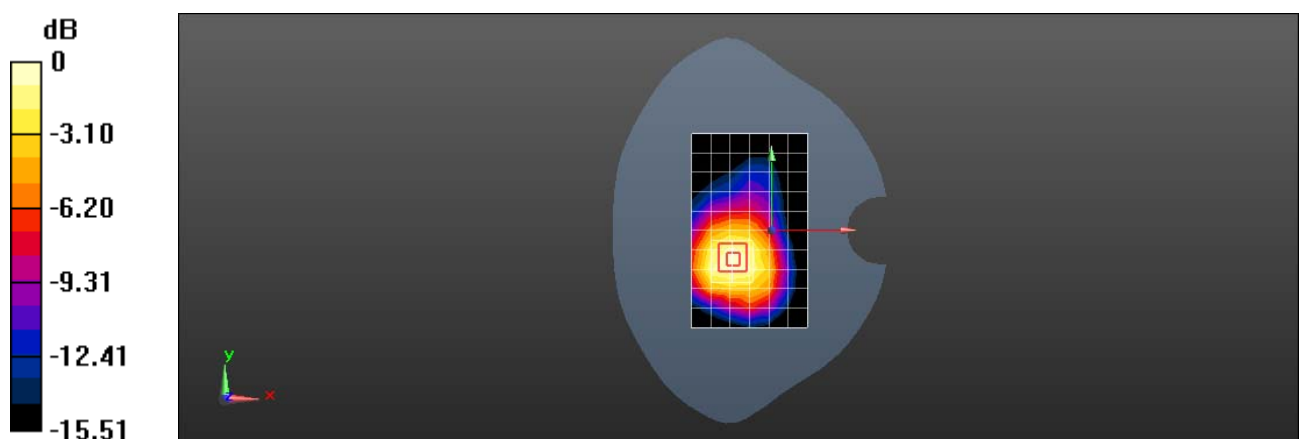
Configuration/Body/Zoom Scan (5x5x7)/Cube 0: Measurement grid: dx=8mm, dy=8mm, dz=5mm

Reference Value = 15.53 V/m; Power Drift = 0.09 dB

Peak SAR (extrapolated) = 1.27 W/kg

SAR(1 g) = 0.790 W/kg; SAR(10 g) = 0.477 W/kg

Maximum value of SAR (measured) = 1.10 W/kg



0 dB = 1.10 W/kg = 0.41 dBW/kg

Test Laboratory: SGS-SAR Lab

SC3218T WCDMA Band II 9400CH Right tilted Cover Open

DUT: SC3218T; Type: Smart phone; Serial: 358476180003964

Communication System: UID 0, WCDMA (0); Frequency: 1880 MHz; Duty Cycle: 1:1

Medium: HSL1900; Medium parameters used: $f = 1880$ MHz; $\sigma = 1.399$ S/m; $\epsilon_r = 38.82$; $\rho = 1000$ kg/m³

Phantom section: Right Section

DASY 5 Configuration:

- Probe: EX3DV4 - SN7620; ConvF(8.67, 8.67, 8.67); Calibrated: 2021-08-24
- Sensor-Surface: 1.4mm (Mechanical Surface Detection)
- Electronics: DAE4 Sn1327; Calibrated: 2021-11-05
- Phantom: SAM5; Type: SAM; Serial: 1481
- DASY52 52.10.4(1527); SEMCAD X 14.6.14(7483)

Configuration/Head/Area Scan (7x17x1): Measurement grid: dx=15mm, dy=15mm

Maximum value of SAR (measured) = 0.123 W/kg

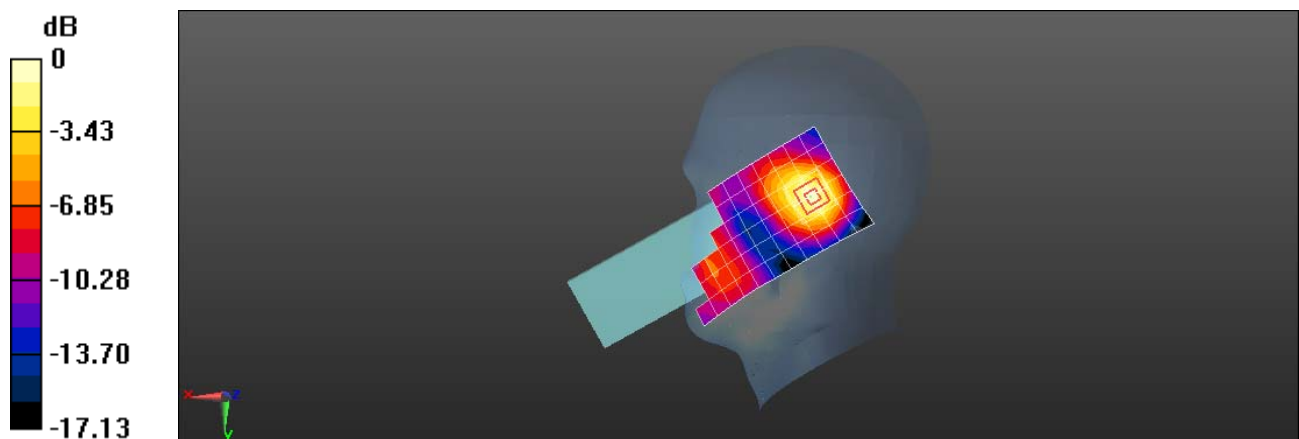
Configuration/Head/Zoom Scan (5x5x7)/Cube 0: Measurement grid: dx=8mm, dy=8mm, dz=5mm

Reference Value = 8.151 V/m; Power Drift = 0.02 dB

Peak SAR (extrapolated) = 0.145 W/kg

SAR(1 g) = 0.090 W/kg; SAR(10 g) = 0.053 W/kg

Maximum value of SAR (measured) = 0.125 W/kg



0 dB = 0.125 W/kg = -9.03 dBW/kg

Test Laboratory: SGS-SAR Lab

SC3218T WCDMA Band II 9400CH Back side 15mm Cover Open

DUT: SC3218T; Type: Smart phone; Serial: 358476180003964

Communication System: UID 0, WCDMA (0); Frequency: 1880 MHz; Duty Cycle: 1:1

Medium: HSL1900; Medium parameters used: $f = 1880$ MHz; $\sigma = 1.399$ S/m; $\epsilon_r = 38.82$; $\rho = 1000$ kg/m³

Phantom section: Flat Section

DASY 5 Configuration:

- Probe: EX3DV4 - SN7620; ConvF(8.67, 8.67, 8.67); Calibrated: 2021-08-24
- Sensor-Surface: 1.4mm (Mechanical Surface Detection)
- Electronics: DAE4 Sn1327; Calibrated: 2021-11-05
- Phantom: SAM5; Type: SAM; Serial: 1481
- DASY52 52.10.4(1527); SEMCAD X 14.6.14(7483)

Configuration/Body/Area Scan (7x16x1): Measurement grid: dx=15mm, dy=15mm
Maximum value of SAR (measured) = 0.658 W/kg

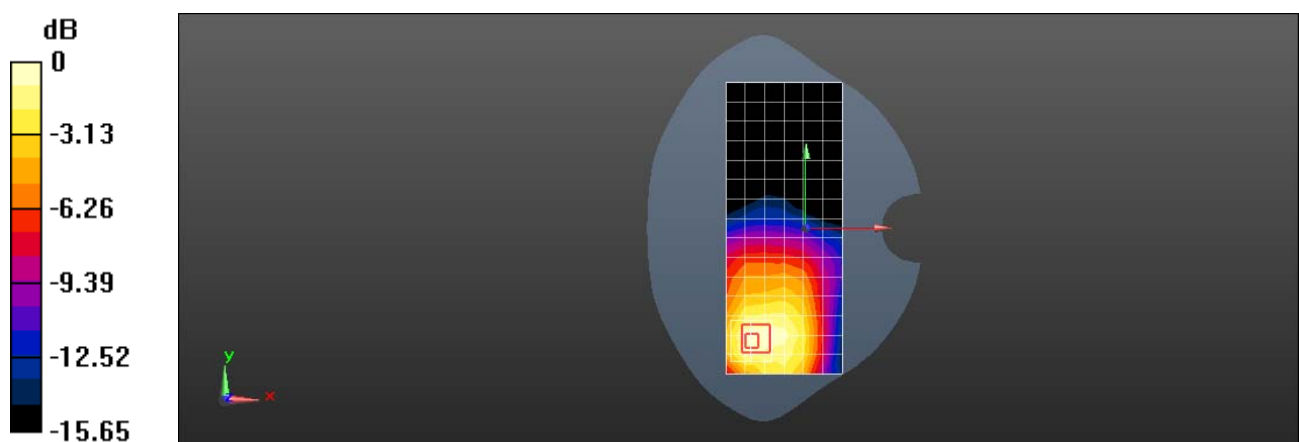
Configuration/Body/Zoom Scan (5x5x7)/Cube 0: Measurement grid: dx=8mm, dy=8mm, dz=5mm

Reference Value = 5.737 V/m; Power Drift = 0.02 dB

Peak SAR (extrapolated) = 0.833 W/kg

SAR(1 g) = 0.502 W/kg; SAR(10 g) = 0.304 W/kg

Maximum value of SAR (measured) = 0.713 W/kg



0 dB = 0.713 W/kg = -1.47 dBW/kg

Test Laboratory: SGS-SAR Lab

SC3218T WCDMA Band II 9262CH Front side 10mm Cover Open

DUT: SC3218T; Type: Smart phone; Serial: 358476180003964

Communication System: UID 0, WCDMA (0); Frequency: 1852.4 MHz; Duty Cycle: 1:1

Medium: HSL1900; Medium parameters used: $f = 1852.4$ MHz; $\sigma = 1.379$ S/m; $\epsilon_r = 38.939$; $\rho = 1000$ kg/m³

Phantom section: Flat Section

DASY 5 Configuration:

- Probe: EX3DV4 - SN7620; ConvF(8.67, 8.67, 8.67); Calibrated: 2021-08-24
- Sensor-Surface: 1.4mm (Mechanical Surface Detection)
- Electronics: DAE4 Sn1327; Calibrated: 2021-11-05
- Phantom: SAM5; Type: SAM; Serial: 1481
- DASY52 52.10.4(1527); SEMCAD X 14.6.14(7483)

Configuration/Body/Area Scan (7x16x1): Measurement grid: dx=15mm, dy=15mm

Maximum value of SAR (measured) = 1.29 W/kg

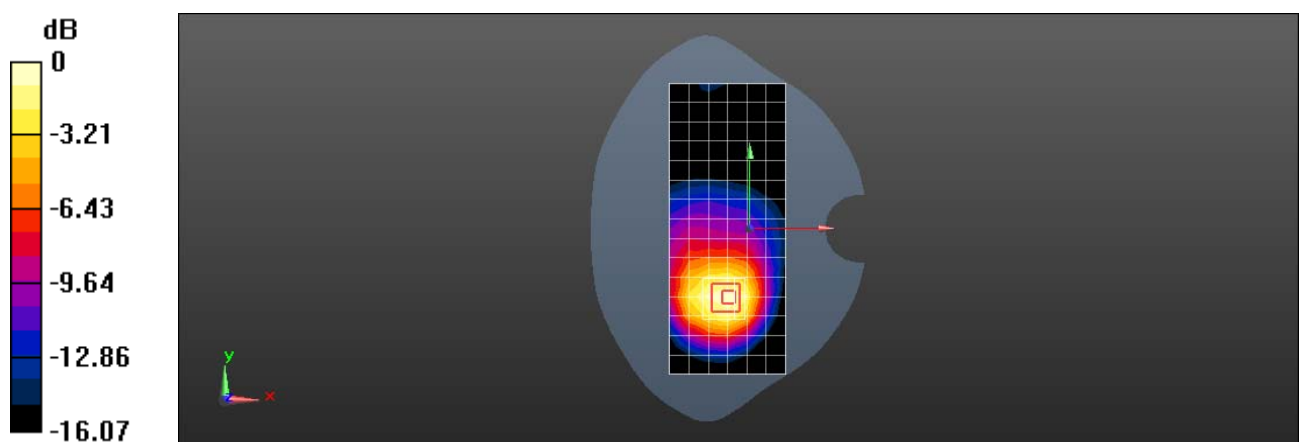
Configuration/Body/Zoom Scan (5x5x7)/Cube 0: Measurement grid: dx=8mm, dy=8mm, dz=5mm

Reference Value = 9.170 V/m; Power Drift = -0.09 dB

Peak SAR (extrapolated) = 1.58 W/kg

SAR(1 g) = 0.926 W/kg; SAR(10 g) = 0.545 W/kg

Maximum value of SAR (measured) = 1.32 W/kg



0 dB = 1.32 W/kg = 1.21 dBW/kg

Test Laboratory: SGS-SAR Lab

SC3218T WCDMA Band II 9400CH Back side 15mm Cover Close

DUT: SC3218T; Type: Smart phone; Serial: 358476180003964

Communication System: UID 0, WCDMA (0); Frequency: 1880 MHz; Duty Cycle: 1:1

Medium: HSL1900; Medium parameters used: $f = 1880$ MHz; $\sigma = 1.399$ S/m; $\epsilon_r = 38.82$; $\rho = 1000$ kg/m³

Phantom section: Flat Section

DASY 5 Configuration:

- Probe: EX3DV4 - SN7620; ConvF(8.67, 8.67, 8.67); Calibrated: 2021-08-24
- Sensor-Surface: 1.4mm (Mechanical Surface Detection)
- Electronics: DAE4 Sn1327; Calibrated: 2021-11-05
- Phantom: SAM5; Type: SAM; Serial: 1481
- DASY52 52.10.4(1527); SEMCAD X 14.6.14(7483)

Configuration/Body/Area Scan (7x11x1): Measurement grid: dx=15mm, dy=15mm
Maximum value of SAR (measured) = 0.905 W/kg

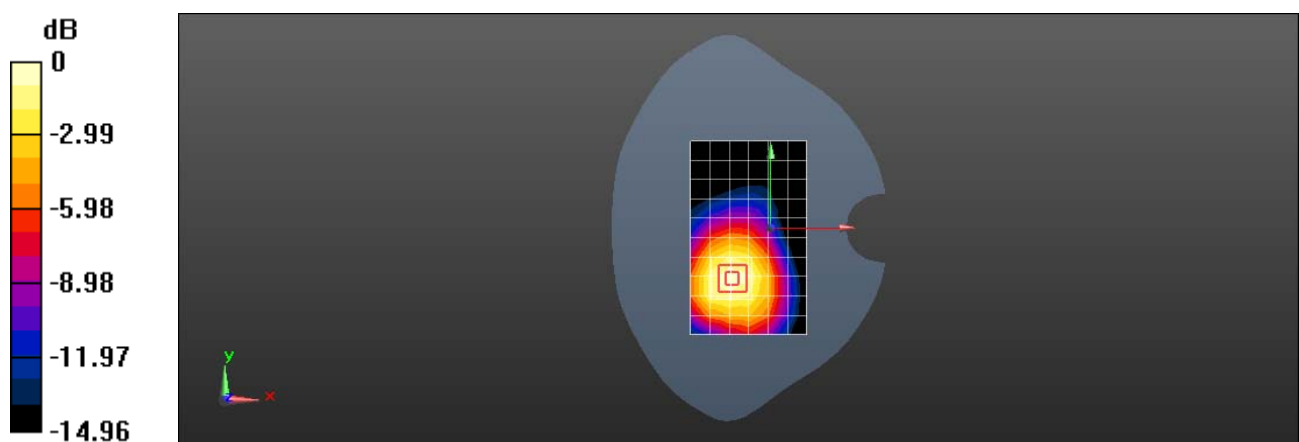
Configuration/Body/Zoom Scan (5x5x7)/Cube 0: Measurement grid: dx=8mm, dy=8mm, dz=5mm

Reference Value = 10.51 V/m; Power Drift = 0.09 dB

Peak SAR (extrapolated) = 1.08 W/kg

SAR(1 g) = 0.678 W/kg; SAR(10 g) = 0.416 W/kg

Maximum value of SAR (measured) = 0.942 W/kg



0 dB = 0.942 W/kg = -0.26 dBW/kg

Test Laboratory: SGS-SAR Lab

SC3218T WCDMA Band II 9262CH Back side 10mm Cover Close

DUT: SC3218T; Type: Smart phone; Serial: 358476180003964

Communication System: UID 0, WCDMA (0); Frequency: 1852.4 MHz; Duty Cycle: 1:1

Medium: HSL1900; Medium parameters used: $f = 1852.4$ MHz; $\sigma = 1.379$ S/m; $\epsilon_r = 38.939$; $\rho = 1000$ kg/m³

Phantom section: Flat Section

DASY 5 Configuration:

- Probe: EX3DV4 - SN7620; ConvF(8.67, 8.67, 8.67); Calibrated: 2021-08-24
- Sensor-Surface: 1.4mm (Mechanical Surface Detection)
- Electronics: DAE4 Sn1327; Calibrated: 2021-11-05
- Phantom: SAM5; Type: SAM; Serial: 1481
- DASY52 52.10.4(1527); SEMCAD X 14.6.14(7483)

Configuration/Body/Area Scan (7x11x1): Measurement grid: dx=15mm, dy=15mm
Maximum value of SAR (measured) = 1.37 W/kg

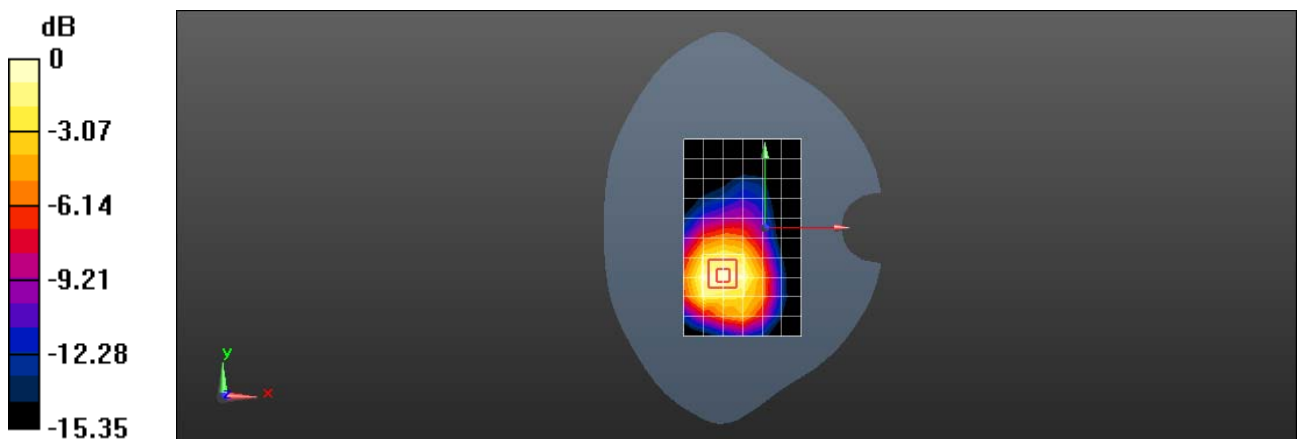
Configuration/Body/Zoom Scan (5x5x7)/Cube 0: Measurement grid: dx=8mm, dy=8mm, dz=5mm

Reference Value = 12.39 V/m; Power Drift = 0.14 dB

Peak SAR (extrapolated) = 1.60 W/kg

SAR(1 g) = 0.996 W/kg; SAR(10 g) = 0.599 W/kg

Maximum value of SAR (measured) = 1.39 W/kg



0 dB = 1.39 W/kg = 1.43 dBW/kg

Test Laboratory: SGS-SAR Lab

SC3218T WCDMA Band IV 1412CH Right cheek Cover Open

DUT: SC3218T; Type: Smart phone; Serial: 358476180003964

Communication System: UID 0, WCDMA (0); Frequency: 1732.4 MHz; Duty Cycle: 1:1

Medium: HSL1750; Medium parameters used (interpolated): $f = 1732.4$ MHz; $\sigma = 1.276$ S/m; $\epsilon_r = 39.201$; $\rho = 1000$ kg/m³
Phantom section: Right Section

DASY 5 Configuration:

- Probe: EX3DV4 - SN3789; ConvF(7.59, 7.59, 7.59); Calibrated: 2021-08-12
- Sensor-Surface: 1.4mm (Mechanical Surface Detection)
- Electronics: DAE3 Sn414; Calibrated: 2020-12-30
- Phantom: SAM6; Type: SAM; Serial: 1824
- DASY52 52.10.4(1527); SEMCAD X 14.6.14(7483)

Configuration/Head/Area Scan (7x16x1): Measurement grid: dx=15mm, dy=15mm
Maximum value of SAR (measured) = 0.185 W/kg

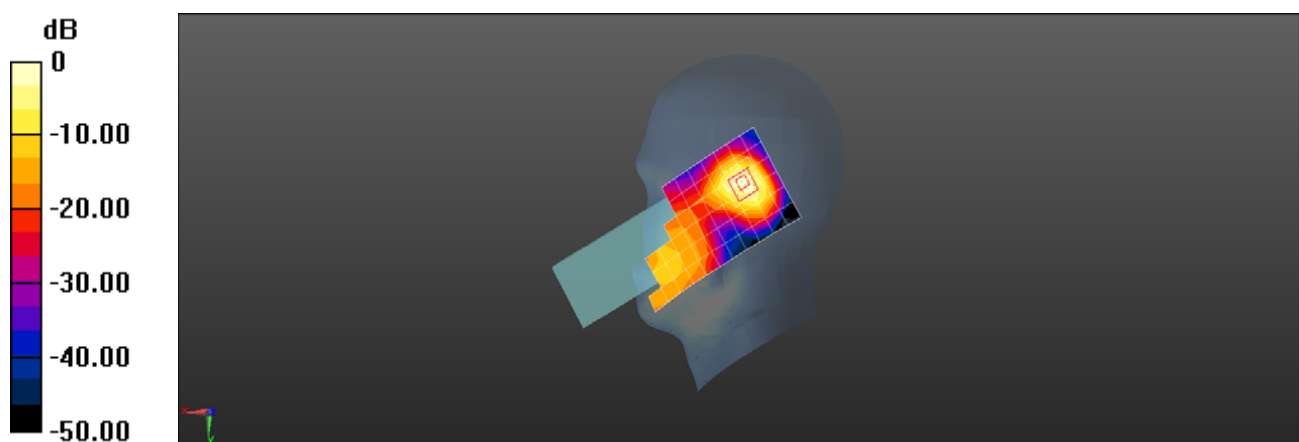
Configuration/Head/Zoom Scan (5x5x7)/Cube 0: Measurement grid: dx=8mm, dy=8mm, dz=5mm

Reference Value = 4.263 V/m; Power Drift = 0.02 dB

Peak SAR (extrapolated) = 0.233 W/kg

SAR(1 g) = 0.142 W/kg; SAR(10 g) = 0.095 W/kg

Maximum value of SAR (measured) = 0.200 W/kg



0 dB = 0.200 W/kg = -6.99 dBW/kg

Test Laboratory: SGS-SAR Lab

SC3218T WCDMA Band IV 1412CH Back side 15mm Cover Open

DUT: SC3218T; Type: Smart phone; Serial: 358476180003964

Communication System: UID 0, WCDMA (0); Frequency: 1732.4 MHz; Duty Cycle: 1:1

Medium: HSL1750; Medium parameters used (interpolated): $f = 1732.4$ MHz; $\sigma = 1.276$ S/m; $\epsilon_r = 39.201$; $\rho = 1000$ kg/m³
Phantom section: Flat Section

DASY 5 Configuration:

- Probe: EX3DV4 - SN3789; ConvF(7.59, 7.59, 7.59); Calibrated: 2021-08-12
- Sensor-Surface: 1.4mm (Mechanical Surface Detection)
- Electronics: DAE3 Sn414; Calibrated: 2020-12-30
- Phantom: SAM6; Type: SAM; Serial: 1824
- DASY52 52.10.4(1527); SEMCAD X 14.6.14(7483)

Configuration/Body/Area Scan (7x16x1): Measurement grid: dx=15mm, dy=15mm
Maximum value of SAR (measured) = 0.434 W/kg

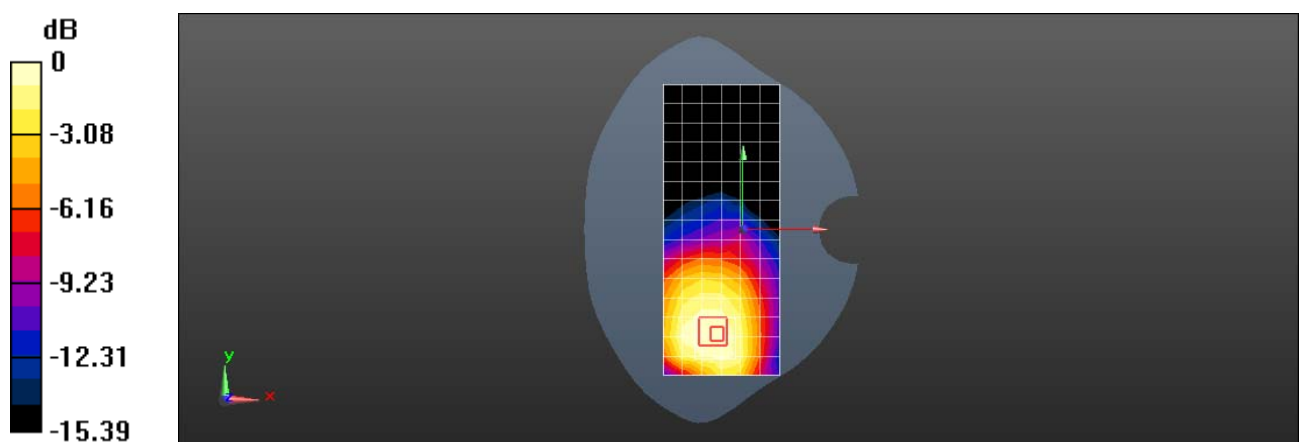
Configuration/Body/Zoom Scan (5x5x7)/Cube 0: Measurement grid: dx=8mm, dy=8mm, dz=5mm

Reference Value = 5.007 V/m; Power Drift = 0.04 dB

Peak SAR (extrapolated) = 0.507 W/kg

SAR(1 g) = 0.322 W/kg; SAR(10 g) = 0.211 W/kg

Maximum value of SAR (measured) = 0.434 W/kg



0 dB = 0.434 W/kg = -3.63 dBW/kg

Test Laboratory: SGS-SAR Lab

SC3218T WCDMA Band IV 1513CH Back side 10mm Cover Open

DUT: SC3218T; Type: Smart phone; Serial: 358476180003964

Communication System: UID 0, WCDMA (0); Frequency: 1752.6 MHz; Duty Cycle: 1:1

Medium: HSL1750; Medium parameters used: $f = 1753$ MHz; $\sigma = 1.293$ S/m; $\epsilon_r = 39.09$; $\rho = 1000$ kg/m³

Phantom section: Flat Section

DASY 5 Configuration:

- Probe: EX3DV4 - SN3789; ConvF(7.59, 7.59, 7.59); Calibrated: 2021-08-12
- Sensor-Surface: 1.4mm (Mechanical Surface Detection)
- Electronics: DAE3 Sn414; Calibrated: 2020-12-30
- Phantom: SAM6; Type: SAM; Serial: 1824
- DASY52 52.10.4(1527); SEMCAD X 14.6.14(7483)

Configuration/Body/Area Scan (7x16x1): Measurement grid: dx=15mm, dy=15mm
Maximum value of SAR (measured) = 1.04 W/kg

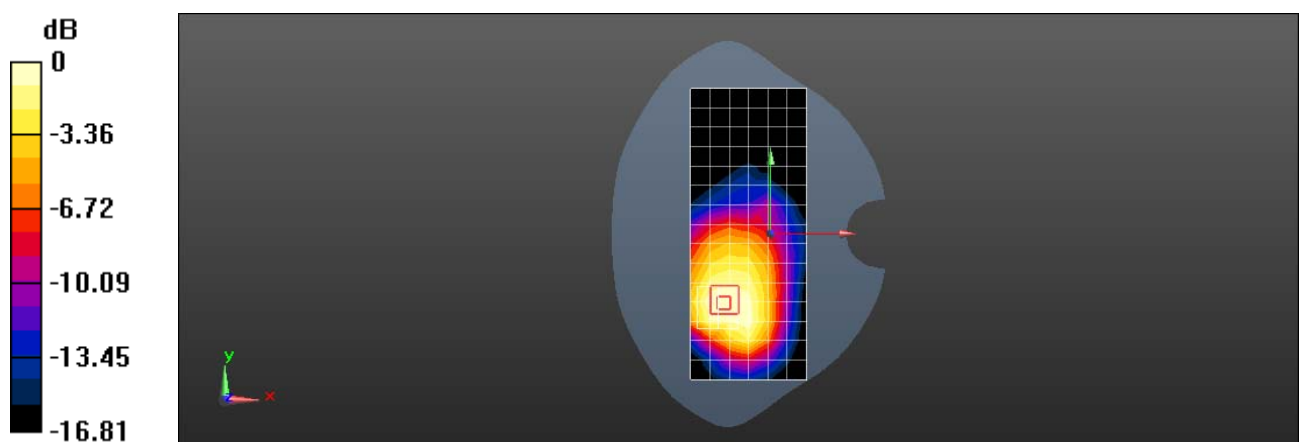
Configuration/Body/Zoom Scan (5x5x7)/Cube 0: Measurement grid: dx=8mm, dy=8mm, dz=5mm

Reference Value = 12.78 V/m; Power Drift = 0.07 dB

Peak SAR (extrapolated) = 1.24 W/kg

SAR(1 g) = 0.766 W/kg; SAR(10 g) = 0.486 W/kg

Maximum value of SAR (measured) = 1.06 W/kg



0 dB = 1.06 W/kg = 0.25 dBW/kg

Test Laboratory: SGS-SAR Lab

SC3218T WCDMA Band IV 1412CH Back side 15mm Cover Close

DUT: SC3218T; Type: Smart phone; Serial: 358476180003964

Communication System: UID 0, WCDMA (0); Frequency: 1732.4 MHz; Duty Cycle: 1:1

Medium: HSL1750; Medium parameters used (interpolated): $f = 1732.4$ MHz; $\sigma = 1.276$ S/m; $\epsilon_r = 39.201$; $\rho = 1000$ kg/m³
Phantom section: Flat Section

DASY 5 Configuration:

- Probe: EX3DV4 - SN3789; ConvF(7.59, 7.59, 7.59); Calibrated: 2021-08-12
- Sensor-Surface: 1.4mm (Mechanical Surface Detection)
- Electronics: DAE3 Sn414; Calibrated: 2020-12-30
- Phantom: SAM6; Type: SAM; Serial: 1824
- DASY52 52.10.4(1527); SEMCAD X 14.6.14(7483)

Configuration/Body/Area Scan (7x11x1): Measurement grid: dx=15mm, dy=15mm
Maximum value of SAR (measured) = 0.676 W/kg

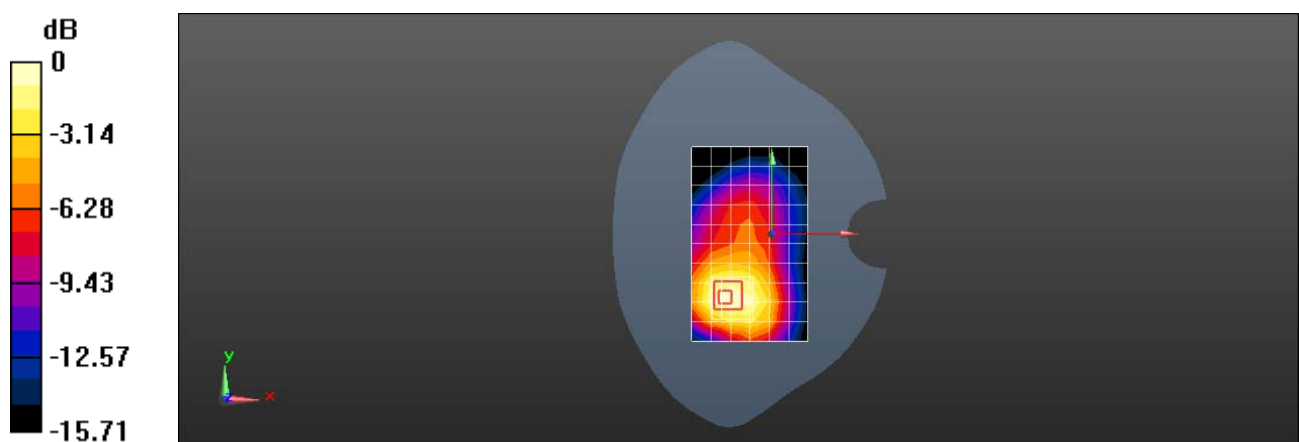
Configuration/Body/Zoom Scan (5x5x7)/Cube 0: Measurement grid: dx=8mm, dy=8mm, dz=5mm

Reference Value = 10.88 V/m; Power Drift = 0.04 dB

Peak SAR (extrapolated) = 0.812 W/kg

SAR(1 g) = 0.499 W/kg; SAR(10 g) = 0.304 W/kg

Maximum value of SAR (measured) = 0.695 W/kg



0 dB = 0.695 W/kg = -1.58 dBW/kg

Test Laboratory: SGS-SAR Lab

SC3218T WCDMA Band IV 1513CH Back side 10mm Cover Close

DUT: SC3218T; Type: Smart phone; Serial: 358476180003964

Communication System: UID 0, WCDMA (0); Frequency: 1752.6 MHz; Duty Cycle: 1:1

Medium: HSL1750; Medium parameters used: $f = 1753$ MHz; $\sigma = 1.293$ S/m; $\epsilon_r = 39.09$; $\rho = 1000$ kg/m³

Phantom section: Flat Section

DASY 5 Configuration:

- Probe: EX3DV4 - SN3789; ConvF(7.59, 7.59, 7.59); Calibrated: 2021-08-12
- Sensor-Surface: 1.4mm (Mechanical Surface Detection)
- Electronics: DAE3 Sn414; Calibrated: 2020-12-30
- Phantom: SAM6; Type: SAM; Serial: 1824
- DASY52 52.10.4(1527); SEMCAD X 14.6.14(7483)

Configuration/Body/Area Scan (7x11x1): Measurement grid: dx=15mm, dy=15mm
Maximum value of SAR (measured) = 1.53 W/kg

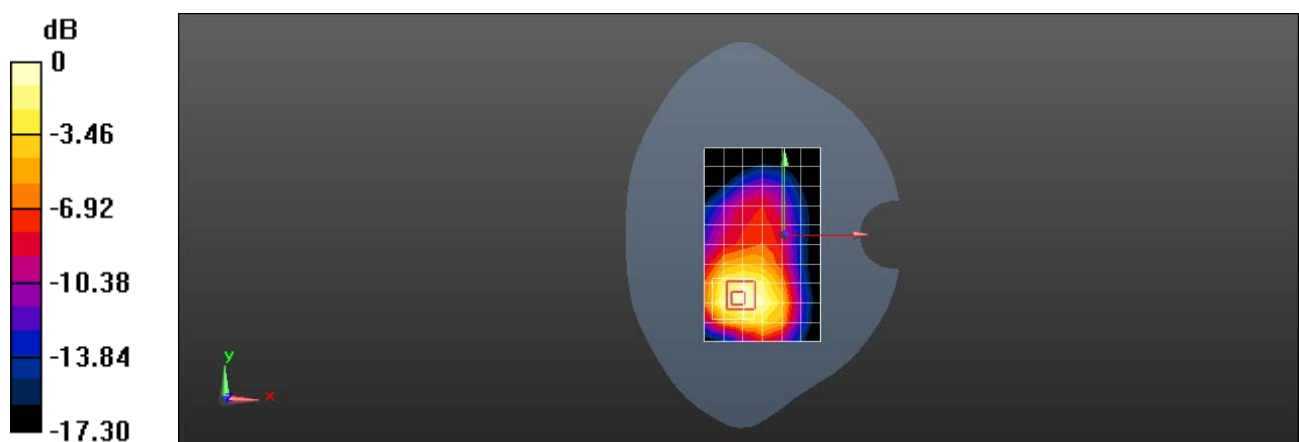
Configuration/Body/Zoom Scan (5x5x7)/Cube 0: Measurement grid: dx=8mm, dy=8mm, dz=5mm

Reference Value = 14.00 V/m; Power Drift = 0.08 dB

Peak SAR (extrapolated) = 1.86 W/kg

SAR(1 g) = 1.14 W/kg; SAR(10 g) = 0.679 W/kg

Maximum value of SAR (measured) = 1.57 W/kg



0 dB = 1.57 W/kg = 1.96 dBW/kg

Test Laboratory: SGS-SAR Lab

SC3218T LTE Band 12 10M QPSK 1RB25 23095CH Right cheek Cover Open

DUT: SC3218T; Type: Smart phone; Serial: 358476180003964

Communication System: UID 0, LTE-FDD BW 10MHZ (0); Frequency: 707.5 MHz;Duty Cycle: 1:1

Medium: HSL750;Medium parameters used: $f = 707.5$ MHz; $\sigma = 0.878$ S/m; $\epsilon_r = 43.423$; $\rho = 1000$ kg/m³

Phantom section: Right Section

DASY 5 Configuration:

- Probe: EX3DV4 - SN3789; ConvF(8.9, 8.9, 8.9); Calibrated: 2021-08-12
- Sensor-Surface: 1.4mm (Mechanical Surface Detection)
- Electronics: DAE3 Sn414; Calibrated: 2020-12-30
- Phantom: SAM6; Type: SAM; Serial: 1824
- DASY52 52.10.4(1527); SEMCAD X 14.6.14(7483)

Configuration/Head/Area Scan (7x16x1): Measurement grid: dx=15mm, dy=15mm

Maximum value of SAR (measured) = 0.0426 W/kg

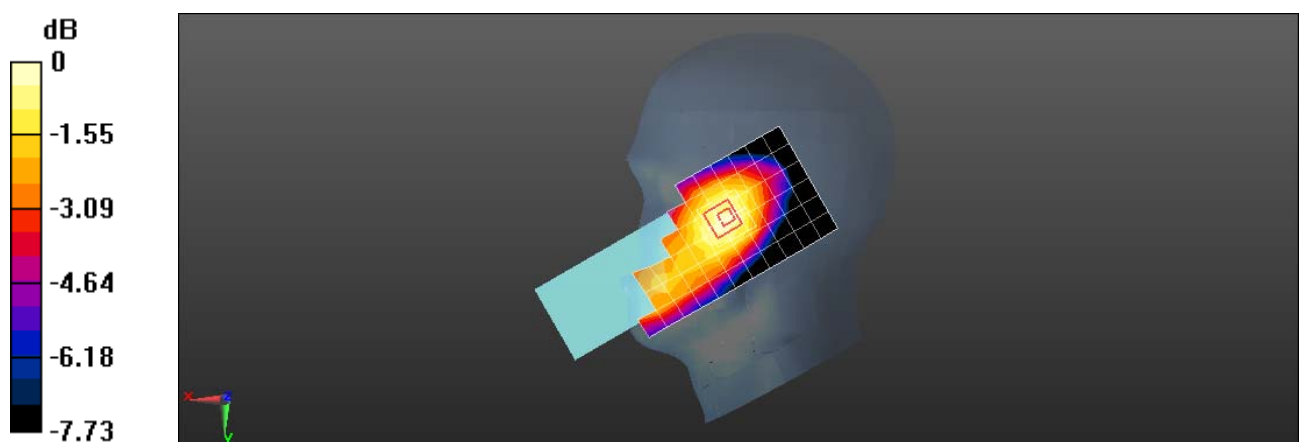
Configuration/Head/Zoom Scan (5x5x7)/Cube 0: Measurement grid: dx=8mm, dy=8mm, dz=5mm

Reference Value = 4.180 V/m; Power Drift = 0.17 dB

Peak SAR (extrapolated) = 0.0460 W/kg

SAR(1 g) = 0.039 W/kg; SAR(10 g) = 0.031 W/kg

Maximum value of SAR (measured) = 0.0443 W/kg



0 dB = 0.0443 W/kg = -13.54 dBW/kg

Test Laboratory: SGS-SAR Lab

SC3218T LTE Band 12 10M QPSK 1RB25 23095CH Back side 15mm Cover Open

DUT: SC3218T; Type: Smart phone; Serial: 358476180003964

Communication System: UID 0, LTE-FDD BW 10MHZ (0); Frequency: 707.5 MHz; Duty Cycle: 1:1

Medium: HSL750; Medium parameters used: $f = 707.5$ MHz; $\sigma = 0.878$ S/m; $\epsilon_r = 43.423$; $\rho = 1000$ kg/m³

Phantom section: Flat Section

DASY 5 Configuration:

- Probe: EX3DV4 - SN3789; ConvF(8.9, 8.9, 8.9); Calibrated: 2021-08-12
- Sensor-Surface: 1.4mm (Mechanical Surface Detection)
- Electronics: DAE3 Sn414; Calibrated: 2020-12-30
- Phantom: SAM6; Type: SAM; Serial: 1824
- DASY52 52.10.4(1527); SEMCAD X 14.6.14(7483)

Configuration/Body/Area Scan (7x16x1): Measurement grid: dx=15mm, dy=15mm

Maximum value of SAR (measured) = 0.460 W/kg

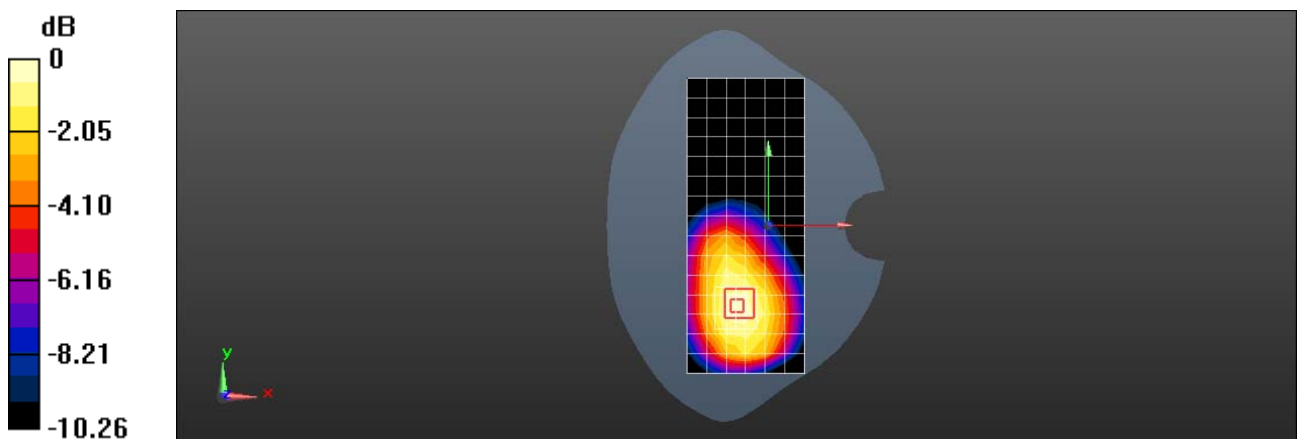
Configuration/Body/Zoom Scan (5x5x7)/Cube 0: Measurement grid: dx=8mm, dy=8mm, dz=5mm

Reference Value = 10.63 V/m; Power Drift = 0.13 dB

Peak SAR (extrapolated) = 0.529 W/kg

SAR(1 g) = 0.391 W/kg; SAR(10 g) = 0.284 W/kg

Maximum value of SAR (measured) = 0.486 W/kg



0 dB = 0.486 W/kg = -3.13 dBW/kg

Test Laboratory: SGS-SAR Lab

SC3218T LTE Band 12 10M QPSK 25RB0 23095CH Back side 10mm Cover Open

DUT: SC3218T; Type: Smart phone; Serial: 358476180003964

Communication System: UID 0, LTE-FDD BW 10MHZ (0); Frequency: 707.5 MHz;Duty Cycle: 1:1

Medium: HSL750;Medium parameters used: $f = 707.5$ MHz; $\sigma = 0.878$ S/m; $\epsilon_r = 43.423$; $\rho = 1000$ kg/m³

Phantom section: Flat Section

DASY 5 Configuration:

- Probe: EX3DV4 - SN3789; ConvF(8.9, 8.9, 8.9); Calibrated: 2021-08-12
- Sensor-Surface: 1.4mm (Mechanical Surface Detection)
- Electronics: DAE3 Sn414; Calibrated: 2020-12-30
- Phantom: SAM6; Type: SAM; Serial: 1824
- DASY52 52.10.4(1527); SEMCAD X 14.6.14(7483)

Configuration/Body/Area Scan (7x16x1): Measurement grid: dx=15mm, dy=15mm

Maximum value of SAR (measured) = 0.680 W/kg

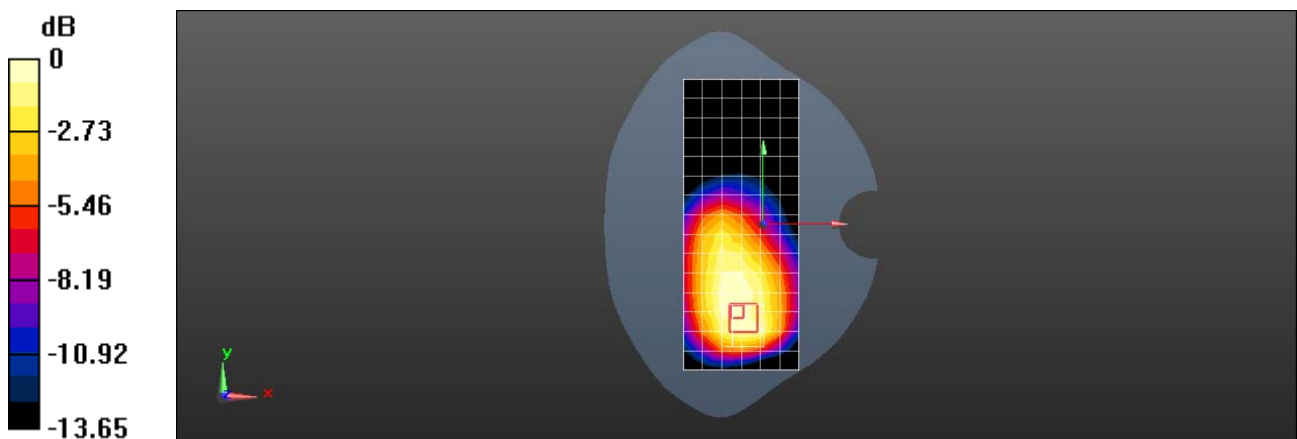
Configuration/Body/Zoom Scan (5x5x7)/Cube 0: Measurement grid: dx=8mm, dy=8mm, dz=5mm

Reference Value = 15.55 V/m; Power Drift = 0.18 dB

Peak SAR (extrapolated) = 0.808 W/kg

SAR(1 g) = 0.516 W/kg; SAR(10 g) = 0.356 W/kg

Maximum value of SAR (measured) = 0.696 W/kg



0 dB = 0.696 W/kg = -1.57 dBW/kg

Test Laboratory: SGS-SAR Lab

SC3218T LTE Band 12 10M QPSK 1RB25 23095CH Back side 15mm Cover Close

DUT: SC3218T; Type: Smart phone; Serial: 358476180003964

Communication System: UID 0, LTE-FDD BW 10MHZ (0); Frequency: 707.5 MHz; Duty Cycle: 1:1

Medium: HSL750; Medium parameters used: $f = 707.5$ MHz; $\sigma = 0.878$ S/m; $\epsilon_r = 43.423$; $\rho = 1000$ kg/m³

Phantom section: Flat Section

DASY 5 Configuration:

- Probe: EX3DV4 - SN3789; ConvF(8.9, 8.9, 8.9); Calibrated: 2021-08-12
- Sensor-Surface: 1.4mm (Mechanical Surface Detection)
- Electronics: DAE3 Sn414; Calibrated: 2020-12-30
- Phantom: SAM6; Type: SAM; Serial: 1824
- DASY52 52.10.4(1527); SEMCAD X 14.6.14(7483)

Configuration/Body/Area Scan (7x11x1): Measurement grid: dx=15mm, dy=15mm

Maximum value of SAR (measured) = 0.524 W/kg

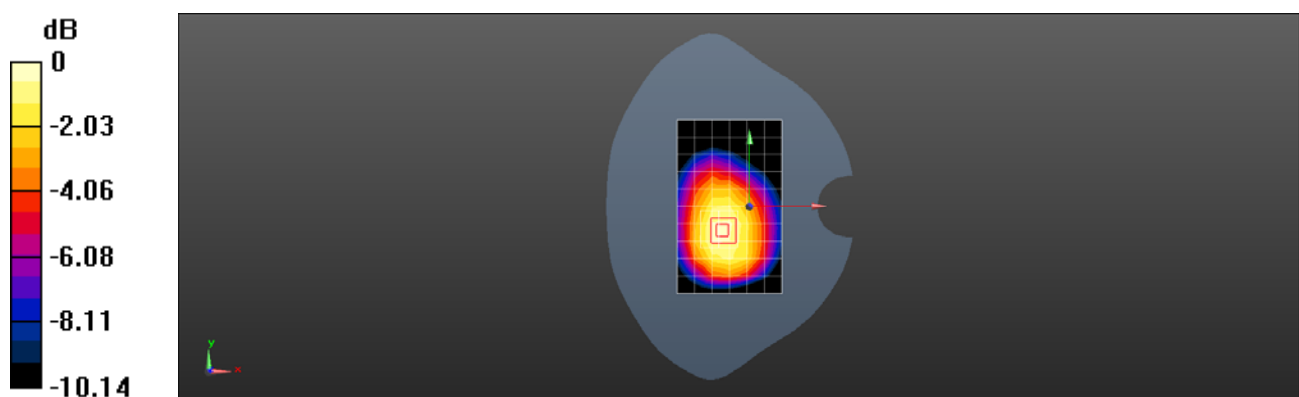
Configuration/Body/Zoom Scan (5x5x7)/Cube 0: Measurement grid: dx=8mm, dy=8mm, dz=5mm

Reference Value = 20.64 V/m; Power Drift = 0.12 dB

Peak SAR (extrapolated) = 0.653 W/kg

SAR(1 g) = 0.472 W/kg; SAR(10 g) = 0.337 W/kg

Maximum value of SAR (measured) = 0.586 W/kg



0 dB = 0.586 W/kg = -2.32 dBW/kg

Test Laboratory: SGS-SAR Lab

SC3218T LTE Band 12 10M QPSK 1RB25 23095CH Back side 10mm Cover Close

DUT: SC3218T; Type: Smart phone; Serial: 358476180003964

Communication System: UID 0, LTE-FDD BW 10MHZ (0); Frequency: 707.5 MHz; Duty Cycle: 1:1

Medium: HSL750; Medium parameters used: $f = 707.5$ MHz; $\sigma = 0.878$ S/m; $\epsilon_r = 43.423$; $\rho = 1000$ kg/m³

Phantom section: Flat Section

DASY 5 Configuration:

- Probe: EX3DV4 - SN3789; ConvF(8.9, 8.9, 8.9); Calibrated: 2021-08-12
- Sensor-Surface: 1.4mm (Mechanical Surface Detection)
- Electronics: DAE3 Sn414; Calibrated: 2020-12-30
- Phantom: SAM6; Type: SAM; Serial: 1824
- DASY52 52.10.4(1527); SEMCAD X 14.6.14(7483)

Configuration/Body/Area Scan (7x11x1): Measurement grid: dx=15mm, dy=15mm

Maximum value of SAR (measured) = 0.779 W/kg

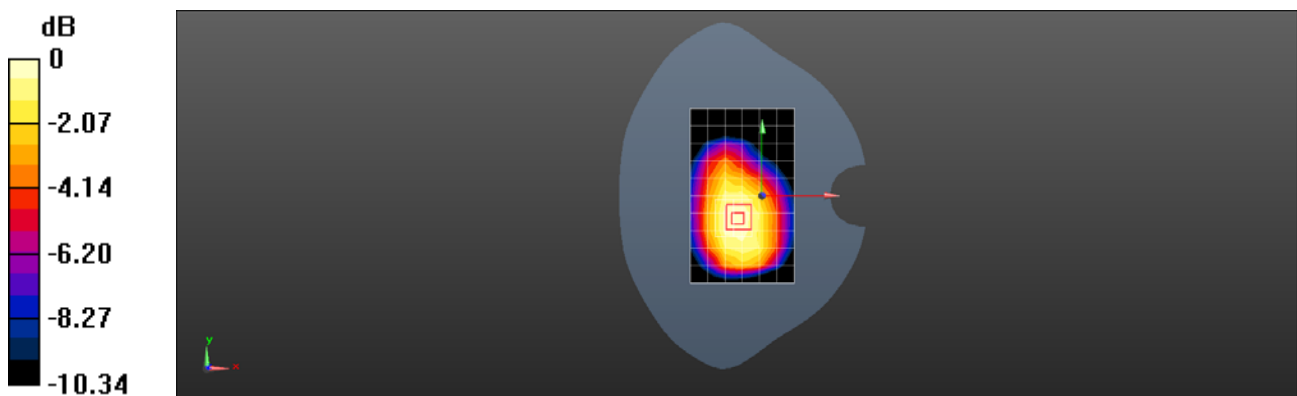
Configuration/Body/Zoom Scan (5x5x7)/Cube 0: Measurement grid: dx=8mm, dy=8mm, dz=5mm

Reference Value = 20.64 V/m; Power Drift = 0.12 dB

Peak SAR (extrapolated) = 0.888 W/kg

SAR(1 g) = 0.662 W/kg; SAR(10 g) = 0.483 W/kg

Maximum value of SAR (measured) = 0.810 W/kg



0 dB = 0.810 W/kg = -0.92 dBW/kg

Test Laboratory: SGS-SAR Lab

SC3218T LTE Band 25 20M QPSK 50RB0 26140CH Right cheek Cover Open

DUT: SC3218T; Type: Smart phone; Serial: 358476180003964

Communication System: UID 0, LTE-FDD BW 20MHz (0); Frequency: 1860 MHz; Duty Cycle: 1:1

Medium: HSL1900; Medium parameters used: $f = 1860$ MHz; $\sigma = 1.41$ S/m; $\epsilon_r = 39.193$; $\rho = 1000$ kg/m³

Phantom section: Right Section

DASY 5 Configuration:

- Probe: EX3DV4 - SN3789; ConvF(7.3, 7.3, 7.3); Calibrated: 2021-08-12
- Sensor-Surface: 1.4mm (Mechanical Surface Detection)
- Electronics: DAE3 Sn414; Calibrated: 2020-12-30
- Phantom: SAM6; Type: SAM; Serial: 1824
- DASY52 52.10.4(1527); SEMCAD X 14.6.14(7483)

Configuration/Head/Area Scan (8x17x1): Measurement grid: dx=15mm, dy=15mm

Maximum value of SAR (measured) = 0.0669 W/kg

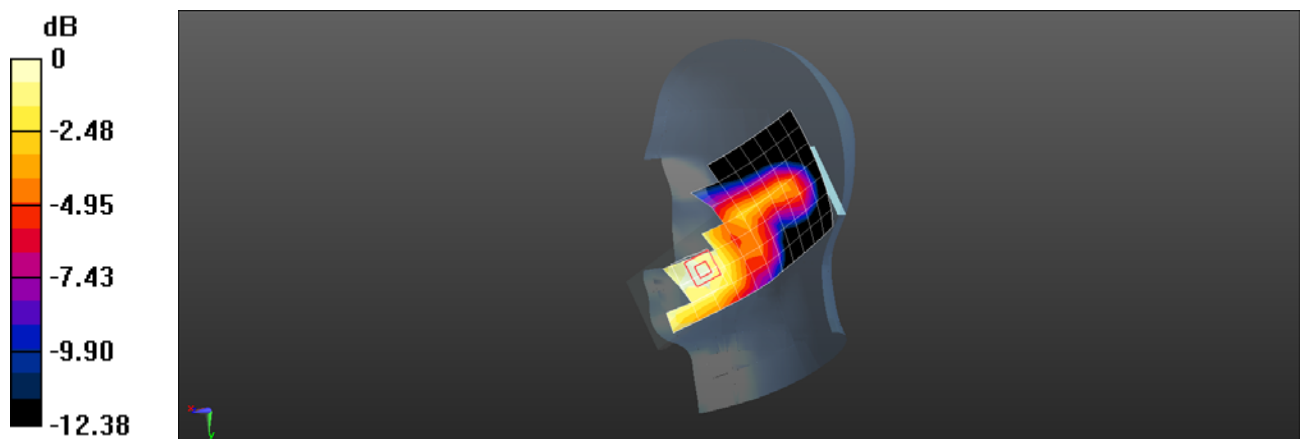
Configuration/Head/Zoom Scan (5x5x7)/Cube 0: Measurement grid: dx=8mm, dy=8mm, dz=5mm

Reference Value = 2.932 V/m; Power Drift = 0.13 dB

Peak SAR (extrapolated) = 0.0790 W/kg

SAR(1 g) = 0.050 W/kg; SAR(10 g) = 0.034 W/kg

Maximum value of SAR (measured) = 0.0673 W/kg



0 dB = 0.0673 W/kg = -11.72 dBW/kg

Test Laboratory: SGS-SAR Lab

SC3218T LTE Band 25 20M QPSK 1RB50 26590CH Back side 15mm cover Open

DUT: SC3218T; Type: Smart phone; Serial: 358476180003964

Communication System: UID 0, LTE-FDD BW 20MHz (0); Frequency: 1905 MHz; Duty Cycle: 1:1

Medium: HSL1900; Medium parameters used: $f = 1905$ MHz; $\sigma = 1.448$ S/m; $\epsilon_r = 38.975$; $\rho = 1000$ kg/m³

Phantom section: Flat Section

DASY 5 Configuration:

- Probe: EX3DV4 - SN3789; ConvF(7.3, 7.3, 7.3); Calibrated: 2021-08-12
- Sensor-Surface: 1.4mm (Mechanical Surface Detection)
- Electronics: DAE3 Sn414; Calibrated: 2020-12-30
- Phantom: SAM6; Type: SAM; Serial: 1824
- DASY52 52.10.4(1527); SEMCAD X 14.6.14(7483)

Configuration/Body/Area Scan (7x16x1): Measurement grid: dx=15mm, dy=15mm

Maximum value of SAR (measured) = 0.488 W/kg

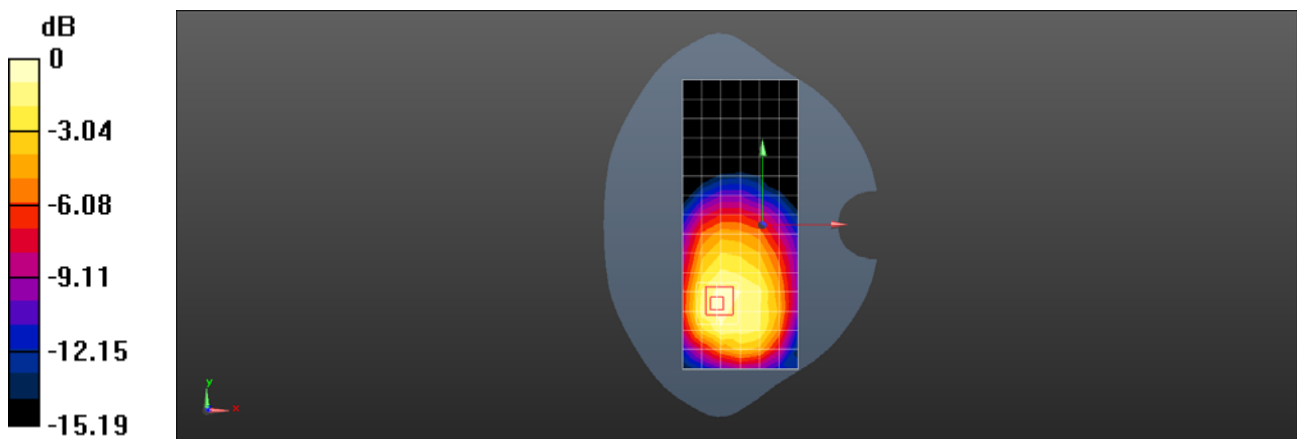
Configuration/Body/Zoom Scan (5x5x7)/Cube 0: Measurement grid: dx=8mm, dy=8mm, dz=5mm

Reference Value = 8.714 V/m; Power Drift = 0.12 dB

Peak SAR (extrapolated) = 0.624 W/kg

SAR(1 g) = 0.363 W/kg; SAR(10 g) = 0.219 W/kg

Maximum value of SAR (measured) = 0.525 W/kg



0 dB = 0.525 W/kg = -2.80 dBW/kg

Test Laboratory: SGS-SAR Lab

SC3218T LTE Band 25 20M QPSK 1RB50 26590CH Back side 10mm Cover Open

DUT: SC3218T; Type: Smart phone; Serial: 358476180003964

Communication System: UID 0, LTE-FDD BW 20MHz (0); Frequency: 1905 MHz; Duty Cycle: 1:1

Medium: HSL1900; Medium parameters used: $f = 1905$ MHz; $\sigma = 1.448$ S/m; $\epsilon_r = 38.975$; $\rho = 1000$ kg/m³

Phantom section: Flat Section

DASY 5 Configuration:

- Probe: EX3DV4 - SN3789; ConvF(7.3, 7.3, 7.3); Calibrated: 2021-08-12
- Sensor-Surface: 1.4mm (Mechanical Surface Detection)
- Electronics: DAE3 Sn414; Calibrated: 2020-12-30
- Phantom: SAM6; Type: SAM; Serial: 1824
- DASY52 52.10.4(1527); SEMCAD X 14.6.14(7483)

Configuration/Body/Area Scan (7x16x1): Measurement grid: dx=15mm, dy=15mm

Maximum value of SAR (measured) = 0.767 W/kg

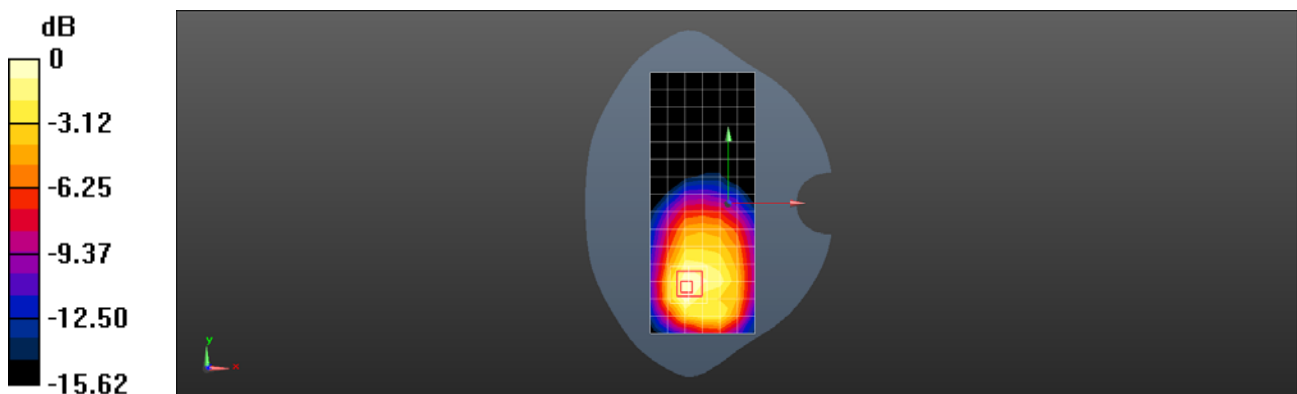
Configuration/Body/Zoom Scan (5x5x7)/Cube 0: Measurement grid: dx=8mm, dy=8mm, dz=5mm

Reference Value = 7.756 V/m; Power Drift = 0.19 dB

Peak SAR (extrapolated) = 0.922 W/kg

SAR(1 g) = 0.533 W/kg; SAR(10 g) = 0.315 W/kg

Maximum value of SAR (measured) = 0.762 W/kg



0 dB = 0.762 W/kg = -1.18 dBW/kg

Test Laboratory: SGS-SAR Lab

SC3218T LTE Band 25 20M QPSK 1RB50 26590CH Back side 15mm Cover Close

DUT: SC3218T; Type: Smart phone; Serial: 358476180003964

Communication System: UID 0, LTE-FDD BW 20MHz (0); Frequency: 1905 MHz; Duty Cycle: 1:1

Medium: HSL1900; Medium parameters used: $f = 1905$ MHz; $\sigma = 1.448$ S/m; $\epsilon_r = 38.975$; $\rho = 1000$ kg/m³

Phantom section: Flat Section

DASY 5 Configuration:

- Probe: EX3DV4 - SN3789; ConvF(7.3, 7.3, 7.3); Calibrated: 2021-08-12
- Sensor-Surface: 1.4mm (Mechanical Surface Detection)
- Electronics: DAE3 Sn414; Calibrated: 2020-12-30
- Phantom: SAM6; Type: SAM; Serial: 1824
- DASY52 52.10.4(1527); SEMCAD X 14.6.14(7483)

Configuration/Body/Area Scan (7x11x1): Measurement grid: dx=15mm, dy=15mm

Maximum value of SAR (measured) = 0.686 W/kg

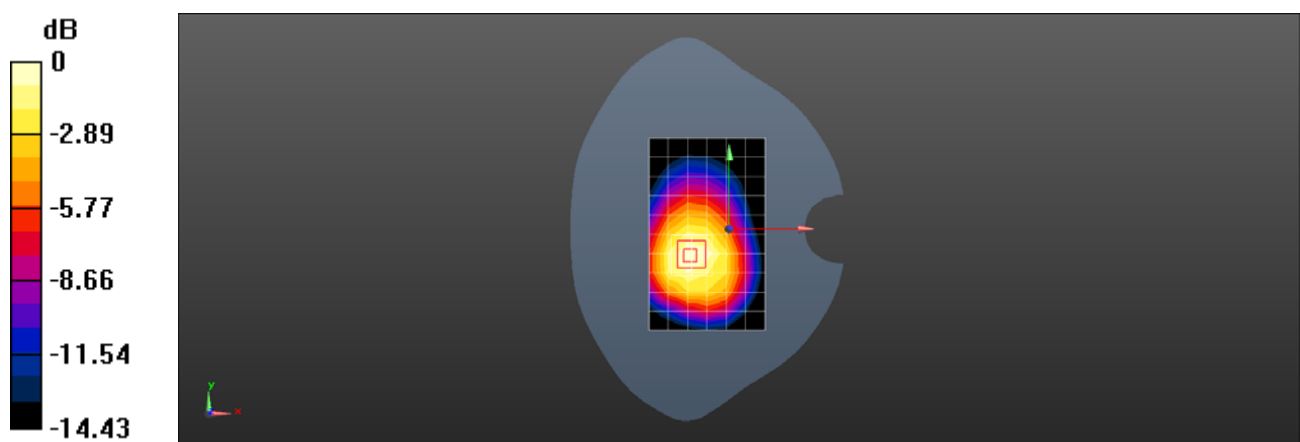
Configuration/Body/Zoom Scan (5x5x7)/Cube 0: Measurement grid: dx=8mm, dy=8mm, dz=5mm

Reference Value = 14.13 V/m; Power Drift = 0.11 dB

Peak SAR (extrapolated) = 0.809 W/kg

SAR(1 g) = 0.489 W/kg; SAR(10 g) = 0.302 W/kg

Maximum value of SAR (measured) = 0.687 W/kg



0 dB = 0.687 W/kg = -1.63 dBW/kg

Test Laboratory: SGS-SAR Lab

SC3218T LTE Band 25 20M QPSK 1RB50 26140CH Back side 10mm Cover Close

DUT: SC3218T; Type: Smart phone; Serial: 358476180003964

Communication System: UID 0, LTE-FDD BW 20MHz (0); Frequency: 1860 MHz; Duty Cycle: 1:1

Medium: HSL1900; Medium parameters used: $f = 1860$ MHz; $\sigma = 1.41$ S/m; $\epsilon_r = 39.193$; $\rho = 1000$ kg/m³

Phantom section: Flat Section

DASY 5 Configuration:

- Probe: EX3DV4 - SN3789; ConvF(7.3, 7.3, 7.3); Calibrated: 2021-08-12
- Sensor-Surface: 1.4mm (Mechanical Surface Detection)
- Electronics: DAE3 Sn414; Calibrated: 2020-12-30
- Phantom: SAM6; Type: SAM; Serial: 1824
- DASY52 52.10.4(1527); SEMCAD X 14.6.14(7483)

Configuration/Body/Area Scan (7x11x1): Measurement grid: dx=15mm, dy=15mm
Maximum value of SAR (measured) = 1.14 W/kg

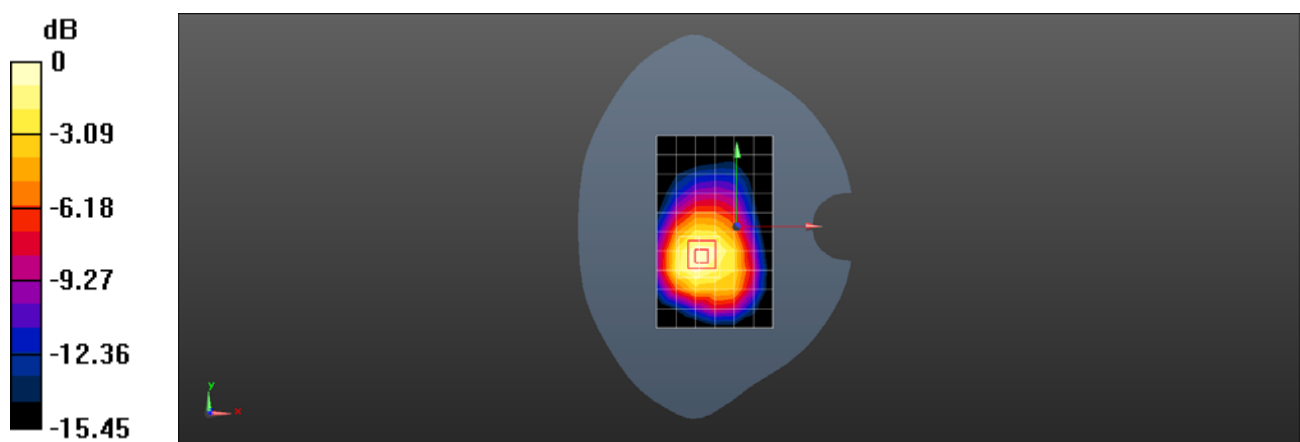
Configuration/Body/Zoom Scan (5x5x7)/Cube 0: Measurement grid: dx=8mm, dy=8mm, dz=5mm

Reference Value = 16.51 V/m; Power Drift = 0.16 dB

Peak SAR (extrapolated) = 1.41 W/kg

SAR(1 g) = 0.870 W/kg; SAR(10 g) = 0.525 W/kg

Maximum value of SAR (measured) = 1.21 W/kg



0 dB = 1.21 W/kg = 0.83 dBW/kg

Test Laboratory: SGS-SAR Lab

SC3218T LTE Band 26 15M QPSK 1RB0 26865CH Left cheek cover open

DUT: SC3218T; Type: Smart phone; Serial: 358476180003964

Communication System: UID 0, LTE-FDD BW 15MHz (0); Frequency: 831.5 MHz; Duty Cycle: 1:1

Medium: HSL835; Medium parameters used (interpolated): $f = 831.5$ MHz; $\sigma = 0.921$ S/m; $\epsilon_r = 42.426$; $\rho = 1000$ kg/m³
Phantom section: Left Section

DASY 5 Configuration:

- Probe: EX3DV4 - SN3789; ConvF(8.54, 8.54, 8.54); Calibrated: 2021-08-12
- Sensor-Surface: 2mm (Mechanical Surface Detection)
- Electronics: DAE3 Sn414; Calibrated: 2020-12-30
- Phantom: SAM6; Type: SAM; Serial: 1824
- DASY52 52.10.4(1527); SEMCAD X 14.6.14(7483)

Configuration/Head/Area Scan (7x16x1): Measurement grid: dx=15mm, dy=15mm
Maximum value of SAR (measured) = 0.296 W/kg

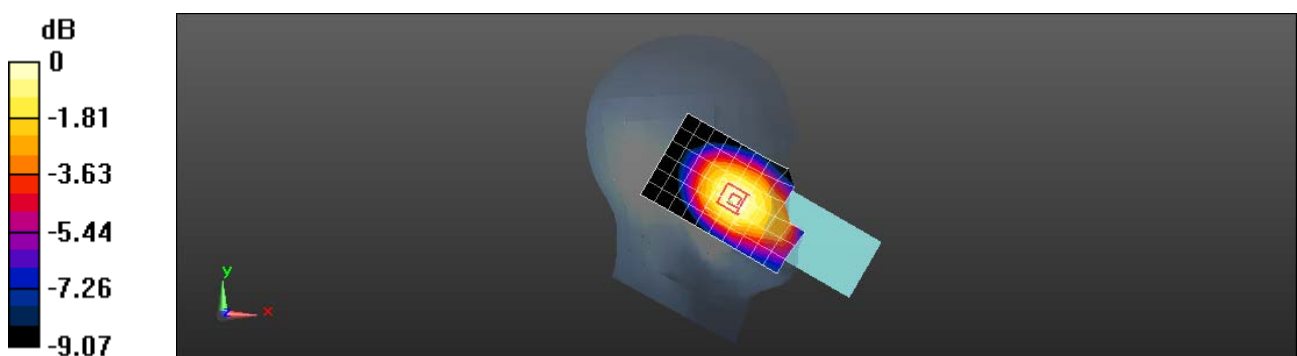
Configuration/Head/Zoom Scan (5x5x7)/Cube 0: Measurement grid: dx=8mm, dy=8mm, dz=5mm

Reference Value = 5.767 V/m; Power Drift = -0.02 dB

Peak SAR (extrapolated) = 0.341 W/kg

SAR(1 g) = 0.255 W/kg; SAR(10 g) = 0.191 W/kg

Maximum value of SAR (measured) = 0.309 W/kg



0 dB = 0.309 W/kg = -5.10 dBW/kg

Test Laboratory: SGS-SAR Lab

SC3218T LTE Band 26 15M QPSK 1RB0 26865CH Back side 15mm cover open

DUT: SC3218T; Type: Smart phone; Serial: 358476180003964

Communication System: UID 0, LTE-FDD BW 15MHz (0); Frequency: 831.5 MHz; Duty Cycle: 1:1

Medium: HSL835; Medium parameters used (interpolated): $f = 831.5$ MHz; $\sigma = 0.921$ S/m; $\epsilon_r = 42.426$; $\rho = 1000$ kg/m³
Phantom section: Flat Section

DASY 5 Configuration:

- Probe: EX3DV4 - SN3789; ConvF(8.54, 8.54, 8.54); Calibrated: 2021-08-12
- Sensor-Surface: 2mm (Mechanical Surface Detection)
- Electronics: DAE3 Sn414; Calibrated: 2020-12-30
- Phantom: SAM6; Type: SAM; Serial: 1824
- DASY52 52.10.4(1527); SEMCAD X 14.6.14(7483)

Configuration/Body/Area Scan (7x16x1): Measurement grid: dx=15mm, dy=15mm
Maximum value of SAR (measured) = 0.427 W/kg

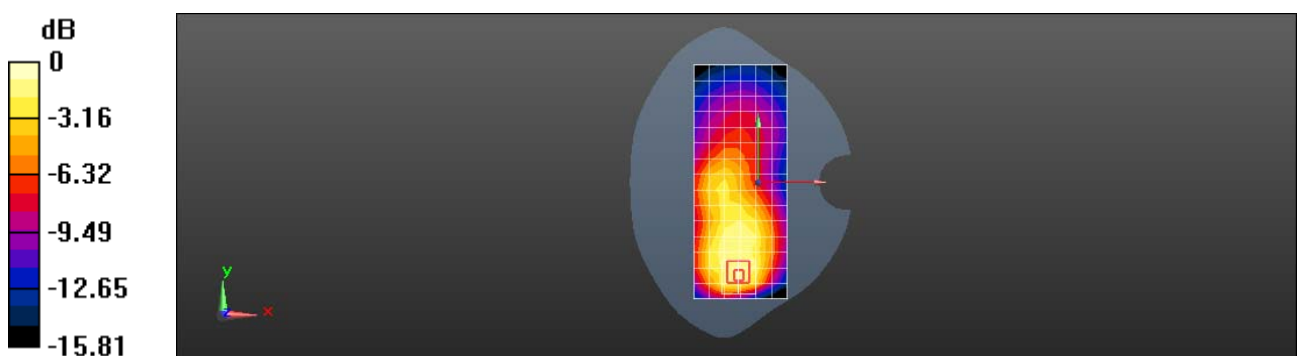
Configuration/Body/Zoom Scan (5x5x7)/Cube 0: Measurement grid: dx=8mm, dy=8mm, dz=5mm

Reference Value = 13.19 V/m; Power Drift = 0.12 dB

Peak SAR (extrapolated) = 0.677 W/kg

SAR(1 g) = 0.358 W/kg; SAR(10 g) = 0.216 W/kg

Maximum value of SAR (measured) = 0.547 W/kg



0 dB = 0.547 W/kg = -2.62 dBW/kg

Test Laboratory: SGS-SAR Lab

SC3218T LTE Band 26 15M QPSK 1RB0 26865CH Back side 10mm cover open

DUT: SC3218T; Type: Smart phone; Serial: 358476180003964

Communication System: UID 0, LTE-FDD BW 15MHz (0); Frequency: 831.5 MHz; Duty Cycle: 1:1

Medium: HSL835; Medium parameters used (interpolated): $f = 831.5$ MHz; $\sigma = 0.921$ S/m; $\epsilon_r = 42.426$; $\rho = 1000$ kg/m³
Phantom section: Flat Section

DASY 5 Configuration:

- Probe: EX3DV4 - SN3789; ConvF(8.54, 8.54, 8.54); Calibrated: 2021-08-12
- Sensor-Surface: 2mm (Mechanical Surface Detection)
- Electronics: DAE3 Sn414; Calibrated: 2020-12-30
- Phantom: SAM6; Type: SAM; Serial: 1824
- DASY52 52.10.4(1527); SEMCAD X 14.6.14(7483)

Configuration/Body/Area Scan (7x16x1): Measurement grid: dx=15mm, dy=15mm
Maximum value of SAR (measured) = 0.665 W/kg

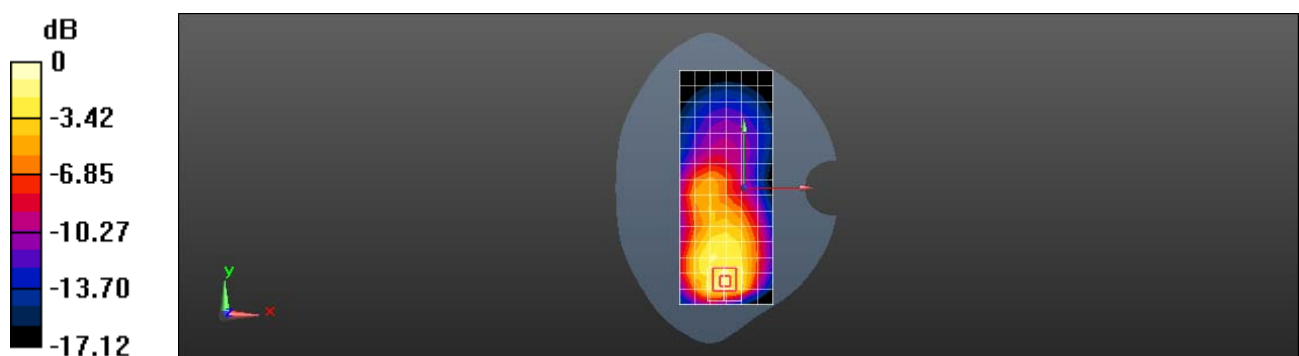
Configuration/Body/Zoom Scan (5x5x7)/Cube 0: Measurement grid: dx=8mm, dy=8mm, dz=5mm

Reference Value = 14.37 V/m; Power Drift = 0.02 dB

Peak SAR (extrapolated) = 1.30 W/kg

SAR(1 g) = 0.634 W/kg; SAR(10 g) = 0.354 W/kg

Maximum value of SAR (measured) = 1.01 W/kg



0 dB = 1.01 W/kg = 0.04 dBW/kg

Test Laboratory: SGS-SAR Lab

SC3218T LTE Band 26 15M QPSK 1RB0 26865CH Back side 15mm cover close

DUT: SC3218T; Type: Smart phone; Serial: 358476180003964

Communication System: UID 0, LTE-FDD BW 15MHz (0); Frequency: 831.5 MHz; Duty Cycle: 1:1

Medium: HSL835; Medium parameters used (interpolated): $f = 831.5$ MHz; $\sigma = 0.921$ S/m; $\epsilon_r = 42.426$; $\rho = 1000$ kg/m³
Phantom section: Flat Section

DASY 5 Configuration:

- Probe: EX3DV4 - SN3789; ConvF(8.54, 8.54, 8.54); Calibrated: 2021-08-12
- Sensor-Surface: 2mm (Mechanical Surface Detection)
- Electronics: DAE3 Sn414; Calibrated: 2020-12-30
- Phantom: SAM6; Type: SAM; Serial: 1824
- DASY52 52.10.4(1527); SEMCAD X 14.6.14(7483)

Configuration/Body/Area Scan (7x10x1): Measurement grid: dx=15mm, dy=15mm
Maximum value of SAR (measured) = 0.605 W/kg

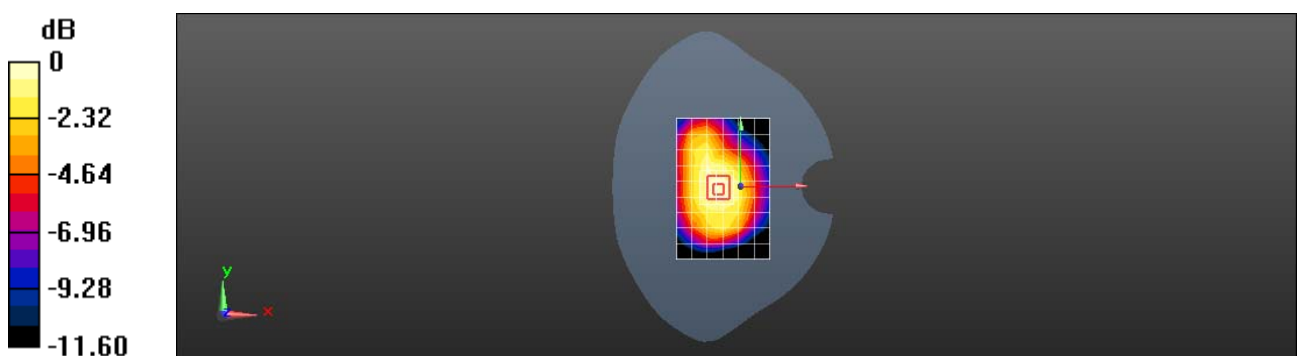
Configuration/Body/Zoom Scan (5x5x7)/Cube 0: Measurement grid: dx=8mm, dy=8mm, dz=5mm

Reference Value = 23.52 V/m; Power Drift = 0.08 dB

Peak SAR (extrapolated) = 0.749 W/kg

SAR(1 g) = 0.514 W/kg; SAR(10 g) = 0.360 W/kg

Maximum value of SAR (measured) = 0.659 W/kg



0 dB = 0.659 W/kg = -1.81 dBW/kg

Test Laboratory: SGS-SAR Lab

SC3218T LTE Band 26 15M QPSK 1RB0 26865CH Back side 10mm cover close

DUT: SC3218T; Type: Smart phone; Serial: 358476180003964

Communication System: UID 0, LTE-FDD BW 15MHz (0); Frequency: 831.5 MHz; Duty Cycle: 1:1

Medium: HSL835; Medium parameters used (interpolated): $f = 831.5$ MHz; $\sigma = 0.921$ S/m; $\epsilon_r = 42.426$; $\rho = 1000$ kg/m³
Phantom section: Flat Section

DASY 5 Configuration:

- Probe: EX3DV4 - SN3789; ConvF(8.54, 8.54, 8.54); Calibrated: 2021-08-12
- Sensor-Surface: 2mm (Mechanical Surface Detection)
- Electronics: DAE3 Sn414; Calibrated: 2020-12-30
- Phantom: SAM6; Type: SAM; Serial: 1824
- DASY52 52.10.4(1527); SEMCAD X 14.6.14(7483)

Configuration/Body/Area Scan (7x10x1): Measurement grid: dx=15mm, dy=15mm
Maximum value of SAR (measured) = 0.837 W/kg

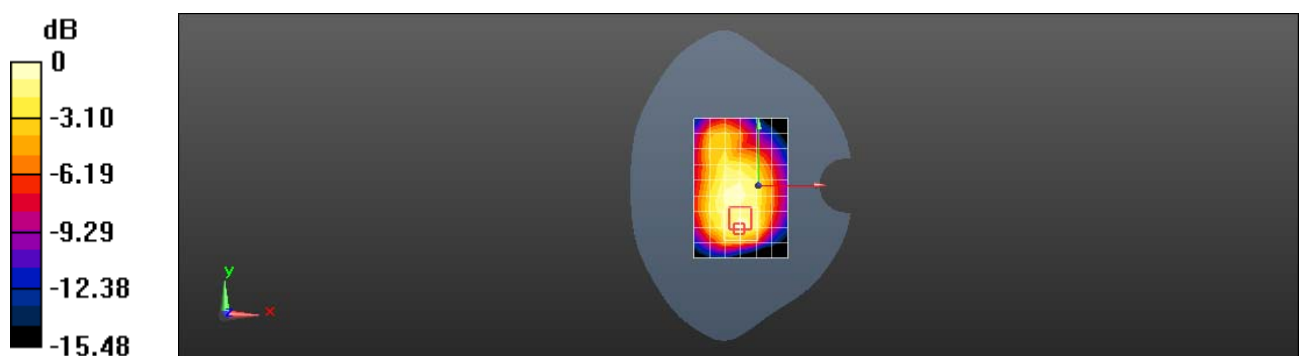
Configuration/Body/Zoom Scan (5x5x7)/Cube 0: Measurement grid: dx=8mm, dy=8mm, dz=5mm

Reference Value = 25.06 V/m; Power Drift = 0.05 dB

Peak SAR (extrapolated) = 1.14 W/kg

SAR(1 g) = 0.561 W/kg; SAR(10 g) = 0.351 W/kg

Maximum value of SAR (measured) = 0.857 W/kg



0 dB = 0.857 W/kg = -0.67 dBW/kg

Test Laboratory: SGS-SAR Lab

SC3218T LTE Band 41 20M QPSK 1RB50 41055CH Right cheek cover open - Class2

DUT: SC3218T; Type: Smart phone; Serial: 358476180003964

Communication System: UID 0, LTE-TDD BW 20MHz (0); Frequency: 2636.5 MHz; Duty Cycle: 1:2.31

Medium: HSL2600; Medium parameters used (interpolated): $f = 2636.5$ MHz; $\sigma = 2.061$ S/m; $\epsilon_r = 37.639$; $\rho = 1000$ kg/m³
Phantom section: Right Section

DASY 5 Configuration:

- Probe: EX3DV4 - SN7620; ConvF(7.97, 7.97, 7.97); Calibrated: 2021-08-24
- Sensor-Surface: 1.4mm (Mechanical Surface Detection)
- Electronics: DAE4 Sn1327; Calibrated: 2021-11-05
- Phantom: SAM5; Type: SAM; Serial: 1481
- DASY52 52.10.4(1527); SEMCAD X 14.6.14(7483)

Configuration/Head/Area Scan (9x20x1): Measurement grid: dx=12mm, dy=12mm
Maximum value of SAR (measured) = 0.0490 W/kg

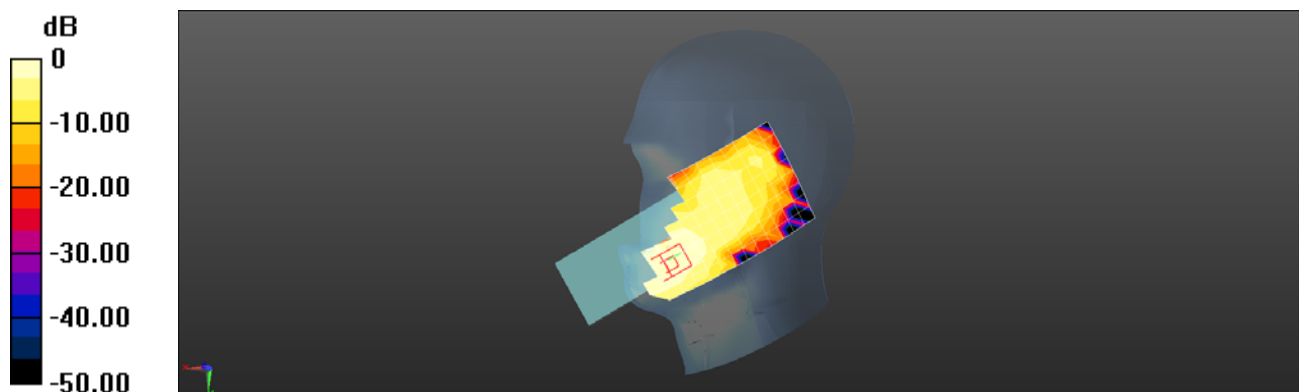
Configuration/Head/Zoom Scan (7x7x7)/Cube 0: Measurement grid: dx=5mm, dy=5mm, dz=5mm

Reference Value = 2.260 V/m; Power Drift = -0.10 dB

Peak SAR (extrapolated) = 0.0620 W/kg

SAR(1 g) = 0.026 W/kg; SAR(10 g) = 0.014 W/kg

Maximum value of SAR (measured) = 0.0440 W/kg



0 dB = 0.0440 W/kg = -13.57 dBW/kg

Test Laboratory: SGS-SAR Lab

SC3218T LTE Band 41 20M QPSK 1RB50 41055CH Back side 15mm Cover Open - Class2

DUT: SC3218T; Type: Smart phone; Serial: 358476180003964

Communication System: UID 0, LTE-TDD BW 20MHz (0); Frequency: 2636.5 MHz; Duty Cycle: 1:2.31

Medium: HSL2600; Medium parameters used (interpolated): $f = 2636.5$ MHz; $\sigma = 2.061$ S/m; $\epsilon_r = 37.639$; $\rho = 1000$ kg/m³
Phantom section: Flat Section

DASY 5 Configuration:

- Probe: EX3DV4 - SN7620; ConvF(7.97, 7.97, 7.97); Calibrated: 2021-08-24
- Sensor-Surface: 1.4mm (Mechanical Surface Detection)
- Electronics: DAE4 Sn1327; Calibrated: 2021-11-05
- Phantom: SAM5; Type: SAM; Serial: 1481
- DASY52 52.10.4(1527); SEMCAD X 14.6.14(7483)

Configuration/Body/Area Scan (8x20x1): Measurement grid: dx=12mm, dy=12mm
Maximum value of SAR (measured) = 0.951 W/kg

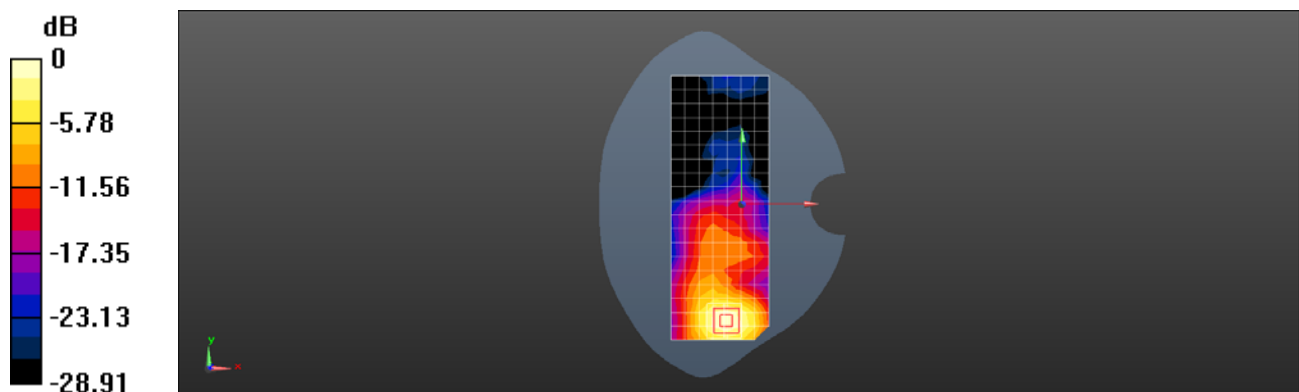
Configuration/Body/Zoom Scan (7x7x7)/Cube 0: Measurement grid: dx=5mm, dy=5mm, dz=5mm

Reference Value = 2.820 V/m; Power Drift = 0.05 dB

Peak SAR (extrapolated) = 1.34 W/kg

SAR(1 g) = 0.647 W/kg; SAR(10 g) = 0.310 W/kg

Maximum value of SAR (measured) = 1.07 W/kg



0 dB = 1.07 W/kg = 0.29 dBW/kg

Test Laboratory: SGS-SAR Lab

SC3218T LTE Band 41 20M QPSK 1RB50 39750CH Back side 10mm Cover Open - Class2

DUT: SC3218T; Type: Smart phone; Serial: 358476180003964

Communication System: UID 0, LTE-TDD BW 20MHz (0); Frequency: 2506 MHz;Duty Cycle: 1:2.31

Medium: HSL2600;Medium parameters used: $f = 2506$ MHz; $\sigma = 1.912$ S/m; $\epsilon_r = 38.107$; $\rho = 1000$

kg/m³

Phantom section: Flat Section

DASY 5 Configuration:

- Probe: EX3DV4 - SN7620; ConvF(7.97, 7.97, 7.97); Calibrated: 2021-08-24
- Sensor-Surface: 1.4mm (Mechanical Surface Detection)
- Electronics: DAE4 Sn1327; Calibrated: 2021-11-05
- Phantom: SAM5; Type: SAM; Serial: 1481
- DASY52 52.10.4(1527); SEMCAD X 14.6.14(7483)

Configuration/Body/Area Scan (8x20x1): Measurement grid: dx=12mm, dy=12mm
Maximum value of SAR (measured) = 1.84 W/kg

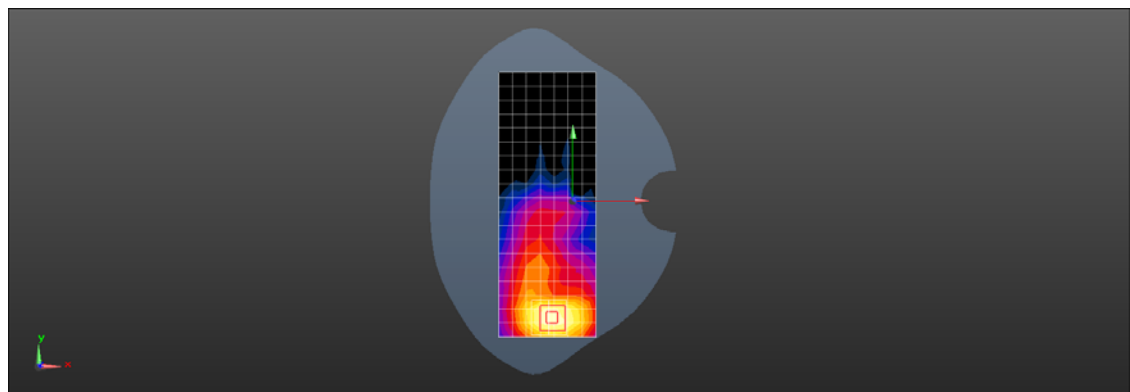
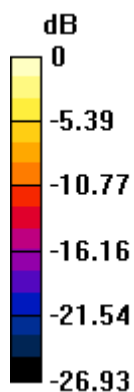
Configuration/Body/Zoom Scan (7x7x7)/Cube 0: Measurement grid: dx=5mm, dy=5mm, dz=5mm

Reference Value = 4.407 V/m; Power Drift = 0.17 dB

Peak SAR (extrapolated) = 2.64 W/kg

SAR(1 g) = 1.3 W/kg; SAR(10 g) = 0.612 W/kg

Maximum value of SAR (measured) = 2.13 W/kg



0 dB = 2.13 W/kg = 3.28 dBW/kg

Test Laboratory: SGS-SAR Lab

SC3218T LTE Band 41 20M QPSK 1RB50 41055CH Back side 15mm Cover Close - Class2

DUT: SC3218T; Type: Smart phone; Serial: 358476180003824

Communication System: UID 0, LTE-TDD BW 20MHz (0); Frequency: 2636.5 MHz; Duty Cycle: 1:2.31

Medium: HSL2600; Medium parameters used (interpolated): $f = 2636.5$ MHz; $\sigma = 2.061$ S/m; $\epsilon_r = 37.639$; $\rho = 1000$ kg/m³
Phantom section: Flat Section

DASY 5 Configuration:

- Probe: EX3DV4 - SN7620; ConvF(7.97, 7.97, 7.97); Calibrated: 2021-08-24
- Sensor-Surface: 1.4mm (Mechanical Surface Detection)
- Electronics: DAE4 Sn1327; Calibrated: 2021-11-05
- Phantom: SAM5; Type: SAM; Serial: 1481
- DASY52 52.10.4(1527); SEMCAD X 14.6.14(7483)

Configuration/Body/Area Scan (8x13x1): Measurement grid: dx=12mm, dy=12mm
Maximum value of SAR (measured) = 1.09 W/kg

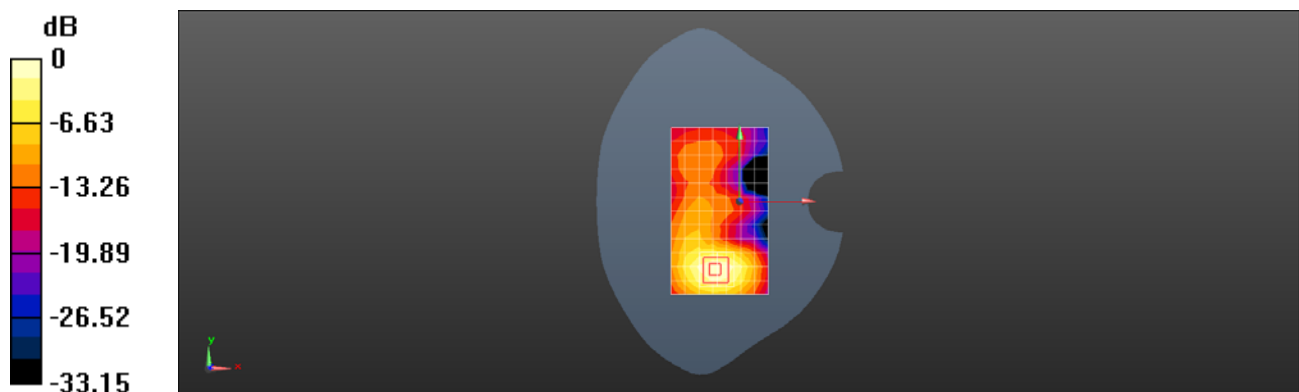
Configuration/Body/Zoom Scan (7x7x7)/Cube 0: Measurement grid: dx=5mm, dy=5mm, dz=5mm

Reference Value = 4.333 V/m; Power Drift = 0.17 dB

Peak SAR (extrapolated) = 1.36 W/kg

SAR(1 g) = 0.653 W/kg; SAR(10 g) = 0.310 W/kg

Maximum value of SAR (measured) = 1.09 W/kg



0 dB = 1.09 W/kg = 0.37 dBW/kg

Test Laboratory: SGS-SAR Lab

SC3218T LTE Band 41 20M QPSK 1RB50 40620CH Back side 10mm Cover Close - Class2

DUT: SC3218T; Type: Smart phone; Serial: 358476180003964

Communication System: UID 0, LTE-TDD BW 20MHz (0); Frequency: 2593 MHz; Duty Cycle: 1:2.31

Medium: HSL2600; Medium parameters used: $f = 2593$ MHz; $\sigma = 2.016$ S/m; $\epsilon_r = 37.82$; $\rho = 1000$

kg/m³

Phantom section: Flat Section

DASY 5 Configuration:

- Probe: EX3DV4 - SN7620; ConvF(7.97, 7.97, 7.97); Calibrated: 2021-08-24
- Sensor-Surface: 1.4mm (Mechanical Surface Detection)
- Electronics: DAE4 Sn1327; Calibrated: 2021-11-05
- Phantom: SAM5; Type: SAM; Serial: 1481
- DASY52 52.10.4(1527); SEMCAD X 14.6.14(7483)

Configuration/Body/Area Scan (8x13x1): Measurement grid: dx=12mm, dy=12mm
Maximum value of SAR (measured) = 2.17 W/kg

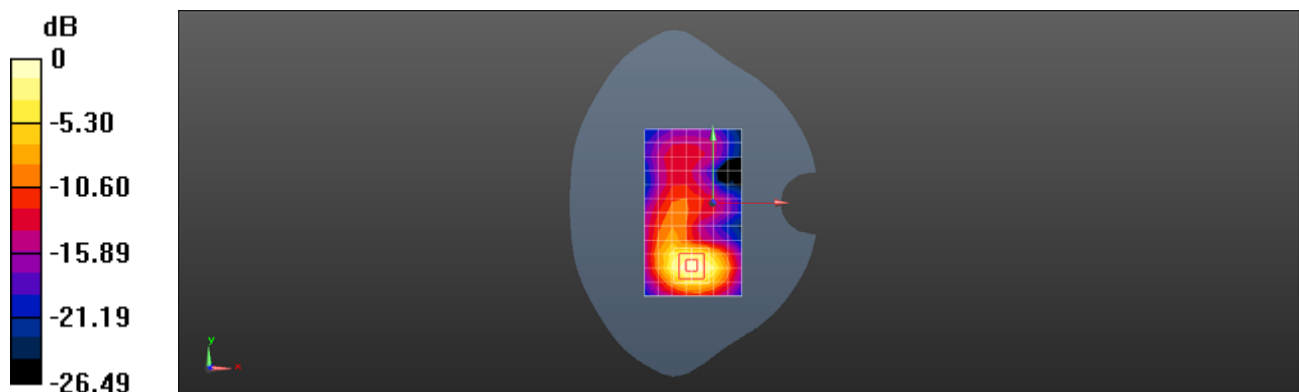
Configuration/Body/Zoom Scan (7x7x7)/Cube 0: Measurement grid: dx=5mm, dy=5mm, dz=5mm

Reference Value = 7.273 V/m; Power Drift = 0.03 dB

Peak SAR (extrapolated) = 2.74 W/kg

SAR(1 g) = 1.28 W/kg; SAR(10 g) = 0.598 W/kg

Maximum value of SAR (measured) = 2.20 W/kg



0 dB = 2.20 W/kg = 3.42 dBW/kg

Test Laboratory: SGS-SAR Lab

SC3218T LTE Band 66 20M QPSK 1RB0 132322CH Left cheek Cover Open

DUT: SC3218T; Type: Smart phone; Serial: 358476180003964

Communication System: UID 0, LTE-FDD BW 20MHz (0); Frequency: 1745 MHz; Duty Cycle: 1:1

Medium: HSL1750; Medium parameters used: $f = 1745$ MHz; $\sigma = 1.34$ S/m; $\epsilon_r = 39.43$; $\rho = 1000$ kg/m³

Phantom section: Left Section

DASY 5 Configuration:

- Probe: EX3DV4 - SN3789; ConvF(7.61, 7.61, 7.61); Calibrated: 2021-10-09
- Sensor-Surface: 1.4mm (Mechanical Surface Detection)
- Electronics: DAE3 Sn414; Calibrated: 2020-12-30
- Phantom: SAM6; Type: SAM; Serial: 1824
- DASY52 52.10.4(1527); SEMCAD X 14.6.14(7483)

Configuration/Head/Area Scan (7x17x1): Measurement grid: dx=15mm, dy=15mm

Maximum value of SAR (measured) = 0.126 W/kg

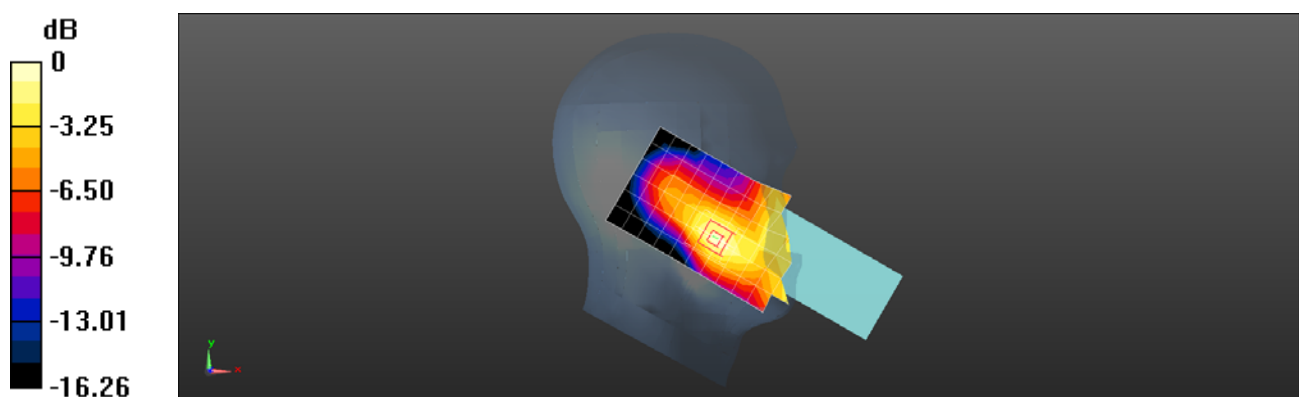
Configuration/Head/Zoom Scan (5x5x7)/Cube 0: Measurement grid: dx=8mm, dy=8mm, dz=5mm

Reference Value = 2.838 V/m; Power Drift = 0.11 dB

Peak SAR (extrapolated) = 0.145 W/kg

SAR(1 g) = 0.095 W/kg; SAR(10 g) = 0.059 W/kg

Maximum value of SAR (measured) = 0.130 W/kg



0 dB = 0.130 W/kg = -8.86 dBW/kg

Test Laboratory: SGS-SAR Lab

SC3218T LTE Band 66 20M QPSK 1RB0 132322CH Back side 15mm Cover Open

DUT: SC3218T; Type: Smart phone; Serial: 358476180003964

Communication System: UID 0, LTE-FDD BW 20MHz (0); Frequency: 1745 MHz; Duty Cycle: 1:1

Medium: HSL1750; Medium parameters used: $f = 1745$ MHz; $\sigma = 1.34$ S/m; $\epsilon_r = 39.43$; $\rho = 1000$ kg/m³

Phantom section: Flat Section

DASY 5 Configuration:

- Probe: EX3DV4 - SN3789; ConvF(7.61, 7.61, 7.61); Calibrated: 2021-10-09
- Sensor-Surface: 1.4mm (Mechanical Surface Detection)
- Electronics: DAE3 Sn414; Calibrated: 2020-12-30
- Phantom: SAM6; Type: SAM; Serial: 1824
- DASY52 52.10.4(1527); SEMCAD X 14.6.14(7483)

Configuration/Body/Area Scan (7x16x1): Measurement grid: dx=15mm, dy=15mm

Maximum value of SAR (measured) = 0.481 W/kg

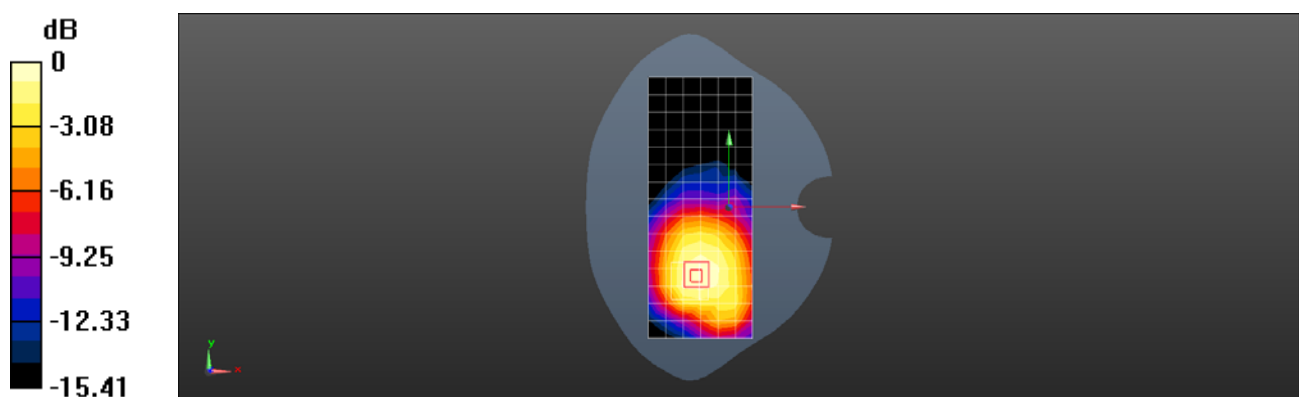
Configuration/Body/Zoom Scan (5x5x7)/Cube 0: Measurement grid: dx=8mm, dy=8mm, dz=5mm

Reference Value = 6.683 V/m; Power Drift = 0.19 dB

Peak SAR (extrapolated) = 0.613 W/kg

SAR(1 g) = 0.396 W/kg; SAR(10 g) = 0.257 W/kg

Maximum value of SAR (measured) = 0.523 W/kg



0 dB = 0.523 W/kg = -2.81 dBW/kg

Test Laboratory: SGS-SAR Lab

SC3218T LTE Band 66 20M QPSK 1RB99 132572CH Back side 10mm Cover Open

DUT: SC3218T; Type: Smart phone; Serial: 358476180003964

Communication System: UID 0, LTE-FDD BW 20MHz (0); Frequency: 1770 MHz; Duty Cycle: 1:1

Medium: HSL1750; Medium parameters used: $f = 1770$ MHz; $\sigma = 1.337$ S/m; $\epsilon_r = 38.639$; $\rho = 1000$ kg/m³

Phantom section: Flat Section

DASY 5 Configuration:

- Probe: EX3DV4 - SN3789; ConvF(7.61, 7.61, 7.61); Calibrated: 2021-10-09
- Sensor-Surface: 1.4mm (Mechanical Surface Detection)
- Electronics: DAE3 Sn414; Calibrated: 2020-12-30
- Phantom: SAM6; Type: SAM; Serial: 1824
- DASY52 52.10.4(1527); SEMCAD X 14.6.14(7483)

Configuration/Body/Area Scan (7x16x1): Measurement grid: dx=15mm, dy=15mm

Maximum value of SAR (measured) = 1.35 W/kg

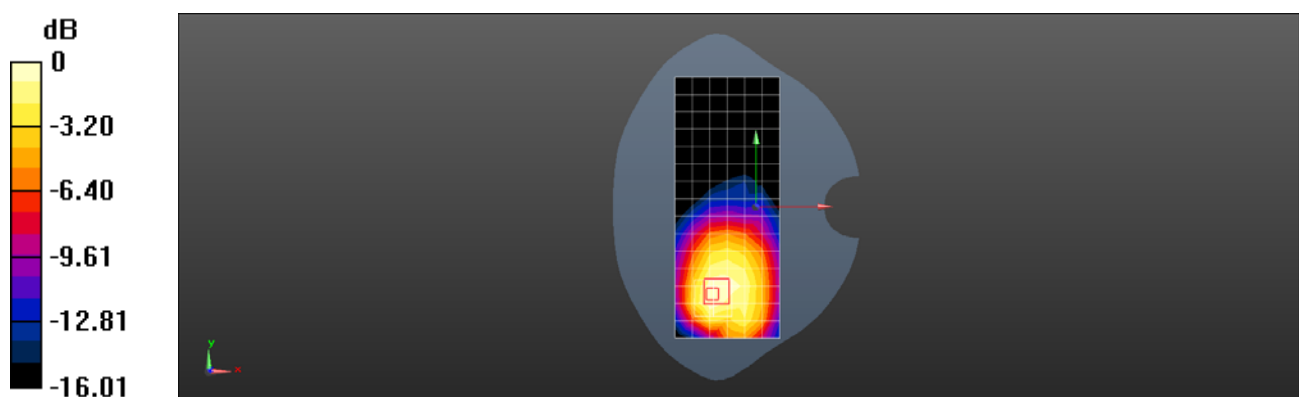
Configuration/Body/Zoom Scan (5x5x7)/Cube 0: Measurement grid: dx=8mm, dy=8mm, dz=5mm

Reference Value = 7.203 V/m; Power Drift = 0.10 dB

Peak SAR (extrapolated) = 1.65 W/kg

SAR(1 g) = 0.984 W/kg; SAR(10 g) = 0.600 W/kg

Maximum value of SAR (measured) = 1.38 W/kg



0 dB = 1.38 W/kg = 1.40 dBW/kg

Test Laboratory: SGS-SAR Lab

SC3218T LTE Band 66 20M QPSK 1RB0 132322CH Back side 15mm Cover Close

DUT: SC3218T; Type: Smart phone; Serial: 358476180003964

Communication System: UID 0, LTE-FDD BW 20MHz (0); Frequency: 1745 MHz;Duty Cycle: 1:1

Medium: HSL1750;Medium parameters used: $f = 1745$ MHz; $\sigma = 1.34$ S/m; $\epsilon_r = 39.43$; $\rho = 1000$ kg/m³

Phantom section: Flat Section

DASY 5 Configuration:

- Probe: EX3DV4 - SN3789; ConvF(7.61, 7.61, 7.61); Calibrated: 2021-10-09
- Sensor-Surface: 1.4mm (Mechanical Surface Detection)
- Electronics: DAE3 Sn414; Calibrated: 2020-12-30
- Phantom: SAM6; Type: SAM; Serial: 1824
- DASY52 52.10.4(1527); SEMCAD X 14.6.14(7483)

Configuration/Body/Area Scan (7x11x1): Measurement grid: dx=15mm, dy=15mm

Maximum value of SAR (measured) = 0.652 W/kg

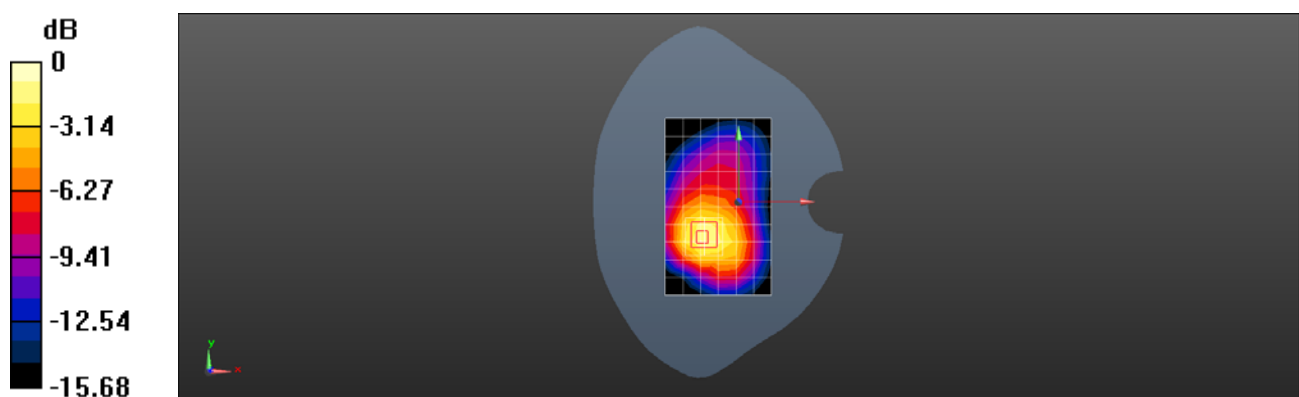
Configuration/Body/Zoom Scan (5x5x7)/Cube 0: Measurement grid: dx=8mm, dy=8mm, dz=5mm

Reference Value = 11.74 V/m; Power Drift = 0.02 dB

Peak SAR (extrapolated) = 0.950 W/kg

SAR(1 g) = 0.583 W/kg; SAR(10 g) = 0.356 W/kg

Maximum value of SAR (measured) = 0.813 W/kg



0 dB = 0.813 W/kg = -0.90 dBW/kg

Test Laboratory: SGS-SAR Lab

SC3218T LTE Band 66 20M QPSK 1RB99 132572CH Back side 10mm Cover Close

DUT: SC3218T; Type: Smart phone; Serial: 358476180003824

Communication System: UID 0, LTE-FDD BW 20MHz (0); Frequency: 1770 MHz; Duty Cycle: 1:1

Medium: HSL1750; Medium parameters used: $f = 1770$ MHz; $\sigma = 1.337$ S/m; $\epsilon_r = 38.639$; $\rho = 1000$ kg/m³

Phantom section: Flat Section

DASY 5 Configuration:

- Probe: EX3DV4 - SN3789; ConvF(7.61, 7.61, 7.61); Calibrated: 2021-10-09
- Sensor-Surface: 1.4mm (Mechanical Surface Detection)
- Electronics: DAE3 Sn414; Calibrated: 2020-12-30
- Phantom: SAM6; Type: SAM; Serial: 1824
- DASY52 52.10.4(1527); SEMCAD X 14.6.14(7483)

Configuration/Body/Area Scan (7x11x1): Measurement grid: dx=15mm, dy=15mm

Maximum value of SAR (measured) = 1.56 W/kg

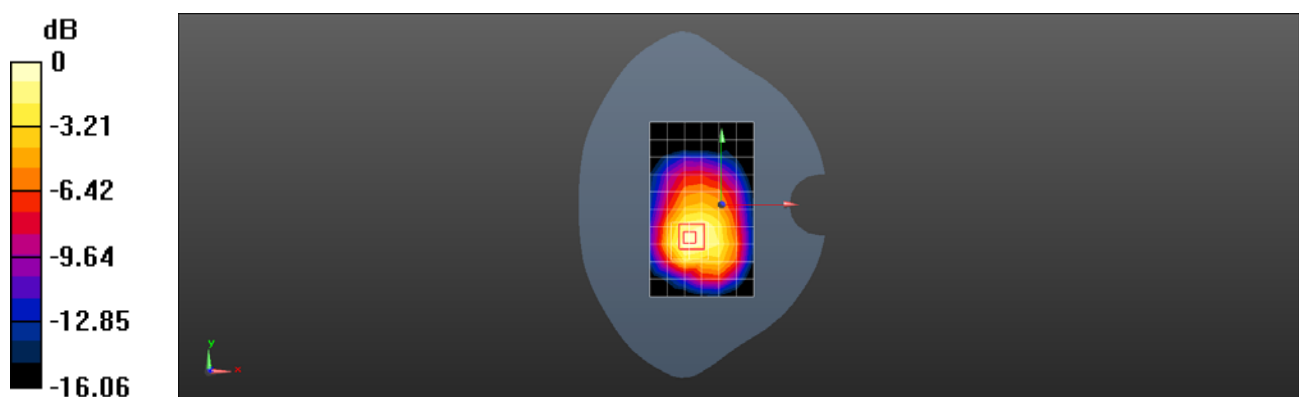
Configuration/Body/Zoom Scan (5x5x7)/Cube 0: Measurement grid: dx=8mm, dy=8mm, dz=5mm

Reference Value = 19.79 V/m; Power Drift = 0.06 dB

Peak SAR (extrapolated) = 1.96 W/kg

SAR(1 g) = 1.18 W/kg; SAR(10 g) = 0.711 W/kg

Maximum value of SAR (measured) = 1.66 W/kg



0 dB = 1.66 W/kg = 2.20 dBW/kg

Test Laboratory: SGS-SAR Lab

SC3218T LTE Band 71 20M QPSK 1RB50 133222CH Left cheek cover open

DUT: SC3218T; Type: Smart phone; Serial: 358476180003964

Communication System: UID 0, LTE-FDD BW 20MHz (0); Frequency: 673 MHz;Duty Cycle: 1:1

Medium: HSL750;Medium parameters used: $f = 673$ MHz; $\sigma = 0.828$ S/m; $\epsilon_r = 43.602$; $\rho = 1000$ kg/m³

Phantom section: Left Section

DASY 5 Configuration:

- Probe: EX3DV4 - SN3789; ConvF(8.9, 8.9, 8.9); Calibrated: 2021-08-12
- Sensor-Surface: 1.4mm (Mechanical Surface Detection)
- Electronics: DAE3 Sn414; Calibrated: 2020-12-30
- Phantom: SAM6; Type: SAM; Serial: 1824
- DASY52 52.10.4(1527); SEMCAD X 14.6.14(7483)

Configuration/Head/Area Scan (7x16x1): Measurement grid: dx=15mm, dy=15mm

Maximum value of SAR (measured) = 0.0709 W/kg

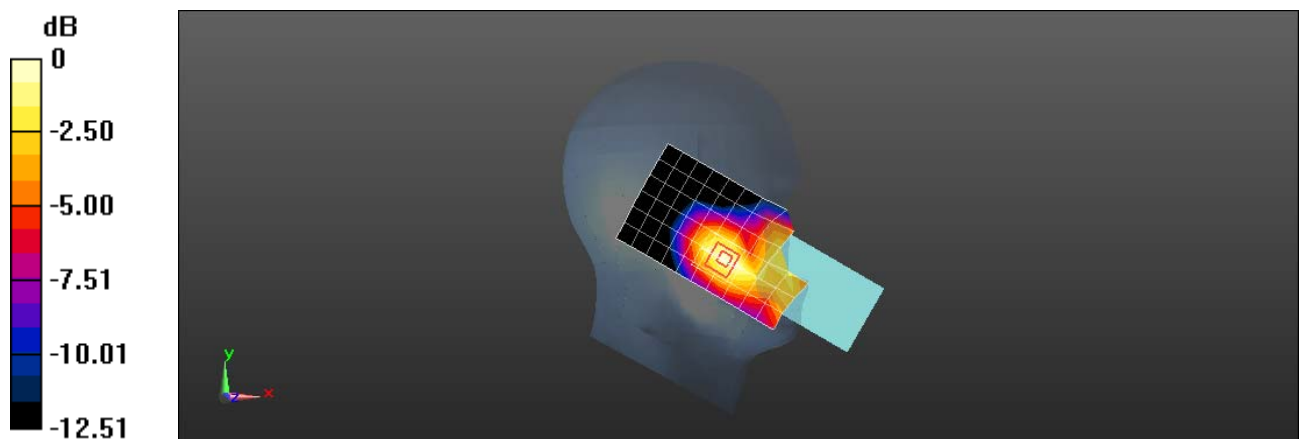
Configuration/Head/Zoom Scan (5x5x7)/Cube 0: Measurement grid: dx=8mm, dy=8mm, dz=5mm

Reference Value = 0.9190 V/m; Power Drift = -0.10 dB

Peak SAR (extrapolated) = 0.0860 W/kg

SAR(1 g) = 0.057 W/kg; SAR(10 g) = 0.038 W/kg

Maximum value of SAR (measured) = 0.0747 W/kg



0 dB = 0.0747 W/kg = -11.27 dBW/kg

Test Laboratory: SGS-SAR Lab

SC3218T LTE Band 71 20M QPSK 1RB50 133222CH Back side 15mm cover open

DUT: SC3218T; Type: Smart phone; Serial: 358476180003964

Communication System: UID 0, LTE-FDD BW 20MHz (0); Frequency: 673 MHz;Duty Cycle: 1:1

Medium: HSL750;Medium parameters used: $f = 673$ MHz; $\sigma = 0.828$ S/m; $\epsilon_r = 43.602$; $\rho = 1000$ kg/m³

Phantom section: Flat Section

DASY 5 Configuration:

- Probe: EX3DV4 - SN3789; ConvF(8.9, 8.9, 8.9); Calibrated: 2021-08-12
- Sensor-Surface: 1.4mm (Mechanical Surface Detection)
- Electronics: DAE3 Sn414; Calibrated: 2020-12-30
- Phantom: SAM6; Type: SAM; Serial: 1824
- DASY52 52.10.4(1527); SEMCAD X 14.6.14(7483)

Configuration/Body/Area Scan (7x16x1): Measurement grid: dx=15mm, dy=15mm

Maximum value of SAR (measured) = 0.312 W/kg

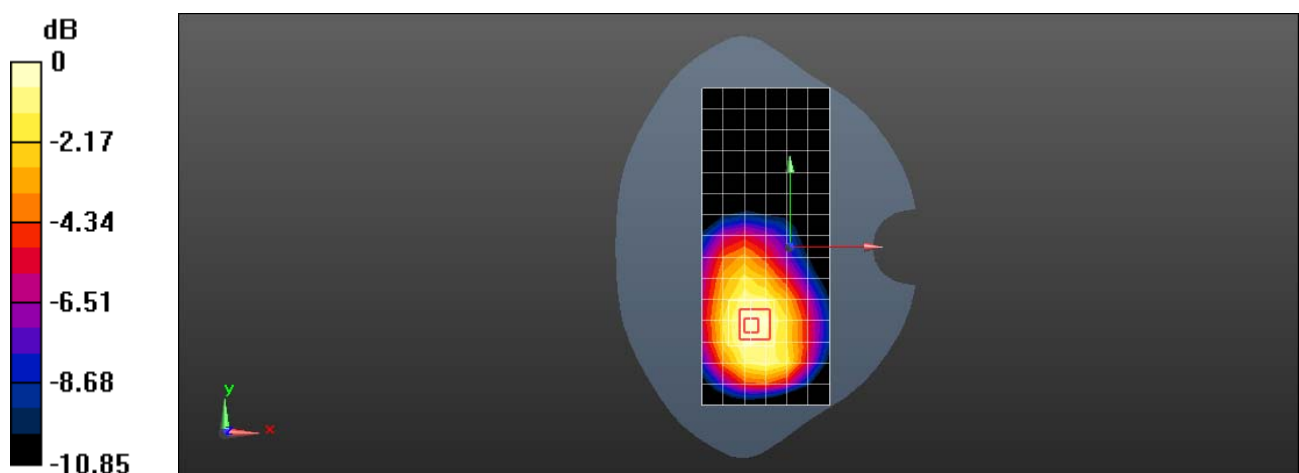
Configuration/Body/Zoom Scan (5x5x7)/Cube 0: Measurement grid: dx=8mm, dy=8mm, dz=5mm

Reference Value = 9.640 V/m; Power Drift = -0.13 dB

Peak SAR (extrapolated) = 0.374 W/kg

SAR(1 g) = 0.251 W/kg; SAR(10 g) = 0.176 W/kg

Maximum value of SAR (measured) = 0.325 W/kg



0 dB = 0.325 W/kg = -4.88 dBW/kg

Test Laboratory: SGS-SAR Lab

SC3218T LTE Band 71 20M QPSK 1RB50 133222CH Back side 10mm cover open

DUT: SC3218T; Type: Smart phone; Serial: 358476180003964

Communication System: UID 0, LTE-FDD BW 20MHz (0); Frequency: 673 MHz;Duty Cycle: 1:1

Medium: HSL750;Medium parameters used: $f = 673$ MHz; $\sigma = 0.828$ S/m; $\epsilon_r = 43.602$; $\rho = 1000$ kg/m³

Phantom section: Flat Section

DASY 5 Configuration:

- Probe: EX3DV4 - SN3789; ConvF(8.9, 8.9, 8.9); Calibrated: 2021-08-12
- Sensor-Surface: 1.4mm (Mechanical Surface Detection)
- Electronics: DAE3 Sn414; Calibrated: 2020-12-30
- Phantom: SAM6; Type: SAM; Serial: 1824
- DASY52 52.10.4(1527); SEMCAD X 14.6.14(7483)

Configuration/Body/Area Scan (7x16x1): Measurement grid: dx=15mm, dy=15mm

Maximum value of SAR (measured) = 0.496 W/kg

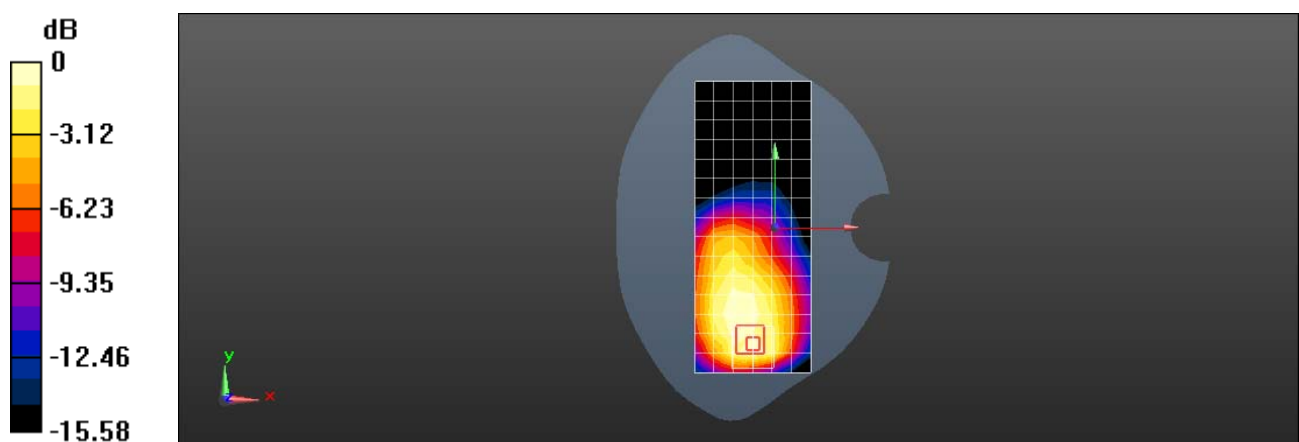
Configuration/Body/Zoom Scan (5x5x7)/Cube 0: Measurement grid: dx=8mm, dy=8mm, dz=5mm

Reference Value = 10.24 V/m; Power Drift = 0.07 dB

Peak SAR (extrapolated) = 0.625 W/kg

SAR(1 g) = 0.340 W/kg; SAR(10 g) = 0.225 W/kg.

Maximum value of SAR (measured) = 0.503 W/kg



0 dB = 0.503 W/kg = -2.98 dBW/kg

Test Laboratory: SGS-SAR Lab

SC3218T LTE Band 71 20M QPSK 1RB50 133222CH Back side 15mm cover close

DUT: SC3218T; Type: Smart phone; Serial: 358476180003964

Communication System: UID 0, LTE-FDD BW 20MHz (0); Frequency: 673 MHz;Duty Cycle: 1:1

Medium: HSL750;Medium parameters used: $f = 673$ MHz; $\sigma = 0.828$ S/m; $\epsilon_r = 43.602$; $\rho = 1000$ kg/m³

Phantom section: Flat Section

DASY 5 Configuration:

- Probe: EX3DV4 - SN3789; ConvF(8.9, 8.9, 8.9); Calibrated: 2021-08-12
- Sensor-Surface: 1.4mm (Mechanical Surface Detection)
- Electronics: DAE3 Sn414; Calibrated: 2020-12-30
- Phantom: SAM6; Type: SAM; Serial: 1824
- DASY52 52.10.4(1527); SEMCAD X 14.6.14(7483)

Configuration/Body/Area Scan (7x10x1): Measurement grid: dx=15mm, dy=15mm

Maximum value of SAR (measured) = 0.344 W/kg

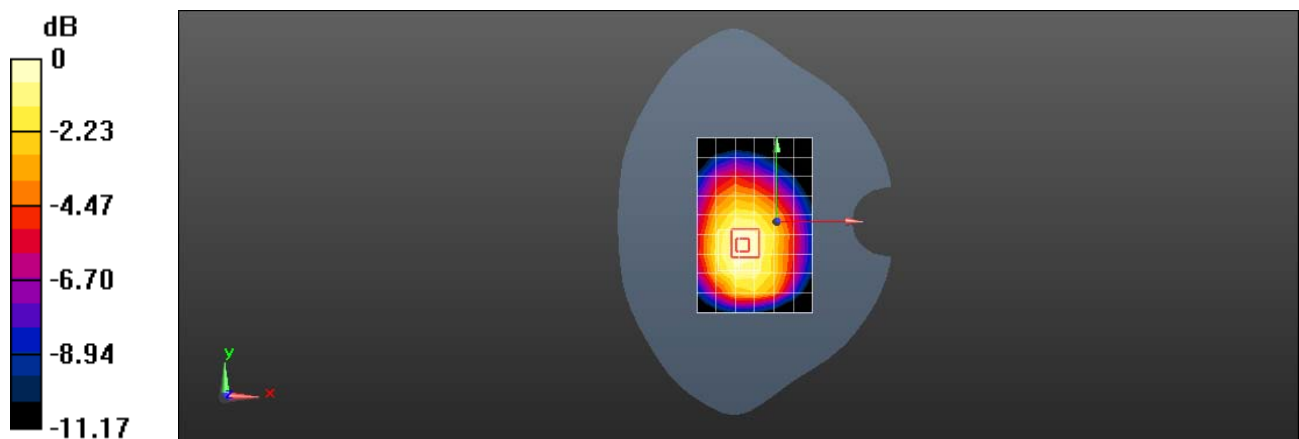
Configuration/Body/Zoom Scan (5x5x7)/Cube 0: Measurement grid: dx=8mm, dy=8mm, dz=5mm

Reference Value = 16.45 V/m; Power Drift = 0.09 dB

Peak SAR (extrapolated) = 0.411 W/kg

SAR(1 g) = 0.270 W/kg; SAR(10 g) = 0.190 W/kg

Maximum value of SAR (measured) = 0.355 W/kg



0 dB = 0.355 W/kg = -4.50 dBW/kg

Test Laboratory: SGS-SAR Lab

SC3218T LTE Band 71 20M QPSK 1RB50 133222CH Back side 10mm cover close

DUT: SC3218T; Type: Smart phone; Serial: 358476180003964

Communication System: UID 0, LTE-FDD BW 20MHz (0); Frequency: 673 MHz;Duty Cycle: 1:1

Medium: HSL750;Medium parameters used: $f = 673$ MHz; $\sigma = 0.828$ S/m; $\epsilon_r = 43.602$; $\rho = 1000$ kg/m³

Phantom section: Flat Section

DASY 5 Configuration:

- Probe: EX3DV4 - SN3789; ConvF(8.9, 8.9, 8.9); Calibrated: 2021-08-12
- Sensor-Surface: 1.4mm (Mechanical Surface Detection)
- Electronics: DAE3 Sn414; Calibrated: 2020-12-30
- Phantom: SAM6; Type: SAM; Serial: 1824
- DASY52 52.10.4(1527); SEMCAD X 14.6.14(7483)

Configuration/Body/Area Scan (7x10x1): Measurement grid: dx=15mm, dy=15mm
Maximum value of SAR (measured) = 0.538 W/kg

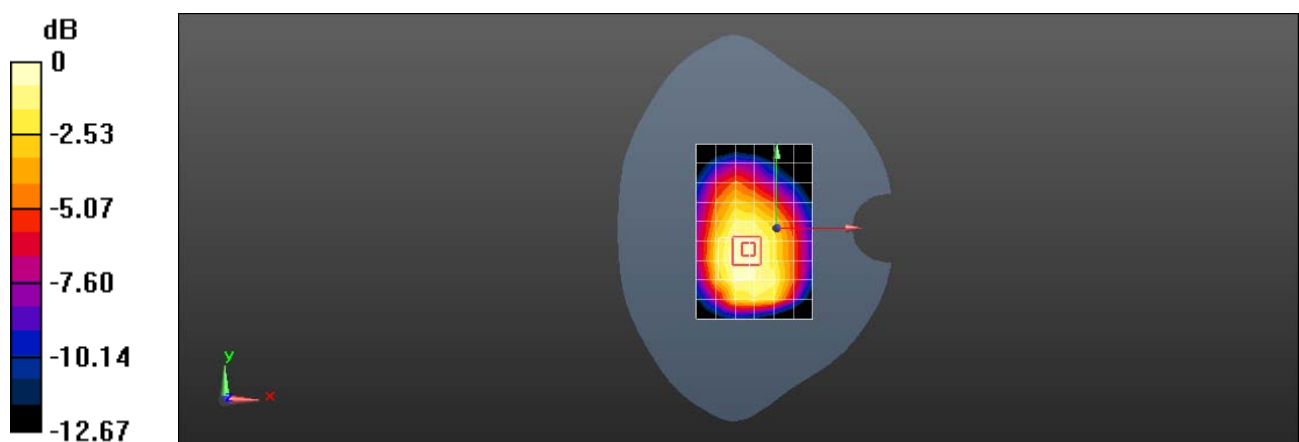
Configuration/Body/Zoom Scan (5x5x7)/Cube 0: Measurement grid: dx=8mm, dy=8mm, dz=5mm

Reference Value = 20.07 V/m; Power Drift = -0.02 dB

Peak SAR (extrapolated) = 0.615 W/kg

SAR(1 g) = 0.411 W/kg; SAR(10 g) = 0.284 W/kg

Maximum value of SAR (measured) = 0.538 W/kg



0 dB = 0.538 W/kg = -2.69 dBW/kg

Test Laboratory: SGS-SAR Lab

SC3218T WIFI 2.4G 802.11b 11CH Left cheek Cover Open

DUT: SC3218T; Type: Smart phone; Serial: 358476180003824

Communication System: UID 0, WI-FI(2.4GHz) (0); Frequency: 2462 MHz;Duty Cycle: 1:1.025

Medium: HSL2450;Medium parameters used: $f = 2462$ MHz; $\sigma = 1.826$ S/m; $\epsilon_r = 38.115$; $\rho = 1000$ kg/m³

Phantom section: Left Section

DASY 5 Configuration:

- Probe: EX3DV4 - SN3789; ConvF(6.88, 6.88, 6.88); Calibrated: 2021-08-12
- Sensor-Surface: 1.4mm (Mechanical Surface Detection)
- Electronics: DAE3 Sn414; Calibrated: 2020-12-30
- Phantom: SAM6; Type: SAM; Serial: 1824
- DASY52 52.10.4(1527); SEMCAD X 14.6.14(7483)

Configuration/Head/Area Scan (9x20x1): Measurement grid: dx=12mm, dy=12mm

Maximum value of SAR (measured) = 0.135 W/kg

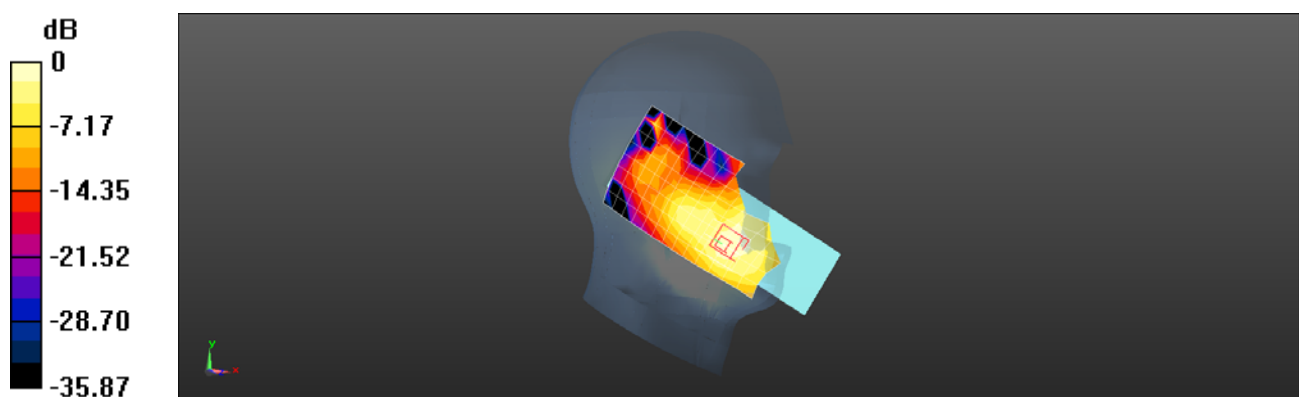
Configuration/Head/Zoom Scan (7x7x7)/Cube 0: Measurement grid: dx=5mm, dy=5mm, dz=5mm

Reference Value = 2.389 V/m; Power Drift = 0.03 dB

Peak SAR (extrapolated) = 0.180 W/kg

SAR(1 g) = 0.092 W/kg; SAR(10 g) = 0.047 W/kg

Maximum value of SAR (measured) = 0.146 W/kg



0 dB = 0.146 W/kg = -8.36 dBW/kg

Test Laboratory: SGS-SAR Lab

SC3218T WIFI 2.4G 802.11b 11CH Back side 15mm Cover Open

DUT: SC3218T; Type: Smart phone; Serial: 358476180003964

Communication System: UID 0, WI-FI(2.4GHz) (0); Frequency: 2462 MHz;Duty Cycle: 1:1.025

Medium: HSL2450;Medium parameters used: $f = 2462$ MHz; $\sigma = 1.826$ S/m; $\epsilon_r = 38.115$; $\rho = 1000$ kg/m³

Phantom section: Flat Section

DASY 5 Configuration:

- Probe: EX3DV4 - SN3789; ConvF(6.88, 6.88, 6.88); Calibrated: 2021-08-12
- Sensor-Surface: 1.4mm (Mechanical Surface Detection)
- Electronics: DAE3 Sn414; Calibrated: 2020-12-30
- Phantom: SAM6; Type: SAM; Serial: 1824
- DASY52 52.10.4(1527); SEMCAD X 14.6.14(7483)

Configuration/Body/Area Scan (8x20x1): Measurement grid: dx=12mm, dy=12mm

Maximum value of SAR (measured) = 0.147 W/kg

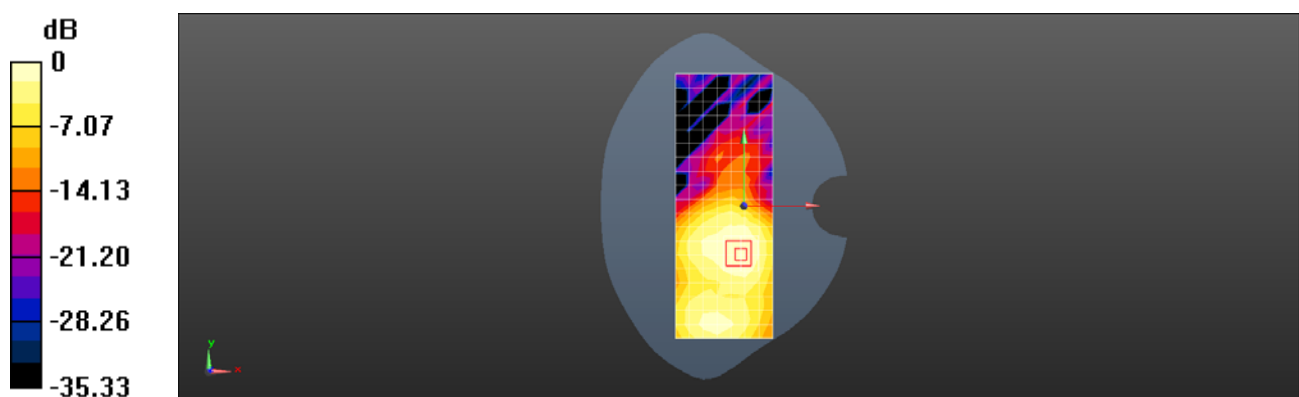
Configuration/Body/Zoom Scan (7x7x7)/Cube 0: Measurement grid: dx=5mm, dy=5mm, dz=5mm

Reference Value = 3.552 V/m; Power Drift = -0.04 dB

Peak SAR (extrapolated) = 0.186 W/kg

SAR(1 g) = 0.097 W/kg; SAR(10 g) = 0.053 W/kg

Maximum value of SAR (measured) = 0.150 W/kg



Test Laboratory: SGS-SAR Lab

SC3218T WIFI 2.4G 802.11b 11CH Left side 10mm Cover Open

DUT: SC3218T; Type: Smart phone; Serial: 358476180003964

Communication System: UID 0, WI-FI(2.4GHz) (0); Frequency: 2462 MHz;Duty Cycle: 1:1.025

Medium: HSL2450;Medium parameters used: $f = 2462$ MHz; $\sigma = 1.826$ S/m; $\epsilon_r = 38.115$; $\rho = 1000$ kg/m³

Phantom section: Flat Section

DASY 5 Configuration:

- Probe: EX3DV4 - SN3789; ConvF(6.88, 6.88, 6.88); Calibrated: 2021-08-12
- Sensor-Surface: 1.4mm (Mechanical Surface Detection)
- Electronics: DAE3 Sn414; Calibrated: 2020-12-30
- Phantom: SAM6; Type: SAM; Serial: 1824
- DASY52 52.10.4(1527); SEMCAD X 14.6.14(7483)

Configuration/Body/Area Scan (6x20x1): Measurement grid: dx=12mm, dy=12mm
Maximum value of SAR (measured) = 0.411 W/kg

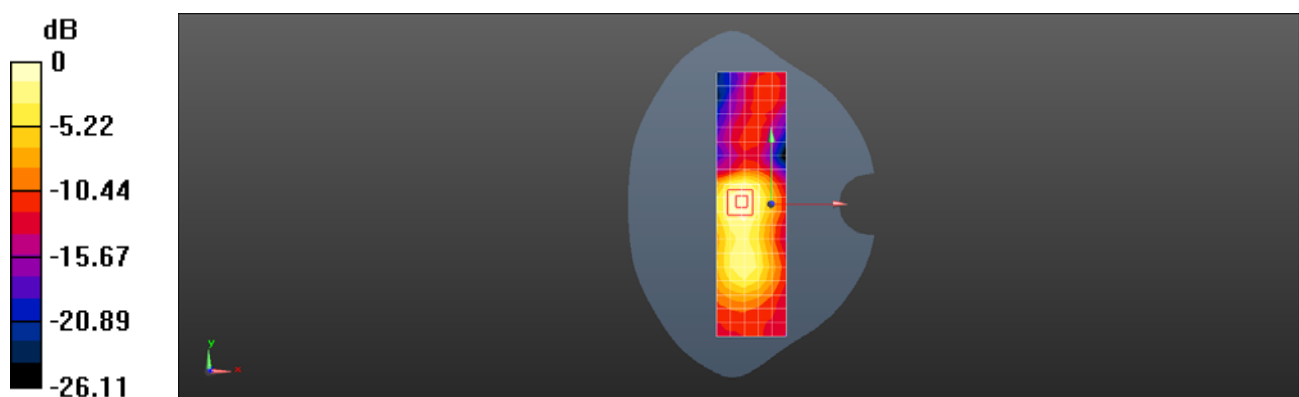
Configuration/Body/Zoom Scan (7x7x7)/Cube 0: Measurement grid: dx=5mm, dy=5mm, dz=5mm

Reference Value = 10.85 V/m; Power Drift = 0.07 dB

Peak SAR (extrapolated) = 0.522 W/kg

SAR(1 g) = 0.260 W/kg; SAR(10 g) = 0.135 W/kg

Maximum value of SAR (measured) = 0.419 W/kg



0 dB = 0.419 W/kg = -3.78 dBW/kg

Test Laboratory: SGS-SAR Lab

SC3218T WIFI 2.4G 802.11b 11CH Back side 15mm Cover Close

DUT: SC3218T; Type: Smart phone; Serial: 358476180003964

Communication System: UID 0, WI-FI(2.4GHz) (0); Frequency: 2462 MHz;Duty Cycle: 1:1.025

Medium: HSL2450;Medium parameters used: $f = 2462$ MHz; $\sigma = 1.826$ S/m; $\epsilon_r = 38.115$; $\rho = 1000$ kg/m³

Phantom section: Flat Section

DASY 5 Configuration:

- Probe: EX3DV4 - SN3789; ConvF(6.88, 6.88, 6.88); Calibrated: 2021-08-12
- Sensor-Surface: 1.4mm (Mechanical Surface Detection)
- Electronics: DAE3 Sn414; Calibrated: 2020-12-30
- Phantom: SAM6; Type: SAM; Serial: 1824
- DASY52 52.10.4(1527); SEMCAD X 14.6.14(7483)

Configuration/Body/Area Scan (9x15x1): Measurement grid: dx=12mm, dy=12mm

Maximum value of SAR (measured) = 0.156 W/kg

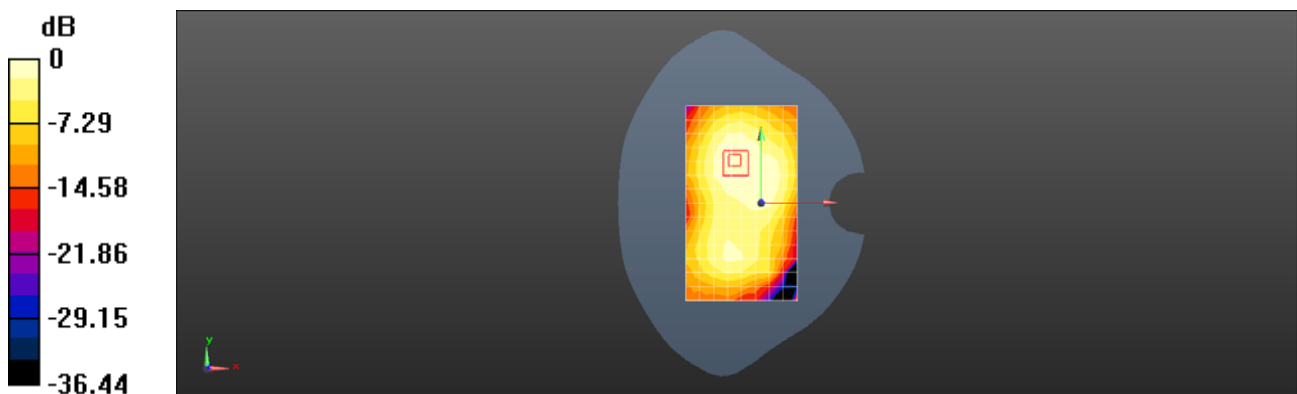
Configuration/Body/Zoom Scan (7x7x7)/Cube 0: Measurement grid: dx=5mm, dy=5mm, dz=5mm

Reference Value = 6.052 V/m; Power Drift = -0.19 dB

Peak SAR (extrapolated) = 0.193 W/kg

SAR(1 g) = 0.104 W/kg; SAR(10 g) = 0.060 W/kg

Maximum value of SAR (measured) = 0.158 W/kg



0 dB = 0.158 W/kg = -8.01 dBW/kg

Test Laboratory: SGS-SAR Lab

SC3218T WIFI 2.4G 802.11b 11CH Back side 10mm Cover Close

DUT: SC3218T; Type: Smart phone; Serial: 358476180003964

Communication System: UID 0, WI-FI(2.4GHz) (0); Frequency: 2462 MHz;Duty Cycle: 1:1.025

Medium: HSL2450;Medium parameters used: $f = 2462$ MHz; $\sigma = 1.826$ S/m; $\epsilon_r = 38.115$; $\rho = 1000$ kg/m³

Phantom section: Flat Section

DASY 5 Configuration:

- Probe: EX3DV4 - SN3789; ConvF(6.88, 6.88, 6.88); Calibrated: 2021-08-12
- Sensor-Surface: 1.4mm (Mechanical Surface Detection)
- Electronics: DAE3 Sn414; Calibrated: 2020-12-30
- Phantom: SAM6; Type: SAM; Serial: 1824
- DASY52 52.10.4(1527); SEMCAD X 14.6.14(7483)

Configuration/Body/Area Scan (9x15x1): Measurement grid: dx=12mm, dy=12mm

Maximum value of SAR (measured) = 0.259 W/kg

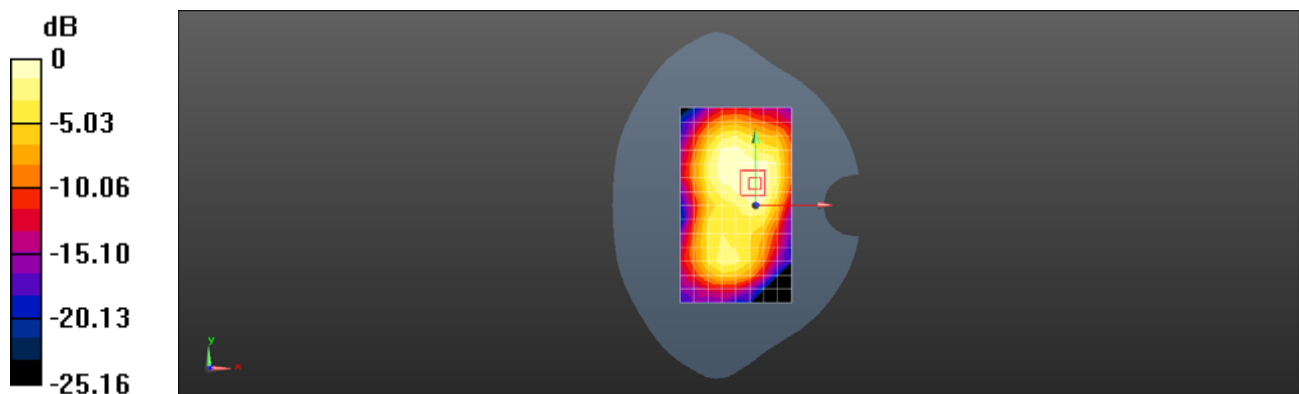
Configuration/Body/Zoom Scan (7x7x7)/Cube 0: Measurement grid: dx=5mm, dy=5mm, dz=5mm

Reference Value = 7.225 V/m; Power Drift = -0.05 dB

Peak SAR (extrapolated) = 0.336 W/kg

SAR(1 g) = 0.174 W/kg; SAR(10 g) = 0.098 W/kg

Maximum value of SAR (measured) = 0.271 W/kg



0 dB = 0.271 W/kg = -5.67 dBW/kg

Test Laboratory: SGS-SAR Lab

SC3218T Bluetooth DH5 39CH Left cheek Cover Open

DUT: SC3218T; Type: Smart phone; Serial: 358476180003964

Communication System: UID 0, Bluetooth (0); Frequency: 2441 MHz; Duty Cycle: 1:1.3

Medium: HSL2450; Medium parameters used: $f = 2441$ MHz; $\sigma = 1.803$ S/m; $\epsilon_r = 38.208$; $\rho = 1000$ kg/m³

Phantom section: Left Section

DASY 5 Configuration:

- Probe: EX3DV4 - SN3789; ConvF(6.88, 6.88, 6.88); Calibrated: 2021-08-12
- Sensor-Surface: 1.4mm (Mechanical Surface Detection)
- Electronics: DAE3 Sn414; Calibrated: 2020-12-30
- Phantom: SAM6; Type: SAM; Serial: 1824
- DASY52 52.10.4(1527); SEMCAD X 14.6.14(7483)

Configuration/Head/Area Scan (8x20x1): Measurement grid: dx=12mm, dy=12mm
Maximum value of SAR (measured) = 0.0361 W/kg

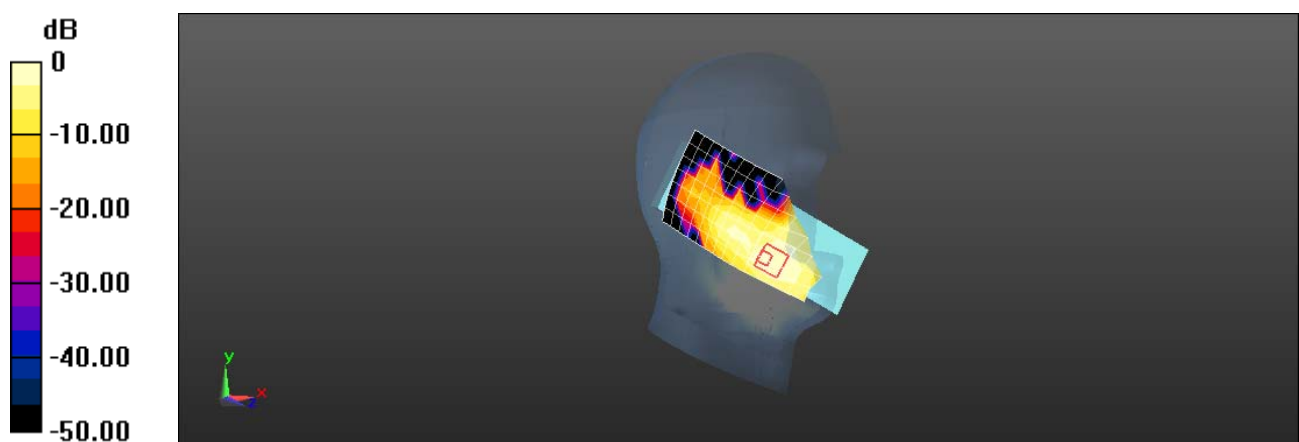
Configuration/Head/Zoom Scan (7x7x7)/Cube 0: Measurement grid: dx=5mm, dy=5mm, dz=5mm

Reference Value = 0.6960 V/m; Power Drift = -0.02 dB

Peak SAR (extrapolated) = 0.0510 W/kg

SAR(1 g) = 0.024 W/kg; SAR(10 g) = 0.011 W/kg

Maximum value of SAR (measured) = 0.0411 W/kg



0 dB = 0.0411 W/kg = -13.86 dBW/kg

Test Laboratory: SGS-SAR Lab

SC3218T Bluetooth DH5 39CH Back side 15mm Cover Open

DUT: SC3218T; Type: Smart phone; Serial: 358476180003964

Communication System: UID 0, Bluetooth (0); Frequency: 2441 MHz; Duty Cycle: 1:1.3

Medium: HSL2450; Medium parameters used: $f = 2441$ MHz; $\sigma = 1.803$ S/m; $\epsilon_r = 38.208$; $\rho = 1000$ kg/m³

Phantom section: Flat Section

DASY 5 Configuration:

- Probe: EX3DV4 - SN3789; ConvF(6.88, 6.88, 6.88); Calibrated: 2021-08-12
- Sensor-Surface: 1.4mm (Mechanical Surface Detection)
- Electronics: DAE3 Sn414; Calibrated: 2020-12-30
- Phantom: SAM6; Type: SAM; Serial: 1824
- DASY52 52.10.4(1527); SEMCAD X 14.6.14(7483)

Configuration/Body/Area Scan (8x20x1): Measurement grid: dx=12mm, dy=12mm
Maximum value of SAR (measured) = 0.0404 W/kg

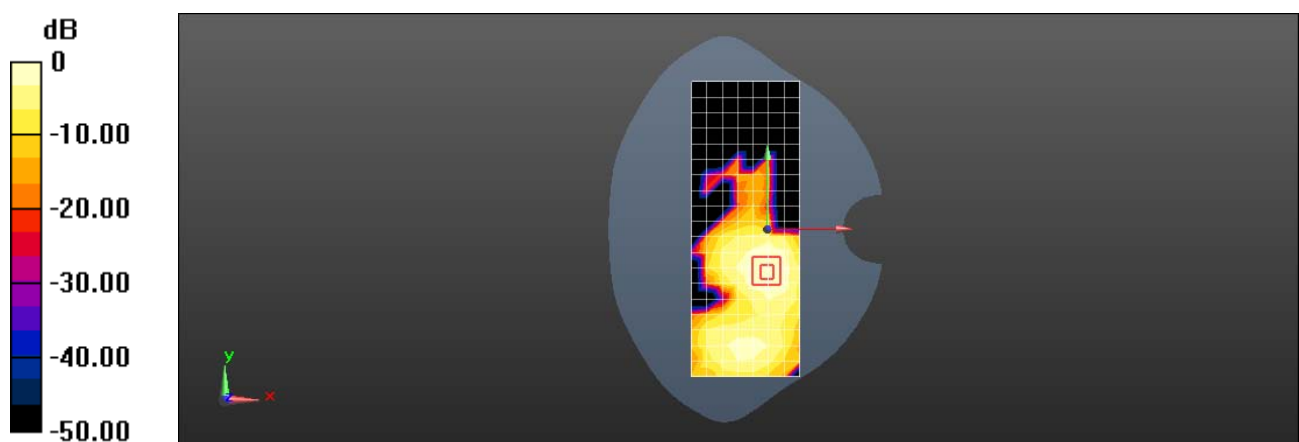
Configuration/Body/Zoom Scan (7x7x7)/Cube 0: Measurement grid: dx=5mm, dy=5mm, dz=5mm

Reference Value = 1.304 V/m; Power Drift = 0.07 dB

Peak SAR (extrapolated) = 0.0510 W/kg

SAR(1 g) = 0.024 W/kg; SAR(10 g) = 0.012 W/kg

Maximum value of SAR (measured) = 0.0395 W/kg



0 dB = 0.0395 W/kg = -14.03 dBW/kg

Test Laboratory: SGS-SAR Lab

SC3218T Bluetooth DH5 39CH Left side 10mm Cover Open

DUT: SC3218T; Type: Smart phone; Serial: 358476180003964

Communication System: UID 0, Bluetooth (0); Frequency: 2441 MHz; Duty Cycle: 1:1.3

Medium: HSL2450; Medium parameters used: $f = 2441$ MHz; $\sigma = 1.803$ S/m; $\epsilon_r = 38.208$; $\rho = 1000$ kg/m³

Phantom section: Flat Section

DASY 5 Configuration:

- Probe: EX3DV4 - SN3789; ConvF(6.88, 6.88, 6.88); Calibrated: 2021-08-12
- Sensor-Surface: 1.4mm (Mechanical Surface Detection)
- Electronics: DAE3 Sn414; Calibrated: 2020-12-30
- Phantom: SAM6; Type: SAM; Serial: 1824
- DASY52 52.10.4(1527); SEMCAD X 14.6.14(7483)

Configuration/Body/Area Scan (5x20x1): Measurement grid: dx=12mm, dy=12mm
Maximum value of SAR (measured) = 0.0732 W/kg

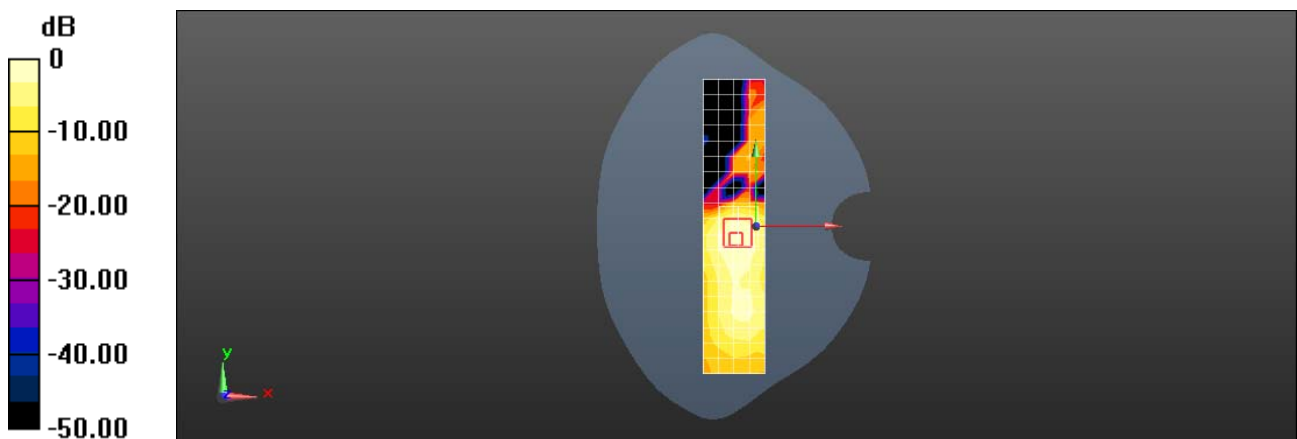
Configuration/Body/Zoom Scan (7x7x7)/Cube 0: Measurement grid: dx=5mm, dy=5mm, dz=5mm

Reference Value = 4.935 V/m; Power Drift = -0.05 dB

Peak SAR (extrapolated) = 0.0990 W/kg

SAR(1 g) = 0.047 W/kg; SAR(10 g) = 0.022 W/kg

Maximum value of SAR (measured) = 0.0781 W/kg



0 dB = 0.0781 W/kg = -11.07 dBW/kg

Test Laboratory: SGS-SAR Lab

SC3218T Bluetooth DH5 39CH Back side 15mm Cover Close

DUT: SC3218T; Type: Smart phone; Serial: 358476180003964

Communication System: UID 0, Bluetooth (0); Frequency: 2441 MHz; Duty Cycle: 1:1.3

Medium: HSL2450; Medium parameters used: $f = 2441$ MHz; $\sigma = 1.803$ S/m; $\epsilon_r = 38.208$; $\rho = 1000$ kg/m³

Phantom section: Flat Section

DASY 5 Configuration:

- Probe: EX3DV4 - SN3789; ConvF(6.88, 6.88, 6.88); Calibrated: 2021-08-12
- Sensor-Surface: 1.4mm (Mechanical Surface Detection)
- Electronics: DAE3 Sn414; Calibrated: 2020-12-30
- Phantom: SAM6; Type: SAM; Serial: 1824
- DASY52 52.10.4(1527); SEMCAD X 14.6.14(7483)

Configuration/Body/Area Scan (8x13x1): Measurement grid: dx=12mm, dy=12mm

Maximum value of SAR (measured) = 0.0241 W/kg

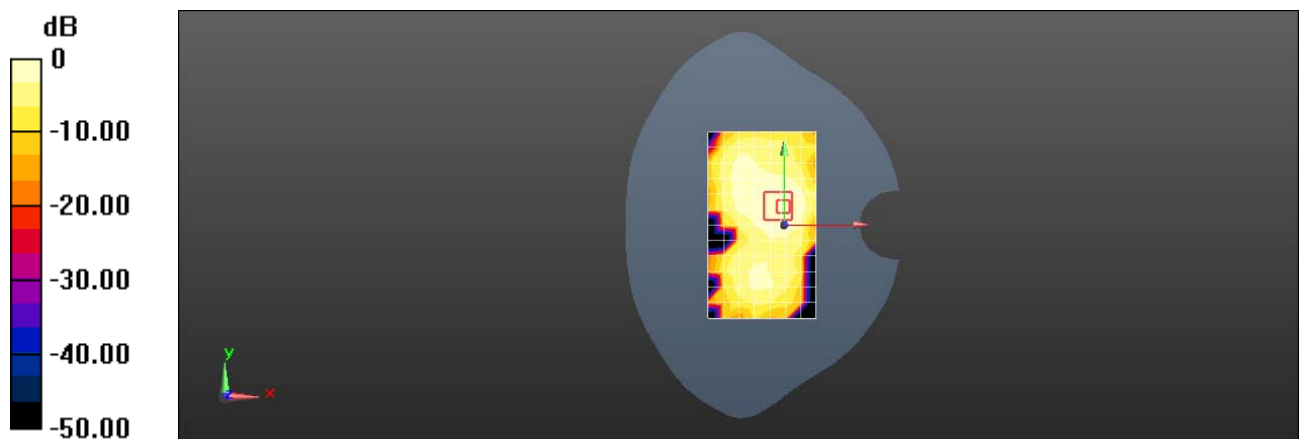
Configuration/Body/Zoom Scan (7x7x7)/Cube 0: Measurement grid: dx=5mm, dy=5mm, dz=5mm

Reference Value = 2.102 V/m; Power Drift = 0.05 dB

Peak SAR (extrapolated) = 0.0310 W/kg

SAR(1 g) = 0.014 W/kg; SAR(10 g) = 0.00657 W/kg

Maximum value of SAR (measured) = 0.0237 W/kg



0 dB = 0.0237 W/kg = -16.25 dBW/kg

Test Laboratory: SGS-SAR Lab

SC3218T Bluetooth DH5 39CH Back side 10mm Cover Close

DUT: SC3218T; Type: Smart phone; Serial: 358476180003964

Communication System: UID 0, Bluetooth (0); Frequency: 2441 MHz; Duty Cycle: 1:1.3

Medium: HSL2450; Medium parameters used: $f = 2441$ MHz; $\sigma = 1.803$ S/m; $\epsilon_r = 38.208$; $\rho = 1000$ kg/m³

Phantom section: Flat Section

DASY 5 Configuration:

- Probe: EX3DV4 - SN3789; ConvF(6.88, 6.88, 6.88); Calibrated: 2021-08-12
- Sensor-Surface: 1.4mm (Mechanical Surface Detection)
- Electronics: DAE3 Sn414; Calibrated: 2020-12-30
- Phantom: SAM6; Type: SAM; Serial: 1824
- DASY52 52.10.4(1527); SEMCAD X 14.6.14(7483)

Configuration/Body/Area Scan (8x13x1): Measurement grid: dx=12mm, dy=12mm
Maximum value of SAR (measured) = 0.0420 W/kg

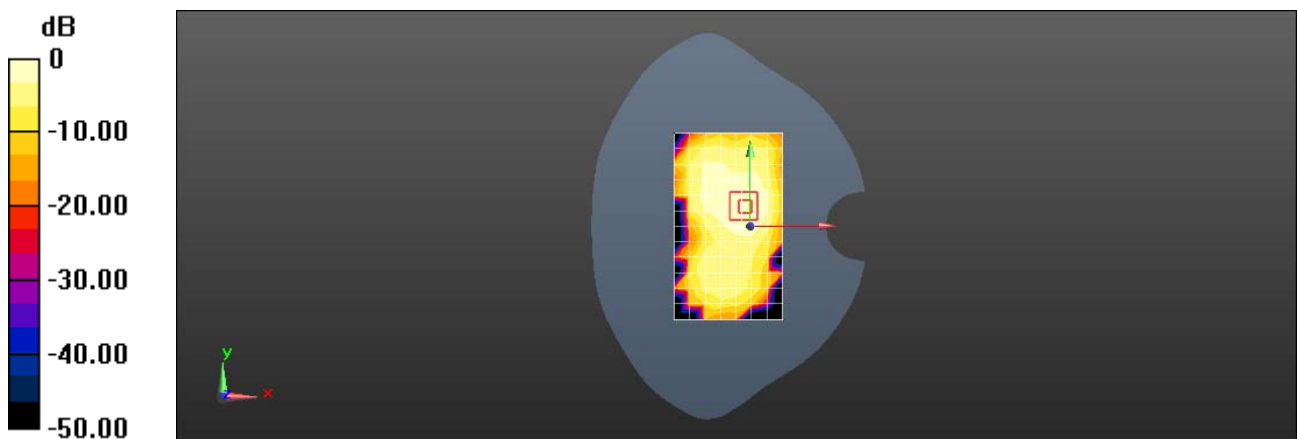
Configuration/Body/Zoom Scan (7x7x7)/Cube 0: Measurement grid: dx=5mm, dy=5mm, dz=5mm

Reference Value = 2.887 V/m; Power Drift = 0.09 dB

Peak SAR (extrapolated) = 0.0530 W/kg

SAR(1 g) = 0.026 W/kg; SAR(10 g) = 0.014 W/kg

Maximum value of SAR (measured) = 0.0415 W/kg



0 dB = 0.0415 W/kg = -13.82 dBW/kg