

Internal Photos

FCC ID: 2ALZM-SC3218T

EUT Constructional Details (EUT Photos)

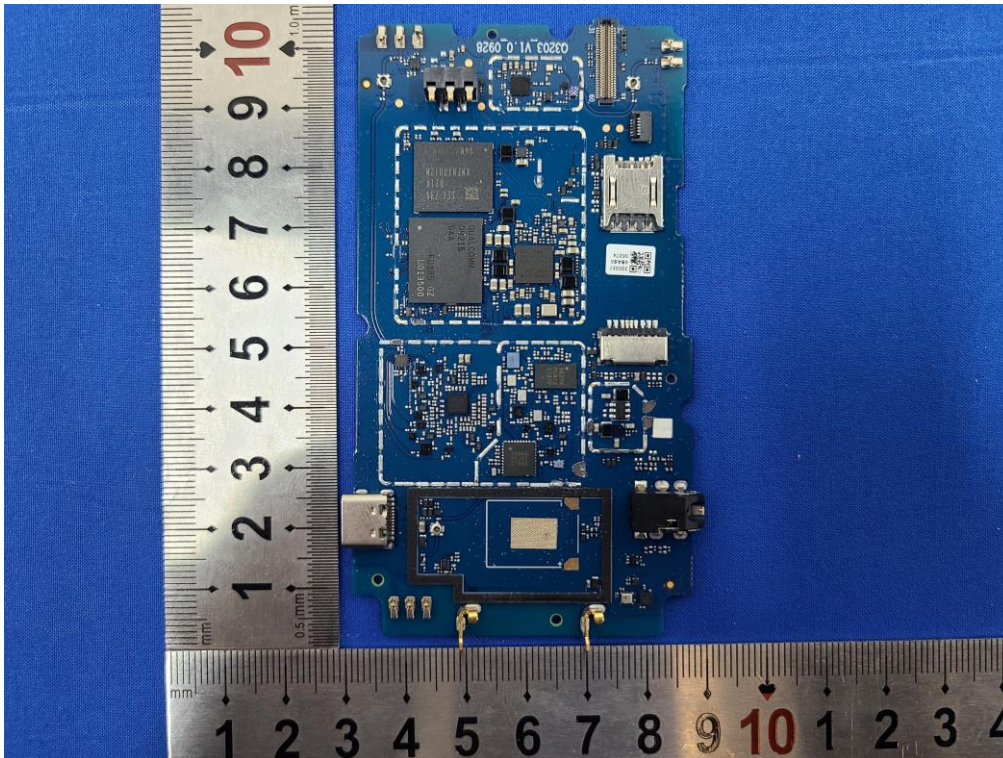
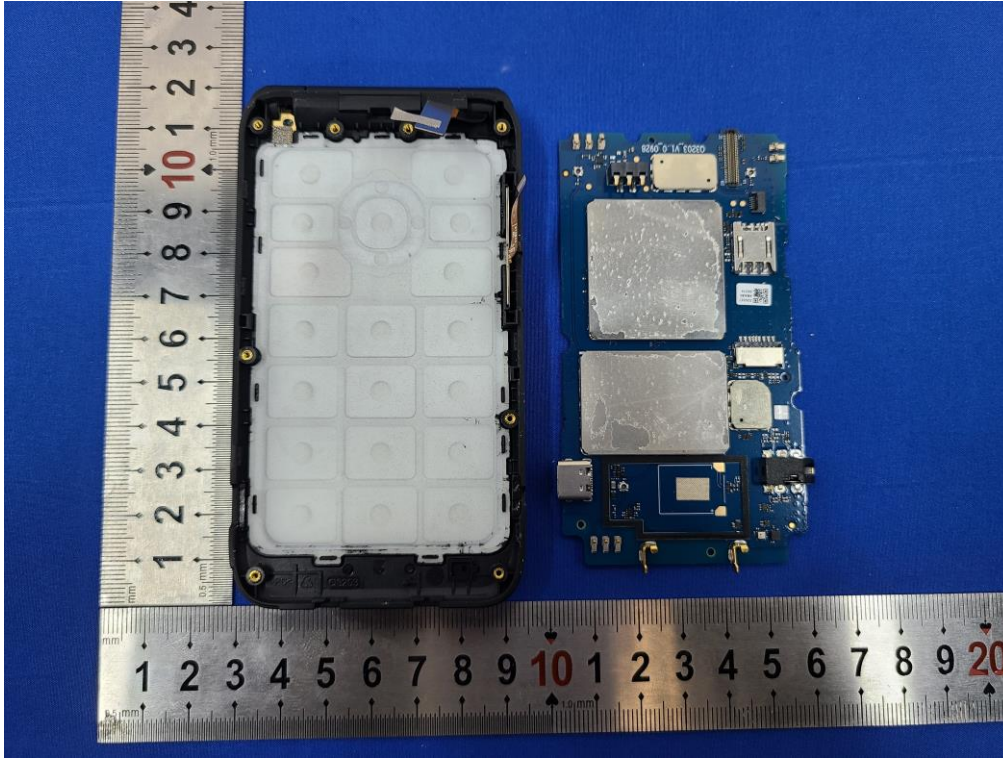


Unless otherwise agreed in writing, this document is issued by the Company subject to its General Conditions of Service printed overleaf, available on request or accessible at <http://www.sgs.com/en/Terms-and-Conditions.aspx> and, for electronic format documents, subject to Terms and Conditions for Electronic Documents at <http://www.sgs.com/en/Terms-and-Conditions/Terms-e-Documents.aspx>. Attention is drawn to the limitation of liability, indemnification and jurisdiction issues defined therein. Any holder of this document is advised that information contained hereon reflects the Company's findings at the time of its intervention only and within the limits of Client's instructions, if any. The Company's sole responsibility is to its Client and this document does not exonerate parties to a transaction from exercising all their rights and obligations under the transaction documents. This document cannot be reproduced except in full, without prior written approval of the Company. Any unauthorized alteration, forgery or falsification of the content or appearance of this document is unlawful and offenders may be prosecuted to the fullest extent of the law. Unless otherwise stated the results shown in this test report refer only to the sample(s) tested and such sample(s) are retained for 30 days only.

Attention: To check the authenticity of testing /inspection report & certificate, please contact us at telephone: (86-755) 8307 1443, or email: CN.Doccheck@sgs.com

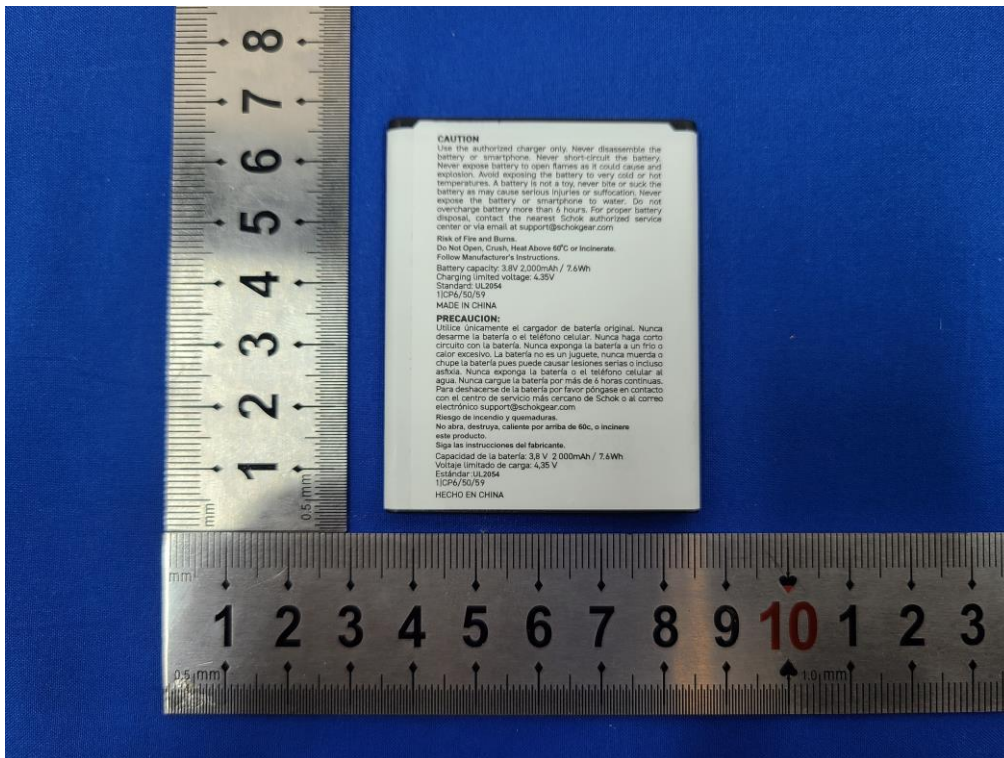
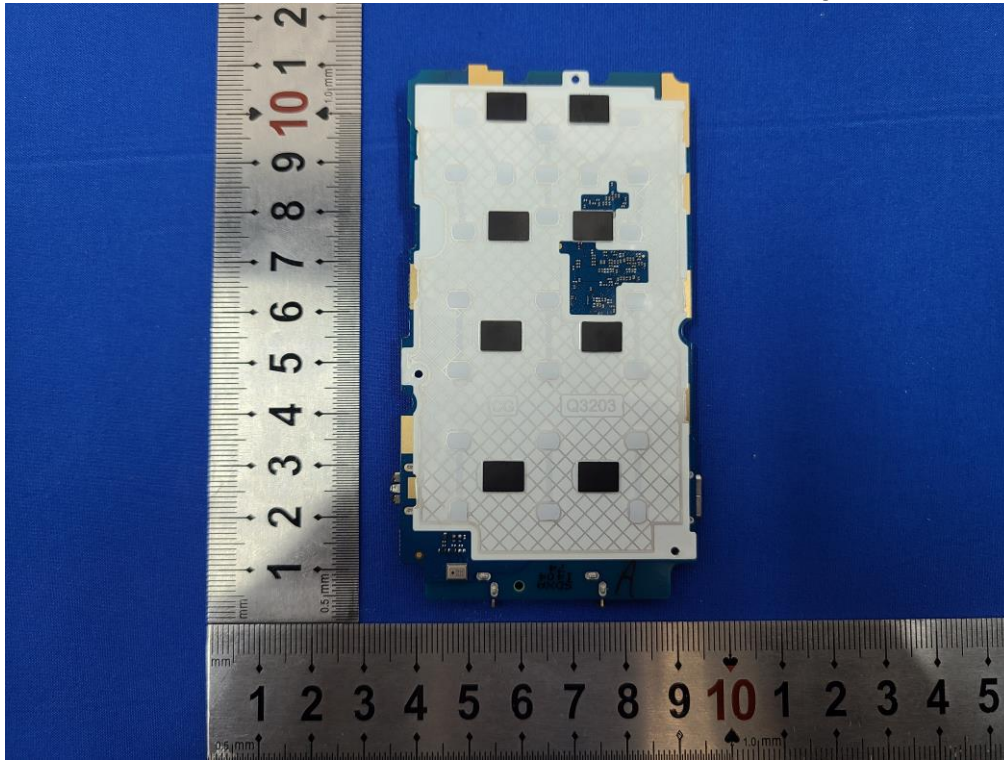
South of No. 6 Plant, No. 1, Runsheng Road, Suzhou Industrial Park, Suzhou Area, China (Jiangsu) Pilot Free Trade Zone 215000 t (86-512) 62992980 www.sgs.com.cn
中国·苏州·中国(江苏)自由贸易试验区苏州片区苏州工业园区润胜路1号的6号厂房南部 邮编: 215000 t (86-512) 62992980 sgs.china@sgs.com





Unless otherwise agreed in writing, this document is issued by the Company subject to its General Conditions of Service printed overleaf, available on request or accessible at <http://www.sgs.com/en/Terms-and-Conditions.aspx> and, for electronic format documents, subject to Terms and Conditions for Electronic Documents at <http://www.sgs.com/en/Terms-and-Conditions/Terms-e-Document.aspx>. Attention is drawn to the limitation of liability, indemnification and jurisdiction issues defined therein. Any holder of this document is advised that information contained hereon reflects the Company's findings at the time of its intervention only and within the limits of Client's instructions, if any. The Company's sole responsibility is to its Client and this document does not exonerate parties to a transaction from exercising all their rights and obligations under the transaction documents. This document cannot be reproduced except in full, without prior written approval of the Company. Any unauthorized alteration, forgery or falsification of the content or appearance of this document is unlawful and offenders may be prosecuted to the fullest extent of the law. Unless otherwise stated the results shown in this test report refer only to the sample(s) tested and such sample(s) are retained for 30 days only.

Attention: To check the authenticity of testing /inspection report & certificate, please contact us at telephone: (86-755) 8307 1443, or email: CN.Doccheck@sgs.com



CAUTION
 Use the authorized charger only. Never disassemble the battery or smartphone. Never short-circuit the battery. Never expose battery to open flames as it could cause fire and explosion. Avoid exposing the battery to very cold or hot temperatures. A battery is not a toy, never bite or suck the battery as they cause serious injuries or suffocation. Never expose the battery or smartphone to water. Do not overcharge battery more than 6 hours. For proper battery disposal, contact the nearest Schok authorized service center or via email at support@schokgear.com

Risk of Fire and Burns.
 Do Not Open, Crush, Heat Above 60°C or Incinerate. Follow Manufacturer's Instructions.

Battery capacity: 3.8V 2,000mAh / 7.6Wh
 Charging limited voltage: 4.35V
 Standard: UL2054
 ITCPL/50/59
 MADE IN CHINA

PRECAUCION:
 Utilice únicamente el cargador de batería original. Nunca desarme la batería o el teléfono celular. Nunca haga como circuito con la batería. Nunca exponga la batería a un frío o calor excesivo. La batería no es un juguete, nunca muerda o chupe la batería pues puede causar lesiones serias o incluso asfixia. Nunca exponga la batería o el teléfono celular al agua. Nunca cargue la batería por más de 6 horas continuas. Para deshacerse de la batería por favor póngase en contacto con el centro de servicio más cercano de Schok o al correo electrónico support@schokgear.com

Riesgo de incendio y quemaduras.
 No abra, destruya, caliente por arriba de 60c, o incinere este producto.
 Siga las instrucciones del fabricante.
 Capacidad de la batería: 3.8 V 2,000mAh / 7.6Wh
 Voltaje limitado de carga: 4.35 V
 Estándar: UL2054
 ITCPL/50/59
 HECHO EN CHINA



Unless otherwise agreed in writing, this document is issued by the Company subject to its General Conditions of Service printed overleaf, available on request or accessible at <http://www.sgs.com/en/Terms-and-Conditions.aspx> and, for electronic format documents, subject to Terms and Conditions for Electronic Documents at <http://www.sgs.com/en/Terms-and-Conditions/Terms-e-Documents.aspx>. Attention is drawn to the limitation of liability, indemnification and jurisdiction issues defined therein. Any holder of this document is advised that information contained hereon reflects the Company's findings at the time of its intervention only and within the limits of Client's instructions, if any. The Company's sole responsibility is to its Client and this document does not exonerate parties to a transaction from exercising all their rights and obligations under the transaction documents. This document cannot be reproduced except in full, without prior written approval of the Company. Any unauthorized alteration, forgery or falsification of the content or appearance of this document is unlawful and offenders may be prosecuted to the fullest extent of the law. Unless otherwise stated the results shown in this test report refer only to the sample(s) tested and such sample(s) are retained for 30 days only.

Attention: To check the authenticity of testing /inspection report & certificate, please contact us at telephone: (86-755) 8307 1443, or email: CN.Doccheck@sgs.com