

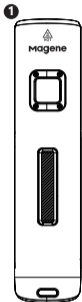


AT Series Smart Bike Headlight



For first time use,
Please unlock the mode first
Long press the button for 3 seconds to unlock

Package Contents



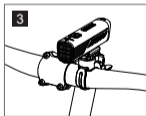
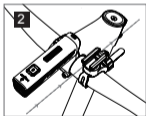
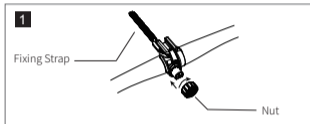
前灯



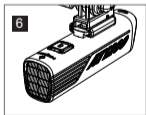
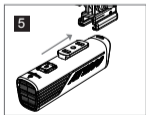
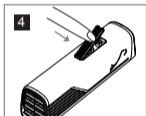
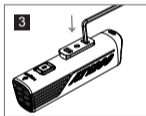
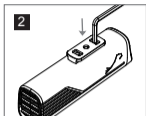
Installation

This product has two kinds of installation methods:
UP mounting and Down mounting.

UP mounting



Down mounting.



Light Mode

Model	Light Mode	Bright(lm)	Mode	Duration (hrs)
AT1200	Low Bright	400	Stable	6
	Medium Bright	800	Stable	3
	High Bright	1200	Stable	2
	Daytime Flash	600/0	Flash	18.8
	Night Flash	200/0	Flash	85
	Breathing	300/50	Breath	13.5

Model	Light Mode	Bright(lm)	Mode	Duration (hrs)
AT1600	Low Bright	400	Stable	6
	Medium Bright	800	Stable	3
	High Bright	1600	Stable	1.5
	Daytime Flash	600/0	Flash	18.8
	Night Flash	200/0	Flash	85
	Breathing	300/50	Breath	13.5

*Endurance data was measured in accordance with ANSI/NEMA FL 1-2009 standards. The test was conducted under indoor temperature of 25°C and wind speed of 25KM/H conditions, the actual range time will vary with temperature and ventilation conditions.



Magene AT Series Smart Bike Headlight

Magene

Model	P0108307
Nominal Voltage	5V
Nominal Capacity	5000mAh
Ref.Weight	162g
Manufacturer	Qingdao Magene Intelligence Technology Co., Ltd.
Address	No.126 Shuyu Road, Chengyang District, Qingdao, China
EC REP	WSJ Product LTD (for authorities only)
	Eschborner Landstraße 42-50
	60489 Frankfurt am Main, Hessen, Germany
UK REP	UK Authorised Representative:
	WSJ Product LTD.
	Unit 1 Alsop Arcade, brownlow hill, Liverpool, L3 5TX, GB



PAP 22
RACCOLTA CARTA

Instructions

Basic controls

- In order to prevent accidental contact during transportation and other stages, AT series lights are in lock mode before first use, long press the power button for 3 seconds to release the lock.
- Lights continue to broadcast in the off state, and the broadcast is off in the locked state.
- Long press the power button for 1 second to switch on and off, click the power button to switch modes, the default order is: low light-medium light-high light-daytime blinking-nighttime blinking-breathing
- Mode memory: after power on, it will be the mode before the last power off.

Status	LED	Meaning
Indicator lights up for 3 seconds after turning on the light to indicate the current power level	Green light	Battery level>60%
	Yellow light	Battery level30%-60%
	Red light	Battery level10%-30%
	Red light flashing	Battery level<10%
Charging	Green light flashing	Charging
	Green light	Full charge
Low battery indicator	Red light flashing	Battery level<10%

Temperature control protection

AT series lights are equipped with an intelligent temperature control system, which automatically reduces the brightness in case of overheating to protect the equipment and prolong its service life.

Reverse Charging

AT series lights are able to charge other devices (e.g. Bike computer, phones, etc.).

Intelligent Connection

AT series lights support ANT+ standard protocol, through the connection of the bike computer, can realize the intelligent control of the lights in the ride, open SOS mode (some code meter support) and other functions.

Customized Mode

AT series lights can be connected with "Naughty Deer Sports" APP through Bluetooth to realize customized light modes (10 kinds), set up light automation, upgrade firmware and other functions.



Performance Parameters

Product Size	111.4*26.1*34.1mm	Product Weight	162g
Model	P0108307	Waterproof	IPX7
Maximum Brightness	1200lm/1600lm	Maximum Input	DC 5V,2A
Battery	5000mAh	Maximum Output	DC 5V,2A



Warning

Failure to observe the following potential hazards may result in serious injury or even fatal accidents.

Attention Warning

- If the device is used properly, it can enhance your cycling experience. However, improper use may result in distractions and serious personal injury.
- Only use the device to quickly obtain information. Always pay attention to your surroundings and do not allow the device to distract you for extended periods of time.
- Overly focusing on the device may cause you to overlook obstacles or dangers. Your use of this device is at your own risk, so please use it reasonably and cautiously.

Cycling Warning

- Please maintain your best attention and judgment to cycle in the safest way possible.
- Make sure your bike and all its components are well maintained and that all parts are installed correctly.

Battery Warning

Failure to observe the following potential hazards may result in serious injury or even fatal accidents.

This product uses a rechargeable lithium battery. Failure to comply with the following guidelines may shorten the battery life inside the device or lead to equipment damage, fire, chemical burns, electrolyte leakage, and risk of injury.

- Do not disassemble, modify, pierce, squeeze or damage the battery to prevent danger.
- Do not expose the device and battery to flames, explosions, or other hazards.
- Do not store the device in a high-temperature environment, such as a dryer or a car parked under direct sunlight.
- Do not immerse the battery in water or other liquids.
- Do not perform frequent excessive charging operations.
- Do not charge the battery near a source of heat or under extreme hot conditions.
- Strictly follow the charging requirements to prevent danger caused by excessive current.
- If the product is not in use for a long time, it is recommended to fully charge the battery for storage to extend its life span.

WARRANTY CLAUSE

Three guarantees include:

- The product has passed strict quality inspection. According to the warranty card instructions, we provide free repairs for failures caused by product quality problems during the warranty period under normal use.
- Within 7 days from the date of purchase (inclusive), unconditional return and exchange for quality problems with the product itself.
- The warranty period for the product host is 12 months from the date of purchase, and 3 months for other accessories, based on the warranty time of the electronic warranty card. In case of any conflict with local laws and regulations, local laws and regulations shall prevail.
- The product warranty repair requires the use of original packaging and designated logistics transportation. Otherwise, the user will bear the transportation costs or losses caused by transportation.

The following situations are not within the scope of the warranty:

- Exceeding the warranty period.
- Any damage caused by improper use, maintenance, and storage.
- Product damage caused by not following the instruction manual or installation instructions.
- Unauthorized repairs, misuse, collisions, negligence, abuse, liquid entry, accidents, modifications, unclear use of non-product accessories.
- No electronic warranty card or valid invoice.
- The product number or code on the electronic warranty card does not match the physical product.
- Failures and damage caused by factors other than the product's own design, manufacturing, and quality issues.
- Wear and tear caused by normal use, dirt such as scratches, and damage caused by human factors such as contact with chemicals, sharp objects, falling, and squeezing.
- Damage caused by force majeure.

Product after-sales service period:

- Our company provides lifetime after-sales service for products.
- After the product warranty period has expired, only the cost fee will be charged for product repairs, and only the labor and parts cost will be charged for human damage repairs.

Please leave accurate name and contact information when sending your device for repairs, so that the repair center can contact you promptly for pickup.

Our company reserves the right to modify and interpret the above content.

FCC STATEMENT

This device complies with part 15 of the FCC rules. Operation is subject to the following two conditions:

- (1) This device may not cause harmful interference.
- (2) This device must accept any interference received, including interference that may cause undesired operation.

NOTE: The manufacturer is not responsible for any radio or TV interference caused by unauthorized modifications or changes to this equipment. Such modifications or changes could void the user's authority to operate the equipment.

This equipment has been tested and found to comply with the limits for a Class B digital device, pursuant to part 15 of the FCC Rules. These limits are designed to provide reasonable protection against harmful interference in a residential installation. This equipment generates uses and can radiate radio frequency energy and, if not installed and used in accordance with the instructions, may cause harmful interference to radio communications. However, there is no guarantee that interference will not occur in a particular installation. If this equipment does cause harmful interference to radio or television reception, which can be determined by turning the equipment off and on, the user is encouraged to try to correct the interference by one or more of the following measures.

- Reorient or relocate the receiving antenna.
- Increase the separation between the equipment and receiver.
- Connect the equipment into an outlet on a circuit different from that to which the receiver is connected.
- Consult the dealer or an experienced radio/TV technician for help.

RF warning:

The device has been evaluated to meet general RF exposure requirement. The device can be used in portable exposure condition without restriction.

CE DECLARATION OF CONFORMITY

Hereby, Qingdao Magene Intelligence Technology Co.,Ltd. declares that this product is in compliance with the Directive 2014/53/EU. The full text of the EU declaration of conformity is available at the following internet address: <https://magenefitness.com/certificate.html>

UK DECLARATION OF CONFORMITY

Hereby, Qingdao Magene Intelligence Technology Co., Ltd. declares that this product is in compliance with The Radio Equipment Regulations 2017. The full text of the declaration of conformity is available at the following internet address: <https://magenefitness.com/certificate.html>

RECYCLING/LICENSES

WEEE(Waste Electronic Electric Equipment) European Directive 2012/19/EU



This symbol on the product or on its packaging indicates that this product must not be disposed of with your household waste. Instead, it is your responsibility to dispose of your waste equipment by handing it over to a designated collection point for the recycling of waste electrical and electronic equipment. The separate collection and recycling of your waste equipment at the time of disposal will help to conserve natural resources and ensure that it is recycled in a manner that protects human health and the environment. For more information about where you can drop off your waste equipment for recycling, please contact your local city office, your household waste disposal service or the shop where you purchased the product.

Batteries



In accordance with the Battery Directive, used batteries should not be disposed of in the domestic waste. Dispose your batteries in the collection containers specific for this purpose in retail stores.

Qingdao Magene Intelligence Technology Co.,Ltd.

No.126 Shuyu Road, Chengyang District, Qingdao, China

Website: www.magene.com

Contact: support@magene.com

Made in China