

# Antena Test Report



顺达成科技



专业的4G/3G/GPS/WIFI等天线方案设计及供应商

Customer Name: Durban

Customer Project Name: DB95

Band: WIFI2.4G

Version: A

Date: 2024-5-14

Manufacturer: Shenzhen ShunDaCheng technology Co., LTD

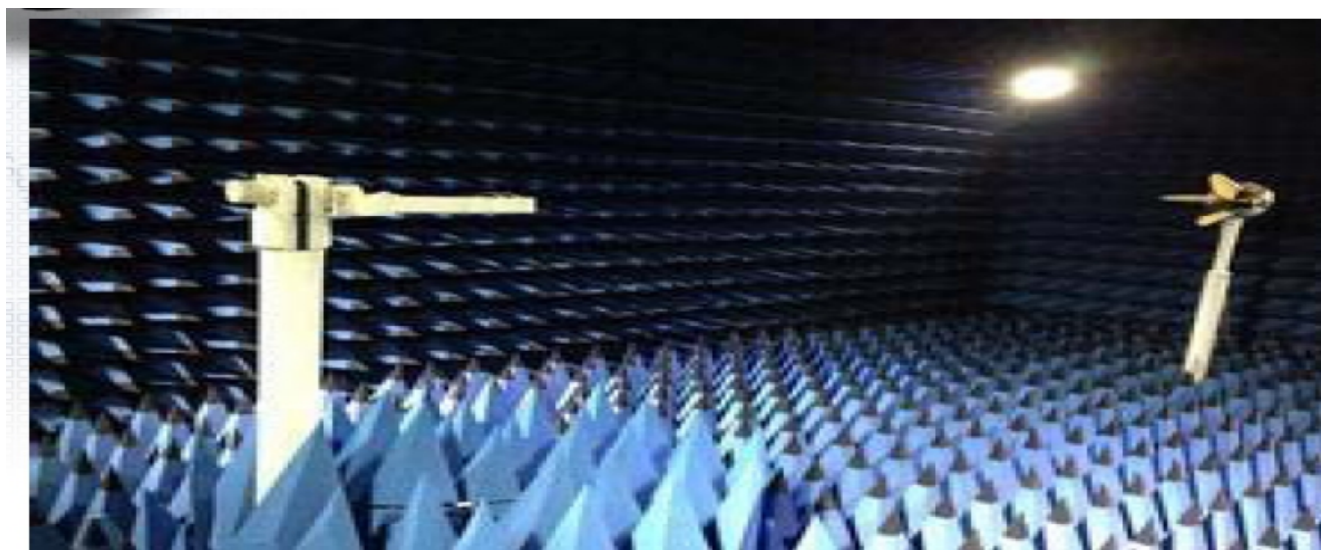
Address: 401A, Xinfu Industrial Park, Zhongqing Road, Heping Community, Fuhai Street, Baoan District, Shenzhen

# Test system



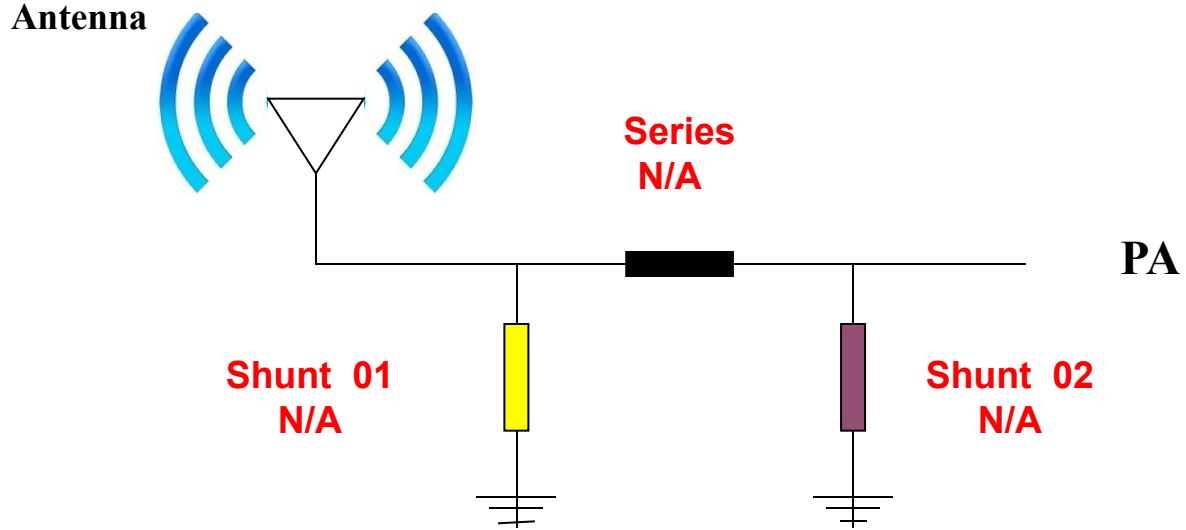
顺达成科技

Sequence Number	Test Item	equipment
S parameter	VSWR	Agilent 5071C & Agilent 5062A
OTA Test	TRP&TIS	Agilent 8960 E5515C& Agilent 4438C&CMW500 &CMW270 ETS&SATIMO
Gain & Efficiency	Gain & Efficiency	ETS&SATIMO Agilent 5071C



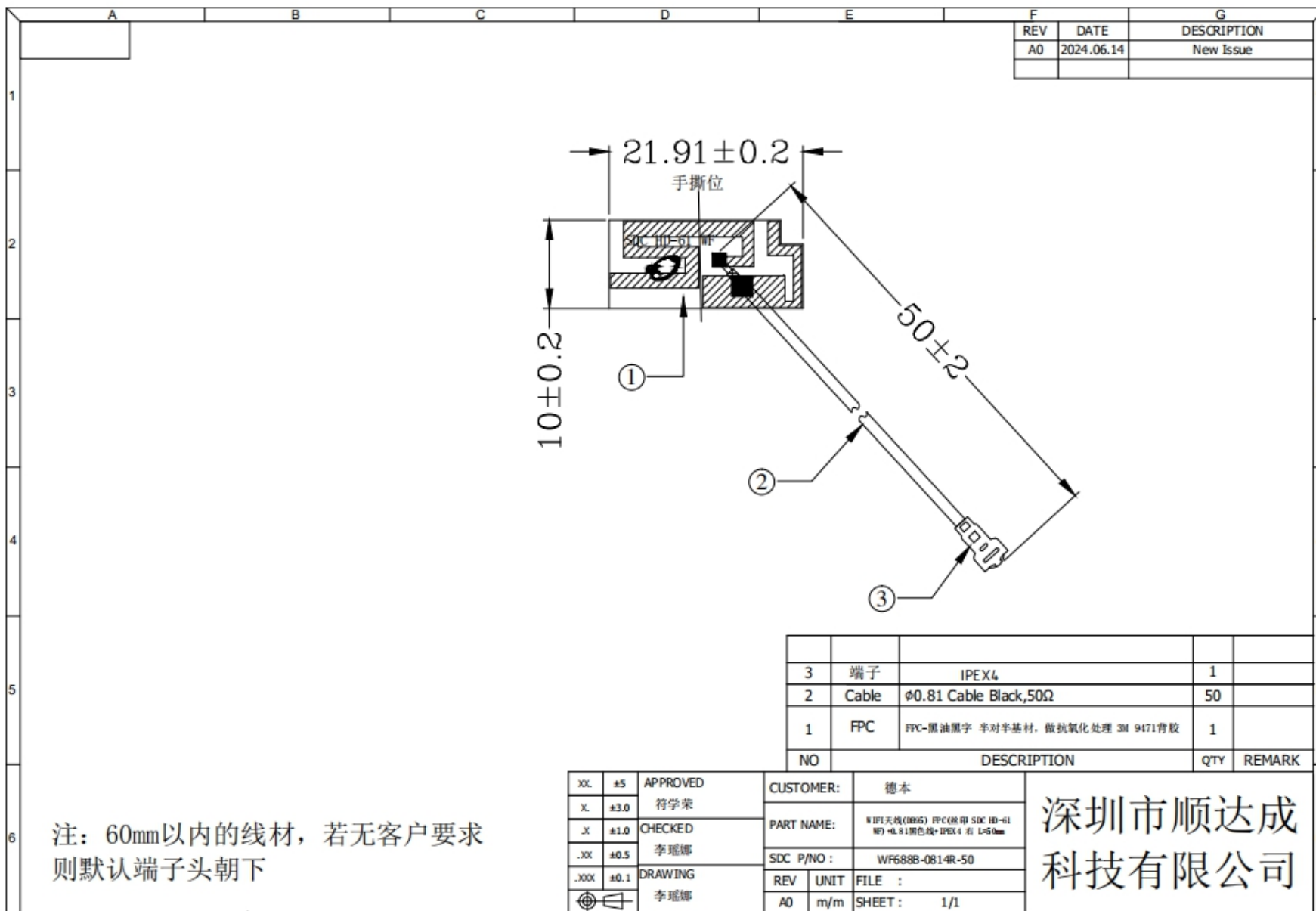
# No modifications made to the motherboard circuit

## Antenna Matching Network



Location	Description	Vendor
Shunt 01	N/A	N/A
Series	N/A	N/A
Shunt 02	N/A	N/A

# Drawing or Product Image



REV	DATE	DESCRIPTION
A0	2024.06.14	New Issue

NO	DESCRIPTION	QTY	REMARK
3	端子 IPEX4	1	
2	Cable $\phi 0.81$ Cable Black, 50 $\Omega$	50	
1	FPC FPC-黑油墨字 半对半基材, 做抗氧化处理 3M 9471背胶	1	

注: 60mm以内的线材, 若无客户要求  
则默认端子头朝下

XX	±5	APPROVED	CUSTOMER:	德本
X	±3.0	符学荣	PART NAME:	WiFi天线(0805) FPC(0805) SDC ID-01 07+0.81黑色线+IPEX4 右 L=50mm
.X	±1.0	CHECKED	SDC P/NO :	WF688B-0814R-50
.XX	±0.5	李瑶娜	REV	UNIT
.XXX	±0.1	DRAWING	A0	m/m
		李瑶娜	FILE :	SHEET :
				1/1

深圳市顺达成  
科技有限公司

# Electrical parameter

Electrical parameter	
(Frequency range)	2400-2500Mhz
Polarization mode	Horizontal and vertical polarization
Antenna gain	1.48dbi
standing-wave ratio	<2.0
Measurement program	/
Test equipment	Agilent(5071B) /ROHDE&SCHWARZ(CMW500)
Test Settings	Prepare the tested object with a fixture and place it on the testing turntable for preparation. Open the testing software and select the corresponding frequency band to conduct the test
Testing location	<b>OTA microwave anechoic chamber</b>
Antenna manufacturer	<b>Shenzhen Shundacheng Technology Co., Ltd</b>
Debugging mode	Single level
Antenna material	<b>FPC+coaxial line</b>

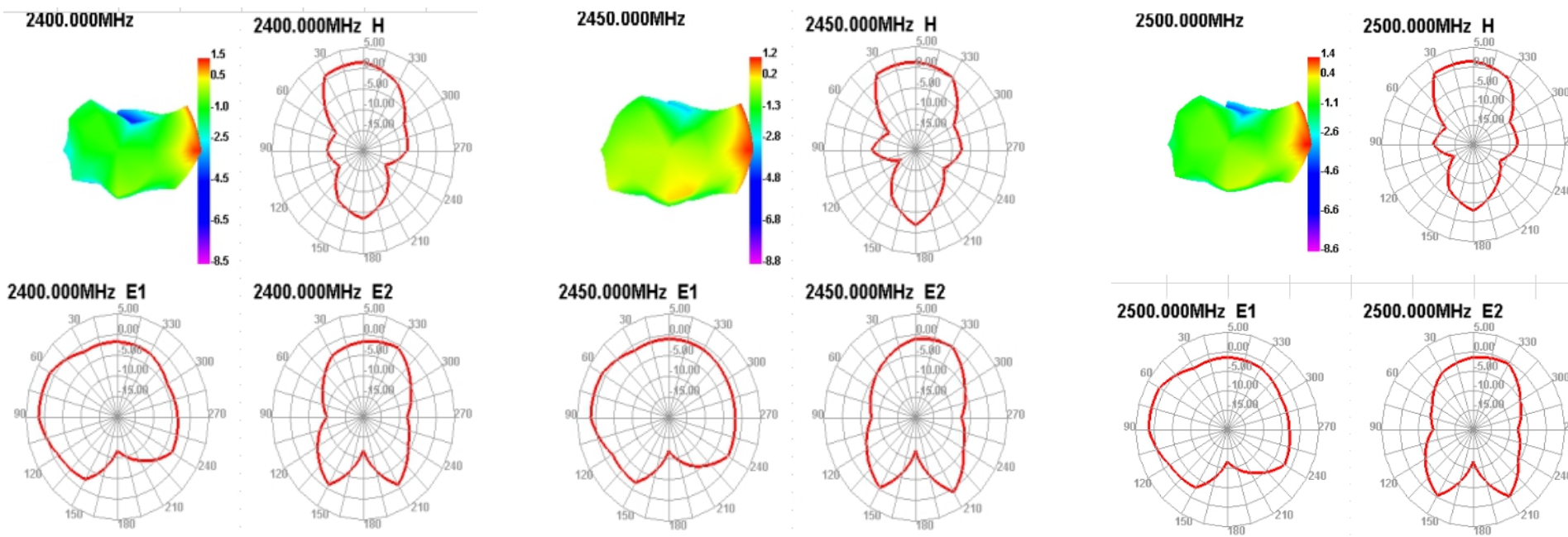
# S11 SWR /Smith/ Log Mag--WIFI



频率 (MHZ)	2400	2450	2500
阻抗 (impedance)	35.4	43.5	55.8
驻波比 (Standing wave ratio)	1.47	1.24	1.21
回损 (Return loss)	-14.3	-19.2	-20.1

# Gain & Efficiency

Frequency (MHz)	Efficiency (%)	Peak GAIN (dBi)
2400	41.45	1.48
2450	42.73	1.23
2500	43.22	1.39





Thanks