

**EXHIBIT C - EUT INTERNAL PHOTOGRAPHS**

---

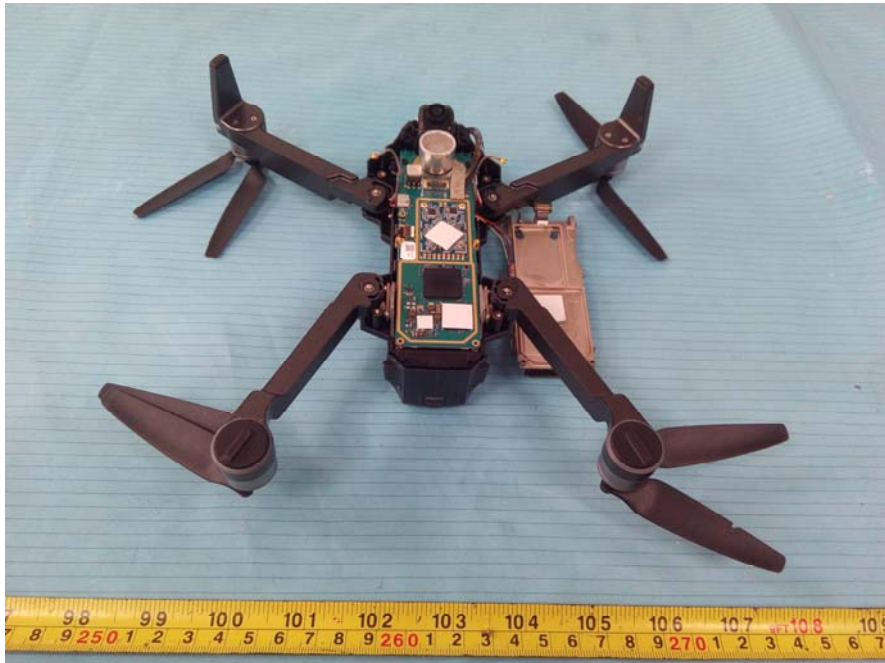
**EUT – Cover off View 1**



**EUT – Cover off View 2**



**EUT – Cover off View 3**



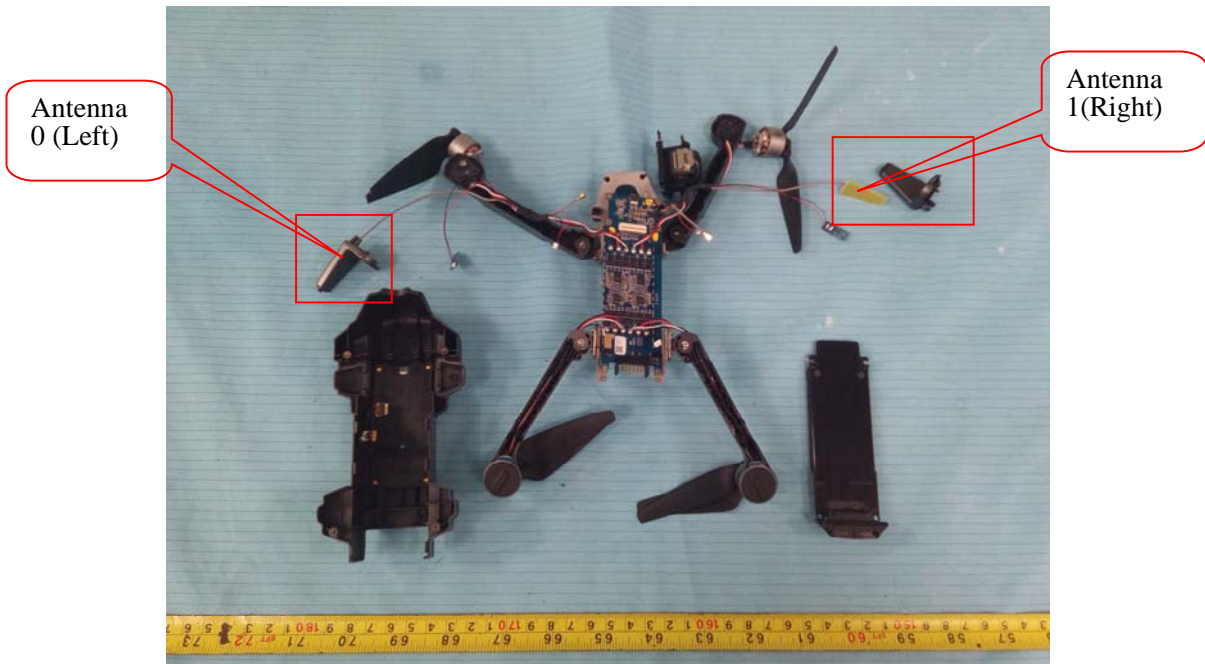
**EUT – Cover off View 4**



**EUT – Cover off View 5**

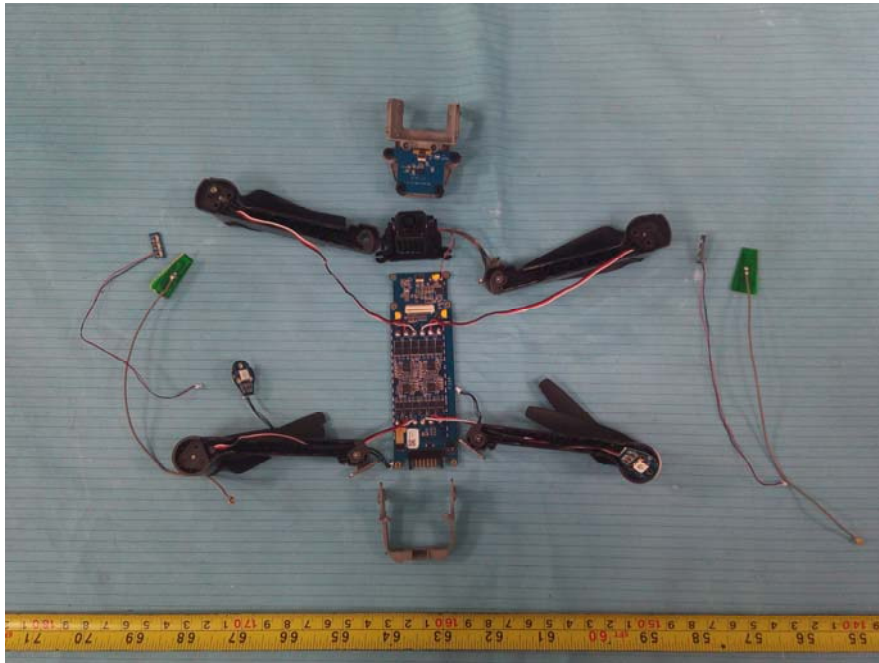


**EUT – Cover off View 6**

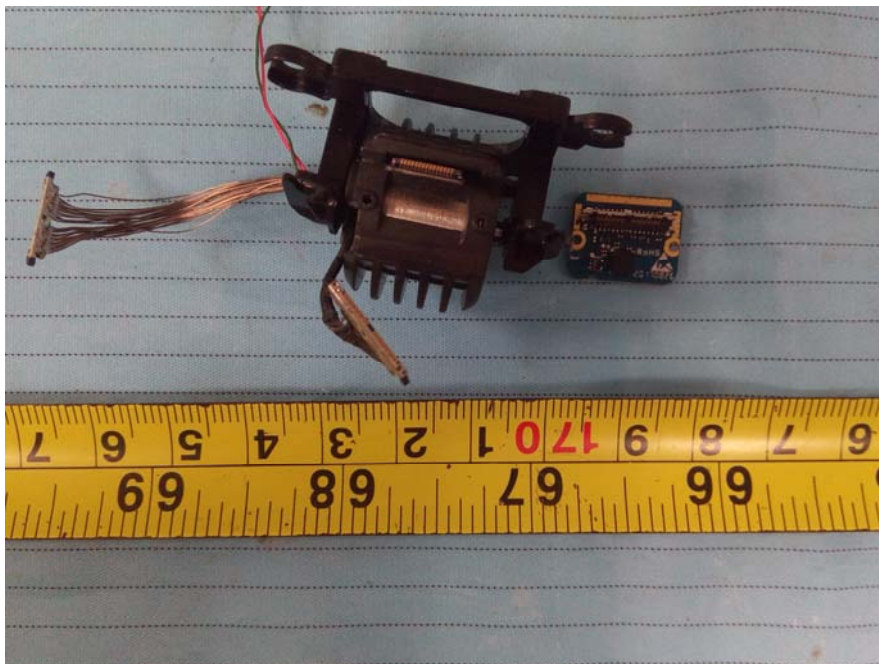




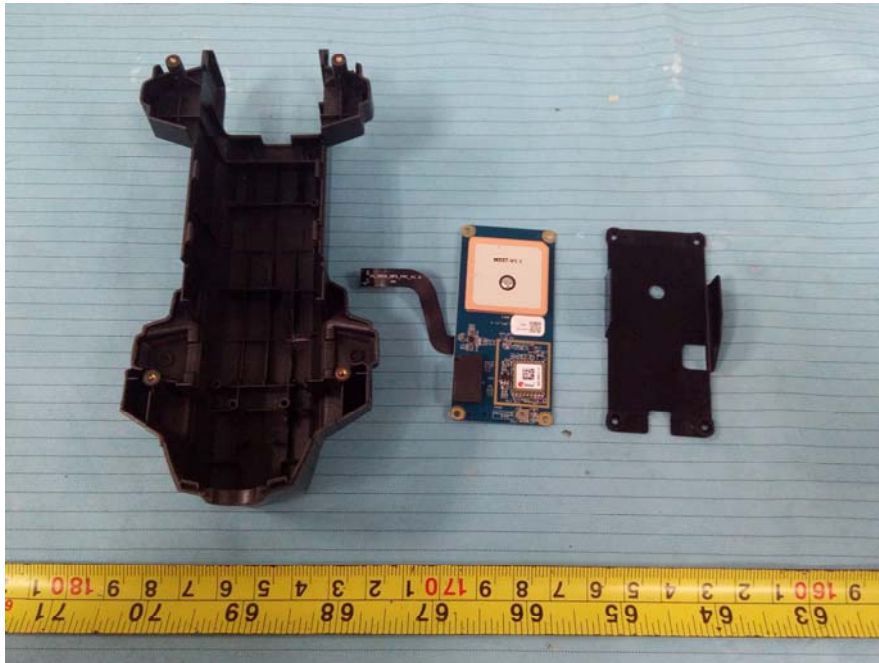
**EUT – Cover off View 7**



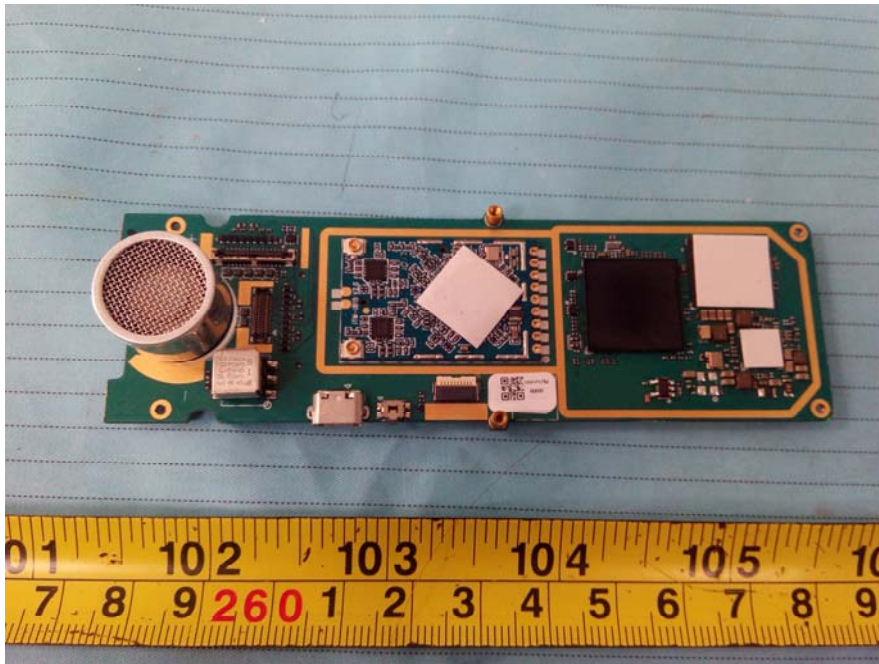
**EUT – Cover off View 8**



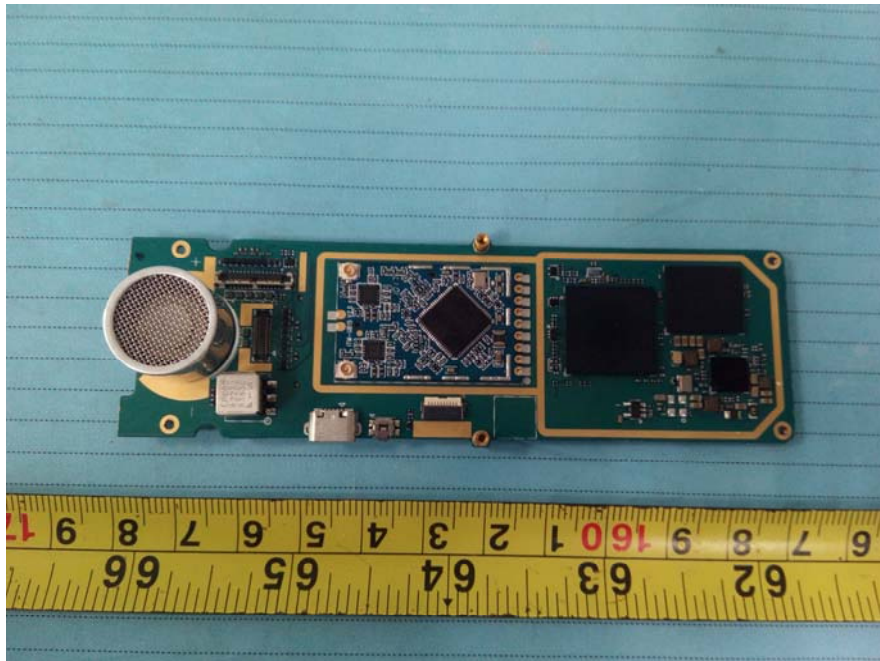
**EUT – Cover off View 9**



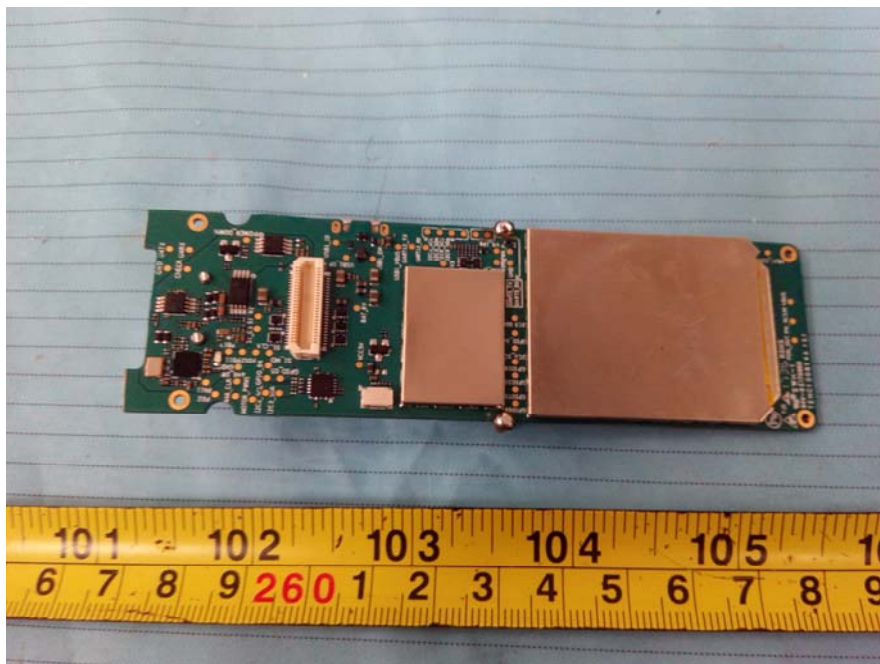
**EUT – Main Board 1 Top View**



**EUT – Main Board 1 Top shilding off View**

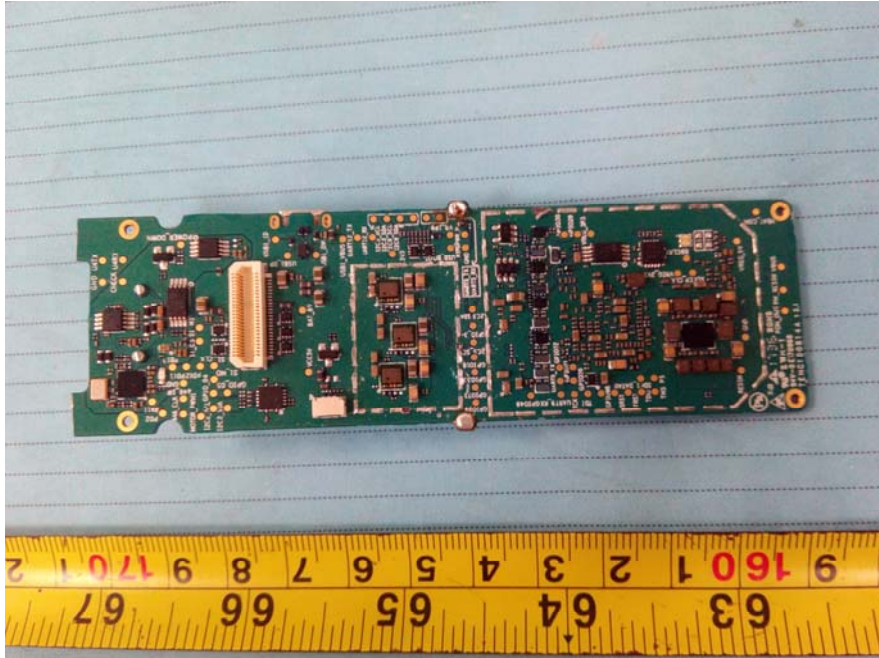


**EUT – Main Board 1 Bottom View**

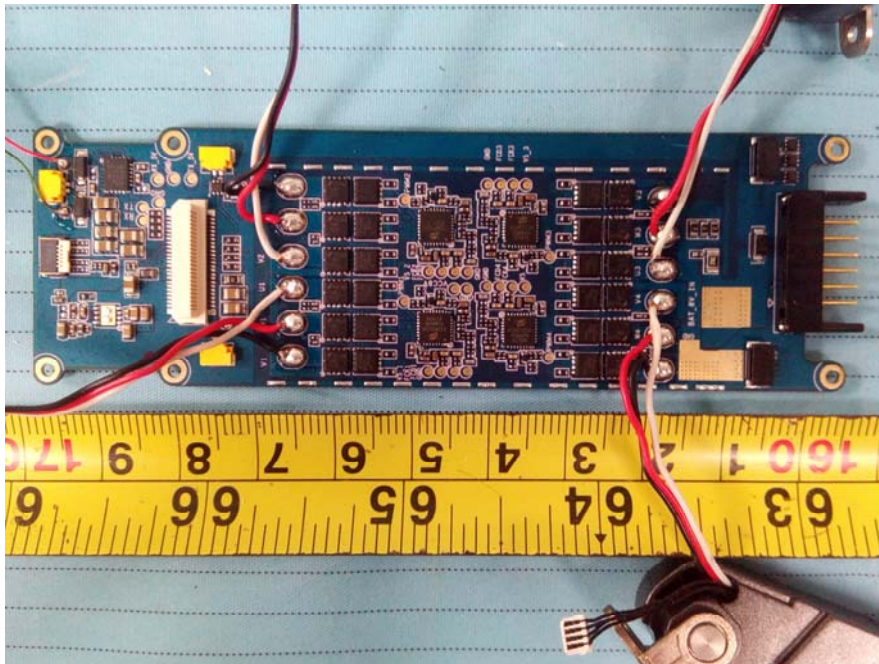




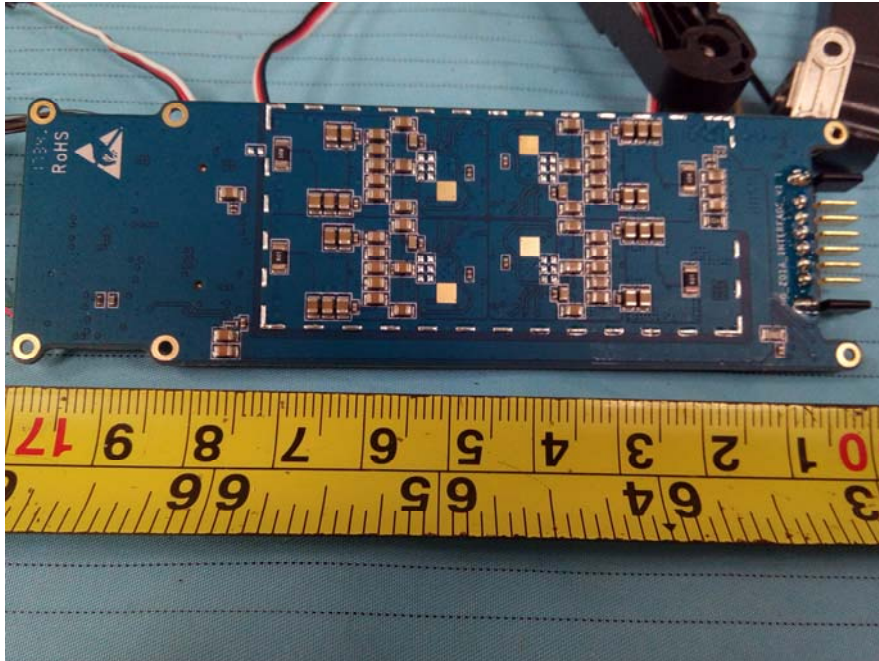
**EUT – Main Board 1 Bottom shilding off View**



**EUT – Main Board 2 Top View**



**EUT – Main Board 2 Bottom View**



**EUT – Main Board 3&4 Top View**

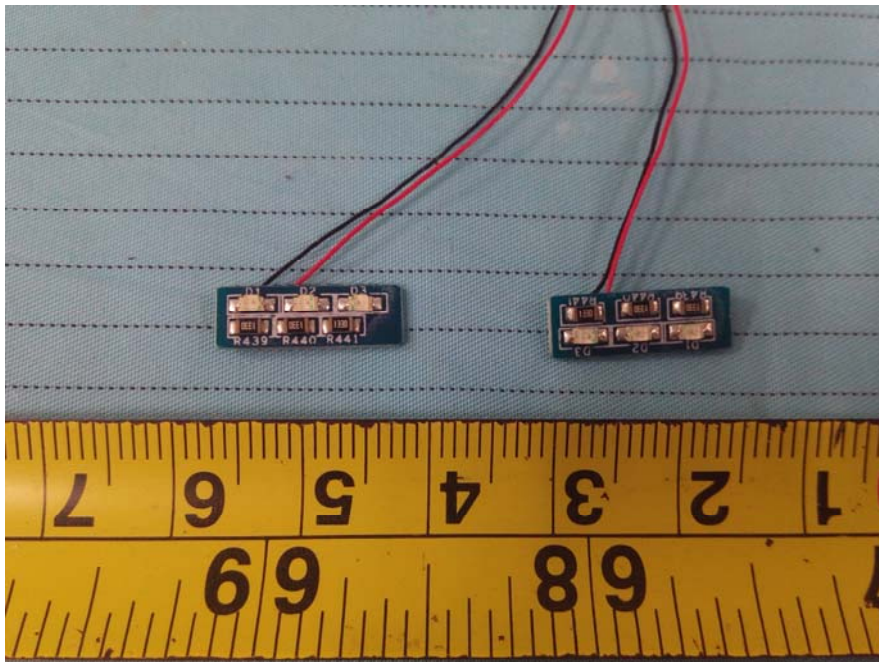




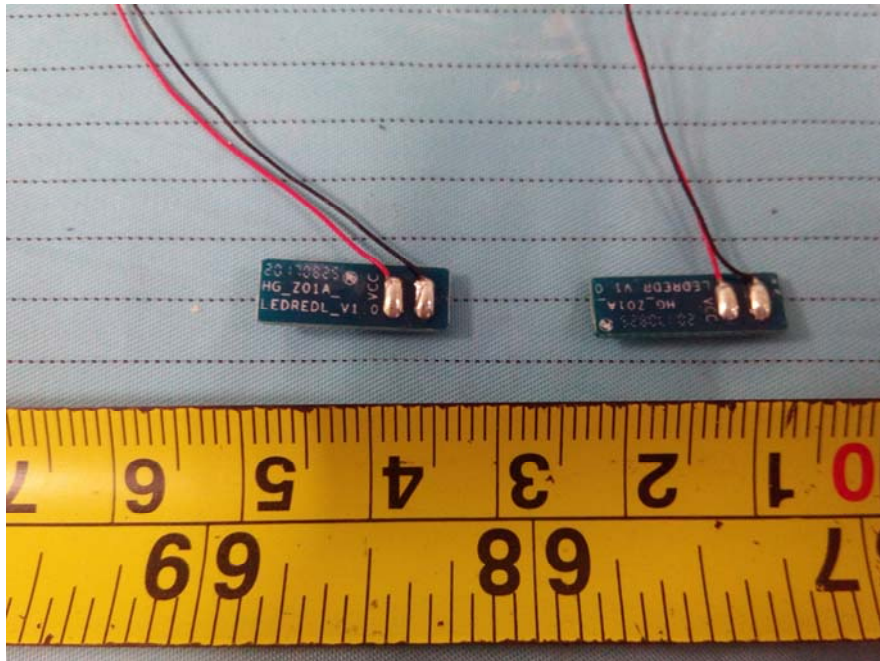
**EUT – Main Board 3&4 Top shilding off View**



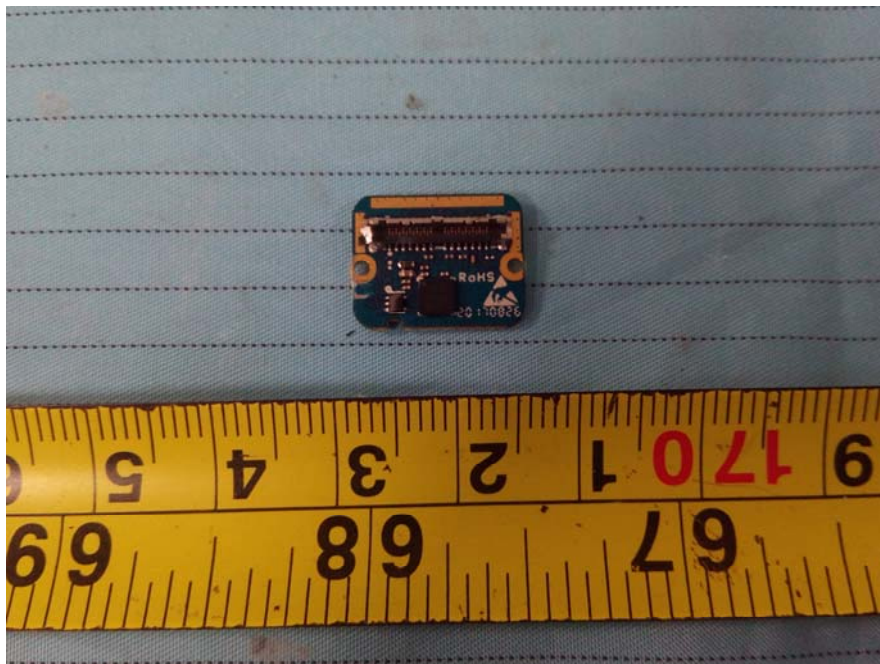
**EUT – Main Board 5&6 Bottom View**



**EUT – Main Board 5&6 Top View**

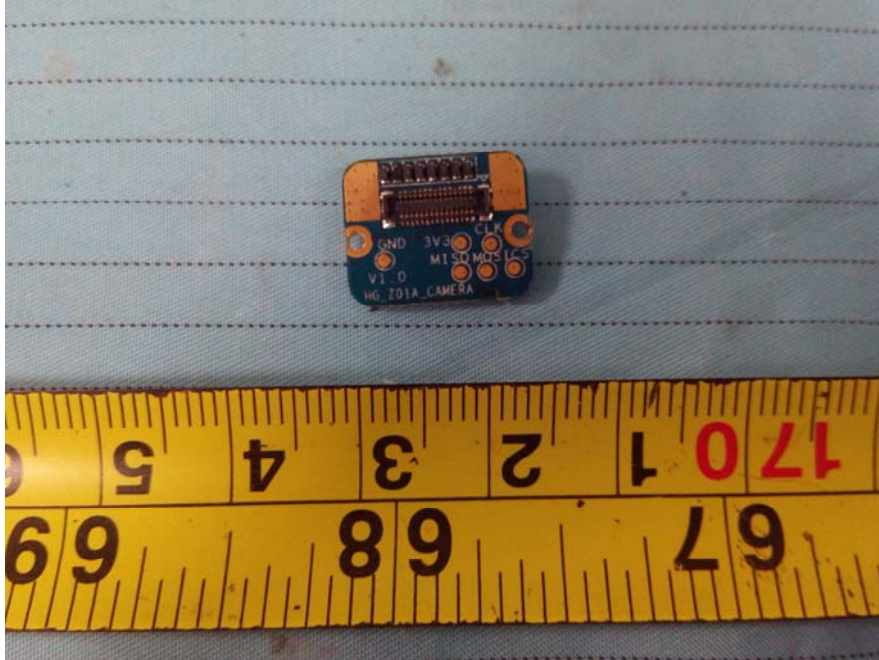


**EUT – Main Board 7 Top View**

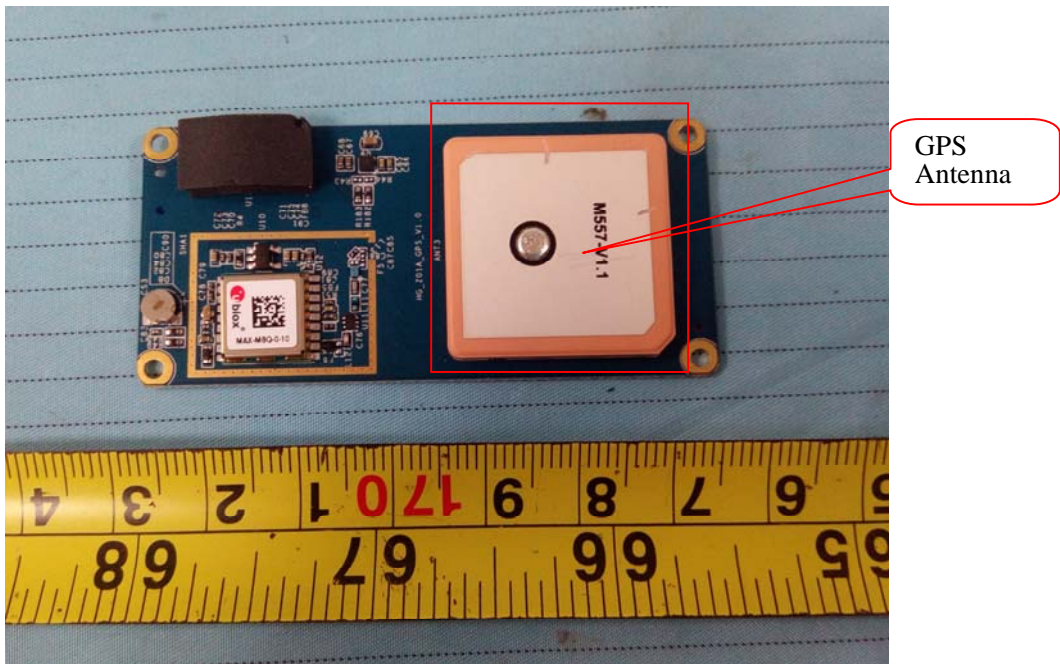




**EUT – Main Board 7 Bottom View**

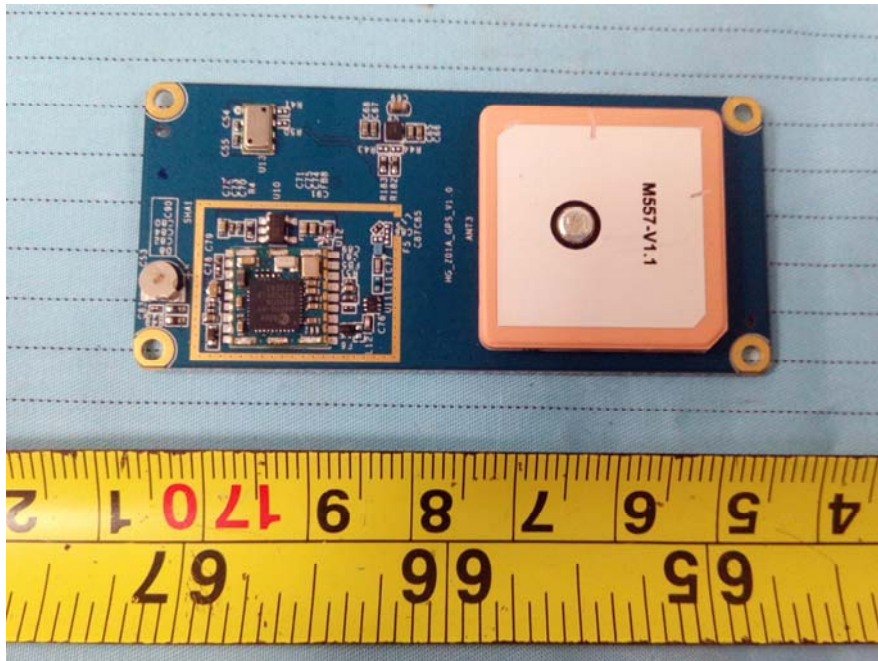


**EUT – Main Board 8 Top View**

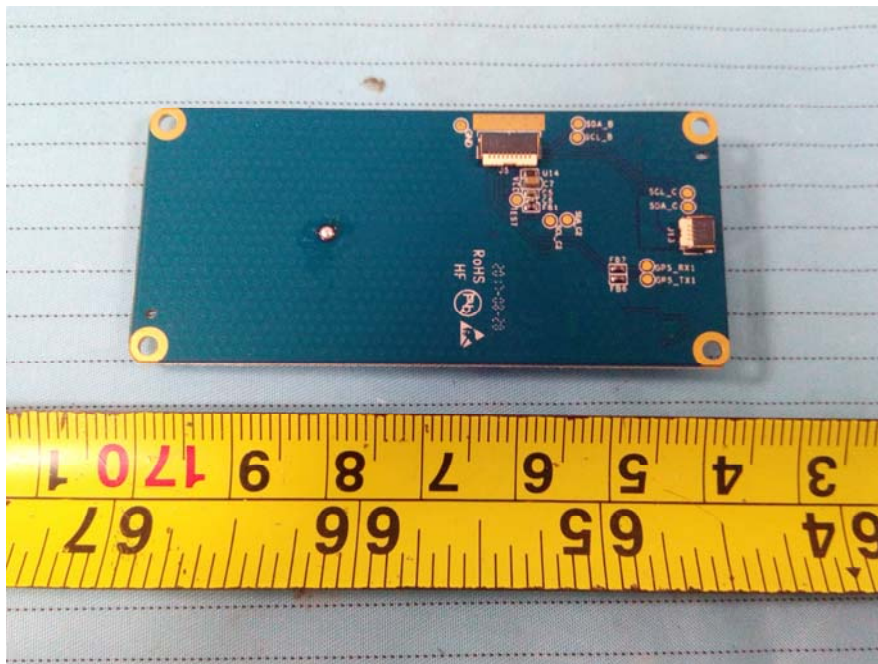




**EUT – Main Board 8 Top shilding off View**



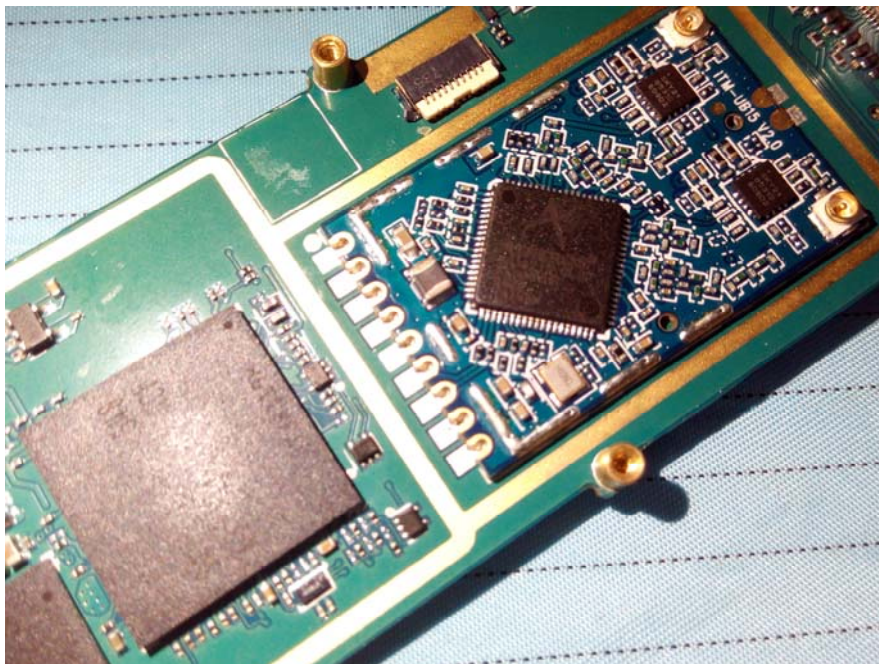
**EUT – Main Board 8 Bottom View**



**EUT – IC Chip 1 View**

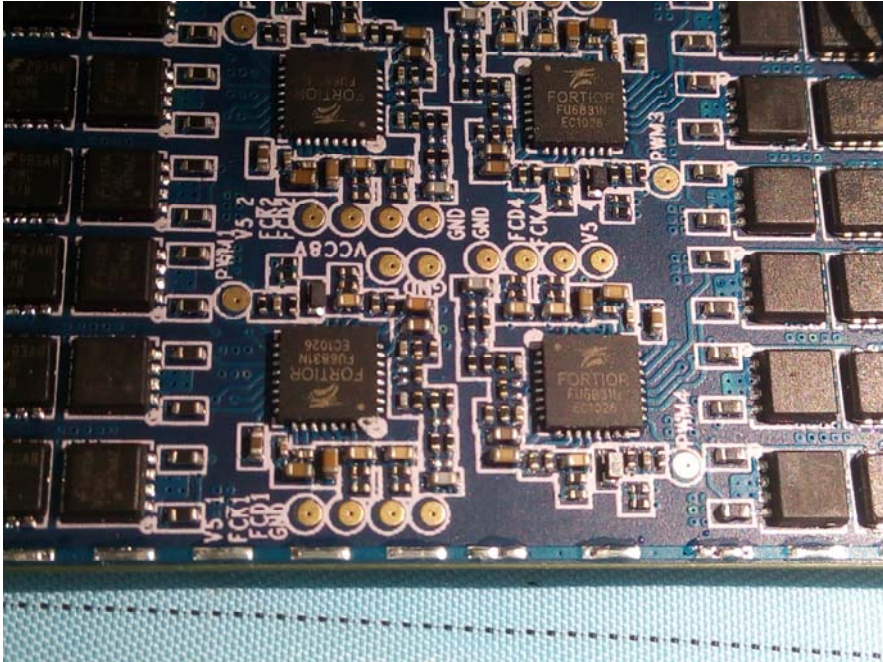


**EUT – IC Chip 2 View**

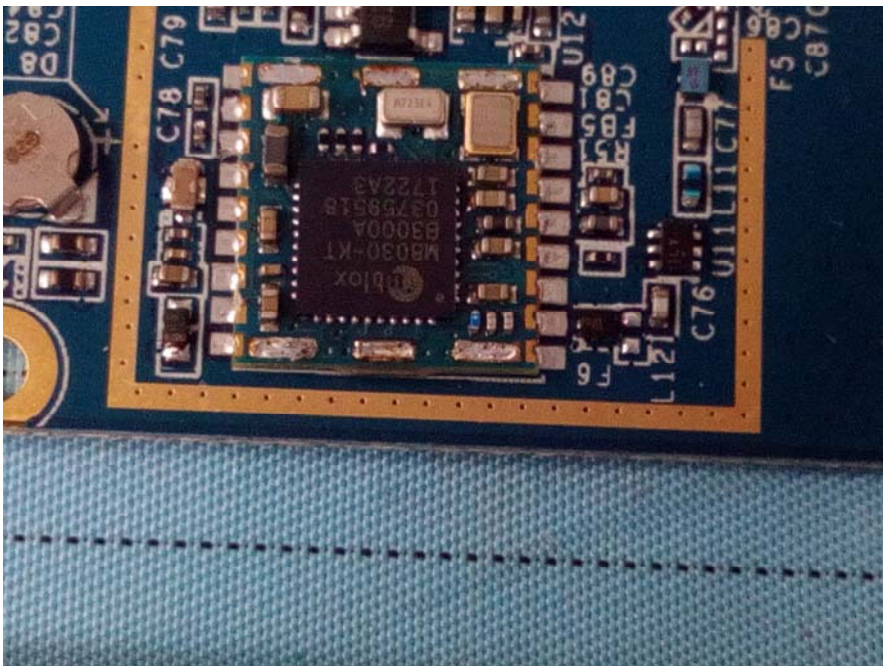




**EUT –IC Chip 3 View**

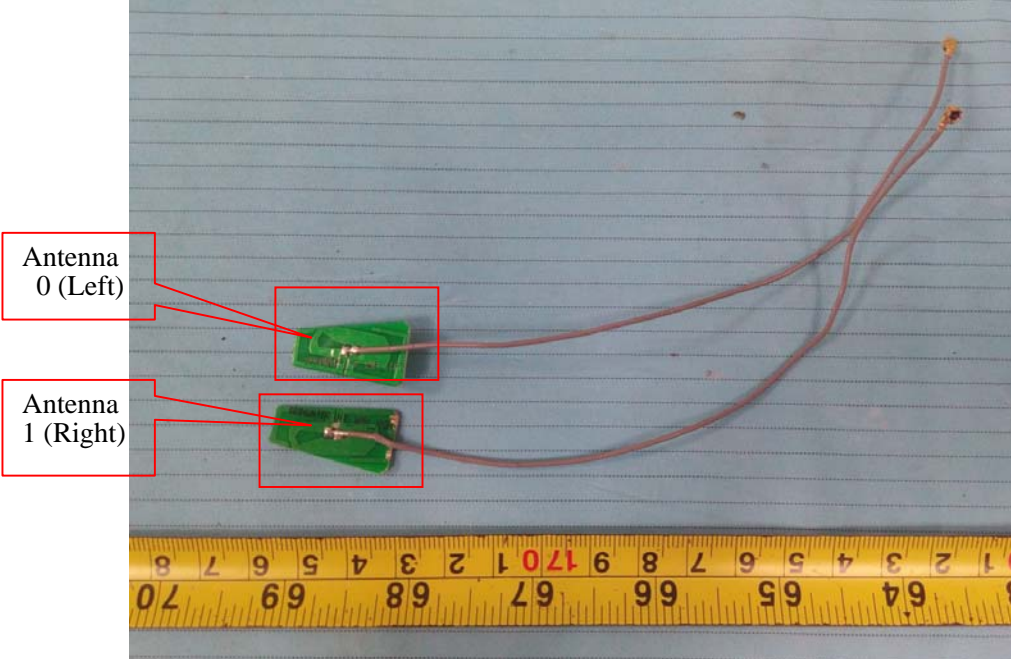


**EUT –IC Chip 4 View**

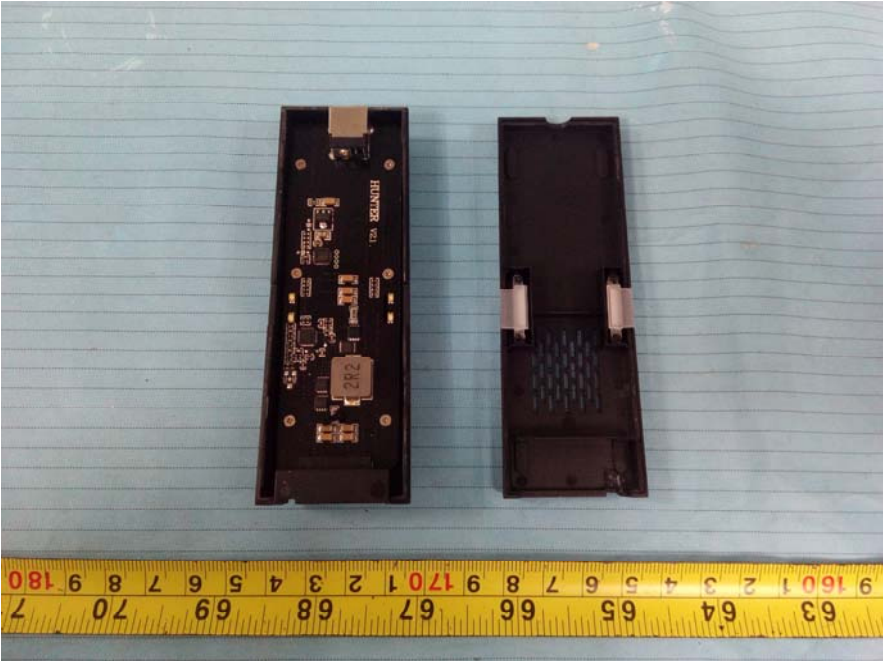




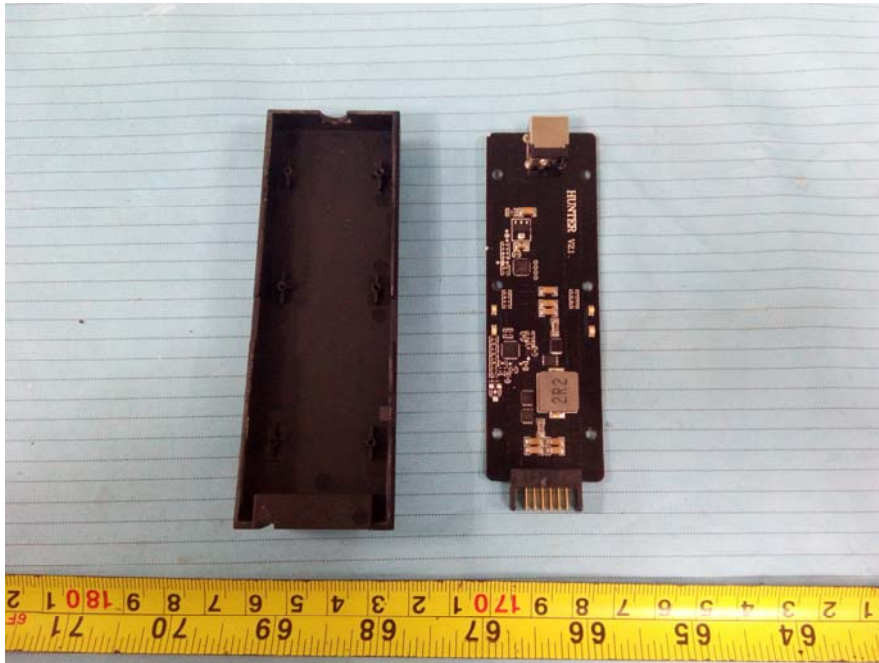
**EUT –Antenna View**



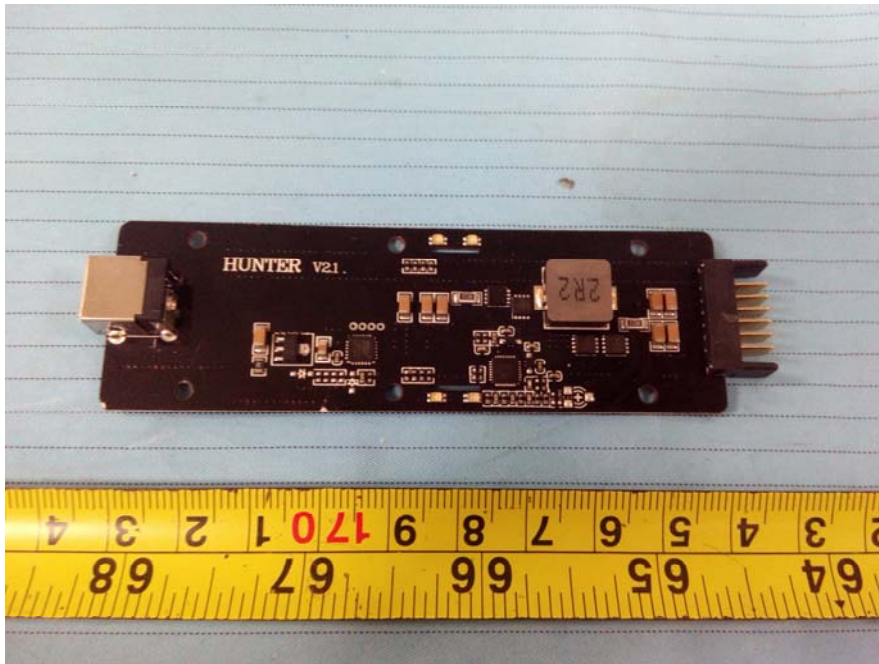
**EUT – Cover off View 1 (Battery Charger)**



**EUT – Cover off View 2 (Battery Charger)**



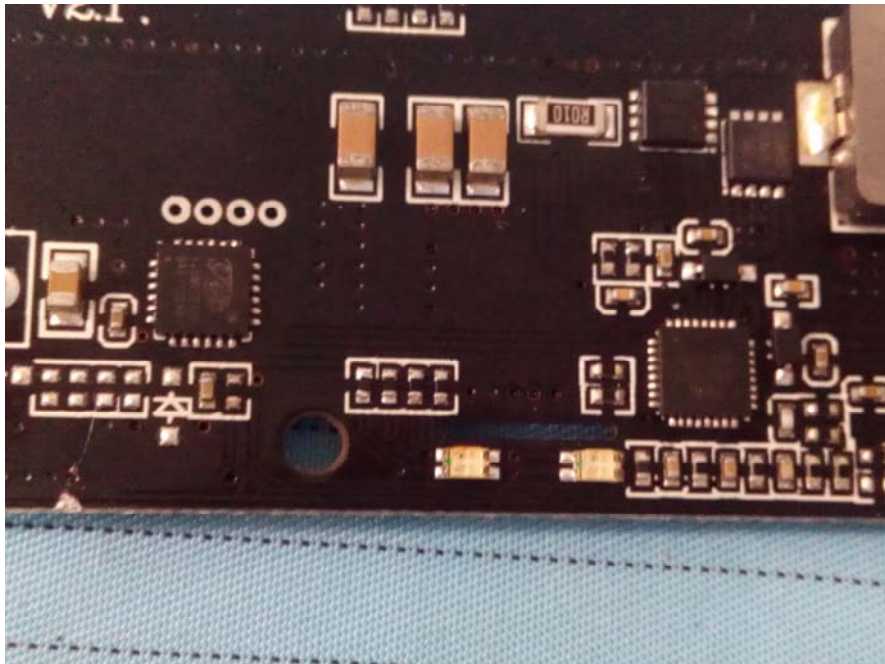
**EUT – Main Board Top View (Battery Charger)**



**EUT – Main Board Bottom View (Battery Charger)**



**EUT –IC Chip View (Battery Charger)**





**EUT – Label View (Battery Charger)**



**EUT – Battery View**



## EUT – Battery Label Top View



## EUT – Battery Label Bottom View

### WARNING

1. Only use HESPER approved charging devices.

仅使用HESPER专用充电

2. This battery unit should not be near fire or high temperatures.

远离高温及火源器

3. Please put the battery to the place out of the reach of children.

请放置于儿童触碰不到的位置

4. Do not open, tamper, or damage the battery. It may cause electric shock, fire, or cause damage to the unit.

禁止私自打开、损坏电池

5. Operating temperature range 0°C-40°C; Storage temperature range: -20°C-60°C.

