

MUZEN

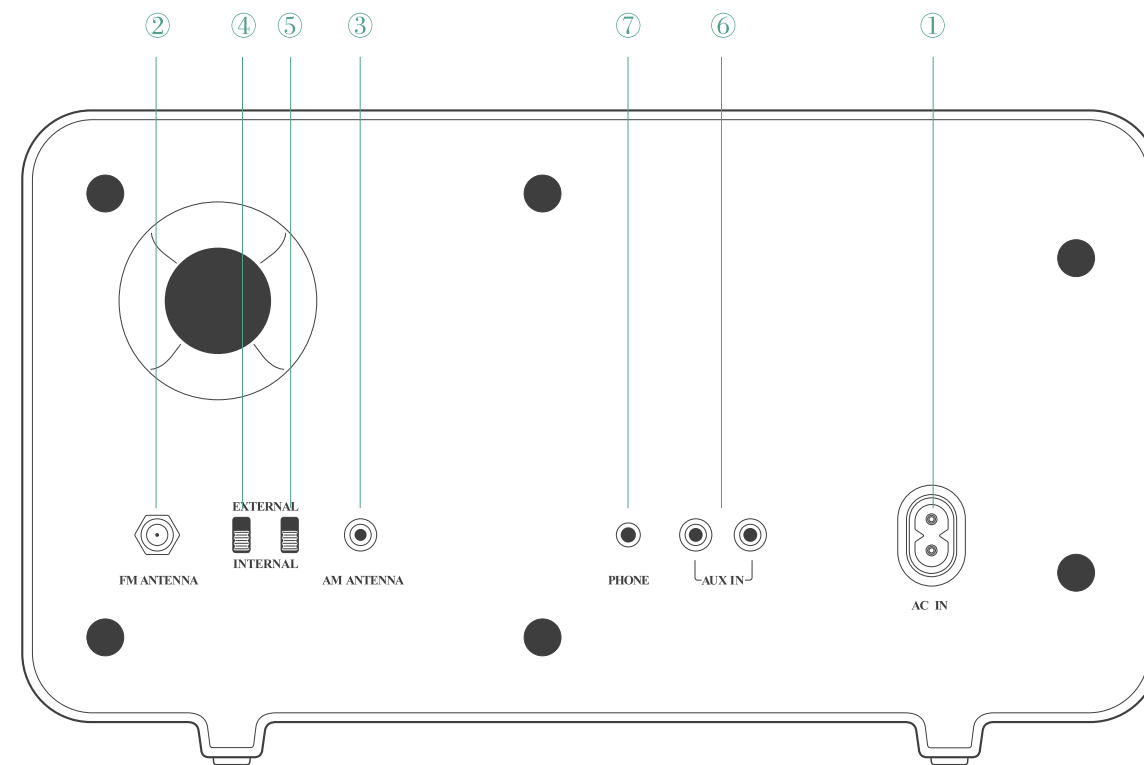
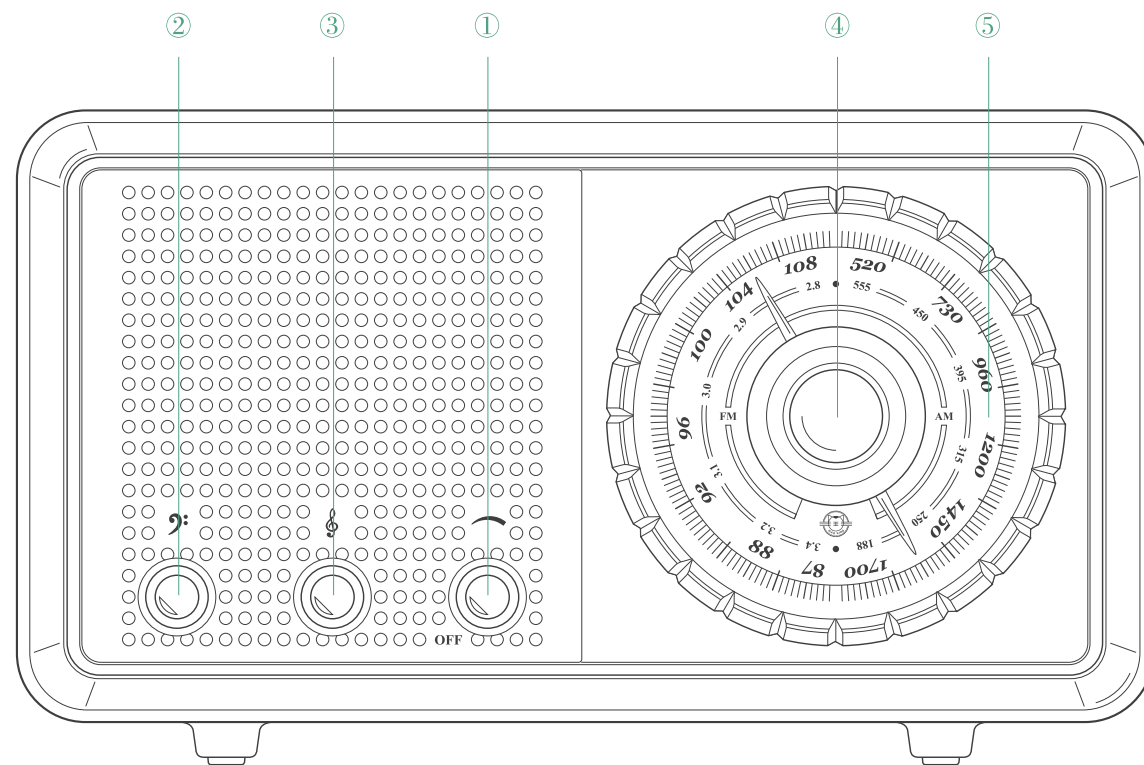
ORIGINAL III AM/FM RADIO&BLUETOOTH SPEAKER

R303I



Picture (1)

- ① power switch/sound volume
- ② BASS
- ③ TREBLE
- ④ Freq. Scan
- ⑤ Radio Station Scale

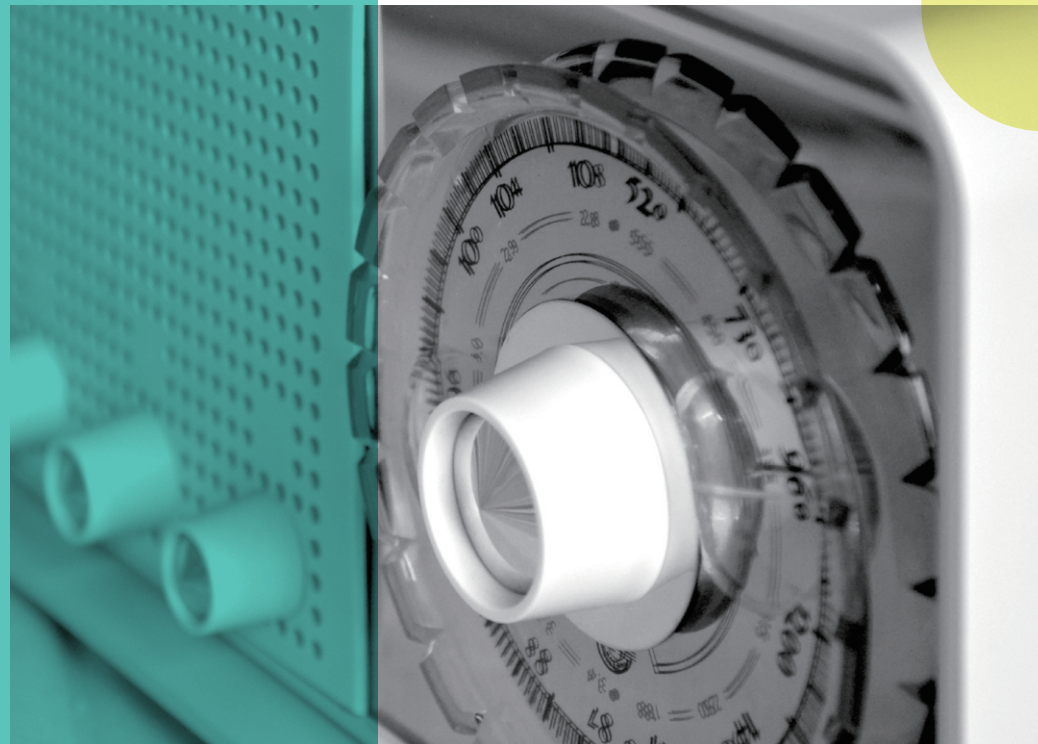


Picture (2)

- ① power port ( in )
- ② FM external antenna port
- ③ AM external antenna port
- ④ FM internal/external antenna transfer switch
- ⑤ AM internal/external antenna transfer switch
- ⑥ AUX IN circuit auxiliary input
- ⑦ phone connector

# MUZEN ORIGINAL III

## A Better Radio & A Better Sound



### Characteristic

1.

The machine adopts the high-grade SILICON LABS radio receiver chip plus the low noise amplifier and other excellent circuits , which makes it accept the sensitivity and other excellent performance.

2.

The special electroacoustic design is adopted , which has been taught by the master's tuner several times, making this radio a very good sound quality.

4.

There is a dynamic bass control circuit that guarantees a full bass volume at a small volume. (explanation: the general sound circuit is usually low in low volume because of low energy.).

3.

It adopts the professional high bass regulating circuit to satisfy different listening interests.

6.

Rich interface ports.

5.

Sleek and elegant shape design.

7.

Equipped with a 4.0 Bluetooth system.



## Power

This machine uses AC power supply

External AC power supply

Insert the auxiliary power cord of the machine into the corresponding municipal electrical outlet, and insert the power outlet in the left rear of the machine at the other end (figure 2①).



AC IN

## Switching machine/volume

Power switch/volume adjustment ( figure 1① )

Turn the knob clockwise and hear the "pa" signal that the power switch is on and the power is turned off counterclockwise.

Turn clockwise when the power is turned on to turn up the volume.



## Tone control

Bass adjustment : ( figure 1② )  
Adjust this knob to change the bass, and adjust according to your own preferences.



Treble adjustment : ( figure 1③ )  
Adjust this button to change the high notes, and adjust according to your own preferences.



# MUZEN ORIGINAL III

## JUST LISTEN



## Listen to the radio

Listen to the FM broadcasting

Make the band switch to the place“FM”, and then rotate the dial knob (figure1④) , to find the radio you like.

**TIP:** If the sound of radio is not clear, or by the influence of the distance or building and so on, making the signal too weak, and it can't achieve the ideal effect, you can use the machine configuration (or buy) external antenna to receive it. Insert the external antenna. (figure2②)

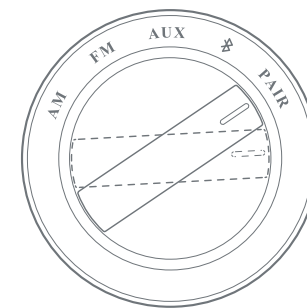
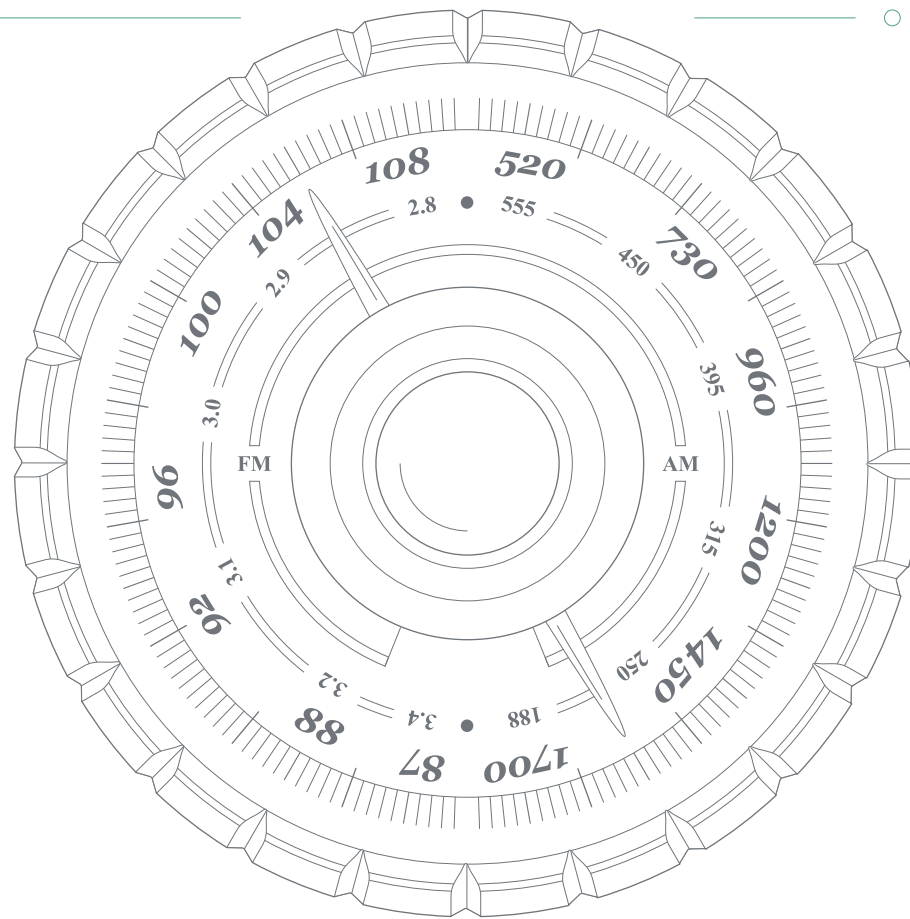
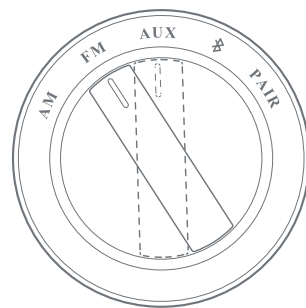


FM ANTENNA

Listen to the AM broadcasting

Turn the band switch to the“AM” , and rotate the dial knob ( figure1④ ) to find the radio you are interested in.

**Tip:** Since the amplitude modulation is a built-in magnetic rod antenna, it has a strong directivity. It can swing the radio to the clearest place, and it may make the eternal antenna better.



## The use of the Bluetooth

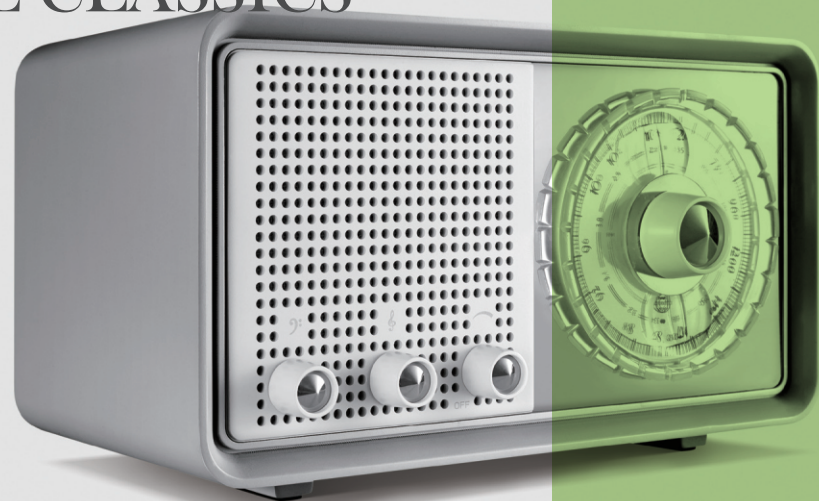
Make the band switch ( figure3 ) to the Bluetooth, you will hear a sound like “beep beep” when pairing, then open your Bluetooth devices such as mobile phone looking for Bluetooth named “Original III”, and click on it, then it will begin to connect. After successful connection, you can open the player to play music.

Use of paired switch

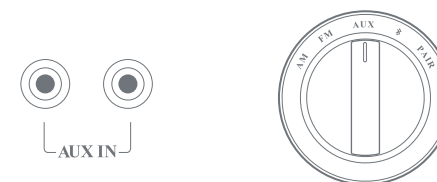
Make the band switch ( figure3 ) to “PAIR”, stay in Bluetooth for more than five seconds, then disconnect the paired devices so that other devices can match them.

**Tip:** When paired with the machine, the next open opportunity will automatically connect the device.

# MUZEN ORIGINAL III RETURN TO THE CLASSICS



## The use of Aux Input



This machine can connect the external source with the signal line which has the RCA plug. (MP3/iPod/CD and so on)

When using, insert a signal line with the RCA plug which is connected with the audio source into the back of the radio "AUX"(figure 2⑥) , and then make the band switch(figure3) to the AUX position to play the

## Matters needing attention

1. Avoid violent impact or high fall.
2. Do not place in the hot and humid area or the area which has direct sunlight.
3. Magnetic carriers such as cassette tape should be kept away from loudspeakers so as to avoid loss of records or noise, and avoid proximity to computer monitors, television and so on.
4. When cleaning the shell, wiping with soft cloth with wet detergent solution. Do not use strong solvents such as alcohol and diluent.
5. After using, the power switch should be turned off and the power source should be pulled out if the machine doesn't run for a long time.
6. Please do not use power supply beyond the specified voltage range.

## Specifications

Frequency range: FM87MHz-108MHz AM520KHz-1700KHz

Acceptance sensitivity: FM: 3uv AM:<1mv

Signal to noise ratio: FM>50db AM>40db

FM separating degree35db Bluetooth: 55db

Selective: FM>40db AM>30db

The distortion: FM1% AM1.5% Bluetooth0.5%

Maximum output: 20W

Power consumption: 30W

Loudspeaker: 4-inch bass+1-inch silk membrane treble

Physical size: 160mm\*290mm\*164mm

## Packing list

Radio (1) /power cord (1)/FM antenna (1)/instruction book (1)/warranty card (1)

## FCC Warning

This equipment has been tested and found to comply with the limits for a Class B digital device, pursuant to part 15 of the FCC Rules. These limits are designed to provide reasonable protection against harmful interference in a residential installation. This equipment generates, uses and can radiate radio frequency energy and, if not installed and used in accordance with the instructions, may cause harmful interference to radio communications. However, there is no guarantee that interference will not occur in a particular installation. If this equipment does cause harmful interference to radio or television reception, which can be determined by turning the equipment off and on, the user is encouraged to try to correct the interference by one or more of the following measures:

- Reorient or relocate the receiving antenna.
- Increase the separation between the equipment and receiver.
- Connect the equipment into an outlet on a circuit different from that to which the receiver is connected.
- Consult the dealer or an experienced radio/TV technician for help.

Caution: Any changes or modifications to this device not explicitly approved by manufacturer could void your authority to operate this equipment

This device complies with part 15 of the FCC Rules. Operation is subject to the following two conditions: (1) This device may not cause harmful interference, and (2) this device must accept any interference received, including interference that may cause undesired operation.

The device has been evaluated to meet general RF exposure requirement. The device can be used in portable exposure condition without restriction.

## ISED Warning

-English Warning Statement:

"This device complies with Industry Canada licence-exempt RSS standard(s). Operation is subject to the following two conditions: (1) this device may not cause interference, and (2) this device must accept any interference, including interference that may cause undesired operation of the device."  
The digital apparatus complies with Canadian CAN ICES-3 (B)/NMB-3(B).

-French Warning Statement:

"Le présent appareil est conforme aux CNR d'Industrie Canada applicables aux appareils radio exempts de licence. L'exploitation est autorisée aux deux conditions suivantes : (1) l'appareil ne doit pas produire de brouillage, et (2) l'utilisateur de l'appareil doit accepter tout brouillage radioélectrique subi, même si le brouillage est susceptible d'en compromettre le fonctionnement."

Cet appareil numérique de la classe B est conforme à la norme NMB-003 du Canada.

This equipment complies with IC radiation exposure limits set forth for an uncontrolled environment and meets RSS-102 of the IC radio frequency (RF) Exposure rules. This equipment has very low levels of RF energy that are deemed to comply without testing of specific absorption ratio (SAR). Cet équipement est conforme aux limites d'exposition aux rayonnements énoncées pour un environnement non contrôlé et respecte les règles d'exposition aux fréquences radioélectriques (RF) CNR-102 de l'IC. Cet équipement émet une énergie RF très faible qui est considérée conforme sans évaluation du débit d'absorption spécifique (DAS).

The device complies with RF specifications