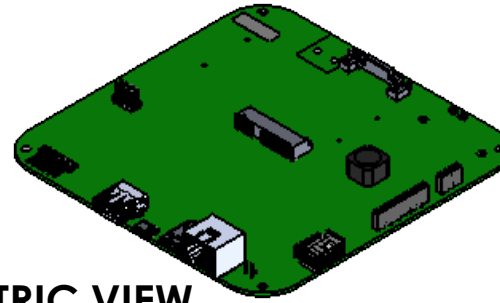


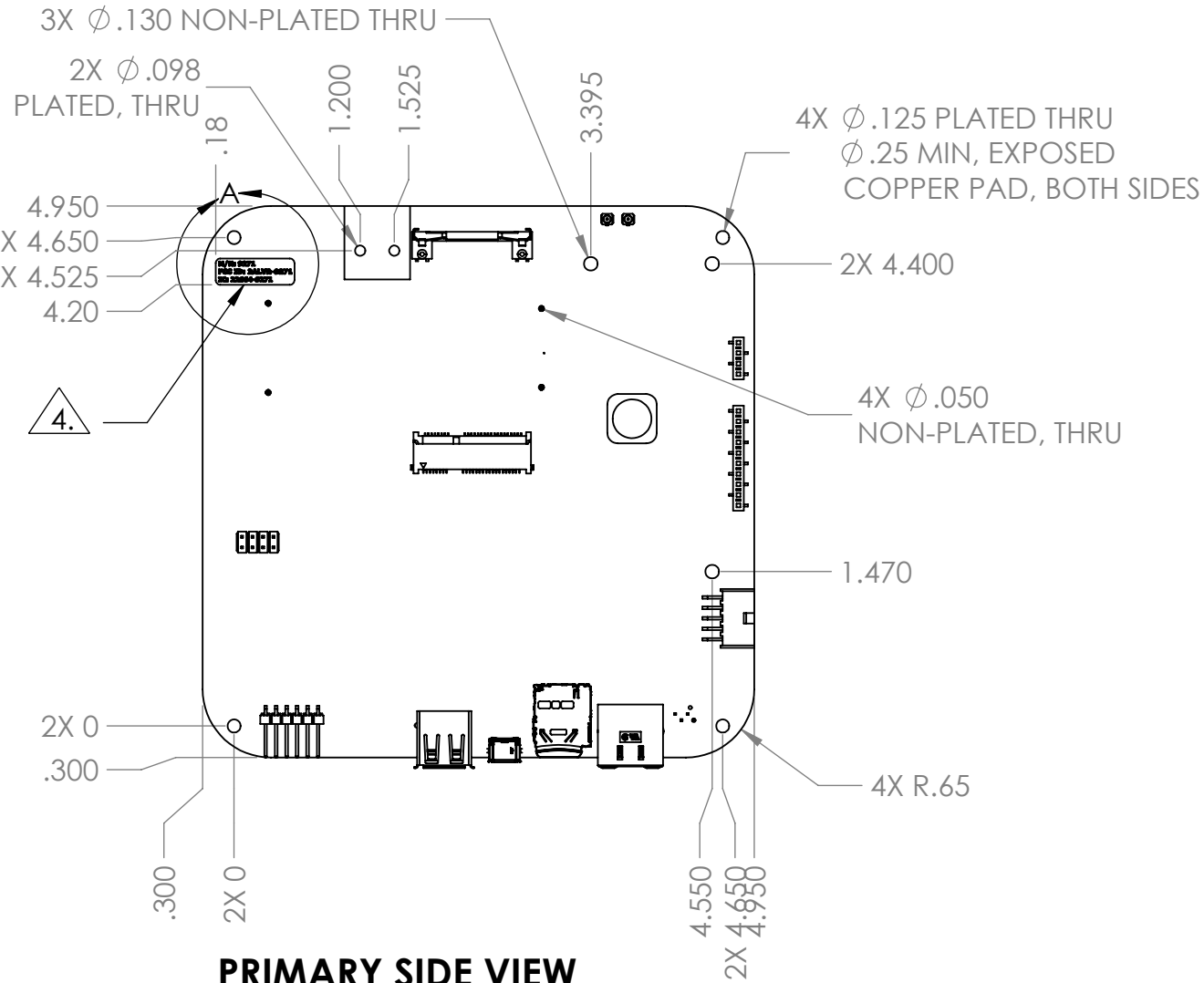
**NOTES: UNLESS OTHERWISE SPECIFIED**

1. INTERPRET DIMENSIONS AND TOLERANCES PER ASME Y14.5M-2009.
2. MATERIAL: FR4 FIBER BOARD, 1.6MM [0.063"] THICK. PCB SHALL BE ROHS COMPLIANT AND MEET OR EXCEED REQUIREMENTS OF IPC4101/129.
3. FINISH: EXPOSED COPPER SHALL BE COATED WITH ELECTROLESS NICKEL/IMMERSION GOLD.
4. ADD PRODUCT LABEL, EL PART NO. 2090, APPROXIMATELY AS SHOWN.

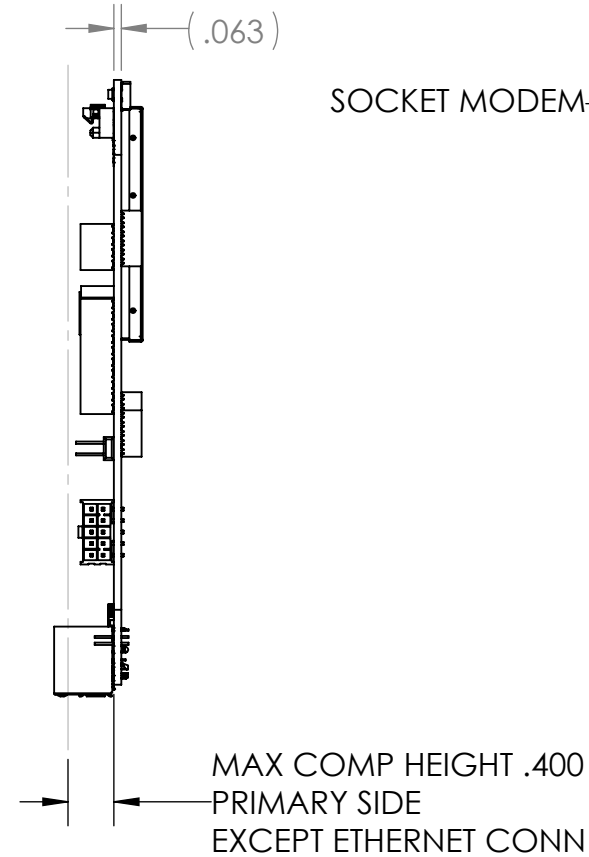


**ISOMETRIC VIEW**

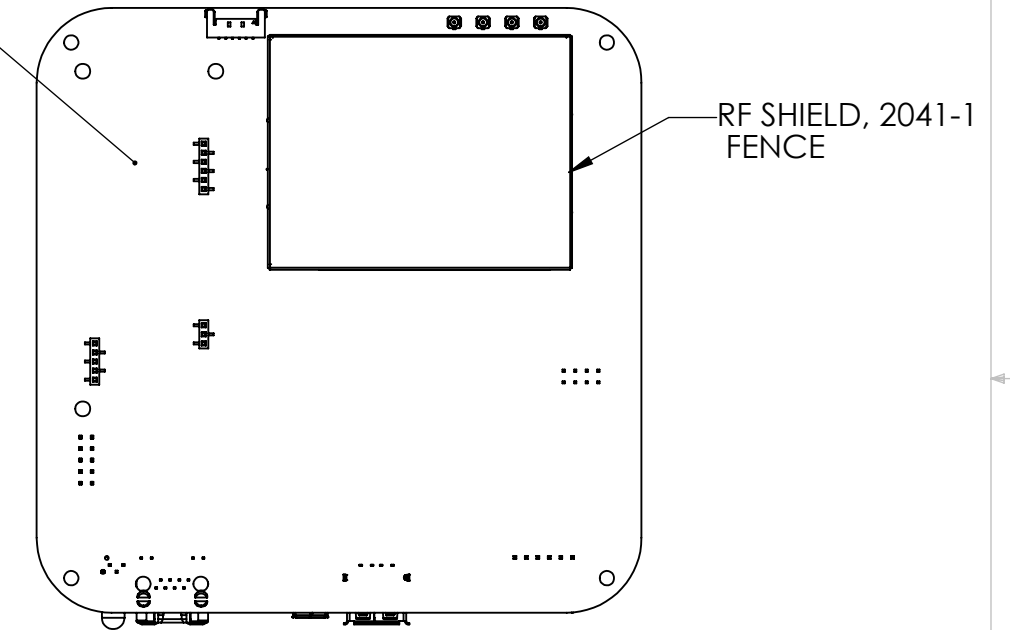
REVISIONS				
ZONE	REV.	DESCRIPTION	DATE	APPROVED
	003	REVISED PRODUCT LABEL VIEW.	6/27/2017	



**PRIMARY SIDE VIEW**



**SIDE VIEW**



**SECONDARY SIDE VIEW**

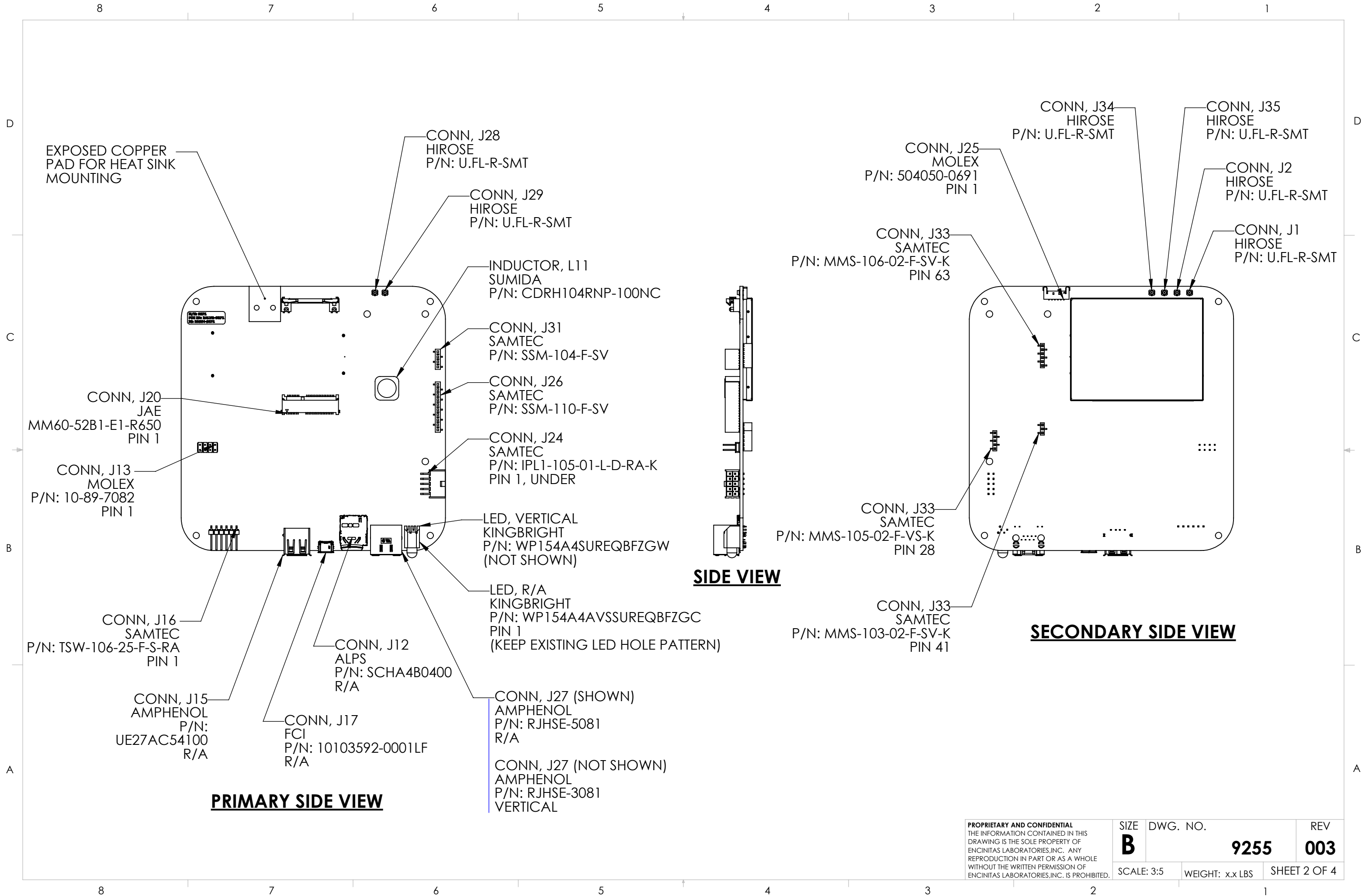
**EL PART NUMBERS:**  
 PCBA: 9271-X  
 PCB: 9270

M/N: 9271  
 FCC ID: 2ALVR-9271  
 IC: 22664-9271

DETAIL A  
 SCALE 3:1  
 (9271 SHOWN)

**PROPRIETARY AND CONFIDENTIAL**  
 THE INFORMATION CONTAINED IN THIS DRAWING IS THE SOLE PROPERTY OF ENCINITAS LABORATORIES, INC. ANY REPRODUCTION IN PART OR AS A WHOLE WITHOUT THE WRITTEN PERMISSION OF ENCINITAS LABORATORIES, INC. IS PROHIBITED.

UNLESS OTHERWISE SPECIFIED:		NAME	DATE	 2386 FARADAY AVE., STE. 140 CARLSBAD, CA 92008 <b>TITLE:</b> <b>CONSTRAINTS DRAWING, PCBA, REV 1B, RRS</b> SIZE DWG. NO. REV <b>B</b> <b>9255</b> <b>003</b> SCALE: 3:5 WEIGHT: SHEET 1 OF 4
DIMENSIONS ARE IN INCHES		DRAWN	B. Wixom 8/17/2016	
TOLERANCES:		CHECKED		
FRACTIONAL $\pm$		ENG APPR.		
ANGULAR: MACH $\pm$ BEND $\pm$		MFG APPR.		
TWO PLACE DECIMAL $\pm$		Q.A.		
THREE PLACE DECIMAL $\pm$		COMMENTS:		
INTERPRET GEOMETRIC TOLERANCING PER:	MATERIAL			
	ABS PLASTIC, BLACK			
FINISH				
NEXT ASSY	USED ON			
APPLICATION	DO NOT SCALE DRAWING			



<b>PROPRIETARY AND CONFIDENTIAL</b> THE INFORMATION CONTAINED IN THIS DRAWING IS THE SOLE PROPERTY OF ENCINITAS LABORATORIES, INC. ANY REPRODUCTION IN PART OR AS A WHOLE WITHOUT THE WRITTEN PERMISSION OF ENCINITAS LABORATORIES, INC. IS PROHIBITED.	SIZE	DWG. NO.	REV
	<b>B</b>	<b>9255</b>	<b>003</b>
SCALE: 3:5	WEIGHT: x.x LBS	SHEET 2 OF 4	

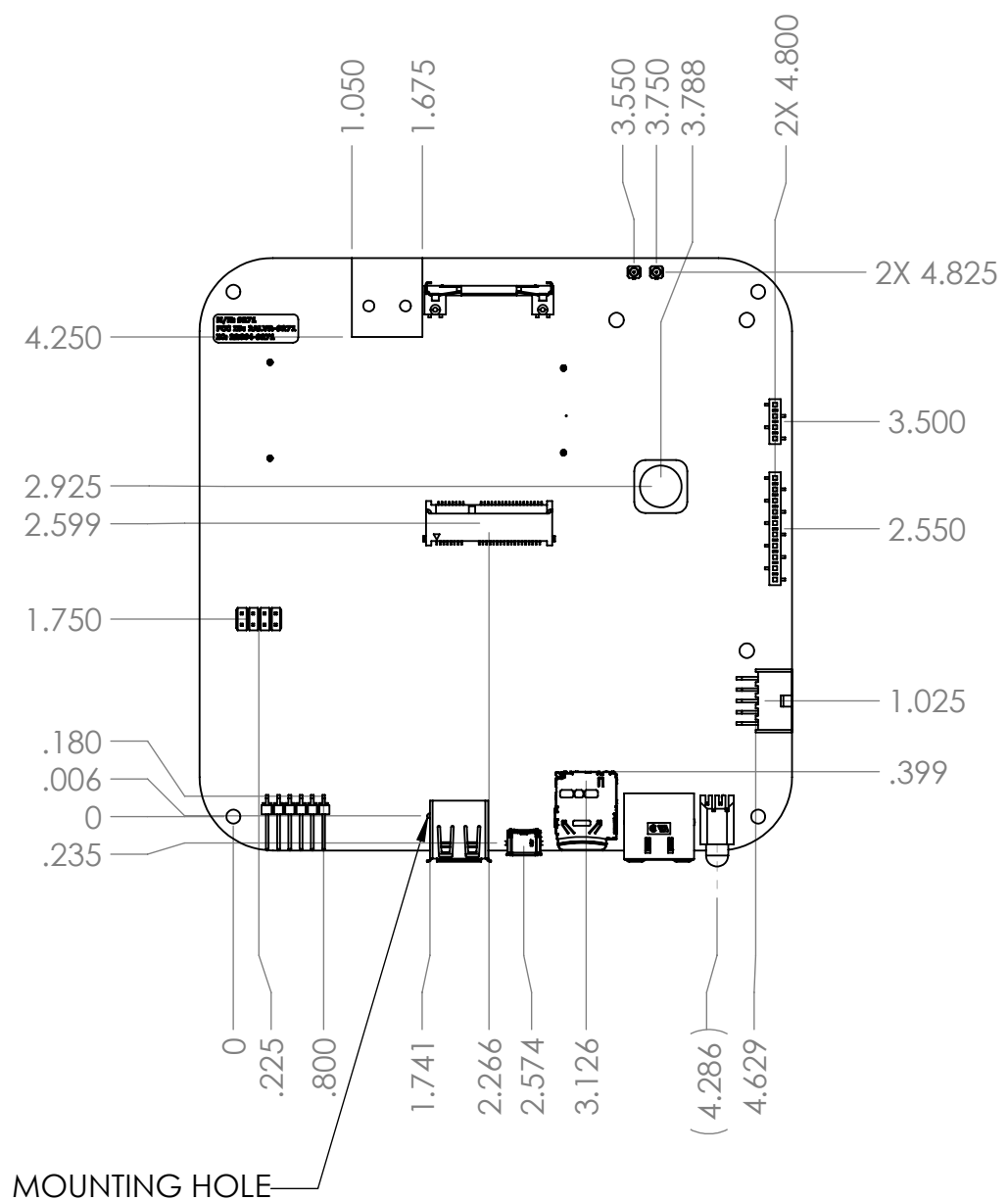
8 7 6 5 4 3 2 1

D

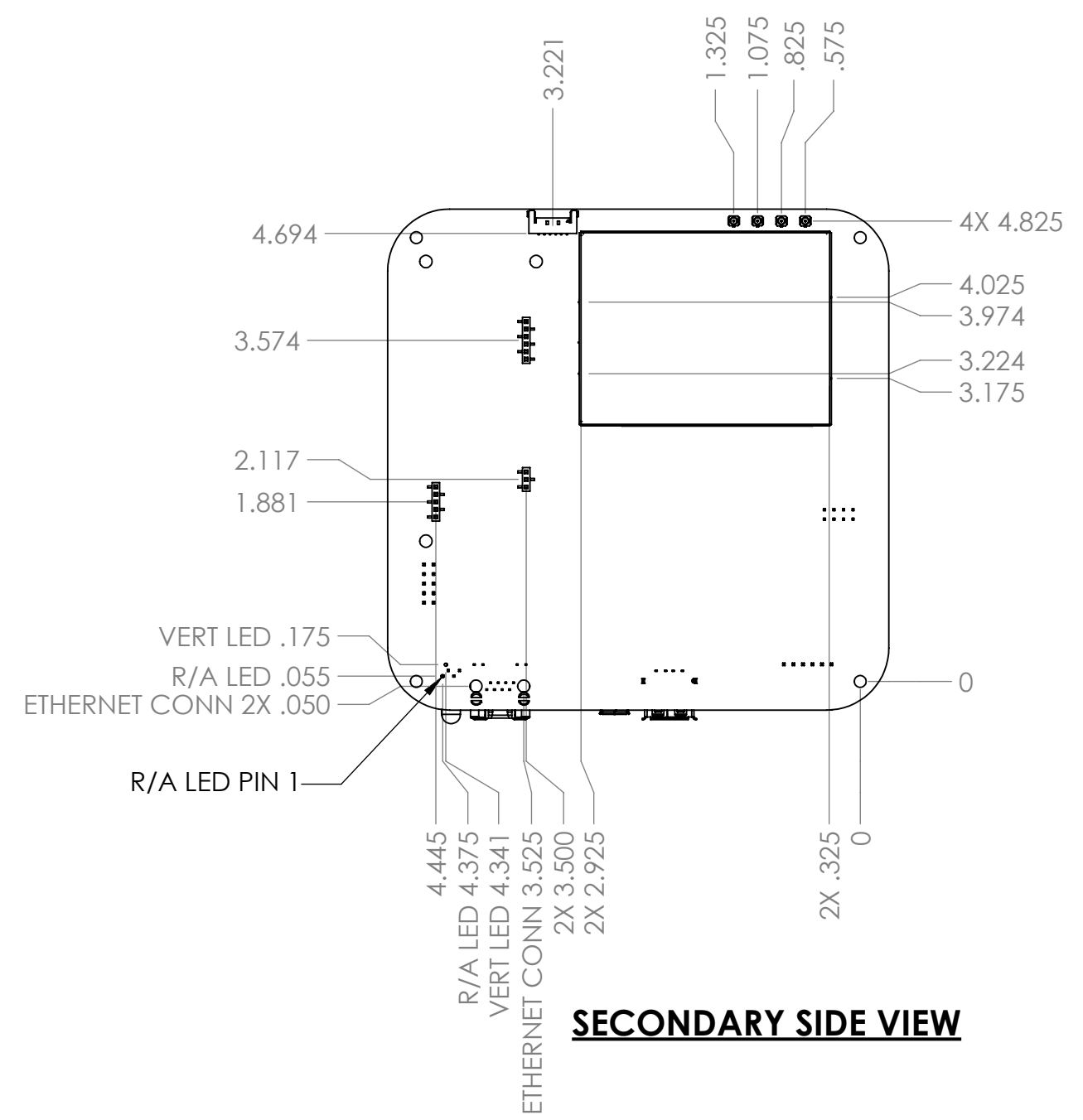
C

B

A



**PRIMARY SIDE VIEW**



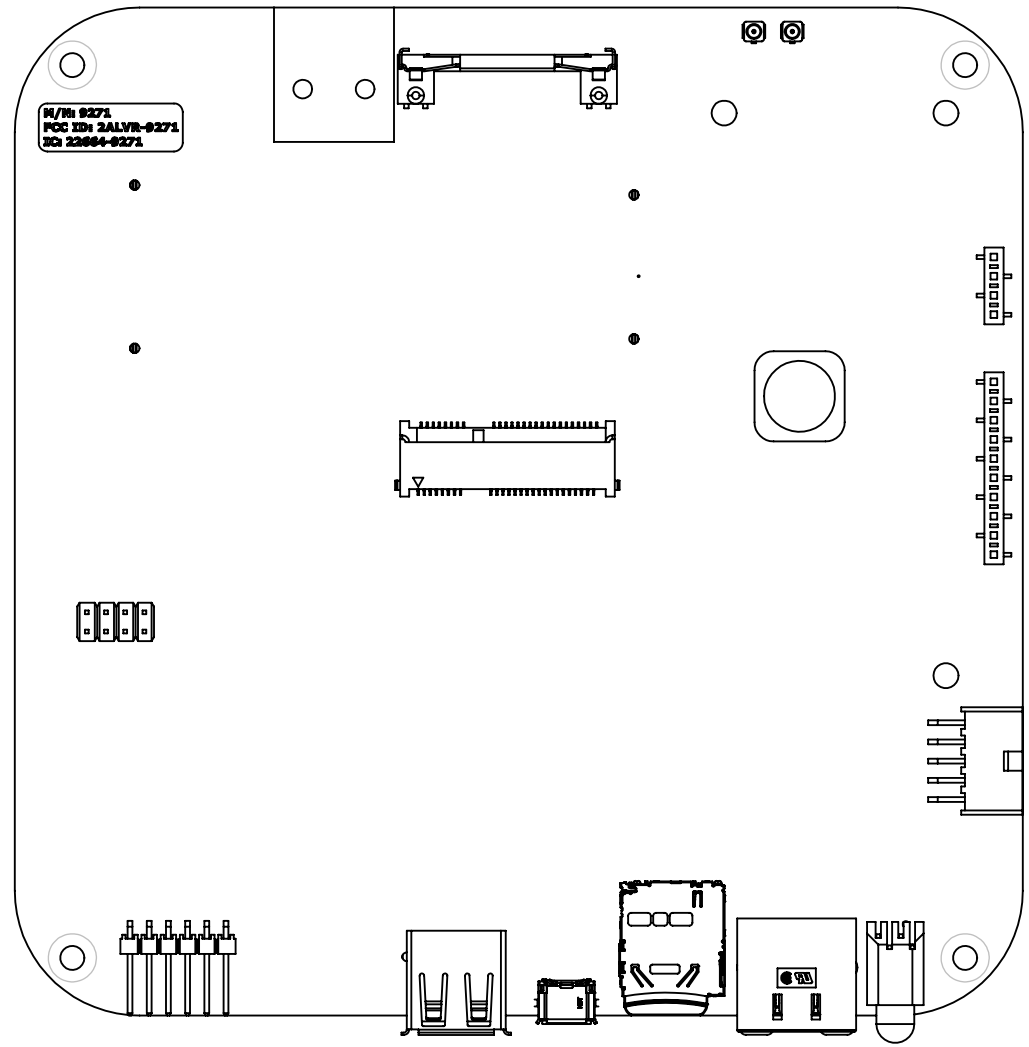
**SECONDARY SIDE VIEW**

<p><b>PROPRIETARY AND CONFIDENTIAL</b>          THE INFORMATION CONTAINED IN THIS DRAWING IS THE SOLE PROPERTY OF ENCINITAS LABORATORIES, INC. ANY REPRODUCTION IN PART OR AS A WHOLE WITHOUT THE WRITTEN PERMISSION OF ENCINITAS LABORATORIES, INC. IS PROHIBITED.</p>	SIZE	DWG. NO.	REV
	<b>B</b>	<b>9255</b>	<b>003</b>
	SCALE: 1:1	WEIGHT: x.x LBS	SHEET 3 OF 4

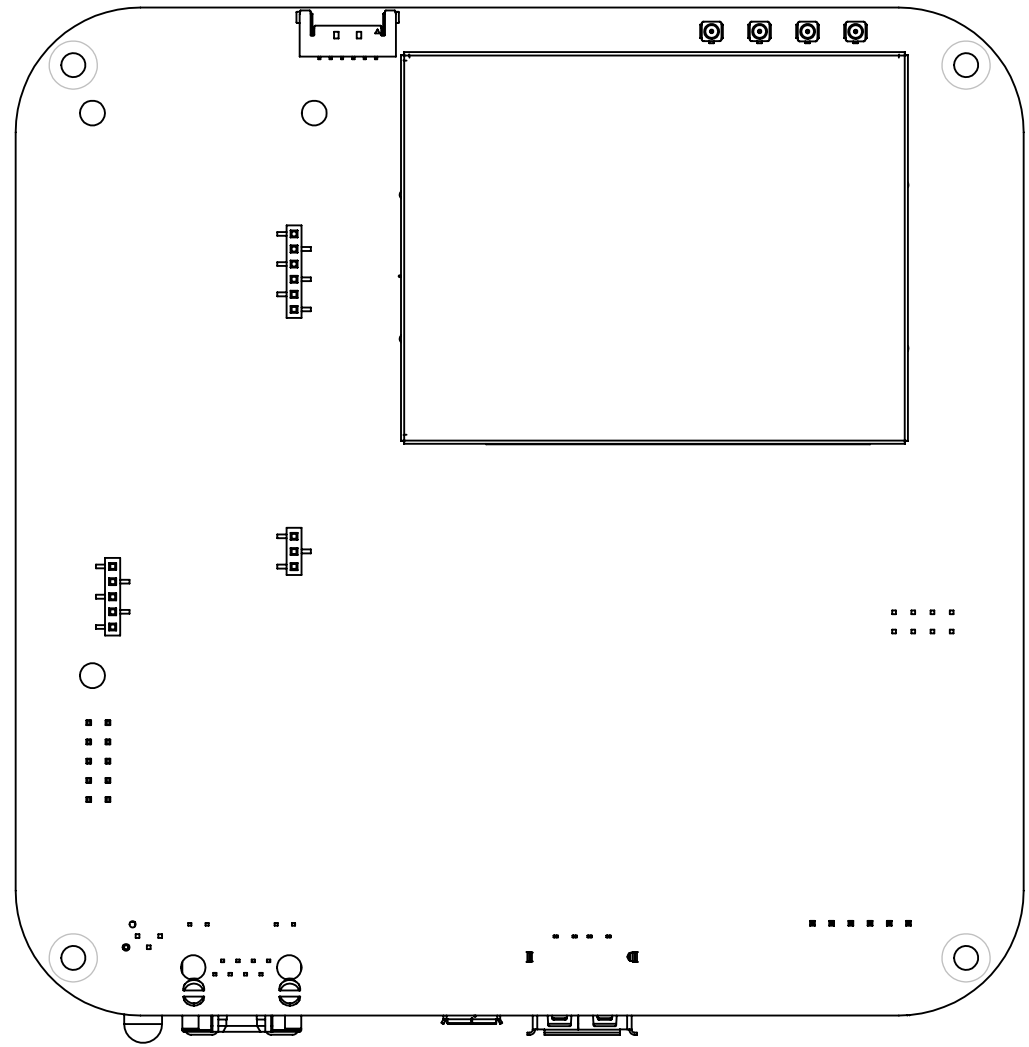
8 7 6 5 4 3 2 1

8 7 6 5 4 3 2 1

D  
C  
B  
A



**PRIMARY SIDE VIEW**  
 SCALE 1:1 FOR DXF GENERATION  
 (9271-3 SHOWN)



**SECONDARY SIDE VIEW**  
 SCALE 1:1 FOR DXF GENERATION  
 (9271-3 SHOWN)

8 7 6 5 4 3 2 1

<b>PROPRIETARY AND CONFIDENTIAL</b> THE INFORMATION CONTAINED IN THIS DRAWING IS THE SOLE PROPERTY OF ENCINITAS LABORATORIES, INC. ANY REPRODUCTION IN PART OR AS A WHOLE WITHOUT THE WRITTEN PERMISSION OF ENCINITAS LABORATORIES, INC. IS PROHIBITED.	SIZE	DWG. NO.	REV
	<b>B</b>	<b>9255</b>	<b>003</b>
	SCALE: 1:1	WEIGHT: x.x LBS	SHEET 4 OF 4