

Appendix B

Detailed Test Results

WIFI 2.4G for Body
WIFI 5G for Body
BT for Body

A0252B WIFI 2.4G 802.11b 1CH Right side 5mm Ant1**A0252B**

Communication System: WLAN 2.4GHz; Frequency: 2412.000

Medium: HSL. Medium parameters used: $f= 2412.000$ MHz; $\sigma= 1.77$ S/m; $\epsilon_r = 40.6$

DASY 5 Configuration:

Probe: EX3DV4 - SN7838; ConvF(6.95, 6.95, 6.95); Calibrated: 2023/09/11

Sensor-Surface: 1.4mm (Mechanical Surface Detection)

Electronics: DAE4 Sn1830; Calibrated: 2023/09/12

Phantom: SAM 8.0; Type: SAM Twin; Serial: 2256

DASY52 52.10.4(1527); SEMCAD X 14.6.14(7483)

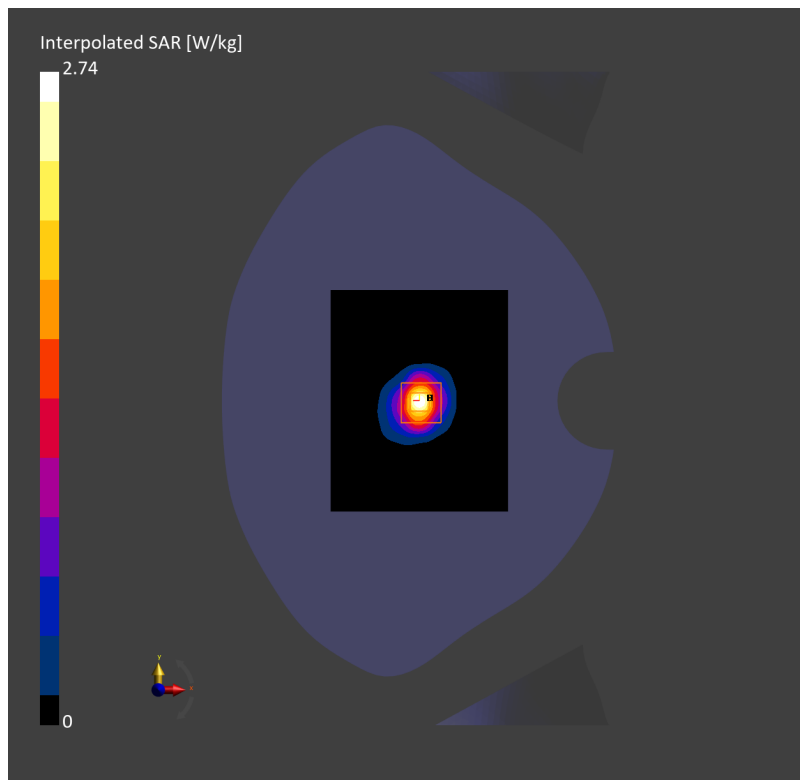
Area Scan (96.0 mm x 120.0 mm): Measurement Grid: 12.0 mm x 12.0 mm

SAR (1g) = 1.27 W/kg; SAR (10g) = 0.544 W/kg;

Zoom Scan (30.0 mm x 30.0 mm x 30.0 mm): Measurement Grid: 5.0 mm x 5.0 mm x 5.0 mm

Power Drift = -0.05 dB

SAR (1g) = 1.30 W/kg; SAR (10g) = 0.562 W/kg;



A0252B WIFI 5G 802.11n-HT20 36CH Right side 5mm Ant1**A0252B**

Communication System: WLAN 5GHz; Frequency: 5180.000

Medium: HSL. Medium parameters used: $f = 5180.000$ MHz; $\sigma = 4.63$ S/m; $\epsilon_r = 36.5$

DASY 5 Configuration:

Probe: EX3DV4 - SN7838; ConvF(6.95, 6.95, 6.95); Calibrated: 2023/09/11

Sensor-Surface: 1.4mm (Mechanical Surface Detection)

Electronics: DAE4 Sn1830; Calibrated: 2023/09/12

Phantom: SAM 8.0; Type: SAM Twin; Serial: 2256

DASY52 52.10.4(1527); SEMCAD X 14.6.14(7483)

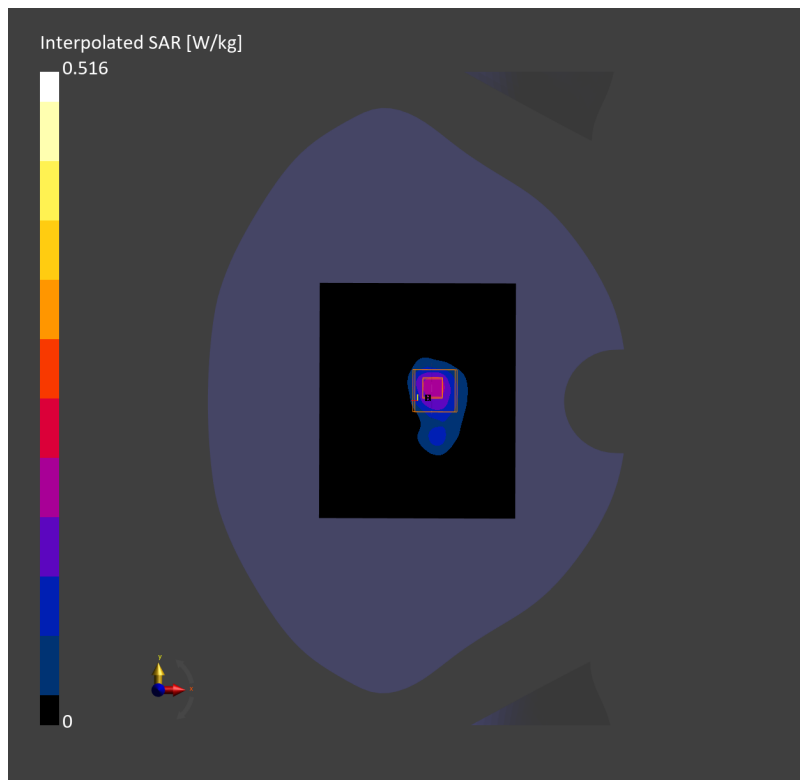
Area Scan (100.0 mm x 120.0 mm): Measurement Grid: 10.0 mm x 10.0 mm

SAR (1g) = 0.149 W/kg; SAR (10g) = 0.053 W/kg;

Zoom Scan (24.0 mm x 24.0 mm x 22.0 mm): Measurement Grid: 4.0 mm x 4.0 mm x 2.0 mm

Power Drift = -0.02 dB

SAR (1g) = 0.167 W/kg; SAR (10g) = 0.051 W/kg;



A0252B Bluetooth BLE 1M 39CH Top side 5mm Ant0**A0252B**

Communication System: ISM 2.4 GHz Band; Frequency: 2480.000

Medium: HSL. Medium parameters used: $f = 2480.000$ MHz; $\sigma = 1.86$ S/m; $\epsilon_r = 39.1$

DASY 5 Configuration:

Probe: EX3DV4 - SN7838; ConvF(6.95, 6.95, 6.95); Calibrated: 2023/09/11

Sensor-Surface: 1.4mm (Mechanical Surface Detection)

Electronics: DAE4 Sn1830; Calibrated: 2023/09/12

Phantom: SAM 8.0; Type: SAM Twin; Serial: 2256

DASY52 52.10.4(1527); SEMCAD X 14.6.14(7483)

Area Scan (96.0 mm x 192.0 mm): Measurement Grid: 12.0 mm x 12.0 mm

SAR (1g) = 0.151 W/kg; SAR (10g) = 0.067 W/kg;

Zoom Scan (30.0 mm x 30.0 mm x 30.0 mm): Measurement Grid: 5.0 mm x 5.0 mm x 5.0 mm

Power Drift = -0.06 dB

SAR (1g) = 0.166 W/kg; SAR (10g) = 0.071 W/kg;

