

Specification

Manufacture: Shenzhen Si Xun communication Technology Co., LTD
Address: A505/506, Donglian Building, Chuangye 2nd Road, Dalang
Community, Xin 'an Street, Bao 'an District, Shenzhen

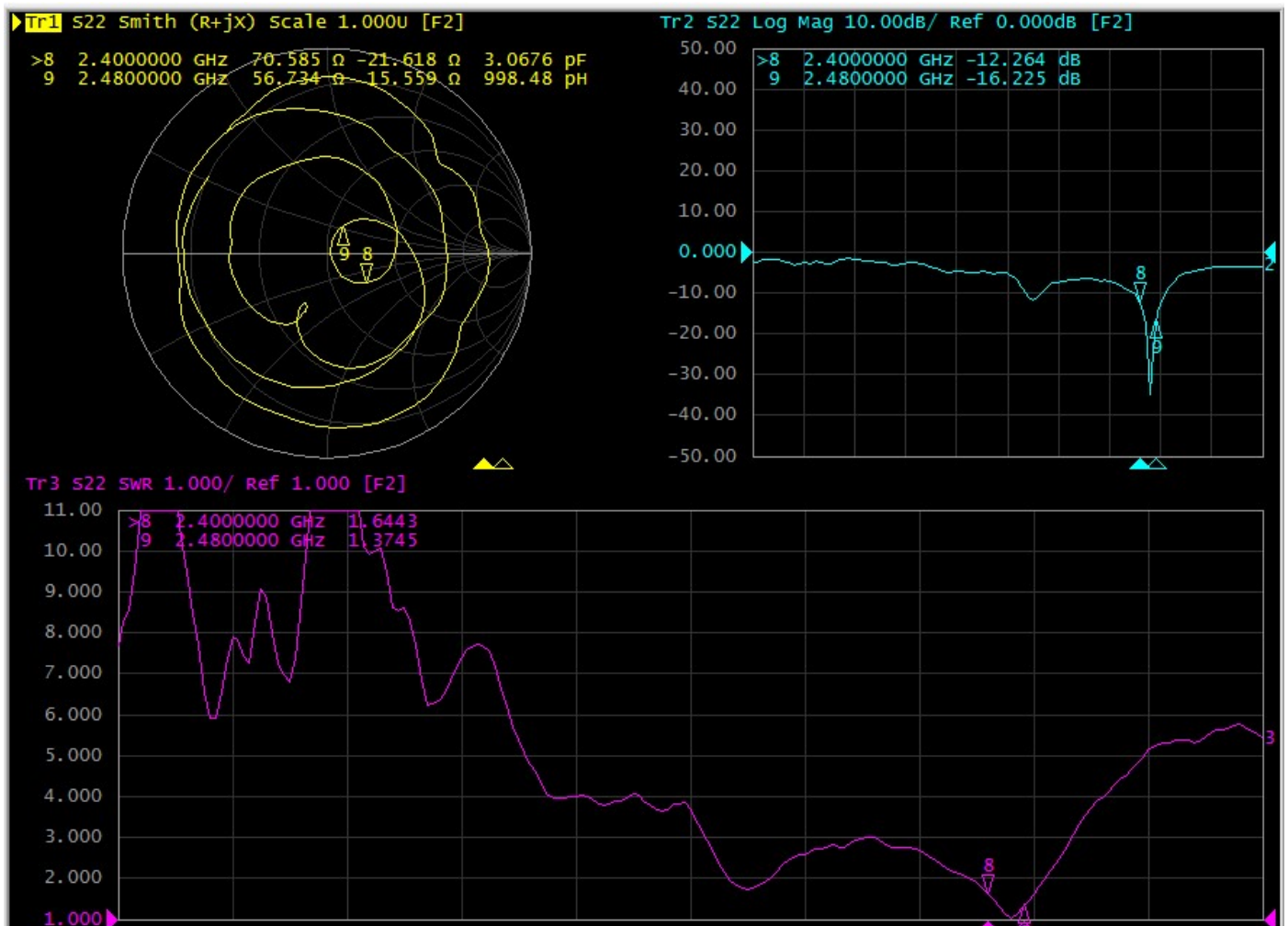
Client:	Cosonic
Project:	CA-7583B
Name:	BT/WIFI Antenna
Type:	dipole Antenna
Version:	V1.0
Date:	2023.12.12

一: Passive test report

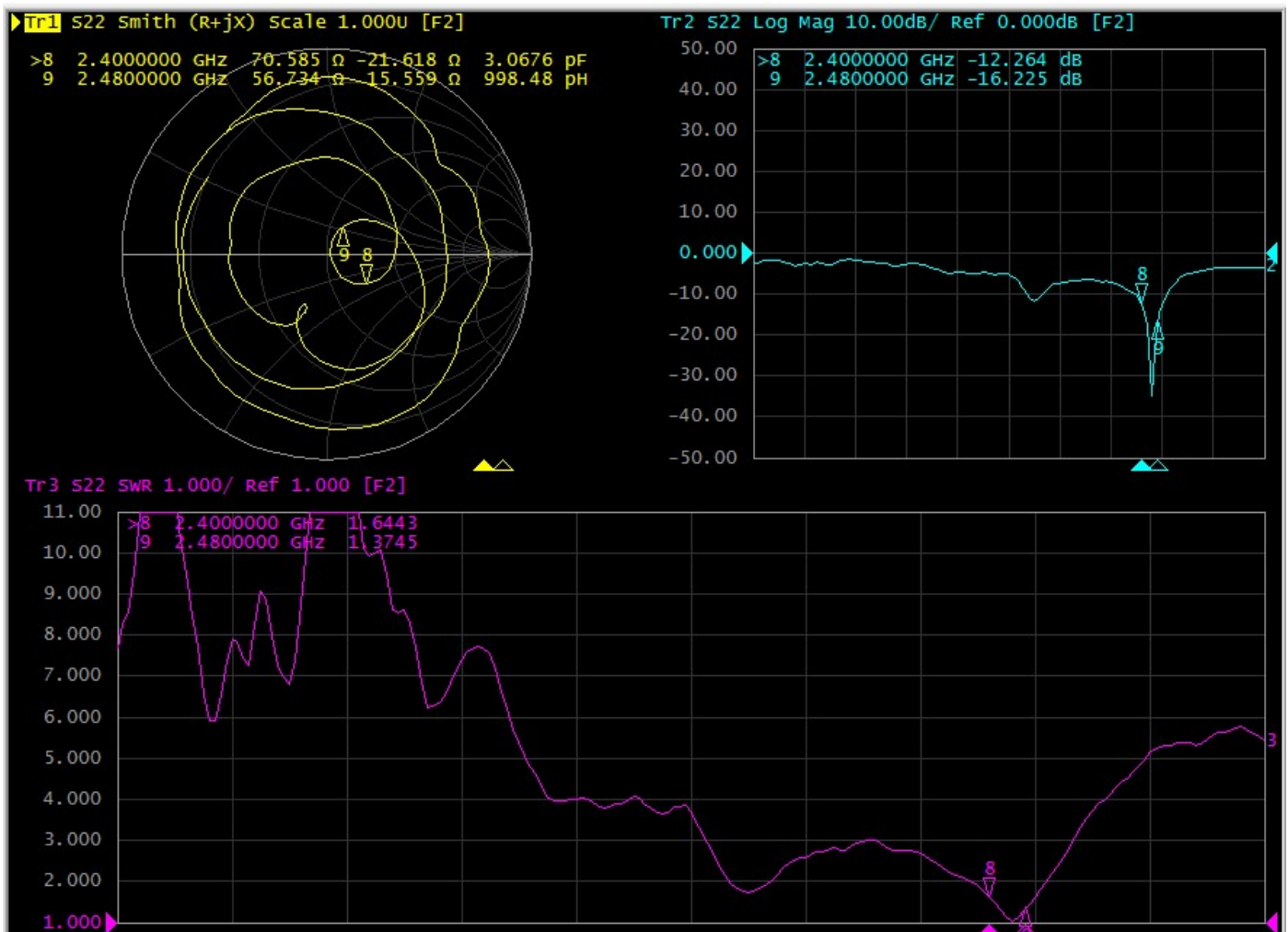


Agilent E5071C

BT Antenna S11 parameter



WiFi Antenna S11 parameter



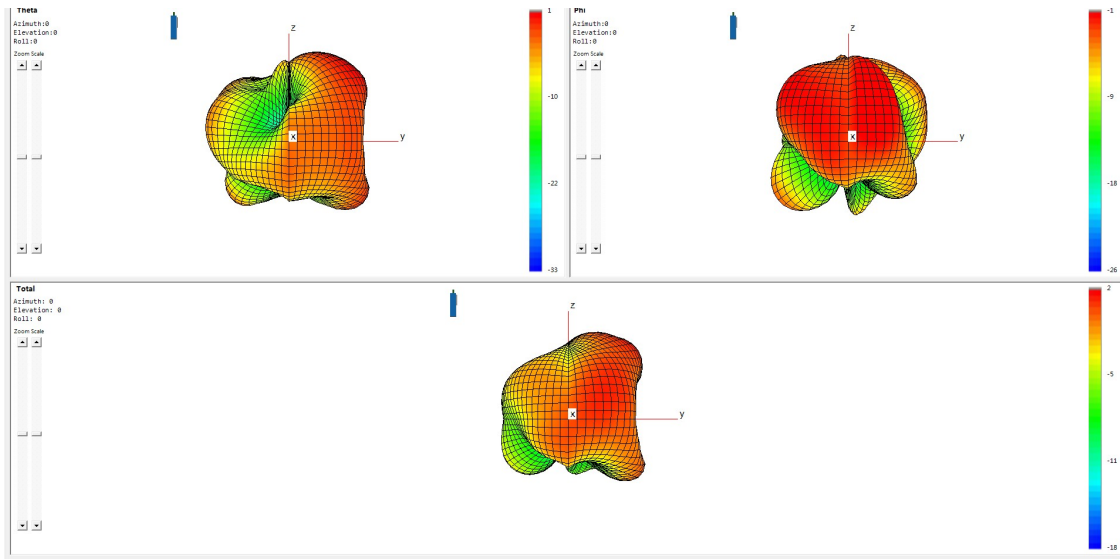
BT Antenna efficiency and gain:

BT			
Frequency MHz	GAIN(dBi)	efficiency(dB)	efficiency (%)
2400	1.6	-2.9	50.8
2410	1.5	-2.9	51.5
2420	1.4	-2.8	51.9
2430	1.2	-3.0	50.2
2440	1.1	-3.1	48.6
2450	1.3	-3.1	49.5
2460	1.2	-3.2	47.7
2470	1.4	-3.0	49.9
2480	1.7	-2.8	52.0
Average	1.4	-3.0	50.2

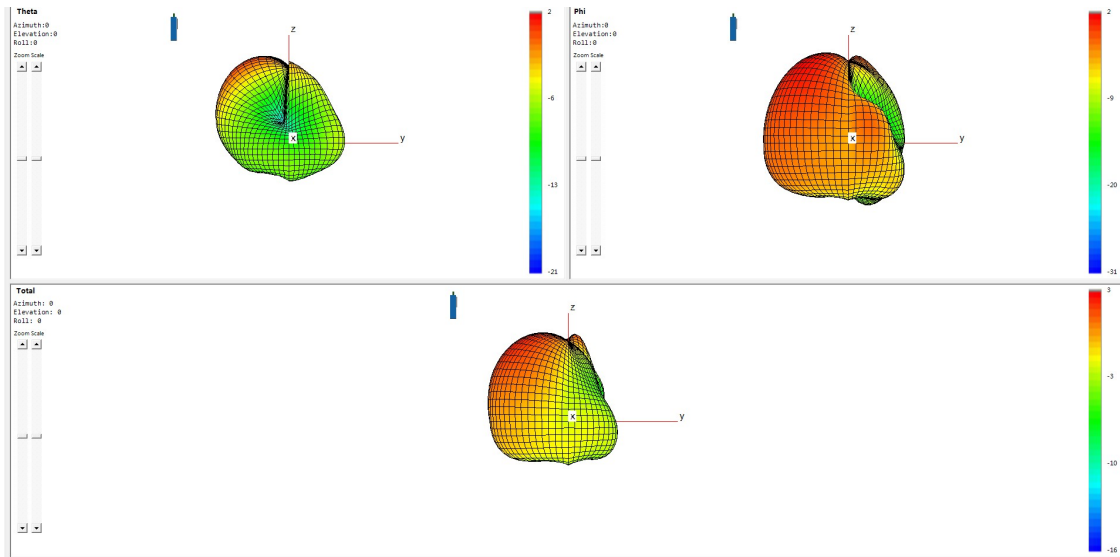
WIFI Antenna efficiency and gain:

WIFI							
Frequency MHz	GAIN(dBi)	efficiency(dB)	efficiency (%)	Frequency MHz	GAIN(dBi)	efficiency(dB)	efficiency (%)
2400	3.2	-2.9	51.3	5150	2.5	-2.7	53.5
2410	3.2	-2.8	51.9	5200	2.5	-3.0	49.8
2420	3.3	-2.8	52.6	5250	2.5	-3.1	49.4
2430	3.1	-2.9	50.8	5300	2.6	-2.8	52.7
2440	2.7	-3.1	48.6	5350	2.5	-3.0	50.0
2450	2.8	-3.0	49.6	5400	2.5	-3.2	47.7
2460	2.6	-3.2	48.3	5450	2.4	-3.3	46.5
2470	2.7	-2.9	51.4	5500	2.6	-2.7	53.5
2480	2.7	-2.7	54.0	5550	2.7	-2.8	53.0
Average	2.9	-2.9	50.9	5600	2.3	-3.0	50.1
				5650	2.1	-3.3	47.1
				5700	2.3	-3.1	48.7
				5750	3.0	-2.7	54.2
				5800	3.1	-2.8	52.0
				5850	3.2	-2.7	53.6
				Average	2.6	-2.9	50.8

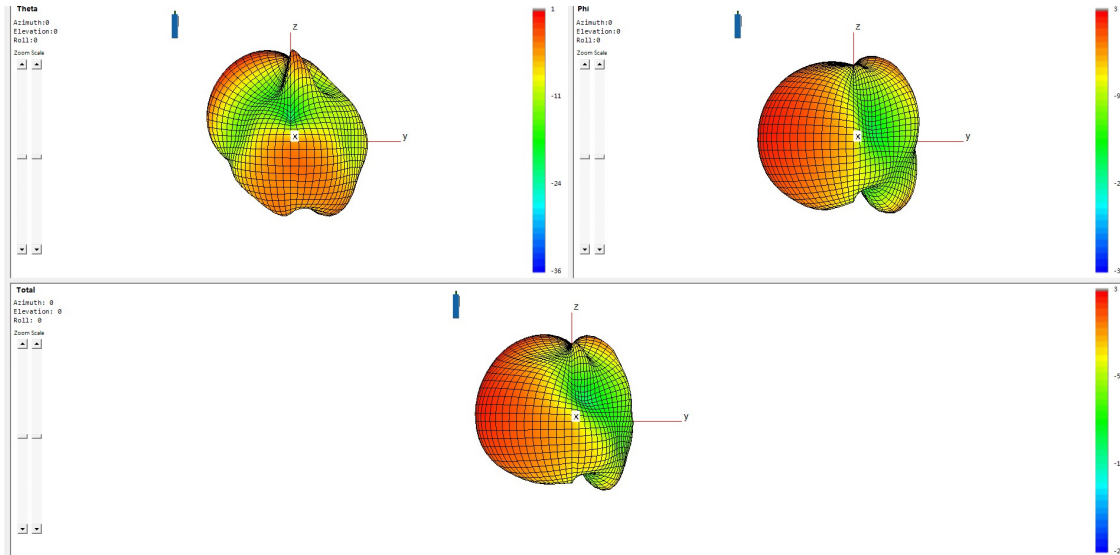
BT Antenna 3D radiation pattern:



WIFI 2.4G Antenna 3D radiation pattern:



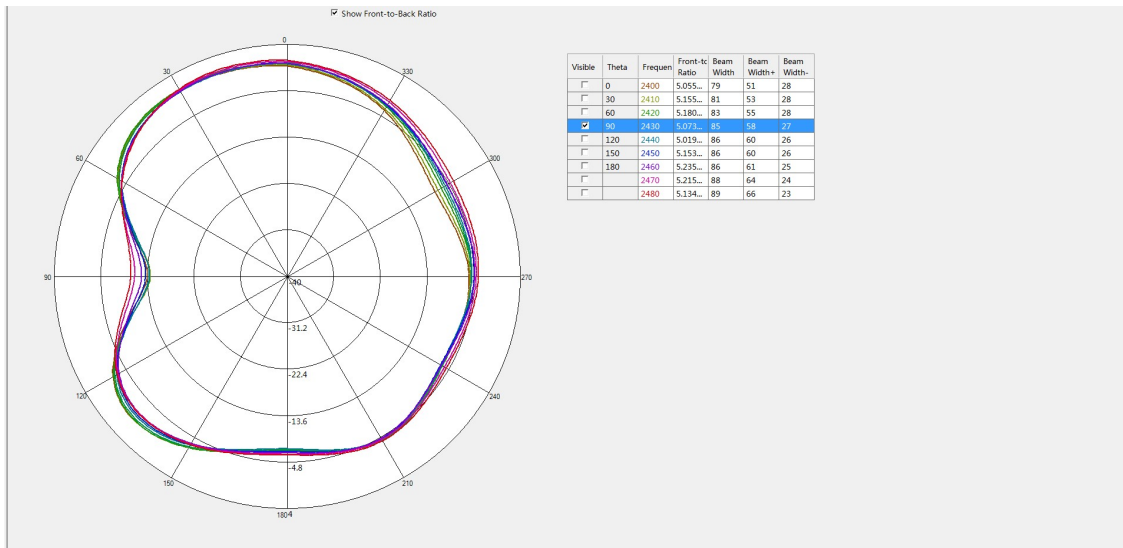
WIFI 5G Antenna 3D radiation pattern:



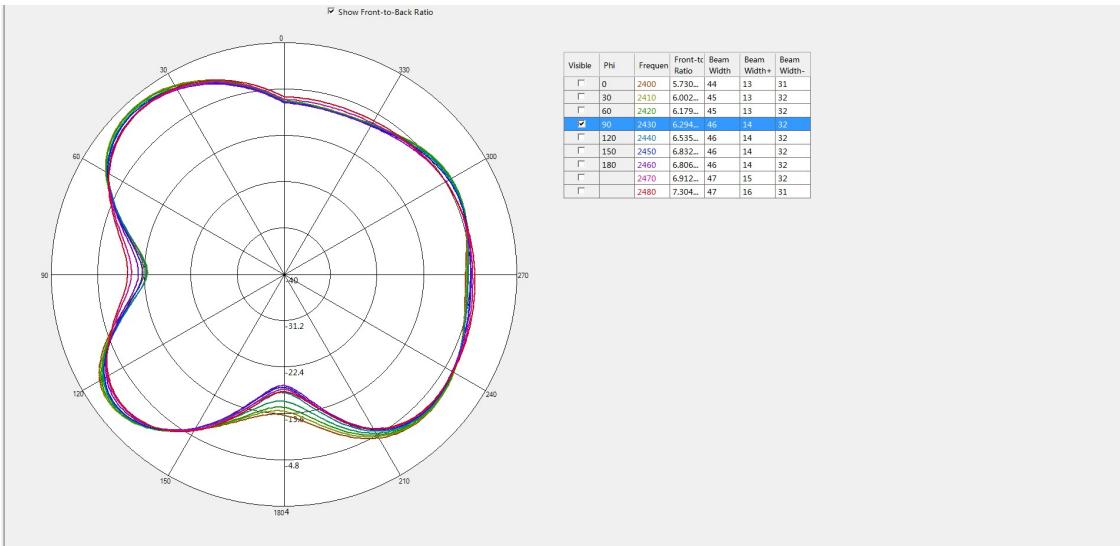


BT Antenna 2D radiation pattern:

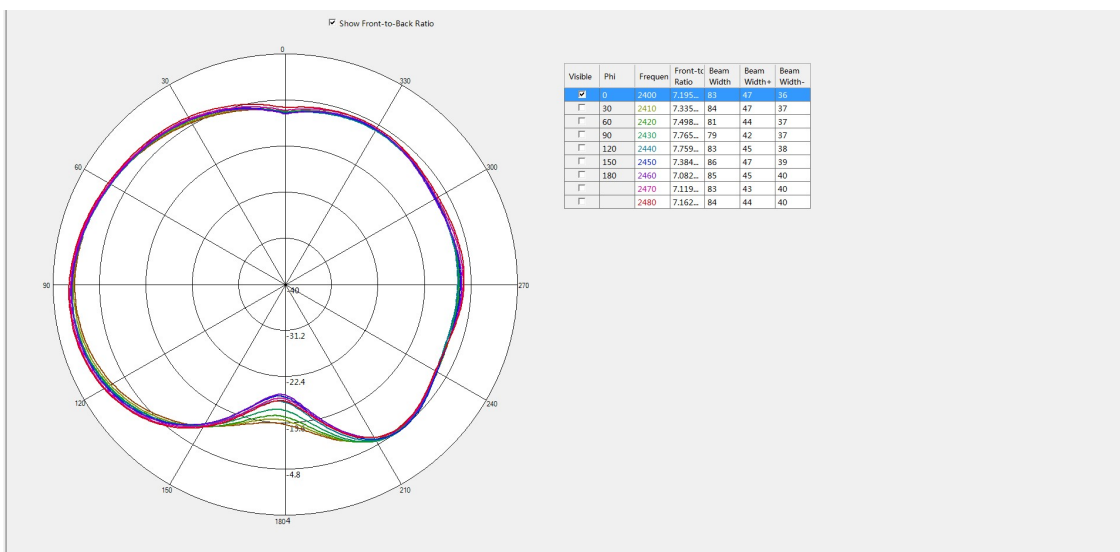
Theta=90.00deg



Phi=90.00deg

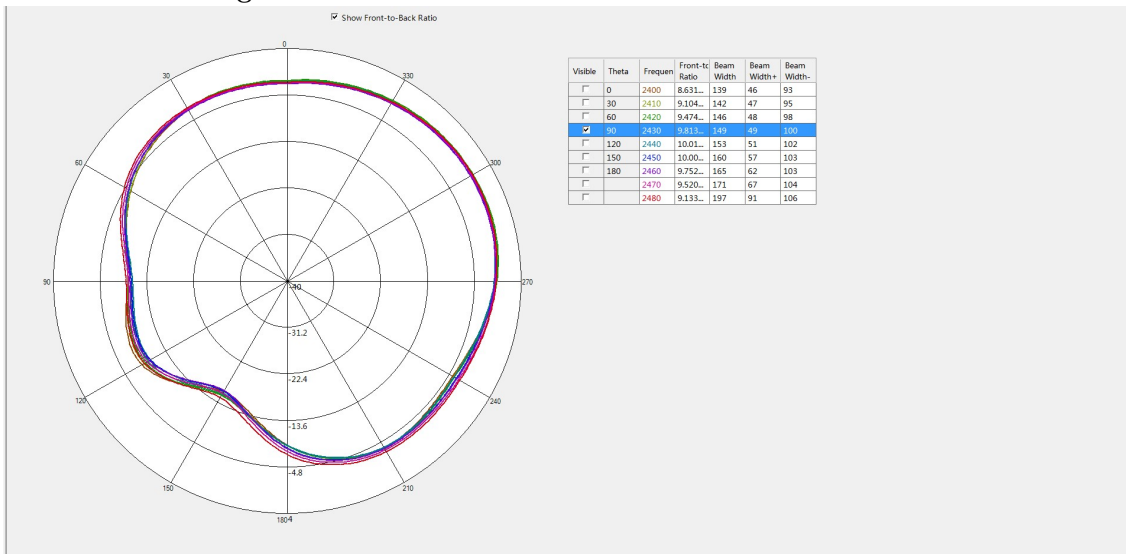


Phi=0.00deg

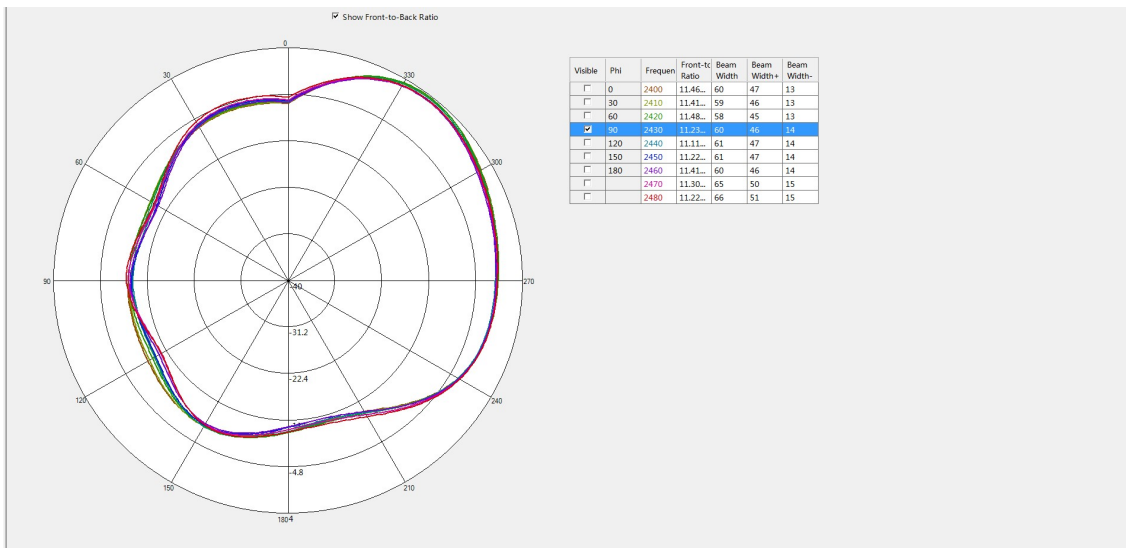


WiFi Antenna 2D radiation pattern

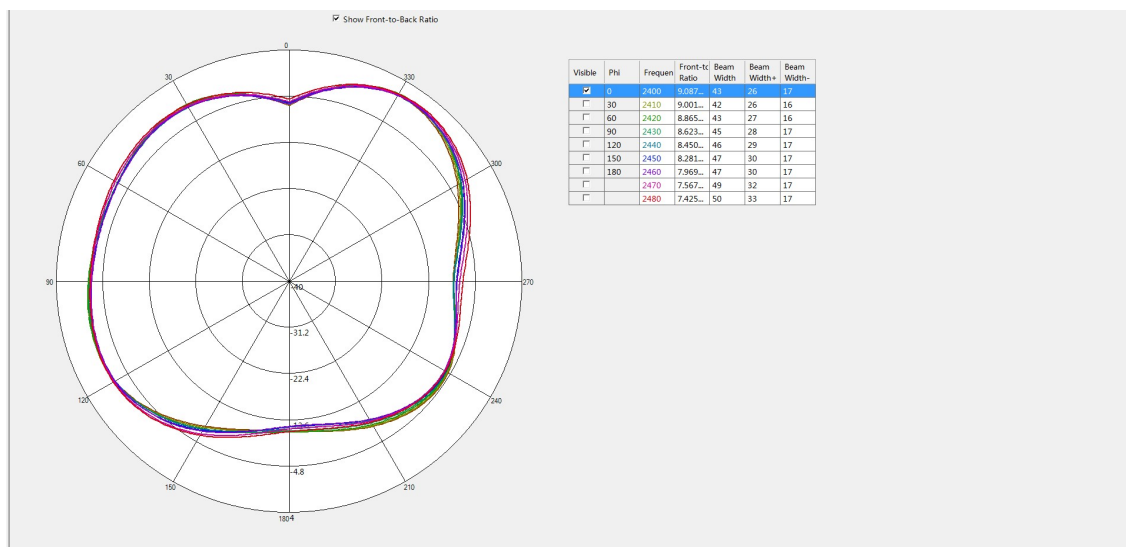
Theta=90.00deg



Phi=90.00deg

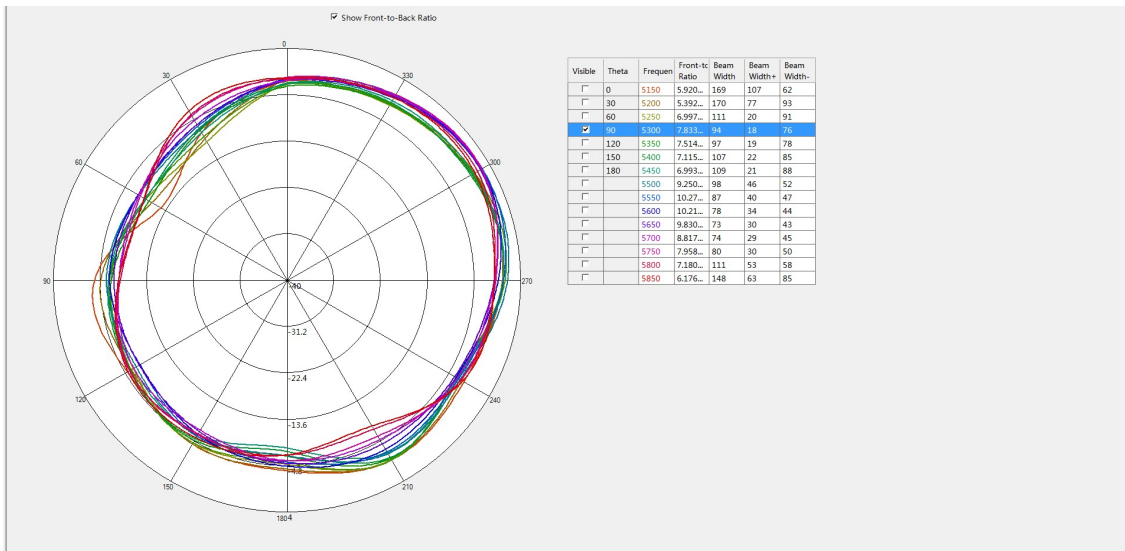


Phi=0.00deg

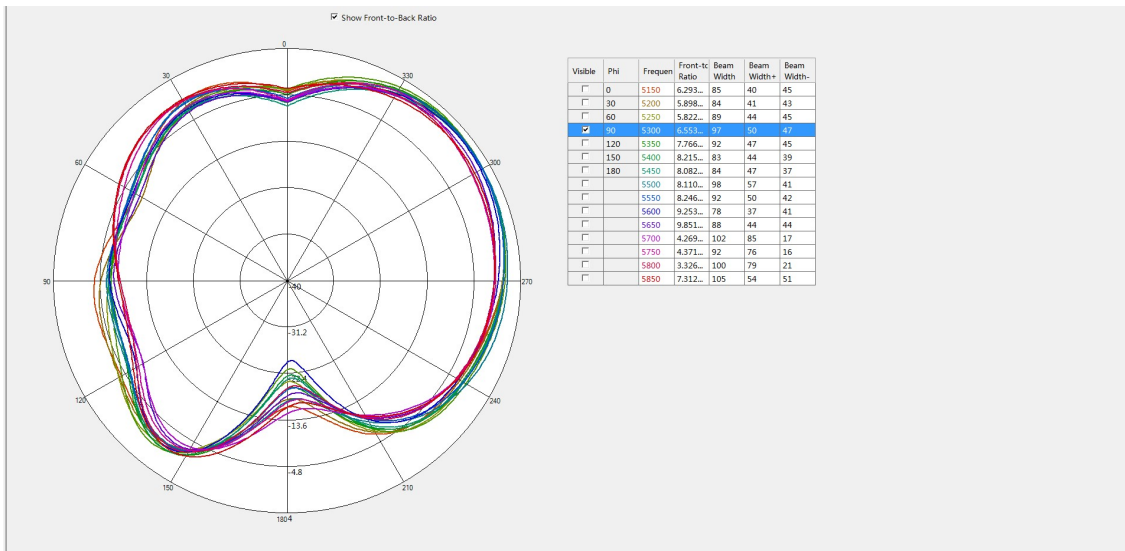


WIFI 5G Antenna 2D radiation pattern

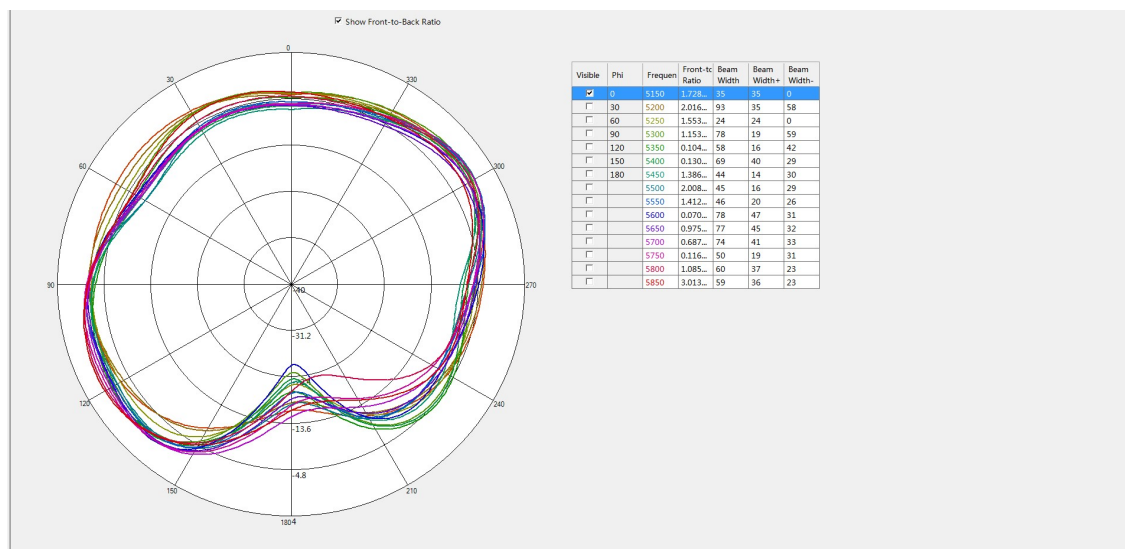
Theta=90.00deg



Phi=90.00deg



Phi=0.00deg



二: BT Antenna 3D OTA Test Data

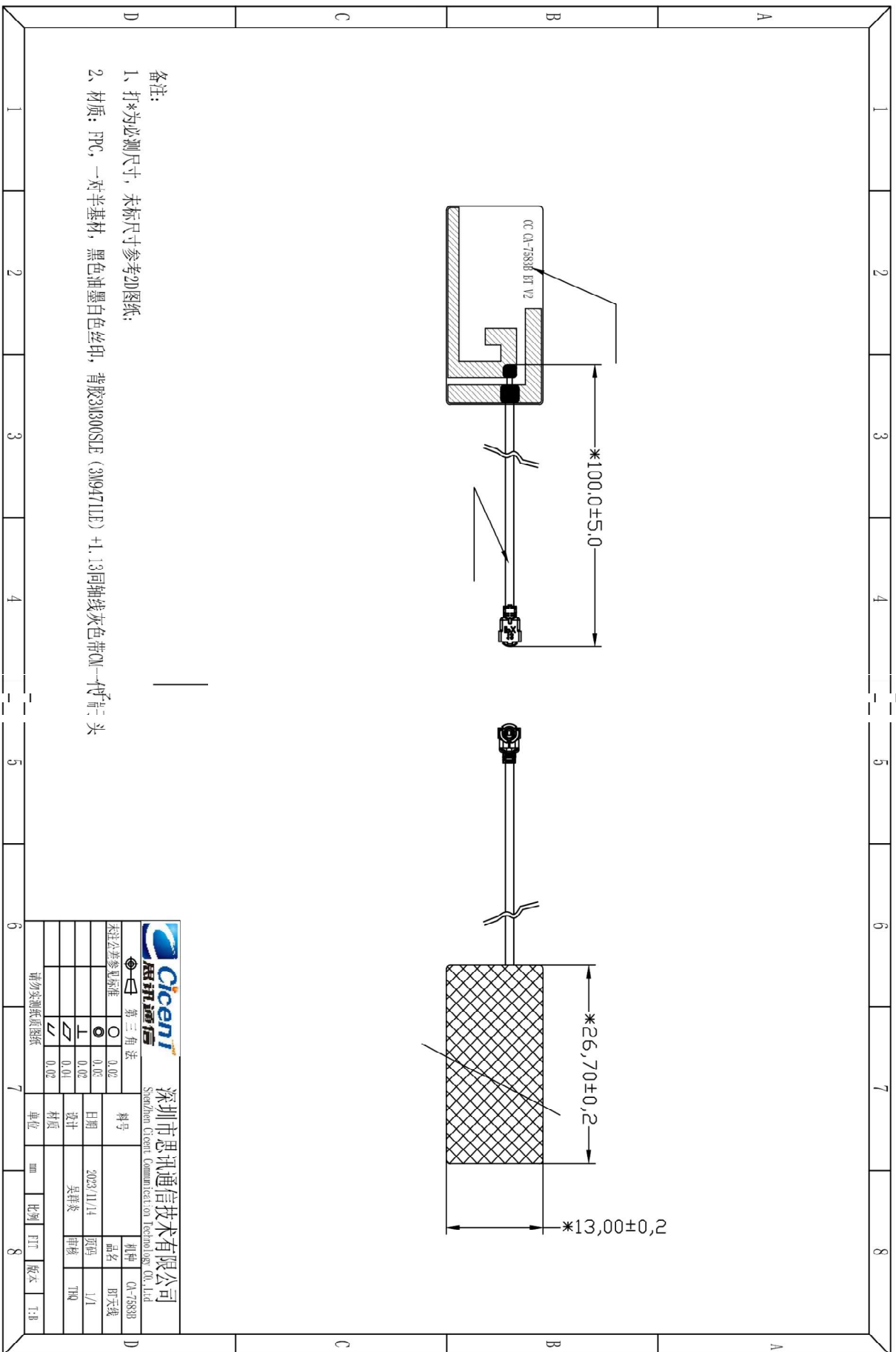
	Channel	TRP (dBm)	TIS (dBm)
BT	CH 0	4.9	-91.3
	CH 39	4.7	-91.8
	CH 78	4.3	-90.1

	Channel	TRP (dBm)	TIS (dBm)
WIFI A	CH 36	9.6	-66.3
	CH 100	6.4	-68.1
	CH 165	7.9	-66.0

	Channel	TRP (dBm)	TIS (dBm)
WIFI B	CH 1	14.7	-83.0
	CH 6	14.8	-84.4
	CH 11	14.1	-84.5



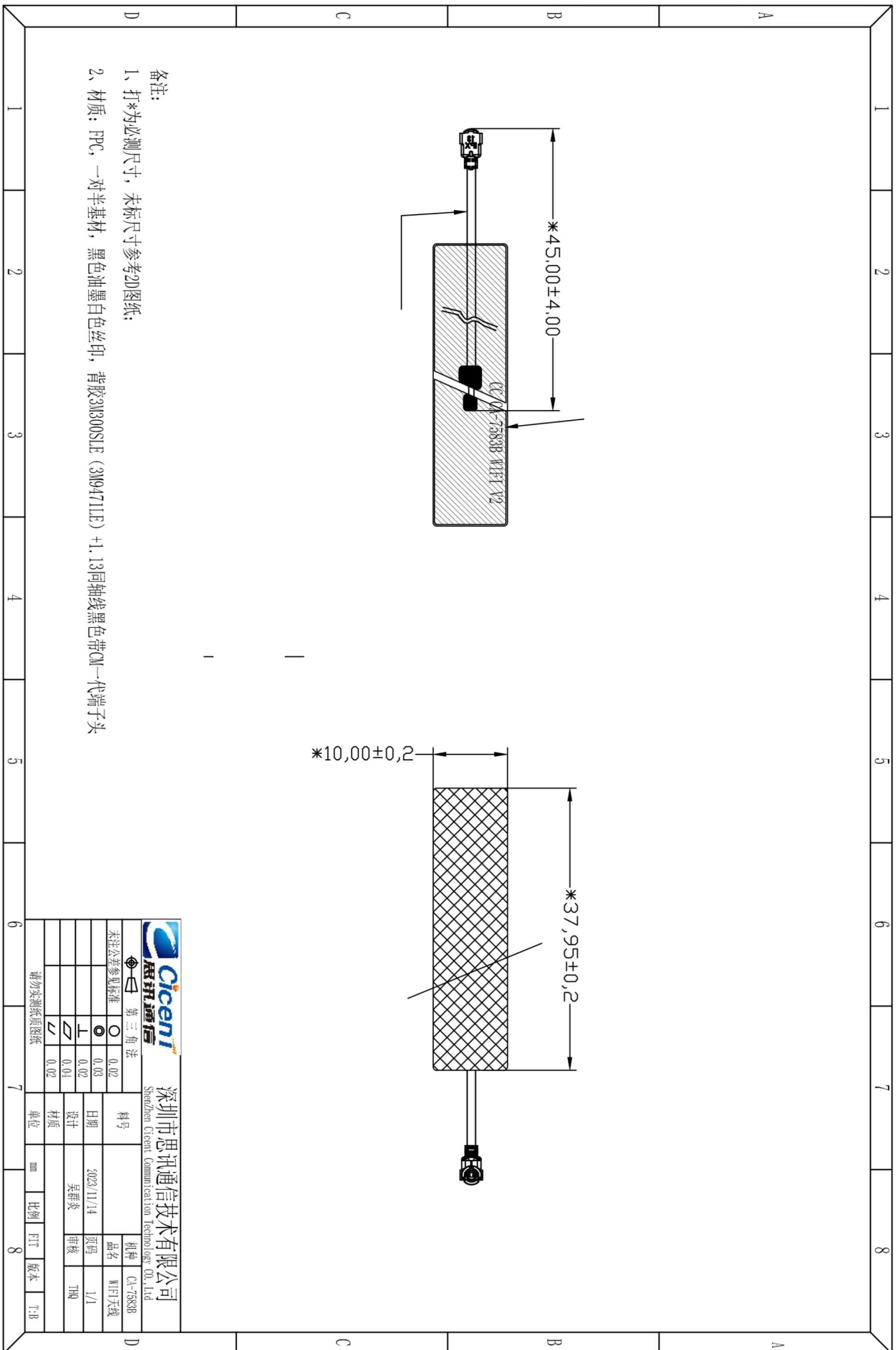
OTA Standard Chamber



备注:

1、打*为必测尺寸，未标尺寸参考2D图纸;

2、材质：FPC，一对半基材，黑色油墨白色丝印，背胶3M300SLE (3M9471LE) +1.13同轴线灰色带CM一代终端头



备注:

- 1、打*为必测尺寸，未标尺寸参考2D图纸;
- 2、材质: FPC, 一对半基材, 黑色油墨白色丝印, 背胶3M300SLE (3M9471LE) +1.13同轴线黑色带CM一代端子头