

GRAVITY PHONE HOLDER & WIRELESS CHARGER



USER'S MANUAL

2018.12.27
VERSION 1.2.4

GETTING STARTED

For optimal mounting and charging, please follow the detailed instruction within this manual when using the Qi Wireless Fast Charging Dash & Windshield Mount. is not liable for possible damages due to product misuse.

Critical Information

Compatibility

Before using product, make sure your device is Qi Wireless compatible. Compatible devices include Samsung Galaxy: S8, S8 Plus, Note 8, or iPhone X, 8, 8 Plus, and other Qi enabled smartphones. Please note that not all smartphones can receive a wireless Fast Charge, however they will still receive a standard wireless charge. Check your phone's charging features for Fast Charge capabilities.

Qi Fast Charging in Vehicle

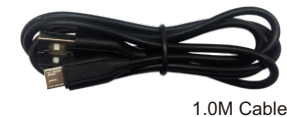
If you do use a third party car charger, use a Qualcomm Quick Charge 2.0 or equivalent adapter to receive Fast Charge (with compatible devices).

This Wireless Charging mount's signal could possibly interfere with your TPMS (tire pressure monitoring system). If you notice that your TPMS light turns on, please try to use your mount in different locations to avoid the signals from interacting.

Qi Fast Charging on Desk

Use a USB Power Adapter with a minimum output of both "9.0V-1.67A or 5.0V-2.0A". Plug directly into wall or surge protector. Inserting into laptop or computer will not provide adequate power.

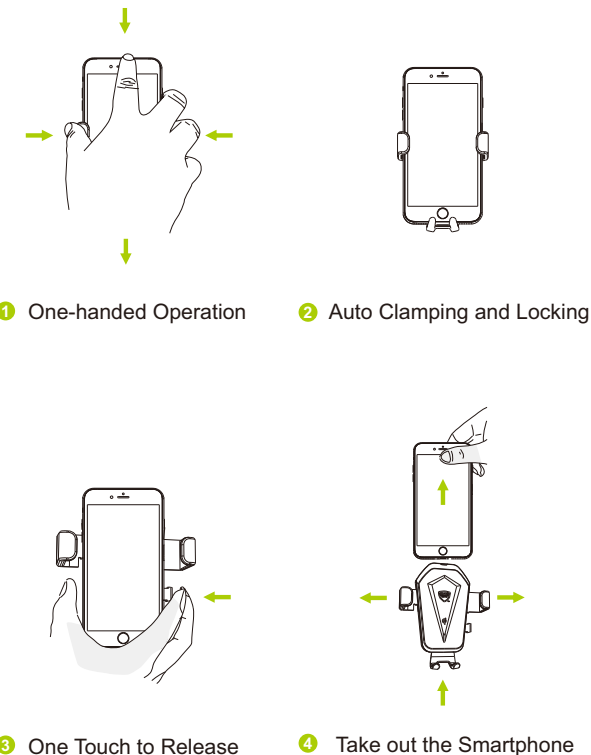
EXPLORING



1.0M Cable

- Gravity Auto Clamp/Lock with One-Touch Release
- Built-in Qi Wireless Charging Technology
- Model: VCW-502K
- Input: 5V=2A 9V=1.67A 12V=1.5A
- Baseline Power Profile: 5W
- QC Support: QC2.0
- Compatible QI Version: 1.2.4
- FCC ID: 2ALU4DX502A04

KEY FEATURES



CHARGING INDICATOR

Your device's screen will show that it is charging.

Power-on : red lamp flickered, blue lamp flickered, red and blue lamps flickered simultaneously.

Standby: red and blue lamps are lights out.

Full charge: red and blue lamps lighting together (requires the support from the receiving end).

Fault indication status:

FOD: red and blue lamps flicker alternately.

Input voltage / coil voltage overvoltage: red and blue lamps flicker alternately.

Over temperature: red lamp flickers.

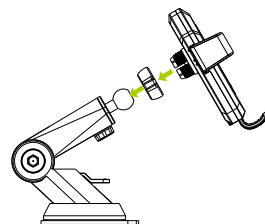
PS: indicator status can be customized according to customer's requirements.

Qi Wireless Fast Charging

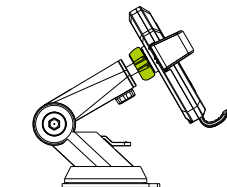
Charge up to **40% faster** than standard wireless charging



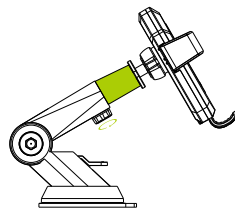
ASSEMBLING MOUNT



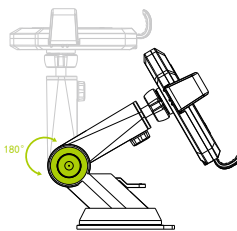
- 1 Remove Cradle Knob from back of Cradle and place over ball joint into the Mount Base.



- 2 Tighten Cradle Knob.



- 3 Loosen the telescopic knob to extend the arm, and tighten to secure distance.



- 4 Loosen the side knob to pivot the view angle and tighten to secure position.

Suction cup base provides a strong secure hold on dash's, windshield, desks, tables and other surfaces.

DECLARATION OF CONFORMITY (FCC)

This device complies with Part 18 of the FCC Rules.

CAUTION: Changes or modifications not expressly approved by the party responsible for compliance could void the user's authority to operate the product.

NOTE: This equipment has been tested and found to comply with the limits for a wireless power charger, pursuant to Part 18 of the FCC Rules. These limits are designed to provide reasonable protection against harmful interference in a residential installation. This equipment generates, uses and can radiate radio frequency energy and, if not installed and used in accordance with the instructions, may cause harmful interference to radio communications. However, there is no guarantee that interference will not occur in a particular installation. If this equipment does cause harmful interference to radio or television reception, which can be determined by turning the equipment off and on, the user is encouraged to try to correct the interference by one or more of the following measures:

- Reorient or relocate the receiving antenna.
- Increase the separation between the equipment and receiver.
- Connect the equipment into an outlet on a circuit different from that to which the receiver is connected.
- Consult the dealer or an experienced radio/TV technician for help.

OPERATIONAL WARNINGS

1) During the charging process, the transfer of electricity gives off heat. Your device may become warm, but should not become exceedingly hot.

2) If the device gets wet please cease charging immediately Remove all plugs and dry the product completely Device is only to be operated in a dry indoor environment.

3) Please be careful of excessive drops, dents, punctures , or deformities on the device. If you are concerned, please unplug the device and contact the manufacturer.

4) Changes or modifications not expressly approved by the party responsible for compliance could void the user's authority to operate the equipment .

5) Operating this device in a hot environment or in direct sunlight for a long period of time may cause malfunctions. We recommend keeping the product in cooler temperatures.

6) Please use included components for an optimal experience To support Qi fast charge when using a third party car charger or a USB Power Adapter use a minimum output of both "9.0V-1.67A or 5.0V-2.0A".

7) The product's signal could possibly interfere with you TPMS (tire pressure monitoring system) If you notice that your TPMS light turns on, please try using your mount in different locations to avoid the signals from interfering with each other.