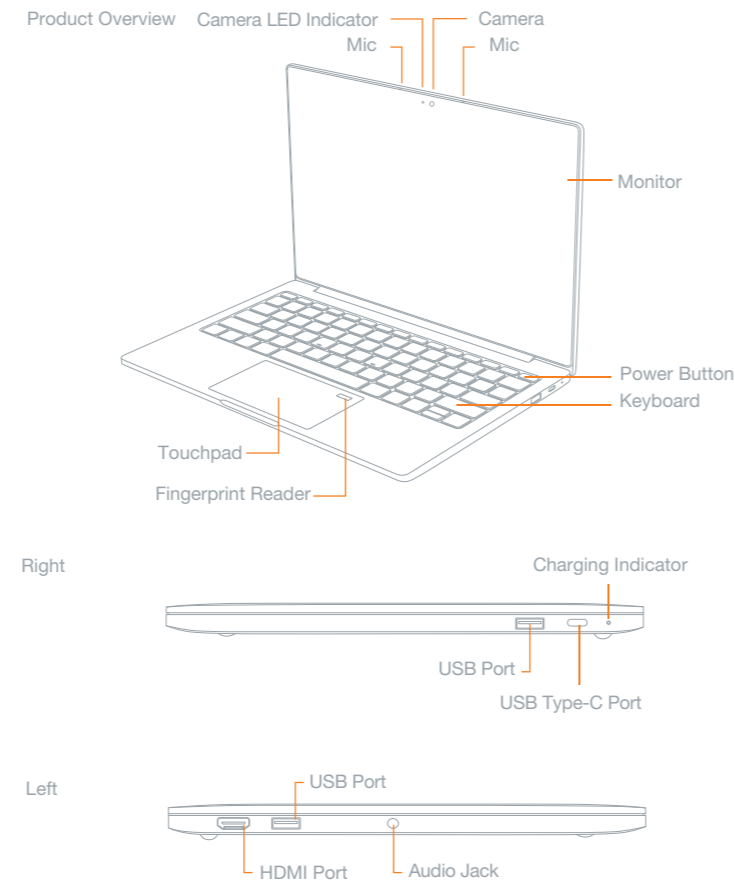


Mi Notebook Air 13.3" User Manual



Thank you for purchasing Mi Notebook Air 13.3". Here are what's in the box:

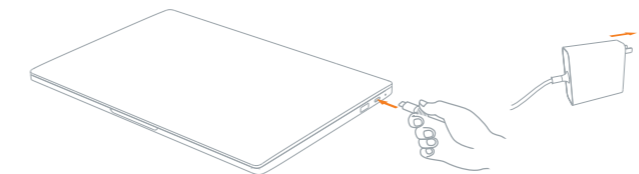
- Mi Notebook Air 13.3"
- AC Adaptor
- User Manual



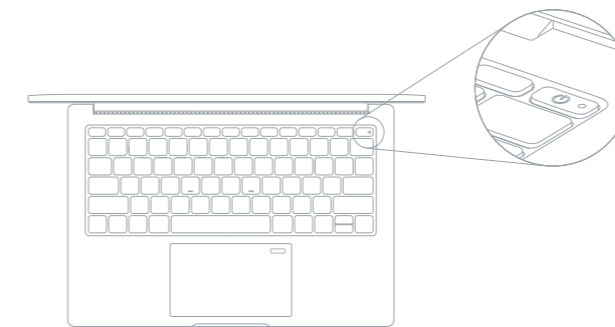
1

Setting up your Mi Notebook Air 13.3"

Step 1: Connect the AC adaptor and plug into power supply.
Connect the AC adaptor to Mi Notebook Air 13.3" and plug it into power supply to activate the battery.



Step 2: Press the power button



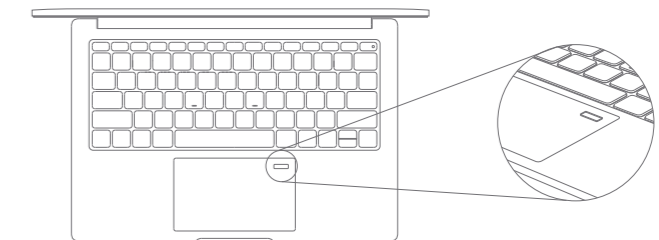
Step 3: Follow instructions on the screen to configure the operating system and pre-installed softwares. Do not cut off power during the process.

2

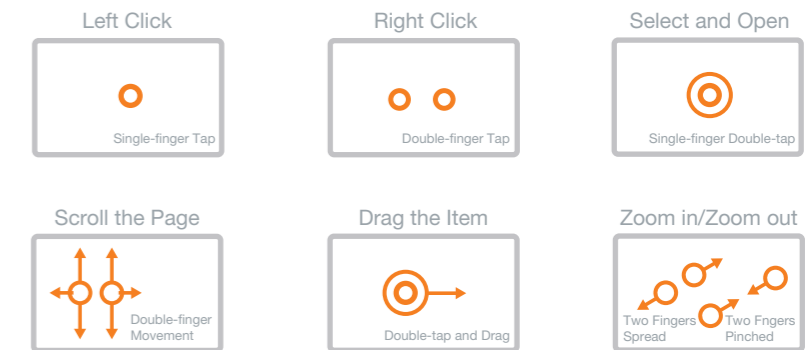
User guide on fingerprint scan

Step 1: Activation of fingerprint unlocking: When setting up your Windows system for the first time, the system will automatically prompt the user about whether to activate the fingerprint unlocking function of Windows Hello and will complete the setting according to the prompt. In case of choosing to skip it over, the user may activate the fingerprint unlocking function through "Adding fingerprint" in the options of settings->account->login.

Step 2: Method of fingerprint operation: Press the finger gently on the fingerprint reader to perform a fingerprint entry or an unlocking operation.



User guide on touch-pad



For more detailed information, please refer to www.mi.com.



3

Federal Communications Commission Declaration of Conformity

This equipment has been tested and found to comply with the limits for a Class B digital device, pursuant to Part 15 of the FCC Rules. These limits are designed to provide reasonable protection against harmful interference in a residential installation. This equipment generates, uses, and can radiate radio frequency energy and, if not installed and used in accordance with the instructions, may cause harmful interference to radio communications. However, there is no guarantee that interference will not occur in a particular installation. If this equipment does cause harmful interference to radio or television reception, which can be determined by turning the equipment off and on, the user is encouraged to try to correct the interference by one or more of the following measures:

- Reorient or relocate the receiving antenna.
- Increase the separation between the equipment and receiver.
- Connect the equipment into an outlet on a circuit different from that to which the receiver is connected.
- Consult an authorized dealer or service representative for help.

FCC Radiation Exposure Statement

This device complies with FCC radiation exposure limits set forth for an uncontrolled environment and it also complies with Part 15 of the FCC RF Rules. This equipment must not be co-located or operating in conjunction with any other antenna or transmitter. End-users and installers must be provide with antenna installation instructions and consider removing the no-collocation statement.

Timi is not responsible for any radio or television interference caused by using other than specified or recommended cables and connectors or by unauthorized changes or modifications to this equipment. Unauthorized changes or modifications could void the user's authority to operate the equipment.

This device complies with Part 15 of the FCC Rules. Operation is subject to the following two conditions: (1) this device may not cause harmful interference, and (2) this device must accept any interference received, including interference that may cause undesired operation.

CP65

WARNING: This product can expose you to chemicals including [name of one or more chemicals], which are known to the State of California to cause cancer. For more information go to www.P65Warnings.ca.gov.

Regarding wireless features

If there are restrictions on the use of computers on an airplane with the wireless feature, please follow relevant laws and regulations.

For example, using wireless devices on an airplane may cause disturbance to other devices and bring security risks.

Regarding rechargeable battery

Replacing or removing the battery may damage the battery and result in overheating and potential security risks. The built-in battery can only be replaced by Xiaomi or its authorized servicers.

The battery must be handled seperatly from household waste. Please dispose the battery according to the user manual and local regulations.

Do not throw or leave the battery in water;
Do not attempt to fix or open the battery.

Do not attempt to dismantle or modify the battery. Such attempts may lead to explosion or internal liquid leakage. Dismantled or modified batteries are not covered under warranty. The rechargeable battery contains a small amount of harmful substances. Misoperation during battery replacement may cause explosion.

Electrical safety

Danger: dangerous current in power and communication cables.

To avoid shock hazards:

- Do not use this product in thunder and lighting conditions.
- Do not connect or disconnect any cables, install or maintain the product.
- Connect the power cord to a properly wired and grounded electrical outlet.
- Disconnect power cord or other cables before open the product, unless otherwise stated.
- Special power cords purchased from the manufacturer or maintenance departments are required when the power cord is damaged.

Important Safeguards

The product complies with EMC Directives when using qualified peripheral devices and shielded cables between system components. To reduce disturbance to radio, television, and other electronic devices, the product must employ qualified peripheral devices and shielded cables between system components.

Operating temperature: 5°C-35°C

Non-operating temperature: -15°C-45°C

Operating humidity range: 5%-90% when non-condensing

WARRANTY PERIOD

Product		Warranty Period
Mi Notebook	Host and Accessories	1 Year

LIMITED WARRANTY COVERAGE

This limited warranty begins on the original date of purchase and continues through the Limited Warranty Period and is valid only for Xiaomi products purchased from www.mi.com/en or a Xiaomi Authorized Reseller and used in United States.

If the product is found to be defective as a result of manufacturing defects in materials and workmanship during the Limited Warranty Period, Xiaomi will, at its sole option, repair or replace the product, at no charge as stipulated herein, with new or reconditioned parts or a functionally equivalent product.

LIMITATIONS AND EXCLUSIONS

Xiaomi does not warrant uninterrupted or error-free operation of the product. Product performance is affected by system configuration, software, applications, your data and operator control of the system, among other factors. Though the product is considered to be compatible with many systems, it is your responsibility to determine compatibility and integration with other products or systems.

This Limited Warranty applies only to the product manufactured by or for Xiaomi, that can be identified by the "Xiaomi" or "Mi" trademark, trade name, or logo affixed to it.

The Limited Warranty does not apply to any:

1. Delivery or Installation, or labor charges for installation or setup of the product.
2. Damage which occurs in shipment, delivery;
3. Cosmetic damage, such as to the exterior finish;
4. The Serial Number of the product, components or accessories has been altered, cancelled or removed;
5. Damage caused by improper installation, improper connection or malfunction of peripheral devices;
6. Damage caused by war, fire, nature disaster, accident, abuse, misuse, neglect, and use under abnormal conditions;
7. Damage caused by operating the Product outside the permitted or intended uses described by Xiaomi or with improper voltage or power supply;
8. Damage caused by third party software, application or viruses;
9. Damage caused by service (including upgrades and expansions) performed by anyone who is not a representative of Xiaomi.
10. Recovery and reinstallation of software programs and user data.

WITHOUT LIMITING THE FOREGOING, YOU ASSUME ALL RISK AND LIABILITY FOR LOSS, DAMAGE OR INJURY TO YOU AND YOUR PROPERTY AND TO OTHERS AND THEIR PROPERTY ARISING OUT OF THE USE, MISUSE OR INABILITY TO USE THE PRODUCT NOT CAUSED DIRECTLY BY THE NEGLIGENCE OF XIAOMI. THIS LIMITED WARRANTY SHALL NOT EXTEND TO ANYONE OTHER THAN THE ORIGINAL PURCHASER OF THIS PRODUCT, IS NONTRANSFERABLE AND STATES YOUR EXCLUSIVE REMEDY.

No Xiaomi reseller, agent, or employee is authorized to make any modification, extension, or addition to this Limited Warranty. If any term is held to be illegal or unenforceable, the legality or enforceability of the remaining terms shall not be affected or impaired.

OBTAINING WARRANTY SERVICE

A Warranty Service Order must be requested from Xiaomi within Warranty Period from the date of receipt of shipment. To request a Warranty Service Order, you must contact Xiaomi Service Team through email: service.us@xiaomi.com, or live chat service at <http://global.mi.com/en/cs/chat> (Monday - Sunday: 08:00 AM - 06:00 PM CST)

To obtain warranty service, you must deliver the product, in either its original packaging or packaging providing an equal degree of protection, to the address specified by Xiaomi. In accordance with applicable law, Xiaomi may require the customer to furnish proof of purchase details before receiving warranty service.

You are responsible for backing-up all system and applications software and data and disabling any security passwords before services are performed, removing any data before parts or products are returned, and for reinstalling all software, data and passwords.

XIAOMI SHALL NOT BE LIABLE FOR THE LOSS OR DESTRUCTION OF DATA OR MEDIA RESULTING FROM THE USE OR SERVICE OF THIS PRODUCT, WHETHER DUE TO VIRUS ISSUES OR OTHERWISE, OR ANY FAILURE TO SECURE ALL PROGRAMS AND DATA CONTAINED IN OR AFFECTED BY THE PRODUCT OR TO MAINTAIN THE CONFIDENTIALITY OF DATA STORED ON THE PRODUCT.

CUSTOMER SUPPORT

For customer support, please email us at: service.us@xiaomi.com or access our live chat service at <http://global.mi.com/en/cs/chat> (Monday - Sunday: 08:00 AM - 06:00 PM CST)

Client: Beijing Xiaomi Communications Co., Ltd.
Manufacturer: Beijing TIMi Technologies Co., Ltd. (eco-chain enterprise of Xiaomi)
Address: No.03, F11, phase-2 office building, BER SHOP, No.68 Middle Qinghe Street, Haidian District, Beijing

Note: Please fill in the above information. The certificate of "three guarantees" is valid only when the serial number at the bottom of the machine, the serial number on the certificate of "three guarantees" and the serial number on the purchase invoice are consistent. To receive the service of repair, replacement or compensation for faulty products, you must provide both the certificate of "three guarantees" and the purchase invoice.

June 2016 (Version 1.0)