

System Check_B2450

DUT: Dipole 2450 MHz D2450V2;

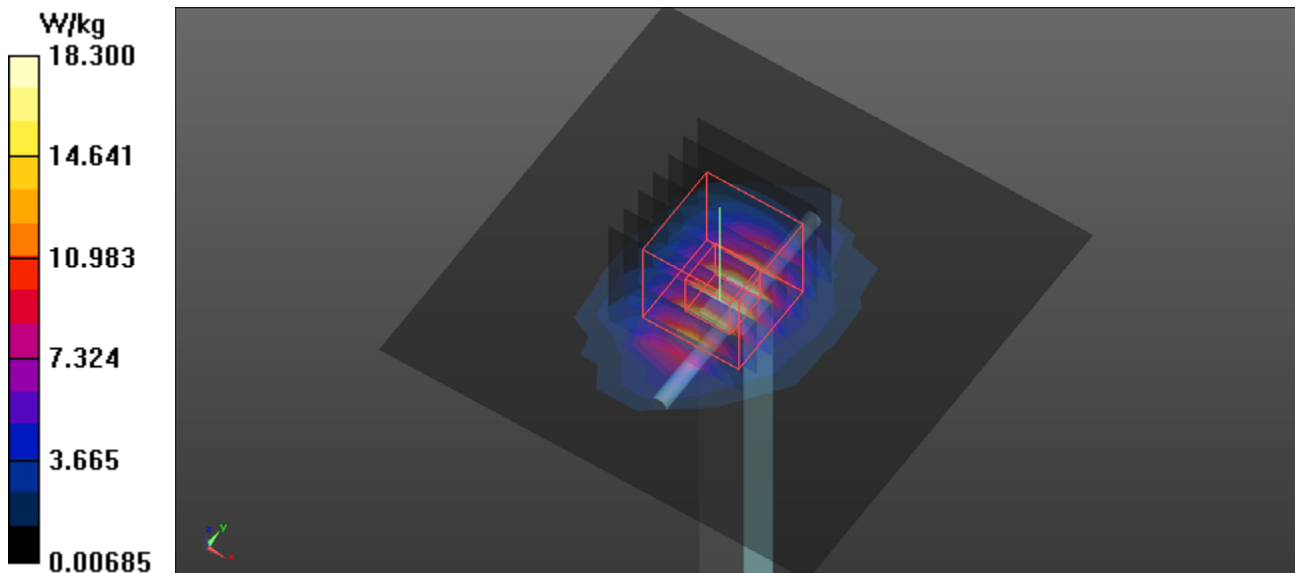
Communication System: UID 0, CW (0); Frequency: 2450 MHz; Duty Cycle: 1:1
Medium parameters used: $f = 2450$ MHz; $\sigma = 1.973$ S/m; $\epsilon_r = 53.183$; $\rho = 1000$ kg/m³
Ambient Temperature : 22.4 °C; Liquid Temperature : 22.2 °C

DASY Configuration:

- Probe: EX3DV4 - SN7369; ConvF(7.56, 7.56, 7.56); Calibrated: 8/31/2016;
- Sensor-Surface: 2mm (Mechanical Surface Detection), $z = 1.0, 31.0$
- Electronics: DAE4 Sn1486; Calibrated: 8/23/2016
- Phantom: ELI V5.0 (20deg probe tilt); Type: QD OVA 002 AA; Serial: 1240
- DASY52 52.8.8(1258); SEMCAD X 14.6.10(7373)

Area Scan (9x9x1): Measurement grid: $dx=12$ mm, $dy=12$ mm
Maximum value of SAR (measured) = 18.3 W/kg

Zoom Scan (7x7x7)/Cube 0: Measurement grid: $dx=5$ mm, $dy=5$ mm, $dz=5$ mm
Reference Value = 96.98 V/m; Power Drift = 0.02 dB
Peak SAR (extrapolated) = 25.4 W/kg
SAR(1 g) = 12.2 W/kg; SAR(10 g) = 5.63 W/kg
Maximum value of SAR (measured) = 18.7 W/kg



System Check_B5200

DUT: Dipole D5GHzV2;

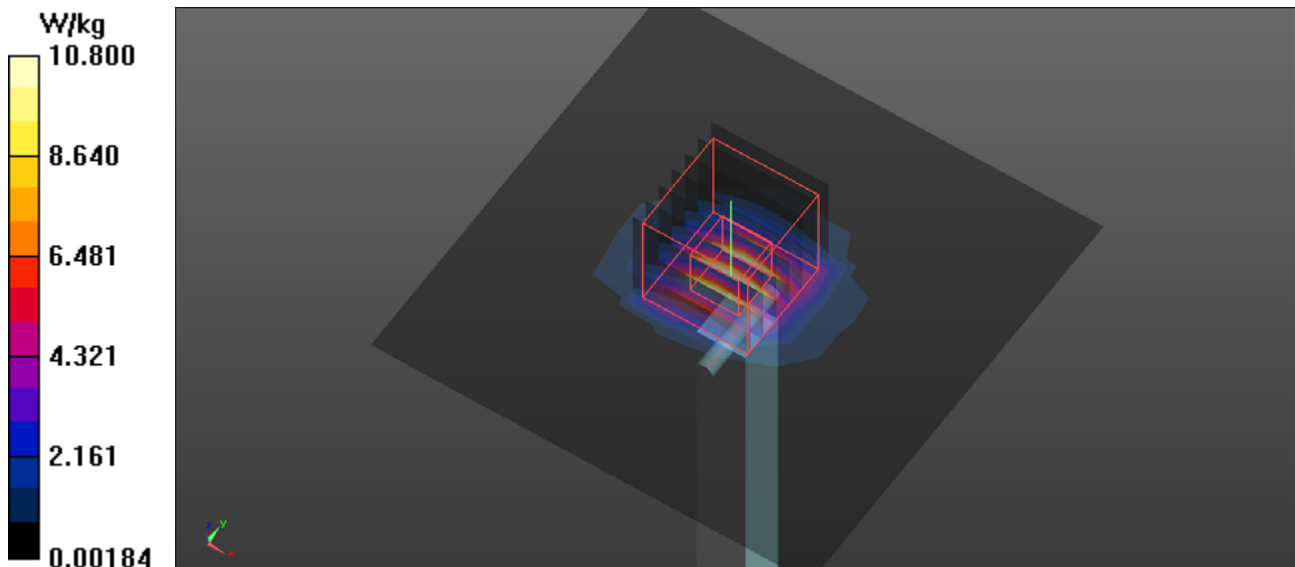
Communication System: UID 0, CW (0); Frequency: 5200 MHz; Duty Cycle: 1:1
Medium parameters used: $f = 5200$ MHz; $\sigma = 5.34$ S/m; $\epsilon_r = 47.596$; $\rho = 1000$ kg/m³
Ambient Temperature : 22.5 °C; Liquid Temperature : 22.2 °C

DASY Configuration:

- Probe: EX3DV4 - SN7369; ConvF(4.68, 4.68, 4.68); Calibrated: 8/31/2016;
- Sensor-Surface: 2mm (Mechanical Surface Detection), $z = 1.0, 23.0$
- Electronics: DAE4 Sn1486; Calibrated: 8/23/2016
- Phantom: ELI V5.0 (20deg probe tilt); Type: QD OVA 002 AA; Serial: 1240
- DASY52 52.8.8(1258); SEMCAD X 14.6.10(7373)

Area Scan (10x10x1): Measurement grid: $dx=10$ mm, $dy=10$ mm
Maximum value of SAR (measured) = 10.8 W/kg

Zoom Scan (7x7x12)/Cube 0: Measurement grid: $dx=4$ mm, $dy=4$ mm, $dz=2$ mm
Reference Value = 56.39 V/m; Power Drift = 0.01 dB
Peak SAR (extrapolated) = 27.0 W/kg
SAR(1 g) = 7.17 W/kg; SAR(10 g) = 2.04 W/kg
Maximum value of SAR (measured) = 14.8 W/kg



System Check_B5300

DUT: Dipole D5GHzV2;

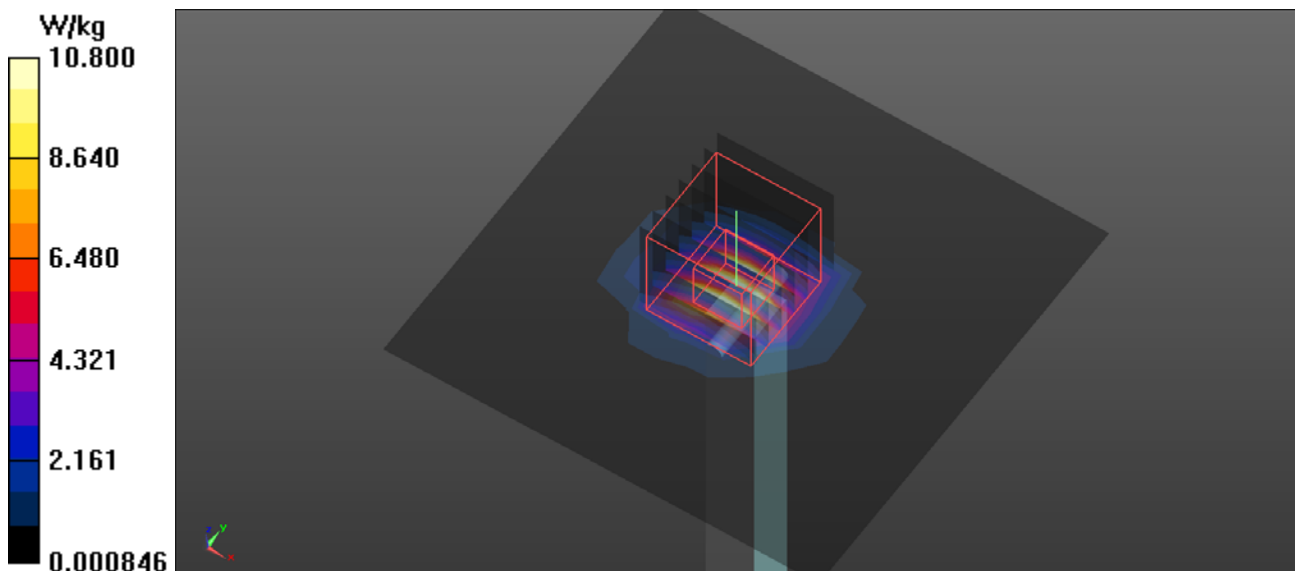
Communication System: UID 0, CW (0); Frequency: 5300 MHz; Duty Cycle: 1:1
Medium parameters used: $f = 5300$ MHz; $\sigma = 5.488$ S/m; $\epsilon_r = 47.447$; $\rho = 1000$ kg/m³
Ambient Temperature : 22.5 °C; Liquid Temperature : 22.3 °C

DASY Configuration:

- Probe: EX3DV4 - SN7369; ConvF(4.51, 4.51, 4.51); Calibrated: 8/31/2016;
- Sensor-Surface: 2mm (Mechanical Surface Detection), $z = 1.0, 23.0$
- Electronics: DAE4 Sn1486; Calibrated: 8/23/2016
- Phantom: ELI V5.0 (20deg probe tilt); Type: QD OVA 002 AA; Serial: 1240
- DASY52 52.8.8(1258); SEMCAD X 14.6.10(7373)

Area Scan (10x10x1): Measurement grid: $dx=10$ mm, $dy=10$ mm
Maximum value of SAR (measured) = 10.8 W/kg

Zoom Scan (7x7x12)/Cube 0: Measurement grid: $dx=4$ mm, $dy=4$ mm, $dz=2$ mm
Reference Value = 56.85 V/m; Power Drift = 0.08 dB
Peak SAR (extrapolated) = 29.4 W/kg
SAR(1 g) = 7.33 W/kg; SAR(10 g) = 2.06 W/kg
Maximum value of SAR (measured) = 15.3 W/kg



System Check_B5300_170728

DUT: Dipole D5GHzV2;

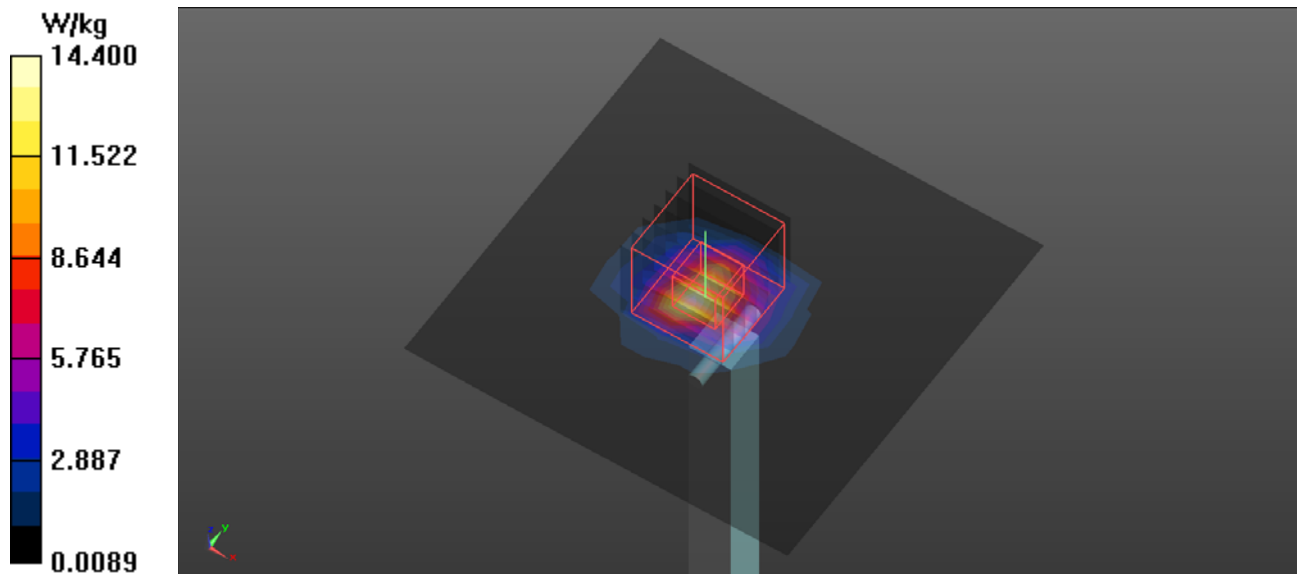
Communication System: UID 0, CW (0); Frequency: 5300 MHz; Duty Cycle: 1:1
Medium parameters used: $f = 5300$ MHz; $\sigma = 5.468$ S/m; $\epsilon_r = 47.734$; $\rho = 1000$ kg/m³
Ambient Temperature : 22.2 °C; Liquid Temperature : 21.8 °C

DASY Configuration:

- Probe: EX3DV4 - SN7369; ConvF(4.51, 4.51, 4.51); Calibrated: 8/31/2016;
- Sensor-Surface: 2mm (Mechanical Surface Detection), $z = 1.0, 23.0$
- Electronics: DAE4 Sn1486; Calibrated: 8/23/2016
- Phantom: ELI V5.0 (20deg probe tilt); Type: QD OVA 002 AA; Serial: 1240
- DASY52 52.8.8(1258); SEMCAD X 14.6.10(7373)

Area Scan (10x10x1): Measurement grid: $dx=10$ mm, $dy=10$ mm
Maximum value of SAR (measured) = 14.4 W/kg

Zoom Scan (7x7x12)/Cube 0: Measurement grid: $dx=4$ mm, $dy=4$ mm, $dz=2$ mm
Reference Value = 58.08 V/m; Power Drift = -0.03 dB
Peak SAR (extrapolated) = 34.6 W/kg
SAR(1 g) = 8.18 W/kg; SAR(10 g) = 2.38 W/kg
Maximum value of SAR (measured) = 17.8 W/kg



System Check_B5600

DUT: Dipole D5GHzV2;

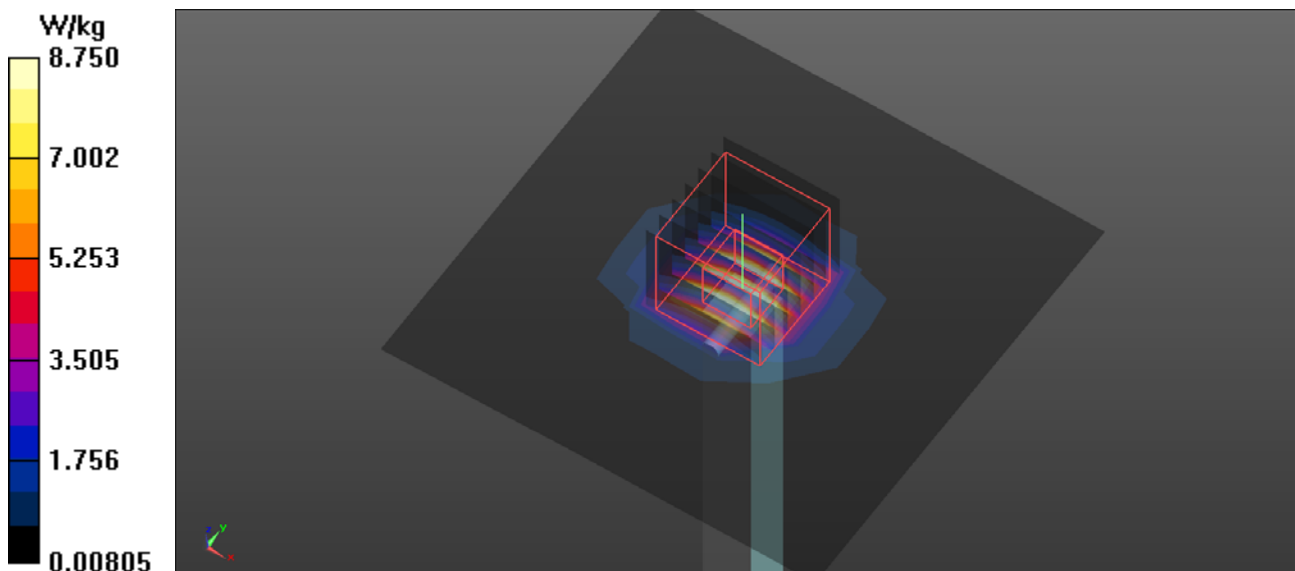
Communication System: UID 0, CW (0); Frequency: 5600 MHz; Duty Cycle: 1:1
Medium parameters used: $f = 5600$ MHz; $\sigma = 5.885$ S/m; $\epsilon_r = 46.751$; $\rho = 1000$ kg/m³
Ambient Temperature : 22.4 °C; Liquid Temperature : 22.3 °C

DASY Configuration:

- Probe: EX3DV4 - SN7369; ConvF(3.79, 3.79, 3.79); Calibrated: 8/31/2016;
- Sensor-Surface: 2mm (Mechanical Surface Detection), $z = 1.0, 23.0$
- Electronics: DAE4 Sn1486; Calibrated: 8/23/2016
- Phantom: ELI V5.0 (20deg probe tilt); Type: QD OVA 002 AA; Serial: 1240
- DASY52 52.8.8(1258); SEMCAD X 14.6.10(7373)

Area Scan (10x10x1): Measurement grid: $dx=10$ mm, $dy=10$ mm
Maximum value of SAR (measured) = 8.75 W/kg

Zoom Scan (7x7x12)/Cube 0: Measurement grid: $dx=4$ mm, $dy=4$ mm, $dz=2$ mm
Reference Value = 56.11 V/m; Power Drift = 0.09 dB
Peak SAR (extrapolated) = 34.0 W/kg
SAR(1 g) = 7.51 W/kg; SAR(10 g) = 2.07 W/kg
Maximum value of SAR (measured) = 16.2 W/kg



System Check_B5600_170728

DUT: Dipole D5GHzV2;

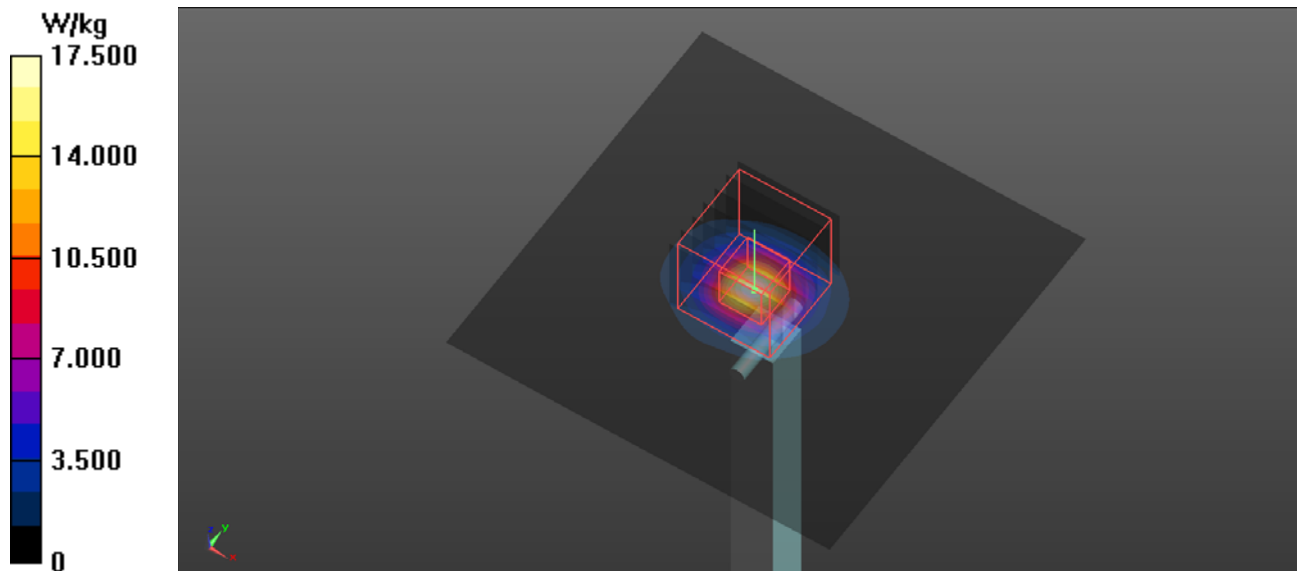
Communication System: UID 0, CW (0); Frequency: 5600 MHz; Duty Cycle: 1:1
Medium parameters used: $f = 5600$ MHz; $\sigma = 5.92$ S/m; $\epsilon_r = 46.9$; $\rho = 1000$ kg/m³
Ambient Temperature : 22.2 °C; Liquid Temperature : 21.8 °C

DASY Configuration:

- Probe: EX3DV4 - SN7369; ConvF(3.79, 3.79, 3.79); Calibrated: 8/31/2016;
- Sensor-Surface: 2mm (Mechanical Surface Detection), $z = 1.0, 21.0$
- Electronics: DAE4 Sn1486; Calibrated: 8/23/2016
- Phantom: ELI V5.0 (20deg probe tilt); Type: QD OVA 002 AA; Serial: 1240
- DASY52 52.8.8(1258); SEMCAD X 14.6.10(7373)

Area Scan (91x91x1): Interpolated grid: $dx=1.000$ mm, $dy=1.000$ mm
Maximum value of SAR (interpolated) = 17.5 W/kg

Zoom Scan (7x7x11)/Cube 0: Measurement grid: $dx=4$ mm, $dy=4$ mm, $dz=2$ mm
Reference Value = 60.14 V/m; Power Drift = -0.04 dB
Peak SAR (extrapolated) = 34.3 W/kg
SAR(1 g) = 8.69 W/kg; SAR(10 g) = 2.43 W/kg
Maximum value of SAR (measured) = 18.6 W/kg



System Check_B5800

DUT: Dipole D5GHzV2;

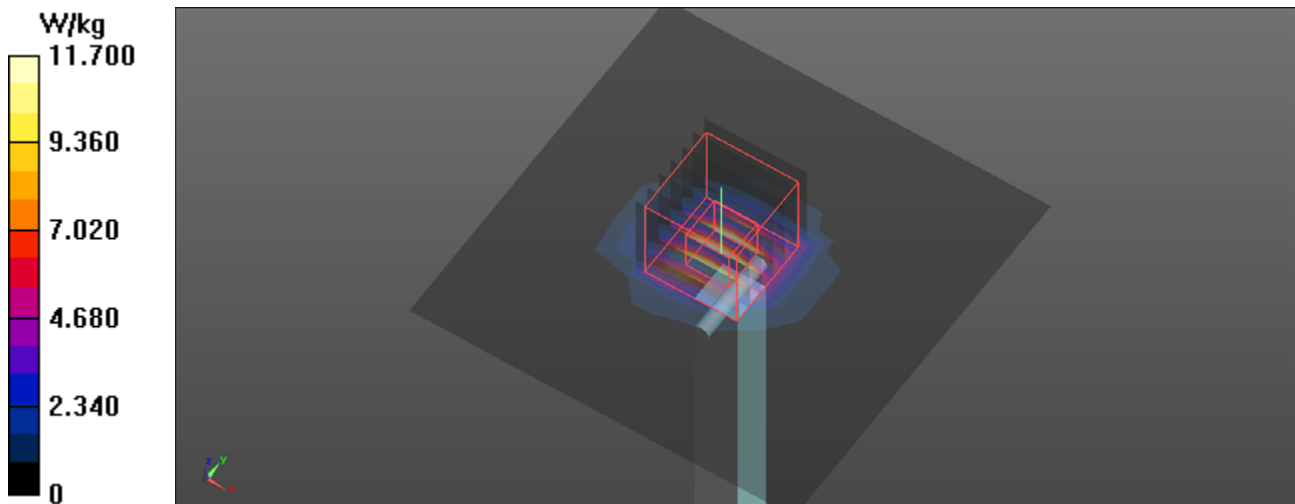
Communication System: UID 0, CW (0); Frequency: 5800 MHz; Duty Cycle: 1:1
Medium parameters used: $f = 5800$ MHz; $\sigma = 6.163$ S/m; $\epsilon_r = 46.419$; $\rho = 1000$ kg/m³
Ambient Temperature : 22.4 °C; Liquid Temperature : 22.3 °C

DASY Configuration:

- Probe: EX3DV4 - SN7369; ConvF(4, 4, 4); Calibrated: 8/31/2016;
- Sensor-Surface: 2mm (Mechanical Surface Detection), $z = 1.0, 23.0$
- Electronics: DAE4 Sn1486; Calibrated: 8/23/2016
- Phantom: ELI V5.0 (20deg probe tilt); Type: QD OVA 002 AA; Serial: 1240
- DASY52 52.8.8(1258); SEMCAD X 14.6.10(7373)

Area Scan (10x10x1): Measurement grid: $dx=10$ mm, $dy=10$ mm
Maximum value of SAR (measured) = 11.7 W/kg

Zoom Scan (7x7x12)/Cube 0: Measurement grid: $dx=4$ mm, $dy=4$ mm, $dz=2$ mm
Reference Value = 56.99 V/m; Power Drift = 0.10 dB
Peak SAR (extrapolated) = 32.6 W/kg
SAR(1 g) = 7.92 W/kg; SAR(10 g) = 2.25 W/kg
Maximum value of SAR (measured) = 17.1 W/kg



System Check_B5800_170728

DUT: Dipole D5GHzV2;

Communication System: UID 0, CW (0); Frequency: 5800 MHz; Duty Cycle: 1:1
Medium parameters used: $f = 5800$ MHz; $\sigma = 6.209$ S/m; $\epsilon_r = 46.515$; $\rho = 1000$ kg/m³
Ambient Temperature : 22.2 °C; Liquid Temperature : 21.8 °C

DASY Configuration:

- Probe: EX3DV4 - SN7369; ConvF(4, 4, 4); Calibrated: 8/31/2016;
- Sensor-Surface: 2mm (Mechanical Surface Detection), $z = 1.0, 21.0$
- Electronics: DAE4 Sn1486; Calibrated: 8/23/2016
- Phantom: ELI V5.0 (20deg probe tilt); Type: QD OVA 002 AA; Serial: 1240
- DASY52 52.8.8(1258); SEMCAD X 14.6.10(7373)

Area Scan (10x10x1): Measurement grid: $dx=10$ mm, $dy=10$ mm
Maximum value of SAR (measured) = 12.4 W/kg

Zoom Scan (7x7x11)/Cube 0: Measurement grid: $dx=4$ mm, $dy=4$ mm, $dz=2$ mm
Reference Value = 56.61 V/m; Power Drift = -0.04 dB
Peak SAR (extrapolated) = 32.3 W/kg
SAR(1 g) = 7.87 W/kg; SAR(10 g) = 2.21 W/kg
Maximum value of SAR (measured) = 17.0 W/kg

