

FCC TEST REPORT

For

Shenzhen Renqing Excellent Investment Co.,Ltd

W10 Quick Wireless charger

Model No.: RWC0245

Prepared For : Shenzhen Renqing Excellent Investment Co.,Ltd
Address : 3/F,Block A7 Nanshan ipark,No.1001 Xueyuan Road, Nanshan District,
Shenzhen, China

Prepared By : Shenzhen Anbotek Compliance Laboratory Limited
Address : 1/F, Building D, Sogood Science and Technology Park, Sanwei
community, Hangcheng Street, Bao'an District, Shenzhen, Guangdong,
China.518102
Tel: (86) 755-26066365 Fax: (86) 755-26014772

Report Number : SZAWW180118002-01
Date of Test : Jan.20~28, 2018
Date of Report : Feb. 02, 2018

Contents

1. General Information.....	4
1.1. Client Information.....	4
1.2. Description of Device (EUT).....	4
1.3. Auxiliary Equipment Used During Test.....	4
1.4. Description of Test Modes.....	5
1.5. List of channels.....	5
1.6. Description Of Test Setup.....	6
1.7. Test Equipment List.....	7
1.8. Measurement Uncertainty.....	8
1.9. Description of Test Facility.....	8
2. Summary of Test Results.....	9
3. Conducted Emission Test.....	10
3.1. Test Standard and Limit.....	10
3.2. Test Setup.....	10
3.3. Test Procedure.....	10
3.4. Test Data.....	10
4. Radiation Spurious Emission and Band Edge.....	15
4.1. Test Standard and Limit.....	15
4.2. Test Setup.....	15
4.3. Test Procedure.....	16
4.4. Test Data.....	17
APPENDIX I -- TEST SETUP PHOTOGRAPH.....	21
APPENDIX II -- EXTERNAL PHOTOGRAPH.....	23
APPENDIX III -- INTERNAL PHOTOGRAPH.....	27

TEST REPORT

Applicant : Shenzhen Renqing Excellent Investment Co.,Ltd
Manufacturer : Shenzhen Renqing Excellent Investment Co.,Ltd
Product Name : W10 Quick Wireless charger
Model No. : RWC0245
Trade Mark : ROCK, rock space
Rating(s) : Input: DC 5V 2A/DC 9V 1.67A
: Output: DC 5V 1A/ DC 9V 1.1A

Test Standard(s) : FCC Part15 Subpart C 2017, Paragraph 15.209

Test Method(s) : ANSI C63.10: 2013

The device described above is tested by Shenzhen Anbotek Compliance Laboratory Limited to determine the maximum emission levels emanating from the device and the severe levels of the device can endure and its performance criterion. The measurement results are contained in this test report and Shenzhen Anbotek Compliance Laboratory Limited is assumed full of responsibility for the accuracy and completeness of these measurements. Also, this report shows that the EUT (Equipment Under Test) is technically compliant with the FCC Part 15 Subpart C requirements.

This report applies to above tested sample only and shall not be reproduced in part without written approval of Shenzhen Anbotek Compliance Laboratory Limited.

Date of Test : Jan.20~28, 2018

Prepared by :



Winkey Wang

(Tested Engineer / Winkey Wang)

Reviewer :

Tangcy. T.

(Project Manager / Tangcy. T)

Approved & Authorized Signer :

Tom Chen

(Manager / Tom Chen)

1. General Information

1.1. Client Information

Applicant	:	Shenzhen Renqing Excellent Investment Co.,Ltd
Address	:	3/F,Block A7 Nanshan ipark,No.1001 Xueyuan Road, Nanshan District, Shenzhen, China
Manufacturer	:	Shenzhen Renqing Excellent Investment Co.,Ltd
Address	:	3/F,Block A7 Nanshan ipark,No.1001 Xueyuan Road, Nanshan District, Shenzhen, China

1.2. Description of Device (EUT)

Product Name	:	W10 Quick Wireless charger	
Model No.	:	RWC0245	
Trade Mark	:	ROCK, rock space	
Test Power Supply	:	AC 120V, 60Hz for adapter/AC 240V, 60Hz for adapter	
Product Description	:	Operation Frequency:	110-205KHz
		Number of Channel:	20 Channels
		Modulation Type:	MSK
		Antenna Type:	Inductive loop coil Antenna
		Antenna Gain(Peak):	0 dBi
Remark: 1) For a more detailed features description, please refer to the manufacturer's specifications or the User's Manual.			

1.3. Auxiliary Equipment Used During Test

Adapter	:	Manufacturer: ZMI M/N: HA612 S/N: CY0091751009720 Input: AC 100-240V, 50-60Hz, 0.5A Output: DC 5V 2.5A/DC 9V 2A/DC 12V1.5A
Mobile Phone	:	Manufacturer: SAMSUNG M/N: SM-G9550 S/N: R28J636WJ1B CE , FCC, DOC

1.4. Description of Test Modes

To investigate the maximum EMI emission characteristics generated from EUT, the test system was pre-scanning tested based on the consideration of following EUT operation mode or test configuration mode which possibly have effect on EMI emission level. Each of these EUT operation mode(s) or test configuration mode(s) mentioned above was evaluated respectively.

Pretest Mode	Description
Mode 1	CH01
Mode 2	CH10
Mode 3	CH20
Mode 4	Keeping TX+Charging mode

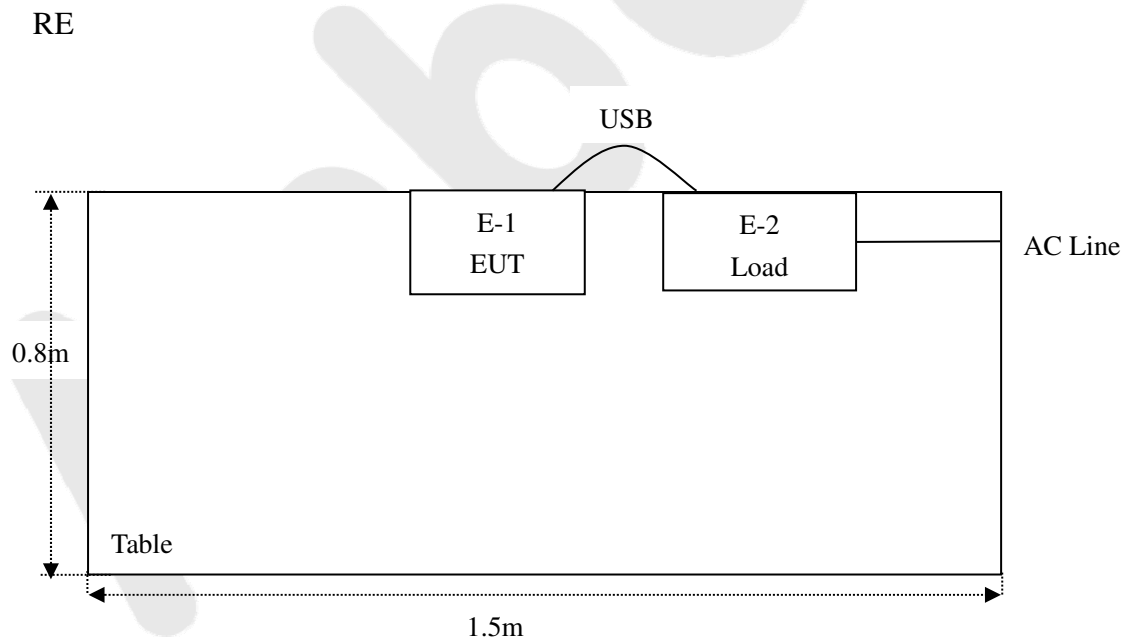
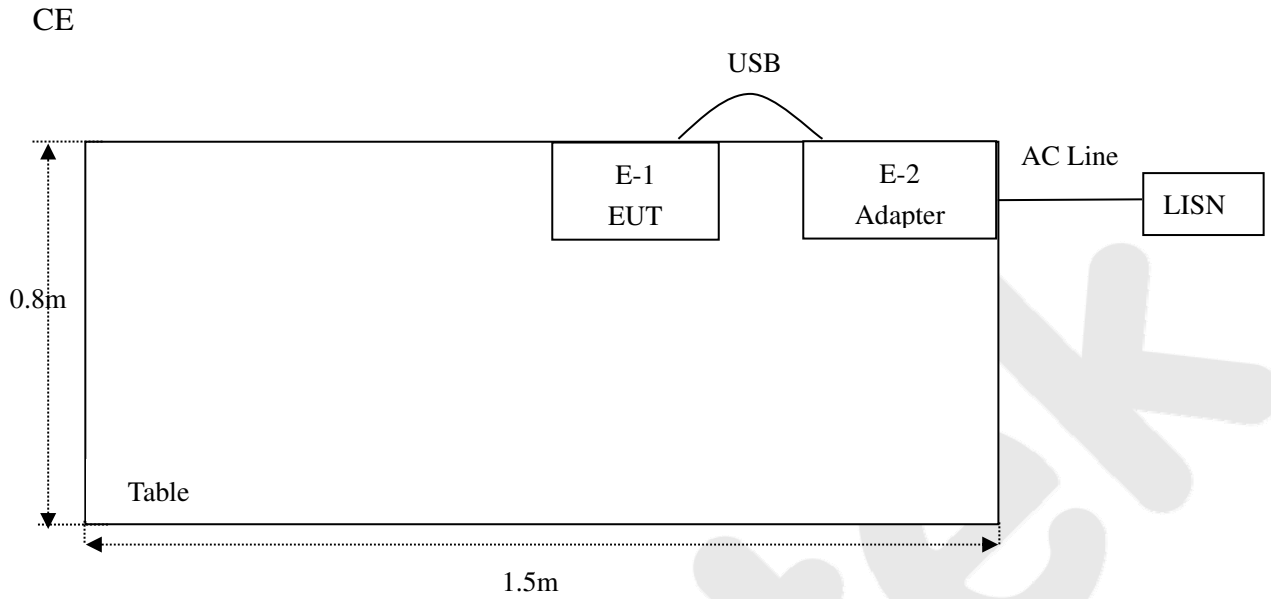
For Conducted Emission	
Final Test Mode	Description
Mode 4	Keeping TX+Charging mode

For Radiated Emission	
Final Test Mode	Description
Mode 1	CH01
Mode 2	CH10
Mode 3	CH20

1.5. List of channels

Channel	Freq. (MHz)	Channel	Freq. (MHz)	Channel	Freq. (MHz)	Channel	Freq. (MHz)
1	0.110	6	0.135	11	0.160	16	0.185
2	0.115	7	0.140	12	0.165	17	0.190
3	0.120	8	0.145	13	0.170	18	0.195
4	0.125	9	0.150	14	0.175	19	0.200
5	0.130	10	0.155	15	0.180	20	0.205

1.6. Description Of Test Setup



1.7. Test Equipment List

Item	Equipment	Manufacturer	Model No.	Serial No.	Last Cal.	Cal. Interval
1.	L.I.S.N. Artificial Mains Network	Rohde & Schwarz	ENV216	100055	Nov. 17, 2017	1 Year
2.	EMI Test Receiver	Rohde & Schwarz	ESCI	100627	Nov. 17, 2017	1 Year
3.	RF Switching Unit	Compliance Direction	RSU-M2	38303	Nov. 17, 2017	1 Year
4.	Spectrum Analysis	Agilent	E4407B	US39390582	Nov. 17, 2017	1 Year
5.	Spectrum Analysis	Agilent	N9038A	MY53227295	Nov. 17, 2017	1 Year
6.	Preamplifier	SKET Electronic	BK1G18G3 0D	KD17503	Nov. 17, 2017	1 Year
7.	EMI Test Receiver	Rohde & Schwarz	ESPI	101604	Nov. 17, 2017	1 Year
8.	Double Ridged Horn Antenna	Instruments corporation	GTH-0118	351600	Nov. 20, 2017	1 Year
9.	Bilog Broadband Antenna	Schwarzbeck	VULB9163	VULB 9163-289	Nov. 20, 2017	1 Year
10.	Loop Antenna	Schwarzbeck	HFH2-Z2	100047	Nov. 17, 2017	1 Year
11.	Horn Antenna	Schwarzbeck	BBHA9170	9170-375	Nov. 17, 2017	1 Year
12.	Pre-amplifier	SONOMA	310N	186860	Nov. 17, 2017	1 Year
13.	EMI Test Software EZ-EMC	SHURPLE	N/A	N/A	N/A	N/A
14.	RF Test Control System	YIHENG	YH3000	2017430	Nov. 18, 2017	1 Year
15.	Power Sensor	DAER	RPR3006W	15I00041SN045	Nov. 17, 2017	1 Year
16.	Power Sensor	DAER	RPR3006W	15I00041SN046	Nov. 17, 2017	1 Year
17.	MXA Spectrum Analysis	Agilent	N9020A	MY51170037	Nov. 18, 2017	1 Year
18.	MXG RF Vector Signal Generator	Agilent	N5182A	MY48180656	Nov. 18, 2017	1 Year
19.	Signal Generator	Agilent	E4421B	MY41000743	Nov. 18, 2017	1 Year
20.	DC Power Supply	LW	TPR-6410D	349315	Nov. 01, 2017	1 Year
21.	Constant Temperature Humidity Chamber	Sertep	ZJ-HWHS8 0B	ZJ-17042804	Nov. 01, 2017	1 Year

1.8. Measurement Uncertainty

Radiation Uncertainty	:	Ur = 4.1 dB (Horizontal)
		Ur = 4.3 dB (Vertical)
Conduction Uncertainty	:	Uc = 3.4dB

1.9. Description of Test Facility

The test facility is recognized, certified, or accredited by the following organizations:

FCC-Registration No.: 184111

Shenzhen Anbotek Compliance Laboratory Limited, EMC Laboratory has been registered and fully described in a report filed with the (FCC) Federal Communications Commission. The acceptance letter from the FCC is maintained in our files. Registration No. 184111, July 31, 2017.

ISED-Registration No.: 8058A-1

Shenzhen Anbotek Compliance Laboratory Limited, EMC Laboratory has been registered and fully described in a report filed with the (ISED) Innovation, Science and Economic Development Canada. The acceptance letter from the ISED is maintained in our files. Registration 8058A-1, June 13, 2016.

Test Location

All Emissions tests were performed at
1/F, Building D, Sogood Science and Technology Park, Sanwei community, Hangcheng Street, Bao'an District,
Shenzhen, Guangdong, China.518102

2. Summary of Test Results

Standard Section	Test Item	Result
FCC Part 15, Paragraph 15.207	Conducted Emission Test	PASS
FCC Part 15, Paragraph 15.209(a)(f)	Spurious Emission	PASS

Anbotek

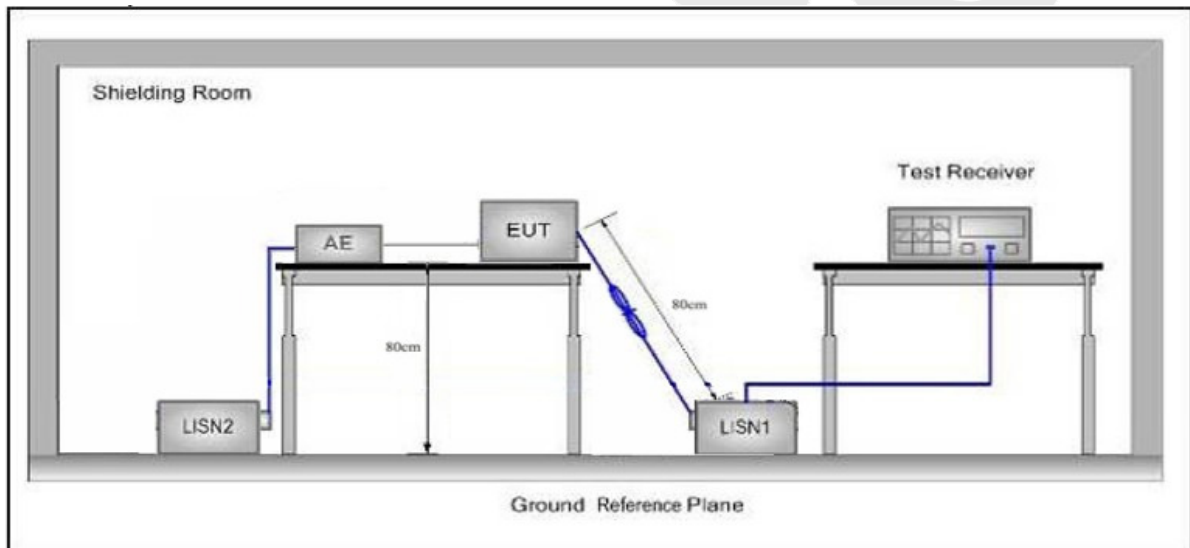
3. Conducted Emission Test

3.1. Test Standard and Limit

Test Standard	FCC Part15 Section 15.207		
Test Limit	Frequency	Maximum RF Line Voltage (dBuV)	
		Quasi-peak Level	Average Level
	150kHz~500kHz	66 ~ 56 *	56 ~ 46 *
	500kHz~5MHz	56	46
5MHz~30MHz	60	50	

Remark: (1) *Decreasing linearly with logarithm of the frequency.
(2) The lower limit shall apply at the transition frequency.

3.2. Test Setup



3.3. Test Procedure

The EUT system is connected to the power mains through a line impedance stabilization network (L.I.S.N.). This provides a 50ohm coupling impedance for the EUT system. Please refer the block diagram of the test setup and photographs. Both sides of AC line are checked to find out the maximum conducted emission. In order to find the maximum emission levels, the relative positions of equipment and all of the interface cables shall be changed according to FCC ANSI C63.10-2013 on Conducted Emission Measurement.

The bandwidth of test receiver (ESCI) set at 9kHz.

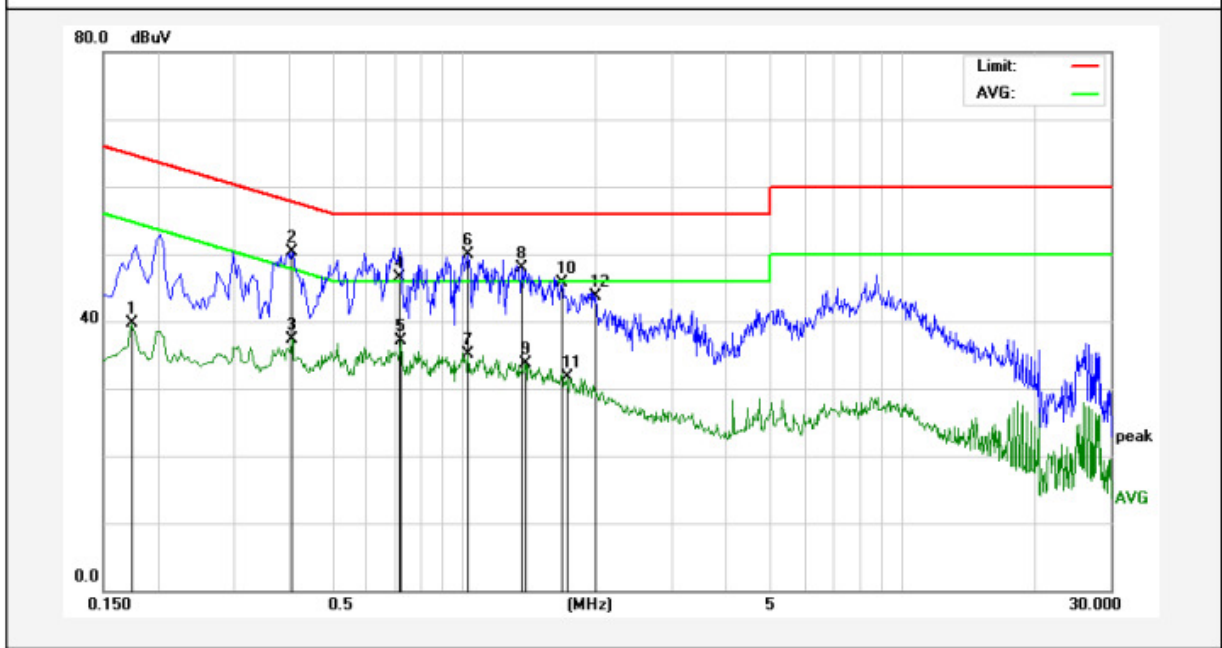
The frequency range from 150kHz to 30MHz is checked.

3.4. Test Data

Please to see the following pages

Conducted Emission Test Data

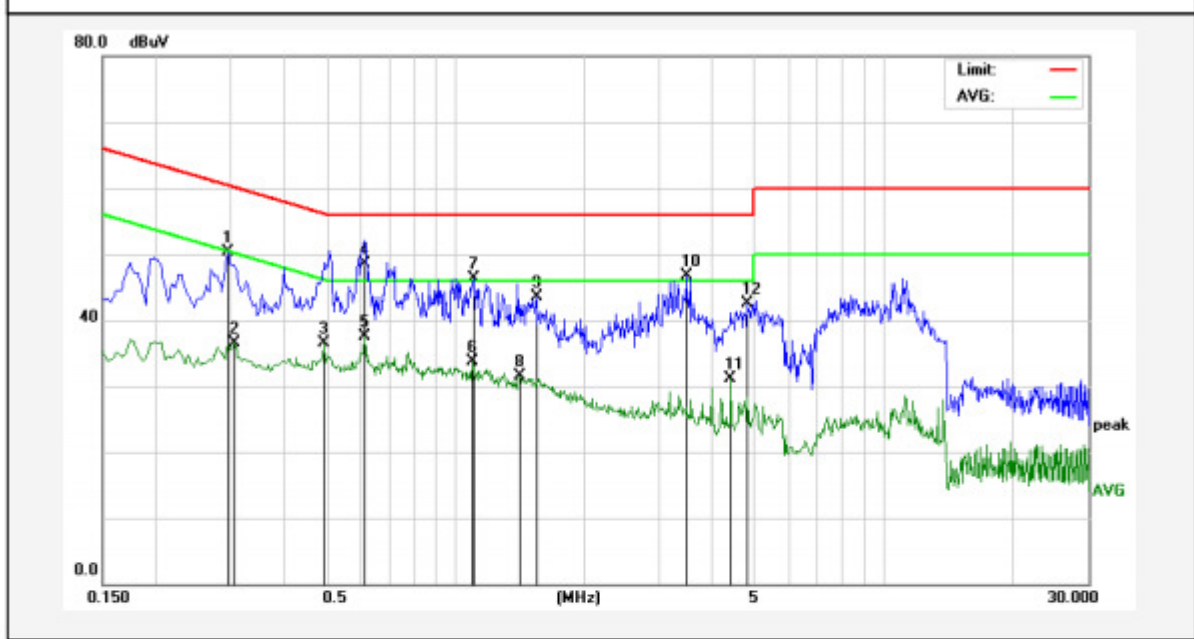
Test Site: 1# Shielded Room
 Operating Condition: Keeping TX+Charging mode
 Test Specification: AC 120V, 60Hz for adapter
 Comment: Live Line
 Tem.:25°C Hum.:50%



No.	Freq. (MHz)	Reading (dBuV)	Factor (dB)	Result (dBuV)	Limit dBuV	Over Limit (dB)	Detector	Remark
1	0.1740	21.74	17.90	39.64	54.76	-15.12	AVG	
2	0.4060	32.34	17.94	50.28	57.73	-7.45	QP	
3	0.4060	19.37	17.94	37.31	47.73	-10.42	AVG	
4	0.7140	28.54	18.04	46.58	56.00	-9.42	QP	
5	0.7180	18.99	18.04	37.03	46.00	-8.97	AVG	
6	1.0260	31.80	18.12	49.92	56.00	-6.08	QP	
7	1.0260	17.05	18.12	35.17	46.00	-10.83	AVG	
8	1.3580	29.76	18.13	47.89	56.00	-8.11	QP	
9	1.3860	15.66	18.13	33.79	46.00	-12.21	AVG	
10	1.6780	27.54	18.13	45.67	56.00	-10.33	QP	
11	1.7180	13.51	18.13	31.64	46.00	-14.36	AVG	
12	2.0020	25.61	18.14	43.75	56.00	-12.25	QP	

Conducted Emission Test Data

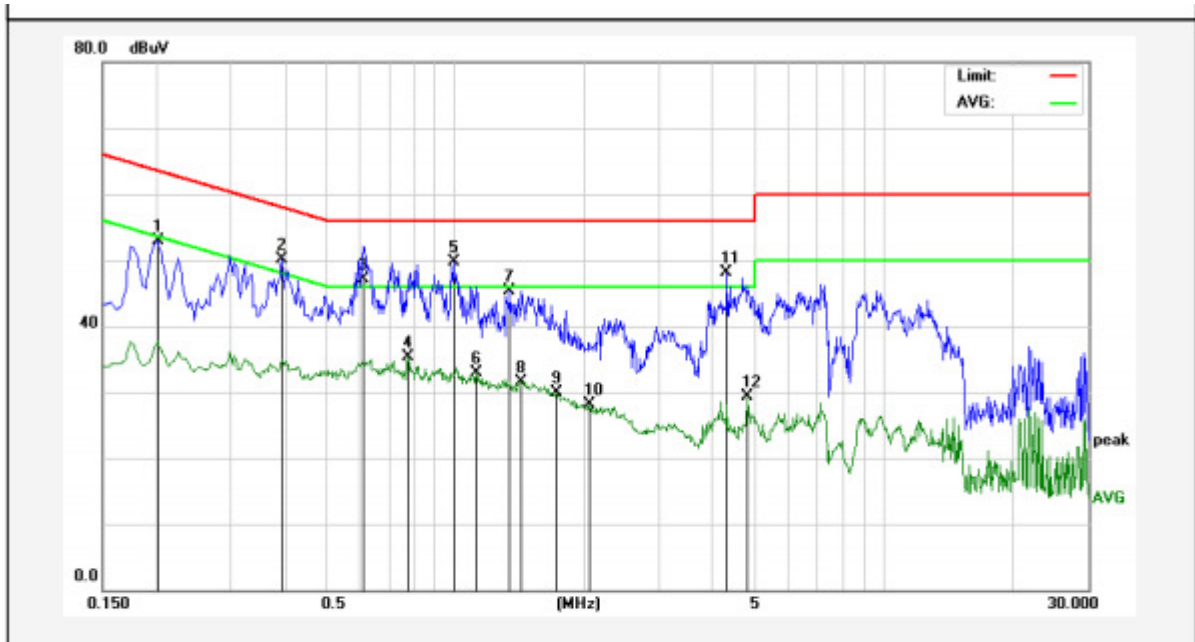
Test Site: 1# Shielded Room
 Operating Condition: Keeping TX+Charging mode
 Test Specification: AC 120V, 60Hz for adapter
 Comment: Neutral Line
 Tem.:25°C Hum.:50%



No.	Freq. (MHz)	Reading (dBuV)	Factor (dB)	Result (dBuV)	Limit dBuV	Over Limit (dB)	Detector	Remark
1	0.2940	32.34	17.89	50.23	60.41	-10.18	QP	
2	0.3060	18.69	17.89	36.58	50.08	-13.50	AVG	
3	0.4940	18.59	17.98	36.57	46.10	-9.53	AVG	
4	0.6140	30.43	18.01	48.44	56.00	-7.56	QP	
5	0.6140	19.55	18.01	37.56	46.00	-8.44	AVG	
6	1.0980	15.61	18.12	33.73	46.00	-12.27	AVG	
7	1.1019	28.23	18.12	46.35	56.00	-9.65	QP	
8	1.4180	13.36	18.13	31.49	46.00	-14.51	AVG	
9	1.5460	25.35	18.13	43.48	56.00	-12.52	QP	
10	3.4620	28.63	18.17	46.80	56.00	-9.20	QP	
11	4.3900	12.86	18.19	31.05	46.00	-14.95	AVG	
12	4.8100	24.35	18.20	42.55	56.00	-13.45	QP	

Conducted Emission Test Data

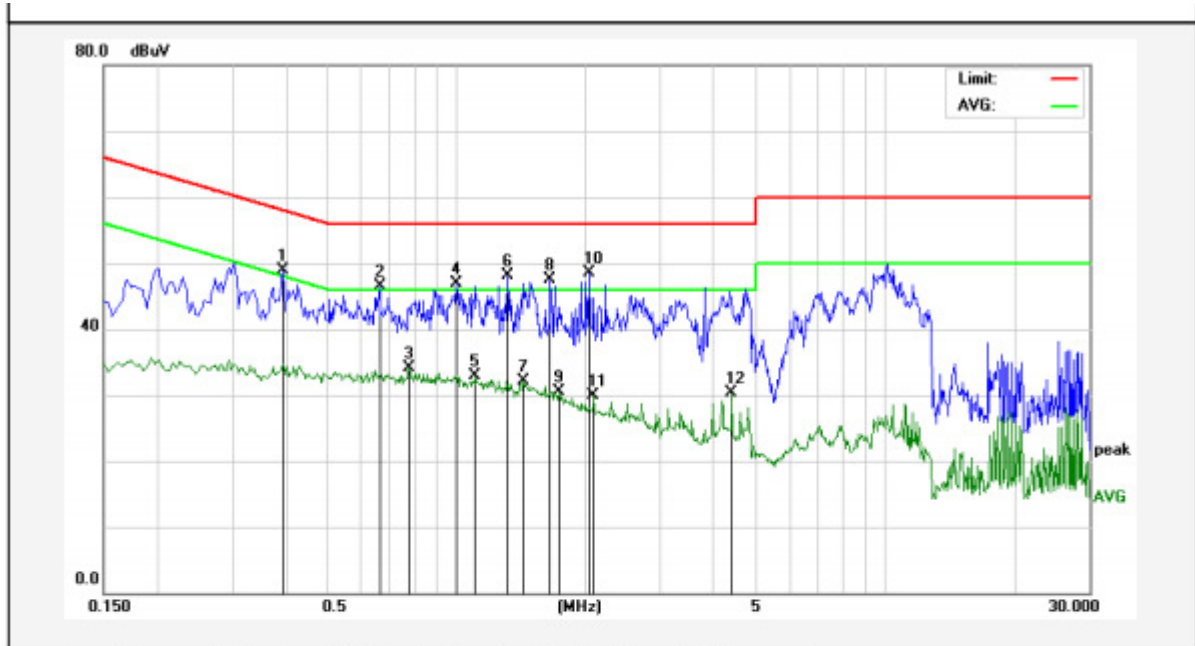
Test Site: 1# Shielded Room
 Operating Condition: Keeping TX+Charging mode
 Test Specification: AC 240V, 60Hz for adapter
 Comment: Live Line
 Tem.:25°C Hum.:50%



No.	Freq. (MHz)	Reading (dBuV)	Factor (dB)	Result (dBuV)	Limit dBuV	Over Limit (dB)	Detector	Remark
1	0.2020	34.94	17.90	52.84	63.52	-10.68	QP	
2	0.3940	32.22	17.93	50.15	57.98	-7.83	QP	
3	0.6100	29.09	18.01	47.10	56.00	-8.90	QP	
4	0.7780	17.19	18.06	35.25	46.00	-10.75	AVG	
5	0.9900	31.51	18.12	49.63	56.00	-6.37	QP	
6	1.1180	14.83	18.12	32.95	46.00	-13.05	AVG	
7	1.3380	27.13	18.13	45.26	56.00	-10.74	QP	
8	1.4260	13.34	18.13	31.47	46.00	-14.53	AVG	
9	1.7300	11.70	18.13	29.83	46.00	-16.17	AVG	
10	2.0620	9.91	18.14	28.05	46.00	-17.95	AVG	
11	4.3100	29.83	18.19	48.02	56.00	-7.98	QP	
12	4.8100	11.06	18.20	29.26	46.00	-16.74	AVG	

Conducted Emission Test Data

Test Site: 1# Shielded Room
 Operating Condition: Keeping TX+Charging mode
 Test Specification: AC 240V, 60Hz for adapter
 Comment: Neutral Line
 Tem.:25°C Hum.:50%



No.	Freq. (MHz)	Reading (dBuV)	Factor (dB)	Result (dBuV)	Limit dBuV	Over Limit (dB)	Detector	Remark
1	0.3940	30.92	17.93	48.85	57.98	-9.13	QP	
2	0.6620	28.41	18.03	46.44	56.00	-9.56	QP	
3	0.7780	16.12	18.06	34.18	46.00	-11.82	AVG	
4	1.0020	28.74	18.12	46.86	56.00	-9.14	QP	
5	1.1100	14.76	18.12	32.88	46.00	-13.12	AVG	
6	1.3180	29.99	18.13	48.12	56.00	-7.88	QP	
7	1.4340	13.92	18.13	32.05	46.00	-13.95	AVG	
8	1.6580	29.46	18.13	47.59	56.00	-8.41	QP	
9	1.7420	12.32	18.13	30.45	46.00	-15.55	AVG	
10	2.0540	30.31	18.14	48.45	56.00	-7.55	QP	
11	2.0900	11.73	18.14	29.87	46.00	-16.13	AVG	
12	4.3900	12.10	18.19	30.29	46.00	-15.71	AVG	

4. Radiation Spurious Emission and Band Edge

4.1. Test Standard and Limit

Test Standard	FCC Part15 C Section 15.209 and 15.205				
Test Limit	Frequency (MHz)	Field strength (microvolt/meter)	Limit (dBuV/m)	Remark	Measurement distance (m)
	0.009MHz~0.490MHz	2400/F(kHz)	-	-	300
	0.490MHz-1.705MHz	24000/F(kHz)	-	-	30
	1.705MHz-30MHz	30	-	-	30
	30MHz~88MHz	100	40.0	Quasi-peak	3
	88MHz~216MHz	150	43.5	Quasi-peak	3
	216MHz~960MHz	200	46.0	Quasi-peak	3
	960MHz~1000MHz	500	54.0	Quasi-peak	3
	Above 1000MHz	500	54.0	Average	3
-		74.0	Peak	3	

Remark:

(1)The lower limit shall apply at the transition frequency.

(2) 15.35(b), Unless otherwise specified, the limit on peak radio frequency emissions is 20dB above the maximum permitted average emission limit applicable to the equipment under test. This peak limit applies to the total peak emission level radiated by the device.

4.2. Test Setup

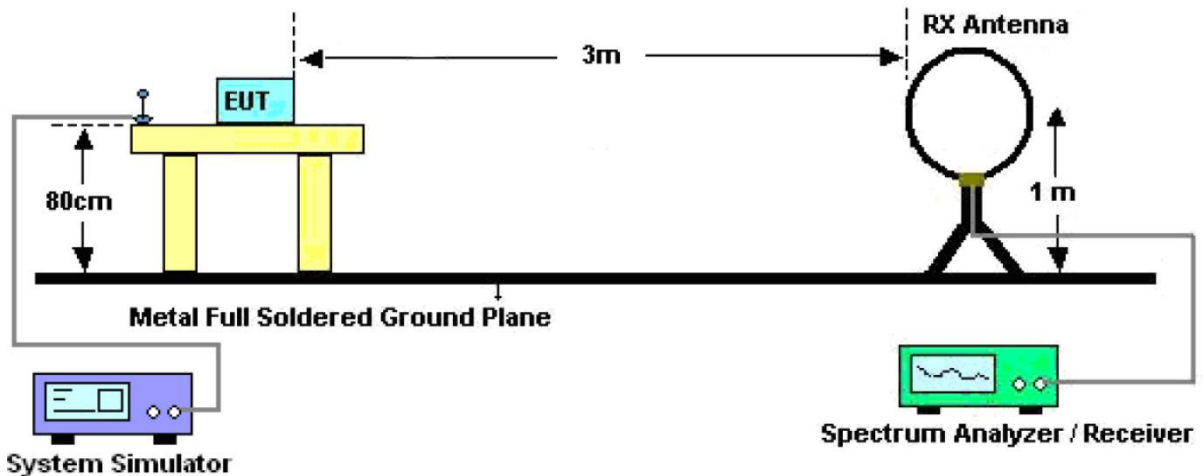


Figure 1. Below 30MHz

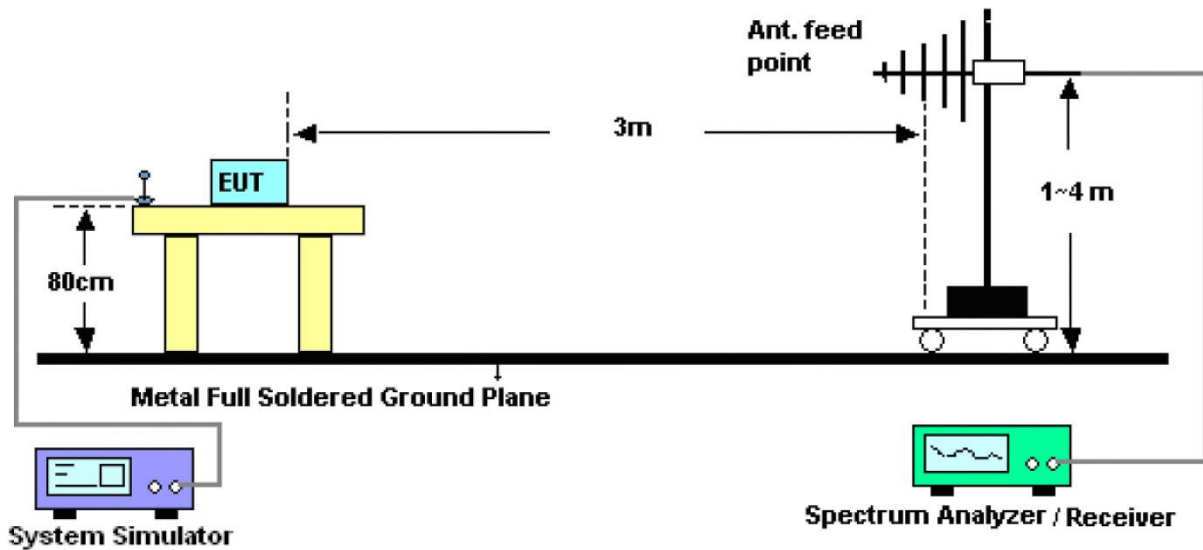


Figure 2. 30MHz to 1GHz

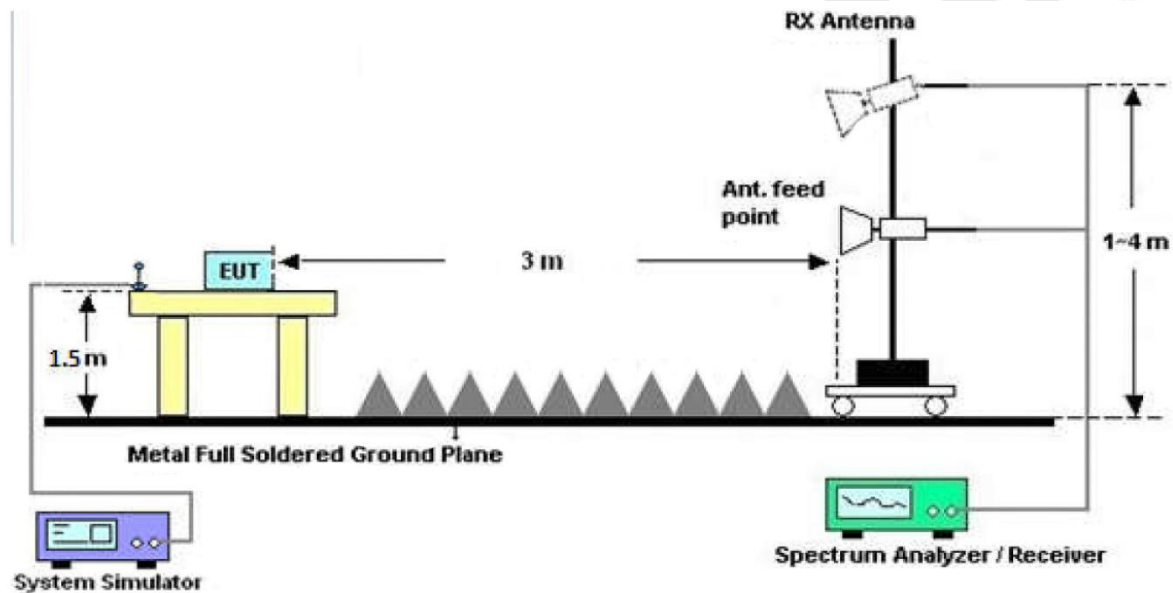


Figure 3. Above 1 GHz

4.3. Test Procedure

For below 1GHz: The EUT is placed on a turntable, which is 0.8m above the ground plane.

For above 1GHz: The EUT is placed on a turntable, which is 1.5m above the ground plane.

The turn table can rotate 360 degrees to determine the position of the maximum emission level. The EUT is set 3 meters away from the receiving antenna which is mounted on a antenna tower. The antenna can be moved up and down from 1 to 4 meters to find out the maximum emission level. Rotated the EUT through three orthogonal axes to determine the maximum emissions, both horizontal and vertical polarization of the antenna are set on test. The EUT is tested in 9*6*6 Chamber. The device is evaluated in xyz orientation.

For 9kHz to 150kHz, Set the spectrum analyzer as:

RBW = 200Hz, VBW = 1kHz, Detector= Quasi-Peak, Trace mode= Max hold, Sweep- auto couple.

For 150kHz to 30MHz, Set the spectrum analyzer as:

RBW = 9KHz, VBW =30kHz, Detector= Quasi-Peak, Trace mode= Max hold, Sweep- auto couple.

For 30MHz to 1000MHz, Set the spectrum analyzer as:

RBW = 100kHz, VBW =300kHz, Detector= Quasi-Peak, Trace mode= Max hold, Sweep- auto couple.

4.4. Test Data

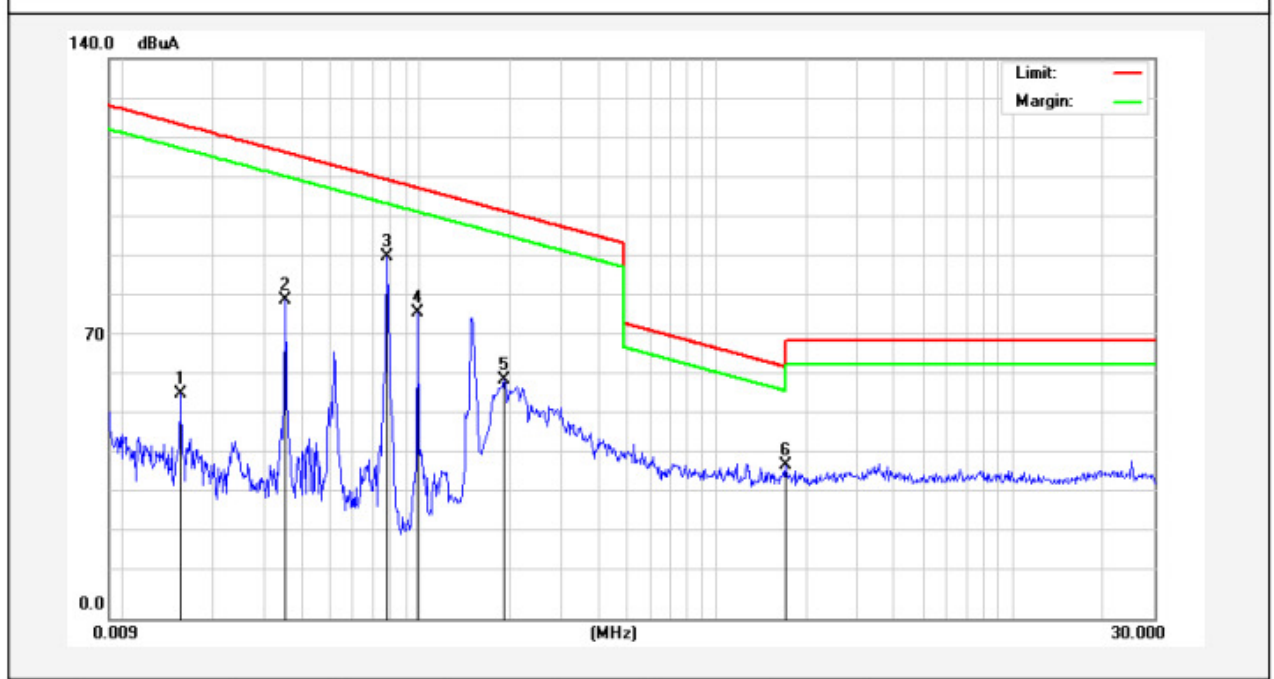
PASS

Anbotek

Test Results

(Between 9KHz – 30MHz)

Job No.:	SZAWW180118002-01		
Standard:	FCC PART15 C _3m	Power Source:	AC 120V, 60Hz for adapter
Test item:	Radiation Test	Temp.(C)/Hum.(%RH):	24.4(C)/50 %RH
Test Mode:	Keeping TX+Charging mode	Distance:	3m

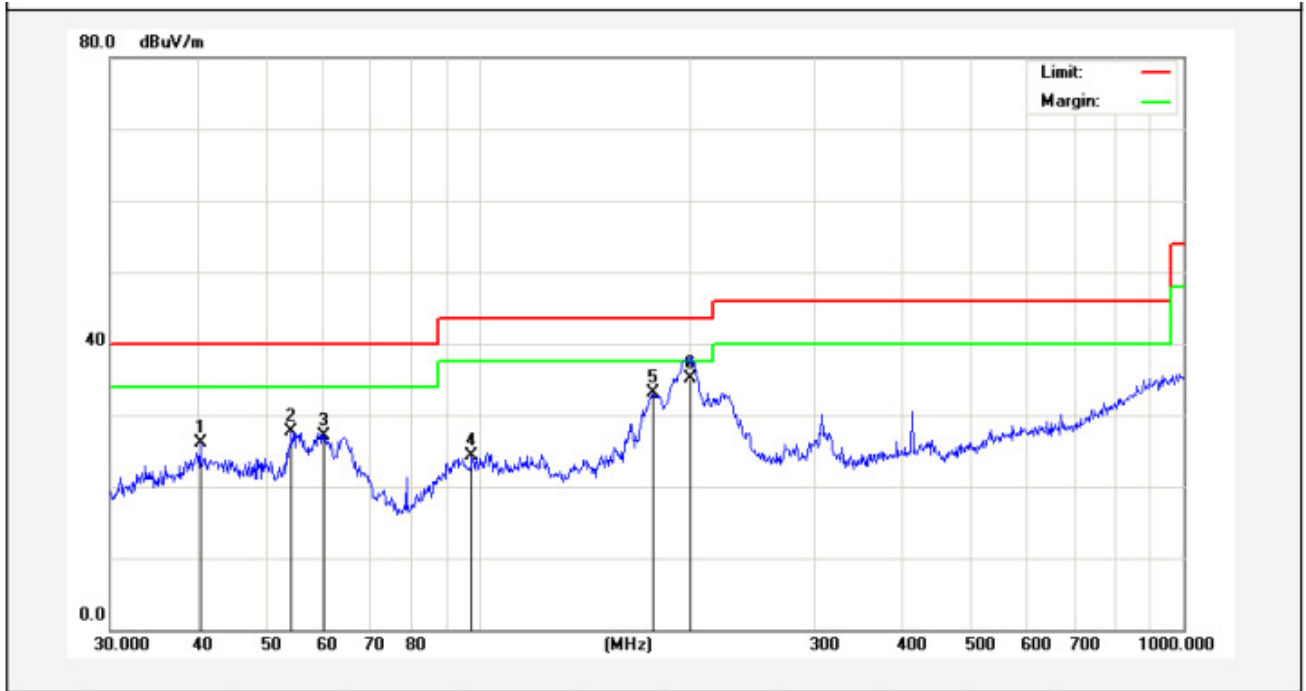


Frequency (MHz)	Read Level (dBuV)	Antenna Factor (dB/m)	Cable Loss (dB)	Preamp Factor	Level (dBuV/m)	Limit (dBuV/m)	Over Limit (dB)	Detector
				(dB)				
0.0158	39.44	19.3	2.53	0	56.21	123.46	-67.25	Peak
0.0158	33.46	19.3	2.53	0	50.23	103.46	-53.23	AV
0.0354	64.22	19.3	2.53	0	80.99	116.25	-35.26	Peak
0.0354	58.37	19.3	2.53	0	75.14	96.25	-21.11	AV
0.0782	73.86	19.29	2.54	0	90.61	109.65	-19.04	Peak
0.0782	64.52	19.29	2.54	0	81.27	89.65	-8.38	AV
0.099	59.53	19.36	2.55	0	76.34	107.61	-31.27	Peak
0.099	50.06	19.36	2.55	0	66.87	87.61	-20.74	AV
0.194	42.55	19.63	2.59	0	59.59	101.48	-41.89	Peak
0.194	30.73	19.63	2.59	0	47.77	81.48	-33.71	AV
1.7177	20.77	20.32	2.6	0	38.49	65.37	-26.88	QP

Remark: According to FCC PART 15.209 (d), the emission limits for the frequency bands 9–90 kHz, 110–490 kHz and above 1000 MHz, Radiated emission limits in these three bands are based on measurements employing an average detector.

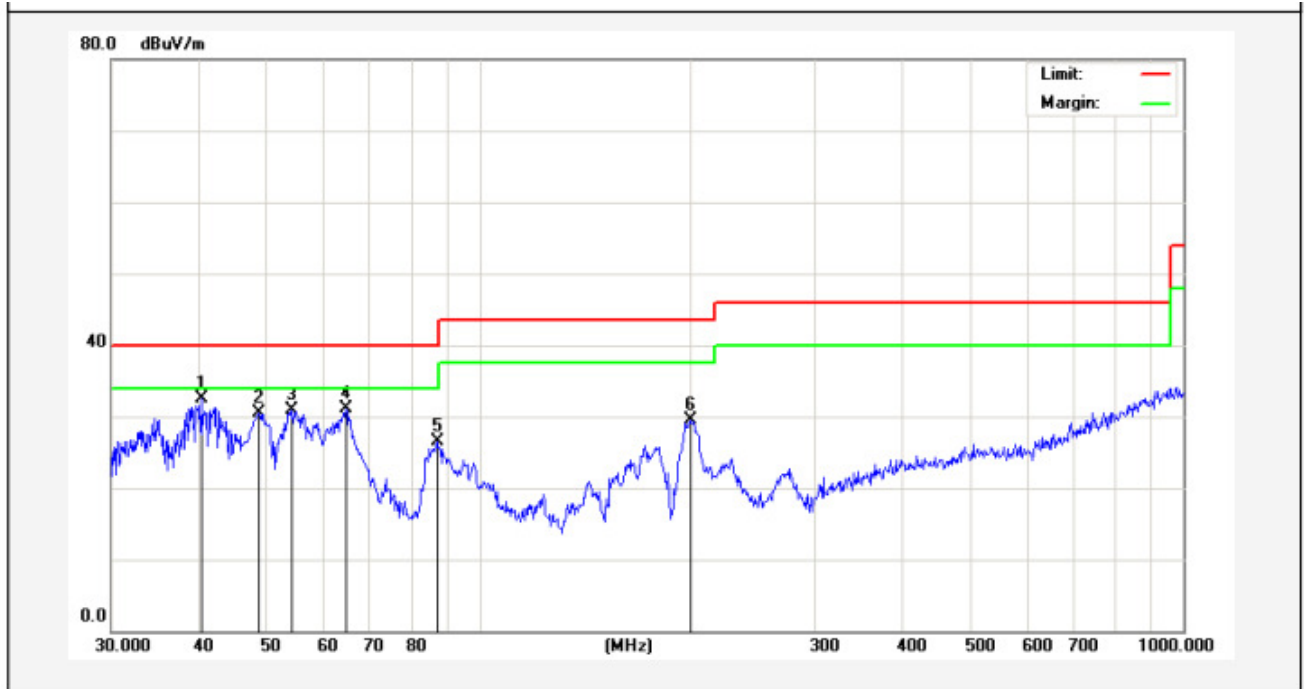
(Between 30MHz –1000 MHz)

Job No.:	SZAWW180118002-01	Polarization:	Horizontal
Standard:	FCC PART15 C _3m	Power Source:	AC 120V, 60Hz for adapter
Test item:	Radiation Test	Temp.(C)/Hum.(%RH):	24.4(C)/50%RH
Test Mode:	Keeping TX+Charging mode	Distance:	3m



No.	Freq. (MHz)	Reading (dBuV/m)	Factor (dB/m)	Result (dBuV/m)	Limit (dBuV/)	Over Limit (dB)	Detector	Height (cm)	degree (deg)	Remark
1	40.2757	34.49	-8.43	26.06	40.00	-13.94	QP	300	13	
2	54.2610	38.35	-10.70	27.65	40.00	-12.35	QP	300	33	
3	60.2801	38.27	-11.10	27.17	40.00	-12.83	QP	300	121	
4	97.7983	39.24	-14.97	24.27	43.50	-19.23	QP	300	214	
5	176.8878	46.85	-13.75	33.10	43.50	-10.40	QP	300	267	
6	199.9856	48.06	-12.87	35.19	43.50	-8.31	QP	300	279	

Job No.:	SZAWW180118002-01	Plarization:	Vertical
Standard:	FCC PART15 C _3m	Power Source:	AC 120V, 60Hz for adapter
Test item:	Radiation Test	Temp.(C)/Hum.(%RH):	24.4(C)/50%RH
Test Mode:	Keeping TX+Charging mode	Distance:	3m



No.	Freq. (MHz)	Reading (dBuV/m)	Factor (dB/m)	Result (dBuV/m)	Limit (dBuV/)	Over Limit (dB)	Detector	Height (cm)	degree (deg)	Remark
1	40.2757	39.87	-7.43	32.44	40.00	-7.56	QP	300	16	
2	48.6719	39.71	-9.24	30.47	40.00	-9.53	QP	300	77	
3	54.2610	40.59	-9.70	30.89	40.00	-9.11	QP	300	152	
4	64.6594	42.89	-11.75	31.14	40.00	-8.86	QP	300	179	
5	87.1117	38.25	-11.66	26.59	40.00	-13.41	QP	300	242	
6	199.2855	38.28	-8.87	29.41	43.50	-14.09	QP	300	266	

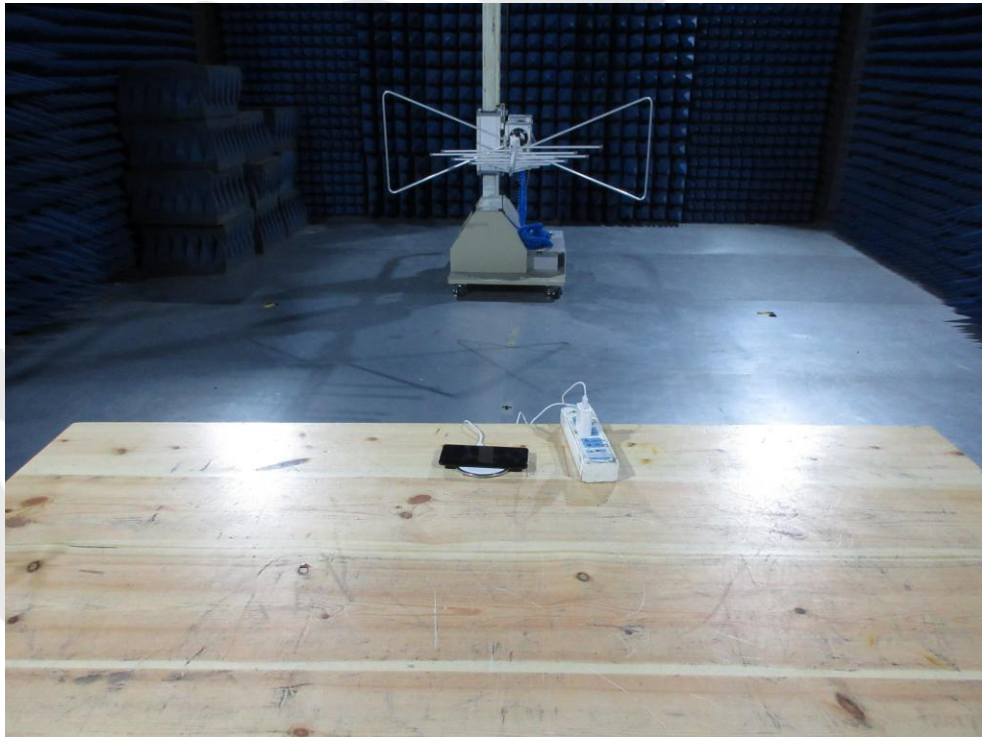


APPENDIX I -- TEST SETUP PHOTOGRAPH

Photo of Conducted Emission Measurement



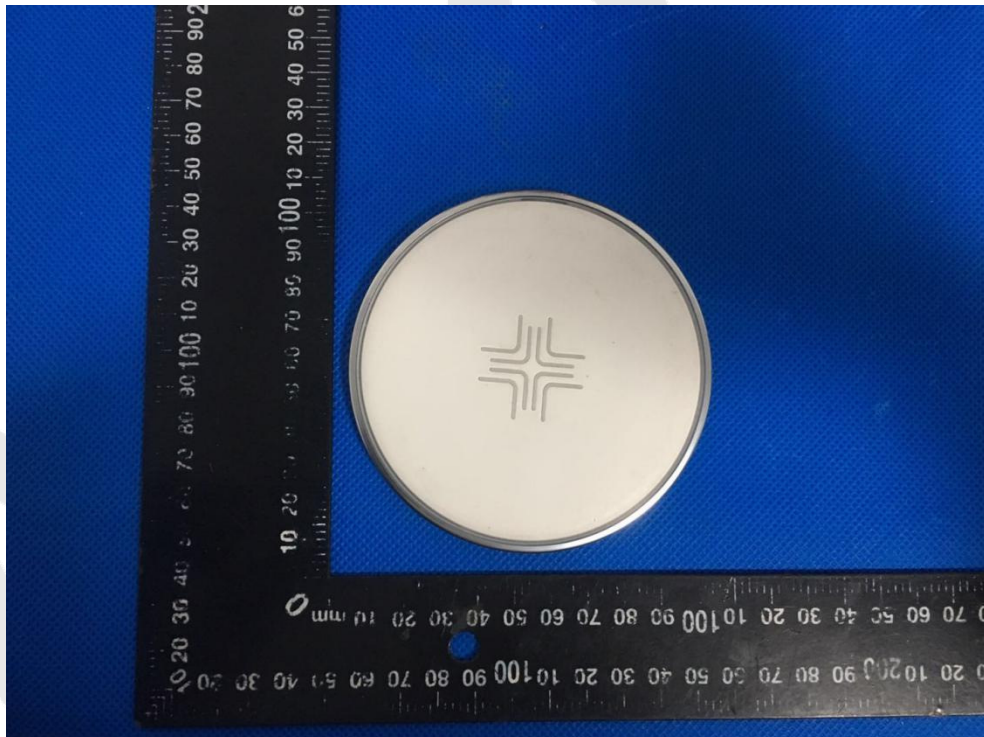
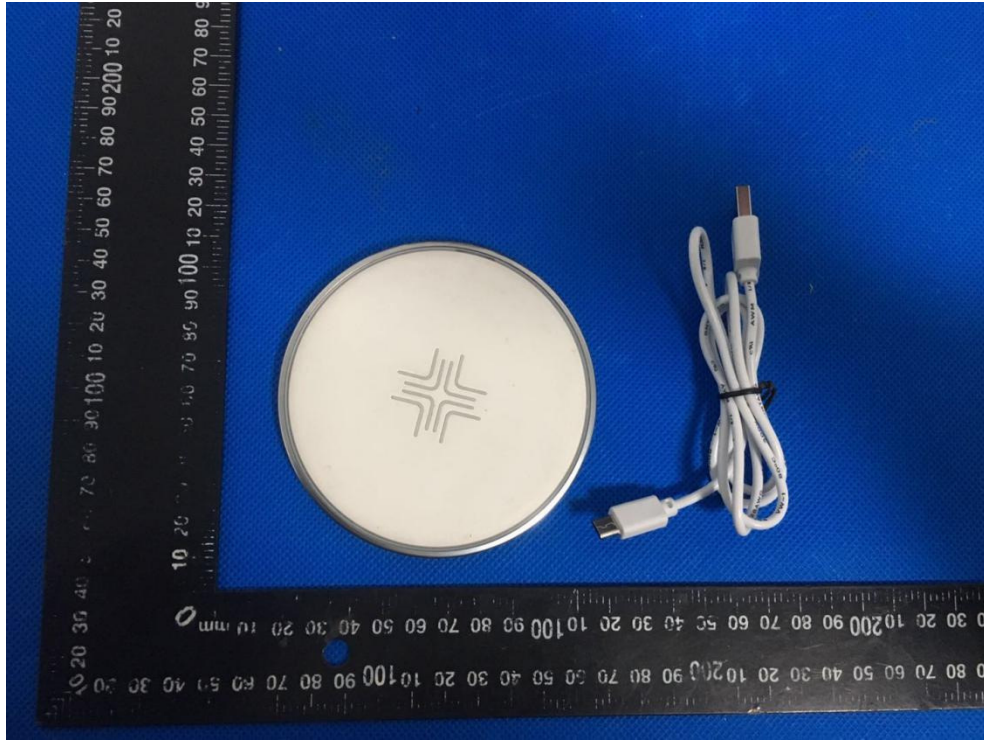
Photo of Radiation Emission Test

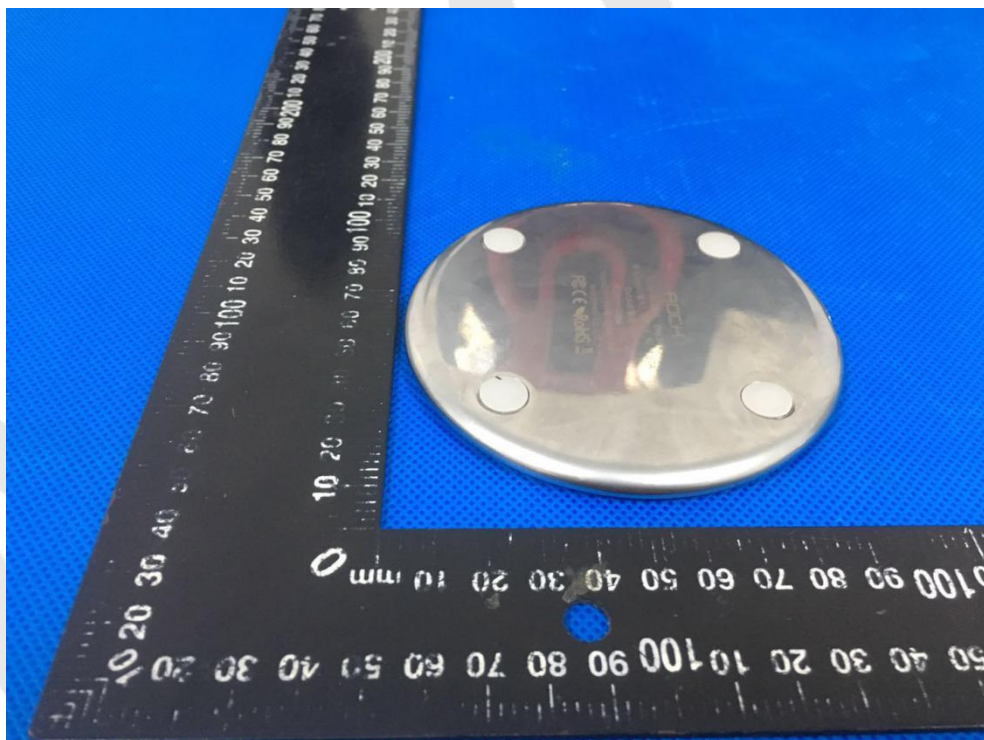
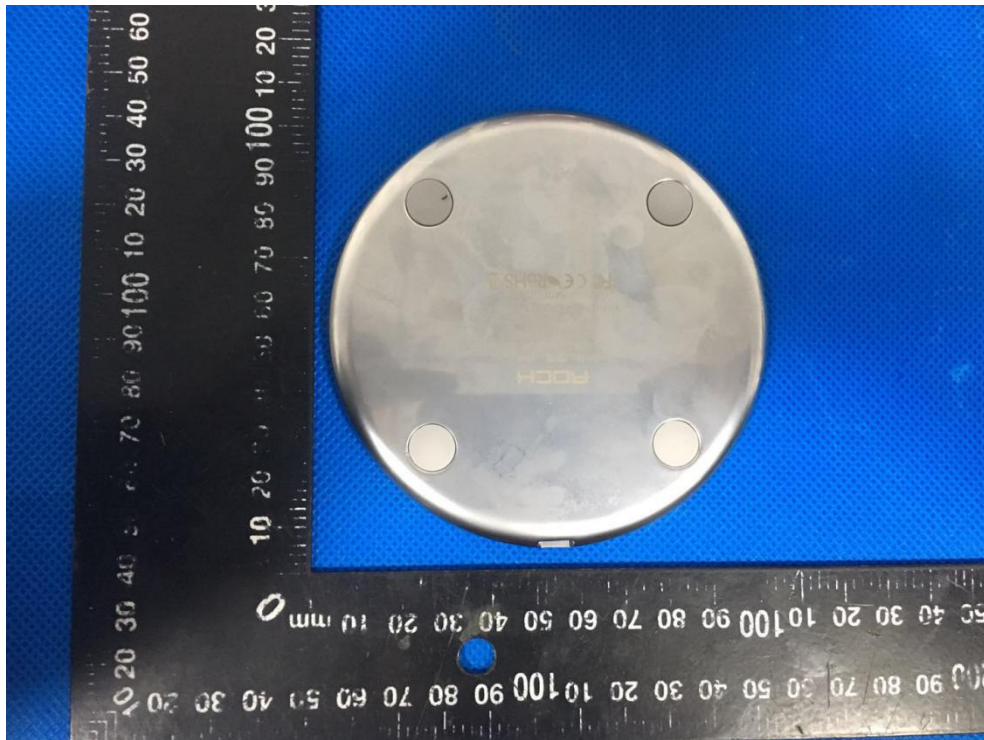


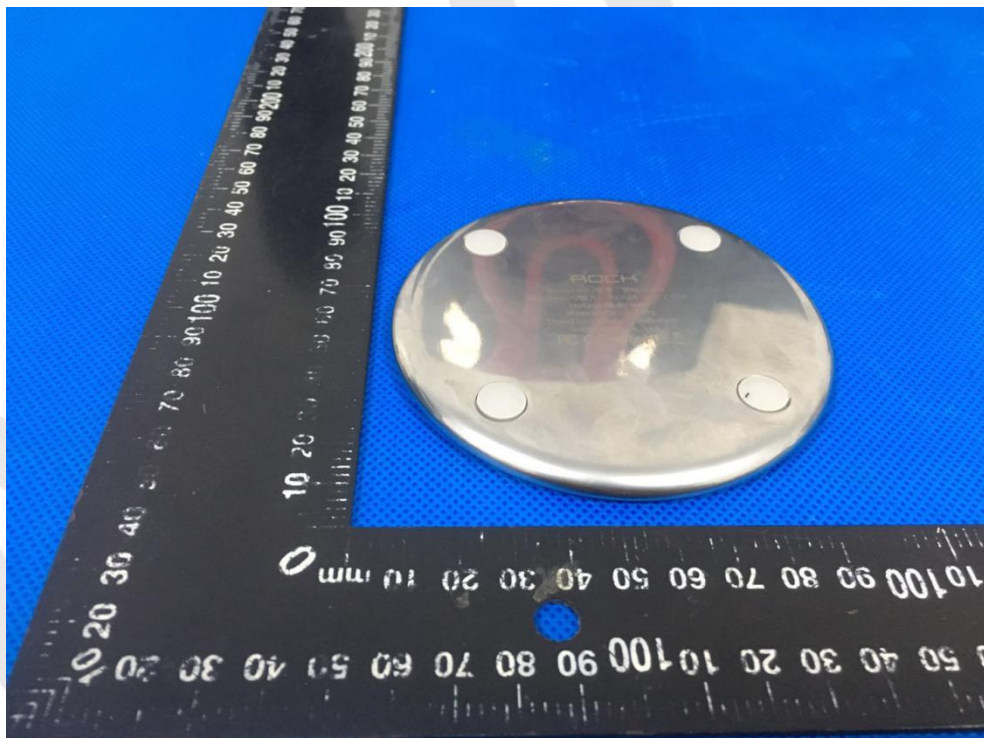
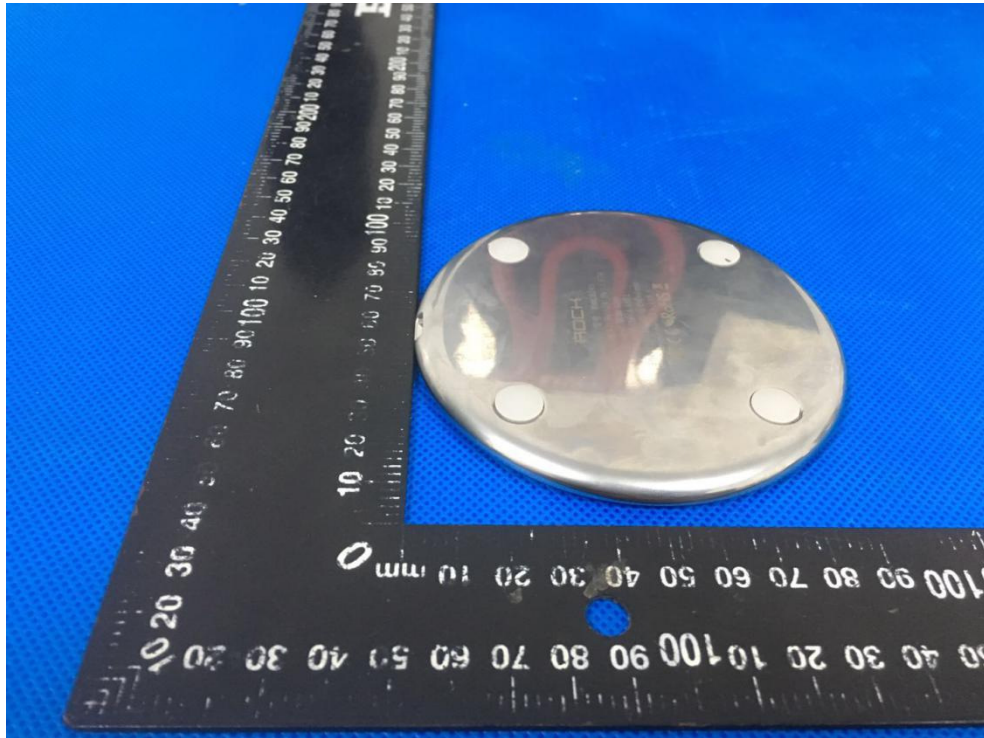


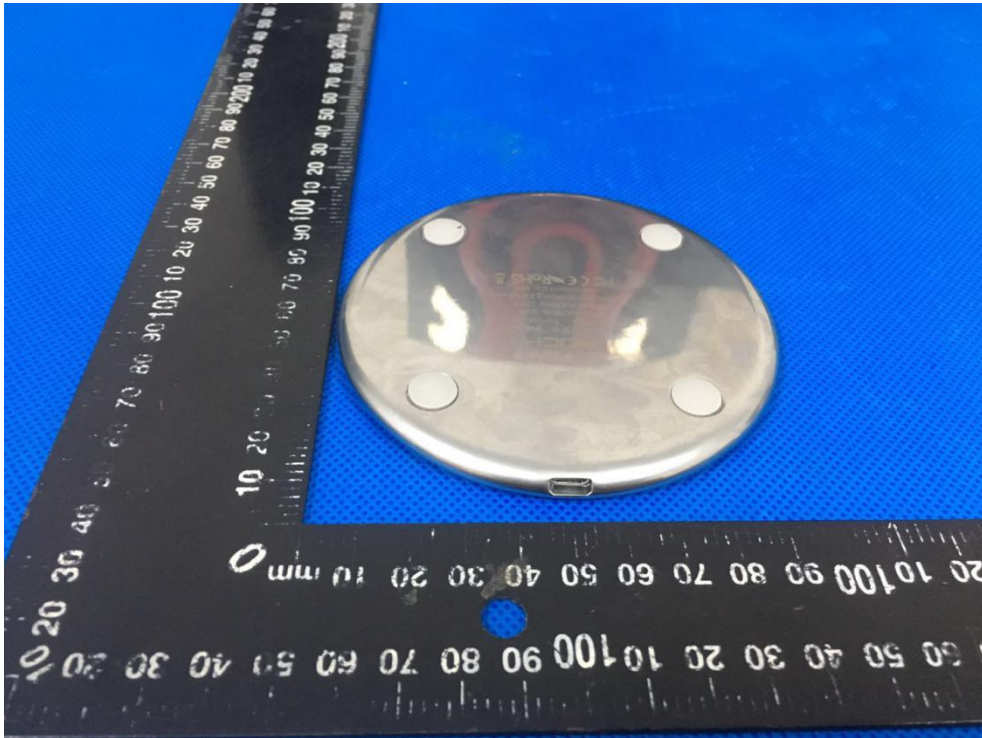
Anbotek

APPENDIX II -- EXTERNAL PHOTOGRAPH



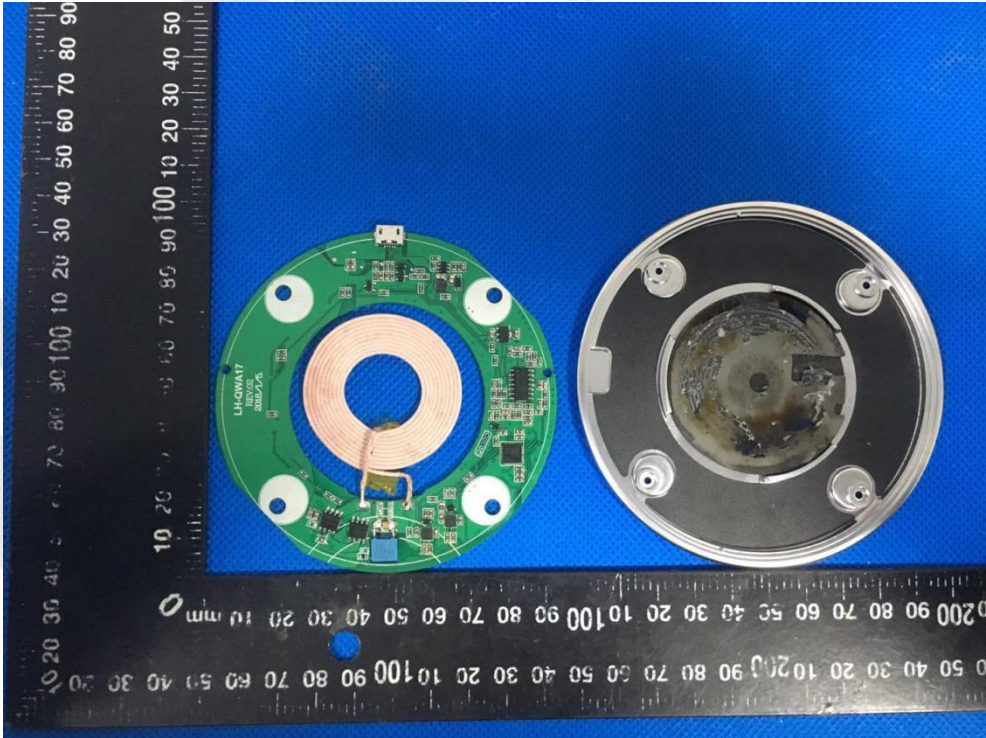
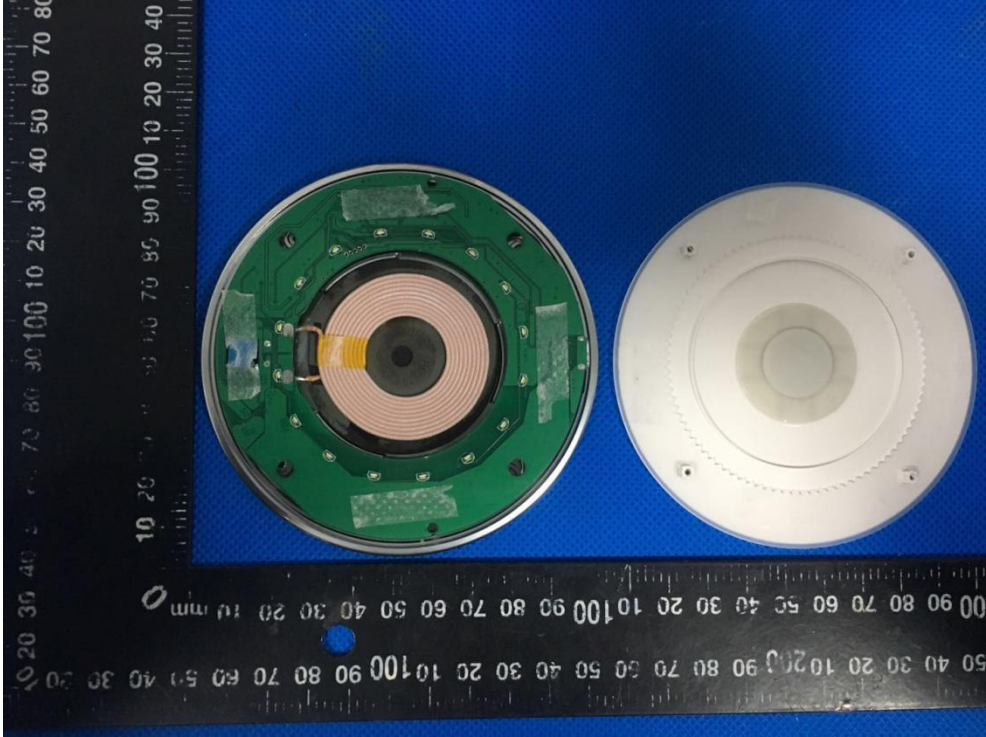


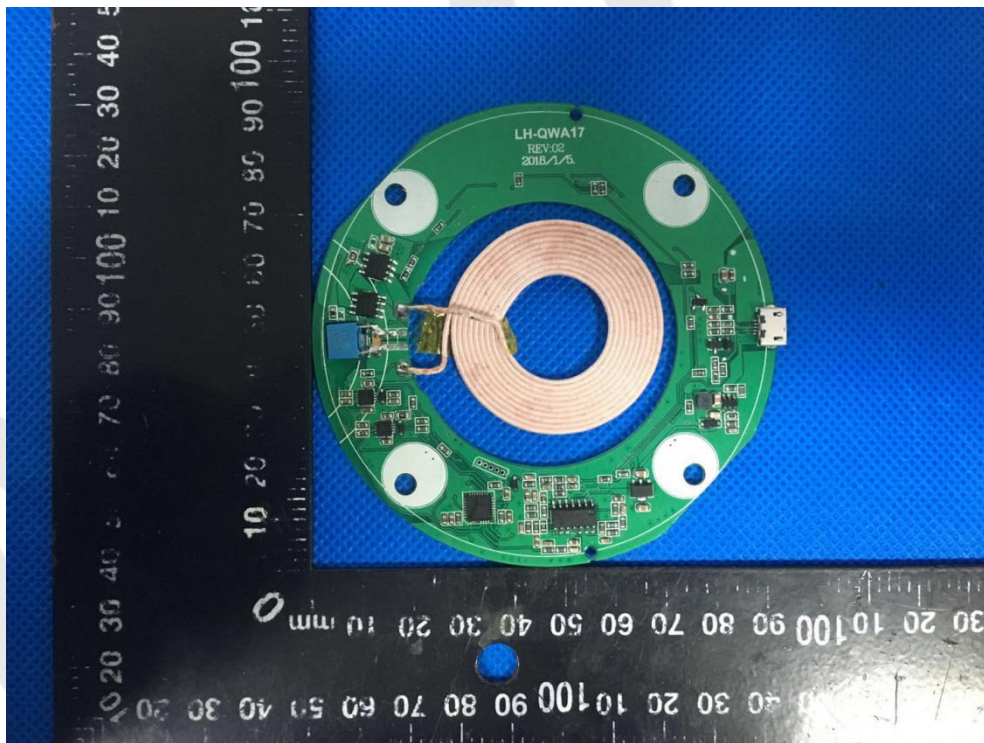
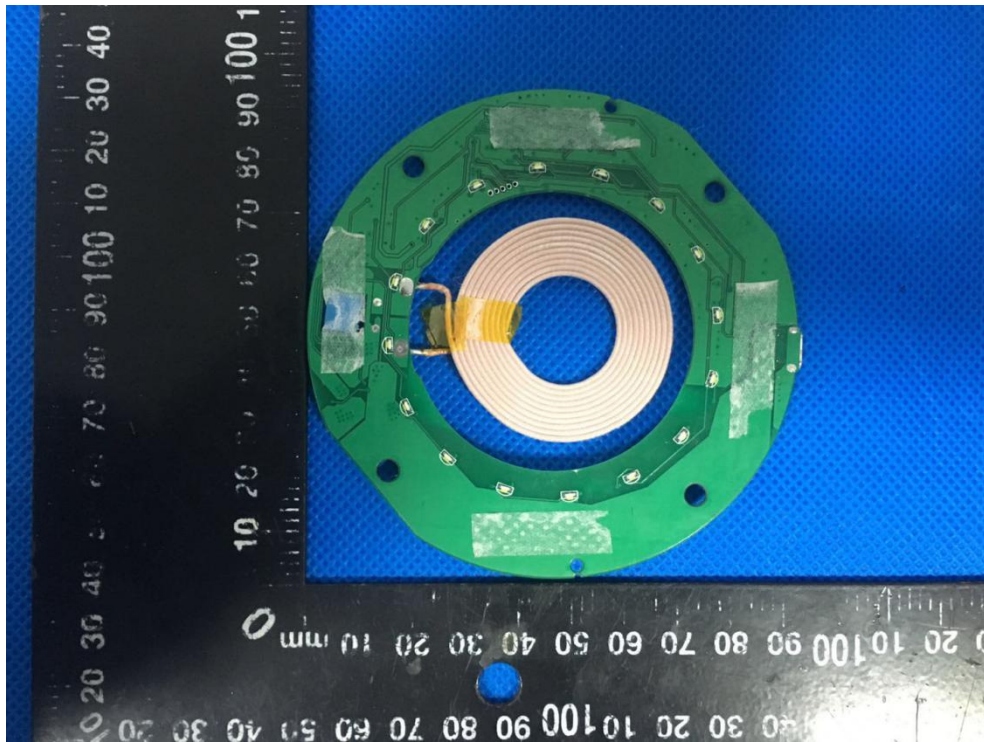


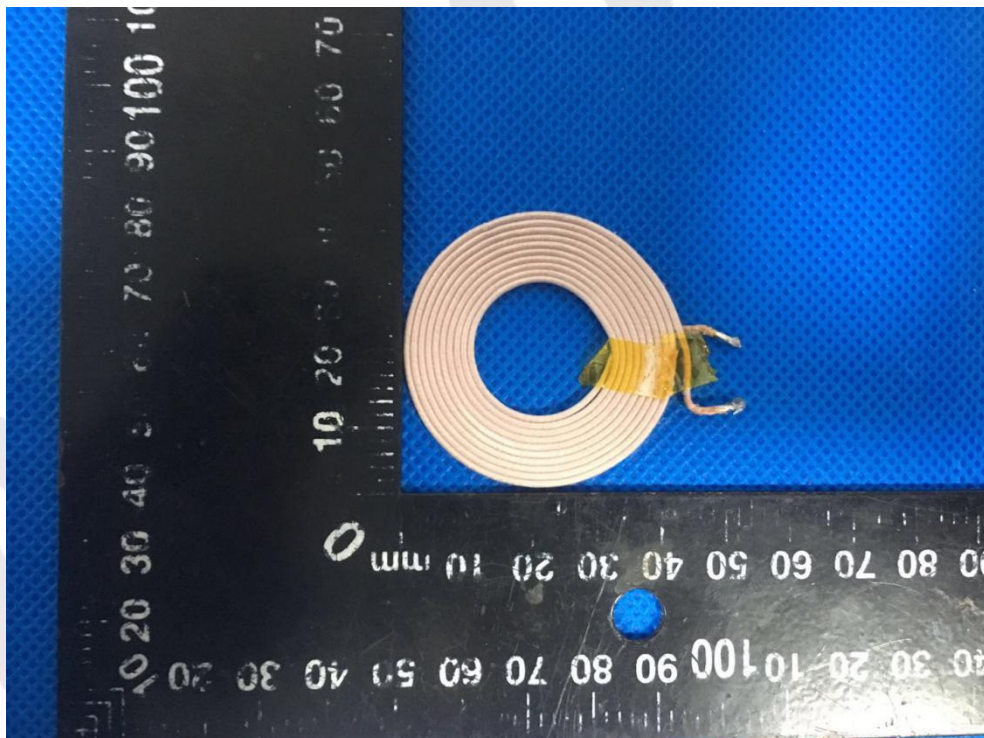
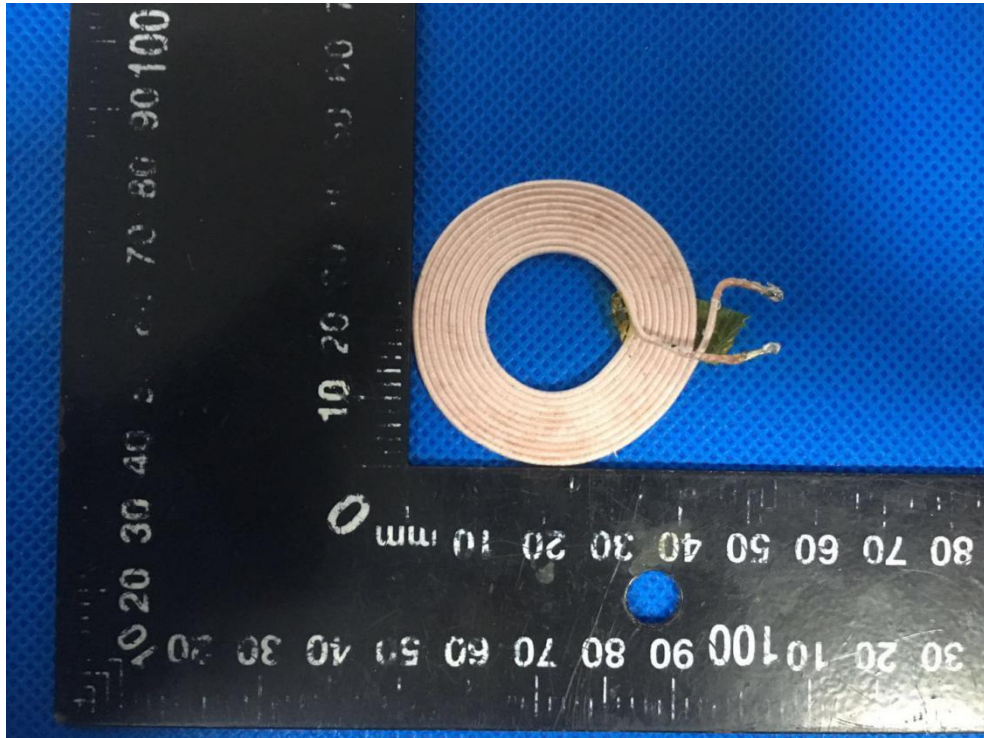


Anbotek

APPENDIX III -- INTERNAL PHOTOGRAPH







End of Report