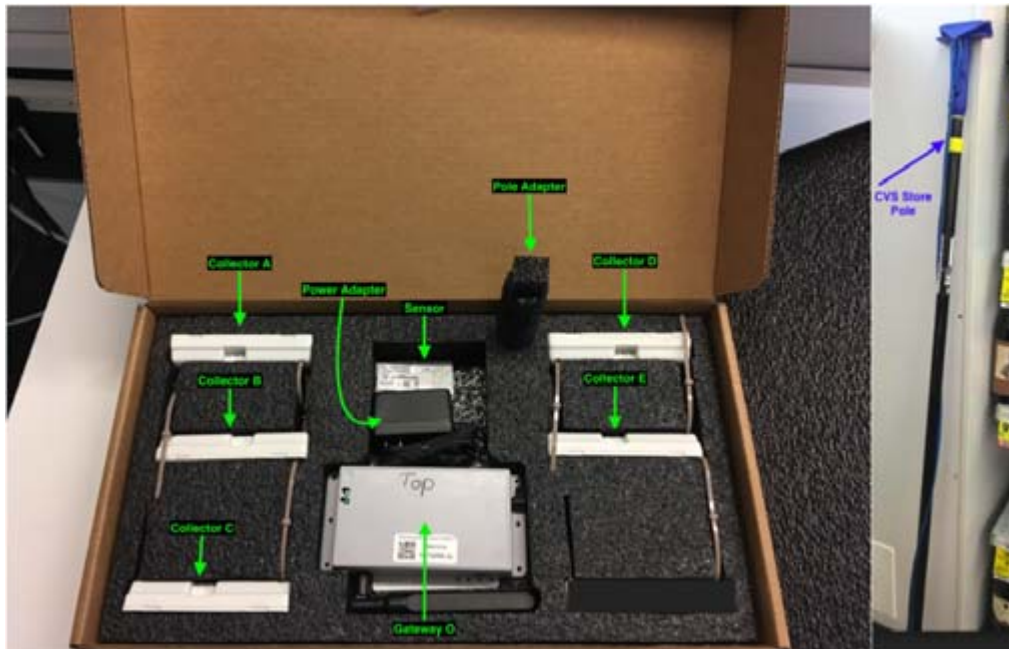


## CVS Installation Process

- Store kit provides the following
  - 1 Gateway
  - 1 Power Adapter
  - 5 Collectors
  - 2 Sensors
  - 1 Pole attachment for collector
  - 1 Store Installation Map
  - 1 Cleaning Wipe
- Additional item needed from CVS store
  - CVS Store Pole

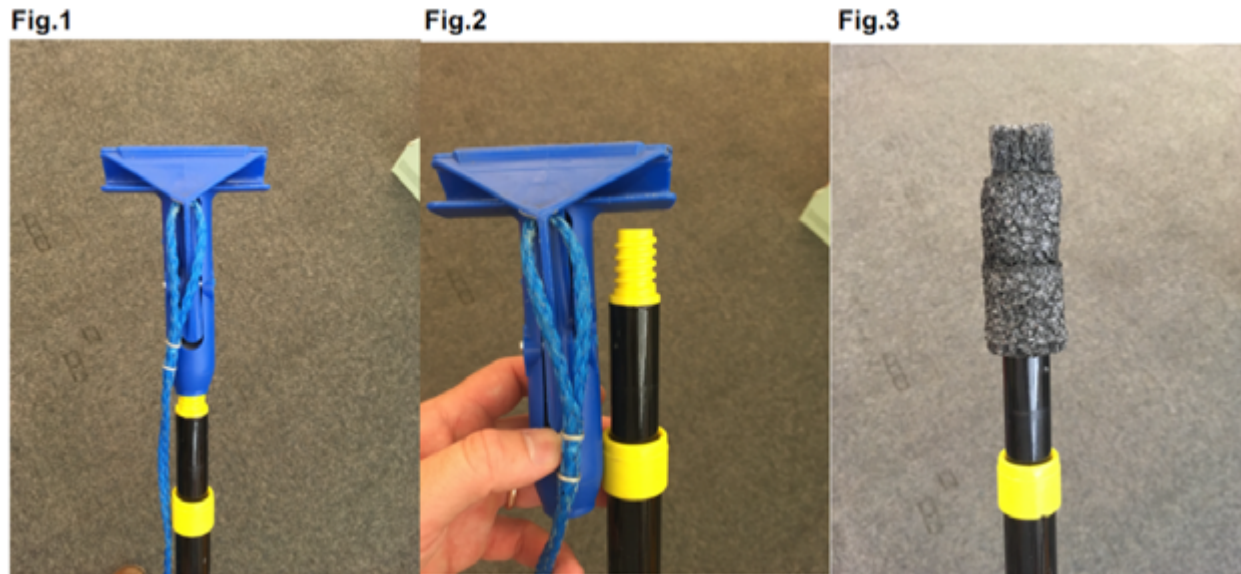


### Step 1: Understanding Equipment Placement

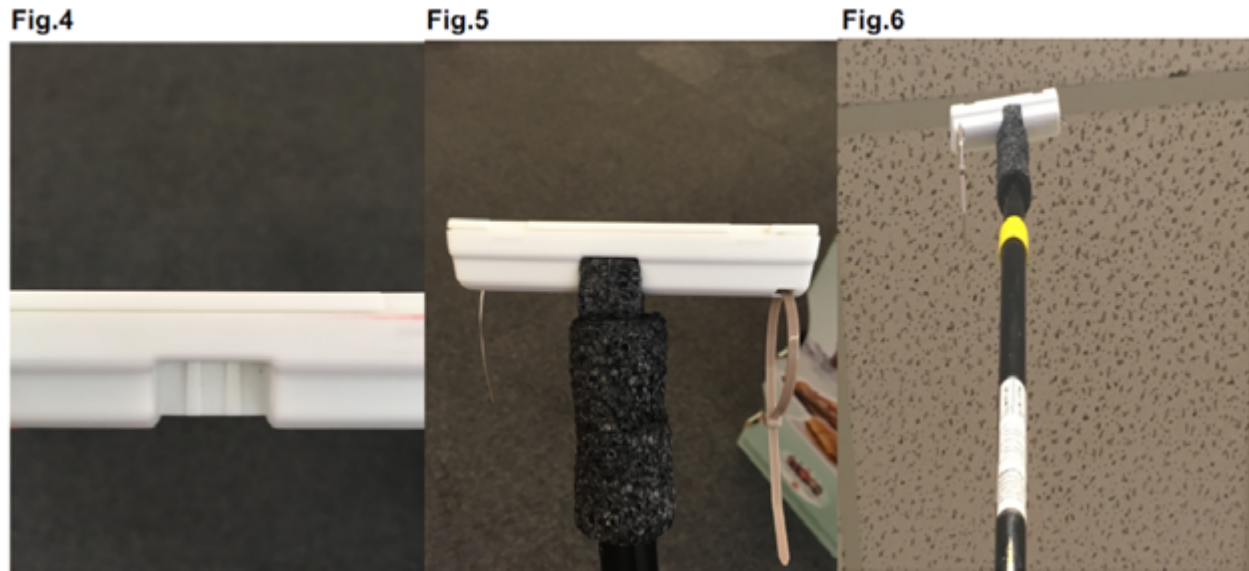
- Your equipment is labeled with a specific letter of the alphabet, symbol and or numerical value. It is very important moving forward that you match the letter on the equipment with the letter on your store installation map. Location of letters cannot be mixed and must align with the general vicinity of the map.

- Letters are visible on the bottom of the Collectors.
- Symbol is visible on the top of the Gateways.
- Numerical values are designated for the sensors and are labeled on the front of bag.
- Please locate your Store Installation Map from your packet and review.

## Step 2: Installing collectors (A-E)



- Locate your stores expandable pole (you may need to ask the store manager where they keep the pole for hanging signs) Fig.1
- detach/unscrew head/claw of pole and place the bottom of foam collector pole attachment to the end.



- The middle indent of collector will slip into the cut of the pole attachment foam top. Fig.4, Fig.5
- All collectors are magnetic and will attach to the metal grid of the ceiling. Fig.6
- To extend the pole turn the yellow fastener counter clockwise until top of pole is loose and extends. Find your desired height and tighten yellow fastener turning clockwise
- Follow your installation map starting from the “STAR” which is always the store entrance.
- Selling Floor Collectors - Walk to location A on your map which will always be the front and center of the retail store. Find your matching “A” Collector (Letter is labeled on the bottom of collector)
- Place the collector labeled “A” into the poles collector attachment and raise it up to the ceiling's metal grid. The collector should latch onto the metal. Fig.5, Fig.6
- If foam does not hold the collector while raising place 2 toothpicks next to the slit for the indent to keep sturdy. Fig 8.1
- Walk to location B on your map which will always be in the back/right of the selling floor. Find your matching “B” Collector and attach to the metal grid of ceiling. Fig.5, Fig.6
- Walk to location C on your map which will always be in the back/left of the selling floor. Find your matching “C” Collector and attach to the metal grid of ceiling. Fig.5, Fig.6

**Fig.7****Fig.8****Fig 8.1**

- Stockroom Collectors - Enter the Stockroom of the store. Walk to location “D” on your map which will always be the Back/Right of the stockroom. Find your matching “D” Collector and attach to anything metal on the ceiling. Fig.7, Fig.8
- Walk to location “E” on your map which will always be the Back/Left of the stockroom. Find your matching “E” Collector and attach to anything metal on the ceiling. Fig.7, Fig.8
- Installation of Collectors is complete re-attach the head/claw of store pole and return.

Step 3: Installing the Gateway (Circle symbol)

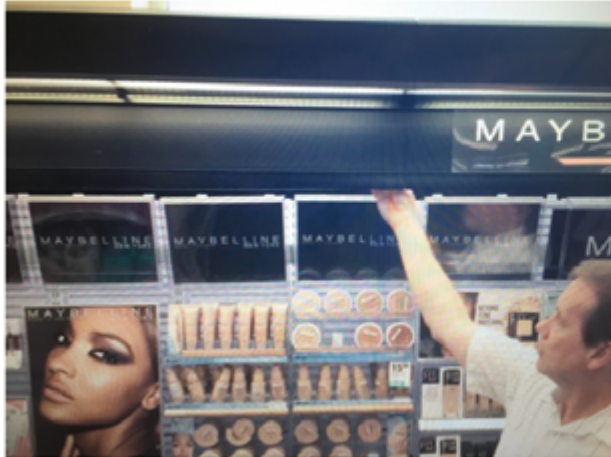
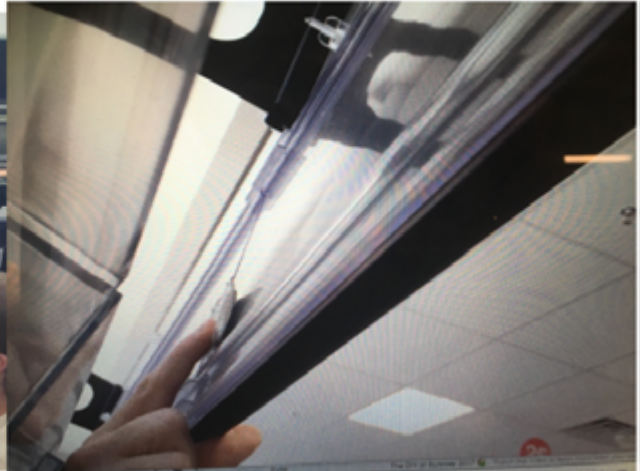
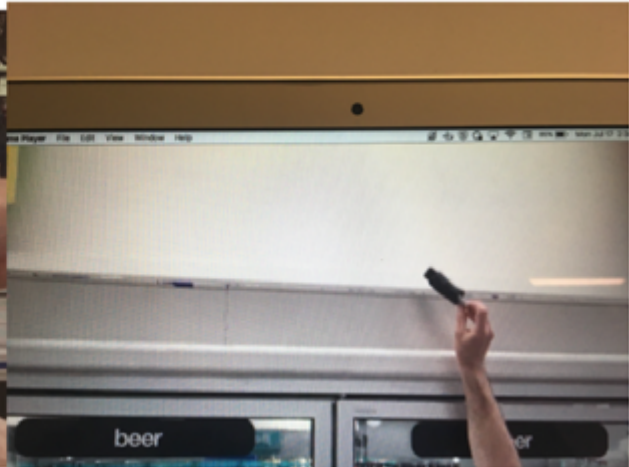
**Fig.9 Metal communication board where wires come into the stockroom****Fig.10 Wood Communication board where wires come into the stockroom****Fig.11**

- Your gateway should be labeled with a circle symbol and is the larger box with a plug-in adapter, antennas and twin stick tape attached to the back. This device will need to be plugged into an outlet preferably in the backroom attached to the phone board. If no power is available in the preferred location anywhere that has a plug available will do the trick. Fig.9, Fig.10, Fig.11
- Locate the phone board in the back wall of the stockroom. Find a nearby outlet for power. If area is dusty wipe down with the cleaning wipe provided. Fig.9, Fig.10, Fig.11
- Peel the twin stick off the back of the Gateway and adhere it to the phone board or wall next to the outlet. Fig.9, Fig.10, Fig.11
- Plug the Gateway power adapter into the outlet. Fig.9, Fig.10, Fig.11
- In order to comply with FCC RF Exposure requirements, this device must be installed to provide at least 20 cm separation from the human body at all times.



- Installation of Gateway is complete.

#### Step 4: Installing the Sensors (1-2)

**Fig.12****Fig.13****Fig.14****Fig.15**

- You were supplied 2 sensors. Sensors are in a small white pouch and need to be placed in a designated location specified on the installation map.
- Find the sensor labeled "1" and go to the far-right middle selling floor end cap marked as a pentagon with the number "1" on your map. If the right of the store is Beauty please adhere sensor using the twin stick inside the awning which holds the brand names. Fig 12,13
- If Coolers are on the right side please place the sensor inside the hole of your foam pole attachment and toss foam and sensor over the top of the cooler. Fig 14,15

- Find the sensor labeled “2” and go to the middle of the stockroom (1st floor) marked as a pentagon with the number “2” on your map. Peel the twin stick tape from the back and place it on the back wall. Fig.14, Fig.15
- Installation of Sensors is complete.

Step 5: Installation complete

- Throw away attachment along with empty install box. Let the store manager know you have completed your task and thank them for their time.

### FCC IDs

Sensor MB-4-C	Collector CL-3-C	Gateway GW-3-C
FCC ID: 2ALSL-MB-4-C	FCC ID: 2ALSL-CL-3-C	FCC ID: 2ALSL-GW-3-C Contains FCC ID: QIPELS31-V

### FCC RF Exposure Statement

In order to comply with FCC RF Exposure requirements, this device must be installed to provide at least 20 cm separation from the human body at all times.

### FCC Warnings

This device complies with FCC part 15 FCC Rules. Operation is subject to the following two conditions: 1. This device may not cause harmful interference and 2. This device must accept any interference received, including interference that may cause undesired operation

Changes or modifications not approved by Shelfbucks Inc. could void the user’s authority to operate the equipment.

Note: This equipment has been tested and found to comply with the limits for Class B digital device, pursuant to part 15 of the FCC Rules. These limits are designed to provide reasonable protection against harmful interference in a residential installation. This equipment generates, uses and can radiate radio frequency energy and, if not installed and used in accordance with the instructions, may cause harmful interference to radio communications. However, there is no guarantee that interference will not occur in a particular installation. If this equipment does cause harmful interference to radio or television reception, which can be determined by turning the equipment off and on, the user is encouraged to try to correct the interference by one or more of the following measures:

- Reorient or relocate the receiving antenna
- Increase the separation between the equipment and receiver
- Connect the equipment into an outlet on a circuit different from that to which the receiver is connected.
- Consult the dealer or an experienced radio/TV technician for help.

\*\*\*