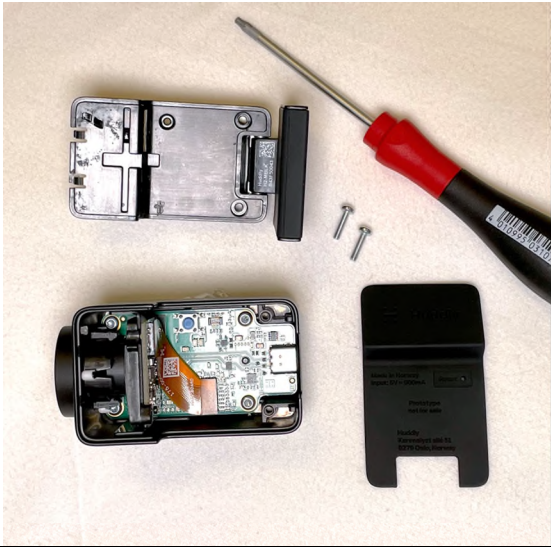
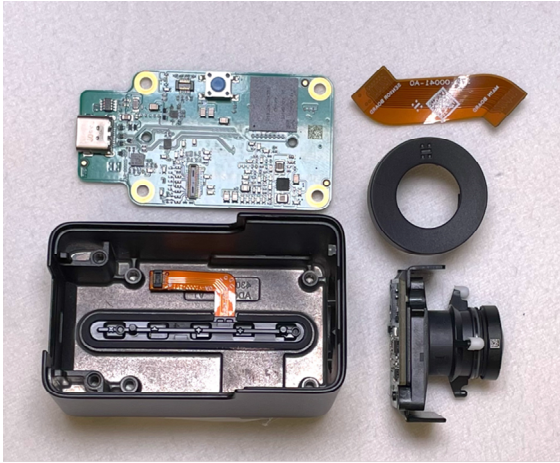


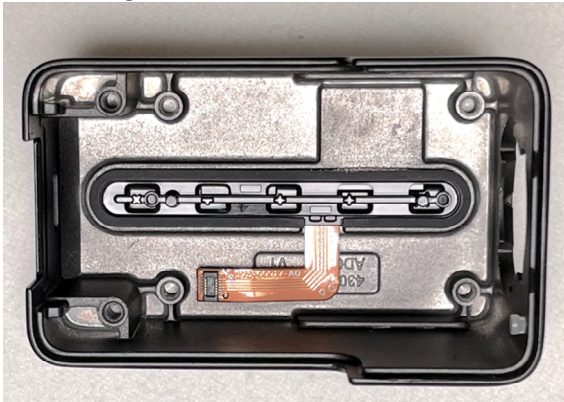
01 Grand Overview



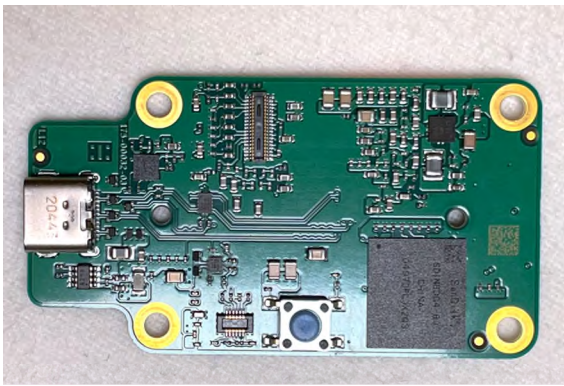
02 Internal Overview



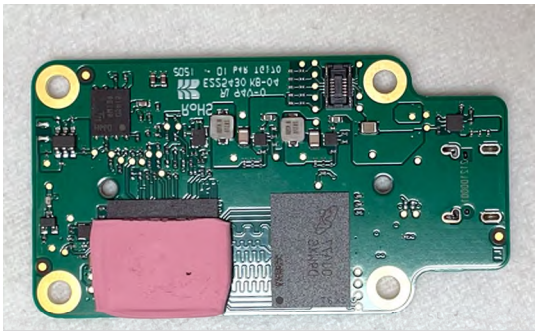
03 Housing Internal



04 PCB side One



05 PCB Side Two



06 Lens-TB



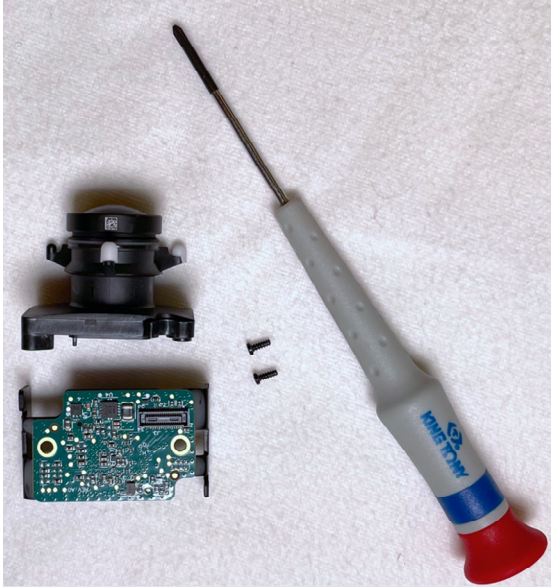
07 Lens-Front



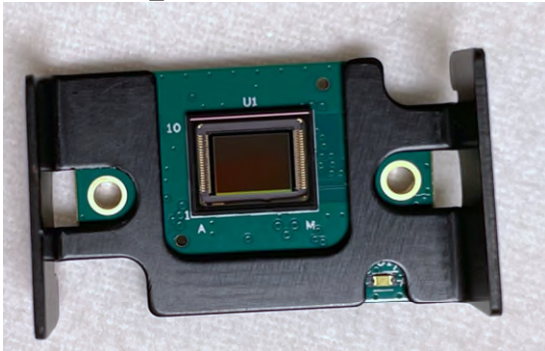
08 Lens-PCB_Back



09 Lens-Separated



10 Lens-PCB_Sensor



11 Lens-FPC_Side_One



12 Lens-FPC_Side_Two

