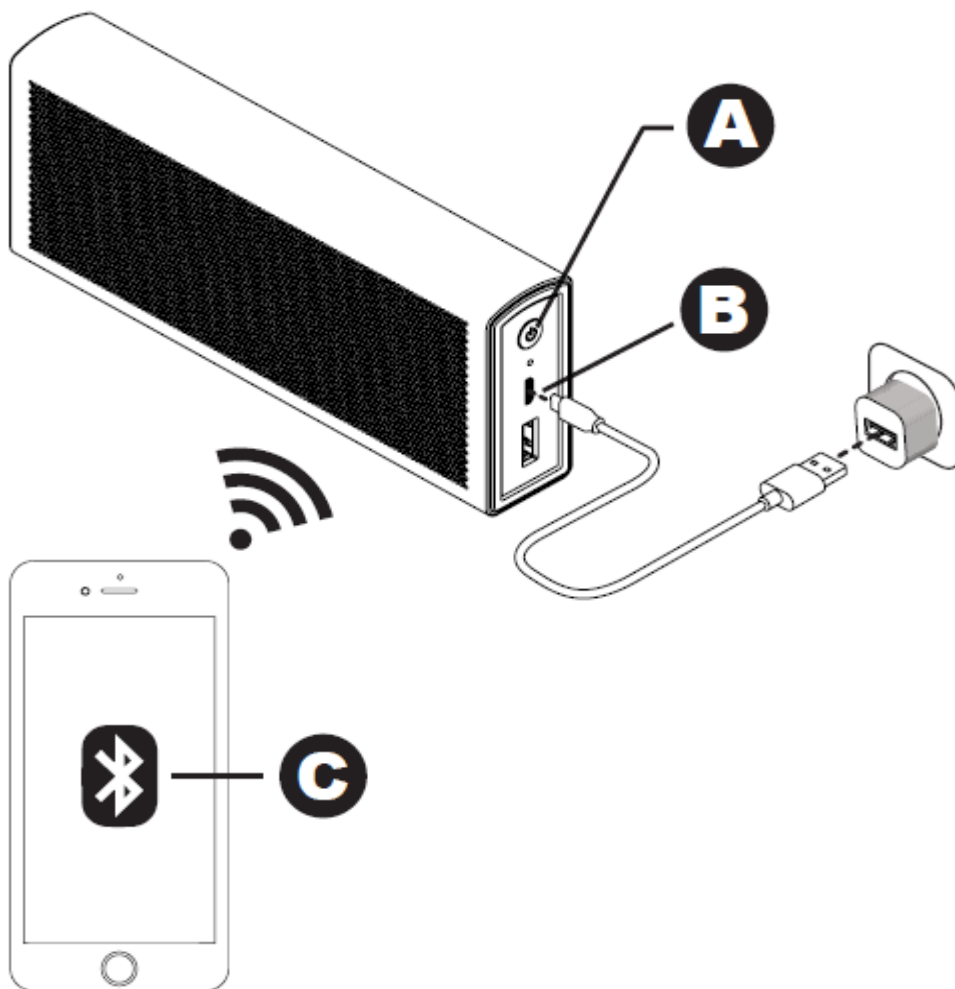


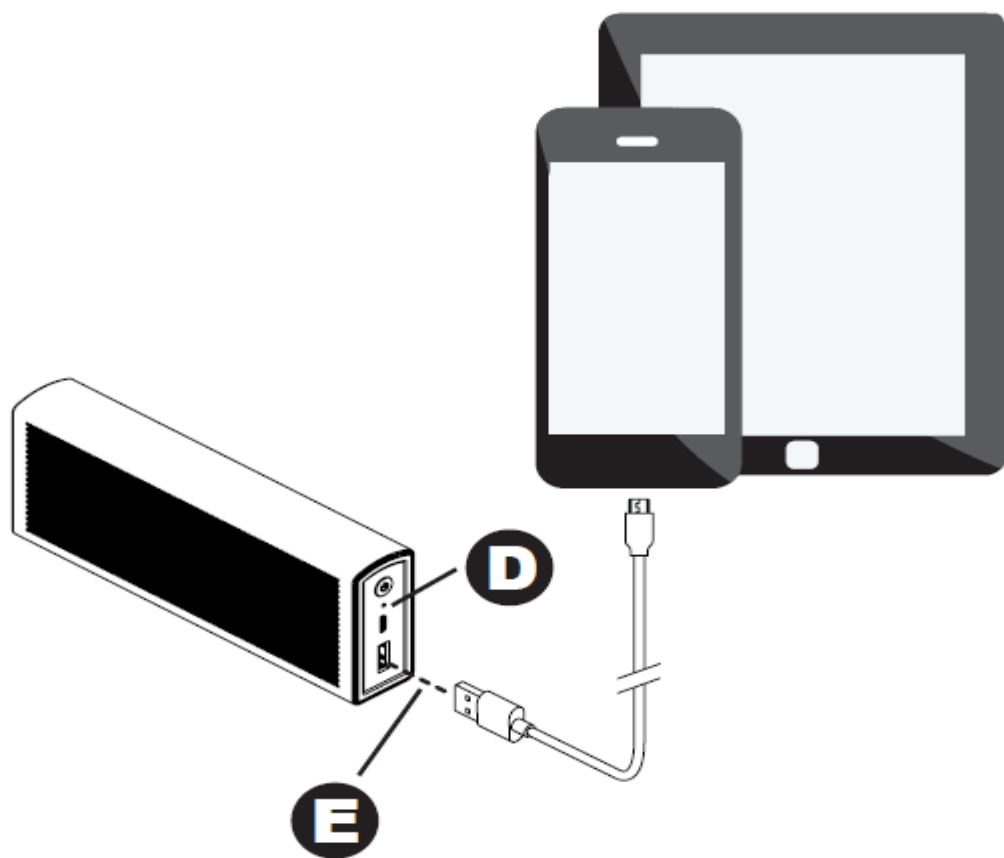
**Product Name:** Bluetooth speaker

**Model:** Ace(AE)

# Speaker

**EN** User Manual





## EN User Manual

- A** On/Off: Hold for 3 seconds. Tap to Play/Pause music.
- B** Charge via input (Micro-B USB 5V/1A).
- C** To Pair: Enable Bluetooth® on your device, select Promo Speaker\* on device Bluetooth® menu.
- D** LED is lit during charging or if smartphone/tablet plugged in. Green LED on: 100% charged.  
LED blinking: Green: 50%-99%, Orange: 20%-49%, Red: 0%-19%.
- E** Charge smartphone/tablet via output (Type-A USB 5V/1A).

\*The speaker's Bluetooth® name may match the logo name on the speaker.

---

### Safety and Compliance Information:

- Do not attempt to disassemble the product or insert items into the product as this may cause short circuits resulting in electrical shock or fire.
- The product contains no user replaceable parts. Only authorised service engineers may open the product.
- This product is not waterproof or water resistant. Exposing the product to rain, moisture or other liquids may damage the product and may result in injury to the user. Do not touch or use with wet hands.
- Do not use in areas where there is the risk of explosion.
- The product package contains small items and packaging that may be hazardous to children and may pose a choking or strangulation hazard. Keep the product, accessories and packaging out of reach of children at all times. This product is not a toy.
- If the product is damaged in any way, pierced, dropped, exposed to liquid, if the product overheats or if the charging cable is damaged discontinue use immediately.
- Do not connect to any input power supply other than stated at the top of this page.
- Always keep the product between 0°C and 45°C. Operation outside this range may damage the product or cause harm to the user.
- CAUTION: The battery used in this product may present a risk of fire, explosion, electrical shock or chemical burn if mistreated.
- The battery in this product is not user replaceable and should only be handled by authorised service engineers.
- Only use the charging cables provided with the Speaker and the charging device, do not charge with other cables.
- Only use a USB charger capable of outputting the stated voltage at the top of this page (not supplied) when connecting to a wall, vehicle or other socket.
- Do not dispose of the product in household waste as this may result in fire, explosion, electrical shock or chemical burn.

## FCC STATEMENT

Compliance Statement: This device complies with Part 15 of the FCC Rules. Operation is subject to the following two conditions:

1. This device may not cause harmful interference, and
2. This device must accept any interference received, including interference that may cause undesired operation.

Warning: Changes or modifications not expressly approved by the party responsible for compliance could void the user's authority to operate the equipment.

Inference Statement: This equipment has been tested and found to comply with the limits for a Class B digital device, pursuant to Part 15 of the FCC Rules. These limits are designed to provide reasonable protection against harmful interference in a residential installation. This equipment generates uses and can radiate radio frequency energy and, if not installed and used in accordance with the instructions, may cause harmful interference to radio communications. However, there is no guarantee that interference will not occur in a particular installation. If this equipment does cause harmful interference to radio or television reception, which can be determined by turning the equipment off and on, the user is encouraged to try to correct the interference by one of the following measures:

- Reorient or relocate the receiving antenna.
- Increase the separation between the equipment and receiver.
- Connect the equipment into an outlet on a circuit different from that to which the receiver is connected.
- Consult the dealer or an experienced radio/TV technician for help.

This portable transmitter with its antenna complies with FCC/IC RF exposure limits for general population/ uncontrolled exposure.

## CE STATEMENT

Hereby, Flashbay Electronics declares that this Speaker is in compliance with the essential requirements and other relevant provisions of Directive 2014/53/EU. The full text of the EU declaration of conformity is available at the following internet address: [www.flashbay.com](http://www.flashbay.com)

The nominal frequency and transmitted power (radiated and/or conducted) used by the radio equipment, as reflected in the Technical Documentation, is:

RF Frequency Band: 2402MHz to 2480MHz.

FCC RF Radiation Exposure Statement Caution: To maintain compliance with the FCC's RF exposure guidelines, place the product at least 20cm from nearby persons.

Radiation Exposure Statement: The product comply with the Canada **portable** RF exposure limit set forth for an uncontrolled environment and are safe for intended operation as described in this manual.

Déclaration d'exposition aux radiations : Le produit est conforme aux limites d'exposition pour les appareils **portable** RF pour les Etats-Unis et le Canada établies pour un environnement non contrôlé.

This device complies with Industry Canada licence-exempt RSS standard(s). Operation is subject to the following two conditions: (1) this device may not cause interference, and (2) this device must accept any interference, including interference that may cause undesired operation of the device.

Under Industry Canada regulations, this radio transmitter may only operate using an antenna of a type and maximum (or lesser) gain approved for the transmitter by Industry Canada. To reduce potential radio interference to other users, the antenna type and its gain should be so chosen that the equivalent isotropically radiated power (e.i.r.p.) is not more than that necessary for successful communication.

Conformément à la réglementation d'Industrie Canada, le présent émetteur radio peut fonctionner avec une antenne d'un type et d'un gain maximal (ou inférieur) approuvé pour l'émetteur par Industrie Canada. Dans le but de réduire les risques de brouillage radioélectrique à l'intention des autres utilisateurs, il faut choisir le type d'antenne et son gain de sorte que la puissance isotrope rayonnée équivalente (p.i.r.e.) ne dépasse pas l'intensité nécessaire à l'établissement d'une communication satisfaisante.

Le présent appareil est conforme aux CNR d'Industrie Canada applicables aux appareils radio exempts de licence. L'exploitation est autorisée aux deux conditions suivantes : (1) l'appareil ne doit pas produire de brouillage, et (2) l'utilisateur de l'appareil doit accepter tout brouillage radioélectrique subi, même si le brouillage est susceptible d'en compromettre le fonctionnement.