

XShuidi Smart Sweeping Robot
Product Manual

Thank you for purchasing, wish you have a happy experience.

Contents

1. "Huiba"APP Operation Guide.....	2-3	6. Product Maintenance.....	14-16
2. Safety Instruction.....	4-6	6.1 Clean the Main Body	
2.1 Use Notes		6.2 Clean the Dustbin	
2.2 Safety Precautions		6.3 Clean the Filter	
2.3 About Child Safety		6.4 Clean the Main Brush	
2.4 About Battery		6.5 Clean the Side Brush	
2.5 Usable Scope		6.6 Clean the Front Wheel	
3. Product Formation.....	7-8	6.7 Clean the Left Wheel and Right Wheel	
3.1 Main Body and Accessories		6.8 Clean the Sensors	
3.2 Accessories Introduction		6.9 Clean the Trailing Bar Assembly	
4. Product Installation.....	9	6.10 Others	
4.1 Main Body		7. Common Faults	18
4.2 Charging Station		7.1 Alarm and Prompt Facility	
4.3 Installation of "huiba" APP		7.2 Processing Methods	
5. Product Usage.....	11-13	8. Technical Parameters.....	19
5.1 Main Body		Attachment:	20-26
5.2 Charging Station		"Huiba"APP Operation Guide	
5.3 Charging Methods			

1. “Huiba”App Operation Guide

1.1 Download & Install “Huiba” App

*Scan the QR Code below or search “Huiba ” in App Store or Google Play.

*App can read 10 countries language ,including English,German,French,Spanish, Korean,Russian,Portuguese,Japanese,Hebrew,Italian.



Huiba



IOS



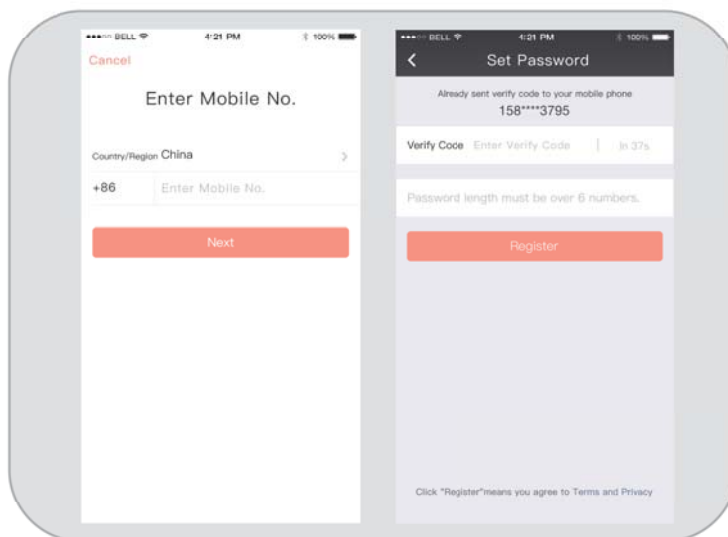
Google Play

1.2 Register

Step 1. Enter mobile phone No..

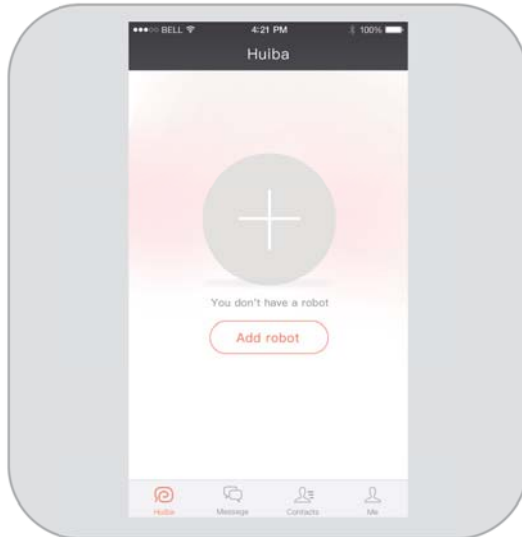
Step 2. Input passwords after receiving verify code.

Step 3. Finish registration.

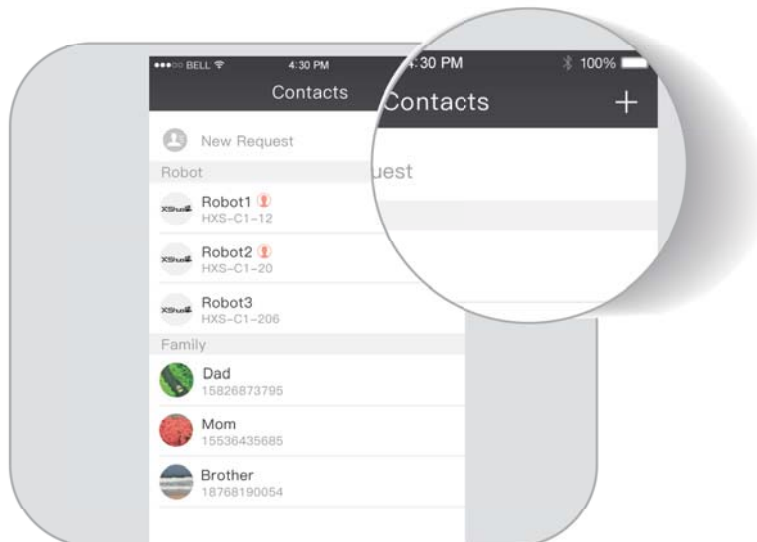


1.3 Add The Robot

1. Enter into App "Huiba", click "+" on home page to get into add robot interface, operating based on guiding steps on the App interface.



2. If you want to add multiple robots, click "+" in the upper right corner of the contacts, operating based on guiding steps on the App interface.



2. Safety Instruction

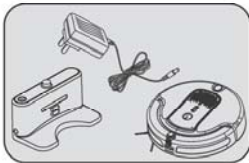
2.1 Use Notes

Please observe the following safety precautions before using the product:

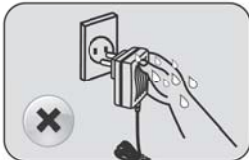
- * Read the User Manual carefully, and use the product according to the instruction.
- * Keep the User Manual carefully for the future reference.
- * If you want to send the product to others, please send it together with the User Manual.
- * Any error operation may damage the product or cause serious personnel injury.

2.2 Safety Precautions

⚠ Caution

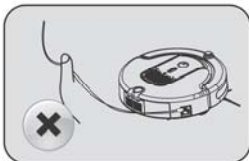


Please use the original adaptor, battery and charging station, otherwise it will damage XSmart and cause fire because of electric shock and high voltage.



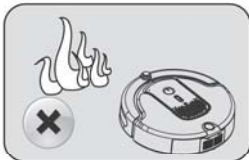
Please do not use the XSmart and contact with the after-service department. If you find that the main body and accessories are damaged, is not allowed to disassemble maintenance or remould the XSmart .

Do not touch the battery socket and XSmart when your hands are wet, otherwise it will cause electric shock.



Do not use the XSmart in the place without guard railing, otherwise it will damage the XSmart and cause personal injury.

Do not bend the power cord overly or place weight on it, otherwise it may cause power cord damage, fire or electric shock.



Do not approach cigarette, lighter, match and other heat objects or combustible materials such as the gasoline to XSmart.

Do not put your clothes or any place of your (hair, finger and so on) into the main brush and wheels, or it will cause personal injury.

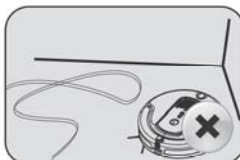
! Attention



This product is only used indoor.



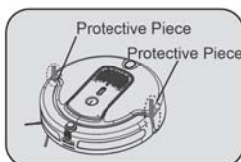
Water, oil or other liquid shall be prevented from damaging the XSmart



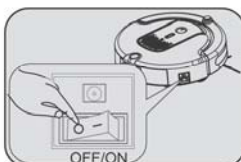
Please clean up the wire in the wire in the floor, or it will hinder the working of the machine.



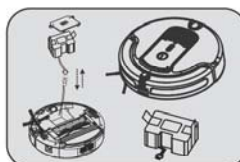
Please remove all the fragile objects.



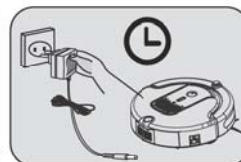
Please take down the two protective pieces before using, thus XSmart can work well.



Please turn off the power switch if you do not use the XSmart, otherwise it will damage the battery.



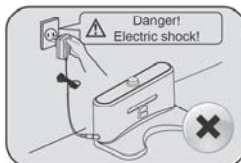
If the machine is not used for a long time, please charge the battery fully, then take it in shade place, keep the bottom of cleaner dry.



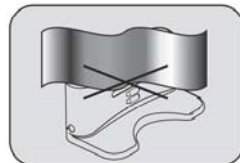
Please charge the battery about 6 hours for first using.



It's better to place charging station against the wall and flat ground.



Please cut off the power supply plug when non-used for a long time.



Do not cover the signal window of the charging station, otherwise XSmart auto-charging will be invalid.



Please wipe the camera with a soft cloth when it is blur.

2.3 About Child Safety



- * The machine should not be used alone by children.
- * Forbid the children playing the packing bag, otherwise it will cause smother.

2.4 About Battery



1. XSmart will only be used with the original battery.
2. Please turn off the power switch before taking out the battery .
3. The battery must be taken out before abandoning it.
4. If the battery is leak, please do not touch the liquid, you should wipe the liquid with dry cloth, and put the battery to recycle bin or maintenance point, do not throw it at random.
5. The battery includes hazardous substance, please put it to recycle site according to original environmental protection regulations.

2.5 Usable Scope

Applicable Scope

The robot is suitable to the following environment



Wooden Floor

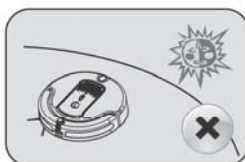


Tile



Carpet

Inapplicable Scope

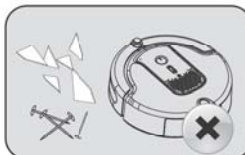


*Not suitable to be used in the extreme hot or cold environment.



*Do not use XSmart in the place without guard railing, otherwise it will damage XSmart and cause personal injury.

*Do not use XSmart in the following environment: wet, inflammable, explosive and easily corrosive.



*Do not let XSmart clean the flaming cigarette butts, matches and so on.

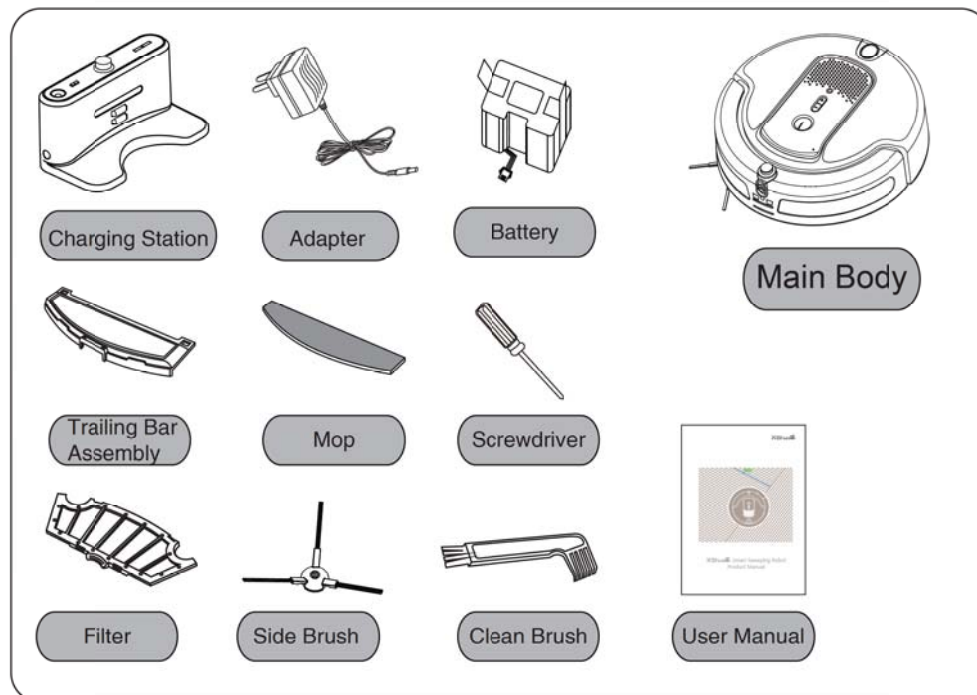
*Do not let XSmart suck the toner from laser printer and copier, otherwise it will cause fire.



DISPOSAL: Do not dispose this product as unsorted municipal waste. Collection of such waste separately for special treatment is necessary. This product must not be disposed together with the domestic waste. This product has to be disposed at an authorized place for recycling of electrical and electronic appliances. By collecting and recycling waste, you help save natural resources, and make sure the product is disposed in an environmental friendly and healthy way.

3. Product Formation

3.1 Main Body and Accessories



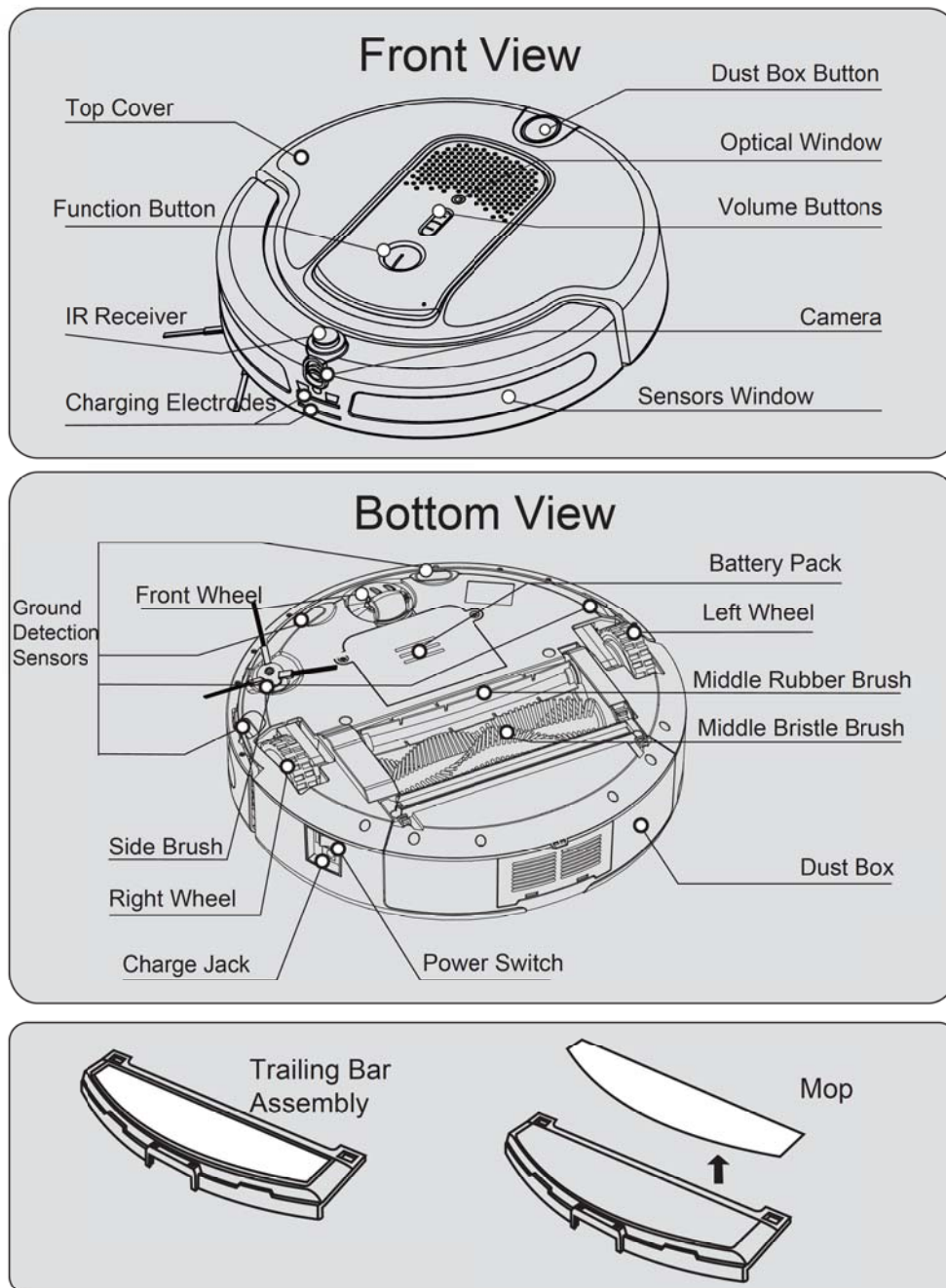
Tips:

- *The remote control is implemented by your smart phone or tablet pc.
- *The main body is equipped with a side brush and a filter, and another side brush and filter are put in the gift box.
- *The Trailing Bar Assembly includes a mop that can be used directly.

This device complies with part 15 of the FCC Rules. Operation is subject to the following two conditions:

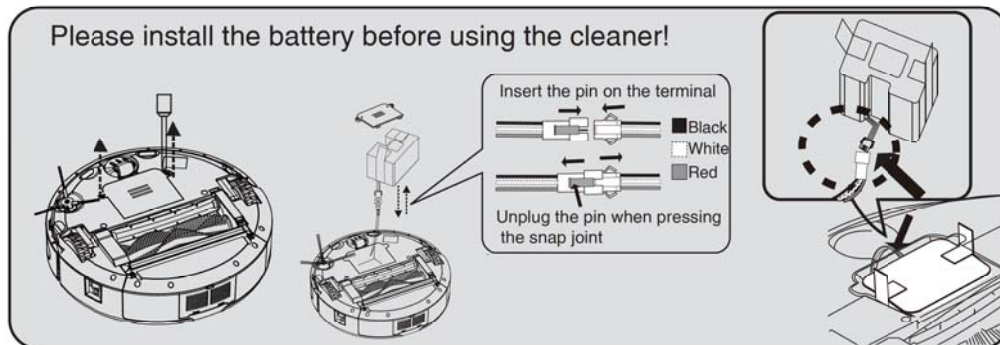
- (1) This device may not cause harmful interference, and**
- (2) this device must accept any interference received, including interference that may cause undesired operation.**

3.2 Accessories Introduction

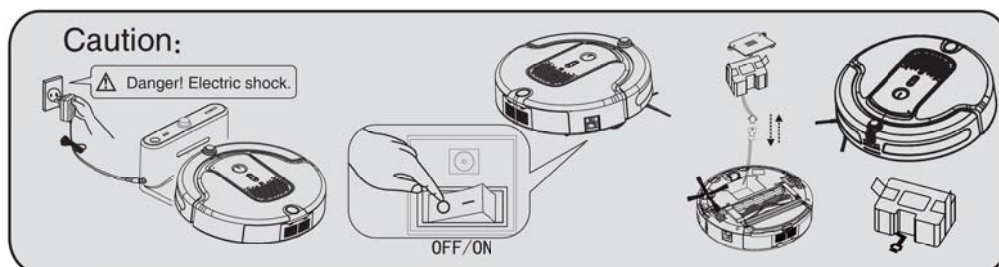


4. Product Installation

4.1 Main Body

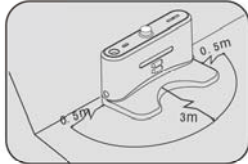


1. Loosen the screw with screwdriver to unfold the battery cover
2. Connection method: take out the connector between the battery and cleaner, lock the two ends together, take care of the relevant color.
Method to disassemble snap joint: Unplug the pin when pressing the snap joint.
3. Firstly, put the wire terminal buckle and wire into the battery pack gap according to the top right image. Then put the battery into battery compartment. Finally, close the battery cover and lock screw.



1. If you do not use the machine, please turn off the power switch, or else it will damage the battery.
2. If the machine is not used for a long time, please charge the battery fully, then take it out and put it in shade place, keep the bottom of cleaner dry.
3. The battery should be charged about 12H, if the machine is not used for a long time or the first time. When the battery is used up for 3-4 times, which will make the battery best efficient.
4. You should use the original battery, or else it will cause damage and accident.

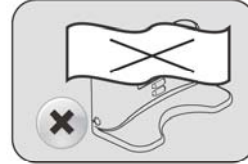
4.2 Charging Station



1. Put charging station on the flat floor against the wall and keep any obstacles away from the charging station in of 3m and 0.5m on the left and right.



2. Connect charging station to power socket.



3. Do not cover the signal window of the docking station, otherwise the function of auto-charging will be invalid.

4.3 Installation of "Huiba" App

This App is just apply to smartphone.

1. The system version requirements for smartphones are as follows.
Android system must be 4.0 or above, IOS system must be 8.0 or above.
2. Two options for App downloading:
A-Search "Huiba" in App store or Google Play.
B-Scan the below QR code.



Huiba



IOS





Google Play

3. For more information, please refer to Chapter 1, "Huiba App Operation Guide".

5.Product Usage

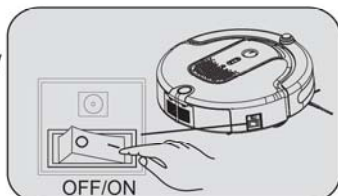
5.1 Main Body

5.1.1 Operation Buttons

Icon	Buttons' Instruction
	<p>Indicator</p> <p>White blinking: Wi-Fi disconnected</p> <p>White breathing: Wi-Fi connecting</p> <p>White keeping on: In the video connection</p> <p>Orange blinking: low power</p> <p>Orange breathing: charging</p> <p>Red blinking: hardware failure</p> <p>Cleaning button:</p> <p>Press this button, XSmart will automatically start cleaning in Standby or Working mode. Press the button again, XSmart will stop cleaning .</p> <p>Recharging button:</p> <p>Press and hold this button after listening "di", XSmart will seek the Charging Station automatically in standby or working mode. Press again, XSmart will stop working.</p> <p>Wi-Fi configuration button:</p> <p>Press this button after listening" di-di-di", XSmart completes Wi-Fi signal emitting with the white light flashing.</p>
	Volume buttons

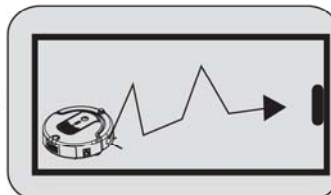
5.1.2 Work Mode:

Standby



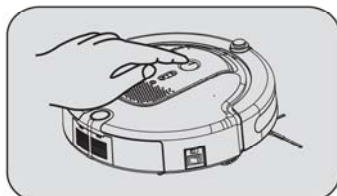
1. Make sure the battery power is enough. Turn on the power switch, the power indicator will extinguish after blinking twice in standby mode.

Auto Charging



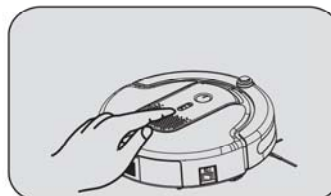
2. XSmart will automatically return to its docking station for self-recharging when the battery is low. Connect the App on smart phone, Robot can be controlled to charging.

Auto Cleaning



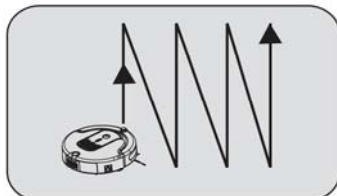
3. Turn on the power switch and press the "⌚" button, XSmart will start cleaning. Press it again, XSmart will stop cleaning.

Volume control



4. Turn on the power switch and press the "+" or "-" to change the volume.

Z Type Cleaning



5. Press the "Clean Mode" button then click, "Z-Mode" to enter the "Z" shape path of cleaning mode.

Reservation Cleaning

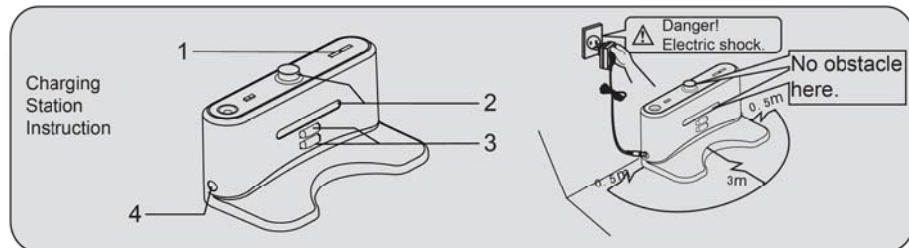


6. Click the Reservation Cleaning to make an appointment with a cleaning at a certain moment in one day.

Tips:

XSmart will emit the sound "di di" when the battery power is low, and will seek the docking station automatically.

5.2 Charging Station



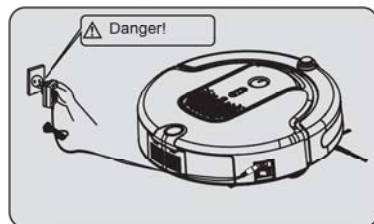
Usage:

1. Install the charging station according to the method from page 10, as shown on the top right photo.

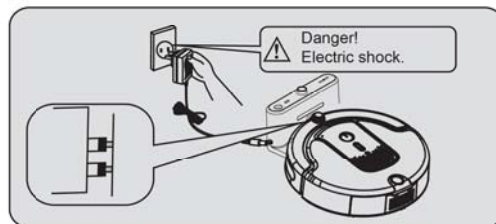
NO	Name	Function
1	Charging indicator	The indicator will twinkle when charging station connects to XSmart.
2	Signal window	Emitting signal is the unique way to conduct to recharge with charging station, so the signal window should be clean regularly to ensure the sensitivity and accuracy.
3	Charging electrodes	The charging electrodes should well contact with electrodes, otherwise the charging will fail .
4	DC socket	Output end jack of adaptor.

5.3 Charging Methods

5.3.1 Manual Charging:

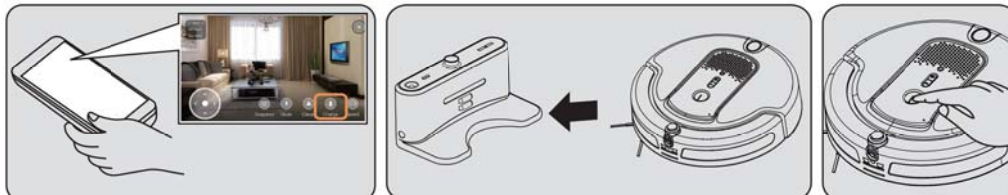


1. Charge the XSmart with an adaptor:
Connect the plug between the XSmart and the adaptor, then insert the socket.



2. Connect the plug between the adaptor and charging station, then put the XSmart behind the charging station, put the charging electrode on the charging station directly, finally connect the power socket .

5.3.2 Auto Charging:



1. Auto-charging by smart phone App: Firstly install the app, then open the controlling interface, click the "charge" button and XSmart will find the charging base in the effective scope.

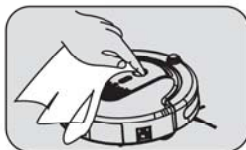
2. Auto charging: When the battery power is low during the cleaning, XSmart will emit the sound "di di", the main brush will also stop working, and XSmart will go back to the charging station automatically.

3. Auto-charging: XSmart will return to charging station for charging after press the function button for a while till "di" sound.

6. Product Maintenance

Tips: Please clean the XSmart regularly according to the usage.

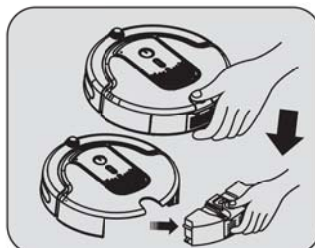
6.1 Clean the Main Body



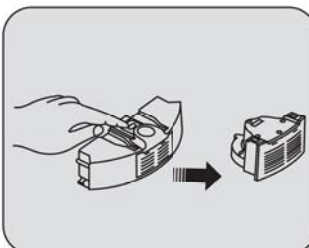
1. Before cleaning the main body, please turn off the power switch and take out the power plug.
2. Please wipe the main body with water and neutral detergent, and make sure the mop is dry, do not put the water into robot.
3. Do not wash robot with oil.
4. Do not make the water into the speaker hole.

6.2 Clean the Dust Box

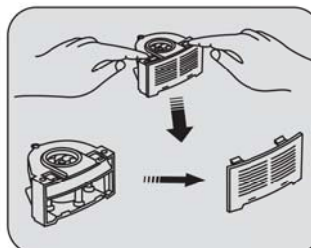
6.2.1 Install the Dust Box



1. Push the button to unlock the dustbin from XSmart.

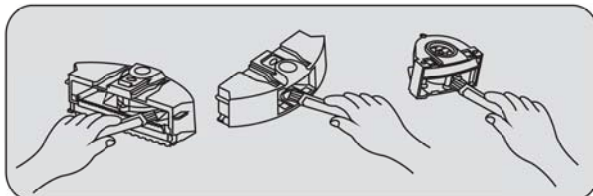


2. The motor fan will be push out from dustbin when you push the red button on dustbin.



3. Remove the window cover of motor fan and clean the motor by dry cloth or brush.

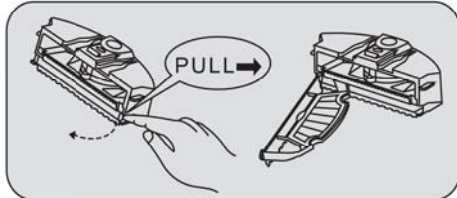
6.2.2 Clean the Dust Box



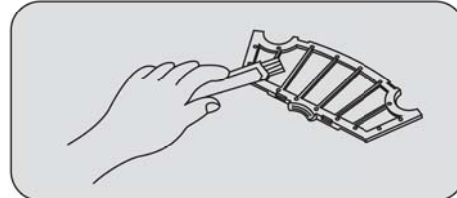
Please clean the dustbin and motor fan assembly inside by brush or dry cloth after pouring out the trash.

(Remark: the fan assembly cannot be cleaned directly with water.)

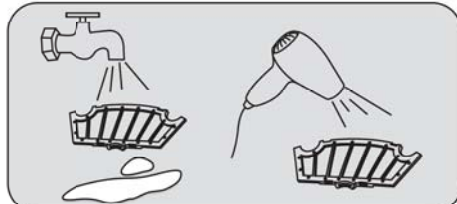
6.3 Clean the Filter



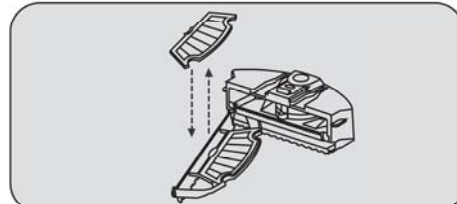
1.First,pull out the dust box,then push the buckle on the double side and open the baffle.



2.Take out the filter,and then clean the dust with the clean brush.



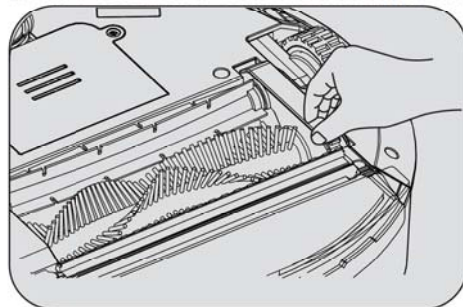
3.If you find there is too much dust on the dust box and filter,you can wash the filter and dust box inside.(Remark:it can reuse after sufficient airing)



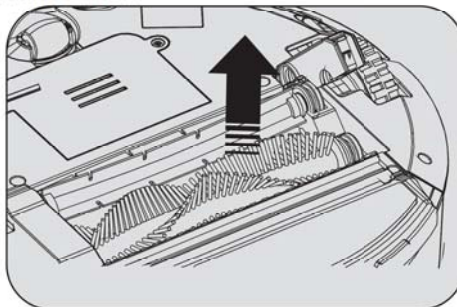
4.Push out the filter out of the buckle from the bottom to top,and then replace the filter into new and clean one.

6.4 Clean the Main Brush

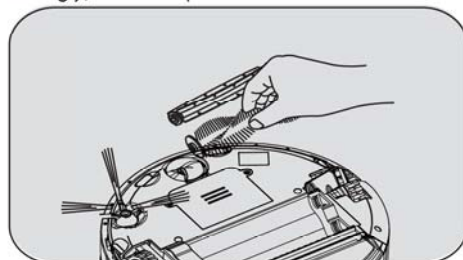
6.4.1 Assemble and Disassemble the Main Brush



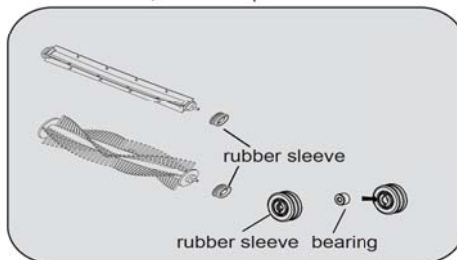
1.As shown on the above photo,push the buckle strongly,and fill it up.



2.Grasp the middle bristle brush or middle rubber brush,and fill it up.



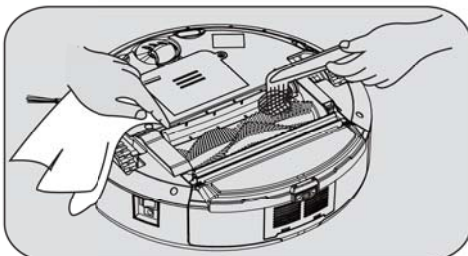
3.Take out the middle bristle brush or middle rubber brush.



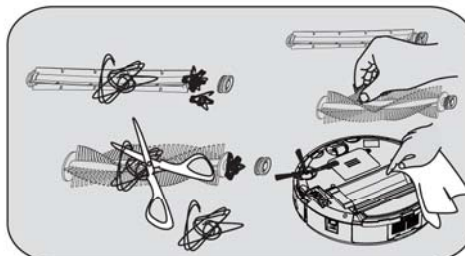
4.Take out the rubber sleeve from the middle bristle brush or middle rubber brush.

Tips:There is a bearing in the rubber sleeve,when you clean the main brush,take care whether the bearing falls off,if it is,please put it in the rubber sleeve.

6.4.2 Clean the Middle Bristle Brush or Middle Rubber Brush

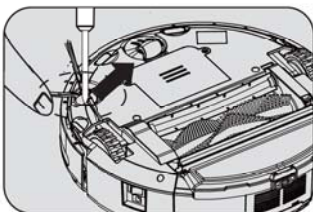


1. Please follow the above pictures illustrate to clean the main brush by clean brush.

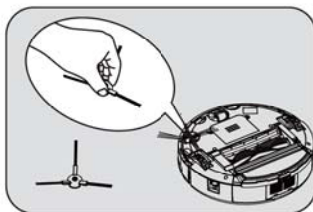


2. Please push the red buckle to open the main brush lock, then take out the rubber brush and bristle brush properly for cleaning.

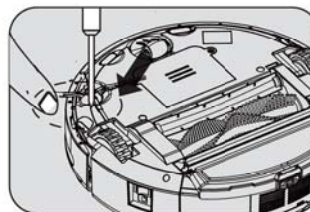
6.5 Clean the Side Brush



1. Take out the screw with a screwdriver on the side brush.

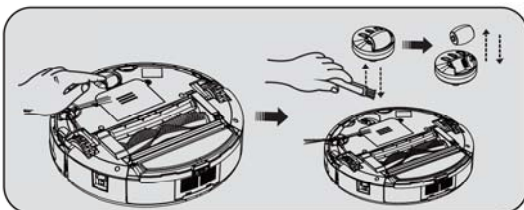


2. Take out the side brush, clean the hair on the side brush, then clean the entanglement in the slot.



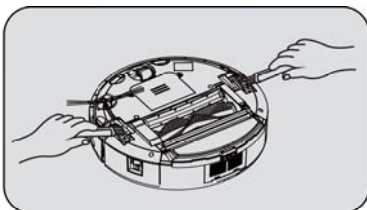
3. Put the side brush in the hole, lock the screw on the side brush.

6.6 Clean the Front Wheel



1. Pull out the front wheel with fingers or a tool. (as picture)
2. Clean the front wheel with the clean brush.
3. Put the front wheel on corresponding place and press it down when installation.
(Tips: Hair and a strip of cloth may twine in the axle of the wheels, please clean it regularly.)

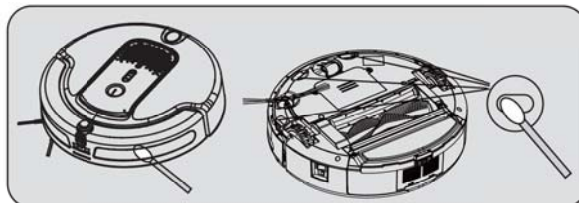
6.7 Clean the Left Wheel and Right Wheel



1. Clean with the clean brush, do not clean with water.
(Tips: Please clean the wheels regularly if hair and a strip of cloth twine in the axle of the wheels.)

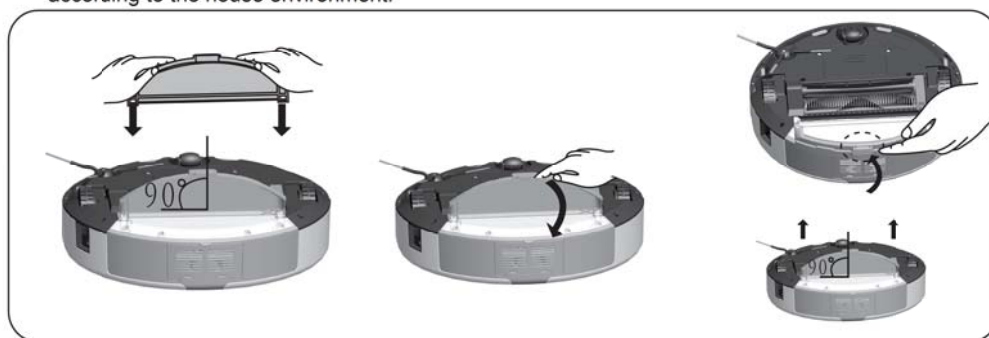
6.8 Clean the Sensors

Please wipe the sensor window by dry cloth or clean it by brush.



6.9 Clean the Trailing Bar Assembly

Tips: The trailing bar assembly is an accessory that is suitable to the flat floor, please use it according to the house environment.



Please assemble and disassemble the trailing bar assembly according to the above photo.

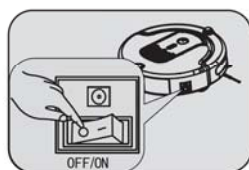
Tips: 1. Please press or take the snap joint out lightly perpendicular to XSmart when you install it, otherwise the snap joint will be bad.
2. Press the middle of the trailing bar assembly, it is successful when you hear the sound "ka".

Clean the Mop

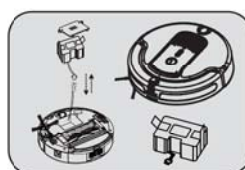
1. Pull the mop from the mop plate, then wash it by water.
2. Put it on the velcro properly and then press it.



6.10 Others



Please turn off the power when it is not in use.



Please take out the battery and store it in shadow and dry places when it is not in use for a long time, also please keep the bottom dry.

7. General Error

7.1 Alarm and Prompt Facility

1. If the robot stops working, it will emit the alarm sound like "di di".
 2. Please check the fault prompt on the smart phone or tablet PC and do the following to clear the abnormality.

Alarm and Prompt	Faults performance	Solution	Remarks
The ground detection sensors are bad	1. Obstacles on the sensors window. 2. Stuck on the stairs.	1. Clean the ground detection sensor. 2. Please take XSmart away from the stair.	Clean the ground detection sensors regularly.
The main brush faults might damage the motor	1. The main brush is blocked. 2. Hair and a strip of cloth twine in the main brush.	Check and clean the main brush.	Clean the main brush regularly.
Low power of battery	1. Can not work 2. It cannot charge automatically.	1. XSmart change the charging mode automatically. 2. Please charge XSmart by hand.	Please keep XSmart charging after working everytime.
Left and right wheels fault	1. The wheels are stuck. 2. Hair and a strip of cloth twine in the wheels.	Please check and clean the entanglement on the wheels.	Clean the wheels regularly.
Dust box	1. No dust box in robot 2. Poor installation of dust box.	1. Install the dust box 2. Check whether the dust box is installed properly.	Please clean the dust-bin regularly.

7.2 General Error

No.	Faults	Solution
1	Walk back all the time	1. It is better to avoid robot working in the strong bright environment. 2. It is better to avoid robot working in the black carpet. 3. Check the ground sensors to see if any dust or dirt covered the sensor window.
2	XSmart does not work	1. Check whether the power switch is on and the power indicator is on. 2. Check whether XSmart is enough power, if not, please charge the XSmart.
3	Unable to auto-recharge	1. Check whether the LED indicator of docking station is on. 2. Check whether there are obstacles between XSmart and recharging station. 3. When the battery power is low, please charge XSmart artificially.
4	Unable to recharge	1. Check if the battery is installed correctly. If yes, please turn on the power switch to see if the indicator is on. 2. If the appearance of the battery is deformed, damaged and so on, please stop using XSmart and call our customer servicer.

8. Technical Parameters

Main Body Parameters		Accessories Parameters	
Working Voltage	DC14.4 V	Adaptor	
Rated Power	26 W	Input Voltage	AC100-240V
Battery	Li-Ion	Output Current	1000mA
Battery Capacity	2200mAh	Docking Station	
Charging Time	About 3-4H	Input Voltage	DC 24V
Cleaning Time	60-120 M	Output Current	1000mA
Video & Audio Time	About 4-6H		
Work Temp Range	-10°C~45°C		
Work Humidity Range	≤ 90%RH		
Dust Box Capacity	350mL		
Voice	≤ 65dB		
Specification	320*320*95mm		

Remarks: Our company reserves the rights for any technology and design change due to products product function improvement, and we reserves the right of final explanation.

Attachment

"Huiba" App Operation Guide

This is the old version of "Huiba" App operation, both page No. 2-3 operation method and page No. 20-25 can help you operate XSmart smoothly.

1.Download & Install “Huiba” App

Scan the QR Code on the right or search “Huiba” in App Store or Google Play.



IOS

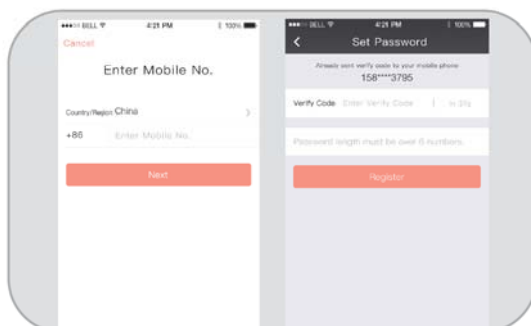
Google Play

2.Register

Step 1. Enter mobile phone No..

Step 2. Input passwords after receiving verify code.

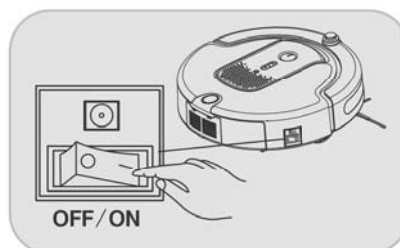
Step 3. Finish registration.



3.Start XSmart

Turn on the power switch, the indicator light on the top cover will turn red to white. XSmart begins booting after 25 seconds with “di” sound, while the indicator light will turn to white flashing.

Please ensure the XSmart is in standby mode so that users can connect it anytime.

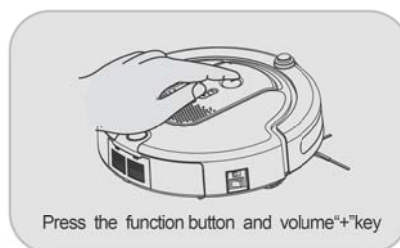


4.Set XSmart Administrator

4.1. XSmart Emits Wi-Fi Signal

Press the function button and volume “+” key until “di”-“di-di” sound and release it.

XSmart completes Wifi signal emitting while the indicator light becomes white flashing.

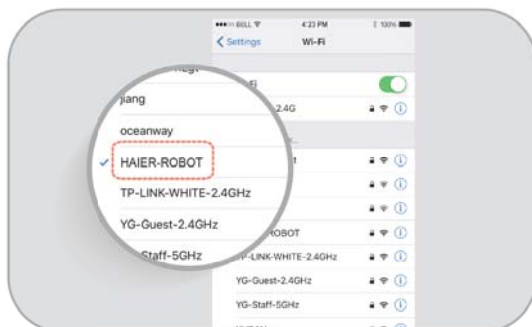


4.2. Smart Phone Connects XSmart

First, please access the smart phone network setting to search “HAIER-ROBOT” Wi-Fi signal;

Second, please connect it accordingly;

Finally, please do the next steps once connecting successfully.

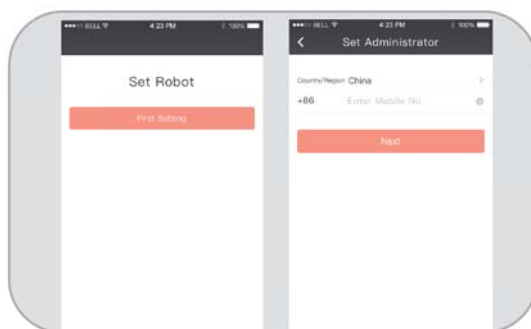


4.3. Set XSmart Administrator

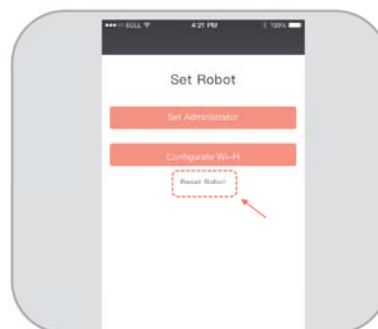
Login “Huiba” App and click “Set Administrator” :

A - Please click “First Setting” if it is the first setting XSmart;

B - Please click “Reset Robot” if you want to reset the administrator, then enter the account No.(i.e. mobile phone No.), this phone number will be the administrator account. (Pls take note that only the administrator can manage “Manage Robot Relation-chain”、accessories and other settings.)



First Setting

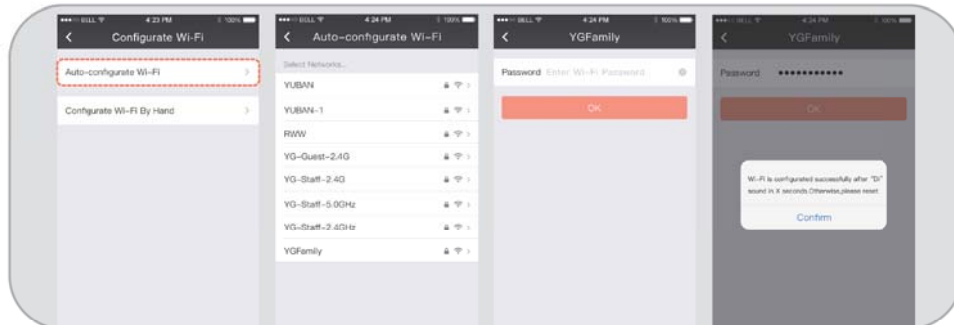


Reset Robot

5.Auto-Configure Wi-Fi

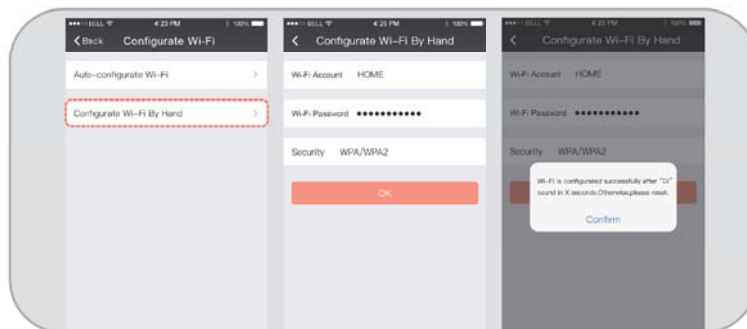
5.1. Auto-configure Wi-Fi

Access smart phone Wi-Fi setting interface to select the right one and enter the password, XSmart will connect Wi-Fi after “di” sound. (P.S. The indicator light becomes white)



5.2. Configure Wi-Fi By Hand

Enter Wi-Fi account and password, XSmart will connect Wi-Fi after “di” sound.
(P.S. The indicator light becomes white)



6.Add XSmart

First setting: there will be a prompt “XSmart has been added successfully” after XSmart Wi-Fi configuring for first setting.

Resetting: there will be a prompt “XSmart has been added successfully” after resetting the administrator.



7.Remote Control XSmart

Login “Huiba” App and click “Robot” icon to enter the main function interface.

XSmart Remote Control Interface:

- Press direction icons to control XSmart back and forth, left and right.
- It's available to adjust the camera angle 45° up or down by sliding screen with finger.
- Press “Clean” to start auto-cleaning.
- Press “Clean Mode” to enter a variety of cleaning mode selection:
 - A - “Z-Mode” refers to the cleaning XSmart according to the “Z” shape path;
 - B - “Spot Mode”, XSmart begins to work by spiral within the limited area;
 - C - “Edge Mode”, XSmart begins to work along the wall.
- Press “Snapshot” to take photos and save to local photo album.
- Press “Charge” to enter Auto-recharging Mode.
- Press “Speed” to convert the speed from fast to slow.
- Press “Mute”, the phone's microphone is shutdown and XSmart will not receive any sound of smart phone.



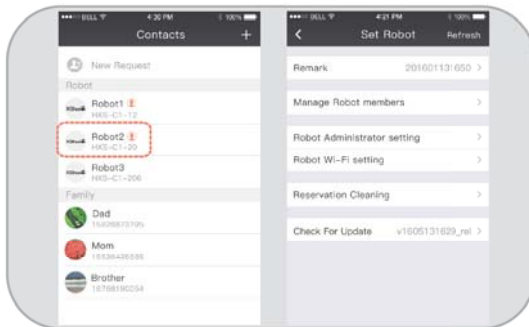
8. Add Family Members and Accessories

“Huiba” Contacts Interface:

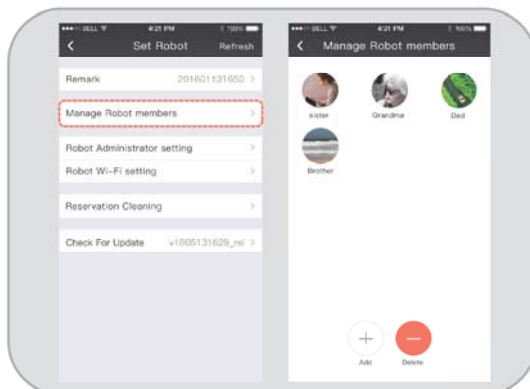
1、Click “+” icon at the top right corner, two options available: Enter Mobile Phone No. & Add From Contacts. You can select any way to add contacts to be your family members. (P.S. the contacts must have downloaded and registered “Huiba” App already).



2、Click XSmart icon and enter into “Details”, click “...” at the top right to enter “Set Robot” interface:

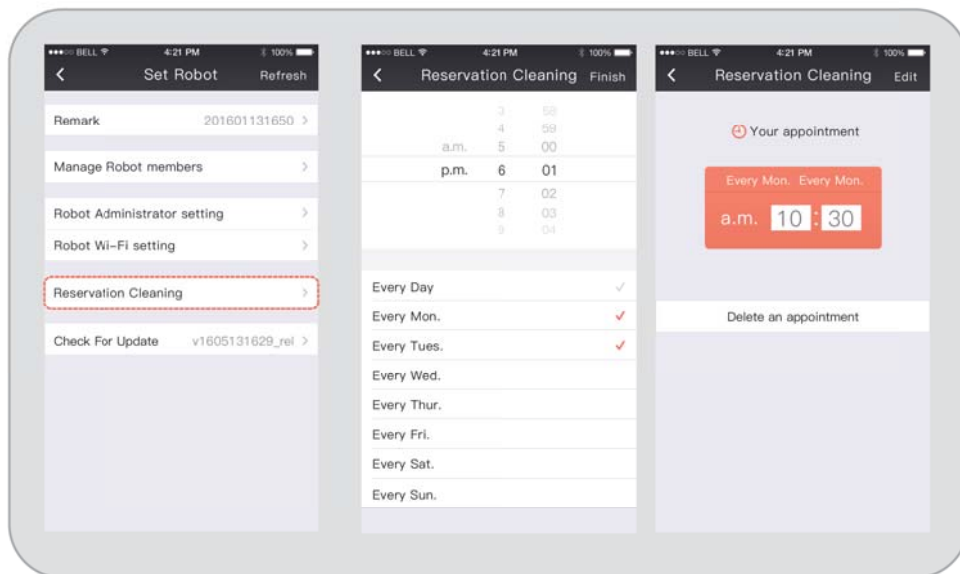


3、Click “Manage Robot members”, then click “+” to invite family members to control XSmart. The new family member will receive a request from XSmart Administrator at the top of the contacts (“New Request”), and then click “Agree”, this member will join into the family circle. The administrator also can delete the members by clicking “-”.



9.Reservation Cleaning

Click the Reservation Cleaning to make an appointment with an cleaning at a certain moment in one day.As the pictures show to select a time , after the scheduled time the cleaning robot will start work.



THE MANUFACTURER IS NOT RESPONSIBLE FOR ANY RADIO OR TV INTERFERENCE CAUSED BY UNAUTHORIZED MODIFICATIONS OR CHANGE TO THIS EQUIPMENT. SUCH MODIFICATIONS OR CHANGE COULD VOID THE USER' S AUTHORITY TO OPERATE THE EQUIPMENT.

This equipment has been tested and found to comply with the limits for a Class B digital device, pursuant to part 15 of the FCC Rules. These limits are designed to provide reasonable protection against harmful interference in a residential installation. This equipment generates, uses and can radiate radio frequency energy and, if not installed and used in accordance with the instructions, may cause harmful interference to radio communications. However, there is no guarantee that interference will not occur in a particular installation. If this equipment does cause harmful interference to radio or television reception, which can be determined by turning the equipment off and on, the user is encouraged to try to correct the interference by one or more of the following measures:

- Reorient or relocate the receiving antenna.
- Increase the separation between the equipment and receiver.
- Connect the equipment into an outlet on a circuit different from that to which the receiver is connected.
- Consult the dealer or an experienced radio/TV technician for help.

To maintain compliance with FCC' s RF exposure guidelines, this equipment should be installed and operated with a minimum distance of 20cm between the radiator and your body.

