

User Manual

OTOSCOPE

General Information

Manual:

This operation manual allows you to work safely with the otoscope camera. Please keep this manual for your information. Liability is void for any damage caused by not following this manual.

Maintenance:

To clean this device, use a damp cloth or mild, water-based cleaner. Fully charge the battery before you leave this device idle for long time to prevent damage to the battery.

Storage and transport:

Improper transport can harm the device. Always transport this device in the provided box in order to prevent damage.

Information on disposal:

Electronic equipment does not belong into domestic waste, but must be disposed in accordance with the applicable statutory provisions.

Description

This new otoscope is a portable, handheld, and practical ear inspection camera. The internal ear can be displayed clearly on your phone, and it will be a much helpful tool to analyze your ear health. The JPG images and AVI videos can be stored in the correspondent app.

— 01 —

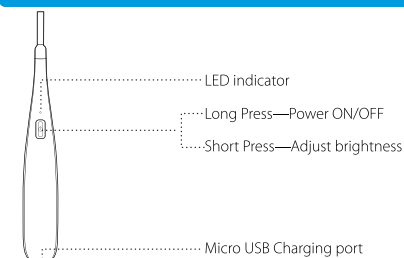
This will be more convenient in your life, and if there is any irritation or horrible symptom in the ear, pls do not hesitate to go to doctor.

Warning: This appliance is not intended for medical use or personal inspection.

Safety

- ⚠ Keep the device dry, clean, free from oil, water, gas or other materials capable of causing corrosion.
- ⚠ This appliance is not intended for use by persons with limited physical, sensory or mental capabilities.
- ⚠ Keep bystanders, children away while operating the tool.
- ⚠ Do not overreach, keep proper footing and balance at all times.

Function



— 02 —

How to Use WiFi Otoscope

Step 1:

Pls go to Apple Store or Google Play Store to download "Depstech" app for iOS or "Depstech-WIFI" for Android.



Step 2:

Long press the crystal plastic button, and LED lights and blue WiFi signal indication light will be solid on.

Step 3:

Go to your phone setting for WiFi list, and connect the WiFi named "WFE300_*****" via entering password "12345678". Pls kindly note that "*" is the symbol here, and there will be a series of random numbers and letters replacing them.

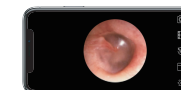


Step 4:

After connection, pls open the pre-installed app "Depstech" or "Depstech-WIFI". If the connection succeeds, the blue LED light will flash, and the image will be on.

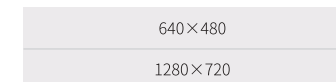
— 03 —

Run the application



Change the resolution of the camera:

1. Enter Settings;
2. Select the resolution;
3. Click on "Set Resolution".



Charge the battery

Warning: The charging time will be almost 90 minutes with the green light on during charge. When the green light is off, the charge will be finished.

— 04 —

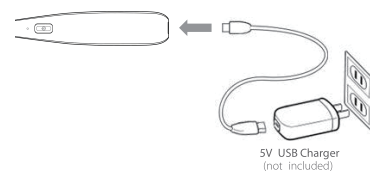
NORTH AMERICA

E-mail: support@idepstech.com(US)
support.ca@idepstech.com(CA)

EUROPE

E-mail: support.uk@idepstech.com(UK)
WFE300 / WFE340 / WFE350

E-mail: support@idepstech.com



Technical Data

Description	Data	Data
Model	WFE300	WFE340/350
Camera Resolution	640*480 30fps 1280*720P 15fps	640*480 30fps 1280*720P 15fps
Camera Lens	100W/720P	100W/720P
Camera Voltage	3.7V	3.7V
Focal Length	15MM	15.3MM
Horizontal View Angle	70°	66°
Camera Power	150MAH*3.3V=0.5W	150MAH*3.3V=0.5W
Machine Power	260MAH*4.2V=1.1W	260MAH*4.2V=1.1W
Battery Capacity	360MAH	360MAH
Working Time	60-75Min	60-75Min
Charging Current	330MAH	330MAH

— 05 —

Safety Information

When operating your equipment:

Warning: This product is not intended for use in patient health care environments unless specifically designated. This product is not designed for use in flammable or explosive environments.

Warning: Do not operate this equipment with any cover(s) (including bezels, panels, housings,) removed.

- Warning:** Do not use this equipment in a wet environment. Protect the equipment from liquid intrusion.
- Do not use damaged equipment, including exposed, frayed, or damaged power cords.
- Disconnect your device and all peripherals from any wall connection during and electrical (lightning) storm or when you will be away for extended periods.
- Do not attempt to service the equipment yourself.
- Contact us if your equipment does not operate normally.

Power Safety

When connecting your equipment to a power source:

- Check the voltage rating before you connect this equipment to an electrical outlet.
- Use only branded AC adapter approved for use with this device.
- Place the AC adapter and the this equipment in a ventilated area, such as desk top or on the floor, when you use it to charge the battery.
- The AC adapter and this equipment may become hot during charge operation.

— 06 —

Troubleshoot

No image or defects, noise in the image

- Check the Wi-Fi settings on your smartphone, make sure it has connected to the device.
- Disconnect and reconnect the camera.
- Close the app and open it again.
- Check the battery level, recharge the battery.

LED lights are dim or blink.

- Battery Low.
- Forgot password.
- Long press the crystal button for 3 seconds to reset after turning on the unit. When blue WiFi indication light quickly flashes three times, the reset will be okay.

FCC Statement

This equipment has been tested and found to comply with the limits for a Class B digital device, pursuant to part 15 of the FCC Rules. These limits are designed to provide reasonable protection against harmful interference in a residential installation. This equipment generates, uses and can radiate radio frequency energy and, if not installed and used in accordance with the instructions, may cause harmful interference to radio communications. However, there is no guarantee that interference will not occur in a particular installation. If this equipment does cause harmful interference to radio or television reception, which can be determined by turning the equipment off and on, the user is encouraged to try to correct the interference by one or more of the following measures:

— 07 —

- Reorient or relocate the receiving antenna.
 - Increase the separation between the equipment and receiver.
 - Connect the equipment into an outlet on a circuit different from that to which the receiver is connected.
 - Consult the dealer or an experienced radio/TV technician for help.
- Caution: Any changes or modifications to this device not explicitly approved by manufacturer could void your authority to operate this equipment. This device complies with part 15 of the FCC Rules. Operation is subject to the following two conditions: (1) This device may not cause harmful interference, and (2) this device must accept any interference received, including interference that may cause undesired operation.
- RF Exposure Information
The device has been evaluated to meet general RF exposure requirement. The device can be used in portable exposure condition without restriction.

— 08 —