

Antenna Description

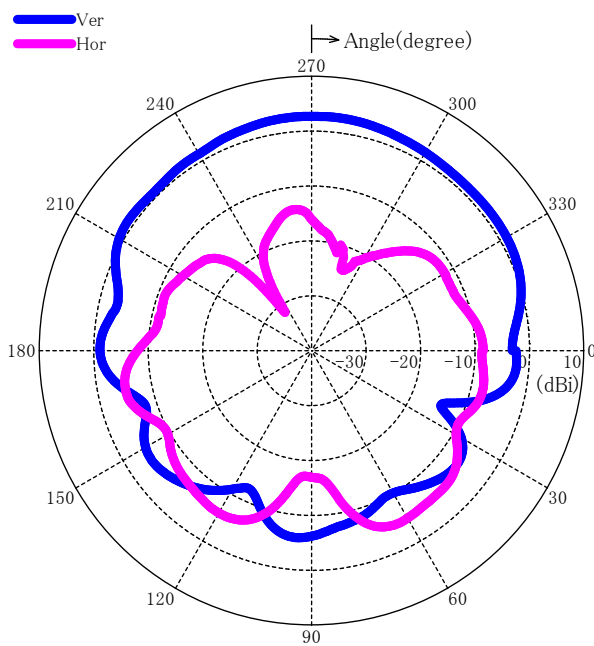
Model : JO-1MDW V2

- The antenna is permanently integrated in the printed circuit board of XC2176 which is incorporated in JO-1MDW V2.

ANT-A

Antenna type	Dipole antenna
Band Width	2400 - 2484 MHz
Antenna Gain	2.7dBi

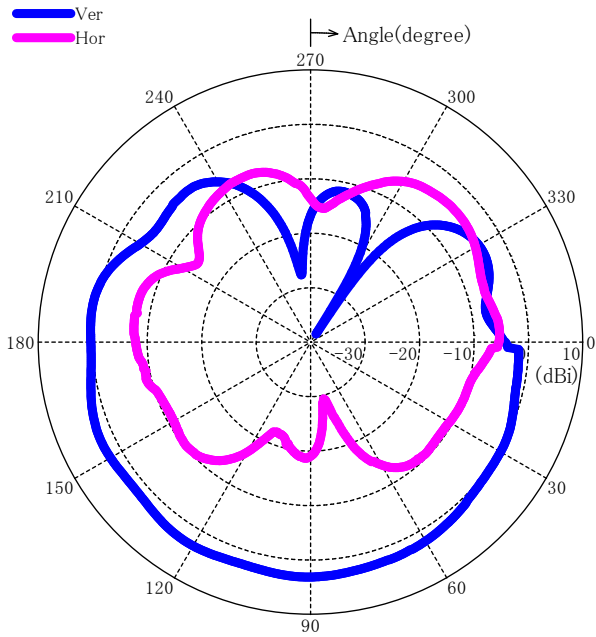
Radiation Pattern



ANT-B

Antenna type	Dipole antenna
BandWidth	2400 - 2484 MHz
Antenna Gain	3.2dBi

Radiation Pattern



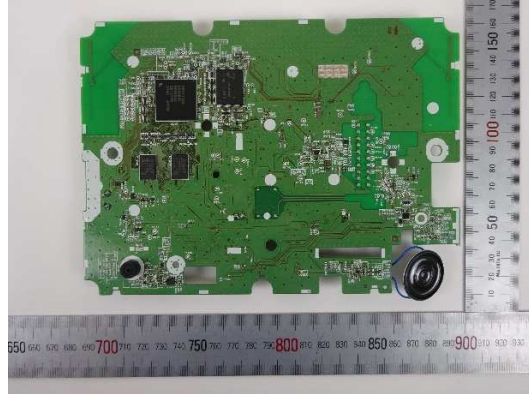
[Appearance of JO-1MDW V2]



[Appearance of XC2176]

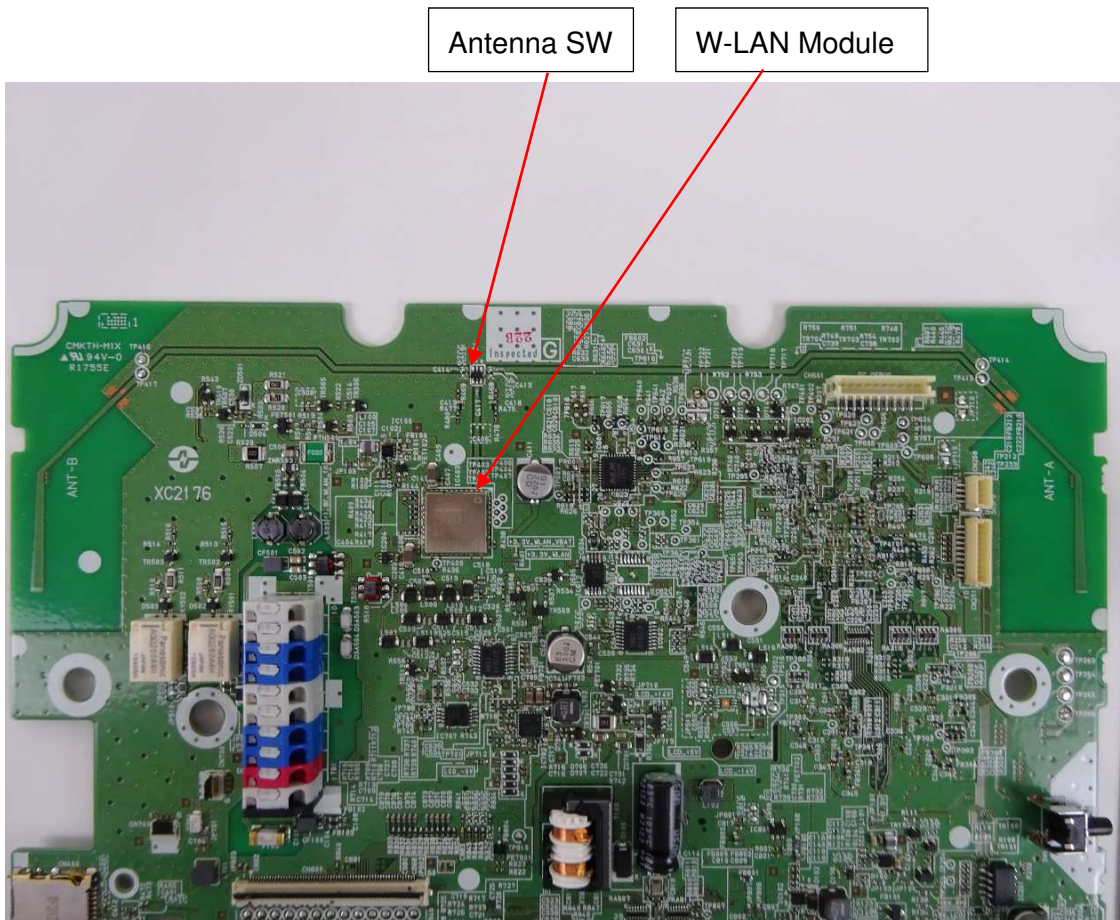


(Side A)

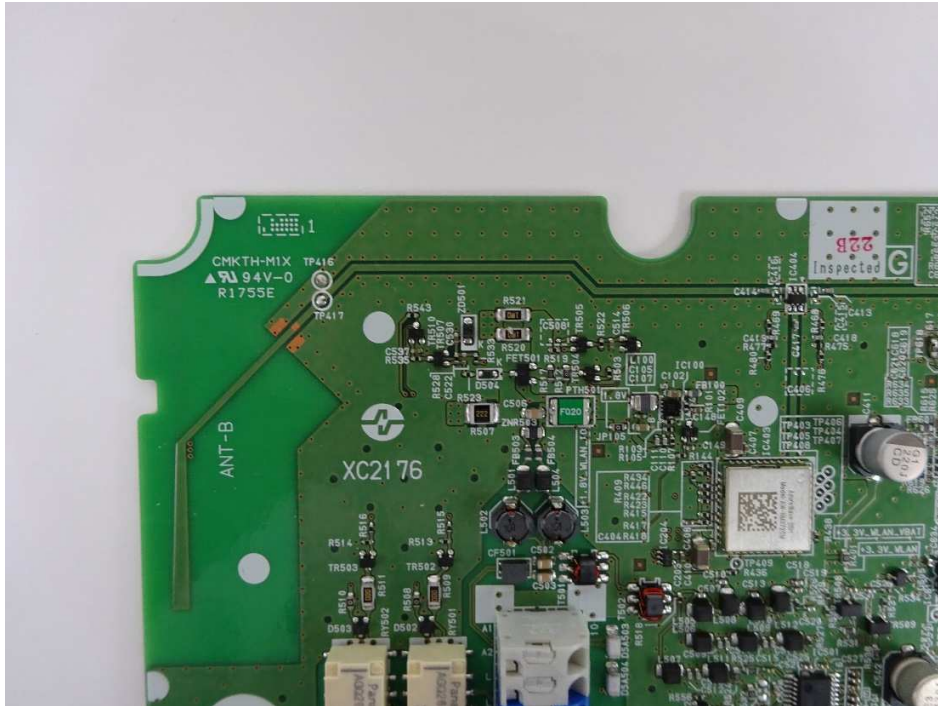


(Side B)

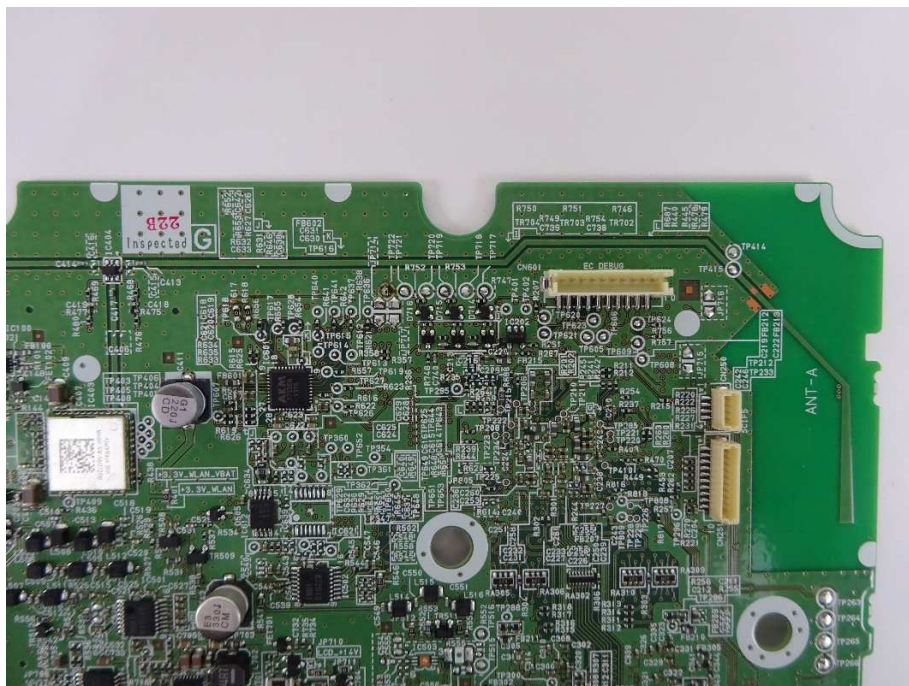
Enlarged picture on side A around antenna



Enlarged picture on side A around antenna



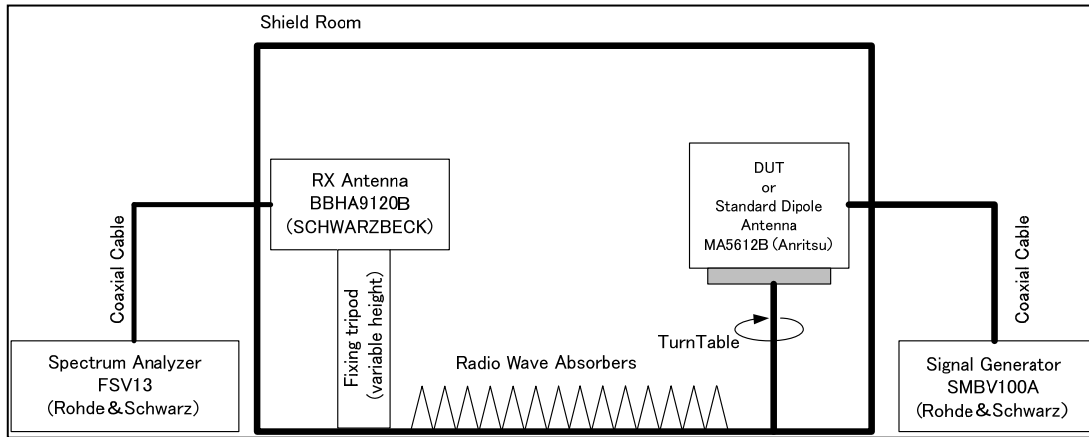
(ANT-B)



(ANT-A)

- ANT-A and B are switched by antenna SW, and either one is connected to the W-LAN module.

Measurement system



Measuring equipment

Item	Manufacturer	Model number
Signal Generator	Rohde & Schwarz	SMBV100A
Spectrum Analyzer	Rohde & Schwarz	FSV13
RX Antenna	SCHWARZBECK	BBHA9120B
TX Antenna (Standard Dipole Antenna)	Anritsu	MA5612B4

Setup

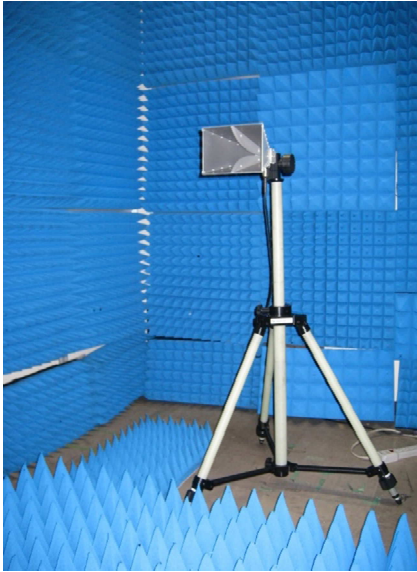
Tx Antenna (DUT)



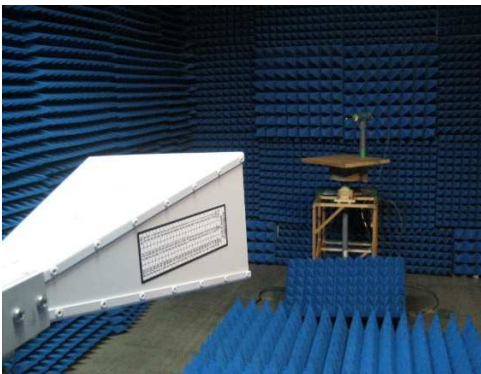
Tx Antenna (Standard Dipole Antenna)



Rx Antenna (Standard Dipole Antenna)



Propagation Area



Spectrum Analyzer & Turn Table controller



Signal Generator

