

Antenna Description

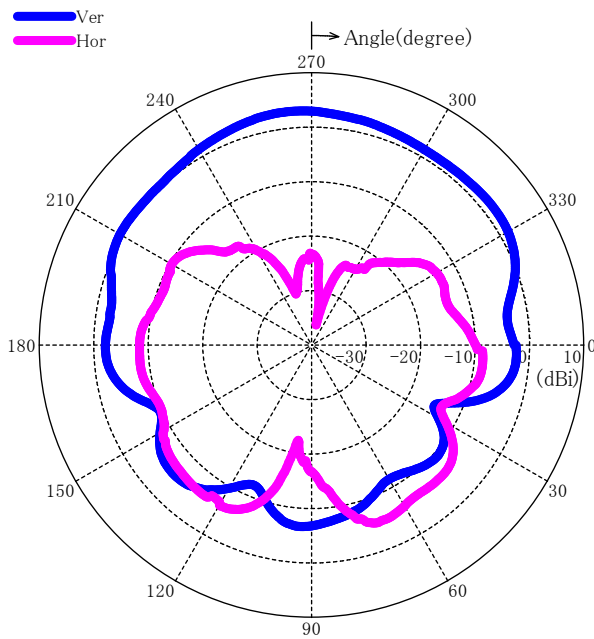
Model : GT-1C7W(-L) V2

- The antenna is permanently integrated in the printed circuit board of XC2177 which is incorporated in GT-1C7W(-L) V2.

ANT-A

Antenna type	Dipole antenna
Band Width	2400 - 2484 MHz
Antenna Gain	3.1dBi

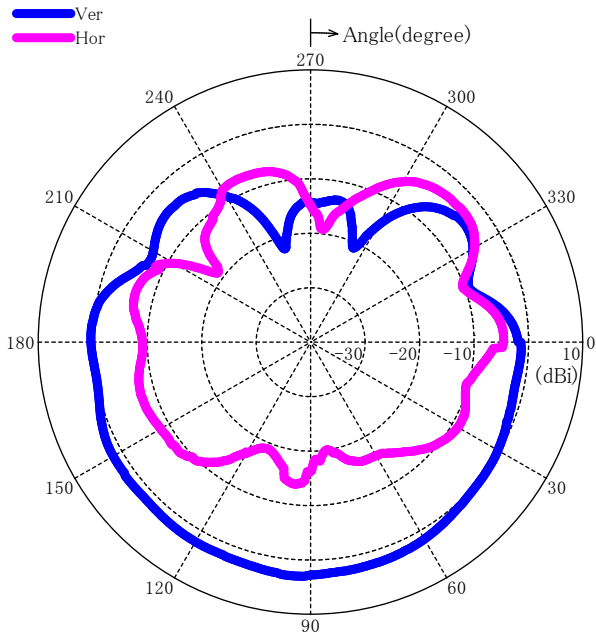
Radiation Pattern



ANT-B

Antenna type	Dipole antenna
Band Width	2400 - 2484 MHz
Antenna Gain	3.0dBi

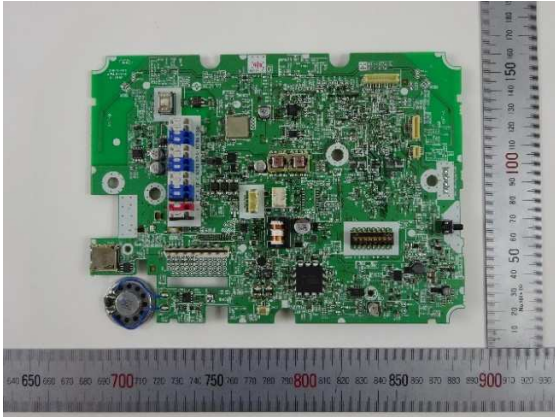
Radiation Pattern



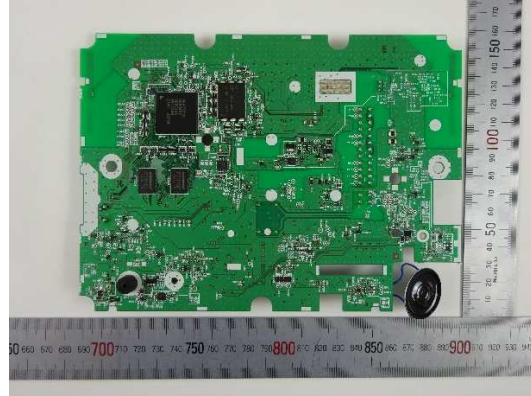
[Appearance of GT-1C7W(-L) V2]



[Appearance of XC2177]

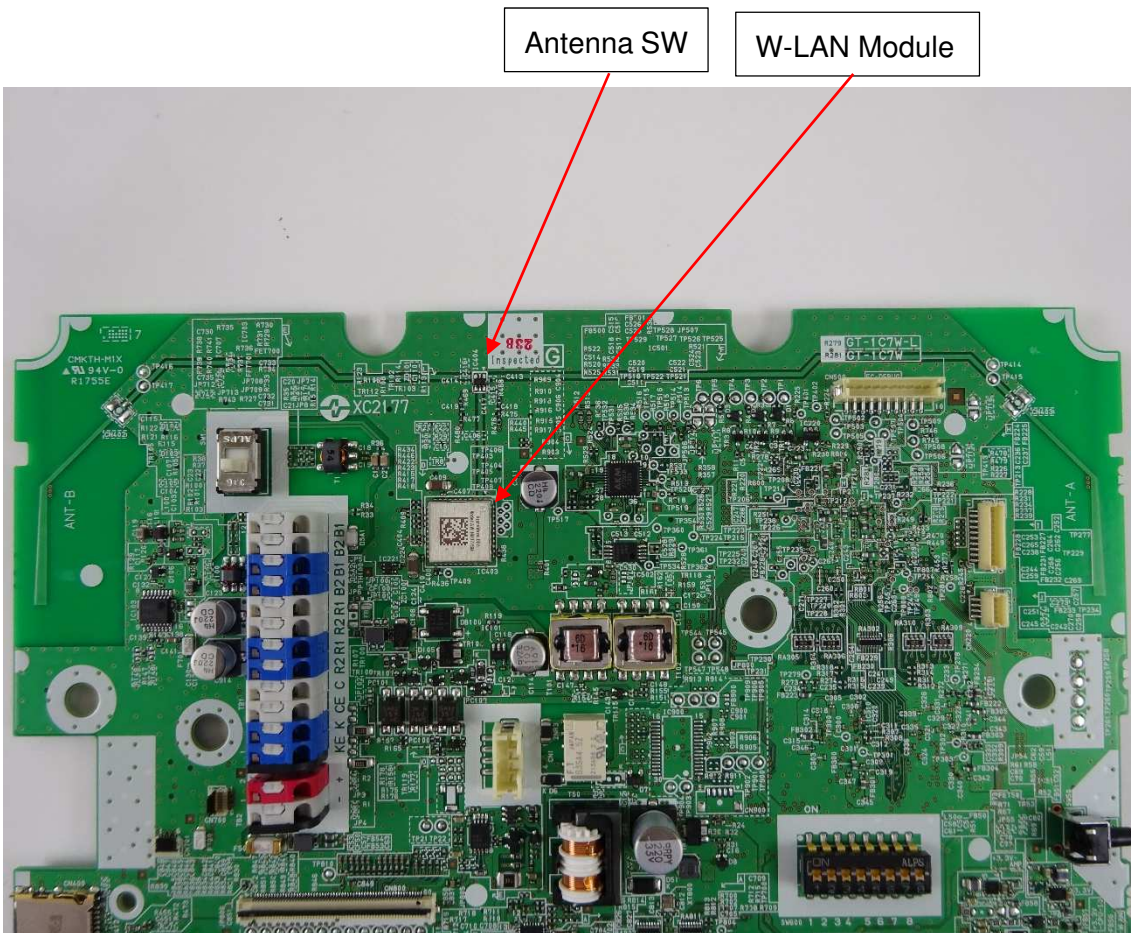


(Side A)

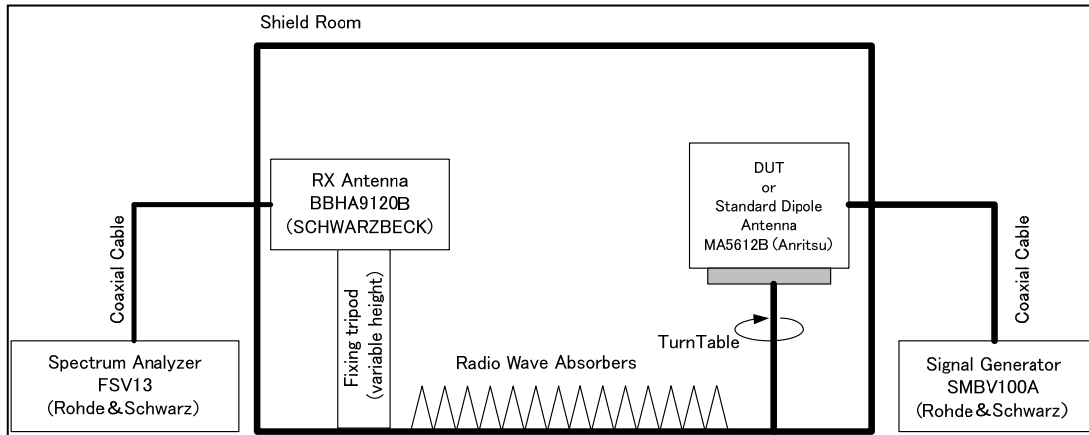


(Side B)

Enlarged picture on side A around antenna



Measurement system



Measuring equipment

Item	Manufacturer	Model number
Signal Generator	Rohde & Schwarz	SMBV100A
Spectrum Analyzer	Rohde & Schwarz	FSV13
RX Antenna	SCHWARZBECK	BBHA9120B
TX Antenna (Standard Dipole Antenna)	Anritsu	MA5612B4

Setup

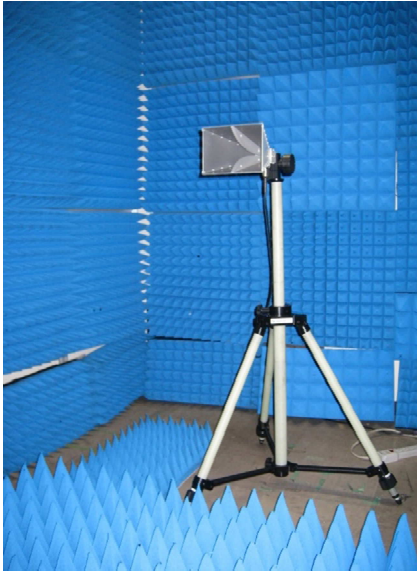
Tx Antenna (DUT)



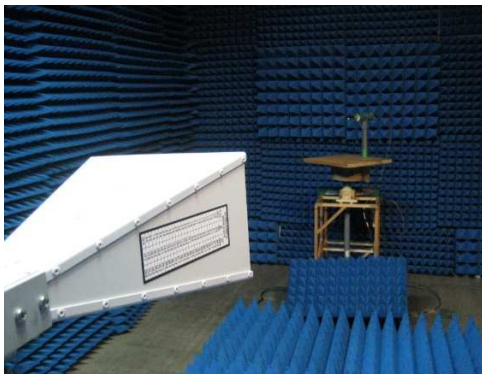
Tx Antenna (Standard Dipole Antenna)



Rx Antenna (Standard Dipole Antenna)



Propagation Area



Spectrum Analyzer & Turn Table controller



Signal Generator

