

Portable Wireless Speaker



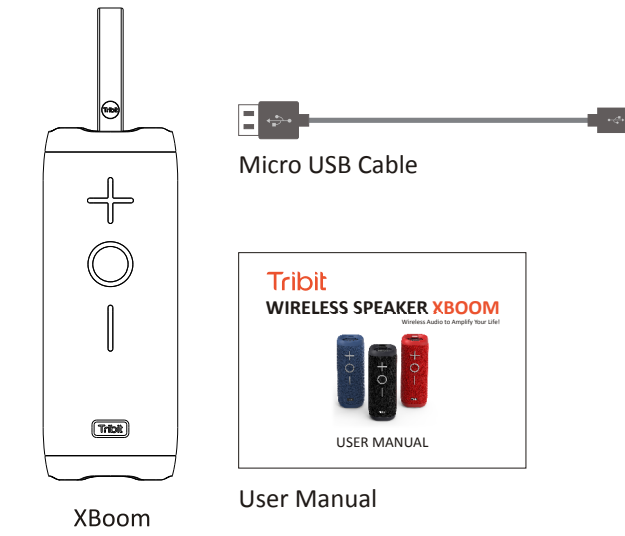
Safety Precautions

- Avoid dropping the speaker on the floor.
- Do not try to disassemble or repair the speaker unless you are a technician.
- Do not submerge the speaker in water.
- Never expose the speaker to extreme high or low temperatures.
- Stop use immediately if thunderstorm happens.
- Do not clean its surface with any corrosive cleanser or other chemical solutions.

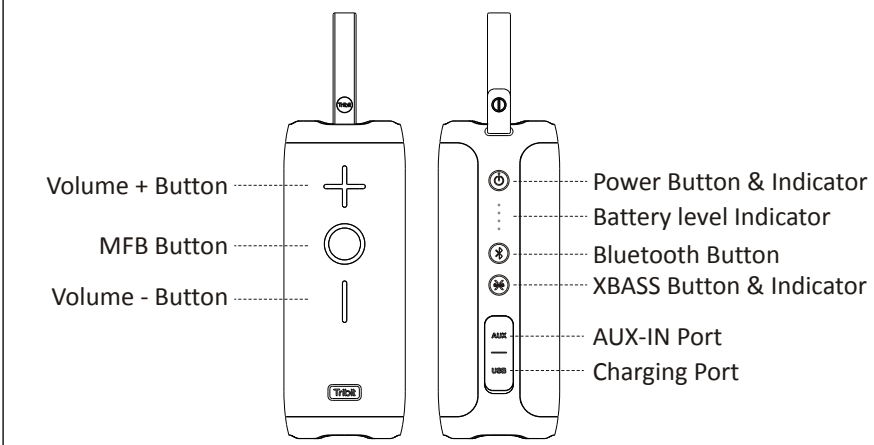
Specifications

- Bluetooth version: V4.2
- Bluetooth profile: A2DP, AVRCP, HFP, HSP
- Driver: 2 x Φ45mm, 2 x Passive radiator
- Output power: 2 x 12W
- Signal-to-noise ratio ≥ 80dB
- Frequency response: 70-20KHz
- Battery: 3.7V/5200mAh
- Music play time: Up to 20 hours (varies by volume level and music files)
- Charging time: 4 hours @ 5V/2A
- Dimensions (H x W x D): 68 x 180 x 68 mm /2.68 x 7.09 x 2.68 in
- Weight: 545g /19.2oz

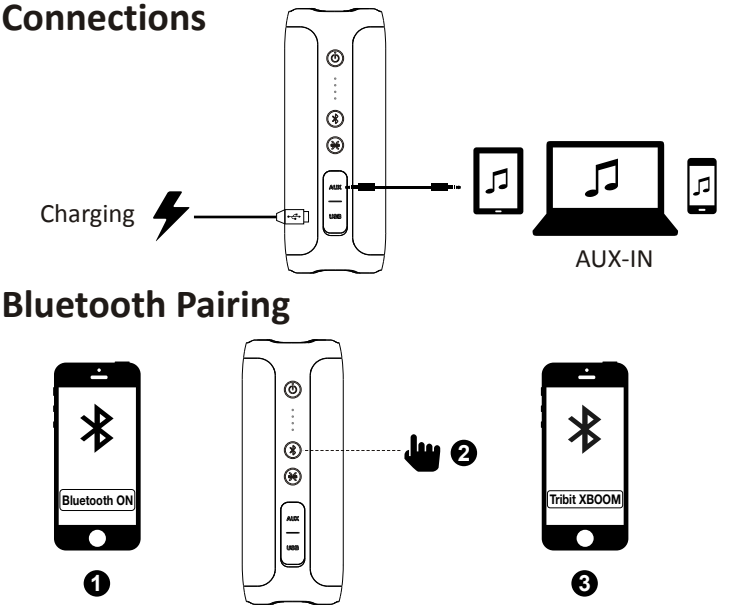
What's in the Box



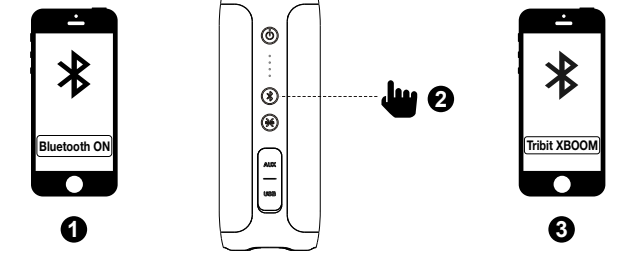
Overview Buttons & Indicators



Connections

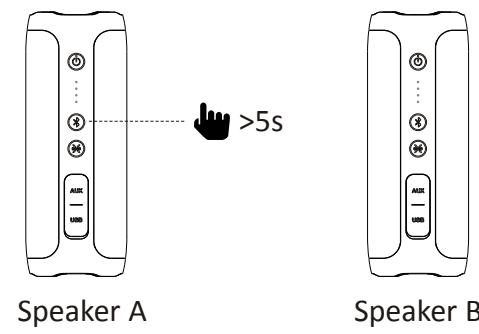


Bluetooth Pairing



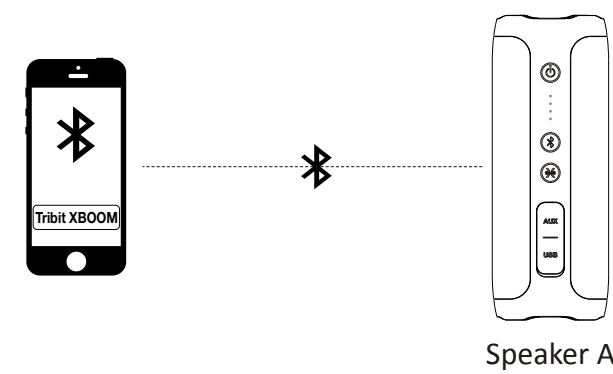
Wireless Daisy Chain with Two XBooms

Step 1: Connect the Speaker A and B



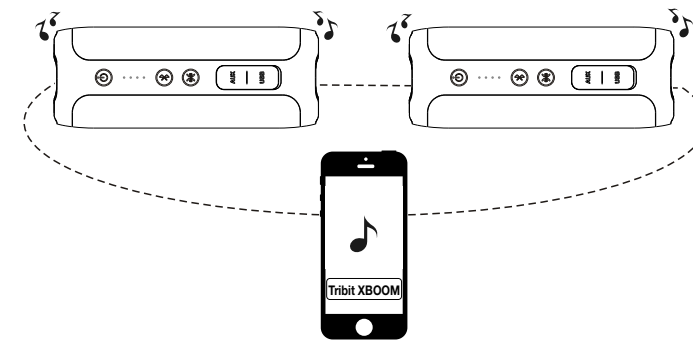
- Keep Speaker A and B power on
- Press the Bluetooth button on Speaker A at least 5s till the tone comes up
- Wait for the Speaker A and B connecting success with tone

Step2: Pair/Connect the Speaker A



Note: Same as normal Bluetooth pairing

Step3: Enjoy music with two XBooms



Buttons

Function	Button	Operation
Power ON/OFF	Power Button	Press the button to turn on/off the speaker

Function	Button	Operation
Pair a Bluetooth Device	Bluetooth Button	Press the button to manually enter pairing mode
Volume Up	Volume +	Press the button to increase the volume level
Volume Down	Volume -	Press the button to decrease the volume level
Play/pause	MFB	Press once the button
Next track	MFB	Double press the button
Previous track	MFB	Press the button for 3 times
answer/end the incoming call	MFB	Press once the button
Reject an incoming call	MFB	Press and hold the button for 2s
Voice dial function	MFB	Press and hold the button for 2s to activate (your device must support this function)
XBASS	XBASS	Press the button to switch Bass and normal mode

Indicators

Indicator	Status	Reconnection mode
Power indicator	Blue indicator flashes slowly	Bluetooth pairing mode
	Blue indicator flashes quickly	Connected
XBASS indicator	White indicator lights up	Bass mode is activated
Battery indicator	Four white indicators light up	Remaining battery power: 71% ~ 100%
	Three white indicators light up	Remaining battery power: 51% ~ 70%
	Two white indicators light up	Remaining battery power: 26% ~ 50%
	One white indicator lights up	Remaining battery power: 10% ~ 25%
	A red indicator lights up	Low battery power (<10%), Please recharge the speaker.

Reset

If this speaker has any problem, you can try to press and hold Volume + and Volume - buttons simultaneously for 5s to reset this speaker and remove the old pairing in your Bluetooth device, and then pair again.

Customer Service

- 18-month limited warranty
- For FAQs and more information, please visit: Email: support@tribitaudio.com www.tribitaudio.com

FCC Statement

Changes or modifications not expressly approved by the party responsible for compliance could void the user's authority to operate the equipment. This equipment has been tested and found to comply with the limits for a Class B digital device, pursuant to Part 15 of the FCC Rules. These limits are designed to provide reasonable protection against harmful interference in a residential installation. This equipment generates uses and can radiate radio frequency energy and, if not installed and used in accordance with the instructions, may cause harmful interference to radio communications. However, there is no guarantee that interference will not occur in a particular installation. If this equipment does cause harmful interference to radio or television reception, which can be determined by turning the equipment off and on, the user is encouraged to

try to correct the interference by one or more of the following measures:

- Reorient or relocate the receiving antenna.
- Increase the separation between the equipment and receiver.
- Connect the equipment into an outlet on a circuit different from that to which the receiver is connected.
- Consult the dealer or an experienced radio/TV technician for help.

This device complies with part 15 of the FCC rules. Operation is subject to the following two conditions:

- (1) This device may not cause harmful interference.
- (2) This device must accept any interference received, including interference that may cause undesired operation.