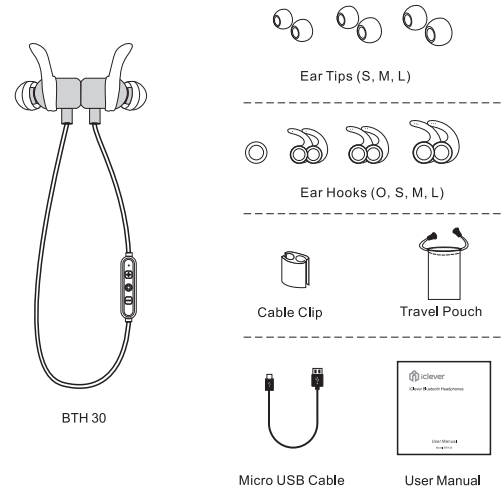




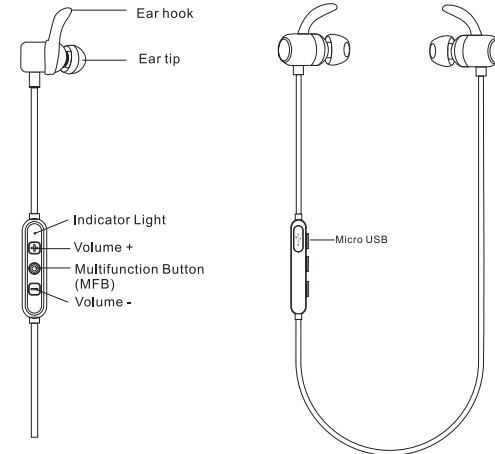
Inear Bluetooth Headset IC-BTH30

User Manual

What's in the box

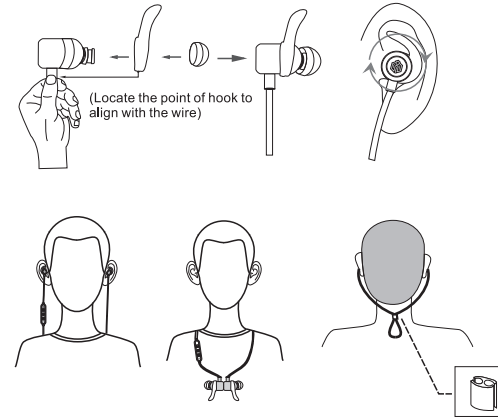


Overview-buttons & indicators



Installing & Wearing

Specially-designed earbuds for exceptional comfort, fit, and sound.



Power on/off

Function	Operation	Sound
Power on	Press and hold MFB button for 2 seconds until the indicator flashes blue for 1 second	beep sound prompt
Power off	Press and hold MFB button for 4 seconds until the red indicator flashes 1 second. The headphones will power off .	beep sound prompt

Note:

- The indicator will flash blue twice every 5 seconds, when the headphones are in standby mode (not paired with devices).
- The headphones will automatically power off if unpaired for more than 5 minutes.

Pairing Your Headphones

- 1) Keep your headphones turned off and within 1 meter of your phone.
- 2) Press and hold MFB button for 5 seconds until the indicator lights flash red and blue, and heard the beep sound prompting will indicate pairing mode has been activated.
- 3) Activate the Bluetooth function on your Bluetooth-enabled device.
- 4) Select the profile name iClever BTH30 from the list of Bluetooth devices found by your device and connect (input pairing code 0000 if needs).
- 5) Heard the beep sound prompting and indicator lights flash blue will indicate that pairing has been successful and the headphones are now connected.

Notes:

- The headphones will automatically connect with the device they were paired with the last time when you turned it on.
- If the pairing is unsuccessful, turn off the headphones and repeat the steps above to try again.
- The indicator light will flash blue once every 7 seconds when the headphones are paired with a device or playing music.

背面内容

Playback

Function	Status of headphones	Operation
Volume up	Playing music	Press V+ button
Volume down	Playing music	Press V- button
Last track	Playing music	Press and hold V+ button for 2 seconds
Next track	Playing music	Press and hold V- button for 2 seconds
Play	Music paused	Press MFB button
Pause	Playing music	Press MFB button

Hands Free Calling

Function	Status of headphones	Operation
Answer call	Incoming call	Press MFB button once
End call	During a call	Press MFB button once
Reject call	Incoming call	Press and hold MFB button for 2 seconds
Redial last phone number	Standby mode (already paired)	Double press MFB button
Voice dialing	Standby mode (already paired)	Press MFB and V+ button simultaneously (your phone must support this function)
Answer and transferring two calls	During a call	<ul style="list-style-type: none"> • Press and hold MFB button for 2 seconds to answer and end a call • Press MFB button to transferring calls
Call transferring between headphones and phone	During a call	Double press MFB button
Volume up	During a call	PressV+ button
Volume down	During a call	Press V- button

Notes:

- When dialing a call, the indicator will flash blue twice every 3s.
- When receiving an incoming call, the indicator will quick flash blue
- When in a call, the indicator will flash blue once every 3s

Charging the headphones

When battery is low, the indicator will flash red and beep sound prompt every 60s . Charge the Bluetooth headphones as required.

- 1) Connect micro cable to the micro USB-port on the headphone control tab, and a compatible USB dock or adapter.
- 2) The indicator light will glow red to indicate charging.
- 3) When the headphones are fully charged, the indicator light will change from red to blue.

Note:

- The iClever Bluetooth Headphones require a charging input voltage of 5V, higher input voltage or the use of quick charge adapters with higher voltage output may damage your headphones.
- The headphones must be fully charged prior to first-time use.

When connected to an IOS device, the remaining battery of the headphones will be displayed on the IOS device.

Reset

In standby mode, press the V+ button and V- button simultaneously for 5 seconds to reset to default settings. The indicator will flash blue 1s and then enter pairing mode will flash red and blue lights.

FAQs and Solutions

1. I can't turn on my Headphone.

Ensure the Headphone are fully charged before use, the device will not turn on if battery is very low.

2. I can't find the Headphone on my device.

- Check that the Headphone are in pairing mode and the LED indicator is flashing blue and red.

- Make sure your Bluetooth device is close to the Headphone within 3 feet.
- Turn off the Headphone and the Bluetooth device, then turn on the Headphone and then restart Bluetooth device. Then retry the pairing method.
- Reset your Headphone and try again.

3. I can find the Headphone on the Bluetooth device list but can't successfully connect them.

- Disconnect your Bluetooth device from any previously connected devices. Restart the Bluetooth device and retry connecting the Headphone.
- Remove the Headphone from Bluetooth device list and pairing again.
- Reset your Headphone and try again.

4. After pairing, there is no sound in Headphone when playing music or answering call.

- Make sure the Headphone have been successfully paired with your device.
- Make sure the Bluetooth device is playing music/ audio.
- Make sure the volume is not too low or mute on both your Headphone and the Bluetooth device.
- Reset your Headphone and try again.
- Some phones do not have the full stereo music function, check by connecting to another cellphone to test the Headphone.

5. After pairing, the sound is not very clear/ the caller cannot hear my voice clearly and cuts out intermittently.

- Please adjust the volume on your Bluetooth device and Headphone.
- Units are out of range (within 10meters). Bring units closer together.
- Make sure there is no interference source (electrical or magnetic) nearby.
- Recharge your headphone, the power may be too low.

6. The Bluetooth Device ask for a password/ pin while pairing

Most Bluetooth devices don't require a password / pin during pairing, but enter "0000" (four zeros) if asked

Specifications

Bluetooth version	Bluetooth V4.1
Bluetooth profile	HFP, HSP, A2DP, AVRCP
Input	DC 5V / 0.5A
Charging time	about 2h
Working time	10h
Standby time	400h
Weight	14g

FCC Statement

Changes or modifications not expressly approved by the party responsible for compliance could void the user's authority to operate the equipment. This equipment has been tested and found to comply with the limits for a Class B digital device, pursuant to Part 15 of the FCC Rules. These limits are designed to provide reasonable protection against harmful interference in a residential installation. This equipment generates uses and can radiate radio frequency energy and, if not installed and used in accordance with the instructions, may cause harmful interference to radio communications. However, there is no guarantee that interference will not occur in a particular installation. If this equipment does cause harmful interference to radio or television reception, which can be determined by turning the equipment off and on, the user is encouraged to try to correct the interference by one or more of the following measures:

- Reorient or relocate the receiving antenna.
- Increase the separation between the equipment and receiver.
- Connect the equipment into an outlet on a circuit different from that to which the receiver is connected.
- Consult the dealer or an experienced radio/TV technician for help

This device complies with part 15 of the FCC rules. Operation is subject to the following two conditions (1) this device may not cause harmful interference, and (2) this device must accept any interference received, including interference that may cause undesired operation.