

## The Instruction

1. Steps (Before we start, please download Bri-Home from the APP store/Google play or by scan the below QR code)



- (1) Install the smart LED lamp
- (2) Connect the power
- (3) Turn on and off the LED lamp repeatedly until the LED lamp blinks, normally after turning on and off for 3 or 4 times, the LED lamp will blink if you wait for some seconds, then it enters the networking mode
- (4) Make your phone wifi connected, then open the "bri-home" APP

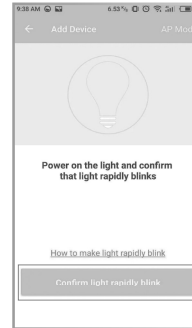
- ① Click "add device" or "+"



- ② Choose "Lighting devices"



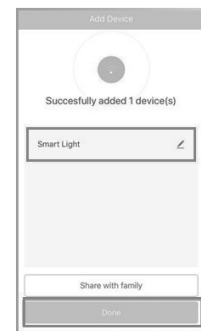
- ③ Click "confirm indicator rapidly blink" ④ Enter Wi-Fi password and click "confirm"(you have to connect wifi first)



- ⑤ Wait for connecting

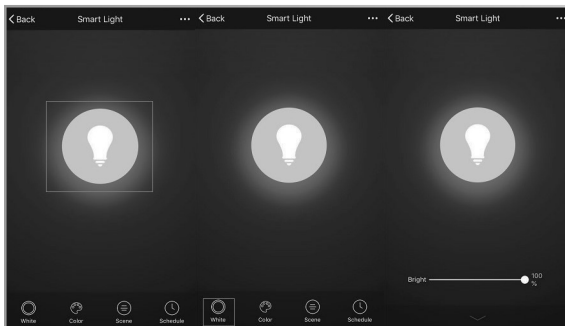


- ⑥ You can modify the name if you want and click "done"

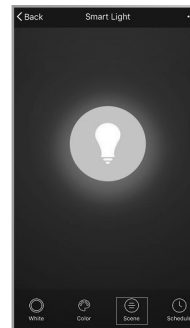


- (5) App Control interface (Function)

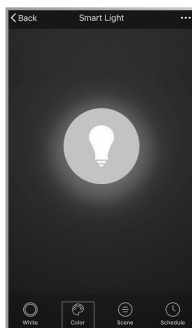
- ① Turn on/off: can be remote controlled by your smart phone
- ② Dimming function: Adjust the light brightness



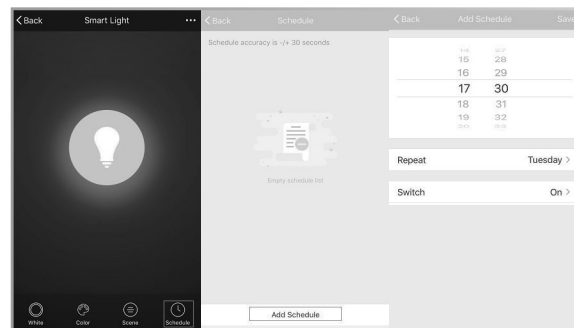
- ④ Scene selection



- ③ Color changing: Adjust the light brightness and color

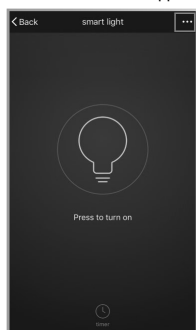


- ⑤ Timer: add schedules

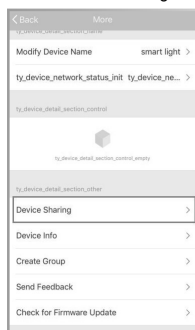


(6) Sharing the devices with other people

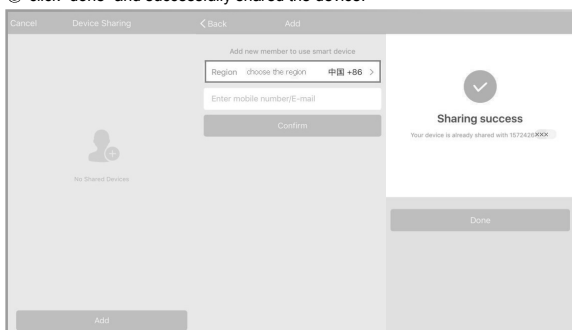
① click the "..." in the upper right corner



② click "Device sharing"

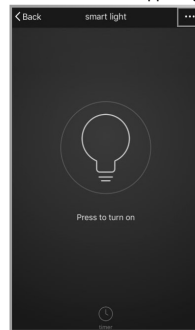


③ click "Add" ④ choose the region and add the mobile number or e-mail which you want to share with. (other people should sign in with mobile number or e-mail first)  
⑤ click "done" and successfully shared the device.

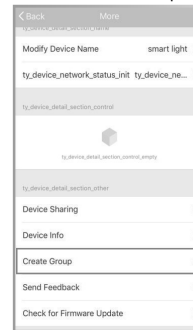


(7) Create Group: you can control many devices by creating a group

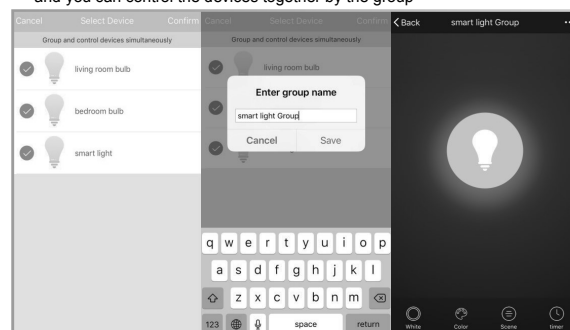
① click the "..." in the upper right corner



② click "Create Group"



③ choose the devices you want to create the group  
④ add a group name and click "save", then you create the group successfully and you can control the devices together by the group

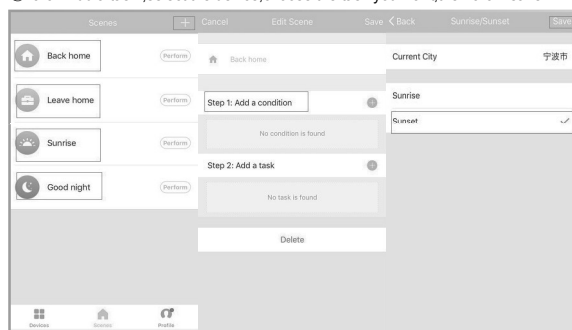


(8) Create your own scene: you can customize your own personal scenes to suit your needs.

① click "back home" / "leave home" / "sunrise" / "good night" to create relevant scene or create you own scene (you can name it) by click "+" in the upper right corner.

② click "step1: Add a condition", choose the condition you want, then click "save".

③ click "Add a task", select the device, choose the task you want, then click "save".

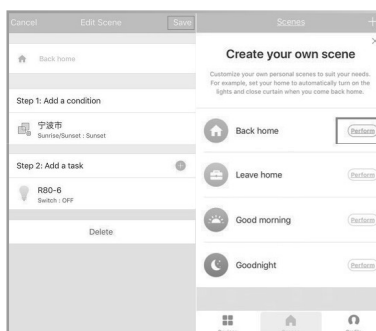
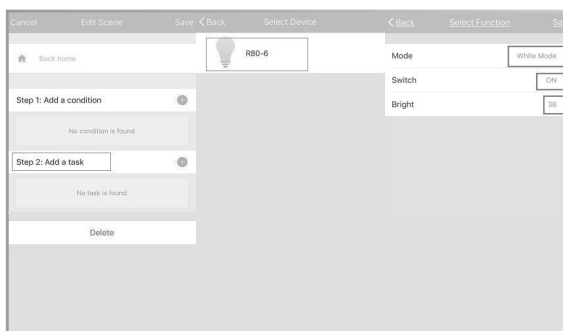


④ when the condition meets the requirement, the task will be performed (When create a scene, it takes about half an hour to updated the requirement, so the condition will be effective within half an hour.) , or you can click 'perform' to perform the task immediately even if the condition doesn't meet the requirement.

Ningbo Yamao Optoelectronics Co Ltd  
Address: 88 E ZHONGXING RD XIKOU,  
NINGBO ZHEJIANG 315502 CHINA  
Tel: +86-574-88845777  
<http://www.chinayamao.com>



For example, you can create a scene set your home to automatically turn on the lights when you come back home.



FCC Warning:

This equipment has been tested and found to comply with the limits for a Class B digital device, pursuant to part 15 of the FCC Rules. These limits are designed to provide reasonable protection against harmful interference in a residential installation. This equipment generates, uses and can radiate radio frequency energy and, if not installed and used in accordance with the instructions, may cause harmful interference to radio communications. However, there is no guarantee that interference will not occur in a particular installation. If this equipment does cause harmful interference to radio or television reception, which can be determined by turning the equipment off and on, the user is encouraged to try to correct the interference by one or more of the following measures:

- Reorient or relocate the receiving antenna.
- Increase the separation between the equipment and receiver.
- Connect the equipment into an outlet on a circuit different from that to which the receiver is connected.
- Consult the dealer or an experienced radio/TV technician for help.

Caution: Any changes or modifications to this device not explicitly approved by manufacturer could void your authority to operate this equipment.

This device complies with part 15 of the FCC Rules. Operation is subject to the following two conditions:

- (1) This device may not cause harmful interference, and
- (2) this device must accept any interference received, including interference that may cause undesired operation.

This equipment complies with FCC radiation exposure limits set forth for an uncontrolled

environment. This equipment should be installed and operated with minimum distance 20cm between the radiator and your body.