

Internal Photos

Photo 6 Internal of EUT



Photo 7 Internal of EUT



Photo 8 Appearance of PCB

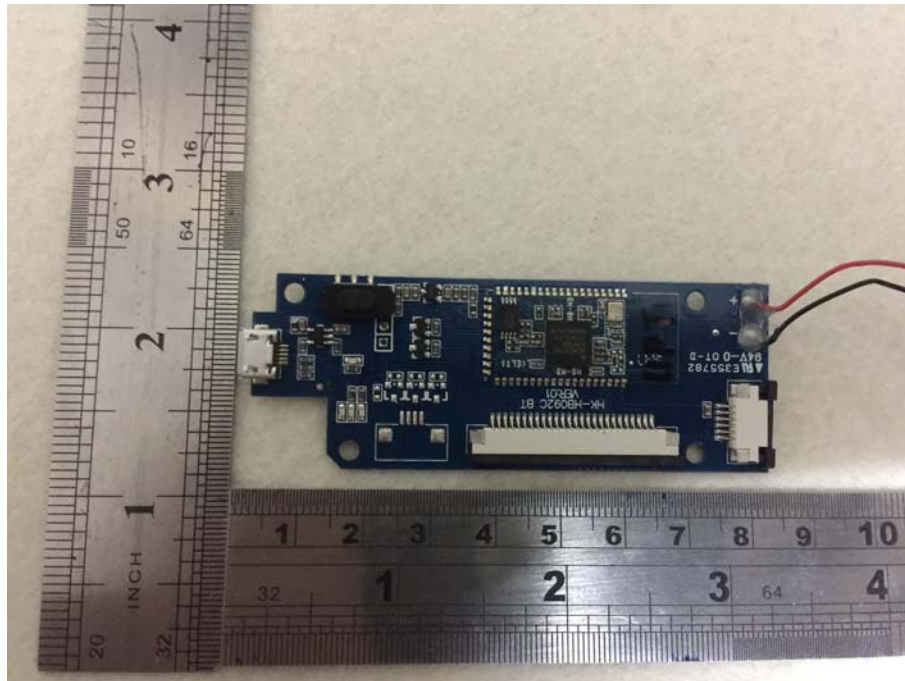
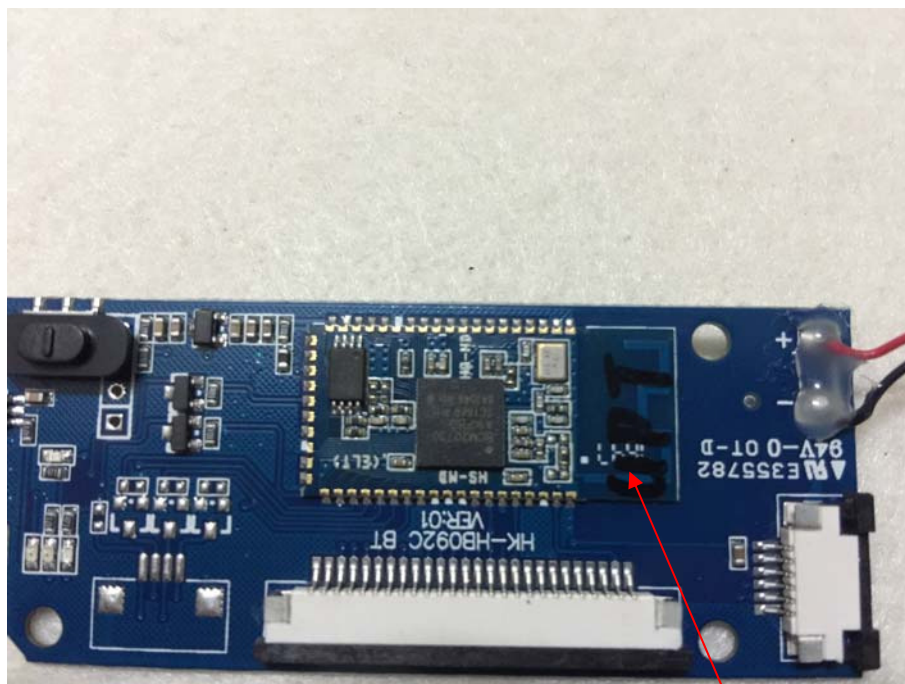


Photo 9 Appearance of PCB



BT PCB Antenna

A photograph of a custom PCB, likely for a sensor or actuator, placed next to a ruler for scale. The PCB is dark blue with various components and traces. A ruler is visible on the left and bottom, showing inches and centimeters. The PCB features a central square component, several circular pads, and a series of small holes along one edge. Two wires (red and black) are connected to the right side of the board.

A photograph of a disassembled mobile phone, showing the internal components. The main board is visible, featuring a central processor, memory, and various connectors. A white ribbon cable is connected to the board. The battery is partially visible on the left. A ruler is placed below the phone for scale, indicating the size of the components. The phone is placed on a light-colored surface.

Photo 12 Appearance of Battery

