

PowerBox SC Alloy Crankset Installation Instructions



Published – May, 2021. ZSP022.v0 © Full Speed Ahead

Introduction









Congratulations on your Full Speed Ahead product. Please read these instructions and follow them for correct use. Failure to follow the warnings and instructions could result in damage to product not covered under warranty, damage to bicycle; or cause an accident resulting in injury or death. Since specific tools and experience are necessary for proper installation, it is recommended that the product be installed by a qualified bicycle technician. FSA & Vision assumes no responsibility for damages or injury related to improperly installed components.

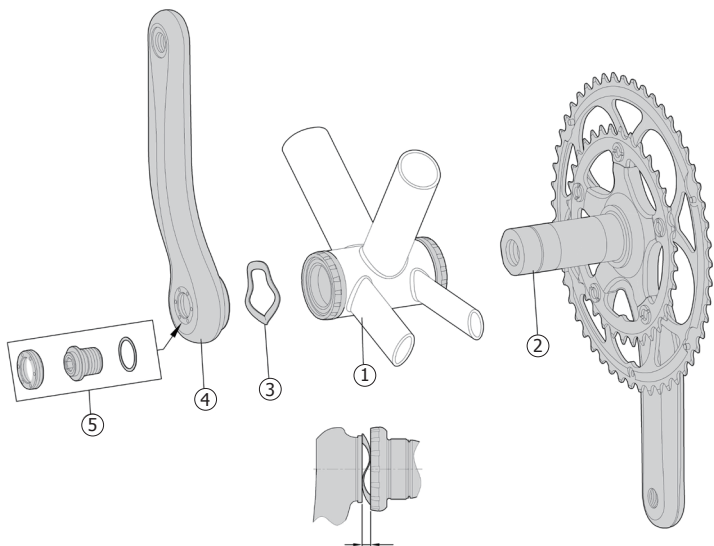
Warranty

Full Speed Ahead (FSA) warrants all FSA and Vision products to be free from defects in materials or workmanship for a period of two years after original purchase unless otherwise stated in the full warranty policy. The warranty is non-transferable and valid to the original purchaser of the product only. Any attempt to modify the product in any way such as drilling, grinding, and painting will void the warranty. For more information on warranty policy and instructions for completing a warranty claim, check out the Full Warranty Policy found at our website: <https://www.fullspeedahead.com/en/technology>

Specification

Item Number PowerBox SC

Assembly			Activation	Calibration	LED Indication
1. Remove the 4 screws from the top of the battery cover, and remove the cover from the battery housing.	2. Install supplied 2450 battery with "+" side up. Wait until the LED flashes green and turns off. Proceed to next step.	3. Replace cover onto Pod.	1. Rotate the crank. 	The PowerBox SC was designed and engineered for ease of use and simple set-up utilizing an easy "1-2-3" set-up process:	Green – High battery 
4. Place 4 screws into holes on the cover.	5. Use 1.5mm wrench tighten the screws to a torque 15.3 kgf.cm / 1.5 Nm / 13.3 in.lbs.		2. Pod displays yellow LED light then blue LED light. 	1. Place the non-drive crank into six o'clock direction. 2. Calibrate via head unit or via phone application. 3. Once the pod flashes blue white light, the PowerBox SC is calibrated successfully and you are ready to ride. 	Yellow – Medium battery  Red – Low battery  Blue – Stand by  Bluewhite – Calibration 
			3. It is ready to connect to computer.	Note: Before calibrating on each outdoor ride, it is strongly recommended to leave the crank at outdoor temperature for 10 minutes.	



Clearance between non-drive arm 1.5 – 2.0 mm

Components

Follow the assembly order in the illustration:

- ① 68mm Bottom Bracket Shell ② Right Crank x1 ③ Wave Spring Washer x1
④ Left Crank x1 ⑤ Crank Bolt Assembly for Left crank x1

Crankset Installation

1. Ensure the Bottom Bracket Shell ① is compatible.
(Note : Follow the BB installation instruction for BB will be installed).
2. Apply a thin layer of grease on the spindle surfaces ② which contact bearing.
3. Insert the drive crank ② into the right side of BB shell ①.
4. Place Wave Washer ③ onto the Spindle. Install Left Crank Arm ④ onto the axle.
5. Ensure crank bolt ⑤ is pre-installed on axle. Using a torque wrench with 10mm allen key tighten the Crank Bolt ⑤ to 388-418 kgf.cm / 38-41 Nm / 336-363 in.lbs.

CAUTION Do not tighten crank bolt over 418 kgf.cm / 41 Nm / 363 in.lbs. Try to avoid completely flattening the wave spring washer ③. Clearance between non-drive arm and bearing shield should be 1.5 - 2.0mm. If the clearance is not within 1.5 - 2.0mm after applying correct torque, DO NOT tighten the crank bolt further. Recheck installation procedure and order of assembled parts. Otherwise may cause bolt tighten torque reduced, even left crank loose ④ Always use a calibrated torque wrench to tighten crank bolt. Stripping or breakage due to installing without a torque wrench is NOT covered under manufacturing warranty.

Note: After complete crankset installation the initial rotation torque 5 kgf.cm / 0.5 Nm / 4.4 in.lbs (inclusive) is normal and safe to use!

Contact

If you have questions, please visit our web site technical section: <https://www.fullspeedahead.com/en/support> or contact:

Full Speed Ahead, USA
12212 Cyrus Way Mukilteo, WA 98275-5702
Tel: 1_425_488_8653 Fax: 1_425_489_1082

Full Speed Ahead, Europe
Via Del Lavoro, 56 20874 Busnago, Milan, Italy
Tel: +39_039_688_5265 Fax: +39_039_682_3336

TH INDUSTRIES / FSA Asia
NO.6, Wu-gong 8th Rd., Wufeng Dist., Taichung City 41353, Taiwan (R.O.C.)
Tel: +886_4_2331_9134 Fax: +886_4_2331_9314

Notes: Specifications of product may be changed or improved for performance. Please refer to website periodically for technical updates and revised instructions. Printed in Taiwan.

FCC Statement

FCC ID: 2ALMLPBSC

This device complies with Part 15 of the FCC Rules. Operation is subject to the following two conditions:

- (1) this device may not cause harmful interference and
- (2) this device must accept any interference received, including interference that may cause undesired operation of the device.

This equipment has been tested and found to comply with the limits for a Class B digital device, pursuant to part 15 of the FCC rules. These limits are designed to provide reasonable protection against harmful interference in a residential installation. This equipment generates, uses and can radiate radio frequency energy and, if not installed and used in accordance with the instructions, may cause harmful interference to radio communications. However, there is no guarantee that interference will not occur in a particular installation. If this equipment does cause harmful interference to radio or television reception, which can be determined by turning the equipment off and on, the user is encouraged to try to correct the interference by one or more of the following measures:

- Reorient or relocate the receiving antenna.
- Increase the separation between the equipment and receiver.
- Connect the equipment into an outlet on a circuit different from that to which the receiver is connected.
- Consult the dealer or an experienced radio/TV technician for help.

You are cautioned that changes or modifications not expressly approved by the part responsible for compliance could void the user's authority to operate the equipment.

FCC RF Radiation Exposure Statement:

1. This Transmitter must not be co-located or operating in conjunction with any other antenna or transmitter.
2. For body worn operation, this device has been tested and meets FCC RF exposure guidelines. When used with an accessory that contains metal may not ensure compliance with FCC RF exposure guidelines.

IC Statement

IC: 22650-PBSC

This device contains licence-exempt transmitter(s)/receiver(s) that comply with Innovation, Science and Economic Development Canada's licence-exempt RSS(s). Operation is subject to the following two conditions:

1. This device may not cause interference, and
2. This device must accept any interference, including interference that may cause undesired operation of the device.

L'émetteur/récepteur exempt de licence contenu dans le présent appareil est conforme aux CNR d'Innovation, Sciences et Développement économique Canada applicables aux appareils radio exempts de licence. L'exploitation est autorisée aux deux conditions suivantes :

1. l'appareil ne doit pas produire de brouillage, et.
2. l'utilisateur de l'appareil doit accepter tout brouillage radioélectrique subi, même si le brouillage est susceptible d'en compromettre le fonctionnement.

Caution: Exposure to Radio Frequency Radiation

1. To comply with the Canadian RF exposure compliance requirements, this device and its antenna must not be co-located or operating in conjunction with any other antenna or transmitter.
2. For body worn operation, this device has been tested and meets RF exposure guidelines when used with an accessory that contains no metal. Use of other accessories may not ensure compliance with RF exposure guidelines.

Attention: exposition au rayonnement radiofréquence

1. Pour se conformer aux exigences de conformité RF canadienne l'exposition, cet appareil et son antenne ne doivent pas être co-localisés ou fonctionnant en conjonction avec une autre antenne ou transmetteur.
2. Pour une utilisation sur le corps, cet appareil a été testé et respecte les directives sur l'exposition aux RF lorsqu'il est utilisé avec un accessoire sans métal. L'utilisation d'autres accessoires peut ne pas garantir la conformité aux directives d'exposition aux RF.

NCC 警語

LP0002低功率射頻器材技術規範 章節3.8.2

取得審驗證明之低功率射頻器材，非經核准，公司、商號或使用者均不得擅自變更頻率、加大功率或變更原設計之特性及功能。低功率射頻器材之使用不得影響飛航安全及干擾合法通信；經發現有干擾現象時，應立即停用，並改善至無干擾時方得繼續使用。前述合法通信，指依電信管理法規規定作業之無線電通信。低功率射頻器材須忍受合法通信或工業、科學及醫療用電波輻射性電機設備之干擾。

CAUTION



RISK OF EXPLOSION IF BATTERY IS REPLACED BY AN INCORRECT TYPE. DISPOSE OF USED BATTERIES ACCORDING TO THE INSTRUCTIONS.

FSA
FULL SPEED AHEAD

Vision