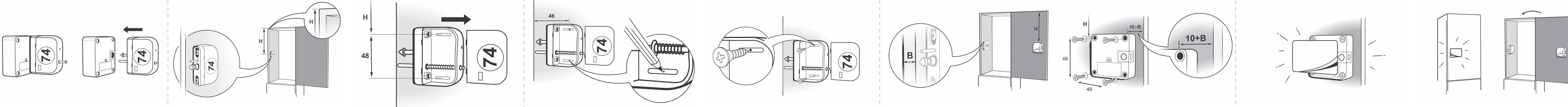
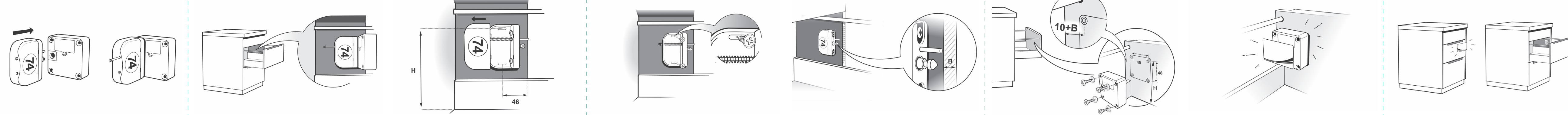


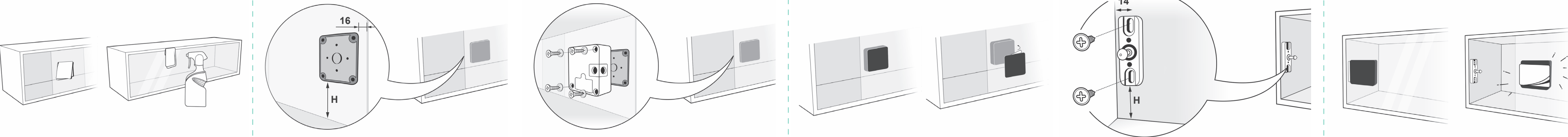
# DOORS



# DRAWERS



# SLIDINGDOORS



## TROUBLESHOOTING



## SECURITY ADVICE



### Lock is open and the keys are not working:

- The battery low alarm was activated.
- Please insert a new battery.

### Key is not working:

- Is there any sound? If so, please try to activate the key with the programming card.
- No sound: Try to find the right position at the furniture. The keys have a higher range if you place them fast at the right point than moving slowly.

### I lost my key:

- Delete all keys with the programming card.
- Activate all keys again.

### The programming card does not work:

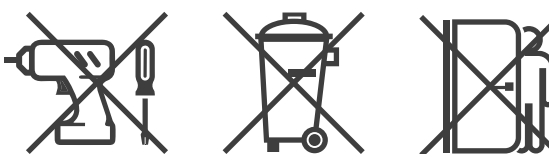
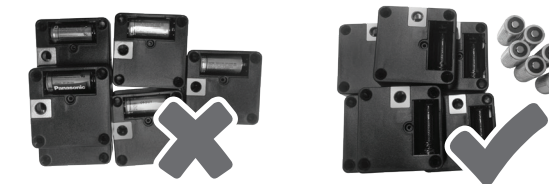
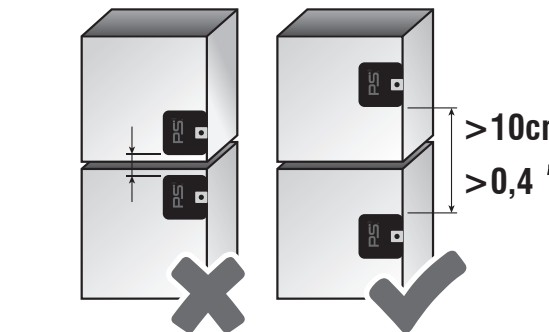
- Do you have a second card?
- If not, please unscrew the locks, press the button on the backside and teach the lock the programming card again.

### Motor runs, lock stays locked:

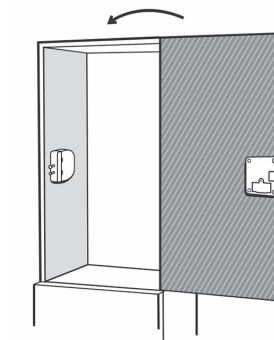
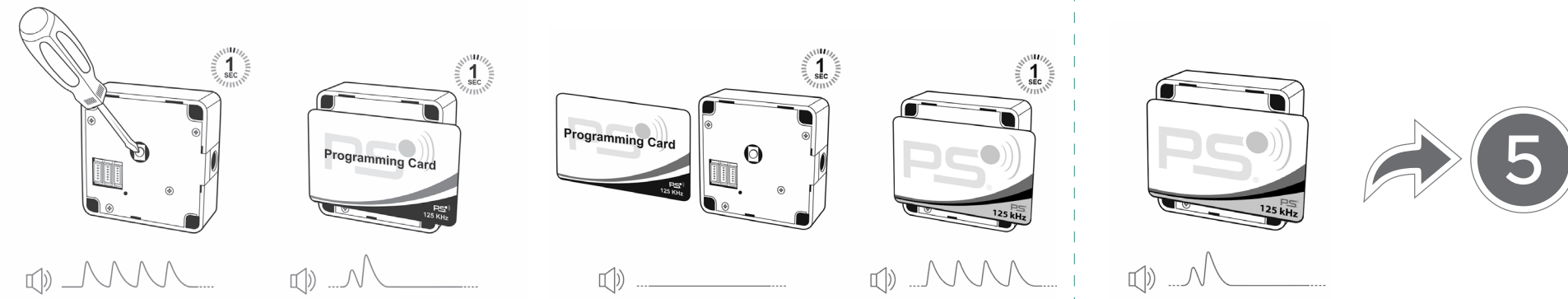
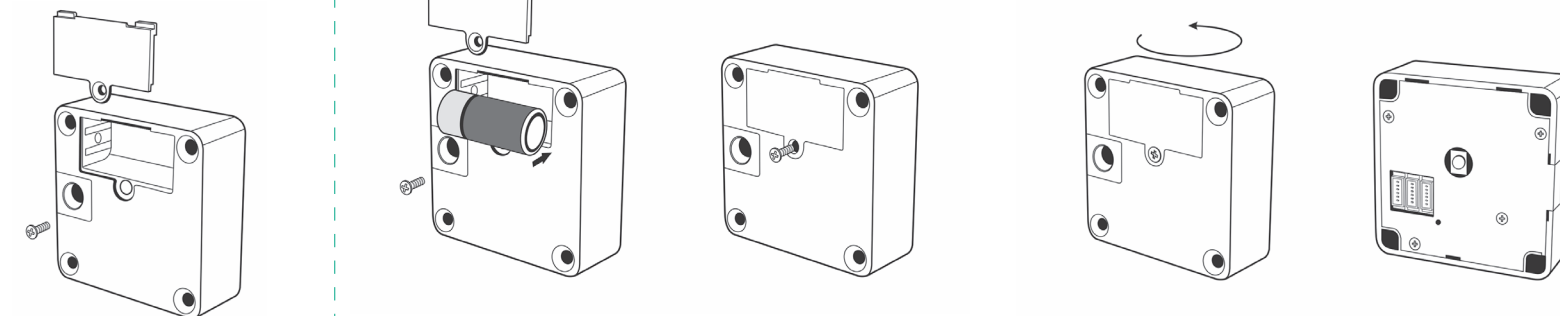
- Maybe there is some pressure on the bolt in the lock.
- Move the door in all possible directions and try it again.
- Press the door in and use your key again.
- Adjust the locking devices after such a problem.

### No sound with any card:

- Use a flat iron part (not a screwdriver) and break up the furniture. The rated breaking point at the latch will save the furniture.



# PROGRAMMING



Electronic locks • Made in AUSTRIA

Technical support: +43 699 1333 5155

5 YEARS REPLACE WARRANTY

## **FCC Statement**

1. This device complies with Part 15 of the FCC Rules. Operation is subject to the following two conditions:

(1) This device may not cause harmful interference.

(2) This device must accept any interference received, including interference that may cause undesired operation.

2. Changes or modifications not expressly approved by the party responsible for compliance could void the user's authority to operate the equipment.

### **NOTE:**

This equipment has been tested and found to comply with the limits for a Class B digital device, pursuant to Part 15 of the FCC Rules. These limits are designed to provide reasonable protection against harmful interference in a residential installation.

This equipment generates uses and can radiate radio frequency energy and, if not installed and used in accordance with the instructions, may cause harmful interference to radio communications. However, there is no guarantee that interference will not occur in a particular installation. If this equipment does cause harmful interference to radio or television reception, which can be determined by turning the equipment off and on, the user is encouraged to try to correct the interference by one or more of the following measures:

Reorient or relocate the receiving antenna.

Increase the separation between the equipment and receiver.

Connect the equipment into an outlet on a circuit different from that to which the receiver is connected.

Consult the dealer or an experienced radio/TV technician for help.