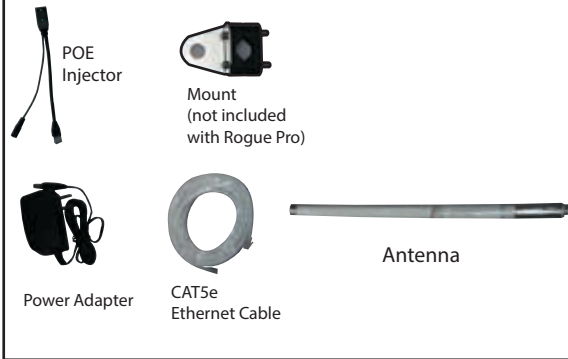




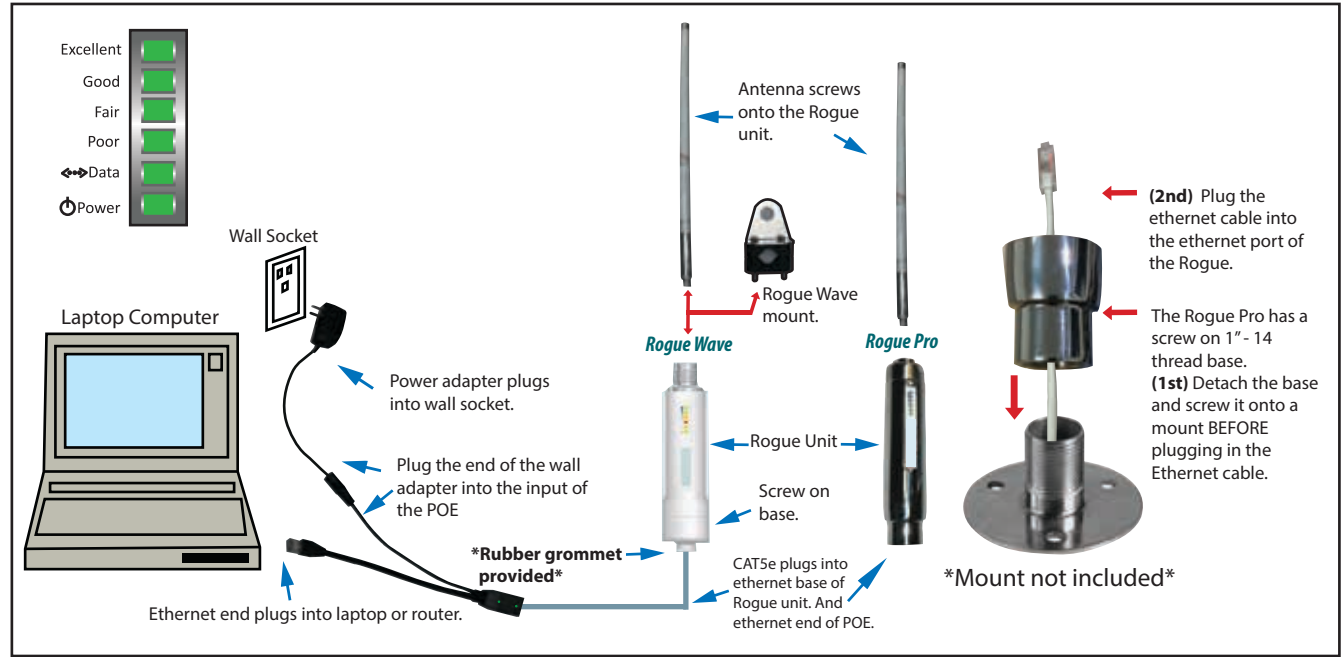
**On the Water and Online**

Did you get all of your accessories?



\*\*\*Wave WiFi suggests Initial setup be with a Laptop.\*\*\*

## Rogue Quick Start Guide



### HOW TO OPERATE:

1. Plug the ethernet cable provided into the base of the unit.  
**\*For Rogue Wave seal the ethernet hole with the white rubber grommet provided\***
2. Plug the other end of the ethernet cable into the POE (power over ethernet) injector.
3. Plug the power supply into the POE injector (Both lights should show solid green)
4. Plug the POE injector into the ethernet port of a laptop, computer or router.  
**\*When plugging into a router it will be the "internet" port.\***

### When connecting directly via Laptop / Computer:

1. Turn off the wireless capability of the laptop (if needed).
2. Open a web browser and at the top URL bar type: 192.168.89.1
3. Once on the interface page of the unit, click on a network and type in a password if needed.
4. The connection should read "Yes, Yes, Yes".

### When Using a Router:

1. Connect wirelessly to the router that the Rogue unit is physically connected to via laptop, tablet or smartphone.
2. Open a browser and at the top URL bar type: 192.168.89.1
3. Once on the interface page of the unit, click on a network and type in a password if needed.
4. The connection should read "Yes, Yes, Yes".

- ✓ Be sure when mounting the Rogue on the water that it is between 15-25ft.
- ✓ Ensure that the cable run is no longer than 60ft. If you go beyond 60ft the Rogue may not function.
- ✓ The Rogue must be mounted vertically.
- ✓ Do not mount next to Radar.

**NOTE: While the unit's light-weight, compact, weather resistant design makes it the ideal portable Ethernet converter/Wireless Bridge for temporary Internet access, prolonged exposure to the elements may cause premature deterioration of the internal circuitry and shorten the life of the unit. The Unit's Warranty Policy specifically states that the warranty is void if the failure is attributable to misuse, mishandling, improper installation, alteration (including removing or obliterating labels) and opening or removing external covers.**

# Rogue Quick Start Guide

## Connecting to the Rogue Wave

Connect the Rogue's POE adapter to your computer's Ethernet port. After several seconds your computer should receive an IP address from the Rogue (a Windows computer will generally show the message icon "Connected" at the bottom of the screen).

Open your browser and type:

**IP address: 192.168.89.1** into the address bar and press "enter". The Network Scan page will then open.

## Scanning for HotSpot Networks

If necessary you can refresh the network list by clicking the "Scan" button.

The list of wireless networks (HotSpots) is ordered by signal strength: the strongest signals are indicated by the color **GREEN**. It is likely that with subsequent scans, the bottom of the list may change frequently due to the signal strength of the weaker access points.

To connect to a HotSpot, click on the HotSpot name (SSID). The Rogue will then attempt to negotiate a connection with the remote HotSpot. During this process the screen will show "connecting". Do not click on anything until this process is completed. When the HotSpot is able to provide an IP address to the EC unit, the red "NO" for the IP address will change to a green "YES".

If the HotSpot to which you are connected has Internet access, then "YES" will appear on the Internet line.

## Rogue's Settings

Clicking on the "Settings" tab opens the above page. "Disabling EC Firewall" removes your protection from access by other network users. However, it may be necessary to disable this feature to access some HotSpots.

Clicking "reboot" disconnects the Rogue from the current hotspot and also refreshes the connection. You may have to reconnect after a reboot if the hotspot is not a favorited network.

## Troubleshooting the Rogue



- Is the cable run of the Rogue more than 60ft?
  - Are you using a coupler?
  - Are you using the 12v power adapter provided?
  - The first step in troubleshooting should be to power cycle the unit. Meaning to power it off and back on. This should last 30 secs and should be the Rogue as well as the router it is connected to.
  - Check the lights on the POE injector. They should show solid green. If the POE lights are blinking call Wave-WiFi (954-928-1310).
- If only the "DC" light is on then the Rogue is not receiving power. Check all cable connections ensuring they are all snug and not loose or falling out. (If the ethernet cable is sliding out of the Rogue unit then check that the ethernet port tabs are not damaged).

-How to log into splash pages / log in pages

- 1.) You would need to connect to the marina or grounds WiFi connection **directly** not using the rogue and bring up the splash page/Login page.
- 2.) Fill out the splash page but **DO NOT SUBMIT**
- 3.) Open a second tab on the browser.
- 4.) Disconnect from the WiFi connection and connect to the Rogue unit.
- 5.) Through the Rogue interface click the WiFi source that you are trying to connect to **AT THE SAME TIME** switch back to the splash page and submit the login information.

This will make it so that the Rogue is submitting the log in information and should allow you access onto the network. If not please call Wave WiFi for further instructions.

### Favoriting Hotspots

- 1.) Connect to the network that you want to favorite.
- 2.) Once connected click the yellow star .
- 3.) To the right click "Add current network to favorites."
- 4.) Click the "network scan" tab and you should see the  icon next to the network you favorited.



# Mounting Methods and Antenna Installation Steps

1. The Rogue Wave Pro and the Rogue Reach have a 1" - 14 female thread base to mount onto a 1"-14 standard antenna mount bracket(not included). To install these units (**1st**) detach the base and screw it onto the mount **BEFORE** plugging in the Cat 5e cable.

2. The Ethernet port is on the bottom of all of the Rogue units.

3. Thread the Cat5e cable through the mount, then the base and then into the ethernet port of the Rogue unit. This should be done **BEFORE** screwing the body of the Rogue units back onto their base (see point "1") and with the other end of the cable remaining loose at this time to avoid twisting.

4. The Rogue units vary in mounting methods. The Rogue Wave PRO and the Rogue Reach have a 1" - 14 thread female base, as shown in steps 1-3. The Rogue Wave unit comes with a rail mount bracket, 10-32 ss screws, and ss nuts to affix onto a horizontal or vertical rail, or a pole.

5. Positioning- All of the Rogue Units should be mounted vertically with the tip of the 2 foot omni directional antenna pointing upward and the Cat5e cable pointing downward. The tip of the antenna should be at least 1' away from any obstructions and ideally at least 3' from electronics to avoid any potential interferences.

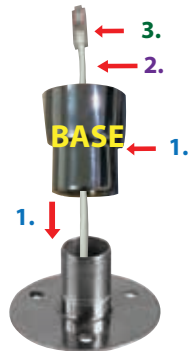
6. Antenna Mounting Rogue Wave PRO or Rogue Reach- Once the unit is securely mounted, screw the antenna on with the female "N" on the antenna facing downward onto the male "N" facing upward, without stressing the "N" connector of the male head. See point "6" below on the left.

7. Antenna Mounting Rogue Wave- Screw the 2' omni directional antennas female N securely onto it's N male mate of the Rogue Wave unit with the rail mount bracket sandwiched in between. See point "7" below on the left.

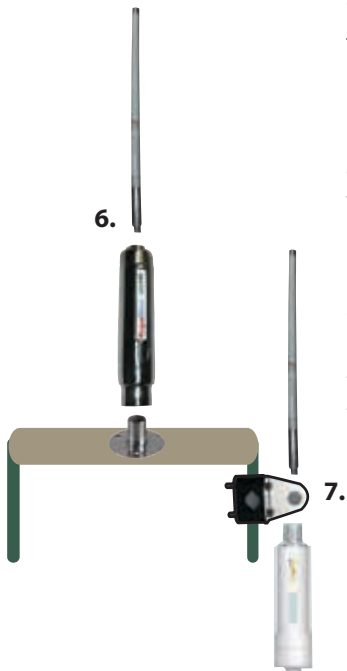
**(For further explanation on step #8 and step #9 below, please see the setup diagram on page 1)**

8. Plug the other end of the CAT5E ethernet cable into the POE injector provided. The POE injector is passive and will deliver any voltage given. If you are unsure what the POE injector is, please see "Accessories" on the first page. Although the POE injector is passive make sure that you are only powering 12v-1a to the Rogue units. Over powering your unit could damage the unit and void warranty.

9. Plug the power supply into the POE injector and validate that the "DC" light and the "Power" light are both showing on the injector. The "power" light is indicating that the Rogue system is powered on, while the "DC" light is indicating the POE having power. Next plug the POE injector into the ethernet port of a laptop or into your internal router's "internet" or WAN port. The WAN port of the router is generally colored different than the rest of ports. The Rogue system will use your wireless router or access point to broadcast its Wi-Fi signal.



\*Mount not included\*



**FCC Caution:**

Any Changes or modifications not expressly approved by the party responsible for compliance could void the user's authority to operate the equipment.

This device complies with part 15 of the FCC Rules. Operation is subject to the following two conditions: (1) This device may not cause harmful interference, and (2) this device must accept any interference received, including interference that may cause undesired operation.

Note: This equipment has been tested and found to comply with the limits for a Class B digital device, pursuant to part 15 of the FCC Rules. These limits are designed to provide reasonable protection against harmful interference in a residential installation. This equipment generates, uses and can radiate radio frequency energy and, if not installed and used in accordance with the instructions, may cause harmful interference to radio communications. However, there is no guarantee that interference will not occur in a particular installation. If this equipment does cause harmful interference to radio or television reception, which can be determined by turning the equipment off and on, the user is encouraged to try to correct the interference by one or more of the following measures:

- Reorient or relocate the receiving antenna.
- Increase the separation between the equipment and receiver.
- Connect the equipment into an outlet on a circuit different from that to which the receiver is connected.
- Consult the dealer or an experienced radio/TV technician for help.

**FCC Radiation Exposure Statement:**

This equipment complies with FCC radiation exposure limits set forth for an uncontrolled environment .This equipment should be installed and operated with minimum distance 20cm between the radiator& your body.

This transmitter must not be co-located or operating in conjunction with any other antenna or transmitter.

Use only WAVE approved supplied or replacement antennas, batteries, and accessories. Use of non-WAVE approved antennas, batteries, and accessories may exceed the FCC RF exposure guidelines.