

Qucik Star Guide

Update: 2017-March-20

Ximflip

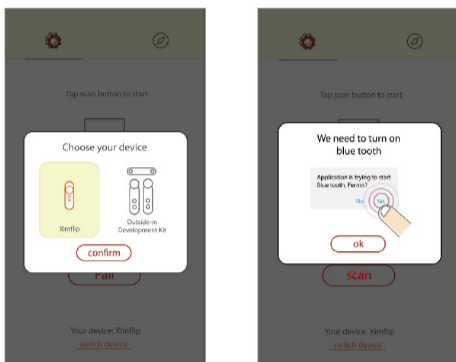
3 DOF Mobile VR Controller

Power on/ off:

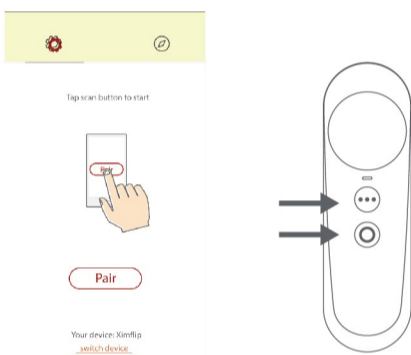
Insert two AAA batteries.
Long press  to power on/off.

Setup:

- Head to: www.ximmerse.com/cat/flipsdk, and download the application: Ximmerse Home.
- Turn on controller.
- Launch app, Select Ximflip.
A pop-up notice will remind you to ture on bluetooth.



- Click "scan" to pair your controller.
Press and hold both  and  to allow Ximflip to pair.

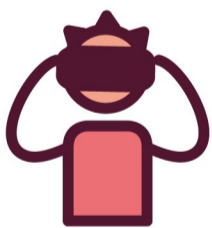



- Once successful, you will see the word "Paired" in the app and LED indicator will go off.



Once paired:

- Put on VR headset and launch game.



- Face and point both controllers forward, then press  to recenter your positional in VR



- Enjoy gameplay!

Please read this guide before use.

Remove the contents from the box carefully. If any parts are missing or damaged, please contact us at sales@ximmerse.com.
By using any of the XIMMERSE devices, you agree to the terms and conditions set forth by XIMMERSE.
No license, express, implied or otherwise, is granted with respect to any of the technology described in this manual. XIMMERSE retains all intellectual property rights associated with the technology described in this manual.
This manual is intended to assist users with the installation of XIMMERSE devices.

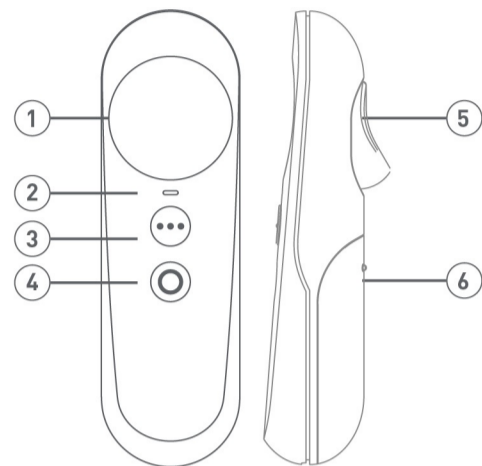
NOTICE

Do not leave the devices in direct sunlight. Exposure to direct sunlight may damage the devices.

WARNING

Children: This product is not a toy. Keep away from Children. It is not suitable for children under the age of 10, as small parts and/or broken parts may present a choking hazard. If swallowed, seek immediate medical help.

Key Definition



- 1 Touchpad + Enter button
- 2 LED indicator
- 3 Option button
- 4 Power/Home/Recenter button
- 5 Trigger
- 6 Battery cover

Device LED Indication

- Power on - breathing (1 second/per time)
- Paired succes - turn off
- Low power - quick flash (0.5 second/per time)

Specification

Dimensions	122mm(L) x 37mm(W) x 34mm (H)
Sensors	Accelerometer, Gyroscope, Touchpad
Weight	45g
Case material	PC+ABS
Latency	< 20ms
Compatibility	Android 4.4 or iOS 9.0 and above VR compatible mobile devices.
Batteries	2 x AAA Batteries (not included)
Play duration	Approx. 40 hours
Connectivity	Bluetooth LE

Support

We are here to help! Send us a description of your problem by email to support@ximmerse.com and we will reach out to you within three working days.

SDK

<http://www.ximmerse.com/cat/flipsdk/>

Returns and Refunds

Please refer to the return and refund policy at www.ximmerse.com. To reach a sales representative, please contact: sales@ximmerse.com.

CE XXXX FCC ID:2ALLR-X3C01



XIMMERSE™

Guangdong Virtual Reality Technology Co., Ltd.
www.ximmerse.com

2016 Guangdong Virtual Reality Technology Co., Ltd.
All Rights Reserved.

FCC Compliance Statement

This device complies with Part 15 of the FCC Rules. Operation is subject to the following two conditions: (1) this device may not cause harmful interference, and (2) this device must accept any interference received, including interference that may cause undesired operation.

Note: This equipment has been tested and found to comply with the limits for a Class B digital device, pursuant to Part 15 of the FCC Rules. These limits are designed to provide reasonable protection against harmful interference in a residential installation. This equipment generates, uses, and can radiate radio frequency energy, and if not installed and used in accordance with the instructions, may cause harmful interference to radio communications. However, there is no guarantee that interference will not occur in a particular installation. If this equipment does cause harmful interference to radio or television reception, which can be determined by turning the equipment off and on, the user is encouraged to try to correct the interference by one or more of the following measures:

- Reorient or relocate the receiving antenna.
- Increase the separation between the equipment and receiver.
- Connect the equipment into an outlet on a circuit different from that to which the receiver is connected.
- Consult the dealer or an experienced radio/TV technician for help.

Changes or modifications not expressly approved by the party responsible for compliance could void the user's authority to operate the equipment.